

Scotland's Labour Market - Monthly Briefing – August 2021

Scottish Government: Office of the Chief Economic Adviser



Scottish Government
Riaghaltas na h-Alba
gov.scot

This document contains up-to-date statistical information concerning the labour market in Scotland from a range of official sources.

This document is part of a collection:

<https://www.gov.scot/collections/labour-market-statistics/>

HEADLINE ESTIMATES gender ages	YOUTH 16-24 YEARS gender UK regions International gender	LABOUR MARKET disability minority ethnic underemployment qualifications full-time education	UNEMPLOYMENT duration model based	ALTERNATIVE CLAIMANT COUNT all ages 16-24 years local authorities	CLAIMANT COUNT all ages 16-24 years local authorities	HMRC EARNINGS HMRC PAYROLLED EMPLOYEES
--------------------------------------	--	--	---	--	--	--

*new
data*

<p style="text-align: center; margin: 0;">1. HEADLINE MEASURES</p> <p style="margin: 0;"><i>Headline data</i></p> <p style="margin: 0;"><i>gender</i></p> <p style="margin: 0;"><i>age</i></p>	<ul style="list-style-type: none"> y Table 1.1: Estimates of employment and unemployment by UK country, Apr-Jun 2021 y Charts 1.1 and 1.2: Employment and unemployment rate trends for Scotland and UK, Apr-Jun 2021 y Charts 1.3 and 1.4: Employment rate (16-64) by UK country, Apr-Jun 2021 - change on quarter and year y Charts 1.5 and 1.6: Unemployment rate (16+) by UK country, Apr-Jun 2021 - change on quarter and year y Table 1.2: Estimates of economic activity and inactivity by UK country, Apr-Jun 2021 y Tables 1.3 and 1.4: Unemployment and Employment by Government Office Region, Apr-Jun 2021 y Charts 1.7 and 1.8: Employment rate (16-64) for Government Office Regions, Apr-Jun 2021 - change on quarter and year y Charts 1.9 and 1.10: Unemployment rate (16+) for Government Office Regions, Apr-Jun 2021 - change on quarter and year y Table 1.5: Employment, ILO unemployment and inactivity rates by gender, Apr-Jun 2021 y Chart 1.11: Employment rate by gender (16-64), Scotland and UK, 1997-2021 y Chart 1.12: Unemployment rate by gender (16+), Scotland and UK, 1997-2021 y Chart 1.13: Inactivity rate by gender (16-64), Scotland, UK 1997-2021 y Table 1.6 : Employment, ILO Unemployment and Inactivity by age group, Scotland and UK (APS and LFS)
<p style="text-align: center; margin: 0;">2: YOUTH 16-24 YEARS</p> <p style="margin: 0;"><i>Headline data</i></p> <p style="margin: 0;"><i>gender</i></p> <p style="margin: 0;"><i>UK</i></p>	<ul style="list-style-type: none"> y Table 2.1: Youth Employment, Unemployment and Inactivity (LFS and APS), Scotland and UK y Charts 2.1 and 2.2: Youth employment and unemployment, Scotland and UK (APS) y Table 2.2: Employment, ILO unemployment and inactivity for 16-24 age group by gender, Scotland and UK (APS), Apr 2020 - Mar 2021 y Charts 2.3 and 2.4: Youth employment and unemployment by gender, Scotland (APS) y Tables 2.3 and 2.4: Youth Unemployment and Employment by Government Office Region, Apr-Jun 2021
<p style="text-align: center; margin: 0;">3: LABOUR MARKET</p> <p style="margin: 0;"><i>disability</i></p> <p style="margin: 0;"><i>ethnicity</i></p> <p style="margin: 0;"><i>self-employed, full-time part-time</i></p> <p style="margin: 0;"><i>underemployment</i></p> <p style="margin: 0;"><i>qualifications</i></p>	<ul style="list-style-type: none"> y Table 3.1: Employment rates and levels of the population aged 16-64 by disability status, Scotland (LFS and APS), 2014-2021 y Table 3.2: Employment rates and levels of the population aged 16-64 by ethnicity and gender, Scotland, 2011 - 2020 y Table 3.3: Employment patterns, Scotland, Apr-Jun 2021 y Table 3.4: Underemployment, Scotland and UK, 2010-2020 y Table 3.5: Employment rates by highest qualification held and gender, Scotland and UK, Jan 2020 - Dec 2020

Scotland's Labour Market - Monthly Briefing – August 2021

Scottish Government: Office of the Chief Economic Adviser



Scottish Government
Riaghaltas na h-Alba
gov.scot

This document contains up-to-date statistical information concerning the labour market in Scotland from a range of official sources.

This document is part of a collection:

<https://www.gov.scot/collections/labour-market-statistics/>

HEADLINE ESTIMATES
gender
ages

YOUTH 16-24 YEARS
gender
UK regions
International
gender

LABOUR MARKET
disability
minority ethnic
underemployment
qualifications
full-time education

UNEMPLOYMENT
duration
model based

ALTERNATIVE CLAIMANT COUNT
all ages
16-24 years
local authorities

CLAIMANT COUNT
all ages
16-24 years
local authorities

HMRC EARNINGS
HMRC PAYROLLED
EMPLOYEES

*new
data*

<p style="text-align: center;">4: UNEMPLOYMENT</p> <p><i>by duration model-based by age</i></p>	<p>y Table 4.1: Unemployment by duration, Annual Population Survey, Jan 2020 - Dec 2020</p> <p>y Table 4.2: Model Based Unemployment levels and rates by Local Authority</p> <p>y Chart 4.1: ILO unemployment levels by age-group (16-64), Scotland</p>
<p style="text-align: center;">5: CLAIMANT COUNT</p> <p><i>16+ years</i></p> <p><i>16-24 years</i></p>	<p>EXPERIMENTAL STATISTICS</p> <p>y Chart 5.1: Unemployment, Alternative Claimant Count and Claimant Count levels, Scotland, January 2013 - July 2021</p> <p>y Table 5.1: Claimant Count data for July 2021 - (Experimental Data)</p> <p>y Table 5.2: Claimant Count by local authority (Experimental data)</p> <p>y Chart 5.2: Change in Claimant Count rate by local authority, July 2020 to July 2021 (Experimental data)</p> <p>y Tables 5.3 and 5.4: 16-24 Claimant Count levels and rates, Scotland and UK (Experimental data)</p> <p>y Table 5.5: 16-24 Claimant Count levels and rates by Local Authority, July 2021 (Experimental data)</p>
<p style="text-align: center;">6: ALTERNATIVE CLAIMANT COUNT</p> <p><i>16+ years</i></p> <p><i>16-24 years</i></p>	<p>EXPERIMENTAL STATISTICS</p> <p>Table 6.1: Alternative Claimant Count data for May 2021 - (Experimental Data)</p> <p>Table 6.2: Alternative Claimant Count by local authority (Experimental data)</p> <p>Tables 6.3 and 6.4: 16-24 Alternative Claimant Count levels and rates, Scotland and UK (Experimental data)</p> <p>Table 6.5: 16-24 Alternative Claimant Count levels and rates by Local Authority (Experimental data)</p>
<p style="text-align: center;">7: HMRC REAL TIME PAYE DATA</p> <p><i>Scotland and UK</i></p> <p><i>by region</i></p>	<p>EXPERIMENTAL STATISTICS</p> <p>y Table 7.1: HMRC RTI data, Scotland and UK, June 2015 - June 2021 (Experimental data)</p> <p>y Chart 7.1: Median gross monthly pay, Scotland and UK, June 2015 - July 2021 (Experimental Statistics)</p> <p>y Charts 7.2 and 7.3: Payrolled employees and median monthly pay by region - annual change, June 2020 to June 2021 (Experimental data)</p> <p>y Charts 7.4 and 7.5: Payrolled employees and median monthly pay (NUTS2) - annual change, June 2020 to June 2021 (Experimental data)</p> <p>y Table 7.2: HMRC RTI data (NUTS2 and NUTS3 areas), June 2021 (Experimental data)</p>
<p style="text-align: center;">BACKGROUND INFORMATION</p> <p>Notes - 1 Notes - 2</p>	<p>Further information on revisions in response to COVID-19 measures, Alternative Claimant Count, Claimant Count and Measures of Disability</p> <p>Further sources and contact details</p>

Table 1.1: Estimates of employment and unemployment by UK country, Apr-Jun 2021
seasonally adjusted

	Level ('000)							Rate						
	Level	change on Jan-Mar 2021		change on Apr-Jun 2020		change on Apr-Jun 2011		Rate (%)	change on Jan-Mar 2021 (%pt)		change on Apr-Jun 2020 (%pt)		change on Apr-Jun 2011 (%pt)	
Employment* (levels 16+, rates 16-64)														
Scotland	2,635	-13	↓	5	↑	120	↑	74.2	-0.1	↓	0.4	↑	2.6	↑
England	27,309	99	↑	-319	↓	2,544	↑	75.3	0.4	↑	-0.8	↓	4.8	↑
Wales	1,476	-1	↓	-10	↓	115	↑	74.2	0.3	↑	-0.2	↓	5.8	↑
Northern Ireland	855	10	↑	-5	↓	51	↑	71.1	0.9	↑	0.0	↔	3.4	↑
UK	32,276	95	↑	-329	↓	2,829	↑	75.1	0.3	↑	-0.7	↓	4.6	↑
Unemployment** (16+)														
Scotland	119	-3	↓	-9	↓	-97	↓	4.3	-0.1	↓	-0.3	↓	-3.6	↓
England	1,385	-48	↓	170	↑	-750	↓	4.8	-0.2	↓	0.6	↑	-3.1	↓
Wales	62	-6	↓	21	↑	-63	↓	4.1	-0.4	↓	1.3	↑	-4.4	↓
Northern Ireland	34	4	↑	11	↑	-30	↓	3.8	0.4	↑	1.2	↑	-3.5	↓
UK	1,600	-53	↓	193	↑	-939	↓	4.7	-0.2	↓	0.6	↑	-3.2	↓

Source: Labour Force Survey, ONS

Note: *Denominator = all persons aged 16-64 **Denominator = total economically active (16+)

IMPORTANT NOTE: Labour Force Survey (LFS) estimates from Jan-Mar 2020 to Feb-Apr 2021 were reweighted in July 2021 to new populations derived using growth rates from HM Revenue and Customs (HMRC) Real Time Information (RTI) to allow for different trends during the COVID-19 pandemic. Quarterly and annual comparisons within this table are therefore based on estimates which may differ from those previously published. For further information, see Notes (page 44).

Charts 1.1 and 1.2: Employment and unemployment rate trends for Scotland and UK, Apr-Jun 2021

seasonally adjusted

Chart 1.1: Employment rate (16-64), Scotland and UK
seasonally adjusted

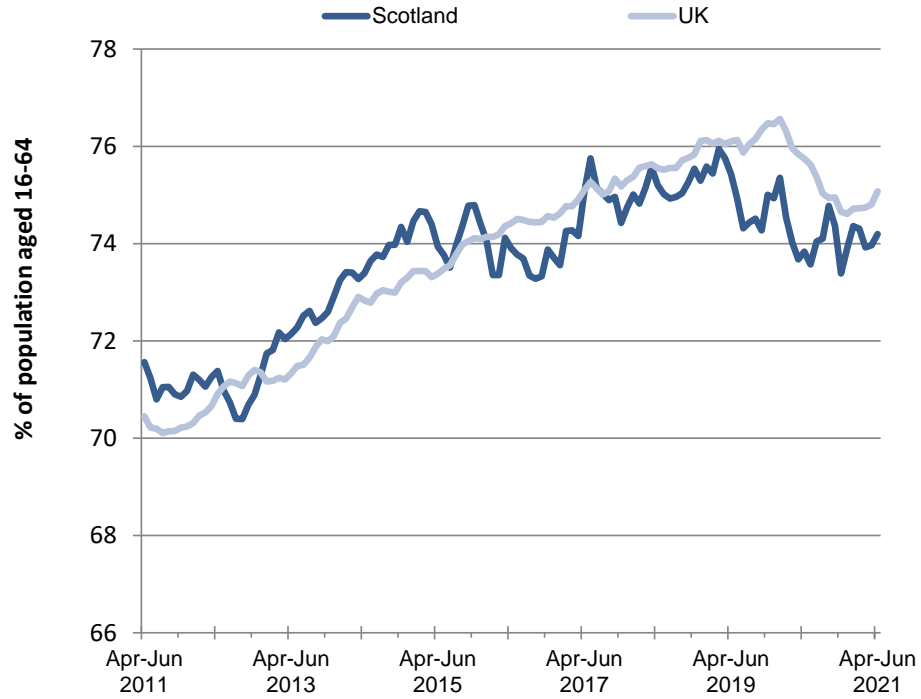


Chart 1.2: Unemployment rate (16+), Scotland and UK
seasonally adjusted



Source: Labour Force Survey, ONS

Charts 1.3 and 1.4: Employment rate (16-64) by UK country, Apr-Jun 2021 - change on quarter and year
seasonally adjusted

Chart 1.3: Employment rate (16-64) by UK country - change on quarter
seasonally adjusted

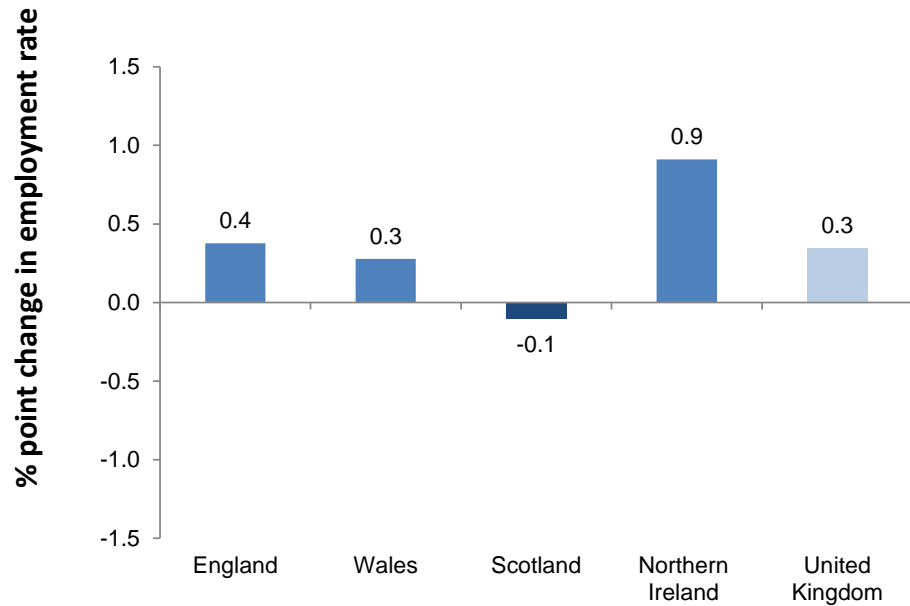
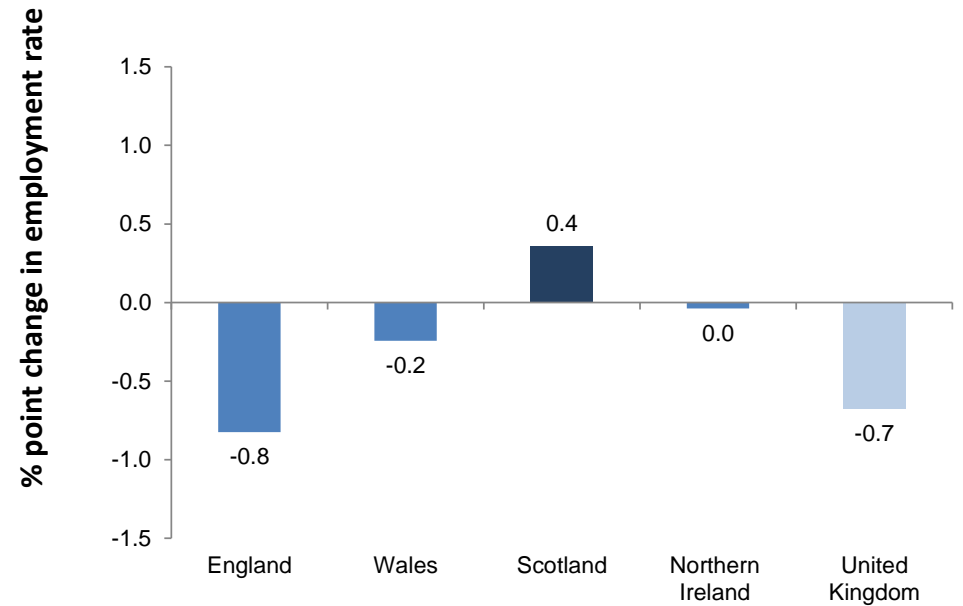


Chart 1.4: Employment rate (16-64) by UK country - change on year
seasonally adjusted



Source: Labour Force Survey, ONS

Note: Chart bars based on unrounded data. Chart labels rounded to one decimal place.

Charts 1.5 and 1.6: Unemployment rate (16+) by UK country, Apr-Jun 2021 - change on quarter and year
seasonally adjusted

Chart 1.5: Unemployment rate (16+) by UK country - change on quarter
seasonally adjusted

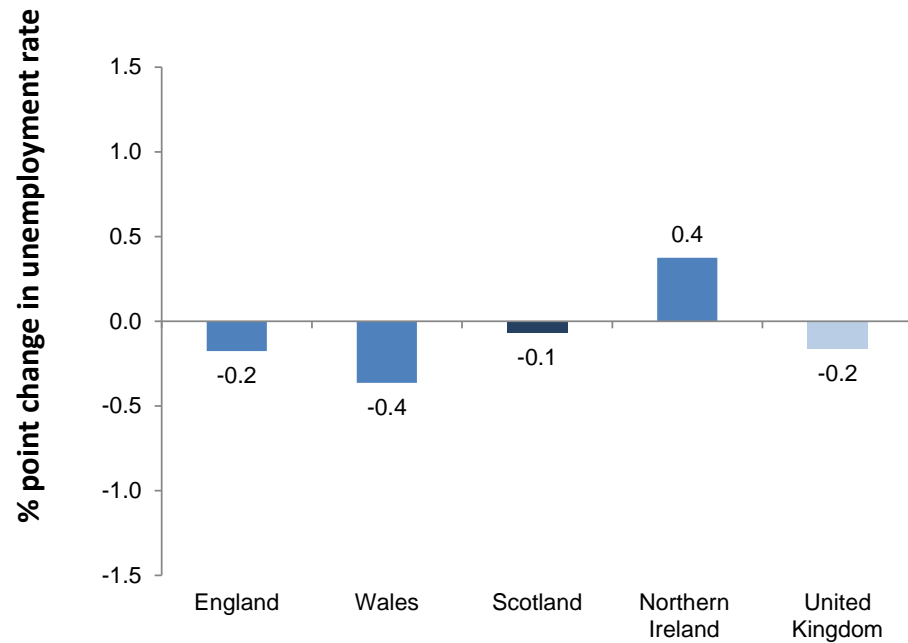
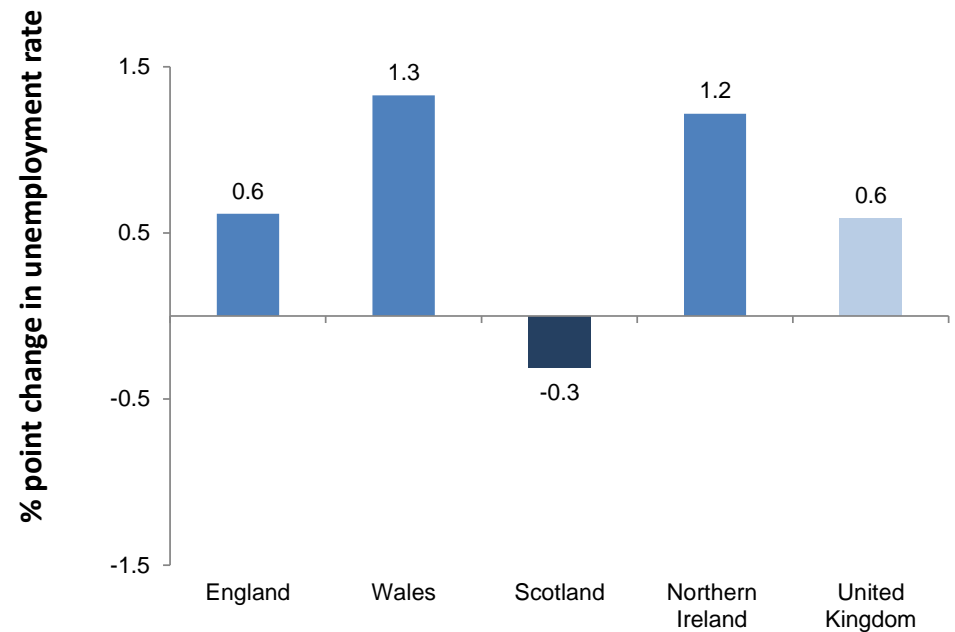


Chart 1.6: Unemployment rate (16+) by UK country - change on year
seasonally adjusted



Source: Labour Force Survey, ONS

Note: Chart bars based on unrounded data. Chart labels rounded to one decimal place.

Table 1.2: Estimates of economic activity and inactivity by UK country, Apr-Jun 2021

seasonally adjusted

	Level ('000)							Rate						
	Level	change on Jan-Mar 2021		change on Apr-Jun 2020		change on Apr-Jun 2011		Rate (%)	change on Jan-Mar 2021 (%pt)		change on Apr-Jun 2020 (%pt)		change on Apr-Jun 2011 (%pt)	
Economic Activity* (levels 16+, rates 16-64)														
Scotland	2,754	-16	↓	-4	↓	24	↑	77.6	-0.2	↓	0.1	↑	-0.2	↓
England	28,694	51	↑	-149	↓	1,793	↑	79.2	0.2	↑	-0.4	↓	2.4	↑
Wales	1,539	-7	↓	11	↑	52	↑	77.5	0.0	↔	0.9	↑	2.6	↑
Northern Ireland	890	14	↑	6	↑	21	↑	74.1	1.3	↑	0.9	↑	0.9	↑
UK	33,876	42	↑	-135	↓	1,890	↑	78.9	0.2	↑	-0.2	↓	2.2	↑
Economic Inactivity* (16-64)														
Scotland	766	5	↑	-7	↓	4	↑	22.4	0.2	↑	-0.1	↓	0.2	↑
England	7,232	-84	↓	121	↑	-668	↓	20.8	-0.2	↓	0.4	↑	-2.4	↓
Wales	428	-2	↓	-19	↓	-57	↓	22.5	0.0	↔	-0.9	↓	-2.6	↓
Northern Ireland	301	-16	↓	-12	↓	-9	↓	25.9	-1.3	↓	-0.9	↓	-0.9	↓
UK	8,727	-96	↓	82	↑	-730	↓	21.1	-0.2	↓	0.2	↑	-2.2	↓

Source: Labour Force Survey, ONS

Note: *Denominator = all aged 16-64

IMPORTANT NOTE: Labour Force Survey (LFS) estimates from Jan-Mar 2020 to Feb-Apr 2021 were reweighted in July 2021 to new populations derived using growth rates from HM Revenue and Customs (HMRC) Real Time Information (RTI) to allow for different trends during the COVID-19 pandemic. Quarterly and annual comparisons within this table are therefore based on estimates which may differ from those previously published. For further information, see Notes (page 44).

Table 1.3: Unemployment by Government Office Region (LFS), Apr-Jun 2021
seasonally adjusted

	Level ('000)					Rate				
	Level	change on Jan-Mar 2021		change on Apr-Jun 2020		Rate (%)	change on Jan-Mar 2021 (%pt)		change on Apr-Jun 2020 (%pt)	
North East	74	0	↔	3	↑	5.8	0.0	↔	0.4	↑
North West	168	-9	↓	29	↑	4.7	-0.3	↓	0.9	↑
Yorkshire and The Humber	135	2	↑	25	↑	5.0	0.0	↔	0.9	↑
East Midlands	104	-21	↓	-9	↓	4.3	-0.8	↓	-0.3	↓
West Midlands	146	-31	↓	8	↑	5.0	-1.1	↓	0.2	↑
East	127	1	↑	-3	↓	3.9	0.0	↔	-0.1	↓
London	322	-27	↓	79	↑	6.4	-0.5	↓	1.5	↑
South East	209	43	↑	46	↑	4.4	0.9	↑	1.0	↑
South West	101	-6	↓	-7	↓	3.6	-0.2	↓	-0.2	↓
Wales	62	-6	↓	21	↑	4.1	-0.4	↓	1.3	↑
Northern Ireland	34	4	↑	11	↑	3.8	0.4	↑	1.2	↑
Scotland	119	-3	↓	-9	↓	4.3	-0.1	↓	-0.3	↓
United Kingdom	1,600	-53	↓	193	↑	4.7	-0.2	↓	0.6	↑
England	1,385	-48	↓	170	↑	4.8	-0.2	↓	0.6	↑

Source: Labour Force Survey, ONS

Table 1.4: Employment by UK Countries and Regions (LFS), Apr-Jun 2021
seasonally adjusted

	Level ('000)					Rate				
	Level	change on Jan-Mar 2021		change on Apr-Jun 2020		Rate (%)	change on Jan-Mar 2021 (%pt)		change on Apr-Jun 2020 (%pt)	
North East	1,202	-6	↓	-28	↓	71.6	-0.4	↓	-1.5	↓
North West	3,403	28	↑	-95	↓	73.2	0.6	↑	-2.0	↓
Yorkshire and The Humber	2,542	16	↑	-15	↓	72.9	0.5	↑	-0.4	↓
East Midlands	2,303	3	↑	-35	↓	75.3	0.5	↑	-0.9	↓
West Midlands	2,793	52	↑	8	↑	74.5	1.6	↑	0.5	↑
East	3,084	14	↑	31	↑	78.1	0.4	↑	0.8	↑
London	4,733	18	↑	-56	↓	74.7	0.2	↑	-1.2	↓
South East	4,548	-25	↓	-86	↓	77.9	-0.3	↓	-1.4	↓
South West	2,701	-1	↓	-43	↓	77.0	0.3	↑	-0.6	↓
Wales	1,476	-1	↓	-10	↓	74.2	0.3	↑	-0.2	↓
Northern Ireland	855	10	↑	-5	↓	71.1	0.9	↑	0.0	↔
Scotland	2,635	-13	↓	5	↑	74.2	-0.1	↓	0.4	↑
United Kingdom	32,276	95	↑	-329	↓	75.1	0.3	↑	-0.7	↓
England	27,309	99	↑	-319	↓	75.3	0.4	↑	-0.8	↓

Source: Labour Force Survey, ONS

IMPORTANT NOTE: Labour Force Survey (LFS) estimates from Jan-Mar 2020 to Feb-Apr 2021 were reweighted in July 2021 to new populations derived using growth rates from HM Revenue and Customs (HMRC) Real Time Information (RTI) to allow for different trends during the COVID-19 pandemic. Quarterly and annual comparisons within this table are therefore based on estimates which may differ from those previously published. For further information, see Notes (page 44).

Charts 1.7 and 1.8: Employment rate (16-64) for Government Office Regions, Apr-Jun 2021 - change on quarter and year
seasonally adjusted

Chart 1.7: Employment rate (16-64) by Government Office Region - change on quarter
seasonally adjusted

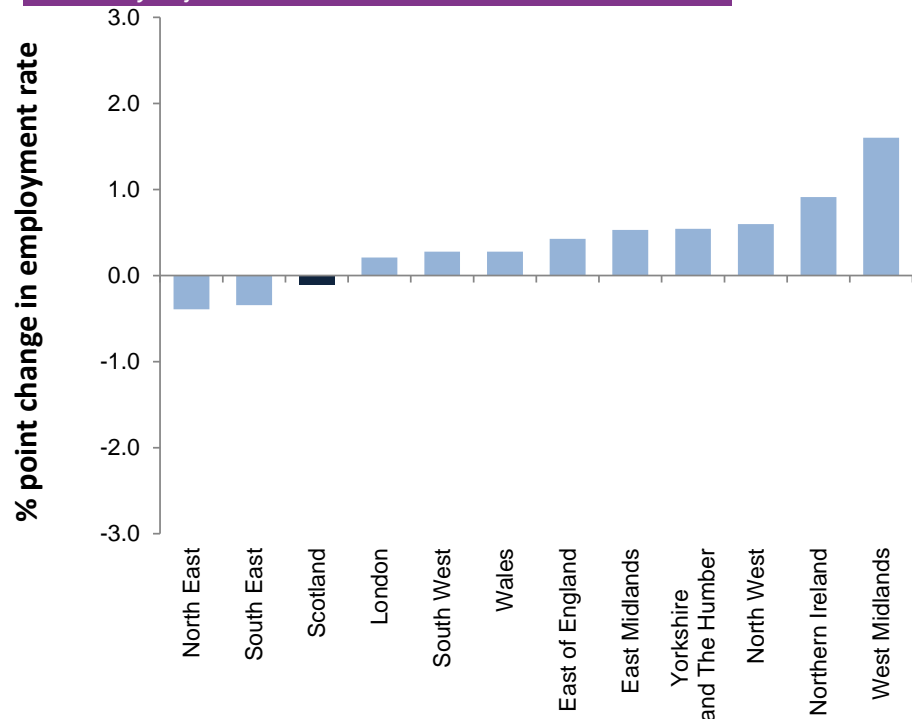
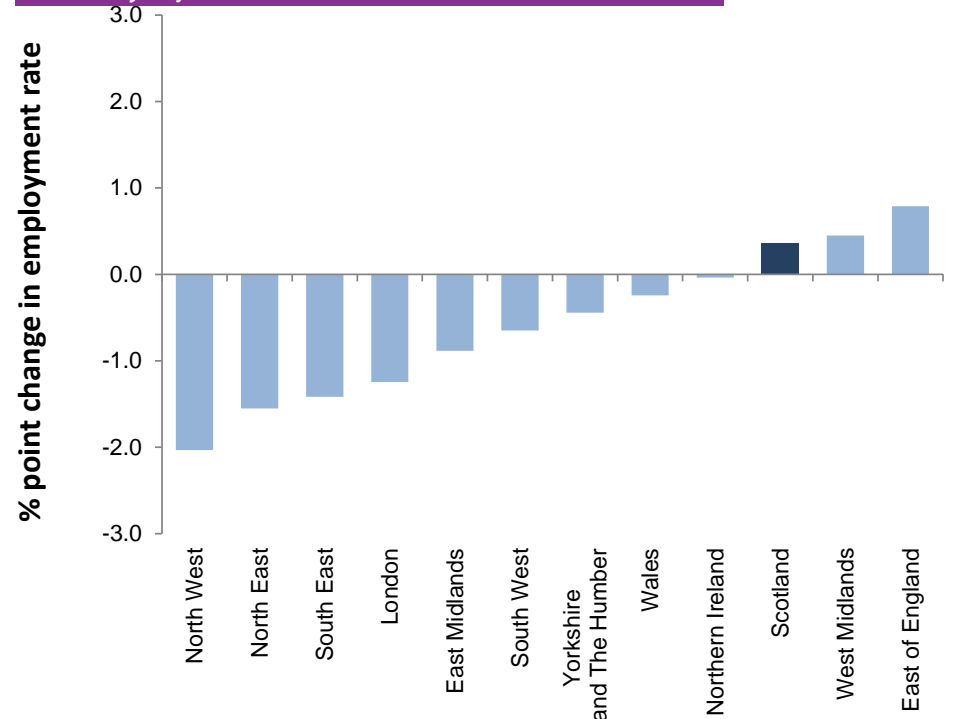


Chart 1.8: Employment rate (16-64) by Government Office Region - change on year
seasonally adjusted



Source: Labour Force Survey, ONS

Charts 1.9 and 1.10: Unemployment rate (16+) for Government Office Regions, Apr-Jun 2021 - change on quarter and year
seasonally adjusted

Chart 1.9: Unemployment rate (16+) by Government Office Region - change on quarter
seasonally adjusted

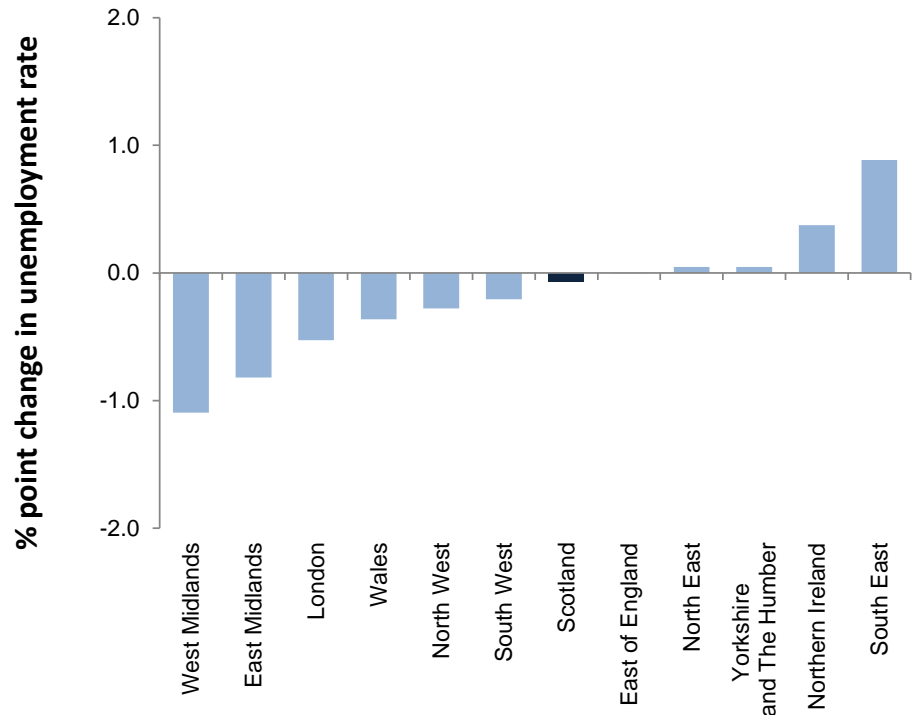
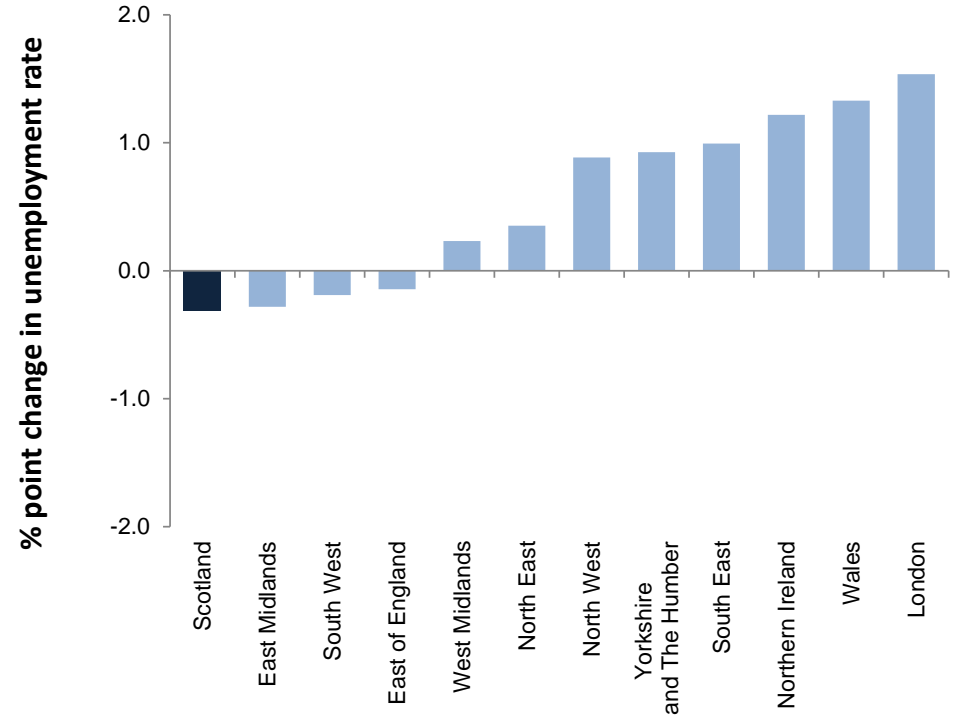


Chart 1.10: Unemployment rate (16+) by Government Office Region - change on year
seasonally adjusted



Source: Labour Force Survey, ONS

Table 1.5: Employment, ILO unemployment and inactivity rates by gender, Apr-Jun 2021
seasonally adjusted

	Gender	Scotland					UK				
		Rate (%)	Change on quarter (%pts)		Change on year (%pts)		Rate (%)	Change on quarter (%pts)		Change on year (%pts)	
Employment Rate*	People	74.2	-0.1	↓	0.4	↑	75.1	0.3	↑	-0.7	↓
	Men	76.1	-0.6	↓	-0.4	↓	78.2	0.4	↑	-1.4	↓
	Women	72.4	0.4	↑	1.1	↑	72.0	0.3	↑	0.1	↑
Unemployment Rate**	People	4.3	-0.1	↓	-0.3	↓	4.7	-0.2	↓	0.6	↑
	Men	4.9	0.5	↑	0.0	↔	4.9	-0.2	↓	0.6	↑
	Women	3.7	-0.7	↓	-0.6	↓	4.5	-0.1	↓	0.5	↑
Inactivity Rate*	People	22.4	0.2	↑	-0.1	↓	21.1	-0.2	↓	0.2	↑
	Men	19.9	0.2	↑	0.5	↑	17.7	-0.2	↓	0.9	↑
	Women	24.7	0.2	↑	-0.6	↓	24.6	-0.2	↓	-0.4	↓

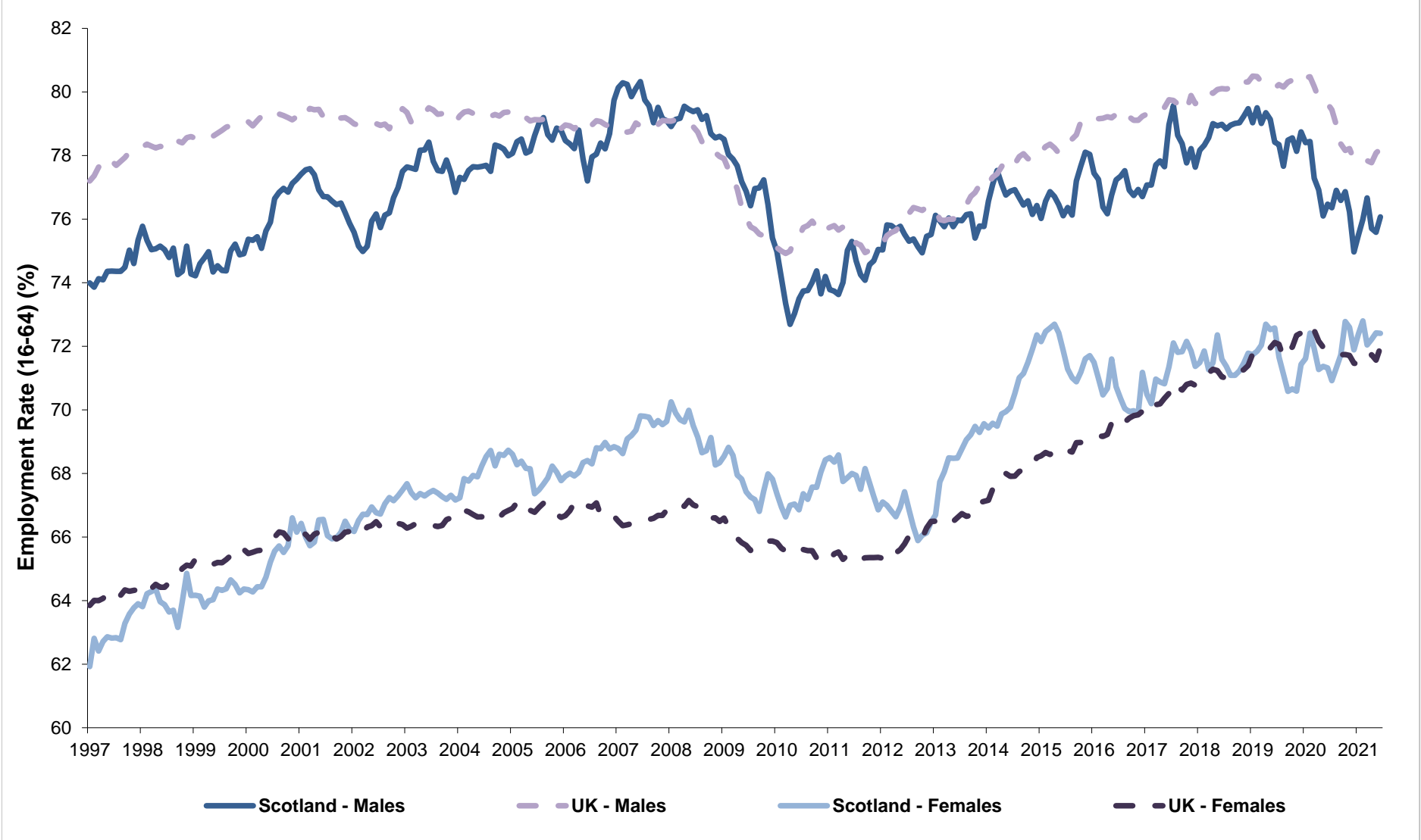
Source: Labour Force Survey, ONS

Note: * Denominator = population of aged 16-64

**Denominator = Economically active population

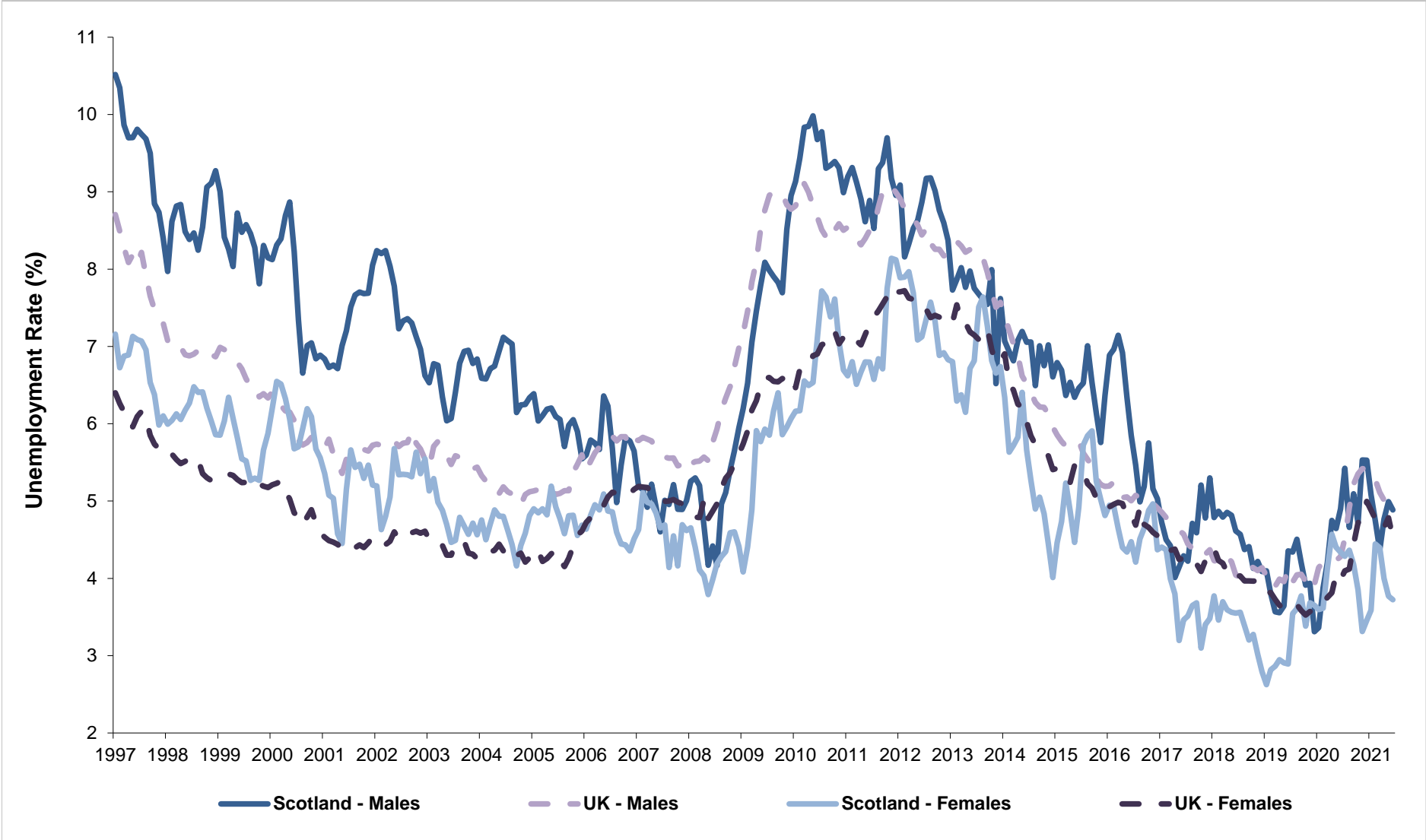
IMPORTANT NOTE: Labour Force Survey (LFS) estimates from Jan-Mar 2020 to Feb-Apr 2021 were reweighted in July 2021 to new populations derived using growth rates from HM Revenue and Customs (HMRC) Real Time Information (RTI) to allow for different trends during the COVID-19 pandemic. Quarterly and annual comparisons within this table are therefore based on estimates which may differ from those previously published. For further information, see Notes (page 44).

Chart 1.11: Employment rate by gender (16-64), Scotland and UK, 1997-2021
seasonally adjusted



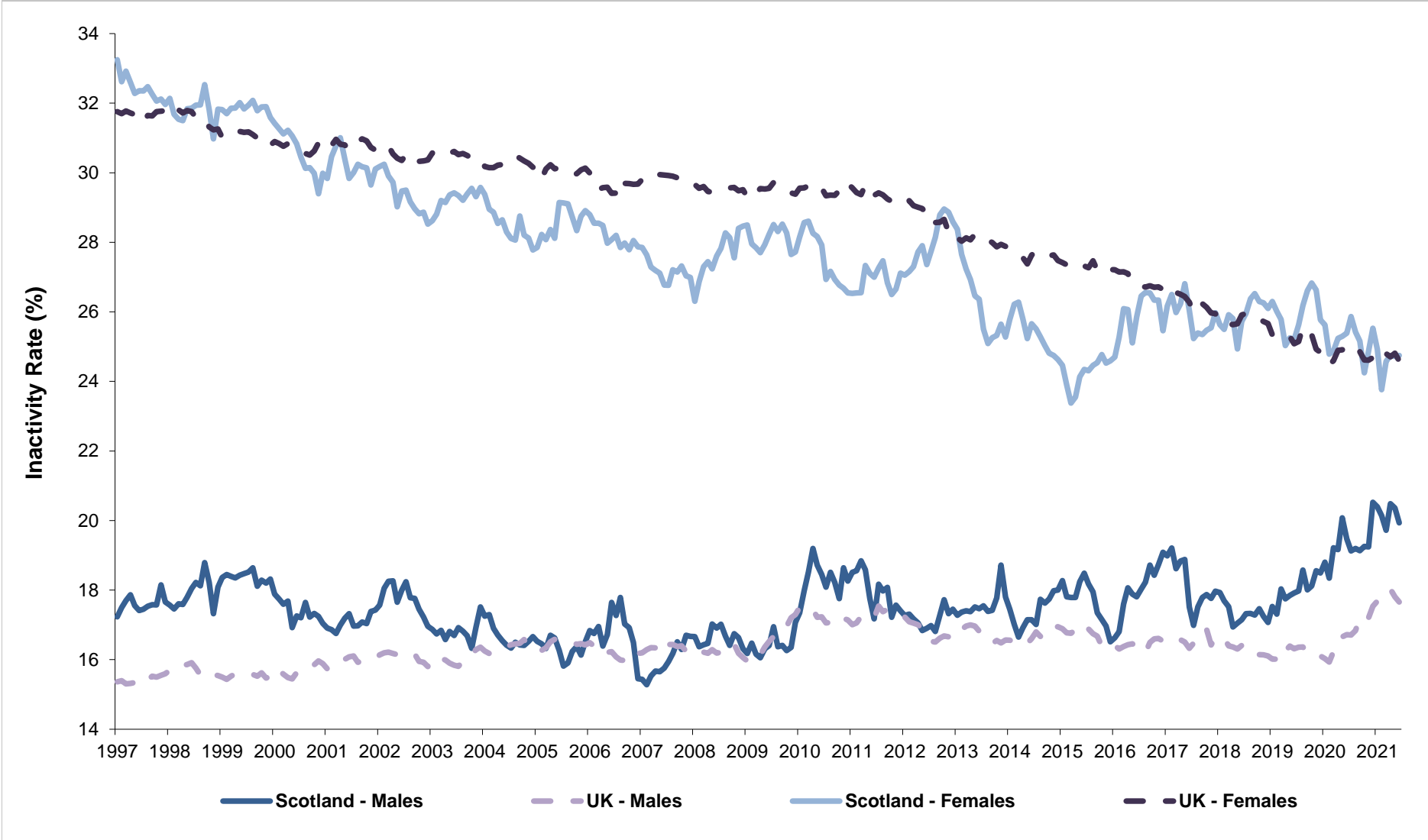
Source: Labour Force Survey, ONS

Chart 1.12: Unemployment rate by gender (16+), Scotland and UK, 1997-2021
seasonally adjusted



Source: Labour Force Survey, ONS

Chart 1.13: Inactivity rate by gender (16-64), Scotland, UK 1997-2021
seasonally adjusted



Source: Labour Force Survey, ONS

Table 1.6a: Employment, ILO unemployment and inactivity rates by age group, Scotland and UK, Annual Population Survey: Apr 2020 - Mar 2021

	Age Group	Scotland					UK				
		Rate (%)	change on year (%pt)	change on Apr 2010 - Mar 2011 (%pt)	Rate (%)	change on year (%pt)	change on Apr 2010 - Mar 2011 (%pt)				
Employment Rate	16-24	52.8	-1.8	↓	-3.1	↓	51.1	-2.9	↓	0.9	↑
	25-34	82.5	-0.2	↓	3.5	↑	83.9	-0.3	↓	5.9	↑
	35-49	81.7	-1.9	↓	0.1	↑	84.4	-0.7	↓	3.6	↑
	50-64	68.2	-2.6	↓	5.0	↑	71.2	-1.3	↓	6.7	↑
	65+	8.9	0.0	↔	2.2	↑	10.3	-0.7	↓	2.1	↑
Unemployment Rate	16-24	12.5	3.6	↑	-7.2	↓	14.0	2.2	↑	-5.4	↓
	25-34	3.7	0.4	↑	-4.0	↓	4.4	1.0	↑	-2.9	↓
	35-49	3.5	1.2	↑	-1.5	↓	3.2	0.7	↑	-2.2	↓
	50-64	3.6	1.5	↑	-0.8	↓	3.5	1.0	↑	-1.2	↓
	65+	*	*	-	*	-	2.1	0.4	↑	-0.1	↓
Inactivity Rate	16-24	39.6	-0.4	↓	9.2	↑	40.6	1.8	↑	2.9	↑
	25-34	14.3	-0.1	↓	0.0	↔	12.3	-0.6	↓	-3.6	↓
	35-49	15.3	0.9	↑	1.3	↑	12.8	0.2	↑	-1.8	↓
	50-64	29.3	1.5	↑	-4.6	↓	26.2	0.6	↑	-6.1	↓
	65+	91.0	0.0	↔	-2.2	↓	89.5	0.7	↑	-2.1	↓

Source: Annual Population Survey, ONS

* data not available

** Denominator = population in age group

*** Denominator = Economically active population in age group (where economically active is defined as those in employment plus those who are unemployed)

Table 1.6b: Employment, ILO unemployment and inactivity rates by age group, Scotland and UK, Labour Force Survey: Apr-Jun 2021

Official Statistics - not seasonally adjusted

	Age Group	Scotland					UK				
		Rate (%)	Change on year (%pt)	Change on 2011 (%pt)	Rate (%)	Change on year (%pt)	Change on 2011 (%pt)				
Employment Rate**	16-24	58.1	5.3	↑	4.3	↑	50.8	-1.7	↓	1.2	↑
	25-34	81.6	1.7	↑	2.1	↑	84.4	-0.4	↓	6.1	↑
	35-49	83.7	-0.5	↓	1.6	↑	85.1	0.1	↑	4.0	↑
	50-64	69.3	-2.1	↓	3.8	↑	71.2	-1.0	↓	6.3	↑
	65+	9.2	0.2	↑	2.4	↑	10.5	0.0	↔	1.6	↑
Unemployment Rate***	16-24	9.3	-4.4	↓	-11.9	↓	12.5	-0.2	↓	-7.7	↓
	25-34	4.7	-0.3	↓	-3.5	↓	4.1	0.5	↑	-3.9	↓
	35-49	3.5	0.8	↑	-1.4	↓	3.2	0.7	↑	-2.2	↓
	50-64	2.9	0.1	↑	-1.2	↓	3.4	0.8	↑	-1.4	↓
	65+	2.2	*	-	*	-	2.8	1.3	↑	1.0	↑
Inactivity Rate**	16-24	36.0	-2.8	↓	4.3	↑	41.9	2.1	↑	4.1	↑
	25-34	14.4	-1.6	↓	1.0	↑	12.0	0.0	↔	-2.9	↓
	35-49	13.2	-0.2	↓	-0.4	↓	12.0	-0.7	↓	-2.1	↓
	50-64	28.6	2.1	↑	-3.1	↓	26.3	0.4	↑	-5.5	↓
	65+	90.6	-0.2	↓	-2.5	↓	89.2	-0.1	↓	-1.8	↓

Source: Labour Force Survey, ONS

* data not available

** Denominator = population in age group

*** Denominator = Economically active population in age group (where economically active is defined as those in employment plus those who are unemployed).

Quality indicator

Shaded estimates are based on a small sample size. This may result in a less precise estimates, which should be used with caution.

Unshaded estimates are based on a larger sample size. This is likely to result in estimates of higher precision, although they will still be subject to some sampling variability.

Note on data sources: The Labour Force Survey (LFS) is a survey of households collected and published by the Office for National Statistics (ONS). Further information on reliability can be accessed in the ONS publication at: <https://www.ons.gov.uk/employmentandlabourmarket/peopleinwork/employmentandemployeetypes/methodologies/measuringandreportingreliabilityoflabourforcesurveyandannualpopulationsurveyestimates>

The LFS estimates in Table 1.6b are from the same source as the headline figures but due to the relatively small sample sizes and subsequent sampling variability, the figures should be used with caution and are designated as Official Statistics. The preferred source of labour market indicators by age band for regions/countries of the UK is the Annual Population Survey (APS).

The APS estimates are classified as National Statistics as they are based on a larger sample size, but are not as current as LFS estimates. Regional estimates for the unemployment rate maybe quite volatile, which needs to be allowed for when considering the pattern of change over time and sample sizes are also smaller for sub groups such as 16-24 year olds which can also affect volatility. Sampling variability information is published at:

<https://www.ons.gov.uk/employmentandlabourmarket/peopleinwork/employmentandemployeetypes/datasets/samplingvariabilityandrevisionssummaryforregionallabourmarketstatistics02>

IMPORTANT NOTE: Labour Force Survey (LFS) estimates from Jan-Mar 2020 to Feb-Apr 2021 were reweighted in July 2021 to new populations derived using growth rates from HM Revenue and Customs (HMRC) Real Time Information (RTI) to allow for different trends during the COVID-19 pandemic. Annual Population Survey (APS) responses for periods from April 2019 - March 2020 onwards have also been reweighted by the same method. Annual comparisons within this table are therefore based on estimates which may differ from those previously published. For further information, see Notes (page 44).

Table 2.1a: Employment, ILO unemployment and inactivity for 16-24 age group, Scotland and UK, Annual Population Survey (APS): Apr 2020 - Mar 2021

	Level ('000)					Rate				
	Level	Change on year		change on Apr 2010 - Mar 2011		Rate (%)	Change on year (%pts)		change on Apr 2010 - Mar 2011 (%pts)	
Employment*										
Scotland	293	-15	↓	-54	↓	52.8	-1.8	↓	-3.1	↓
UK	3,492	-229	↓	-184	↓	51.1	-2.9	↓	0.9	↑
ILO Unemployment **										
Scotland	42	12	↑	-43	↓	12.5	3.6	↑	-7.2	↓
UK	568	71	↑	-318	↓	14.0	2.2	↑	-5.4	↓
Inactivity *										
Scotland	220	-6	↓	31	↑	39.6	-0.4	↓	9.2	↑
UK	2,778	98	↑	14	↑	40.6	1.8	↑	2.9	↑

Source: Annual Population Survey (APS), ONS

Notes: *denominator = 16-24 population; ** denominator = economically active population aged 16-24

Table 2.1b: Employment, ILO unemployment and inactivity for 16-24 age group, Scotland and UK, Labour Force Survey (LFS): Apr-Jun 2021
not seasonally adjusted (Official Statistics)

	Level ('000)					Rate				
	Level	Change on year		Change on 2011		Rate (%)	Change on year (%pts)		Change on 2011 (%pt)	
Employment*										
Scotland	318	23	↑	-18	↓	58.1	5.3	↑	4.3	↑
UK	3,454	-152	↓	-201	↓	50.8	-1.7	↓	1.2	↑
ILO Unemployment **										
Scotland	32	-14	↓	-58	↓	9.3	-4.4	↓	-11.9	↓
UK	493	-31	↓	-434	↓	12.5	-0.2	↓	-7.7	↓
Inactivity *										
Scotland	197	-19	↓	-1	↓	36.0	-2.8	↓	4.3	↑
UK	2,849	119	↑	62	↑	41.9	2.1	↑	4.1	↑

Source: Labour Force Survey (LFS), ONS

*rate based on total population aged 16-24

**rate=ILO unemployed/(employed+ ILO unemployed)

Quality indicator

Shaded estimates are based on a small sample size. This may result in a less precise estimates, which should be used with caution.

Unshaded estimates are based on a larger sample size. This is likely to result in estimates of higher precision, although they will still be subject to some sampling variability.

Note on data sources: The Labour Force Survey (LFS) is a survey of households collected and published by the Office for National Statistics (ONS). Further information on reliability can be accessed in the ONS publication at: <https://www.ons.gov.uk/employmentandlabourmarket/peopleinwork/employmentandemployeetypes/methodologies/measuringandreportingreliabilityoflabourforcesurveyandannualpopulationsurveyestimates>

The LFS estimates in Table 2.1b are from the same source as the headline figures but due to the relatively small sample sizes and subsequent sampling variability, the figures should be used with caution and are designated as Official Statistics. The preferred source of labour market indicators by age band for regions/countries of the UK is the Annual Population Survey (APS).

The APS estimates are classified as National Statistics as they are based on a larger sample size, but are not as current as LFS estimates. Regional estimates for the unemployment rate may be quite volatile, which needs to be allowed for when considering the pattern of change over time and sample sizes are also smaller for sub groups such as 16-24 year olds which can also affect volatility. Sampling variability information is published at:

<https://www.ons.gov.uk/employmentandlabourmarket/peopleinwork/employmentandemployeetypes/datasets/samplingvariabilityandrevisionsummaryforregionallabourmarketstatistics02>

IMPORTANT NOTE: Labour Force Survey (LFS) estimates from Jan-Mar 2020 to Feb-Apr 2021 were reweighted in July 2021 to new populations derived using growth rates from HM Revenue and Customs (HMRC) Real Time Information (RTI) to allow for different trends during the COVID-19 pandemic. Annual Population Survey (APS) responses for periods from April 2019 - March 2020 onwards have also been reweighted by the same method. Annual comparisons within this table are therefore based on estimates which may differ from those previously published. For further information, see Notes (page 44).

Charts 2.1 and 2.2: Youth employment and unemployment, Scotland and UK (APS)

Chart 2.1: Youth employment rate

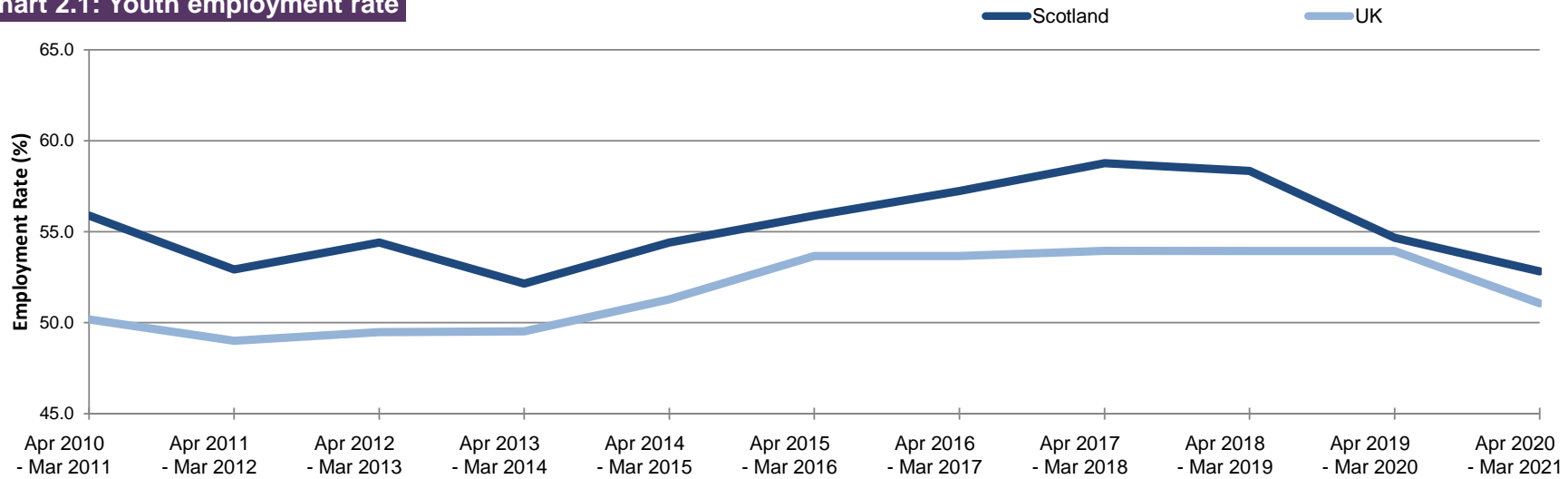
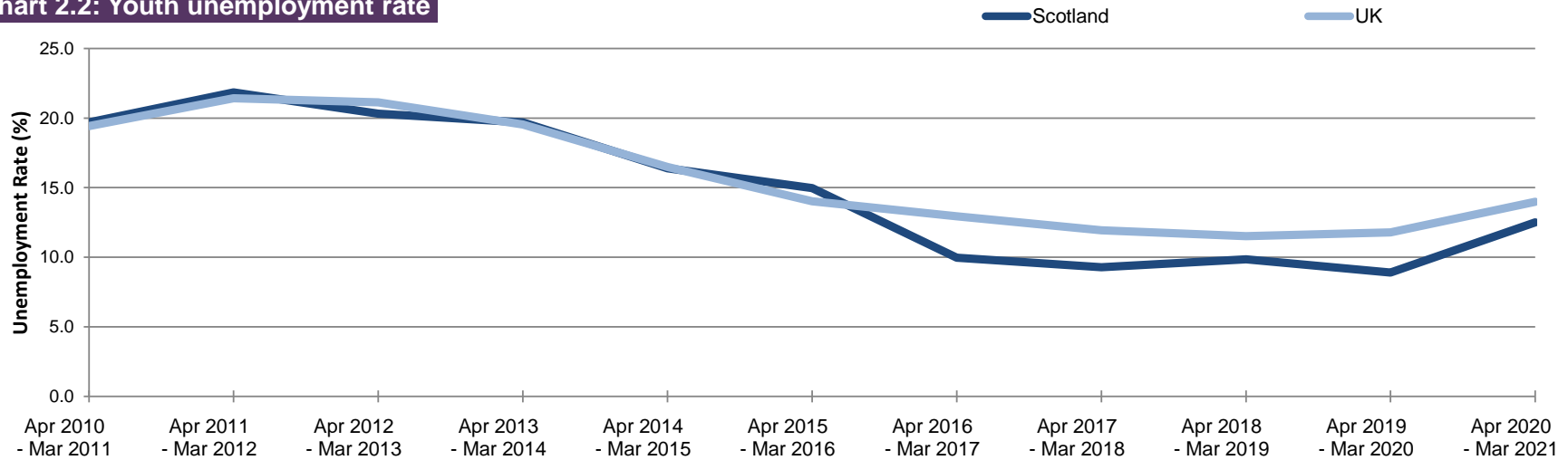


Chart 2.2: Youth unemployment rate



Source: Annual Population Survey, ONS

Table 2.2: Employment, ILO unemployment and inactivity for 16-24 age group by gender, Scotland and UK (APS), Apr 2020 - Mar 2021

Scotland										
	Level ('000)					Rate				
	Level	Change on year		change on Apr 2010 - Mar 2011		Rate (%)	Change on year (%pts)		change on Apr 2010 - Mar 2011 (%pts)	
Employment*										
Male	146	-9	↓	-27	↓	52.2	-2.3	↓	-3.6	↓
Female	147	-6	↓	-27	↓	53.5	-1.4	↓	-2.5	↓
ILO Unemployment **										
Male	22	6	↑	-30	↓	13.1	3.7	↑	-10.0	↓
Female	20	6	↑	-13	↓	11.9	3.5	↑	-4.1	↓
Inactivity *										
Male	111	-2	↓	26	↑	39.9	0.1	↑	12.5	↑
Female	108	-4	↓	5	↑	39.3	-0.8	↓	5.9	↑
UK										
	Level ('000)					Rate				
	Level	Change on year		change on Apr 2010 - Mar 2011		Rate (%)	Change on year (%pts)		change on Apr 2010 - Mar 2011 (%pts)	
Employment*										
Male	1,745	-141	↓	-134	↓	50.0	-3.6	↓	-1.0	↓
Female	1,747	-88	↓	-50	↓	52.2	-2.2	↓	2.9	↑
ILO Unemployment **										
Male	320	32	↑	-200	↓	15.5	2.2	↑	-6.2	↓
Female	248	40	↑	-118	↓	12.4	2.2	↑	-4.5	↓
Inactivity *										
Male	1,428	78	↑	142	↑	40.9	2.6	↑	6.0	↑
Female	1,350	20	↑	-129	↓	40.4	0.9	↑	-0.2	↓

Source: Annual Population Survey, ONS

Notes: *denominator = 16-24 population; ** denominator = economically active population aged 16-24

IMPORTANT NOTE: Annual Population Survey (APS) responses for periods from April 2019 - March 2020 onwards have been reweighted to new populations derived using growth rates from HM Revenue and Customs (HMRC) Real Time Information (RTI) to allow for different trends during the COVID-19 pandemic. Annual comparisons within this table are therefore based on estimates which may differ from those previously published. For further information, see Notes (page 44).

Charts 2.3 and 2.4: Youth employment and unemployment by gender, Scotland (APS)

Chart 2.3: Youth employment rate by gender

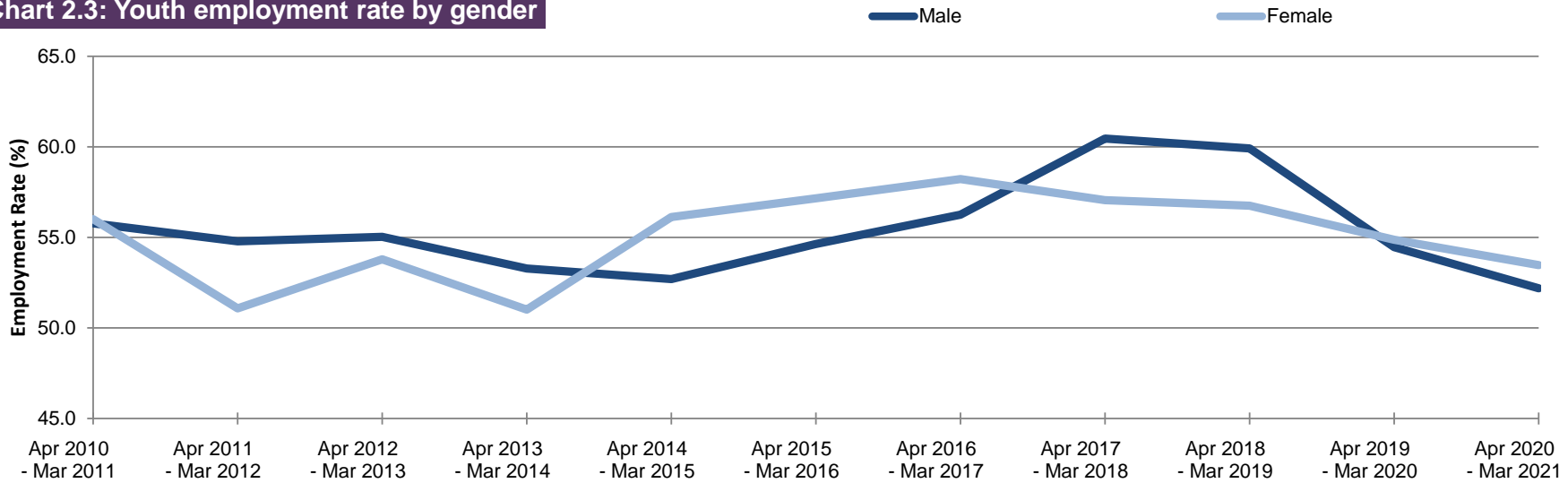
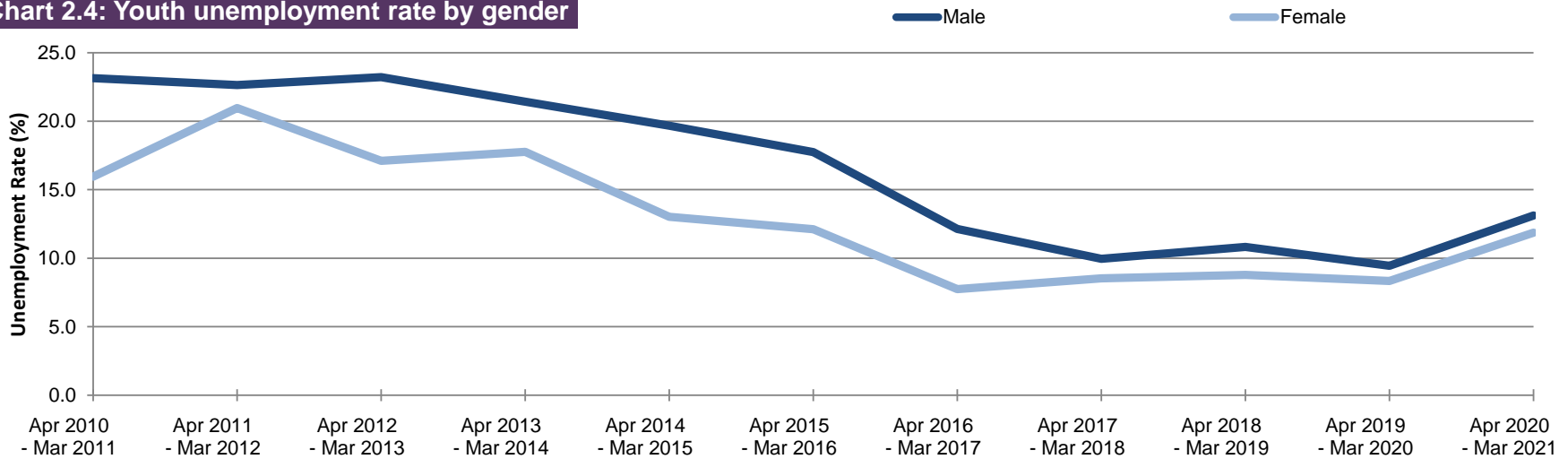


Chart 2.4: Youth unemployment rate by gender



Source: Annual Population Survey, ONS

Table 2.3: Youth Unemployment (16-24) by Government Office Region (LFS), Apr-Jun 2021
not seasonally adjusted (Official Statistics)

	Level (000's)	change on year	change on 2011	Rate (%)	%pt change on year	%pt change on 2011
North East	22	-8 ↓	-21 ↓	13.8	-1.5 ↓	-7.7 ↓
North West	54	4 ↑	-75 ↓	12.2	1.5 ↑	-11.9 ↓
Yorkshire and The Humber	44	10 ↑	-33 ↓	12.7	3.5 ↑	-7.2 ↓
East Midlands	36	-14 ↓	-35 ↓	12.1	-3.4 ↓	-8.0 ↓
West Midlands	52	-7 ↓	-36 ↓	14.4	-2.6 ↓	-8.1 ↓
East	31	-15 ↓	-46 ↓	8.9	-3.5 ↓	-8.8 ↓
London	83	13 ↑	-46 ↓	18.1	3.0 ↑	-7.1 ↓
South East	70	11 ↑	-21 ↓	13.1	2.9 ↑	-1.4 ↓
South West	35	-20 ↓	-27 ↓	9.7	-5.1 ↓	-6.1 ↓
Wales	24	5 ↑	-25 ↓	11.6	1.9 ↑	-11.1 ↓
Northern Ireland	11	5 ↑	-12 ↓	12.0	6.3 ↑	-6.8 ↓
Scotland	32	-14 ↓	-58 ↓	9.3	-4.4 ↓	-11.9 ↓
United Kingdom	493	-31 ↓	-434 ↓	12.5	-0.2 ↓	-7.7 ↓
England	425	-27 ↓	-339 ↓	12.9	-0.1 ↓	-7.1 ↓

Source: Labour Force Survey, ONS

Table 2.4: Youth Employment (16-24) by UK Countries and Regions (LFS), Apr-Jun 2021
not seasonally adjusted (Official Statistics)

	Level (000's)	change on year	change on 2011	Rate (%)	%pt change on year	%pt change on 2011
North East	135	-31 ↓	-19 ↓	47.9	-10.2 ↓	-1.0 ↓
North West	389	-33 ↓	-17 ↓	51.8	-3.8 ↓	3.8 ↑
Yorkshire and The Humber	302	-36 ↓	-7 ↓	50.1	-5.6 ↓	2.7 ↑
East Midlands	263	-10 ↓	-20 ↓	51.7	-1.3 ↓	-1.1 ↓
West Midlands	307	19 ↑	5 ↑	48.6	3.4 ↑	3.2 ↑
East	314	-6 ↓	-42 ↓	54.6	-0.7 ↓	-2.0 ↓
London	374	-18 ↓	-8 ↓	40.7	-1.9 ↓	2.1 ↑
South East	461	-55 ↓	-70 ↓	51.5	-5.6 ↓	-4.8 ↓
South West	323	6 ↑	-4 ↓	58.6	1.6 ↑	1.9 ↑
Wales	183	7 ↑	16 ↑	55.2	2.8 ↑	9.7 ↑
Northern Ireland	83	-18 ↓	-18 ↓	42.0	-8.7 ↓	-3.2 ↓
Scotland	318	23 ↑	-18 ↓	58.1	5.3 ↑	4.3 ↑
United Kingdom	3,454	-152 ↓	-201 ↓	50.8	-1.7 ↓	1.2 ↑
England	2,870	-164 ↓	-180 ↓	50.2	-2.4 ↓	0.6 ↑

Source: Labour Force Survey, ONS

Quality indicator

Shaded estimates are based on a small sample size. This may result in a less precise estimates, which should be used with caution.

Unshaded estimates are based on a larger sample size. This is likely to result in estimates of higher precision, although they will still be subject to some sampling variability.

Note on data sources: The Labour Force Survey (LFS) is a survey of households collected and published by the Office for National Statistics (ONS). Further information on reliability can be accessed in the ONS publication at: <https://www.ons.gov.uk/employmentandlabourmarket/peopleinwork/employmentandemployeetypes/methodologies/measuringandreportingreliabilityoflabourforcesurveyandannualpopulationsurveyestimates>

The LFS estimates are from the same source as the headline figures but due to the relatively small sample sizes and subsequent sampling variability, the figures should be used with caution and are designated as Official Statistics. The preferred source of labour market indicators by age band for regions/countries of the UK is the Annual Population Survey (APS). The APS estimates are available in the headline indicator tables (HI01 to HI12) of the ONS Labour market in the regions of the UK release: <https://www.ons.gov.uk/employmentandlabourmarket/peopleinwork/employmentandemployeetypes/bulletins/regionallabourmarket/previousReleases>

IMPORTANT NOTE: Labour Force Survey (LFS) estimates from Jan-Mar 2020 to Feb-Apr 2021 were reweighted in July 2021 to new populations derived using growth rates from HM Revenue and Customs (HMRC) Real Time Information (RTI) to allow for different trends during the COVID-19 pandemic. Annual comparisons within this table are therefore based on estimates which may differ from those previously published. For further information, see Notes (page 44).

Table 3.1a: Employment rates and levels of the population aged 16-64 by disability status, Scotland 2014-2020 (APS)

	Equality Act Disabled Employment		Not Equality Act Disabled Employment		Disabled Employment Rate Gap (%pt)
	Rate	Level (000s)	Rate	Level (000s)	
Jan 2014 - Dec 2014	41.5	251	79.4	2,213	37.9
Jan 2015 - Dec 2015	41.9	263	80.3	2,229	38.4
Jan 2016 - Dec 2016	42.8	279	80.2	2,217	37.4
Jan 2017 - Dec 2017	45.3	297	81.2	2,245	35.9
Jan 2018 - Dec 2018	45.6	307	81.1	2,231	35.5
Jan 2019 - Dec 2019	49.0	349	81.6	2,215	32.6
Jan 2020 - Dec 2020	47.2	336	80.6	2,175	33.4
<i>Change on year</i>	-1.8	-12	-1.1	-39	0.7

Source: Annual Population Survey, ONS

Table 3.1b: Employment rates and levels of the population aged 16-64 by disability status, Scotland 2013-2021 (LFS)

not seasonally adjusted

	Equality Act Disabled Employment		Not Equality Act Disabled Employment		Disabled Employment Rate Gap (%pt)
	Rate	Level (000s)	Rate	Level (000s)	
Apr-Jun 2013	40.8	245	78.9	2,205	38.1
Apr-Jun 2014	41.7	241	80.0	2,255	38.4
Apr-Jun 2015	43.7	272	81.0	2,255	37.2
Apr-Jun 2016	40.9	250	81.4	2,277	40.5
Apr-Jun 2017	43.0	262	82.4	2,320	39.4
Apr-Jun 2018	47.3	309	82.2	2,271	34.9
Apr-Jun 2019	48.6	337	82.7	2,258	34.1
Apr-Jun 2020	50.4	367	80.9	2,171	30.5
Apr-Jun 2021	48.0	358	82.0	2,176	33.9
<i>Change on year</i>	-2.3	-9	1.1	5	3.4

Source: Labour Force Survey, ONS

Questions used to derive current disability status of a person were changed in the April-June 2013 dataset. Subsequent datasets are therefore not directly comparable to equivalent periods in earlier years. See **Notes (p44)** for further information.

Information is shown from the Labour Force Survey (LFS) and the Annual Population Survey (APS) for the same measure. Although the LFS is more timely, the APS is based on a larger sample size and therefore has a higher degree of reliability.

IMPORTANT NOTE: Labour Force Survey (LFS) estimates from Jan-Mar 2020 to Feb-Apr 2021 were reweighted in July 2021 to new populations derived using growth rates from HM Revenue and Customs (HMRC) Real Time Information (RTI) to allow for different trends during the COVID-19 pandemic. Annual Population Survey (APS) responses for periods from April 2019 - March 2020 onwards have also been reweighted by the same method. Annual comparisons within this table are therefore based on estimates which may differ from those previously published. For further information, see Notes (page 44).

Table 3.2: Employment rates and levels of the population aged 16-64 by ethnicity and gender, Scotland, 2011 - 2020
not seasonally adjusted

All

	White Employment		Minority Ethnic Employment		Ethnicity Employment Rate Gap (%pt)
	Rate	Level (000s)	Rate	Level (000s)	
Jan 2011 - Dec 2011	70.8	2,348	61.4	72	9.4
Jan 2012 - Dec 2012	71.0	2,332	59.0	80	12.0
Jan 2013 - Dec 2013	71.3	2,351	56.0	67	15.4
Jan 2014 - Dec 2014	73.2	2,386	60.0	90	13.2
Jan 2015 - Dec 2015	73.7	2,401	58.9	85	14.8
Jan 2016 - Dec 2016	73.8	2,401	57.5	98	16.3
Jan 2017 - Dec 2017	75.0	2,444	60.4	107	14.5
Jan 2018 - Dec 2018	75.1	2,453	55.4	97	19.7
Jan 2019 - Dec 2019	75.7	2,460	59.3	115	16.4
Jan 2020 - Dec 2020	74.0	2,413	64.2	111	9.7
<i>Change on year</i>	-1.8	-46	4.9	-4	-6.7

Male

	White Employment		Minority Ethnic Employment		Ethnicity Employment Rate Gap (%pt)
	Rate	Level (000s)	Rate	Level (000s)	
Jan 2011 - Dec 2011	74.9	1,211	72.9	45	2.1
Jan 2012 - Dec 2012	74.6	1,196	72.1	49	2.5
Jan 2013 - Dec 2013	74.8	1,202	63.8	39	11.0
Jan 2014 - Dec 2014	76.7	1,221	72.6	53	4.1
Jan 2015 - Dec 2015	76.3	1,214	73.3	51	3.0
Jan 2016 - Dec 2016	77.1	1,228	71.5	58	5.7
Jan 2017 - Dec 2017	78.1	1,243	71.9	63	6.2
Jan 2018 - Dec 2018	78.5	1,256	67.3	55	11.2
Jan 2019 - Dec 2019	78.5	1,250	69.0	61	9.5
Jan 2020 - Dec 2020	76.0	1,214	73.2	60	2.9
<i>Change on year</i>	-2.5	-36	4.1	-2	-6.6

Female

	White Employment		Minority Ethnic Employment		Ethnicity Employment Rate Gap (%pt)
	Rate	Level (000s)	Rate	Level (000s)	
Jan 2011 - Dec 2011	66.9	1,136	48.9	27	18.0
Jan 2012 - Dec 2012	67.6	1,136	45.6	31	21.9
Jan 2013 - Dec 2013	68.0	1,149	47.7	28	20.4
Jan 2014 - Dec 2014	69.8	1,165	48.1	37	21.8
Jan 2015 - Dec 2015	71.2	1,187	45.2	33	26.0
Jan 2016 - Dec 2016	70.6	1,173	44.8	40	25.7
Jan 2017 - Dec 2017	72.0	1,200	49.4	44	22.6
Jan 2018 - Dec 2018	71.8	1,197	45.0	42	26.8
Jan 2019 - Dec 2019	73.1	1,210	51.1	54	22.0
Jan 2020 - Dec 2020	72.0	1,200	56.2	51	15.8
<i>Change on year</i>	-1.1	-11	5.1	-3	-6.2

Source: Annual Population Survey, ONS (Jan-Dec datasets)

IMPORTANT NOTE: Annual Population Survey (APS) responses for periods from April 2019 - March 2020 onwards have been reweighted to new populations derived using growth rates from HM Revenue and Customs (HMRC) Real Time Information (RTI) to allow for different trends during the COVID-19 pandemic. Annual comparisons within this table are therefore based on estimates which may differ from those previously published. For further information, see Notes (page 44).

Table 3.3: Employment patterns, Scotland, Apr-Jun 2021, (Thousands)
not seasonally adjusted

	Apr-Jun 2021 (000s)	change on Apr- Jun 2020 (000s)		change on Apr- Jun 2011 (000s)	
Total‡	2,642	3	↑	128	↑
Employees‡	2,374	72	↑	149	↑
Self employed‡	258	-66	↓	-18	↓
Unpaid family workers	6	-1	↓	0	↔
Government-supported training and employment programmes	4	-1	↓	-3	↓
Full-time workers	1,960	13	↑	148	↑
Part-time workers	676	-11	↓	-19	↓
Workers with second jobs	75	-14	↓	-22	↓
Temporary workers	117	-16	↓	-21	↓
All males in employment					
Total‡	1,333	-4	↓	35	↑
Employees‡	1,162	28	↑	60	↑
Self employed‡	167	-32	↓	-20	↓
Unpaid family workers	3	*	▪	-1	↓
Government-supported training and employment programmes	*	*	▪	*	▪
Full-time workers	1,153	-10	↓	32	↑
Part-time workers	175	4	↑	3	↑
Workers with second jobs	23	-14	↓	-19	↓
Temporary workers	59	3	↑	-10	↓
All females in employment					
Total‡	1,309	8	↑	93	↑
Employees‡	1,212	44	↑	89	↑
Self employed‡	90	-35	↓	2	↑
Unpaid family workers	3	-2	↓	1	↑
Government-supported training and employment programmes	2	*	▪	1	↑
Full-time workers	807	23	↑	116	↑
Part-time workers	501	-14	↓	-22	↓
Workers with second jobs	52	0	↔	-3	↓
Temporary workers	58	-18	↓	-11	↓

Source: Labour Force Survey, ONS

‡ Includes people who did not state whether they worked part-time or full-time.

* Estimate suppressed as below reliability threshold.

Quality indicator

Shaded estimates are based on a small sample size. This may result in less precise estimates, which should be used with caution.

Unshaded estimates are based on a larger sample size. This is likely to result in estimates of higher precision, although they will still be subject to some sampling variability.

IMPORTANT NOTE: Labour Force Survey (LFS) estimates from Jan-Mar 2020 to Feb-Apr 2021 were reweighted in July 2021 to new populations derived using growth rates from HM Revenue and Customs (HMRC) Real Time Information (RTI) to allow for different trends during the COVID-19 pandemic. Quarterly and annual comparisons within this table are therefore based on estimates which may differ from those previously published. For further information, see Notes (page 44).

Table 3.4: Underemployment, Scotland and UK, 2010-2020
not seasonally adjusted

This table has been suspended and will be re-instated following the release of the Labour Market Statistics publications on 12th October 2021.

Table 3.5: Employment rates by highest qualification held and gender, Scotland and UK, Jan 2020 - Dec 2020
not seasonally adjusted

	Scotland			UK		
	Jan 2020 - Dec 2020	Change on year (%pt)		Jan 2020 - Dec 2020	Change on year (%pt)	
All						
Degree level and above	84.2	-0.1	↓	85.9	-0.6	↓
SVQ 4	78.8	-1.5	↓	80.5	-0.7	↓
SVQ 3	71.4	-2.6	↓	75.1	-0.9	↓
SVQ 2	64.2	-3.9	↓	67.1	-2.4	↓
SVQ 1	50.5	-5.0	↓	62.3	-2.2	↓
Other qualification	69.1	-5.9	↓	74.8	-0.3	↓
No qualifications	46.2	-5.1	↓	43.3	-2.6	↓
Males						
Degree level and above	85.6	-0.7	↓	88.6	-0.6	↓
SVQ 4	83.4	0.0	↔	84.4	-1.0	↓
SVQ 3	75.3	-3.9	↓	78.3	-1.4	↓
SVQ 2	67.3	-4.5	↓	71.5	-2.6	↓
SVQ 1	52.3	-7.2	↓	67.6	-3.8	↓
Other qualification	77.4	-4.4	↓	82.1	-3.1	↓
No qualifications	47.6	-5.6	↓	50.3	-3.7	↓
Females						
Degree level and above	83.0	0.4	↑	83.6	-0.6	↓
SVQ 4	75.2	-2.7	↓	77.2	-0.6	↓
SVQ 3	66.3	-0.9	↓	71.4	-0.1	↓
SVQ 2	61.6	-3.2	↓	63.1	-2.3	↓
SVQ 1	48.4	-3.3	↓	55.9	-0.7	↓
Other qualification	59.9	-7.2	↓	65.1	2.8	↑
No qualifications	44.5	-4.8	↓	35.2	-1.7	↓

Source: Annual Population Survey, ONS

IMPORTANT NOTE: Annual Population Survey (APS) responses for periods from April 2019 - March 2020 onwards have been reweighted to new populations derived using growth rates from HM Revenue and Customs (HMRC) Real Time Information (RTI) to allow for different trends during the COVID-19 pandemic. Annual comparisons within this table are therefore based on estimates which may differ from those previously published. For further information, see Notes (page 44).

Table 4.1: Unemployment by duration, Annual Population Survey, Jan 2020 - Dec 2020
not seasonally adjusted

Scotland	Level (000s)	Change on year			% Change on year	
Less than 6 months	71	15	↑	27.4	↑	
6 months and less than 12 months	17	5	↑	41.3	↑	
1 year and less than 2 years	13	-1	↓	-4.1	↓	
2 years or more	17	2	↑	10.0	↑	

UK	Level (000s)	Change on year			% Change on year	
Less than 6 months	1,007	209	↑	26.2	↑	
6 months and less than 12 months	236	46	↑	24.3	↑	
1 year and less than 2 years	152	-12	↓	-7.1	↓	
2 years or more	161	8	↑	4.9	↑	

Source: Annual Population Survey, ONS

Note: Levels based on persons aged 16 and over

IMPORTANT NOTE: Annual Population Survey (APS) responses for periods from April 2019 - March 2020 onwards have been reweighted to new populations derived using growth rates from HM Revenue and Customs (HMRC) Real Time Information (RTI) to allow for different trends during the COVID-19 pandemic. Annual comparisons within this table are therefore based on estimates which may differ from those previously published. For further information, see Notes (page 44).

Table 4.2: Model-based unemployment levels and rates by local authority
not seasonally adjusted

	Jan 2020-Dec 2020		Change on year			Change on Jan 2010-Dec 2010				
	Rate	Level	Rate (%pt)	Level Change		Rate (%pt)	Level Change			
Aberdeen City	4.5	5,500	1.4	↑	1,400	↑	-0.6	↓	-1,000	↓
Aberdeenshire	2.8	4,000	0.5	↑	700	↑	-0.8	↓	-1,000	↓
Angus	3.9	2,100	0.7	↑	300	↑	-2.7	↓	-1,700	↓
Argyll and Bute	3.4	1,400	0.5	↑	200	↑	-2.8	↓	-1,300	↓
City of Edinburgh	3.9	11,100	1.3	↑	3,900	↑	-2.6	↓	-4,900	↓
Clackmannanshire	4.7	1,200	1.4	↑	400	↑	-2.8	↓	-900	↓
Dumfries and Galloway	4.1	2,600	0.9	↑	400	↑	-1.8	↓	-1,800	↓
Dundee City	5.5	4,000	0.1	↑	200	↑	-3.7	↓	-2,900	↓
East Ayrshire	5.2	3,000	0.7	↑	300	↑	-3.8	↓	-2,600	↓
East Dunbartonshire	3.2	1,700	0.6	↑	300	↑	-2.9	↓	-1,500	↓
East Lothian	4.1	2,200	1.4	↑	700	↑	-2.8	↓	-1,200	↓
East Renfrewshire	3.5	1,600	0.8	↑	400	↑	-2.5	↓	-1,100	↓
Falkirk	4.4	3,700	0.7	↑	700	↑	-3.4	↓	-2,500	↓
Fife	4.8	8,500	0.7	↑	1,200	↑	-3.8	↓	-7,400	↓
Glasgow City	5.3	17,300	0.6	↑	2,800	↑	-6.6	↓	-16,400	↓
Highland	3.2	3,900	0.4	↑	600	↑	-1.4	↓	-1,800	↓
Inverclyde	5.2	1,800	0.4	↑	100	↑	-3.0	↓	-1,600	↓
Midlothian	3.6	1,700	0.9	↑	400	↑	-3.8	↓	-1,400	↓
Moray	3.6	1,800	0.4	↑	200	↑	-1.0	↓	-500	↓
Na h-Eileanan Siar	3.2	400	0.8	↑	100	↑	-3.3	↓	-400	↓
North Ayrshire	5.3	3,100	0.0	↔	-200	↓	-6.5	↓	-4,400	↓
North Lanarkshire	5.3	8,800	1.2	↑	1,700	↑	-5.1	↓	-8,900	↓
Orkney Islands	2.7	300	0.8	↑	100	↑	-0.6	↓	-100	↓
Perth and Kinross	3.7	2,800	1.4	↑	900	↑	-1.6	↓	-1,000	↓
Renfrewshire	4.3	4,000	0.6	↑	600	↑	-4.5	↓	-3,600	↓
Scottish Borders	3.3	1,900	0.3	↑	200	↑	-2.8	↓	-1,400	↓
Shetland Islands	2.5	300	0.3	↑	0	↔	-1.0	↓	-200	↓
South Ayrshire	4.9	2,500	1.2	↑	600	↑	-3.9	↓	-2,200	↓
South Lanarkshire	4.2	6,900	1.0	↑	1,800	↑	-3.5	↓	-5,500	↓
Stirling	3.5	1,600	-0.3	↓	-200	↓	-3.6	↓	-1,500	↓
West Dunbartonshire	5.0	2,200	0.6	↑	200	↑	-5.4	↓	-2,400	↓
West Lothian	4.0	3,800	1.1	↑	1,000	↑	-3.1	↓	-2,800	↓
Scotland	4.3	117,500	0.8	↑	21,700	↑	-3.4	↓	-88,000	↓

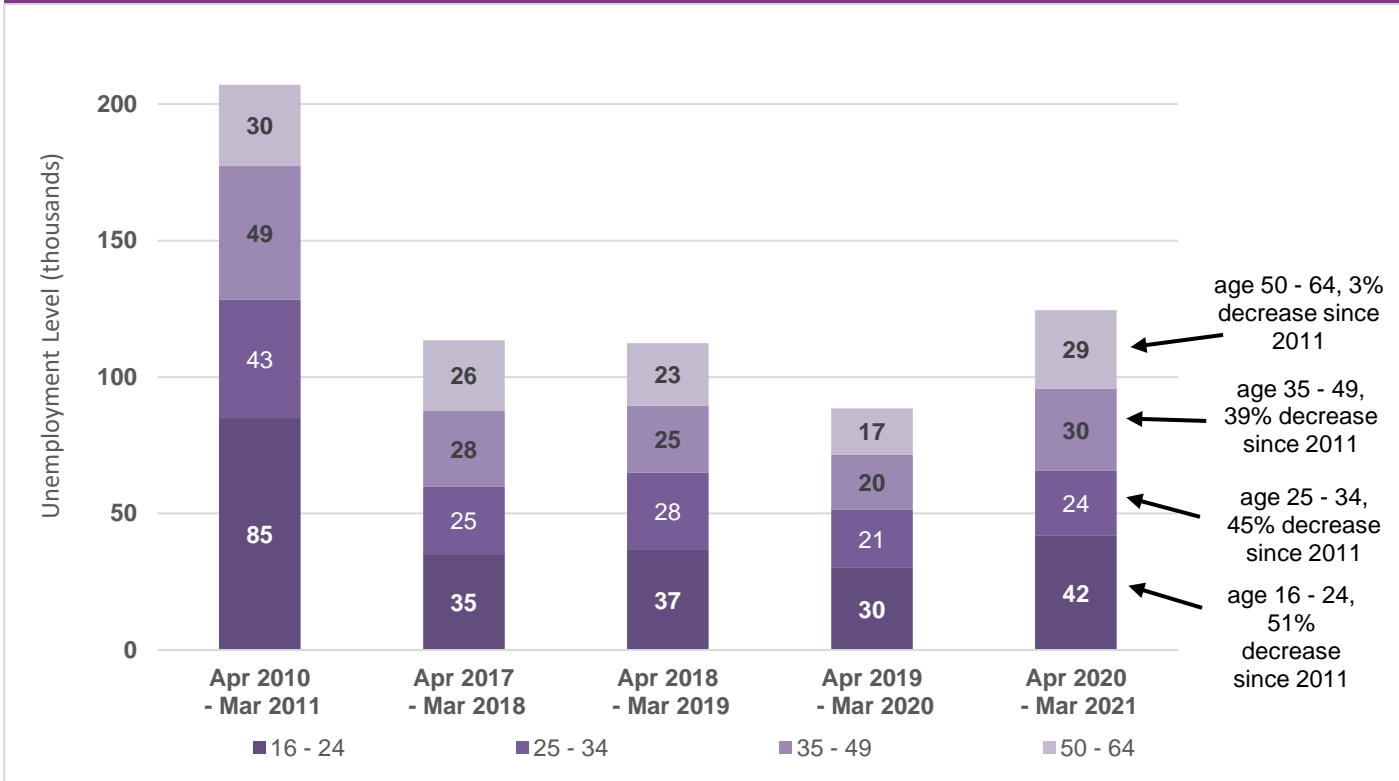
Sources: Annual Population Survey (ONS), Claimant Count (ONS)

Notes:

1. Levels rounded to the nearest hundred.
2. Proportions are calculated on unrounded figures.
3. Totals may not equal the sum of individual parts due to rounding.

IMPORTANT NOTE: Annual Population Survey (APS) responses used to estimate local level unemployment within this table are weighted to official population projections based on demographic trends that pre-date the COVID-19 pandemic. A reweighting process which uses growth rates from from HM Revenue and Customs (HMRC) Real Time Information (RTI) to allow for different trends during the COVID-19 pandemic is currently being carried out. Until this reweighting is complete, levels and changes in levels should be used with caution, although rates published from the APS remain robust. For further information, see Notes (page 44).

Chart 4.1: ILO unemployment levels by age-group (16-64), Scotland
not seasonally adjusted

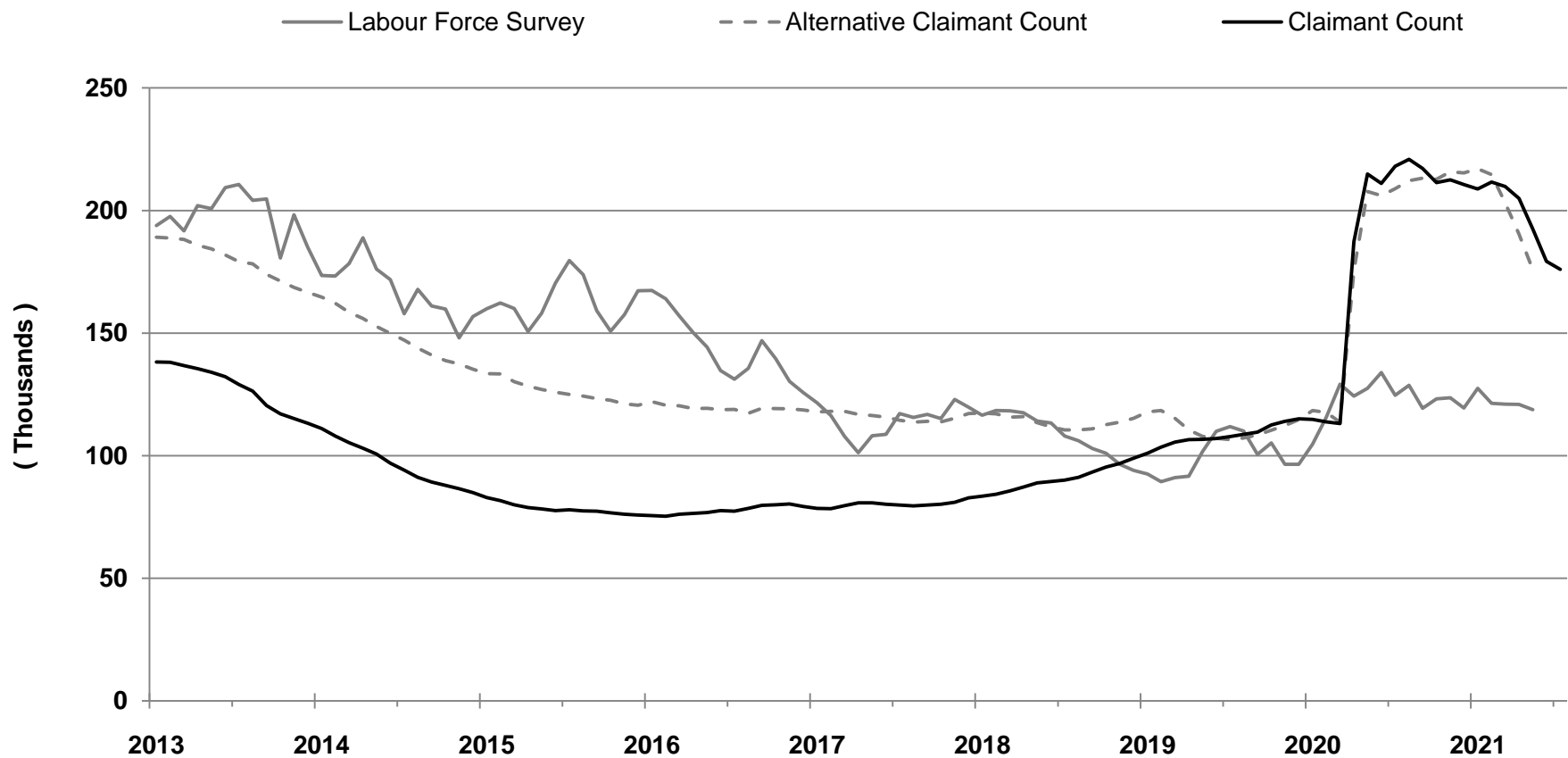


Source: Annual Population Survey, ONS (Apr-Mar datasets)

IMPORTANT NOTE: Annual Population Survey (APS) responses for periods from April 2019 - March 2020 onwards have been reweighted to new populations derived using growth rates from HM Revenue and Customs (HMRC) Real Time Information (RTI) to allow for different trends during the COVID-19 pandemic. Data for April 2019 - March 2020 in this chart is therefore based on estimates which may differ from those previously published. For further information, see Notes (page 44).

Chart 5.1: Unemployment, Alternative Claimant Count and Claimant Count levels, Scotland, January 2013 - July 2021

seasonally adjusted



Sources: Labour Force Survey (ONS): Dec-Feb 2013 - Apr-Jun 2021

Claimant Count (ONS), Jan 2013 - July 2021

Alternative Claimant Count (DWP): Jan 2013 - May 2021

IMPORTANT NOTE: Labour Force Survey (LFS) estimates from Jan-Mar 2020 to Feb-Apr 2021 were reweighted in July 2021 to new populations derived using growth rates from HM Revenue and Customs (HMRC) Real Time Information (RTI) to allow for different trends during the COVID-19 pandemic. For further information, see Notes (page 44).

Table 5.1a: Claimant Count levels, July 2021 - (Experimental data)

	Level	Change on previous month		Change on previous year		Change on July 2013	
	(000s)	(000s)		(000s)		(000s)	
Scotland	176	-3	↓	-42	↓	47	↑
England	1,973	-2	↓	-270	↓	809	↑
Wales	94	-1	↓	-25	↓	21	↑
N Ireland	50	-1	↓	-11	↓	-13	↓
UK	2,293	-8	↓	-348	↓	865	↑

Table 5.1b: Claimant Count rates, July 2021 - (Experimental data)

	Rate	Change on previous month		Change on previous year		Change on July 2013	
	(%)	(%pts)		(%pts)		(%pts)	
Scotland	5.5	-0.1	↓	-1.3	↓	0.8	↑
England	5.7	0.0	↔	-0.8	↓	1.8	↑
Wales	5.6	-0.1	↓	-1.5	↓	0.5	↑
N Ireland	5.1	-0.1	↓	-1.1	↓	-1.9	↓
UK	5.7	0.0	↔	-0.9	↓	1.6	↑

Source: Claimant Count, ONS (seasonally adjusted)

Notes:

1. Levels rounded to nearest 1000.
2. The Claimant Count rate is calculated as a proportion of Claimant Count + Workforce jobs.
3. Claimant count rates are workplace based.
4. Data in these tables are seasonally adjusted. Therefore, they are not consistent with Table 5.2 onwards as these are based on data that is not seasonally adjusted.

ONS re-classified the Claimant Count series as experimental following the introduction of DWP Universal Credit and concerns that this series may be misleading.

See Notes (page 44) for further information.

Table 5.2: Claimant Count by local authority (Experimental data)
not seasonally adjusted

	July 2021 Total Claimants	% Change on year		Claimant Count rate (%)	Change on year (%pts)	
Aberdeen City	8,085	-8.0	↓	5.2	-0.4	↓
Aberdeenshire	5,285	-18.0	↓	3.3	-0.7	↓
Angus	3,140	-20.7	↓	4.6	-1.2	↓
Argyll and Bute	2,235	-31.1	↓	4.4	-2.0	↓
City of Edinburgh	14,945	-18.3	↓	4.1	-0.9	↓
Clackmannanshire	1,710	-22.6	↓	5.4	-1.6	↓
Dumfries and Galloway	3,850	-23.6	↓	4.5	-1.4	↓
Dundee City	6,190	-16.3	↓	6.3	-1.2	↓
East Ayrshire	4,980	-18.9	↓	6.6	-1.5	↓
East Dunbartonshire	2,120	-26.5	↓	3.3	-1.2	↓
East Lothian	2,755	-23.9	↓	4.2	-1.3	↓
East Renfrewshire	1,710	-29.3	↓	3.0	-1.2	↓
Falkirk	4,975	-21.5	↓	4.9	-1.3	↓
Fife	12,795	-18.7	↓	5.5	-1.3	↓
Glasgow City	32,095	-14.6	↓	7.1	-1.2	↓
Highland	5,595	-33.6	↓	3.9	-2.0	↓
Inverclyde	2,805	-14.4	↓	5.8	-1.0	↓
Midlothian	2,485	-18.8	↓	4.3	-1.0	↓
Moray	2,375	-20.8	↓	4.1	-1.1	↓
Na h-Eileanan Siar	590	-32.5	↓	3.8	-1.8	↓
North Ayrshire	5,675	-22.2	↓	7.0	-2.0	↓
North Lanarkshire	12,425	-20.9	↓	5.7	-1.5	↓
Orkney Islands	285	-28.9	↓	2.1	-0.9	↓
Perth and Kinross	3,425	-24.7	↓	3.8	-1.2	↓
Renfrewshire	5,960	-23.2	↓	5.2	-1.6	↓
Scottish Borders	2,995	-21.9	↓	4.4	-1.2	↓
Shetland Islands	365	-30.7	↓	2.6	-1.2	↓
South Ayrshire	3,850	-20.6	↓	5.9	-1.5	↓
South Lanarkshire	10,700	-19.8	↓	5.3	-1.3	↓
Stirling	2,125	-32.0	↓	3.5	-1.7	↓
West Dunbartonshire	3,835	-21.1	↓	6.9	-1.8	↓
West Lothian	5,360	-21.2	↓	4.6	-1.2	↓
Scotland	177,725	-19.9	↓	5.1	-1.3	↓

Source: Claimant Count, ONS

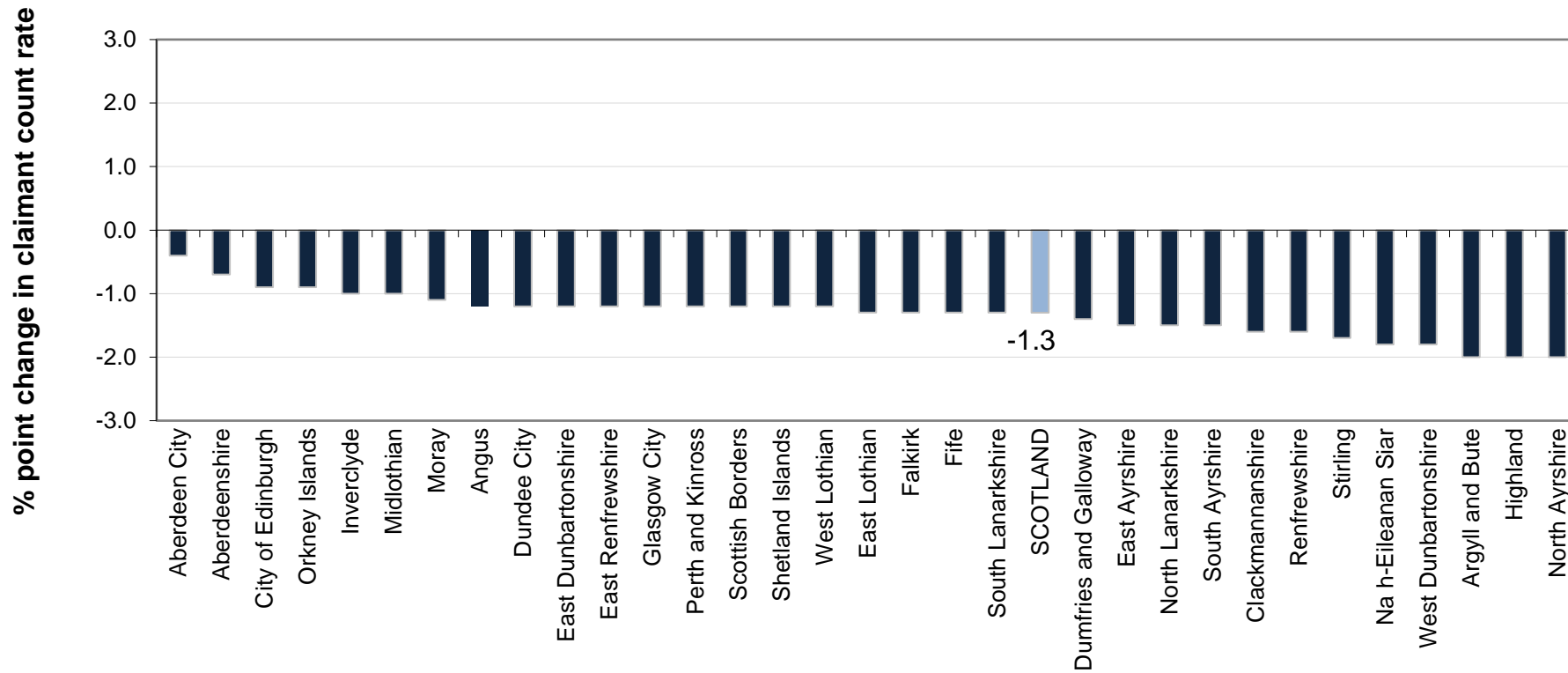
Notes:

1. Levels rounded to nearest 5.
2. The Claimant Count rate is calculated as a proportion of the resident population, aged 16-64, based on the Mid-year population estimates for 2020.

ONS re-classified the Claimant Count series as experimental following the introduction of DWP Universal Credit and concerns that this series may be misleading.

See Notes (page 44) for further information.

Chart 5.2: Change in Claimant Count rate by local authority, July 2020 to July 2021 (Experimental data)



Source: Claimant Count, ONS

Notes:

1. Claimant Count rates are based on unrounded data. Chart labels are rounded to one decimal place.
2. Claimant Count rates in each local authority and for Scotland are calculated as a proportion of the resident population, aged 16-64, based on the Mid-year population estimates for 2020.

Table 5.3: 16-24 Claimant Count levels and rates, Scotland and UK
(Experimental data)
not seasonally adjusted

	Scotland		UK	
	Level	Rate (%)	Level	Rate (%)
July 2020	46,525	8.2	532,400	7.5
July 2021	33,685	5.9	408,585	5.8
Change on year (rate as %pt)	-12,845	-2.3	-123,815	-1.8

Source: Claimant Count, ONS

Table 5.4: 16-24 Claimant Count levels and rates by gender, Scotland
(Experimental data)
not seasonally adjusted

	Male		Female	
	Level	Rate (%)	Level	Rate (%)
July 2020	28,175	9.8	18,355	6.6
July 2021	21,185	7.4	12,500	4.5
Change on year (rate as %pt)	-6,990	-2.4	-5,855	-2.1

Source: Claimant Count, ONS

Notes:

1. Levels rounded to nearest 5.
2. These Claimant Count rates for 16-24 year olds have been produced by the Scottish Government and are calculated as a proportion of the resident population, aged 16-24, based on the Mid-year population estimates for 2020.

ONS re-classified the Claimant Count series as experimental following the introduction of DWP Universal Credit and concerns that this series may be misleading.

See Notes (page 44) for further information.

Table 5.5: 16-24 Claimant Count levels and rates by Local Authority, July 2021 (Experimental data)

	Level			Rate		
	July 2021	Change on year		July 2021	Change on year (%pts)	
Scotland	33,685	-12,845	↓	5.9	-2.3	↓
<i>Local Authority Area</i>						
Aberdeen City	1,460	-260	↓	5.5	-1.0	↓
Aberdeenshire	1,125	-190	↓	5.0	-0.8	↓
Angus	675	-250	↓	6.4	-2.4	↓
Argyll and Bute	385	-255	↓	4.7	-3.2	↓
City of Edinburgh	2,325	-960	↓	3.6	-1.5	↓
Clackmannanshire	360	-185	↓	7.3	-3.7	↓
Dumfries and Galloway	655	-435	↓	5.1	-3.4	↓
Dundee City	1,400	-355	↓	6.8	-1.8	↓
East Ayrshire	990	-365	↓	8.6	-3.2	↓
East Dunbartonshire	405	-235	↓	4.0	-2.3	↓
East Lothian	535	-265	↓	5.6	-2.7	↓
East Renfrewshire	350	-215	↓	3.7	-2.2	↓
Falkirk	1,045	-300	↓	6.8	-2.0	↓
Fife	2,660	-895	↓	6.7	-2.2	↓
Glasgow City	5,410	-1,645	↓	6.9	-2.1	↓
Highland	1,015	-715	↓	4.8	-3.4	↓
Inverclyde	550	-185	↓	7.4	-2.5	↓
Midlothian	515	-180	↓	6.1	-2.1	↓
Moray	485	-225	↓	5.4	-2.6	↓
Na h-Eileanan Siar	80	-75	↓	3.8	-3.8	↓
North Ayrshire	1,145	-480	↓	8.7	-3.7	↓
North Lanarkshire	2,470	-1,015	↓	6.9	-2.8	↓
Orkney Islands	50	-40	↓	2.8	-2.2	↓
Perth and Kinross	670	-360	↓	4.9	-2.6	↓
Renfrewshire	1,125	-455	↓	6.3	-2.6	↓
Scottish Borders	625	-260	↓	6.2	-2.6	↓
Shetland Islands	85	-20	↓	4.1	-1.0	↓
South Ayrshire	745	-295	↓	7.4	-2.9	↓
South Lanarkshire	1,950	-840	↓	6.4	-2.8	↓
Stirling	450	-255	↓	3.7	-2.1	↓
West Dunbartonshire	745	-255	↓	8.7	-3.0	↓
West Lothian	1,175	-375	↓	6.5	-2.1	↓

Source: Claimant Count, ONS

Notes:

1. Levels rounded to nearest 5.

2. These Claimant Count rates for 16-24 year olds have been produced by the Scottish Government and are calculated as a proportion of the resident population, aged 16-24, based on the Mid-year population estimates for 2020.

ONS re-classified the Claimant Count series as experimental following the introduction of DWP Universal Credit and concerns that this series may be misleading.

See Notes (page 44) for further information.

Table 6.1a: Alternative Claimant Count levels, May 2021 - (Experimental data)

	Level	Change on previous month		Change on previous year		Change on May 2013	
	(000s)	(000s)		(000s)		(000s)	
Scotland	176	-15	↓	-32	↓	-9	↓
England	2,003	-164	↓	-231	↓	205	↑
Wales	96	-8	↓	-21	↓	-13	↓
N Ireland	52	-4	↓	-11	↓	-30	↓
UK	2,331	-191	↓	-295	↓	154	↑

Table 6.1b: Alternative Claimant Count rates, May 2021 - (Experimental data)

	Rate	Change on previous month		Change on previous year		Change on May 2013	
	(%)	(%pts)		(%pts)		(%pts)	
Scotland	5.0	-0.4	↓	-0.9	↓	-0.3	↓
England	5.7	-0.5	↓	-0.7	↓	0.5	↑
Wales	5.0	-0.4	↓	-1.1	↓	-0.7	↓
N Ireland	4.4	-0.3	↓	-0.9	↓	-2.6	↓
UK	5.6	-0.5	↓	-0.7	↓	0.3	↑

Source: *Alternative Claimant Count, DWP, seasonally adjusted*

Notes:

1. Levels rounded to nearest 1000.
2. The Alternative Claimant Count is the total number of people claiming unemployment-related benefits. This comprises those claiming either Jobseeker's Allowance or Universal Credit (under the Searching for Work conditionality) along with estimates of additional claimants who would have been searching for work under Universal Credit had it existed over the entire period since 2013.
3. The Alternative Claimant Count rate is calculated as a proportion of the resident population, aged 16-64, based on the Mid-year population estimates for 2019.
4. The Alternative Claimant Count publication is available online at (based on 'Table 2_region') <https://www.gov.uk/government/statistics/alternative-claimant-count-statistics-january-2013-to-may-2021>

Table 6.2: Alternative Claimant Count by local authority (Experimental data)

not seasonally adjusted

	May 2021 Total Claimants	% Change on year		Alternative Claimant Count rate (%)	Change on year (%pts)	
Aberdeen City	8,488	6.1	↑	5.4	0.3	↑
Aberdeenshire	5,567	-9.1	↓	3.5	-0.3	↓
Angus	3,239	-15.7	↓	4.7	-0.9	↓
Argyll and Bute	2,523	-24.2	↓	5.0	-1.6	↓
City of Edinburgh	16,843	-8.8	↓	4.6	-0.4	↓
Clackmannanshire	1,822	-20.3	↓	5.7	-1.4	↓
Dumfries and Galloway	4,045	-22.5	↓	4.6	-1.3	↓
Dundee City	6,352	-12.3	↓	6.4	-0.9	↓
East Ayrshire	5,115	-15.0	↓	6.7	-1.2	↓
East Dunbartonshire	2,136	-23.7	↓	3.3	-1.0	↓
East Lothian	3,030	-18.7	↓	4.6	-1.1	↓
East Renfrewshire	1,765	-25.7	↓	3.1	-1.1	↓
Falkirk	5,246	-17.2	↓	5.1	-1.1	↓
Fife	13,470	-13.4	↓	5.8	-0.9	↓
Glasgow City	32,781	-11.7	↓	7.3	-1.0	↓
Highland	6,395	-21.8	↓	4.5	-1.2	↓
Inverclyde	2,705	-14.9	↓	5.6	-1.0	↓
Midlothian	2,623	-18.0	↓	4.6	-1.0	↓
Moray	2,578	-14.2	↓	4.4	-0.7	↓
Na h-Eileanan Siar	640	-26.9	↓	4.1	-1.5	↓
North Ayrshire	5,659	-20.5	↓	6.9	-1.8	↓
North Lanarkshire	12,236	-19.9	↓	5.6	-1.4	↓
Orkney Islands	315	-22.0	↓	2.4	-0.7	↓
Perth and Kinross	3,672	-17.4	↓	4.0	-0.8	↓
Renfrewshire	6,045	-20.7	↓	5.3	-1.4	↓
Scottish Borders	3,331	-14.2	↓	4.9	-0.8	↓
Shetland Islands	350	-24.4	↓	2.5	-0.8	↓
South Ayrshire	4,117	-12.6	↓	6.2	-0.9	↓
South Lanarkshire	10,714	-18.6	↓	5.3	-1.2	↓
Stirling	2,333	-24.8	↓	3.9	-1.3	↓
West Dunbartonshire	3,875	-20.1	↓	6.9	-1.7	↓
West Lothian	5,670	-16.5	↓	4.8	-1.0	↓
Scotland	185,680	-15.1	↓	5.3	-0.9	↓

Source: Alternative Claimant Count, DWP

Notes:

1. The Alternative Claimant Count is the total number of people claiming unemployment-related benefits. This comprises those claiming either Jobseeker's Allowance or Universal Credit (under the Searching for Work conditionality) along with estimates of additional claimants who would have been searching for work under Universal Credit had it existed over the entire period since 2013.
2. The Alternative Claimant Count rates are calculated as a proportion of the resident population, aged 16-64, based on the Mid-year population estimates for 2019.

Table 6.3: 16-24 Alternative Claimant Count levels and rates, Scotland and UK (Experimental data)

	Scotland		UK	
	Level	Rate (%)	Level	Rate (%)
May 2020	39,872	6.9	493,745	7.0
May 2021	34,840	6.1	445,189	6.3
Change on year (rate as %pt)	-5,032	-0.9	-48,556	-0.7

Source: Alternative Claimant Count, DWP

Table 6.4: 16-24 Alternative Claimant Count levels and rates by gender, Scotland (Experimental data)

	Male		Female	
	Level	Rate (%)	Level	Rate (%)
May 2020	24,837	8.5	15,040	5.3
May 2021	22,205	7.6	12,638	4.5
Change on year (rate as %pt)	-2,632	-0.9	-2,402	-0.9

Source: Alternative Claimant Count, DWP

Notes:

1. The Alternative Claimant Count is the total number of people claiming unemployment-related benefits. This comprises those claiming either Jobseeker's Allowance or Universal Credit (under the Searching for Work conditionality) along with estimates of additional claimants who would have been searching for work under Universal Credit had it existed over the entire period since 2013.
2. The Alternative Claimant Count rate is calculated as a proportion of the resident population, aged 16-64, based on the Mid-year population estimates for 2019.

Table 6.5: 16-24 Alternative Claimant Count levels and rates by Local Authority (Experimental data)

	Level			Rate		
	May 2021	Change on year		May 2021	Change on year (%pts)	
Scotland	34,840	-5,032	↓	6.1	-0.9	↓
<i>Local Authority Area</i>						
Aberdeen City	1,520	46	↑	5.6	0.2	↑
Aberdeenshire	1,123	-5	↓	4.9	0.0	↔
Angus	666	-90	↓	6.2	-0.8	↓
Argyll and Bute	418	-120	↓	5.1	-1.5	↓
City of Edinburgh	2,587	-207	↓	4.0	-0.3	↓
Clackmannanshire	421	-71	↓	8.3	-1.4	↓
Dumfries and Galloway	707	-260	↓	5.4	-2.0	↓
Dundee City	1,326	-198	↓	6.4	-0.9	↓
East Ayrshire	1,025	-102	↓	8.7	-0.9	↓
East Dunbartonshire	375	-148	↓	3.7	-1.4	↓
East Lothian	607	-91	↓	6.2	-0.9	↓
East Renfrewshire	347	-101	↓	3.6	-1.1	↓
Falkirk	1,085	-128	↓	7.0	-0.8	↓
Fife	2,724	-261	↓	6.8	-0.7	↓
Glasgow City	5,405	-719	↓	6.8	-0.9	↓
Highland	1,203	-244	↓	5.7	-1.1	↓
Inverclyde	533	-65	↓	7.0	-0.9	↓
Midlothian	576	-51	↓	6.7	-0.6	↓
Moray	526	-74	↓	5.7	-0.8	↓
Na h-Eileanan Siar	89	-43	↓	4.3	-2.1	↓
North Ayrshire	1,156	-182	↓	8.6	-1.4	↓
North Lanarkshire	2,410	-565	↓	6.7	-1.6	↓
Orkney Islands	59	-8	↓	3.2	-0.4	↓
Perth and Kinross	702	-166	↓	5.1	-1.2	↓
Renfrewshire	1,140	-228	↓	6.3	-1.3	↓
Scottish Borders	683	-57	↓	6.8	-0.6	↓
Shetland Islands	72	-23	↓	3.5	-1.1	↓
South Ayrshire	820	-58	↓	8.0	-0.6	↓
South Lanarkshire	2,036	-475	↓	6.6	-1.5	↓
Stirling	508	-86	↓	4.1	-0.7	↓
West Dunbartonshire	767	-135	↓	8.8	-1.5	↓
West Lothian	1,232	-127	↓	6.8	-0.7	↓

Source: *Alternative Claimant Count, DWP*

Notes:

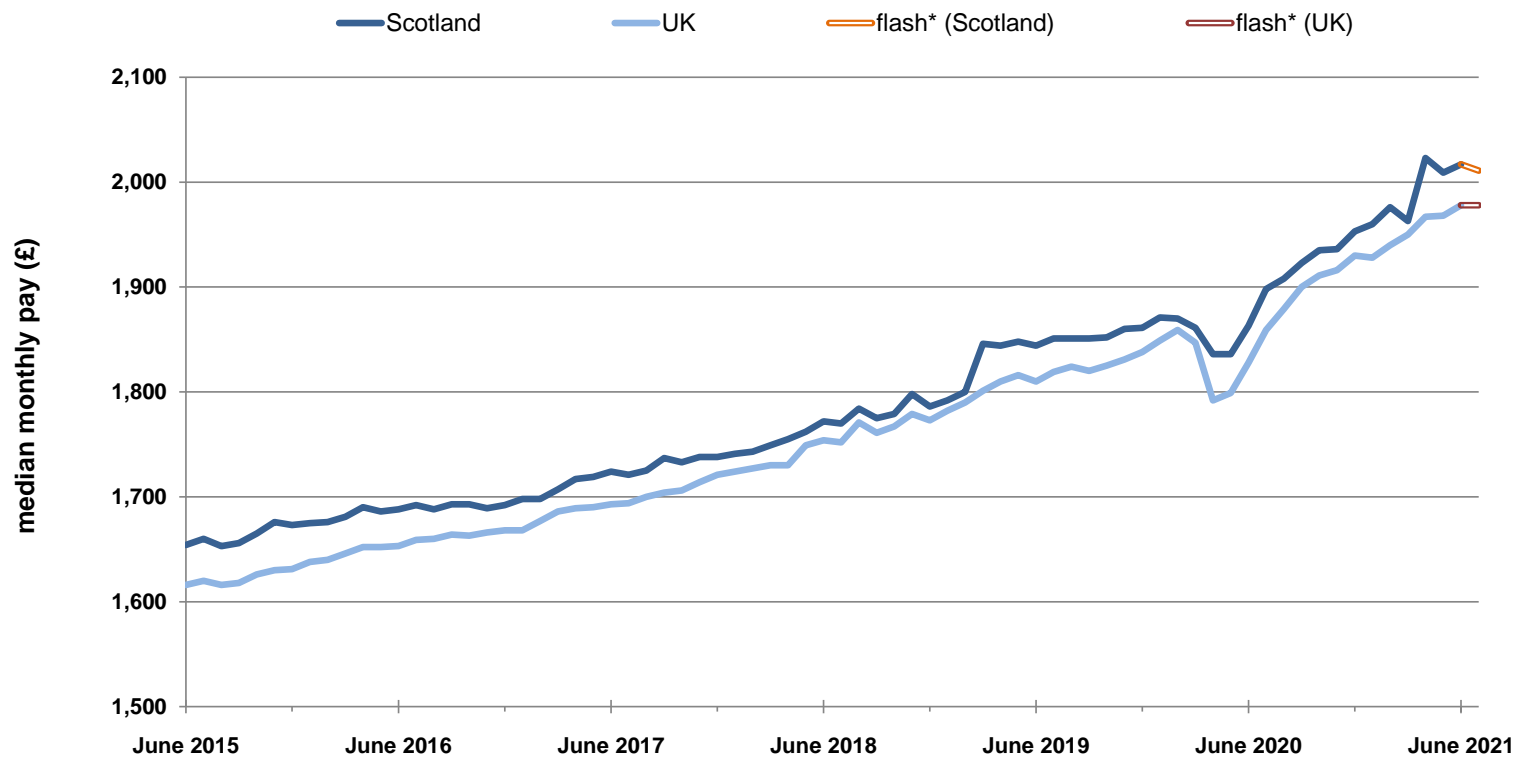
1. The Alternative Claimant Count is the total number of people claiming unemployment-related benefits. This comprises those claiming either Jobseeker's Allowance or Universal Credit (under the Searching for Work conditionality) along with estimates of additional claimants who would have been searching for work under Universal Credit had it existed over the entire period since 2013.
2. The Alternative Claimant Count rates are calculated as a proportion of the resident population, aged 16-64, based on the Mid-year population estimates for 2019.

Table 7.1: HMRC RTI data, Scotland and UK, June 2015 - June 2021 (Experimental data)

Scotland	June 2015	June 2016	June 2017	June 2018	June 2019	June 2020	June 2021
Total employees (000s)	2,339	2,349	2,364	2,371	2,383	2,330	2,350
<i>Annual Growth (%)</i>		0.4	0.6	0.3	0.5	-2.2	0.9
Aggregate pay per month (£million)	4,975	5,019	5,170	5,306	5,543	5,348	5,788
<i>Annual Growth (%)</i>		0.9	3.0	2.6	4.5	-3.5	8.2
Median monthly pay (£ per month)	1,654	1,688	1,724	1,772	1,844	1,863	2,017
<i>Annual Growth (%)</i>		2.1	2.1	2.8	4.1	1.0	8.3
Mean monthly pay (£ per month)	2,127	2,137	2,187	2,238	2,326	2,296	2,463
<i>Annual Growth (%)</i>		0.5	2.3	2.3	3.9	-1.3	7.3
UK	June 2015	June 2016	June 2017	June 2018	June 2019	June 2020	June 2021
Total employees (000s)	27,460	27,909	28,272	28,567	28,879	28,313	28,678
<i>Annual Growth (%)</i>		1.6	1.3	1.0	1.1	-2.0	1.3
Aggregate pay per month (£million)	61,005	63,314	65,931	69,144	71,759	70,383	77,599
<i>Annual Growth (%)</i>		3.8	4.1	4.9	3.8	-1.9	10.3
Median monthly pay (£ per month)	1,616	1,653	1,693	1,754	1,810	1,828	1,978
<i>Annual Growth (%)</i>		2.3	2.4	3.6	3.2	1.0	8.2
Mean monthly pay (£ per month)	2,222	2,269	2,332	2,420	2,485	2,486	2,706
<i>Annual Growth (%)</i>		2.1	2.8	3.8	2.7	0.0	8.8

Source: PAYE real-time information, Seasonally adjusted (HMRC)

Chart 7.1: Median gross monthly pay, Scotland and UK, June 2015 - July 2021 (Experimental Statistics)
seasonally adjusted



Source: PAYE real-time information (HMRC)

*flash estimates are for July 2021 and are based on around 85% of required information being available and may be subject to revision.

Charts 7.2 and 7.3: Payrolled employees and median monthly pay by region - annual change, June 2020 to June 2021 (Experimental data)
seasonally adjusted

Chart 7.2: Total payrolled employees by Government Office Region - % change on year
seasonally adjusted

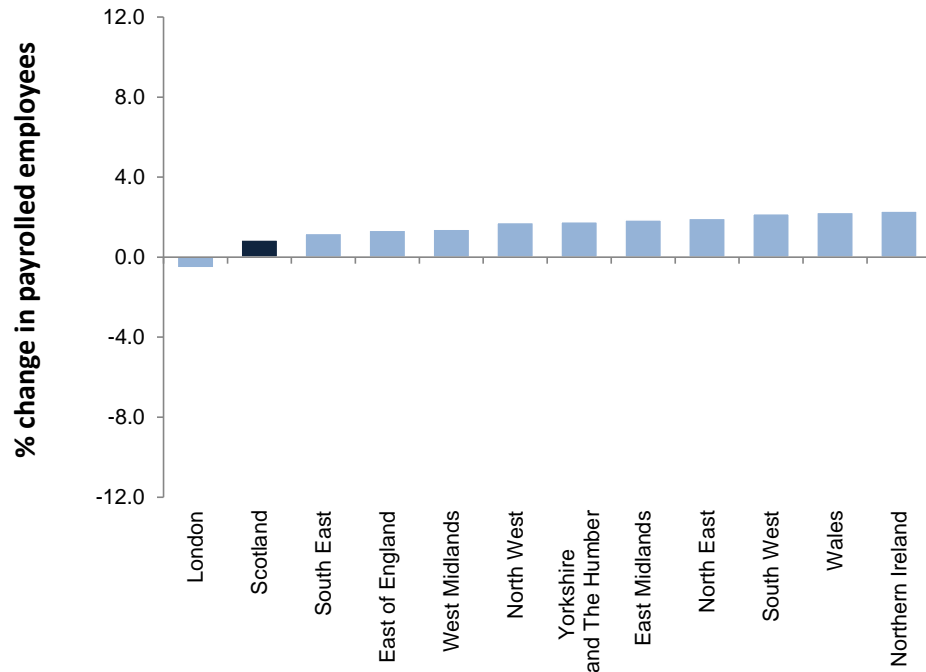
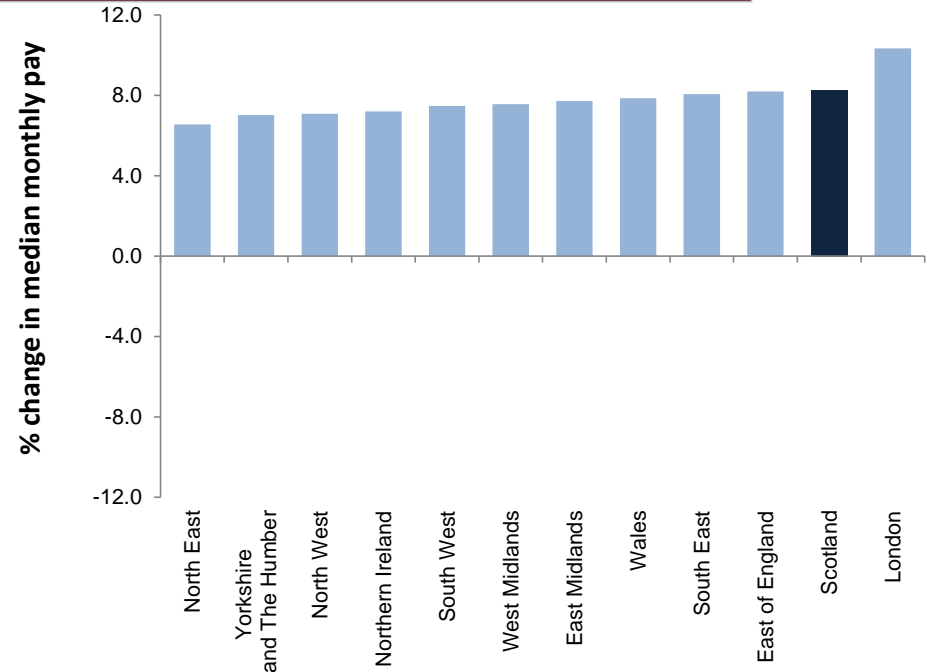


Chart 7.3: Median monthly pay by Government Office Region - % change on year
seasonally adjusted



Source: PAYE real-time information (HMRC)

Charts 7.4 and 7.5: Payrolled employees and median monthly pay (NUTS2) - annual change, June 2020 to June 2021 (Experimental data)
seasonally adjusted

Chart 7.4: Total payrolled employees by NUTS2 region - % change on year
seasonally adjusted

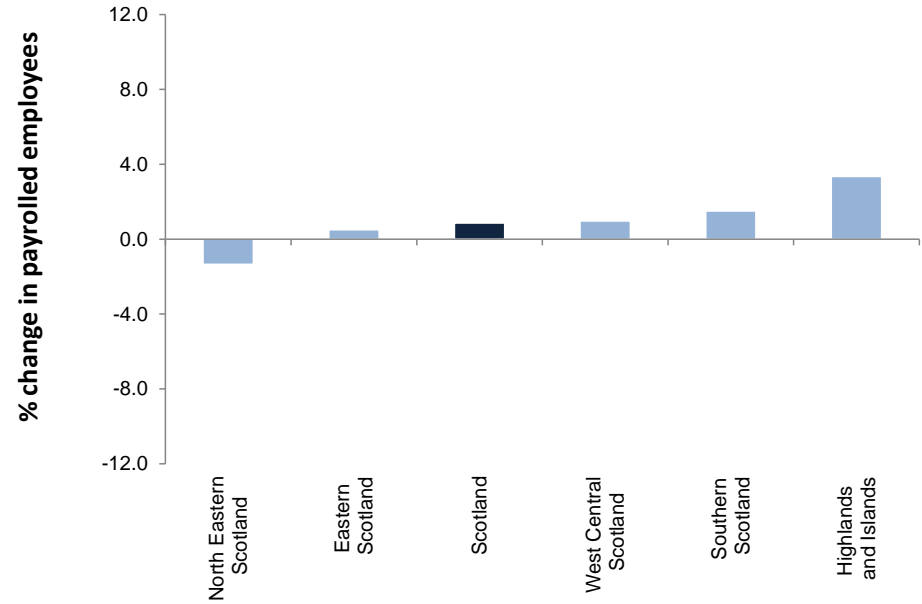
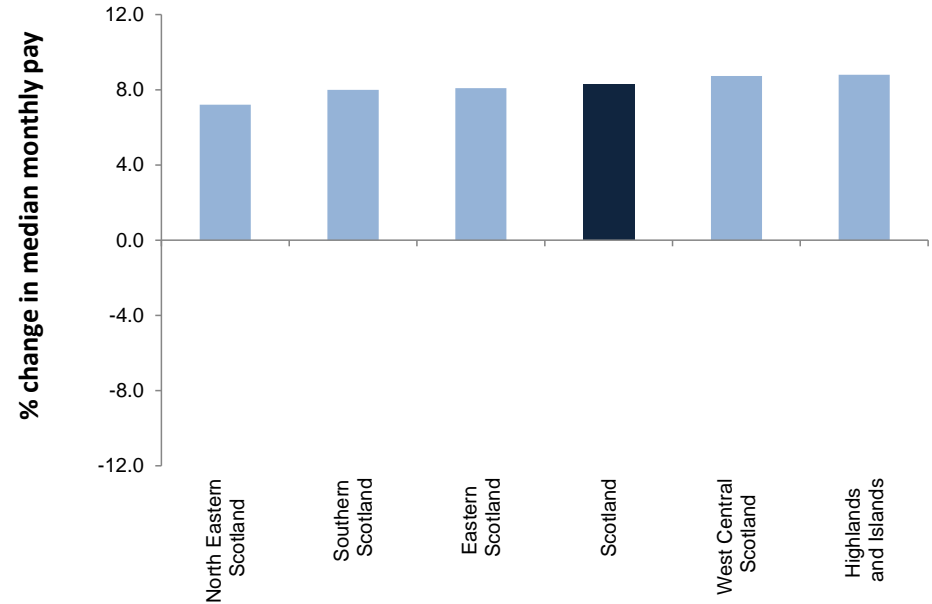


Chart 7.5: Median monthly pay by NUTS2 region - % change on year
seasonally adjusted



Source: PAYE real-time information (HMRC)

Table 7.2: HMRC RTI data (NUTS2 and NUTS3 areas), June 2021 (Experimental data)

	Payrolled employees			Median monthly pay		
	Level (000s)	% change on year		£ per month	% change on year	
Scotland	2,350	0.9	↑	2,017	8.3	↑
North Eastern Scotland	220	-1.3	↓	2,142	7.2	↑
Aberdeen City and Aberdeenshire	220	-1.3	↓	2,128	7.2	↑
Highlands and Islands	200	3.3	↑	1,930	8.8	↑
Caithness and Sutherland and Ross and Cromarty	38	3.1	↑	1,922	9.0	↑
Inverness and Nairn and Moray, Badenoch and Strathspey	90	2.3	↑	1,936	9.0	↑
Lochaber, Skye and Lochalsh, Arran and Cumbrae and Argyll and Bute	40	5.7	↑	1,840	9.5	↑
Na h-Eileanan Siar	11	4.0	↑	1,984	7.7	↑
Orkney Islands	10	5.0	↑	1,836	5.3	↑
Shetland Islands	11	2.6	↑	2,183	6.5	↑
Eastern Scotland	869	0.5	↑	2,032	8.1	↑
Angus and Dundee City	109	0.4	↑	1,892	7.0	↑
City of Edinburgh	232	-0.1	↓	2,149	9.1	↑
Clackmannanshire and Fife	177	0.9	↑	1,969	6.9	↑
East Lothian and Midlothian	91	1.2	↑	2,017	8.4	↑
Falkirk	73	0.1	↑	2,066	8.2	↑
Perth and Kinross and Stirling	102	0.9	↑	1,997	9.6	↑
West Lothian	85	0.7	↑	2,050	6.8	↑
West Central Scotland	665	1.0	↑	2,017	8.7	↑
East Dunbartonshire, West Dunbartonshire and Helensburgh and Lomond	97	0.9	↑	2,121	7.9	↑
Glasgow City	257	1.2	↑	1,952	9.6	↑
Inverclyde, East Renfrewshire and Renfrewshire	156	0.9	↑	2,068	9.0	↑
North Lanarkshire	155	0.8	↑	2,034	8.1	↑
Southern Scotland	396	1.5	↑	1,958	8.0	↑
Dumfries and Galloway	58	2.4	↑	1,839	7.5	↑
East Ayrshire and North Ayrshire mainland	102	1.2	↑	1,940	8.1	↑
Scottish Borders	47	2.3	↑	1,853	7.7	↑
South Ayrshire	44	1.1	↑	1,939	8.7	↑
South Lanarkshire	146	1.2	↑	2,051	8.1	↑

Source: PAYE real-time information, Seasonally adjusted (HMRC)

Notes on the LFS/APS estimates [Sections 1 - 4]

IMPORTANT NOTE: Labour Force Survey (LFS) estimates from Jan-Mar 2020 to Feb-Apr 2021 were reweighted in July 2021 to new populations derived using growth rates from HM Revenue and Customs (HMRC) Real Time Information (RTI) to allow for different trends during the COVID-19 pandemic. Annual Population Survey responses for periods from April 2019 - March 2020 onwards have now been reweighted by the same method. The reweighting will give improved estimates of both rates and levels estimated from these surveys.

An ONS article explaining the reasons for the change in methodology can be found at:

<https://www.ons.gov.uk/employmentandlabourmarket/peopleinwork/employmentandemployeetypes/methodologies/labourforcesurveyweightingmethodology>

Measures of disability [Tables 3.1a and 3.1b]

In the April-June 2013 dataset, and subsequent datasets, questions used to derive current disability status of a person were changed. Estimates are now based on the core definition of disability under the Equality Act 2010, as specified in the Government Statistical Service (GSS) Harmonised Standards for Questions on disability.

- The definition includes people with a health condition or illness lasting 12 months or more that reduces their ability to carry out day-to-day activities.
- The definition excludes certain non-core groups covered by the Equality Act, such as those with progressive or past conditions that do not currently limit their activities, and conditions that only limit their activities without medication or treatment.
- Respondents are now asked to take into account any medication that they are currently taking when previously they were asked to consider their day-to-day activities without the use of medication.

The introduction of this new definition has created a discontinuity in the series and estimates are not directly comparable with earlier periods

Claimant Count [Section 5]

The Claimant Count is not a measure of unemployment and changes in the Claimant Count will not be wholly because of changes in the number of people who are unemployed. It is a measure of the number of people claiming benefit principally for the reason of being unemployed:

- between January 1971 (when comparable estimates start) and September 1996, it is an estimate of the number of people who would have claimed unemployment-related benefits if Jobseeker's Allowance had existed at that time.
- between October 1996 and April 2013, the Claimant Count is a count of the number of people claiming Jobseeker's Allowance (JSA).
- between May 2013 and October 2013, the Claimant Count includes all claimants of Universal Credit (including those who were in work) as well as all JSA claimants
- from November 2013, the Claimant Count includes all out of work Universal Credit claimants as well as all JSA claimants .
- From April 2015 onwards the claimant count includes those claimants of Universal Credit who are required to search for work, i.e. within the Searching for Work conditionality regime as defined by the Department for Work & Pensions as well as all JSA claimants

Information for July 2021 is for the number of claimants as at 8 July 2021.

Alternative Claimant Count [Section 6]

The Alternative Claimant Count measures the number of people claiming unemployment-related benefits. Previously, the Claimant Count was simply the number of people claiming Jobseeker's Allowance.

- Since the introduction of Universal Credit in April 2013, Universal Credit claimants who meet the 'Searching for Work' conditionality have been added to overall Claimant Count figures. By bringing more people within the coverage of the Claimant Count, total numbers may rise irrespective of economic performance.
- ONS has withdrawn Claimant Count data from Labour Market Statistics bulletins, stating that it was no longer a reliable economic indicator and could be a misleading representation of changes in the labour market. The Alternative Claimant Count is intended to provide a consistent claimant unemployment series and thus a better indicator of local labour market change over time.
- The new Alternative Claimant Count is not directly comparable to the Claimant Count figures previously published.

Statistics for this new measure are published quarterly by the Department for Work and Pensions (DWP). They are available by calendar month at national and local authority level and can be broken down by gender, age group and type of benefit claimed. Tables 6.1 to 6.5 show experimental Alternative Claimant Count data published by DWP and are updated quarterly. The most recent data was published on 15 July 2021. Further information on this measure can be found at the following link:

<https://www.gov.uk/government/statistics/alternative-claimant-count-statistics-january-2013-to-may-2021>

Further information

Further Labour Market information can be obtained from the following sites/sources.

Scottish Government Labour Market Statistics:

Further commentary and charts are published in *Labour Market Trends: August 2021*

<https://www.gov.scot/publications/labour-market-trends-august-2021/>

Scottish Government Open Data:

<https://statistics.gov.scot/home>

ONS:

Labour Market Statistics Theme page

<http://www.ons.gov.uk/ons/taxonomy/index.html?nscl=Labour+Market>

Regional Labour Market Statistics

<https://www.ons.gov.uk/employmentandlabourmarket/peopleinwork/employmentandemployeetypes/bulletins/regionallabourmarket/previousReleases>

HMRC:

Earnings and employment statistics from Pay As You Earn (PAYE) Real Time Information

<https://www.gov.uk/government/statistics/uk-real-time-information-experimental-statistics>

NOMIS:

Online database for official labour market statistics

<https://www.nomisweb.co.uk/default.asp>

Contact details

Telephone: 0131 244 6773

email: LMStats@gov.scot