

# Scotland's Labour Market - Monthly Briefing – May 2022

Scottish Government: Office of the Chief Economic Adviser



Scottish Government  
Riaghaltas na h-Alba  
gov.scot

This document contains up-to-date statistical information concerning the labour market in Scotland from a range of official sources.

This document is part of a collection:

<https://www.gov.scot/collections/labour-market-statistics/>

HEADLINE ESTIMATES  
gender  
age

YOUNG PEOPLE (16-24)  
gender  
UK regions

LABOUR MARKET  
disability  
minority ethnic  
underemployment  
qualifications

UNEMPLOYMENT  
duration  
model-based

CLAIMANT COUNT  
all ages  
young people (16-24)  
local authorities

HMRC PAYE DATA  
payrolled employees  
median annual pay  
mean annual pay  
aggregate pay

*new  
data*

## 1. HEADLINE MEASURES

*Headline data*

*gender*

*age*

- y Table 1.1: Estimates of employment and unemployment by UK country, Jan-Mar 2022
- y Charts 1.1 and 1.2: Employment and unemployment rate trends for Scotland and UK, Jan-Mar 2022
- y Charts 1.3 and 1.4: Employment rate (16-64) by UK country, Jan-Mar 2022 - change on quarter and year
- y Charts 1.5 and 1.6: Unemployment rate (16+) by UK country, Jan-Mar 2022 - change on quarter and year
- y Table 1.2: Estimates of economic activity and inactivity by UK country, Jan-Mar 2022
- y Tables 1.3 and 1.4: Unemployment and Employment by Government Office Region, Jan-Mar 2022
- y Charts 1.7 and 1.8: Employment rate (16-64) for Government Office Regions, Jan-Mar 2022 - change on quarter and year
- y Charts 1.9 and 1.10: Unemployment rate (16+) for Government Office Regions, Jan-Mar 2022 - change on quarter and year
- y Table 1.5: Employment, ILO unemployment and inactivity rates by sex, Jan-Mar 2022
- y Chart 1.11: Employment rate by sex (16-64), Scotland and UK, 1997-2022
- y Chart 1.12: Unemployment rate by sex (16+), Scotland and UK, 1997-2022
- y Chart 1.13: Inactivity rate by sex (16-64), Scotland, UK 1997-2022
- y Table 1.6 : Employment, ILO Unemployment and Inactivity by age group, Scotland and UK

## 2: YOUNG PEOPLE (16-24 YEARS )

*Headline data*

*gender*

- y Table 2.1: Employment, Unemployment and Inactivity for the 16-24 age group, Scotland and UK
- y Charts 2.1 and 2.2: Employment and unemployment for the 16-24 age group, Scotland and UK (APS)
- y Table 2.2: Employment, ILO unemployment and inactivity for the 16-24 age group by sex, Scotland and UK (APS), Jan 2021 - Dec 2021
- y Charts 2.3 and 2.4: Employment and unemployment for the 16-24 age group by sex, Scotland (APS)

## 3: LABOUR MARKET

*disability*

*ethnicity*

*self-employed, full-time part-time*

*underemployment*

*qualifications*

- y Table 3.1: Employment rates and levels of the population aged 16-64 by disability status, Scotland (LFS and APS), 2014-2021
- y Table 3.2: Employment rates and levels of the population aged 16-64 by ethnicity and sex, Scotland, 2011 - 2021
- y Table 3.3: Employment patterns, Scotland, Jan-Mar 2022
- y Table 3.4: Underemployment, Scotland and UK, 2011-2021
- y Table 3.5: Employment rates by highest qualification held and sex, Scotland and UK, Jan 2021 - Dec 2021

# Scotland's Labour Market - Monthly Briefing – May 2022

Scottish Government: Office of the Chief Economic Adviser



Scottish Government  
Riaghaltas na h-Alba  
gov.scot

This document contains up-to-date statistical information concerning the labour market in Scotland from a range of official sources.

This document is part of a collection:

<https://www.gov.scot/collections/labour-market-statistics/>

HEADLINE ESTIMATES  
gender  
age

YOUNG PEOPLE (16-24)  
gender  
UK regions

LABOUR MARKET  
disability  
minority ethnic  
underemployment  
qualifications

UNEMPLOYMENT  
duration  
model-based

CLAIMANT COUNT  
all ages  
young people (16-24)  
local authorities

HMRC PAYE DATA  
payrolled employees  
median annual pay  
mean annual pay  
aggregate pay

*new  
data*

<p>4: UNEMPLOYMENT</p> <p><i>by duration model-based by age</i></p>	<p>Table 4.1: Unemployment by duration, Annual Population Survey, Jan 2021 - Dec 2021</p> <p>y Table 4.2: Model Based Unemployment levels and rates by Local Authority</p> <p>y Chart 4.1: ILO unemployment levels by age-group (16-64), Scotland</p>
<p>5: CLAIMANT COUNT</p> <p><i>16+ years</i></p> <p><i>16-24 years</i></p>	<p><b>EXPERIMENTAL STATISTICS</b></p> <p>y Chart 5.1: Unemployment, Alternative Claimant Count and Claimant Count levels, Scotland, January 2013 - April 2022</p> <p>y Table 5.1: Claimant Count data for April 2022 - (Experimental Data)</p> <p>y Table 5.2: Claimant Count by local authority (Experimental data)</p> <p>y Chart 5.2: Change in Claimant Count rate by local authority, April 2021 to April 2022 (Experimental data)</p> <p>y Tables 5.3 and 5.4: 16-24 Claimant Count levels and rates, Scotland and UK (Experimental data)</p> <p>y Table 5.5: 16-24 Claimant Count levels and rates by Local Authority, April 2022 (Experimental data)</p>
<p>6: HMRC REAL TIME PAYE DATA</p> <p><i>Scotland and UK</i></p> <p><i>by region</i></p> <p><i>by age</i></p> <p><i>by industry</i></p>	<p><b>EXPERIMENTAL STATISTICS</b></p> <p>y Table 6.1: HMRC RTI data, Scotland and UK, March 2016 - March 2022 (Experimental data)</p> <p>y Chart 6.1: Median monthly pay, Scotland and UK, March 2016 - April 2022 (Experimental data)</p> <p>y Charts 6.2 and 6.3: Payrolled employees and median monthly pay by region - change since pre-pandemic, February 2020 to April 2022 (Experimental data)</p> <p>y Charts 6.4 and 6.5: Payrolled employees and median monthly pay (NUTS2) - change since pre-pandemic, February 2020 to April 2022 (Experimental data)</p> <p>y Table 6.2: HMRC RTI data (NUTS2 and NUTS3 areas), April 2022 (Experimental data)</p> <p>y Charts 6.6 and 6.7: Payrolled employees and median monthly pay by age - change since pre-pandemic, February 2020 to March 2022 (Experimental data)</p> <p>y Chart 6.8: Payrolled employees by industry - change since pre-pandemic, February 2020 to April 2022 (Experimental data)</p> <p>y Chart 6.9: Median monthly pay by industry - change since pre-pandemic, February 2020 to April 2022 (Experimental data)</p>
<p>BACKGROUND INFORMATION</p> <p>Notes - 1</p> <p>Notes - 2</p>	<p>Further information on revisions in response to COVID-19 measures, Claimant Count and Measures of Disability</p> <p>Further sources and contact details</p>

**Table 1.1: Estimates of employment and unemployment by UK country, Jan-Mar 2022**  
*seasonally adjusted*

	Level ('000)								Rate					
	Level	change on Oct-Dec 2021		change on Jan-Mar 2021		change on Dec-Feb 2020 (pre-pandemic)		Rate (%)	change on Oct-Dec 2021 (%pt)		change on Jan-Mar 2021 (%pt)		change on Dec-Feb 2020 (pre-pandemic) (%pt)	
<b>Employment* (levels 16+, rates 16-64)</b>														
Scotland	2,682	36	↑	34	↑	-7	↓	75.6	1.4	↑	1.3	↑	0.2	↑
England	27,552	42	↑	342	↑	-486	↓	75.9	0.0	↔	0.9	↑	-1.1	↓
Wales	1,467	-8	↓	-11	↓	-3	↓	74.1	-0.4	↓	0.2	↑	0.1	↑
Northern Ireland	868	13	↑	23	↑	-9	↓	72.2	1.5	↑	2.0	↑	-0.3	↓
UK	32,569	83	↑	388	↑	-504	↓	75.7	0.1	↑	0.9	↑	-0.9	↓
<b>Unemployment** (16+)</b>														
Scotland	88	-24	↓	-33	↓	-17	↓	3.2	-0.9	↓	-1.2	↓	-0.6	↓
England	1,103	-89	↓	-330	↓	-78	↓	3.9	-0.3	↓	-1.2	↓	-0.2	↓
Wales	45	-2	↓	-23	↓	-10	↓	3.0	-0.1	↓	-1.4	↓	-0.7	↓
Northern Ireland	20	-3	↓	-10	↓	-2	↓	2.3	-0.4	↓	-1.2	↓	-0.2	↓
UK	1,257	-118	↓	-396	↓	-107	↓	3.7	-0.3	↓	-1.2	↓	-0.2	↓

Source: Labour Force Survey, ONS

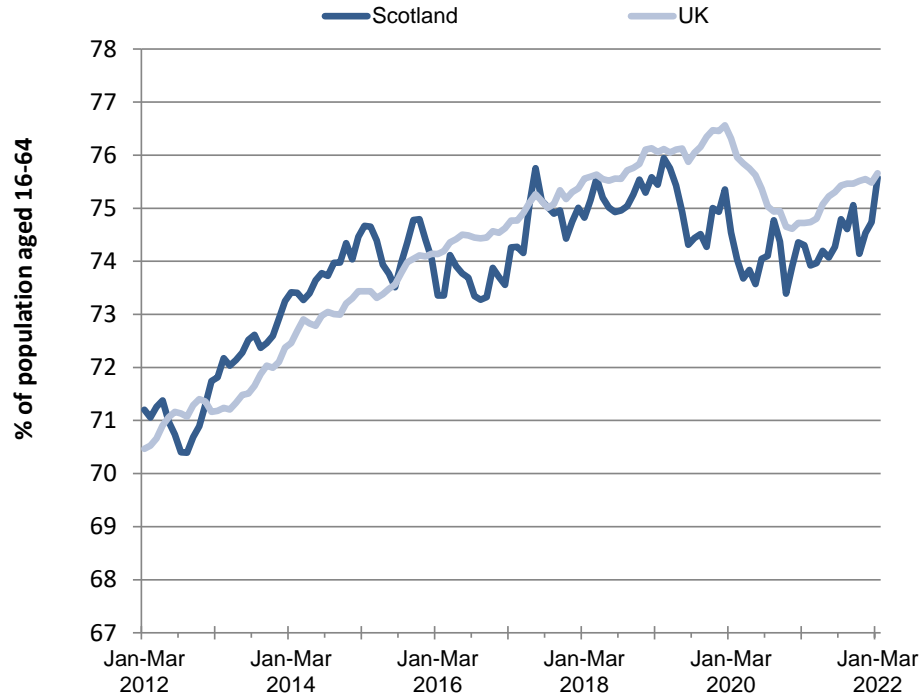
Note: \*Denominator = all persons aged 16-64 \*\*Denominator = total economically active (16+)

**IMPORTANT NOTE:** Labour Force Survey (LFS) estimates from Jan-Mar 2020 to Feb-Apr 2021 were reweighted in July 2021 to new populations derived using growth rates from HM Revenue and Customs (HMRC) Real Time Information (RTI) to allow for different trends during the COVID-19 pandemic. Annual comparisons within this table are therefore based on estimates which may differ from those previously published. For further information, see Notes (page 43).

**Charts 1.1 and 1.2: Employment and unemployment rate trends for Scotland and UK, Jan-Mar 2022**

*seasonally adjusted*

**Chart 1.1: Employment rate (16-64), Scotland and UK**  
*seasonally adjusted*



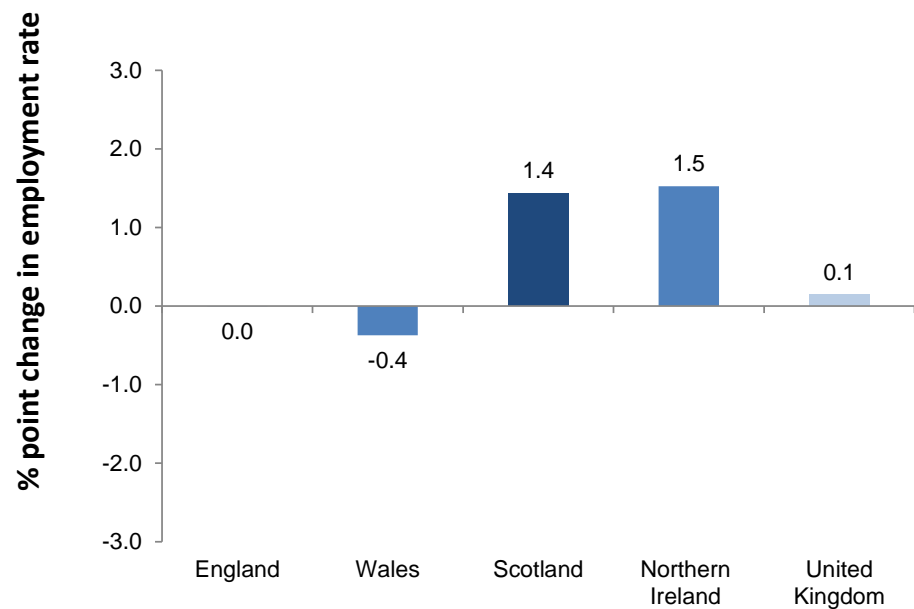
**Chart 1.2: Unemployment rate (16+), Scotland and UK**  
*seasonally adjusted*



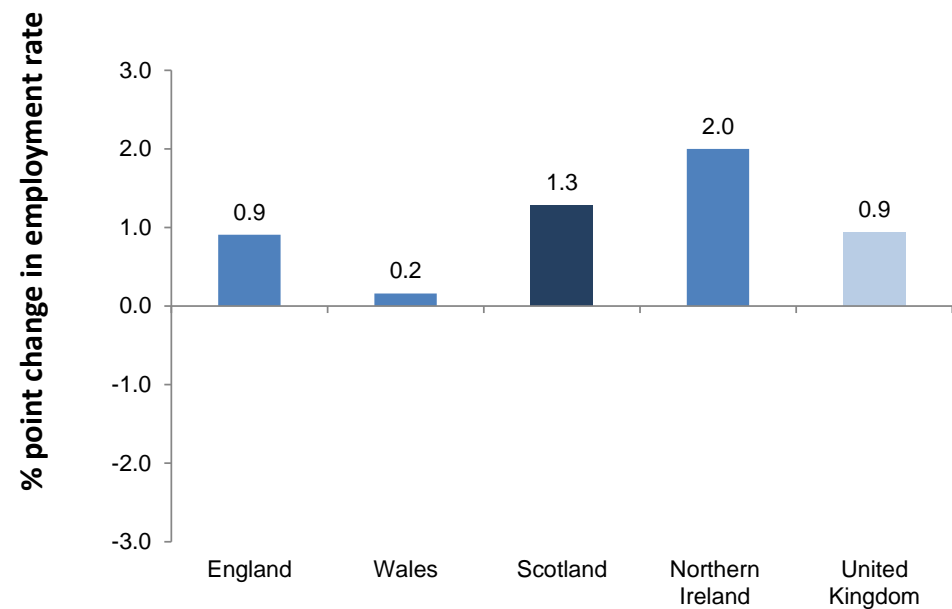
Source: Labour Force Survey, ONS

**Charts 1.3 and 1.4: Employment rate (16-64) by UK country, Jan-Mar 2022 - change on quarter and year**  
*seasonally adjusted*

**Chart 1.3: Employment rate (16-64) by UK country - change on quarter**  
*seasonally adjusted*



**Chart 1.4: Employment rate (16-64) by UK country - change on year**  
*seasonally adjusted*



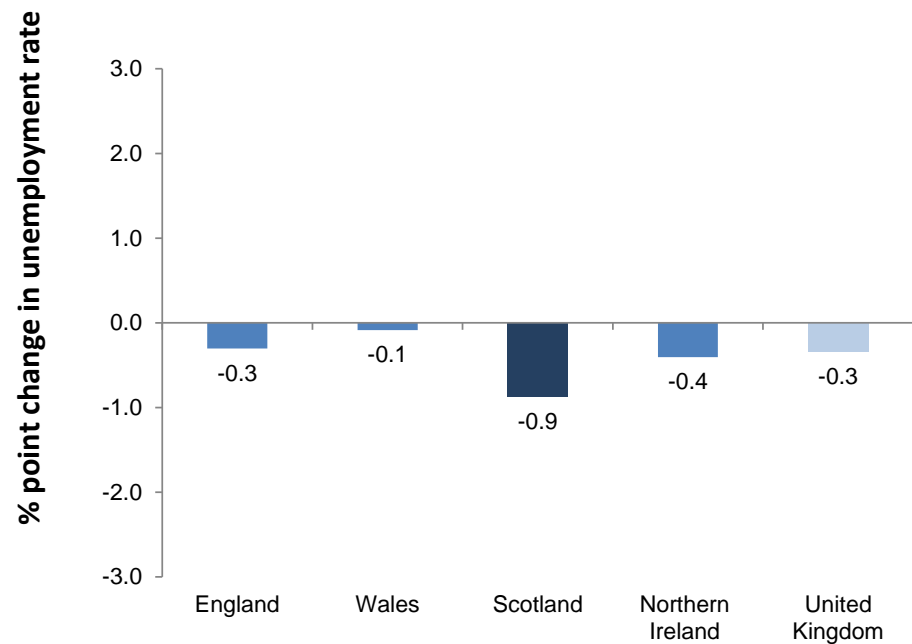
Source: Labour Force Survey, ONS

Note: Chart bars based on unrounded data. Chart labels rounded to one decimal place.

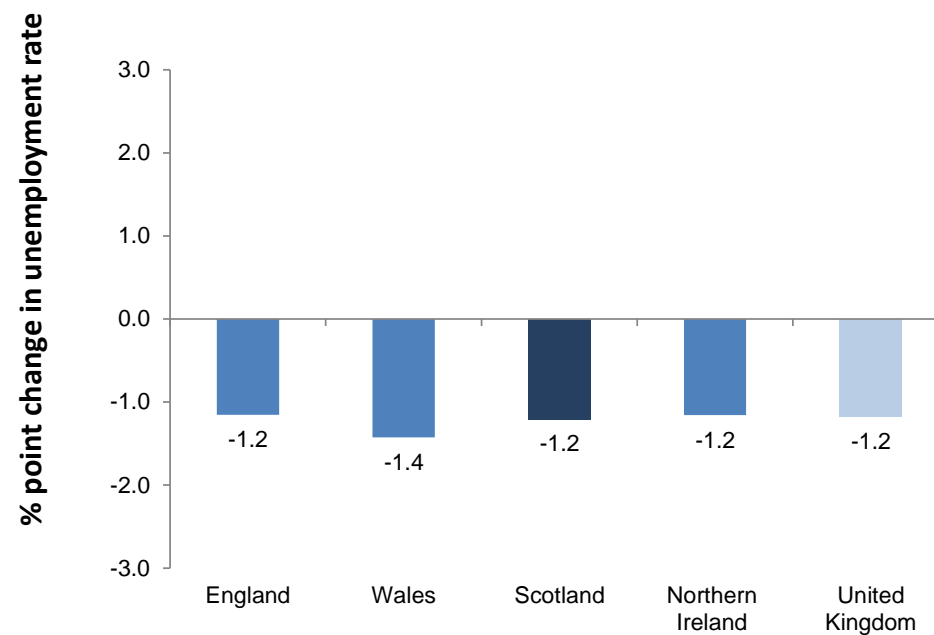
**Charts 1.5 and 1.6: Unemployment rate (16+) by UK country, Jan-Mar 2022 - change on quarter and year**

*seasonally adjusted*

**Chart 1.5: Unemployment rate (16+) by UK country - change on quarter**  
*seasonally adjusted*



**Chart 1.6: Unemployment rate (16+) by UK country - change on year**  
*seasonally adjusted*



Source: Labour Force Survey, ONS

Note: Chart bars based on unrounded data. Chart labels rounded to one decimal place.

**Table 1.2: Estimates of economic activity and inactivity by UK country, Jan-Mar 2022**

*seasonally adjusted*

	Level ('000)							Rate						
	Level	change on Oct-Dec 2021		change on Jan-Mar 2021		change on Dec-Feb 2020		Rate (%)	change on Oct-Dec 2021 (%pt)		change on Jan-Mar 2021 (%pt)		change on Dec-Feb 2020 (%pt)	
<b>Economic Activity* (levels 16+, rates 16-64)</b>														
Scotland	2,770	12	↑	0	↔	-23	↓	78.1	0.7	↑	0.3	↑	-0.2	↓
England	28,655	-47	↓	12	↑	-564	↓	79.0	-0.2	↓	0.0	↔	-1.3	↓
Wales	1,512	-10	↓	-34	↓	-13	↓	76.4	-0.5	↓	-1.0	↓	-0.5	↓
Northern Ireland	889	10	↑	13	↑	-11	↓	74.0	1.2	↑	1.2	↑	-0.4	↓
UK	33,825	-34	↓	-8	↓	-612	↓	78.6	-0.1	↓	0.0	↔	-1.1	↓
<b>Economic Inactivity* (16-64)</b>														
Scotland	749	-24	↓	-12	↓	4	↑	21.9	-0.7	↓	-0.3	↓	0.2	↑
England	7,329	93	↑	14	↑	445	↑	21.0	0.2	↑	0.0	↔	1.3	↑
Wales	448	10	↑	19	↑	7	↑	23.6	0.5	↑	1.0	↑	0.5	↑
Northern Ireland	303	-14	↓	-14	↓	4	↑	26.0	-1.2	↓	-1.2	↓	0.4	↑
UK	8,829	65	↑	6	↑	460	↑	21.4	0.1	↑	0.0	↔	1.1	↑

Source: Labour Force Survey, ONS

Note: \*Denominator = all aged 16-64

**IMPORTANT NOTE:** Labour Force Survey (LFS) estimates from Jan-Mar 2020 to Feb-Apr 2021 were reweighted in July 2021 to new populations derived using growth rates from HM Revenue and Customs (HMRC) Real Time Information (RTI) to allow for different trends during the COVID-19 pandemic. Annual comparisons within this table are therefore based on estimates which may differ from those previously published. For further information, see Notes (page 43).

**Table 1.3: Unemployment by Government Office Region (LFS), Jan-Mar 2022**  
seasonally adjusted

	Level	Level ('000)				Rate (%)	Rate			
		change on Oct-Dec 2021		change on Jan-Mar 2021			change on Oct-Dec 2021 (%pt)		change on Jan-Mar 2021 (%pt)	
North East	63	-7	↓	-11	↓	5.0	-0.6	↓	-0.8	↓
North West	153	-13	↓	-24	↓	4.3	-0.3	↓	-0.7	↓
Yorkshire and The Humber	106	5	↑	-26	↓	4.0	0.2	↑	-1.0	↓
East Midlands	64	-18	↓	-61	↓	2.7	-0.8	↓	-2.5	↓
West Midlands	138	-9	↓	-39	↓	4.6	-0.4	↓	-1.5	↓
East	107	9	↑	-19	↓	3.4	0.3	↑	-0.6	↓
London	237	-25	↓	-113	↓	4.7	-0.4	↓	-2.2	↓
South East	153	-32	↓	-13	↓	3.2	-0.7	↓	-0.3	↓
South West	82	1	↑	-25	↓	2.9	0.0	↔	-0.9	↓
Wales	45	-2	↓	-23	↓	3.0	-0.1	↓	-1.4	↓
Northern Ireland	20	-3	↓	-10	↓	2.3	-0.4	↓	-1.2	↓
<b>Scotland</b>	<b>88</b>	<b>-24</b>	<b>↓</b>	<b>-33</b>	<b>↓</b>	<b>3.2</b>	<b>-0.9</b>	<b>↓</b>	<b>-1.2</b>	<b>↓</b>
<b>United Kingdom</b>	<b>1,257</b>	<b>-118</b>	<b>↓</b>	<b>-396</b>	<b>↓</b>	<b>3.7</b>	<b>-0.3</b>	<b>↓</b>	<b>-1.2</b>	<b>↓</b>
England	1,103	-89	↓	-330	↓	3.9	-0.3	↓	-1.2	↓

Source: Labour Force Survey, ONS

**Table 1.4: Employment by UK Countries and Regions (LFS), Jan-Mar 2022**  
seasonally adjusted

	Level	Level ('000)				Rate (%)	Rate			
		change on Oct-Dec 2021		change on Jan-Mar 2021			change on Oct-Dec 2021 (%pt)		change on Jan-Mar 2021 (%pt)	
North East	1,199	13	↑	-9	↓	70.9	-0.1	↓	-1.1	↓
North West	3,384	-22	↓	9	↑	73.1	-0.6	↓	0.5	↑
Yorkshire and The Humber	2,546	3	↑	20	↑	73.1	0.3	↑	0.8	↑
East Midlands	2,341	29	↑	41	↑	76.0	0.6	↑	1.3	↑
West Midlands	2,867	45	↑	126	↑	76.1	1.0	↑	3.1	↑
East	3,089	-35	↓	18	↑	77.9	-1.2	↓	0.2	↑
London	4,776	-34	↓	62	↑	75.2	-0.7	↓	0.7	↑
South East	4,572	37	↑	-2	↓	78.3	0.7	↑	0.1	↑
South West	2,779	6	↑	77	↑	79.1	0.3	↑	2.4	↑
Wales	1,467	-8	↓	-11	↓	74.1	-0.4	↓	0.2	↑
Northern Ireland	868	13	↑	23	↑	72.2	1.5	↑	2.0	↑
<b>Scotland</b>	<b>2,682</b>	<b>36</b>	<b>↑</b>	<b>34</b>	<b>↑</b>	<b>75.6</b>	<b>1.4</b>	<b>↑</b>	<b>1.3</b>	<b>↑</b>
<b>United Kingdom</b>	<b>32,569</b>	<b>83</b>	<b>↑</b>	<b>388</b>	<b>↑</b>	<b>75.7</b>	<b>0.1</b>	<b>↑</b>	<b>0.9</b>	<b>↑</b>
England	27,552	42	↑	342	↑	75.9	0.0	↔	0.9	↑

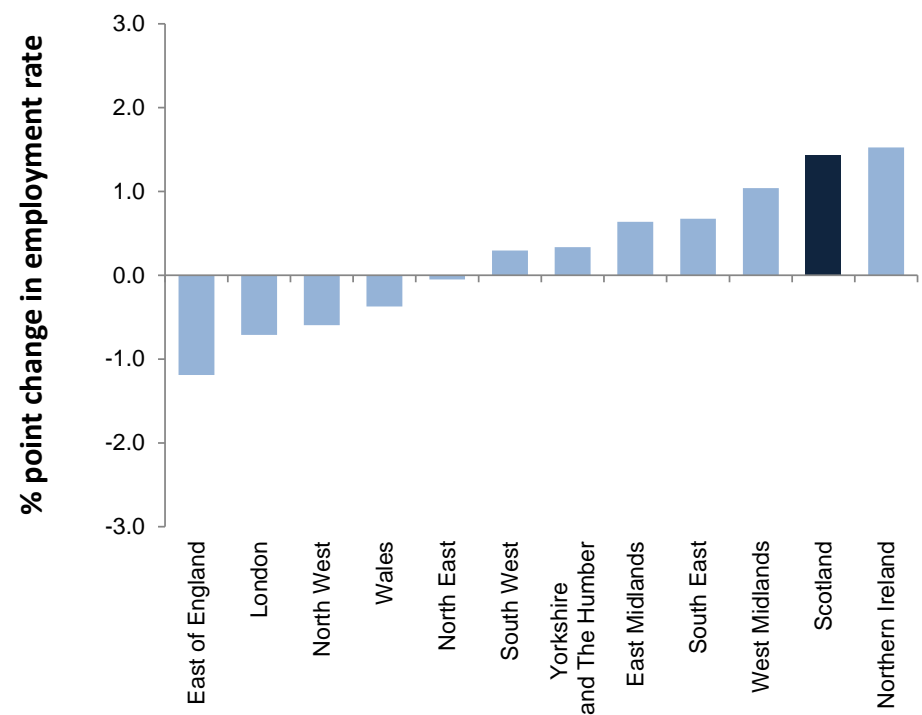
Source: Labour Force Survey, ONS

**IMPORTANT NOTE:** Labour Force Survey (LFS) estimates from Jan-Mar 2020 to Feb-Apr 2021 were reweighted in July 2021 to new populations derived using growth rates from HM Revenue and Customs (HMRC) Real Time Information (RTI) to allow for different trends during the COVID-19 pandemic. Annual comparisons within this table are therefore based on estimates which may differ from those previously published. For further information, see Notes (page 43).

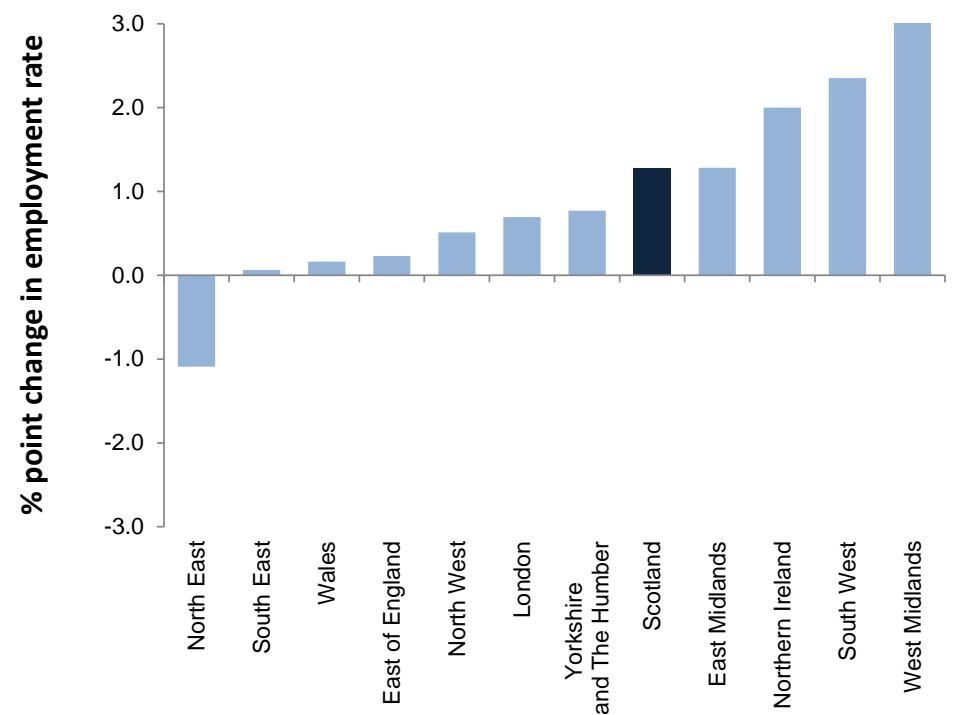


**Charts 1.7 and 1.8: Employment rate (16-64) for Government Office Regions, Jan-Mar 2022 - change on quarter and year**  
*seasonally adjusted*

**Chart 1.7: Employment rate (16-64) by Government Office Region - change on quarter**  
*seasonally adjusted*



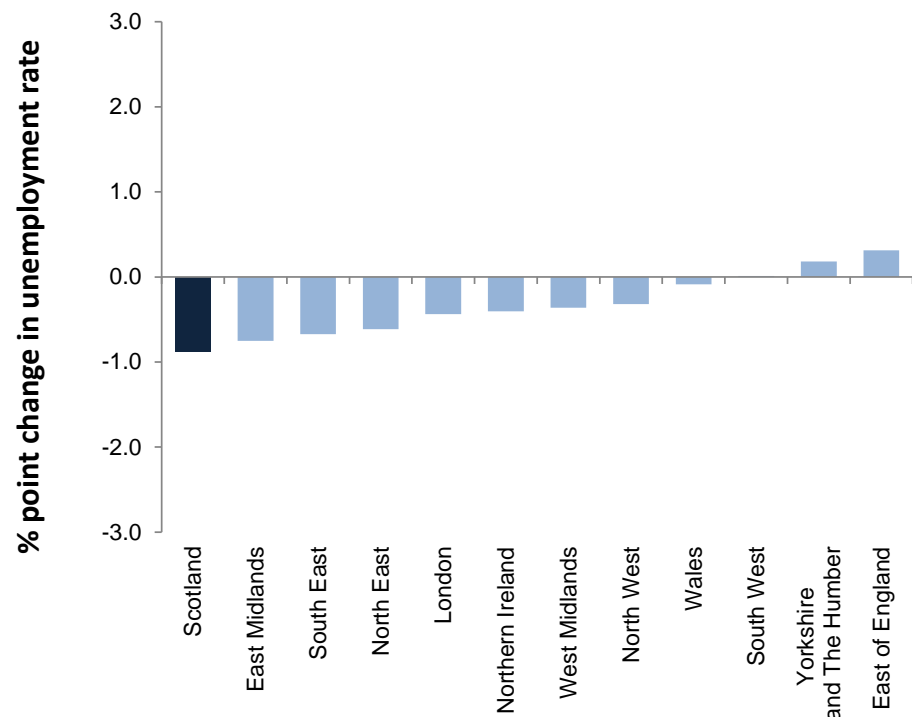
**Chart 1.8: Employment rate (16-64) by Government Office Region - change on year**  
*seasonally adjusted*



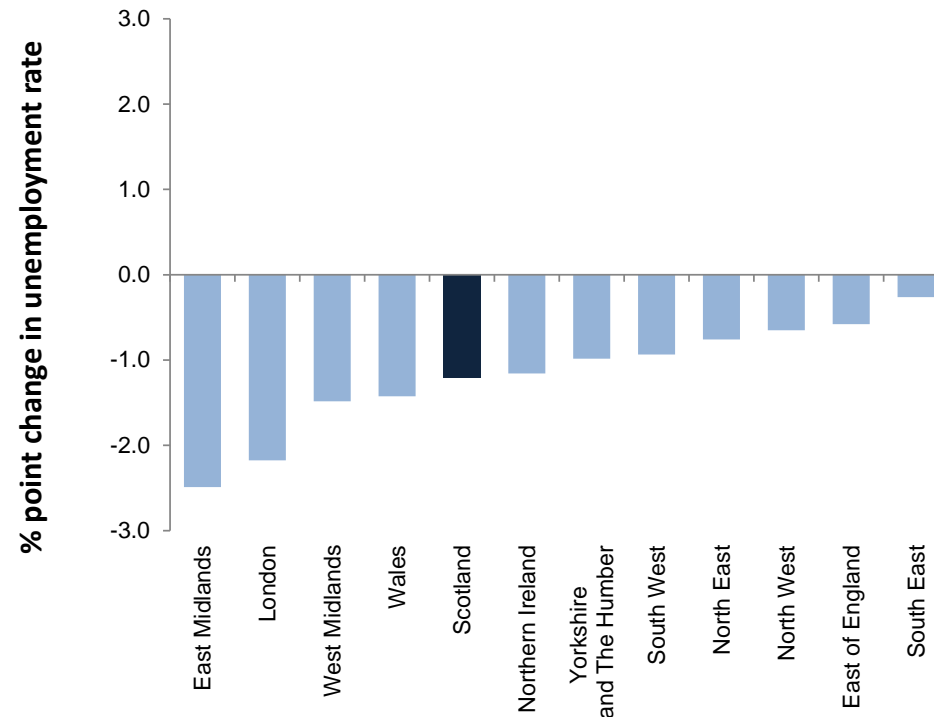
Source: Labour Force Survey, ONS

**Charts 1.9 and 1.10: Unemployment rate (16+) for Government Office Regions, Jan-Mar 2022 - change on quarter and year**  
*seasonally adjusted*

**Chart 1.9: Unemployment rate (16+) by Government Office Region - change on quarter**  
*seasonally adjusted*



**Chart 1.10: Unemployment rate (16+) by Government Office Region - change on year**  
*seasonally adjusted*



Source: Labour Force Survey, ONS

**Table 1.5: Employment, ILO unemployment and inactivity rates by sex, Jan-Mar 2022**  
*seasonally adjusted*

	Gender	Scotland				UK			
		Rate (%)	change on Oct-Dec 2021 %pt	change on Jan-Mar 2021 %pt	Rate (%)	change on Oct-Dec 2021 %pt	change on Jan-Mar 2021 %pt		
Employment Rate*	People	75.6	1.4 ↑	1.3 ↑	75.7	0.1 ↑	0.9 ↑		
	Men	77.0	0.8 ↑	0.3 ↑	79.0	0.2 ↑	1.2 ↑		
	Women	74.2	2.0 ↑	2.2 ↑	72.3	0.1 ↑	0.7 ↑		
Unemployment Rate**	People	3.2	-0.9 ↓	-1.2 ↓	3.7	-0.3 ↓	-1.2 ↓		
	Men	4.4	-0.1 ↓	0.0 ↔	3.9	-0.3 ↓	-1.2 ↓		
	Women	1.9	-1.7 ↓	-2.5 ↓	3.5	-0.4 ↓	-1.1 ↓		
Inactivity Rate*	People	21.9	-0.7 ↓	-0.3 ↓	21.4	0.1 ↑	0.0 ↔		
	Men	19.4	-0.7 ↓	-0.4 ↓	17.7	0.0 ↔	-0.2 ↓		
	Women	24.3	-0.7 ↓	-0.3 ↓	25.0	0.3 ↑	0.2 ↑		

Source: Labour Force Survey, ONS

Note: \* Denominator = population of aged 16-64

\*\*Denominator = Economically active population

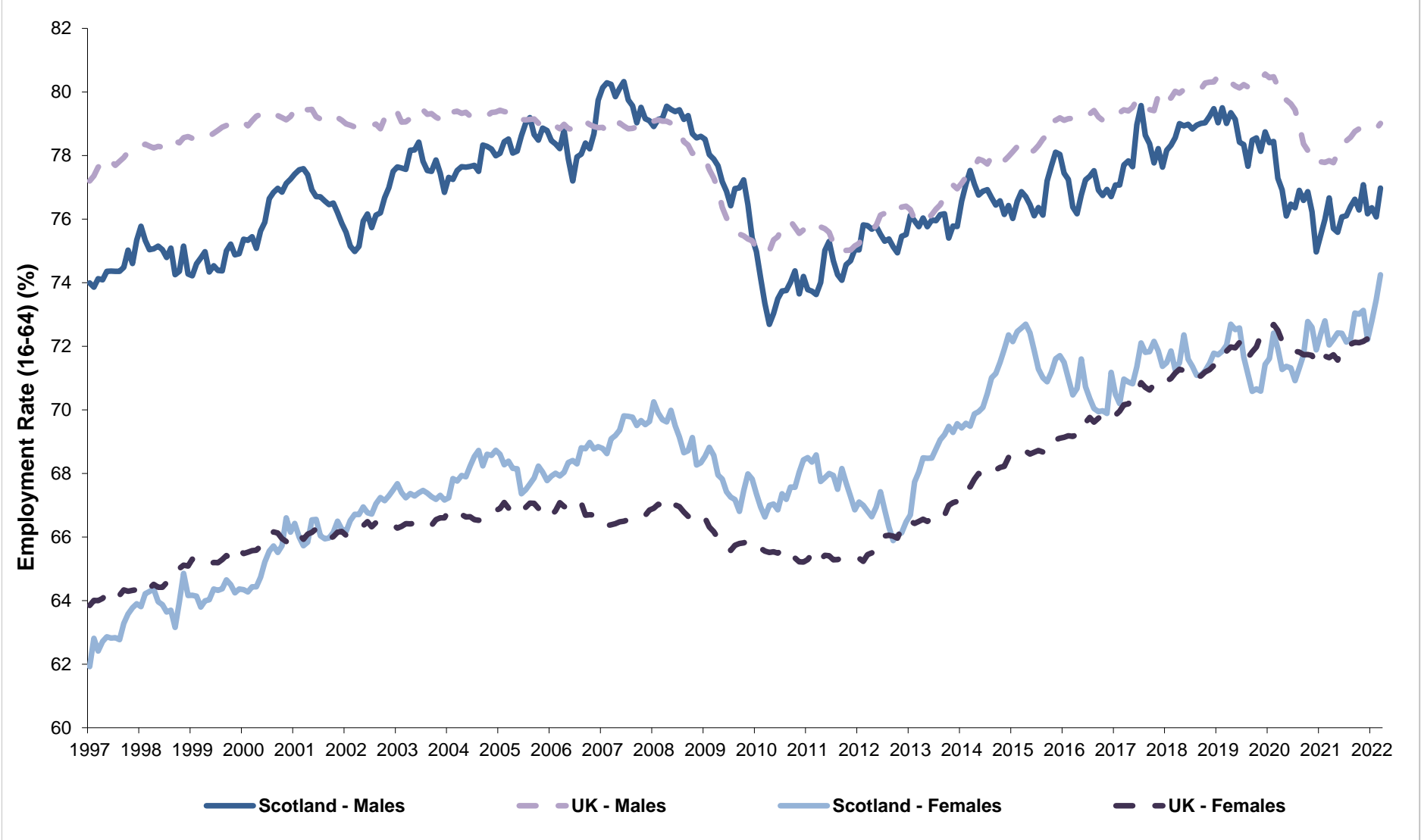
**Quality indicator**

Shaded estimates are based on a small sample size. This may result in a less precise estimates, which should be used with caution.

Unshaded estimates are based on a larger sample size. This is likely to result in estimates of higher precision, although they will still be subject to some sampling variability.

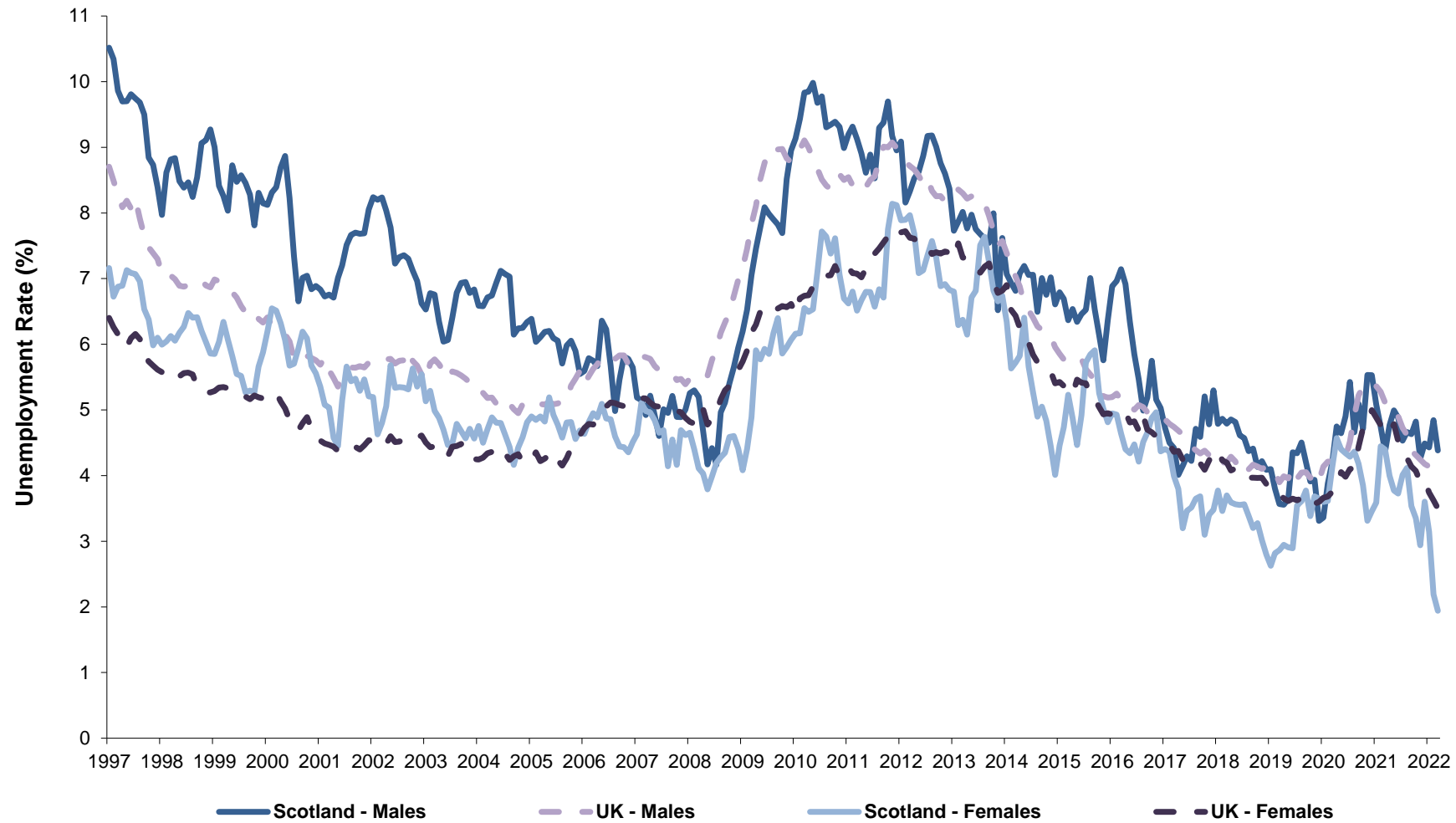
**IMPORTANT NOTE:** Labour Force Survey (LFS) estimates from Jan-Mar 2020 to Feb-Apr 2021 were reweighted in July 2021 to new populations derived using growth rates from HM Revenue and Customs (HMRC) Real Time Information (RTI) to allow for different trends during the COVID-19 pandemic. Annual comparisons within this table are therefore based on estimates which may differ from those previously published. For further information, see Notes (page 43).

**Chart 1.11: Employment rate by sex (16-64), Scotland and UK, 1997-2022**  
*seasonally adjusted*



Source: Labour Force Survey, ONS

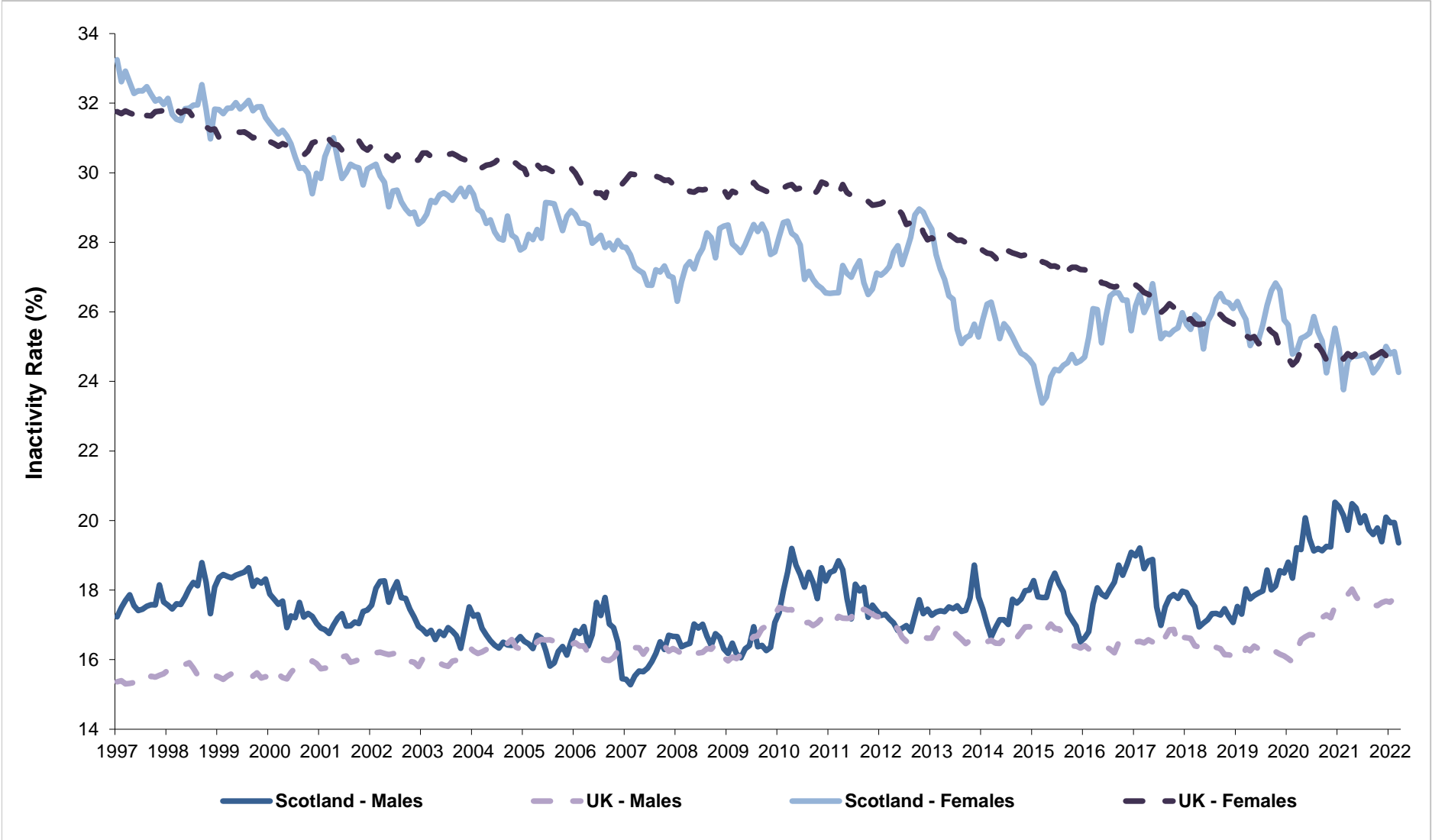
**Chart 1.12: Unemployment rate by sex (16+), Scotland and UK, 1997-2022**  
*seasonally adjusted*



Source: Labour Force Survey, ONS

Note: The unemployment rate estimate for women in Scotland in Jan-Mar 2022 is based on a small sample size. This may result in less precise estimates which should be used with caution.

**Chart 1.13: Inactivity rate by sex (16-64), Scotland, UK 1997-2022**  
*seasonally adjusted*



Source: Labour Force Survey, ONS

**Table 1.6: Employment, ILO unemployment and inactivity rates by age group, Scotland and UK, Annual Population Survey: Jan 2021 - Dec 2021**

	Age Group	Scotland					UK				
		Rate (%)	change on Jan 2020 - Dec 2020		change on Jan 2019 - Dec 2019		Rate (%)	change on Jan 2020 - Dec 2020		change on Jan 2019 - Dec 2019	
			%pt		%pt			%pt		%pt	
Employment Rate**	16-24	53.9	1.7	↑	-4.0	↓	51.3	-1.0	↓	-2.8	↓
	25-34	81.9	-1.6	↓	0.2	↑	84.0	0.0	↔	0.2	↑
	35-49	82.9	0.5	↑	-1.1	↓	85.0	0.3	↑	0.0	↔
	50-64	68.1	-1.3	↓	-2.5	↓	70.6	-1.1	↓	-1.7	↓
	65+	8.9	0.2	↑	0.2	↑	10.3	-0.4	↓	-0.5	↓
Unemployment Rate***	16-24	10.2	-3.0	↓	1.9	↑	12.6	-1.0	↓	1.2	↑
	25-34	3.0	-0.3	↓	-0.8	↓	3.8	-0.3	↓	0.2	↑
	35-49	2.5	-0.8	↓	-0.1	↓	3.1	0.0	↔	0.6	↑
	50-64	3.8	0.9	↑	1.5	↑	3.4	0.2	↑	0.7	↑
	65+	1.7	0.2	↑	0.3	↑	2.0	0.1	↑	0.4	↑
Inactivity Rate**	16-24	40.0	0.1	↑	3.1	↑	41.4	1.8	↑	2.4	↑
	25-34	15.6	1.9	↑	0.5	↑	12.7	0.3	↑	-0.5	↓
	35-49	15.0	0.1	↑	1.2	↑	12.3	-0.3	↓	-0.5	↓
	50-64	29.3	0.6	↑	1.4	↑	26.9	1.0	↑	1.2	↑
	65+	90.9	-0.2	↓	-0.3	↓	89.5	0.4	↑	0.5	↑

Source: Annual Population Survey, ONS

\* data not available

\*\* Denominator = population in age group

\*\*\* Denominator = Economically active population in age group (where economically active is defined as those in employment plus those who are unemployed)

#### Quality indicator

Shaded estimates are based on a small sample size. This may result in a less precise estimates, which should be used with caution.

Unshaded estimates are based on a larger sample size. This is likely to result in estimates of higher precision, although they will still be subject to some sampling variability.

**Note on data sources:** The Labour Force Survey (LFS) is a survey of households collected and published by the Office for National Statistics (ONS). Further information on reliability can be accessed in the ONS publication at:

<https://www.ons.gov.uk/employmentandlabourmarket/peopleinwork/employmentandemployeetypes/methodologies/measuringandreportingreliabilityoflabourforcesurveyandannualpopulationsurveyestimates>

The preferred source of labour market indicators by age band for regions/countries of the UK is the Annual Population Survey (APS).

The APS estimates are classified as National Statistics as they are based on a larger sample size, but are not as current as LFS estimates. Regional estimates for the unemployment rate maybe quite volatile, which needs to be allowed for when considering the pattern of change over time and sample sizes are also smaller for sub groups such as 16-24 year olds which can also affect volatility. Sampling variability information is published at:

<https://www.ons.gov.uk/employmentandlabourmarket/peopleinwork/employmentandemployeetypes/datasets/samplingvariabilityandrevisionssummaryofregionallabourmarketstatistics02>

**IMPORTANT NOTE:** Labour Force Survey (LFS) estimates from Jan-Mar 2020 to Feb-Apr 2021 were reweighted in July 2021 to new populations derived using growth rates from HM Revenue and Customs (HMRC) Real Time Information (RTI) to allow for different trends during the COVID-19 pandemic. Annual Population Survey (APS) responses for periods from April 2019 - March 2020 onwards were also reweighted by the same method in August 2021. Annual comparisons within this table are therefore based on estimates which may differ from those previously published. For further information, see Notes (page 43).

**Table 2.1: Employment, ILO unemployment and inactivity for the 16-24 age group, Scotland and UK, Annual Population Survey (APS): Jan 2021 - Dec 2021**

	Level	Level ('000)				Rate %	Rate			
		change on Jan 2020 - Dec 2020		change on Jan 2019 - Dec 2019			change on Jan 2020 - Dec 2020 (%pts)		change on Jan 2019 - Dec 2019 (%pts)	
<b>Employment*</b>										
Scotland	295	4	↑	-33	↓	53.9	1.7	↑	-4.0	↓
UK	3,481	-100	↓	-255	↓	51.3	-1.0	↓	-2.8	↓
<b>ILO Unemployment **</b>										
Scotland	33	-11	↓	4	↑	10.2	-3.0	↓	1.9	↑
UK	500	-62	↓	23	↑	12.6	-1.0	↓	1.2	↑
<b>Inactivity *</b>										
Scotland	219	-4	↓	10	↑	40.0	0.1	↑	3.1	↑
UK	2,809	99	↑	115	↑	41.4	1.8	↑	2.4	↑

Source: Annual Population Survey (APS), ONS

Notes: \*denominator = 16-24 population; \*\* denominator = economically active population aged 16-24

#### Quality indicator

Shaded estimates are based on a small sample size. This may result in a less precise estimates, which should be used with caution.

Unshaded estimates are based on a larger sample size. This is likely to result in estimates of higher precision, although they will still be subject to some sampling variability.

**Note on data sources:** The Labour Force Survey (LFS) is a survey of households collected and published by the Office for National Statistics (ONS). Further information on reliability can be accessed in the ONS publication at: <https://www.ons.gov.uk/employmentandlabourmarket/peopleinwork/employmentandemployeetypes/methodologies/measuringandreportingreliabilityoflabourforcesurveyandannualpopulationsurveyestimates>

The preferred source of labour market indicators by age band for regions/countries of the UK is the Annual Population Survey (APS). The APS estimates are classified as National Statistics as they are based on a larger sample size, but are not as current as LFS estimates. Regional estimates for the unemployment rate maybe quite volatile, which needs to be allowed for when considering the pattern of change over time and sample sizes are also smaller for sub groups such as 16-24 year olds which can also affect volatility. Sampling variability information is published at:

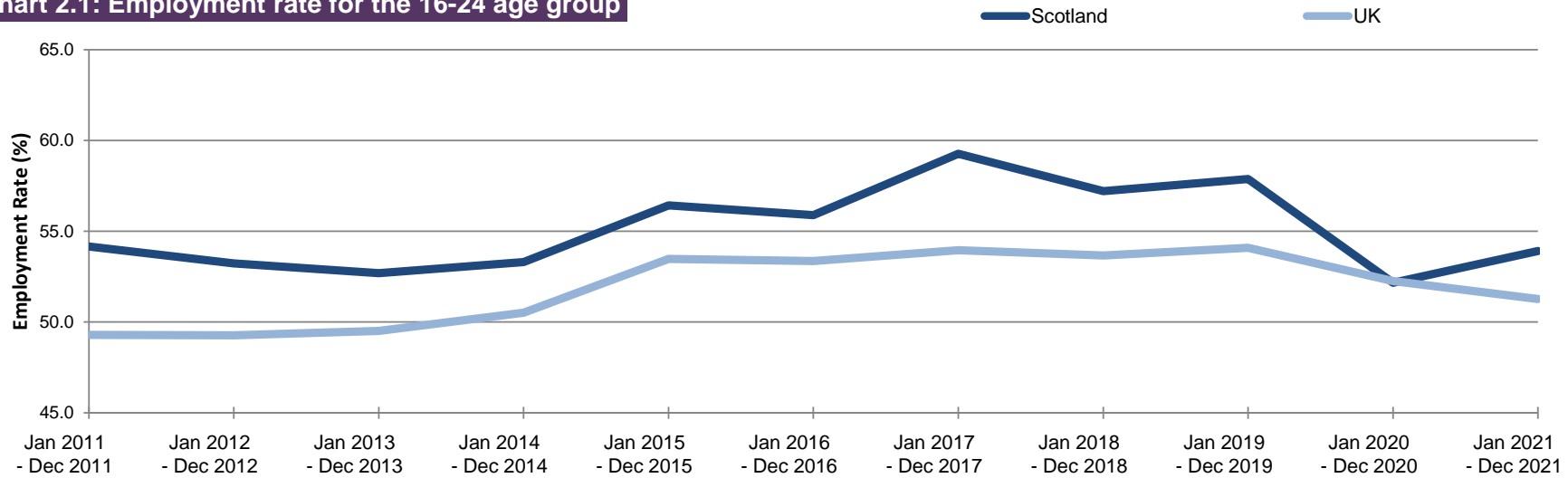
<https://www.ons.gov.uk/employmentandlabourmarket/peopleinwork/employmentandemployeetypes/datasets/samplingvariabilityandrevisi onssummaryforregionallabourmarketstatistics02>

**IMPORTANT NOTE:** Labour Force Survey (LFS) estimates from Jan-Mar 2020 to Feb-Apr 2021 were reweighted in July 2021 to new populations derived using growth rates from HM Revenue and Customs (HMRC) Real Time Information (RTI) to allow for different trends during the COVID-19 pandemic. Annual Population Survey (APS) responses for periods from April 2019 - March 2020 onwards were also reweighted by the same method in August 2021. Annual comparisons within this table are therefore based on estimates which may differ from those previously published. For further information, see Notes (page 43).

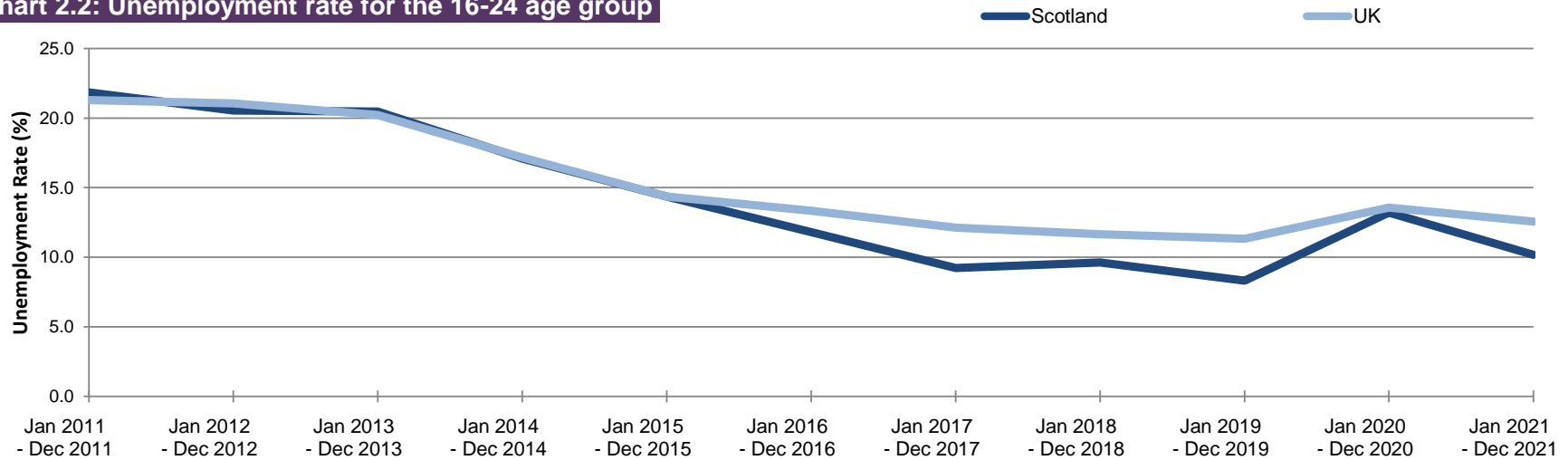


**Charts 2.1 and 2.2: Employment and unemployment for the 16-24 age group, Scotland and UK (APS)**

**Chart 2.1: Employment rate for the 16-24 age group**



**Chart 2.2: Unemployment rate for the 16-24 age group**



Source: Annual Population Survey, ONS

**Table 2.2: Employment, ILO unemployment and inactivity for the 16-24 age group by sex, Scotland and UK (APS), Jan 2021 - Dec 2021**

<b>Scotland</b>										
	Level	Level ('000)				Rate (%)	Rate			
		change on Jan 2020 - Dec 2020		change on Jan 2019 - Dec 2019			change on Jan 2020 - Dec 2020 (%pts)		change on Jan 2019 - Dec 2019 (%pts)	
<b>Employment*</b>										
Male	145	-2	↓	-18	↓	52.7	0.3	↑	-4.7	↓
Female	150	6	↑	-15	↓	55.1	3.2	↑	-3.3	↓
<b>ILO Unemployment**</b>										
Male	19	-4	↓	1	↑	11.8	-1.9	↓	1.8	↑
Female	14	-7	↓	2	↑	8.6	-4.1	↓	1.9	↑
<b>Inactivity*</b>										
Male	111	1	↑	8	↑	40.3	1.0	↑	4.0	↑
Female	108	-4	↓	2	↑	39.7	-0.8	↓	2.2	↑
<b>UK</b>										
	Level	Level ('000)				Rate (%)	Rate			
		change on Jan 2020 - Dec 2020		change on Jan 2019 - Dec 2019			change on Jan 2020 - Dec 2020 (%pts)		change on Jan 2019 - Dec 2019 (%pts)	
<b>Employment*</b>										
Male	1,760	-44	↓	-137	↓	50.8	-0.8	↓	-3.0	↓
Female	1,721	-56	↓	-118	↓	51.8	-1.2	↓	-2.7	↓
<b>ILO Unemployment**</b>										
Male	282	-31	↓	-6	↓	13.8	-1.0	↓	0.6	↑
Female	218	-31	↓	29	↑	11.3	-1.0	↓	1.9	↑
<b>Inactivity*</b>										
Male	1,425	41	↑	81	↑	41.1	1.6	↑	3.0	↑
Female	1,384	58	↑	35	↑	41.7	2.1	↑	1.7	↑

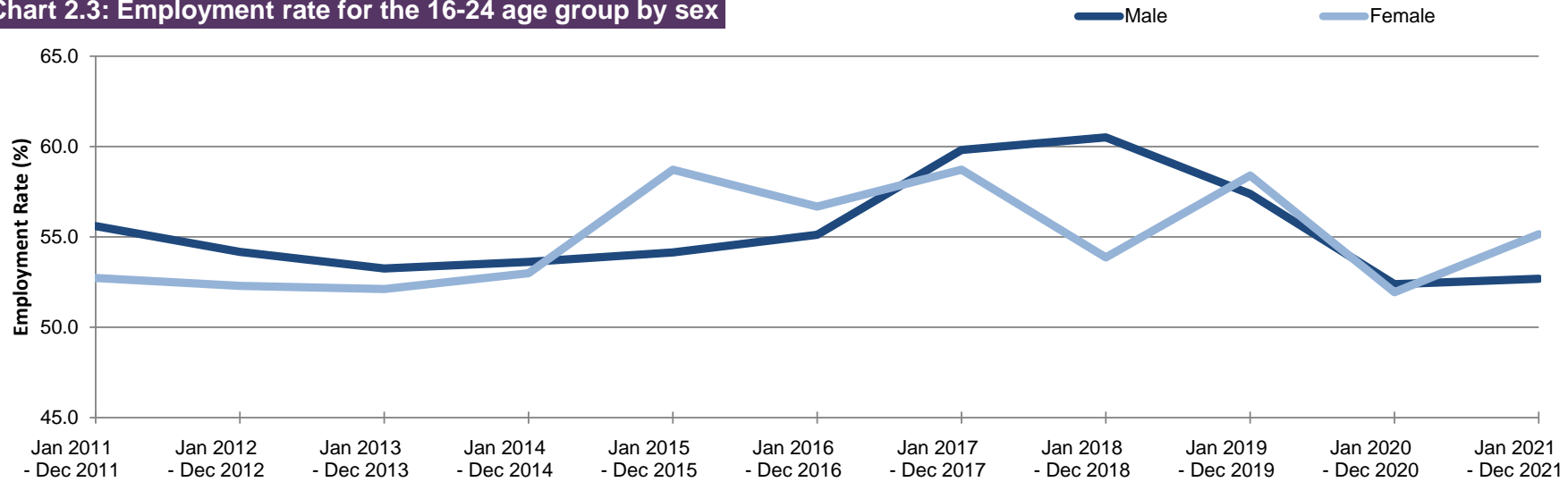
Source: Annual Population Survey, ONS

Notes: \*denominator = 16-24 population; \*\* denominator = economically active population aged 16-24

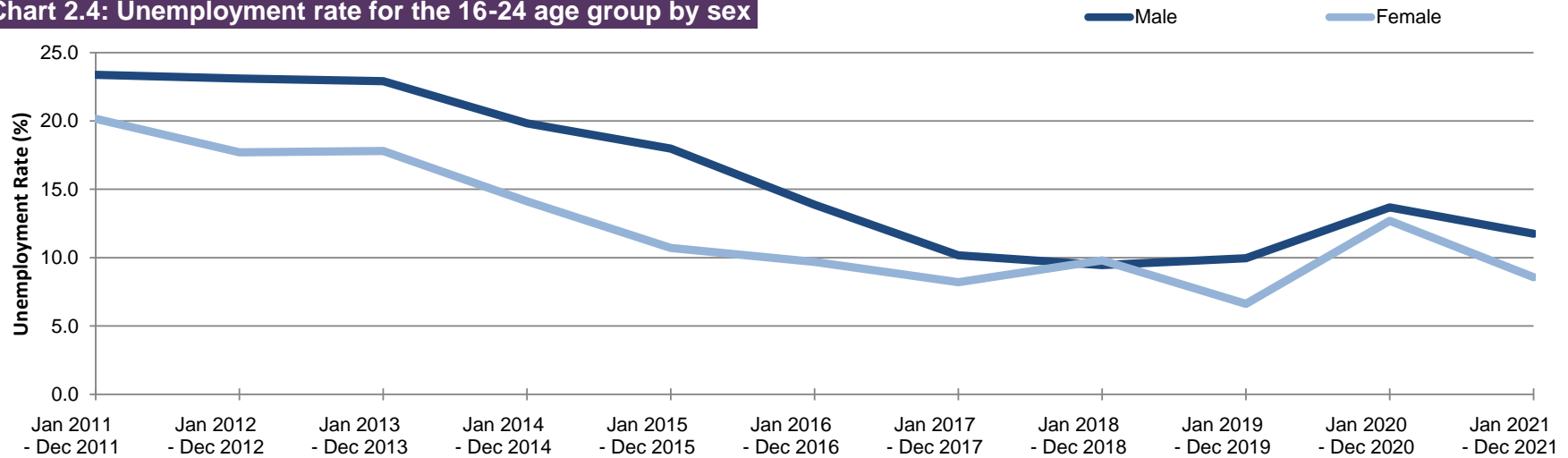
**IMPORTANT NOTE:** Annual Population Survey (APS) responses for periods from April 2019 - March 2020 onwards were reweighted in August 2021 to new populations derived using growth rates from HM Revenue and Customs (HMRC) Real Time Information (RTI) to allow for different trends during the COVID-19 pandemic. Annual comparisons within this table are therefore based on estimates which may differ from those previously published. For further information, see Notes (page 43).

**Charts 2.3 and 2.4: Employment and unemployment for the 16-24 age group by sex, Scotland (APS)**

**Chart 2.3: Employment rate for the 16-24 age group by sex**



**Chart 2.4: Unemployment rate for the 16-24 age group by sex**



Source: Annual Population Survey, ONS

**Table 3.1a: Employment rates and levels of the population aged 16-64 by disability status, Scotland 2014-2021 (APS)**

	Equality Act Disabled Employment		Not Equality Act Disabled Employment		Disabled Employment Rate Gap (%pt)
	Rate	Level (000s)	Rate	Level (000s)	
Jan 2014 - Dec 2014	41.5	251	79.4	2,213	37.9
Jan 2015 - Dec 2015	41.9	263	80.3	2,229	38.4
Jan 2016 - Dec 2016	42.8	279	80.2	2,217	37.4
Jan 2017 - Dec 2017	45.3	297	81.2	2,245	35.9
Jan 2018 - Dec 2018	45.6	307	81.1	2,231	35.5
Jan 2019 - Dec 2019	49.0	349	81.6	2,215	32.6
Jan 2020 - Dec 2020	47.2	336	80.6	2,175	33.4
Jan 2021 - Dec 2021	49.7	407	80.7	2,084	31.0
<i>change on year (% point for rate)</i>	2.5	70	0.2	-91	-2.3

Source: Annual Population Survey, ONS

**Table 3.1b: Employment rates and levels of the population aged 16-64 by disability status, Scotland 2014-2022 (LFS) not seasonally adjusted**

	Equality Act Disabled Employment		Not Equality Act Disabled Employment		Disabled Employment Rate Gap (%pt)
	Rate	Level (000s)	Rate	Level (000s)	
Jan-Mar 2014	41.9	242	79.6	2,246	37.7
Jan-Mar 2015	43.9	261	81.0	2,278	37.1
Jan-Mar 2016	42.4	261	79.9	2,236	37.5
Jan-Mar 2017	41.7	268	81.4	2,266	39.7
Jan-Mar 2018	47.2	301	81.1	2,254	33.9
Jan-Mar 2019	45.5	300	82.1	2,273	36.6
Jan-Mar 2020	47.8	351	82.0	2,201	34.2
Jan-Mar 2021	48.9	386	81.8	2,150	32.9
Jan-Mar 2022	48.8	408	84.7	2,168	35.9
<i>change on year (% point for rate)</i>	-0.1	22	2.9	18	3.0

Source: Labour Force Survey, ONS

Questions used to derive current disability status of a person were changed in the April-June 2013 dataset. Subsequent datasets are therefore not directly comparable to equivalent periods in earlier years. See Notes (page 43) for further information.

Information is shown from the Labour Force Survey (LFS) and the Annual Population Survey (APS) for the same measure. Although the LFS is more timely, the APS is based on a larger sample size and therefore has a higher degree of reliability.

**IMPORTANT NOTE:** Labour Force Survey (LFS) estimates from Jan-Mar 2020 to Feb-Apr 2021 were reweighted in July 2021 to new populations derived using growth rates from HM Revenue and Customs (HMRC) Real Time Information (RTI) to allow for different trends during the COVID-19 pandemic. Annual Population Survey (APS) responses for periods from April 2019 - March 2020 onwards were also reweighted by the same method in August 2021. Annual comparisons within this table are therefore based on estimates which may differ from those previously published. For further information, see Notes (page 43).

**Table 3.2: Employment rates and levels of the population aged 16-64 by ethnicity and sex, Scotland, 2011 - 2021**  
*not seasonally adjusted*

**All**

	White Employment		Minority Ethnic Employment		Ethnicity Employment Rate Gap (%pt)
	Rate	Level (000s)	Rate	Level (000s)	
Jan 2011 - Dec 2011	70.8	2,348	61.4	72	9.4
Jan 2012 - Dec 2012	71.0	2,332	59.0	80	12.0
Jan 2013 - Dec 2013	71.3	2,351	56.0	67	15.4
Jan 2014 - Dec 2014	73.2	2,386	60.0	90	13.2
Jan 2015 - Dec 2015	73.7	2,401	58.9	85	14.8
Jan 2016 - Dec 2016	73.8	2,401	57.5	98	16.3
Jan 2017 - Dec 2017	75.0	2,444	60.4	107	14.5
Jan 2018 - Dec 2018	75.1	2,453	55.4	97	19.7
Jan 2019 - Dec 2019	75.7	2,460	59.3	115	16.4
Jan 2020 - Dec 2020	74.0	2,413	64.2	111	9.7
Jan 2021 - Dec 2021	73.8	2,387	62.1	115	11.7
<i>change on year (% point for rate)</i>	-0.1	-27	-2.2	4	2.0

**Male**

	White Employment		Minority Ethnic Employment		Ethnicity Employment Rate Gap (%pt)
	Rate	Level (000s)	Rate	Level (000s)	
Jan 2011 - Dec 2011	74.9	1,211	72.9	45	2.1
Jan 2012 - Dec 2012	74.6	1,196	72.1	49	2.5
Jan 2013 - Dec 2013	74.8	1,202	63.8	39	11.0
Jan 2014 - Dec 2014	76.7	1,221	72.6	53	4.1
Jan 2015 - Dec 2015	76.3	1,214	73.3	51	3.0
Jan 2016 - Dec 2016	77.1	1,228	71.5	58	5.7
Jan 2017 - Dec 2017	78.1	1,243	71.9	63	6.2
Jan 2018 - Dec 2018	78.5	1,256	67.3	55	11.2
Jan 2019 - Dec 2019	78.5	1,250	69.0	61	9.5
Jan 2020 - Dec 2020	76.0	1,214	73.2	60	2.9
Jan 2021 - Dec 2021	75.7	1,199	76.9	67	-1.2
<i>change on year (% point for rate)</i>	-0.3	-15	3.8	7	-4.1

**Female**

	White Employment		Minority Ethnic Employment		Ethnicity Employment Rate Gap (%pt)
	Rate	Level (000s)	Rate	Level (000s)	
Jan 2011 - Dec 2011	66.9	1,136	48.9	27	18.0
Jan 2012 - Dec 2012	67.6	1,136	45.6	31	21.9
Jan 2013 - Dec 2013	68.0	1,149	47.7	28	20.4
Jan 2014 - Dec 2014	69.8	1,165	48.1	37	21.8
Jan 2015 - Dec 2015	71.2	1,187	45.2	33	26.0
Jan 2016 - Dec 2016	70.6	1,173	44.8	40	25.7
Jan 2017 - Dec 2017	72.0	1,200	49.4	44	22.6
Jan 2018 - Dec 2018	71.8	1,197	45.0	42	26.8
Jan 2019 - Dec 2019	73.1	1,210	51.1	54	22.0
Jan 2020 - Dec 2020	72.0	1,200	56.2	51	15.8
Jan 2021 - Dec 2021	72.0	1,188	49.0	48	23.0
<i>change on year (% point for rate)</i>	0.0	-12	-7.2	-3	7.2

Source: Annual Population Survey, ONS (Jan-Dec datasets)

**IMPORTANT NOTE:** Annual Population Survey (APS) responses for periods from April 2019 - March 2020 onwards were reweighted in August 2021 to new populations derived using growth rates from HM Revenue and Customs (HMRC) Real Time Information (RTI) to allow for different trends during the COVID-19 pandemic. Annual comparisons within this table are therefore based on estimates which may differ from those previously published. For further information, see Notes (page 43).

**Table 3.3: Employment patterns, Scotland, Jan-Mar 2022, (Thousands)**  
*not seasonally adjusted*

	Jan-Mar 2022 (000s)	change on Jan- Mar 2021 (000s)		change on Jan- Mar 2019 (000s)	
Total‡	2,687	40	↑	20	↑
Employees‡	2,384	38	↑	25	↑
Self employed‡	286	-6	↓	-8	↓
Unpaid family workers	9	3	↑	0	↔
Government-supported training and employment programmes	7	5	↑	2	↑
Full-time workers	1,981	-4	↓	18	↑
Part-time workers	704	47	↑	3	↑
Workers with second jobs	105	16	↑	18	↑
Temporary workers	139	15	↑	24	↑
<b>All males in employment</b>					
Total‡	1,337	1	↑	-32	↓
Employees‡	1,149	-4	↓	-27	↓
Self employed‡	177	0	↔	-11	↓
Unpaid family workers	6	2	↑	2	↑
Government-supported training and employment programmes	5	*	▪	*	▪
Full-time workers	1,154	-14	↓	-45	↓
Part-time workers	182	17	↑	14	↑
Workers with second jobs	57	24	↑	29	↑
Temporary workers	46	-7	↓	-10	↓
<b>All females in employment</b>					
Total‡	1,350	39	↑	52	↑
Employees‡	1,236	43	↑	52	↑
Self employed‡	109	-5	↓	3	↑
Unpaid family workers	3	1	↑	-2	↓
Government-supported training and employment programmes	*	*	▪	*	▪
Full-time workers	826	9	↑	63	↑
Part-time workers	522	30	↑	-12	↓
Workers with second jobs	49	-8	↓	-11	↓
Temporary workers	94	21	↑	34	↑

Source: Labour Force Survey, ONS

‡ Includes people who did not state whether they worked part-time or full-time.

\* Estimate suppressed as below reliability threshold.

#### Quality indicator

Shaded estimates are based on a small sample size. This may result in a less precise estimates, which should be used with caution.

Unshaded estimates are based on a larger sample size. This is likely to result in estimates of higher precision, although they will still be subject to some sampling variability.

**IMPORTANT NOTE:** Labour Force Survey (LFS) estimates from Jan-Mar 2020 to Feb-Apr 2021 were reweighted in July 2021 to new populations derived using growth rates from HM Revenue and Customs (HMRC) Real Time Information (RTI) to allow for different trends during the COVID-19 pandemic. Annual comparisons within this table are therefore based on estimates which may differ from those previously published. For further information, see Notes (page 43).

**Table 3.4: Underemployment, Scotland and UK, 2011-2021**  
*not seasonally adjusted*

	Scotland		UK	
	Rate (%)	Level (000s)	Rate (%)	Level (000s)
Jan 2011 - Dec 2011	9.9	243	9.7	2,782
Jan 2012 - Dec 2012	10.0	246	10.0	2,897
Jan 2013 - Dec 2013	9.6	237	10.0	2,937
Jan 2014 - Dec 2014	8.6	216	9.2	2,749
Jan 2015 - Dec 2015	9.2	234	8.6	2,651
Jan 2016 - Dec 2016	8.4	214	8.1	2,521
Jan 2017 - Dec 2017	8.0	209	7.8	2,467
Jan 2018 - Dec 2018	7.4	194	6.9	2,199
Jan 2019 - Dec 2019	7.1	187	7.1	2,272
Jan 2020 - Dec 2020	8.1	210	7.8	2,513
Jan 2021 - Dec 2021	6.5	166	6.7	2,122
<i>change on year (%pt for rate)</i>	<i>-1.7</i>	<i>-44</i>	<i>-1.2</i>	<i>-392</i>
<i>change on Jan 2019 - Dec 2019 (%pt for rate)</i>	<i>-0.6</i>	<i>-21</i>	<i>-0.4</i>	<i>-151</i>

Source: Annual Population Survey, ONS

*Notes:*

1 - Levels and rates based on working population aged 16 and over

2 - Underemployment rate based on those in employment (excludes those who did not respond to underemployment questions)

3 - Underemployment includes:

- those looking for more hours in their current role at same rate of pay
- those looking for an additional job
- those looking for a replacement job with more hours than their current job.

**IMPORTANT NOTE:** Annual Population Survey (APS) responses for periods January-December 2020 and January-December 2021 have been weighted to new populations derived using growth rates from HM Revenue and Customs (HMRC) Real Time Information (RTI) to allow for different trends during the COVID-19 pandemic. Annual comparisons within this table are therefore based on estimates which may differ from those previously published. For further information, see Notes (page 43).

**Table 3.5: Employment rates by highest qualification held and sex, Scotland and UK, Jan 2021 - Dec 2021**  
*not seasonally adjusted*

	Scotland			UK		
	Jan 2021 - Dec 2021 (%)	change on Jan 2020 - Dec 2020 (%pt)		Jan 2021 - Dec 2021 (%)	change on Jan 2020 - Dec 2020 (%pt)	
<b>All</b>						
Degree level and above	85.4	1.3	↑	86.5	0.5	↑
SVQ 4	79.3	0.5	↑	80.5	0.0	↔
SVQ 3	69.8	-1.6	↓	74.6	-0.5	↓
SVQ 2	61.6	-2.6	↓	65.8	-1.4	↓
SVQ 1	55.2	4.6	↑	60.0	-2.3	↓
Other qualification	67.3	-1.8	↓	71.8	-3.0	↓
No qualifications	43.9	-2.3	↓	42.7	-0.6	↓
<b>Males</b>						
Degree level and above	86.5	0.9	↑	88.9	0.3	↑
SVQ 4	82.4	-0.9	↓	84.1	-0.3	↓
SVQ 3	73.7	-1.7	↓	77.6	-0.7	↓
SVQ 2	64.2	-3.1	↓	70.1	-1.4	↓
SVQ 1	66.1	13.8	↑	65.7	-2.0	↓
Other qualification	77.2	-0.2	↓	80.2	-1.9	↓
No qualifications	47.6	0.0	↔	49.4	-0.8	↓
<b>Females</b>						
Degree level and above	84.5	1.5	↑	84.3	0.7	↑
SVQ 4	76.8	1.7	↑	77.4	0.2	↑
SVQ 3	65.0	-1.3	↓	71.2	-0.2	↓
SVQ 2	59.4	-2.3	↓	61.7	-1.4	↓
SVQ 1	41.2	-7.3	↓	53.2	-2.6	↓
Other qualification	57.4	-2.4	↓	61.7	-3.5	↓
No qualifications	39.9	-4.6	↓	34.8	-0.4	↓

Source: Annual Population Survey, ONS

**IMPORTANT NOTE:** Annual Population Survey (APS) responses for periods from April 2019 - March 2020 onwards were reweighted in August 2021 to new populations derived using growth rates from HM Revenue and Customs (HMRC) Real Time Information (RTI) to allow for different trends during the COVID-19 pandemic. Annual comparisons within this table are therefore based on estimates which may differ from those previously published. For further information, see Notes (page 43).



**Table 4.1: Unemployment by duration, Annual Population Survey, Jan 2021 - Dec 2021**  
*not seasonally adjusted*

Scotland	Level (000s)	change on Jan 2020 - Dec 2020			
		Level (000s)		%	
Less than 6 months	54	-18	↓	-24.7	↓
6 months and less than 12 months	19	2	↑	12.8	↑
1 year and less than 2 years	17	4	↑	35.0	↑
2 years or more	16	-1	↓	-5.2	↓

UK	Level (000s)	change on Jan 2020 - Dec 2020			
		Level (000s)		%	
Less than 6 months	776	-232	↓	-23.0	↓
6 months and less than 12 months	282	47	↑	19.8	↑
1 year and less than 2 years	221	70	↑	46.0	↑
2 years or more	201	39	↑	24.5	↑

Source: Annual Population Survey, ONS

Note: Levels based on persons aged 16 and over

**IMPORTANT NOTE:** Annual Population Survey (APS) responses for periods from April 2019 - March 2020 onwards were reweighted in August 2021 to new populations derived using growth rates from HM Revenue and Customs (HMRC) Real Time Information (RTI) to allow for different trends during the COVID-19 pandemic. Annual comparisons within this table are therefore based on estimates which may differ from those previously published. For further information, see Notes (page 43).

**Table 4.2: Model-based unemployment levels and rates by local authority, Jan 2021-Dec 2021**  
*not seasonally adjusted*

	Jan 2021-Dec 2021		change on Jan 2020-Dec 2020				change on Jan 2019-Dec 2019			
	Rate	Level	Rate (%pt)		Level Change	Rate (%pt)		Level Change		
Aberdeen City	4.1	5,200	-0.4	↓	-300	↓	1.0	↑	1,100	↑
Aberdeenshire	3.3	4,300	0.5	↑	300	↑	1.0	↑	1,000	↑
Angus	3.5	2,000	-0.5	↓	-100	↓	0.3	↑	200	↑
Argyll and Bute	3.6	1,400	0.1	↑	0	↔	0.7	↑	200	↑
City of Edinburgh	3.6	10,500	-0.4	↓	-800	↓	1.0	↑	3,300	↑
Clackmannanshire	3.8	900	-0.9	↓	-300	↓	0.5	↑	100	↑
Dumfries and Galloway	3.7	2,400	-0.3	↓	-200	↓	0.5	↑	200	↑
Dundee City	4.9	3,600	-0.5	↓	-400	↓	-0.5	↓	-200	↓
East Ayrshire	4.0	2,400	-1.2	↓	-600	↓	-0.5	↓	-300	↓
East Dunbartonshire	3.3	1,700	0.1	↑	0	↔	0.7	↑	300	↑
East Lothian	3.0	1,700	-1.1	↓	-400	↓	0.3	↑	200	↑
East Renfrewshire	3.6	1,500	0.1	↑	-100	↓	0.9	↑	300	↑
Falkirk	3.5	2,800	-0.9	↓	-800	↓	-0.2	↓	-200	↓
Fife	4.1	6,700	-0.8	↓	-1,900	↓	0.0	↔	-600	↓
Glasgow City	5.3	17,400	0.1	↑	300	↑	0.6	↑	2,900	↑
Highland	3.4	4,000	0.3	↑	100	↑	0.6	↑	700	↑
Inverclyde	3.8	1,500	-1.3	↓	-300	↓	-1.0	↓	-200	↓
Midlothian	2.9	1,400	-0.7	↓	-300	↓	0.2	↑	100	↑
Moray	3.5	1,600	-0.2	↓	-200	↓	0.3	↑	0	↔
Na h-Eileanan Siar	3.0	400	-0.3	↓	0	↔	0.6	↑	100	↑
North Ayrshire	4.9	2,700	-0.4	↓	-400	↓	-0.4	↓	-600	↓
North Lanarkshire	4.1	6,500	-1.3	↓	-2,300	↓	0.0	↔	-600	↓
Orkney Islands	3.1	300	0.5	↑	0	↔	1.2	↑	100	↑
Perth and Kinross	3.0	2,300	-0.8	↓	-600	↓	0.7	↑	400	↑
Renfrewshire	3.5	3,100	-0.8	↓	-900	↓	-0.2	↓	-300	↓
Scottish Borders	4.1	2,000	0.7	↑	100	↑	1.1	↑	300	↑
Shetland Islands	2.5	300	-0.1	↓	0	↔	0.3	↑	0	↔
South Ayrshire	4.1	2,000	-0.8	↓	-500	↓	0.4	↑	100	↑
South Lanarkshire	3.6	5,900	-0.6	↓	-1,100	↓	0.4	↑	800	↑
Stirling	3.7	1,700	0.2	↑	100	↑	-0.1	↓	-100	↓
West Dunbartonshire	4.3	1,800	-0.7	↓	-400	↓	-0.1	↓	-200	↓
West Lothian	3.3	3,000	-0.7	↓	-800	↓	0.4	↑	200	↑
<b>Scotland</b>	<b>3.9</b>	<b>105,100</b>	<b>-0.4</b>	<b>↓</b>	<b>-12,300</b>	<b>↓</b>	<b>0.4</b>	<b>↑</b>	<b>9,300</b>	<b>↑</b>

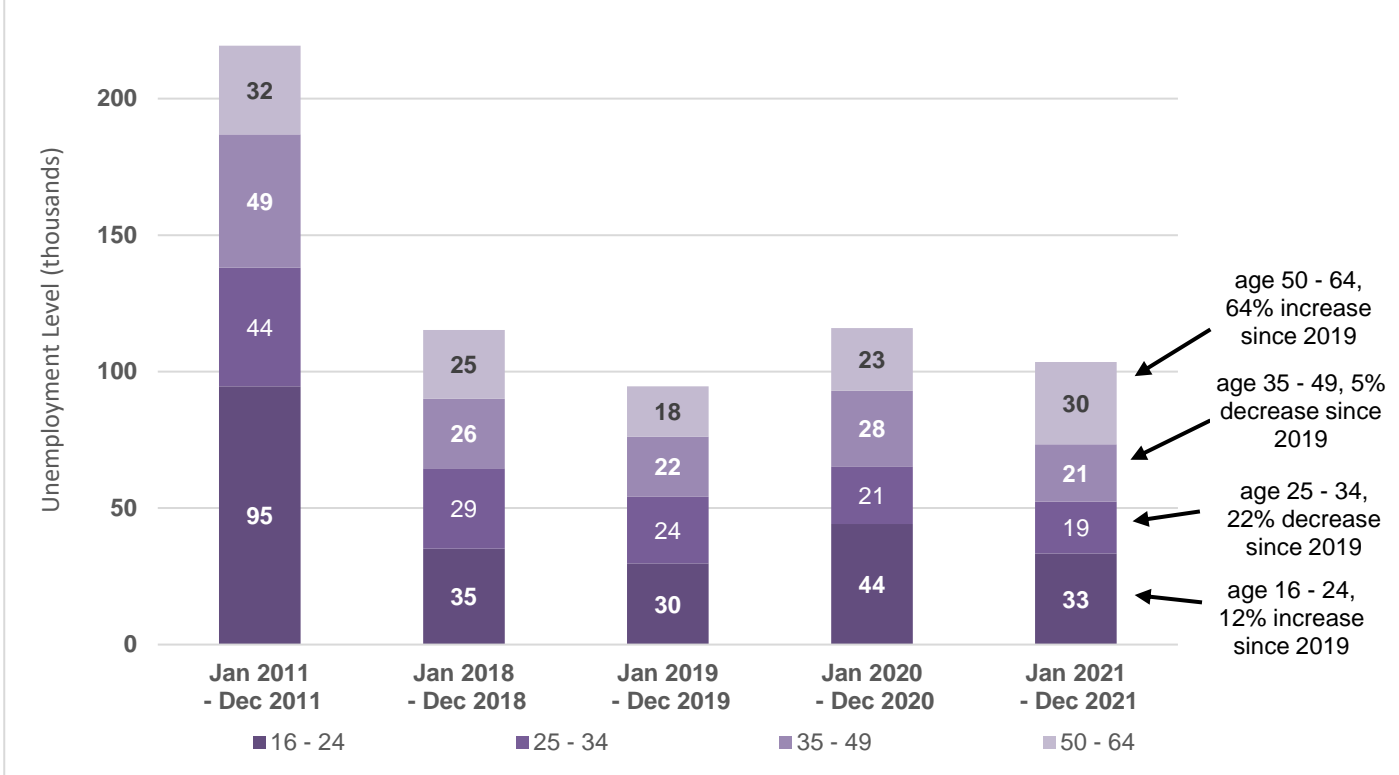
Sources: Annual Population Survey (ONS), Claimant Count (DWP)

Notes:

1. Levels rounded to the nearest hundred.
2. Rates are calculated on unrounded figures but changes over time are calculated on rounded levels and rates.
3. Totals may not equal the sum of individual parts due to rounding.
4. Unemployment estimates for local authority areas are model-based. Estimates for Scotland are not model-based and are taken directly from the Annual Population Survey.

**IMPORTANT NOTE:** Model-based unemployment levels and rates for periods from April 2019-March 2020 onwards were reweighted in September 2021 based on Annual Population Survey (APS) responses that were reweighted in August 2021 to new populations derived using growth rates from HM Revenue and Customs (HMRC) Real Time Information (RTI) to allow for different trends during the COVID-19 pandemic. Annual comparisons within this table are therefore based on estimates which may differ from those previously published. For further information, see Notes (page 43).

**Chart 4.1: ILO unemployment levels by age-group (16-64), Scotland**  
*not seasonally adjusted*

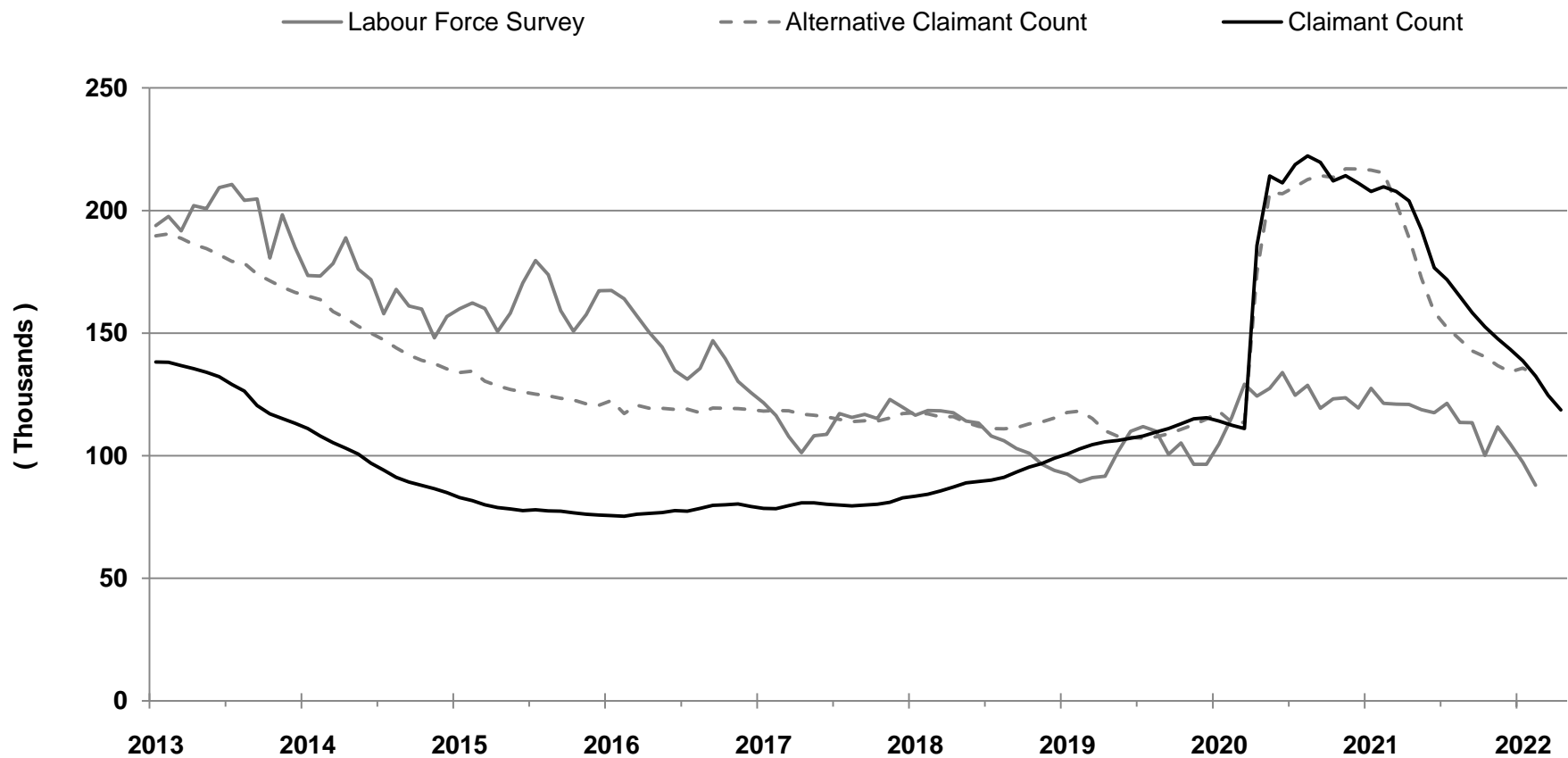


Source: Annual Population Survey, ONS (Jan-Dec datasets)

**IMPORTANT NOTE:** Annual Population Survey (APS) responses for periods from April 2020 - March 2021 onwards were reweighted in August 2021 to new populations derived using growth rates from HM Revenue and Customs (HMRC) Real Time Information (RTI) to allow for different trends during the COVID-19 pandemic. Therefore January 2020 - December 2020 estimates within this chart may differ from those previously published. For further information, see Notes (page 43).

**Chart 5.1: Unemployment, Alternative Claimant Count and Claimant Count levels, Scotland, January 2013 - April 2022**

*seasonally adjusted*



Sources: Labour Force Survey (ONS): Dec-Feb 2013 - Jan-Mar 2022

Claimant Count (ONS), Jan 2013 - Apr 2022

Alternative Claimant Count (DWP): Jan 2013 - Feb 2022

**IMPORTANT NOTE:** Labour Force Survey (LFS) estimates from Jan-Mar 2020 to Feb-Apr 2021 were reweighted in July 2021 to new populations derived using growth rates from HM Revenue and Customs (HMRC) Real Time Information (RTI) to allow for different trends during the COVID-19 pandemic. For further information, see Notes (page 43).

**Table 5.1a: Claimant Count levels, April 2022 (Experimental data)**

	Level	change on previous month		change on previous year		change on pre-pandemic (March 2020)	
	(000s)	(000s)		(000s)		(000s)	
Scotland	119	-6	↓	-85	↓	8	↑
England	1,391	-46	↓	-831	↓	358	↑
Wales	66	-4	↓	-42	↓	8	↑
Northern Ireland	37	-1	↓	-19	↓	7	↑
UK	1,613	-57	↓	-977	↓	381	↑

**Table 5.1b: Claimant Count rates, April 2022 (Experimental data)**

	Rate	change on previous month		change on previous year		change on pre-pandemic (March 2020)	
	(%)	(%pts)		(%pts)		(%pts)	
Scotland	3.9	-0.2	↓	-2.8	↓	0.4	↑
England	4.1	-0.1	↓	-2.5	↓	1.1	↑
Wales	4.0	-0.2	↓	-2.5	↓	0.5	↑
Northern Ireland	3.9	-0.1	↓	-2.0	↓	0.9	↑
UK	4.1	-0.1	↓	-2.5	↓	1.0	↑

Source: Claimant Count, ONS (seasonally adjusted)

Notes:

1. Levels rounded to nearest 1000.
2. The Claimant Count rate is calculated as a proportion of Claimant Count + Workforce jobs.
3. Claimant count rates are workplace based.
4. Data in these tables are seasonally adjusted. Therefore, they are not consistent with Table 5.2 onwards as these are based on data that is not seasonally adjusted.

ONS re-classified the Claimant Count series as experimental following the introduction of DWP Universal Credit and concerns that this series may be misleading.

**See Notes (page 43) for further information.**

**Table 5.2: Claimant Count by local authority (Experimental data)**  
*not seasonally adjusted*

	April 2022 Total Claimants	% Change on year		Claimant Count rate (%)	Change on year (%pts)	
Aberdeen City	5,590	-40.9	↓	3.6	-2.5	↓
Aberdeenshire	3,578	-43.8	↓	2.2	-1.7	↓
Angus	2,034	-44.4	↓	3.0	-2.4	↓
Argyll and Bute	1,607	-42.6	↓	3.2	-2.4	↓
City of Edinburgh	9,423	-48.0	↓	2.6	-2.4	↓
Clackmannanshire	1,251	-38.3	↓	3.9	-2.4	↓
Dumfries and Galloway	2,793	-37.7	↓	3.2	-2.0	↓
Dundee City	4,383	-35.6	↓	4.4	-2.4	↓
East Ayrshire	3,587	-36.0	↓	4.8	-2.7	↓
East Dunbartonshire	1,383	-43.6	↓	2.1	-1.7	↓
East Lothian	1,687	-50.7	↓	2.6	-2.6	↓
East Renfrewshire	1,062	-48.2	↓	1.9	-1.7	↓
Falkirk	3,365	-43.1	↓	3.3	-2.5	↓
Fife	8,949	-38.4	↓	3.9	-2.4	↓
Glasgow City	23,369	-35.1	↓	5.2	-2.8	↓
Highland	3,758	-49.9	↓	2.6	-2.6	↓
Inverclyde	2,032	-34.0	↓	4.2	-2.2	↓
Midlothian	1,467	-50.8	↓	2.6	-2.6	↓
Moray	1,628	-43.8	↓	2.8	-2.2	↓
Na h-Eileanan Siar	420	-43.5	↓	2.7	-2.1	↓
North Ayrshire	4,060	-37.5	↓	5.0	-3.0	↓
North Lanarkshire	8,515	-39.6	↓	3.9	-2.5	↓
Orkney Islands	228	-38.0	↓	1.7	-1.0	↓
Perth and Kinross	2,324	-43.2	↓	2.5	-1.9	↓
Renfrewshire	3,848	-45.3	↓	3.3	-2.8	↓
Scottish Borders	2,140	-40.3	↓	3.2	-2.1	↓
Shetland Islands	287	-33.7	↓	2.1	-1.0	↓
South Ayrshire	2,687	-40.6	↓	4.1	-2.8	↓
South Lanarkshire	7,251	-41.0	↓	3.6	-2.5	↓
Stirling	1,376	-48.5	↓	2.3	-2.1	↓
West Dunbartonshire	2,751	-37.7	↓	4.9	-3.0	↓
West Lothian	3,375	-46.8	↓	2.9	-2.5	↓
<b>Scotland</b>	<b>122,208</b>	<b>-41.0</b>	<b>↓</b>	<b>3.5</b>	<b>-2.4</b>	<b>↓</b>

Source: Claimant Count, ONS

Notes:

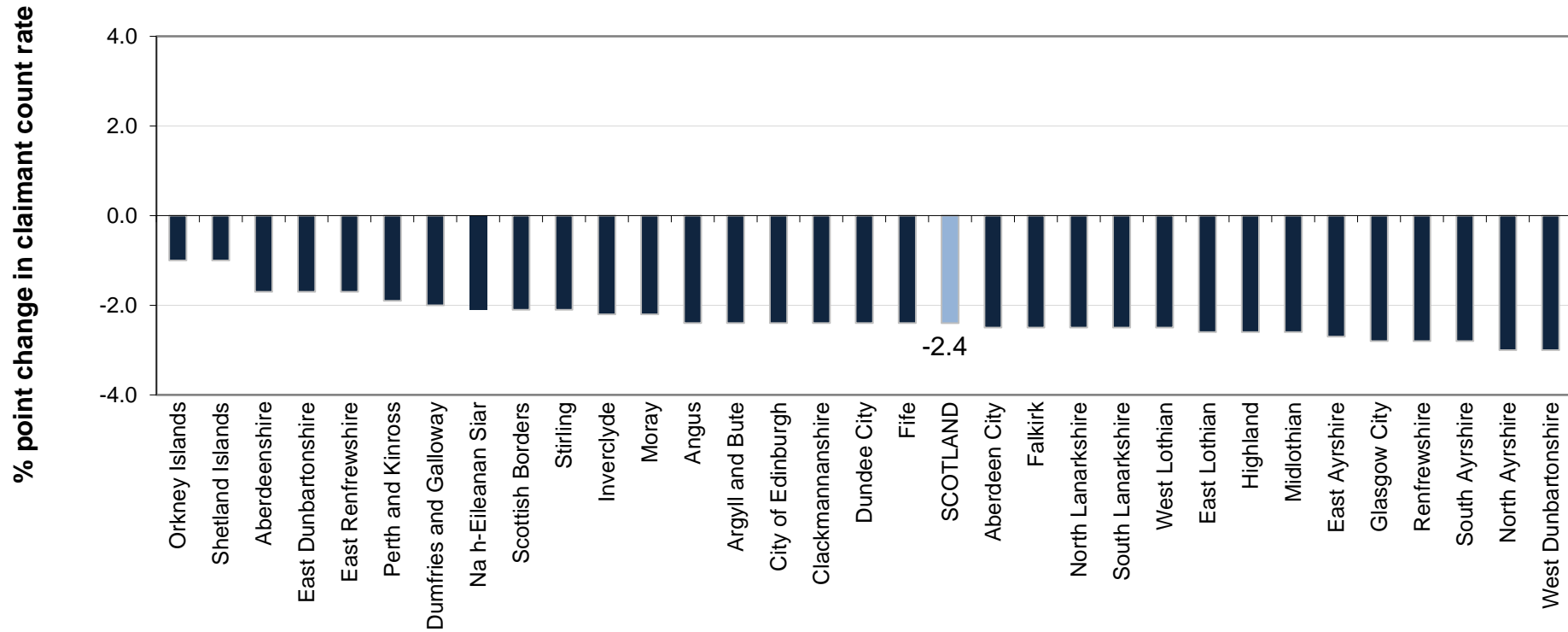
1. Levels rounded to nearest 5.

2. The Claimant Count rate is calculated as a proportion of the resident population, aged 16-64, based on the Mid-year population estimates for 2020.

ONS re-classified the Claimant Count series as experimental following the introduction of DWP Universal Credit and concerns that this series may be misleading.

**See Notes (page 43) for further information.**

Chart 5.2: Change in Claimant Count rate by local authority, April 2021 to April 2022 (Experimental data)



Source: Claimant Count, ONS

Notes:

1. Claimant Count rates are based on unrounded data. Chart labels are rounded to one decimal place.
2. Claimant Count rates in each local authority and for Scotland are calculated as a proportion of the resident population, aged 16-64, based on the Mid-year population estimates for 2020.

**Table 5.3: 16-24 Claimant Count levels and rates, Scotland and UK**  
(Experimental data)  
*not seasonally adjusted*

	Scotland		UK	
	Level	Rate (%)	Level	Rate (%)
<b>April 2021</b>	39,760	7.0	500,170	7.1
<b>April 2022</b>	19,335	3.4	261,645	3.7
<b>Change on year (rate as %pt)</b>	-20,425	-3.6	-238,525	-3.4

Source: Claimant Count, ONS

**Table 5.4: 16-24 Claimant Count levels and rates by sex, Scotland**  
(Experimental data)  
*not seasonally adjusted*

	Male		Female	
	Level	Rate (%)	Level	Rate (%)
<b>April 2021</b>	25,105	8.7	14,655	5.3
<b>April 2022</b>	12,305	4.3	7,025	2.5
<b>Change on year (rate as %pt)</b>	-12,800	-4.4	-7,625	-2.7

Source: Claimant Count, ONS

Notes:

1. Levels rounded to nearest 5.
  2. These Claimant Count rates for 16-24 year olds have been produced by the Scottish Government and are calculated as a proportion of the resident population, aged 16-24, based on the Mid-year population estimates for 2020.
- ONS re-classified the Claimant Count series as experimental following the introduction of DWP Universal Credit and concerns that this series may be misleading.

**See Notes (page 43) for further information.**



**Table 5.5: 16-24 Claimant Count levels and rates by Local Authority, April 2022 (Experimental data)**

	Level			Rate		
	April 2022	change on year		April 2022	change on year (%pts)	
<b>Scotland</b>	<b>19,335</b>	<b>-20,425</b>	<b>↓</b>	<b>3.4</b>	<b>-3.6</b>	<b>↓</b>
<i>Local Authority Area</i>						
Aberdeen City	830	-850	↓	3.2	-3.2	↓
Aberdeenshire	635	-685	↓	2.8	-3.1	↓
Angus	375	-380	↓	3.5	-3.6	↓
Argyll and Bute	250	-235	↓	3.1	-2.9	↓
City of Edinburgh	1,225	-1,685	↓	1.9	-2.6	↓
Clackmannanshire	210	-245	↓	4.2	-4.9	↓
Dumfries and Galloway	400	-435	↓	3.1	-3.4	↓
Dundee City	780	-670	↓	3.8	-3.3	↓
East Ayrshire	590	-570	↓	5.1	-4.9	↓
East Dunbartonshire	220	-225	↓	2.2	-2.2	↓
East Lothian	265	-415	↓	2.8	-4.4	↓
East Renfrewshire	165	-245	↓	1.7	-2.6	↓
Falkirk	615	-630	↓	4.0	-4.1	↓
Fife	1,590	-1,405	↓	4.0	-3.5	↓
Glasgow City	3,335	-2,750	↓	4.2	-3.5	↓
Highland	565	-870	↓	2.7	-4.2	↓
Inverclyde	345	-275	↓	4.6	-3.7	↓
Midlothian	265	-385	↓	3.1	-4.5	↓
Moray	260	-335	↓	2.9	-3.7	↓
Na h-Eileanan Siar	50	-65	↓	2.4	-3.4	↓
North Ayrshire	690	-655	↓	5.3	-5.0	↓
North Lanarkshire	1,450	-1,365	↓	4.0	-3.8	↓
Orkney Islands	40	-50	↓	2.2	-2.8	↓
Perth and Kinross	350	-490	↓	2.6	-3.6	↓
Renfrewshire	600	-735	↓	3.4	-4.2	↓
Scottish Borders	340	-430	↓	3.4	-4.3	↓
Shetland Islands	55	-50	↓	2.7	-2.4	↓
South Ayrshire	400	-540	↓	4.0	-5.3	↓
South Lanarkshire	1,095	-1,220	↓	3.6	-4.0	↓
Stirling	205	-375	↓	1.7	-3.1	↓
West Dunbartonshire	495	-375	↓	5.8	-4.4	↓
West Lothian	640	-790	↓	3.5	-4.4	↓

Source: Claimant Count, ONS

Notes:

1. Levels rounded to nearest 5.

2. These Claimant Count rates for 16-24 year olds have been produced by the Scottish Government and are calculated as a proportion of the resident population, aged 16-24, based on the Mid-year population estimates for 2020.

ONS re-classified the Claimant Count series as experimental following the introduction of DWP Universal Credit and concerns that this series may be misleading.

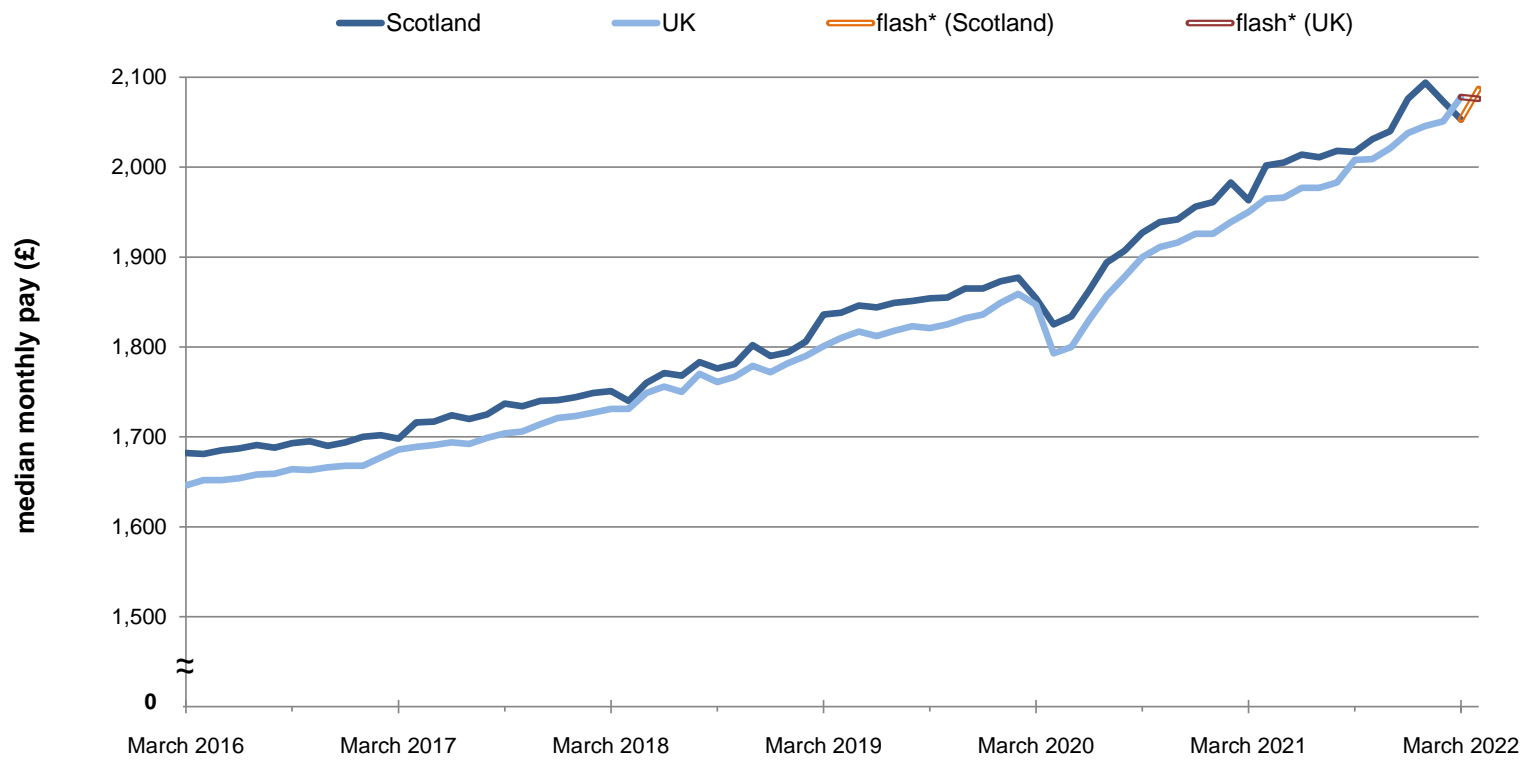
**See Notes (page 43) for further information.**

**Table 6.1: HMRC RTI data, Scotland and UK, March 2016 - March 2022 (Experimental data)**

<b>Scotland</b>	<b>March 2016</b>	<b>March 2017</b>	<b>March 2018</b>	<b>March 2019</b>	<b>March 2020</b>	<b>March 2021</b>	<b>March 2022</b>
<b>Total payrolled employees (000s)</b>	2,349	2,356	2,367	2,388	2,383	2,312	2,407
<i>Annual Growth (%)</i>		0.3	0.5	0.9	-0.2	-3.0	4.1
<b>Aggregate pay per month (£million)</b>	5,008	5,121	5,242	5,628	5,598	5,642	6,272
<i>Annual Growth (%)</i>		2.2	2.4	7.4	-0.5	0.8	11.2
<b>Median monthly pay (£ per month)</b>	1,682	1,698	1,751	1,836	1,854	1,963	2,053
<i>Annual Growth (%)</i>		1.0	3.1	4.9	1.0	5.9	4.6
<b>Mean monthly pay (£ per month)</b>	2,132	2,174	2,215	2,357	2,350	2,441	2,606
<i>Annual Growth (%)</i>		2.0	1.9	6.4	-0.3	3.9	6.8
<b>UK</b>	<b>March 2016</b>	<b>March 2017</b>	<b>March 2018</b>	<b>March 2019</b>	<b>March 2020</b>	<b>March 2021</b>	<b>March 2022</b>
<b>Total payrolled employees (000s)</b>	27,818	28,143	28,494	28,848	28,991	28,193	29,419
<i>Annual Growth (%)</i>		1.2	1.2	1.2	0.5	-2.8	4.4
<b>Aggregate pay per month (£million)</b>	62,489	65,305	68,204	72,031	73,373	74,818	85,035
<i>Annual Growth (%)</i>		4.5	4.4	5.6	1.9	2.0	13.7
<b>Median monthly pay (£ per month)</b>	1,646	1,686	1,731	1,801	1,847	1,950	2,078
<i>Annual Growth (%)</i>		2.4	2.7	4.0	2.6	5.6	6.6
<b>Mean monthly pay (£ per month)</b>	2,246	2,320	2,394	2,497	2,531	2,654	2,890
<i>Annual Growth (%)</i>		3.3	3.2	4.3	1.4	4.9	8.9

Source: PAYE real-time information, Seasonally adjusted (HMRC)

**Chart 6.1: Median monthly pay, Scotland and UK, March 2016 - April 2022 (Experimental data)**  
*seasonally adjusted*

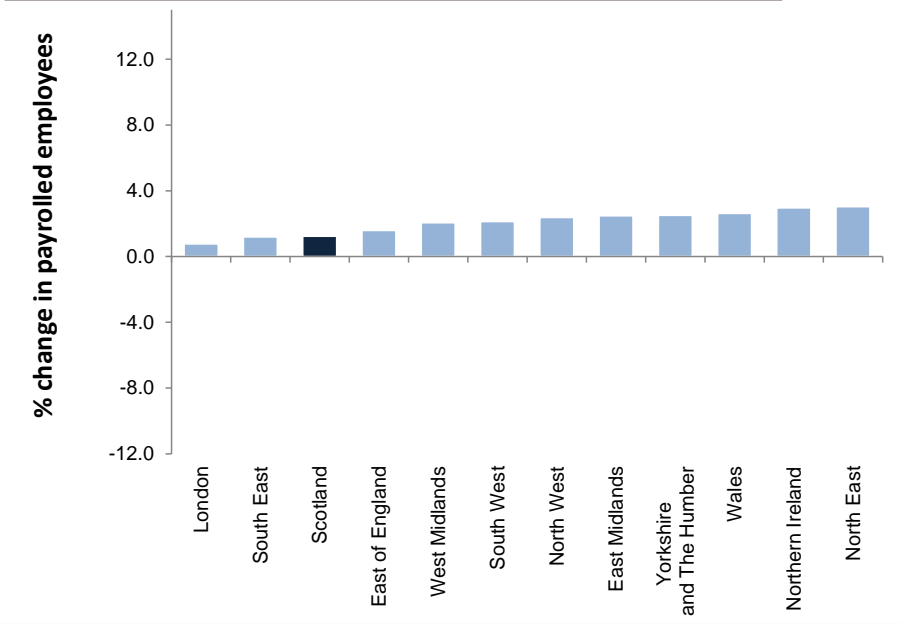


Source: PAYE real-time information (HMRC)

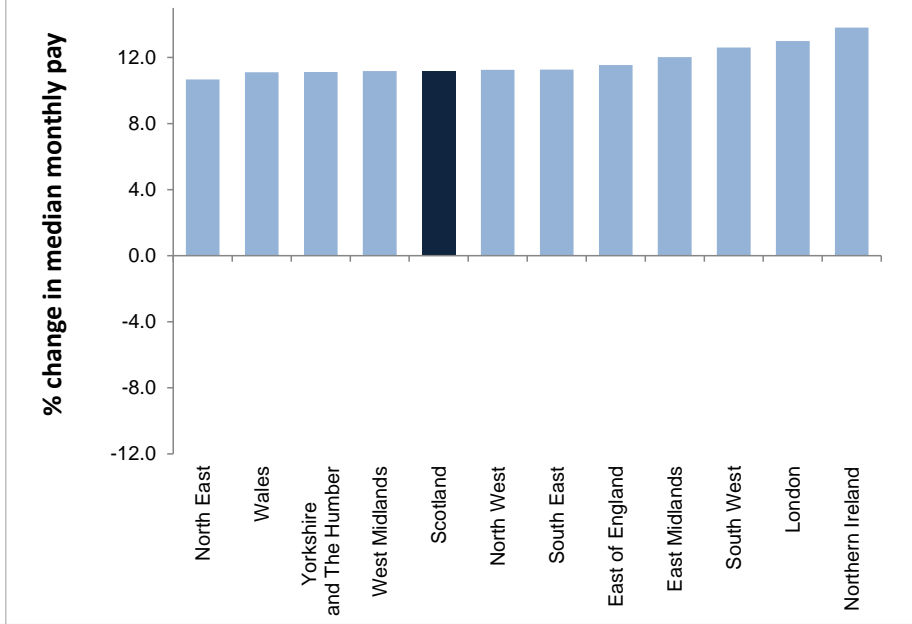
\*flash estimates for April 2022 are based on around 85% of information being available and may be subject to revisions.

**Charts 6.2 and 6.3: Payrolled employees and median monthly pay by region - change since pre-pandemic, February 2020 to April 2022 (Experimental data)**  
*seasonally adjusted*

**Chart 6.2: Total payrolled employees by Government Office Region - % change since February 2020 (pre-pandemic)**  
*seasonally adjusted*



**Chart 6.3: Median monthly pay by Government Office Region - % change since February 2020 (pre-pandemic)**  
*seasonally adjusted*

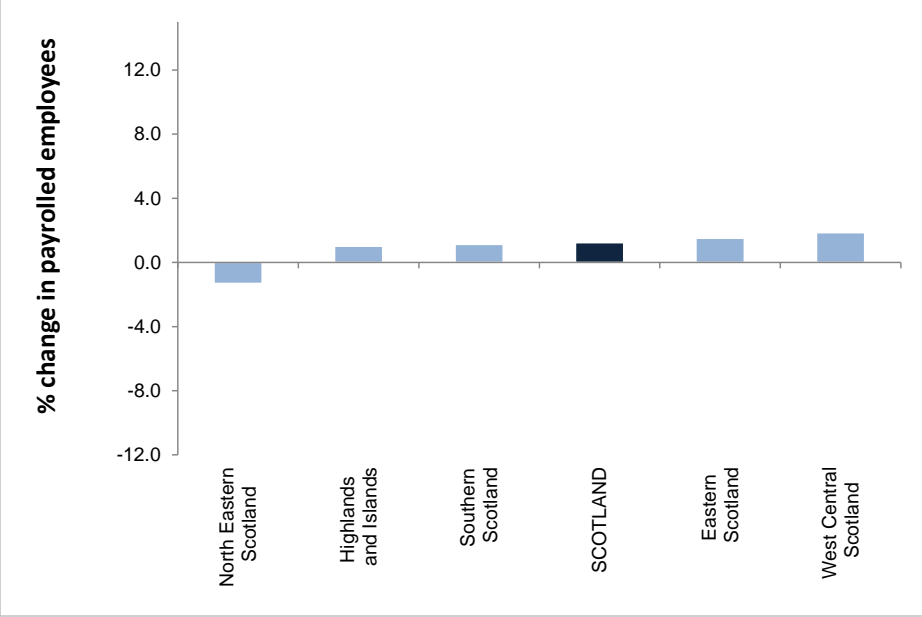


Source: PAYE real-time information (HMRC)

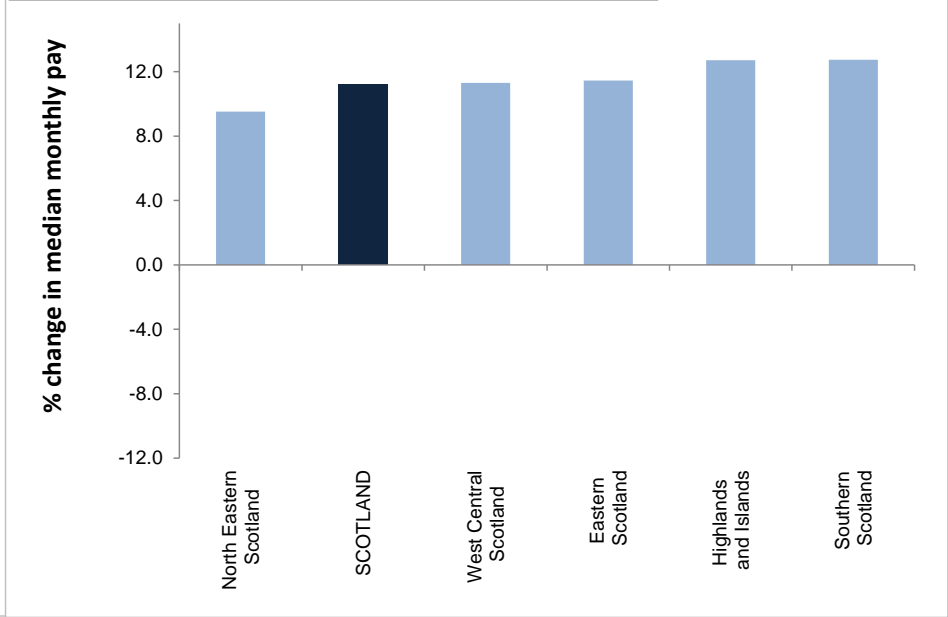
Early (flash) estimates for April 2022 are based on around 85% of information and are more likely to be subject to more significant revisions.

**Charts 6.4 and 6.5: Payrolled employees and median monthly pay (NUTS2) - change since pre-pandemic, February 2020 to April 2022 (Experimental data)**  
*seasonally adjusted*

**Chart 6.4: Total payrolled employees by NUTS2 region - % change since February 2020 (pre-pandemic)**  
*seasonally adjusted*



**Chart 6.5: Median monthly pay by NUTS2 region - % change since February 2020 (pre-pandemic)**  
*seasonally adjusted*



Source: PAYE real-time information (HMRC)

Early (flash) estimates for April 2022 are based on around 85% of information and are more likely to be subject to more significant revisions.

**Table 6.2: HMRC RTI data (NUTS2 and NUTS3 areas), April 2022 (Experimental data)**

	Payrolled employees			Median monthly pay		
	Level (000s)	% change since February 2020 (pre-pandemic)		£ per month	% change since February 2020 (pre-pandemic)	
<b>Scotland</b>	<b>2,416</b>	<b>1.2</b>	<b>↑</b>	<b>2,087</b>	<b>11.2</b>	<b>↑</b>
<b>North Eastern Scotland</b>	<b>226</b>	<b>-1.3</b>	<b>↓</b>	<b>2,209</b>	<b>9.5</b>	<b>↑</b>
Aberdeen City and Aberdeenshire	226	-1.3	↓	2,209	9.5	↑
<b>Highlands and Islands</b>	<b>204</b>	<b>1.0</b>	<b>↑</b>	<b>2,005</b>	<b>12.7</b>	<b>↑</b>
Caithness and Sutherland and Ross and Cromarty	39	0.5	↑	2,003	11.6	↑
Inverness and Nairn and Moray, Badenoch and Strathspey	91	1.1	↑	2,021	12.5	↑
Lochaber, Skye and Lochalsh, Arran and Cumbrae and Argyll and Bute	41	0.8	↑	1,928	14.3	↑
Na h-Eileanan Siar	12	3.1	↑	2,105	13.4	↑
Orkney Islands	10	2.0	↑	1,926	11.8	↑
Shetland Islands	11	-0.1	↓	2,271	12.3	↑
<b>Eastern Scotland</b>	<b>899</b>	<b>1.5</b>	<b>↑</b>	<b>2,102</b>	<b>11.5</b>	<b>↑</b>
Angus and Dundee City	113	1.5	↑	1,945	9.2	↑
City of Edinburgh	244	2.1	↑	2,227	12.9	↑
Clackmannanshire and Fife	181	0.8	↑	2,044	11.1	↑
East Lothian and Midlothian	94	2.8	↑	2,112	12.6	↑
Falkirk	74	0.0	↔	2,124	9.6	↑
Perth and Kinross and Stirling	106	1.4	↑	2,059	11.9	↑
West Lothian	88	1.3	↑	2,141	10.9	↑
<b>West Central Scotland</b>	<b>683</b>	<b>1.9</b>	<b>↑</b>	<b>2,087</b>	<b>11.3</b>	<b>↑</b>
East Dunbartonshire, West Dunbartonshire and Helensburgh and Lomond	99	0.5	↑	2,198	12.2	↑
Glasgow City	267	3.0	↑	2,018	12.2	↑
Inverclyde, East Renfrewshire and Renfrewshire	159	1.3	↑	2,129	11.0	↑
North Lanarkshire	158	1.4	↑	2,119	11.1	↑
<b>Southern Scotland</b>	<b>404</b>	<b>1.1</b>	<b>↑</b>	<b>2,044</b>	<b>12.7</b>	<b>↑</b>
Dumfries and Galloway	59	1.2	↑	1,907	12.5	↑
East Ayrshire and North Ayrshire mainland	104	1.0	↑	2,021	10.9	↑
Scottish Borders	47	0.6	↑	1,938	14.2	↑
South Ayrshire	44	0.5	↑	2,019	13.0	↑
South Lanarkshire	149	1.6	↑	2,138	11.8	↑

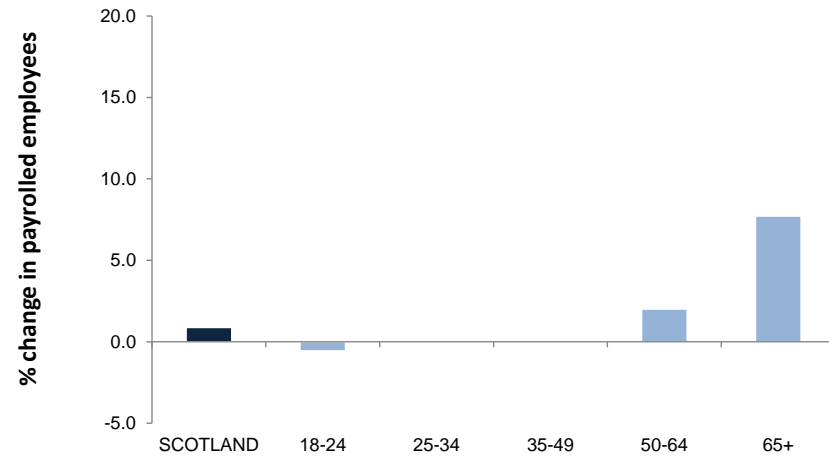
Source: PAYE real-time information, Seasonally adjusted (HMRC)

Early (flash) estimates for April 2022 are based on around 85% of information and are more likely to be subject to more significant revisions.

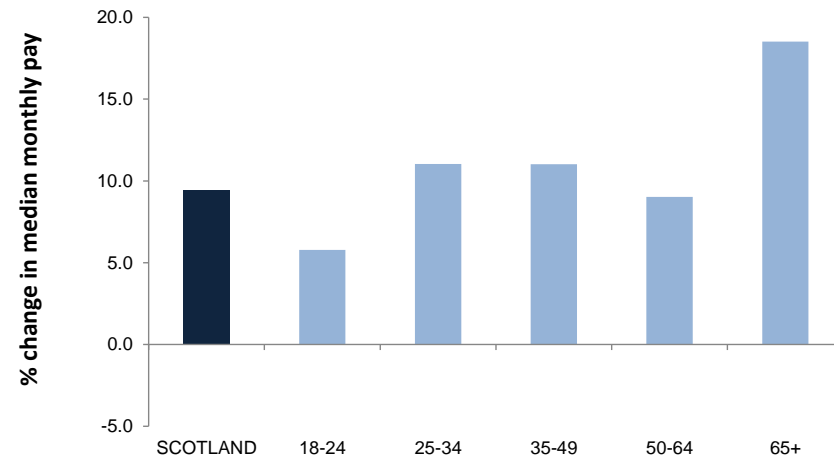
**Charts 6.6 and 6.7: Payrolled employees and median monthly pay by age - change since pre-pandemic, February 2020 to March 2022 (Experimental data)**

*seasonally adjusted*

**Chart 6.6: Total payrolled employees by age - % change since February 2020 (pre-pandemic)**  
*seasonally adjusted*



**Chart 6.7: Median monthly pay by age - % change since February 2020 (pre-pandemic)**  
*seasonally adjusted*



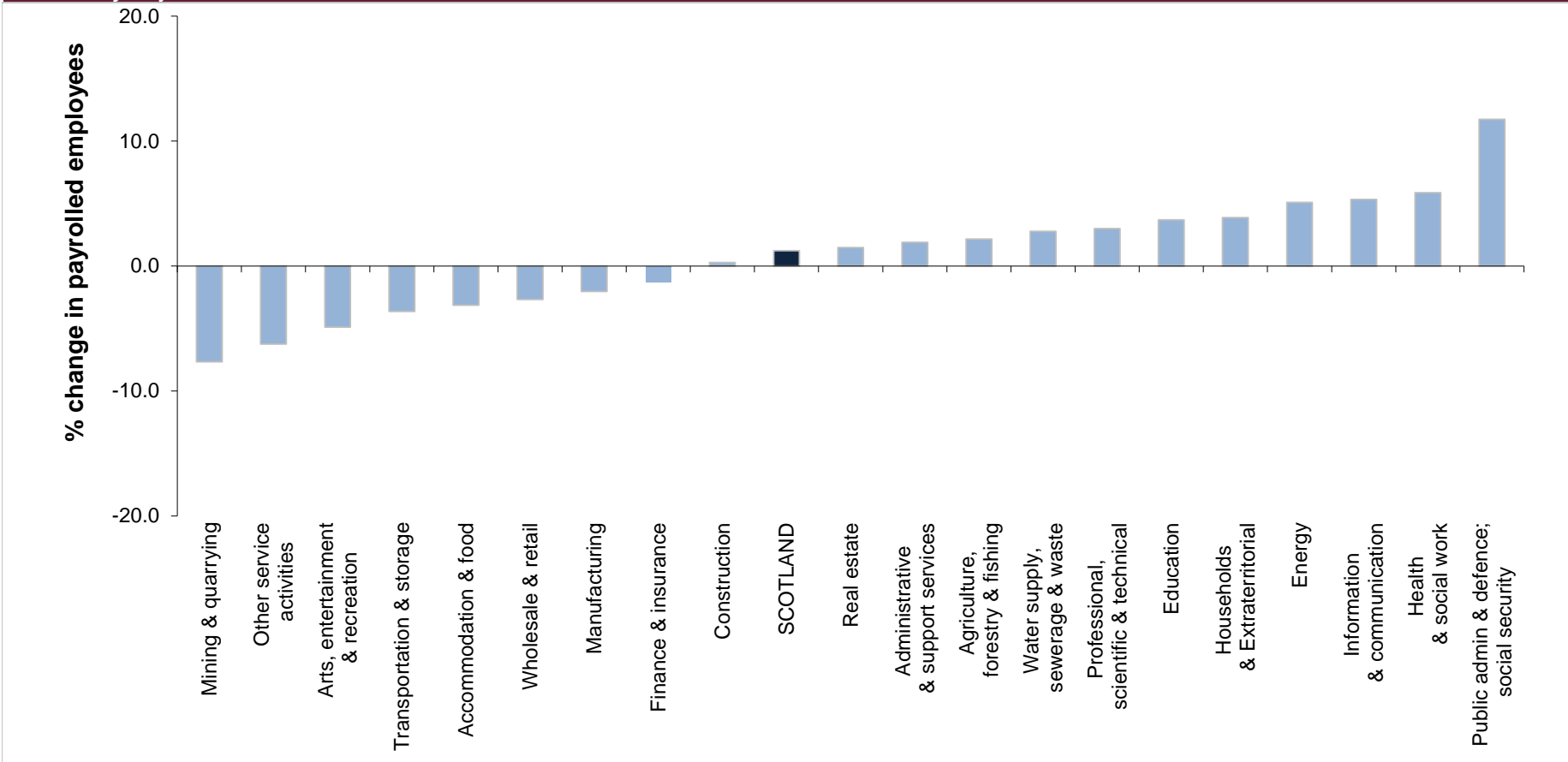
Source: PAYE real-time information (HMRC)

Notes:

Based on early March 2022 estimates published in April 2022. March 2022 estimates were based on around 85% of information available at the time of publication and may be subject to more significant revisions. Annual changes in payrolled employees and median monthly pay by age are updated quarterly. The next estimates, comparing early estimates for June 2022 with February 2020, will be published in July 2022.

**Chart 6.8: Payrolled employees by industry - change since pre-pandemic, February 2020 to April 2022 (Experimental data)**

*seasonally adjusted*



Source: PAYE real-time information (HMRC)

Notes:

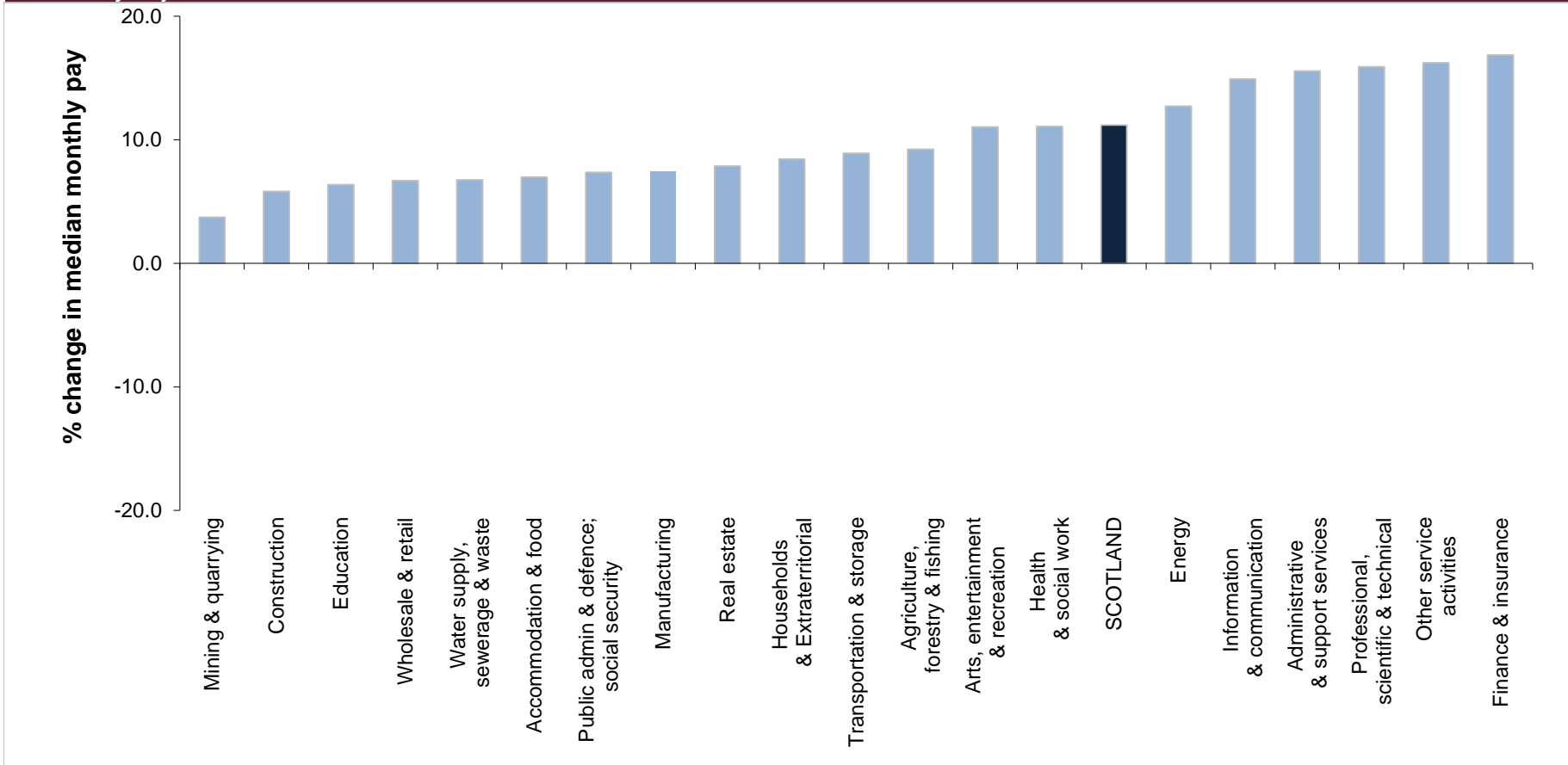
Based on early April 2022 estimates published in May 2022. April 2022 estimates are based on around 85% of information available at the time of publication and may be subject to more significant revisions.

Annual change in payrolled employees by industry sector is updated quarterly. The next estimates, comparing early estimates for July 2022 with February 2020, will be published in August 2022.



**Chart 6.9: Median monthly pay by industry - change since pre-pandemic, February 2020 to April 2022 (Experimental data)**

*seasonally adjusted*



Source: PAYE real-time information (HMRC)

Notes:

Based on early April 2022 estimates published in May 2022. April 2022 estimates are based on around 85% of information available at the time of publication and may be subject to more significant revisions.

Annual change in payrolled employees by industry sector is updated quarterly. The next estimates, comparing early estimates for July 2022 with February 2020, will be published in August 2022.

## Notes on the LFS/APS estimates [Sections 1 - 4]

**IMPORTANT NOTE:** Labour Force Survey (LFS) estimates from Jan-Mar 2020 to Feb-Apr 2021 were reweighted in July 2021 to new populations derived using growth rates from HM Revenue and Customs (HMRC) Real Time Information (RTI) to allow for different trends during the COVID-19 pandemic. Annual Population Survey responses for periods from April 2019 - March 2020 onwards were also reweighted by the same method in August 2021. The reweighting will give improved estimates of both rates and levels estimated from these surveys.

Further information on the reweighting process and its impact on labour market statistics can be found in an ONS article at:

<https://www.ons.gov.uk/employmentandlabourmarket/peopleinwork/employmentandemployeetypes/articles/impactofreweightingonlabourforcesurveykeyindicatorsuk/2020>

Subsequent to this reweighting, a small error was discovered in how it had been implemented. When calculating three-month averages for the PAYE real-time information (RTI) the months used were the previous three month average e.g. for the October to December LFS period, the RTI data used was for September to November. The impact on LFS economic activity estimates at national level is mostly below 0.1 per cent and the impact on rates is less than 0.02 percentage points. Estimates for Northern Ireland have not had the non-response bias adjustment from the recent reweighting fully applied. Early indications suggest the impact on UK headline rate estimates would be less than 0.1 percentage point. ONS will continue to investigate this and will keep users advised accordingly.

ONS are planning to reweight Labour Force Survey information for periods Jan-Mar 2020 onwards and Annual Population Survey data for Apr 2019 - Mar 2020 using HMRC RTI data. ONS intend to release the initial reweighted LFS estimates in their Labour Market publication in June 2022. ONS also plan to publish an article on 23 May 2022 which will provide indicative estimates of the impact of reweighting and a more detailed reweighting timeline.

## Measures of disability [Tables 3.1a and 3.1b]

In the April-June 2013 dataset, and subsequent datasets, questions used to derive current disability status of a person were changed. Estimates are now based on the core definition of disability under the Equality Act 2010, as specified in the Government Statistical Service (GSS) Harmonised Standards for Questions on disability.

- The definition includes people with a health condition or illness lasting 12 months or more that reduces their ability to carry out day-to-day activities.
- The definition excludes certain non-core groups covered by the Equality Act, such as those with progressive or past conditions that do not currently limit their activities, and conditions that only limit their activities without medication or treatment.
- Respondents are now asked to take into account any medication that they are currently taking when previously they were asked to consider their day-to-day activities without the use of medication.

The introduction of this new definition has created a discontinuity in the series and estimates are not directly comparable with earlier periods

## Claimant Count [Section 5]

The Claimant Count is not a measure of unemployment and changes in the Claimant Count will not be wholly because of changes in the number of people who are unemployed. It is a measure of the number of people claiming benefit principally for the reason of being unemployed:

- between January 1971 (when comparable estimates start) and September 1996, it is an estimate of the number of people who would have claimed unemployment-related benefits if Jobseeker's Allowance had existed at that time.
- between October 1996 and April 2013, the Claimant Count is a count of the number of people claiming Jobseeker's Allowance (JSA).
- between May 2013 and October 2013, the Claimant Count includes all claimants of Universal Credit (including those who were in work) as well as all JSA claimants
- from November 2013, the Claimant Count includes all out of work Universal Credit claimants as well as all JSA claimants .
- From April 2015 onwards the claimant count includes those claimants of Universal Credit who are required to search for work, i.e. within the Searching for Work conditionality regime as defined by the Department for Work & Pensions as well as all JSA claimants

Information for April 2022 is for the number of claimants as at 14 April 2022.

In addition to the Claimant Count, the Department for Work and Pensions (DWP) publishes quarterly Alternative Claimant Count statistics. These measure the number of people claiming unemployment-related benefits by modelling what the Claimant Count would have looked like if Universal Credit had been in place since 2013. Further information on the Alternative Claimant Count can be found at:

<https://www.gov.uk/government/collections/alternative-claimant-count-statistics>

## Further information

Further Labour Market information can be obtained from the following sites/sources.

### **Scottish Government Labour Market Statistics:**

Further commentary and charts are published in *Labour Market Trends: May 2022*

<https://www.gov.scot/publications/labour-market-trends-may-2022/>

### **Scottish Government Open Data:**

<https://statistics.gov.scot/home>

### **ONS:**

Labour Market Statistics Theme page

<http://www.ons.gov.uk/ons/taxonomy/index.html?nscl=Labour+Market>

Regional Labour Market Statistics

<https://www.ons.gov.uk/employmentandlabourmarket/peopleinwork/employmentandemployeetypes/bulletins/regionallabourmarket/previousReleases>

### **HMRC:**

Earnings and employment statistics from Pay As You Earn (PAYE) Real Time Information

[https://www.ons.gov.uk/employmentandlabourmarket/peopleinwork/earningsandworkinghours/bulletins/earningsandemploymentfrompayasyouearnrealtimeinformati  
onuk/previousReleases](https://www.ons.gov.uk/employmentandlabourmarket/peopleinwork/earningsandworkinghours/bulletins/earningsandemploymentfrompayasyouearnrealtimeinformati<br/>onuk/previousReleases)

### **NOMIS:**

Online database for official labour market statistics

<https://www.nomisweb.co.uk/default.asp>

## Contact details

Telephone: 0131 244 6773

email: [LMStats@gov.scot](mailto:LMStats@gov.scot)