

# Scotland's Labour Market - Monthly Briefing – July 2021

Scottish Government: Office of the Chief Economic Adviser



Scottish Government  
Riaghaltas na h-Alba  
gov.scot

This document contains up-to-date statistical information concerning the labour market in Scotland from a range of official sources.

This document is part of a collection:

<https://www.gov.scot/collections/labour-market-statistics/>

HEADLINE ESTIMATES gender ages	YOUTH 16-24 YEARS gender UK regions International gender	LABOUR MARKET disability minority ethnic underemployment qualifications full-time education	UNEMPLOYMENT duration model based	ALTERNATIVE CLAIMANT COUNT all ages 16-24 years local authorities	CLAIMANT COUNT all ages 16-24 years local authorities	HMRC EARNINGS HMRC PAYROLLED EMPLOYEES
--------------------------------------	--	--	---	--	--	--

Sections 1-4: Rates published from the Annual Population Survey remain robust and reliable, however levels and changes in levels should be used with caution. See page 44 for further information.

*new data*

<p style="text-align: center; margin: 0;"><b>1. HEADLINE MEASURES</b></p> <p style="margin: 0;"><i>Headline data</i></p> <p style="margin: 0;"><i>gender</i></p> <p style="margin: 0;"><i>age</i></p>	<ul style="list-style-type: none"> <li>y Table 1.1: Estimates of employment and unemployment by UK country, Mar-May 2021</li> <li>y Charts 1.1 and 1.2: Employment and unemployment rate trends for Scotland and UK, Mar-May 2021</li> <li>y Charts 1.3 and 1.4: Employment rate (16-64) by UK country, Mar-May 2021 - change on quarter and year</li> <li>y Charts 1.5 and 1.6: Unemployment rate (16+) by UK country, Mar-May 2021 - change on quarter and year</li> <li>y Table 1.2: Estimates of economic activity and inactivity by UK country, Mar-May 2021</li> <li>y Tables 1.3 and 1.4: Unemployment and Employment by Government Office Region, Mar-May 2021</li> <li>y Charts 1.7 and 1.8: Employment rate (16-64) for Government Office Regions, Mar-May 2021 - change on quarter and year</li> <li>y Charts 1.9 and 1.10: Unemployment rate (16+) for Government Office Regions, Mar-May 2021 - change on quarter and year</li> <li>y Table 1.5: Employment, ILO unemployment and inactivity rates by gender, Mar-May 2021</li> <li>y Chart 1.11: Employment rate by gender (16-64), Scotland and UK, 1997-2021</li> <li>y Chart 1.12: Unemployment rate by gender (16+), Scotland and UK, 1997-2021</li> <li>y Chart 1.13: Inactivity rate by gender (16-64), Scotland, UK 1997-2021</li> <li>y Table 1.6 : Employment, ILO Unemployment and Inactivity by age group, Scotland and UK (APS and LFS)</li> </ul>
<p style="text-align: center; margin: 0;"><b>2: YOUTH 16-24 YEARS</b></p> <p style="margin: 0;"><i>Headline data</i></p> <p style="margin: 0;"><i>gender</i></p> <p style="margin: 0;"><i>UK</i></p>	<ul style="list-style-type: none"> <li>y Table 2.1: Youth Employment, Unemployment and Inactivity (LFS and APS), Scotland and UK</li> <li>Charts 2.1 and 2.2: Youth employment and unemployment, Scotland and UK (APS)</li> <li>Table 2.2: Employment, ILO unemployment and inactivity for 16-24 age group by gender, Scotland and UK (APS), Jan 2020 - Dec 2020</li> <li>Charts 2.3 and 2.4: Youth employment and unemployment by gender, Scotland (APS)</li> <li>y Tables 2.3 and 2.4: Youth Unemployment and Employment by Government Office Region, Mar-May 2021</li> </ul>
<p style="text-align: center; margin: 0;"><b>3: LABOUR MARKET</b></p> <p style="margin: 0;"><i>disability</i></p> <p style="margin: 0;"><i>ethnicity</i></p> <p style="margin: 0;"><i>self-employed, full-time part-time</i></p> <p style="margin: 0;"><i>underemployment</i></p> <p style="margin: 0;"><i>qualifications</i></p>	<ul style="list-style-type: none"> <li>Table 3.1: Employment rates and levels of the population aged 16-64 by disability status, Scotland (LFS and APS), 2014-2021</li> <li>Table 3.2: Employment rates and levels of the population aged 16-64 by ethnicity and gender, Scotland, 2011 - 2020</li> <li>y Table 3.3: Employment patterns, Scotland, Mar-May 2021</li> <li>Table 3.4: Underemployment, Scotland and UK, 2010-2020</li> <li>Table 3.5: Employment rates by highest qualification held and gender, Scotland and UK, Jan 2020 - Dec 2020</li> </ul>

# Scotland's Labour Market - Monthly Briefing – July 2021

Scottish Government: Office of the Chief Economic Adviser



Scottish Government  
Riaghaltas na h-Alba  
gov.scot

This document contains up-to-date statistical information concerning the labour market in Scotland from a range of official sources.

This document is part of a collection:

<https://www.gov.scot/collections/labour-market-statistics/>

HEADLINE ESTIMATES gender ages	YOUTH 16-24 YEARS gender UK regions International gender	LABOUR MARKET disability minority ethnic underemployment qualifications full-time education	UNEMPLOYMENT duration model based	ALTERNATIVE CLAIMANT COUNT all ages 16-24 years local authorities	CLAIMANT COUNT all ages 16-24 years local authorities	HMRC EARNINGS HMRC PAYROLLED EMPLOYEES
--------------------------------------	--	--	---	--	--	--

Sections 1-4: Rates published from the Annual Population Survey remain robust and reliable, however levels and changes in levels should be used with caution. See page 44 for further information.

*new  
data*

<p style="text-align: center;"><b>4: UNEMPLOYMENT</b></p> <p><i>by duration model-based by age</i></p>	<p>Table 4.1: Unemployment by duration, Annual Population Survey, Jan 2020 - Dec 2020 Table 4.2: Model Based Unemployment levels and rates by Local Authority Chart 4.1: ILO unemployment levels by age-group (16-64), Scotland</p>
<p style="text-align: center;"><b>5: CLAIMANT COUNT</b></p> <p><i>16+ years</i></p> <p><i>16-24 years</i></p>	<p><b>EXPERIMENTAL STATISTICS</b></p> <p>y Chart 5.1: Unemployment, Alternative Claimant Count and Claimant Count levels, Scotland, January 2013 - June 2021 y Table 5.1: Claimant Count data for June 2021 - (Experimental Data) y Table 5.2: Claimant Count by local authority (Experimental data) y Chart 5.2: Change in Claimant Count rate by local authority, June 2020 to June 2021 (Experimental data) y Tables 5.3 and 5.4: 16-24 Claimant Count levels and rates, Scotland and UK (Experimental data) y Table 5.5: 16-24 Claimant Count levels and rates by Local Authority, June 2021 (Experimental data)</p>
<p style="text-align: center;"><b>6: ALTERNATIVE CLAIMANT COUNT</b></p> <p><i>16+ years</i></p> <p><i>16-24 years</i></p>	<p><b>EXPERIMENTAL STATISTICS</b></p> <p>y Table 6.1: Alternative Claimant Count data for May 2021 - (Experimental Data) y Table 6.2: Alternative Claimant Count by local authority (Experimental data) y Tables 6.3 and 6.4: 16-24 Alternative Claimant Count levels and rates, Scotland and UK (Experimental data) y Table 6.5: 16-24 Alternative Claimant Count levels and rates by Local Authority (Experimental data)</p>
<p style="text-align: center;"><b>7: HMRC REAL TIME PAYE DATA</b></p> <p><i>Scotland and UK</i></p> <p><i>by region</i></p>	<p><b>EXPERIMENTAL STATISTICS</b></p> <p>y Table 7.1: HMRC RTI data, Scotland and UK, May 2015 - May 2021 (Experimental data) y Chart 7.1: Median gross monthly pay, Scotland and UK, May 2015 - June 2021 (Experimental Statistics) y Charts 7.2 and 7.3: Payrolled employees and median monthly pay by region - annual change, May 2020 to May 2021 (Experimental data) y Charts 7.4 and 7.5: Payrolled employees and median monthly pay (NUTS2) - annual change, May 2020 to May 2021 (Experimental data) y Table 7.2: HMRC RTI data (NUTS2 and NUTS3 areas), May 2021 (Experimental data)</p>
<p style="text-align: center;"><b>BACKGROUND INFORMATION</b></p> <p>Notes - 1 Notes - 2</p>	<p>Further information on revisions in response to COVID-19 measures, Alternative Claimant Count, Claimant Count and Measures of Disability Further sources and contact details</p>

**Table 1.1: Estimates of employment and unemployment by UK country, Mar-May 2021**  
*seasonally adjusted*

	Level ('000)							Rate						
	Level	change on Dec-Feb 2021		change on Mar-May 2020		change on Mar-May 2011		Rate (%)	change on Dec-Feb 2021 (%pt)		change on Mar-May 2020 (%pt)		change on Mar-May 2011 (%pt)	
<b>Employment* (levels 16+, rates 16-64)</b>														
Scotland	2,635	-12	↓	11	↑	128	↑	74.0	-0.4	↓	0.3	↑	2.6	↑
England	27,236	36	↑	-499	↓	2,450	↑	75.1	0.1	↑	-1.2	↓	4.5	↑
Wales	1,465	-2	↓	-25	↓	95	↑	73.6	0.4	↑	-0.6	↓	5.0	↑
Northern Ireland	845	3	↑	-13	↓	41	↑	70.3	0.4	↑	-0.7	↓	2.3	↑
UK	32,180	25	↑	-526	↓	2,714	↑	74.8	0.1	↑	-1.0	↓	4.3	↑
<b>Unemployment** (16+)</b>														
Scotland	121	-7	↓	-3	↓	-89	↓	4.4	-0.2	↓	-0.1	↓	-3.4	↓
England	1,425	-46	↓	198	↑	-686	↓	5.0	-0.2	↓	0.7	↑	-2.9	↓
Wales	59	-16	↓	18	↑	-58	↓	3.9	-1.0	↓	1.2	↑	-4.0	↓
Northern Ireland	31	1	↑	9	↑	-30	↓	3.6	0.0	↔	1.1	↑	-3.6	↓
UK	1,637	-68	↓	222	↑	-864	↓	4.8	-0.2	↓	0.7	↑	-3.0	↓

Source: Labour Force Survey, ONS

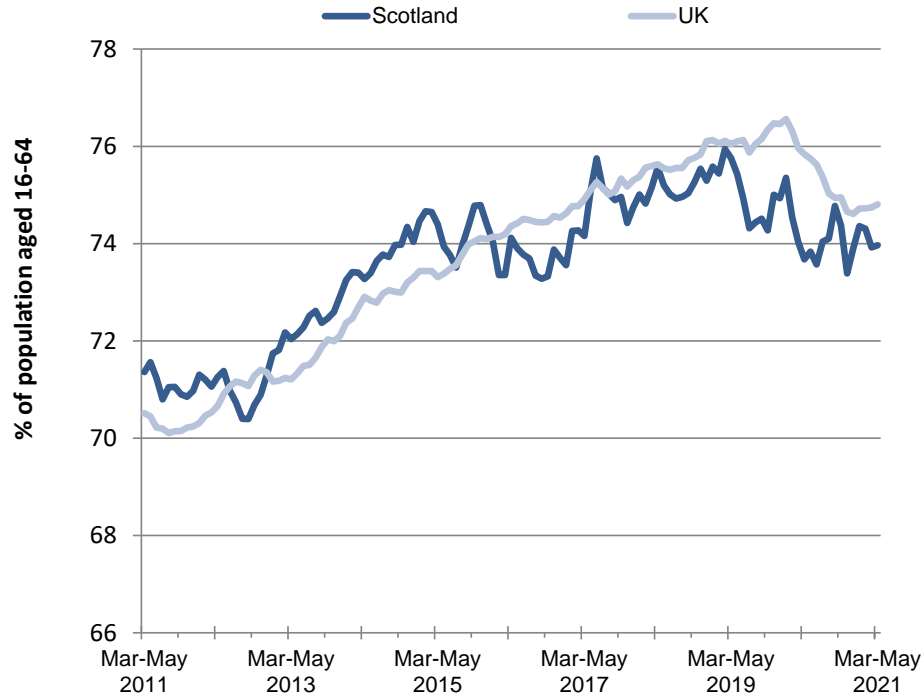
Note: \*Denominator = all persons aged 16-64 \*\*Denominator = total economically active (16+)

**IMPORTANT NOTE:** Labour Force Survey (LFS) estimates from January to March 2020 until February to April 2021 have been reweighted to new populations derived using growth rates from HMRC Real Time Information to allow for different trends during the COVID-19 pandemic. Quarterly and annual comparisons within this table are therefore based on estimates which may differ from those previously published. For further information, see Notes (page 44).

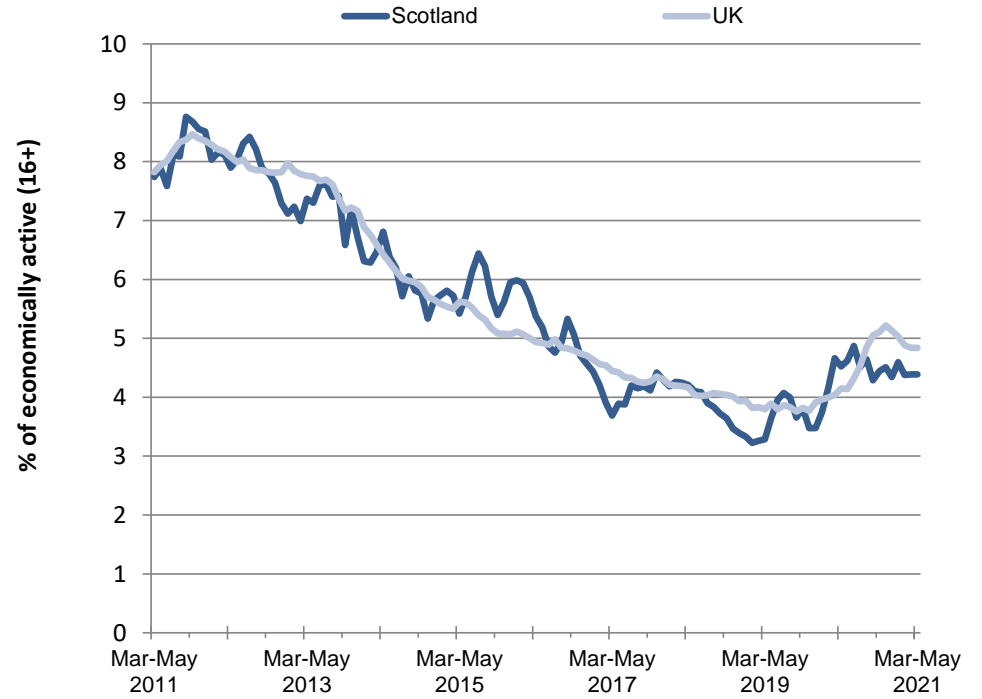
**Charts 1.1 and 1.2: Employment and unemployment rate trends for Scotland and UK, Mar-May 2021**

*seasonally adjusted*

**Chart 1.1: Employment rate (16-64), Scotland and UK**  
*seasonally adjusted*



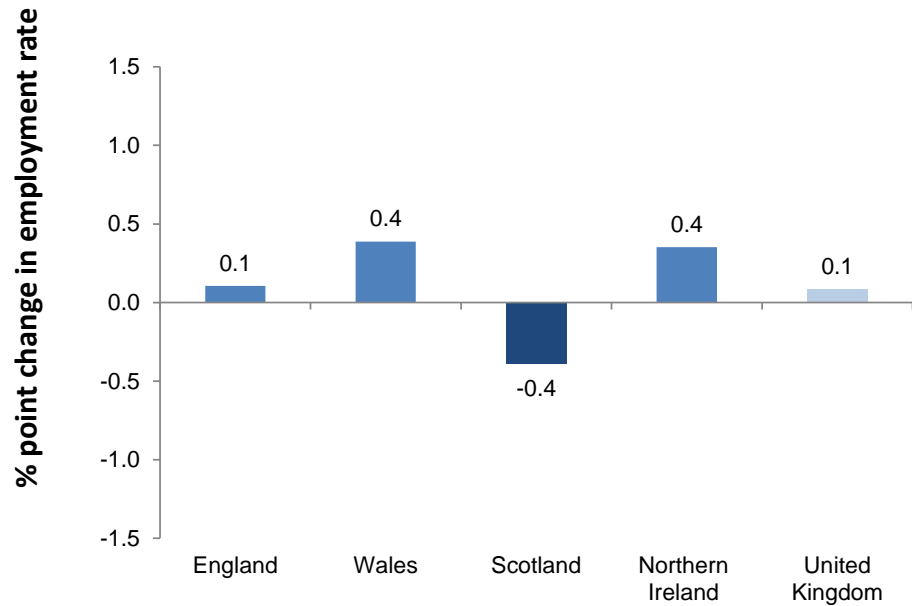
**Chart 1.2: Unemployment rate (16+), Scotland and UK**  
*seasonally adjusted*



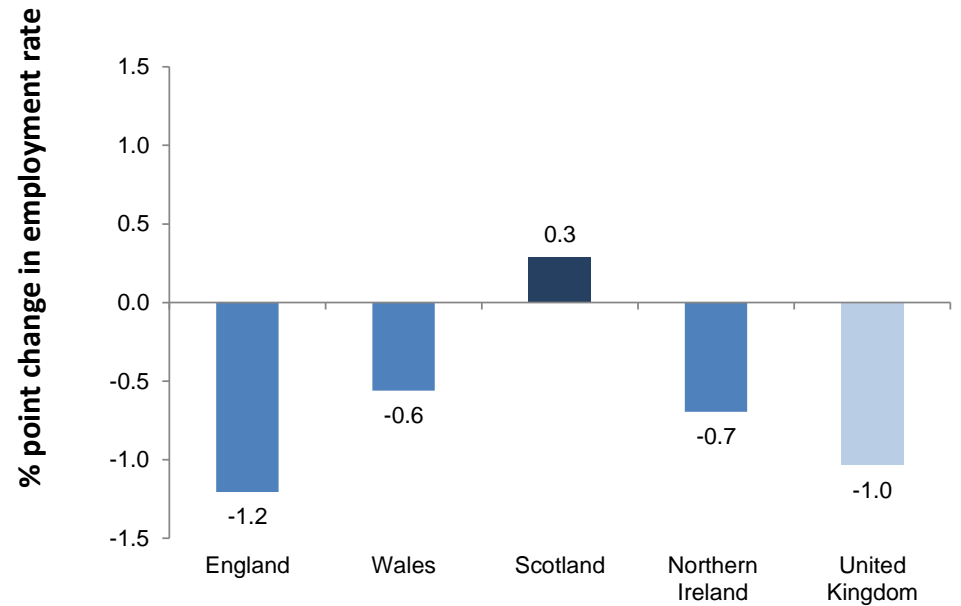
Source: Labour Force Survey, ONS

**Charts 1.3 and 1.4: Employment rate (16-64) by UK country, Mar-May 2021 - change on quarter and year**  
*seasonally adjusted*

**Chart 1.3: Employment rate (16-64) by UK country - change on quarter**  
*seasonally adjusted*



**Chart 1.4: Employment rate (16-64) by UK country - change on year**  
*seasonally adjusted*

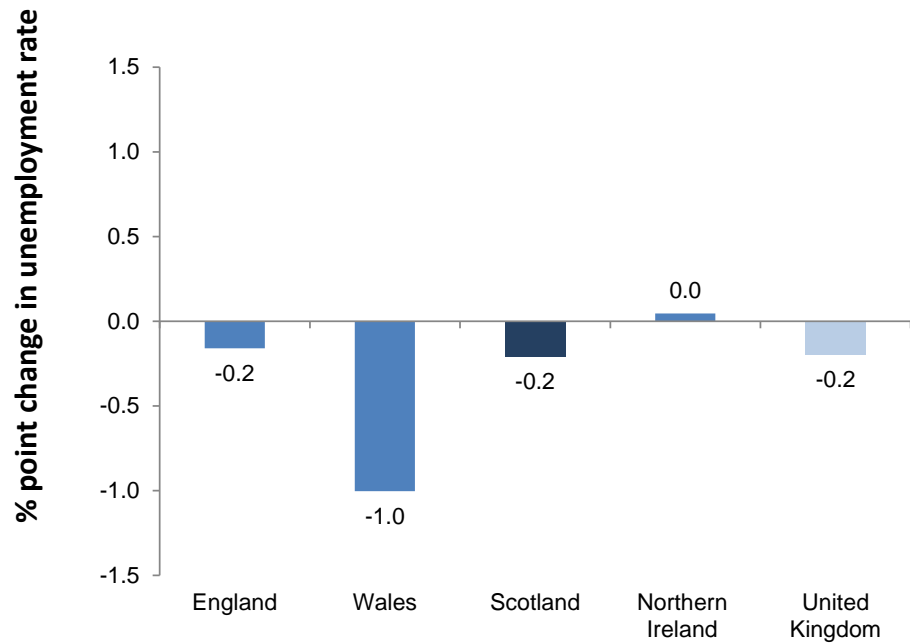


Source: Labour Force Survey, ONS

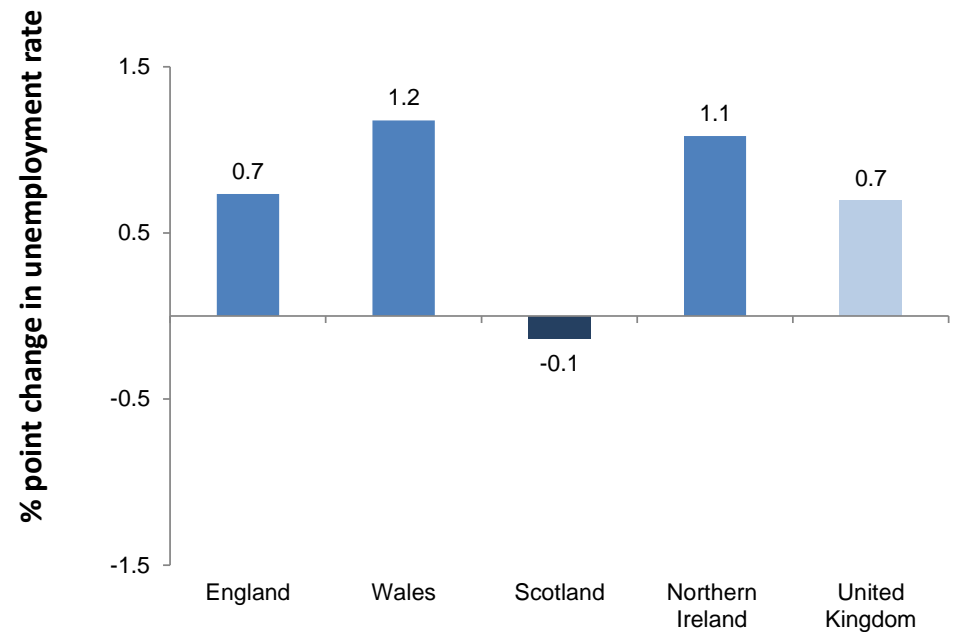
Note: Chart bars based on unrounded data. Chart labels rounded to one decimal place.

**Charts 1.5 and 1.6: Unemployment rate (16+) by UK country, Mar-May 2021 - change on quarter and year**  
*seasonally adjusted*

**Chart 1.5: Unemployment rate (16+) by UK country - change on quarter**  
*seasonally adjusted*



**Chart 1.6: Unemployment rate (16+) by UK country - change on year**  
*seasonally adjusted*



Source: Labour Force Survey, ONS

Note: Chart bars based on unrounded data. Chart labels rounded to one decimal place.

**Table 1.2: Estimates of economic activity and inactivity by UK country, Mar-May 2021**

*seasonally adjusted*

	Level ('000)							Rate						
	Level	change on Dec-Feb 2021		change on Mar-May 2020		change on Mar-May 2011		Rate (%)	change on Dec-Feb 2021 (%pt)		change on Mar-May 2020 (%pt)		change on Mar-May 2011 (%pt)	
<b>Economic Activity* (levels 16+, rates 16-64)</b>														
Scotland	2,755	-19	↓	7	↑	39	↑	77.4	-0.6	↓	0.2	↑	-0.1	↓
England	28,661	-10	↓	-301	↓	1,764	↑	79.1	0.0	↔	-0.7	↓	2.3	↑
Wales	1,524	-18	↓	-7	↓	37	↑	76.6	-0.4	↓	0.4	↑	1.9	↑
Northern Ireland	876	3	↑	-3	↓	10	↑	72.9	0.4	↑	0.1	↑	-0.3	↓
UK	33,817	-43	↓	-304	↓	1,850	↑	78.7	-0.1	↓	-0.5	↓	2.0	↑
<b>Economic Inactivity* (16-64)</b>														
Scotland	773	20	↑	-9	↓	0	↔	22.6	0.6	↑	-0.2	↓	0.1	↑
England	7,275	15	↑	219	↑	-620	↓	20.9	0.0	↔	0.7	↑	-2.3	↓
Wales	444	8	↑	-10	↓	-44	↓	23.4	0.4	↑	-0.4	↓	-1.9	↓
Northern Ireland	315	-5	↓	-3	↓	4	↑	27.1	-0.4	↓	-0.1	↓	0.3	↑
UK	8,806	38	↑	197	↑	-659	↓	21.3	0.1	↑	0.5	↑	-2.0	↓

Source: Labour Force Survey, ONS

Note: \*Denominator = all aged 16-64

**IMPORTANT NOTE:** Labour Force Survey (LFS) estimates from January to March 2020 until February to April 2021 have been reweighted to new populations derived using growth rates from HMRC Real Time Information to allow for different trends during the COVID-19 pandemic. Quarterly and annual comparisons within this table are therefore based on estimates which may differ from those previously published. For further information, see Notes (page 44).

**Table 1.3: Unemployment by Government Office Region (LFS), Mar-May 2021**  
seasonally adjusted

	Level ('000)					Rate				
	Level	change on Dec-Feb 2021		change on Mar-May 2020		Rate (%)	change on Dec-Feb 2021 (%pt)		change on Mar-May 2020 (%pt)	
North East	75	0	↔	6	↑	5.8	0.0	↔	0.6	↑
North West	174	-16	↓	27	↑	4.9	-0.4	↓	0.9	↑
Yorkshire and The Humber	135	-5	↓	21	↑	5.0	-0.2	↓	0.8	↑
East Midlands	118	-14	↓	13	↑	4.9	-0.5	↓	0.7	↑
West Midlands	168	-3	↓	18	↑	5.7	-0.2	↓	0.6	↑
East	128	5	↑	3	↑	4.0	0.2	↑	0.1	↑
London	330	-38	↓	64	↑	6.5	-0.7	↓	1.2	↑
South East	195	35	↑	43	↑	4.1	0.7	↑	1.0	↑
South West	103	-11	↓	3	↑	3.7	-0.4	↓	0.2	↑
Wales	59	-16	↓	18	↑	3.9	-1.0	↓	1.2	↑
Northern Ireland	31	1	↑	9	↑	3.6	0.0	↔	1.1	↑
<b>Scotland</b>	121	-7	↓	-3	↓	4.4	-0.2	↓	-0.1	↓
<b>United Kingdom</b>	1,637	-68	↓	222	↑	4.8	-0.2	↓	0.7	↑
England	1,425	-46	↓	198	↑	5.0	-0.2	↓	0.7	↑

Source: Labour Force Survey, ONS

**Table 1.4: Employment by UK Countries and Regions (LFS), Mar-May 2021**  
seasonally adjusted

	Level ('000)					Rate				
	Level	change on Dec-Feb 2021		change on Mar-May 2020		Rate (%)	change on Dec-Feb 2021 (%pt)		change on Mar-May 2020 (%pt)	
North East	1,206	-1	↓	-42	↓	72.0	0.0	↔	-2.0	↓
North West	3,395	14	↑	-118	↓	73.0	0.0	↔	-2.3	↓
Yorkshire and The Humber	2,542	24	↑	-34	↓	72.9	0.7	↑	-0.7	↓
East Midlands	2,295	-13	↓	-71	↓	74.8	-0.5	↓	-2.1	↓
West Midlands	2,777	32	↑	-6	↓	74.0	0.8	↑	-0.2	↓
East	3,067	2	↑	-30	↓	77.6	0.2	↑	-0.1	↓
London	4,724	27	↑	-2	↓	74.5	0.4	↑	-0.6	↓
South East	4,529	-40	↓	-128	↓	77.7	-0.5	↓	-1.7	↓
South West	2,702	-10	↓	-69	↓	77.0	-0.2	↓	-1.7	↓
Wales	1,465	-2	↓	-25	↓	73.6	0.4	↑	-0.6	↓
Northern Ireland	845	3	↑	-13	↓	70.3	0.4	↑	-0.7	↓
<b>Scotland</b>	2,635	-12	↓	11	↑	74.0	-0.4	↓	0.3	↑
<b>United Kingdom</b>	32,180	25	↑	-526	↓	74.8	0.1	↑	-1.0	↓
England	27,236	36	↑	-499	↓	75.1	0.1	↑	-1.2	↓

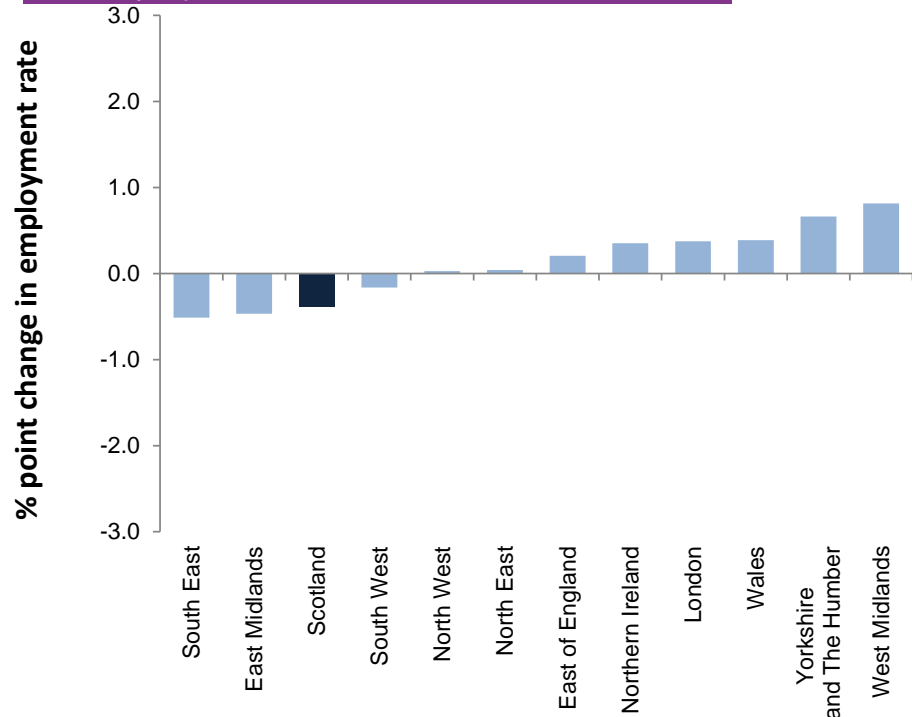
Source: Labour Force Survey, ONS

**IMPORTANT NOTE:** Labour Force Survey (LFS) estimates from January to March 2020 until February to April 2021 have been reweighted to new populations derived using growth rates from HMRC Real Time Information to allow for different trends during the COVID-19 pandemic. Quarterly and annual comparisons within this table are therefore based on estimates which may differ from those previously published. For further information, see Notes (page 44).

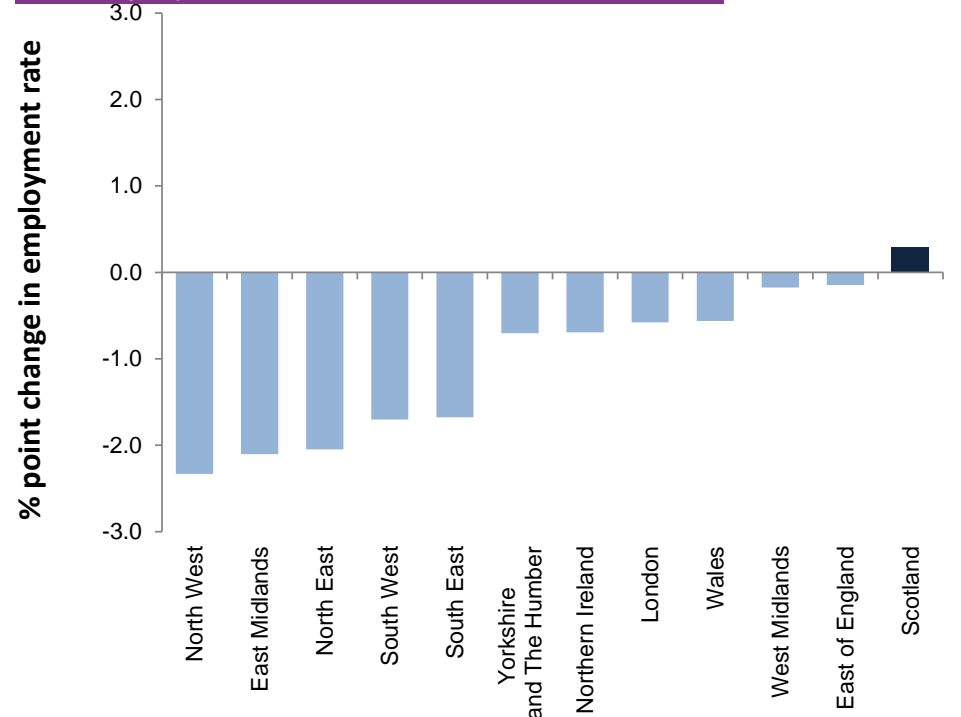


**Charts 1.7 and 1.8: Employment rate (16-64) for Government Office Regions, Mar-May 2021 - change on quarter and year**  
*seasonally adjusted*

**Chart 1.7: Employment rate (16-64) by Government Office Region - change on quarter**  
*seasonally adjusted*



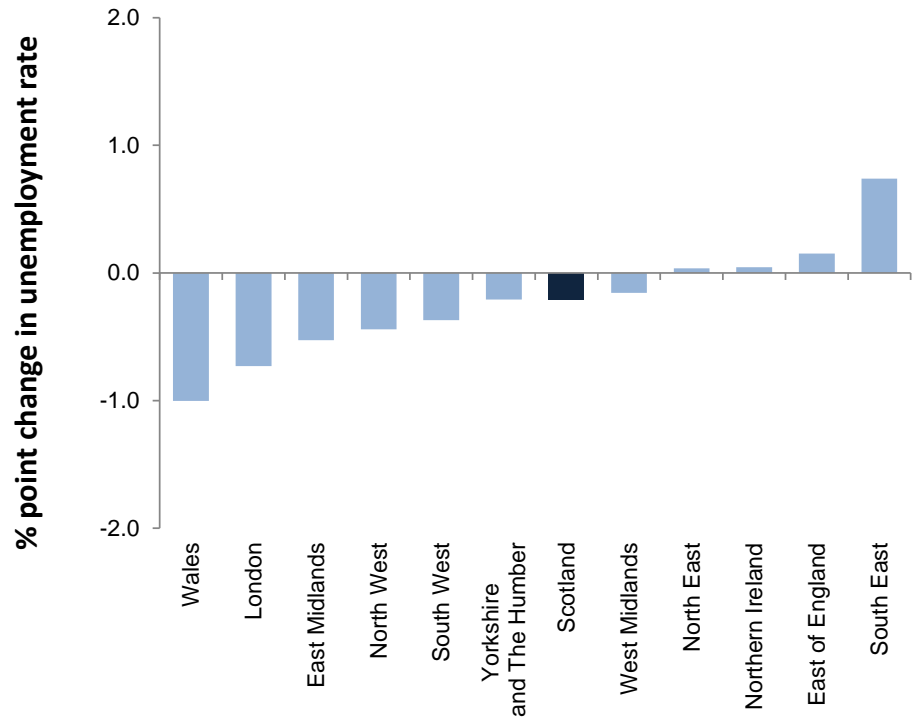
**Chart 1.8: Employment rate (16-64) by Government Office Region - change on year**  
*seasonally adjusted*



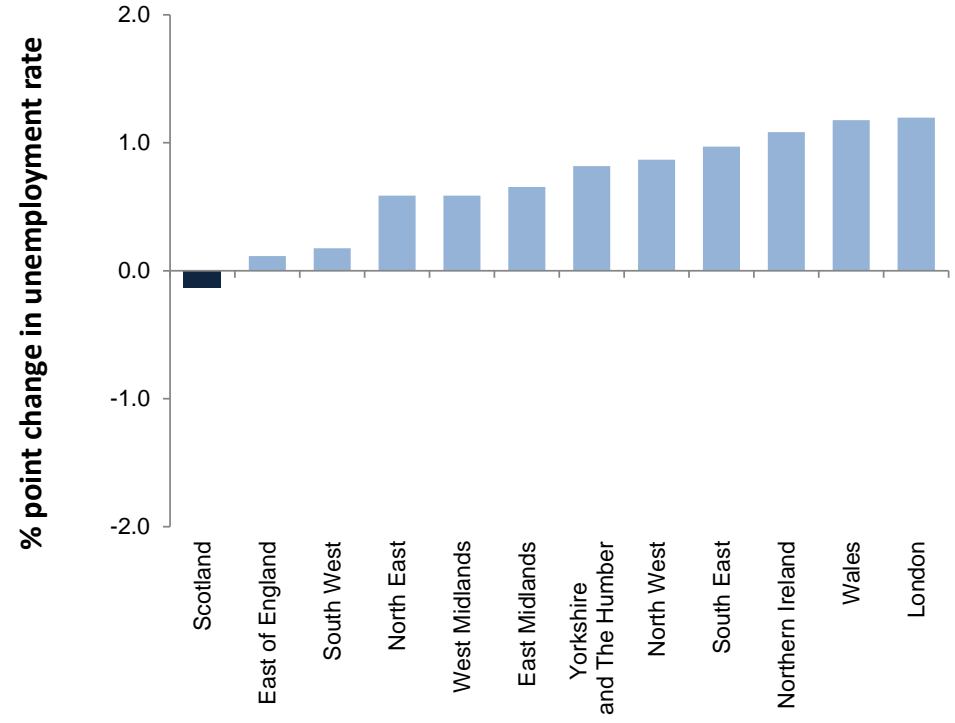
Source: Labour Force Survey, ONS

**Charts 1.9 and 1.10: Unemployment rate (16+) for Government Office Regions, Mar-May 2021 - change on quarter and year**  
*seasonally adjusted*

**Chart 1.9: Unemployment rate (16+) by Government Office Region - change on quarter**  
*seasonally adjusted*



**Chart 1.10: Unemployment rate (16+) by Government Office Region - change on year**  
*seasonally adjusted*



Source: Labour Force Survey, ONS

**Table 1.5: Employment, ILO unemployment and inactivity rates by gender, Mar-May 2021**  
*seasonally adjusted*

	Gender	Scotland					UK				
		Rate (%)	Change on quarter (%pts)		Change on year (%pts)		Rate (%)	Change on quarter (%pts)		Change on year (%pts)	
Employment Rate*	People	74.0	-0.4	↓	0.3	↑	74.8	0.1	↑	-1.0	↓
	Men	75.6	-0.4	↓	-0.5	↓	78.1	0.3	↑	-1.7	↓
	Women	72.4	-0.4	↓	1.1	↑	71.6	-0.1	↓	-0.4	↓
Unemployment Rate**	People	4.4	-0.2	↓	-0.1	↓	4.8	-0.2	↓	0.7	↑
	Men	5.0	0.2	↑	0.3	↑	4.9	-0.4	↓	0.7	↑
	Women	3.8	-0.7	↓	-0.6	↓	4.8	0.0	↔	0.7	↑
Inactivity Rate*	People	22.6	0.6	↑	-0.2	↓	21.3	0.1	↑	0.5	↑
	Men	20.4	0.2	↑	0.3	↑	17.8	0.0	↔	1.2	↑
	Women	24.7	1.0	↑	-0.6	↓	24.8	0.2	↑	-0.1	↓

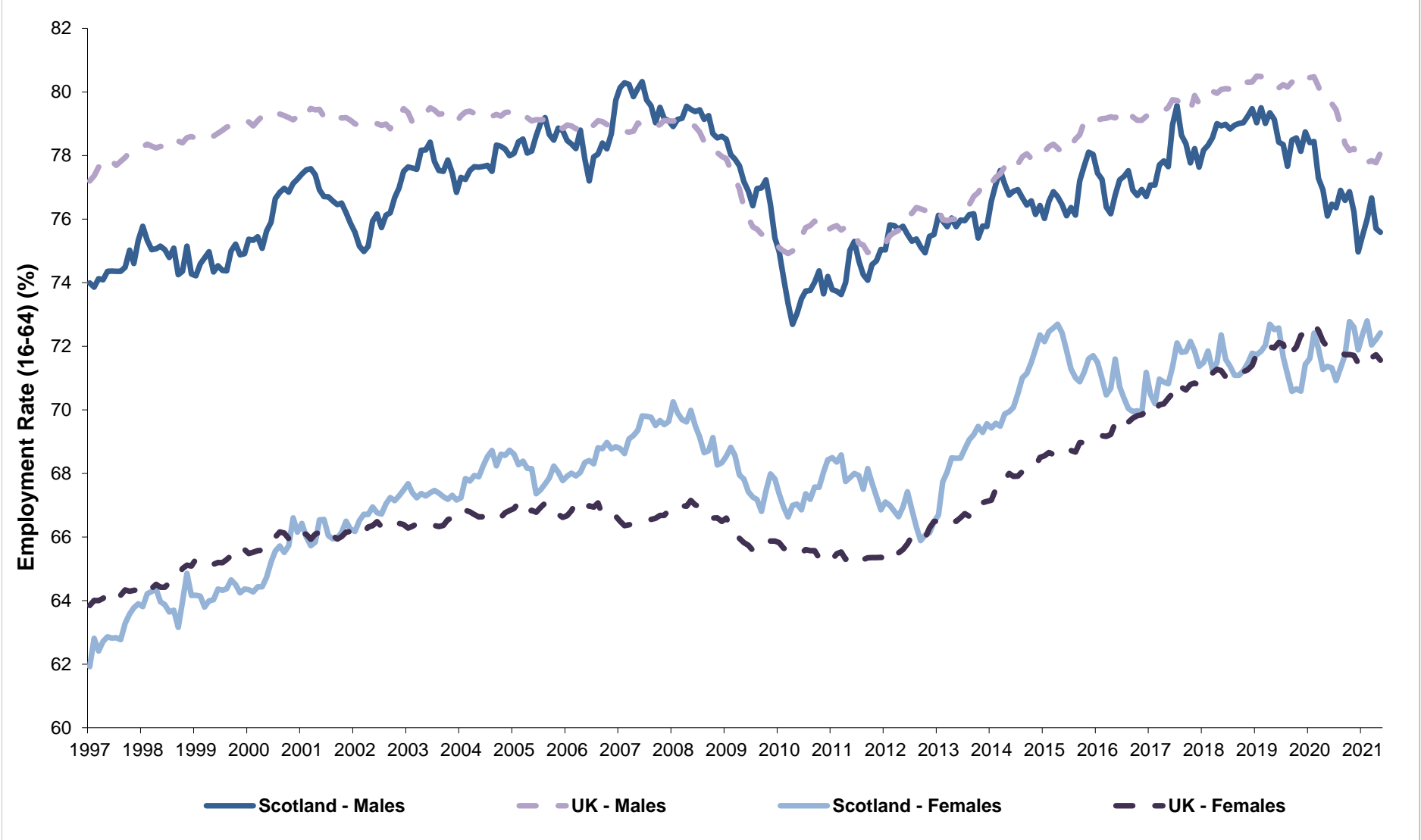
Source: Labour Force Survey, ONS

Note: \* Denominator = population of aged 16-64

\*\*Denominator = Economically active population

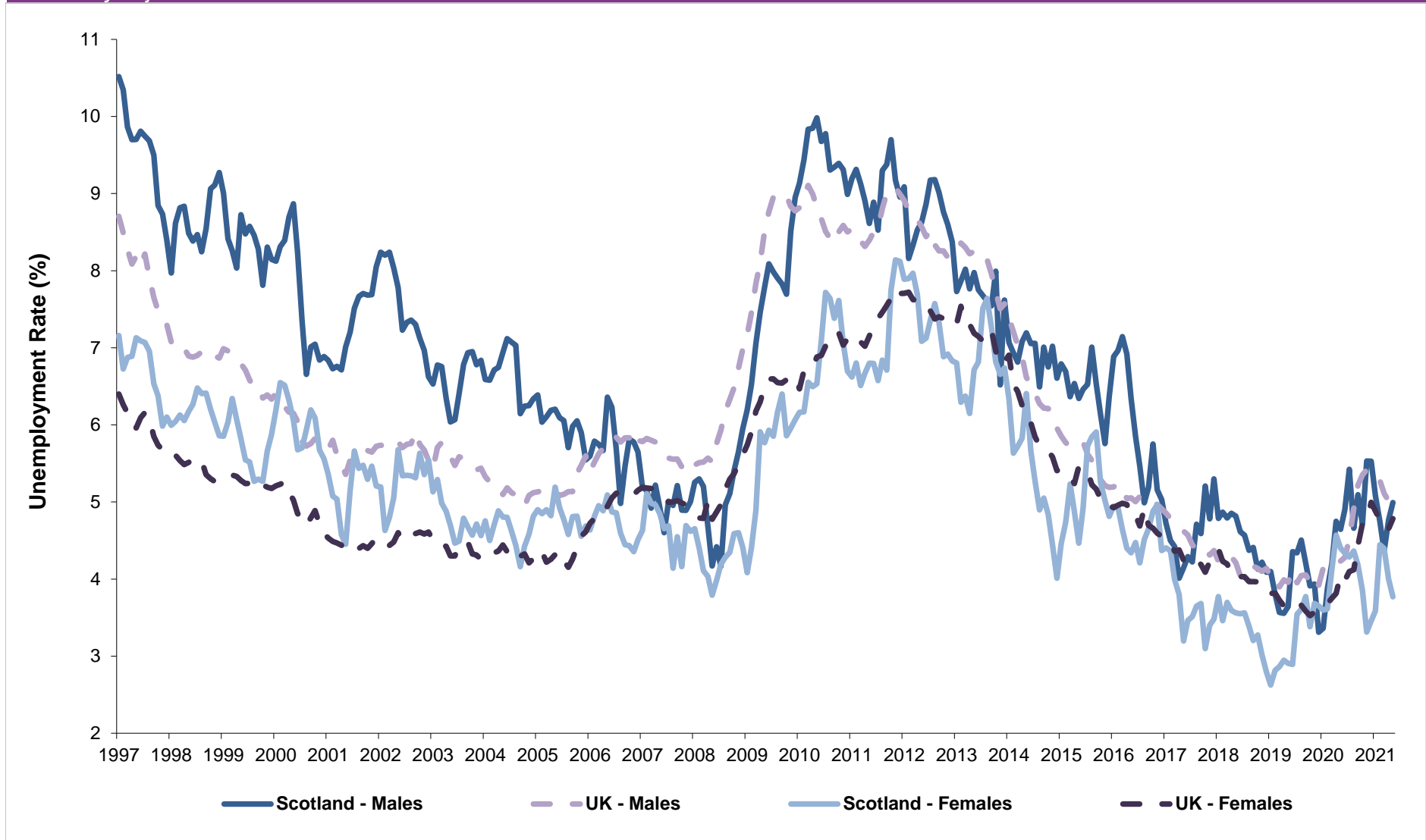
**IMPORTANT NOTE:** Labour Force Survey (LFS) estimates from January to March 2020 until February to April 2021 have been reweighted to new populations derived using growth rates from HMRC Real Time Information to allow for different trends during the COVID-19 pandemic. Quarterly and annual comparisons within this table are therefore based on estimates which may differ from those previously published. For further information, see Notes (page 44).

**Chart 1.11: Employment rate by gender (16-64), Scotland and UK, 1997-2021**  
*seasonally adjusted*



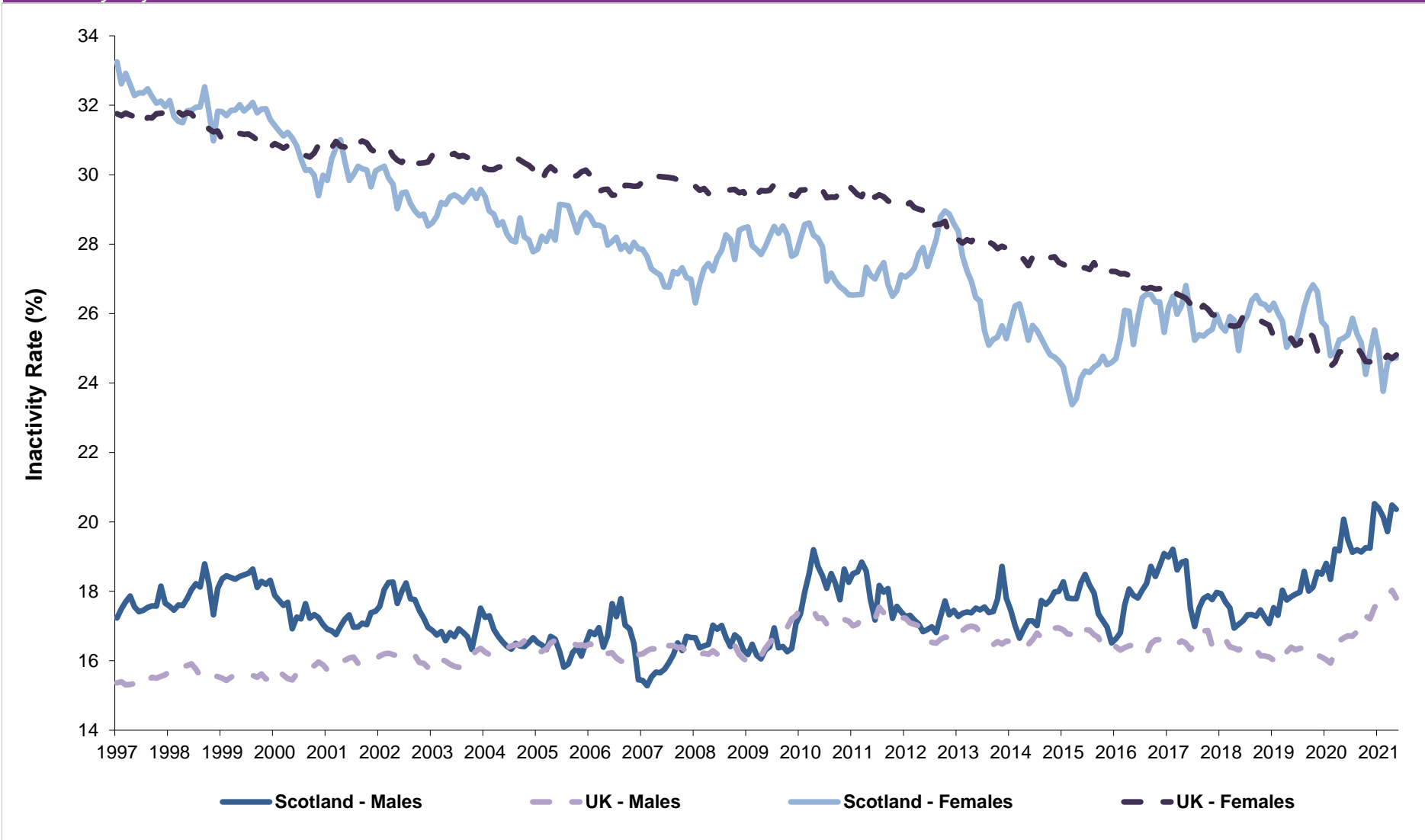
Source: Labour Force Survey, ONS

**Chart 1.12: Unemployment rate by gender (16+), Scotland and UK, 1997-2021**  
*seasonally adjusted*



Source: Labour Force Survey, ONS

**Chart 1.13: Inactivity rate by gender (16-64), Scotland, UK 1997-2021**  
*seasonally adjusted*



Source: Labour Force Survey, ONS

**Table 1.6a: Employment, ILO unemployment and inactivity rates by age group, Scotland and UK, Annual Population Survey: Jan 2020 - Dec 2020**

	Age Group	Scotland					UK				
		Rate (%)	change on year (%pt)	change on Jan 2010 - Dec 2010	Rate (%)	change on year (%pt)	change on Jan 2010 - Dec 2010				
Employment Rate	16-24	51.9	-6.0	↓	-3.6	↓	52.3	-1.8	↓	2.3	↑
	25-34	83.4	1.7	↑	5.3	↑	84.2	0.4	↑	6.5	↑
	35-49	82.6	-1.3	↓	1.0	↑	84.9	0.0	↔	4.1	↑
	50-64	69.4	-1.2	↓	5.3	↑	71.7	-0.6	↓	7.0	↑
	65+	8.8	0.1	↑	2.2	↑	10.5	-0.2	↓	2.4	↑
Unemployment Rate	16-24	13.5	5.2	↑	-4.9	↓	13.3	2.0	↑	-6.2	↓
	25-34	3.2	-0.6	↓	-5.5	↓	4.1	0.5	↑	-3.6	↓
	35-49	3.1	0.5	↑	-2.1	↓	3.0	0.5	↑	-2.3	↓
	50-64	2.9	0.6	↑	-1.3	↓	3.2	0.5	↑	-1.4	↓
	65+	*	*	-	*	-	1.9	0.3	↑	-0.5	↓
Inactivity Rate	16-24	40.0	3.2	↑	8.1	↑	39.6	0.6	↑	1.8	↑
	25-34	13.8	-1.2	↓	-0.6	↓	12.2	-0.9	↓	-3.7	↓
	35-49	14.8	0.9	↑	0.8	↑	12.4	-0.4	↓	-2.1	↓
	50-64	28.6	0.7	↑	-4.6	↓	25.9	0.2	↑	-6.3	↓
	65+	91.1	-0.1	↓	-2.2	↓	89.3	0.2	↑	-2.4	↓

Source: Annual Population Survey, ONS

\* data not available

\*\* Denominator = population in age group

\*\*\* Denominator = Economically active population in age group (where economically active is defined as those in employment plus those who are unemployed)

**Table 1.6b: Employment, ILO unemployment and inactivity rates by age group, Scotland and UK, Labour Force Survey: Mar-May 2021**  
Official Statistics - not seasonally adjusted

	Age Group	Scotland					UK				
		Rate (%)	Change on year (%pt)	Change on 2011 (%pt)	Rate (%)	Change on year (%pt)	Change on 2011 (%pt)				
Employment Rate**	16-24	55.2	2.5	↑	1.5	↑	50.0	-3.5	↓	0.5	↑
	25-34	81.7	-0.4	↓	2.2	↑	84.4	-0.5	↓	5.9	↑
	35-49	83.0	-1.0	↓	0.8	↑	85.1	0.0	↔	4.0	↑
	50-64	70.2	0.8	↑	5.4	↑	70.9	-1.1	↓	5.8	↑
	65+	9.4	1.2	↑	2.7	↑	10.6	-0.3	↓	1.6	↑
Unemployment Rate***	16-24	9.0	-3.7	↓	-10.9	↓	12.0	0.3	↑	-7.0	↓
	25-34	4.5	0.9	↑	-3.2	↓	3.9	0.5	↑	-3.9	↓
	35-49	3.6	0.2	↑	-1.2	↓	3.4	0.8	↑	-2.1	↓
	50-64	3.0	0.1	↑	-1.6	↓	3.6	1.0	↑	-1.2	↓
	65+	2.7	*	-	*	-	2.9	1.1	↑	1.0	↑
Inactivity Rate**	16-24	39.3	-0.3	↓	6.4	↑	43.2	3.8	↑	4.3	↑
	25-34	14.4	-0.4	↓	0.6	↑	12.1	0.0	↔	-2.7	↓
	35-49	13.9	0.9	↑	0.2	↑	12.0	-0.7	↓	-2.3	↓
	50-64	27.6	-0.9	↓	-4.4	↓	26.4	0.4	↑	-5.1	↓
	65+	90.3	-1.4	↓	-2.9	↓	89.1	0.2	↑	-1.8	↓

Source: Labour Force Survey, ONS

\* data not available

\*\* Denominator = population in age group

\*\*\* Denominator = Economically active population in age group (where economically active is defined as those in employment plus those who are unemployed).

**Quality indicator**

Shaded estimates are based on a small sample size. This may result in a less precise estimates, which should be used with caution.

Unshaded estimates are based on a larger sample size. This is likely to result in estimates of higher precision, although they will still be subject to some sampling variability.

**Note on data sources:** The Labour Force Survey (LFS) is a survey of households collected and published by the Office for National Statistics (ONS). Further information on reliability can be accessed in the ONS publication at: <https://www.ons.gov.uk/employmentandlabourmarket/peopleinwork/employmentandemployeetypes/methodologies/measuringandreportingreliabilityoflabourforcesurveyandannualpopulationsurveyestimates>

The LFS estimates in Table 1.6b are from the same source as the headline figures but due to the relatively small sample sizes and subsequent sampling variability, the figures should be used with caution and are designated as Official Statistics. The preferred source of labour market indicators by age band for regions/countries of the UK is the Annual Population Survey (APS).

The APS estimates are classified as National Statistics as they are based on a larger sample size, but are not as current as LFS estimates. Regional estimates for the unemployment rate maybe quite volatile, which needs to be allowed for when considering the pattern of change over time and sample sizes are also smaller for sub groups such as 16-24 year olds which can also affect volatility. Sampling variability information is published at:

<https://www.ons.gov.uk/employmentandlabourmarket/peopleinwork/employmentandemployeetypes/datasets/samplingvariabilityandrevisionsummaryforregionallabourmarketstatistics02>

**Table 2.1a: Employment, ILO unemployment and inactivity for 16-24 age group, Scotland and UK, Annual Population Survey (APS): Jan 2020 - Dec 2020**

	Level ('000)				Rate					
	Level	Change on year	change on Jan 2010 - Dec 2010	Rate (%)	Change on year (%pts)	change on Jan 2010 - Dec 2010				
<b>Employment*</b>										
Scotland	289	-38 ↓	-54 ↓	51.9	-6.0 ↓	-3.6 ↓				
UK	3,592	-143 ↓	-65 ↓	52.3	-1.8 ↓	2.3 ↑				
<b>ILO Unemployment**</b>										
Scotland	45	15 ↑	-32 ↓	13.5	5.2 ↑	-4.9 ↓				
UK	552	74 ↑	-333 ↓	13.3	2.0 ↑	-6.2 ↓				
<b>Inactivity*</b>										
Scotland	223	15 ↑	26 ↑	40.0	3.2 ↑	8.1 ↑				
UK	2,720	26 ↑	-48 ↓	39.6	0.6 ↑	1.8 ↑				

Source: Annual Population Survey (APS), ONS

Notes: \*denominator = 16-24 population; \*\* denominator = economically active population aged 16-24

**Table 2.1b: Employment, ILO unemployment and inactivity for 16-24 age group, Scotland and UK, Labour Force Survey (LFS): Mar-May 2021**

*not seasonally adjusted (Official Statistics)*

	Level ('000)				Rate					
	Level	Change on year	Change on 2011	Rate (%)	Change on year (%pts)	Change on 2011 (%pt)				
<b>Employment*</b>										
Scotland	303	8 ↑	-32 ↓	55.2	2.5 ↑	1.5 ↑				
UK	3,399	-277 ↓	-245 ↓	50.0	-3.5 ↓	0.5 ↑				
<b>ILO Unemployment**</b>										
Scotland	30	-13 ↓	-53 ↓	9.0	-3.7 ↓	-10.9 ↓				
UK	463	-26 ↓	-391 ↓	12.0	0.3 ↑	-7.0 ↓				
<b>Inactivity*</b>										
Scotland	216	-6 ↓	10 ↑	39.3	-0.3 ↓	6.4 ↑				
UK	2,939	232 ↑	74 ↑	43.2	3.8 ↑	4.3 ↑				

Source: Labour Force Survey (LFS), ONS

\*rate based on total population aged 16-24

\*\*rate=ILO unemployed/(employed+ ILO unemployed)

**Quality indicator**

Shaded estimates are based on a small sample size. This may result in a less precise estimates, which should be used with caution.

Unshaded estimates are based on a larger sample size. This is likely to result in estimates of higher precision, although they will still be subject to some sampling variability.

**Note on data sources:** The Labour Force Survey (LFS) is a survey of households collected and published by the Office for National Statistics (ONS). Further information on reliability can be accessed in the ONS publication at: <https://www.ons.gov.uk/employmentandlabourmarket/peopleinwork/employmentandemployeetypes/methodologies/measuringandreportingreliabilityoflabourforcesurveyandannualpopulationsurveyestimates>

The LFS estimates in Table 2.1b are from the same source as the headline figures but due to the relatively small sample sizes and subsequent sampling variability, the figures should be used with caution and are designated as Official Statistics. The preferred source of labour market indicators by age band for regions/countries of the UK is the Annual Population Survey (APS).

The APS estimates are classified as National Statistics as they are based on a larger sample size, but are not as current as LFS estimates. Regional estimates for the unemployment rate maybe quite volatile, which needs to be allowed for when considering the pattern of change over time and sample sizes are also smaller for sub groups such as 16-24 year olds which can also affect volatility.

Sampling variability information is published at:

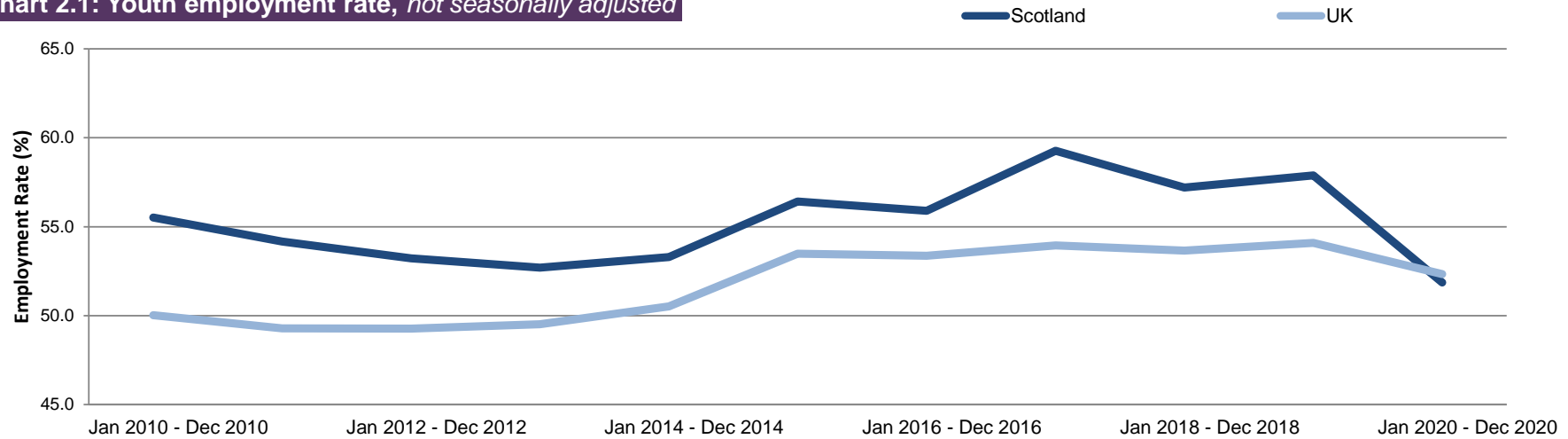
<https://www.ons.gov.uk/employmentandlabourmarket/peopleinwork/employmentandemployeetypes/datasets/samplingvariabilityandrevisionsummaryforregionallabourmarketstatistics02>

**IMPORTANT NOTE:** Labour Force Survey (LFS) estimates from January to March 2020 until February to April 2021 have been reweighted to new populations derived using growth rates from HMRC Real Time Information to allow for different trends during the COVID-19 pandemic. Annual comparisons within this table are therefore based on estimates which may differ from those previously published. Annual Population Survey (APS) estimates are still currently weighted to official population projections and therefore based on demographic trends that pre-date the COVID-19 pandemic but will be reweighted using the same methodology as the LFS later in the year. Rates published from the APS remain robust; however, levels and changes in levels should be used with caution. For further information, see Notes (page 44).

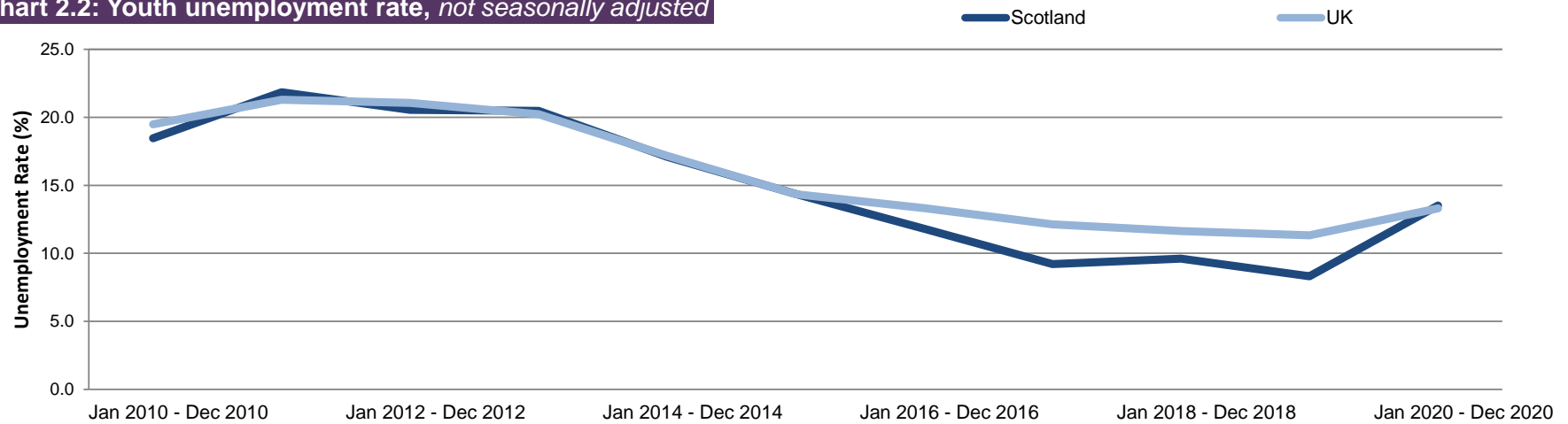


**Charts 2.1 and 2.2: Youth employment and unemployment, Scotland and UK (APS)**

**Chart 2.1: Youth employment rate, *not seasonally adjusted***



**Chart 2.2: Youth unemployment rate, *not seasonally adjusted***



Source: Annual Population Survey, ONS

**Table 2.2: Employment, ILO unemployment and inactivity for 16-24 age group by gender, Scotland and UK (APS), Jan 2020 - Dec 2020**

Scotland										
	Level ('000)					Rate				
	Level	Change on year		change on Jan 2010 - Dec 2010		Rate (%)	Change on year (%pts)		change on Jan 2010 - Dec 2010	
<b>Employment*</b>										
Male	147	-16	↓	-26	↓	52.4	-4.9	↓	-3.7	↓
Female	142	-22	↓	-28	↓	51.3	-7.1	↓	-3.7	↓
<b>ILO Unemployment**</b>										
Male	24	6	↑	-22	↓	14.1	4.1	↑	-7.0	↓
Female	21	9	↑	-11	↓	12.9	6.3	↑	-2.7	↓
<b>Inactivity*</b>										
Male	109	6	↑	20	↑	39.0	2.7	↑	10.0	↑
Female	114	8	↑	6	↑	41.1	3.6	↑	6.2	↑
UK										
	Level ('000)					Rate				
	Level	Change on year		change on Jan 2010 - Dec 2010		Rate (%)	Change on year (%pts)		change on Jan 2010 - Dec 2010	
<b>Employment*</b>										
Male	1,814	-84	↓	-52	↓	51.7	-2.0	↓	0.9	↑
Female	1,779	-60	↓	-13	↓	53.0	-1.5	↓	3.7	↑
<b>ILO Unemployment**</b>										
Male	309	21	↑	-218	↓	14.6	1.4	↑	-7.5	↓
Female	242	53	↑	-116	↓	12.0	2.7	↑	-4.7	↓
<b>Inactivity*</b>										
Male	1,384	40	↑	103	↑	39.5	1.4	↑	4.6	↑
Female	1,336	-14	↓	-152	↓	39.8	-0.2	↓	-1.1	↓

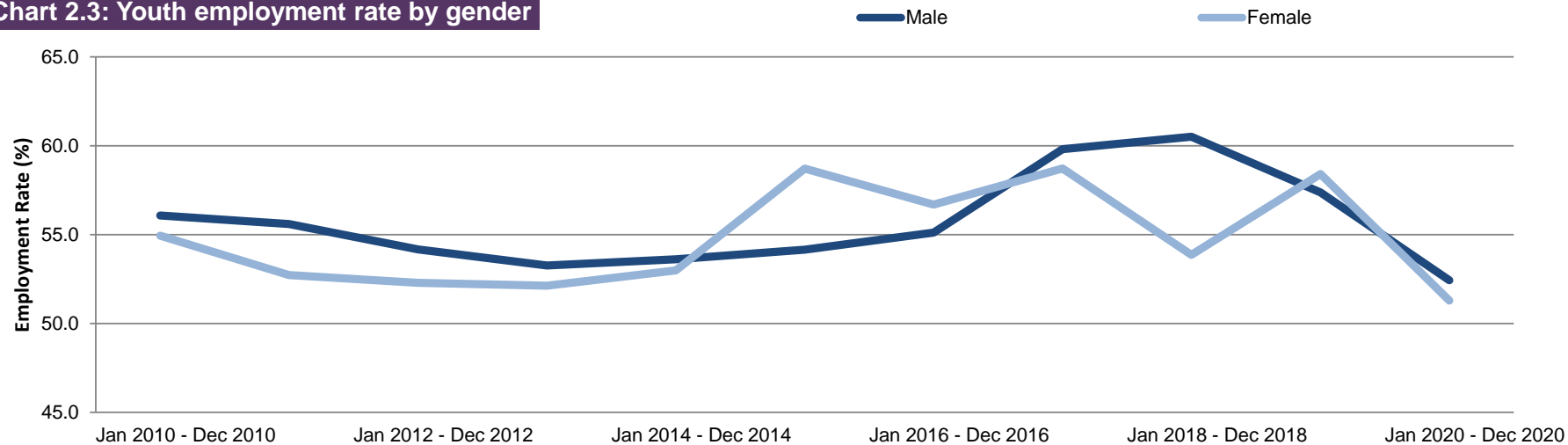
Source: Annual Population Survey, ONS

Notes: \*denominator = 16-24 population; \*\* denominator = economically active population aged 16-24

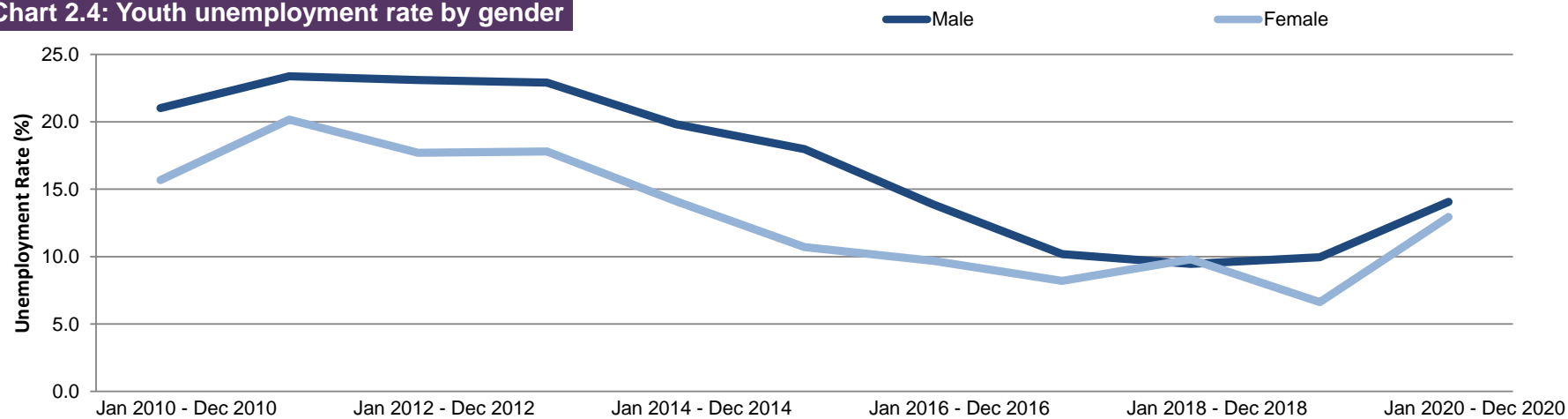
**IMPORTANT NOTE:** Annual Population Survey (APS) responses are still weighted to official population projections and are based on demographic trends that pre-date the COVID-19 pandemic. ONS are carrying out a reweighting process using growth rates from HMRC Real Time Information to allow for different trends during the COVID-19 pandemic. Current APS estimates will be reweighted using this methodology later in the year. Rates published from the APS remain robust; however, levels and changes in levels should be used with caution. This will particularly affect estimates for country of birth, nationality, ethnicity and disability. For further information, see Notes (page 44).

**Charts 2.3 and 2.4: Youth employment and unemployment by gender, Scotland (APS)**

**Chart 2.3: Youth employment rate by gender**



**Chart 2.4: Youth unemployment rate by gender**



Source: Annual Population Survey, ONS

**Table 2.3: Youth Unemployment (16-24) by Government Office Region (LFS), Mar-May 2021**  
not seasonally adjusted (Official Statistics)

	Level (000's)	change on year	change on 2011	Rate (%)	%pt change on year	%pt change on 2011
North East	20	-12 ↓	-17 ↓	12.1	-3.6 ↓	-7.6 ↓
North West	55	1 ↑	-62 ↓	12.6	1.2 ↑	-10.0 ↓
Yorkshire and The Humber	45	13 ↑	-23 ↓	12.9	4.3 ↑	-4.9 ↓
East Midlands	38	-11 ↓	-27 ↓	12.7	-1.7 ↓	-6.2 ↓
West Midlands	58	2 ↑	-33 ↓	15.7	-0.4 ↓	-7.4 ↓
East	26	-16 ↓	-44 ↓	7.7	-3.4 ↓	-8.8 ↓
London	68	2 ↑	-50 ↓	15.9	1.5 ↑	-7.2 ↓
South East	60	11 ↑	-21 ↓	11.5	3.0 ↑	-2.0 ↓
South West	35	-12 ↓	-21 ↓	10.2	-2.7 ↓	-4.6 ↓
Wales	20	9 ↑	-24 ↓	10.6	4.6 ↑	-10.1 ↓
Northern Ireland	8	2 ↑	-16 ↓	9.2	3.2 ↑	-9.4 ↓
<b>Scotland</b>	<b>30</b>	<b>-13 ↓</b>	<b>-53 ↓</b>	<b>9.0</b>	<b>-3.7 ↓</b>	<b>-10.9 ↓</b>
<b>United Kingdom</b>	<b>463</b>	<b>-26 ↓</b>	<b>-391 ↓</b>	<b>12.0</b>	<b>0.3 ↑</b>	<b>-7.0 ↓</b>
England	405	-23 ↓	-298 ↓	12.5	0.3 ↑	-6.3 ↓

Source: Labour Force Survey, ONS

**Table 2.4: Youth Employment (16-24) by UK Countries and Regions (LFS), Mar-May 2021**  
not seasonally adjusted (Official Statistics)

	Level (000's)	change on year	change on 2011	Rate (%)	%pt change on year	%pt change on 2011
North East	143	-28 ↓	-6 ↓	50.3	-8.9 ↓	3.4 ↑
North West	386	-40 ↓	-19 ↓	51.3	-4.6 ↓	3.4 ↑
Yorkshire and The Humber	301	-41 ↓	-11 ↓	49.8	-6.2 ↓	1.9 ↑
East Midlands	263	-27 ↓	-18 ↓	51.8	-4.7 ↓	-0.8 ↓
West Midlands	312	21 ↑	8 ↑	49.3	3.8 ↑	3.6 ↑
East	311	-28 ↓	-41 ↓	53.9	-4.4 ↓	-2.0 ↓
London	358	-33 ↓	-35 ↓	38.9	-3.5 ↓	-0.8 ↓
South East	463	-64 ↓	-59 ↓	51.6	-6.6 ↓	-3.8 ↓
South West	310	-11 ↓	-12 ↓	56.2	-1.4 ↓	0.3 ↑
Wales	172	-14 ↓	3 ↑	51.8	-3.2 ↓	5.9 ↑
Northern Ireland	79	-21 ↓	-24 ↓	40.2	-10.0 ↓	-6.2 ↓
<b>Scotland</b>	<b>303</b>	<b>8 ↑</b>	<b>-32 ↓</b>	<b>55.2</b>	<b>2.5 ↑</b>	<b>1.5 ↑</b>
<b>United Kingdom</b>	<b>3,399</b>	<b>-277 ↓</b>	<b>-245 ↓</b>	<b>50.0</b>	<b>-3.5 ↓</b>	<b>0.5 ↑</b>
England	2,845	-251 ↓	-192 ↓	49.7	-3.9 ↓	0.3 ↑

Source: Labour Force Survey, ONS

**Quality indicator**

Shaded estimates are based on a small sample size. This may result in a less precise estimates, which should be used with caution.

Unshaded estimates are based on a larger sample size. This is likely to result in estimates of higher precision, although they will still be subject to some sampling variability.

**Note on data sources:** The Labour Force Survey (LFS) is a survey of households collected and published by the Office for National Statistics (ONS). Further information on reliability can be accessed in the ONS publication at: <https://www.ons.gov.uk/employmentandlabourmarket/peopleinwork/employmentandemployeetypes/methodologies/measuringandreportingreliabilityoflabourforcesurveyandannualpopulationsurveyestimates>

The LFS estimates are from the same source as the headline figures but due to the relatively small sample sizes and subsequent sampling variability, the figures should be used with caution and are designated as Official Statistics. The preferred source of labour market indicators by age band for regions/countries of the UK is the Annual Population Survey (APS). The APS estimates are available in the headline indicator tables (HI01 to HI12) of the ONS Labour market in the regions of the UK release:

<https://www.ons.gov.uk/employmentandlabourmarket/peopleinwork/employmentandemployeetypes/bulletins/regionallabourmarket/previousReleases>

**IMPORTANT NOTE:** Labour Force Survey (LFS) estimates from January to March 2020 until February to April 2021 have been reweighted to new populations derived using growth rates from HMRC Real Time Information to allow for different trends during the COVID-19 pandemic. Quarterly and annual comparisons within this table are therefore based on estimates which may differ from those previously published. For further information, see Notes (page 44).

**Table 3.1a: Employment rates and levels of the population aged 16-64 by disability status, Scotland 2014-2020 (APS)**

	Equality Act Disabled Employment		Not Equality Act Disabled Employment		Disabled Employment Rate Gap (%pt)
	Rate	Level (000s)	Rate	Level (000s)	
Jan 2014 - Dec 2014	41.5	251	79.4	2,213	37.9
Jan 2015 - Dec 2015	41.9	263	80.3	2,229	38.4
Jan 2016 - Dec 2016	42.8	279	80.2	2,217	37.4
Jan 2017 - Dec 2017	45.3	297	81.2	2,245	35.9
Jan 2018 - Dec 2018	45.6	307	81.1	2,231	35.5
Jan 2019 - Dec 2019	49.0	349	81.6	2,215	32.6
Jan 2020 - Dec 2020†	46.9	-	80.6	-	33.7
<i>Change on year</i>	-2.1	-	-1.0	-	1.1

Source: Annual Population Survey, ONS

**Table 3.1b: Employment rates and levels of the population aged 16-64 by disability status, Scotland 2014-2021 (LFS)**

*not seasonally adjusted*

	Equality Act Disabled Employment		Not Equality Act Disabled Employment		Disabled Employment Rate Gap (%pt)
	Rate	Level (000s)	Rate	Level (000s)	
Jan-Mar 2014	41.9	242	79.6	2,246	37.7
Jan-Mar 2015	43.9	261	81.0	2,278	37.1
Jan-Mar 2016	42.4	261	79.9	2,236	37.5
Jan-Mar 2017	41.7	268	81.4	2,266	39.7
Jan-Mar 2018	47.2	301	81.1	2,254	33.9
Jan-Mar 2019	45.5	300	82.1	2,273	36.6
Jan-Mar 2020	47.8	351	82.0	2,201	34.2
Jan-Mar 2021	48.9	386	81.8	2,150	32.9
<i>Change on year</i>	1.1	35	-0.2	-51	-1.3

Source: Labour Force Survey, ONS

Questions used to derive current disability status of a person were changed in the April-June 2013 dataset. Subsequent datasets are therefore not directly comparable to equivalent periods in earlier years. See **Notes (p44)** for further information.

Information is shown from the Labour Force Survey (LFS) and the Annual Population Survey (APS) for the same measure. Although the LFS is more timely, the APS is based on a larger sample size and therefore has a higher degree of reliability.

**IMPORTANT NOTE:** Labour Force Survey (LFS) estimates from January to March 2020 until February to April 2021 have been reweighted to new populations derived using growth rates from HMRC Real Time Information to allow for different trends during the COVID-19 pandemic. Annual comparisons within this table are therefore based on estimates which may differ from those previously published.

† Annual Population Survey (APS) estimates are still currently weighted to official population projections and therefore based on demographic trends that pre-date the COVID-19 pandemic but will be reweighted using the same methodology as the LFS later in the year. Rates published from the APS remain robust; however, levels and changes in levels should be used with caution. This will particularly affect estimates for country of birth, nationality, ethnicity and disability. Consequently recent level estimates for these measures have been temporarily suspended until they are reweighted to better account for recent population movements. For further information, see Notes (page 44).

**Table 3.2: Employment rates and levels of the population aged 16-64 by ethnicity and gender, Scotland, 2011 - 2020**  
*not seasonally adjusted*

**All**

	White Employment		Minority Ethnic Employment		Ethnicity Employment Rate Gap (%pt)
	Rate	Level (000s)	Rate	Level (000s)	
Jan 2011 - Dec 2011	70.8	2,348	61.4	72	9.4
Jan 2012 - Dec 2012	71.0	2,332	59.0	80	12.0
Jan 2013 - Dec 2013	71.3	2,351	56.0	67	15.4
Jan 2014 - Dec 2014	73.2	2,386	60.0	90	13.2
Jan 2015 - Dec 2015	73.7	2,401	58.9	85	14.8
Jan 2016 - Dec 2016	73.8	2,401	57.5	98	16.3
Jan 2017 - Dec 2017	75.0	2,444	60.4	107	14.5
Jan 2018 - Dec 2018	75.1	2,453	55.4	97	19.7
Jan 2019 - Dec 2019	75.7	2,460	59.3	115	16.4
Jan 2020 - Dec 2020†	74.0	-	64.1	-	10.0
<i>Change on year</i>	-1.7	-	4.7	-	-6.5

**Male**

	White Employment		Minority Ethnic Employment		Ethnicity Employment Rate Gap (%pt)
	Rate	Level (000s)	Rate	Level (000s)	
Jan 2011 - Dec 2011	74.9	1,211	72.9	45	2.1
Jan 2012 - Dec 2012	74.6	1,196	72.1	49	2.5
Jan 2013 - Dec 2013	74.8	1,202	63.8	39	11.0
Jan 2014 - Dec 2014	76.7	1,221	72.6	53	4.1
Jan 2015 - Dec 2015	76.3	1,214	73.3	51	3.0
Jan 2016 - Dec 2016	77.1	1,228	71.5	58	5.7
Jan 2017 - Dec 2017	78.1	1,243	71.9	63	6.2
Jan 2018 - Dec 2018	78.5	1,256	67.3	55	11.2
Jan 2019 - Dec 2019	78.5	1,250	69.0	61	9.5
Jan 2020 - Dec 2020†	76.2	-	74.1	-	2.1
<i>Change on year</i>	-2.3	-	5.1	-	-7.4

**Female**

	White Employment		Minority Ethnic Employment		Ethnicity Employment Rate Gap (%pt)
	Rate	Level (000s)	Rate	Level (000s)	
Jan 2011 - Dec 2011	66.9	1,136	48.9	27	18.0
Jan 2012 - Dec 2012	67.6	1,136	45.6	31	21.9
Jan 2013 - Dec 2013	68.0	1,149	47.7	28	20.4
Jan 2014 - Dec 2014	69.8	1,165	48.1	37	21.8
Jan 2015 - Dec 2015	71.2	1,187	45.2	33	26.0
Jan 2016 - Dec 2016	70.6	1,173	44.8	40	25.7
Jan 2017 - Dec 2017	72.0	1,200	49.4	44	22.6
Jan 2018 - Dec 2018	71.8	1,197	45.0	42	26.8
Jan 2019 - Dec 2019	73.1	1,210	51.1	54	22.0
Jan 2020 - Dec 2020†	72.0	-	54.9	-	17.1
<i>Change on year</i>	-1.1	-	3.7	-	-4.9

Source: Annual Population Survey, ONS (Jan-Dec datasets)

† **IMPORTANT NOTE:** Annual Population Survey (APS) responses are still weighted to official population projections and are based on demographic trends that pre-date the COVID-19 pandemic. ONS are carrying out a reweighting process using growth rates from HMRC Real Time Information to allow for different trends during the COVID-19 pandemic. Current APS estimates will be reweighted using this methodology later in the year. Rates published from the APS remain robust; however, levels and changes in levels should be used with caution. This will particularly affect estimates for country of birth, nationality, ethnicity and disability. Consequently recent level estimates for these measures have been temporarily suspended until they are reweighted to better account for recent population movements. For further information, see Notes (page 44).

**Table 3.3: Employment patterns, Scotland, Mar-May 2021, (Thousands)**  
*not seasonally adjusted*

	Mar-May 2021 (000s)	change on Mar- May 2020 (000s)		change on Mar- May 2011 (000s)	
Total‡	2,633	11	↑	128	↑
Employees‡	2,365	85	↑	154	↑
Self employed‡	258	-72	↓	-23	↓
Unpaid family workers	7	4	↑	2	↑
Government-supported training and employment programmes	4	-7	↓	-4	↓
Full-time workers	1,958	35	↑	154	↑
Part-time workers	671	-22	↓	-26	↓
Workers with second jobs	87	-8	↓	-16	↓
Temporary workers	120	-2	↓	-16	↓
<b>All males in employment</b>					
Total‡	1,322	-6	↓	30	↑
Employees‡	1,152	34	↑	58	↑
Self employed‡	166	-37	↓	-26	↓
Unpaid family workers	3	*	▪	*	▪
Government-supported training and employment programmes	*	*	▪	*	▪
Full-time workers	1,153	3	↑	34	↑
Part-time workers	164	-9	↓	-5	↓
Workers with second jobs	26	-11	↓	-18	↓
Temporary workers	60	1	↑	-7	↓
<b>All females in employment</b>					
Total‡	1,312	17	↑	98	↑
Employees‡	1,213	51	↑	96	↑
Self employed‡	92	-35	↓	2	↑
Unpaid family workers	4	2	↑	1	↑
Government-supported training and employment programmes	3	0	↔	0	↔
Full-time workers	804	32	↑	120	↑
Part-time workers	507	-13	↓	-21	↓
Workers with second jobs	61	3	↑	2	↑
Temporary workers	60	-3	↓	-9	↓

Source: Labour Force Survey, ONS

‡ Includes people who did not state whether they worked part-time or full-time.

\* Estimate suppressed as below reliability threshold.

#### Quality indicator

Shaded estimates are based on a small sample size. This may result in a less precise estimates, which should be used with caution.

Unshaded estimates are based on a larger sample size. This is likely to result in estimates of higher precision, although they will still be subject to some sampling variability.

**IMPORTANT NOTE:** Labour Force Survey (LFS) estimates from January to March 2020 until February to April 2021 have been reweighted to new populations derived using growth rates from HMRC Real Time Information to allow for different trends during the COVID-19 pandemic. Quarterly and annual comparisons within this table are therefore based on estimates which may differ from those previously published. For further information, see Notes (page 44).

**Table 3.4: Underemployment, Scotland and UK, 2010-2020**  
*not seasonally adjusted*

	Scotland		UK	
	Rate (%)	Level (000s)	Rate (%)	Level (000s)
Jan 2010 - Dec 2010	9.4	232	9.3	2,678
Jan 2011 - Dec 2011	9.9	243	9.7	2,782
Jan 2012 - Dec 2012	10.0	246	10.0	2,897
Jan 2013 - Dec 2013	9.6	237	10.0	2,937
Jan 2014 - Dec 2014	8.6	216	9.2	2,749
Jan 2015 - Dec 2015	9.2	234	8.6	2,651
Jan 2016 - Dec 2016	8.4	214	8.1	2,521
Jan 2017 - Dec 2017	8.0	209	7.8	2,467
Jan 2018 - Dec 2018	7.4	194	6.9	2,199
Jan 2019 - Dec 2019	7.1	187	7.1	2,272
Jan 2020 - Dec 2020†	8.1	210	7.6	2,451
<i>change on year (%pt for rate)</i>	1.0	22	0.6	179
<i>change on Jan 2010 - Dec 2010 (%pt for rate)</i>	-1.4	-22	-1.7	-226

Source: Annual Population Survey, ONS

Notes:

1 - Levels and rates based on working population aged 16 and over

2 - Underemployment rate based on those in employment (excludes those who did not respond to underemployment questions)

3 - Underemployment includes:

- those looking for more hours in their current role at same rate of pay
- those looking for an additional job
- those looking for a replacement job with more hours than their current job.

† **IMPORTANT NOTE:** Annual Population Survey (APS) responses are still weighted to official population projections and are based on demographic trends that pre-date the COVID-19 pandemic. ONS are carrying out a reweighting process using growth rates from HMRC Real Time Information to allow for different trends during the COVID-19 pandemic. Current APS estimates will be reweighted using this methodology later in the year. Rates published from the APS remain robust; however, levels and changes in levels should be used with caution. This will particularly affect estimates for country of birth, nationality, ethnicity and disability. For further information, see Notes (page 44).



**Table 3.5: Employment rates by highest qualification held and gender, Scotland and UK, Jan 2020 - Dec 2020**  
*not seasonally adjusted*

	Scotland			UK		
	Jan 2020 - Dec 2020	Change on year (%pt)		Jan 2020 - Dec 2020	Change on year (%pt)	
<b>All</b>						
Degree level and above	84.1	-0.2	↓	86.1	-0.4	↓
SVQ 4	79.1	-1.2	↓	80.8	-0.4	↓
SVQ 3	70.8	-3.2	↓	75.1	-0.9	↓
SVQ 2	64.7	-3.4	↓	67.3	-2.2	↓
SVQ 1	49.6	-5.9	↓	62.1	-2.3	↓
Other qualification	69.6	-5.5	↓	74.4	-0.7	↓
No qualifications	46.2	-5.1	↓	43.3	-2.6	↓
<b>Males</b>						
Degree level and above	85.6	-0.7	↓	88.6	-0.6	↓
SVQ 4	83.5	0.1	↑	84.6	-0.7	↓
SVQ 3	75.0	-4.3	↓	78.2	-1.5	↓
SVQ 2	67.9	-3.9	↓	71.7	-2.4	↓
SVQ 1	53.5	-6.0	↓	67.4	-4.1	↓
Other qualification	78.0	-3.7	↓	81.5	-3.8	↓
No qualifications	48.1	-5.1	↓	50.4	-3.6	↓
<b>Females</b>						
Degree level and above	82.8	0.2	↑	83.9	-0.2	↓
SVQ 4	75.5	-2.3	↓	77.5	-0.3	↓
SVQ 3	65.5	-1.6	↓	71.5	0.0	↔
SVQ 2	62.0	-2.9	↓	63.3	-2.1	↓
SVQ 1	45.1	-6.7	↓	55.9	-0.7	↓
Other qualification	60.4	-6.6	↓	65.0	2.7	↑
No qualifications	44.0	-5.3	↓	35.0	-1.9	↓

Source: Annual Population Survey, ONS

† **IMPORTANT NOTE:** Annual Population Survey (APS) responses are still weighted to official population projections and are based on demographic trends that pre-date the COVID-19 pandemic. ONS are carrying out a reweighting process using growth rates from HMRC Real Time Information to allow for different trends during the COVID-19 pandemic. Current APS estimates will be reweighted using this methodology later in the year. Rates published from the APS remain robust; however, levels and changes in levels should be used with caution. This will particularly affect estimates for country of birth, nationality, ethnicity and disability. For further information, see Notes (page 44).

**Table 4.1: Unemployment by duration, Annual Population Survey, Jan 2020 - Dec 2020**  
*not seasonally adjusted*

<b>Scotland</b>	<b>Level (000s)</b>	<b>Change on year</b>		<b>% Change on year</b>	
Less than 6 months	71	16	↑	28.2	↑
6 months and less than 12 months	17	5	↑	40.3	↑
1 year and less than 2 years	12	-1	↓	-8.9	↓
2 years or more	17	2	↑	12.2	↑

<b>UK</b>	<b>Level (000s)</b>	<b>Change on year</b>		<b>% Change on year</b>	
Less than 6 months	991	193	↑	24.1	↑
6 months and less than 12 months	233	43	↑	22.8	↑
1 year and less than 2 years	149	-14	↓	-8.7	↓
2 years or more	161	7	↑	4.5	↑

Source: Annual Population Survey, ONS

Note: Levels based on persons aged 16 and over

**IMPORTANT NOTE:** Annual Population Survey (APS) responses are still weighted to official population projections and are based on demographic trends that pre-date the COVID-19 pandemic. ONS are carrying out a reweighting process using growth rates from HMRC Real Time Information to allow for different trends during the COVID-19 pandemic. Current APS estimates will be reweighted using this methodology later in the year. Rates published from the APS remain robust; however, levels and changes in levels should be used with caution. This will particularly affect estimates for country of birth, nationality, ethnicity and disability. For further information, see Notes (page 44).

**Table 4.2: Model-based unemployment levels and rates by local authority**  
*not seasonally adjusted*

	Jan 2020-Dec 2020		Change on year			Change on Jan 2010-Dec 2010				
	Rate	Level	Rate (%pt)	Level Change		Rate (%pt)	Level Change			
Aberdeen City	4.5	5,500	1.4	↑	1,400	↑	-0.6	↓	-1,000	↓
Aberdeenshire	2.8	4,000	0.5	↑	700	↑	-0.8	↓	-1,000	↓
Angus	3.9	2,100	0.7	↑	300	↑	-2.7	↓	-1,700	↓
Argyll and Bute	3.4	1,400	0.5	↑	200	↑	-2.8	↓	-1,300	↓
City of Edinburgh	3.9	11,100	1.3	↑	3,900	↑	-2.6	↓	-4,900	↓
Clackmannanshire	4.7	1,200	1.4	↑	400	↑	-2.8	↓	-900	↓
Dumfries and Galloway	4.1	2,600	0.9	↑	400	↑	-1.8	↓	-1,800	↓
Dundee City	5.5	4,000	0.1	↑	200	↑	-3.7	↓	-2,900	↓
East Ayrshire	5.2	3,000	0.7	↑	300	↑	-3.8	↓	-2,600	↓
East Dunbartonshire	3.2	1,700	0.6	↑	300	↑	-2.9	↓	-1,500	↓
East Lothian	4.1	2,200	1.4	↑	700	↑	-2.8	↓	-1,200	↓
East Renfrewshire	3.5	1,600	0.8	↑	400	↑	-2.5	↓	-1,100	↓
Falkirk	4.4	3,700	0.7	↑	700	↑	-3.4	↓	-2,500	↓
Fife	4.8	8,500	0.7	↑	1,200	↑	-3.8	↓	-7,400	↓
Glasgow City	5.3	17,300	0.6	↑	2,800	↑	-6.6	↓	-16,400	↓
Highland	3.2	3,900	0.4	↑	600	↑	-1.4	↓	-1,800	↓
Inverclyde	5.2	1,800	0.4	↑	100	↑	-3.0	↓	-1,600	↓
Midlothian	3.6	1,700	0.9	↑	400	↑	-3.8	↓	-1,400	↓
Moray	3.6	1,800	0.4	↑	200	↑	-1.0	↓	-500	↓
Na h-Eileanan Siar	3.2	400	0.8	↑	100	↑	-3.3	↓	-400	↓
North Ayrshire	5.3	3,100	0.0	↔	-200	↓	-6.5	↓	-4,400	↓
North Lanarkshire	5.3	8,800	1.2	↑	1,700	↑	-5.1	↓	-8,900	↓
Orkney Islands	2.7	300	0.8	↑	100	↑	-0.6	↓	-100	↓
Perth and Kinross	3.7	2,800	1.4	↑	900	↑	-1.6	↓	-1,000	↓
Renfrewshire	4.3	4,000	0.6	↑	600	↑	-4.5	↓	-3,600	↓
Scottish Borders	3.3	1,900	0.3	↑	200	↑	-2.8	↓	-1,400	↓
Shetland Islands	2.5	300	0.3	↑	0	↔	-1.0	↓	-200	↓
South Ayrshire	4.9	2,500	1.2	↑	600	↑	-3.9	↓	-2,200	↓
South Lanarkshire	4.2	6,900	1.0	↑	1,800	↑	-3.5	↓	-5,500	↓
Stirling	3.5	1,600	-0.3	↓	-200	↓	-3.6	↓	-1,500	↓
West Dunbartonshire	5.0	2,200	0.6	↑	200	↑	-5.4	↓	-2,400	↓
West Lothian	4.0	3,800	1.1	↑	1,000	↑	-3.1	↓	-2,800	↓
<b>Scotland</b>	<b>4.3</b>	<b>117,500</b>	<b>0.8</b>	<b>↑</b>	<b>21,700</b>	<b>↑</b>	<b>-3.4</b>	<b>↓</b>	<b>-88,000</b>	<b>↓</b>

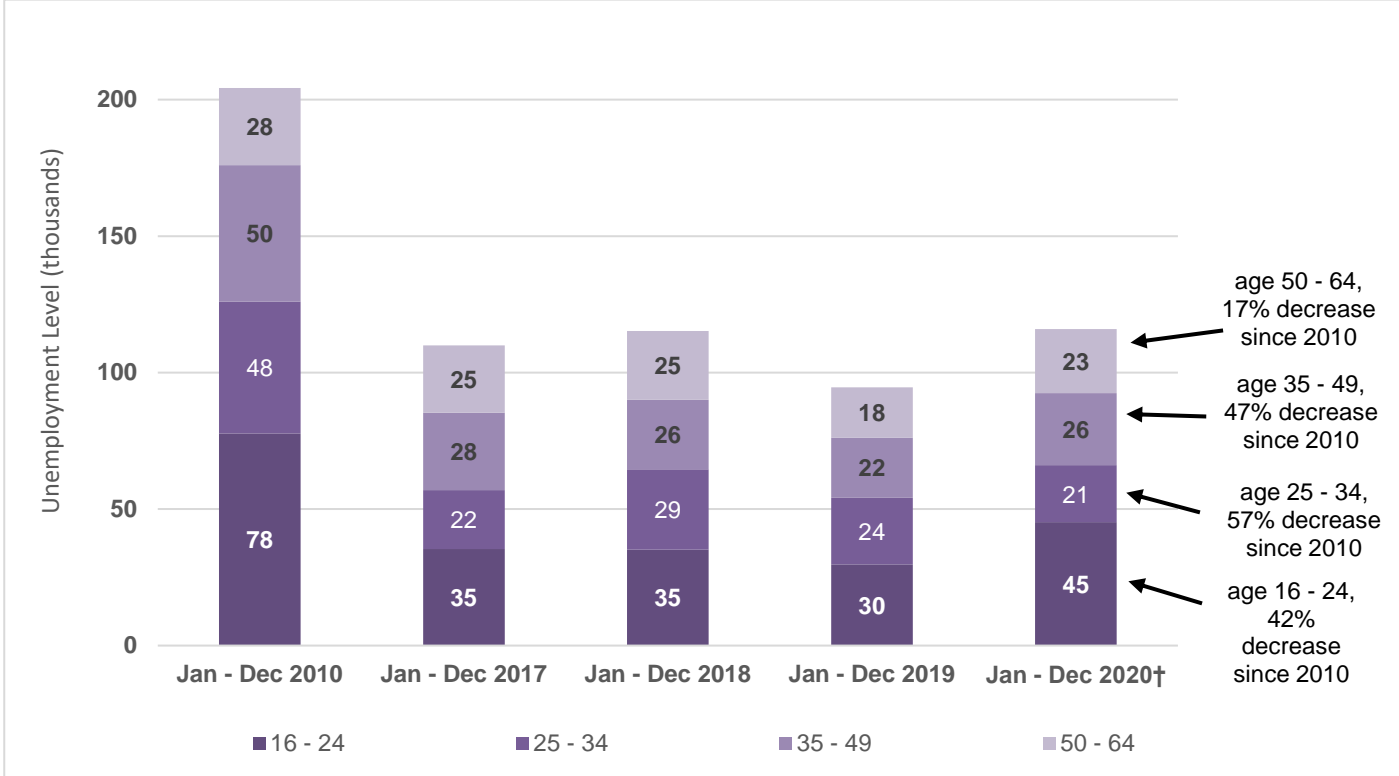
Sources: Annual Population Survey (ONS), Claimant Count (ONS)

Notes:

1. Levels rounded to the nearest hundred.
2. Proportions are calculated on unrounded figures.
3. Totals may not equal the sum of individual parts due to rounding.

**IMPORTANT NOTE:** Annual Population Survey (APS) responses are still weighted to official population projections and are based on demographic trends that pre-date the COVID-19 pandemic. ONS are carrying out a reweighting process using growth rates from HMRC Real Time Information to allow for different trends during the COVID-19 pandemic. Current APS estimates will be reweighted using this methodology later in the year. Rates published from the APS remain robust; however, levels and changes in levels should be used with caution. This will particularly affect estimates for country of birth, nationality, ethnicity and disability. For further information, see Notes (page 44).

**Chart 4.1: ILO unemployment levels by age-group (16-64), Scotland**  
*not seasonally adjusted*

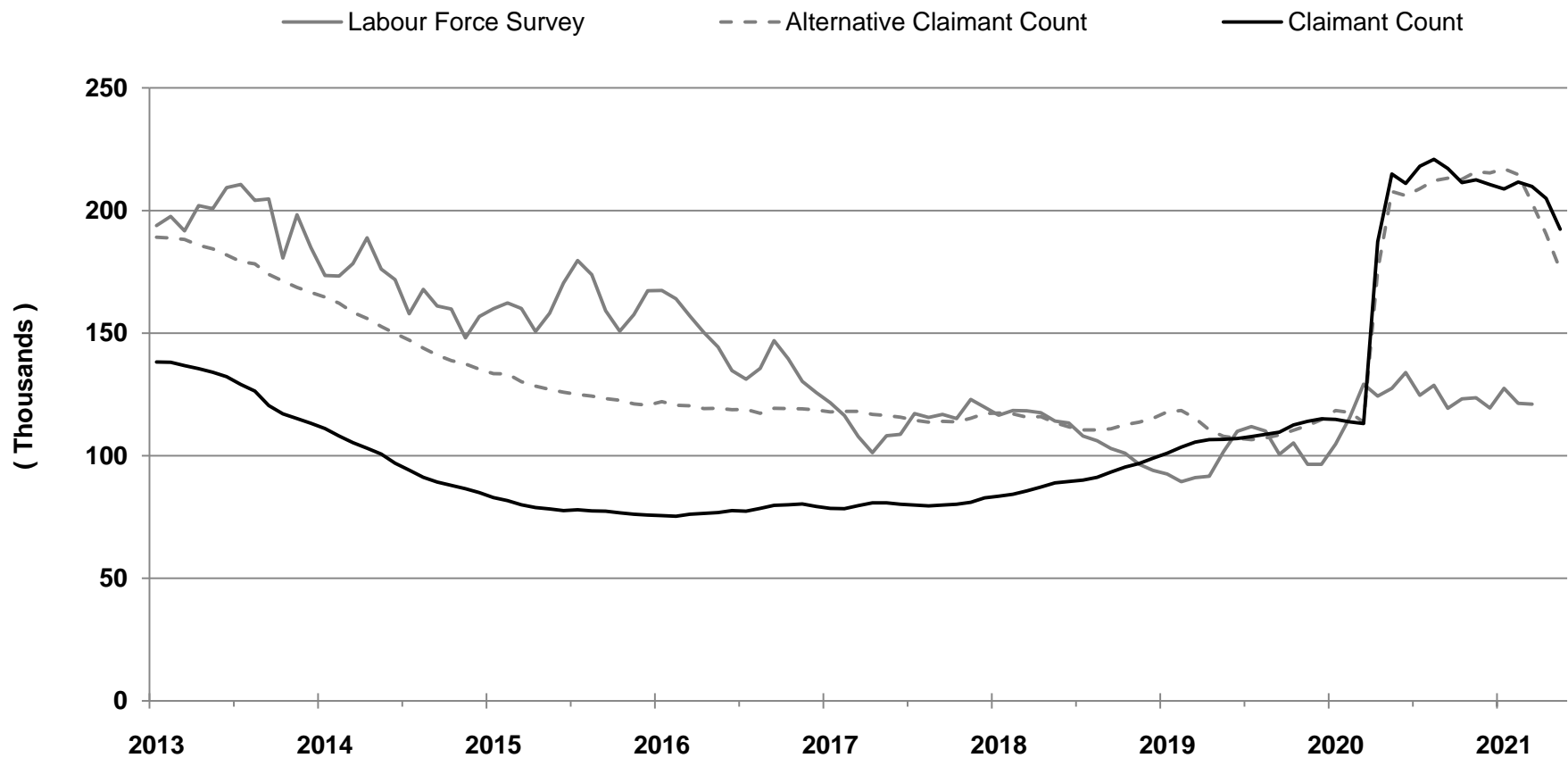


Source: Annual Population Survey, ONS (Jan-Dec datasets)

**†IMPORTANT NOTE:** Annual Population Survey (APS) responses are still weighted to official population projections and are based on demographic trends that pre-date the COVID-19 pandemic. ONS are carrying out a reweighting process using growth rates from HMRC Real Time Information to allow for different trends during the COVID-19 pandemic. Current APS estimates will be reweighted using this methodology later in the year. Rates published from the APS remain robust; however, levels and changes in levels should be used with caution. This will particularly affect estimates for country of birth, nationality, ethnicity and disability. For further information, see Notes (page 44).

**Chart 5.1: Unemployment, Alternative Claimant Count and Claimant Count levels, Scotland, January 2013 - June 2021**

*seasonally adjusted*



Sources: Labour Force Survey (ONS): Dec-Feb 2013 - Mar-May 2021

Claimant Count (ONS), Jan 2013 - June 2021

Alternative Claimant Count (DWP): Jan 2013 - May 2021

**IMPORTANT NOTE:** Labour Force Survey (LFS) estimates from January to March 2020 until February to April 2021 have been reweighted to new populations derived using growth rates from HMRC Real Time Information to allow for different trends during the COVID-19 pandemic. Data in this chart is based on estimates which may differ from those previously published. For further information, see Notes (page 44).

**Table 5.1a: Claimant Count levels, June 2021 - (Experimental data)**

	Level	Change on previous month		Change on previous year		Change on June 2013	
	(000s)	(000s)		(000s)		(000s)	
Scotland	181	-11	↓	-30	↓	49	↑
England	1,994	-95	↓	-194	↓	802	↑
Wales	96	-6	↓	-19	↓	21	↑
N Ireland	51	-2	↓	-11	↓	-12	↓
UK	2,322	-115	↓	-253	↓	860	↑

**Table 5.1b: Claimant Count rates, June 2021 - (Experimental data)**

	Rate	Change on previous month		Change on previous year		Change on June 2013	
	(%)	(%pts)		(%pts)		(%pts)	
Scotland	5.7	-0.3	↓	-0.9	↓	0.9	↑
England	5.8	-0.3	↓	-0.6	↓	1.8	↑
Wales	5.7	-0.4	↓	-1.1	↓	0.5	↑
N Ireland	5.2	-0.2	↓	-1.1	↓	-1.9	↓
UK	5.8	-0.3	↓	-0.6	↓	1.6	↑

Source: Claimant Count, ONS (seasonally adjusted)

Notes:

1. Levels rounded to nearest 1000.
2. The Claimant Count rate is calculated as a proportion of Claimant Count + Workforce jobs.
3. Claimant count rates are workplace based.
4. Data in these tables are seasonally adjusted. Therefore, they are not consistent with Table 5.2 onwards as these are based on data that is not seasonally adjusted.

ONS re-classified the Claimant Count series as experimental following the introduction of DWP Universal Credit and concerns that this series may be misleading.

See Notes (page 44) for further information.

**Table 5.2: Claimant Count by local authority (Experimental data)**  
*not seasonally adjusted*

	June 2021 Total Claimants	% Change on year		Claimant Count rate (%)	Change on year (%pts)	
Aberdeen City	8,265	0.8	↑	5.3	0.0	↔
Aberdeenshire	5,440	-9.8	↓	3.4	-0.4	↓
Angus	3,180	-16.0	↓	4.6	-0.9	↓
Argyll and Bute	2,370	-25.5	↓	4.7	-1.6	↓
City of Edinburgh	15,420	-12.6	↓	4.2	-0.6	↓
Clackmannanshire	1,745	-18.2	↓	5.4	-1.2	↓
Dumfries and Galloway	3,945	-20.2	↓	4.5	-1.1	↓
Dundee City	6,145	-13.8	↓	6.2	-1.0	↓
East Ayrshire	5,015	-15.9	↓	6.6	-1.2	↓
East Dunbartonshire	2,165	-19.5	↓	3.3	-0.8	↓
East Lothian	2,810	-19.6	↓	4.3	-1.0	↓
East Renfrewshire	1,740	-23.2	↓	3.1	-0.9	↓
Falkirk	5,125	-15.7	↓	5.0	-0.9	↓
Fife	13,020	-12.9	↓	5.6	-0.8	↓
Glasgow City	32,680	-9.8	↓	7.3	-0.8	↓
Highland	6,065	-26.0	↓	4.2	-1.5	↓
Inverclyde	2,785	-11.0	↓	5.7	-0.7	↓
Midlothian	2,580	-13.9	↓	4.5	-0.7	↓
Moray	2,510	-13.6	↓	4.3	-0.7	↓
Na h-Eileanan Siar	625	-24.8	↓	4.0	-1.3	↓
North Ayrshire	5,730	-19.2	↓	7.0	-1.7	↓
North Lanarkshire	12,605	-16.2	↓	5.7	-1.1	↓
Orkney Islands	290	-23.6	↓	2.2	-0.7	↓
Perth and Kinross	3,530	-19.0	↓	3.9	-0.9	↓
Renfrewshire	6,080	-18.7	↓	5.3	-1.2	↓
Scottish Borders	3,100	-14.2	↓	4.6	-0.8	↓
Shetland Islands	380	-22.5	↓	2.7	-0.8	↓
South Ayrshire	3,975	-14.1	↓	6.0	-1.0	↓
South Lanarkshire	10,830	-16.3	↓	5.4	-1.0	↓
Stirling	2,200	-27.6	↓	3.6	-1.4	↓
West Dunbartonshire	3,945	-17.4	↓	7.0	-1.5	↓
West Lothian	5,490	-14.3	↓	4.7	-0.8	↓
<b>Scotland</b>	<b>181,780</b>	<b>-14.7</b>	<b>↓</b>	<b>5.2</b>	<b>-0.9</b>	<b>↓</b>

Source: Claimant Count, ONS

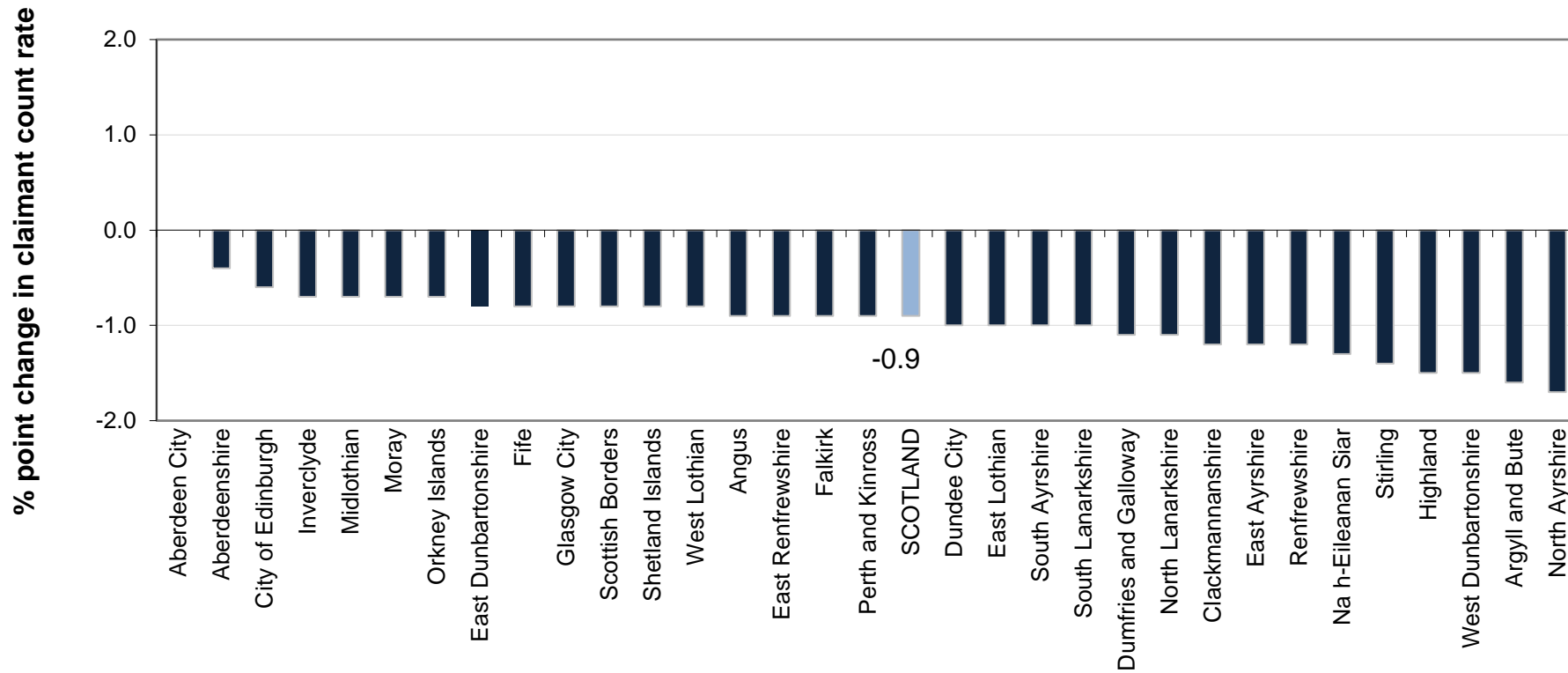
Notes:

1. Levels rounded to nearest 5.
2. The Claimant Count rate is calculated as a proportion of the resident population, aged 16-64, based on the Mid-year population estimates for 2019.

ONS re-classified the Claimant Count series as experimental following the introduction of DWP Universal Credit and concerns that this series may be misleading.

See Notes (page 44) for further information.

Chart 5.2: Change in Claimant Count rate by local authority, June 2020 to June 2021 (Experimental data)



Source: Claimant Count, ONS

Notes:

1. Claimant Count rates are based on unrounded data. Chart labels are rounded to one decimal place.
2. Claimant Count rates in each local authority and for Scotland are calculated as a proportion of the resident population, aged 16-64, based on the Mid-year population estimates for 2019.



**Table 5.3: 16-24 Claimant Count levels and rates, Scotland and UK**  
**(Experimental data)**  
*not seasonally adjusted*

	Scotland		UK	
	Level	Rate (%)	Level	Rate (%)
<b>June 2020</b>	43,640	7.6	517,345	7.3
<b>June 2021</b>	34,540	6.0	432,325	6.1
<b>Change on year (rate as %pt)</b>	-9,100	-1.6	-85,020	-1.2

Source: Claimant Count, ONS

**Table 5.4: 16-24 Claimant Count levels and rates by gender, Scotland**  
**(Experimental data)**  
*not seasonally adjusted*

	Male		Female	
	Level	Rate (%)	Level	Rate (%)
<b>June 2020</b>	26,765	9.2	16,875	6.0
<b>June 2021</b>	21,970	7.5	12,570	4.5
<b>Change on year (rate as %pt)</b>	-4,795	-1.6	-4,305	-1.5

Source: Claimant Count, ONS

Notes:

1. Levels rounded to nearest 5.
2. These Claimant Count rates for 16-24 year olds have been produced by the Scottish Government and are calculated as a proportion of the resident population, aged 16-24, based on the Mid-year population estimates for 2019.

ONS re-classified the Claimant Count series as experimental following the introduction of DWP Universal Credit and concerns that this series may be misleading.

**See Notes (page 44) for further information.**

**Table 5.5: 16-24 Claimant Count levels and rates by Local Authority, June 2021 (Experimental data)**

	Level			Rate		
	June 2021	Change on year		June 2021	Change on year (%pts)	
<b>Scotland</b>	<b>34,540</b>	<b>-9,100</b>	<b>↓</b>	<b>6.0</b>	<b>-1.6</b>	<b>↓</b>
<i>Local Authority Area</i>						
Aberdeen City	1,500	-135	↓	5.6	-0.5	↓
Aberdeenshire	1,160	-75	↓	5.1	-0.3	↓
Angus	670	-215	↓	6.3	-2.0	↓
Argyll and Bute	415	-185	↓	5.1	-2.3	↓
City of Edinburgh	2,420	-675	↓	3.7	-1.0	↓
Clackmannanshire	385	-130	↓	7.6	-2.5	↓
Dumfries and Galloway	675	-350	↓	5.1	-2.7	↓
Dundee City	1,320	-375	↓	6.3	-1.8	↓
East Ayrshire	1,005	-290	↓	8.5	-2.5	↓
East Dunbartonshire	400	-170	↓	3.9	-1.6	↓
East Lothian	555	-195	↓	5.7	-2.0	↓
East Renfrewshire	345	-165	↓	3.6	-1.7	↓
Falkirk	1,095	-180	↓	7.0	-1.2	↓
Fife	2,735	-515	↓	6.8	-1.3	↓
Glasgow City	5,485	-1,085	↓	6.9	-1.4	↓
Highland	1,155	-485	↓	5.4	-2.3	↓
Inverclyde	520	-120	↓	6.8	-1.5	↓
Midlothian	575	-110	↓	6.7	-1.3	↓
Moray	530	-145	↓	5.7	-1.5	↓
Na h-Eileanan Siar	90	-70	↓	4.3	-3.4	↓
North Ayrshire	1,150	-370	↓	8.5	-2.7	↓
North Lanarkshire	2,455	-755	↓	6.8	-2.1	↓
Orkney Islands	65	-10	↓	3.5	-0.5	↓
Perth and Kinross	710	-260	↓	5.2	-1.9	↓
Renfrewshire	1,100	-405	↓	6.1	-2.2	↓
Scottish Borders	670	-140	↓	6.6	-1.4	↓
Shetland Islands	80	-15	↓	3.8	-0.7	↓
South Ayrshire	795	-200	↓	7.7	-1.9	↓
South Lanarkshire	2,010	-670	↓	6.5	-2.2	↓
Stirling	475	-200	↓	3.9	-1.6	↓
West Dunbartonshire	775	-170	↓	8.9	-2.0	↓
West Lothian	1,225	-240	↓	6.7	-1.3	↓

Source: Claimant Count, ONS

Notes:

1. Levels rounded to nearest 5.

2. These Claimant Count rates for 16-24 year olds have been produced by the Scottish Government and are calculated as a proportion of the resident population, aged 16-24, based on the Mid-year population estimates for 2019.

ONS re-classified the Claimant Count series as experimental following the introduction of DWP Universal Credit and concerns that this series may be misleading.

See Notes (page 44) for further information.

**Table 6.1a: Alternative Claimant Count levels, May 2021 - (Experimental data)**

	Level	Change on previous month		Change on previous year		Change on May 2013	
	(000s)	(000s)		(000s)		(000s)	
Scotland	176	-15	↓	-32	↓	-9	↓
England	2,003	-164	↓	-231	↓	205	↑
Wales	96	-8	↓	-21	↓	-13	↓
N Ireland	52	-4	↓	-11	↓	-30	↓
UK	2,331	-191	↓	-295	↓	154	↑

**Table 6.1b: Alternative Claimant Count rates, May 2021 - (Experimental data)**

	Rate	Change on previous month		Change on previous year		Change on May 2013	
	(%)	(%pts)		(%pts)		(%pts)	
Scotland	5.0	-0.4	↓	-0.9	↓	-0.3	↓
England	5.7	-0.5	↓	-0.7	↓	0.5	↑
Wales	5.0	-0.4	↓	-1.1	↓	-0.7	↓
N Ireland	4.4	-0.3	↓	-0.9	↓	-2.6	↓
UK	5.6	-0.5	↓	-0.7	↓	0.3	↑

Source: *Alternative Claimant Count, DWP, seasonally adjusted*

Notes:

1. Levels rounded to nearest 1000.
2. The Alternative Claimant Count is the total number of people claiming unemployment-related benefits. This comprises those claiming either Jobseeker's Allowance or Universal Credit (under the Searching for Work conditionality) along with estimates of additional claimants who would have been searching for work under Universal Credit had it existed over the entire period since 2013.
3. The Alternative Claimant Count rate is calculated as a proportion of the resident population, aged 16-64, based on the Mid-year population estimates for 2019.
4. The Alternative Claimant Count publication is available online at (based on 'Table 2\_region') <https://www.gov.uk/government/statistics/alternative-claimant-count-statistics-january-2013-to-may-2021>

**Table 6.2: Alternative Claimant Count by local authority (Experimental data)**

*not seasonally adjusted*

	May 2021 Total Claimants	% Change on year		Alternative Claimant Count rate (%)	Change on year (%pts)	
Aberdeen City	8,488	6.1	↑	5.4	0.3	↑
Aberdeenshire	5,567	-9.1	↓	3.5	-0.3	↓
Angus	3,239	-15.7	↓	4.7	-0.9	↓
Argyll and Bute	2,523	-24.2	↓	5.0	-1.6	↓
City of Edinburgh	16,843	-8.8	↓	4.6	-0.4	↓
Clackmannanshire	1,822	-20.3	↓	5.7	-1.4	↓
Dumfries and Galloway	4,045	-22.5	↓	4.6	-1.3	↓
Dundee City	6,352	-12.3	↓	6.4	-0.9	↓
East Ayrshire	5,115	-15.0	↓	6.7	-1.2	↓
East Dunbartonshire	2,136	-23.7	↓	3.3	-1.0	↓
East Lothian	3,030	-18.7	↓	4.6	-1.1	↓
East Renfrewshire	1,765	-25.7	↓	3.1	-1.1	↓
Falkirk	5,246	-17.2	↓	5.1	-1.1	↓
Fife	13,470	-13.4	↓	5.8	-0.9	↓
Glasgow City	32,781	-11.7	↓	7.3	-1.0	↓
Highland	6,395	-21.8	↓	4.5	-1.2	↓
Inverclyde	2,705	-14.9	↓	5.6	-1.0	↓
Midlothian	2,623	-18.0	↓	4.6	-1.0	↓
Moray	2,578	-14.2	↓	4.4	-0.7	↓
Na h-Eileanan Siar	640	-26.9	↓	4.1	-1.5	↓
North Ayrshire	5,659	-20.5	↓	6.9	-1.8	↓
North Lanarkshire	12,236	-19.9	↓	5.6	-1.4	↓
Orkney Islands	315	-22.0	↓	2.4	-0.7	↓
Perth and Kinross	3,672	-17.4	↓	4.0	-0.8	↓
Renfrewshire	6,045	-20.7	↓	5.3	-1.4	↓
Scottish Borders	3,331	-14.2	↓	4.9	-0.8	↓
Shetland Islands	350	-24.4	↓	2.5	-0.8	↓
South Ayrshire	4,117	-12.6	↓	6.2	-0.9	↓
South Lanarkshire	10,714	-18.6	↓	5.3	-1.2	↓
Stirling	2,333	-24.8	↓	3.9	-1.3	↓
West Dunbartonshire	3,875	-20.1	↓	6.9	-1.7	↓
West Lothian	5,670	-16.5	↓	4.8	-1.0	↓
<b>Scotland</b>	<b>185,680</b>	<b>-15.1</b>	<b>↓</b>	<b>5.3</b>	<b>-0.9</b>	<b>↓</b>

Source: Alternative Claimant Count, DWP

Notes:

1. The Alternative Claimant Count is the total number of people claiming unemployment-related benefits. This comprises those claiming either Jobseeker's Allowance or Universal Credit (under the Searching for Work conditionality) along with estimates of additional claimants who would have been searching for work under Universal Credit had it existed over the entire period since 2013.
2. The Alternative Claimant Count rates are calculated as a proportion of the resident population, aged 16-64, based on the Mid-year population estimates for 2019.

**Table 6.3: 16-24 Alternative Claimant Count levels and rates, Scotland and UK (Experimental data)**

	Scotland		UK	
	Level	Rate (%)	Level	Rate (%)
<b>May 2020</b>	39,872	6.9	493,745	7.0
<b>May 2021</b>	34,840	6.1	445,189	6.3
<b>Change on year (rate as %pt)</b>	-5,032	-0.9	-48,556	-0.7

Source: Alternative Claimant Count, DWP

**Table 6.4: 16-24 Alternative Claimant Count levels and rates by gender, Scotland (Experimental data)**

	Male		Female	
	Level	Rate (%)	Level	Rate (%)
<b>May 2020</b>	24,837	8.5	15,040	5.3
<b>May 2021</b>	22,205	7.6	12,638	4.5
<b>Change on year (rate as %pt)</b>	-2,632	-0.9	-2,402	-0.9

Source: Alternative Claimant Count, DWP

Notes:

1. The Alternative Claimant Count is the total number of people claiming unemployment-related benefits. This comprises those claiming either Jobseeker's Allowance or Universal Credit (under the Searching for Work conditionality) along with estimates of additional claimants who would have been searching for work under Universal Credit had it existed over the entire period since 2013.
2. The Alternative Claimant Count rate is calculated as a proportion of the resident population, aged 16-64, based on the Mid-year population estimates for 2019.

**Table 6.5: 16-24 Alternative Claimant Count levels and rates by Local Authority (Experimental data)**

	Level			Rate		
	May 2021	Change on year		May 2021	Change on year (%pts)	
<b>Scotland</b>	<b>34,840</b>	<b>-5,032</b>	<b>↓</b>	<b>6.1</b>	<b>-0.9</b>	<b>↓</b>
<i>Local Authority Area</i>						
Aberdeen City	1,520	46	↑	5.6	0.2	↑
Aberdeenshire	1,123	-5	↓	4.9	0.0	↔
Angus	666	-90	↓	6.2	-0.8	↓
Argyll and Bute	418	-120	↓	5.1	-1.5	↓
City of Edinburgh	2,587	-207	↓	4.0	-0.3	↓
Clackmannanshire	421	-71	↓	8.3	-1.4	↓
Dumfries and Galloway	707	-260	↓	5.4	-2.0	↓
Dundee City	1,326	-198	↓	6.4	-0.9	↓
East Ayrshire	1,025	-102	↓	8.7	-0.9	↓
East Dunbartonshire	375	-148	↓	3.7	-1.4	↓
East Lothian	607	-91	↓	6.2	-0.9	↓
East Renfrewshire	347	-101	↓	3.6	-1.1	↓
Falkirk	1,085	-128	↓	7.0	-0.8	↓
Fife	2,724	-261	↓	6.8	-0.7	↓
Glasgow City	5,405	-719	↓	6.8	-0.9	↓
Highland	1,203	-244	↓	5.7	-1.1	↓
Inverclyde	533	-65	↓	7.0	-0.9	↓
Midlothian	576	-51	↓	6.7	-0.6	↓
Moray	526	-74	↓	5.7	-0.8	↓
Na h-Eileanan Siar	89	-43	↓	4.3	-2.1	↓
North Ayrshire	1,156	-182	↓	8.6	-1.4	↓
North Lanarkshire	2,410	-565	↓	6.7	-1.6	↓
Orkney Islands	59	-8	↓	3.2	-0.4	↓
Perth and Kinross	702	-166	↓	5.1	-1.2	↓
Renfrewshire	1,140	-228	↓	6.3	-1.3	↓
Scottish Borders	683	-57	↓	6.8	-0.6	↓
Shetland Islands	72	-23	↓	3.5	-1.1	↓
South Ayrshire	820	-58	↓	8.0	-0.6	↓
South Lanarkshire	2,036	-475	↓	6.6	-1.5	↓
Stirling	508	-86	↓	4.1	-0.7	↓
West Dunbartonshire	767	-135	↓	8.8	-1.5	↓
West Lothian	1,232	-127	↓	6.8	-0.7	↓

Source: *Alternative Claimant Count, DWP*

Notes:

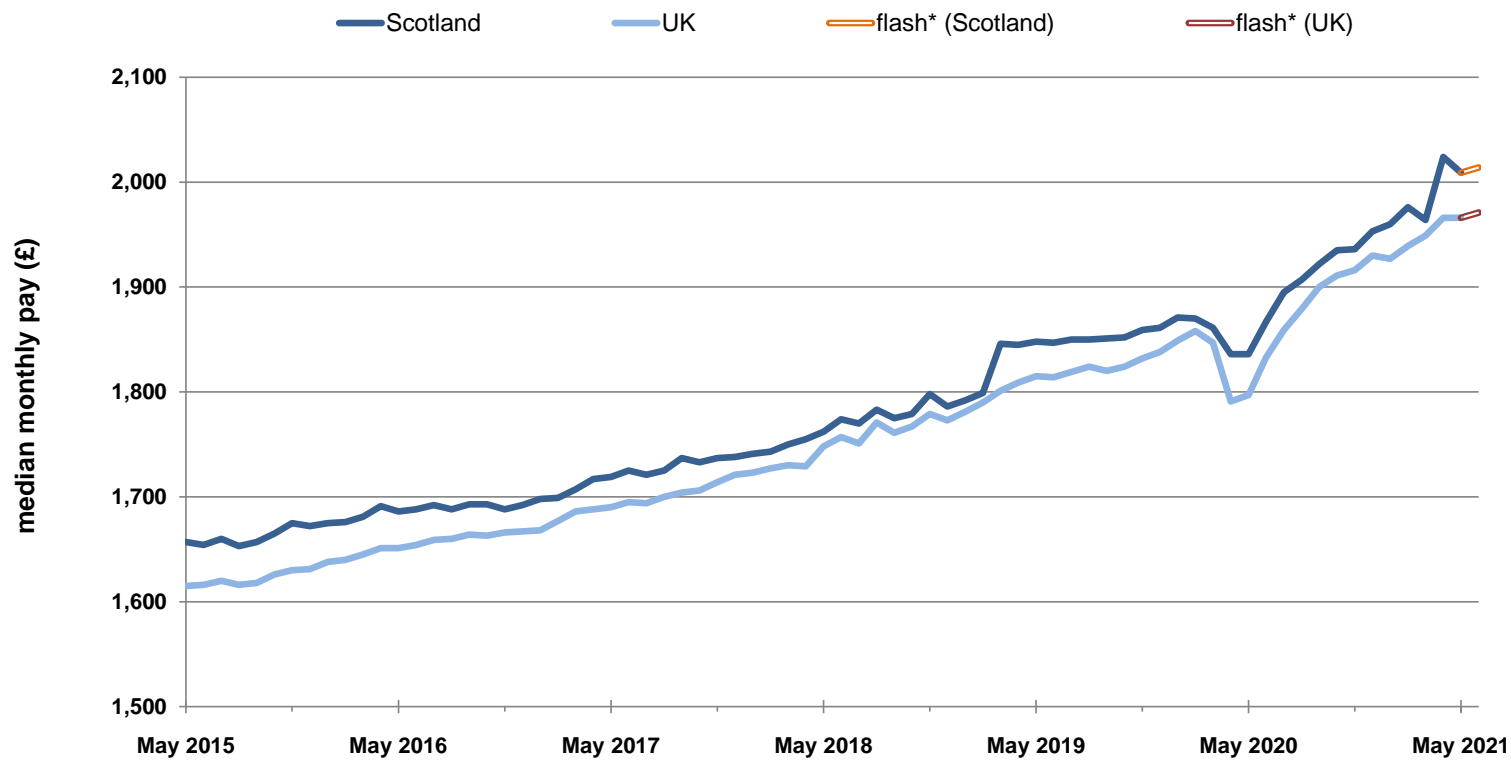
1. The Alternative Claimant Count is the total number of people claiming unemployment-related benefits. This comprises those claiming either Jobseeker's Allowance or Universal Credit (under the Searching for Work conditionality) along with estimates of additional claimants who would have been searching for work under Universal Credit had it existed over the entire period since 2013.
2. The Alternative Claimant Count rates are calculated as a proportion of the resident population, aged 16-64, based on the Mid-year population estimates for 2019.

**Table 7.1: HMRC RTI data, Scotland and UK, May 2015 - May 2021 (Experimental data)**

<b>Scotland</b>	<b>May 2015</b>	<b>May 2016</b>	<b>May 2017</b>	<b>May 2018</b>	<b>May 2019</b>	<b>May 2020</b>	<b>May 2021</b>
<b>Total employees (000s)</b>	2,337	2,349	2,362	2,370	2,384	2,336	2,342
<i>Annual Growth (%)</i>		0.5	0.6	0.3	0.6	-2.0	0.3
<b>Aggregate pay per month (£million)</b>	4,972	4,999	5,168	5,262	5,541	5,321	5,802
<i>Annual Growth (%)</i>		0.5	3.4	1.8	5.3	-4.0	9.0
<b>Median monthly pay (£ per month)</b>	1,657	1,686	1,719	1,762	1,848	1,836	2,009
<i>Annual Growth (%)</i>		1.8	2.0	2.5	4.9	-0.6	9.4
<b>Mean monthly pay (£ per month)</b>	2,128	2,128	2,188	2,220	2,325	2,278	2,478
<i>Annual Growth (%)</i>		0.0	2.8	1.5	4.7	-2.0	8.8
<b>UK</b>	<b>May 2015</b>	<b>May 2016</b>	<b>May 2017</b>	<b>May 2018</b>	<b>May 2019</b>	<b>May 2020</b>	<b>May 2021</b>
<b>Total employees (000s)</b>	27,398	27,872	28,241	28,554	28,883	28,376	28,502
<i>Annual Growth (%)</i>		1.7	1.3	1.1	1.2	-1.8	0.4
<b>Aggregate pay per month (£million)</b>	60,810	63,043	65,827	68,527	71,686	69,660	77,282
<i>Annual Growth (%)</i>		3.7	4.4	4.1	4.6	-2.8	10.9
<b>Median monthly pay (£ per month)</b>	1,615	1,651	1,690	1,748	1,815	1,797	1,966
<i>Annual Growth (%)</i>		2.2	2.4	3.4	3.8	-1.0	9.4
<b>Mean monthly pay (£ per month)</b>	2,219	2,262	2,331	2,400	2,482	2,455	2,711
<i>Annual Growth (%)</i>		1.9	3.1	3.0	3.4	-1.1	10.4

Source: PAYE real-time information, Seasonally adjusted (HMRC)

**Chart 7.1: Median gross monthly pay, Scotland and UK, May 2015 - June 2021 (Experimental Statistics)**  
*seasonally adjusted*



Source: PAYE real-time information (HMRC)

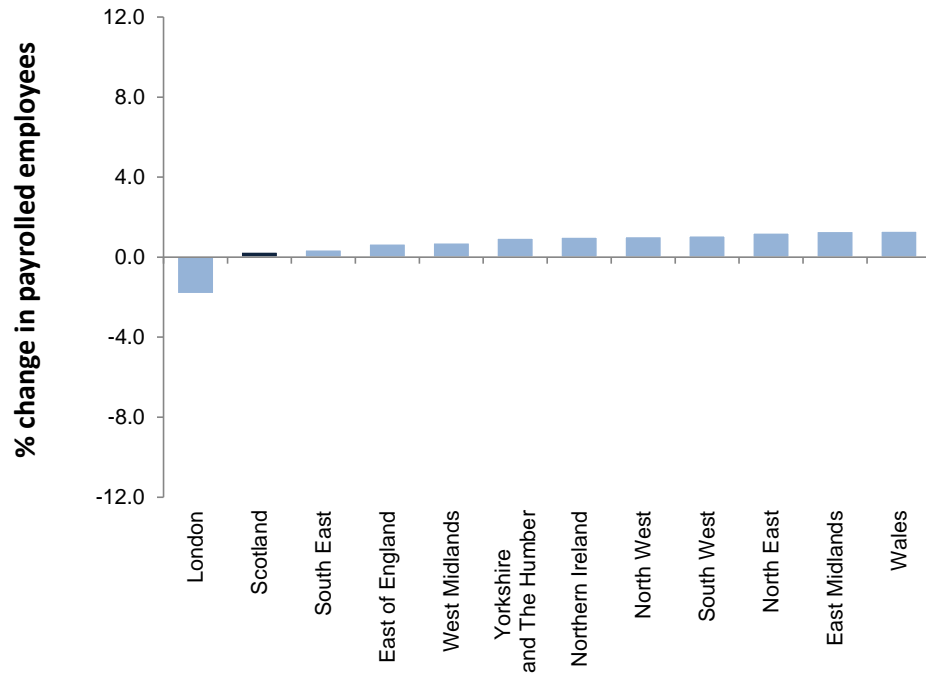
\*flash estimates are for June 2021 and are based on around 85% of required information being available and may be subject to revision.



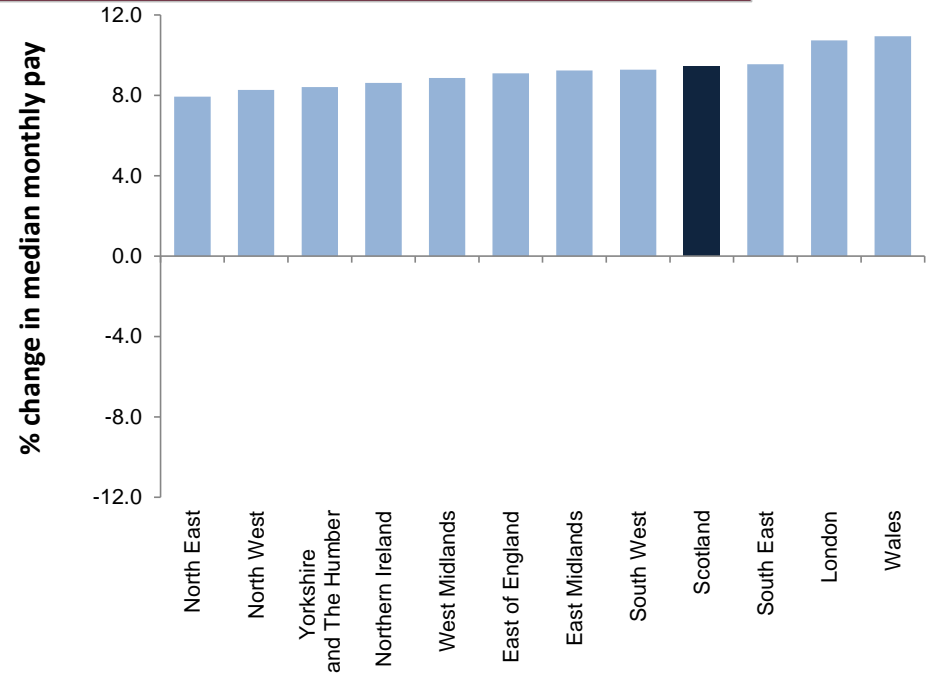
**Charts 7.2 and 7.3: Payrolled employees and median monthly pay by region - annual change, May 2020 to May 2021 (Experimental data)**

*seasonally adjusted*

**Chart 7.2: Total payrolled employees by Government Office Region - % change on year**  
*seasonally adjusted*



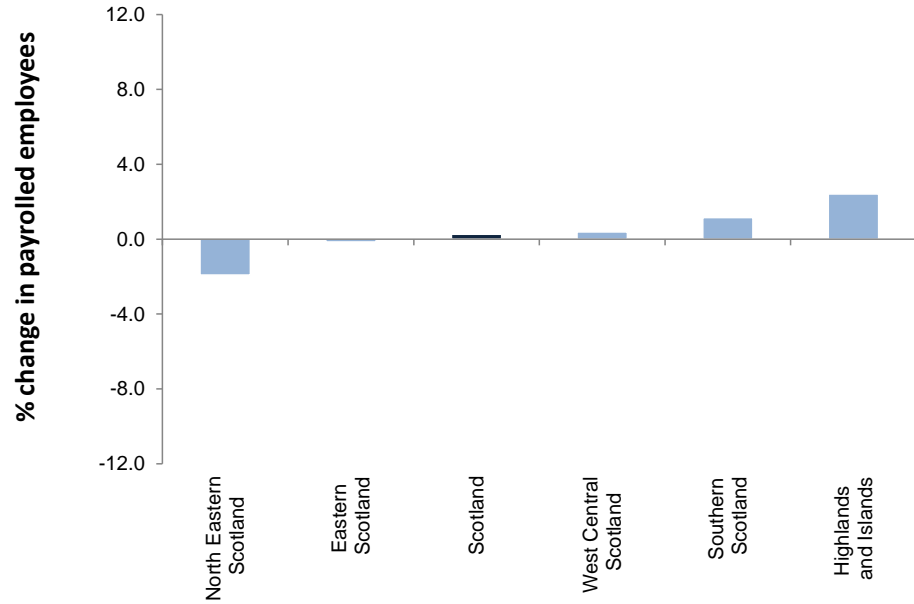
**Chart 7.3: Median monthly pay by Government Office Region - % change on year**  
*seasonally adjusted*



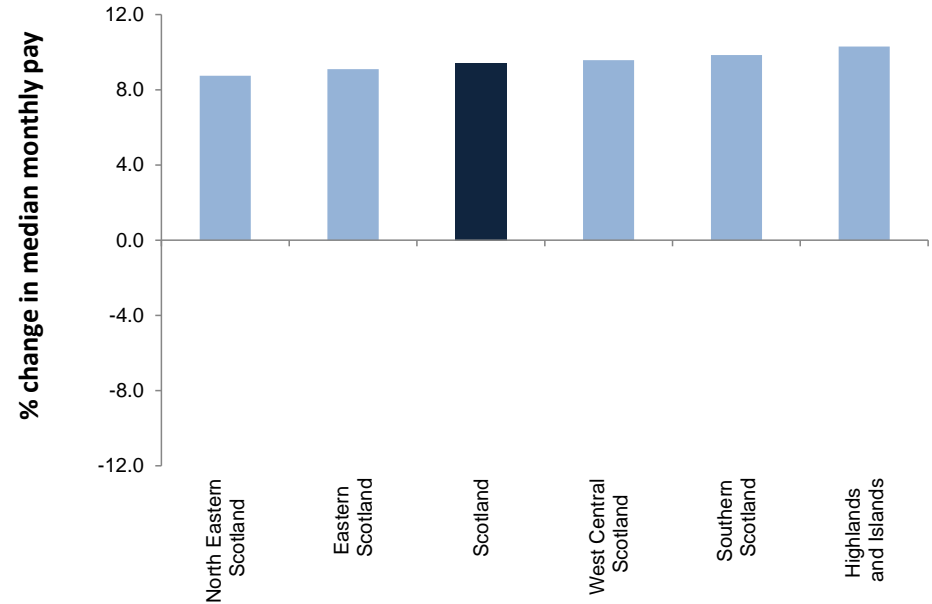
Source: PAYE real-time information (HMRC)

**Charts 7.4 and 7.5: Payrolled employees and median monthly pay (NUTS2) - annual change, May 2020 to May 2021 (Experimental data)**  
*seasonally adjusted*

**Chart 7.4: Total payrolled employees by NUTS2 region - % change on year**  
*seasonally adjusted*



**Chart 7.5: Median monthly pay by NUTS2 region - % change on year**  
*seasonally adjusted*



Source: PAYE real-time information (HMRC)

**Table 7.2: HMRC RTI data (NUTS2 and NUTS3 areas), May 2021 (Experimental data)**

	Payrolled employees			Median monthly pay		
	Level (000s)	% change on year		£ per month	% change on year	
<b>Scotland</b>	<b>2,342</b>	<b>0.3</b>	<b>↑</b>	<b>2,009</b>	<b>9.4</b>	<b>↑</b>
<b>North Eastern Scotland</b>	<b>220</b>	<b>-1.9</b>	<b>↓</b>	<b>2,139</b>	<b>8.7</b>	<b>↑</b>
Aberdeen City and Aberdeenshire	219	-2.1	↓	2,134	8.8	↑
<b>Highlands and Islands</b>	<b>199</b>	<b>2.4</b>	<b>↑</b>	<b>1,907</b>	<b>10.3</b>	<b>↑</b>
Caithness and Sutherland and Ross and Cromarty	38	2.2	↑	1,907	10.0	↑
Inverness and Nairn and Moray, Badenoch and Strathspey	89	1.7	↑	1,918	11.6	↑
Lochaber, Skye and Lochalsh, Arran and Cumbrae and Argyll and Bute	40	3.6	↑	1,794	9.5	↑
Na h-Eileanan Siar	11	2.8	↑	1,950	7.5	↑
Orkney Islands	10	4.7	↑	1,835	7.6	↑
Shetland Islands	11	2.3	↑	2,184	9.0	↑
<b>Eastern Scotland</b>	<b>867</b>	<b>-0.1</b>	<b>↓</b>	<b>2,026</b>	<b>9.1</b>	<b>↑</b>
Angus and Dundee City	109	-0.2	↓	1,874	7.3	↑
City of Edinburgh	230	-1.5	↓	2,158	10.7	↑
Clackmannanshire and Fife	177	0.5	↑	1,953	7.5	↑
East Lothian and Midlothian	91	0.7	↑	2,022	9.9	↑
Falkirk	73	-0.1	↓	2,049	9.0	↑
Perth and Kinross and Stirling	102	0.6	↑	1,991	11.0	↑
West Lothian	85	0.3	↑	2,049	8.0	↑
<b>West Central Scotland</b>	<b>662</b>	<b>0.4</b>	<b>↑</b>	<b>2,015</b>	<b>9.6</b>	<b>↑</b>
East Dunbartonshire, West Dunbartonshire and Helensburgh and Lomond	97	0.5	↑	2,113	9.0	↑
Glasgow City	255	0.2	↑	1,943	10.3	↑
Inverclyde, East Renfrewshire and Renfrewshire	155	0.7	↑	2,067	9.7	↑
North Lanarkshire	154	0.3	↑	2,026	8.6	↑
<b>Southern Scotland</b>	<b>395</b>	<b>1.2</b>	<b>↑</b>	<b>1,952</b>	<b>9.8</b>	<b>↑</b>
Dumfries and Galloway	57	1.6	↑	1,812	8.9	↑
East Ayrshire and North Ayrshire mainland	102	1.0	↑	1,939	10.0	↑
Scottish Borders	46	1.4	↑	1,843	9.8	↑
South Ayrshire	43	0.5	↑	1,934	10.4	↑
South Lanarkshire	146	1.2	↑	2,050	9.7	↑

Source: PAYE real-time information, Seasonally adjusted (HMRC)

### Notes on the LFS/APS estimates [Sections 1 - 4]

**IMPORTANT NOTE:** Previous Labour Force Survey (LFS) and Annual Population Survey (APS) responses were weighted to 2018-based official population projections, based on demographic trends that pre-date the COVID-19 pandemic. LFS estimates from January – March 2020 to February – April 2021 have now been reweighted to new populations derived using growth rates from HM Revenue and Customs (HMRC) Real Time Information (RTI) to allow for different trends during the COVID-19 pandemic. The reweighting will give improved estimates of both rates and levels

APS estimates have not yet been reweighted and are still weighted to official population projections. The APS estimates will be reweighted later in the year. Rates currently published from the APS remain robust; however, levels and changes in levels should be used with caution. This will particularly affect estimates for country of birth, nationality, ethnicity and disability.

An ONS article explaining the reasons for the change in methodology along with the impact on LFS and APS estimates can be found at:

<https://www.ons.gov.uk/employmentandlabourmarket/peopleinwork/employmentandemployeetypes/methodologies/labourforcesurveyweightingmethodology>

### Measures of disability [Tables 3.1a and 3.1b]

In the April-June 2013 dataset, and subsequent datasets, questions used to derive current disability status of a person were changed. Estimates are now based on the core definition of disability under the Equality Act 2010, as specified in the Government Statistical Service (GSS) Harmonised Standards for Questions on disability.

- The definition includes people with a health condition or illness lasting 12 months or more that reduces their ability to carry out day-to-day activities.
- The definition excludes certain non-core groups covered by the Equality Act, such as those with progressive or past conditions that do not currently limit their activities, and conditions that only limit their activities without medication or treatment.
- Respondents are now asked to take into account any medication that they are currently taking when previously they were asked to consider their day-to-day activities without the use of medication.

The introduction of this new definition has created a discontinuity in the series and estimates are not directly comparable with earlier periods

### Claimant Count [Section 5]

The Claimant Count is not a measure of unemployment and changes in the Claimant Count will not be wholly because of changes in the number of people who are unemployed. It is a measure of the number of people claiming benefit principally for the reason of being unemployed:

- between January 1971 (when comparable estimates start) and September 1996, it is an estimate of the number of people who would have claimed unemployment-related benefits if Jobseeker's Allowance had existed at that time.
- between October 1996 and April 2013, the Claimant Count is a count of the number of people claiming Jobseeker's Allowance (JSA).
- between May 2013 and October 2013, the Claimant Count includes all claimants of Universal Credit (including those who were in work) as well as all JSA claimants
- from November 2013, the Claimant Count includes all out of work Universal Credit claimants as well as all JSA claimants .
- From April 2015 onwards the claimant count includes those claimants of Universal Credit who are required to search for work, i.e. within the Searching for Work conditionality regime as defined by the Department for Work & Pensions as well as all JSA claimants

Information for June 2021 is for the number of claimants as at 10 June 2021.

### Alternative Claimant Count [Section 6]

The Alternative Claimant Count measures the number of people claiming unemployment-related benefits. Previously, the Claimant Count was simply the number of people claiming Jobseeker's Allowance.

- Since the introduction of Universal Credit in April 2013, Universal Credit claimants who meet the 'Searching for Work' conditionality have been added to overall Claimant Count figures. By bringing more people within the coverage of the Claimant Count, total numbers may rise irrespective of economic performance.
- ONS has withdrawn Claimant Count data from Labour Market Statistics bulletins, stating that it was no longer a reliable economic indicator and could be a misleading representation of changes in the labour market. The Alternative Claimant Count is intended to provide a consistent claimant unemployment series and thus a better indicator of local labour market change over time.
- The new Alternative Claimant Count is not directly comparable to the Claimant Count figures previously published.

Statistics for this new measure are published quarterly by the Department for Work and Pensions (DWP). They are available by calendar month at national and local authority level and can be broken down by gender, age group and type of benefit claimed. Tables 6.1 to 6.5 show experimental Alternative Claimant Count data published by DWP and are updated quarterly. The most recent data was published on 15 July 2021. Further information on this measure can be found at the following link:

<https://www.gov.uk/government/statistics/alternative-claimant-count-statistics-january-2013-to-may-2021>

## Further information

Further Labour Market information can be obtained from the following sites/sources.

### **Scottish Government Labour Market Statistics:**

Further commentary and charts are published in *Labour Market Trends: July 2021*

<https://www.gov.scot/publications/labour-market-trends-july-2021/>

### **Scottish Government Open Data:**

<https://statistics.gov.scot/home>

### **ONS:**

Labour Market Statistics Theme page

<http://www.ons.gov.uk/ons/taxonomy/index.html?nscl=Labour+Market>

Regional Labour Market Statistics

<https://www.ons.gov.uk/employmentandlabourmarket/peopleinwork/employmentandemployeetypes/bulletins/regionallabourmarket/previousReleases>

### **HMRC:**

Earnings and employment statistics from Pay As You Earn (PAYE) Real Time Information

<https://www.gov.uk/government/statistics/uk-real-time-information-experimental-statistics>

### **NOMIS:**

Online database for official labour market statistics

<https://www.nomisweb.co.uk/default.asp>

## Contact details

Telephone: 0131 244 6773

email: [LMStats@gov.scot](mailto:LMStats@gov.scot)