

Scotland's Labour Market - Monthly Briefing – August 2020

Scottish Government: Office of the Chief Economic Adviser

This document contains up-to-date statistical information concerning the labour market in Scotland from a range of official sources.

This document is part of a collection:

<https://www.gov.scot/collections/labour-market-statistics/>

HEADLINE ESTIMATES gender ages	YOUTH 16-24 YEARS gender UK regions International gender	LABOUR MARKET disability minority ethnic underemployment qualifications full-time education	UNEMPLOYMENT duration model based	ALTERNATIVE CLAIMANT COUNT all ages 16-24 years local authorities	CLAIMANT COUNT all ages 16-24 years local authorities	HMRC EARNINGS
--------------------------------------	--	--	---	--	--	---------------

**new
data**

<p style="text-align: center;">1. HEADLINE MEASURES</p> <p><i>Headline data</i></p> <p><i>gender</i></p> <p><i>age</i></p>	<p>y Table 1.1: Employment and unemployment, Apr-Jun 2020</p> <p>y Charts 1.1 and 1.2: Employment and unemployment rate trends for Scotland and UK, Apr-Jun 2020</p> <p>y Charts 1.3 and 1.4: Employment and unemployment rate trends for Scotland and UK, Apr-Jun 2020 - change on quarter and year</p> <p>y Charts 1.5 and 1.6: Unemployment rate (16+) by UK country, Apr-Jun 2020 - change on quarter and year</p> <p>y Table 1.2: Economic activity and inactivity, Apr-Jun 2020</p> <p>y Tables 1.3 and 1.4: Unemployment and Employment by Government Office Region, Apr-Jun 2020</p> <p>y Charts 1.7 and 1.8: Employment rate (16-64) for Government Office Regions, Apr-Jun 2020 - change on quarter and year</p> <p>y Charts 1.9 and 1.10: Unemployment rate (16+) for Government Office Regions, Apr-Jun 2020 - change on quarter and year</p> <p>y Table 1.5: Employment, ILO unemployment and inactivity rates by gender, Apr-Jun 2020</p> <p>y Chart 1.11: Employment rate by gender (16-64), Scotland and UK, 1997-2020</p> <p>y Chart 1.12: Unemployment rate by gender (16+), Scotland and UK, 1997-2020</p> <p>y Chart 1.13: Inactivity rate by gender (16-64), Scotland, UK 1997-2020</p> <p>y Table 1.6 : Employment, ILO Unemployment and Inactivity by age group, Scotland and UK (APS and LFS)</p>
<p style="text-align: center;">2: YOUTH 16-24 YEARS</p> <p><i>Headline data</i></p> <p><i>gender</i></p> <p><i>UK</i></p>	<p>y Table 2.1: Youth Employment, Unemployment and Inactivity (LFS and APS), Scotland and UK</p> <p>Charts 2.1 and 2.2: Youth employment and unemployment, Scotland and UK (APS)</p> <p>Table 2.2: Employment, ILO unemployment and inactivity for 16-24 age group by gender, Scotland and UK (APS), Apr 2019 - Mar 2020</p> <p>Charts 2.3 and 2.4: Youth employment and unemployment by gender, Scotland (APS)</p> <p>y Tables 2.3 and 2.4: Youth Unemployment and Employment by Government Office Region, Apr-Jun 2020</p>
<p style="text-align: center;">3: LABOUR MARKET</p> <p><i>disability</i></p> <p><i>ethnicity</i></p> <p><i>self-employed, full-time part-time</i></p> <p><i>underemployment</i></p> <p><i>qualifications</i></p> <p><i>excluding full-time education</i></p>	<p>y Table 3.1: Employment rates and levels of the population aged 16-64 by disability status, Scotland (LFS and APS), 2013-2020</p> <p>Table 3.2: Employment rates and levels of the population aged 16-64 by ethnicity and gender, Scotland, 2012 - 2020</p> <p>y Table 3.3: Employment patterns, Scotland, Apr-Jun 2020</p> <p>Table 3.4: Underemployment, Scotland and UK, 2013-2020</p> <p>Table 3.5: Employment rates by highest qualification held and gender, Scotland and UK, Apr 2019 - Mar 2020</p> <p>Table 3.6: Unemployment, employment and economic inactivity (All and excluding full-time education), Scotland 2010-2020</p>

Scotland's Labour Market - Monthly Briefing – August 2020

Scottish Government: Office of the Chief Economic Adviser

This document contains up-to-date statistical information concerning the labour market in Scotland from a range of official sources.

This document is part of a collection:

<https://www.gov.scot/collections/labour-market-statistics/>

HEADLINE ESTIMATES gender ages	YOUTH 16-24 YEARS gender UK regions International gender	LABOUR MARKET disability minority ethnic underemployment qualifications full-time education	UNEMPLOYMENT duration model based	ALTERNATIVE CLAIMANT COUNT all ages 16-24 years local authorities	CLAIMANT COUNT all ages 16-24 years local authorities	HMRC EARNINGS
--------------------------------------	--	--	---	--	--	---------------

**new
data**

<p>4: UNEMPLOYMENT</p> <p><i>by duration model-based by age</i></p>	<p>Table 4.1: Unemployment by duration, Annual Population Survey, Apr 2019 - Mar 2020 Table 4.2: Model Based Unemployment levels and rates by Local Authority Chart 4.1: ILO unemployment levels by age-group (16-64), Scotland</p>
<p>5: CLAIMANT COUNT</p> <p><i>16+ years</i></p> <p><i>16-24 years</i></p>	<p>y Chart 5.1: Unemployment, Alternative Claimant Count and Claimant Count levels, Scotland, January 2013 - July 2020 y Table 5.1: Claimant Count data for July 2020 - (Experimental Data) y Table 5.2: Claimant Count by local authority (Experimental data) y Chart 5.2: Change in Claimant Count rate by local authority (July 2019 to July 2020) y Tables 5.3 and 5.4: 16-24 Claimant Count levels and rates, Scotland and UK (Experimental data) y Table 5.5: 16-24 Claimant Count levels and rates by Local Authority, July 2020 (Experimental data)</p>
<p>6: ALTERNATIVE CLAIMANT COUNT</p> <p><i>16+ years</i></p> <p><i>16-24 years</i></p>	<p>Table 6.1: Alternative Claimant Count data for May 2020 - (Experimental Data) Table 6.2: Alternative Claimant Count by local authority (Experimental data) Tables 6.3 and 6.4: 16-24 Alternative Claimant Count levels and rates, Scotland and UK (Experimental data) Table 6.5: 16-24 Alternative Claimant Count levels and rates by Local Authority (Experimental data)</p>
<p>7: HMRC REAL TIME PAYE DATA</p> <p><i>Scotland and UK</i></p> <p><i>by region</i></p>	<p>y Table 7.1: Median monthly pay, Scotland and UK, June 2015 - June 2020 (Experimental statistics) y Chart 7.1: Median monthly pay, Scotland and UK, June 2015 - June 2020 (Experimental statistics) y Chart 7.2: Annual change in median monthly pay, June 2019 to June 2020, by Government Office Region (Experimental statistics)</p>
<p>BACKGROUND INFORMATION</p> <p><i>Notes - 1</i> <i>Notes - 2</i></p>	<p>Further information on Alternative Claimant Count, Claimant Count and Measures of Disability Further sources and contact details</p>

Table 1.1: Employment and unemployment, Apr-Jun 2020
seasonally adjusted

	Level ('000)							Rate						
	Level	change on Jan-Mar 2020		change on year		change on Apr-Jun 2008		Rate (%)	change on Jan-Mar 2020 (%pt)		change on year (%pt)		change on Apr-Jun 2008 (%pt)	
Employment* (levels 16+, rates 16-64)														
Scotland	2,651	-15	↓	-34	↓	97	↑	74.3	-0.4	↓	-1.1	↓	0.0	↔
England	27,903	-217	↓	151	↑	2,919	↑	76.9	-0.2	↓	0.5	↑	3.8	↑
Wales	1,500	19	↑	0	↔	117	↑	75.3	1.0	↑	0.3	↑	5.0	↑
Northern Ireland	870	-7	↓	-4	↓	69	↑	71.7	-0.7	↓	-0.4	↓	3.1	↑
UK	32,924	-220	↓	113	↑	3,202	↑	76.4	-0.2	↓	0.3	↑	3.5	↑
Unemployment** (16+)														
Scotland	124	11	↑	22	↑	11	↑	4.5	0.4	↑	0.8	↑	0.2	↑
England	1,151	-14	↓	12	↑	-309	↓	4.0	0.0	↔	0.0	↔	-1.6	↓
Wales	41	-8	↓	-20	↓	-35	↓	2.7	-0.5	↓	-1.3	↓	-2.5	↓
Northern Ireland	22	1	↑	-6	↓	-10	↓	2.5	0.1	↑	-0.6	↓	-1.4	↓
UK	1,338	-10	↓	9	↑	-342	↓	3.9	0.0	↔	0.0	↔	-1.4	↓

Source: Labour Force Survey, ONS

Note: *Denominator = all persons aged 16-64 **Denominator = total economically active (16+)

Charts 1.1 and 1.2: Employment and unemployment rate trends for Scotland and UK, Apr-Jun 2020

seasonally adjusted

Chart 1.1: Employment rate (16-64), Scotland and UK
seasonally adjusted

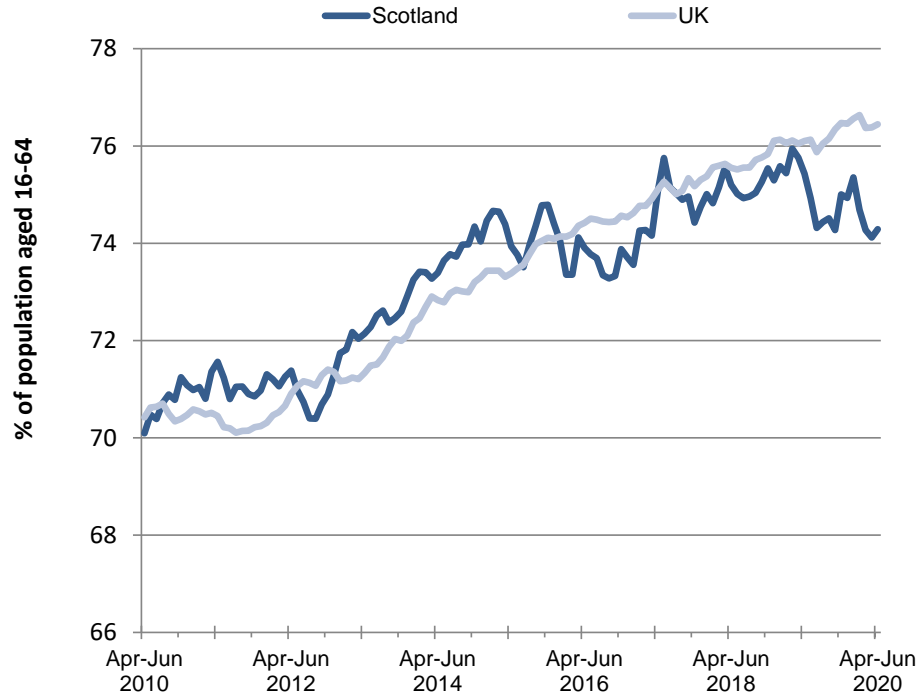
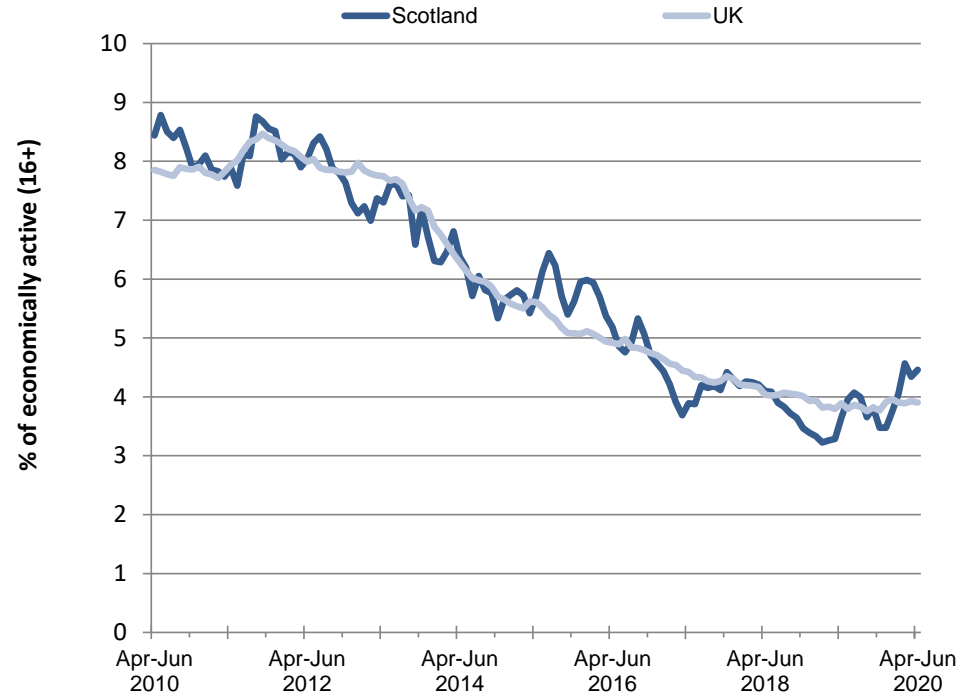
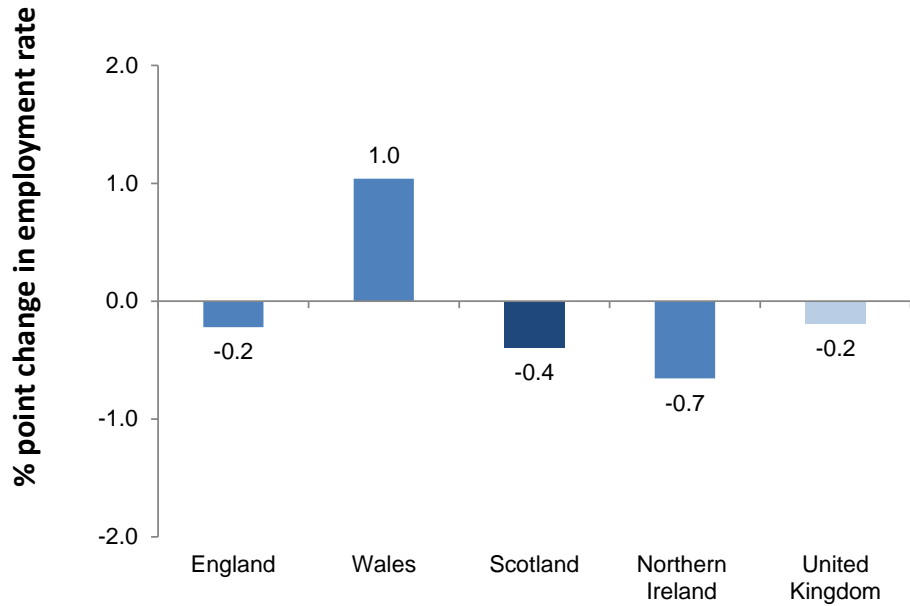


Chart 1.2: Unemployment rate (16+), Scotland and UK
seasonally adjusted



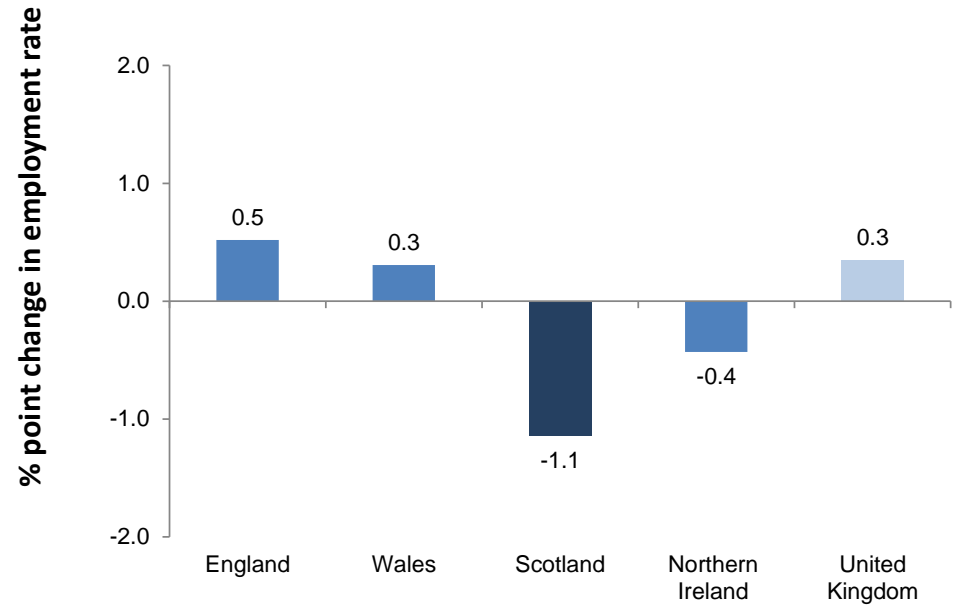
Charts 1.3 and 1.4: Employment and unemployment rate trends for Scotland and UK, Apr-Jun 2020 - change on quarter and year
seasonally adjusted

Chart 1.3: Employment rate (16-64) by UK country - change on quarter
seasonally adjusted



Source: Labour Force Survey, ONS

Chart 1.4: Employment rate (16-64) by UK country - change on year
seasonally adjusted



Source: Labour Force Survey, ONS

Source: Labour Force Survey, ONS

Note: Chart bars based on unrounded data. Chart labels rounded to one decimal place.

Charts 1.5 and 1.6: Unemployment rate (16+) by UK country, Apr-Jun 2020 - change on quarter and year
seasonally adjusted

Chart 1.5: Unemployment rate (16+) by UK country - change on quarter
seasonally adjusted

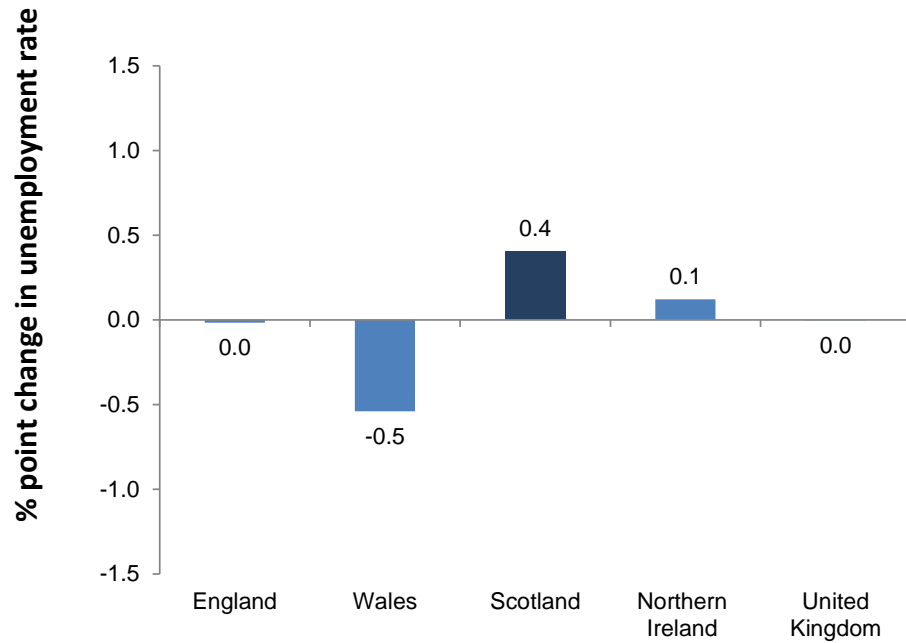
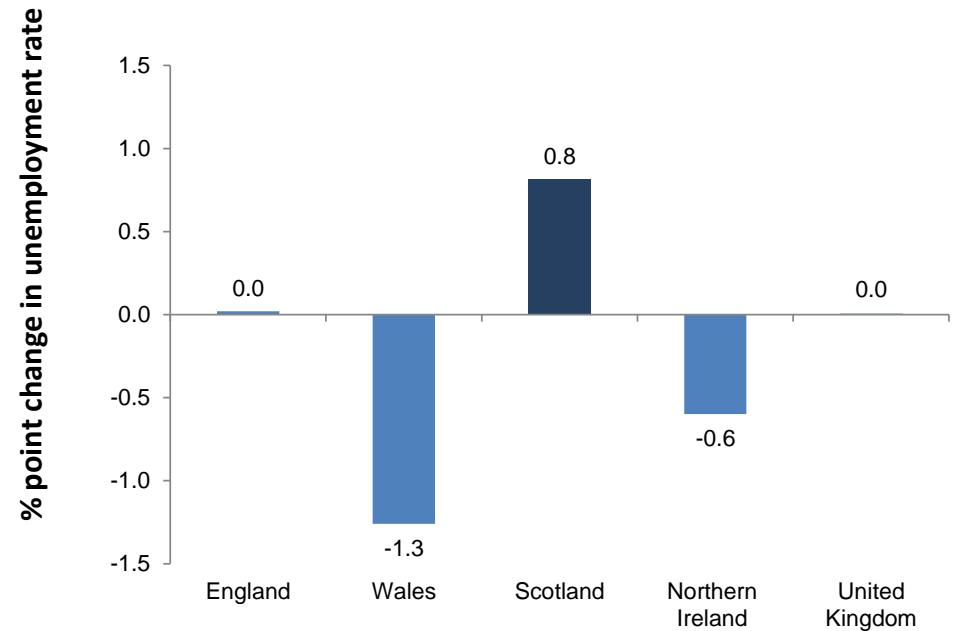


Chart 1.6: Unemployment rate (16+) by UK country - change on year
seasonally adjusted



Source: Labour Force Survey, ONS

Note: Chart bars based on unrounded data. Chart labels rounded to one decimal place.

Table 1.2: Economic activity and inactivity, Apr-Jun 2020
seasonally adjusted

	Level ('000)							Rate						
	Level	change on Jan-Mar 2020		change on year		change on Apr-Jun 2008		Rate (%)	change on Jan-Mar 2020 (%pt)		change on year (%pt)		change on Apr-Jun 2008 (%pt)	
Economic Activity* (levels 16+, rates 16-64)														
Scotland	2,775	-4	↓	-12	↓	108	↑	77.8	-0.1	↓	-0.5	↓	0.2	↑
England	29,054	-231	↓	163	↑	2,610	↑	80.1	-0.2	↓	0.5	↑	2.8	↑
Wales	1,541	11	↑	-20	↓	83	↑	77.4	0.6	↑	-0.8	↓	3.1	↑
Northern Ireland	892	-6	↓	-10	↓	59	↑	73.6	-0.6	↓	-0.9	↓	2.1	↑
UK	34,262	-230	↓	122	↑	2,860	↑	79.6	-0.2	↓	0.4	↑	2.6	↑
Economic Inactivity* (16-64)														
Scotland	763	3	↑	18	↑	7	↑	22.2	0.1	↑	0.5	↑	-0.2	↓
England	6,933	84	↑	-171	↓	-618	↓	19.9	0.2	↑	-0.5	↓	-2.8	↓
Wales	432	-11	↓	15	↑	-61	↓	22.6	-0.6	↓	0.8	↑	-3.1	↓
Northern Ireland	308	7	↑	11	↑	-18	↓	26.4	0.6	↑	0.9	↑	-2.1	↓
UK	8,435	82	↑	-127	↓	-690	↓	20.4	0.2	↑	-0.4	↓	-2.6	↓

Source: Labour Force Survey, ONS
 Note: *Denominator = all aged 16-64

Table 1.3: Unemployment by Government Office Region (LFS), Apr-Jun 2020
seasonally adjusted

	Level (000s)	change on Jan-Mar 2020 (000s)		change on year (000s)		Rate (%)	%pt change on Jan-Mar 2020		%pt change on year	
North East	68	-2	↓	0	↔	5.2	-0.2	↓	-0.2	↓
North West	128	-20	↓	-30	↓	3.5	-0.5	↓	-0.8	↓
Yorkshire and The Humber	101	-15	↓	-35	↓	3.8	-0.5	↓	-1.3	↓
East Midlands	107	13	↑	1	↑	4.3	0.6	↑	0.0	↔
West Midlands	130	-18	↓	-4	↓	4.4	-0.6	↓	-0.2	↓
East	122	2	↑	27	↑	3.8	0.1	↑	0.9	↑
London	235	-4	↓	13	↑	4.6	0.0	↔	0.1	↑
South East	157	15	↑	17	↑	3.3	0.3	↑	0.4	↑
South West	102	14	↑	23	↑	3.6	0.5	↑	0.9	↑
Wales	41	-8	↓	-20	↓	2.7	-0.5	↓	-1.3	↓
Northern Ireland	22	1	↑	-6	↓	2.5	0.1	↑	-0.6	↓
Scotland	124	11	↑	22	↑	4.5	0.4	↑	0.8	↑
United Kingdom	1,338	-10	↓	9	↑	3.9	0.0	↔	0.0	↔
England	1,151	-14	↓	12	↑	4.0	0.0	↔	0.0	↔

Source: Labour Force Survey, ONS

Table 1.4: Employment by UK Countries and Regions (LFS), Apr-Jun 2020
seasonally adjusted

	Level (000s)	change on Jan-Mar 2020 (000s)		change on year (000s)		Rate (%)	%pt change on Jan-Mar 2020 (000s)		%pt change on year	
North East	1,249	23	↑	45	↑	74.3	1.4	↑	3.5	↑
North West	3,541	-19	↓	56	↑	76.2	0.0	↔	1.5	↑
Yorkshire and The Humber	2,594	-7	↓	18	↑	74.4	0.5	↑	1.0	↑
East Midlands	2,371	-19	↓	5	↑	77.3	-0.9	↓	0.4	↑
West Midlands	2,819	11	↑	9	↑	75.0	0.1	↑	0.7	↑
East	3,076	-51	↓	-60	↓	77.9	-0.2	↓	-1.3	↓
London	4,831	-57	↓	164	↑	76.5	-0.4	↓	1.9	↑
South East	4,657	-71	↓	-4	↓	79.7	-0.4	↓	0.1	↑
South West	2,764	-29	↓	-83	↓	78.1	-1.1	↓	-2.5	↓
Wales	1,500	19	↑	0	↔	75.3	1.0	↑	0.3	↑
Northern Ireland	870	-7	↓	-4	↓	71.7	-0.7	↓	-0.4	↓
Scotland	2,651	-15	↓	-34	↓	74.3	-0.4	↓	-1.1	↓
United Kingdom	32,924	-220	↓	113	↑	76.4	-0.2	↓	0.3	↑
England	27,903	-217	↓	151	↑	76.9	-0.2	↓	0.5	↑

Source: Labour Force Survey, ONS

Charts 1.7 and 1.8: Employment rate (16-64) for Government Office Regions, Apr-Jun 2020 - change on quarter and year
seasonally adjusted

Chart 1.7: Employment rate (16-64) by Government Office Region - change on quarter
seasonally adjusted

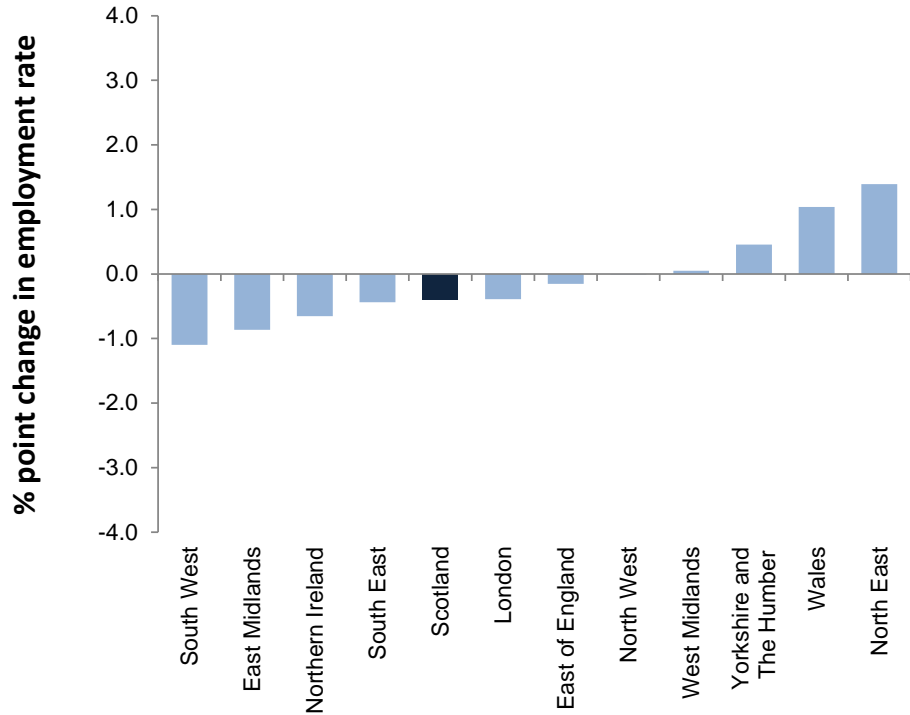
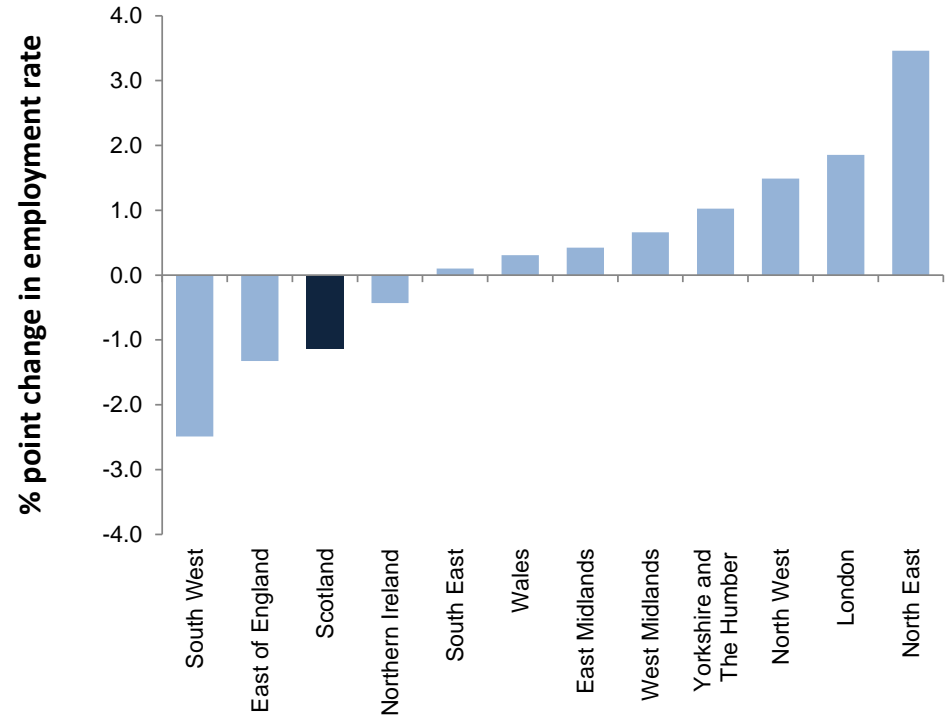
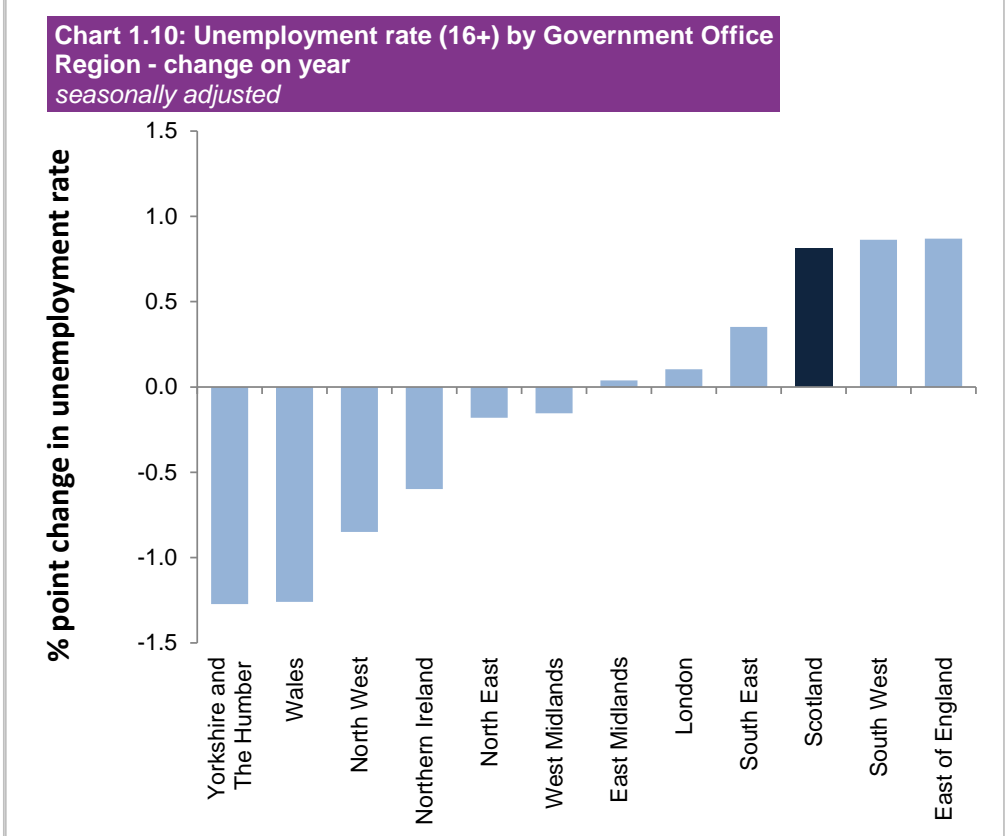
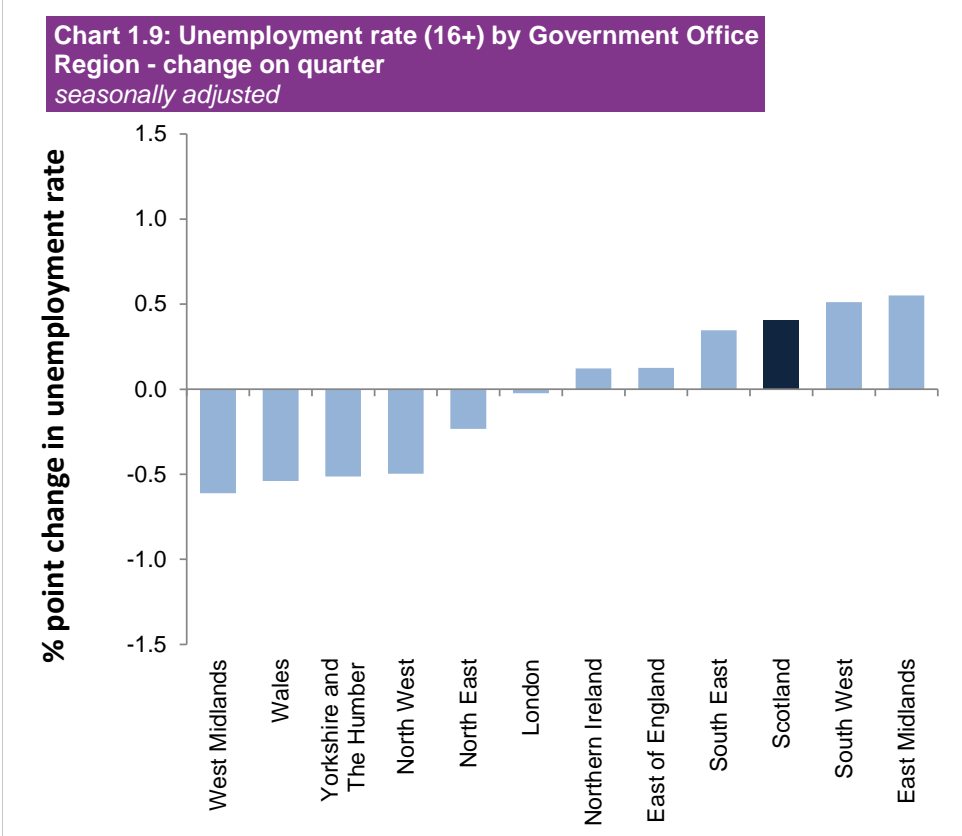


Chart 1.8: Employment rate (16-64) by Government Office Region - change on year
seasonally adjusted



Source: Labour Force Survey, ONS

Charts 1.9 and 1.10: Unemployment rate (16+) for Government Office Regions, Apr-Jun 2020 - change on quarter and year
seasonally adjusted



Source: Labour Force Survey, ONS

Table 1.5: Employment, ILO unemployment and inactivity rates by gender, Apr-Jun 2020
seasonally adjusted

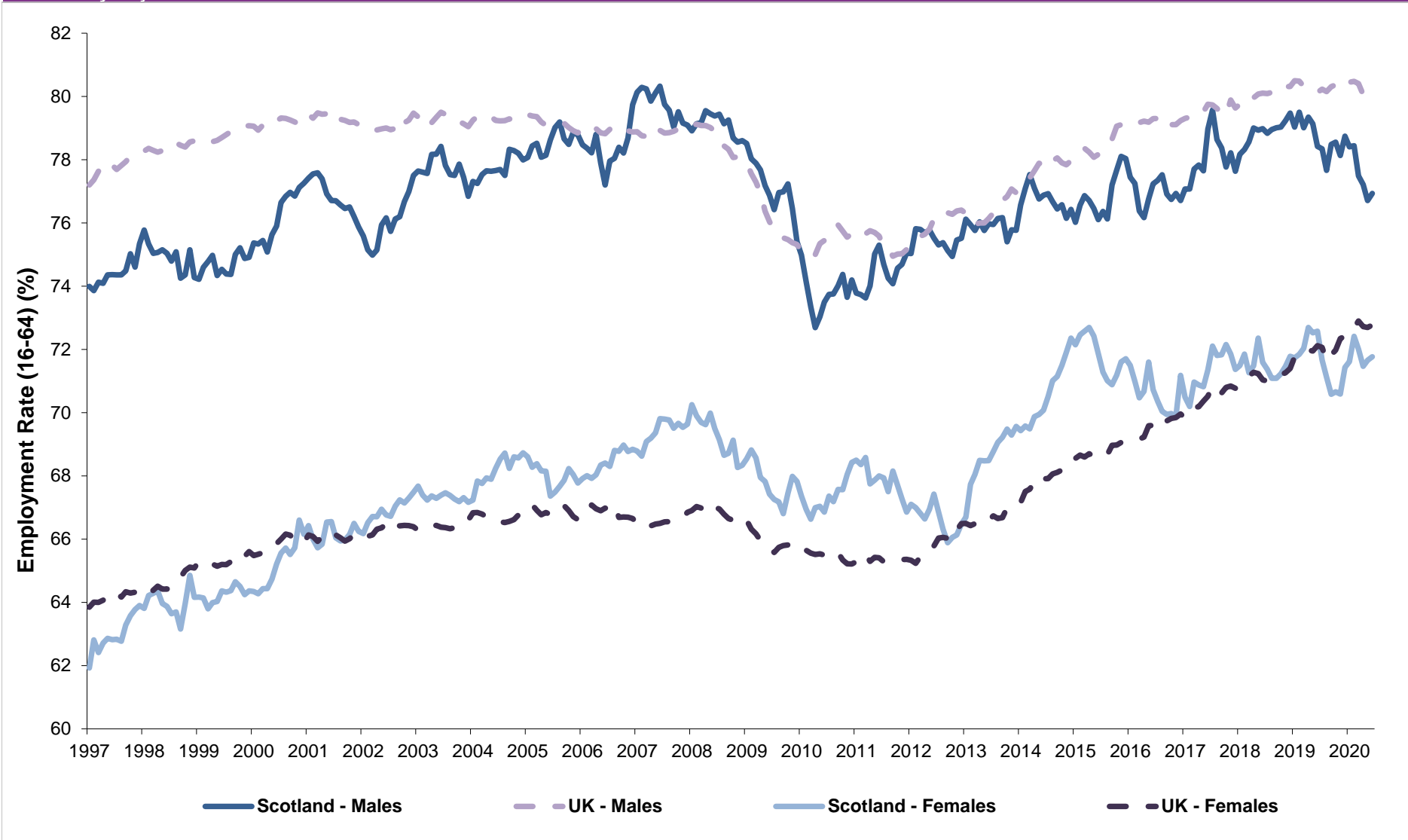
Gender	Scotland						UK				
	Rate (%)	Change on quarter (%pts)	Change on year (%pts)	Rate (%)	Change on quarter (%pts)	Change on year (%pts)	Rate (%)	Change on quarter (%pts)	Change on year (%pts)		
Employment Rate*	People	74.3	-0.4 ↓	-1.1 ↓	76.4	-0.2 ↓	0.3 ↑				
	Men	76.9	-0.6 ↓	-1.5 ↓	80.2	-0.3 ↓	0.0 ↔				
	Women	71.8	-0.2 ↓	-0.8 ↓	72.8	-0.1 ↓	0.7 ↑				
Unemployment Rate**	People	4.5	0.4 ↑	0.8 ↑	3.9	0.0 ↔	0.0 ↔				
	Men	4.7	0.7 ↑	0.3 ↑	4.1	-0.1 ↓	0.0 ↔				
	Women	4.2	0.1 ↑	1.3 ↑	3.7	0.1 ↑	0.1 ↑				
Inactivity Rate*	People	22.2	0.1 ↑	0.5 ↑	20.4	0.2 ↑	-0.4 ↓				
	Men	19.2	0.0 ↔	1.3 ↑	16.4	0.3 ↑	0.0 ↔				
	Women	25.0	0.2 ↑	-0.2 ↓	24.3	0.1 ↑	-0.7 ↓				

Source: Labour Force Survey, ONS

Note: * Denominator = population of aged 16-64

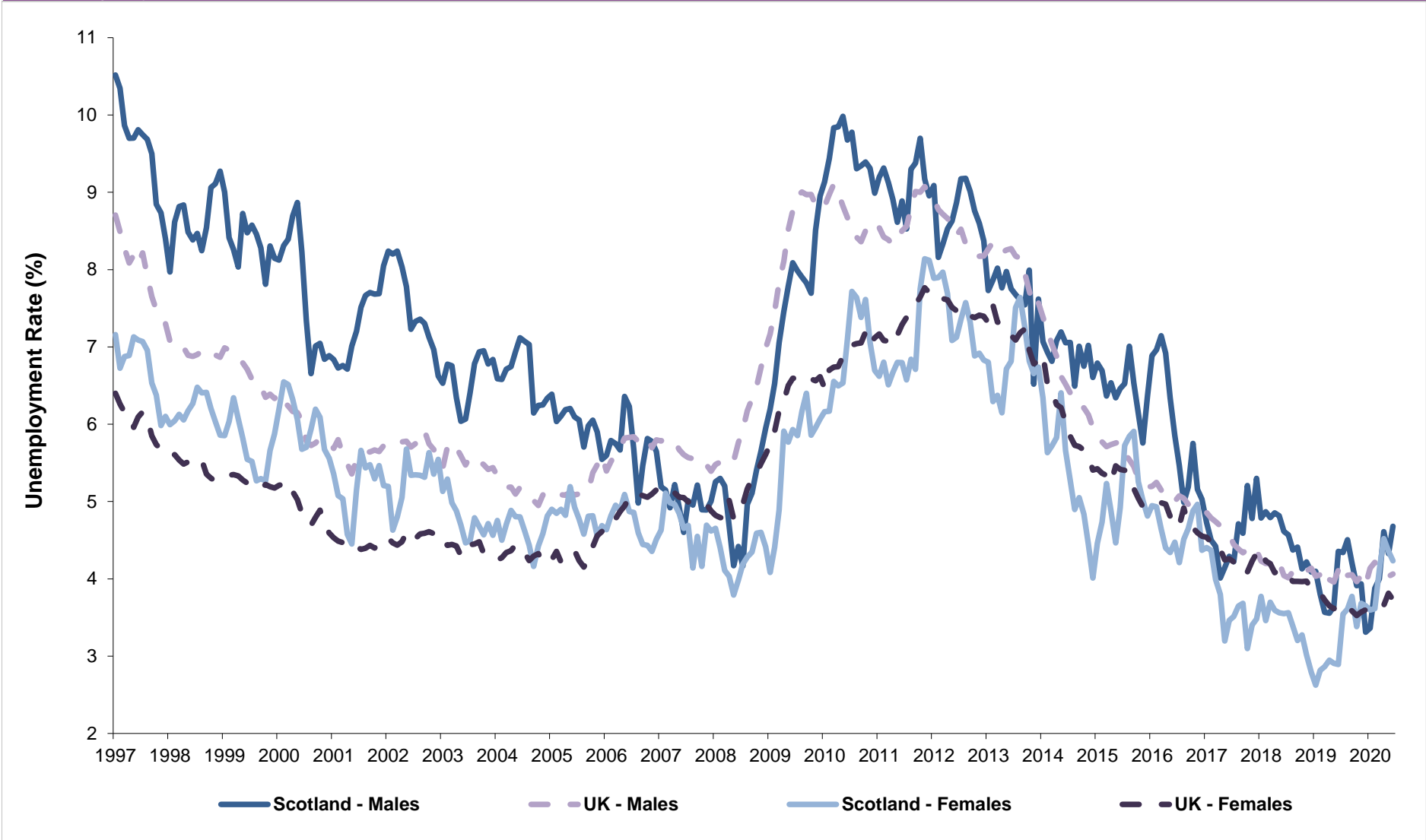
**Denominator = Economically active population

Chart 1.11: Employment rate by gender (16-64), Scotland and UK, 1997-2020
seasonally adjusted



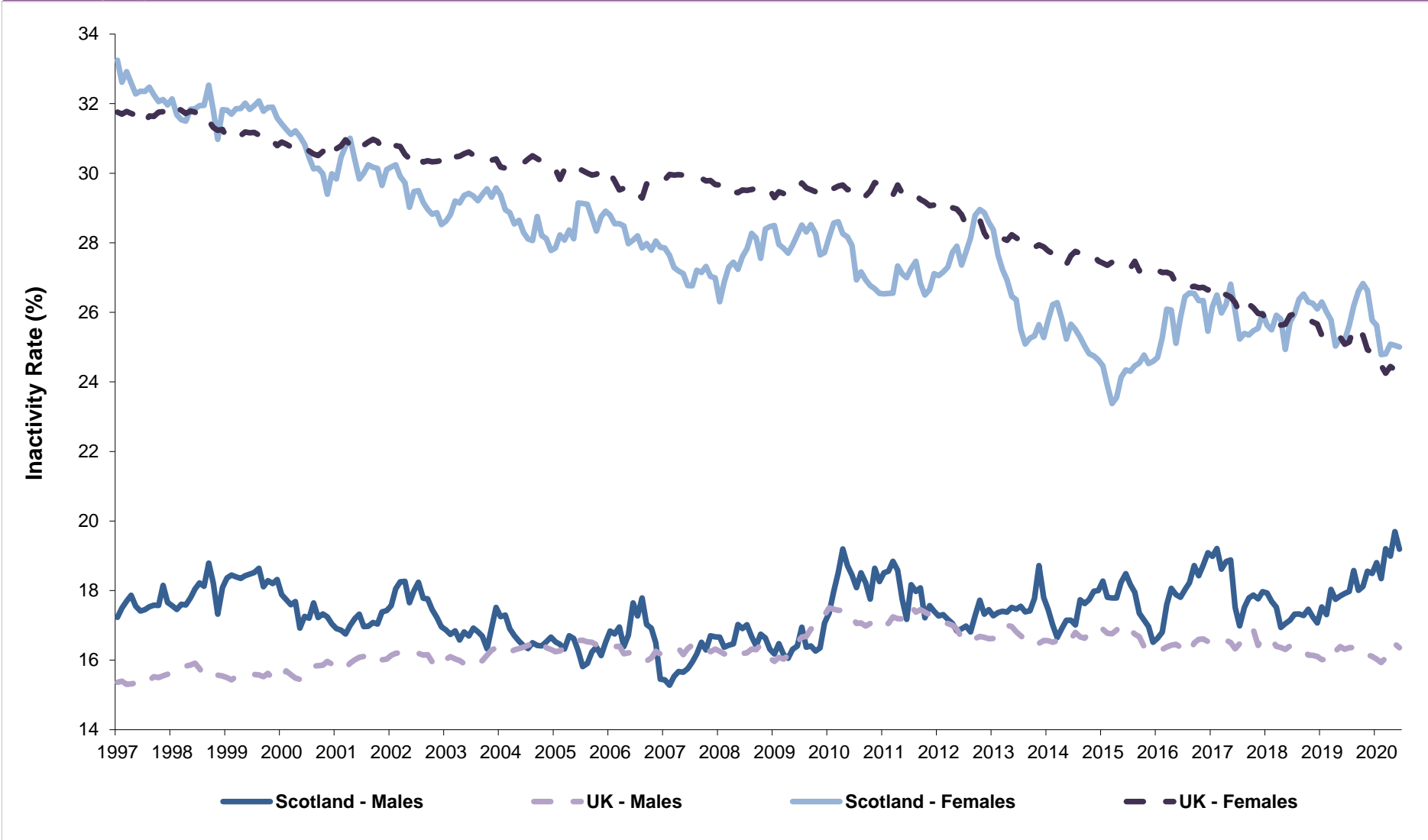
Source: Labour Force Survey, ONS

Chart 1.12: Unemployment rate by gender (16+), Scotland and UK, 1997-2020
seasonally adjusted



Source: Labour Force Survey, ONS

Chart 1.13: Inactivity rate by gender (16-64), Scotland, UK 1997-2020
seasonally adjusted



Source: Labour Force Survey, ONS

Table 1.6a: Employment, ILO unemployment and inactivity by age group, Scotland and UK, Annual Population Survey: Apr 2019 - Mar 2020

	Age Group	Scotland					UK				
		Rate (%)	change on year (%pt)		change on Apr 2009 - Mar 2010		Rate (%)	change on year (%pt)		change on Apr 2009 - Mar 2010	
Employment Rate	16-24	54.8	-3.6	↓	-1.2	↓	54.0	0.1	↑	3.2	↑
	25-34	82.6	1.7	↑	4.3	↑	84.2	0.8	↑	6.7	↑
	35-49	83.5	-0.7	↓	2.4	↑	85.2	0.4	↑	4.3	↑
	50-64	70.9	1.2	↑	6.0	↑	72.5	0.9	↑	8.0	↑
	65+	8.9	0.3	↑	2.5	↑	11.0	0.5	↑	3.3	↑
Unemployment Rate	16-24	8.8	-1.0	↓	-8.1	↓	11.7	0.2	↑	-8.2	↓
	25-34	3.3	-1.2	↓	-4.8	↓	3.4	-0.3	↓	-4.5	↓
	35-49	2.4	-0.4	↓	-2.8	↓	2.5	-0.2	↓	-3.0	↓
	50-64	2.1	-0.8	↓	-2.1	↓	2.5	-0.4	↓	-2.1	↓
	65+	*	*	-	*	-	1.6	0.1	↑	-1.0	↓
Inactivity Rate	16-24	39.9	4.6	↑	7.3	↑	38.9	-0.2	↓	2.2	↑
	25-34	14.6	-0.7	↓	-0.2	↓	12.9	-0.6	↓	-3.0	↓
	35-49	14.4	1.1	↑	0.0	↔	12.6	-0.2	↓	-1.8	↓
	50-64	27.6	-0.7	↓	-4.7	↓	25.6	-0.7	↓	-6.8	↓
	65+	91.0	-0.2	↓	-2.4	↓	88.8	-0.5	↓	-3.3	↓

Source: Annual Population Survey, ONS

* data not available

** Denominator = population in age group

*** Denominator = Economically active population in age group (where economically active is defined as those in employment plus those who are unemployed)

Table 1.6b: Employment, ILO unemployment and inactivity by age group, Scotland and UK, Labour Force Survey: Apr-Jun 2020

Official Statistics - not seasonally adjusted

	Age Group	Scotland					UK				
		Rate (%)	Change on year (%pt)		Change on 2008 (%pt)		Rate (%)	Change on year (%pt)		Change on 2008 (%pt)	
Employment Rate**	16-24	52.7	-6.9	↓	-5.8	↓	53.0	-1.0	↓	-3.1	↓
	25-34	80.5	-3.6	↓	-0.6	↓	85.5	1.1	↑	4.9	↑
	35-49	85.0	-0.3	↓	-0.6	↓	86.0	0.7	↑	3.4	↑
	50-64	72.1	2.7	↑	6.4	↑	72.7	0.1	↑	7.0	↑
	65+	9.1	0.2	↑	3.7	↑	10.4	-1.0	↓	3.1	↑
Unemployment Rate***	16-24	13.5	6.1	↑	0.5	↑	12.4	1.2	↑	-1.7	↓
	25-34	4.8	0.7	↑	0.3	↑	3.4	0.0	↔	-1.5	↓
	35-49	2.5	0.2	↑	0.3	↑	2.3	-0.3	↓	-1.2	↓
	50-64	2.7	-0.1	↓	0.6	↑	2.5	-0.2	↓	-0.5	↓
	65+	*	*	-	*	-	1.4	0.2	↑	-0.5	↓
Inactivity Rate**	16-24	39.1	3.5	↑	6.4	↑	39.5	0.4	↑	4.9	↑
	25-34	15.5	3.2	↑	0.3	↑	11.5	-1.1	↓	-3.8	↓
	35-49	12.8	0.2	↑	0.4	↑	12.0	-0.5	↓	-2.4	↓
	50-64	25.9	-2.7	↓	-7.0	↓	25.5	0.0	↔	-6.9	↓
	65+	90.7	-0.3	↓	-3.8	↓	89.5	1.0	↑	-3.1	↓

Source: Labour Force Survey, ONS

* data not available

** Denominator = population in age group

*** Denominator = Economically active population in age group (where economically active is defined as those in employment plus those who are unemployed).

Quality indicator

Shaded estimates are based on a small sample size. This may result in a less precise estimates, which should be used with caution. Unshaded estimates are based on a larger sample size. This is likely to result in estimates of higher precision, although they will still be subject to some sampling variability.

Note on data sources: The Labour Force Survey (LFS) is a survey of households collected and published by the Office for National Statistics (ONS). Further information on reliability can be accessed in the ONS publication at:

<https://www.ons.gov.uk/employmentandlabourmarket/peopleinwork/employmentandemployeetypes/methodologies/measuringandreportingreliabilityoflabourforcesurveyandannualpopulationurveyestimates>

The Annual Population Survey estimates are classified as National Statistics as they are based on a larger sample size, but are not as current as LFS estimates. Regional estimates for the unemployment rate may be quite volatile, which needs to be allowed for when considering the pattern of change over time and sample sizes are also smaller for sub groups such as 16-24 year olds which can also affect volatility. Sampling variability information is published at:

<https://www.ons.gov.uk/employmentandlabourmarket/peopleinwork/employmentandemployeetypes/datasets/samplingvariabilityandrevisionssummaryforregionallabourmarketstatistics02>

Table 2.1a: Employment, ILO unemployment and inactivity for 16-24 age group, Scotland and UK, Annual Population Survey (APS): Apr 2019 - Mar 2020

	Level ('000)					Rate				
	Level	Change on year		change on Apr 2009 - Mar 2010		Rate (%)	Change on year (%pts)		change on Apr 2009 - Mar 2010	
Employment*										
Scotland	309	-26	↓	-35	↓	54.8	-3.6	↓	-1.2	↓
UK	3,723	-37	↓	34	↑	54.0	0.1	↑	3.2	↑
ILO Unemployment **										
Scotland	30	-7	↓	-40	↓	8.8	-1.0	↓	-8.1	↓
UK	493	4	↑	-421	↓	11.7	0.2	↑	-8.2	↓
Inactivity *										
Scotland	225	22	↑	25	↑	39.9	4.6	↑	7.3	↑
UK	2,680	-42	↓	16	↑	38.9	-0.2	↓	2.2	↑

Source: Annual Population Survey (APS), ONS

Notes: *denominator = 16-24 population; ** denominator = economically active population aged 16-24

Table 2.1b: Employment, ILO unemployment and inactivity for 16-24 age group, Scotland and UK, Labour Force Survey (LFS): Apr-Jun 2020
not seasonally adjusted (Official Statistics)

	Level ('000)					Rate				
	Level	Change on year		Change on 2008		Rate (%)	Change on year (%pts)		Change on 2008 (%pt)	
Employment*										
Scotland	294	-44	↓	-60	↓	52.7	-6.9	↓	-5.8	↓
UK	3,640	-96	↓	-416	↓	53.0	-1.0	↓	-3.1	↓
ILO Unemployment **										
Scotland	46	19	↑	-7	↓	13.5	6.1	↑	0.5	↑
UK	516	43	↑	-151	↓	12.4	1.2	↑	-1.7	↓
Inactivity *										
Scotland	218	16	↑	20	↑	39.1	3.5	↑	6.4	↑
UK	2,712	7	↑	210	↑	39.5	0.4	↑	4.9	↑

Source: Labour Force Survey (LFS), ONS

*rate based on total population aged 16-24

**rate=ILO unemployed/(employed+ ILO unemployed)

Quality indicator

Shaded estimates are based on a small sample size. This may result in a less precise estimates, which should be used with caution.

Unshaded estimates are based on a larger sample size. This is likely to result in estimates of higher precision, although they will still be subject to some sampling variability.

Note on data sources: The Labour Force Survey (LFS) is a survey of households collected and published by the Office for National Statistics (ONS). Further information on reliability can be accessed in the ONS publication at: <https://www.ons.gov.uk/employmentandlabourmarket/peopleinwork/employmentandemployeetypes/methodologies/measuringandreportingreliabilityoflabourforcesurveyandannualpopulationsurveyestimates>

The Annual Population Survey estimates are classified as National Statistics as they are based on a larger sample size, but are not as current as LFS estimates. Regional estimates for the unemployment rate maybe quite volatile, which needs to be allowed for when considering the pattern of change over time and sample sizes are also smaller for sub groups such as 16-24 year olds which can also affect volatility. Sampling variability information is published at:

<https://www.ons.gov.uk/employmentandlabourmarket/peopleinwork/employmentandemployeetypes/datasets/samplingvariabilityandrevisionsummaryforregionallabourmarketstatistics02>

Charts 2.1 and 2.2: Youth employment and unemployment, Scotland and UK (APS)

Chart 2.1: Youth employment rate, *not seasonally adjusted*

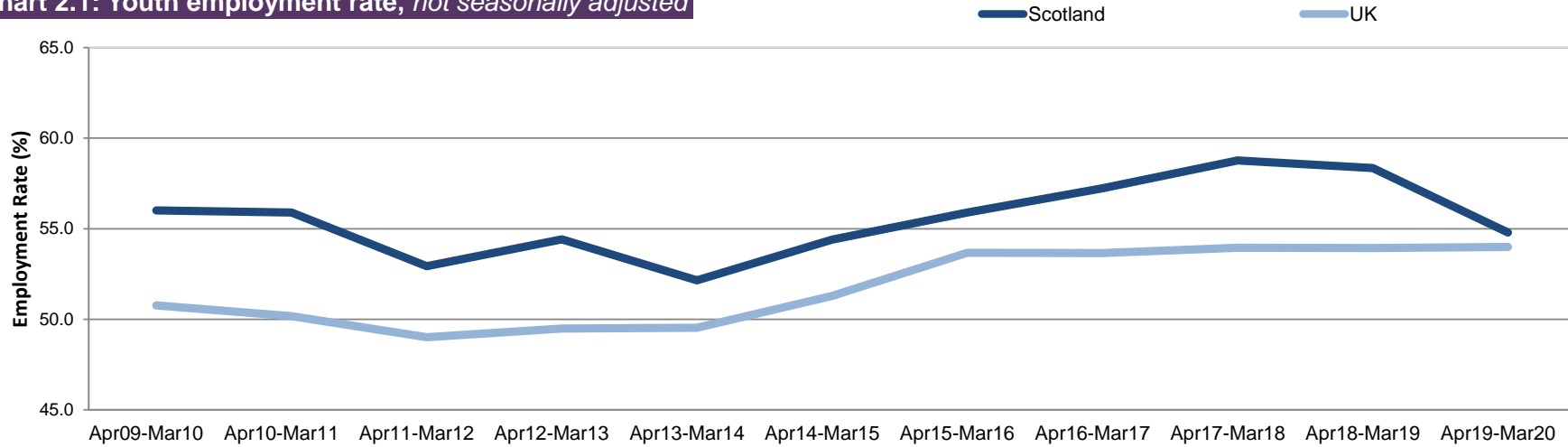
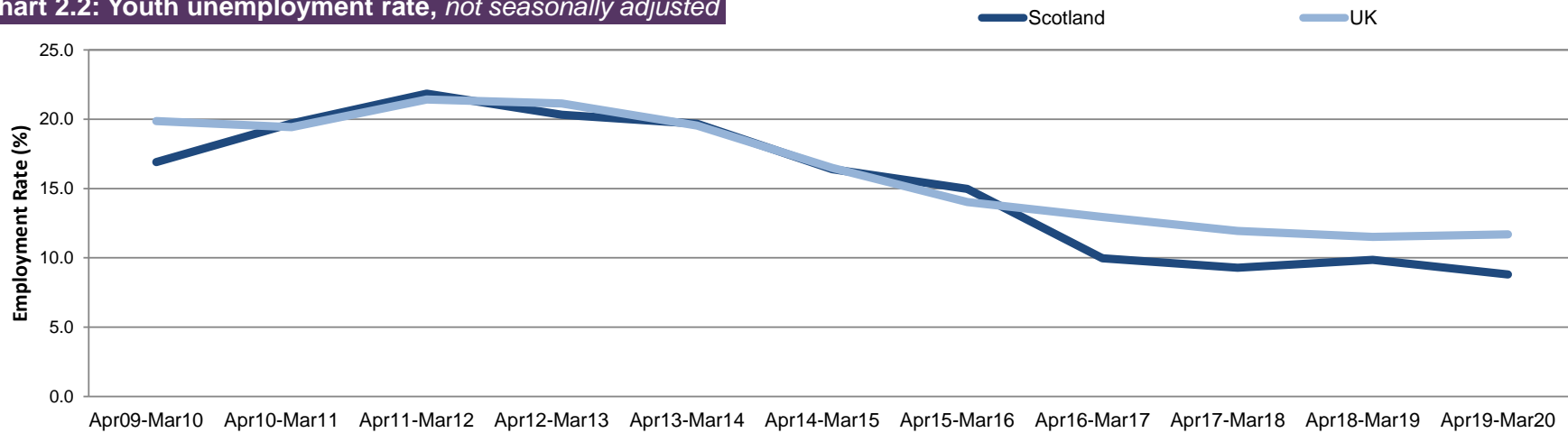


Chart 2.2: Youth unemployment rate, *not seasonally adjusted*



Source: Annual Population Survey, ONS

Table 2.2: Employment, ILO unemployment and inactivity for 16-24 age group by gender, Scotland and UK (APS), Apr 2019 - Mar 2020

Scotland

	Level ('000)					Rate				
	Level	Change on year		change on Apr 2009 - Mar 2010		Rate (%)	Change on year (%pts)		change on Apr 2009 - Mar 2010	
Employment*										
Male	155	-18	↓	-19	↓	54.8	-5.2	↓	-2.3	↓
Female	154	-8	↓	-16	↓	54.8	-2.0	↓	-0.1	↓
ILO Unemployment **										
Male	16	-5	↓	-26	↓	9.3	-1.5	↓	-10.2	↓
Female	14	-2	↓	-14	↓	8.3	-0.5	↓	-5.8	↓
Inactivity *										
Male	112	18	↑	23	↑	39.6	6.8	↑	10.5	↑
Female	113	5	↑	2	↑	40.3	2.5	↑	4.2	↑

UK

	Level ('000)					Rate				
	Level	Change on year		change on Apr 2009 - Mar 2010		Rate (%)	Change on year (%pts)		change on Apr 2009 - Mar 2010	
Employment*										
Male	1,888	-56	↓	45	↑	53.6	-1.0	↓	2.9	↑
Female	1,835	19	↑	-11	↓	54.4	1.1	↑	3.5	↑
ILO Unemployment **										
Male	287	6	↑	-264	↓	13.2	0.6	↑	-9.8	↓
Female	206	-2	↓	-157	↓	10.1	-0.2	↓	-6.3	↓
Inactivity *										
Male	1,348	12	↑	105	↑	38.3	0.7	↑	4.1	↑
Female	1,332	-54	↓	-89	↓	39.5	-1.2	↓	0.3	↑

Source: Annual Population Survey, ONS

Notes: *denominator = 16-24 population; ** denominator = economically active population aged 16-24

Charts 2.3 and 2.4: Youth employment and unemployment by gender, Scotland (APS)

Chart 2.3: Youth employment rate by gender

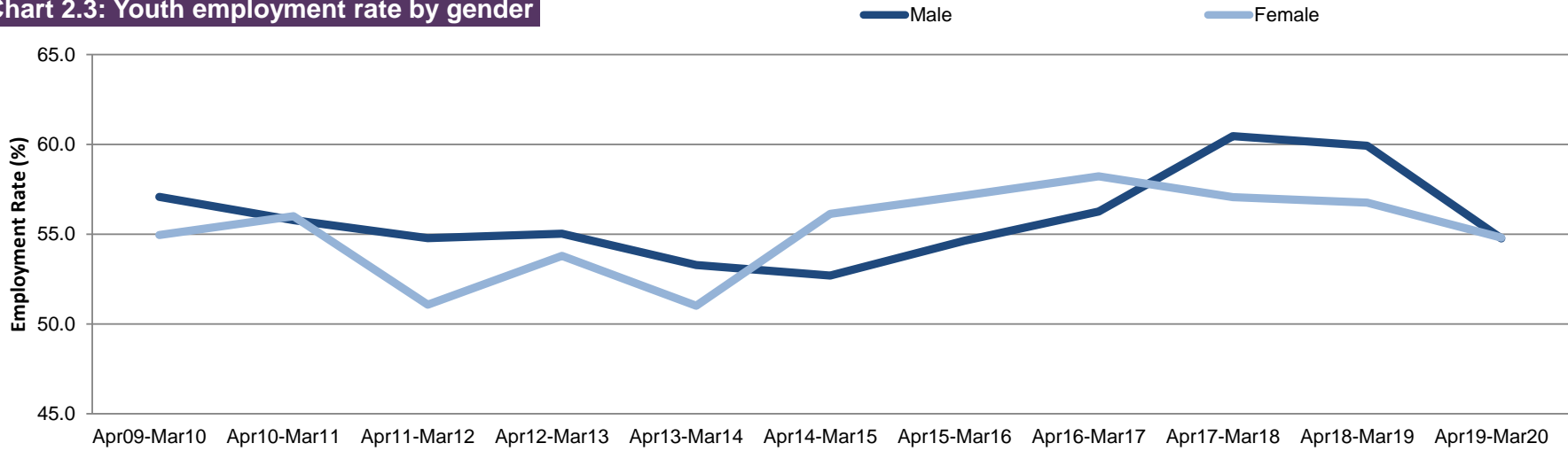
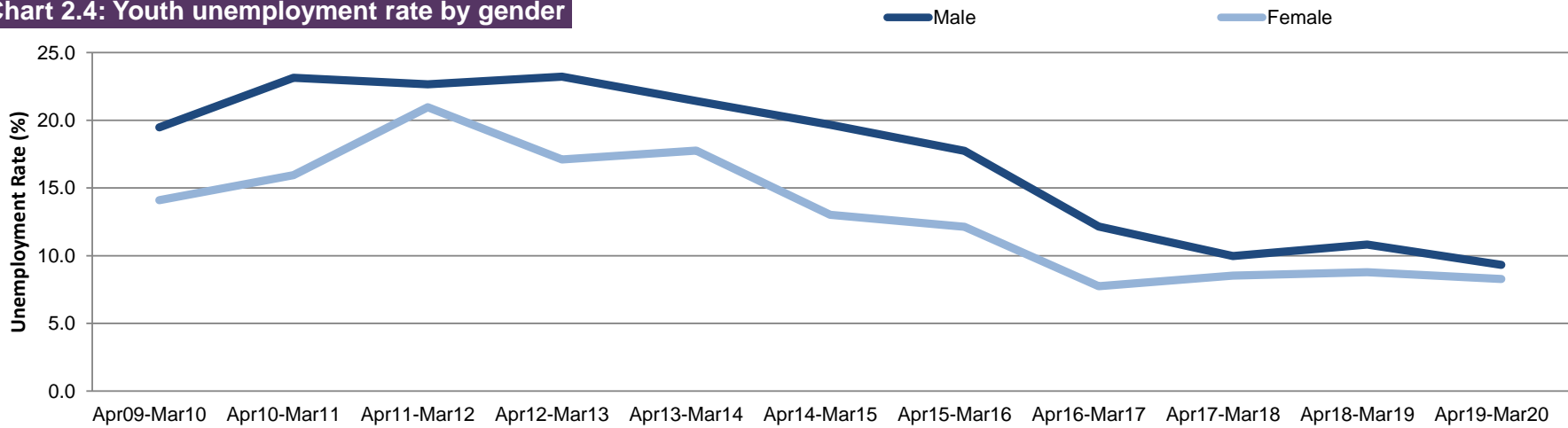


Chart 2.4: Youth unemployment rate by gender



Source: Annual Population Survey, ONS

Table 2.3: Youth Unemployment (16-24) by Government Office Region (LFS), Apr-Jun 2020
not seasonally adjusted (Official Statistics)

	Level (000's)	change on year		change on 2008		Rate (%)	%pt change on year		%pt change on 2008	
North East	30	11	↑	-4	↓	15.3	3.6	↑	-2.3	↓
North West	49	-13	↓	-34	↓	10.2	-3.5	↓	-4.9	↓
Yorkshire and The Humber	34	-25	↓	-35	↓	8.9	-7.3	↓	-6.8	↓
East Midlands	47	6	↑	-7	↓	14.2	2.0	↑	-1.4	↓
West Midlands	58	7	↑	-6	↓	16.4	3.0	↑	0.9	↑
East	45	14	↑	-12	↓	12.1	3.9	↑	-1.1	↓
South East	69	-4	↓	-32	↓	14.9	-0.8	↓	-3.5	↓
London	59	14	↑	-16	↓	10.4	2.5	↑	-1.4	↓
South West	55	23	↑	22	↑	14.7	6.8	↑	6.2	↑
Wales	19	-4	↓	-10	↓	9.5	-0.6	↓	-2.5	↓
Northern Ireland	6	-5	↓	-8	↓	5.6	-4.2	↓	-5.6	↓
Scotland	46	19	↑	-7	↓	13.5	6.1	↑	0.5	↑
United Kingdom	516	43	↑	-151	↓	12.4	1.2	↑	-1.7	↓
England	445	33	↑	-125	↓	12.7	0.9	↑	-1.8	↓

Source: Labour Force Survey, ONS

Table 2.4: Youth Employment (16-24) by UK Countries and Regions (LFS), Apr-Jun 2020
not seasonally adjusted (Official Statistics)

	Level (000's)	change on year		change on 2008		Rate (%)	%pt change on year		%pt change on 2008	
North East	168	21	↑	5	↑	58.5	7.7	↑	6.7	↑
North West	429	41	↑	-36	↓	56.3	5.9	↑	1.5	↑
Yorkshire and The Humber	345	40	↑	-22	↓	56.5	6.9	↑	-0.4	↓
East Midlands	283	-13	↓	-9	↓	55.1	-2.0	↓	-1.0	↓
West Midlands	294	-33	↓	-51	↓	46.1	-4.8	↓	-7.0	↓
East	323	-24	↓	-46	↓	55.7	-3.8	↓	-5.2	↓
South East	394	3	↑	-56	↓	42.7	0.3	↑	-4.0	↓
London	513	-14	↓	-55	↓	56.8	-1.2	↓	-5.0	↓
South West	318	-53	↓	-41	↓	57.0	-9.2	↓	-6.5	↓
Wales	177	-24	↓	-31	↓	52.6	-6.3	↓	-5.0	↓
Northern Ireland	102	2	↑	-13	↓	51.2	1.5	↑	0.6	↑
Scotland	294	-44	↓	-60	↓	52.7	-6.9	↓	-5.8	↓
United Kingdom	3,640	-96	↓	-416	↓	53.0	-1.0	↓	-3.1	↓
England	3,067	-31	↓	-312	↓	53.1	-0.2	↓	-2.9	↓

Source: Labour Force Survey, ONS

Quality indicator

Shaded estimates are based on a small sample size. This may result in a less precise estimates, which should be used with caution.

Unshaded estimates are based on a larger sample size. This is likely to result in estimates of higher precision, although they will still be subject to some sampling variability.

Note on data sources: The Labour Force Survey (LFS) is a survey of households collected and published by the Office for National Statistics (ONS). Further information on reliability can be accessed in the ONS publication at: <https://www.ons.gov.uk/employmentandlabourmarket/peopleinwork/employmentandemployeetypes/methodologies/measuringandreportingreliabilityoflabourforcesurveyandannualpopulationsurveyestimates>

The Annual Population Survey estimates are classified as National Statistics as they are based on a larger sample size, but are not as current as LFS estimates. Regional estimates for the unemployment rate maybe quite volatile, which needs to be allowed for when considering the pattern of change over time and sample sizes are also smaller for sub groups such as 16-24 year olds which can also affect volatility. Sampling variability information is published at: <https://www.ons.gov.uk/employmentandlabourmarket/peopleinwork/employmentandemployeetypes/datasets/samplingvariabilityandrevisionssummaryforregionallabourmarketstatistics02>

Table 3.1a: Employment rates and levels of the population aged 16-64 by disability status, Scotland 2014-2020 (APS)

	Equality Act Disabled Employment		Not Equality Act Disabled Employment		Disabled Employment Rate Gap (%pt)
	Rate	Level (000s)	Rate	Level (000s)	
Apr 2013 - Mar 2014	39.7	245	78.4	2,180	38.7
Apr 2014 - Mar 2015	42.0	254	79.6	2,224	37.5
Apr 2015 - Mar 2016	41.7	262	80.0	2,222	38.3
Apr 2016 - Mar 2017	43.3	286	80.7	2,225	37.4
Apr 2017 - Mar 2018	45.7	296	81.1	2,248	35.3
Apr 2018 - Mar 2019	45.9	312	81.7	2,241	35.8
Apr 2019 - Mar 2020	48.5	346	81.4	2,204	33.0
<i>Change on year</i>	2.6	34	-0.2	-38	-2.8

Source: Annual Population Survey, ONS

Table 3.1b: Employment rates and levels of the population aged 16-64 by disability status, Scotland 2013-2020 (LFS)

not seasonally adjusted

	Equality Act Disabled Employment		Not Equality Act Disabled Employment		Disabled Employment Rate Gap (%pt)
	Rate	Level (000s)	Rate	Level (000s)	
Apr-Jun 2013	40.8	245	78.9	2,205	38.1
Apr-Jun 2014	41.7	241	80.0	2,255	38.4
Apr-Jun 2015	43.7	272	81.0	2,255	37.2
Apr-Jun 2016	40.9	250	81.4	2,277	40.5
Apr-Jun 2017	43.0	262	82.4	2,320	39.4
Apr-Jun 2018	47.3	309	82.2	2,271	34.9
Apr-Jun 2019	48.6	337	82.7	2,258	34.1
Apr-Jun 2020	51.7	362	81.0	2,199	29.3
<i>Change on year</i>	3.0	25	-1.7	-58	-4.8

Source: Labour Force Survey, ONS

Questions used to derive current disability status of a person were changed in the April-June 2013 dataset. Subsequent datasets are therefore not directly comparable to equivalent periods in earlier years. See Notes (p43) for further information.

Note on data sources: Information is shown from the Labour Force Survey (LFS) and the Annual Population Survey (APS) for the same measure. Although the LFS is more timely, the APS is based on a larger sample size and therefore has a higher degree of reliability.

Table 3.2: Employment rates and levels of the population aged 16-64 by ethnicity and gender, Scotland, 2012 - 2020
not seasonally adjusted

All

	White Employment		Minority Ethnic Employment		Ethnicity Employment Rate Gap (%pt)
	Rate	Level (000s)	Rate	Level (000s)	
Apr 2011 - Mar 2012	70.8	2,337	60.8	78	10.1
Apr 2012 - Mar 2013	71.0	2,336	60.1	78	10.9
Apr 2013 - Mar 2014	71.8	2,363	58.6	72	13.2
Apr 2014 - Mar 2015	73.5	2,402	58.3	87	15.2
Apr 2015 - Mar 2016	73.5	2,384	58.6	92	14.9
Apr 2016 - Mar 2017	74.2	2,414	59.2	104	14.9
Apr 2017 - Mar 2018	75.1	2,457	57.7	97	17.4
Apr 2018 - Mar 2019	75.4	2,464	57.4	100	18
Apr 2019 - Mar 2020	75.5	2,442	59.3	123	16.2
<i>Change on year</i>	<i>0.1</i>	<i>-22</i>	<i>2.0</i>	<i>23</i>	<i>-1.9</i>

Male

	White Employment		Minority Ethnic Employment		Ethnicity Employment Rate Gap (%pt)
	Rate	Level (000s)	Rate	Level (000s)	
Apr 2011 - Mar 2012	75.1	1,207	72.3	49	2.8
Apr 2012 - Mar 2013	74.5	1,195	73.3	48	1.2
Apr 2013 - Mar 2014	75.3	1,210	66.5	41	8.9
Apr 2014 - Mar 2015	76.7	1,223	69.7	52	7.1
Apr 2015 - Mar 2016	76.2	1,210	75.3	55	0.9
Apr 2016 - Mar 2017	77.1	1,230	73.3	60	3.8
Apr 2017 - Mar 2018	78.5	1,254	68.5	57	10.0
Apr 2018 - Mar 2019	78.5	1,254	70.9	59	7.7
Apr 2019 - Mar 2020	78.4	1,239	68.9	69	9.6
<i>Change on year</i>	<i>-0.1</i>	<i>-15</i>	<i>-2.0</i>	<i>10</i>	<i>1.9</i>

Female

	White Employment		Minority Ethnic Employment		Ethnicity Employment Rate Gap (%pt)
	Rate	Level (000s)	Rate	Level (000s)	
Apr 2011 - Mar 2012	66.8	1,130	47.9	29	18.9
Apr 2012 - Mar 2013	67.7	1,140	46.5	30	21.2
Apr 2013 - Mar 2014	68.4	1,153	50.5	31	17.9
Apr 2014 - Mar 2015	70.5	1,180	47.1	35	23.4
Apr 2015 - Mar 2016	70.9	1,174	44.2	37	26.8
Apr 2016 - Mar 2017	71.3	1,185	46.8	44	24.5
Apr 2017 - Mar 2018	71.9	1,204	47.2	40	24.7
Apr 2018 - Mar 2019	72.5	1,210	45.1	41	27.3
Apr 2019 - Mar 2020	72.7	1,203	50.4	54	22.3
<i>Change on year</i>	<i>0.2</i>	<i>-8</i>	<i>5.3</i>	<i>13</i>	<i>-5.0</i>

Source: Annual Population Survey, ONS (Apr-Mar datasets)

Table 3.3: Employment patterns, Scotland, Apr-Jun 2020, (Thousands)
not seasonally adjusted

	Apr-Jun 2020	Change on 2008 (000s)			Change on year (000s)	
Total‡	2,663	113	↑	-33	↓	
Employees‡	2,321	75	↑	-31	↓	
Self employed‡	331	46	↑	-4	↓	
Unpaid family workers	6	-3	↓	1	↑	
Government-supported training and employment programmes	5	-5	↓	0	↔	
Full-time workers	1,970	52	↑	-10	↓	
Part-time workers	689	60	↑	-21	↓	
Workers with second jobs	89	-20	↓	-7	↓	
Temporary workers	134	14	↑	24	↑	
All males in employment						
Total‡	1,352	17	↑	-30	↓	
Employees‡	1,142	12	↑	-25	↓	
Self employed‡	205	7	↑	-4	↓	
Unpaid family workers	*	*	■	*	■	
Government-supported training and employment programmes	3	-2	↓	-1	↓	
Full-time workers	1,175	-20	↓	-23	↓	
Part-time workers	174	36	↑	-4	↓	
Workers with second jobs	37	-8	↓	-4	↓	
Temporary workers	55	2	↑	7	↑	
All females in employment						
Total‡	1,311	96	↑	-3	↓	
Employees‡	1,179	63	↑	-6	↓	
Self employed‡	126	39	↑	0	↔	
Unpaid family workers	5	-3	↓	1	↑	
Government-supported training and employment programmes	*	*	■	*	■	
Full-time workers	795	72	↑	14	↑	
Part-time workers	515	24	↑	-17	↓	
Workers with second jobs	52	-12	↓	-3	↓	
Temporary workers	78	12	↑	18	↑	

Source: Labour Force Survey, ONS

‡ Includes people who did not state whether they worked part-time or full-time.

* Estimate suppressed as below reliability threshold.

Quality indicator

Shaded estimates are based on a small sample size. This may result in a less precise estimates, which should be used with caution.

Unshaded estimates are based on a larger sample size. This is likely to result in estimates of higher precision, although they will still be subject to some sampling variability.

[Contents](#)

Table 3.4: Underemployment, Scotland and UK, 2013-2020
not seasonally adjusted

	UK		Scotland	
	Rate	Level (000s)	Rate	Level (000s)
Apr 2012 - Mar 2013	10.0	2,923	10.0	246
Apr 2013 - Mar 2014	9.8	2,893	9.3	231
Apr 2014 - Mar 2015	9.0	2,724	8.5	216
Apr 2015 - Mar 2016	8.5	2,630	9.4	238
Apr 2016 - Mar 2017	8.1	2,524	8.4	216
Apr 2017 - Mar 2018	7.6	2,400	8.1	211
Apr 2018 - Mar 2019	6.8	2,174	7.0	184
Apr 2019 - Mar 2020	7.1	2,284	7.1	186
<i>Change on year (%pt for rate)</i>	<i>0.2</i>	<i>109</i>	<i>0.0</i>	<i>2</i>
<i>Change on Apr 2012 - Mar 2013 (%pt for rate)</i>	<i>-3.0</i>	<i>-639</i>	<i>-3.0</i>	<i>-60</i>

Source: Annual Population Survey, ONS

Notes:

- 1 - Levels and rates based on working population aged 16 and over
- 2 - Underemployment rate based on those in employment (excludes those who did not respond to underemployment questions)
- 3 - Underemployment includes:
 - those looking for more hours in their current role at same rate of pay
 - those looking for an additional job
 - those looking for a replacement job with more hours than their current job.

Table 3.5: Employment rates by highest qualification held and gender, Scotland and UK, Apr 2019 - Mar 2020
not seasonally adjusted

	Scotland			UK		
	Apr 2019 - Mar 2020	Change on year (%pt)		Apr 2019 - Mar 2020	Change on year (%pt)	
All						
Degree level and above	84.4	0.3	↑	86.8	0.7	↑
SVQ 4	80.5	0.3	↑	81.7	0.0	↔
SVQ 3	72.9	-1.6	↓	76.1	0.5	↑
SVQ 2	68.2	0.1	↑	69.5	0.2	↑
SVQ 1	53.9	-2.1	↓	64.2	0.7	↑
Other qualification	72.9	-1.4	↓	75.0	0.8	↑
No qualifications	50.7	1.0	↑	45.6	-0.7	↓
Males						
Degree level and above	86.3	-0.9	↓	89.5	0.3	↑
SVQ 4	83.8	0.2	↑	85.7	-0.4	↓
SVQ 3	78.2	-0.8	↓	79.7	0.3	↑
SVQ 2	72.7	-0.1	↓	73.8	-1.3	↓
SVQ 1	57.7	-1.8	↓	70.4	0.0	↔
Other qualification	79.3	-1.6	↓	84.4	0.7	↑
No qualifications	54.3	1.2	↑	53.7	-1.1	↓
Females						
Degree level and above	82.9	1.3	↑	84.5	1.1	↑
SVQ 4	77.8	0.3	↑	78.2	0.4	↑
SVQ 3	65.9	-2.9	↓	71.8	0.8	↑
SVQ 2	64.4	0.4	↑	65.6	1.4	↑
SVQ 1	50.3	-1.4	↓	57.3	1.8	↑
Other qualification	65.9	-0.6	↓	63.0	0.9	↑
No qualifications	46.7	0.3	↑	36.4	-0.4	↓

Source: Annual Population Survey, ONS

Table 3.6: Levels of unemployment, employment and economic inactivity (All and excluding full-time education), Scotland 2010-2020
not seasonally adjusted

	Totals		Unemployment		Employment		Inactivity	
	All (16-64)	(excl. FT Ed.)	All	(excl. FT Ed.)	All	(excl. FT Ed.)	All	(excl. FT Ed.)
Apr 2009 - Mar 2010	3,399	3,082	193	174	2,423	2,301	782	607
Apr 2010 - Mar 2011	3,418	3,111	207	181	2,427	2,300	784	630
Apr 2011 - Mar 2012	3,431	3,111	217	186	2,416	2,300	798	626
Apr 2012 - Mar 2013	3,419	3,092	210	184	2,414	2,294	795	613
Apr 2013 - Mar 2014	3,415	3,084	197	167	2,436	2,327	782	591
Apr 2014 - Mar 2015	3,417	3,077	168	146	2,490	2,366	759	565
Apr 2015 - Mar 2016	3,427	3,101	153	130	2,497	2,376	777	596
Apr 2016 - Mar 2017	3,437	3,129	120	106	2,523	2,410	794	613
Apr 2017 - Mar 2018	3,441	3,125	113	99	2,555	2,440	772	586
Apr 2018 - Mar 2019	3,442	3,140	112	99	2,564	2,459	765	583
Apr 2019 - Mar 2020	3,442	3,107	88	77	2,564	2,441	789	589
<i>Change on year</i>	0	-33	-24	-22	0	-18	24	6
<i>Change on Apr 2009 - Mar 2010</i>	44	25	-105	-97	142	140	7	-18

Source: Annual Population Survey, ONS (Apr-Mar datasets)

Notes:

1. Levels rounded to nearest thousand
2. Estimates exclude those whose current educational status was unknown
3. Total for All 16-64 year olds includes those whose current educational status was unknown
4. Levels of employment and unemployment are for all aged 16+. Levels of inactivity are for all aged 16-64.

Caution: A correction has been made to inactivity levels (all and excluding full-time education) (September 2020)

Table 3.6 (cont'd): Rates of unemployment, employment and economic inactivity (All and excluding full-time education), Scotland 2010-2020
not seasonally adjusted

	Unemployment Rate		Employment Rate		Inactivity Rate	
	All	(excl. FT Ed.)	All	(excl. FT Ed.)	All	(excl. FT Ed.)
Apr 2009 - Mar 2010	7.4	7.0	71.3	74.7	23.0	19.7
Apr 2010 - Mar 2011	7.9	7.3	71.0	73.9	22.9	20.2
Apr 2011 - Mar 2012	8.2	7.5	70.4	73.9	23.3	20.1
Apr 2012 - Mar 2013	8.0	7.4	70.6	74.2	23.3	19.8
Apr 2013 - Mar 2014	7.5	6.7	71.3	75.4	22.9	19.2
Apr 2014 - Mar 2015	6.3	5.8	72.9	76.9	22.2	18.4
Apr 2015 - Mar 2016	5.8	5.2	72.9	76.6	22.7	19.2
Apr 2016 - Mar 2017	4.6	4.2	73.4	77.0	23.1	19.6
Apr 2017 - Mar 2018	4.3	3.9	74.3	78.1	22.4	18.8
Apr 2018 - Mar 2019	4.2	3.9	74.5	78.3	22.2	18.6
Apr 2019 - Mar 2020	3.3	3.1	74.5	78.6	22.9	19.0
<i>%pt change on year</i>	-0.9	-0.8	0.0	0.3	0.7	0.4
<i>%pt change on Apr 2009 - Mar 2010</i>	-4.1	-4.0	3.2	3.9	-0.1	-0.7

Source: Annual Population Survey, ONS (Apr-Mar datasets)

Notes:

1. The unemployment rate is calculated for those aged 16+. Employment and inactivity rates are for ages 16-64.

Table 4.1: Unemployment by duration, Annual Population Survey, Apr 2019 - Mar 2020
not seasonally adjusted

	Scotland					UK				
	Level (000s)	Change on year	% Change on year	Change on 2008	% Change on 2008	Level (000s)	Change on year	% Change on year	Change on 2008	% Change on 2008
Up to 6 months	66	-12 ↓	-18.6 ↓	-47 ↓	-46.5 ↓	802	-34 ↓	-4.0 ↓	-508 ↓	-38.8 ↓
Over 6 and up to 12 months	17	-6 ↓	-34.6 ↓	-32 ↓	-75.0 ↓	193	6 ↑	3.5 ↑	-307 ↓	-61.4 ↓
Over 1 year up to 2 years	12	-1 ↓	-7.5 ↓	-19 ↓	-62.2 ↓	153	-13 ↓	-8.0 ↓	-243 ↓	-61.3 ↓
2 years or more	20	-6 ↓	-31.0 ↓	-7 ↓	-35.3 ↓	154	-28 ↓	-15.5 ↓	-94 ↓	-37.9 ↓

Source: Annual Population Survey, ONS

Note: Levels based on persons aged 16 and over

Table 4.2: Model-based unemployment levels and rates by local authority
not seasonally adjusted

	Apr 2019-Mar 2020		Change on year			Change on Apr 2009-Mar 2010				
	Rate	Level	Rate (%pt)	Level Change	Rate (%pt)	Level Change	Rate (%pt)	Level Change		
Aberdeen City	2.5	3,300	-2.4	↓	-3,000	↓	-1.8	↓	-2,100	↓
Aberdeenshire	2.2	3,100	-0.4	↓	-600	↓	-0.9	↓	-1,200	↓
Angus	2.8	1,600	-0.9	↓	-500	↓	-3.0	↓	-1,700	↓
Argyll and Bute	2.7	1,100	-0.4	↓	-200	↓	-3.1	↓	-1,400	↓
City of Edinburgh	2.4	6,800	-1.4	↓	-4,200	↓	-4.4	↓	-9,800	↓
Clackmannanshire	3.6	900	-0.7	↓	-200	↓	-4.3	↓	-1,200	↓
Dumfries and Galloway	2.9	2,000	-0.1	↓	-100	↓	-2.7	↓	-2,200	↓
Dundee City	5.0	3,600	-0.8	↓	-400	↓	-4.4	↓	-3,300	↓
East Ayrshire	4.5	2,600	-1.0	↓	-600	↓	-5.0	↓	-3,200	↓
East Dunbartonshire	2.3	1,200	-0.6	↓	-400	↓	-3.9	↓	-2,100	↓
East Lothian	2.5	1,400	-1.1	↓	-600	↓	-3.3	↓	-1,500	↓
East Renfrewshire	2.4	1,100	-1.1	↓	-500	↓	-3.6	↓	-1,500	↓
Falkirk	3.6	2,900	-0.2	↓	-200	↓	-3.7	↓	-2,900	↓
Fife	4.0	7,000	-0.6	↓	-1,500	↓	-4.1	↓	-7,800	↓
Glasgow City	4.5	13,800	-1.0	↓	-3,100	↓	-6.7	↓	-17,300	↓
Highland	2.3	2,800	-0.6	↓	-800	↓	-2.1	↓	-2,700	↓
Inverclyde	4.6	1,600	-0.4	↓	-300	↓	-4.2	↓	-1,900	↓
Midlothian	2.5	1,200	-1.0	↓	-500	↓	-4.0	↓	-1,600	↓
Moray	2.9	1,400	-0.8	↓	-400	↓	-1.7	↓	-900	↓
Na h-Eileanan Siar	2.1	300	-0.4	↓	0	↔	-3.8	↓	-500	↓
North Ayrshire	4.9	3,000	-0.9	↓	-700	↓	-5.9	↓	-4,000	↓
North Lanarkshire	3.9	6,700	-0.5	↓	-1,100	↓	-5.4	↓	-9,300	↓
Orkney Islands	1.6	200	-0.4	↓	-100	↓	-0.9	↓	-100	↓
Perth and Kinross	2.4	1,900	-0.5	↓	-400	↓	-2.1	↓	-1,300	↓
Renfrewshire	3.6	3,300	-1.2	↓	-1,000	↓	-4.6	↓	-3,800	↓
Scottish Borders	2.9	1,600	-0.3	↓	-200	↓	-2.5	↓	-1,400	↓
Shetland Islands	1.9	200	-0.2	↓	-100	↓	-1.1	↓	-200	↓
South Ayrshire	3.5	1,800	-1.0	↓	-400	↓	-4.6	↓	-2,500	↓
South Lanarkshire	3.0	5,000	-1.0	↓	-1,600	↓	-4.7	↓	-7,300	↓
Stirling	3.1	1,400	-0.6	↓	-300	↓	-4.2	↓	-1,800	↓
West Dunbartonshire	4.2	1,800	-0.6	↓	-400	↓	-5.7	↓	-2,700	↓
West Lothian	2.9	2,800	-1.0	↓	-900	↓	-4.5	↓	-3,900	↓
Scotland	3.3	89,300	-0.8	↓	-25,000	↓	-4.0	↓	-105,300	↓

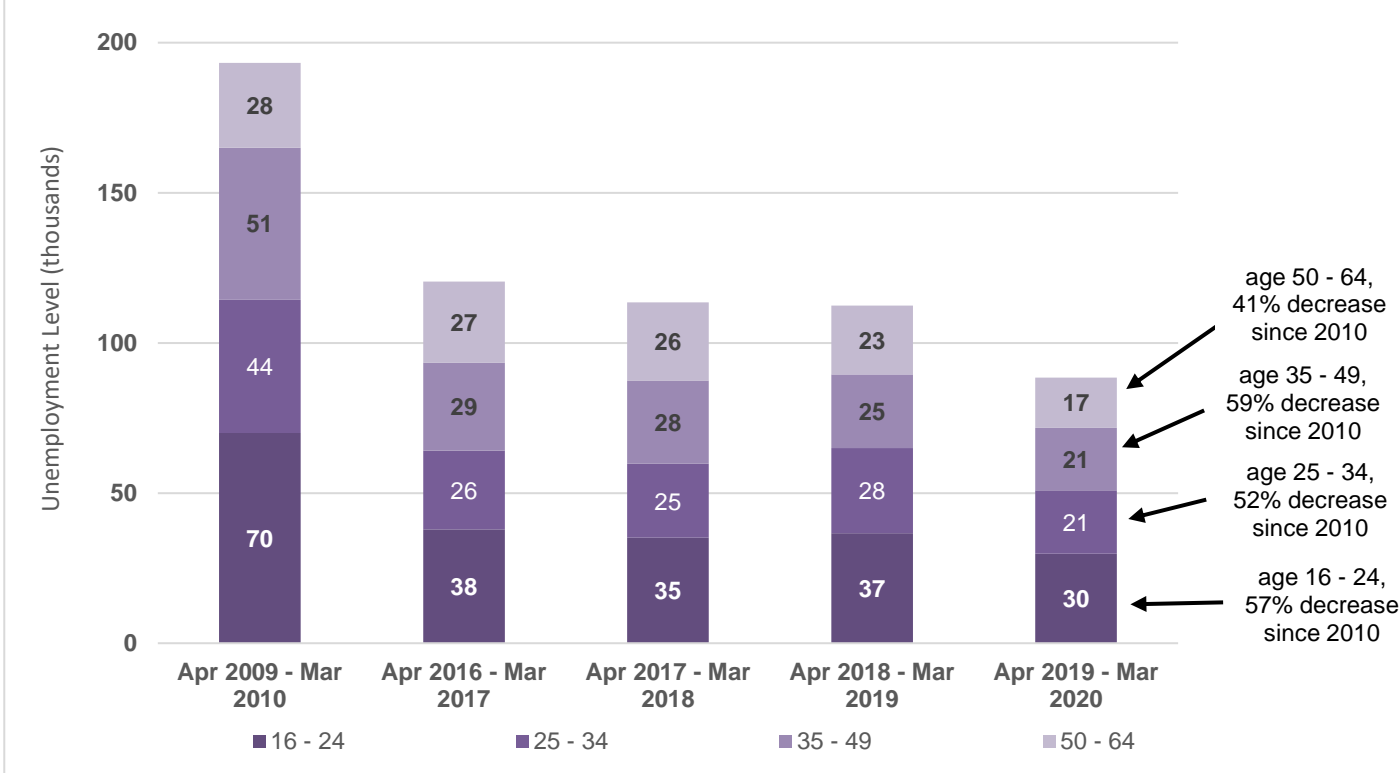
Sources: Annual Population Survey (ONS), Claimant Count (ONS)

Notes:

* Estimate and confidence interval unreliable since the group sample size is small (3-9).

1. Levels rounded to the nearest hundred.
2. Proportions are calculated on unrounded figures.
3. Totals may not equal the sum of individual parts due to rounding.

Chart 4.1: ILO unemployment levels by age-group (16-64), Scotland
not seasonally adjusted



Source: Annual Population Survey, ONS (Apr-Mar datasets)

Chart 5.1: Unemployment, Alternative Claimant Count and Claimant Count levels, Scotland, January 2013 - July 2020
seasonally adjusted

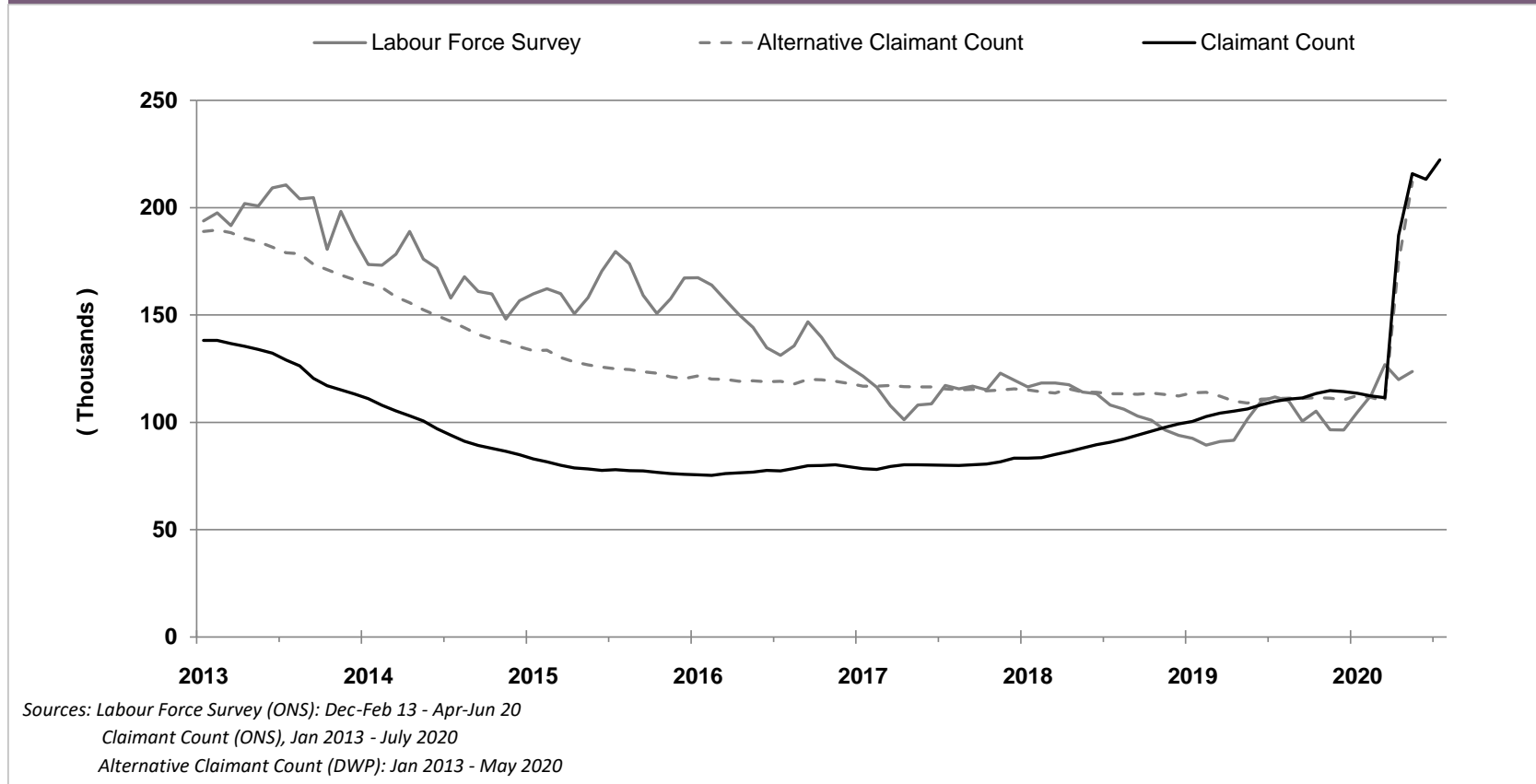


Table 5.1a: Claimant Count levels, July 2020 - (Experimental Data)

	Level	Change on previous month		Change on previous year		Change on July 2013	
	(000s)	(000s)		(000s)		(000s)	
Scotland	222	9	↑	112	↑	93	↑
England	2,283	80	↑	1,323	↑	1,119	↑
Wales	121	5	↑	65	↑	48	↑
N Ireland	63	1	↑	33	↑	0	↔
UK	2,689	94	↑	1,533	↑	1,260	↑

Table 5.1b: Claimant Count rates, July 2020 - (Experimental Data)

	Rate	Change on previous month		Change on previous year		Change on July 2013	
	(%)	(%pts)		(%pts)		(%pts)	
Scotland	7.9	0.3	↑	4.0	↑	3.3	↑
England	7.4	0.3	↑	4.3	↑	3.4	↑
Wales	8.0	0.3	↑	4.3	↑	2.9	↑
N Ireland	6.8	0.1	↑	3.6	↑	-0.2	↓
UK	7.5	0.3	↑	4.3	↑	3.2	↑

Source: Claimant Count, ONS (seasonally adjusted)

Notes:

1. Levels rounded to nearest 1000.
2. The Claimant Count rate is calculated as a proportion of Claimant Count + Workforce jobs.
3. Claimant count rates are workplace based.

ONS re-classified the Claimant Count series as experimental following the introduction of DWP Universal Credit and concerns that this series may be misleading. See Notes (page 43) for further information.

Table 5.2: Claimant Count by local authority (Experimental data)
not seasonally adjusted

	July 2020 Total Claimants	% Change on year		Claimant Count rate (%)	Change on year (%pts)	
Aberdeen City	8,860	143	↑	5.6	3.3	↑
Aberdeenshire	6,500	137	↑	4.0	2.3	↑
Angus	4,010	77	↑	5.8	2.5	↑
Argyll and Bute	3,275	136	↑	6.4	3.7	↑
City of Edinburgh	18,515	195	↑	5.1	3.4	↑
Clackmannanshire	2,225	62	↑	6.9	2.6	↑
Dumfries and Galloway	5,090	94	↑	5.8	2.8	↑
Dundee City	7,465	55	↑	7.6	2.7	↑
East Ayrshire	6,225	62	↑	8.2	3.1	↑
East Dunbartonshire	2,905	136	↑	4.5	2.6	↑
East Lothian	3,675	114	↑	5.6	3.0	↑
East Renfrewshire	2,440	154	↑	4.3	2.6	↑
Falkirk	6,415	96	↑	6.3	3.1	↑
Fife	15,880	81	↑	6.8	3.1	↑
Glasgow City	37,930	103	↑	8.6	4.4	↑
Highland	8,555	150	↑	5.9	3.6	↑
Inverclyde	3,305	37	↑	6.7	1.8	↑
Midlothian	3,110	125	↑	5.5	3.0	↑
Moray	3,030	103	↑	5.1	2.6	↑
Na h-Eileanan Siar	875	167	↑	5.6	3.5	↑
North Ayrshire	7,350	57	↑	8.9	3.2	↑
North Lanarkshire	15,865	84	↑	7.2	3.3	↑
Orkney Islands	410	140	↑	3.1	1.8	↑
Perth and Kinross	4,605	157	↑	5.0	3.1	↑
Renfrewshire	7,855	98	↑	6.9	3.4	↑
Scottish Borders	3,885	118	↑	5.7	3.1	↑
Shetland Islands	525	169	↑	3.7	2.3	↑
South Ayrshire	4,895	85	↑	7.3	3.4	↑
South Lanarkshire	13,470	89	↑	6.7	3.1	↑
Stirling	3,165	109	↑	5.2	2.7	↑
West Dunbartonshire	4,905	81	↑	8.6	3.9	↑
West Lothian	6,855	108	↑	5.9	3.1	↑
Scotland	224,070	102	↑	6.4	3.2	↑

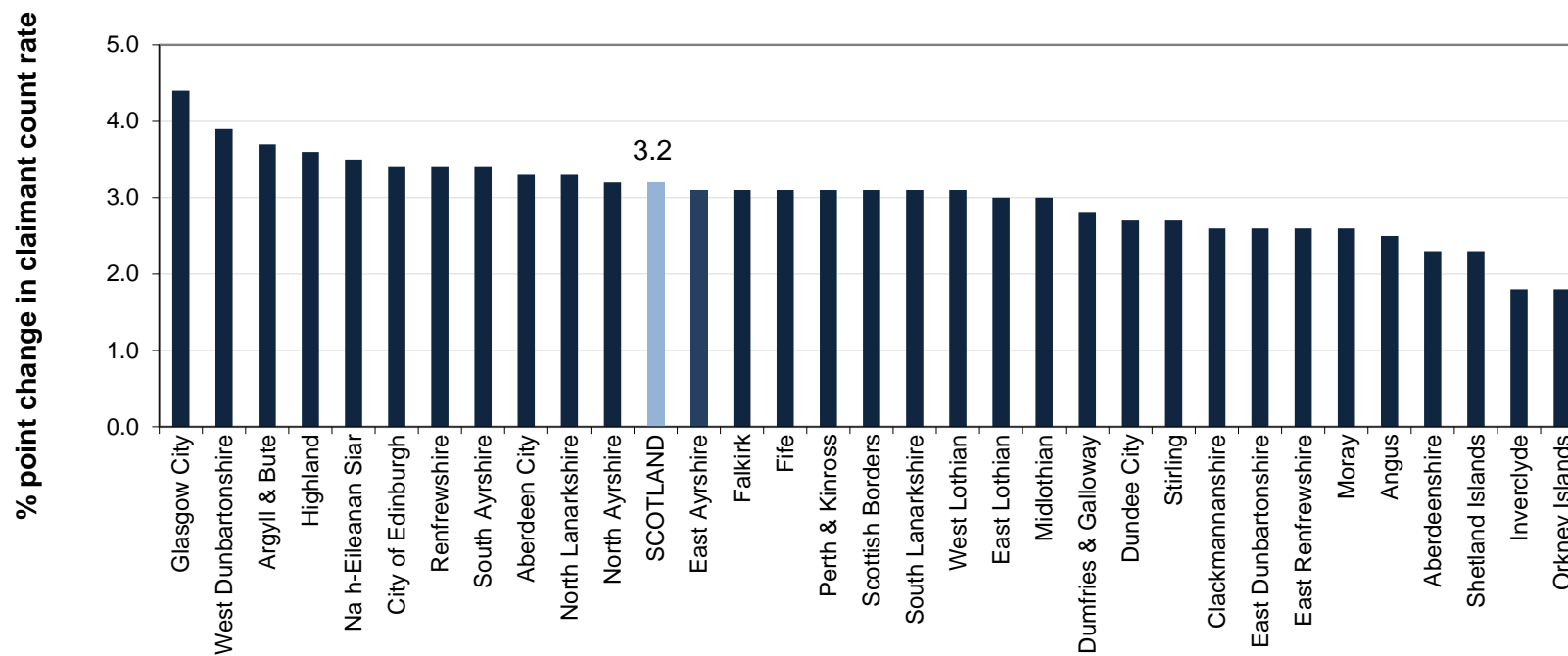
Source: Claimant Count, ONS

Notes:

1. Levels rounded to nearest 5.
2. The Claimant Count rate is calculated as a proportion of the resident population, aged 16-64, based on the Mid-year population estimates for 2018.

ONS re-classified the Claimant Count series as experimental following the introduction of DWP Universal Credit and concerns that this series may be misleading. **See Notes (page 43) for further information.**

Chart 5.2: Change in Claimant Count rate by local authority (July 2019 to July 2020)



Source: Claimant Count, ONS

Notes:

1. Claimant Count rates are based on unrounded data. Chart labels are rounded to one decimal place.
2. Claimant Count rates in each local authority and for Scotland are calculated as a proportion of the resident population, aged 16-64, based on the Mid-year population estimates for 2018.

Table 5.3: 16-24 Claimant Count levels and rates, Scotland and UK
(Experimental data)
not seasonally adjusted

	Scotland		UK	
	Level	Rate (%)	Level	Rate (%)
July 2019	22,745	3.9	217,785	3.0
July 2020	46,850	8.1	537,745	7.5
Change on year (rate as %pt)	24,105	4.1	319,960	4.5

Source: Claimant Count, ONS

Table 5.4: 16-24 Claimant Count levels and rates by gender, Scotland
(Experimental data)
not seasonally adjusted

	Male		Female	
	Level	Rate (%)	Level	Rate (%)
July 2019	14,150	4.8	8,595	3.0
July 2020	28,390	9.6	18,460	6.5
Change on year (rate as %pt)	14,240	4.8	9,865	3.4

Source: Claimant Count, ONS

Notes:

1. Levels rounded to nearest 5.
2. These Claimant Count rates for 16-24 year olds have been produced by the Scottish Government and are calculated as a proportion of the resident population, aged 16-24, based on the Mid-year population estimates for 2018.

ONS re-classified the Claimant Count series as experimental following the introduction of DWP Universal Credit and concerns that this series may be misleading. **See Notes (page 43) for further information.**

Table 5.5: 16-24 Claimant Count levels and rates by Local Authority, July 2020 (Experimental data)

	Level			Rate		
	July 2020	Change on year		July 2020	Change on year (%pts)	
Scotland	46,850	24,105	↑	8.1	4.1	↑
<i>Local Authority Area</i>						
Aberdeen City	1,725	1,015	↑	6.3	3.7	↑
Aberdeenshire	1,330	675	↑	5.6	2.9	↑
Angus	935	355	↑	8.5	3.3	↑
Argyll and Bute	650	410	↑	7.8	4.9	↑
City of Edinburgh	3,305	2,265	↑	5.1	3.5	↑
Clackmannanshire	550	205	↑	10.6	4.0	↑
Dumfries and Galloway	1,100	570	↑	8.2	4.3	↑
Dundee City	1,775	660	↑	8.6	3.2	↑
East Ayrshire	1,370	550	↑	11.4	4.6	↑
East Dunbartonshire	640	395	↑	6.0	3.7	↑
East Lothian	810	505	↑	8.0	5.0	↑
East Renfrewshire	570	365	↑	5.9	3.7	↑
Falkirk	1,360	640	↑	8.7	4.1	↑
Fife	3,580	1,665	↑	8.9	4.1	↑
Glasgow City	7,085	3,735	↑	8.9	4.7	↑
Highland	1,750	1,115	↑	8.1	5.1	↑
Inverclyde	740	210	↑	9.5	2.8	↑
Midlothian	705	380	↑	8.1	4.4	↑
Moray	720	380	↑	7.7	4.0	↑
Na h-Eileanan Siar	160	110	↑	7.4	5.1	↑
North Ayrshire	1,630	620	↑	11.7	4.4	↑
North Lanarkshire	3,500	1,720	↑	9.7	4.7	↑
Orkney Islands	90	50	↑	4.7	2.4	↑
Perth and Kinross	1,040	635	↑	7.4	4.5	↑
Renfrewshire	1,595	795	↑	8.8	4.4	↑
Scottish Borders	885	460	↑	8.6	4.4	↑
Shetland Islands	105	70	↑	4.8	3.2	↑
South Ayrshire	1,050	455	↑	10.0	4.3	↑
South Lanarkshire	2,810	1,420	↑	8.9	4.5	↑
Stirling	720	390	↑	5.7	3.1	↑
West Dunbartonshire	1,010	485	↑	11.3	5.4	↑
West Lothian	1,560	800	↑	8.4	4.3	↑

Source: Claimant Count, ONS

Notes:

1. Levels rounded to nearest 5.
2. These Claimant Count rates for 16-24 year olds have been produced by the Scottish Government and are calculated as a proportion of the resident population, aged 16-24, based on the Mid-year population estimates for 2018.

Table 6.1a: Alternative Claimant Count levels, May 2020 - (Experimental Data)

	Level	Change on previous month		Change on previous year		Change on May 2013	
	(000s)	(000s)		(000s)		(000s)	
Scotland	212	37	↑	103	↑	28	↑
England	2,286	576	↑	1,248	↑	490	↑
Wales	120	18	↑	60	↑	11	↑
N Ireland	66	9	↑	31	↑	-17	↓
UK	2,686	640	↑	1,443	↑	512	↑

Table 6.1b: Alternative Claimant Count rates, May 2020 - (Experimental Data)

	Rate	Change on previous month		Change on previous year		Change on May 2013	
	(%)	(%pts)		(%pts)		(%pts)	
Scotland	6.1	1.1	↑	2.9	↑	0.8	↑
England	6.5	1.6	↑	3.6	↑	1.3	↑
Wales	6.3	0.9	↑	3.1	↑	0.6	↑
N Ireland	5.6	0.7	↑	2.7	↑	-1.5	↓
UK	6.5	1.5	↑	3.5	↑	1.1	↑

Source: *Alternative Claimant Count, DWP, seasonally adjusted*

Notes:

1. Levels rounded to nearest 1000.
2. The Alternative Claimant Count is the total number of people claiming unemployment-related benefits. This comprises those claiming either Jobseeker's Allowance or Universal Credit (under the Searching for Work conditionality) along with estimates of additional claimants who would have been searching for work under Universal Credit had it existed over the entire period since 2013.
3. The Alternative Claimant Count rate is calculated as a proportion of the resident population, aged 16-64, based on the Mid-year population estimates for 2018.
4. The Alternative Claimant Count publication is available online at (based on 'Table 2_region') <https://www.gov.uk/government/statistics/alternative-claimant-count-statistics-january-2013-to-may-2020>

Table 6.2: Alternative Claimant Count by local authority (Experimental data)
not seasonally adjusted

	May 2020 Total Claimants	% Change on year		Alternative Claimant Count rate (%)	Change on year (%pts)	
Aberdeen City	8,025	95.5	↑	5.1	2.5	↑
Aberdeenshire	6,146	106.4	↑	3.8	1.9	↑
Angus	3,854	73.8	↑	5.5	2.4	↑
Argyll and Bute	3,334	126.6	↑	6.5	3.6	↑
City of Edinburgh	18,561	154.3	↑	5.1	3.1	↑
Clackmannanshire	2,293	69.7	↑	7.1	2.9	↑
Dumfries and Galloway	5,229	88.8	↑	6.0	2.8	↑
Dundee City	7,247	64.5	↑	7.3	2.9	↑
East Ayrshire	6,045	64.9	↑	7.9	3.1	↑
East Dunbartonshire	2,802	130.8	↑	4.3	2.4	↑
East Lothian	3,748	130.1	↑	5.7	3.2	↑
East Renfrewshire	2,378	138.5	↑	4.2	2.4	↑
Falkirk	6,373	96.0	↑	6.2	3.1	↑
Fife	15,628	75.2	↑	6.7	2.9	↑
Glasgow City	37,169	89.5	↑	8.4	4.0	↑
Highland	8,205	144.3	↑	5.7	3.4	↑
Inverclyde	3,190	44.7	↑	6.5	2.0	↑
Midlothian	3,209	129.7	↑	5.7	3.2	↑
Moray	3,009	82.0	↑	5.1	2.3	↑
Na h-Eileanan Siar	876	140.0	↑	5.6	3.3	↑
North Ayrshire	7,139	59.0	↑	8.7	3.2	↑
North Lanarkshire	15,322	84.9	↑	7.0	3.2	↑
Orkney Islands	403	114.4	↑	3.0	1.6	↑
Perth and Kinross	4,467	143.6	↑	4.9	2.9	↑
Renfrewshire	7,652	92.9	↑	6.7	3.2	↑
Scottish Borders	3,889	107.3	↑	5.7	3.0	↑
Shetland Islands	461	115.4	↑	3.2	1.7	↑
South Ayrshire	4,716	77.0	↑	7.1	3.1	↑
South Lanarkshire	13,194	101.6	↑	6.5	3.3	↑
Stirling	3,111	110.9	↑	5.1	2.7	↑
West Dunbartonshire	4,856	79.0	↑	8.5	3.8	↑
West Lothian	6,803	96.2	↑	5.8	2.9	↑
Scotland	211,943	94.5	↑	6.1	2.9	↑

Source: *Alternative Claimant Count, DWP*

Notes:

1. The Alternative Claimant Count is the total number of people claiming unemployment-related benefits. This comprises those claiming either Jobseeker's Allowance or Universal Credit (under the Searching for Work conditionality) along with estimates of additional claimants who would have been searching for work under Universal Credit had it existed over the entire period since 2013.
2. The Alternative Claimant Count rates are calculated as a proportion of the resident population, aged 16-64, based on the Mid-year population estimates for 2018.

Table 6.3: 16-24 Alternative Claimant Count levels and rates, Scotland and UK (Experimental data)

	Scotland		UK	
	Level	Rate (%)	Level	Rate (%)
May 2019	19,902	3.4	203,144	2.8
May 2020	39,926	6.9	495,829	6.9
Change on year (rate as %pt)	20,024	3.4	292,685	4.1

Source: Alternative Claimant Count, DWP

Table 6.4: 16-24 Alternative Claimant Count levels and rates by gender, Scotland (Experimental data)

	Male		Female	
	Level	Rate (%)	Level	Rate (%)
May 2019	12,484	4.2	7,415	2.6
May 2020	24,873	8.4	15,051	5.3
Change on year (rate as %pt)	12,389	4.2	7,636	2.7

Source: Alternative Claimant Count, DWP

Notes:

1. The Alternative Claimant Count is the total number of people claiming unemployment-related benefits. This comprises those claiming either Jobseeker's Allowance or Universal Credit (under the Searching for Work conditionality) along with estimates of additional claimants who would have been searching for work under Universal Credit had it existed over the entire period since 2013.
2. The Alternative Claimant Count rate is calculated as a proportion of the resident population, aged 16-64, based on the Mid-year population estimates for 2018.

Table 6.5: 16-24 Alternative Claimant Count levels and rates by Local Authority (Experimental data)

	Level			Rate		
	May 2020	Change on year		May 2020	Change on year (%pts)	
Scotland	39,926	20,024	↑	6.9	3.4	↑
<i>Local Authority Area</i>						
Aberdeen City	1,472	809	↑	5.4	3.0	↑
Aberdeenshire	1,133	582	↑	4.8	2.5	↑
Angus	749	272	↑	6.8	2.5	↑
Argyll and Bute	546	331	↑	6.5	4.0	↑
City of Edinburgh	2,805	1,855	↑	4.3	2.9	↑
Clackmannanshire	492	175	↑	9.5	3.4	↑
Dumfries and Galloway	962	471	↑	7.2	3.5	↑
Dundee City	1,525	650	↑	7.4	3.1	↑
East Ayrshire	1,124	421	↑	9.3	3.5	↑
East Dunbartonshire	523	302	↑	4.9	2.9	↑
East Lothian	697	417	↑	6.9	4.1	↑
East Renfrewshire	443	277	↑	4.6	2.9	↑
Falkirk	1,212	561	↑	7.7	3.6	↑
Fife	2,993	1,264	↑	7.4	3.1	↑
Glasgow City	6,121	3,226	↑	7.7	4.0	↑
Highland	1,441	876	↑	6.6	4.0	↑
Inverclyde	601	156	↑	7.7	2.0	↑
Midlothian	629	344	↑	7.2	3.9	↑
Moray	602	234	↑	6.4	2.5	↑
Na h-Eileanan Siar	132	78	↑	6.1	3.6	↑
North Ayrshire	1,343	493	↑	9.7	3.6	↑
North Lanarkshire	2,970	1,434	↑	8.2	4.0	↑
Orkney Islands	68	38	↑	3.6	2.0	↑
Perth and Kinross	868	531	↑	6.1	3.8	↑
Renfrewshire	1,371	720	↑	7.5	4.0	↑
Scottish Borders	739	381	↑	7.2	3.7	↑
Shetland Islands	88	45	↑	4.0	2.1	↑
South Ayrshire	877	372	↑	8.3	3.5	↑
South Lanarkshire	2,517	1,276	↑	8.0	4.1	↑
Stirling	595	305	↑	4.7	2.4	↑
West Dunbartonshire	904	460	↑	10.1	5.1	↑
West Lothian	1,361	660	↑	7.3	3.6	↑

Source: *Alternative Claimant Count, DWP*

Notes:

1. The Alternative Claimant Count is the total number of people claiming unemployment-related benefits. This comprises those claiming either Jobseeker's Allowance or Universal Credit (under the Searching for Work conditionality) along with estimates of additional claimants who would have been searching for work under Universal Credit had it existed over the entire period since 2013.
2. The Alternative Claimant Count rates are calculated as a proportion of the resident population, aged 16-64, based on the Mid-year population estimates for 2018.

Table 7.1: Median monthly pay, Scotland and UK, June 2015 - June 2020 (Experimental statistics)

	2015	2016	2017	2018	2019	2020
Median monthly pay (£ per month)						
UK	1,616	1,653	1,693	1,753	1,810	1,830
<i>Median £ per month, 3 month moving average</i>						
UK	1,614	1,651	1,689	1,742	1,808	1,804
Scotland	1,653	1,685	1,715	1,755	1,835	1,838
Annual Growth (%)						
UK		2.3	2.4	3.5	3.3	1.1
<i>Annual Growth (%) - Median £ per month, 3 month moving average</i>						
UK		2.3	2.3	3.1	3.8	-0.2
Scotland		1.9	1.8	2.3	4.6	0.2

Source: PAYE real-time information (HMRC)

Note: Sub-national estimates (for Scotland and other NUTS1 geographies) are published as a 3-month seasonally adjusted moving average while headline UK estimates are available for each single month (but not seasonally adjusted). For comparison purposes, both UK figures are shown - headline estimates are in grey.

Chart 7.1: Median monthly pay, Scotland and UK, June 2015 - June 2020 (Experimental statistics)
seasonally adjusted

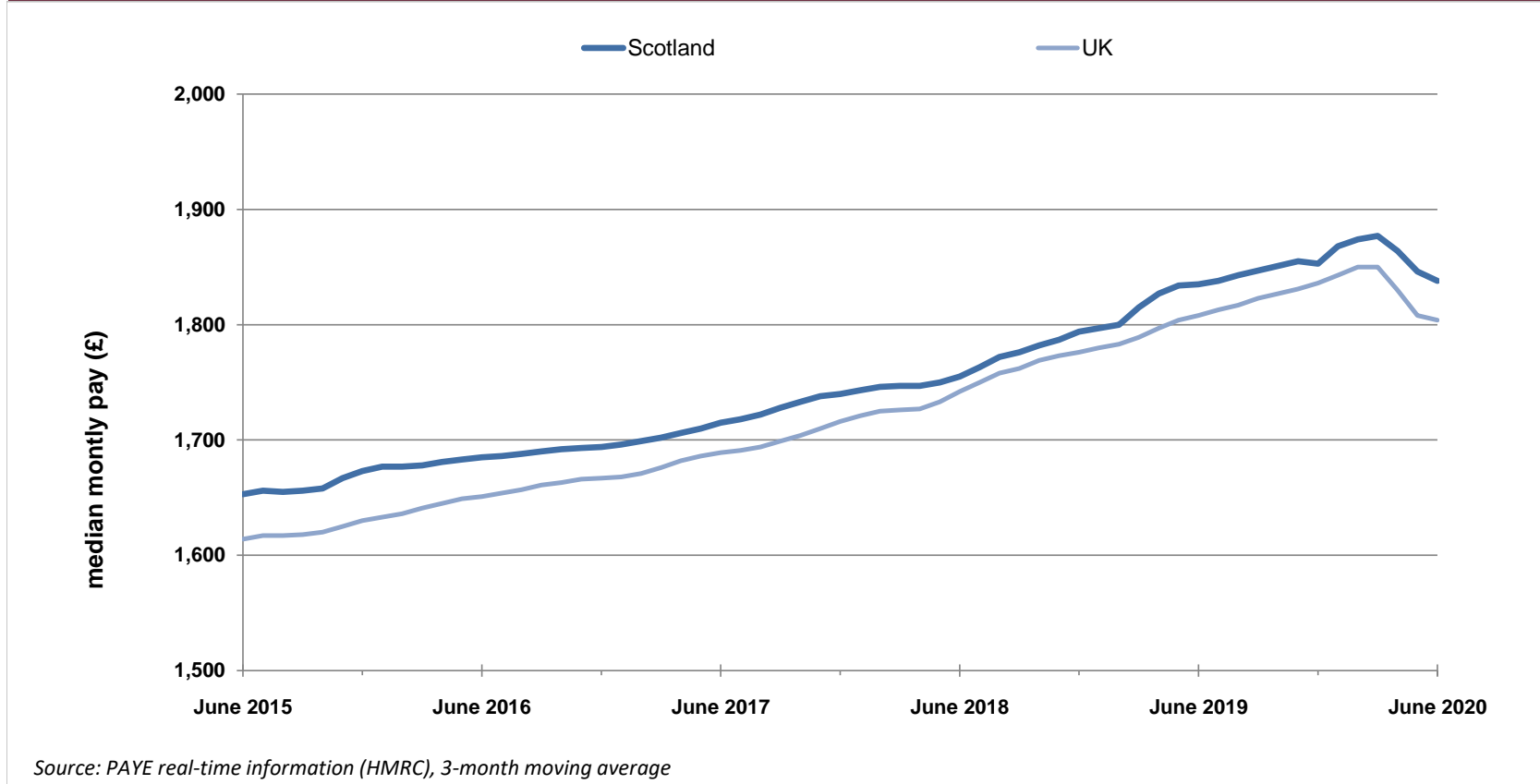
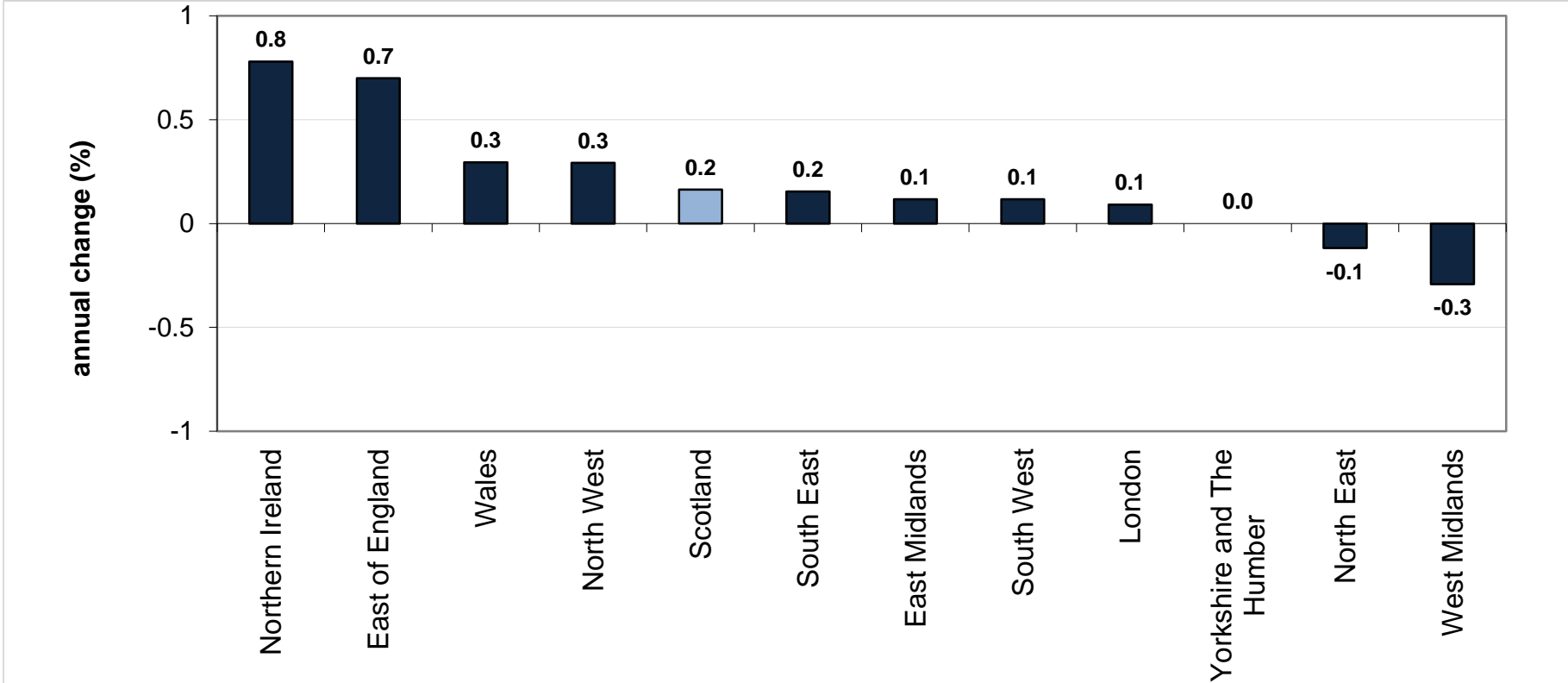


Chart 7.2: Annual change in median monthly pay, June 2019 to June 2020, by Government Office Region (Experimental statistics)
seasonally adjusted



Source: PAYE real-time information (HMRC), 3-month moving average. Estimates are residence-based.

Alternative Claimant Count

The Alternative Claimant Count measures the number of people claiming unemployment-related benefits. Previously, the Claimant Count was simply the number of people claiming Jobseeker's Allowance.

- Since the introduction of Universal Credit in April 2013, Universal Credit claimants who meet the 'Searching for Work' conditionality have been added to overall Claimant Count figures. By bringing more people within the coverage of the Claimant Count, total numbers may rise irrespective of economic performance.
- ONS has withdrawn Claimant Count data from Labour Market Statistics bulletins, stating that it was no longer a reliable economic indicator and could be a misleading representation of changes in the labour market. The Alternative Claimant Count is intended to provide a consistent claimant unemployment series and thus a better indicator of local labour market change over time.
- The new Alternative Claimant Count is not directly comparable to the Claimant Count figures previously published.

Statistics for this new measure are published quarterly by the Department for Work and Pensions (DWP). They are available by calendar month at national and local authority level and can be broken down by gender, age group and type of benefit claimed. Tables 6.1 to 6.5 show experimental Alternative Claimant Count data published by DWP and are updated quarterly. The most recent data was published on 16 July 2020. Further information on this measure can be found at the following link:

<https://www.gov.uk/government/statistics/alternative-claimant-count-statistics-january-2013-to-may-2020>

Claimant Count

The Claimant Count measures the number of people claiming benefit principally for the reason of being unemployed:

- between January 1971 (when comparable estimates start) and September 1996, it is an estimate of the number of people who would have claimed unemployment-related benefits if Jobseeker's Allowance had existed at that time.
- between October 1996 and April 2013, the Claimant Count is a count of the number of people claiming Jobseeker's Allowance (JSA).
- between May 2013 and October 2013, the Claimant Count includes all claimants of Universal Credit (including those who were in work) as well as all JSA claimants
- from November 2013, the Claimant Count includes all out of work Universal Credit claimants as well as all JSA claimants .
- From April 2015 onwards the claimant count includes those claimants of Universal Credit who are required to search for work, i.e. within the Searching for Work conditionality regime as defined by the Department for Work & Pensions as well as all JSA claimants

Information for July 2020 is for the number of claimants as at the 9th July 2020.

Measures of disability

In the April-June 2013 dataset, and subsequent datasets, questions used to derive current disability status of a person were changed. Estimates are now based on the core definition of disability under the Equality Act 2010, as specified in the Government Statistical Service (GSS) Harmonised Standards for Questions on disability.

- The definition includes people with a health condition or illness lasting 12 months or more that reduces their ability to carry out day-to-day activities.
- The definition excludes certain non-core groups covered by the Equality Act, such as those with progressive or past conditions that do not currently limit their activities, and conditions that only limit their activities without medication or treatment.
- Respondents are now asked to take into account any medication that they are currently taking when previously they were asked to consider their day-to-day activities without the use of medication.

The introduction of this new definition has created a discontinuity in the series and estimates are not directly comparable with earlier periods

[Contents](#)

Further information

Further Labour Market information can be obtained from the following sites/sources.

Scottish Government Labour Market Statistics:

Further commentary and charts are published in *Labour Market Trends: August 2020*

<https://www.gov.scot/publications/labour-market-trends-august-2020/>

Scottish Government Open Data:

<https://statistics.gov.scot/home>

ONS:

Labour Market Statistics Theme page

<http://www.ons.gov.uk/ons/taxonomy/index.html?nscl=Labour+Market>

Regional Labour Market Statistics

<https://www.ons.gov.uk/employmentandlabourmarket/peopleinwork/employmentandemployeetypes/bulletins/regionallabourmarket/previousReleases>

HMRC:

Earnings and employment statistics from Pay As You Earn (PAYE) Real Time Information

<https://www.gov.uk/government/statistics/uk-real-time-information-experimental-statistics>

NOMIS:

Online database for official labour market statistics

<https://www.nomisweb.co.uk/default.asp>

Contact details

Telephone: 0131 244 6773

email: LMStats@gov.scot