

## How to Respond

### **Responding to this consultation**

You are invited to respond to this consultation by 13 November 2013 using the form in Appendices D & E.

**Please send your response with the completed Respondent Information Form (see 'Handling your Response' below) to:**

Responses can be sent by email, by post or by online electronic response form:

Email: [Marine Environment Mailbox@scotland.gsi.gov.uk](mailto:Marine_Environment_Mailbox@scotland.gsi.gov.uk)

Post: MPA Network Consultation  
Scottish Government  
Marine Planning and Policy Division  
Area 1-A South  
Victoria Quay  
Edinburgh  
EH66QQ

On line: [www.scotland.gov.uk/consultations](http://www.scotland.gov.uk/consultations)

If you have any enquiries please send them to [Marine Environment Mailbox@scotland.gsi.gov.uk](mailto:Marine_Environment_Mailbox@scotland.gsi.gov.uk) or call Sebastian Howell on 0131 244 5301, Michael McLeod on 0131 244 5562 or Paul Cook on 0131 244 0381.

We would be grateful if you would use the consultation questionnaire provided in your response as this will aid our analysis of the responses received. This consultation, and all other Scottish Government consultation exercises, can be viewed online on the consultation web pages of the Scottish Government website at <http://www.scotland.gov.uk/consultations>.

The Scottish Government has an email alert system for consultations, <http://register.scotland.gov.uk>. This system allows stakeholder individuals and organisations to register and receive a weekly email containing details of all new consultations (including web links). It complements, but in no way replaces SG distribution lists, and is designed to allow stakeholders to keep up to date with all SG consultation activity, and therefore be alerted at the earliest opportunity to those of most interest. We would encourage you to register.

### **Handling your response**

We need to know how you wish your response to be handled and, in particular, whether you are happy for your response to be made public. Please complete and return the **Respondent Information Form** which forms part of the consultation questionnaire as this will ensure that we treat your response appropriately. If you ask

for your response not to be published we will regard it as confidential, and we will treat it accordingly.

All respondents should be aware that the Scottish Government are subject to the provisions of the Freedom of Information (Scotland) Act 2002 and would therefore have to consider any request made to it under the Act for information relating to responses made to this consultation exercise.

### **Next steps in the process**

Where respondents have given permission for their response to be made public and after we have checked that they contain no potentially defamatory material, responses will be made available to the public in the Scottish Government Library and on the SEConsult web pages. You can make arrangements to view responses by contacting the SG Library on 0131 244 4552. Responses can be copied and sent to you, but a charge may be made for this service.

### **What happens next?**

Following the closing date, all responses will be analysed and considered to help us make a decision on the shape of the MPA network. We aim to issue a report on this consultation process in early 2014.

### **Comments and complaints**

If you have any comments about how this consultation exercise has been conducted, please send them to Sebastian Howell. (0131 244 5301 or [Sebastian.howell@scotland.gsi.gov.uk](mailto:Sebastian.howell@scotland.gsi.gov.uk)).

### **The Scottish Government Consultation Process**

Consultation is an essential and important aspect of Scottish Government working methods. Given the wide-ranging areas of work of the Scottish Government, there are many varied types of consultation. However, in general, Scottish Government consultation exercises aim to provide opportunities for all those who wish to express their opinions on a proposed area of work to do so in ways which will inform and enhance that work.

The Scottish Government encourages consultation that is thorough, effective and appropriate to the issue under consideration and the nature of the target audience. Consultation exercises take account of a wide range of factors, and no two exercises are likely to be the same.

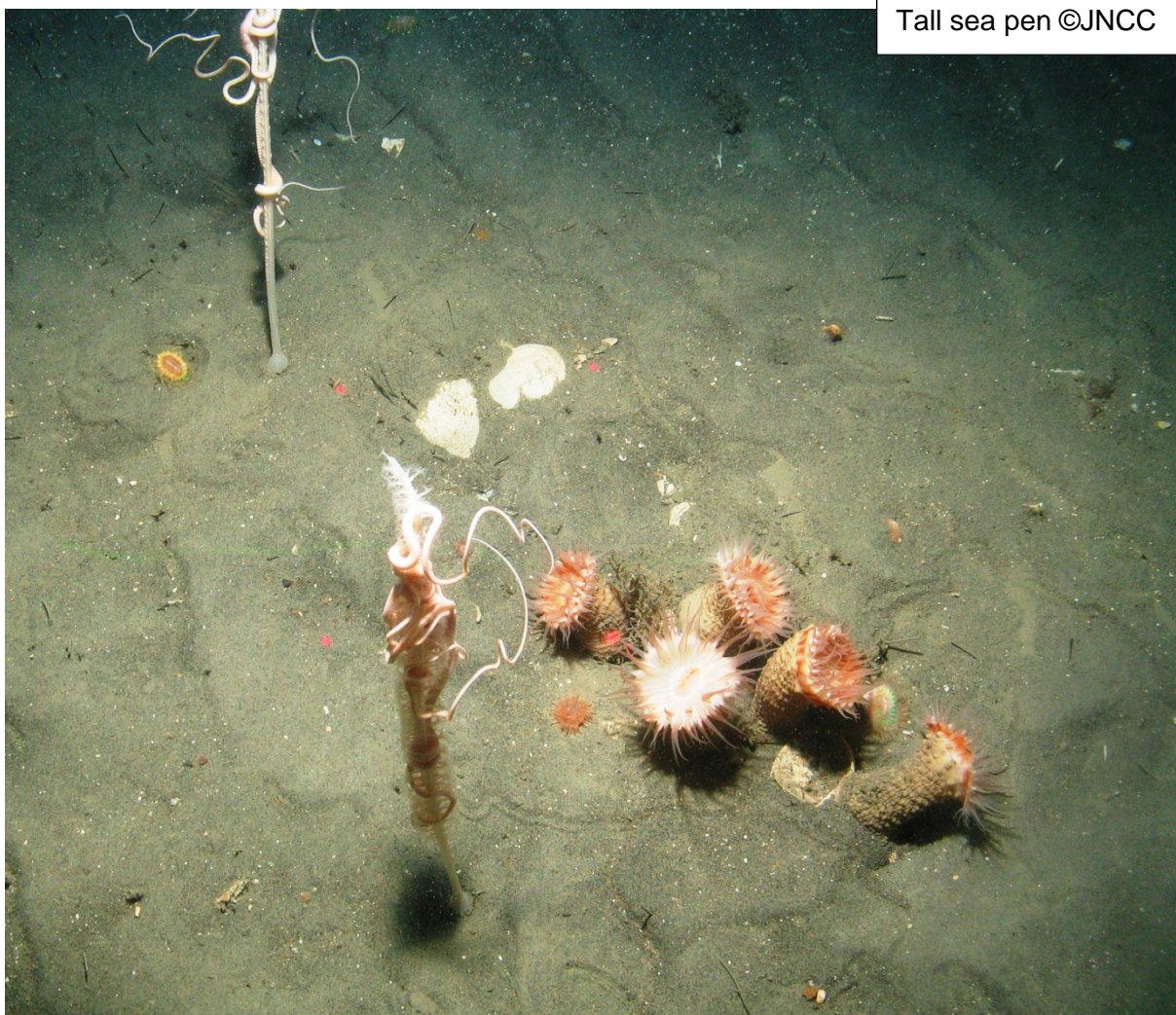
Typically Scottish Government consultations involve a written paper inviting answers to specific questions or more general views about the material presented. Written papers are distributed to organisations and individuals with an interest in the issue, and they are also placed on the Scottish Government web site enabling a wider audience to access the paper and submit their responses.

Consultation exercises may also involve seeking views in a number of different ways, such as through public meetings, focus groups or questionnaire exercises.

Copies of all the written responses received to a consultation exercise (except those where the individual or organisation requested confidentiality) are placed in the Scottish Government library at Saughton House, Edinburgh (K Spur, Saughton House, Broomhouse Drive, Edinburgh, EH113XD, telephone 0131 244 4565).

All Scottish Government consultation papers and related publications (e.g. analysis of response reports) can be accessed at: Scottish Government consultations (<http://www.scotland.gov.uk/consultations>) The views and suggestions detailed in consultation responses are analysed and used as part of the decision making process, along with a range of other available information and evidence. Depending on the nature of the consultation exercise the responses received may: indicate the need for policy development or review; inform the development of a particular policy; help decisions to be made between alternative policy proposals; be used to finalise legislation before it is implemented. Final decisions on the issues under consideration will also take account of a range of other factors, including other available information and research evidence.

**While details of particular circumstances described in a response to a consultation exercise may usefully inform the policy process, consultation exercises cannot address individual concerns and comments, which should be directed to the relevant public body.**



## **CONSULTATION QUESTIONS**

**1. Do you support the development of an MPA network in Scotland's Seas?**

Yes  No

Comments

**2. Do you have any comments on the case for designation, management options and socioeconomic assessment for the *Small Isles* possible Nature Conservation MPA?**

Designation: Yes

The Sleat community is directly adjacent to the Small Isles Marine Protection Area but has not been included in the geographical designation of the area. The south Skye lochs of Scavaig, Slapin and Loch Eishort are all rich in biodiversity which has been made public in a number of publications and representations. The Sleat Community Council wishes to know why the area mentioned above has NOT been included in the Small Isles MPA consultation given the reasons that will be shown below. It is also believed that the survey of the south Skye lochs mentioned above was originally due to be extensively surveyed at the time the Small Isles area was being assessed but due to bad weather this was abandoned. We would like to know why this was not pursued subsequently. We are fully supportive of the creation of a Marine Protected Area concentrating the Small Isles site but we wish the survey to be completed that will highlight the complexity of the biodiversity of the area of Lochs Slapin, Scavaig and Eishort

Management Options: Yes

The presence of specialised habitats and species in these lochs are vital in protecting an area of south Skye from further aquaculture development. There has been significant media coverage in recent years of the damage that is done to the environment from the presence of large fish-farm sites where the biomass totals can be as much as 3000 tonnes. With the rapid increase in aquaculture sites on Skye it is likely that given further developments in an uncontrolled way will decimate the habitats and species that are present in all three sea lochs. These included maerl beds, sea grasses and sea pens. It is vital that in years to come a Marine Protected Area is allowed to be viewed as a site where development is controlled and can be used as a bench mark for generations to come.

Socioeconomic Assessment: Yes

## **Sustainability Appraisal**

- 3. Do you have any comments on the Sustainability Appraisal of the MPA network as a whole?**

Yes

The Sleat Community Council supports the creation of the MPS network and we recognise the huge amount of effort that has been extended to survey and review the areas in question

## **Final Thoughts**

- 4. On the basis of your preferences on which pMPAs should be designated, do you view this to form a complete or ecologically coherent network, subject to the completion and recommendations of SNH's further work on the 4 remaining search locations?**

Yes

Yes

- 5. Do you have any other comments on the case for designation, management options, environmental or socioeconomic assessments of the pMPAs, or the network as a whole?**

Yes

This community supports the MPA process unreservedly but we would like to see the area of the lochs of south Skye to be included in the Small Isles possible Marine Protected Area