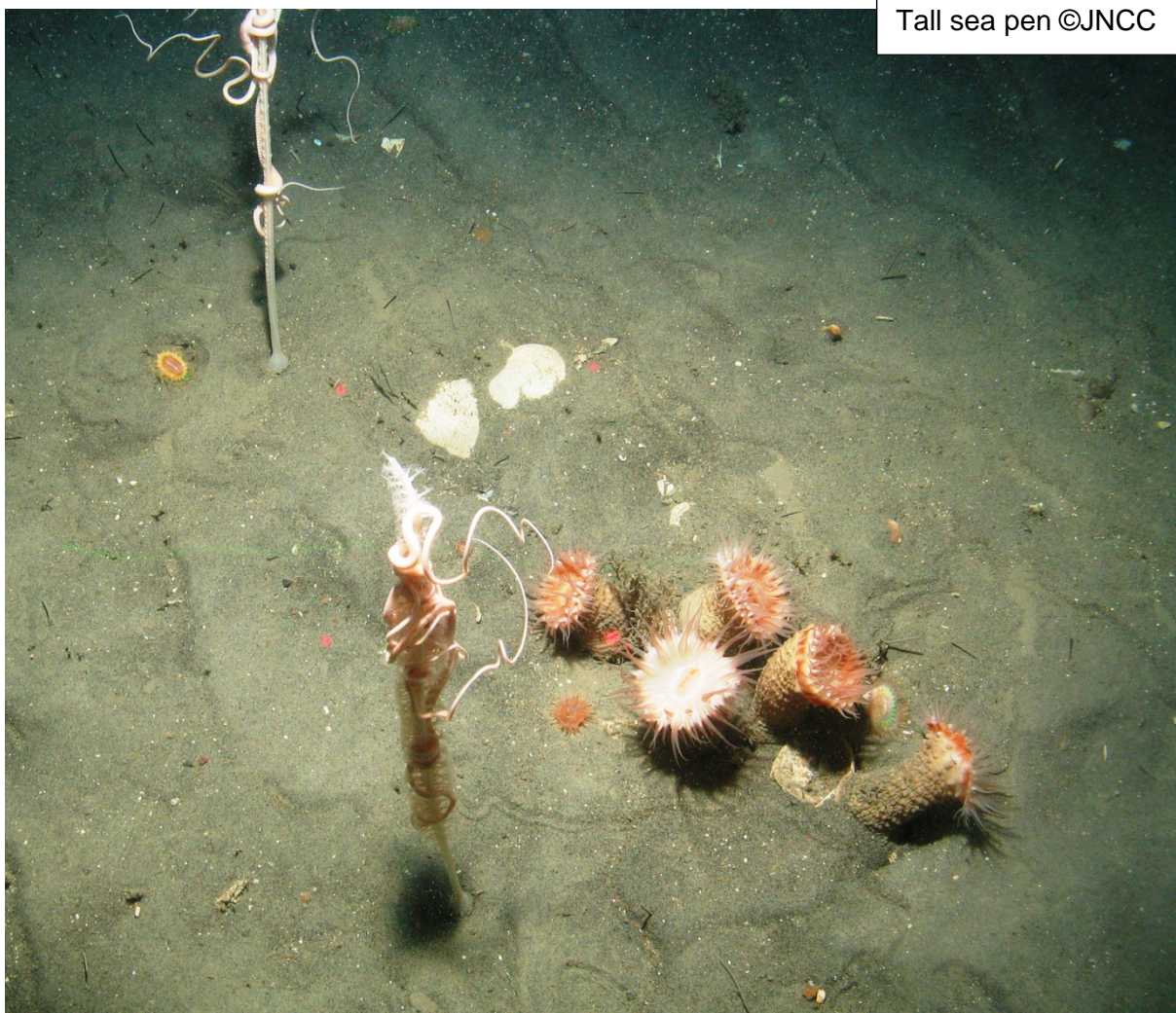


Copies of all the written responses received to a consultation exercise (except those where the individual or organisation requested confidentiality) are placed in the Scottish Government library at Saughton House, Edinburgh (K Spur, Saughton House, Broomhouse Drive, Edinburgh, EH113XD, telephone 0131 244 4565).

All Scottish Government consultation papers and related publications (e.g. analysis of response reports) can be accessed at: Scottish Government consultations (<http://www.scotland.gov.uk/consultations>) The views and suggestions detailed in consultation responses are analysed and used as part of the decision making process, along with a range of other available information and evidence. Depending on the nature of the consultation exercise the responses received may: indicate the need for policy development or review; inform the development of a particular policy; help decisions to be made between alternative policy proposals; be used to finalise legislation before it is implemented. Final decisions on the issues under consideration will also take account of a range of other factors, including other available information and research evidence.

While details of particular circumstances described in a response to a consultation exercise may usefully inform the policy process, consultation exercises cannot address individual concerns and comments, which should be directed to the relevant public body.



CONSULTATION QUESTIONS

1. Do you support the development of an MPA network in Scotland's Seas?

Yes

The proposed MPAs must be designated in line with scientific advice, and be supported by effective management that ensures the conservation and recovery of marine ecosystems.

Individual possible Nature Conservation MPAs

5. Do you have any comments on the case for designation, management options and socioeconomic assessment for the *Faroe-Shetland sponge belt* possible Nature Conservation MPA?

Designation: Yes

This seems one of the most important proposed MPAs

9. Do you have any comments on the case for designation, management options and socioeconomic assessment for the *Loch Sunart* possible Nature Conservation MPA?

Designation: Yes

Another particularly important MPA.

10. Do you have any comments on the case for designation, management options and socioeconomic assessment for the *Loch Sunart to the Sound of Jura* possible Nature Conservation MPA?

Designation: Yes

Another particularly important MPA.

15. Do you have any comments on the case for designation, management options and socioeconomic assessment for the *North-west sea lochs and Summer Isles* possible Nature Conservation MPA?

Designation: Yes

Yet another particularly important MPA.

Do you have any comments on the case for designation, management options and socioeconomic assessment for the *Small Isles* possible Nature Conservation MPA?

Designation:

Yes

Another vitally important MPA.

Choices to represent features in the MPA Network

28. Recognising the scientific advice from JNCC included alternatives for representing offshore subtidal sands and gravels, ocean quahog and shelf banks and mounds in the Southern North Sea, do you have a preference or comments on the following combinations to represent these features, bearing in mind Turbot Bank will need to be designated to represent sandeel in this region:

Firth of Forth Banks Complex

Turbot bank and Norwegian Boundary Sedimentary Plain

Or Firth of Forth Banks Complex, Turbot bank and Norwegian Boundary Sedimentary Plain

The Firth of Forth Banks is unique and must be designated as a Nature Conservation MPA. The scientific advice clearly recommends the designation of this site over the alternative proposal of Turbot Bank and Norwegian Sediment Plain.

29. Do you have any comments on the case for designation, management options and socioeconomic assessments for the preference you have indicated in the question above, regarding alternatives for representing offshore subtidal sands and gravels, ocean quahog and shelf banks and mounds in the Southern North Sea?

No

Comments

30. Recognising the scientific advice from JNCC included alternatives for representing the burrowed mud feature in the Fladens, do you have a preference or comments on the following combinations to represent these features, bearing in mind the part of Central Fladen (known as Central Fladen (Core)) containing tall seapen (*Funiculina quadrangularis*) will need to be designated to represent tall seapen in this region:

Central Fladen pMPA only
The tall sea-pen component of Central Fladen, plus Western Fladen
Or the tall sea-pen component of Central Fladen, plus South-East Fladen.

Comments

31. Do you have any comments on the case for designation, management options and socioeconomic assessments for the preference you have indicated in the question above, regarding alternatives for representing the burrowed mud feature in the Fladens?

No

Comments

32. Recognising the scientific advice from JNCC included alternatives for representing offshore subtidal sands and gravels, offshore deep sea mud, and burrowed mud in OSPAR Regions III and V, do you have a preference or comments on the following combinations to represent these features:

South-West Sula Sgeir and Hebridean slope
Or Geikie slide and Hebridean slope

Comments

33. Do you have any comments on the case for designation, management options and socioeconomic assessments for the preference you have indicated in the question above, regarding alternatives for representing offshore subtidal sands and gravels, offshore deep sea mud, and burrowed mud in OSPAR Regions III and V?

No

Comments

Sustainability Appraisal

34. Do you have any comments on the Sustainability Appraisal of the MPA network as a whole?

No

Comments

Final Thoughts

35. On the basis of your preferences on which pMPAs should be designated, do you view this to form a complete or ecologically coherent network, subject to the completion and recommendations of SNH's further work on the 4 remaining search locations?

Yes

The proposed network of MPAs is not complete. It is vital that all the proposed MPAs are designated and additional MPAs should be proposed as soon as possible to **protect important and diminishing species** including basking shark, minke whale, white-beaked dolphin, Risso's dolphin, common skate and to **provide adequate sites for birds at sea.**

36. Do you have any other comments on the case for designation, management options, environmental or socioeconomic assessments of the pMPAs, or the network as a whole?

No

Comments

Thank You.