

**Scottish Sea
Fisheries
Statistics
2006**



Scottish Sea Fisheries Statistics 2006

© Crown copyright 2007

ISBN: 978 0 7559 6745 2

Scottish Government
St Andrew's House
Edinburgh
EH1 3DG

Produced for the Scottish Government by RR Donnelley B53047 09/07

Published by the Scottish Government, September, 2007

Further copies are available from
Blackwell's Bookshop
53 South Bridge
Edinburgh
EH1 1YS

100% of this document is printed on recycled paper and is 100% recyclable.

Scottish Sea Fisheries Statistics, 2006

Contents

Vessels

	Page
Overview of the Scottish Fishing Fleet	1-4
Table 1. Active Scottish based vessels, power, by overall length group, 31st December 1996 to 2006	5
Chart 1. Landings by Scottish based vessels, 1992 to 2006	5
Chart 2. Active Scottish based vessels, 1996 to 2006	5
Table 2. Active Scottish based vessels, tonnage and power by overall length group and age group, 31st December 2006	6
Chart 3. Scottish based vessels by type, 1996 to 2006	6
Chart 4. Scottish based vessels, average length for demersal, pelagic and shellfish vessels, 1996 to 2006	6
Table 3. Active Scottish based vessels: number, tonnage and power, by overall length group, 31st December 2006	7
Table 4. Active Scottish based vessels, by main fishing method, 31st December 1996 to 2006	7
Table 5. Active Scottish based vessels, by main fishing method and overall length group, 31st December 2006	7
Table 6. Active Scottish based vessels by base district and overall length group, 31st December 2006	8
Table 7. Changes to the Scottish based over 10 metres fleet , 31st December 2005 to 2006	8
Table 8. Scottish based sea fishing licences by category, 31st December 2004 to 2006	8
Table 9. Scottish based sea fishing licences, vessel capacity units by type of licence, 31st December 2006	8
Table 10. Scottish based over 10 metres sea fishing licences by category, 31st December 2005 to 2006	8

Employment

Table 11. Employment in sea fishing, and Scottish labour force, 1996 to 2006	9
Table 12. Value of sea fish landings into Scotland by Scottish based vessels; fishermen employed, by selected region, 2006	9
Table 13. Number of fishermen employed on Scottish based vessels, 2002 to 2006	9
Table 14. Number of fishermen employed by district and employment status, 2006	9
Chart 5. Number of fishermen employed on Scottish based vessels, 1966 to 2006	9

Landings

Overview of Catches and Landings	10-15
Map Figure 1: Volume landed by district, 2006; Figure 2: Value landed by district, 2006	16
Table 15. Total Allowable Catches, UK quotas and liveweight landed by UK vessels, 2002 to 2006	17-19
Chart 6. UK percentage uptake of main quota stocks, 2006	19
Table 16. Fixed quota units by sea area and country, 1st January, 2007	19
Table 17. Live weight and value of landings, by species type, 2002 to 2006	20
Table 18. Voyages and landings by Scottish based vessels by landing district, 2005 and 2006	20
Table 19. Liveweight and value of landings into the UK by UK vessels, by main species and country of landing, 2002 to 2006	21
Table 20. Liveweight and value of landings into Scotland by UK vessels, by main species, 2002 to 2006	21
Table 21. Liveweight and value of landings into Scottish ports by UK vessels, by landing district and species type, 2002 to 2006	22
Table 22. Disposal of sea fish landed into Scotland by UK vessels, 2002 to 2006	22
Table 23. Liveweight and value of landings into Scotland by UK vessels, by landing district and main species, 2006	23,24
Chart 7. Average prices of landings into Scotland by UK vessels, by species type, 1989 to 2006	23
Chart 8. Liveweight landings into Scotland by UK vessels by species type, 1966 to 2006	24
Chart 9. Average prices of landings into Scotland, by species type and month, 2006	25
Table 24. Liveweight and value of landings into Scotland by foreign vessels, by main species, 2002 to 2006	25
Table 25. Liveweight and value of landings into Scotland by foreign vessels, by country of origin, 2002 to 2006	25
Table 26. Liveweight and value of landings into Scotland by foreign vessels, by landing district, 2002 to 2006	25
Table 27. Liveweight and value of landings by Scottish based vessels, by main species, 2002 to 2006	26
Chart 10. Value of landings at 2006 prices per Scottish based over 10 metres vessel, by vessel type, 1990 to 2006	27
Table 28. Liveweight and value of landings abroad by Scottish based vessels, by country of landing, 2002 to 2006	27
Table 29. Liveweight and value of landings from specified ICES areas by Scottish based vessels, by main species, 2006	27
Table 30. Liveweight and value of landings by Scottish based vessels, by main species and overall vessel length group, 2006	28
Chart 11. Value of landings at 2006 prices by Scottish based vessels by species type, 1990 to 2006	28
Table 31. Liveweight and value of landings by Scottish based vessels, by main species and gear, 2006	29
Chart 12. Liveweight landings by Scottish based vessels by quarter, 2006	29,30
Chart 13. Average value of landings per day at sea by Scottish based over 10 metres vessels by vessel type, 2006	30
Chart 14. Effort days by Scottish based over 10 metres vessels by vessel type, 2006	30
Table 32. Effort days by Scottish based over 10 metres vessels by Ices area, 2006	30
Table 33. Effort days by Scottish based over 10 metres vessels by length group, 2006	30
Annex 1 Map of port districts and ports in Scotland	31
Annex 2 ICES fishing areas around the UK coastline	32

1. Overview of the Scottish Fishing Fleet

1.1 The regulation of the UK Fleet

The structure and capacity of the UK and Scottish fishing fleets has, since 1983, been dictated primarily by the EU Common Fisheries Policy (CFP). Between 1997 and 2002, fleet structure was managed within the CFP through the fourth Multi Annual Guidance Programme (MAGP) designed to tailor fleet capacity to available fish stocks across the EU. Under this programme the UK fishing fleet was divided into eight segments, defined primarily by broad fishing method¹, and capacity limits or effort reduction targets set for each segment. MAGP IV has now ended and has been replaced by global effort ceilings at member state level controlled through a system of entry/exit controls. In simple terms, a vessel can only enter the fleet when equivalent capacity has exited the fleet.

At a UK level to date, restrictive licensing has been the main Government instrument to bring the activities of the UK fishing fleet into line with MAGP and UK aims on fleet and catch management. Aside from a few limited exceptions, all vessels engaged in commercial sea fishing are required to hold a licence issued by UK Fisheries Departments. There are a finite number of licences in existence and no new licences are made available. This places a ceiling on the total number of vessels in the UK fishing fleet. In order to license new vessels, fishermen must acquire one or more existing licences from other previously licensed vessels. Capacity penalties are applied when licences are transferred, or aggregated to form a larger licence unit, and these, together with the restricted number of licences on issue, form a mechanism resulting in reductions in the capacity of the UK fleet.

The UK restrictive licensing controls, in combination with successive decommissioning schemes (1994-1997; 2001-2002 and 2003-2004), explain many of the fleet trends in recent years and the figures presented here are interpreted in this context where appropriate.

1.2 Fleet size

2006 saw a continuation of recent changes to the Scottish fleet, either directly or indirectly prompted by measures designed to conserve vulnerable whitefish stocks, particularly cod. The most important of these measures in recent years have been the two successive decommissioning schemes in 2001-2002 and 2003-04, under which 165 vessels were removed from the demersal fleet.

During 2006, it was discovered that the UK Core Vessel file, the official source of information on UK vessels, had been notified of Scottish vessels becoming inactive. while they were still

¹ Pelagic Gears; Beam trawl; Demersal seines and nephrops; Lines & Nets; Shellfish-Mobile; Shellfish-Fixed; Distant Water; and vessels under 10 metres

recorded on FIN as active. An exercise was conducted to take this information on board into FIN, leading to an appreciable drop in the number of active vessels recorded. Because this issue affected the figures for earlier years, figures have been revised.

There were 2,224 active fishing vessels based in Scotland at the end of 2006, a net reduction of 62 (3 per cent) since 2005 (Table 1). There were reductions in the number of active vessels in 12 out of 18 districts (Table I below) with the losses mainly in the North West including the isles. The number of active vessels did increase in three districts Buckie (+6 vessels), Fraserburgh (+4 vessels) and Peterhead (+1 vessel).

Table I: Changes in numbers of active Scottish based vessels 2005-06, by district.

District	Number of active vessels		Change
	2005	2006	
Eyemouth	110	98	-12
Pittenweem	102	101	-1
Aberdeen	93	93	0
Peterhead	98	99	1
Fraserburgh	217	221	4
Buckie	73	79	6
Wick	123	120	-3
Orkney	161	153	-8
Shetland	195	185	-10
Stornoway	311	303	-8
Lochinver	18	18	0
Kinlochbervie	26	26	0
Ullapool	69	67	-2
Mallaig	84	71	-13
Oban	140	132	-8
Campbeltown	162	161	-1
Ayr	161	158	-3
Portree	143	139	-4
Total	2,286	2,224	-62

Source: Table 6 and revised equivalent 2005 figures

The under 10 metre segment of the fleet decreased by 49 vessels (3 per cent) to 1,518 over the year to December 2006 and has decreased by 11 per cent since 1996 (Table 1). The over 10 metres fleet decreased by 13 vessels (2 per cent) in 2006. This segment is now 39 per cent smaller than in 1996, a trend which has affected the demersal (down 46 per cent), pelagic (down 60 per cent) and shellfish (down 31 per cent) sectors.

1.3 Vessel Capacity

1.3.1 Overall length

The average overall length of vessels in the over 10m fleet was 19.05 metres in 2006, a shortening of ten centimetres on the 2005 figure. Average vessel length observed has been decreasing since 2000. Since 2000, the average length within the over 10m segment has fallen by a metre and is now at the lowest length in the decade (Table 1).

1.3.2 Engine Power

Engine power statistics in earlier years have been underestimated to an unknown degree, due the inclusion of vessels with engines operating at a higher power than permitted on their licences. In November 1999, in response to this problem, Fisheries Departments introduced special (concessionary) licensing arrangements and a timetable for compliance with engine power controls. Under the compliance timetable licence holders who have admitted to under declaration, had until the end of 2004 to ensure that either: (i) their true engine power is registered and to have acquired enough licence entitlement to cover this, or (ii) to have de-rated their engine to the figure on their licence. In practice, most have chosen to acquire extra licences to cover their operational engine power. Consequently, it needs to be borne in mind that after 1999, the trends in average engine power shown in Table 1 are complicated by the effect of an increasing number of owners declaring their true, higher, engine power. Nevertheless, while this bias makes the actual rate of change unclear, it is clear that Scottish based vessels are now fishing with greater engine power on average than in the past. However recent years show that this may have stabilised.

The total registered engine power of the over 10m Scottish fleet was 324 thousand kilowatts in 2006 (Table 1) a fall of four per cent since 2005 and 20 per cent lower than 1996. However, average engine power, at 459 kW, has increased by 32 per cent since 1996. The opposing trends of decreasing total fleet engine capacity and increasing average engine power per can be explained by a combination of factors: (i) the 39 per cent reduction in the number of vessels in the over 10 m fleet since 1996 (Section 1.2); (ii) the “natural wastage” of licensed engine power that often accompanies the aggregation of several licences onto a single vessel² and; (iii) since 1999, the progressive correction of under declared engine power, in line with the concessionary licensing arrangements noted above.

² Occurs when the sum of the engine power capacities attached to the licences used in an aggregation, exceeds the maximum engine power of the vessel on which the aggregate licence is used. The excess engine power entitlement is then effectively lost from the fleet total.

1.4 Employment

The 2005 employment figures have been revised because they were affected by an understatement in the figures recorded by Peterhead Fisheries Office. The 2005 figures for Peterhead have been estimated as being the same as the 2006 figures.

Total employment in the catching sector increased by one per cent to 5,205 between 2005 to 2006 (Table 11), while the number of fishermen regularly employed on Scottish based vessels at 4,109 was four per cent higher than in 2005 (Table 13). The number of irregularly employed (mainly part time) fishermen in 2006 decreased by 111 to 999.

At a district level, the largest increase in the recorded numbers in regular employment occurred at Stornoway (+61) jobs. Once again Fraserburgh has the most fishermen in regular and total employment.

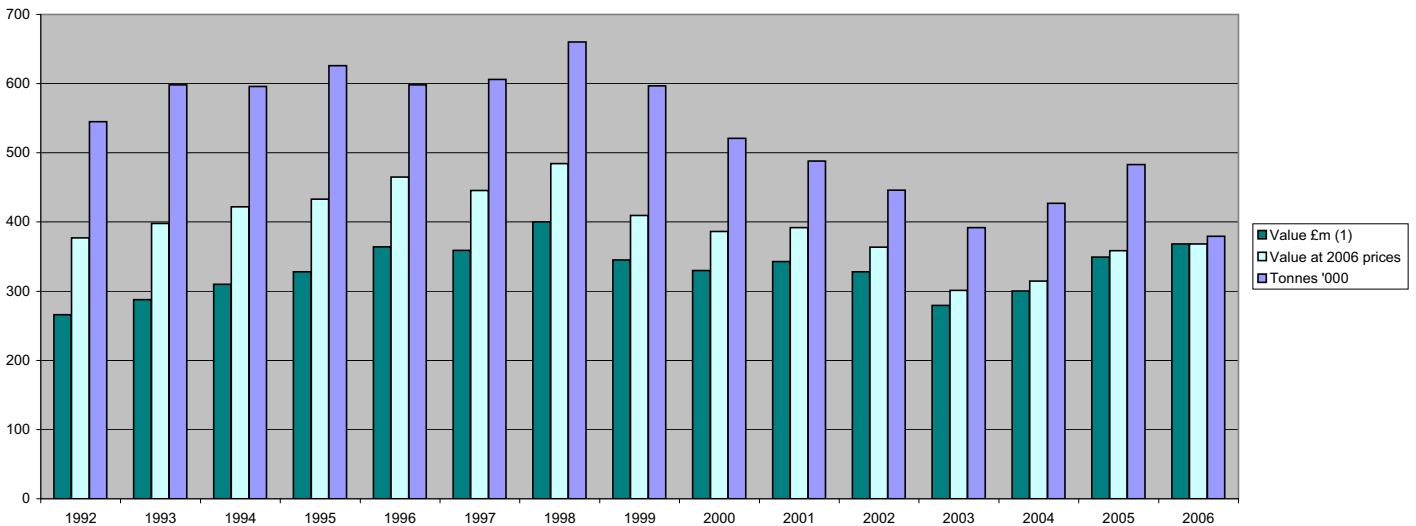
Table 1. Active⁽¹⁾ Scottish based vessels and power, by overall length group, 31st December 1996 to 2006

		10 metres	>10 <15	15<20	20<25	25<30	30<35	35 metres	Total	Over 10 metres	
		& under	metres	metres	metres	metres	metres	& over		Number	Average
Number	1996 (r)	1,705	361	311	268	134	23	68	2,870	1,165	19.71
	1997 (r)	1,643	348	298	244	134	18	67	2,752	1,109	19.69
	1998 (r)	1,605	315	274	226	130	17	64	2,631	1,026	19.83
	1999 (r)	1,584	297	263	208	128	19	64	2,563	979	19.95
	2000 (r)	1,593	286	253	199	125	22	64	2,542	949	20.06
	2001 (r)	1,604	280	259	202	118	23	62	2,548	944	20.02
	2002 (r)	1,615	274	235	148	91	18	62	2,443	828	19.66
	2003 (r)	1,588	270	223	117	66	16	57	2,337	749	19.20
	2004 (r)	1,595	269	212	113	64	17	55	2,325	730	19.16
	2005 (r)	1,567	270	204	112	61	15	57	2,286	719	19.15
	2006	1,518	273	193	110	61	16	53	2,224	706	19.05
Total power (kW)	1996 (r)	72,202	42,866	71,824	103,662	70,715	14,289	102,639	478,196	405,994	348.49
	1997 (r)	70,686	41,600	68,699	95,886	70,953	11,047	97,583	456,454	385,768	347.85
	1998 (r)	70,085	37,815	63,640	90,502	69,356	12,781	100,966	445,146	375,061	365.56
	1999 (r)	71,120	35,734	61,524	83,593	69,632	15,002	102,209	438,814	367,694	375.58
	2000 (r)	76,082	34,878	60,289	82,024	69,701	17,601	106,798	447,373	371,291	391.24
	2001 (r)	79,189	35,055	64,844	85,258	66,966	19,362	120,971	471,644	392,455	415.74
	2002 (r)	80,489	35,146	60,512	65,161	53,578	14,093	128,010	436,989	356,499	430.55
	2003 (r)	80,652	35,976	58,113	52,524	38,883	13,215	141,665	421,028	340,376	454.44
	2004 (r)	81,562	36,811	55,675	50,857	37,618	13,886	147,841	424,250	342,688	469.44
	2005 (r)	82,073	37,413	54,694	50,324	35,466	11,854	148,895	420,718	338,645	470.99
	2006	80,131	38,201	51,802	49,751	35,440	13,174	135,966	404,464	324,334	459.40

Scottish based vessels are those licensed at a Scottish port; Scottish registered vessels are those registered at a Scottish port on the Register of Shipping and Seamen. From the beginning of 1993 there was a requirement that all 10 metres and under vessels should be licensed.

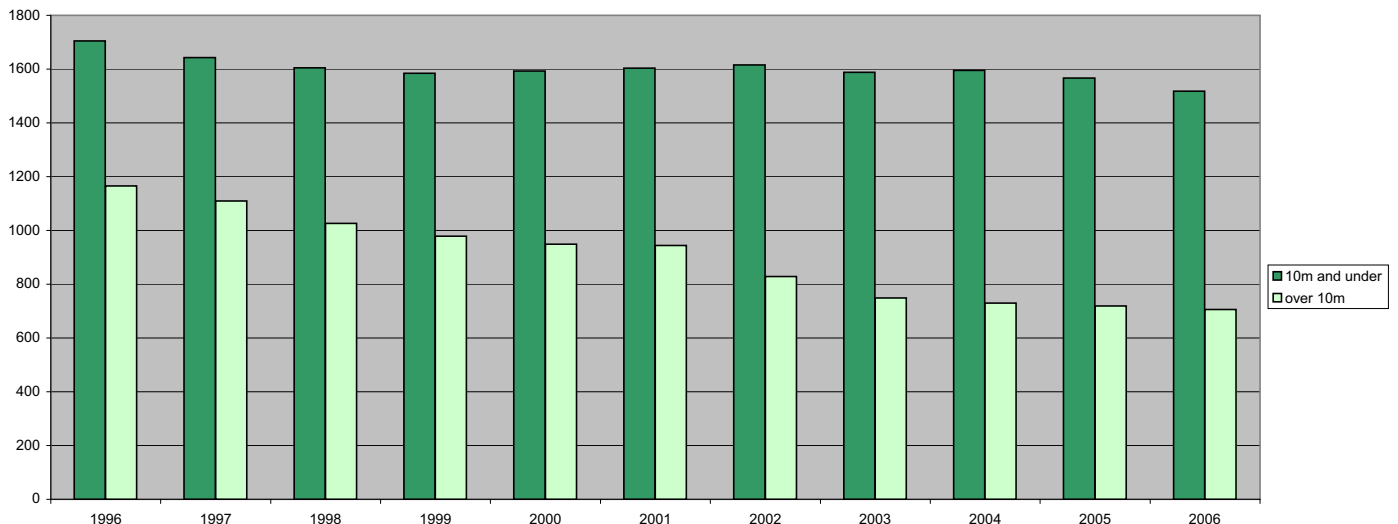
⁽¹⁾ During 2006, it was discovered that the UK Core Vessel file, the official source of information on UK vessels, had been notified of Scottish vessels becoming inactive while they were still recorded on FIN as active. An exercise was conducted to take this information on board into FIN, leading to an appreciable drop in the number of active vessels recorded. Because this issue affected the figures for earlier years, figures have been revised.

Chart 1. Landings by Scottish based vessels, 1992 to 2006



(1) When the Register of Buyers and Sellers (RBS) was introduced in September 2005, Sales Notes were not initially required for sales of shellfish and information on the value of such landings is consequently missing. The value has therefore been estimated for a number of landings, mostly shellfish, relating to voyages starting on or after 1 September 2005.

Chart 2. Active⁽¹⁾ Scottish based vessels, 1996 to 2006



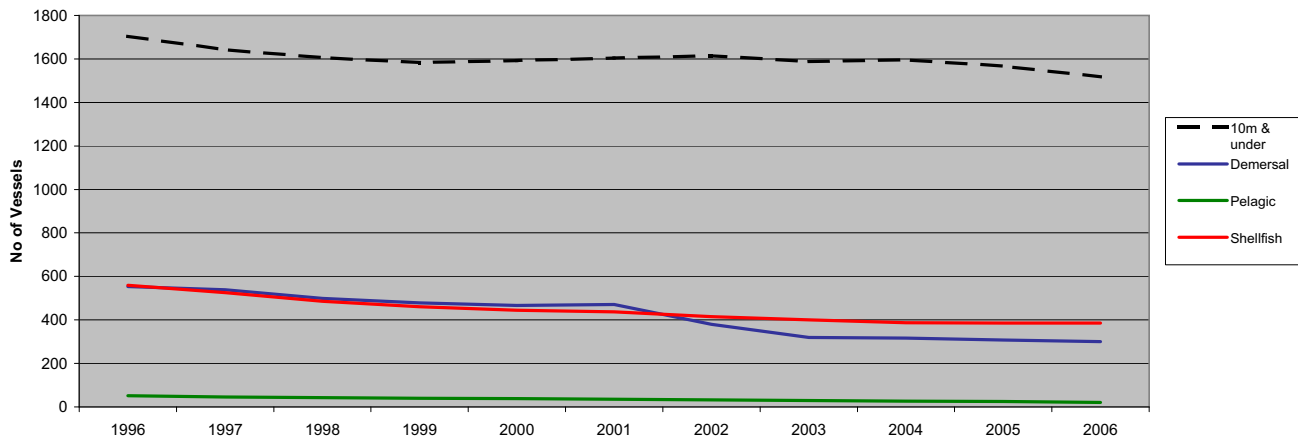
⁽¹⁾ See footnote to Table 1

Table 2. Active Scottish based vessels, tonnage and power by overall length group and age group, 31st December 2006

	10 metres & under	>10 <15 metres	15<20 metres	20<25 metres	25<30 metres	30<35 metres	35 metres & over	Total	Over 10 metres
Number									
Under 10 years	169	25	25	20	10	5	19	273	104
10<15	130	12	10	10	8	1	6	177	47
15<20	234	66	17	26	15	1	6	365	131
20<25	170	34	24	20	10	1	4	263	93
25<30	170	27	16	13	5	-	4	235	65
30<35	98	37	41	13	6	3	4	202	104
35 years & over	137	44	54	4	5	4	5	253	116
Not known	410	28	6	4	2	1	5	456	46
Total	1,518	273	193	110	61	16	53	2,224	706
Average age (years)	22.4	24.4	26.8	19.8	20.1	23.8	16.9	22.8	23.4
Total tonnage									
Under 10 years	874	625	3,447	4,593	3,687	2,791	31,740	47,757	46,883
10<15	459	197	1,098	1,921	2,650	370	6,507	13,202	12,743
15<20	837	1,137	1,804	4,465	3,652	217	3,118	15,230	14,393
20<25	654	562	2,459	3,318	2,157	375	1,968	11,493	10,839
25<30	630	444	1,091	1,773	922	-	1,485	6,345	5,715
30<35	434	534	2,414	1,643	1,025	633	1,400	8,083	7,649
35 years & over	500	650	2,444	408	791	903	1,784	7,480	6,980
Not known	1,261	387	715	550	245	224	4,011	7,393	6,132
Total	5,649	4,537	15,473	18,670	15,129	5,513	52,013	116,984	111,335
Average tonnage	4	17	80	170	248	345	981	53	158
Total power (kW)									
Under 10 years	15,157	5,175	10,172	11,916	7,958	6,442	84,868	141,688	126,531
10<15	7,937	2,021	2,972	5,588	5,925	885	14,226	39,555	31,617
15<20	11,958	10,429	5,614	10,916	8,185	746	8,281	56,130	44,171
20<25	7,992	4,044	7,620	8,560	5,110	855	6,282	40,462	32,471
25<30	7,356	3,343	4,029	5,137	2,501	-	6,792	29,158	21,802
30<35	4,610	4,063	9,262	4,717	2,959	1,856	3,441	30,908	26,298
35 years & over	4,392	4,482	10,226	1,347	1,987	1,887	3,272	27,593	23,201
Not known	20,728	4,645	1,907	1,570	814	503	8,803	38,970	18,242
Total	80,131	38,201	51,802	49,751	35,440	13,174	135,966	404,464	324,334
Average power	53	140	268	452	581	823	2,565	182	459

Year on year tonnage comparisons should be made with caution, since these figures take no account of the phased replacement of GRT with GT during the period 1996-2003.

Chart 3. Scottish based vessels by type, 1996 to 2006



From the beginning of 1993 there was a requirement that all 10 metres and under vessels should be licensed.

Chart 4. Scottish based vessels, average length for Demersal, Pelagic and Shellfish vessels, 1996 to 2006

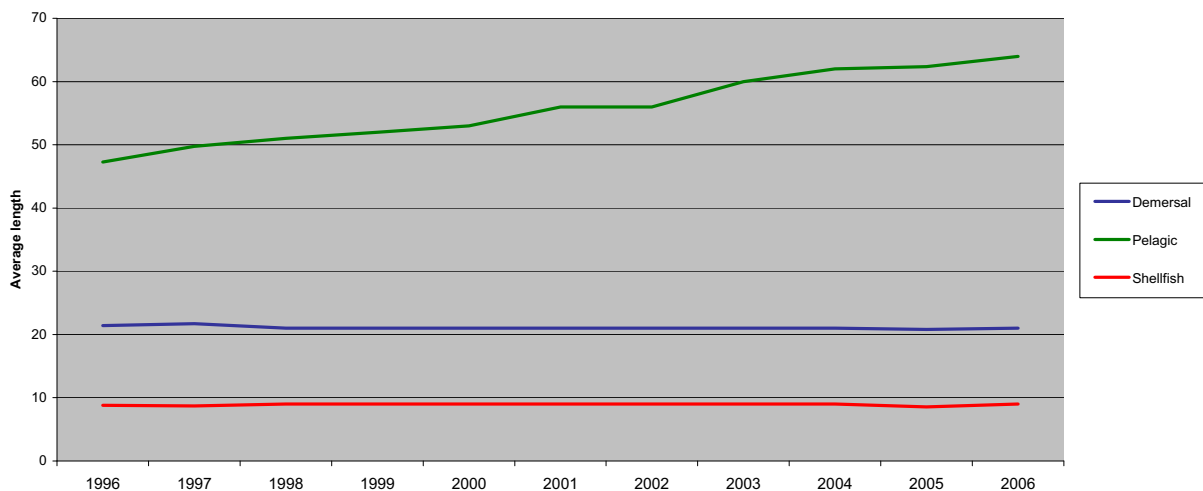


Table 3. Active Scottish based vessels: number, tonnage and power by overall length group, 31st December 2006

Length	Tonnes	Vessels	Total tonnes	Length	kW	Vessels	Total power	
10m & under	<40	1,518	5,649	10m & under	<40	814	14,896	
>10 <15	<40	266	4,235	>10<15	40<75	323	18,035	
	40<60	7	302		75<150	295	30,200	
	Total		273		4,537	150<225	69	12,557
15<20	<40	24	860		225<375	17	4,443	
	40<60	63	3,021		Total		1,518	80,131
	60<80	26	1,752	15<20	<40	2	73	
	80<100	20	1,785		40<75	27	1,727	
	100<150	44	5,304		75<150	151	16,390	
	150<200	16	2,752		150<225	64	12,097	
Total		193	15,473		225<375	28	7,437	
20<25	40<60	1	57	375<550	1	477		
	60<80	1	72	Total		273	38,201	
	80<100	6	534	20<25	75<150	17	2,202	
	100<150	33	4,389		150<225	61	11,664	
	150<200	46	7,931		225<375	87	25,545	
	200<300	19	4,421		375<550	27	11,772	
	300<500	4	1,266		550<750	1	620	
Total		110	18,670	Total		193	51,802	
25<30	80<100	1	97	25<30	150<225	1	221	
	100<150	3	390		225<375	34	11,402	
	150<200	13	2,256		375<550	56	25,410	
	200<300	28	6,558		550<750	17	10,946	
	300<500	16	5,828		Over 750	2	1,772	
	Total		61	15,129	Total		110	49,751
30<35	150<200	3	544	30<35	150<225	2	442	
	200<300	6	1,433		225<375	4	1,329	
	300<500	2	745		375<550	22	10,648	
	Over 500	5	2,791		550<750	29	18,884	
	Total		16		5,513	Over 750	4	4,137
35 & over	200<300	3	838	Total		61	35,440	
	300<500	21	8,333	35 & over	375<550	3	1,507	
	Over 500	29	42,842		550<750	9	6,191	
	Total		53		52,013	Over 750	41	128,267
Total		53	52,013		Total		53	135,966
Total	Under 40	1,808	10,743	Total	Under 40	816	14,969	
	40<60	71	3,380		40<75	350	19,762	
	60<80	27	1,824		75<150	463	48,792	
	80<100	27	2,416		150<225	197	36,981	
	100<150	80	10,082		225<375	170	50,156	
	150<200	78	13,483		375<550	114	52,204	
	200<300	56	13,250		550<750	61	39,916	
	300<500	43	16,172		Over 750	53	141,685	
	Over 500	34	45,633		Total		2,224	404,464
	Total		2,224		116,984	Total		2,224

Year on year tonnage comparisons should be made with caution, since these figures take no account of the phased replacement of GRT with GT during the period 1996-2003.

Table 4. Active⁽¹⁾ Scottish based vessels by main fishing method, 31st December 1996 to 2006

	10m & under				Over 10m										Total	Total		
	Nephrops trawl	Creel fishing	Other	Total	Pelagic				Demersal				Shellfish					
					Purse seine	Pelagic trawl	Other	Total	Trawl	Seine	Lines	Other	Total	Nephrops trawl			Other	Total
1996 (r)	54	1,542	109	1,705	34	18	-	52	409	122	14	8	553	304	256	560	1,165	2,870
1997 (r)	63	1,469	111	1,643	27	19	-	46	413	103	8	14	538	282	243	525	1,109	2,752
1998 (r)	66	1,417	122	1,605	25	17	-	42	384	96	5	14	499	249	236	485	1,026	2,631
1999 (r)	73	1,391	120	1,584	21	19	-	40	374	87	4	14	479	237	223	460	979	2,563
2000 (r)	88	1,383	122	1,593	18	20	-	38	366	85	4	11	466	223	222	445	949	2,542
2001 (r)	94	1,390	120	1,604	10	26	-	36	378	79	5	9	471	221	216	437	944	2,548
2002 (r)	94	1,399	122	1,615	9	24	-	33	319	44	6	11	380	204	211	415	828	2,443
2003 (r)	99	1,371	118	1,588	8	21	-	29	272	33	4	11	320	193	207	400	749	2,337
2004 (r)	103	1,371	121	1,595	6	20	-	26	265	33	9	10	317	181	206	387	730	2,325
2005 (r)	100	1,347	120	1,567	6	19	-	25	255	34	9	10	308	177	209	386	719	2,286
2006	98	1,299	121	1,518	5	16	-	21	247	33	10	10	300	171	214	385	706	2,224

From the beginning of 1993 there was a requirement that all 10 metres and under vessels should be licensed.

⁽¹⁾ See footnote to Table 1

Table 5. Active Scottish based vessels, by main fishing method and overall length group, 31st December 2006

	10 metres & Under	>10 <15 metres	15<18 metres	18<25 metres	25<35 metres	35<50 metres	50 metres & over	Total
Demersal single trawl	20	20	26	95	36	8	-	205
Demersal pair trawl	-	-	4	14	7	1	-	26
Seine net	-	-	2	21	9	1	-	33
Lines	36	-	-	-	7	3	-	46
Demersal gill nets	9	2	-	-	2	5	-	18
Demersal twin/mult trawl	1	-	1	13	5	-	-	20
Beam trawl	1	1	-	1	2	13	-	18
Other demersal	1	-	-	1	-	-	-	2
Demersal total	68	23	33	145	68	31	-	368
Purse seine	-	-	-	-	-	1	4	5
Pelagic trawl	-	-	-	-	-	-	16	16
Other pelagic	-	-	-	-	-	-	-	-
Pelagic total	-	-	-	-	-	1	20	21
Creel fishing	1,299	113	6	2	-	-	-	1,420
Nephrops trawl	98	102	52	16	1	-	-	269
Mechanical dredging	18	30	27	22	8	1	-	106
Suction dredging	2	2	-	-	-	-	-	4
Shell fishing by hand	33	3	-	-	-	-	-	36
Shellfish total	1,450	250	85	40	9	1	-	1,835
Total	1,518	273	118	185	77	33	20	2,224

Table 6. Active Scottish based vessels by base district and overall length group, 31st December 2006

	10 metres & Under	>10 <15 metres	15<18 metres	18<25 metres	25<35 metres	35<50 metres	50 metres & over	Total
Eyemouth	67	18	4	8	1	-	-	98
Pittenweem	82	14	2	3	-	-	-	101
Aberdeen	75	8	-	7	2	1	-	93
Peterhead	36	2	3	26	16	14	2	99
Fraserburgh	102	14	13	57	22	2	11	221
Buckie	36	3	5	28	5	2	-	79
Wick	97	12	4	5	2	-	-	120
Total east coast	495	71	31	134	48	19	13	811
Orkney	111	31	5	1	5	-	-	153
Shetland	145	13	3	11	5	1	7	185
Stornoway	240	41	19	3	-	-	-	303
Total Islands	496	85	27	15	10	1	7	641
Lochinver	15	1	-	2	-	-	-	18
Kinlochbervie	22	1	-	3	-	-	-	26
Ullapool	46	15	5	1	-	-	-	67
Mallaig	42	9	11	8	1	-	-	71
Oban	95	21	8	7	1	-	-	132
Campbeltown	111	30	18	2	-	-	-	161
Ayr	78	21	16	13	17	13	-	158
Portree	118	19	2	-	-	-	-	139
Total west coast	527	117	60	36	19	13	-	772
Total	1,518	273	118	185	77	33	20	2,224

A district is a geographical area within which there are a number of creeks or ports.

Table 7. Changes to the Scottish based, over 10 metres fleet, 31st December 2005 to 2006

	>10 <15 metres	15<20 metres	20<25 metres	25<30 metres	30<35 metres	35 metres & over
Active ⁽¹⁾ Scottish vessels, 31st December 2005 (r)	270	204	112	61	15	57
Continued to be based in Scotland	255	188	109	60	15	51
Transferred to another UK port	4	5	-	-	-	2
Became inactive	11	11	3	1	-	4
Transferred from another UK port	15	3	-	1	-	1
Became active	-	-	-	-	1	-
Newly built vessels	3	2	1	-	-	1
Change of vessel length category	-	-	-	-	-	-
Active Scottish vessels, 31st December 2006	273	193	110	61	16	53

⁽¹⁾ See footnote to Table 1

Table 8. Scottish based sea fishing licences by category, 31st December 2004 to 2006

	Vessel licences				Entitlements				Total			
	Category A	Category B	Category C	<=10m	Category A	Category B	Category C	<=10m	Category A	Category B	Category C	<=10m
2004 (r)	580	86	64	1,595	35	4	6	85	615	90	70	1,680
2005 (r)	572	84	63	1,567	54	2	9	95	626	86	72	1,662
2006	559	85	62	1,518	47	1	7	117	606	86	69	1,635

In 2006, includes 21 pelagic licences (category A) on vessels.

Category A licences allow full access to all stocks available to UK vessels.

Category B licences allow only restricted access to some UK available stocks.

Category C licences further restrict the range of stocks that can be fished.

Table 9. Scottish based sea fishing licences: vessel capacity units by type of licence, 31st December 2006

	On vessels				Entitlements				Total			
	Category A	Category B	Category C	<=10m	Category A	Category B	Category C	<=10m	Category A	Category B	Category C	<=10m
Pelagic licences	61,357	-	-	-	13,642	-	-	-	74,999	-	-	-
Other licences	162,769	9,840	10,019	68,168	6,434	79	695	2,211	169,203	9,919	10,714	70,379

Table 10. Scottish based, over 10 metres sea fishing licences, by category, 31st December 2005 to 2006

	On vessels			Entitlements		
	Category A	Category B	Category C	Category A	Category B	Category C
Scottish based licences, 31st December 2005 (r)	572	84	63	54	2	9
Remained on Scottish based vessels	529	81	58	24	1	5
Became Scottish entitlements	20	1	3	17	-	2
Transferred/aggregated to UK vessels	22	2	1	7	1	2
Other losses	1	-	1	6	-	-
Placed on vessel from Scottish entitlements	17	2	2	23	-	2
Transferred/aggregated from other UK ports	13	2	2	-	-	-
Scottish based licences, 31st December 2006	559	85	62	47	1	7

Table 11. Employment in sea fishing and Scottish labour force, 1996 to 2006

	1996	1997	1998	1999	2000	2001	2002	2003	2004	2005 (r)	2006
Total employed in the catching sector	8,084	8,194	7,771	7,330	6,902	6,637	5,707	5,276	5,275	5,155	5,205
Total labour force ('000)	2,278	2,299	2,298	2,280	2,334	2,341	2,357	2,367	2,410	2,415	2,448
Employment in fishing as % of labour force	0.4	0.4	0.3	0.3	0.3	0.3	0.2	0.2	0.2	0.2	0.2

Source : Labour Force Survey; Scottish Fishery Protection Agency. (Data prior to 1998 for LFS is based on 4 combined quarters, data from 1999 onwards is based on annual data)
 In 2005 Peterhead's employment figures were under-recorded. Their figures for 2005 have now been estimated as being the same as in 2006.

Table 12. Value of sea fish landings into Scotland by Scottish based vessels; fishermen employed, by selected region, 2006

Region	Landings (1) 2006	Labour force (2)	Fishermen employed	As % labour force
Eilean Siar, Orkney & Shetland	64.9	34	1,271	3.78
Aberdeenshire	135.8	121	1,262	1.04
Angus	1.2	53	61	0.11
Argyll & Bute	16.0	44	563	1.29
City of Aberdeen	11.8	109	59	0.05
City of Edinburgh	0.1	232	5	0.00
Dumfries and Galloway	3.1	70	212	0.30
East Lothian	1.9	47	52	0.11
Fife	4.0	173	136	0.08
Highland	56.6	103	773	0.75
Moray	3.2	42	255	0.61
North Ayrshire	0.6	59	25	0.04
Scottish Borders	4.3	53	119	0.22
South Ayrshire	4.3	50	412	0.82
Total	308	1,189	5,205	0.44

(1) £ million (2) thousands, Office for National Statistics

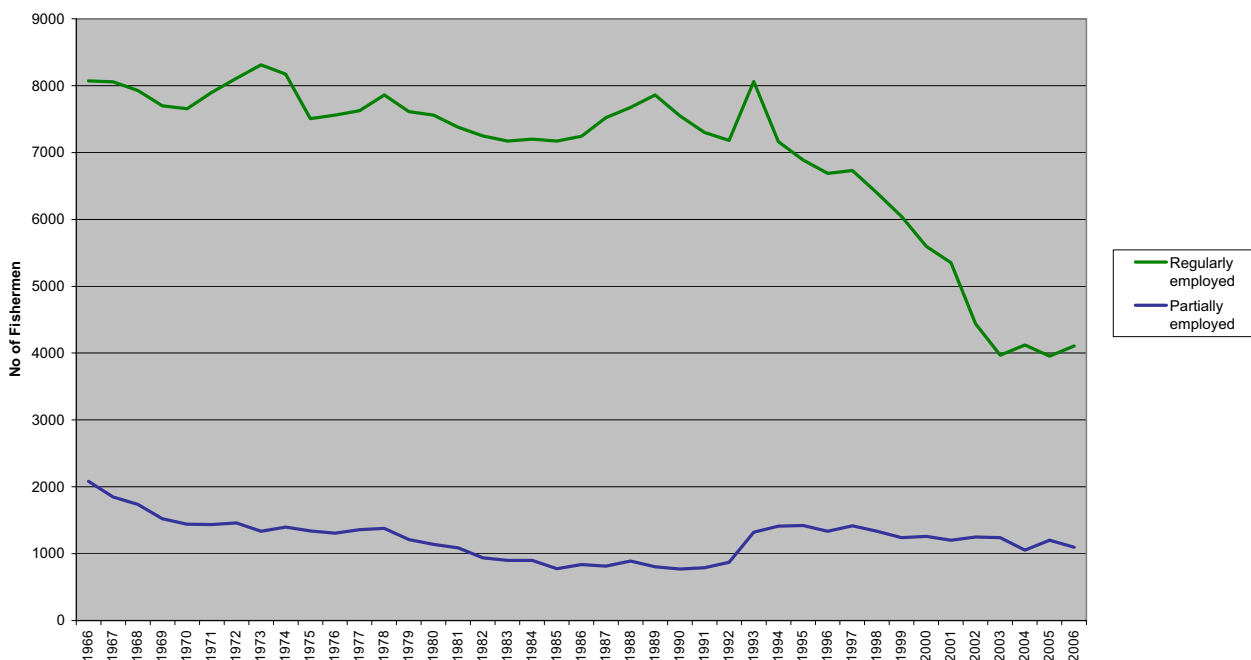
Table 13. Number of fishermen employed on Scottish based vessels, 2002 to 2006

	2002	2003	2004	2005 (r)	2006
Regularly employed	4,369	3,968	4,124	3,952	4,109
Irregularly employed	1,233	1,238	1,052	1,110	999
Crofters	105	70	99	93	97
Total	5,707	5,276	5,275	5,155	5,205

Table 14. Number of fishermen employed by district and employment status, 2006

	Regularly employed	Irregularly employed	Crofters	Total
Eyemouth	157	19	-	176
Pittenweem	101	35	-	136
Aberdeen	118	44	-	162
Peterhead	412	45	-	457
Fraserburgh	614	149	-	763
Buckie	230	25	-	255
Wick	165	0	-	165
Orkney	288	54	-	342
Shetland	315	156	-	471
Stornoway	299	152	35	486
Lochinver	28	0	8	36
Kinlochbervie	36	0	5	41
Ullapool	75	9	-	84
Mallaig	153	14	1	168
Oban	175	60	14	249
Campbeltown	292	35	-	327
Ayr	507	136	-	643
Portree	144	66	34	244
All districts	4,109	999	97	5,205

Chart 5 Number of fishermen employed on Scottish based vessels, 1966 to 2006

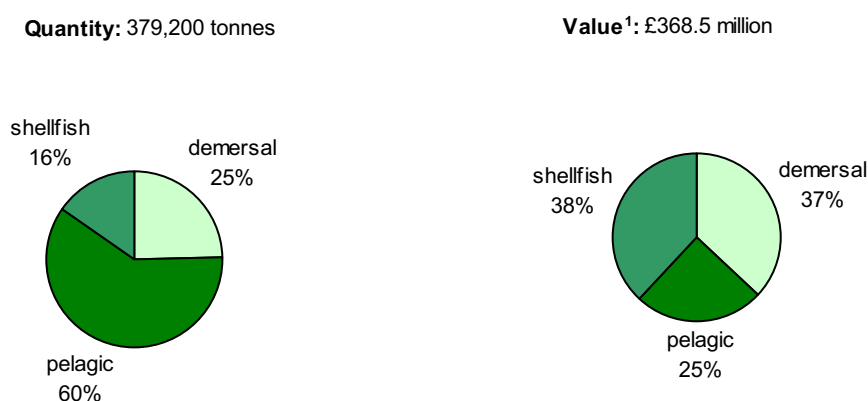


2. Overview of Catches and Landings

2.1 Landings by Scottish based vessels

Scottish based vessels made 80 thousand voyages in 2006, a 17 per cent increase on the number in 2005 (Table 18). Some of this increase reflects additional activity of under 10 metre vessels identified as a result of the introduction of the Register of Buyers and Sellers for shellfish landings from early 2006. The value of landings increased by three per cent in real terms to £370 million despite the live weight landed dropping by 100 thousand tonnes (21 per cent) to 380,000 tonnes. The value of shellfish landings increased by 22 per cent in real terms to £140 million in 2006 with the volume of landings in this sector increasing by seven per cent to 59 thousand tonnes. High value shellfish landings formed 16 per cent of the total by weight but 38 per cent by value (Chart 1), making shellfish the most valuable sector to the Scottish fleet for the first time (Chart 11). The value of demersal landings increased by eight percent in real terms to £136 million despite the volume of landings decreasing by six per cent to 94 thousand tonnes. The 2006 pelagic landings have been affected by the repayment arrangements agreed with the Commission for historic undeclared landings of herring and mackerel. Repayment started in 2006 and covered some undeclared landings in 2005 and 2006. The volume of pelagic species landed decreased by 31 per cent to 226 thousand tonnes. Although prices per tonne landed increased, the value landed decreased by 19 per cent to £92 million. Pelagic landings made up 22 per cent in real terms of the total value and 60 per cent of the total volume. The proportion of the value of the annual catch of the Scottish based fleet landed into Scotland remained stable at around 83 per cent (calculated from table 18).

Chart 1: Total landings by Scottish based vessels by species type, 2006



Looking at the longer term trends, although the value of demersal landings increased in 2006 to reach £136 million, the 2006 figure is still 10 per cent lower in real terms compared with 2002. Over the same period, the value of pelagic landings (at 2006 prices) has

¹ When the Register of Buyers and Sellers (RBS) was introduced in September 2005, Sales Notes were not initially required for sales of Shellfish and information on the value of such landings is consequently missing. The value has therefore been estimated for a number of landings, mostly of shellfish, relating to voyages starting on or after 1st September 2005.

decreased by 6 per cent from £108 million in 2002 to £92 million in 2006. The value of shellfish landings has increased by 35 per cent in real terms since 2002 to reach £140 million.

The total quantity of fish landed by Scottish vessels has fallen by 15 per cent since 2002 (calculated from Tables 17 and 27) affecting the demersal sector most (down by 39 thousand tonnes or 29 per cent). Pelagic landings by Scottish based vessels into UK ports have decreased compared with 2002 by 9 thousand tonnes to 141 thousand tonnes while pelagic landings abroad have decreased by 26 thousand tonnes, resulting in an overall decrease of 35 thousand tonnes, or 14 per cent. The quantity of shellfish landed in 2006 was 14 per cent higher than in 2002.

2.2 Total landings into Scotland

The quantity and value of all landings into each Scottish Fishery Office district are shown in Figures 1 and 2, respectively.

In 2006, the total value of fish landed into Scottish ports by vessels of all nationalities was £390 million, representing a three per cent increase over the value of landings in 2005, at 2006 prices. The increase in value compared with 2002 (at 2006 prices) is 12 per cent. In 2006, the total quantity landed into Scottish ports by vessels of all nationalities was 385 thousand tonnes, 13 per cent lower than in 2005, but two per cent higher than in 2002 (Table 17). The 2006 pelagic landings have been affected by the repayment arrangements agreed with the Commission for historic undeclared landings of herring and mackerel. Repayment started in 2006 and covered some undeclared landings in 2005 and 2006. There has been a substantial switch in the contribution of the demersal and pelagic sectors since 2002, with demersal species declining from 43 per cent to 30 per cent of landed volume, while pelagic species have increased from 44 per cent to 55 per cent (calculated from Table 17). Since 2002 the quota for key demersal ² and key pelagic ³ stocks has decreased by 20 and 27 per cent respectively.

Table II: Combined UK quota ('000 tonnes) for key demersal and pelagic stocks 2001-2005 (based on Table 15)

Quota ('000 tonnes)	2002	2003	2004	2005	2006	Change 2002 - 2006
Combined key demersal stocks	186	128	141	142	149	-37 (-20%)
Combined key pelagic stocks	282	276	277	251	206	-75 (-27%)

² Key demersal stocks are considered to be North Sea & West of Scotland stocks of Cod, Haddock, Monkfish, Whiting, Saithe, Plaice and Norway Lobster.

³ Key pelagic stocks are considered to be North Sea & West of Scotland stocks of Mackerel, Herring and Horse Mackerel.

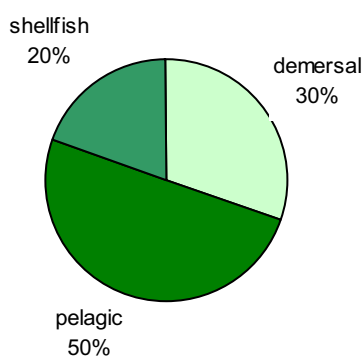
2.3 Landings by UK vessels into Scotland by area and district

In 2006, UK vessels landed 290 thousand tonnes of all species, at a value of £320 million, into Scottish ports. These landings represent an increase of 2 per cent in value from 2005 (at 2006 prices) but a decrease of 21 per cent in quantity (Table 17). This decrease in quantity landed is mainly due to the decrease in pelagic landings. The value of landings at 2006 prices by UK vessels into Scotland has increased by 13 per cent since 2002.

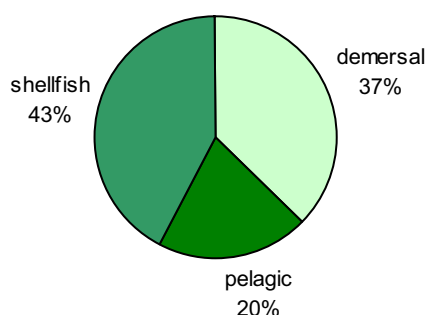
The species combination of these landings was broadly similar to that of landings by Scottish based vessels (Chart I), although pelagic vessels formed a smaller proportion of the UK landings into Scotland total (Chart II) as Scottish vessels landed 85 thousand pelagic tonnes abroad (Table 17).

Chart II: Landings⁴ by UK vessels into Scotland, 2006

Quantity: total 289,200 tonnes



Value⁴: total £323.7 million



Regional breakdown

Eastern Area: Eyemouth, Pittenweem, Aberdeen, Peterhead, Fraserburgh, Buckie
(Comparisons calculated from table 21)

- In 2005, the value of landings by UK vessels into the six eastern districts increased by four per cent to £168 million despite the volume of landings decreasing by 19 per cent to 158,000 tonnes.
- Only Aberdeen and Buckie experienced decreases in the value of landings in 2006.

⁴ When the Register of Buyers and Sellers (RBS) was introduced in September 2005, Sales Notes were not initially required for sales of Shellfish and information on the value of such landings is consequently missing. The value has therefore been estimated for a number of landings, mostly of shellfish, relating to voyages starting on or after 1st September 2005.

Northern Area: Wick, Orkney, Shetland, Stornoway, Kinlochbervie, Lochinver

- The value of pelagic landings into Shetland decreased by 37 per cent to £26 million causing an overall decrease of £7 million in the total value of all landings into Shetland.
- The value of landings into Stornoway increased by £4 million between 2005 and 2006 due to the increase in the value of shellfish landed. The value of landings into other ports in the Northern area in 2006 were very similar to the values in 2005.

Western Area: Ullapool, Mallaig, Portree, Oban, Campbeltown, Ayr

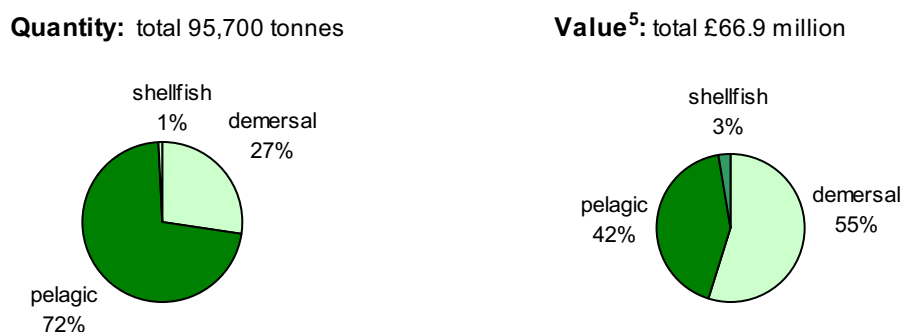
- The value of landings into the Western area increased by 25 per cent while the volume increased by 2 per cent. This increase in the value of landings is largely a result of the higher prices obtained for shellfish.
- The improved shellfish prices meant that the value of landings increased in all districts in the Western area.

2.4 Landings by foreign vessels into Scotland

Foreign vessels landed 96 thousand tonnes of fish worth £67 million into Scottish ports in 2006, a 28 per cent increase in quantity and a six per cent increase in value from 2005 (at 2006 prices). The proportion of total tonnage landed by foreign vessels increased from 17 per cent in 2005 to 25 per cent in 2006 (Table 17). This increase in the proportion of quantity landed by foreign vessels reflects an increase of 25 thousand tonnes of pelagic species landed by foreign vessels and a decrease of 73 thousand tonnes in pelagic landings by UK vessels.

In 2006 the species types landed by foreign vessel was different to recent years, due to an increase in the volume and value of pelagic landings into Scotland, with pelagic forming 72 per cent by volume and 42 per cent by value (Chart III). Most of the remainder comprised demersal species, with negligible landings of shellfish of just 693 tonnes in 2006 (Table 24).

Chart III: Foreign landings⁵ into Scotland by species type, 2006



⁵ When the Register of Buyers and Sellers (RBS) was introduced in September 2005, Sales Notes were not initially required for sales of Shellfish and information on the value of such landings is consequently missing. The value has therefore been estimated for a number of landings, mostly of shellfish, relating to voyages starting on or after 1st September 2005.

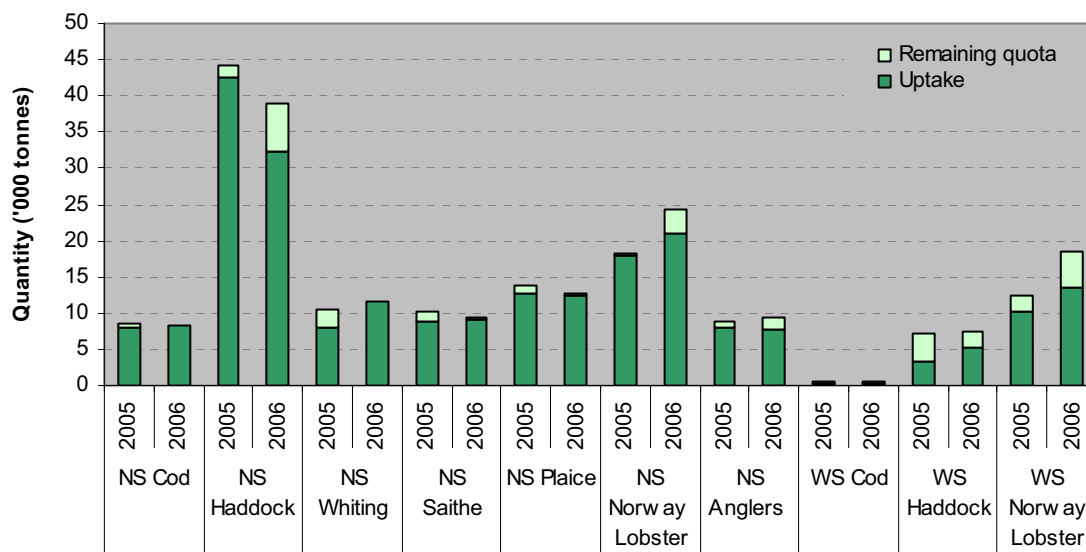
2.5 Uptake of UK quota

2.5.1 Demersal stocks

Quota uptake reached 90 per cent or more for four of the ten most valuable demersal stocks (NS Cod, NS Saithe, NS Plaice, and NS Whiting; Chart IV, Table 15). Uptake of these key quota stocks in 2006 was broadly similar to that in 2005, with some notable exceptions:

- Uptake of NS Whiting increased from 77 to 98 per cent as landings increased by 42 per cent while quota increased by 11 per cent.
- Uptake of NS Haddock decreased from 96 to 83 per cent despite quota decreasing by 11 per cent.
- Uptake of NS Nephrops fell from 100 to 86 per cent, mainly because an increase in quota of 35 per cent resulted in landings increasing by only 16 per cent.
- Uptake of WS Nephrops fell from 83 to 74 per cent, mainly because an increase in quota of 49 per cent resulted in landings increasing by only 33 per cent.

Chart IV: Quota uptake of main North Sea (NS) and West of Scotland (WS) demersal stocks by UK vessels in 2004 and 2005



2.5.2 Pelagic stocks

Quota uptake for the four most important pelagic stocks continued to be high in 2006, approaching 100 per cent for NS Herring, WS Herring and WS Mackerel and exceeding 90 per cent for WS Horse Mackerel. This was in spite of large differences in quota from 2005:

- NS Herring quota decreased by 27 per cent due to payback arrangements, landings correspondingly decreased by 27 per cent.
- WS Mackerel quota decreased by 20 per cent due to payback arrangements; landings correspondingly decreased by 20 per cent.
- WS Horse Mackerel quota increased by 68 per cent and landings correspondingly increased by 70 per cent.

Chart V: Quota uptake of main North Sea (NS) and West of Scotland (WS) pelagic stocks by UK vessels in 2004 and 2005

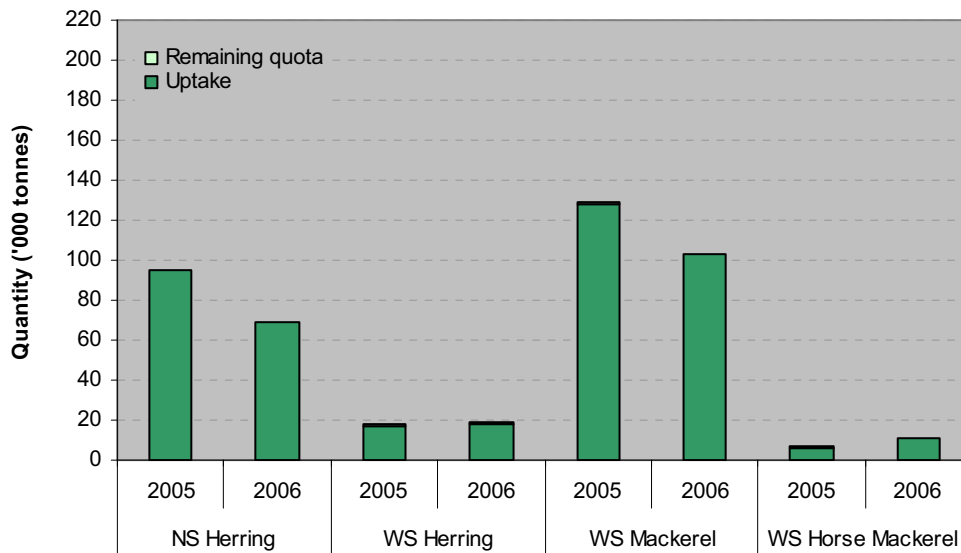


Figure 1: Volume (live weight tonnes) landed by district, 2006

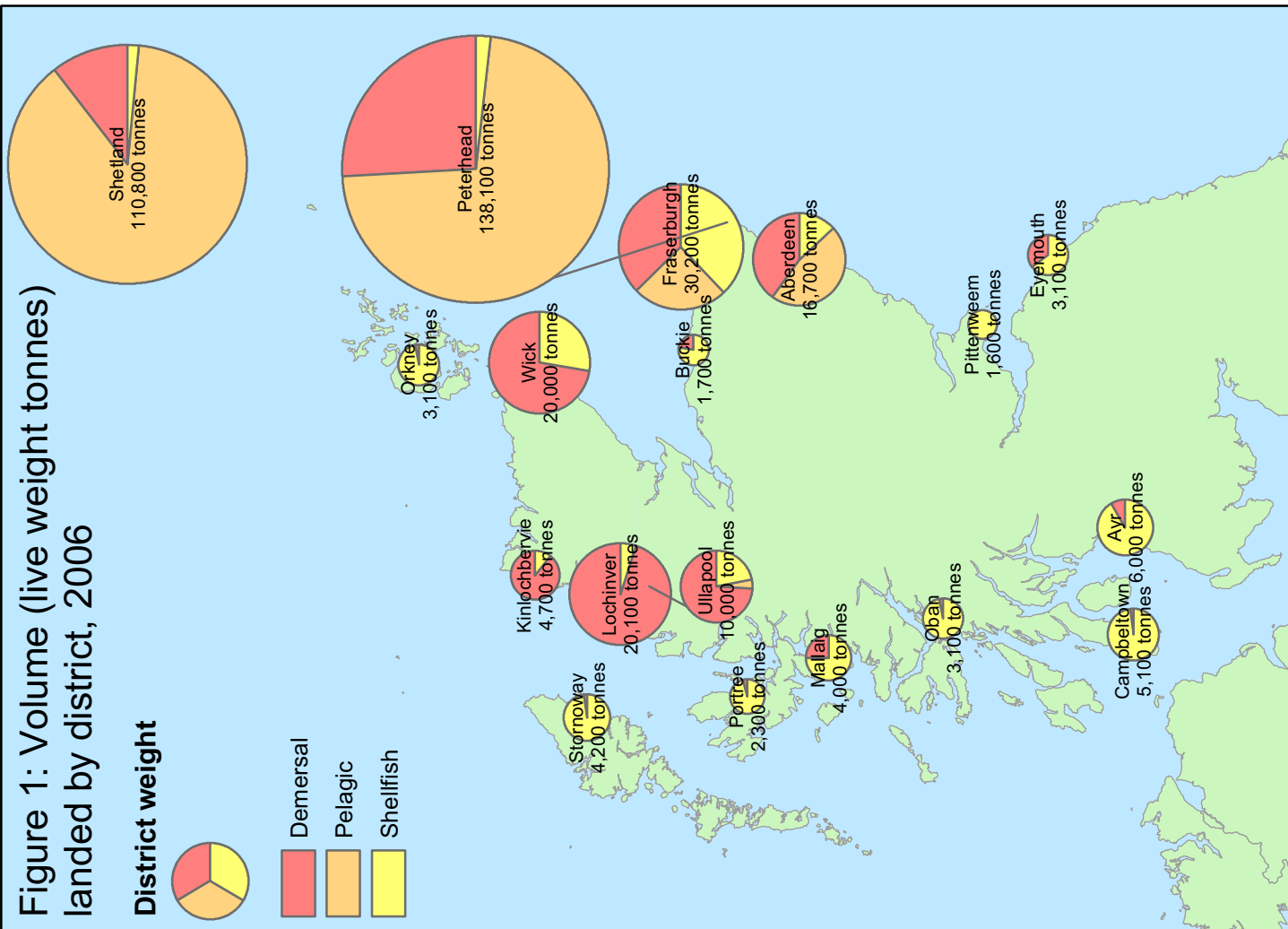


Figure 2: Value (£) landed by district, 2006

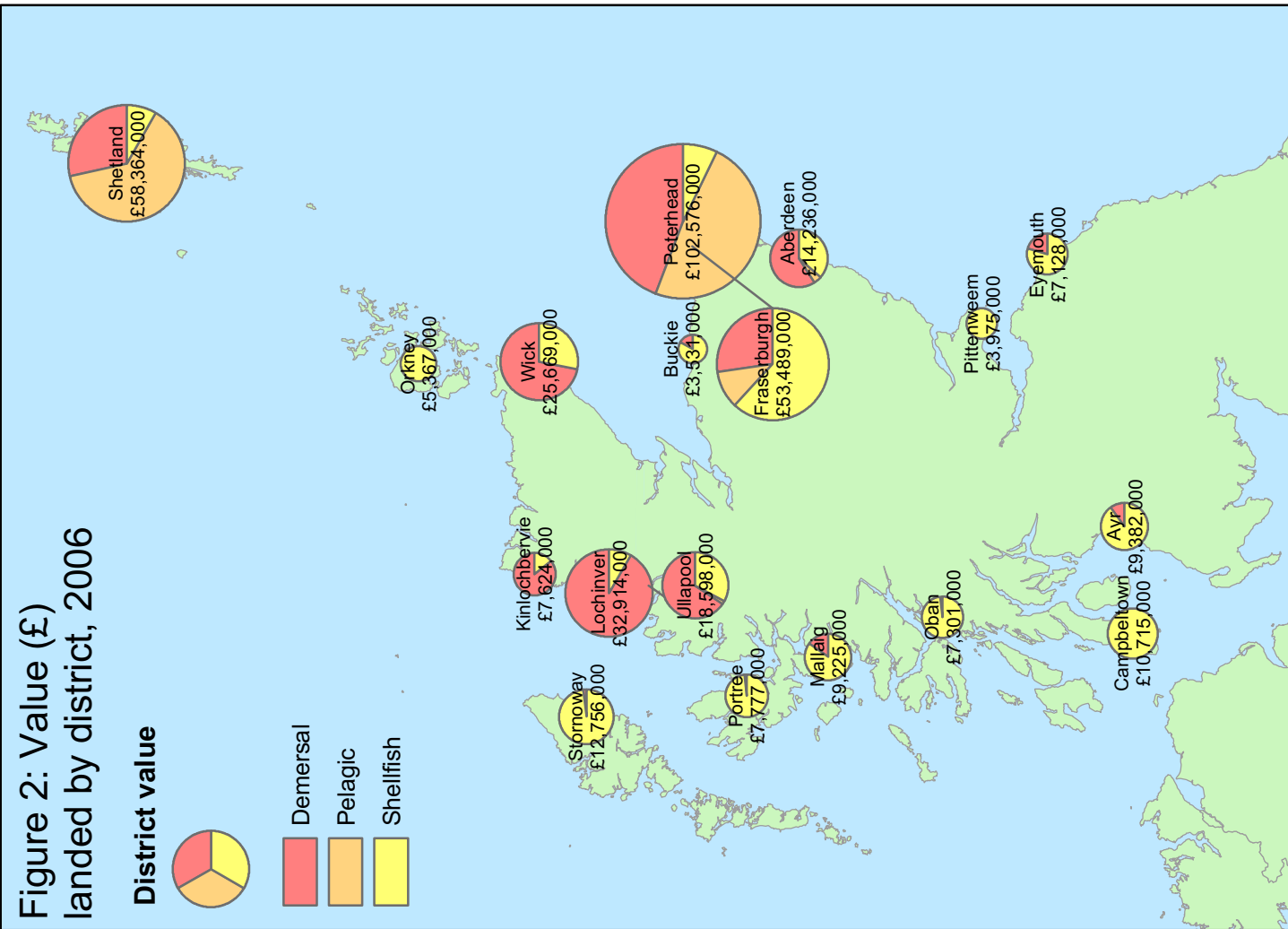


Table 15. Total Allowable Catches, UK quotas, and liveweight landed by UK vessels, 2002 to 2006

Area	Species	Sea area	Year	EU total	UK quota		UK uptake	
				allowable catch	After exchanges	% of TAC	Tonnes	% of quota
North sea	Cod	IIa (EU),IV	2002	41,620	20,377	49.0	18,522	90.9
			2003	22,659	10,696	47.2	10,062	94.1
			2004	22,659	9,507	42.0	8,534	89.8
			2005	22,659	8,674	38.3	7,953	91.7
			2006	19,260	8,357	43.4	8,342	99.8
			2006	17,935	59,805	76.7	43,234	72.3
	Haddock	IIa (EU),IV	2002	39,521	33,257	84.2	33,099	99.5
			2003	65,467	49,537	75.7	40,495	81.7
			2004	51,321	44,123	86.0	42,422	96.1
			2005	44,546	39,053	87.7	32,378	82.9
			2006	32,358	19,608	60.6	9,060	46.2
			2006	12,294	7,257	59.0	6,417	88.4
	Whiting	IIa (EU),IV	2002	12,294	6,784	55.2	6,267	92.4
			2003	19,800	10,544	53.3	8,110	76.9
			2004	17,370	11,733	67.5	11,482	97.9
			2005	66,150	10,718	16.2	9,267	86.5
			2006	79,200	13,463	17.0	7,078	52.6
			2006	91,200	14,654	16.1	6,397	43.7
	Saithe	IIa,III(EU),IV	2002	69,600	10,239	14.7	8,766	85.6
			2003	59,160	9,379	15.9	9,229	98.4
			2004	73,110	19,063	26.1	16,708	87.6
			2005	69,282	18,313	26.4	13,890	75.8
			2006	57,923	15,004	25.9	15,253	101.7
			2006	57,370	13,932	24.3	12,707	91.2
	Plaice	IIa (EU),IV	2002	55,820	12,651	22.7	12,429	98.2
			2003	16,000	800	5.0	693	86.6
			2004	15,850	827	5.2	759	91.8
			2005	17,000	869	5.1	889	102.3
			2006	18,320	1,127	6.2	945	83.9
			2006	17,470	1,256	7.2	910	72.5
	Sole	II,IV	2002	946	224	23.7	157	70.1
			2003	1,053	175	16.6	131	74.9
			2004	1,373	233	17.0	213	91.4
			2005	1,496	262	17.5	251	95.8
			2006	1,541	326	21.2	320	98.2
			2006	16,623	13,885	83.5	12,909	93.0
	Nephrops	IIa(EU),IV(EU)	2002	16,623	14,005	84.3	12,374	88.4
			2003	18,987	16,047	84.5	15,145	94.4
			2004	21,350	18,101	84.8	18,079	99.9
			2005	24,380	24,432	100.2	21,003	86.0
			2006	11,000	3,875	35.2	1,928	49.8
			2006	11,000	3,775	34.3	1,881	49.8
	Nephrops	IV(Norway)	2002	11,000	4,045	36.8	1,586	39.2
			2003	7,000	2,488	35.5	1,006	40.4
			2004	7,000	2,581	36.9	1,234	47.8
			2005	10,500	9,205	87.7	8,534	92.7
2006			7,000	6,245	89.2	6,060	97.0	
2006			7,000	6,157	88.0	6,048	98.2	
Anglers	IIa(EU),IV(EU)	2002	10,314	8,950	86.8	8,059	90.0	
		2003	10,314	9,509	92.2	7,845	82.5	
		2004	2,700	2,584	95.7	1,676	64.9	
		2005	2,700	2,589	95.9	1,232	47.6	
		2006	1,890	1,814	96.0	1,114	61.4	
		2006	1,740	1,677	96.4	1,197	71.4	
Megrim	IIa(EU),IV(EU)	2002	1,740	1,655	95.1	1,326	80.1	
		2003	9,720	5,937	61.1	2,317	39.0	
		2004	8,262	5,039	61.0	2,045	40.6	
		2005	7,023	4,089	58.2	1,634	40.0	
		2006	6,500	3,825	58.8	1,885	49.3	
		2006	6,175	3,431	55.6	1,794	52.3	
Skate & rays	IIa(EU),IV(EU)	2002	4,848	3,136	64.7	1,357	43.3	
		2003	4,121	2,655	64.4	1,270	47.8	
		2004	3,503	2,266	64.7	1,115	49.2	
		2005	3,220	2,080	64.6	825	39.7	
		2006	2,737	1,695	61.9	726	42.8	
		2006	27,060	2,331	8.6	1,256	53.9	
Dabs & flounder	IIa(EU),IV(EU)	2002	23,001	2,144	9.3	1,301	60.7	
		2003	19,551	1,684	8.6	1,197	71.1	
		2004	18,000	1,830	10.2	1,606	87.8	
		2005	17,100	2,218	13.0	1,629	73.4	
		2006	6,750	1,042	15.4	631	60.6	
		2006	5,738	886	15.4	514	58.0	
Turbot & brill	IIa(EU),IV(EU)	2002	4,877	732	15.0	605	82.7	
		2003	4,550	672	14.8	579	86.2	
		2004	4,323	551	12.7	523	94.9	
		2005	7,100	5,745	80.9	1,013	17.6	
		2006	5,640	4,413	78.2	1,177	26.7	
		2006	4,472	3,595	80.4	1,052	29.3	
Spurdog	IIa(EU),IV(EU)	2002	1,136	925	81.4	489	52.9	
		2003	691	778	112.6	207	26.6	
		2004	4,880	1,074	22.0	68	6.3	
		2005	4,880	1,060	21.7	-	-	
		2006	4,880	1,074	22.0	-	-	
		2006	4,980	1,096	22.0	-	-	
Herring	IVa,b	2002	146,327	38,101	26.0	38,094	100.0	
		2003	224,458	56,818	25.3	56,781	99.9	
		2004	260,502	65,220	25.0	64,331	98.6	
		2005	305,557	94,941	31.1	94,648	99.7	
		2006	272,851	69,011	25.3	68,915	99.9	

Area	Species	Sea area	Year	EU total	UK quota		UK uptake	
				allowable catch	After exchanges	% of TAC	Tonnes	% of quota
North sea	Herring	IVc,VIIId	2002	42,673	4,094	9.6	3,877	94.7
			2003	59,542	4,595	7.7	3,961	86.2
			2004	66,098	4,481	6.8	4,501	100.4
			2005	74,293	6,082	8.2	5,861	96.4
			2006	50,023	5,246	10.5	5,221	99.5
			2006	25,798	1,478	5.7	1,436	97.2
	Mackerel	IIa (EU),III(EU), IV	2002	22,063	1,611	7.3	866	53.8
			2003	21,381	1,707	8.0	1,579	92.5
			2004	17,067	609	3.6	612	100.5
			2005	17,621	414	2.3	502	121.3
			2006	49,400	5,230	10.6	1,446	27.6
			2006	41,667	5,124	12.3	1,192	23.3
	Horse mackerel	IIa(EU),IV(EU)	2002	46,788	6,219	13.3	2,554	41.1
			2003	40,616	2,366	5.8	1,800	76.1
			2004	40,957	3,917	9.6	2,168	55.3
			2005	na	na	na	na	na
			2006	na	na	na	na	na
			2006	na	na	na	na	na
	Blue whiting	I-VIII, XII, XIV	2002	344,063	80,179	23.3	79,577	99.2
			2003	863,000	17,474	2.0	2,442	14.0
			2004	863,000	17,055	2.0	115	0.7
			2005	771,200	15,901	2.1	29	0.2
			2006	655,960	13,525	2.1	-	-
			2006	-	-	-	-	-
	Sandeel	IIa(EU),IV(EU)	2002	150,000	-	-	-	-
			2003	131,000	-	-	-	-
			2004	131,000	6,550	5.0	-	-
			2005	10,000	500	5.0	-	-
			2006	-	-	-	-	-
			2006	-	-	-	-	-
	Sandeel	IV (Norway)	2002	50,000	2,500	5.0	-	-
			2003	50,000	2,500	5.0	-	-
			2004	19,000	2,500	13.2	-	-
			2005	19,000	950	5.0	-	-
			2006	19,000	950	5.0	-	-
			2006	220,000	8,348	3.8	1,633	19.6
	Pout & blue whiting	IV (ex EC) (Norway)	2002	240,000	9,111	3.8	1,310	14.4
			2003	238,000	9,035	3.8	1,480	16.4
			2004	250,000	9,493	3.8	1,605	16.9
			2005	263,540	4,944	1.9	543	11.0
			2006	4,600	2,974	64.7	1,789	60.2
			2006	1,808	1,084	60.0	1,025	94.6
	Sprat	IIa(EU),IV(EU)	2002	848	508	59.9	506	99.6
			2003	721	485	67.3	401	82.7
			2004	613	456	74.4	361	79.2
			2005	14,100	10,996	78.0	7,377	67.1
2006			8,675	6,455	74.4	6,378	98.8	
2006			6,503	5,304	81.6	3,424	64.6	
Haddock	Vb(EU),VI XII(int'l), XIVb(int'l)	2002	8,302	7,081	85.3	3,240	45.8	
		2003	7,810	7,432	95.2	5,381	72.4	
		2004	3,500	2,157	61.6	1,144	53.0	
		2005	2,000	1,285	64.3	805	62.6	
		2006	1,600	1,032	64.5	459	44.5	
		2006	1,600	917	57.3	164	17.9	
Whiting	Vb(EU),VI XII(int'l), XIVb(int'l)	2002	1,360	872	64.1	181	20.8	
		2003	14,000	3,211	22.9	1,918	59.7	
		2004	17,119	3,029	17.7	1,475	48.7	
		2005	19,713	3,488	17.7	1,599	45.8	
		2006	15,044	3,792	25.2	2,009	53.0	
		2006	12,787	4,002	31.3	2,748	68.7	
Saithe	Vb(EU),VI XII(int'l), XIVb(int'l)	2002	1,728	1,050	60.8	342	32.6	
		2003	1,534	920	60.0	255	27.7	
		2004	1,227	746	60.8	135	18.1	
		2005	982	597	60.8	59	9.9	
		2006	786	477	60.7	45	9.4	
		2006	125	25	20.0	6	24.0	
Plaice	Vb(EU),VI XII(int'l), XIVb(int'l)	2002	106	21	19.8	7	33.3	
		2003	85	17	20.0	4	23.5	
		2004	68	14	20.6	2	13.6	
		2005	68	14	20.6	2	11.4	
		2006	4,770	1,572	33.0	1,550	98.6	
		2006	3,180	1,086	34.2	1,074	98.9	
Sole	Vb(EU),VI XII(int'l), XIVb(int'l)	2002	3,180	1,220	38.4	1,237	101.4	
		2003	4,686	1,865	39.8	1,650	88.5	
		2004	4,686	1,819				

Table 15. continued

Area	Species	Sea area	Year	EU total allowable catch	UK quota After exchanges	% of TAC	UK uptake Tonnes	% of quota	
West of Scotland	Herring	Vb(EU), VIa(N), Vlb	2002	35,700	21,571	60.4	20,926	97.0	
			2003	29,340	17,728	60.4	17,116	96.5	
			2004	29,340	17,776	60.6	17,723	99.7	
			2005	29,440	17,788	60.4	17,439	98.0	
			2006	33,340	18,809	56.4	18,326	97.4	
	Mackerel	II(excl EU,Ice), Vb(EU),VI,VII, VIII(excl c), XII(intl), XIVb(intl)	2002	345,012	202,139	58.6	199,237	98.6	
			2003	310,808	187,596	60.4	182,161	97.1	
			2004	297,595	175,164	58.9	173,129	98.8	
			2005	217,477	128,690	59.2	127,929	99.4	
			2006	225,837	103,168	45.7	102,537	99.4	
			2006	1,000	1,000	100.0	46	4.6	
	Herring	VIa(Clyde)	2002	1,000	1,000	100.0	328	32.8	
			2003	1,000	1,000	100.0	30	3.0	
			2004	1,000	1,000	100.0	333	33.4	
			2005	1,000	996	99.6	470	47.0	
			2006	800	800	100.0	na	na	
	Horse mackerel	Vb(EU),VI,VII, VIII(excl c), XII(intl), XIVb(intl)	2002	143,000	13,040	9.1	10,887	83.5	
			2003	130,000	7,555	5.8	7,095	93.9	
			2004	131,879	10,427	7.9	9,680	92.8	
			2005	133,223	6,598	5.0	6,178	93.6	
			2006	135,257	11,101	8.2	10,507	94.6	
	Blue whiting (inc Biscay)	Vb(EU),VI,VII, VIII(excl c), XII(intl), XIVb(intl)	2002	121,845	31,548	25.9	28,874	91.5	
			2003	121,935	29,018	23.8	19,265	66.4	
			2004	209,653	105,130	50.1	59,798	56.9	
			2005	539,006	109,815	20.4	109,102	99.4	
			2006	na	na	-	na	-	
	Hake	Vb(EU),VI,VII, XII(intl), XIVb(intl)	2002	15,118	2,685	17.8	2,386	88.9	
			2003	16,823	3,011	17.9	2,401	79.7	
			2004	21,926	3,318	15.1	2,619	78.9	
			2005	23,888	3,896	16.3	3,046	78.2	
			2006	24,617	3,850	15.6	3,086	80.2	
	Area VII	Cod	VIIa	2002	3,200	1,377	43.0	1,166	84.7
				2003	1,950	612	31.4	532	86.9
				2004	2,150	846	39.3	662	78.3
				2005	2,150	819	38.1	599	73.1
				2006	1,828	1,028	56.2	592	57.6
2006				8,700	802	9.2	760	94.8	
Cod		VII(excl a),VIII IX,X	2002	6,700	547	8.2	482	88.1	
			2003	5,700	490	8.6	398	81.2	
			2004	6,200	532	8.6	491	92.3	
			2005	5,580	689	12.3	646	93.8	
			2006	9,300	1,436	15.4	910	63.4	
			2006	8,185	789	9.6	672	85.2	
Haddock		VII,VIII, IX,X	2002	9,600	847	8.8	743	87.7	
			2003	11,520	1,189	10.3	642	54.0	
			2004	11,520	1,154	10.0	696	60.3	
			2005	1,000	443	44.3	312	70.4	
			2006	500	192	38.4	162	84.4	
Whiting		VIIa	2002	514	199	38.7	86	43.2	
			2003	514	199	38.7	47	23.6	
			2004	437	189	43.2	23	11.9	
			2002	31,700	3,402	10.7	971	28.5	
			2003	31,700	3,302	10.4	879	26.6	
Whiting		VII(excl a)	2004	27,000	2,823	10.5	689	24.4	
			2005	21,600	2,485	11.5	566	22.8	
			2006	19,940	2,289	11.5	484	21.2	
			2002	8,710	1,340	15.4	296	22.1	
			2003	8,710	1,337	15.4	364	27.2	
			2004	6,968	1,069	15.3	343	32.1	
Saithe		VII,VIII, IX,X	2005	5,574	855	15.3	210	24.6	
			2006	4,738	726	15.3	120	16.5	
			2002	2,400	1,223	51.0	577	47.2	
			2003	1,675	478	28.5	419	87.7	
			2004	1,340	464	34.6	372	80.2	
			2005	1,608	590	36.7	422	71.5	
Plaice		VIIa	2006	1,608	707	44.0	412	58.2	
			2002	6,690	1,856	27.7	1,807	97.4	
			2003	5,970	1,790	30.0	1,733	96.8	
			2004	6,060	1,762	29.1	1,482	84.1	
			2005	5,151	1,477	28.7	1,290	87.3	
			2006	5,151	1,644	31.9	1,503	91.4	
Plaice		VIIde	2002	680	119	17.5	105	88.2	
			2003	660	155	23.5	127	81.9	
			2004	560	110	19.6	87	79.1	
			2005	476	69	14.5	55	79.7	
			2006	476	119	25.0	87	73.0	
			2002	970	146	15.1	60	41.1	
Plaice		VIIhjk	2003	582	170	29.2	57	33.5	
			2004	466	72	15.5	36	50.0	
			2005	466	58	12.4	28	48.3	
			2006	396	50	12.6	19	37.0	
			2002	1,100	242	22.0	168	69.4	
			2003	1,010	238	23.6	220	92.4	
Sole		VIIa	2004	800	188	23.5	107	56.9	
			2005	960	146	15.2	103	70.5	
			2006	960	226	23.5	70	31.2	
			2002	5,200	1,096	21.1	976	89.1	
			2003	5,400	1,147	21.2	1,113	97.0	
			2004	5,900	1,170	19.8	1,102	94.2	
Sole		VII d	2005	5,700	1,170	20.5	558	47.7	
			2006	5,720	1,215	21.2	669	55.1	
			2002	525	288	54.9	290	100.7	
			2003	394	235	59.6	235	100.0	
			2004	300	179	59.7	172	96.1	
			2005	865	511	59.1	506	99.0	
2006		940	566	60.2	565	99.8			

Area	Species	Sea area	Year	EU total allowable catch	UK quota After exchanges	% of TAC	UK uptake Tonnes	% of quota		
Area VII	Sole	VIIfg	2002	1,070	319	29.8	318	99.7		
			2003	1,240	350	28.2	342	97.7		
			2004	1,050	293	27.9	283	96.6		
			2005	1,000	251	25.1	217	86.5		
			2006	950	274	28.8	232	84.6		
			Sole	VIIhjk	2002	650	141	21.7	125	88.7
					2003	390	80	20.5	78	97.8
					2004	390	80	20.5	79	99.0
					2005	650	141	21.7	112	79.4
					2006	650	168	25.8	86	51.4
					2006	17,790	5,526	31.1	5,111	92.5
			Nephrops	VII	2003	17,790	5,796	32.6	4,782	82.5
	2004	17,450			5,709	32.7	5,174	90.6		
	2005	19,544			6,507	33.3	5,546	85.2		
	2006	21,498			7,925	36.9	6,609	83.4		
	2002	18,600			3,876	20.8	3,540	91.3		
	2003	15,810			3,651	23.1	3,485	95.5		
	Anglers	VII	2004	20,902	4,074	19.5	3,722	91.4		
			2005	25,082	5,047	20.1	4,074	80.7		
			2006	26,456	4,907	18.5	4,021	81.9		
			2002	13,350	2,124	15.9	1,830	86.2		
			2003	14,336	2,265	15.8	1,818	80.3		
			2004	18,099	2,772	15.3	1,705	61.5		
	Megrin	VII	2005	19,263	3,039	15.8	1,868	61.5		
			2006	18,300	2,918	15.9	1,636	56.1		
			2002	17,000	2,934	17.3	1,961	66.8		
			2003	17,000	2,961	17.4	1,750	59.1		
			2004	17,000	2,964	17.4	1,650	55.7		
			2005	17,000	2,964	17.4	1,622	54.7		
	Pollack (Lythe)	VII	2006	15,300	2,658	17.4	1,488	56.0		
			2002	4,800	3,525	73.4	2,473	70.2		
			2003	4,800	3,550	74.0	2,736	77.1		
			2004	4,800	2,674	55.7	2,482	92.8		
			2005	4,800	3,640	75.8	3,522	96.8		
			2006	4,800	4,238	88.3	3,822	90.2		
	Herring	VIIa	2002	1,000	500	50.0	167	33.4		
2003			1,000	500	50.0	335	67.0			
2004			1,000	500	50.0	246	49.2			
2005			1,000	467	46.7	264	56.5			
2006			1,000	488	48.8	265	54.3			
2002			8,000	10	0.1	9	90.0			
Herring	VIIhjk	2003	13,000	16	0.1	14	87.5			
		2004	13,000	18	0.1	1	5.6			
		2005	13,000	18	0.1	1	5.6			
		2006	11,050	16	0.1	5	31.3			
		2002	12,000	6,300	52.5	1,196	19.0			
		2003	9,600	5,040	52.5	1,368	27.1			
Sprat	VIIde	2004	9,600	5,040	52.5	836	16.6			
		2005	7,680	4,032	52.5	1,635	40.6			
		2006	6,144	3,226	52.5	1,974	61.2			
		2002	16,355	7,699	47.1	7,629	99.1			
		2003	16,353	7,688	47.0	7,470	97.2			
		2004	20,120	7,824	38.9	7,523	96.2			
Norway	Cod	I, II (Norway)	2005	19,499	9,140	46.9	8,400	91.9		
			2006	18,920	8,662	45.8	8,053	93.0		
			2002	1,850	1,041	56.3	629	60.4		
			2003	2,200	1,198	54.5	667	55.7		
			2004	2,200	897	40.8	810	90.3		
			2005	2,260	1,485	65.7	1,164	78.4		
	Haddock	I, II (Norway)	2006	2,760	1,405	50.9	1,126	80.1		
			2002	3,240	294	9.1	257	87.4		
			2003	3,600	252	7.0	230	91.3		
			2004	3,600	701	19.5	513	73.2		
			2005	3,600	666	18.5	587	88.1		
			2006	3,600	427	11.9	431	100.9		
Saithe	I, II (Norway)	2002	3,000	300	10.0	110	36.7			
		2003	1,000	100	10.0	55	55.0			
		2004	1,000	100	10.0	41	41.0			
		2005	1,500	150	10.0	84	56.0			
		2006	1,500	150	10.0	132	88.3			

Table 15. continued

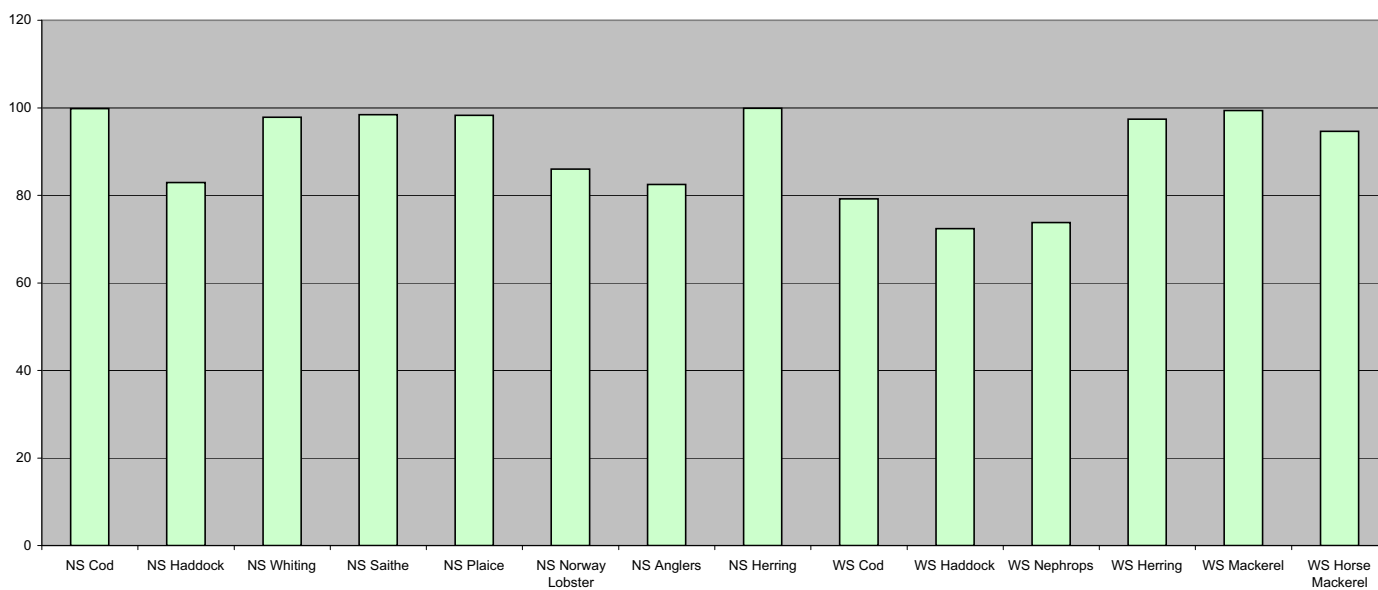
Area	Species	Sea area	Year	EU total allowable catch	UK quota		UK uptake	
					After exchanges	% of TAC	Tonnes	% of quota
Faroes	Cod/haddock	Vb (Faroes)	2002	500	430	86.0	420	97.7
			2003	500	464	92.8	411	88.6
			2004	500	465	93.0	437	94.0
			2005	500	480	96.0	447	93.1
			2006	500	480	96.0	385	80.2
			2002	2,500	630	25.2	549	87.1
	2003	2,500	767	30.7	676	88.1		
	2004	2,500	863	34.5	816	94.6		
	2005	2,500	1,069	42.8	1,010	94.5		
	2006	2,800	1,216	43.4	1,099	90.4		
	2002	7,000	120	1.7	86	71.7		
	2003	6,300	157	2.5	41	26.1		
	2004	6,300	1,867	29.6	140	7.5		
	2005	4,000	854	21.4	106	12.4		
	2006	3,000	232	7.7	66	28.4		
	2002	3,600	250	6.9	219	87.6		
	2003	3,240	244	7.5	192	78.7		
	2004	3,240	444	13.7	284	64.0		
	2005	3,240	334	10.3	302	90.4		
	2006	3,065	245	8.0	151	61.6		
	2002	1,000	680	68.0	187	27.5		
	2003	1,000	680	68.0	201	29.6		
	2004	1,000	680	68.0	111	16.3		
	2005	600	408	68.0	93	22.8		
2006	450	294	65.3	66	22.4			
2002	760	180	23.7	132	73.3			
2003	760	180	23.7	140	77.8			
2004	760	221	29.1	224	101.4			
2005	760	319	42.0	301	94.4			
2006	760	345	45.4	315	91.3			
2002	-	-	-	-	-			
2003	16,000	40	0.3	30	75.0			
2004	16,000	4,040	25.3	807	20.0			
2005	16,000	2,806	17.5	2,805	100.0			
2006	16,000	2,564	16.0	2,564	100.0			

Source : EU Commission

UK figures are as reported to the EC Commission in 2006. This data, however, is still provisional and does not take into account flexibility arrangements, or small adjustments required to UK landings abroad by other member states.

Area	Species	Sea area	Year	EU total allowable catch	UK quota		UK uptake	
					After exchanges	% of TAC	Tonnes	% of quota
Greenland	Redfish	V, XIV (Greenland)	2002	26,500	175	0.7	36	20.6
			2003	25,500	600	2.4	271	45.2
			2004	25,500	338	1.3	338	100.0
			2005	15,938	284	1.8	108	38.0
			2006	13,229	66	0.5	-	-
			2002	5,455	354	6.5	201	56.8
	2003	4,800	714	14.9	634	88.8		
	2004	4,800	1,615	33.6	1,572	97.3		
	2005	6,300	271	4.3	272	100.4		
	2006	6,300	1	0.0	-	-		
	2002	2,000	86	4.3	1	1.2		
	2003	2,000	86	4.3	1	1.2		
2004	2,000	86	4.3	-	-			
2005	1,035	-	-	-	-			
2006	285	-	-	-	-			
Iceland	Redfish	Va (Iceland)	2002	3,000	1,310	43.7	372	28.4
			2003	3,000	1,410	47.0	1,400	99.3
			2004	3,000	1,710	57.0	972	56.8
			2005	3,000	1,625	54.2	1,125	69.2
			2006	1,160	1,160	100.0	400	34.5
NEAFC	Redfish		2002	13,883	171	1.2	4	2.3
			2003	16,452	2	0.0	1	50.0
			2004	16,563	-	-	-	-
			2005	15,513	17	0.1	6	35.3
			2006	9,463	14	0.1	-	-

Chart 6. UK percentage uptake of main quota stocks, 2006



NS: North Sea WS: West of Scotland

Table 16. Fixed quota units (thousands), by sea area and country, 1st January 2007

	North Sea (1)			West of Scotland (2)			Area VII		
	Scottish vessels	Other UK vessels	Held in PO (3) pools	Scottish vessels	Other UK vessels	Held in PO (3) pools	Scottish vessels	Other UK vessels	Held in PO (3) pools
Demersal	1,111	343	953	271	122	210	18	169	76
Pelagic	577	192	30	2,647	901	57	-	26	1
Shellfish	62	15	54	44	13	56	3	36	20
Total	1,749	550	1,037	2,962	1,035	323	21	232	97

(1) includes southern North Sea herring (2) includes western hake (3) Producer Organisations

Table 17. Live weight and value of landings by species type, 2002 to 2006

		Tonnes (thousand)					Value (£ million) (1)					Value (£ million) (2006 prices)				
		2002	2003	2004	2005	2006	2002	2003	2004	2005	2006	2002	2003	2004	2005	2006
Landings by UK vessels into:																
Scotland	Demersal	122.0	93.3	93.2	94.6	88.0	119.3	92.9	96.2	108.3	120.5	132.2	100.1	100.8	111.3	120.5
	Pelagic	143.4	163.3	191.6	217.2	144.0	48.2	48.9	63.2	91.9	65.5	53.4	52.7	66.2	94.4	65.5
	Shellfish	50.8	49.0	52.5	54.5	57.3	92.1	89.6	99.2	108.5	137.7	102.1	96.5	104.0	111.5	137.7
	Total	316.3	305.6	337.2	366.3	289.2	259.6	231.4	258.6	308.7	323.7	287.7	249.2	271.0	317.3	323.7
Rest of UK	Demersal	47.5	40.2	37.8	34.4	31.3	78.5	74.4	66.4	64.3	62.4	87.0	80.1	69.6	66.1	62.4
	Pelagic	22.0	18.4	12.9	21.0	19.9	4.8	4.9	4.8	7.8	8.3	5.3	5.3	5.0	8.0	8.3
	Shellfish	79.9	80.3	73.6	70.0	76.1	71.7	80.9	74.0	75.2	99.4	79.5	87.1	77.6	77.3	99.4
	Total	149.4	139.0	124.3	125.4	127.3	155.0	160.2	145.2	147.3	170.1	171.8	172.5	152.2	151.4	170.1
Landings by foreign vessels into:																
Scotland	Demersal	39.4	37.8	36.3	30.0	25.9	49.8	45.1	44.8	42.3	36.9	55.2	48.6	47.0	43.5	36.9
	Pelagic	22.1	35.1	38.6	44.2	69.1	5.6	6.3	9.1	18.6	28.1	6.2	6.8	9.5	19.1	28.1
	Shellfish	0.0	0.2	0.3	0.5	0.7	0.1	0.3	0.5	0.6	1.9	0.1	0.3	0.5	0.6	1.9
	Total	61.6	73.1	75.2	74.7	95.7	55.5	51.7	54.4	61.6	66.9	61.5	55.7	57.0	63.3	66.9
Rest of UK	Demersal	7.8	30.4	45.4	70.7	30.3	17.0	34.4	53.6	100.8	39.3	18.8	37.1	56.2	103.6	39.3
	Pelagic	1.4	0.6	0.0	0.4	0.6	0.6	0.2	0.0	0.3	0.1	0.7	0.2	0.0	0.3	0.1
	Shellfish	1.5	2.0	1.6	1.3	1.2	2.3	2.9	2.6	1.7	1.7	2.5	3.1	2.7	1.7	1.7
	Total	10.7	32.9	47.0	72.4	32.2	19.8	37.5	56.2	102.7	41.2	21.9	40.4	58.9	105.5	41.2
Landings by UK vessels into UK																
All landings into UK	Demersal	169.5	133.5	131.0	129.0	119.3	197.8	167.3	162.6	172.6	182.9	219.2	180.2	170.4	177.4	182.9
	Pelagic	165.4	181.7	204.5	238.2	163.9	53.0	53.8	68.0	99.7	73.8	58.7	58.0	71.3	102.4	73.8
	Shellfish	130.7	129.3	126.1	124.5	133.4	163.8	170.5	173.2	183.8	237.1	181.5	183.6	181.5	188.9	237.1
	Total	465.6	444.6	461.5	491.7	416.5	414.7	391.6	403.7	456.0	493.8	459.6	421.7	423.1	468.6	493.8
Landings by UK vessels into Scotland as per cent of landings by UK vessels into UK	Demersal	72.0	69.9	71.1	73.3	73.7	60.3	55.5	59.2	62.7	65.9					
	Pelagic	86.7	89.9	93.7	91.2	87.9	90.9	90.8	92.9	92.2	88.7					
	Shellfish	38.9	37.9	41.6	43.8	42.9	56.2	52.6	57.3	59.1	58.1					
	Total	67.9	68.7	73.1	74.5	69.4	62.6	59.1	64.1	67.7	65.5					
Landings into Scotland as per cent of landings into UK	Demersal	74.5	65.0	60.9	54.2	64.9	63.9	55.9	54.0	47.7	60.8					
	Pelagic	87.6	91.3	94.7	92.4	91.2	90.9	91.5	93.8	93.2	91.7					
	Shellfish	38.4	37.4	41.3	43.5	42.8	55.5	51.8	56.6	58.7	58.0					
	Total	70.2	68.8	70.6	69.0	70.7	64.3	58.9	60.8	59.7	64.9					
Scottish based vessels																
- landings into UK	Demersal	117.4	89.2	88.1	88.3	82.9	114.9	91.2	89.7	101.6	115.0	127.3	98.2	94.0	104.4	115.0
	Pelagic	150.3	163.3	191.9	216.9	141.0	49.9	49.2	63.2	91.9	64.5	55.3	53.0	66.2	94.4	64.5
	Shellfish	51.7	50.5	54.1	54.7	58.6	92.5	91.6	101.5	110.0	138.9	102.5	98.7	106.4	113.0	138.9
	Total	319.4	303.1	334.1	359.9	282.5	257.4	232.0	254.4	303.4	318.4	285.3	249.9	266.6	311.8	318.4
- landings abroad	Demersal	15.3	10.4	13.1	11.4	11.2	21.7	18.0	21.7	21.4	21.4	24.0	19.4	22.7	22.0	21.4
	Pelagic	110.8	77.6	79.4	111.2	84.8	47.9	28.6	22.0	22.5	27.1	53.1	30.8	23.1	23.1	27.1
	Shellfish	0.4	0.4	0.8	0.6	0.8	1.3	0.9	2.1	1.8	1.6	1.4	1.0	2.2	1.9	1.6
	Total	126.5	88.4	93.3	123.2	96.8	70.9	47.5	45.9	45.6	50.1	78.6	51.2	48.1	46.9	50.1
Other UK based vessels																
- landings into UK	Demersal	52.1	44.3	42.9	40.6	36.4	82.9	76.1	72.9	71.0	67.9	91.9	81.9	76.4	73.0	67.9
	Pelagic	15.1	18.4	12.6	21.4	22.9	3.1	4.6	4.8	7.8	9.4	3.4	5.0	5.0	8.0	9.4
	Shellfish	79.0	78.8	72.0	69.8	74.8	71.3	78.9	71.7	73.8	98.2	79.0	84.9	75.1	75.8	98.2
	Total	146.3	141.5	127.4	131.8	134.1	157.3	159.6	149.3	152.6	175.5	174.3	171.9	156.5	156.8	175.5
- landings abroad	Demersal	30.7	28.3	28.6	24.6	24.0	35.4	34.4	33.7	35.0	29.5	39.2	37.0	35.3	36.0	29.5
	Pelagic	56.1	62.2	65.4	60.7	73.2	15.5	32.5	19.3	21.2	31.5	17.2	35.0	20.2	21.8	31.5
	Shellfish	5.7	7.9	4.9	7.7	3.8	8.0	14.6	8.6	13.3	5.3	8.9	15.7	9.0	13.7	5.3
	Total	92.5	98.4	98.9	92.9	100.9	58.9	81.5	61.7	69.5	66.4	65.3	87.7	64.7	71.4	66.4
Landings by UK vessels																
Percent landed by Scottish based vessels	Demersal	215.5	172.2	172.7	164.9	154.4	254.9	219.6	218.0	229.0	233.8	282.5	236.5	228.5	235.4	233.8
	Pelagic	332.3	321.5	349.3	410.1	321.9	116.4	115.0	109.3	143.3	132.5	129.0	123.8	114.6	147.3	132.5
	Shellfish	136.8	137.6	131.8	132.8	137.9	173.1	185.9	183.9	198.9	244.0	191.8	200.2	192.7	204.4	244.0
	Total	684.7	631.4	653.7	707.8	614.2	544.5	520.5	511.3	571.2	610.3	603.4	560.6	535.9	587.0	610.3
Total	Demersal	61.6	57.8	58.6	60.5	60.9	53.6	49.7	51.1	53.7	58.3					
	Pelagic	78.6	74.9	77.7	80.0	70.2	84.0	67.7	78.0	79.8	69.1					
	Shellfish	38.1	37.0	41.7	41.6	43.0	54.2	49.8	56.3	56.2	57.6					
	Total	65.1	62.0	65.4	68.2	61.7	60.3	53.7	58.7	61.1	60.4					

Table 18. Voyages and landings by Scottish based vessels by landing district, 2005 and 2006

Voyages ending in district:	2005			2006		
	Number	Tonnes	Value (1) (£000)	Number	Tonnes	Value (1) (£000)
Eyemouth	4,713	2,850	4,718	7,912	2,788	6,271
Pittenweem	5,431	1,449	3,306	4,708	1,647	3,973
Aberdeen	1,816	24,665	14,518	2,266	16,296	13,635
Peterhead	2,438	115,688	79,512	2,498	101,866	83,424
Fraserburgh	5,317	46,101	51,049	5,093	29,382	51,732
Buckie	3,395	2,168	4,262	1,935	1,520	3,214
Wick	1,936	10,559	13,537	2,309	10,152	14,452
Orkney	1,940	3,588	5,355	3,656	3,136	5,365
Shetland	2,233	112,083	54,466	3,325	73,466	46,749
Stornoway	6,330	3,635	8,789	8,696	4,214	12,745
Lochinver	1,687	3,096	7,627	1,777	3,457	8,821
Kinlochbervie	729	4,651	7,188	901	4,561	7,459
Ullapool	2,138	3,745	6,800	2,659	5,172	9,201
Mallaig	3,170	4,507	6,671	3,037	3,787	8,740
Oban	3,648	2,463	5,098	4,106	2,816	6,802
Campbeltown	8,800	3,987	7,601	9,605	4,315	9,354
Ayr	4,560	5,073	5,840	5,530	4,724	7,974
Portree	5,813	2,069	6,249	7,129	2,305	7,777
Other UK	1,926	7,475	10,814	2,278	6,858	10,670
Denmark	48	60,730	8,517	47	45,244	8,170
Eire	26	359	1,015	78	5,580	2,465
Netherlands	547	7,645	13,080	509	6,934	13,141
Norway	35	16,670	10,255	37	21,978	15,219
Spain	166	3,317	8,096	146	2,176	6,030
Other foreign ports	47	34,487	4,683	60	14,843	5,109
Total	68,889	483,062	349,045	80,297	379,218	368,495

(1) When the Register of Buyers and Sellers (RBS) was introduced in September 2005, Sales Notes were not initially required for sales of shellfish and information on the value of such landings is consequently missing. The value has therefore been estimated for a number of landings, mostly shellfish, relating to voyages starting on or after 1 September 2005.

Table 19. Liveweight and value of landings into the UK by UK vessels, by main species (over £5m value in 2006) and country of landing, 2002 to 2006

		Tonnes (thousand)					Value (£ million) (1)				
		2002	2003	2004	2005	2006	2002	2003	2004	2005	2006
UK vessels into: Scotland	Cod	17.0	9.0	7.2	7.3	7.3	23.8	14.0	12.4	13.0	14.0
	Haddock	46.8	37.9	42.7	45.3	37.4	30.6	25.3	30.4	36.7	43.8
	Monks	10.1	7.2	7.8	9.6	9.3	21.4	14.8	16.4	23.9	25.0
	Saithe	8.5	7.6	8.1	10.6	11.5	3.5	3.1	3.3	4.9	5.8
	Whiting	8.8	6.5	5.5	5.8	8.3	5.2	4.2	4.0	4.2	7.5
	Herring	38.2	51.9	53.5	71.4	57.1	6.2	6.4	6.5	14.4	13.2
	Mackerel	89.5	98.5	110.8	116.0	64.6	40.3	41.5	55.1	75.9	50.4
	Crabs	10.1	9.1	9.7	10.6	12.7	12.0	10.8	10.9	12.5	17.0
	Lobsters	0.3	0.3	0.4	0.4	0.7	3.4	3.4	4.4	4.5	7.6
	Nephrops	21.4	20.6	22.9	25.2	29.6	56.4	52.0	57.2	67.9	89.3
	Scallops	9.1	10.1	11.5	9.8	8.6	14.8	15.7	18.3	15.7	17.8
	Other	56.2	47.0	57.1	54.4	42.2	41.9	40.3	39.7	35.0	32.3
Total	316.3	305.6	337.2	366.3	289.2	259.6	231.4	258.6	308.7	323.7	
England and Wales	Cod	7.6	6.1	7.4	5.9	5.0	9.4	8.0	9.2	7.8	5.5
	Dover sole	2.1	2.2	2.0	1.8	1.9	12.6	13.9	12.8	12.4	14.6
	Monks	2.8	2.7	2.8	2.8	2.8	6.0	5.7	6.0	6.4	6.7
	Crabs	12.7	14.1	11.5	8.9	12.4	13.7	14.2	12.2	10.9	16.1
	Cuttlefish	3.5	5.1	5.0	3.0	3.6	3.3	4.2	4.1	3.0	5.2
	Lobsters	0.8	1.0	0.9	0.9	1.6	8.1	9.3	8.0	7.6	18.5
	Nephrops	2.4	2.7	2.8	3.9	5.5	4.8	5.3	5.9	8.4	13.8
	Scallops	9.2	8.6	8.9	10.4	10.1	12.6	12.7	12.7	16.4	15.4
	Whelks	7.8	8.4	10.6	10.2	11.2	3.6	4.1	5.8	6.2	6.5
	Other	80.4	69.9	58.5	62.5	55.6	63.1	67.0	54.0	53.6	47.4
	Total	129.4	120.7	110.5	110.4	109.6	137.4	144.5	130.8	132.5	149.8
	Northern Ireland	Nephrops	4.6	4.4	4.7	4.7	5.9	7.5	6.7	7.2	7.8
Other		15.3	13.8	9.1	10.3	11.7	10.2	9.0	7.1	7.0	9.2
Total		19.9	18.2	13.8	15.0	17.6	17.7	15.7	14.3	14.7	20.2
UK	Cod	25.7	15.5	15.2	13.8	12.9	35.0	22.7	22.7	21.8	20.8
	Dover sole	2.1	2.3	2.0	1.8	1.9	12.8	14.1	12.9	12.5	15.0
	Haddock	51.9	40.7	45.4	47.6	38.9	34.6	27.5	32.7	38.7	45.2
	Hake	2.1	1.9	2.2	2.6	2.7	5.6	4.1	5.3	6.8	7.2
	Lemon sole	2.3	2.2	2.1	2.1	2.0	7.3	6.7	6.0	6.4	6.1
	Megrimms	4.0	3.6	3.4	3.3	3.0	8.0	8.2	7.7	8.3	8.3
	Monks	13.1	10.1	10.8	12.6	12.2	27.9	20.8	22.7	30.6	32.1
	Saithe	9.9	8.5	9.0	11.4	12.2	4.1	3.5	3.8	5.4	6.1
	Whiting	11.4	8.2	7.4	8.9	12.1	6.6	5.1	5.0	5.7	9.8
	Herring	42.5	55.2	56.2	76.4	62.1	6.9	7.0	7.6	15.9	14.5
	Mackerel	96.6	106.5	115.3	120.6	70.4	42.7	44.6	57.0	78.3	54.9
	Cockles	14.3	26.8	12.9	13.2	11.3	4.2	16.9	10.1	8.1	5.3
	Crabs	23.3	23.8	21.7	20.0	26.2	26.0	25.5	23.5	23.7	34.1
	Cuttlefish	3.5	5.1	5.0	3.0	3.6	3.3	4.2	4.1	3.0	5.2
	Lobsters	1.2	1.3	1.4	1.3	2.3	11.7	12.8	12.6	12.2	26.6
	Nephrops	28.4	27.6	30.4	33.8	41.0	68.8	64.0	70.3	84.0	114.2
	Scallops	18.8	19.2	21.1	20.7	19.0	28.0	29.1	31.8	32.7	33.7
	Whelks	8.7	9.3	12.1	11.2	12.0	4.0	4.5	6.6	6.7	7.1
	Other	105.9	76.9	87.9	87.6	70.8	77.2	70.2	61.1	55.1	47.8
	Total	465.6	444.6	461.5	491.7	416.5	414.7	391.6	403.7	456.0	493.8

Table 20. Liveweight and value of landings into Scotland by UK vessels, by main species (value of £2.0m in 2006) 2002 to 2006

	Tonnes					Value (£ 000) (1)					£ per tonne (standard weight)				
	2002	2003	2004	2005	2006	2002	2003	2004	2005	2006	2002	2003	2004	2005	2006
Cod	17,025	8,955	7,178	7,323	7,292	23,814	13,969	12,373	13,008	14,017	1,637	1,825	2,017	2,078	2,249
Haddock	46,842	37,862	42,696	45,282	37,392	30,642	25,266	30,432	36,747	43,764	759	774	827	941	1,358
Hake	677	525	947	1,530	1,846	1,744	1,150	2,060	4,069	4,992	2,987	2,540	2,524	3,084	3,137
Lemon sole	895	819	671	878	879	2,162	1,807	2,065	2,035	2,147	2,512	2,294	3,199	2,410	2,540
Ling	6,026	3,825	3,760	2,948	2,616	6,560	4,074	3,939	3,239	3,137	1,252	1,225	1,205	1,264	1,379
Megrimms	2,531	2,174	1,962	1,842	1,863	4,195	4,418	4,018	3,812	4,619	1,740	2,134	2,150	2,173	2,604
Monks	10,086	7,248	7,807	9,628	9,309	21,432	14,761	16,371	23,946	25,028	2,686	2,546	2,571	3,103	3,441
Saithe	8,493	7,600	8,137	10,551	11,497	3,540	3,105	3,317	4,876	5,809	496	486	485	550	601
Whiting	8,849	6,516	5,472	5,753	8,271	5,215	4,228	3,957	4,199	7,473	666	733	817	825	1,021
Witches	2,036	2,239	1,995	1,430	1,281	2,294	3,128	3,472	2,564	2,065	1,172	1,453	1,810	1,864	1,676
Other demersal	18,558	15,544	12,547	7,414	5,709	17,708	16,952	14,188	9,800	7,465	1,073	1,251	1,295	1,514	1,488
Total demersal	122,019	93,306	93,174	94,579	87,956	119,307	92,856	96,193	108,295	120,515	1,132	1,152	1,195	1,332	1,597
Herring	38,231	51,909	53,510	71,385	57,081	6,219	6,401	6,519	14,446	13,164	163	123	122	202	231
Mackerel	89,515	98,496	110,757	115,970	64,590	40,256	41,474	55,065	75,939	50,403	450	421	497	655	780
Other pelagic	15,664	12,939	27,288	29,851	22,318	1,741	1,045	1,605	1,511	1,935	111	81	59	51	87
Total pelagic	143,411	163,344	191,555	217,205	143,989	48,217	48,920	63,189	91,895	65,502	336	299	330	423	455
Edible crabs	7,693	7,240	6,937	8,248	9,795	8,481	7,995	7,401	9,106	12,030	1,102	1,104	1,067	1,104	1,228
Lobsters	328	301	425	414	710	3,426	3,352	4,385	4,467	7,595	10,449	11,150	10,317	10,791	10,701
Nephrops	21,359	20,589	22,920	25,199	29,616	56,448	52,047	57,209	67,872	89,288	2,643	2,528	2,496	2,693	3,015
Scallops	9,145	10,055	11,538	9,777	8,600	14,757	15,701	18,324	15,720	17,825	1,614	1,562	1,588	1,634	2,213
Squid	1,165	2,214	2,125	1,898	871	1,968	4,826	5,276	4,182	2,239	1,689	2,180	2,482	2,203	2,572
Velvet crabs	1,986	1,517	2,298	1,802	2,593	3,128	2,379	3,116	2,995	4,757	1,575	1,568	1,356	1,662	1,835
Other shellfish	9,158	7,074	6,269	7,138	5,096	3,915	3,348	3,478	4,204	3,932	427	473	555	590	772
Total shellfish	50,835	48,990	52,513	54,476	57,280	92,123	89,647	99,189	108,545	137,666	1,812	1,830	1,889	1,999	2,426
Total landings	316,265	305,640	337,242	366,260	289,226	259,647	231,423	258,571	308,736	323,684	866	790	797	875	1,172

(1) When the Register of Buyers and Sellers (RBS) was introduced in September 2005, Sales Notes were not initially required for sales of shellfish and information on the value of such landings is consequently missing. The value has therefore been estimated for a number of landings, mostly shellfish, relating to voyages starting on or after 1 September 2005.

Table 21. Liveweight and value (£) of landings into Scottish ports by UK vessels, by landing district and species type, 2002 to 2006

		2002		2003		2004		2005		2006	
		Tonnes	Value (£000)	Tonnes	Value (£000)	Tonnes	Value (£000)	Tonnes	Value (£000)	Tonnes	Value (£000)
Eyemouth	Demersal	2,825	2,487	1,882	1,917	2,472	2,181	1,776	1,853	1,123	1,484
	Pelagic	-	-	-	-	1	1	0	0	0	0
	Shellfish	998	2,209	1,002	2,535	1,295	3,090	1,235	3,248	1,965	5,644
	Total	3,823	4,696	2,884	4,452	3,768	5,271	3,010	5,101	3,088	7,128
Pittenweem	Demersal	80	62	24	19	103	125	5	5	16	25
	Pelagic	-	-	0	0	0	0	0	0	-	-
	Shellfish	942	1,836	892	1,887	1,313	2,615	1,444	3,301	1,631	3,950
	Total	1,021	1,898	916	1,905	1,416	2,740	1,449	3,306	1,648	3,975
Aberdeen	Demersal	15,373	13,333	12,463	10,670	12,494	10,169	11,573	10,934	6,717	8,370
	Pelagic	982	58	4	1	6,623	353	11,668	587	7,799	671
	Shellfish	1,206	2,701	1,557	2,863	2,695	4,933	1,922	3,663	2,194	5,152
	Total	17,561	16,093	14,023	13,535	21,812	15,455	25,164	15,184	16,710	14,193
Peterhead	Demersal	37,511	36,881	26,406	26,031	29,018	29,112	35,659	37,150	35,541	45,144
	Pelagic	53,389	17,397	61,559	20,020	82,007	28,353	79,058	37,114	66,986	32,879
	Shellfish	2,022	5,540	1,996	5,138	2,675	6,224	2,773	6,891	2,472	7,371
	Total	92,922	59,818	89,961	51,189	113,700	63,689	117,490	81,154	104,998	85,393
Fraserburgh	Demersal	12,896	9,960	11,794	9,379	12,156	9,880	12,475	13,012	11,299	14,577
	Pelagic	16,432	5,401	24,881	6,738	21,291	7,610	23,275	12,876	7,367	5,776
	Shellfish	6,657	14,882	7,320	15,059	9,222	19,485	10,955	26,219	11,462	33,058
	Total	35,985	30,244	43,994	31,176	42,670	36,975	46,705	52,107	30,129	53,411
Buckie	Demersal	1,742	1,730	1,483	1,595	887	946	667	894	368	598
	Pelagic	17	5	8	3	4	1	3	1	-	-
	Shellfish	1,191	2,122	1,663	3,094	1,980	3,844	1,919	3,975	1,338	2,912
	Total	2,950	3,856	3,154	4,692	2,871	4,791	2,589	4,870	1,706	3,509
Wick	Demersal	16,070	17,555	11,818	12,783	10,657	12,429	10,067	12,121	8,429	11,267
	Pelagic	94	28	6	1	12	5	12	5	0	1
	Shellfish	4,886	6,107	4,835	5,930	5,458	5,768	5,188	6,071	5,135	6,742
	Total	21,051	23,690	16,659	18,715	16,127	18,201	15,267	18,197	13,564	18,009
Orkney	Demersal	71	30	30	14	50	21	30	31	51	51
	Pelagic	1	0	1	0	1	0	3	3	8	10
	Shellfish	2,690	3,850	2,347	3,239	3,375	4,713	3,608	5,349	3,079	5,306
	Total	2,762	3,881	2,377	3,254	3,426	4,734	3,642	5,382	3,137	5,367
Shetland	Demersal	10,719	9,769	7,612	7,047	9,018	9,042	9,664	11,569	11,514	16,520
	Pelagic	69,116	24,860	73,986	21,828	80,005	26,619	102,191	41,165	61,614	26,016
	Shellfish	1,137	1,695	1,069	1,523	1,137	1,706	1,059	1,928	1,740	4,838
	Total	80,971	36,323	82,667	30,398	90,159	37,366	112,914	54,663	74,868	47,374
Stornoway	Demersal	593	412	530	337	318	242	172	169	125	250
	Pelagic	-	-	-	-	-	-	0	0	4	4
	Shellfish	3,714	8,650	3,670	8,331	3,705	9,127	3,465	8,627	4,089	12,501
	Total	4,307	9,062	4,199	8,668	4,022	9,370	3,637	8,796	4,218	12,754
Lochinver	Demersal	6,435	8,036	4,009	5,262	3,623	5,748	2,525	5,902	2,472	6,210
	Pelagic	71	18	6	3	-	-	-	-	-	-
	Shellfish	937	2,737	1,040	3,136	861	2,647	707	1,967	985	2,611
	Total	7,443	10,791	5,055	8,401	4,484	8,395	3,232	7,869	3,457	8,821
Kinlochbervie	Demersal	6,852	8,146	6,357	7,679	5,606	6,671	4,364	6,507	4,197	6,534
	Pelagic	154	37	37	9	2	0	8	2	7	1
	Shellfish	616	1,319	685	1,379	464	1,029	369	785	495	1,088
	Total	7,622	9,502	7,079	9,066	6,072	7,699	4,741	7,294	4,699	7,624
Ullapool	Demersal	6,479	6,909	5,122	6,239	4,061	6,636	3,770	5,902	4,363	6,829
	Pelagic	202	69	28	11	168	65	33	18	203	144
	Shellfish	1,810	4,199	1,706	3,861	1,484	3,476	1,417	3,741	1,945	4,794
	Total	8,491	11,176	6,856	10,111	5,713	10,178	5,220	9,661	6,511	11,767
Mallaig	Demersal	2,298	1,856	1,847	1,551	1,541	1,381	924	989	996	1,404
	Pelagic	2,662	275	2,543	280	1,440	182	953	126	0	0
	Shellfish	3,073	6,290	3,130	5,964	2,944	5,849	2,754	5,784	3,010	7,820
	Total	8,032	8,421	7,520	7,795	5,925	7,412	4,632	6,899	4,007	9,225
Oban	Demersal	627	565	255	201	136	159	299	390	84	131
	Pelagic	-	-	-	-	-	-	-	-	0	0
	Shellfish	4,321	7,662	3,438	6,447	3,185	6,181	3,047	5,843	3,032	7,170
	Total	4,948	8,228	3,693	6,647	3,320	6,340	3,346	6,233	3,116	7,301
Campbeltown	Demersal	245	208	159	116	98	72	68	61	81	95
	Pelagic	185	23	273	25	0	0	0	0	0	0
	Shellfish	4,086	7,338	3,992	7,153	5,063	7,551	4,454	8,439	5,017	10,620
	Total	4,516	7,570	4,424	7,294	5,162	7,624	4,523	8,501	5,098	10,715
Ayr	Demersal	832	981	850	1,319	751	1,156	476	714	481	895
	Pelagic	1	0	12	1	0	0	1	2	0	0
	Shellfish	8,428	6,389	6,628	5,721	3,911	4,761	6,084	6,439	5,486	8,445
	Total	9,261	7,370	7,490	7,041	4,663	5,916	6,561	7,155	5,967	9,340
Portree	Demersal	373	387	667	697	187	223	65	89	101	133
	Pelagic	105	45	1	0	-	-	-	-	-	-
	Shellfish	2,121	6,596	2,020	6,387	1,747	6,191	2,075	6,275	2,204	7,645
	Total	2,599	7,028	2,687	7,084	1,934	6,414	2,140	6,364	2,305	7,777
Total	Demersal	122,019	119,307	93,306	92,856	93,174	96,192	94,579	108,293	87,956	120,515
	Pelagic	143,411	48,217	163,344	48,920	191,555	63,189	217,206	91,897	143,989	65,502
	Shellfish	50,835	92,123	48,990	89,647	52,513	99,189	54,476	108,545	57,280	137,666
	Total	316,265	259,647	305,640	231,424	337,242	258,571	366,260	308,736	289,226	323,684

(1) When the Register of Buyers and Sellers (RBS) was introduced in September 2005, Sales Notes were not initially required for sales of shellfish and information on the value of such landings is consequently missing. The value has therefore been estimated for a number of landings, mostly shellfish, relating to voyages starting on or after 1 September 2005.

Table 22. Disposal of sea fish landed (1) into Scotland by UK vessels, 2002 to 2006

	Demersal						Pelagic						Shellfish					
	2002	2003	2004	2005	2006	2007	2003	2004	2005	2006	2002	2003	2004	2005	2006			
Human consumption	117.8	90.7	91.1	94.0	87.6	137.5	154.6	169.6	187.5	122.4	50.8	49.0	52.5	54.5	57.3			
Klondyked	-	-	0.0	0.0	-	0.1	-	0.0	0.0	-	-	-	0.0	-	0.0			
Meal and oil	3.7	2.4	1.9	0.5	0.3	5.7	8.2	22.0	29.3	21.6	-	-	0.0	0.0	0.0			
Dumped/ bait	0.4	0.1	0.1	0.1	0.1	-	0.4	0.0	0.1	-	-	-	0.0	0.0	-			
Other	0.1	-	0.0	0.0	0.0	0.2	0.2	-	0.2	-	-	-	0.0	0.0	0.0			
Total	122.0	93.3	93.2	94.6	88.0	143.4	163.3	191.6	217.2	144.0	50.8	49.0	52.5	54.5	57.3			

(1) '000 tonnes

Table 23. Liveweight and value (£) of landings into Scotland by UK vessels, by landing district and main (2) species, 2006

	Eyemouth	
	Tonnes	£'000
Cod	30	48
Gurnards - Red	26	18
Haddock	680	923
Lemon sole	54	129
Plaice	41	38
Whiting	263	250
Other demersal	29	78
Total demersal	1,123	1,484
Total pelagic	0	0
Edible crabs	156	175
Lobsters	73	800
Nephrops	1,492	4,220
Scallops	119	197
Squid	41	102
Velvet crabs	82	129
Other shellfish	3	20
Total shellfish	1,965	5,644
Total landings	3,088	7,128

	Pittenweem	
	Tonnes	£'000
Total demersal	16	25
Edible crabs	116	140
Lobsters	63	659
Nephrops	1,310	2,850
Razor Fish	38	86
Squid	20	72
Velvet crabs	70	122
Other shellfish	15	21
Total shellfish	1,631	3,950
Total landings	1,648	3,975

	Aberdeen	
	Tonnes	£'000
Cod	592	1,041
Haddock	4,208	5,013
Hake	95	134
Lemon sole	118	314
Ling	55	65
Megrims	32	72
Monks	185	456
Plaice	90	82
Pollack	50	67
Saithe	567	331
Skates & Rays	21	16
Whiting	612	557
Witches	21	26
Other demersal	71	196
Total demersal	6,717	8,370
Blue whiting	7,796	666
Other pelagic	4	5
Total pelagic	7,799	671
Edible crabs	246	266
Lobsters	68	715
Nephrops	410	1,359
Scallops	1,283	2,413
Squid	53	174
Velvet crabs	129	216
Other shellfish	6	9
Total shellfish	2,194	5,152
Total landings	16,710	14,193

	Peterhead	
	Tonnes	£'000
Blue Ling	83	79
Catfish	161	269
Cod	3,457	6,797
Dogfish - Spur	54	55
Haddock	18,685	22,046
Hake	438	680
Halibut	90	457
Lemon sole	409	1,026
Ling	632	744
Megrims	345	841
Monks	1,852	4,826
Plaice	286	275
Pollack	301	418
Redfish	56	65
Roes	39	84
Saithe	4,558	2,329
Skates & Rays	57	48
Tusk	63	54
Whiting	3,652	3,554
Witches	138	205
Other demersal	158	246
Other flatfish	26	47
Total demersal	35,541	45,144
Blue whiting	5,122	434
Herring	29,293	6,922
Horse Mackerel	701	128
Mackerel	31,869	25,395
Total pelagic	66,986	32,879
Edible Crabs	95	105
Nephrops	1,793	6,142
Scallops	411	740
Squid	141	317
Velvet crabs	26	38
Other shellfish	6	28
Total shellfish	2,472	7,371
Total landings	104,998	85,393

	Fraserburgh	
	Tonnes	£'000
Blue Ling	22	24
Cod	766	1,211
Dogfish - Spur	32	32
Haddock	4,506	4,570
Hake	90	82
Halibut	43	239
Lemon sole	184	403
Ling	170	209
Megrims	286	644
Monks	1,820	4,712
Plaice	198	148
Redfish	31	33
Saithe	726	325
Skates & Rays	40	26
Tusk	22	19
Whiting	1,944	1,330
Witches	292	334
Other demersal	127	235
Total demersal	11,299	14,577
Herring	122	29
Mackerel	7,245	5,747
Total pelagic	7,367	5,776
Edible Crabs	349	406
Nephrops	10,077	30,600
Scallops	683	1,232
Squid	283	722
Velvet crabs	46	65
Other shellfish	23	33
Total shellfish	11,462	33,058
Total landings	30,129	53,411

	Buckie	
	Tonnes	£'000
Cod	48	90
Dogfish - Spur	20	29
Haddock	81	92
Ling	30	40
Monks	76	210
Saithe	25	13
Whiting	23	20
Other demersal	65	105
Total demersal	368	598
Edible crabs	39	36
Nephrops	586	1,545
Scallops	588	1,058
Squid	80	199
Velvet crabs	40	53
Other shellfish	5	20
Total shellfish	1,338	2,912
Total landings	1,706	3,509

	Wick	
	Tonnes	£'000
Blue Ling	28	33
Cod	563	1,153
Dogfish - Spur	70	81
Greenland halibut	20	39
Haddock	1,869	2,275
Hake	72	93
Ling	244	392
Megrims	299	827
Monks	1,420	3,884
Plaice	103	87
Redfish	99	116
Saithe	3,036	1,529
Skates & rays	100	97
Tusk	38	32
Whiting	314	332
Witches	37	47
Other demersal	119	252
Total demersal	8,429	11,267
Total pelagic	0	1
Edible crabs	2,627	3,454
Lobsters	42	458
Mussels	1,202	357
Nephrops	265	798
Scallops	615	1,084
Squid	38	82
Velvet Crabs	107	194
Whelks	226	300
Other shellfish	14	16
Total shellfish	5,135	6,742
Total landings	13,564	18,009

	Orkney	
	Tonnes	£'000
Total demersal	51	51
Total pelagic	8	10
Edible crabs	1,576	2,066
Green crabs	157	84
Lobsters	108	1,178
Periwinkles	53	65
Scallops	130	256
Velvet crabs	800	1,486
Whelks	243	130
Other shellfish	10	42
Total shellfish	3,079	5,306
Total landings	3,137	5,367

	Shetland	
	Tonnes	£'000
Catfish	42	62
Cod	1,449	2,912
Dogfish - Spur	32	35
Haddock	3,811	4,601
Hake	87	96
Halibut	23	123
Lemon Sole	76	195
Ling	496	543
Megrims	392	919
Monks	1,741	4,376
Plaice	211	180
Pollack	139	194
Saithe	1,335	613
Skates & rays	163	143
Tusk	30	19
Whiting	1,310	1,290
Witches	50	57
Other demersal	127	161
Total demersal	11,514	16,520
Blue whiting	8,463	699
Herring	27,660	6,212
Horse Mackerel	61	5
Mackerel	25,263	19,101
Other pelagic	167	-
Total pelagic	61,614	26,016
Edible crabs	460	440
Nephrops	238	963
Scallops	772	2,737
Squid	136	407
Velvet crabs	100	168
Other shellfish	34	122
Total shellfish	1,740	4,838
Total landings	74,868	47,374

	Stornoway	
	Tonnes	£'000
Dogfish - Spur	30	90
Skates & rays	22	32
Other demersal	73	128
Total demersal	125	250
Total pelagic	4	4
Edible crabs	877	1,020
Lobsters	152	1,576
Nephrops	2,323	7,818
Scallops	434	1,430
Velvet crabs	269	493
Other shellfish	33	163
Total shellfish	4,089	12,501
Total landings	4,218	12,754

	Lochinver	
	Tonnes	£'000
Cod	36	69
Dogfish - Spur	21	20
Forkbeard	27	27
Haddock	327	393
Hake	704	3,009
Ling	521	607
Megrims	68	174
Monks	497	1,689
Saithe	155	82
Skates & rays	34	39
Tusk	26	21
Other demersal	54	82
Total demersal	2,472	6,210
Edible crabs	28	29
Nephrops	888	2,401
Red crabs	21	11
Scallops	24	87
Other shellfish	24	82
Total shellfish	985	2,611
Total landings	3,457	8,821

Chart 7. Average prices of landings into Scotland by UK vessels, by species type, 1989 to 2006

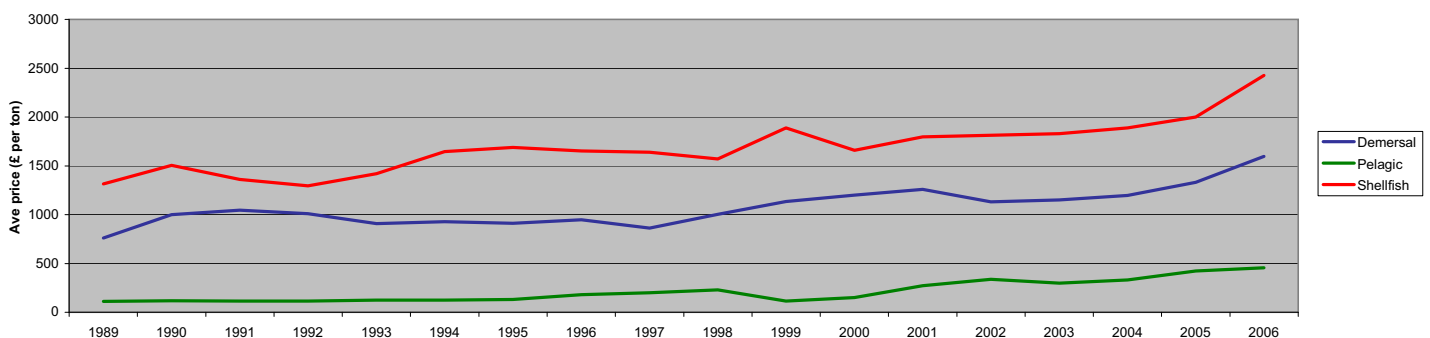


Table 23. continued

	Kinlochbervie	
	Tonnes	£'000
Blue Ling	222	216
Cod	250	495
Dogfish - Portugese	20	22
Dogfish - Spur	50	59
Forkbeard	52	39
Greenland halibut	62	125
Haddock	745	854
Hake	95	157
Ling	289	329
Megrim	245	649
Monks	993	2,736
Plaice	27	18
Redfish	36	35
Saithe	760	398
Scabbardfish	41	54
Skates & rays	110	90
Tusk	61	43
Whiting	43	35
Witches	22	31
Other demersal	73	149
Total demersal	4,197	6,534
Total pelagic	7	1
Edible crabs	226	269
Lobsters	22	225
Nephrops	173	468
Squid	47	78
Velvet crabs	21	36
Other shellfish	7	13
Total shellfish	495	1,088
Total landings	4,699	7,624

	Ullapool	
	Tonnes	£'000
Blue Ling	115	131
Bluemouth	39	47
Cod	68	128
Dogfish - L nose velvet	43	14
Dogfish - Portugese	44	12
Dogfish - Spur	25	30
Forkbeard	47	48
Gulper shark	41	30
Haddock	2,035	2,540
Hake	29	85
Ling	137	161
Megrim	123	343
Monks	523	1,634
Saithe	307	171
Skates & rays	48	63
Tusk	31	28
Witches	640	1,270
Other demersal	67	93
Total demersal	4,363	6,829
Mackerel	200	144
Other pelagic	3	0
Total pelagic	203	144
Edible crabs	951	1,180
Nephrops	831	3,041
Scallops	123	297
Other shellfish	40	277
Total shellfish	1,945	4,794
Total landings	6,511	11,767

	Mallaig	
	Tonnes	£'000
Dogfish - Spur	111	140
Haddock	267	261
Hake	132	241
Megrim	48	90
Monks	172	407
Skates & Rays	81	71
Whiting	74	70
Witches	51	57
Other demersal	61	68
Total demersal	996	1,404
Total pelagic	0	0
Edible crabs	116	132
Nephrops	2,336	6,568
Scallops	463	772
Velvet crabs	76	151
Other shellfish	19	198
Total shellfish	3,010	7,820
Total landings	4,007	9,225

	Oban	
	Tonnes	£'000
Dogfish - Spur	34	50
Skates & rays	20	40
Other demersal	29	41
Total demersal	84	131
Total pelagic	0	0
Edible crabs	852	1,050
Lobsters	56	631
Nephrops	767	2,974
Scallops	1,005	1,694
Velvet crabs	325	670
Other shellfish	27	151
Total shellfish	3,032	7,170
Total landings	3,116	7,301

	Campbeltown	
	Tonnes	£'000
Dogfish - Spur	31	32
Other demersal	49	63
Total demersal	81	95
Total pelagic	0	0
Edible crabs	511	571
Lobsters	39	425
Nephrops	2,936	7,268
Queen scallops	230	114
Razor fish	66	178
Scallops	694	1,192
Velvet crabs	424	796
Wheiks	96	39
Other shellfish	21	37
Total shellfish	5,017	10,620
Total	5,098	10,715

	Ayr	
	Tonnes	£'000
Dogfish - Spotted	25	6
Dogfish - Spur	185	255
Haddock	39	41
Hake	88	384
Ling	25	27
Skates & rays	83	131
Other demersal	35	51
Total demersal	481	895
Total pelagic	0	0
Cockles	188	251
Edible crabs	27	30
Lobsters	27	286
Nephrops	1,830	3,935
Periwinkles	131	158
Queen scallops	2,218	1,546
Scallops	1,016	2,172
Wheiks	32	19
Other shellfish	16	49
Total shellfish	5,486	8,445
Total landings	5,967	9,340

	Portree	
	Tonnes	£'000
Haddock	86	100
Other demersal	14	32
Total demersal	101	133
Edible crabs	544	660
Nephrops	1,357	6,315
Scallops	224	433
Velvet crabs	69	123
Other shellfish	11	113
Total shellfish	2,204	7,645
Total	2,305	7,777

	All ports	
	Tonnes	£'000
Blue Ling	480	495
Bluemouth	44	54
Catfish	274	443
Cod	7,292	14,017
Dogfish - L nose velvet	43	14
Dogfish - Other	24	11
Dogfish - Portugese	72	42
Dogfish - Spotted	44	17
Dogfish - Spur	711	925
Forkbeard	157	139
Greenland halibut	101	217
Gulper shark	41	30
Gurnards - Red	53	33
Haddock	37,392	43,764
Hake	1,846	4,992
Halibut	199	1,063
John dory	50	144
Lemon sole	879	2,147
Ling	2,616	3,137
Megrim	1,863	4,619
Monks	9,309	25,028
Other flatfish	46	78
Plaice	974	842
Pollack	525	720
Redfish	248	280
Roes	55	121
Saithe	11,497	5,809
Scabbardfish	63	93
Skates & rays	809	839
Turbot	32	244
Tusk	283	226
Whiting	8,271	7,473
Witches	1,281	2,065
Other demersal	383	393
Total demersal	87,956	120,515
Blue whiting	21,381	1,799
Herring	57,081	13,164
Horse mackerel	765	133
Mackerel	64,590	50,403
Other pelagic	173	3
Total pelagic	143,989	65,502
Cockles	204	273
Crabs other	21	35
Edible crabs	9,795	12,030
Green crabs	212	115
Lobsters	710	7,595
Mussels	1,203	357
Nephrops	29,616	89,288
Periwinkles	185	223
Queen scallops	2,480	1,812
Razor fish	108	273
Red crabs	32	60
Scallops	8,600	17,825
Squid	871	2,239
Velvet crabs	2,593	4,757
Wheiks	616	497
Other shellfish	36	286
Total shellfish	57,280	137,666
Total landings	289,226	323,684

(1) When the Register of Buyers and Sellers (RBS) was introduced in September 2005, Sales Notes were not initially required for sales of shellfish and information on the value of such landings is consequently missing. The value has therefore been estimated for a number of landings, mostly shellfish, relating to voyages starting on or after 1 September 2005.

(2) liveweight landings of 20 tonnes or more.

Chart 8. Liveweight landings into Scotland by UK vessels, by species type, 1966 to 2006

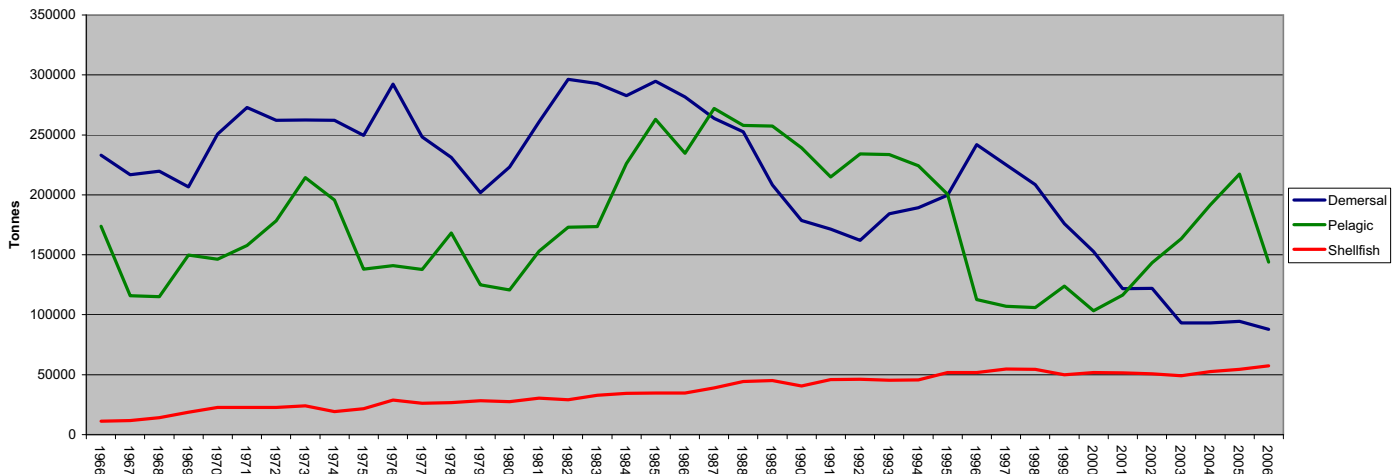


Chart 9. Average prices of landings into Scotland, by species type and month, 2006

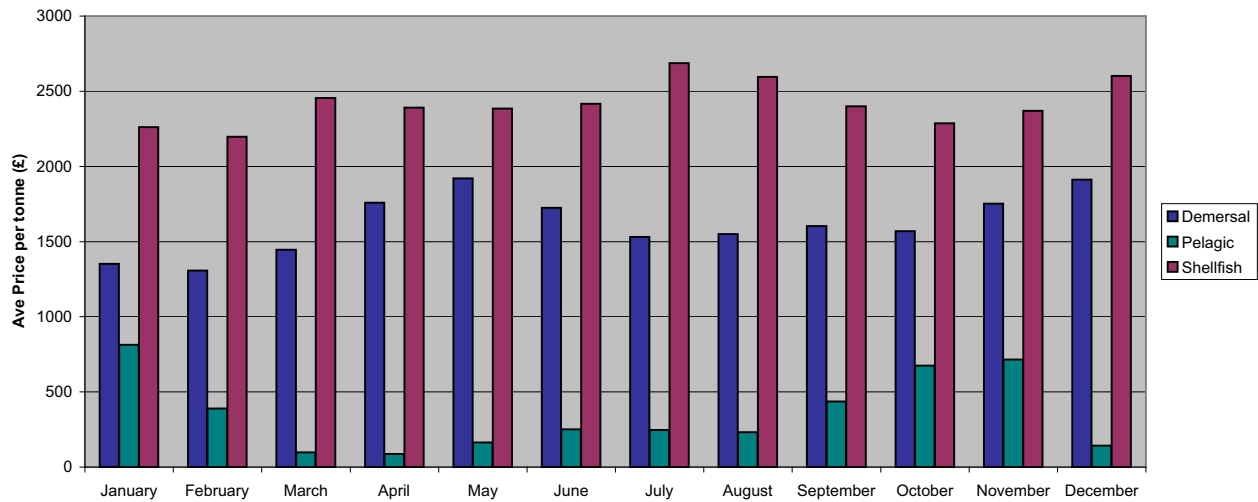


Table 24. Liveweight and value of landings into Scotland by foreign vessels, by main (1) species, 2002 to 2006

	Tonnes					Value (£'000) (1)				
	2002	2003	2004	2005	2006	2002	2003	2004	2005	2006
Blue ling	3,333	4,735	4,161	3,641	3,534	4,590	5,879	5,573	4,915	5,102
Cod	4,768	5,329	4,099	1,937	713	5,811	6,593	5,638	3,376	1,445
Hake	914	503	1,013	2,250	1,876	4,315	2,392	4,756	9,763	8,115
Monks	727	929	1,079	1,227	1,214	1,737	1,996	2,451	2,999	3,358
Roundnose grenadier	6,602	5,861	6,464	3,966	3,184	7,901	6,813	7,547	4,710	4,022
Saithe	5,313	6,182	7,796	7,823	8,137	3,183	3,562	3,910	4,525	4,181
Scabbardfish	3,911	2,870	2,387	2,403	2,172	8,667	5,903	5,128	4,682	4,685
Other demersal	13,841	11,384	9,289	6,738	5,111	13,644	11,921	9,808	7,323	5,976
Total demersal	39,409	37,793	36,289	29,984	25,942	49,848	45,060	44,811	42,292	36,882
Blue whiting	10,493	22,820	19,902	14,270	17,820	723	1,624	1,212	727	2,488
Herring	228	377	5,351	15,338	26,331	45	45	844	4,163	6,632
Mackerel	11,376	9,923	13,201	13,742	22,963	4,813	4,277	6,985	13,568	18,595
Other pelagic	32	1,966	173	850	1,986	8	388	17	172	396
Total pelagic	22,129	35,087	38,627	44,200	69,100	5,590	6,335	9,059	18,630	28,111
Edible crabs	-	1	125	429	623	-	1	138	461	1,738
Other shellfish	36	171	201	97	71	102	301	344	187	211
Total shellfish	36	171	326	526	693	102	302	482	648	1,949
Total	61,574	73,051	75,241	74,711	95,735	55,540	51,697	54,352	61,569	66,943

(1) landings of £1.0 million or more in 2006

Table 25 Liveweight and value of landings into Scotland by foreign vessels, by country of origin, 2002 to 2006

	Tonnes					Value (£'000) (1)				
	2002	2003	2004	2005	2006	2002	2003	2004	2005	2006
Denmark	42	1,853	4,571	8,675	14,731	88	177	555	1,486	5,604
Eire	11,425	10,023	18,089	16,337	18,989	4,867	4,299	7,531	9,833	10,248
Faroe	18,397	25,662	19,365	18,939	18,780	17,150	18,912	15,240	17,450	13,109
France	17,789	16,004	17,243	14,888	15,467	24,723	21,963	24,364	21,124	19,254
Germany	88	256	1,174	1,486	354	190	383	625	656	866
Iceland	233	4,137	1,513	1,454	1,768	340	447	178	71	156
Norway	10,242	11,736	11,370	9,404	20,782	810	948	782	1,740	9,289
Poland	-	-	34	359	2,665	-	-	12	160	1,207
Russia	-	617	43	-	-	-	43	31	-	-
Spain	3,106	2,277	1,579	2,674	2,183	7,174	4,462	5,000	8,866	7,181
Sweden	-	450	262	495	-	-	34	34	183	-
Other	253	36	-	-	16	198	29	-	-	30
Total	61,574	73,051	75,241	74,711	95,735	55,540	51,697	54,352	61,569	66,943

Table 26. Liveweight and value of landings into Scotland by foreign vessels, by landing district, 2002 to 2006

	Tonnes					Value (£'000) (1)				
	2002	2003	2004	2005	2006	2002	2003	2004	2005	2006
North east ports (2)	11,028	10,671	14,507	21,797	33,213	5,500	5,043	6,392	11,929	17,325
Other east coast	-	-	-	-	-	-	-	-	-	-
North mainland ports (3)	13,745	15,689	14,635	9,942	6,389	13,071	13,707	11,678	8,662	7,660
Orkney/Shetland	13,907	26,101	24,649	22,825	35,955	1,687	2,785	3,159	7,099	10,990
North west/WI ports (4)	22,894	20,589	21,372	20,146	20,145	35,283	30,161	32,974	33,879	30,925
South west ports (5)	-	-	77	-	34	-	-	149	-	42
Total	61,574	73,051	75,241	74,711	95,735	55,540	51,697	54,352	61,569	66,943

(1) When the Register of Buyers and Sellers (RBS) was introduced in September 2005, Sales Notes were not initially required for sales of shellfish and information on the value of such landings is consequently missing. The value has therefore been estimated for a number of landings, mostly shellfish, relating to voyages starting on or after 1 September 2005.

(2) Aberdeen to Buckie port districts; (3) Wick to Kinlochberrie; (4) Lochinver to Oban; (5) Campbeltown to Ayr

Table 27. Liveweight and value of landings by Scottish based vessels, by main (1) species, 2002 to 2006

	Landings into UK & abroad (tonnes)														
	Into UK					Abroad					Total				
	2002	2003	2004	2005	2006	2002	2003	2004	2005	2006	2002	2003	2004	2005	2006
Cod	16,822	8,727	6,986	7,133	7,106	283	261	338	188	230	17,105	8,988	7,325	7,321	7,336
Dover sole	11	15	8	20	11	239	233	355	353	341	250	248	363	373	353
Haddock	47,178	37,710	42,370	44,581	36,950	158	89	159	75	53	47,336	37,799	42,529	44,655	37,003
Hake	688	681	1,021	1,596	1,838	153	213	275	544	685	841	894	1,296	2,141	2,523
Lemon sole	901	817	670	877	878	142	149	160	196	233	1,044	966	830	1,073	1,112
Ling	5,209	3,420	3,359	2,775	2,440	321	59	141	44	63	5,530	3,479	3,500	2,819	2,503
Megrim	2,476	2,127	1,939	1,839	1,880	37	78	92	104	111	2,513	2,205	2,031	1,942	1,991
Monks	9,727	7,080	7,393	9,316	8,943	636	267	338	1,021	907	10,363	7,347	7,731	10,336	9,850
Plaice	1,485	1,298	885	933	1,004	6,999	5,744	6,999	5,502	5,041	8,484	7,042	7,885	6,435	6,045
Saithe	7,231	6,378	6,958	7,927	8,872	305	95	171	247	30	7,536	6,473	7,129	8,174	8,902
Whiting	8,916	6,536	5,564	6,018	4,466	51	45	63	49	62	8,967	6,581	5,627	6,067	8,528
Other demersal	16,735	14,444	10,963	5,309	4,528	5,933	3,186	4,015	3,039	3,410	22,668	17,631	14,978	8,349	7,938
Total demersal	117,378	89,234	88,116	88,325	82,916	15,258	10,420	13,107	11,361	11,168	132,636	99,654	101,224	99,686	94,085
Blue whiting	8,047	9,728	24,971	28,783	21,381	18,355	19,015	33,535	75,788	50,725	26,402	28,743	58,505	104,571	72,106
Herring	39,588	50,902	53,133	70,559	55,077	13,067	10,654	13,154	18,825	17,970	52,656	61,556	66,287	89,384	73,047
Mackerel	92,587	99,098	111,150	116,235	63,580	75,754	47,680	31,235	15,941	15,133	168,341	146,778	142,385	132,176	78,713
Other pelagic	10,035	3,565	2,632	1,279	938	3,607	213	1,484	653	996	13,642	3,778	4,116	1,932	1,934
Total pelagic	150,257	163,293	191,886	216,856	140,975	110,784	77,562	79,408	111,207	84,825	261,041	240,854	271,294	328,063	225,800
Edible crabs	6,014	5,724	5,919	6,418	8,384	30	20	58	61	85	6,044	5,744	5,977	6,479	8,469
Lobsters	323	287	413	406	708	0	1	1	2	3	323	288	414	408	711
Nephrops	20,768	20,406	22,719	24,928	29,449	32	36	35	167	204	20,800	20,441	22,754	25,094	29,652
Queen scallops	7,482	5,467	2,786	3,968	2,862	-	17	0	0	162	7,482	5,484	2,786	3,968	3,024
Scallops	11,682	12,534	14,116	12,454	10,969	0	1	1	3	1	11,682	12,535	14,117	12,458	10,970
Squid	1,190	2,223	2,136	1,916	873	180	100	111	140	95	1,370	2,323	2,247	2,056	968
Velvet crabs	1,971	1,519	2,299	1,802	2,594	-	-	-	-	-	1,971	1,519	2,299	1,802	2,594
Other shellfish	2,301	2,365	3,667	2,782	2,733	170	198	555	267	212	2,470	2,563	4,222	3,049	2,945
Total shellfish	51,731	50,525	54,056	54,674	58,572	411	373	760	640	761	52,143	50,898	54,816	55,313	59,334
Total landings	319,366	303,052	334,058	359,855	282,463	126,453	88,354	93,275	123,208	96,755	445,819	391,406	427,333	483,062	379,218

	Landings into UK & abroad (value £'000) (2)														
	Into UK					Abroad					Total				
	2002	2003	2004	2005	2006	2002	2003	2004	2005	2006	2002	2003	2004	2005	2006
Cod	23,525	13,649	12,036	12,671	13,654	429	384	526	301	399	23,954	14,032	12,562	12,971	14,053
Dover sole	48	69	41	131	169	1,573	1,628	2,417	2,637	2,871	1,622	1,696	2,458	2,768	3,040
Haddock	30,832	25,254	30,236	36,266	43,334	72	69	107	66	48	30,905	25,323	30,343	36,332	43,382
Hake	1,344	1,237	1,947	4,203	4,939	291	408	511	1,455	2,948	1,636	1,646	2,458	5,657	7,888
Lemon sole	2,165	1,803	2,049	2,030	2,145	395	335	351	461	687	2,560	2,138	2,401	2,492	2,832
Ling	5,668	3,579	3,504	3,072	2,937	828	153	176	90	67	6,496	3,732	3,680	3,163	3,004
Megrim	4,045	4,291	3,960	3,847	4,726	147	336	503	393	264	4,193	4,627	4,462	4,240	4,989
Monks	21,050	14,424	15,416	23,003	23,615	2,927	1,093	1,173	4,191	3,046	23,977	15,517	16,589	27,195	26,662
Plaice	1,018	1,101	690	853	874	8,067	8,001	8,675	7,433	6,934	9,085	9,102	9,365	8,286	7,808
Saithe	2,960	2,592	2,853	3,749	4,564	194	73	81	138	17	3,154	2,665	2,935	3,887	4,582
Whiting	5,254	4,219	3,983	4,248	7,561	24	22	41	29	50	5,278	4,241	4,023	4,277	7,611
Other demersal	17,032	18,979	12,963	7,476	6,456	6,745	5,493	7,185	4,161	4,093	23,777	24,472	20,149	11,638	10,550
Total demersal	114,942	91,196	89,679	101,549	114,975	21,692	17,995	21,746	21,355	21,425	136,634	109,191	111,425	122,904	136,400
Blue whiting	532	670	1,344	1,368	1,799	1,504	1,545	2,194	4,620	4,526	2,037	2,215	3,538	5,988	6,325
Herring	6,402	6,280	6,478	14,276	12,711	3,927	2,142	2,482	4,109	6,912	10,329	8,422	8,960	18,385	19,623
Mackerel	41,080	41,742	55,086	76,031	49,816	41,515	24,883	16,851	13,128	14,079	82,596	66,624	71,937	89,158	63,896
Other pelagic	1,871	465	309	187	139	959	12	517	611	1,621	2,830	477	826	798	1,759
Total pelagic	49,886	49,157	63,218	91,861	64,465	47,906	28,581	22,403	22,468	27,138	97,792	77,738	85,262	114,329	91,602
Edible crabs	6,359	6,182	6,152	6,885	10,232	9	13	30	50	47	6,368	6,195	6,182	6,934	10,280
Lobsters	3,359	3,180	4,228	4,360	7,592	1	3	2	10	22	3,360	3,183	4,231	4,370	7,614
Nephrops	55,864	52,119	57,209	67,463	88,940	114	125	118	751	932	55,978	52,244	57,327	68,214	89,872
Queen scallops	2,850	2,127	1,287	1,849	2,045	-	7	0	0	70	2,850	2,134	1,287	1,849	2,115
Scallops	17,787	19,425	22,116	20,167	20,886	0	1	1	5	2	17,787	19,426	22,117	20,172	20,888
Squid	2,005	4,838	5,285	4,202	2,247	1,032	553	557	733	363	3,037	5,391	5,842	4,935	2,609
Velvet crabs	3,110	2,381	3,118	2,994	4,758	-	-	-	-	-	3,110	2,381	3,118	2,994	4,758
Other shellfish	1,207	1,362	2,155	2,071	2,220	149	225	1,398	274	137	1,356	1,587	3,553	2,345	2,357
Total shellfish	92,541	91,615	101,549	109,989	138,920	1,305	927	2,106	1,823	1,573	93,846	92,542	103,655	111,812	140,493
Total landings	257,369	231,968	254,446	303,399	318,360	70,902	47,503	45,895	45,646	50,135	328,272	279,471	300,342	349,045	368,495

	Landings into UK & abroad (value £'000) (2006 prices)														
	Into UK					Abroad					Total				
	2002	2003	2004	2005	2006	2002	2003	2004	2005	2006	2002	2003	2004	2005	2006
Cod	26,070	14,700	12,615	13,021	13,654	475	413	551	309	399	26,546	15,113	13,166	13,330	14,053
Dover sole	54	74	43	134	169	1,744	1,753	2,533	2,710	2,871	1,797	1,827	2,576	2,844	3,040
Haddock	34,169	27,198	31,690	37,268	43,334	80	74	112	68	48	34,249	27,273	31,802	37,336	43,382
Hake	1,490	1,333	2,040	4,319	4,939	323	439	536	1,495	2,948	1,813	1,772	2,576	5,814	7,888
Lemon sole	2,399	1,942	2,148	2,086	2,145	438	361	368	474	687	2,837	2,303	2,516	2,560	2,832
Ling	6,281	3,855	3,672	3,157	2,937	918	165	184	93	67	7,199	4,020	3,856	3,250	3,004
Megrim	4,483	4,621	4,150	3,953	4,726	163	362	527	404	264	4,646	4,983	4,677	4,357	4,989
Monks	23,328	15,535	16,157	23,639	23,615	3,243	1,177	1,229	4,307	3,046	26,572	16,712	17,386	27,946	26,662
Plaice	1,128	1,186	723	877	874	8,940	8,617	9,092	7,638	6,934	10,068	9,803	9,815	8,515	7,808
Saithe	3,280	2,791	2,991	3,853											

Chart 10. Value of landings (2006 prices) per Scottish based over 10 metres vessel, by vessel type 1990 to 2006

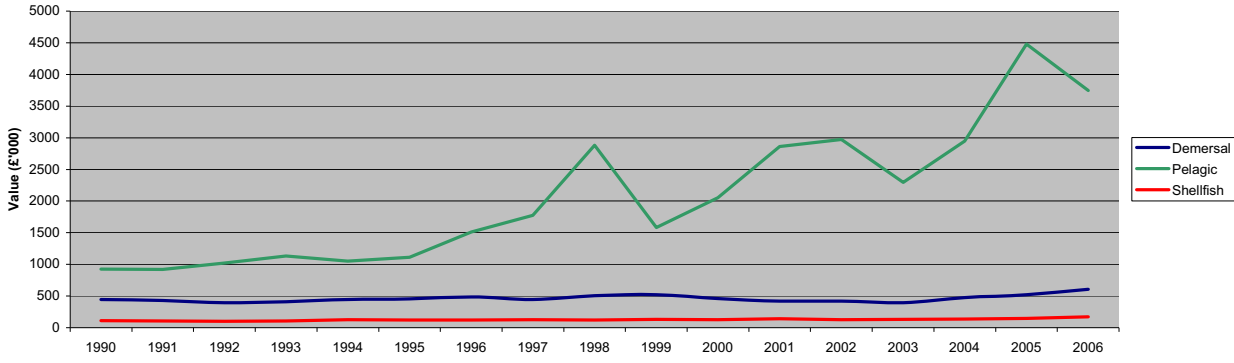


Table 28. Liveweight and value of landings abroad by Scottish based vessels, by country of landing, 2002 to 2006

	Tonnes					Value (£ thousand) (2)				
	2002	2003	2004	2005	2006	2002	2003	2004	2005	2006
EU: Denmark	35,057	16,973	33,129	60,730	45,244	9,260	3,938	3,408	8,517	8,170
Eire	1,923	6,016	2,052	359	5,580	718	1,205	1,127	1,015	2,465
France	1,484	361	178	309	206	348	73	51	120	419
Germany	178	167	725	7,995	6,032	187	208	245	1,913	1,455
Holland	9,367	7,447	8,972	7,645	6,934	12,493	12,029	13,936	13,080	13,141
Spain	3,105	2,683	3,464	3,317	2,176	7,684	6,122	8,200	8,096	6,030
Non-Faroes	6,009	3,374	5,297	9,103	4,281	1,153	299	351	574	569
Iceland	0	2,330	2,510	16,311	2,584	0	185	534	1,100	351
Norway	68,926	49,002	36,576	16,670	21,978	37,140	23,444	17,289	10,255	15,219
Other	404	-	373	769	1,741	1,919	-	754	976	2,315
Total	126,453	88,354	93,275	123,208	96,755	70,902	47,503	45,895	45,646	50,135

Table 29. Liveweight and value of landings from specified ICES areas by Scottish based vessels, by main (1) species, 2006

ICES area	Liveweight (tonnes)								Value (£'000) (2)											
	North sea IV a	North sea IV b	Area II a	Faroes V b	West Scotland VI a	West Scotland VI b	Irish sea VII a	Rest of area VII	Other	Total	North sea IV a	North sea IV b	Area II a	Faroes V b	West Scotland VI a	West Scotland VI b	Irish sea VII a	Rest of area VII	Other	Total
Cod	6,318	359	-	266	306	28	1	7	51	7,336	12,173	596	-	551	596	51	2	15	70	14,053
Dover sole	0	190	-	-	1	0	2	5	156	353	0	1,824	-	-	4	0	9	34	1,169	3,040
Haddock	29,032	2,515	-	102	4,901	438	5	9	0	37,003	33,682	3,108	-	137	5,859	582	5	9	0	43,382
Hake	653	48	-	0	1,185	3	0	620	13	2,523	883	99	-	0	4,237	3	0	2,609	54	7,888
Halibut	158	23	0	7	11	2	-	0	1	201	832	142	0	39	57	8	-	0	3	1,081
Lemon sole	603	475	-	7	15	1	0	8	3	1,112	1,529	1,217	-	23	29	2	0	19	11	2,832
Ling	1,337	9	1	136	855	122	0	43	1	2,503	1,601	10	1	233	966	145	0	48	1	3,004
Megrim	1,316	4	0	13	337	154	-	167	-	1,991	3,222	6	1	29	901	384	-	446	-	4,989
Monks	7,299	117	85	241	952	445	1	620	90	9,850	19,324	270	164	716	2,637	1,448	3	1,785	314	26,662
Plaice	760	4,655	-	14	43	-	1	3	569	6,045	651	6,527	-	20	35	-	1	5	571	7,808
Saithe	5,487	119	0	878	2,198	210	-	2	8	8,902	2,703	59	0	497	1,197	118	-	1	7	4,582
Turbot	24	135	-	0	4	0	0	2	13	179	193	1,429	-	0	24	4	1	13	116	1,780
Whiting	7,184	1,080	-	41	177	1	-	26	21	8,528	6,573	783	-	51	165	1	-	30	9	7,611
Other demersal	2,073	1,596	15	151	1,810	117	19	583	1,193	7,558	2,526	918	18	213	1,987	142	34	883	967	7,688
Total demersal	62,241	11,324	102	1,854	12,795	1,522	30	2,096	2,119	94,085	85,893	16,989	184	2,510	18,696	2,890	53	5,896	3,290	136,400
Blue whiting	76	-	-	2,564	57,927	996	-	10,543	-	72,106	7	-	-	209	5,099	74	-	935	-	6,325
Herring	46,943	977	11,973	-	13,154	-	-	0	-	73,047	11,119	199	5,217	-	3,087	-	-	0	-	19,623
Mackerel	25,826	16	-	-	52,847	-	-	24	-	78,713	19,083	12	-	-	44,780	-	-	20	-	63,896
Swordfish	-	-	-	-	-	-	-	-	825	825	-	-	-	-	-	-	-	-	1,311	1,311
Other pelagic	196	0	-	-	74	-	-	420	419	1,109	5	0	-	-	8	-	-	76	361	449
Total pelagic	73,042	993	11,973	2,564	124,002	996	-	10,988	1,244	225,800	30,214	212	5,217	209	52,974	74	-	1,031	1,671	91,602
Edible crabs	2,547	698	-	-	5,215	-	3	5	0	8,469	3,062	732	-	-	6,476	-	3	7	0	10,280
Lobsters	150	213	-	-	327	-	22	0	0	711	1,624	2,266	-	-	3,484	-	234	1	4	7,614
Nephrops	12,076	4,823	-	-	12,504	-	52	196	0	29,652	37,285	12,579	-	-	38,982	-	122	904	1	89,872
Queen scallops	16	0	-	-	1,002	-	2,005	2	0	3,024	9	0	-	-	628	-	1,477	1	0	2,115
Scallops	2,500	1,774	-	-	3,080	-	947	2,670	0	10,970	5,889	3,170	-	-	6,186	-	1,873	3,769	0	20,888
Squid	664	121	-	0	87	4	0	78	14	968	1,674	388	-	0	180	9	0	309	49	2,609
Velvet crabs	1,090	308	-	-	1,196	-	-	-	-	2,594	1,961	507	-	-	2,290	-	-	-	-	4,758
Other shellfish	1,932	174	-	-	242	10	480	23	84	2,945	990	186	-	-	487	5	599	30	60	2,357
Total shellfish	20,975	8,112	-	0	23,653	13	3,508	2,973	99	59,334	52,493	19,829	-	0	58,714	14	4,308	5,020	114	140,493
Total landings	156,258	20,429	12,075	4,418	160,449	2,531	3,538	16,057	3,461	379,218	168,600	37,030	5,401	2,720	130,384	2,978	4,362	11,947	5,075	368,495

(1) Total value over £1.0m

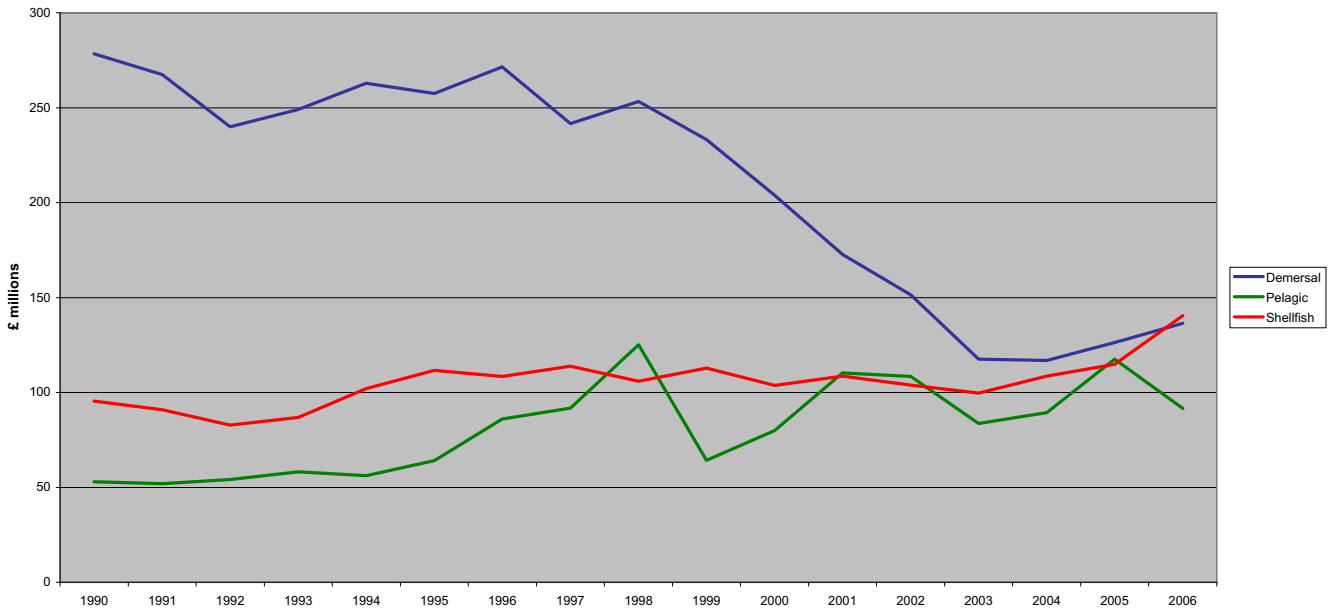
(2) When the Register of Buyers and Sellers (RBS) was introduced in September 2005, Sales Notes were not initially required for sales of shellfish and information on the value of such landings is consequently missing. The value has therefore been estimated for a number of landings, mostly shellfish, relating to voyages starting on or after 1 September 2005.

Table 30. Liveweight and value of landings by Scottish based vessels, by main (1) species and overall vessel length group (metres), 2006

	Liveweight (tonnes)										Value (£'000) (2)												
	Overall vessel length group										Total	Overall vessel length group										Total	
	<8	8-10	>10-12	>12-15	>15-18	>18-24	>24-30	>30-40	>40-50	over 50		<8	8-10	>10-12	>12-15	>15-18	>18-24	>24-30	>30-40	>40-50	over 50		
Cod	2	10	4	32	142	2,009	4,285	626	225	-	7,336	4	14	13	51	244	3,636	8,471	1,221	400	-	14,053	
Dover sole	-	1	0	0	1	3	2	54	291	-	353	-	4	0	2	105	17	14	440	2,457	-	3,040	
Haddock	-	13	2	175	621	11,918	19,300	4,891	84	-	37,003	-	11	2	157	615	13,457	22,888	6,149	103	-	43,382	
Hake	-	1	0	8	39	305	1,077	1,075	16	-	2,523	-	2	0	11	59	388	3,049	4,342	36	-	7,888	
Halibut	-	1	0	2	6	85	92	14	3	-	201	-	3	1	8	36	479	467	73	15	-	1,081	
Lemon sole	-	3	0	11	38	466	316	134	142	-	1,112	-	8	0	21	71	1,066	852	386	429	-	2,832	
Ling	0	1	2	3	15	330	1,592	498	61	-	2,503	0	1	2	4	20	379	1,932	596	70	-	3,004	
Megrimms	-	3	0	7	92	953	616	296	23	-	1,991	-	7	0	11	222	2,415	1,492	780	63	-	4,989	
Monks	-	9	4	77	332	3,451	3,713	2,008	257	-	9,850	-	20	9	191	812	8,910	9,833	6,197	689	-	26,662	
Plaice	-	16	1	17	70	446	382	1,305	3,808	-	6,045	-	13	1	12	51	371	345	1,729	5,285	-	7,808	
Saithe	7	2	2	22	68	1,056	4,879	2,161	705	-	8,902	7	2	2	10	34	494	2,454	1,182	397	-	4,582	
Turbot	-	1	0	1	2	10	15	34	116	-	179	-	4	0	4	15	71	124	252	1,309	-	1,780	
Whiting	-	44	1	146	412	4,060	3,534	241	90	-	8,528	-	22	1	85	274	3,343	3,558	239	90	-	7,611	
Other demersal	6	48	32	97	246	1,146	1,838	1,698	1,487	960	7,558	29	81	38	131	308	1,345	2,205	1,991	1,351	209	7,688	
Total demersal	15	152	50	599	2,084	26,239	41,642	15,036	7,307	960	94,085	40	191	70	697	2,865	36,370	57,684	25,578	12,695	209	136,400	
Blue whiting	-	-	-	-	-	-	-	-	1	72,105	72,106	-	-	-	-	-	-	-	-	0	6,325	6,325	
Herring	-	0	-	-	3	0	-	-	-	3,140	69,904	-	0	-	-	2	0	-	-	716	18,905	19,623	
Mackerel	233	194	-	1	0	2	2	2	2,125	76,154	78,713	135	107	-	1	0	2	2	2	1,570	62,078	63,896	
Swordfish	-	-	-	-	-	-	-	-	153	672	825	-	-	-	-	-	-	-	243	1,067	-	1,311	
Other pelagic	-	0	0	0	1	9	6	83	88	922	1,109	-	0	0	1	2	2	4	163	144	133	449	
Total pelagic	233	194	0	1	4	10	8	238	6,026	219,085	225,800	135	107	0	1	4	4	6	407	3,497	87,440	91,602	
Edible crabs	604	3,083	1,446	620	1,622	1,009	4	19	63	-	8,469	656	3,515	1,659	806	2,193	1,403	5	10	32	-	10,280	
Lobsters	227	289	120	43	29	0	-	0	3	-	711	2,356	3,140	1,300	463	328	4	-	2	21	-	7,614	
Nephrops	328	3,348	2,401	3,923	7,419	10,935	1,188	105	6	-	29,652	2,034	13,575	8,763	9,557	17,819	33,589	4,087	430	17	-	89,872	
Queen scallops	1	1	15	5	538	1,774	689	-	0	-	3,024	0	0	10	4	378	1,414	308	-	0	-	2,115	
Scallops	186	310	518	517	2,780	2,841	1,674	2,145	0	-	10,970	355	959	1,791	1,199	5,189	5,412	2,789	3,194	0	-	20,888	
Squid	0	92	10	84	99	320	249	106	8	-	968	0	284	28	274	337	728	582	356	19	-	2,609	
Velvet crabs	1,095	1,066	371	45	17	0	-	-	-	-	2,594	1,995	1,949	689	90	36	0	-	-	-	-	-	4,758
Other shellfish	203	575	499	1,404	14	13	1	121	115	-	2,945	223	653	695	582	42	9	1	90	61	-	2,357	
Total shellfish	2,643	8,764	5,380	6,641	12,517	16,894	3,804	2,496	195	-	59,334	7,619	24,075	14,935	12,976	26,323	42,560	7,771	4,083	151	-	140,493	
Total landings	2,891	9,110	5,430	7,242	14,605	43,143	45,454	17,770	13,529	220,046	379,218	7,794	24,374	15,005	13,674	29,191	78,935	65,461	30,068	16,344	87,649	368,495	

(1) Total value over £1.0m

Chart 11. Value (2) of landings at 2006 prices by Scottish based vessels by species type, 1990 to 2006



(2) When the Register of Buyers and Sellers (RBS) was introduced in September 2005, Sales Notes were not initially required for sales of shellfish and information on the value of such landings is consequently missing. The value has therefore been estimated for a number of landings, mostly shellfish, relating to voyages starting on or after 1 September 2005.

Table 31. Liveweight and value of landings by Scottish based vessels, by main (1) species and gear 2006

	Liveweight (tonnes)									Value (£'000) (3)								
	Demersal trawl (2)	Demersal seine	Demersal twin trawl	Lines	Gill nets	Beam trawl	Other demersal	Demersal total	Demersal trawl (2)	Demersal seine	Demersal twin trawl	Lines	Gill nets	Beam trawl	Other demersal	Demersal total		
Cod	5,574	771	830	5	7	125	12	7,324	10,762	1,499	1,525	10	13	204	15	14,027		
Dogfish	316	68	59	61	144	1	0	648	387	62	92	56	47	1	0	645		
Dover sole	4	0	2	-	-	340	1	346	124	0	19	-	-	2,853	3	2,999		
Haddock	27,883	6,670	2,352	2	1	4	37	36,948	33,193	7,506	2,578	2	1	5	38	43,324		
Hake	1,077	187	85	1,129	17	6	20	2,523	2,522	260	111	4,872	67	14	42	7,887		
Halibut	153	20	25	-	0	0	2	201	824	101	137	-	2	2	15	1,081		
Lemon sole	727	127	72	-	0	177	8	1,110	1,830	299	158	-	0	527	14	2,828		
Ling	1,668	26	285	480	31	9	2	2,500	2,041	29	333	561	26	8	2	3,001		
Megrimms	1,488	139	284	-	2	14	64	1,991	3,657	423	663	-	3	46	196	4,989		
Monks	6,955	191	1,434	1	1,075	86	63	9,805	18,276	476	3,798	2	3,658	238	138	26,586		
Plaice	1,032	196	225	-	1	4,581	9	6,044	1,038	180	258	-	0	6,324	7	7,807		
Pollack	342	14	20	13	1	0	2	392	481	20	28	19	1	0	2	552		
Saithe	7,741	333	797	16	1	2	1	8,891	4,016	158	386	9	0	1	1	4,571		
Skates & rays	550	57	62	2	81	43	17	813	509	54	50	3	116	43	21	795		
Turbot	29	3	7	-	2	135	2	177	225	23	55	-	9	1,448	11	1,772		
Whiting	6,015	1,556	805	-	2	37	110	8,524	5,490	1,407	621	-	1	20	64	7,605		
Witches	533	37	117	-	0	1	7	695	696	51	141	-	0	1	12	900		
Other demersal	2,625	197	146	706	224	790	24	4,712	2,470	374	192	464	243	763	41	4,548		
Total demersal	64,712	10,591	7,606	2,416	1,588	6,350	381	93,645	88,543	12,921	11,145	5,999	4,189	12,498	622	135,916		
Other species	16,820	81	89	1,406	112	229	1,474	20,211	5,899	250	155	1,853	160	172	1,616	10,106		

	Liveweight (tonnes)			Value (£'000) (3)		
	Pelagic purse seine	Pelagic trawl	Pelagic total	Pelagic purse seine	Pelagic trawl	Pelagic total
Blue whiting	-	59,784	59,784	-	5,256	5,256
Herring	420	71,304	71,724	105	19,211	19,316
Mackerel	-	75,624	75,624	-	61,610	61,610
Other pelagic	6	922	929	2	133	135
Total pelagic	427	207,634	208,061	107	86,211	86,317
Other species	20	303	323	12	229	241

	Liveweight (tonnes)						Value (£'000) (3)					
	Creel fishing	Nephrop trawl (2)	Dredging	Hand shellfishing	Other methods	Shellfish total	Creel fishing	Nephrop trawl (2)	Dredging	Hand shellfishing	Other methods	Shellfish total
Edible crabs	8,364	-	1	3	-	8,368	10,212	-	1	3	-	10,217
Lobsters	706	-	0	0	-	706	7,569	-	1	6	-	7,575
Nephrops	1,874	27,189	4	11	-	29,078	13,313	75,049	12	46	-	88,420
Scallops	0	-	2,481	1	-	2,482	100	-	20,018	713	-	20,832
Queen scallops	47	-	10,542	356	-	10,945	0	-	1,729	1	-	1,730
Velvet crabs	2,587	-	0	4	-	2,591	4,745	-	1	8	-	4,754
Whelks	617	-	3	0	-	620	500	-	0	2	-	502
Other shellfish	374	-	1,490	130	55	2,048	504	-	798	246	72	1,620
Total shellfish	14,568	27,189	14,522	505	55	56,839	36,945	75,049	22,562	1,023	72	135,651
Other species	48	-	91	1	-	140	84	-	179	0	-	264

(1) Total value over £0.5m

(2) Bottom trawl gears catching demersal species have been included as demersal trawl; those catching nephrops have been included as nephrop trawl.

(3) When the Register of Buyers and Sellers (RBS) was introduced in September 2005, Sales Notes were not initially required for sales of shellfish and information on the value of such landings is consequently missing. The value has therefore been estimated for a number of landings, mostly shellfish, relating to voyages starting on or after 1 September 2005.

Chart 12. Liveweight landings by Scottish based vessels, by quarter, 2006

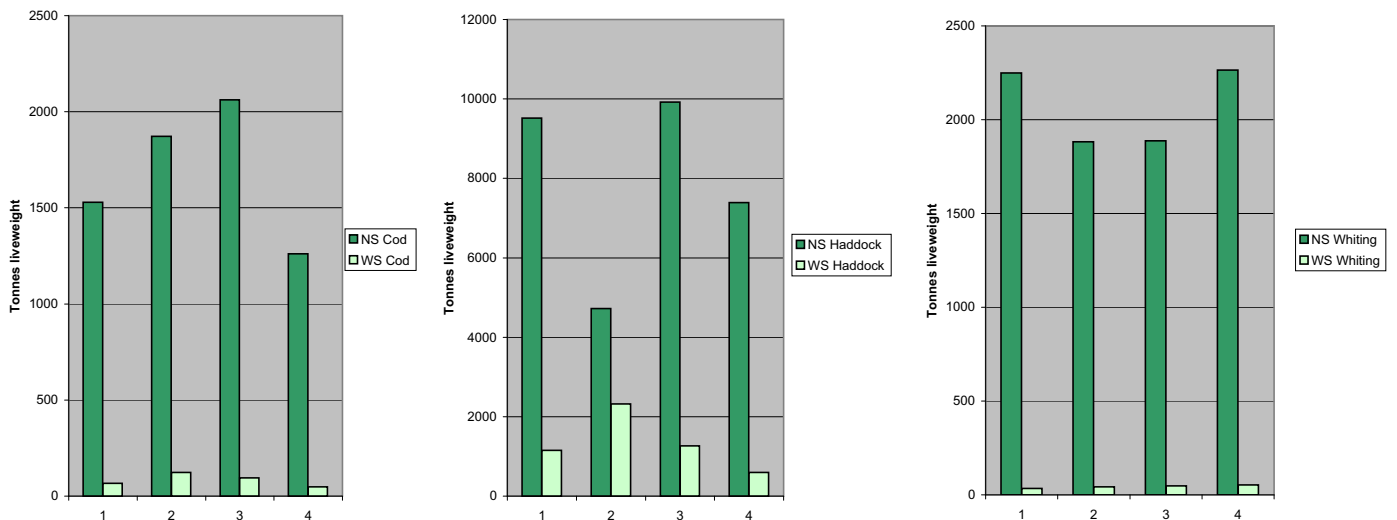
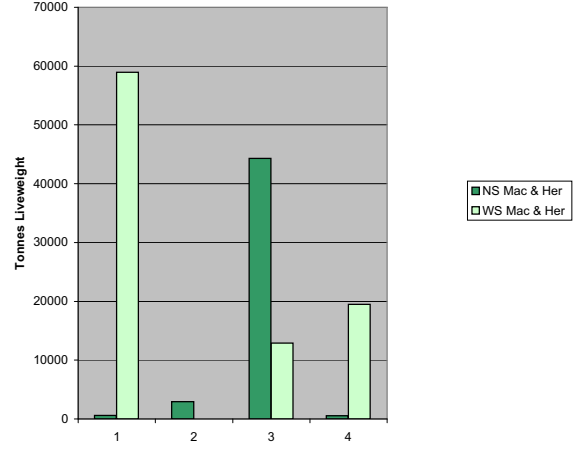
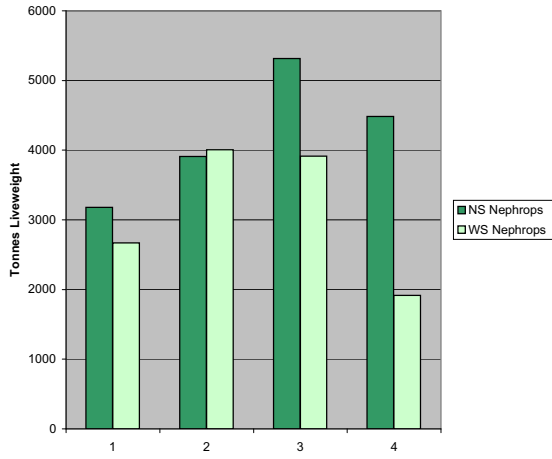


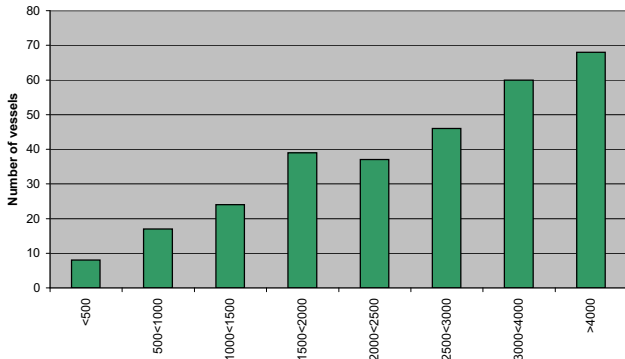
Chart 12. continued



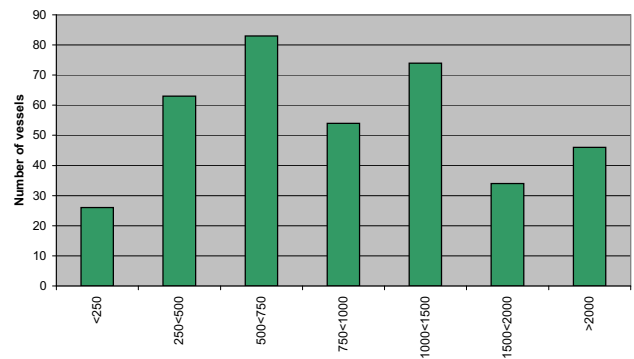
NS:North Sea WS:West of Scotland

Chart 13. Average value of landings per day at sea by Scottish based over 10m based vessels, by vessel type, 2006

Demersal Vessels



Shellfish Vessels



Pelagic Vessels

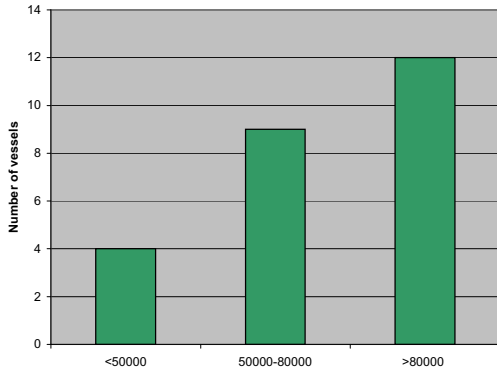
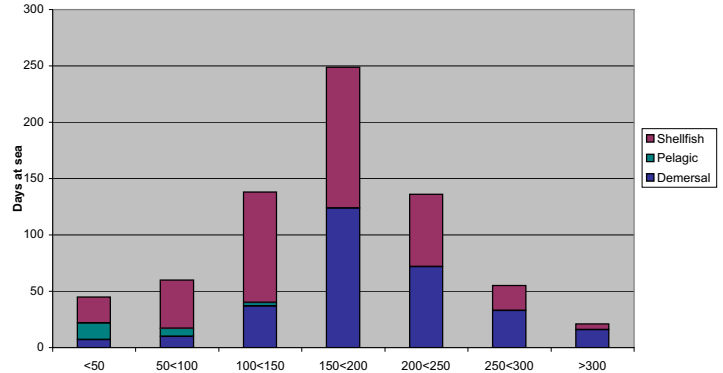


Chart 14. Effort days(1) by Scottish based over 10m vessels by vessel type, 2006



(1) £ per day. A day is defined as a continuous period of 24 hours beginning at the time a vessel leaves port

Table 32. Effort days (1) by Scottish based over 10 metres vessels by Ices area, 2006

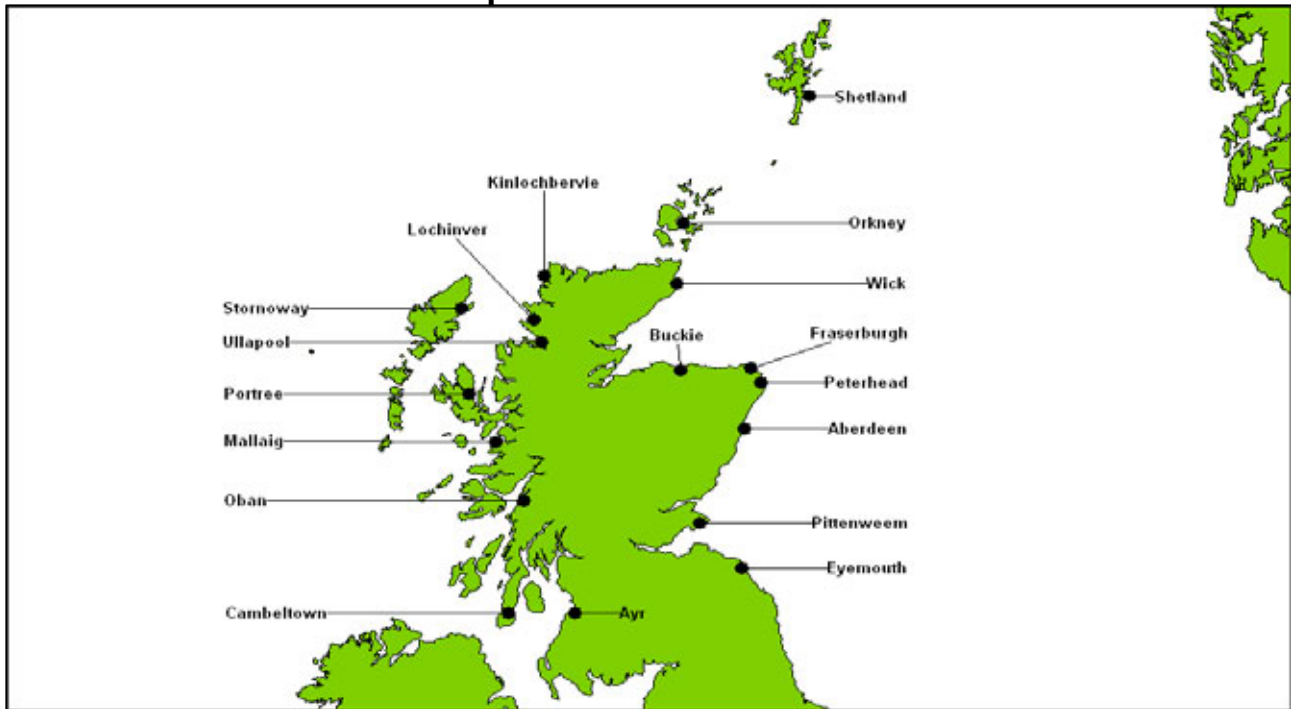
ICES AREA	Demersal	Pelagic	Shellfish
IVb, Central North Sea	7,735	22	6,482
Vb, Faroes	521	18	-
VIIj, Great Sole	890	-	1
VIIa, Irish Sea	110	-	2,006
VIIh, Little Sole	260	-	168
IVa, Northern North Sea	32,580	443	14,071
VIIc, Porcupine Bank	469	61	-
VIb, Rockall	1,019	7	-
IVc, Southern North Sea	365	6	-
VIIk, West Great Sole	961	-	-
VIIb, West Ireland	231	-	-
VIa, West Scotland	9,913	586	35,791
VIIe, Western English Channel	294	6	693
Other	1,843	70	556
Total	57,190	1,218	59,767

Table 33. Effort days (1) by Scottish based over 10 metres vessels by length group, 2006

Length group	Demersal	Pelagic	Shellfish
>10<15	3,513	-	35,561
15<20	14,621	6	19,912
20<25	17,619	-	2,209
25<30	11,508	-	1,288
30<35	3,525	-	797
35 and over	6,404	1,212	-
Total	57,190	1,218	59,767

(1) Source : UK effort reference database : Effort figures include time spent by a vessel in travelling to the fishing ground. This is the basis reported to the EU.

Annex 1 - Port districts and ports in Scotland



Aberdeen

Aberdeen
Arbroath
Catterline
Gourdoun
Johnshaven
Montrose
Stonehaven

Ayr

Annan
Ayr
Ballantrae
Cumbraes
Drummore
Dunure
Girvan
Kirkcudbright
Largs & Greenock
Maidens
Portpatrick
Stranraer
Troon & Saltcoats
Whithorn

Buckie

Buckie
Burghead
Findochty
Hopeman
Lossiemouth
Portknockie

Campbeltown

Ardrishaig
Arran
Bruichladdich
Bute
Campbeltown
Carradale
Colonsay
Crinan
Gigha
Islay
Jura
Port Askaig
Port Ellen
Tarbert
Tayinloan
Tayvallich
West Loch Tarbert

Eyemouth

Burnmouth
Cove
Dunbar
Eyemouth
Granton
North Berwick
Port Seton
St Abbs

Fraserburgh

Fraserburgh
Gardenstown
Macduff
Pennan
Portsoy
Rosehearty
Sandhaven & Pitullie
Whitehills

Kinlochbervie

Eriboll
Kinlochbervie
Scourie

Lochinver

Culkein/Drumbeg
Kylesku
Lochinver

Mallaig

Ardnamurchan
Arisaig
Corpach
Glenuig
Mallaig
Salen

Oban

Coll
Fort William
Loch Buie (Mull)
Loch Scridain (Mull)
Luig
Oban
Tiree
Tobermory (Mull)

Orkney

Hoy
Kirkwall
Rousay
S Ronaldsay
Sanday
Stromness
Stronsay
Tingwall
Westray

Peterhead

Boddam
Peterhead
Port Errol

Pittenweem

Anstruther
Burntisland
Crail
Methil & Leven
Pittenweem
St Andrews
St Monans

Portree

Bracadale
Broadford
Dunvegan
Kyle
Portree
Sleat
Snizort
Strathaird
Torridon

Shetland

Central Mainland
Lerwick
Northmavine
S Mainland & Fair Isle
Scalloway
Skerries
West Mainland
Whalsay
Yell, Fetlar & Unst

Stornoway

Barra
Benbecula
Bernera (Lewis)
Berneray (N Uist)
Grimsay
Lochs
North Harris
North Uist
Portnaguran & Ness
Scalpay
South Harris
South Uist & Eriskay
Stornoway

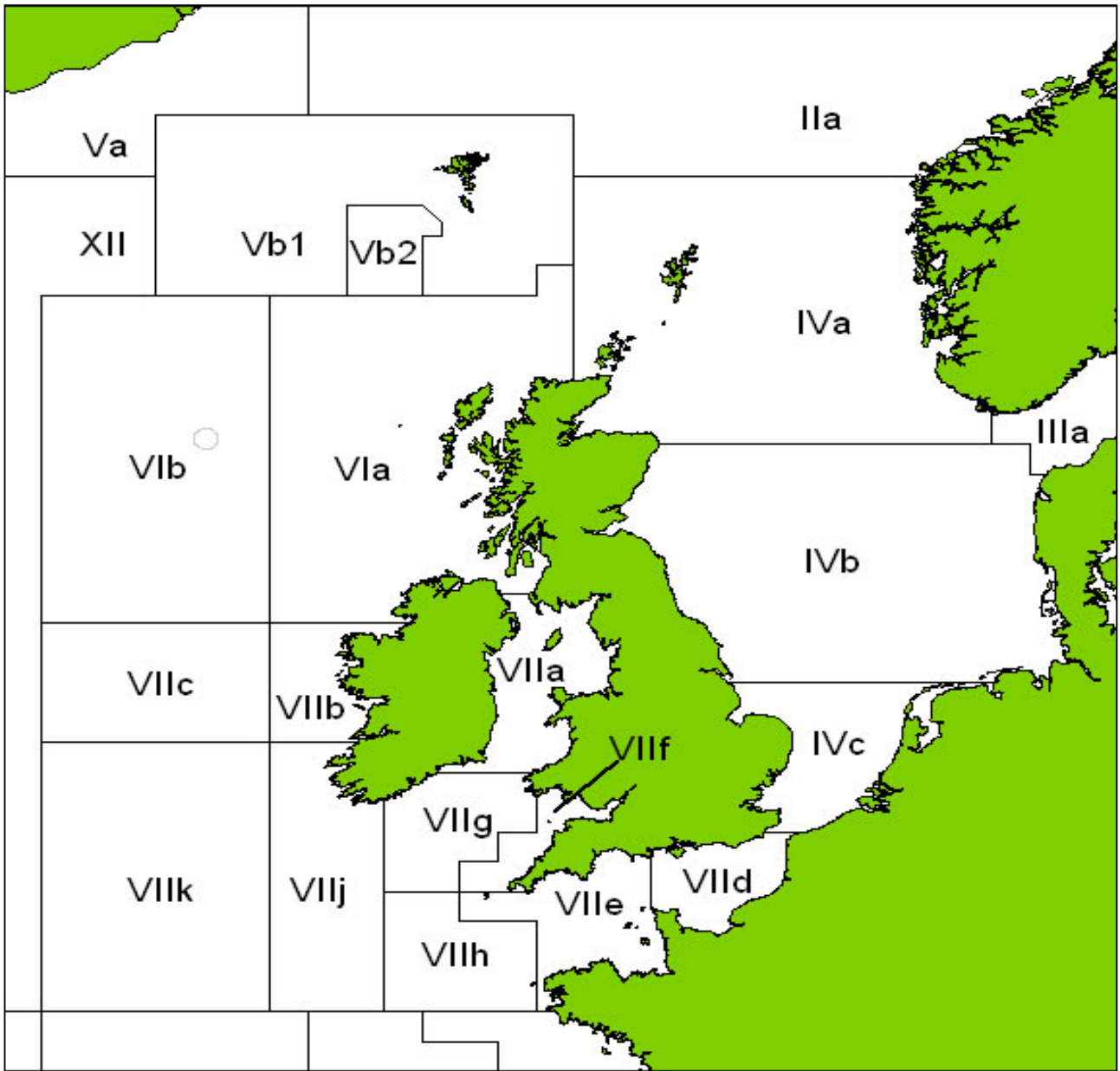
Ullapool

Achiltibuie
Aultbea
Gairloch
Ullapool

Wick

Avoch
Brora
Dunbeath
Helmsdale
Invergordon
Inverness
John O'Groats
Keiss
Lybster
Portmahomack
Portskerra
Scrabster
Wick

Annex 2 - ICES Fishing Areas around the UK Coastline



SCOTTISH GOVERNMENT STATISTICIAN GROUP

OUR AIM

To provide relevant and reliable information, analysis and advice that meet the needs of government, business and the people of Scotland.

OBJECTIVES

1. To produce statistics and analysis relevant to user needs by
 - Developing our understanding of customer requirements to ensure statistics are kept relevant and analysis is well targeted;
 - Developing the range of statistics and analysis we produce;
 - Where practicable improving timeliness;
 - Providing more statistics disaggregated by age, gender and ethnicity;
 - Developing more data for small areas through the Neighbourhood Statistics project;
 - Contributing to production of comparable statistics across the UK and internationally.
2. To ensure effective use of our statistics by
 - Contributing more directly to policy processes inside and where possible outside government;
 - Improving access to and presentation of data and analysis;
 - Improving the advice provided on statistics.
3. To work effectively with users and providers by
 - Maintaining arrangements to consult and involve users and providers;
 - Involving users and providers in planning developments in outputs and processes;
 - Minimising the burden on data providers through dropping or streamlining collections as appropriate, to ensure the benefits of the information justify the costs of collection.
4. To develop the quality of statistics by
 - Assuring and improving quality as an integral part of data collection and analysis and through regular reviews in line with National Statistics quality strategy;
 - Developing statistical methods, systems and classifications;
 - Working with the rest of the Government Statistical Service to develop joint approaches/solutions where appropriate.
5. To assure the integrity of statistics by
 - Maintaining and promoting integrity through implementation of the National Statistics Code of Practice and related protocols;
 - Safeguarding the confidentiality of data subjects.
6. To ensure the efficient and effective delivery of statistics products and services by
 - Making best use of all sources including administrative sources;
 - Working with other analysts to maximise the contribution of our own and other analysts' work;
 - Ensuring value for money;
 - Making best use of Information and Communications Technology;
 - Ensuring effective communication within the Statistician Group.
7. To develop our workforce and competences
 - Ensuring recruitment of staff with the necessary skills and potential;
 - Ensuring development of expertise amongst existing staff;
 - Promoting and upholding the standards of the statistics profession.

This is a National Statistics publication

"This is a National Statistics publication. It has been produced to high professional standards set out in the National Statistics Code of Practice Protocol - see www.statistics.gov.uk/about_ns/cop/default.asp

These statistics undergo regular quality assurance reviews to ensure that they meet customer needs. They are produced free from any political interference."

Details of pre-release access will be provided in the Scottish Government Statistics Website under 'Forthcoming Releases'.

Correspondence and enquiries

Enquiries on Scottish Sea Fisheries Statistics 2006 should be addressed to:

Patrick McDonald
Sea Fisheries Division
Marine Directorate
Room 515, Pentland House
Edinburgh EH14 1TY
Telephone: 0131-244 6441; Fax: 0131-244 6288
e-mail: fisheriesstatistics@scotland.gsi.gov.uk

General enquiries on Scottish Government statistics can be addressed to:

Ryan Stewart
Office of the Chief Statistician
Scottish Government
3 Floor West Rear, St Andrews House
EDINBURGH EH1 3DG
Telephone: (0131) 244 0442; Fax: (0131) 244 0335
e-mail: statistics.enquiries@scotland.gsi.gov.uk

Advice on specific areas of Scottish Government statistical work can be obtained from staff at the telephone numbers given below:

Scottish Government Statistics contacts

Schools – qualifications	(0131) 244 0315
Schools – pupils and teachers	(0131) 244 1689
Further and Higher Education	(0141) 242 0273
The Economy	(0131) 244 2234
Labour market	(0141) 242 5446
Business	(0141) 242 5446
Income, Tax and Benefits	(0131) 244 2583
Local government finance	(0131) 244 7033
Environment	(0131) 244 0445
Planning	(0131) 244 0439
Equality	(0131) 244 0324
Housing	(0131) 244 7236
Transport	(0131) 244 7255
Health	(0131) 244 3432
Community Care	(0131) 244 3777
Social Justice	(0131) 244 0442
Scottish Executive personnel	(0131) 244 3926
Agricultural census and labour force	(0131) 244 6150
Fisheries	(0131) 244 6441
Courts and law	(0131) 244 2227
Recorded crime	(0131) 244 2635
Prisons	(0131) 244 2147

Other contacts for Scottish statistics

Forestry Commission	(0131) 314 6337
The Scottish Funding Councils for Higher and Further Education	(0131) 313 6575
General Register Office for Scotland - Vital statistics and publications - Population statistics, census statistics or digital boundary products	(0131) 314 4243 (0131) 314 4254

For **general enquiries about National Statistics** in the United Kingdom Government contact the National Statistics Public Enquiry Service on

020 7533 5888
minicom: 01633 812399
Email: info@statistics.gov.uk
Fax: 01633 652747
Letters: room DG/18, 1 Drummond Gate,
LONDON SW1V 2QQ

You can also find National Statistics on the internet - go to **www.statistics.gov.uk**

If you would like to be consulted about new or existing statistical collections or receive notification of forthcoming statistical publications, please register your interest on the Scottish Government ScotStat website at **www.scotland.gov.uk/scotstat**

Current contact points, e-mail addresses and the publications listed below as well as a range of other statistical publications can be found on the Scottish Government Web site at **www.scotland.gov.uk/stats**

Further information on the General Register Office for Scotland is available on the website **www.gro-scotland.gov.uk**

Most recent Statistical Publications relating Freshwater Fisheries and Aquaculture

Ref no.	Title	Last published	Price
	Scottish Salmon and Sea Trout Catches 2005	October 2006	
	Scottish Shellfish Farms Annual Production Survey 2006	March 2007	
	Scottish Fish Farms Annual Production Survey 2005	November 2006	

Additional copies of these publications may be purchased from **Scottish Government Publication Sales, Blackwell's Bookshop, 53 South Bridge, Edinburgh, EH1 1YS**, Telephone: 0131 622 8283 or 0131 622 8258, Fax: 0131 557 8149. Cheques should be made payable to 'Blackwell's Bookshop'.

Complaints and suggestions

If you are not satisfied with our service, please write to the Chief Statistician, Mr Rob Wishart, 3R02, St Andrews House, Edinburgh, EH1 3DG, Telephone: (0131) 244 0302, e-mail rob.wishart@scotland.gsi.gov.uk. We also welcome any comments or suggestions that would help us to improve our standards of service.

ISBN 978 0 7559 6745 2

Price £12

Crown Copyright

Brief extracts from the Crown Copyright material in this publication may be reproduced provided the source is fully acknowledged.

© Crown copyright 2007

This document is also available on the Scottish Executive website:
www.scotland.gov.uk

RR Donnelley B53047 09/07

Further copies are available from
Blackwell's Bookshop
53 South Bridge
Edinburgh
EH1 1YS

Telephone orders and enquiries
0131 622 8283 or 0131 622 8258

Fax orders
0131 557 8149

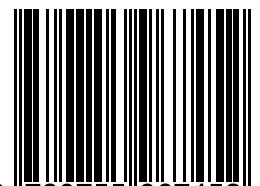
Email orders
business.edinburgh@blackwell.co.uk

Fish photograph on cover courtesy of:
Tom McInnes, FRS Marine Laboratory

RR Donnelley B53047 09/07

£12.00

ISBN 978-0-7559-6745-2



9 780755 967452