

**Scottish Sea  
Fisheries  
Statistics  
2005**



**natural  
scotland**  
SCOTTISH EXECUTIVE

## **Scottish Sea Fisheries** Statistics 2005

© Crown copyright 2006

ISBN: 0-7559-6245-1

Scottish Executive  
St Andrew's House  
Edinburgh  
EH1 3DG

Produced for the Scottish Executive by Astron B48447 09/06

Published by the Scottish Executive, September, 2006

Further copies are available from  
Blackwell's Bookshop  
53 South Bridge  
Edinburgh  
EH1 1YS

100% of this document is printed on recycled paper and is 100% recyclable.

## Scottish Sea Fisheries Statistics, 2005

<b>Contents</b>	<b>Page</b>
<b>Vessels</b>	
Overview of the Scottish Fishing Fleet	1-4
Table 1. Active Scottish based vessels, power, by overall length group, 31st December 1995 to 2005	5
Chart 1. Landings by Scottish based vessels, 1990 to 2005	5
Chart 2. Active Scottish based vessels, 1990 to 2005	5
Table 2. Active Scottish based vessels, tonnage and power by overall length group and age group, 31st December 2005	6
Chart 3. Scottish based vessels by type, 1989 to 2005	6
Chart 4. Scottish based vessels, average length for demersal, pelagic and shellfish vessels, 1991 to 2005	6
Table 3. Active Scottish based vessels: number, tonnage and power, by overall length group, 31st December 2005	7
Table 4. Active Scottish based vessels, by main fishing method, 31st December 1995 to 2005	7
Table 5. Active Scottish based vessels, by main fishing method and overall length group, 31st December 2005	7
Table 6. Active Scottish based vessels by base district and overall length group, 31st December 2005	8
Table 7. Changes to the Scottish based over 10 metres fleet , 31st December 2004 to 2005	8
Table 8. Scottish based sea fishing licences by category, 31st December 2003 to 2005	8
Table 9. Scottish based sea fishing licences, vessel capacity units by type of licence, 31st December 2005	8
Table 10. Scottish based over 10 metres sea fishing licences by category, 31st December 2004 to 2005	8
<b>Employment</b>	
Table 11. Employment in sea fishing, and Scottish labour force, 1995 to 2005	9
Table 12. Value of sea fish landings into Scotland by Scottish based vessels; fishermen employed, by region, 2005	9
Table 13. Number of fishermen employed on Scottish based vessels, 2001 to 2005	9
Table 14. Number of fishermen employed by district and employment status, 2005	9
Chart 5. Number of fishermen employed on Scottish based vessels, 1965 to 2005	9
<b>Landings</b>	
Overview of Catches and Landings	10-15
Map Figure 1: Volume landed by district, 2005; Figure 2: Value landed by district, 2005	16
Table 15. Total Allowable Catches, UK quotas and liveweight landed by UK vessels, 2001 to 2005	17-19
Chart 6. UK percentage uptake of main quota stocks, 2005	19
Table 16. Fixed quota units by sea area and country, 1st January, 2006	19
Table 17. Live weight and value of landings, by species type, 2001 to 2005	20
Table 18. Voyages and landings by Scottish based vessels by landing district, 2004 and 2005	20
Table 19. Liveweight and value of landings into the UK by UK vessels, by main species and country of landing, 2001 to 2005	21
Table 20. Liveweight and value of landings into Scotland by UK vessels, by main species, 2001 to 2005	21
Table 21. Liveweight and value of landings into Scottish ports by UK vessels, by landing district and species type, 2001 to 2005	22
Table 22. Disposal of sea fish landed into Scotland by UK vessels, 2001 to 2005	22
Table 23. Liveweight and value of landings into Scotland by UK vessels, by landing district and main species, 2005	23,24
Chart 7. Average prices of landings into Scotland by UK vessels, by species type, 1988 to 2005	23
Chart 8. Liveweight landings into Scotland by UK vessels by species type, 1965 to 2005	24
Chart 9. Average prices of landings into Scotland, by species type and month, 2005	25
Table 24. Liveweight and value of landings into Scotland by foreign vessels,by main species, 2001 to 2005	25
Table 25. Liveweight and value of landings into Scotland by foreign vessels,by country of origin, 2001 to 2005	25
Table 26. Liveweight and value of landings into Scotland by foreign vessels,by landing district, 2001 to 2005	25
Table 27. Liveweight and value of landings by Scottish based vessels, by main species, 2001 to 2005	26
Chart 10. Value of landings at 2005 prices per Scottish based over 10 metres vessel, by vessel type, 1989 to 2005	27
Table 28. Liveweight and value of landings abroad by Scottish based vessels, by country of landing, 2001 to 2005	27
Table 29. Liveweight and value of landings from specified ICES areas by Scottish based vessels, by main species, 2005	27
Table 30. Liveweight and value of landings by Scottish based vessels, by main species and overall vessel length group, 2005	28
Chart 11. Value of landings at 2005 prices by Scottish based vessels by species type, 1989 to 2005	28
Table 31. Liveweight and value of landings by Scottish based vessels, by main species and gear, 2005	29
Chart 12. Liveweight landings by Scottish based vessels by quarter, 2005	29,30
Chart 13. Average value of landings per day at sea by Scottish based over 10 metres vessels by vessel type, 2005	30
Chart 14. Days at sea by Scottish based over 10 metres vessels by vessel type, 2005	30
Table 32. Days fished by Scottish based over 10 metres vessels by Ices area, 2005	30
Table 33. Days fished by Scottish based over 10 metres vessels by length group, 2005	30
Annex 1 Map of port districts and ports in Scotland	31
Annex 2 ICES fishing areas around the UK coastline	32



## **1. Overview of the Scottish Fishing Fleet**

### **1.1 The regulation of the UK Fleet**

The structure and capacity of the UK and Scottish fishing fleets has, since 1983, been dictated primarily by the EU Common Fisheries Policy (CFP). Between 1997 and 2002, fleet structure was managed within the CFP through the fourth Multi Annual Guidance Programme (MAGP) designed to tailor fleet capacity to available fish stocks across the EU. Under this programme the UK fishing fleet was divided into eight segments, defined primarily by broad fishing method<sup>1</sup>, and capacity limits or effort reduction targets set for each segment. MAGP IV has now ended and has been replaced by global effort ceilings at member state level controlled through a system of entry/exit controls. In simple terms, a vessel can only enter the fleet when equivalent capacity has exited the fleet.

At a UK level, restrictive licensing has been the main Government instrument to bring the activities of the UK fishing fleet into line with MAGP and UK aims on fleet and catch management. Aside from a few limited exceptions, all vessels engaged in commercial sea fishing are required to hold a licence issued by UK Fisheries Departments. There are a finite number of licences in existence and no new licences are made available. This places a ceiling on the total number of vessels in the UK fishing fleet. In order to licence new vessels, fishermen must acquire one or more existing licences from other previously licensed vessels. Capacity penalties are applied when licences are transferred, or aggregated to form a larger licence unit, and these, together with the restricted number of licences on issue, form the mechanism for ensuring reductions in the capacity of the UK fleet to meet with EU and UK objectives.

The UK restrictive licensing controls, in combination with successive decommissioning schemes (1994-1997; 2001-2002 and 2003-04), explain many of the fleet trends in recent years and the figures presented here are interpreted in this context where appropriate.

### **1.2 Fleet size**

2005 saw a continuation of recent changes to the Scottish fleet, either directly or indirectly prompted by measures designed to conserve vulnerable whitefish stocks, particularly cod. The most important of these measures in recent years have been the two successive decommissioning schemes in 2001-2002 and 2003-04, under which 165 vessels were removed from the demersal fleet.

---

<sup>1</sup> Pelagic Gears; Beam trawl; Demersal seines and nephrops; Lines & Nets; Shellfish-Mobile; Shellfish-Fixed; Distant Water; and vessels under 10 metres.

There were 2,376 active fishing vessels based in Scotland at the end of 2005, a net reduction of 18 since 2004 (Table 1). There were reductions in the number of active vessels in 10 out of 18 districts (Table I below) with the losses mainly in the northern and north-western areas including the isles. The number of active vessels did increase in seven districts with the largest increases being at Pittenweem (+8 vessels) and Ayr (+6 vessels).

*Table I: Changes in numbers of active Scottish based vessels 2004-05, by district.*

District	Number of active vessels		Change
	2004	2005	
<i>Pittenweem</i>	111	119	8
<i>Ayr</i>	159	165	6
<i>Fraserburgh</i>	219	223	4
<i>Aberdeen</i>	91	94	3
<i>Eyemouth</i>	108	110	2
<i>Ullapool</i>	71	73	2
<i>Portree</i>	148	149	1
<i>Campbeltown</i>	182	182	0
<i>Peterhead</i>	102	101	-1
<i>Orkney</i>	171	170	-1
<i>Lochinver</i>	19	18	-1
<i>Mallaig</i>	93	92	-1
<i>Oban</i>	143	142	-1
<i>Kinlochbervie</i>	30	26	-4
<i>Wick</i>	128	123	-5
<i>Shetland</i>	202	197	-5
<i>Buckie</i>	82	73	-9
<i>Stornoway</i>	335	319	-16
<b>Total</b>	<b>2,394</b>	<b>2,376</b>	<b>-18</b>

**Source:** Table 6 and Scottish Fisheries Statistics 2004

The under 10 metre segment of the fleet decreased by 10 vessels to 1,652 over the year to December 2005 and has been relatively stable at around 1,600 vessels since 1995 (Table 1). The over 10 metres fleet decreased by 8 vessels in 2005 continuing a long term decline. This segment is now 38 per cent smaller than in 1995, a trend which has affected the demersal (down 42 per cent), pelagic (down 49 per cent) and shellfish (down 33 per cent) sectors.

## **1.3 Vessel Capacity**

### **1.3.1 Overall length**

The average overall length of vessels in the over 10m fleet was 19.14 metres in 2005, a shortening of one centimetre on the 2004 figure. This indicates that the declining trend in vessel length observed since 2000 may have slowed. Since 2000, the average length within the over 10m segment has fallen by 90 cm and is now at the lowest length in the decade (Table 1).

### **1.3.2 Engine Power**

Engine power statistics in earlier years have been underestimated to an unknown degree, due to the inclusion of vessels with engines operating at a higher power than permitted on their licences. In November 1999, in response to this problem, Fisheries Departments introduced special (concessionary) licensing arrangements and a timetable for compliance with engine power controls. Under the compliance timetable licence holders who have admitted to under declaration, had until the end of 2004 to ensure that either: (i) their true engine power is registered and to have acquired enough licence entitlement to cover this, or (ii) to have derated their engine to the figure on their licence. In practice, most have chosen to acquire extra licences to cover their operational engine power. Consequently, it needs to be borne in mind that after 1999, the trends in average engine power shown in Table 1 are complicated by the effect of an increasing number of owners declaring their true, higher, engine power. Nevertheless, while this bias makes the actual rate of change unclear, it is clear that Scottish based vessels are now fishing with greater engine power on average than in the past.

The total registered engine power of the over 10m Scottish fleet was 341 thousand kilowatts in 2005 (Table 1) a fall of less than one per cent since 2004 and 11 per cent lower than 1995. However, average engine power, at 471 kW, has increased by 43 per cent since 1995. The opposing trends of decreasing total fleet engine capacity and increasing average engine power per can be explained by a combination of factors: (i) the 38 per cent reduction in the over 10 m fleet since 1995 (Section 1.2); (ii) the “natural wastage” of licensed engine power that often accompanies the aggregation of several licences onto a single vessel<sup>2</sup> and; (iii) since 1999, the progressive correction of under declared engine power, in line with the concessionary licensing arrangements noted above.

## **1.4 Employment**

Total employment in the catching sector fell by six per cent to 4,971 between 2004 to 2005 (Table 11), while the number of fishermen regularly employed on Scottish based vessels at 3,813 was eight per cent lower in 2005 (Table 13). The number of irregularly employed (mainly part time) fishermen in 2005 increased by 13 to 1,065.

---

<sup>2</sup> Occurs when the sum of the engine power capacities attached to the licences used in an aggregation, exceeds the maximum engine power of the vessel on which the aggregate licence is used. The excess engine power entitlement is then effectively lost from the fleet total.



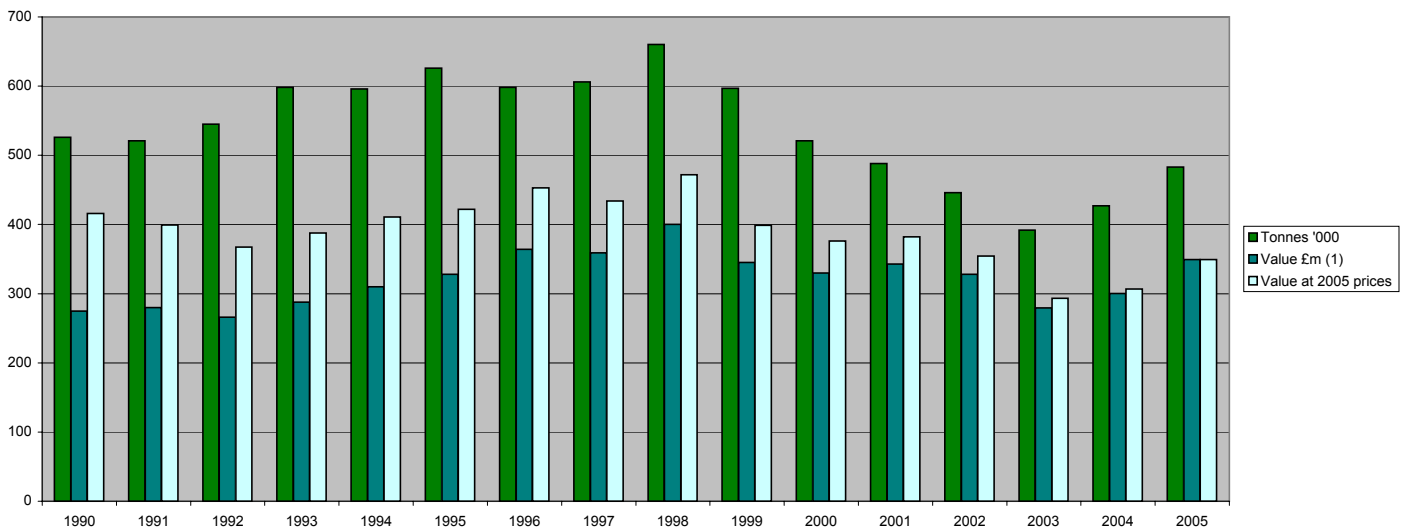
At a district level, the biggest losses in regular employment occurred at Ayr (-110) jobs and Peterhead (-101 jobs). The biggest employment gain was seen at Shetland, which gained 44 regular fishing jobs. Due to the job losses at Ayr, the district with the highest regular and total number of fishing jobs is back to being Fraserburgh where there was an increase in regular and total employment.

Table 1. Active Scottish based vessels and power, by overall length group, 31st December 1995 to 2005

		10 metres	>10 <15	15<20	20<25	25<30	30<35	35 metres	Total	Over 10 metres	
		& under	metres	metres	metres	metres	metres	& over		Number	Average
Number	1995	1,589	370	318	276	117	24	61	2,755	1,166	19.46
	1996	1,682	360	309	267	133	23	66	2,840	1,158	19.68
	1997	1,659	348	298	247	133	18	67	2,770	1,111	19.69
	1998	1,628	316	272	229	134	17	65	2,661	1,033	19.88
	1999	1,604	298	263	209	128	19	64	2,585	981	19.95
	2000	1,622	290	254	202	126	22	64	2,580	958	20.04
	2001	1,645	284	260	203	118	23	62	2,595	950	19.98
	2002	1,671	280	237	152	92	19	62	2,513	842	19.64
	2003	1,632	274	225	123	67	16	58	2,395	763	19.22
	2004	1,662	270	213	113	64	17	55	2,394	732	19.15
	2005	1,652	272	206	112	61	16	57	2,376	724	19.14
										<b>Power</b>	<b>Average</b>
Total power (kW)	1995	66,149	42,808	72,757	105,608	61,108	15,045	86,591	450,066	383,917	329.26
	1996	71,098	42,803	71,581	103,243	70,132	14,289	94,231	467,376	396,279	342.21
	1997	71,419	41,489	68,837	97,373	70,392	11,037	97,113	457,661	386,241	347.65
	1998	70,686	37,910	63,511	91,374	71,428	12,771	102,290	449,970	379,284	367.17
	1999	71,684	35,686	61,630	84,070	69,633	15,002	101,723	439,428	367,744	374.87
	2000	76,742	35,234	60,417	83,209	70,070	17,601	106,312	449,584	372,843	389.19
	2001	80,697	35,396	64,947	85,634	66,966	19,362	120,971	473,972	393,276	413.97
	2002	82,690	35,906	60,956	66,308	54,511	15,368	127,089	442,827	360,138	427.72
	2003	82,646	36,504	58,779	54,891	39,593	13,215	142,762	428,391	345,744	453.14
	2004	85,343	36,935	55,913	50,696	37,618	13,886	147,841	428,231	342,889	468.43
	2005	86,713	37,741	55,281	50,324	35,466	13,140	148,895	427,559	340,847	470.78

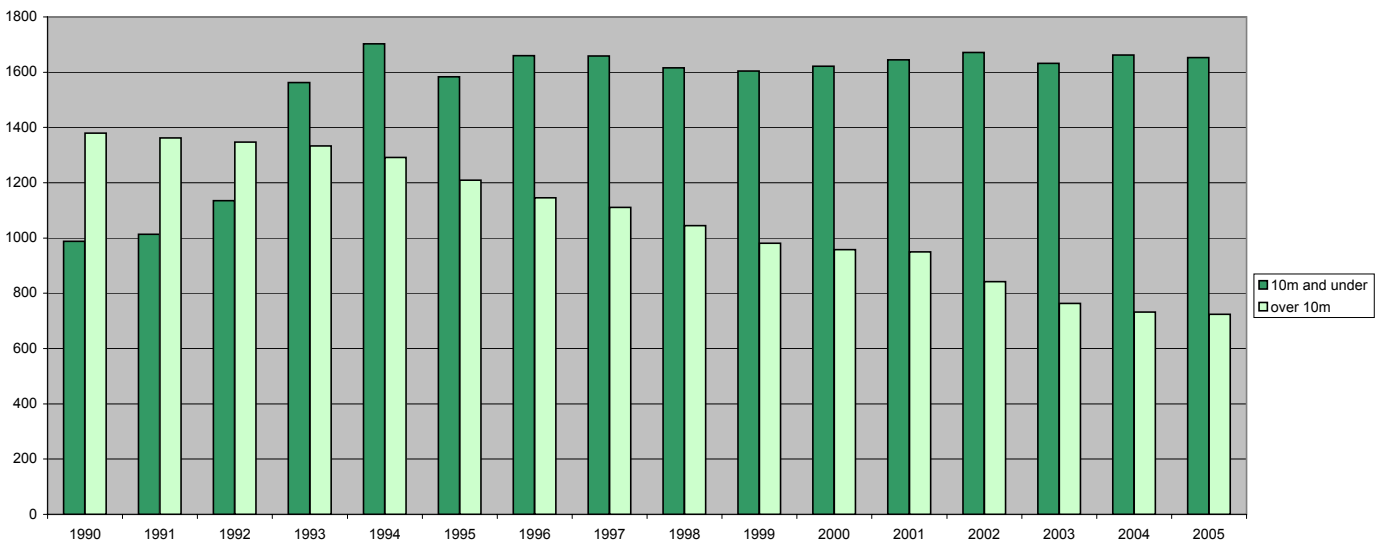
Scottish based vessels are those licensed at a Scottish port; Scottish registered vessels are those registered at a Scottish port on the Register of Shipping and Seamen. From the beginning of 1993 there was a requirement that all 10 metres and under vessels should be licensed.

Chart 1. Landings by Scottish based vessels, 1990 to 2005



(1) When the Register of Buyers and Sellers (RBS) was introduced in September 2005, Sales Notes were not initially required for sales of shellfish and information on the value of such landings is consequently missing. The value has therefore been estimated for a number of landings, mostly shellfish, relating to voyages starting on or after 1 September 2005.

Chart 2. Active Scottish based vessels, 1990 to 2005



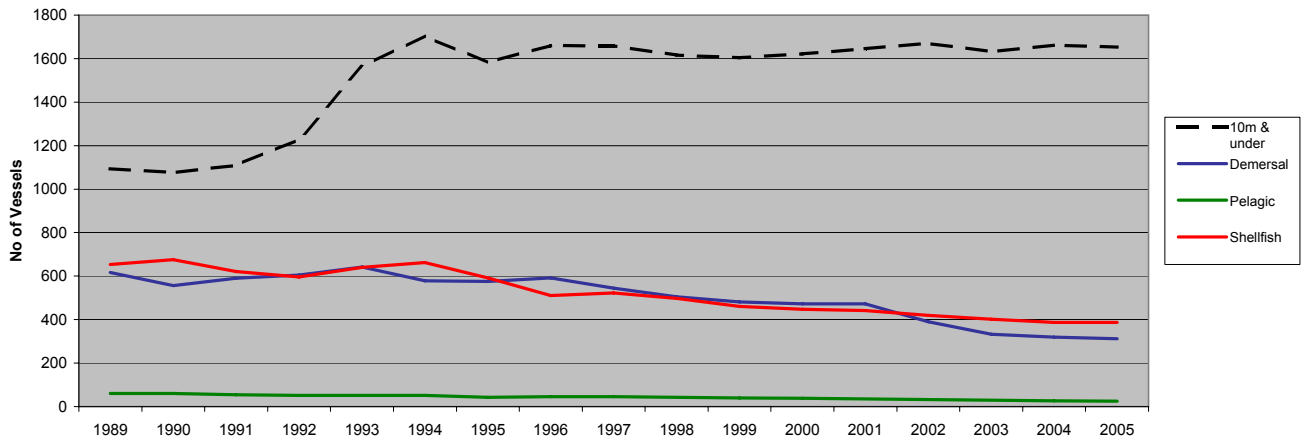
Increase in number of 10m & under vessels in 1993 due to changes in licensing requirements.

Table 2. Active Scottish based vessels, tonnage and power by overall length group and age group, 31st December 2005

	10 metres & under	>10 <15 metres	15<20 metres	20<25 metres	25<30 metres	30<35 metres	35 metres & over	Total	Over 10 metres
<b>Number</b>									
Under 10 years	187	25	26	24	13	5	24	304	117
10<15	172	14	9	9	6	1	2	213	41
15<20	236	62	22	28	18	2	7	375	139
20<25	202	38	20	24	6	0	6	296	94
25<30	177	23	22	10	6	0	4	242	65
30<35	103	41	52	11	5	3	2	217	114
35 years & over	149	43	50	4	5	4	7	262	113
Not known	426	26	5	2	2	1	5	467	41
<b>Total</b>	<b>1,652</b>	<b>272</b>	<b>206</b>	<b>112</b>	<b>61</b>	<b>16</b>	<b>57</b>	<b>2,376</b>	<b>724</b>
<b>Average age (years)</b>	<b>22.3</b>	<b>24.5</b>	<b>26.7</b>	<b>19.1</b>	<b>19.1</b>	<b>22.9</b>	<b>16.9</b>	<b>22.6</b>	<b>23.2</b>
<b>Total tonnage</b>									
Under 10 years	988	593	3,573	5,276	4,653	2,707	37,761	55,551	54,563
10<15	602	221	882	1,794	1,887	370	1,174	6,930	6,328
15<20	805	1,056	2,397	4,763	4,376	592	3,660	17,649	16,844
20<25	803	633	2,013	3,660	1,230	0	2,528	10,868	10,064
25<30	644	349	1,547	1,340	1,090	0	2,227	7,198	6,553
30<35	472	572	2,991	1,452	857	633	845	7,822	7,350
35 years & over	493	661	2,134	408	791	903	2,515	7,904	7,412
Not known	1,313	356	615	185	288	224	5,756	8,737	7,424
<b>Total</b>	<b>6,120</b>	<b>4,440</b>	<b>16,153</b>	<b>18,878</b>	<b>15,172</b>	<b>5,429</b>	<b>56,466</b>	<b>122,659</b>	<b>116,538</b>
<b>Average tonnage</b>	<b>4</b>	<b>17</b>	<b>77</b>	<b>170</b>	<b>252</b>	<b>347</b>	<b>975</b>	<b>60</b>	<b>160</b>
<b>Total power (kW)</b>									
Under 10 years	18,422	5,235	10,195	14,163	10,150	6,408	96,474	161,046	142,625
10<15	9,400	2,723	2,767	4,358	3,947	885	4,645	28,724	19,325
15<20	11,839	9,637	7,238	12,044	9,933	1,601	9,781	62,073	50,234
20<25	9,845	4,751	6,357	9,930	3,142	0	9,808	43,833	33,988
25<30	7,575	2,586	5,669	3,601	3,097	0	5,474	28,003	20,427
30<35	4,803	4,181	12,265	4,177	2,363	1,856	1,764	31,409	26,606
35 years & over	4,075	4,476	9,281	1,347	1,987	1,887	4,528	27,580	23,506
Not known	20,754	4,153	1,509	704	847	503	16,420	44,890	24,136
<b>Total</b>	<b>86,713</b>	<b>37,741</b>	<b>55,281</b>	<b>50,324</b>	<b>35,466</b>	<b>13,140</b>	<b>148,895</b>	<b>427,559</b>	<b>340,847</b>
<b>Average power</b>	<b>54</b>	<b>137</b>	<b>268</b>	<b>451</b>	<b>587</b>	<b>842</b>	<b>2548</b>	<b>200</b>	<b>464</b>

Year on year tonnage comparisons should be made with caution, since these figures take no account of the phased replacement of GRT with GT during the period 1996-2003.

Chart 3. Scottish based vessels by type, 1989 to 2005



From the beginning of 1993 there was a requirement that all 10 metres and under vessels should be licensed.

Chart 4. Scottish based vessels, average length for Demersal, Pelagic and Shellfish vessels, 1991 to 2005

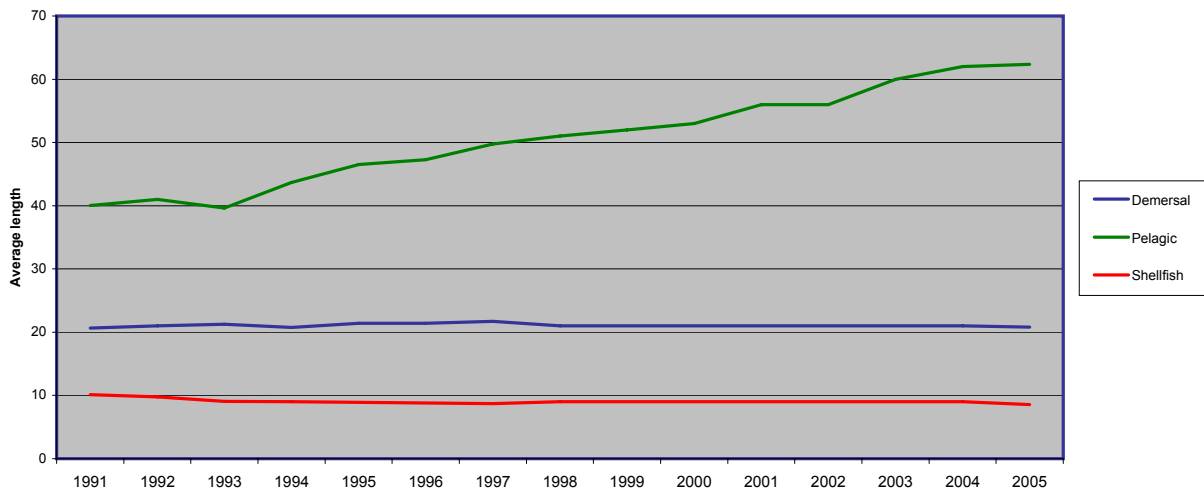


Table 3. Active Scottish based vessels: number, tonnage and power by overall length group, 31st December 2005

Length	Tonnes	Vessels	Total tonnes	Length	kW	Vessels	Total power	
10m & under	<40	1,652	6,120	10 m & under	<40	885	15,772	
>10 <15	<40	267	4,220	>10<15	40<75	354	19,541	
	40<60	5	219		75<150	320	32,776	
	Total	272	4,440		150<225	74	13,539	
15<20	<40	23	806	15<20	225<375	19	5,086	
	40<60	72	3,432		Total	1,652	86,713	
	60<80	29	1,959		>10<15	<40	2	73
	80<100	23	2,057		>10<15	40<75	30	1,888
	100<150	43	5,147			75<150	147	15,783
	150<200	16	2,752			150<225	64	12,118
Total	206	16,153	225<375	28		7,358		
20<25	40<60	1	57	20<25		375<550	1	522
	60<80	1	72		Total	272	37,741	
	80<100	6	534		15<20	75<150	18	2,317
	100<150	35	4,634		15<20	150<225	62	11,828
	150<200	46	7,894			225<375	99	29,187
	200<300	19	4,421			375<550	26	11,330
300<500	4	1,266	550<750	1		620		
Total	112	18,878	Total	206		55,281		
25<30	80<100	1	97	25<30	150<225	1	221	
	100<150	2	269		225<375	36	12,092	
	150<200	14	2,420		375<550	56	25,293	
	200<300	28	6,558		550<750	17	10,946	
	300<500	16	5,828		Over 750	2	1,772	
30<35	Total	61	15,172	30<35	Total	112	50,324	
	150<200	3	544		150<225	2	442	
	200<300	6	1,433		225<375	4	1,329	
	300<500	2	745		375<550	22	10,681	
	Over 500	5	2,707		550<750	29	18,877	
35 & over	Total	16	5,429	35 & over	Over 750	4	4,137	
	200<300	2	578		Total	61	35,466	
	300<500	22	8,741		30<35	375<550	5	2,390
	Over 500	33	47,147			550<750	5	3,275
Total	57	56,466	Over 750	6		7,475		
Total	Under 40	1,942	11,148	35 & over	Total	16	13,140	
	40<60	78	3,708		375<550	3	1,507	
	60<80	30	2,031		550<750	9	6,191	
	80<100	30	2,688	35 & over	Over 750	45	141,196	
	100<150	80	10,049		Total	57	148,895	
	150<200	79	13,610		Total	Under 40	887	15,844
	200<300	55	12,990	40<75		384	21,429	
	300<500	44	16,580	75<150		485	50,875	
	Over 500	38	49,854	150<225		203	38,148	
	Total	2,376	122,659	225<375		186	55,051	
				375<550		113	51,723	
			550<750	61		39,909		
			Over 750	57		154,580		
			Total	2,376	427,559			

Year on year tonnage comparisons should be made with caution, since these figures take no account of the phased replacement of GRT with GT during the period 1996-2003.

Table 4. Active Scottish based vessels by main fishing method, 31st December 1995 to 2005

	10m & under				Over 10m													Total
	Nephrops trawl	Creel fishing	Other	Total	Pelagic				Demersal					Shellfish			Total	
					Purse seine	Pelagic trawl	Other	Total	Trawl	Seine	Lines	Other	Total	Nephrops trawl	Other	Total		
1995	44	1,450	95	1,589	34	15	-	49	370	147	14	9	540	326	251	577	1,166	2,755
1996	53	1,522	107	1,682	33	17	-	50	409	122	14	8	553	300	255	555	1,158	2,840
1997	62	1,480	117	1,659	28	17	-	45	418	104	8	14	544	277	245	522	1,111	2,770
1998	63	1,440	125	1,628	25	17	-	42	390	96	5	14	505	248	238	486	1,033	2,661
1999	73	1,411	120	1,604	21	19	-	40	375	87	4	15	481	236	224	460	981	2,585
2000	91	1,404	127	1,622	19	19	-	38	371	85	4	12	472	223	225	448	958	2,580
2001	99	1,421	125	1,645	9	27	-	36	379	80	5	9	473	223	218	441	950	2,595
2002	100	1,440	131	1,671	8	25	-	33	326	47	6	11	390	208	211	419	842	2,513
2003	102	1,406	124	1,632	6	21	2	29	281	36	4	11	332	194	208	402	763	2,395
2004	107	1,426	129	1,662	6	20	-	26	267	33	9	10	319	181	206	387	732	2,394
2005	108	1,416	128	1,652	6	19	-	25	259	34	9	10	312	177	210	387	724	2,376

From the beginning of 1993 there was a requirement that all 10 metres and under vessels should be licensed.

Table 5. Active Scottish based vessels, by main fishing method and overall length group, 31st December 2005

	10 metres & Under	>10<15 metres	15<18 metres	18<25 metres	25<35 metres	35<50 metres	50 metres & over	Total
Demersal single trawl	21	21	31	98	38	9	0	218
Demersal pair trawl	0	0	4	15	7	0	0	26
Seine net	0	0	3	21	9	1	0	34
Lines	29	0	0	0	7	2	0	38
Demersal gill nets	9	3	0	0	2	5	0	19
Demersal twin/mult trawl	1	0	1	13	4	0	0	19
Beam trawl	1	1	0	1	2	14	0	19
Other demersal	1	0	0	1	0	0	0	2
Demersal total	62	25	39	149	69	31	0	375
Purse seine	0	0	0	0	0	1	5	6
Pelagic trawl	0	0	0	0	0	0	19	19
Other pelagic	0	0	0	0	0	0	0	0
Pelagic total	0	0	0	0	0	1	24	25
Creel fishing	1,416	108	6	2	0	0	0	1,532
Nephrops trawl	108	107	52	17	1	0	0	285
Mechanical dredging	21	27	30	23	7	1	0	109
Suction dredging	2	1	0	0	0	0	0	3
Shell fishing by hand	42	4	0	0	0	0	0	46
Shrimp trawl	1	0	0	0	0	0	0	1
Shellfish total	1,590	247	88	42	8	1	0	1,976
Total	1,652	272	127	191	77	33	24	2,376

Table 6. Active Scottish based vessels by base district and overall length group, 31st December 2005

	10 metres & Under	>10 <15 metres	15<18 metres	18<25 metres	25<35 metres	35<50 metres	50 metres & over	Total
Eyemouth	74	23	4	8	1	0	0	110
Pittenweem	98	15	2	4	0	0	0	119
Aberdeen	75	8	1	7	2	1	0	94
Peterhead	35	3	5	25	16	14	3	101
Fraserburgh	100	13	14	59	23	2	12	223
Buckie	30	2	7	28	4	2	0	73
Wick	100	11	4	6	2	0	0	123
Total east coast	512	75	37	137	48	19	15	843
Orkney	127	33	4	1	5	0	0	170
Shetland	159	11	3	10	5	1	8	197
Stornoway	254	44	17	3	0	0	1	319
Total Islands	540	88	24	14	10	1	9	686
Lochinver	15	1	0	2	0	0	0	18
Kinlochbervie	22	1	0	3	0	0	0	26
Ullapool	52	15	5	1	0	0	0	73
Mallaig	58	12	12	9	1	0	0	92
Oban	109	19	7	6	1	0	0	142
Campbeltown	131	27	22	2	0	0	0	182
Ayr	83	16	19	17	17	13	0	165
Portree	130	18	1	0	0	0	0	149
Total west coast	600	109	66	40	19	13	0	847
Total	1652	272	127	191	77	33	24	2376

A district is a geographical area within which there are a number of creeks or ports.

Table 7. Changes to the Scottish based, over 10 metres fleet, 31st December 2004 to 2005

	>10 <15 metres	15<20 metres	20<25 metres	25<30 metres	30<35 metres	35 metres & over
Active Scottish vessels, 31st December 2004	270	213	113	64	17	55
Continued to be based in Scotland	261	198	110	59	16	54
Transferred to another UK port	2	6	-	-	-	-
Became inactive	7	9	3	5	1	1
Transferred from another UK port	1	2	1	1	-	2
Became active	6	2	1	1	-	1
Newly built vessels	4	4	-	-	-	-
Change of vessel length category	-	-	-	-	-	-
Active Scottish vessels, 31st December 2005	272	206	112	61	16	57

Table 8. Scottish based sea fishing licences by category, 31st December 2003 to 2005

	Vessel licences				Entitlements				Total			
	Category A	Category B	Category C	<=10m	Category A	Category B	Category C	<=10m	Category A	Category B	Category C	<=10m
2003	608	87	68	1,632	49	1	3	78	657	88	71	1,710
2004	581	86	65	1,662	35	4	6	85	616	90	71	1,747
2005	575	85	64	1652	54	2	9	95	629	87	73	1,747

In 2004, includes 26 pelagic licences (category A) on vessels.

Category A licences allow full access to all stocks available to UK vessels.

Category B licences allow only restricted access to some UK available stocks.

Category C licences further restrict the range of stocks that can be fished.

Table 9. Scottish based sea fishing licences: vessel capacity units by type of licence, 31st December 2005

	On vessels				Entitlements				Total			
	Category A	Category B	Category C	<=10m	Category A	Category B	Category C	<=10m	Category A	Category B	Category C	<=10m
Pelagic licences	68,875	-	-	-	7,908	-	-	-	76,783	-	-	-
Other licences	166,624	9,644	10,111	73,785	7,824	222	938	2,023	174,448	9,866	11,049	75,808

Table 10. Scottish based, over 10 metres sea fishing licences, by category, 31st December 2004 to 2005

	On vessels			Entitlements		
	Category A	Category B	Category C	Category A	Category B	Category C
Scottish based licences, 31st December 2004	581	86	65	35	4	6
Remained on Scottish based vessels	551	84	60	27	1	5
Became Scottish entitlements	20	-	2	5	3	-
Transferred/aggregated to UK vessels	10	2	2	2	-	1
Other losses	-	-	1	1	-	-
Placed on vessel from Scottish entitlements	14	1	-	27	1	4
Transferred/aggregated from other UK ports	10	-	4	-	-	-
Scottish based licences, 31st December 2005	575	85	64	54	2	9

**Table 11. Employment in sea fishing and Scottish labour force, 1995 to 2005**

	1995	1996	1997	1998	1999	2000	2001	2002	2003	2004	2005
Total employed in the catching sector	8,395	8,084	8,194	7,771	7,330	6,902	6,637	5,707	5,276	5,275	4,971
Total labour force ('000)	2,280	2,278	2,299	2,298	2,280	2,334	2,341	2,357	2,367	2,410	2,415
Employment in fishing as % of labour force	0.4	0.4	0.4	0.3	0.3	0.3	0.3	0.2	0.2	0.2	0.2

Source : Labour Force Survey; Scottish Fishery Protection Agency. (Data prior to 1998 for LFS is based on 4 combined quarters, data from 1999 onwards is based on annual data)

**Table 12. Value of sea fish landings into Scotland by Scottish based vessels; fishermen employed, by region, 2005**

Region	Landings (1) 2005	Labour force (2)	Fishermen employed	As % labour force
Eilean Siar, Orkney & Shetland	68.6	32	1,273	3.98
Aberdeenshire	130.9	79	1,079	1.37
Angus	0.9	37	64	0.17
Argyll & Bute	12.6	30	541	1.80
City of Aberdeen	13.3	147	57	0.04
City of Edinburgh	-	305	5	0.00
Dumfries and Galloway	2.6	66	195	0.30
East Lothian	1.1	29	47	0.16
Fife	3.3	151	142	0.09
Highland	48.2	104	725	0.70
Moray	4.3	37	248	0.67
North Ayrshire	0.4	44	24	0.05
Scottish Borders	3.7	44	116	0.26
South Ayrshire	2.8	53	455	0.86
Total	292.6	1,158	4,971	0.43

(1) £ million (2) thousands, Office for National Statistics

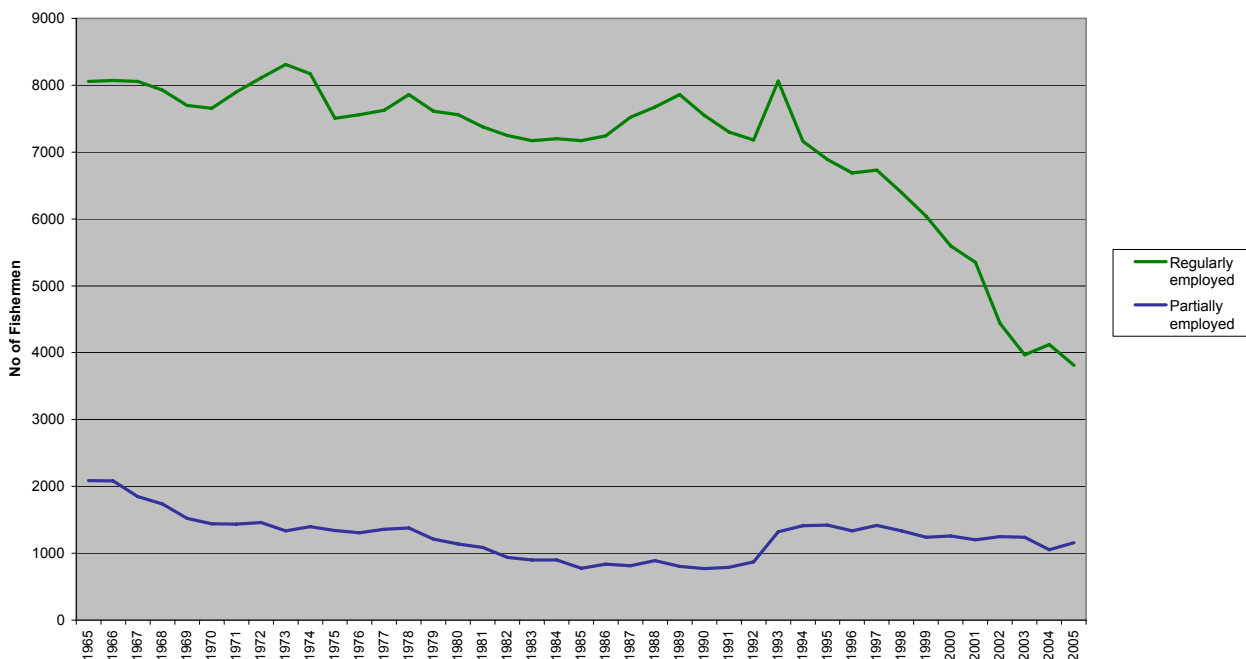
**Table 13. Number of fishermen employed on Scottish based vessels, 2001 to 2005**

	2001	2002	2003	2004	2005
Regularly employed	5,353	4,369	3,968	4,124	3,813
Irregularly employed	1,203	1,233	1,238	1,052	1,065
Crofters	81	105	70	99	93
Total	6,637	5,707	5,276	5,275	4,971

**Table 14. Number of fishermen employed by district and employment status, 2005**

	Regularly employed	Irregularly employed	Crofters	Total
Eyemouth	152	16	0	168
Pittenweem	107	35	0	142
Aberdeen	91	72	0	163
Peterhead	273	0	0	273
Fraserburgh	614	150	0	764
Buckie	227	21	0	248
Wick	157	0	0	157
Orkney	284	51	0	335
Shetland	304	147	0	451
Stornoway	238	213	36	487
Lochinver	35	2	8	45
Kinlochbervie	41	0	2	43
Ullapool	74	6	0	80
Mallaig	154	15	1	170
Oban	163	66	15	244
Campbeltown	256	69	0	325
Ayr	529	136	0	665
Portree	114	66	31	211
All districts	3,813	1,065	93	4,971

**Chart 5 Number of fishermen employed on Scottish based vessels, 1965 to 2005**



## 2. Overview of Catches and Landings

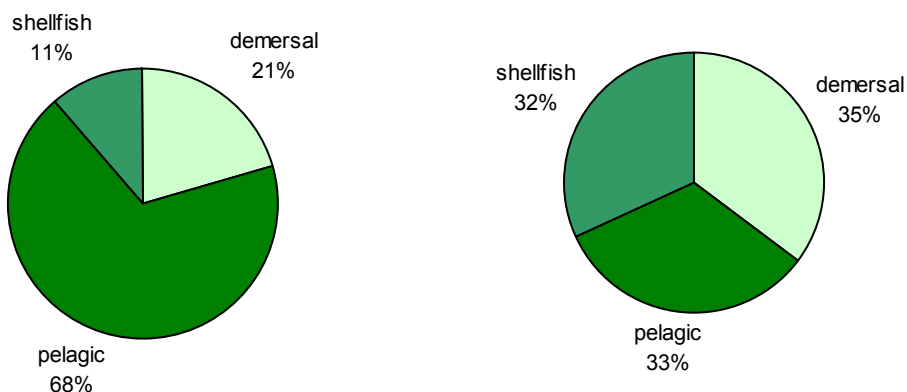
### 2.1 Landings by Scottish based vessels

Scottish based vessels made just under 69 thousand voyages in 2005, a three per cent decrease on the number in 2004 (Table 18). These voyages were however, more productive: the total quantity landed increased by 13 per cent to 483 thousand tonnes while the total value of these landings went up by 14 per cent in real terms to £349 million. Pelagic landings formed 68 per cent of the total landed although the relatively low prices achieved by pelagic species resulted in the sector contributing only 33 per cent of the total value landed (Chart I). Conversely, demersal species which fetch higher prices, made up 21 per cent of total weight landed but formed 35 per cent of the total value landed. High value shellfish landings formed only 11 per cent of the total by weight but 32 per cent by value. Despite having declined sharply in total value (real terms) since 1998 (Chart 11), the demersal sector remained the most valuable to the Scottish based fleet in 2005. The proportion of the value of the annual catch of the Scottish based fleet landed into Scotland increased slightly between 2004 and 2005, from 82 to 84 per cent (calculated from table 18).

*Chart I: Total landings by Scottish based vessels by species type, 2005*

**Quantity:** 483,000 tonnes

**Value<sup>1</sup>:** £349.0 million



Looking at the longer term trends, the value of demersal landings increased by 8 per cent in real terms in 2005 to reach £123 million, reversing the decline observed over the period 2001-2004. Nevertheless, the 2005 figure is 27 per cent lower in real terms compared with 2001. Over the same period, the value of pelagic landings (at 2005 prices) has increased by 6 per cent from £108 million in 2001 to £114 million in 2005. The value of shellfish landings has also increased by 6 per cent in real terms over this period to reach £112 million.

---

<sup>1</sup> When the Register of Buyers and Sellers (RBS) was introduced in September 2005, Sales Notes were not initially required for sales of Shellfish and information on the value of such landings is consequently missing. The value has therefore been estimated for a number of landings, mostly of shellfish, relating to voyages starting on or after 1st September 2005.

The total quantity of fish landed by Scottish vessels has fallen by one per cent since 2001 (calculated from Table 17) affecting the demersal sector most (down by 30 thousand tonnes or 23 per cent). Pelagic landings by Scottish based vessels into UK ports have increased since 2001 by 86 thousand tonnes to 217 thousand tonnes while pelagic landings abroad have decreased by 62 thousand tonnes, resulting in an overall increase of 24 thousand tonnes, or 8 per cent. Annual quantities of shellfish landed have remained relatively stable over this period.

## 2.2 Total landings into Scotland

The quantity and value of all landings into each Scottish Fishery Office district are shown in Figures 1 and 2, respectively.

In 2005, the total value of fish landed into Scottish ports by vessels of all nationalities was £370 million, representing a 16 per cent increase over the value of landings in 2004, at 2005 prices. The increase in value compared with 2001 (at 2005 prices) is 10 per cent. In 2005, the total quantity landed into Scottish ports by vessels of all nationalities was 441 thousand tonnes, 7 per cent higher than in 2004 and 26 per cent higher than in 2001 (Table 17). There has been a substantial switch in the contribution of the demersal and pelagic sectors since 2001, with demersal species declining from 43 per cent to 28 per cent of landed volume, while pelagic species have increased from 42 per cent to 59 per cent (calculated from Table 17). Since 2001 the quota for key demersal <sup>2</sup> and key pelagic <sup>3</sup> stocks has decreased by 11 and 13 per cent respectively.

*Table II: Combined UK quota ('000 tonnes) for key demersal and pelagic stocks 2001-2005 (based on Table 15)*

<b>Quota ('000 tonnes)</b>	<b>2001</b>	<b>2002</b>	<b>2003</b>	<b>2004</b>	<b>2005</b>	<b>Change 2001 - 2005</b>
<i>Combined key demersal stocks</i>	159	186	128	141	142	<b>-17 (-11%)</b>
<i>Combined key pelagic stocks</i>	290	282	276	277	251	<b>-39 (-13%)</b>

<sup>2</sup> Key demersal stocks are considered to be North Sea & West of Scotland stocks of Cod, Haddock, Monkfish, Whiting, Saithe, Plaice and Norway Lobster.

<sup>3</sup> Key pelagic stocks are considered to be North Sea & West of Scotland stocks of Mackerel, Herring and Horse Mackerel.



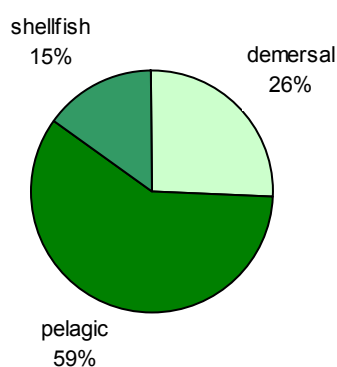
### 2.3 Landings by UK vessels into Scotland by area and district

In 2005, UK vessels landed 366 thousand tonnes of all species, at a value of £309 million, into Scottish ports. These landings represent an increase of 9 per cent in quantity and an increase of 17 per cent in value from 2004 (at 2005 prices) (Table 17). The value of landings at 2005 prices by UK vessels into Scotland has increased by 8 per cent since 2001.

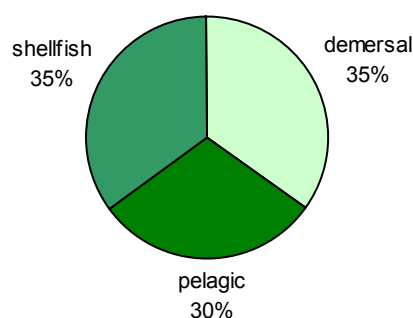
The species combination of these landings was broadly similar to that of landings by Scottish based vessels (Chart I), although pelagic vessels formed a smaller proportion of the UK landings into Scotland total (Chart II) as Scottish vessels landed 111 thousand pelagic tonnes abroad (Table 17).

Chart II: Landings by UK vessels into Scotland, 2005

**Quantity:** total 366,300 tonnes



**Value<sup>4</sup>:** total £308.7 million



#### Regional breakdown

*Eastern Area: Eyemouth, Pittenweem, Aberdeen, Peterhead, Fraserburgh, Buckie*  
(Comparisons calculated from table 21)

- In 2005, landings by UK vessels into the six eastern districts increased by five per cent and the value of these landings increased by 25 per cent to £162 million.
- Only Eyemouth and Aberdeen experienced slight decreases in the value of landings in 2005.

---

<sup>4</sup> When the Register of Buyers and Sellers (RBS) was introduced in September 2005, Sales Notes were not initially required for sales of Shellfish and information on the value of such landings is consequently missing. The value has therefore been estimated for a number of landings, mostly of shellfish, relating to voyages starting on or after 1st September 2005.

*Northern Area: Wick, Orkney, Shetland, Stornoway, Kinlochbervie, Lochinver*

- The value of pelagic landings into Shetland increased by 55 per cent to £41 million. The increase of £17 million in the total value of all landings into Shetland meant that the value of landings in the Northern area increased by 19 per cent in 2005 despite decreases in value of landings in all districts in Northern, other than Orkney and Shetland.
- The volume of landings decreased at all northern districts except Orkney and Shetland.

*Western Area: Ullapool, Mallaig, Portree, Oban, Campbeltown, Ayr*

- The volume and value of landings at western districts in 2005 were similar to those in 2004.
- Decreases in value and volume in some districts were offset by increases in other districts. However, of particular interest is the increase in price achieved for shellfish landed into the Campbeltown district where the value of shellfish landed increased by £888 thousand (12 per cent) in spite of a 12 per cent decrease in the quantity of shellfish landed.

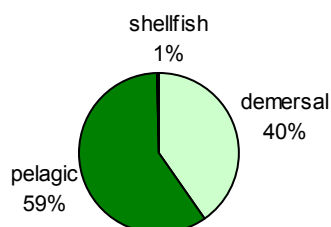
## 2.4 Landings by foreign vessels into Scotland

Foreign vessels landed 75 thousand tonnes worth £62 million into Scottish ports in 2005, a slight decrease in quantity, but an 11 per cent increase in value from 2004 (at 2005 prices). The proportion of total tonnage landed by foreign vessels (17 per cent in 2005) has been relatively stable at 16 to 19 per cent since 2001 (Table 17).

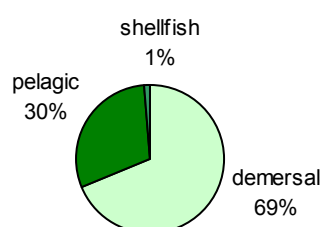
The species types landed by foreign vessel has also remained similar to recent years, with pelagic forming 59 per cent by volume but only 30 per cent by value (Chart III). Most of the remainder comprised demersal species, with negligible landings of shellfish of just 526 tonnes in 2005 (Table 24).

*Chart III: Foreign landings into Scotland by species type, 2005*

**Quantity:** total 74,700 tonnes



**Value<sup>5</sup>:** total £61.6 million



<sup>5</sup> When the Register of Buyers and Sellers (RBS) was introduced in September 2005, Sales Notes were not initially required for sales of Shellfish and information on the value of such landings is consequently missing. The value has therefore been estimated for a number of landings, mostly of shellfish, relating to voyages starting on or after 1st September 2005.

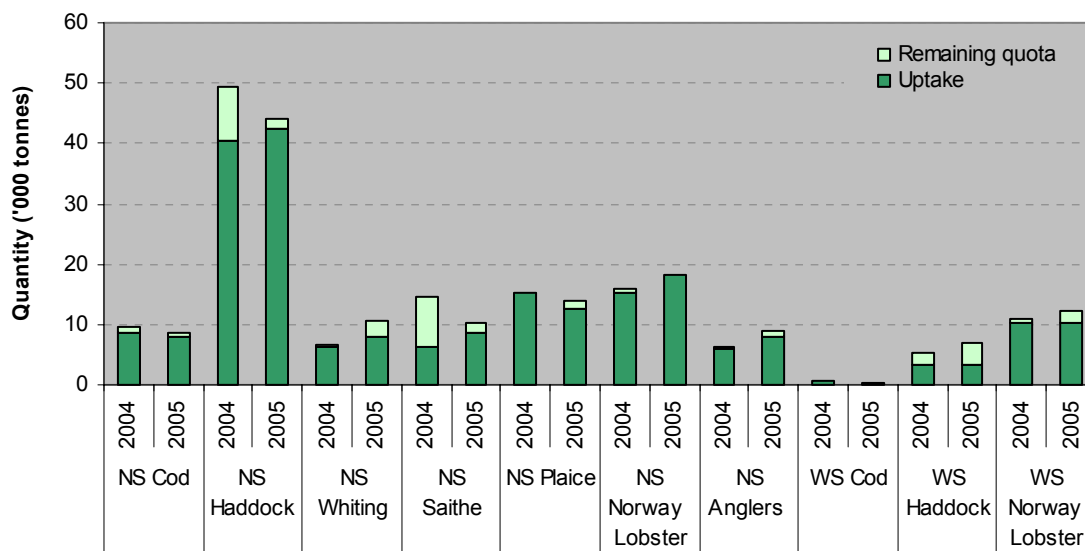
## 2.5 Uptake of UK quota

### 2.5.1 Demersal stocks

Quota uptake reached 90 per cent or more for five of the ten most valuable demersal stocks (NS Cod, NS Haddock, NS Plaice, NS Norway Lobster and NS Monkfish; Chart IV, Table 15). Uptake of these key quota stocks in 2005 was broadly similar to that in 2004, with some notable exceptions:

- Uptake of NS Haddock increased from 82 to 96 per cent as landings increased by five per cent while quota decreased by 11 per cent.
- Landings of NS Whiting were higher than in 2004, but with an increase in quota of 55 per cent in 2005, the proportion of quota that this represented fell from 92 to 77 per cent.
- Landings of NS Saithe increased by 37 per cent as quota decreased by 30 per cent meaning that uptake increased from 44 to 86 per cent.
- Uptake of WS Haddock fell from 65 to 46 per cent, largely as a consequence of an increase in quota by 34 per cent.

*Chart IV: Quota uptake of main North Sea (NS) and West of Scotland (WS) demersal stocks by UK vessels in 2004 and 2005*



## 2.5.2 Pelagic stocks

Quota uptake for the four most important pelagic stocks continued to be high in 2005, approaching 100 per cent for NS Herring, WS Herring and WS Mackerel and exceeding 90 per cent for WS Horse Mackerel. This was in spite of large differences in quota from 2004:

- NS Herring quota increased by 46 per cent and was matched by a 47 per cent increase in landings.
- WS Mackerel quota decreased by 27 per cent; landings correspondingly decreased by 26 per cent.
- WS Horse Mackerel quota decreased by 37 per cent and landings correspondingly decreased by 36 per cent.

*Chart V: Quota uptake of main North Sea (NS) and West of Scotland (WS) pelagic stocks by UK vessels in 2004 and 2005*

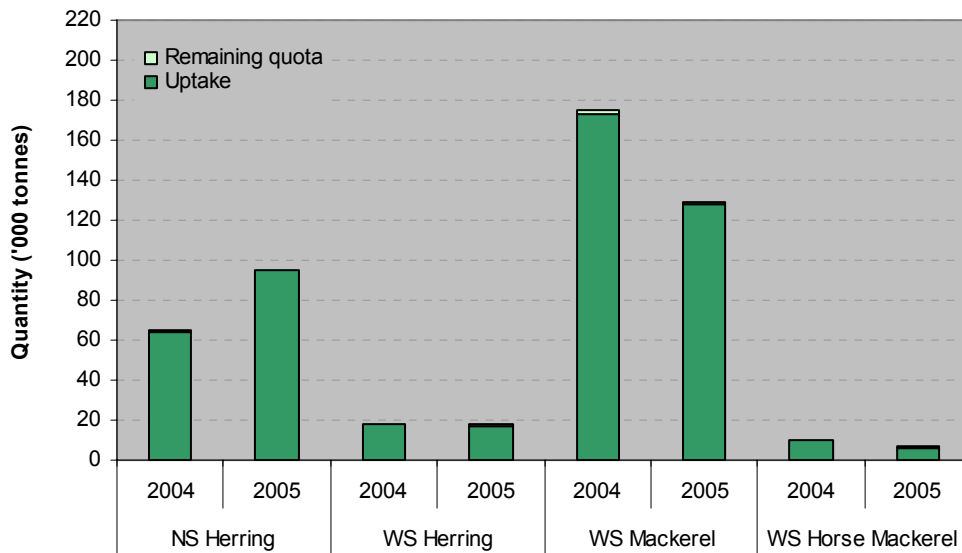


Figure 1: Volume (live weight tonnes) landed by district, 2005

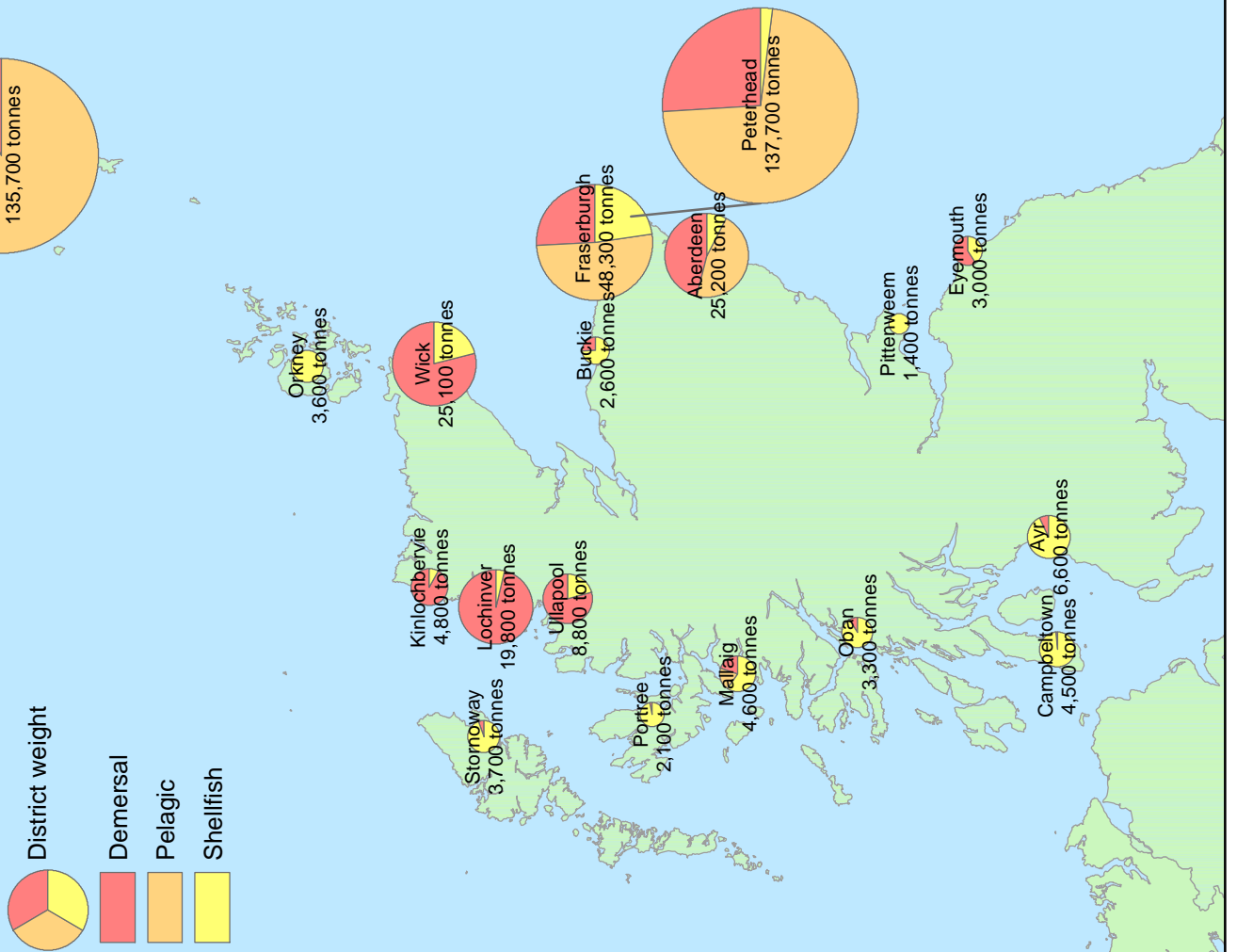


Figure 2: Value (£) landed by district, 2005

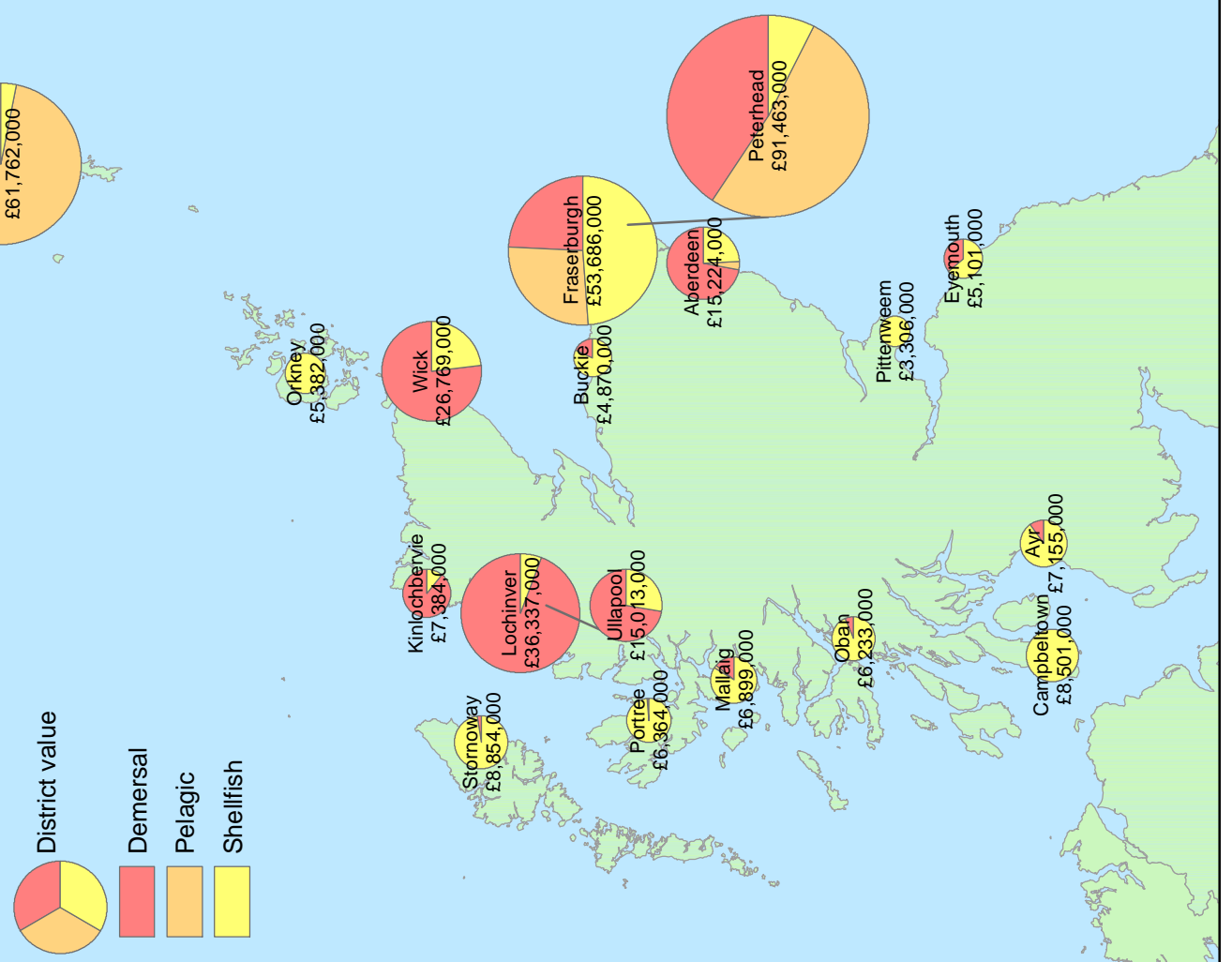


Table 15. Total Allowable Catches, UK quotas, and liveweight landed by UK vessels, 2001 to 2005

Area	Species	Sea area	Year	EU total	UK quota		UK uptake	
				allowable catch	After exchanges	% of TAC	Tonnes	% of quota
North sea	Cod	IIa (EU),IV	2001	40,720	20,555	50.5	19,712	95.9
			2002	41,620	20,377	49.0	18,522	90.9
			2003	22,659	10,696	47.2	10,062	94.1
			2004	22,659	9,507	42.0	8,534	89.8
			2005	22,659	8,674	38.3	7,953	91.7
	Haddock	IIa (EU),IV	2001	47,895	41,184	86.0	32,576	79.1
			2002	77,935	59,805	76.7	43,234	72.3
			2003	39,521	33,257	84.2	33,099	99.5
			2004	65,467	49,537	75.7	40,495	81.7
			2005	51,321	44,123	86.0	42,422	96.1
	Whiting	IIa (EU),IV	2001	21,775	14,363	66.0	11,887	82.8
			2002	32,358	19,608	60.6	9,060	46.2
			2003	12,294	7,257	59.0	6,417	88.4
			2004	12,294	6,784	55.2	6,267	92.4
			2005	19,800	10,544	53.3	8,110	76.9
	Saithe	IIa,III(EU),IV	2001	42,640	6,497	15.2	6,587	101.4
			2002	66,150	10,718	16.2	9,267	86.5
			2003	79,200	13,463	17.0	7,078	52.6
			2004	91,200	14,654	16.1	6,397	43.7
			2005	69,600	10,239	14.7	8,766	85.6
	Plaice	IIa (EU),IV	2001	76,540	18,705	24.4	19,149	102.4
			2002	73,110	19,063	26.1	16,708	87.6
			2003	69,282	18,313	26.4	13,890	75.8
			2004	57,923	15,004	25.9	15,253	101.7
			2005	57,370	13,932	24.3	12,707	91.2
	Sole	II,IV	2001	19,000	1,274	6.7	909	71.4
			2002	16,000	800	5.0	693	86.6
			2003	15,850	827	5.2	759	91.8
			2004	17,000	869	5.1	889	102.3
			2005	18,320	1,127	6.2	945	83.9
	Hake	IIa(EU),IV(EU)	2001	870	211	24.3	196	93.0
			2002	946	224	23.7	157	70.1
			2003	1,053	175	16.6	131	74.9
			2004	1,373	233	17.0	213	91.4
			2005	1,496	262	17.5	251	95.8
	Norway lobster	IIa(EU),IV(EU)	2001	15,480	12,961	83.7	12,318	95.0
			2002	16,623	13,885	83.5	12,909	93.0
			2003	16,623	14,005	84.3	12,374	88.4
			2004	18,987	16,047	84.5	15,145	94.4
			2005	21,350	18,101	84.8	18,079	99.9
	Norway other	IV(Norway)	2001	11,000	3,875	35.2	2,401	62.0
			2002	11,000	3,875	35.2	1,928	49.8
			2003	11,000	3,775	34.3	1,881	49.8
			2004	11,000	4,045	36.8	1,586	39.2
			2005	7,000	2,488	35.5	1,006	40.4
Anglers	IIa(EU),IV(EU)	2001	14,130	11,495	81.4	10,499	91.3	
		2002	10,500	9,205	87.7	8,534	92.7	
		2003	7,000	6,245	89.2	6,060	97.0	
		2004	7,000	6,157	88.0	6,048	98.2	
		2005	10,314	8,950	86.8	8,059	90.0	
Megrin	IIa(EU),IV(EU)	2001	2,700	2,589	95.9	1,850	71.5	
		2002	2,700	2,584	95.7	1,676	64.9	
		2003	2,700	2,589	95.9	1,232	47.6	
		2004	1,890	1,814	96.0	1,114	61.4	
		2005	1,740	1,677	96.4	1,197	71.4	
Lemon sole & witches	IIa(EU),IV(EU)	2001	10,800	6,580	60.9	3,478	52.9	
		2002	9,720	5,937	61.1	2,317	39.0	
		2003	8,262	5,039	61.0	2,045	40.6	
		2004	7,023	4,089	58.2	1,634	40.0	
		2005	6,500	3,825	58.8	1,885	49.3	
Skate & rays	IIa(EU),IV(EU)	2001	4,848	3,128	64.5	1,299	41.5	
		2002	4,848	3,136	64.7	1,357	43.3	
		2003	4,121	2,655	64.4	1,270	47.8	
		2004	3,503	2,266	64.7	1,115	49.2	
		2005	3,220	2,080	64.6	825	39.7	
Dabs & flounder	IIa(EU),IV(EU)	2001	27,060	2,330	8.6	1,391	59.7	
		2002	27,060	2,331	8.6	1,256	53.9	
		2003	23,001	2,144	9.3	1,301	60.7	
		2004	19,551	1,684	8.6	1,197	71.1	
		2005	18,000	1,830	10.2	1,606	87.8	
Turbot & brill	IIa(EU),IV(EU)	2001	7,200	1,110	15.4	768	69.2	
		2002	6,750	1,042	15.4	631	60.6	
		2003	5,738	886	15.4	514	58.0	
		2004	4,877	732	15.0	605	82.7	
		2005	4,550	672	14.8	579	86.2	
Spurdog	IIa(EU),IV(EU)	2001	8,870	7,177	80.9	1,006	14.0	
		2002	7,100	5,745	80.9	1,013	17.6	
		2003	5,640	4,413	78.2	1,177	26.7	
		2004	4,472	3,595	80.4	1,052	29.3	
		2005	1,136	925	81.4	489	52.9	
Northern prawns	IIa(EU),IV(EU)	2001	6,404	1,778	27.8	465	26.2	
		2002	4,880	1,074	22.0	68	6.3	
		2003	4,880	1,060	21.7	0	0.0	
		2004	4,880	1,074	22.0	0	0.0	
		2005	4,880	1,074	22.0	0	0.0	
Herring	IVa,b	2001	164,000	40,570	24.7	40,834	100.7	
		2002	146,327	38,101	26.0	38,094	100.0	
		2003	224,458	56,818	25.3	56,781	99.9	
		2004	260,502	65,220	25.0	64,331	98.6	
		2005	305,557	94,941	31.1	94,648	99.7	

Area	Species	Sea area	Year	EU total	UK quota		UK uptake	
				allowable catch	After exchanges	% of TAC	Tonnes	% of quota
North sea	Herring	IVc,VIId	2001	25,000	1,693	6.8	2,334	137.9
			2002	42,673	4,094	9.6	3,877	94.7
			2003	59,542	4,595	7.7	3,961	86.2
			2004	66,098	4,481	6.8	4,501	100.4
			2005	74,293	6,082	8.2	5,861	96.4
	Mackerel	IIa (EU),III(EU),IV	2001	25,295	1,660	6.6	1,139	68.6
			2002	25,798	1,478	5.7	1,436	97.2
			2003	22,063	1,611	7.3	866	53.8
			2004	21,381	1,707	8.0	1,579	92.5
			2005	17,067	609	3.6	612	100.5
	Horse mackerel	IIa(EU),IV(EU)	2001	49,400	5,554	11.2	3,479	62.6
			2002	49,400	5,230	10.6	1,446	27.6
			2003	41,667	5,124	12.3	1,192	23.3
			2004	46,788	6,219	13.3	2,554	41.1
			2005	40,616	2,366	5.8	1,800	76.1
	Blue whiting	IIa(EU),IV(EU)	2001	50,000	1,071	2.1	-	-
			2002	27,650	698	2.5	-	-
			2003	27,650	592	2.1	65	11.0
			2004	53,934	1,063	2.0	278	26.2
			2005	122,024	2,589	2.1	3	0.1
	Sandeel	IIa(EU),IV(EU)	2001	970,000	20,000	2.1	-	-
			2002	863,000	17,474	2.0	2,442	14.0
			2003	863,000	17,055	2.0	115	0.7
			2004	771,200	15,901	2.1	29	0.2
			2005	655,960	13,525	2.1	0	0.0
Sandeel	IV (Norway)	2001	150,000	7,500	5.0	-	-	
		2002	150,000	-	-	-	-	
		2003	131,000	-	-	-	-	
		2004	131,000	6,550	5.0	-	-	
		2005	10,000	500	5.0	-	-	
Pout & blue whiting	IV (ex EC) (Norway)	2001	50,000	2,500	5.0	-	-	
		2002	50,000	2,500	5.0	-	-	
		2003	50,000	2,500	5.0	-	-	
		2004	19,000	2,500	13.2	-	-	
		2005	19,000	950	5.0	-	-	
Sprat	IIa(EU),IV(EU)	2001	220,000	8,350	3.8	-	-	
		2002	220,000	8,348	3.8	1,633	19.6	
		2003	240,000	9,111	3.8	1,310	14.4	
		2004	238,000	9,035	3.8	1,480	16.4	
		2005	250,000	9,493	3.8	1,605	16.9	
West of Scotland	Cod	Vb(EU),VI XII(int'l), XIVb(int'l)	2001	3,700	2,322	62.8	1,869	80.5
			2002	4,600	2,974	64.7	1,789	60.2
			2003	1,808	1,084	60.0	1,025	94.6
			2004	848	508	59.9	506	99.6
			2005	721	485	67.3	401	82.7
	Haddock	Vb(EU),VI XII(int'l), XIVb(int'l)	2001	13,900	10,720	77.1	7,343	68.5
			2002	14,100	10,996	78.0	7,377	67.1
			2003	8,675	6,455	74.4	6,378	98.8
			2004	6,503	5,304	81.6	3,424	64.6
			2005	8,302	7,081	85.3	3,240	45.8
	Whiting	Vb(EU),VI XII(int'l), XIVb(int'l)	2001	4,000	2,580	64.5	1,737	67.3
			2002	3,500	2,157	61.6	1,144	53.0
			2003	2,000	1,285	64.3	805	62.6
			2004	1,600	1,032	64.5	459	44.5
			2005	1,600	917	57.3	164	17.9
	Saithe	Vb(EU),VI XII(int'l), XIVb(int'l)	2001	9,000	2,955	32.8	2,649	89.6
			2002	14,000	3,211	22.9	1,918	59.7
			2003	17,119	3,029	17.7	1,475	48.7
			2004	19,713	3,488	17.7	1,599	45.8
			2005	15,044	3,792	25.2	2,009	53.0
	Plaice	Vb(EU),VI XII(int'l), XIVb(int'l)	2001	1,920	1,170	60.9	508	43.4
			2002	1,728	1,050	60.8	342	32.6
			2003	1,534	920	60.0	255	27.7
			2004	1,227	746	60.8	135	18.1
			2005	982	597	60.8	59	9.9
	Sole	Vb(EU),VI XII(int'l), XIVb(int'l)	2001	140	30	21.4	9	31.0
			2002	125	25	20.0	6	24.0
			2003	106	21	19.8	7	33.3
			2004	85	17	20.0	4	23.5
			2005	68	14	20.6	2	

Table 15. continued

Area	Species	Sea area	Year	EU total		UK quota		UK uptake		
				allowable catch	After exchanges	% of TAC	Tonnes	% of quota		
West of Scotland	Herring	Vb(EU), Vla(N),Vib	2001	35,700	21,570	60.4	21,795	101.0		
			2002	35,700	21,571	60.4	20,926	97.0		
			2003	29,340	17,728	60.4	17,116	96.5		
			2004	29,340	17,776	60.6	17,723	99.7		
			2005	29,440	17,788	60.4	17,439	98.0		
	Mackerel	II(excl EU,Ice) Vb(EU),VI,VII, VIII(excl c), XII(intl), XIVb(intl)	2001	337,639	197,099	58.4	197,813	100.4		
			2002	345,012	202,139	58.6	199,237	98.6		
			2003	310,808	187,596	60.4	182,161	97.1		
			2004	297,595	175,164	58.9	173,129	98.8		
			2005	217,477	128,690	59.2	127,929	99.4		
	Herring	Vla(Clyde)	2001	1,000	1,000	100.0	437	43.7		
			2002	1,000	1,000	100.0	46	4.6		
			2003	1,000	1,000	100.0	328	32.8		
			2004	1,000	1,000	100.0	30	3.0		
			2005	1,000	996	99.6	333	33.4		
	Horse mackerel (inc Biscay)	Vb(EU),VI,VII, VIII(excl c), XII(intl), XIVb(intl)	2001	233,000	23,233	10.0	16,103	69.3		
			2002	143,000	13,040	9.1	10,887	83.5		
			2003	130,000	7,555	5.8	7,095	93.9		
			2004	131,879	10,427	7.9	9,680	92.8		
			2005	133,223	6,598	5.0	6,178	93.6		
	Blue whiting	Vb(EU),VI,VII, VIII(excl c), XII(intl)	2001	194,360	52,103	26.8	51,889	99.6		
			2002	121,845	31,548	25.9	28,874	91.5		
			2003	121,935	29,018	23.8	19,265	66.4		
			2004	209,653	105,130	50.1	59,798	56.9		
			2005	539,006	109,815	20.4	109,102	99.4		
Hake	Vb(EU),VI,VII, XII(intl), XIVb(intl)	2001	13,920	2,653	19.1	2,469	93.1			
		2002	15,118	2,685	17.8	2,386	88.9			
		2003	16,823	3,011	17.9	2,401	79.7			
		2004	21,926	3,318	15.1	2,619	78.9			
		2005	23,888	3,896	16.3	3,046	78.2			
Area VII	Cod	VIIa	2001	2,100	925	44.0	902	97.5		
			2002	3,200	1,377	43.0	1,166	84.7		
			2003	1,950	612	31.4	532	86.9		
			2004	2,150	846	39.3	662	78.3		
			2005	2,150	819	38.1	599	73.1		
	Cod	VII(excl a),VIII IX,X	2001	10,500	1,237	11.8	1,110	89.7		
			2002	8,700	802	9.2	760	94.8		
			2003	6,700	547	8.2	482	88.1		
			2004	5,700	490	8.6	398	81.2		
			2005	6,200	532	8.6	491	92.3		
	Haddock	VII,VIII, IX,X	2001	15,250	2,383	15.6	2,856	119.8		
			2002	9,300	1,436	15.4	910	63.4		
			2003	8,185	789	9.6	672	85.2		
			2004	9,600	847	8.8	743	87.7		
			2005	11,520	1,189	10.3	642	54.0		
	Whiting	VIIa	2001	1,390	685	49.3	509	74.3		
			2002	1,000	443	44.3	312	70.4		
			2003	500	192	38.4	162	84.4		
			2004	514	199	38.7	86	43.2		
			2005	514	199	38.7	47	23.6		
	Whiting	VII(excl a)	2001	21,000	1,110	5.3	1,046	94.2		
			2002	31,700	3,402	10.7	971	28.5		
			2003	31,700	3,302	10.4	879	26.6		
			2004	27,000	2,823	10.5	689	24.4		
			2005	21,600	2,485	11.5	566	22.8		
Saithe	VII,VIII, IX,X	2001	5,600	805	14.4	301	37.4			
		2002	8,710	1,340	15.4	296	22.1			
		2003	8,710	1,337	15.4	364	27.2			
		2004	6,968	1,069	15.3	343	32.1			
		2005	5,574	855	15.3	210	24.6			
Plaice	VIIa	2001	2,238	924	41.3	605	65.5			
		2002	2,400	1,223	51.0	577	47.2			
		2003	1,675	478	28.5	419	87.7			
		2004	1,340	464	34.6	372	80.2			
		2005	1,608	590	36.7	422	71.5			
Plaice	VIIde	2001	6,000	1,665	27.8	1,419	85.2			
		2002	6,690	1,856	27.7	1,807	97.4			
		2003	5,970	1,790	30.0	1,733	96.8			
		2004	6,060	1,762	29.1	1,482	84.1			
		2005	5,151	1,477	28.7	1,290	87.3			
Plaice	VIIfg	2001	755	180	23.8	135	75.0			
		2002	680	119	17.5	105	88.2			
		2003	660	155	23.5	127	81.9			
		2004	560	110	19.6	87	79.1			
		2005	476	69	14.5	55	79.7			
Plaice	VIIhjk	2001	1,215	150	12.3	72	48.0			
		2002	970	146	15.1	60	41.1			
		2003	582	170	29.2	57	33.5			
		2004	466	72	15.5	36	50.0			
		2005	466	58	12.4	28	48.3			
Sole	VIIa	2001	1,190	264	22.2	197	74.6			
		2002	1,100	242	22.0	168	69.4			
		2003	1,010	238	23.6	220	92.4			
		2004	800	188	23.5	107	56.9			
		2005	960	146	15.2	103	70.5			
Sole	VII d	2001	4,790	964	20.1	785	81.4			
		2002	5,200	1,096	21.1	976	89.1			
		2003	5,400	1,147	21.2	1,113	97.0			
		2004	5,900	1,170	19.8	1,102	94.2			
		2005	5,700	1,170	20.5	558	47.7			
Sole	VIIe	2001	600	355	59.2	378	106.5			
		2002	525	288	54.9	290	100.7			
		2003	394	235	59.6	235	100.0			
		2004	300	179	59.7	172	96.1			
		2005	865	511	59.1	506	99.0			
Area VII	Sole	VIIfg	2001	1,112	318	28.6	286	89.9		
			2002	1,070	319	29.8	318	99.7		
			2003	1,240	350	28.2	342	97.7		
			2004	1,050	293	27.9	283	96.6		
			2005	1,000	251	25.1	217	86.5		
			Sole	VIIhjk	2001	650	110	16.9	109	99.1
					2002	650	141	21.7	125	88.7
					2003	390	80	20.5	78	97.8
					2004	390	80	20.5	79	99.0
					2005	650	141	21.7	112	79.4
			Norway lobster	VII	2001	18,900	6,220	32.9	5,311	85.4
					2002	17,790	5,526	31.1	5,111	92.5
					2003	17,790	5,796	32.6	4,782	82.5
					2004	17,450	5,709	32.7	5,174	90.6
					2005	19,544	6,507	33.3	5,546	85.2
			Anglers	VII	2001	23,810	4,284	18.0	3,092	72.2
					2002	18,600	3,876	20.8	3,540	91.3
					2003	15,810	3,651	23.1	3,485	95.5
					2004	20,902	4,074	19.5	3,722	91.4
					2005	25,082	5,047	20.1	4,074	80.7
			Megrin	VII	2001	16,466	2,407	14.6	1,609	66.8
					2002	13,350	2,124	15.9	1,830	86.2
					2003	14,336	2,265	15.8	1,818	80.3
					2004	18,099	2,772	15.3	1,705	61.5
					2005	19,263	3,039	15.8	1,868	61.5
Pollack (Lythe)	VII	2001	17,000	2,960	17.4	1,788	60.4			
		2002	17,000	2,934	17.3	1,961	66.8			
		2003	17,000	2,961	17.4	1,750	59.1			
		2004	17,000	2,964	17.4	1,650	55.7			
		2005	17,000	2,964	17.4	1,622	54.7			
Herring	VIIa	2001	6,900	5,100	73.9	4,141	81.2			
		2002	4,800	3,525	73.4	2,473	70.2			
		2003	4,800	3,550	74.0	2,736	77.1			
		2004	4,800	2,674	55.7	2,482	92.8			
		2005	4,800	3,640	75.8	3,522	96.8			
Herring	VIIe,f	2001	1,025	500	48.8	139	27.8			
		2002	1,000	500	50.0	167	33.4			
		2003	1,000	500	50.0	335	67.0			
		2004	1,000	500	50.0	246	49.2			
		2005	1,000	467	46.7	264	56.5			
Herring	VIIghjk	2001	20,129	-	-	-	-			
		2002	8,000	10	0.1	9	90.0			
		2003	13,000	16	0.1	14	87.5			
		2004	13,000	18	0.1	1	5.6			
		2005	13,000	18	0.1	1	5.6			
Sprat	VIIde	2001	12,000	6,300	52.5	1,334	21.2			
		2002	12,000	6,300	52.5	1,196	19.0			
		2003	9,600	5,040	52.5	1,368	27.1			
		2004	9,600	5,040	52.5	836	16.6			
		2005	7,680	4,032	52.5	1,635	40.6			
Norway	Cod	I, II (Norway)	2001	16,350	7,708	47.1	7,080	91.9		
			2002	16,355	7,699	47.1	7,629	99.1		
			2003	16,353	7,688	47.0	7,470	97.2		
			2004	20,120	7,824	38.9	7,523	96.2		
			2005	19,499	9,140	46.9	8,400	91.9		
	Haddock	I, II (Norway)	2001	1,850	1,060	57.3	781	73.7		
			2002	1,850	1,041	56.3	629	60.4		
			2003	2,200	1,198	54.5	667	55.7		
			2004	2,200	897	40.8	810	90.3		
			2005	2,260	1,485	65.7	1,164	78.4		
	Saithe	I, II (Norway)	2001	3,234	328	10.1	334	101.8		
			2002	3,240	294	9.1	257	87.4		
			2003	3,600	252	7.0	230	91.3		
			2004	3,600	701	19.5	513	73.2		
			2005	3,600	666	18.5	587	88.1		
	Redfish	I, II (Norway)	2001	3,000	300	10.0	70	23.3		
			2002	3,000	300	10.0	110	36.7		
			2003	1,000	100	10.0	55	55.0		
			2004	1,000	100	10.0	41	41.0		
			2005	1,500	150	10.0	84	56.0		
	Greenland halibut	I, II (Norway)	2001	100	50	50.0	39	78.0		
			2002	100	39	39.0	13	33.3		
			2003	100	50	50.0	9	18.0		
			2004	100	50	50.0	5	10.0		
			2005	100	50	50.0	21	42.0		
Other species	I, II (Norway)	2001	450	240	53.3	21	8.8			
		2002	450	240	53.3	67	27.9			
		2003	450	240	53.3	37	15.4			
		2004	450	240	53.3	7	2.9			
		2005	450	240	53.3	93	38.8			
Herring	I, II	2001	73,840	16,460	22.3	11,740	71.3			
		2002	73,840	16,460	22.3	7,093	43.1			
		2003	35,500	1						

Table 15. continued

Area	Species	Sea area	Year	EU total allowable catch	UK quota		UK uptake	
					After exchanges	% of TAC	Tonnes	% of quota
Faroes	Cod/haddock	Vb (Faroes)	2001	500	455	91.0	446	98.0
			2002	500	430	86.0	420	97.7
			2003	500	464	92.8	411	88.6
			2004	500	465	93.0	437	94.0
			2005	500	480	96.0	447	93.1
	Saithe	Vb (Faroes)	2001	2,500	680	27.2	649	95.4
			2002	2,500	630	25.2	549	87.1
			2003	2,500	767	30.7	676	88.1
			2004	2,500	863	34.5	816	94.6
			2005	2,500	1,069	42.8	1,010	94.5
	Redfish	Vb (Faroes)	2001	7,000	275	3.9	151	54.9
			2002	7,000	120	1.7	86	71.7
			2003	6,300	157	2.5	41	26.1
			2004	6,300	1,867	29.6	140	7.5
			2005	4,000	854	21.4	106	12.4
	Ling/blue ling	Vb (Faroes)	2001	3,600	180	5.0	119	66.1
			2002	3,600	250	6.9	219	87.6
			2003	3,240	244	7.5	192	78.7
			2004	3,240	444	13.7	284	64.0
			2005	3,240	334	10.3	302	90.4
Flatfish	Vb (Faroes)	2001	1,000	680	68.0	113	16.6	
		2002	1,000	680	68.0	187	27.5	
		2003	1,000	680	68.0	201	29.6	
		2004	1,000	680	68.0	111	16.3	
		2005	600	408	68.0	93	22.8	
Other species	Vb (Faroes)	2001	760	180	23.7	133	73.9	
		2002	760	180	23.7	132	73.3	
		2003	760	180	23.7	140	77.8	
		2004	760	221	29.1	224	101.4	
		2005	760	319	42.0	301	94.4	
Blue whiting	Vb (Faroes)	2001	25,000	4,944	19.8	0	0.0	
		2002	0	0	0.0	0	0.0	
		2003	16,000	40	0.3	30	75.0	
		2004	16,000	4,040	25.3	807	20.0	
		2005	16,000	2,806	17.5	2,805	100.0	

Source : EU Commission

UK figures are as reported to the EC Commission in 2004. This data, however, is still provisional and does not take into account flexibility arrangements, or small adjustments required to UK landings abroad by other member states.

Area	Species	Sea area	Year	EU total allowable catch	UK quota		UK uptake	
					After exchanges	% of TAC	Tonnes	% of quota
Greenland	Redfish	V, XIV (Greenland)	2001	25,000	175	0.7	179	102.3
			2002	26,500	175	0.7	36	20.6
			2003	25,500	600	2.4	271	45.2
			2004	25,500	338	1.3	338	100.0
			2005	15,938	284	1.8	108	38.0
	Greenland halibut	V, XIV (Greenland)	2001	4,250	212	5.0	100	47.2
			2002	5,455	354	6.5	201	56.8
			2003	4,800	714	14.9	634	88.8
			2004	4,800	1,615	33.6	1572	97.3
			2005	6,300	271	4.3	272	100.4
Roundnose Grenadier	V,XIV,NAFO1 (Greenland)	2001	1,715	86	5.0	2	2.3	
		2002	2,000	86	4.3	1	1.2	
		2003	2,000	86	4.3	1	1.2	
		2004	2,000	86	4.3	0	0.0	
		2005	1,035	-	-	-	-	
Iceland	Redfish	Va (Iceland)	2001	3,000	1,460	48.7	608	41.6
			2002	3,000	1,310	43.7	372	28.4
			2003	3,000	1,410	47.0	1400	99.3
			2004	3,000	1,710	57.0	972	56.8
			2005	3,000	1,625	54.2	1125	69.2
NEAFC	Redfish		2001	13,734	23	0.2	2	8.7
			2002	13,883	171	1.2	4	2.3
			2003	16,452	2	0.0	1	50.0
			2004	16,563	-	-	-	-
			2005	15,513	17	0.1	6	35.3

Chart 6. UK percentage uptake of main quota stocks, 2005

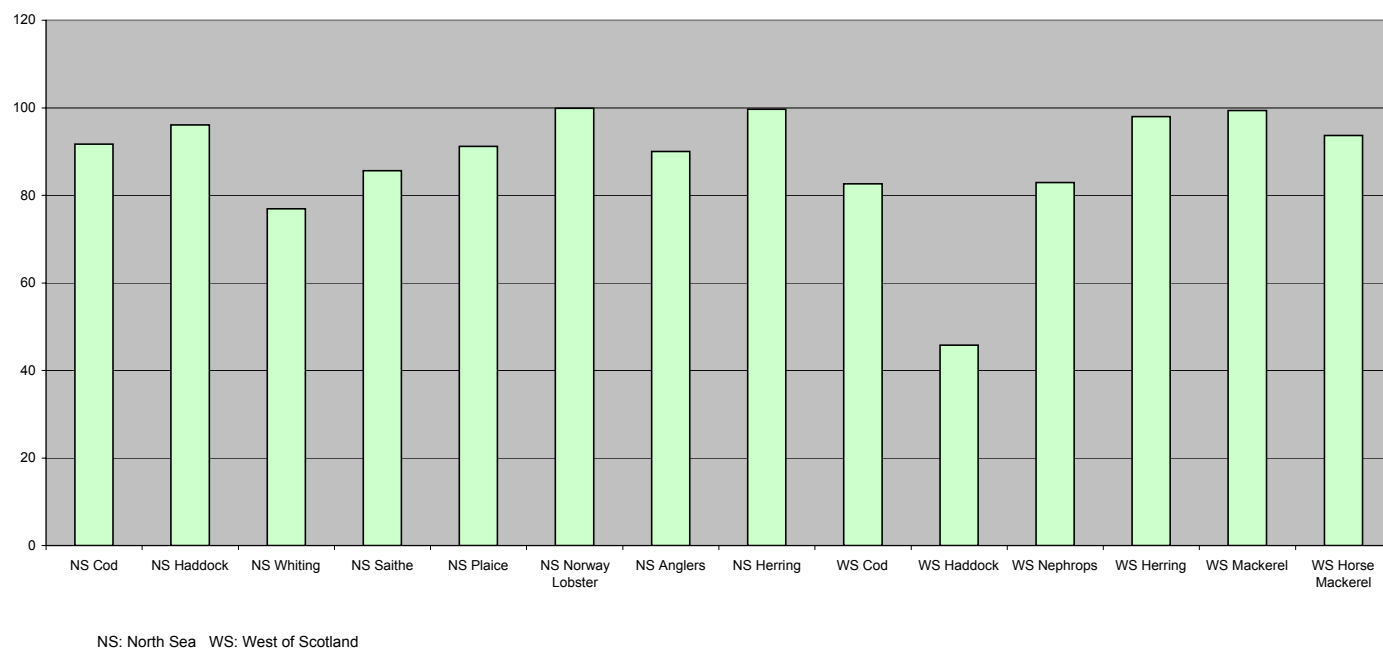


Table 16. Fixed quota units (thousands), by sea area and country, 1st January 2006

	North Sea (1)			West of Scotland (2)			Area VII		
	Scottish vessels	Other UK vessels	Held in PO (3) pools	Scottish vessels	Other UK vessels	Held in PO (3) pools	Scottish vessels	Other UK vessels	Held in PO (3) pools
Demersal	1114	358	935	269	137	197	19	173	72
Pelagic	588	181	30	2667	870	57	0	26	1
Shellfish	62	16	53	38	22	53	3	37	20
Total	1764	555	1018	2974	1029	307	22	236	93

(1) includes southern North Sea herring (2) includes western hake (3) Producer Organisations



Table 17. Live weight and value of landings by species type, 2001 to 2005

		Tonnes (thousand)					Value (£ million) (1)					Value (£ million) (2005 prices)						
		2001	2002	2003	2004	2005	2001	2002	2003	2004	2005	2001	2002	2003	2004	2005		
Landings by UK vessels into:	Scotland	Demersal	121.8	122.0	93.3	93.2	94.6	132.6	119.3	92.9	96.2	108.3	147.7	128.9	97.5	98.2	108.3	
		Pelagic	116.4	143.4	163.3	191.6	217.2	31.6	48.2	48.9	63.2	91.9	35.2	52.1	51.3	64.5	91.9	
		Shellfish	51.5	50.8	49.0	52.5	54.5	92.5	92.1	89.6	99.2	108.5	103.0	99.5	94.0	101.3	108.5	
		Total	289.7	316.3	305.6	337.2	366.3	256.7	259.6	231.4	258.6	308.7	285.9	280.4	242.7	264.1	308.7	
		Rest of UK	Demersal	53.7	47.5	40.2	37.8	34.4	84.9	78.5	74.4	66.4	64.3	94.5	84.8	78.0	67.8	64.3
	Pelagic	30.2	22.0	18.4	12.9	21.0	7.3	4.8	4.9	4.8	7.8	8.1	5.2	5.2	4.9	7.8		
	Shellfish	84.7	79.9	80.3	73.6	70.0	74.8	71.7	80.9	74.0	75.2	83.3	77.4	84.8	75.6	75.2		
	Total	168.6	149.4	139.0	124.3	125.4	167.0	155.0	160.2	145.2	147.3	185.9	167.4	168.0	148.3	147.3		
	Landings by foreign vessels into:	Scotland	Demersal	28.9	39.4	37.8	36.3	30.0	40.5	49.8	45.1	44.8	42.3	45.1	53.8	47.3	45.7	42.3
			Pelagic	30.5	22.1	35.1	38.6	44.2	4.4	5.6	6.3	9.1	18.6	4.9	6.0	6.6	9.3	18.6
Shellfish			0.1	0.0	0.2	0.3	0.5	0.2	0.1	0.3	0.5	0.6	0.2	0.1	0.3	0.5	0.6	
Total			59.5	61.6	73.1	75.2	74.7	45.0	55.5	51.7	54.4	61.6	50.1	60.0	54.2	55.6	61.6	
Rest of UK			Demersal	8.1	7.8	30.4	45.4	70.7	17.5	17.0	34.4	53.6	100.8	19.5	18.4	36.1	54.7	100.8
Pelagic		3.3	1.4	0.6	0.0	0.4	1.0	0.6	0.2	0.0	0.3	1.1	0.6	0.2	0.0	0.3		
Shellfish		0.7	1.5	2.0	1.6	1.3	0.9	2.3	2.9	2.6	1.7	1.0	2.5	3.0	2.7	1.7		
Total		12.1	10.7	32.9	47.0	72.4	19.3	19.8	37.5	56.2	102.7	21.5	21.4	39.4	57.4	102.7		
Landings by UK vessels into UK		Demersal	175.5	169.5	133.5	131.0	129.0	217.5	197.8	167.3	162.6	172.6	242.2	213.7	175.5	166.0	172.6	
		Pelagic	146.6	165.4	181.7	204.5	238.2	38.9	53.0	53.8	68.0	99.7	43.3	57.3	56.5	69.4	99.7	
	Shellfish	136.2	130.7	129.3	126.1	124.5	167.3	163.8	170.5	173.2	183.8	186.3	176.9	178.8	176.9	183.8		
	Total	458.3	465.6	444.6	461.5	491.7	423.7	414.7	391.6	403.7	456.0	471.8	448.0	410.8	412.3	456.0		
	All landings into UK	Demersal	212.6	216.7	201.7	212.7	229.7	275.4	264.6	246.8	261.0	315.7	306.7	285.8	258.9	266.5	315.7	
	Pelagic	180.5	188.9	217.4	243.1	282.8	44.2	59.2	60.3	77.1	118.6	49.3	63.9	63.3	78.7	118.6		
	Shellfish	138.9	132.2	131.5	128.0	126.3	168.4	166.2	173.7	176.3	186.1	187.5	179.5	182.2	180.0	186.1		
	Total	530.0	538.0	550.6	583.7	638.8	488.0	489.9	480.8	514.4	620.3	543.5	529.2	504.4	525.3	620.3		
	Landings by UK vessels into Scotland as per cent of landings by UK vessels into UK	Demersal	69.4	72.0	69.9	71.1	73.3	61.0	60.3	55.5	59.2	62.7						
		Pelagic	79.4	86.7	89.9	93.7	91.2	81.3	90.9	90.8	92.9	92.2						
Shellfish		37.8	38.9	37.9	41.6	43.8	55.3	56.2	52.6	57.3	59.1							
Total		63.2	67.9	68.7	73.1	74.5	60.6	62.6	59.1	64.1	67.7							
Landings into Scotland as per cent of landings into UK	Demersal	70.9	74.5	65.0	60.9	54.2	62.8	63.9	55.9	54.0	47.7							
	Pelagic	81.4	87.6	91.3	94.7	92.4	81.3	90.9	91.5	93.8	93.2							
	Shellfish	37.7	38.4	37.4	41.3	43.5	55.0	55.5	51.8	56.6	58.7							
	Total	65.9	70.2	68.8	70.6	69.0	61.8	64.3	58.9	60.8	59.7							
Scottish based vessels	- landings into UK	Demersal	117.3	117.4	89.2	88.1	88.3	127.2	114.9	91.2	89.7	101.6	141.7	124.1	95.7	91.6	101.6	
		Pelagic	131.2	150.3	163.3	191.9	216.9	35.3	49.9	49.2	63.2	91.9	39.3	53.9	51.6	64.5	91.9	
		Shellfish	53.3	51.7	50.5	54.1	54.7	94.1	92.5	91.6	101.5	110.0	104.8	99.9	96.1	103.7	110.0	
		Total	301.9	319.4	303.1	334.1	359.9	256.7	257.4	232.0	254.4	303.4	285.9	278.0	243.4	259.8	303.4	
		- landings abroad	Demersal	12.9	15.3	10.4	13.1	11.4	23.8	21.7	18.0	21.7	21.4	26.5	23.4	18.9	22.2	21.4
	Pelagic	173.2	110.8	77.6	79.4	111.2	61.2	47.9	28.6	22.0	22.5	68.2	51.7	30.0	22.5	22.5		
	Shellfish	0.2	0.4	0.4	0.8	0.6	0.9	1.3	0.9	2.1	1.8	1.0	1.4	0.9	2.1	1.8		
	Total	186.3	126.5	88.4	93.3	123.2	85.9	70.9	47.5	45.9	45.6	95.7	76.6	49.8	46.9	45.6		
	Other UK based vessels	- landings into UK	Demersal	58.2	52.1	44.3	42.9	40.6	90.3	82.9	76.1	72.9	71.0	100.5	89.5	79.8	74.4	71.0
			Pelagic	15.4	15.1	18.4	12.6	21.4	3.6	3.1	4.6	4.8	7.8	4.0	3.3	4.9	4.9	7.8
Shellfish			82.9	79.0	78.8	72.0	69.8	73.2	71.3	78.9	71.7	73.8	81.5	77.0	82.7	73.2	73.8	
Total			156.4	146.3	141.5	127.4	131.8	167.0	157.3	159.6	149.3	152.6	185.9	169.9	167.4	152.5	152.6	
- landings abroad			Demersal	30.0	30.7	28.3	28.6	24.6	36.8	35.4	34.4	33.7	35.0	41.0	38.2	36.0	34.4	35.0
Pelagic		55.7	56.1	62.2	65.4	60.7	17.0	15.5	32.5	19.3	21.2	18.9	16.7	34.1	19.7	21.2		
Shellfish		7.4	5.7	7.9	4.9	7.7	10.9	8.0	14.6	8.6	13.3	12.1	8.6	15.3	8.8	13.3		
Total		93.1	92.5	98.4	98.9	92.9	64.8	58.9	81.5	61.7	69.5	72.2	63.6	85.4	63.0	69.5		
Landings by UK vessels		Demersal	218.4	215.5	172.2	172.7	164.9	278.1	254.9	219.6	218.0	229.0	309.7	275.3	230.4	222.6	229.0	
		Pelagic	375.5	332.3	321.5	349.3	410.1	117.1	116.4	115.0	109.3	143.3	130.4	125.7	120.6	111.6	143.3	
	Shellfish	143.8	136.8	137.6	131.8	132.8	179.1	173.1	185.9	183.9	198.9	199.5	187.0	195.0	187.8	198.9		
	Total	737.7	684.7	631.4	653.7	707.8	574.4	544.5	520.5	511.3	571.2	639.6	588.2	546.0	522.1	571.2		
Percent landed by Scottish based vessels	Demersal	59.6	61.6	57.8	58.6	60.5	54.3	53.6	49.7	51.1	53.7							
	Pelagic	81.1	78.6	74.9	77.7	80.0	82.4	84.0	67.7	78.0	79.8							
	Shellfish	37.2	38.1	37.0	41.7	41.6	53.0	54.2	49.8	56.3	56.2							
	Total	66.2	65.1	62.0	65.4	68.2	59.6	60.3	53.7	58.7	61.1							

Table 18. Voyages and landings by Scottish based vessels by landing district, 2004 and 2005

Voyages ending in district:	2004			2005		
	Number	Tonnes	Value (£000)	Number	Tonnes	Value (£000) (1)
Eyemouth	4,849	3,398	4,792	4,713	2,850	4,718
Pittenweem	5,249	1,415	2,739	5,431	1,449	3,306
Aberdeen	2,183	21,529	15,099	1,816	24,665	14,518
Peterhead	2,409	112,180	62,670	2,438	115,688	79,512
Fraserburgh	5,190	42,379	36,588	5,317	46,101	51,049
Buckie	3,171	2,782	4,664	3,395	2,168	4,262
Wick	1,956	13,133	14,938	1,936	10,559	13,537
Orkney	1,807	3,257	4,630	1,940	3,588	5,355
Shetland	2,171	89,513	37,042	2,233	112,083	54,466
Stornoway	7,032	4,022	9,369	6,330	3,635	8,789
Lochinver	1,884	3,833	7,213	1,687	3,096	7,627
Kinlochbervie	891	6,024	7,631	729	4,651	7,188
Ullapool	2,273	3,733	6,212	2,138	3,745	6,800
Mallaig	4,003	5,874	7,323	3,170	4,507	6,671
Oban	4,349	3,013	5,939	3,648	2,463	5,098
Campbeltown	8,300	4,662	7,056	8,800	3,987	7,601
Ayr	4,351	3,775	4,947	4,560	5,073	5,840
Portree	6,219	1,920	6,385	5,813	2,069	6,249
Other UK	1,658	7,616	9,210	1,926	7,475	10,814
Denmark	36	33,129	3,408	48	60,730	8,517
Netherlands	571	8,972	13,936	547	7,645	13,080
Norway	77	36,576	17,289	35	16,670	10,255
Spain	153	3,464	8,200	166	3,317	8,096
Other foreign ports	61	11,135	3,062	73	34,846	5,698
Total	70,843	427,333	300,342	68,889	483,062	349,045

(1) When the Register of Buyers and Sellers (RBS) was introduced in September 2005, Sales Notes were not initially required for sales of shellfish and information on the value of such landings is consequently missing. The value has therefore been estimated for a number of landings, mostly shellfish, relating to voyages starting on or after 1 September 2005.

**Table 19. Liveweight and value of landings into the UK by UK vessels , by main species (over £5m value in 2005) and country of landing, 2001 to 2005**

		Tonnes (thousand)					Value (£ million) (1)				
		2001	2002	2003	2004	2005	2001	2002	2003	2004	2005
UK vessels into: Scotland	Cod	17.4	17.0	9.0	7.2	7.3	23.6	23.8	14.0	12.4	13.0
	Haddock	36.5	46.8	37.9	42.7	45.3	31.2	30.6	25.3	30.4	36.7
	Monks	11.8	10.1	7.2	7.8	9.6	26.5	21.4	14.8	16.4	23.9
	Herring	36.0	38.2	51.9	53.5	71.4	8.6	6.2	6.4	6.5	14.4
	Mackerel	54.9	89.5	98.5	110.8	116.0	21.1	40.3	41.5	55.1	75.9
	Crabs	11.1	10.1	9.1	9.7	10.6	12.9	12.0	10.8	10.9	12.5
	Nephrops	20.3	21.4	20.6	22.9	25.2	53.1	56.4	52.0	57.2	67.9
	Scallops	9.8	9.1	10.1	11.5	9.8	17.2	14.8	15.7	18.3	15.7
	Other	91.9	73.9	61.4	71.1	71.1	62.6	54.1	51.0	51.3	48.6
	Total	289.7	316.3	305.6	337.2	366.3	256.7	259.6	231.4	258.6	308.7
England and Wales	Cod	9.9	7.6	6.1	7.4	5.9	12.6	9.4	8.0	9.2	7.8
	Dover sole	2.1	2.1	2.2	2.0	1.8	13.1	12.6	13.9	12.8	12.4
	Monks	3.1	2.8	2.7	2.8	2.8	7.0	6.0	5.7	6.0	6.4
	Cockles	18.9	14.2	26.8	12.8	13.1	3.8	4.1	16.9	10.0	8.0
	Crabs	13.5	12.7	14.1	11.5	9.0	14.7	13.7	14.2	12.2	10.9
	Lobsters	0.8	0.8	1.0	0.9	0.9	7.8	8.1	9.3	8.0	7.6
	Nephrops	3.3	2.4	2.7	2.8	3.9	6.8	4.8	5.3	5.9	8.4
	Scallops	9.1	9.2	8.6	8.9	10.4	11.9	12.6	12.7	12.7	16.4
	Wheiks	9.6	7.8	8.4	10.6	10.2	3.9	3.6	4.1	5.8	6.2
	Other	75.2	69.7	48.2	50.6	52.4	66.6	62.3	54.3	48.1	48.6
Total	145.5	129.4	120.7	110.5	110.4	148.0	137.4	144.5	130.8	132.5	
Northern Ireland	Nephrops	4.8	4.6	4.4	4.7	4.7	8.5	7.5	6.7	7.2	7.8
	Other	18.3	15.3	13.8	9.1	10.3	10.4	10.2	9.0	7.1	7.0
	Total	23.1	19.9	18.2	13.8	15.0	18.9	17.7	15.7	14.3	14.7
UK	Cod	28.1	25.7	15.5	15.2	13.8	37.4	35.0	22.7	22.7	21.8
	Dover sole	2.1	2.1	2.3	2.0	1.8	13.2	12.8	14.1	12.9	12.5
	Haddock	42.3	51.9	40.7	45.4	47.6	36.3	34.6	27.5	32.7	38.7
	Hake	2.2	2.1	1.9	2.2	2.6	5.3	5.6	4.1	5.3	6.8
	Lemon sole	3.6	2.3	2.2	2.1	2.1	9.9	7.3	6.7	6.0	6.4
	Megrims	4.3	4.0	3.6	3.4	3.3	7.0	8.0	8.2	7.7	8.3
	Monks	15.1	13.1	10.1	10.8	12.6	33.8	27.9	20.8	22.7	30.6
	Saithe	9.7	9.9	8.5	9.0	11.4	4.3	4.1	3.5	3.8	5.4
	Whiting	15.1	11.4	8.2	7.4	8.9	9.9	6.6	5.1	5.0	5.7
	Herring	43.8	42.5	55.2	56.2	76.4	10.5	6.9	7.0	7.6	15.9
	Mackerel	63.9	96.6	106.5	115.3	120.6	23.9	42.7	44.6	57.0	78.3
	Cockles	19.0	14.3	26.8	12.9	13.2	3.8	4.2	16.9	10.1	8.1
	Crabs	25.0	23.3	19.2	21.7	20.0	27.8	26.0	29.1	23.5	23.7
	Lobsters	1.1	1.2	23.8	1.4	1.3	11.4	11.7	25.5	12.6	12.2
	Nephrops	28.4	28.4	1.3	30.4	33.8	68.4	68.8	12.8	70.3	84.0
	Scallops	19.5	18.8	27.6	21.1	20.7	29.9	28.0	64.0	31.8	32.7
	Squid	1.4	2.1	3.0	2.9	2.6	3.9	4.9	6.8	7.8	6.3
	Wheiks	11.3	8.7	9.3	12.1	11.2	4.6	4.0	4.5	6.6	6.7
	Other	122.4	107.4	78.9	90.1	87.9	82.4	75.6	67.6	57.5	51.9
	Total	458.3	465.6	444.6	461.5	491.7	423.7	414.7	391.6	403.7	456.0

**Table 20. Liveweight and value of landings into Scotland by UK vessels, by main species (value of £2.0m in 2005) 2001 to 2005**

	Tonnes					Value (£ 000) (1)					£ per tonne (standard weight)				
	2001	2002	2003	2004	2005	2001	2002	2003	2004	2005	2001	2002	2003	2004	2005
Cod	17,383	17,025	8,955	7,178	7,323	23,558	23,814	13,969	12,373	13,008	1,586	1,637	1,825	2,017	2,078
Haddock	36,458	46,842	37,862	42,696	45,282	31,167	30,642	25,266	30,432	36,747	992	759	774	827	941
Hake	976	677	525	947	1,530	2,320	1,744	1,150	2,060	4,069	2,757	2,987	2,540	2,524	3,084
Lemon sole	1,791	895	819	671	878	4,072	2,162	1,807	2,065	2,035	2,365	2,512	2,294	3,199	2,410
Ling	5,903	6,026	3,825	3,760	2,948	6,512	6,560	4,074	3,939	3,239	1,269	1,252	1,225	1,205	1,264
Megrims	2,875	2,531	2,174	1,962	1,842	4,231	4,195	4,418	4,018	3,812	1,545	1,740	2,134	2,150	2,173
Monks	11,847	10,086	7,248	7,807	9,628	26,460	21,432	14,761	16,371	23,946	2,811	2,686	2,546	2,571	3,103
Saithe	8,330	8,493	7,600	8,137	10,551	3,614	3,540	3,105	3,317	4,876	516	496	486	485	550
Whiting	12,266	8,849	6,516	5,472	5,753	8,266	5,215	4,228	3,957	4,199	761	666	733	817	825
Witches	2,440	2,036	2,239	1,995	1,430	2,423	2,294	3,128	3,472	2,564	1,033	1,172	1,453	1,810	1,864
Other demersal	21,519	18,558	15,544	12,547	7,413	19,966	17,708	16,952	14,188	9,798	1,046	1,073	1,251	1,295	1,514
Total demersal	121,788	122,019	93,306	93,174	94,579	132,590	119,307	92,856	96,192	108,293	1,258	1,132	1,152	1,195	1,332
Herring	35,957	38,231	51,909	53,510	71,385	8,614	6,219	6,401	6,519	14,446	240	163	123	122	202
Mackerel	54,947	89,515	98,496	110,757	115,970	21,084	40,256	41,474	55,065	75,939	384	450	421	497	655
Other pelagic	25,535	15,664	12,939	27,287	29,852	1,903	1,741	1,045	1,605	1,513	75	111	81	59	51
Total pelagic	116,438	143,411	163,344	191,555	217,206	31,600	48,217	48,920	63,189	91,897	271	336	299	330	423
Edible crabs	8,558	7,693	7,240	6,937	8,248	9,052	8,481	7,995	7,401	9,106	1,058	1,102	1,104	1,067	1,104
Lobsters	301	328	301	426	414	3,497	3,426	3,352	4,386	4,467	11,637	10,449	11,150	10,317	10,791
Nephrops	20,282	21,359	20,589	22,920	25,199	53,055	56,448	52,047	57,209	67,872	2,616	2,643	2,528	2,496	2,693
Queen scallops	5,533	6,766	4,457	2,408	4,157	2,324	2,561	1,736	1,119	2,010	420	378	389	465	483
Scallops	9,796	9,145	10,055	11,538	9,777	17,204	14,757	15,701	18,324	15,720	1,756	1,614	1,562	1,588	1,634
Squid	696	1,165	2,214	2,125	1,898	1,291	1,968	4,826	5,276	4,182	1,854	1,689	2,180	2,482	2,203
Velvet crabs	2,243	1,986	1,517	2,298	1,802	3,679	3,128	2,379	3,116	2,995	1,640	1,575	1,568	1,356	1,662
Other shellfish	4,084	2,392	2,616	3,861	2,981	2,419	1,354	1,612	2,359	2,194	592	566	616	611	738
Total shellfish	51,494	50,835	48,990	52,513	54,476	92,521	92,123	89,647	99,189	108,545	1,797	1,812	1,830	1,889	1,999
Total landings	289,721	316,265	305,640	337,242	366,260	256,711	259,647	231,424	258,571	308,736	939	866	790	797	875

(1) When the Register of Buyers and Sellers (RBS) was introduced in September 2005, Sales Notes were not initially required for sales of shellfish and information on the value of such landings is consequently missing. The value has therefore been estimated for a number of landings, mostly shellfish, relating to voyages starting on or after 1 September 2005.

Table 21. Liveweight and value (£) of landings into Scottish ports by UK vessels, by landing district and species type, 2001 to 2005

		2001		2002		2003		2004		2005	
		Tonnes	Value (£000)	Tonnes	Value (£000)	Tonnes	Value (£000)	Tonnes	Value (£000)	Tonnes	Value (£000)
Eyemouth	Demersal	1,682	1,604	2,825	2,487	1,882	1,917	2,472	2,181	1,776	1,853
	Pelagic	-	-	-	-	-	-	1	1	0	0
	Shellfish	1,054	2,288	998	2,209	1,002	2,535	1,295	3,090	1,235	3,248
	Total	2,737	3,893	3,823	4,696	2,884	4,452	3,768	5,271	3,010	5,101
Pittenweem	Demersal	133	116	80	62	24	19	103	125	5	5
	Pelagic	-	-	-	-	0	0	0	0	0	0
	Shellfish	1,003	1,769	942	1,836	892	1,887	1,313	2,615	1,444	3,301
	Total	1,137	1,884	1,021	1,898	916	1,905	1,416	2,740	1,449	3,306
Aberdeen	Demersal	13,001	13,103	15,373	13,333	12,463	10,670	12,494	10,169	11,573	10,934
	Pelagic	8,378	387	982	58	4	1	6,623	353	11,668	587
	Shellfish	1,153	2,559	1,206	2,701	1,557	2,863	2,695	4,933	1,922	3,663
	Total	22,532	16,049	17,561	16,093	14,023	13,535	21,812	15,455	25,164	15,184
Peterhead	Demersal	39,697	43,823	37,511	36,881	26,406	26,031	29,018	29,112	35,659	37,150
	Pelagic	35,450	9,887	53,389	17,397	61,559	20,020	82,007	28,353	79,058	37,114
	Shellfish	1,354	4,284	2,022	5,540	1,996	5,138	2,675	6,224	2,773	6,891
	Total	76,501	57,994	92,922	59,818	89,961	51,189	113,700	63,689	117,490	81,154
Fraserburgh	Demersal	10,579	10,586	12,896	9,960	11,794	9,379	12,156	9,880	12,475	13,012
	Pelagic	23,151	6,965	16,432	5,401	24,881	6,738	21,291	7,610	23,275	12,876
	Shellfish	6,665	13,977	6,657	14,882	7,320	15,059	9,222	19,485	10,955	26,219
	Total	40,395	31,529	35,985	30,244	43,994	31,176	42,670	36,975	46,705	52,107
Buckie	Demersal	1,015	1,071	1,742	1,730	1,483	1,595	887	946	667	894
	Pelagic	8	3	17	5	8	3	4	1	3	1
	Shellfish	1,541	2,620	1,191	2,122	1,663	3,094	1,980	3,844	1,919	3,975
	Total	2,563	3,695	2,950	3,856	3,154	4,692	2,871	4,791	2,589	4,870
Wick	Demersal	14,806	17,487	16,070	17,555	11,818	12,783	10,657	12,429	10,067	12,121
	Pelagic	190	60	94	28	6	1	12	5	12	5
	Shellfish	5,322	6,352	4,886	6,107	4,835	5,930	5,458	5,768	5,188	6,071
	Total	20,318	23,899	21,051	23,690	16,659	18,715	16,127	18,201	15,267	18,197
Orkney	Demersal	160	126	71	30	30	14	50	21	30	31
	Pelagic	-	-	1	0	1	0	1	0	3	3
	Shellfish	2,903	4,040	2,690	3,850	2,347	3,239	3,375	4,713	3,608	5,349
	Total	3,063	4,166	2,762	3,881	2,377	3,254	3,426	4,734	3,642	5,382
Shetland	Demersal	12,481	12,777	10,719	9,769	7,612	7,047	9,018	9,042	9,664	11,569
	Pelagic	46,355	13,789	69,116	24,860	73,986	21,828	80,005	26,619	102,191	41,165
	Shellfish	1,234	1,634	1,137	1,695	1,069	1,523	1,137	1,706	1,059	1,928
	Total	60,070	28,201	80,971	36,323	82,667	30,398	90,159	37,366	112,914	54,663
Stornoway	Demersal	624	437	593	412	530	337	318	242	172	169
	Pelagic	3	2	-	-	-	-	-	-	0	0
	Shellfish	3,741	9,079	3,714	8,650	3,670	8,331	3,705	9,127	3,465	8,627
	Total	4,368	9,518	4,307	9,062	4,199	8,668	4,022	9,370	3,637	8,796
Lochinver	Demersal	7,849	10,014	6,435	8,036	4,009	5,262	3,623	5,748	2,525	5,902
	Pelagic	89	26	71	18	6	3	-	-	-	-
	Shellfish	671	2,004	937	2,737	1,040	3,136	861	2,647	707	1,967
	Total	8,609	12,044	7,443	10,791	5,055	8,401	4,484	8,395	3,232	7,869
Kinlochbervie	Demersal	8,106	9,563	6,852	8,146	6,357	7,679	5,606	6,671	4,364	6,507
	Pelagic	70	14	154	37	37	9	2	0	8	2
	Shellfish	480	795	616	1,319	685	1,379	464	1,029	369	785
	Total	8,655	10,372	7,622	9,502	7,079	9,066	6,072	7,699	4,741	7,294
Ullapool	Demersal	5,962	6,192	6,479	6,909	5,122	6,239	4,061	6,636	3,770	5,902
	Pelagic	1,179	251	202	69	28	11	168	65	33	18
	Shellfish	1,883	3,836	1,810	4,199	1,706	3,861	1,484	3,476	1,417	3,741
	Total	9,025	10,279	8,491	11,176	6,856	10,111	5,713	10,178	5,220	9,661
Mallaig	Demersal	3,270	3,259	2,298	1,856	1,847	1,551	1,541	1,381	924	989
	Pelagic	1,409	194	2,662	275	2,543	280	1,440	182	953	126
	Shellfish	3,573	7,485	3,073	6,290	3,130	5,964	2,944	5,849	2,754	5,784
	Total	8,251	10,937	8,032	8,421	7,520	7,795	5,925	7,412	4,632	6,899
Oban	Demersal	537	547	627	565	255	201	136	159	299	390
	Pelagic	-	-	-	-	-	-	-	-	-	-
	Shellfish	4,624	8,300	4,321	7,662	3,438	6,447	3,185	6,181	3,047	5,843
	Total	5,161	8,846	4,948	8,228	3,693	6,647	3,320	6,340	3,346	6,233
Campbeltown	Demersal	290	254	245	208	159	116	98	72	68	61
	Pelagic	153	21	185	23	273	25	0	0	0	0
	Shellfish	5,062	8,493	4,086	7,338	3,992	7,153	5,063	7,551	4,454	8,439
	Total	5,505	8,768	4,516	7,570	4,424	7,294	5,162	7,624	4,523	8,501
Ayr	Demersal	1,149	1,128	832	981	850	1,319	751	1,156	476	714
	Pelagic	2	1	1	0	12	1	0	0	1	2
	Shellfish	6,840	5,753	8,428	6,389	6,628	5,721	3,911	4,761	6,084	6,439
	Total	7,990	6,881	9,261	7,370	7,490	7,041	4,663	5,916	6,561	7,155
Portree	Demersal	449	503	373	387	667	697	187	223	65	89
	Pelagic	-	-	105	45	1	0	-	-	-	-
	Shellfish	2,392	7,253	2,121	6,596	2,020	6,387	1,747	6,191	2,075	6,275
	Total	2,841	7,756	2,599	7,028	2,687	7,084	1,934	6,414	2,140	6,364
Total	Demersal	121,788	132,590	122,019	119,307	93,306	92,856	93,174	96,192	94,579	108,293
	Pelagic	116,438	31,600	143,411	48,217	163,344	48,920	191,555	63,189	217,206	91,897
	Shellfish	51,494	92,521	50,835	92,123	48,990	89,647	52,513	99,189	54,476	108,545
	Total	289,721	256,711	316,265	259,647	305,640	231,424	337,242	258,571	366,260	308,736

(1) When the Register of Buyers and Sellers (RBS) was introduced in September 2005, Sales Notes were not initially required for sales of shellfish and information on the value of such landings is consequently missing. The value has therefore been estimated for a number of landings, mostly shellfish, relating to voyages starting on or after 1 September 2005.

Table 22. Disposal of sea fish landed (1) into Scotland by UK vessels, 2001 to 2005

	Demersal					Pelagic					Shellfish				
	2001	2002	2003	2004	2005	2001	2002	2003	2004	2005	2001	2002	2003	2004	2005
Human consumption	119.0	117.8	90.7	91.1	94.0	101.2	137.5	154.6	169.6	187.5	51.5	50.8	49.0	52.5	54.5
Klondyked	-	-	-	0.0	0.0	-	0.1	-	0.0	0.0	-	-	-	0.0	-
Meal and oil	2.6	3.7	2.4	1.9	0.5	14.9	5.7	8.2	22.0	29.3	-	-	-	0.0	0.0
Dumped/ bait	0.1	0.4	0.1	0.1	0.1	0.1	-	0.4	0.0	0.1	-	-	-	0.0	0.0
Withdrawn	-	-	-	-	-	-	-	-	-	-	-	-	-	-	-
Other	0.1	0.1	-	0.0	0.0	0.2	0.2	0.2	-	0.2	-	-	-	0.0	0.0
Total	121.8	122.0	93.3	93.2	94.6	116.4	143.4	163.3	191.6	217.2	51.5	50.8	49.0	52.5	54.5

Table 23. Liveweight and value (£) of landings into Scotland by UK vessels, by landing district and main (2) species, 2005

	Eyemouth	
	Tonnes	£'000
Gurnards - Red	68	62
Haddock	1,389	1,440
Lemon sole	45	103
Plaice	29	22
Whiting	172	131
Other demersal	72	95
<b>Total demersal</b>	<b>1,776</b>	<b>1,853</b>
<b>Total pelagic</b>	<b>0</b>	<b>0</b>
Edible crabs	48	51
Nephrops	1,024	2,738
Scallops	56	90
Squid	74	182
Other shellfish	32	187
<b>Total shellfish</b>	<b>1,235</b>	<b>3,248</b>
<b>Total landings</b>	<b>3,010</b>	<b>5,101</b>

	Pittenweem	
	Tonnes	£'000
<b>Total demersal</b>	<b>5</b>	<b>5</b>
<b>Total pelagic</b>	<b>0</b>	<b>0</b>
Edible crabs	118	121
Lobsters	46	512
Nephrops	1,076	2,351
Razor Fish	36	77
Surf clams	103	114
Velvet crabs	52	85
Other shellfish	14	42
<b>Total shellfish</b>	<b>1,444</b>	<b>3,301</b>
<b>Total landings</b>	<b>1,449</b>	<b>3,306</b>

	Aberdeen	
	Tonnes	£'000
Catfish	24	38
Cod	766	1,283
Dogfish - Spur	21	22
Haddock	7,993	6,674
Hake	96	130
Halibut	30	143
Lemon sole	155	387
Ling	92	98
Megrims	34	63
Monks	327	772
Plaice	118	99
Pollack	83	98
Saithe	929	406
Skates & Rays	29	23
Whiting	799	582
Witches	30	31
Other demersal	49	84
<b>Total demersal</b>	<b>11,573</b>	<b>10,934</b>
<b>Blue whiting</b>	<b>11,664</b>	<b>583</b>
<b>Total pelagic</b>	<b>11,668</b>	<b>587</b>
Edible crabs	165	169
Nephrops	446	1,139
Scallops	1,075	1,767
Squid	189	371
Velvet crabs	30	50
Other shellfish	17	167
<b>Total shellfish</b>	<b>1,922</b>	<b>3,663</b>
<b>Total landings</b>	<b>25,164</b>	<b>15,184</b>

	Peterhead	
	Tonnes	£'000
Blue Ling	29	32
Catfish	141	222
Cod	3,332	6,219
Dogfish - Spur	99	122
Haddock	22,055	18,094
Hake	270	379
Halibut	101	442
Lemon sole	339	875
Ling	688	764
Megrims	321	668
Monks	1,791	4,498
Plaice	317	357
Pollack	329	416
Roes	37	56
Saithe	3,228	1,561
Skates & Rays	61	71
Tusk	36	30
Whiting	2,181	1,784
Witches	145	200
Other demersal	120	298
Other flatfish	37	59
<b>Total demersal</b>	<b>35,659</b>	<b>37,150</b>
Argentines	47	4
Herring	37,080	7,091
Horse Mackerel	114	14
Mackerel	41,807	30,004
Other pelagic	10	0
<b>Total pelagic</b>	<b>79,058</b>	<b>37,114</b>
Nephrops	2,091	5,792
Scallops	547	809
Squid	125	273
Other shellfish	9	16
<b>Total shellfish</b>	<b>2,773</b>	<b>6,891</b>
<b>Total landings</b>	<b>117,490</b>	<b>81,154</b>

	Fraserburgh	
	Tonnes	£'000
Blue Ling	28	28
Cod	846	1,194
Dogfish - Spur	40	44
Haddock	5,836	3,773
Hake	58	47
Halibut	79	349
Lemon sole	256	484
Ling	180	200
Megrims	252	438
Monks	1,869	4,563
Plaice	177	113
Saithe	783	322
Skates & Rays	53	31
Whiting	1,535	864
Witches	304	291
Other demersal	154	217
Other flatfish	25	54
<b>Total demersal</b>	<b>12,475</b>	<b>13,012</b>
Herring	11,250	2,420
Mackerel	12,024	10,456
<b>Total pelagic</b>	<b>23,275</b>	<b>12,876</b>
Edible Crabs	99	111
Crabs - other	58	67
Nephrops	9,287	23,218
Scallops	926	1,521
Squid	571	1,272
Other shellfish	15	28
<b>Total shellfish</b>	<b>10,955</b>	<b>26,219</b>
<b>Total landings</b>	<b>46,705</b>	<b>52,107</b>

	Buckie	
	Tonnes	£'000
Cod	57	98
Dogfish - Spur	163	221
Haddock	131	103
Ling	48	57
Monks	92	249
Saithe	58	32
Whiting	29	24
Other demersal	90	111
<b>Total demersal</b>	<b>667</b>	<b>894</b>
<b>Total pelagic</b>	<b>3</b>	<b>1</b>
Edible crabs	25	23
Nephrops	617	1,438
Scallops	511	890
Squid	735	1,574
Velvet crabs	26	38
Other shellfish	4	12
<b>Total shellfish</b>	<b>1,919</b>	<b>3,975</b>
<b>Total landings</b>	<b>2,589</b>	<b>4,870</b>

	Wick	
	Tonnes	£'000
Blue Ling	142	157
Catfish	23	33
Cod	720	1,334
Dogfish - Spur	132	159
Forkbeards	44	32
Greenland halibut	348	748
Gurnards - Red	38	3
Haddock	1,928	1,727
Hake	96	113
Halibut	22	95
Ling	390	436
Megrims	315	684
Monks	1,640	4,168
Plaice	71	68
Pollack	42	57
Redfish	209	233
Saithe	3,407	1,559
Skates & rays	152	144
Tusk	64	46
Whiting	139	125
Witches	48	53
Other demersal	98	147
<b>Total demersal</b>	<b>10,067</b>	<b>12,121</b>
<b>Total pelagic</b>	<b>12</b>	<b>5</b>
Edible crabs	2,693	3,203
Crabs - Other	52	63
Lobsters	47	560
Mussels	975	240
Nephrops	237	580
Scallops	631	893
Squid	69	178
Velvet Crabs	91	150
Wheeks	379	193
Other shellfish	15	13
<b>Total shellfish</b>	<b>5,188</b>	<b>6,071</b>
<b>Total landings</b>	<b>15,267</b>	<b>18,197</b>

	Orkney	
	Tonnes	£'000
<b>Total demersal</b>	<b>30</b>	<b>31</b>
<b>Total pelagic</b>	<b>3</b>	<b>3</b>
Edible crabs	1,705	1,744
Green crabs	227	116
Lobsters	110	1200
Periwinkles	41	46
Scallops	288	712
Velvet crabs	752	1,219
Wheeks	455	232
Other shellfish	31	79
<b>Total shellfish</b>	<b>3,608</b>	<b>5,349</b>
<b>Total landings</b>	<b>3,642</b>	<b>5,382</b>

	Shetland	
	Tonnes	£'000
Cod	1,068	1,910
Dogfish - Spur	50	59
Haddock	3,823	3,061
Hake	40	43
Lemon Sole	37	82
Ling	450	443
Megrims	296	562
Monks	1,698	3,866
Plaice	137	120
Pollack	74	95
Saithe	901	358
Skates & rays	137	129
Whiting	758	600
Witches	43	47
Other demersal	152	194
<b>Total demersal</b>	<b>9,664</b>	<b>11,569</b>
<b>Blue whiting</b>	<b>17,093</b>	<b>783</b>
Herring	22,995	4,926
Mackerel	62,104	35,456
<b>Total pelagic</b>	<b>102,191</b>	<b>41,165</b>
Edible crabs	62	69
Nephrops	223	717
Scallops	711	991
Squid	55	142
Other shellfish	8	9
<b>Total shellfish</b>	<b>1,059</b>	<b>1,928</b>
<b>Total landings</b>	<b>112,914</b>	<b>54,663</b>

	Stornoway	
	Tonnes	£'000
Dogfish - Spur	40	48
Skates & rays	42	33
Other demersal	89	88
<b>Total demersal</b>	<b>172</b>	<b>169</b>
<b>Total pelagic</b>	<b>0</b>	<b>0</b>
Edible crabs	611	647
Cockles	67	75
Lobsters	90	893
Nephrops	1,671	5,283
Scallops	755	1,174
Velvet crabs	230	421
Other shellfish	42	132
<b>Total shellfish</b>	<b>3,465</b>	<b>8,627</b>
<b>Total landings</b>	<b>3,637</b>	<b>8,796</b>

	Lochinver	
	Tonnes	£'000
Blue Ling	84	72
Cod	45	82
Forkbeard	20	18
Haddock	304	240
Hake	694	3,023
Ling	498	603
Megrims	86	200
Monks	472	1,306
Saithe	107	63
Skates & rays	32	33
Tusk	27	23
Witches	100	167
Other demersal	56	73
<b>Total demersal</b>	<b>2,525</b>	<b>5,902</b>
<b>Crabs - Other</b>	<b>31</b>	<b>79</b>
Nephrops	617	1,783
Other shellfish	58	105
<b>Total shellfish</b>	<b>707</b>	<b>1,967</b>
<b>Total landings</b>	<b>3,232</b>	<b>7,869</b>

Chart 7. Average prices of landings into Scotland by UK vessels, by species type, 1988 to 2005

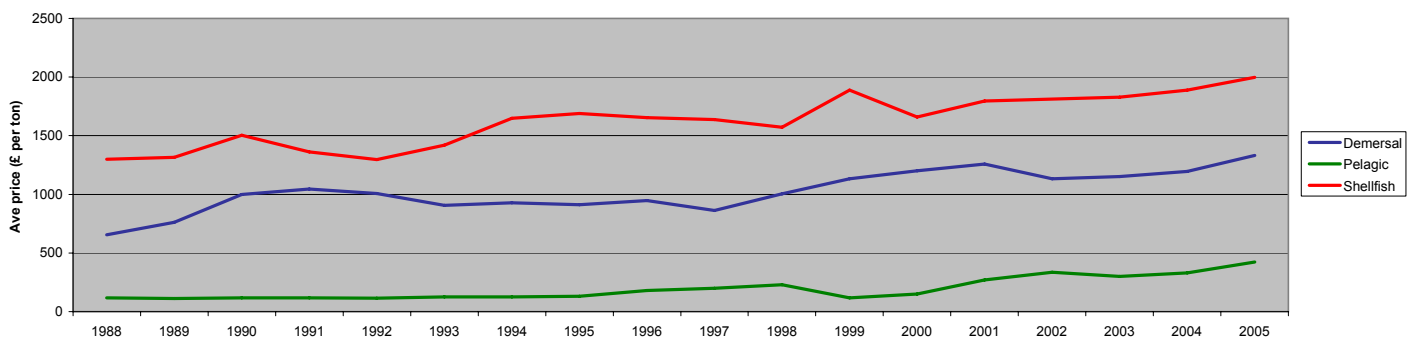


Table 23. continued

	Kinlochbervie	
	Tonnes	£'000
Blue Ling	178	213
Cod	290	525
Dogfish - Spur	40	37
Forkbeard	49	34
Greenland halibut	149	295
Haddock	666	551
Hake	98	133
Ling	403	428
Megrim	323	725
Monks	1,062	2,749
Plaice	33	25
Redfish	93	107
Saithe	637	301
Skates & rays	143	124
Tusk	54	37
Whiting	29	17
Witches	24	31
Other demersal	94	175
Total demersal	4,364	6,507
Total pelagic	8	2
Edible crabs	127	144
Nephrops	171	464
Squid	33	64
Other shellfish	37	113
Total shellfish	369	785
Total landings	4,741	7,294

	Mallaig	
	Tonnes	£'000
Dogfish - Spur	104	103
Haddock	184	125
Hake	146	156
Megrim	55	98
Monks	110	238
Skates & Rays	92	73
Whiting	79	48
Witches	76	77
Other demersal	78	70
Total demersal	924	989
Herring	59	9
Sprats	894	116
Total pelagic	953	126
Edible crabs	37	43
Nephrops	1,994	4,631
Scallops	670	933
Velvet crabs	28	46
Other shellfish	26	130
Total shellfish	2,754	5,784
Total landings	4,632	6,899

	Ayr	
	Tonnes	£'000
Dogfish - Spur	240	300
Haddock	33	28
Monks	30	89
Skates & rays	106	159
Other demersal	67	138
Total demersal	476	714
Total pelagic	1	2
Clams	42	119
Cockles	29	41
Nephrops	1,170	2,608
Queen scallops	3,716	1,704
Scallops	1,104	1,869
Other shellfish	22	97
Total shellfish	6,084	6,439
Total landings	6,561	7,155

	All ports	
	Tonnes	£'000
Blue Ling	580	626
Bluemouth	51	57
Catfish	256	393
Cod	7,323	13,008
Conger eels	31	17
Dogfish - Portugese	156	127
Dogfish - Spotted	77	29
Dogfish - Spur	1,184	1,437
Forkbeard	162	137
Greenland halibut	498	1,045
Gurnards - Red	120	69
Haddock	45,282	36,747
Hake	1,530	4,069
Halibut	268	1,210
John dory	43	74
Lemon sole	878	2,035
Ling	2,947	3,239
Megrim	1,842	3,812
Monks	9,628	23,946
Other flatfish	85	142
Plaice	900	820
Pollack	553	690
Redfish	342	382
Roes	94	170
Roundnose Grenadier	96	87
Saithe	10,551	4,876
Scabbardfish	101	186
Shark (leafscale gulper)	41	45
Skates & rays	1,079	1,136
Turbot	50	348
Tusk	261	191
Whiting	5,753	4,199
Witches	1,430	2,564
Other demersal	387	380
Total demersal	94,579	108,293
Argentines	75	14
Blue whiting	28,767	1,367
Herring	71,385	14,446
Horse mackerel	115	14
Mackerel	115,970	75,939
Sprats	894	116
Total pelagic	217,206	91,897
Clams	78	213
Cockles	105	123
Crabs other	141	209
Edible crabs	8,248	9,106
Green crabs	260	134
Lobsters	414	4,467
Mussels	975	240
Nephrops	25,199	67,872
Periwinkles	44	51
Queen scallops	4,157	2,010
Razor fish	175	439
Red crabs	104	45
Scallops	9,777	15,720
Squid	1,898	4,182
Surf clams	103	114
Velvet crabs	1,802	2,995
Whelks	983	509
Other shellfish	13	117
Total shellfish	54,476	108,545
Total landings	366,260	308,738

	Ullapool	
	Tonnes	£'000
Blue Ling	118	124
Bluemouth	46	52
Cod	142	291
Dogfish - Portugese	143	113
Dogfish - Spur	83	93
Forkbeard	38	41
Haddock	892	897
Ling	145	163
Megrim	128	302
Monks	504	1,382
Roundnose Grenadier	65	60
Saithe	475	258
Scabbardfish	77	140
Shark (leafscale gulper)	41	45
Skates & rays	85	110
Tusk	28	21
Witches	643	1,651
Other demersal	118	158
Total demersal	3,770	5,902
Mackerel	25	15
Other pelagic	7	3
Total pelagic	33	18
Edible crabs	592	642
Nephrops	572	2,801
Red crabs	102	42
Scallops	119	172
Other shellfish	32	84
Total shellfish	1,417	3,741
Total landings	5,220	9,661

	Oban	
	Tonnes	£'000
Dogfish - Spotted	22	5
Dogfish - Spur	136	193
Skates & rays	111	166
Other demersal	29	25
Total demersal	299	390
Edible crabs	1,288	1,404
Lobsters	29	319
Nephrops	601	2,353
Queen Scallops	49	70
Scallops	937	1,448
Velvet crabs	140	242
Other shellfish	3	7
Total shellfish	3,047	5,843
Total landings	3,346	6,233

	Portree	
	Tonnes	£'000
Total demersal	65	89
Clams	21	50
Edible crabs	393	437
Nephrops	1,154	4,772
Scallops	401	741
Velvet crabs	74	115
Other shellfish	31	160
Total shellfish	2,075	6,275
Total	2,140	6,364

	Campbeltown	
	Tonnes	£'000
Haddock	23	15
Other demersal	45	46
Total demersal	68	61
Total pelagic	0	0
Edible crabs	259	268
Lobsters	24	260
Nephrops	2,237	5,176
Queen scallops	372	220
Razor fish	110	281
Scallops	1,003	1,632
Velvet crabs	314	525
Whelks	123	64
Other shellfish	13	15
Total shellfish	4,454	8,439
Total	4,523	8,501

(1) When the Register of Buyers and Sellers (RBS) was introduced in September 2005, Sales Notes were not initially required for sales of shellfish and information on the value of such landings is consequently missing. The value has therefore been estimated for a number of landings, mostly shellfish, relating to voyages starting on or after 1 September 2005.

(2) liveweight landings of 20 tonnes or more.

Chart 8. Liveweight landings into Scotland by UK vessels, by species type, 1965 to 2005

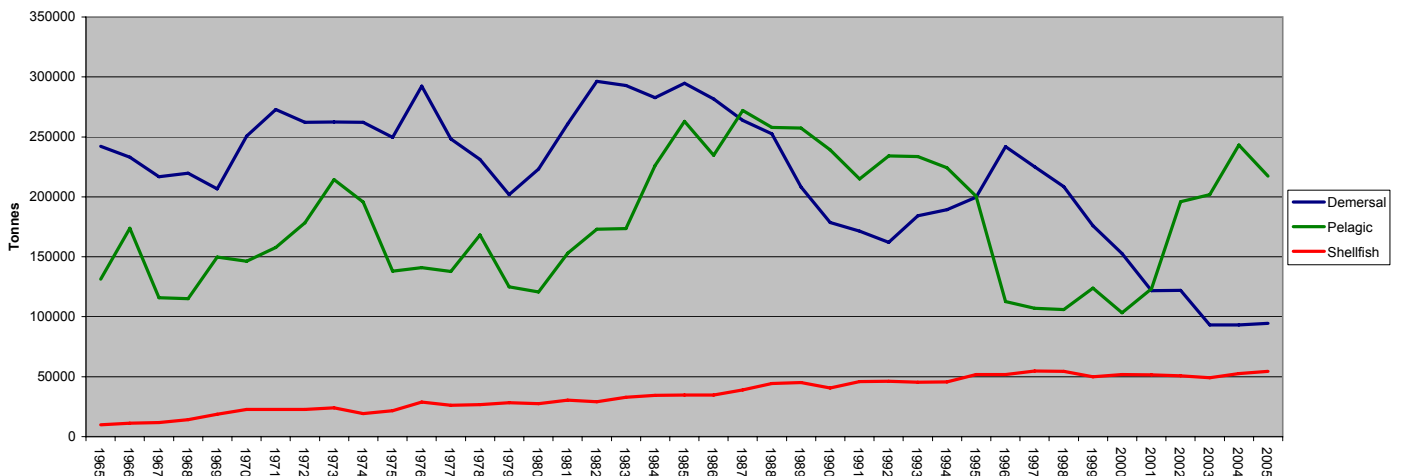


Chart 9. Average prices of landings into Scotland, by species type and month, 2005

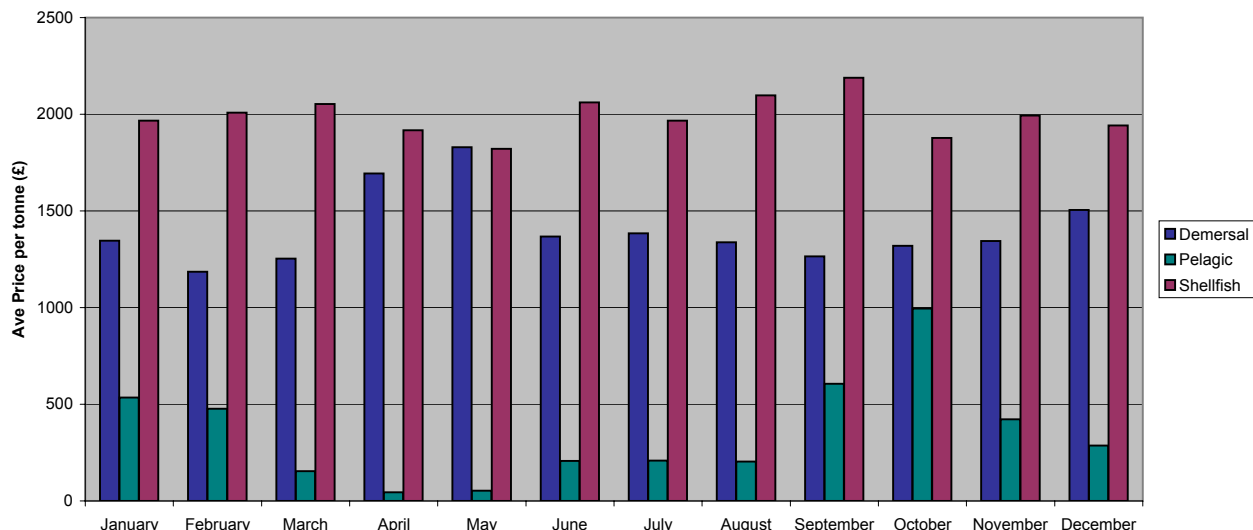


Table 24. Liveweight and value of landings into Scotland by foreign vessels, by main (1) species, 2001 to 2005

	Tonnes					Value (£'000) (1)				
	2001	2002	2003	2004	2005	2001	2002	2003	2004	2005
Blue ling	3,250	3,333	4,735	4,161	3,641	4,431	4,590	5,879	5,573	4,915
Cod	2,175	4,768	5,329	4,099	1,937	2,851	5,811	6,593	5,638	3,376
Dogfish	2,845	2,410	1,955	1,621	1,219	2,515	2,027	1,626	1,370	1,055
Haddock	1,567	5,300	4,620	2,444	1,485	2,083	5,350	3,982	2,015	1,439
Hake	1,118	914	503	1,013	2,250	5,223	4,315	2,392	4,756	9,763
Monks	642	727	929	1,079	1,227	1,274	1,737	1,996	2,451	2,999
Redfish	549	705	631	1,490	973	780	838	793	1,521	1,092
Roundnose grenadier	5,742	6,602	5,861	6,464	3,966	6,609	7,901	6,813	7,547	4,710
Saithe	3,845	5,313	6,182	7,796	7,823	3,394	3,183	3,562	3,910	4,525
Scabbardfish	2,532	3,911	2,870	2,387	2,403	5,826	8,667	5,903	5,128	4,682
Other demersal	4,654	5,427	4,178	3,734	3,062	5,499	5,430	5,520	4,902	3,736
Total demersal	28,918	39,409	37,793	36,289	29,984	40,485	49,848	45,060	44,811	42,292
Herring	-	228	377	5,351	15,338	-	45	45	844	4,163
Mackerel	9,877	11,376	9,923	13,201	13,742	2,991	4,813	4,277	6,985	13,568
Other pelagic	20,647	10,525	24,786	20,076	15,120	1,379	731	2,013	1,229	899
Total pelagic	30,524	22,129	35,087	38,627	44,200	4,370	5,590	6,335	9,059	18,630
Total shellfish	94	36	171	326	526	179	102	302	482	648
Total	59,536	61,574	73,051	75,241	74,711	45,034	55,540	51,697	54,352	61,569

(1) landings of £1.0 million or more in 2005

Table 25. Liveweight and value of landings into Scotland by foreign vessels, by country of origin, 2001 to 2005

	Tonnes					Value (£'000) (1)				
	2001	2002	2003	2004	2005	2001	2002	2003	2004	2005
Denmark	15	42	1,853	4,571	8,675	40	88	177	555	1,486
Eire	10,642	11,425	10,023	18,089	16,337	3,213	4,867	4,299	7,531	9,833
Faroe	11,554	18,397	25,662	19,365	18,939	7,692	17,150	18,912	15,240	17,450
France	19,001	17,789	16,004	17,243	14,888	25,482	24,723	21,963	24,364	21,124
Germany	261	88	256	1,174	1,486	421	190	383	625	656
Iceland	-	233	4,137	1,513	1,454	-	340	447	178	71
Norway	14,573	10,242	11,736	11,370	9,404	873	810	948	782	1,740
Poland	-	-	-	34	359	-	-	-	12	160
Russia	-	-	617	43	-	-	-	43	31	-
Spain	3,491	3,106	2,277	1,579	2,674	7,312	7,174	4,462	5,000	8,866
Sweden	-	-	450	262	495	-	-	34	34	183
Other	-	253	36	-	-	-	198	29	-	-
Total	59,536	61,574	73,051	75,241	74,711	45,034	55,540	51,697	54,352	61,569

Table 26. Liveweight and value of landings into Scotland by foreign vessels, by landing district, 2001 to 2005

	Tonnes					Value (£'000) (1)				
	2001	2002	2003	2004	2005	2001	2002	2003	2004	2005
North east ports (2)	10,261	11,028	10,671	14,507	21,797	2,770	5,500	5,043	6,392	11,929
Other east coast	-	-	-	-	-	-	-	-	-	-
North mainland ports (3)	5,412	13,745	15,689	14,635	9,942	6,346	13,071	13,707	11,678	8,662
Orkney/Shetland	20,344	13,907	26,101	24,649	22,825	1,717	1,687	2,785	3,159	7,099
North west/WI ports (4)	23,453	22,894	20,589	21,372	20,146	34,130	35,283	30,161	32,974	33,879
South west ports (5)	66	-	-	77	-	71	-	-	149	-
Total	59,536	61,574	73,051	75,241	74,711	45,034	55,540	51,697	54,352	61,569

(1) When the Register of Buyers and Sellers (RBS) was introduced in September 2005, Sales Notes were not initially required for sales of shellfish and information on the value of such landings is consequently missing. The value has therefore been estimated for a number of landings, mostly shellfish, relating to voyages starting on or after 1 September 2005.

(2) Aberdeen to Buckie port districts; (3) Wick to Kinlochberrie; (4) Lochinver to Oban; (5) Campbeltown to Ayr

Table 27. Liveweight and value of landings by Scottish based vessels, by main (1) species, 2001 to 2005

	Landings into UK & abroad (tonnes)														
	Into UK					Abroad					Total				
	2001	2002	2003	2004	2005	2001	2002	2003	2004	2005	2001	2002	2003	2004	2005
Cod	17,253	16,822	8,727	6,986	7,133	317	283	261	338	188	17,570	17,105	8,988	7,325	7,321
Dover sole	24	11	15	8	20	309	239	233	355	353	333	250	248	363	373
Haddock	37,315	47,178	37,710	42,370	44,581	155	158	89	159	75	37,471	47,336	37,799	42,529	44,655
Hake	859	688	681	1,021	1,596	180	153	213	275	544	1,038	841	894	1,296	2,141
Lemon sole	1,835	901	817	670	877	166	142	149	160	196	2,001	1,044	966	830	1,073
Ling	5,074	5,209	3,420	3,359	2,775	498	321	59	141	44	5,572	5,530	3,479	3,500	2,819
Megrim	2,796	2,476	2,127	1,939	1,839	30	37	78	92	104	2,826	2,513	2,205	2,031	1,942
Monks	11,272	9,727	7,080	7,393	9,316	720	636	267	338	1,021	11,993	10,363	7,347	7,731	10,336
Plaice	2,149	1,485	1,298	885	933	6,552	6,999	5,744	6,999	5,502	8,701	8,484	7,042	7,885	6,435
Saithe	7,043	7,231	6,378	6,958	7,927	37	305	95	171	247	7,080	7,536	6,473	7,129	8,174
Whiting	12,481	8,916	6,536	5,564	6,018	58	51	45	63	49	12,539	8,967	6,581	5,627	6,067
Other demersal	19,233	16,735	14,444	10,963	5,309	3,861	5,933	3,186	4,015	3,039	23,094	22,668	17,631	14,978	8,349
Total demersal	117,335	117,378	89,234	88,116	88,325	12,884	15,258	10,420	13,107	11,361	130,219	132,636	99,654	101,224	99,686
Blue whiting	20,023	8,047	9,728	24,971	28,783	30,124	18,355	19,015	33,535	75,788	50,147	26,402	28,743	58,505	104,571
Herring	39,907	39,588	50,902	53,133	70,559	20,271	13,067	10,654	13,154	18,825	60,177	52,656	61,556	66,287	89,384
Mackerel	59,874	92,587	99,098	111,150	116,235	109,313	75,754	47,680	31,235	15,941	169,188	168,341	146,778	142,385	132,176
Other pelagic	11,437	10,035	3,565	2,632	1,279	13,517	3,607	213	1,484	653	24,954	13,642	3,778	4,116	1,932
Total pelagic	131,241	150,257	163,293	191,886	216,856	173,224	110,784	77,562	79,408	111,207	304,466	261,041	240,854	271,294	328,063
Edible crabs	6,941	6,014	5,724	5,919	6,418	2	30	20	58	61	6,944	6,044	5,744	5,977	6,479
Lobsters	290	323	287	413	406	1	0	1	1	2	291	323	288	414	408
Nephrops	20,318	20,768	20,406	22,719	24,928	35	32	36	35	167	20,353	20,800	20,441	22,754	25,094
Scallops	12,642	11,682	12,534	14,116	12,454	-	-	-	-	3	12,642	11,682	12,535	14,117	12,458
Squid	720	1,980	2,223	2,136	1,916	111	180	100	111	140	831	1,370	2,323	2,247	2,056
Velvet crabs	2,230	1,971	1,519	2,299	1,802	-	-	-	-	-	2,230	1,971	1,519	2,299	1,802
Other shellfish	10,171	9,783	7,832	6,454	6,750	92	170	215	555	267	10,262	9,953	8,047	7,008	7,017
Total shellfish	53,313	51,731	50,525	54,056	54,674	240	411	373	760	640	53,553	52,143	50,898	54,816	55,313
Total landings	301,889	319,366	303,052	334,058	359,855	186,348	126,453	88,354	93,275	123,208	488,237	445,819	391,406	427,333	483,062

	Landings into UK & abroad (value £'000) (2)														
	Into UK					Abroad					Total				
	2001	2002	2003	2004	2005	2001	2002	2003	2004	2005	2001	2002	2003	2004	2005
Cod	23,289	23,525	13,649	12,036	12,671	466	429	384	526	301	23,755	23,954	14,032	12,562	12,971
Dover sole	121	48	69	41	131	2,142	1,573	1,628	2,417	2,637	2,263	1,622	1,696	2,458	2,768
Haddock	31,660	30,832	25,254	30,236	36,266	98	72	69	107	66	31,758	30,905	25,323	30,343	36,332
Hake	1,445	1,344	1,237	1,947	4,203	344	291	408	511	1,455	1,789	1,636	1,646	2,458	5,657
Lemon sole	4,161	2,165	1,803	2,049	2,030	451	395	335	351	461	4,612	2,560	2,138	2,401	2,492
Ling	5,587	5,668	3,579	3,504	3,072	1,287	828	153	176	90	6,874	6,496	3,732	3,680	3,163
Megrim	4,023	4,045	4,291	3,960	3,847	124	147	336	503	393	4,147	4,193	4,627	4,462	4,240
Monks	25,635	21,050	14,424	15,416	23,003	3,584	2,927	1,093	1,173	4,191	29,219	23,977	15,517	16,589	27,195
Plaice	1,561	1,018	1,101	690	853	7,245	8,067	8,001	8,675	7,433	8,806	9,085	9,102	9,365	8,286
Saithe	3,000	2,960	2,592	2,853	3,749	18	194	73	81	138	3,018	3,154	2,665	2,935	3,887
Whiting	8,350	5,254	4,219	3,983	4,248	27	24	22	41	29	8,377	5,278	4,241	4,023	4,277
Other demersal	18,406	17,032	18,979	12,963	7,476	8,054	6,745	5,493	7,185	4,161	26,459	23,777	24,472	20,148	11,638
Total demersal	127,238	114,942	91,196	89,679	101,549	23,839	21,692	17,995	21,746	21,355	151,077	136,634	109,191	111,425	122,904
Blue whiting	936	532	670	1,344	1,368	1,732	1,504	1,545	2,194	4,620	2,668	2,037	2,215	3,538	5,988
Herring	9,554	6,402	6,280	6,478	14,276	6,745	3,927	2,142	2,482	4,109	16,299	10,329	8,422	8,960	18,385
Mackerel	22,448	41,080	41,742	55,086	76,031	49,099	41,515	24,883	16,851	13,128	71,548	82,596	66,624	71,937	89,158
Other pelagic	2,404	1,871	465	309	187	3,616	959	12	517	611	6,020	2,830	477	826	798
Total pelagic	35,342	49,886	49,157	63,218	91,861	61,193	47,906	28,581	22,044	22,468	96,534	97,792	77,738	85,262	114,329
Edible crabs	7,043	6,359	6,182	6,152	6,885	2	9	13	30	50	7,046	6,368	6,195	6,182	6,934
Lobsters	3,376	3,359	3,180	4,228	4,360	2	1	3	2	10	3,378	3,360	3,183	4,231	4,370
Nephrops	53,633	55,864	52,119	57,209	67,463	125	114	125	118	751	53,758	55,978	52,244	57,327	68,214
Scallops	20,147	17,787	19,425	22,116	20,167	-	0	1	1	5	20,147	17,787	19,426	22,117	20,172
Squid	1,333	2,005	4,838	5,285	4,202	661	1,032	553	557	733	1,994	3,037	5,391	5,842	4,935
Velvet crabs	3,656	3,110	2,381	3,118	2,994	-	-	-	-	-	3,656	3,110	2,381	3,118	2,994
Other shellfish	4,923	4,057	3,489	3,441	3,919	91	149	232	1,398	275	5,015	4,206	3,721	4,840	4,194
Total shellfish	94,112	92,541	91,615	101,549	109,989	881	1,305	927	2,106	1,823	94,993	93,846	92,542	103,655	111,812
Total landings	256,692	257,369	231,968	254,446	303,399	85,912	70,902	47,503	45,895	45,646	342,604	328,272	279,471	300,342	349,045

	Landings into UK & abroad (value £'000) (2005 prices)														
	Into UK					Abroad					Total				
	2001	2002	2003	2004	2005	2001	2002	2003	2004	2005	2001	2002	2003	2004	2005
Cod	25,935	25,411	14,318	12,291	12,671	519	463	403	537	301	26,454	25,875	14,720	12,828	12,971
Dover sole	135	52	72	42	131	2,386	1,700	1,707	2,468	2,637	2,520	1,752	1,779	2,510	2,768
Haddock	35,257	33,305	26,491	30,877	36,266	109	78	73	109	66	35,366	33,383	26,564	30,986	36,332
Hake	1,609	1,452	1,298	1,988	4,203	383	314	428	522	1,455	1,993	1,767	1,726	2,510	5,657
Lemon sole	4,634	2,339	1,891	2,093	2,030	502	427	352	359	461	5,136	2,765	2,243	2,452	2,492
Ling	6,222	6,122	3,754	3,578	3,072	1,433	895	161	180	90	7,655	7,017	3,915	3,758	3,163
Megrim	4,480	4,370	4,501	4,043	3,847	138	159	352	513	393	4,618	4,529	4,853	4,557	4,240
Monks	28,547	22,738	15,131	15,743	23,003	3,991	3,161	1,147	1,198	4,191	32,539	25,900	16,277	16,941	27,195
Plaice	1,738	1,100	1,155	705	853	8,068	8,714	8,393	8,859	7,433	9,806	9,813	9,548	9,564	8,286
Saithe	3,341	3,197	2,719	2,914	3,749	20	209	76	83	138	3,361	3,406	2,795	2,997	3,887
Whiting	9,298	5,675	4,426	4,067	4,248	30	26	23	41	29	9,328	5,701	4,449	4,109	4,277
Other demersal	20,497	18,398	19,909	13,238	7,476	8,969	7,286	5,762	7,338	4,161	29,465	25,683	25,672	20,575	11,638
Total demersal	141,694	124,160	95,666	91,579	101,549	26,547	23,431	18,877	22,207	21,355	168,241	147,591	114,542	113,786	122,904
Blue whiting	1,042	575	702	1,373	1,368	1,929	1,625	1,621	2,241	4,620	2,971	2,200	2,324	3,613	5,988
Herring	10,639	6,915	6,588	6,616	14,276	7,512	4,242	2,246	2,534	4,109	18,151	11,158	8,835	9,150	18,385
Mackerel	24,999	44,375	43,788	56,254	76,031	54,677	44,845	26,102	17,208	13,128	79,676	89,219	69,890	73,461	89,158
Other pelagic	2,677	2,021	488	316	187	4,027	1,036	12	528	611	6,704	3,057	501	844	798
Total pelagic	39,357	53,886	51,566	64,558	91,861	68,145	51,748	29,982	22,511	22,468	107,502	105,634	81,548	87,068	114,329
Edible crabs	7,844</														

Chart 10. Value of landings (2005 prices) per Scottish based over 10 metres vessel, by vessel type 1989 to 2005

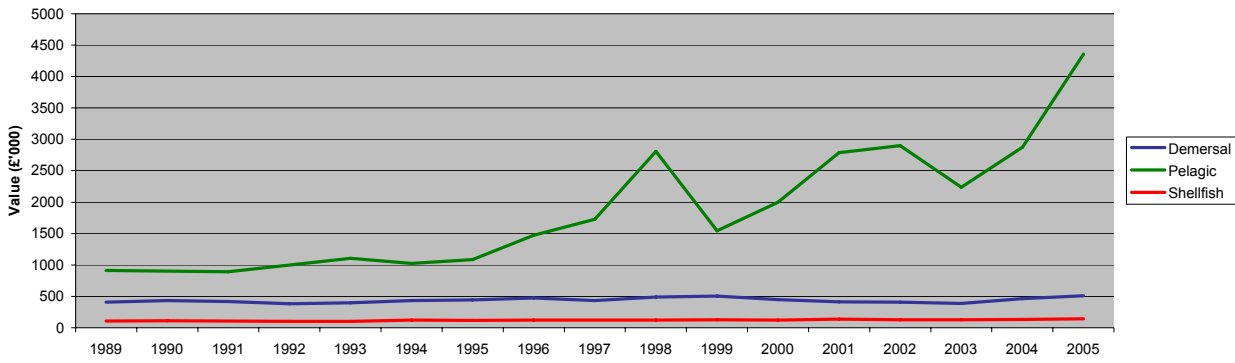


Table 28. Liveweight and value of landings abroad by Scottish based vessels, by country of landing, 2001 to 2005

	Tonnes					Value (£ thousand) (2)				
	2001	2002	2003	2004	2005	2001	2002	2003	2004	2005
EU: Denmark	38,863	35,057	16,973	33,129	60,730	8,098	9,260	3,938	3,408	8,517
Eire	5,319	1,923	6,016	2,052	359	1,044	718	1,205	1,127	1,015
France	2,676	1,484	361	178	309	508	348	73	51	120
Germany	0	178	167	725	7,995	0	187	208	245	1,913
Holland	9,776	9,367	7,447	8,972	7,645	12,629	12,493	12,029	13,936	13,080
Spain	3,735	3,105	2,683	3,464	3,317	8,987	7,684	6,122	8,200	8,096
Non- Faroes	19,102	6,009	3,374	5,297	9,103	5,345	1,153	299	351	574
Iceland	54	0	2,330	2,510	16,311	52	0	185	534	1,100
Norway	106,241	68,926	49,002	36,576	16,670	46,214	37,140	23,444	17,289	10,255
Other	582	404	-	373	769	3,036	1,919	-	754	976
<b>Total</b>	<b>186,348</b>	<b>126,453</b>	<b>88,354</b>	<b>93,275</b>	<b>123,208</b>	<b>85,912</b>	<b>70,902</b>	<b>47,503</b>	<b>45,895</b>	<b>45,646</b>

Table 29. Liveweight and value of landings from specified ICES areas by Scottish based vessels, by main (1) species, 2005

ICES area	Liveweight (tonnes)										Value (£'000) (2)													
	North sea		Area Faroes		West Scotland		Irish sea		Rest of area VII		Other		North sea		Area Faroes		West Scotland		Irish sea		Rest of area VII		Other	
	IV a	IV b	II a	V b	VI a	VI b	VII a	VII b	area VII	area VII	Other	Other	IV a	IV b	II a	V b	VI a	VI b	VII a	VII b	area VII	area VII	Other	Other
Cod	6,277	314	1	256	325	43	3	2	99	7,321	11,188	432	2	508	598	80	6	5	153	12,971				
Dover sole	0	222	-	-	1	-	3	3	143	373	1	1,720	-	-	7	-	13	19	1,008	2,768				
Haddock	34,995	6,423	0	112	2,706	410	6	2	0	44,655	27,873	5,478	0	132	2,452	387	6	4	0	36,332				
Hake	433	44	-	1	1,066	1	2	512	83	2,141	545	63	-	1	3,519	1	5	1,343	182	5,657				
Halibut	200	24	0	15	20	4	-	-	1	263	923	121	0	66	72	21	-	-	4	1,207				
Lemon sole	587	450	-	18	12	1	0	1	3	1,073	1,382	1,015	-	55	23	3	1	4	9	2,492				
Ling	1,404	11	0	160	1,093	85	1	65	0	2,819	1,528	10	0	196	1,236	95	1	96	0	3,163				
Megrim	1,198	3	0	18	368	209	0	146	-	1,942	2,362	5	1	39	867	442	0	524	-	4,240				
Monks	7,660	131	0	255	974	514	5	760	38	10,336	18,922	276	0	725	2,569	1,812	9	2,751	131	27,195				
Plaice	600	5,124	-	6	56	-	2	1	646	6,435	533	7,082	-	11	47	-	2	1	610	8,286				
Saithe	5,441	262	6	901	1,295	187	0	8	74	8,174	2,487	115	2	499	627	95	0	5	54	3,887				
Turbot	29	167	0	0	9	0	0	8	14	229	191	1,115	0	1	74	3	1	83	130	1,597				
Whiting	4,797	1,082	0	15	157	1	0	0	14	6,067	3,578	569	0	16	105	1	0	0	8	4,277				
Other demersal	2,181	1,142	3	291	1,879	220	11	1,118	1,011	7,857	2,422	1,062	2	389	2,016	266	14	1,505	1,158	8,834				
<b>Total demersal</b>	<b>65,803</b>	<b>15,402</b>	<b>11</b>	<b>2,048</b>	<b>9,960</b>	<b>1,674</b>	<b>35</b>	<b>2,626</b>	<b>2,127</b>	<b>99,686</b>	<b>73,934</b>	<b>19,065</b>	<b>8</b>	<b>2,637</b>	<b>14,214</b>	<b>3,205</b>	<b>56</b>	<b>6,339</b>	<b>3,447</b>	<b>122,904</b>				
Blue whiting	3	-	-	2,805	50,273	7,264	-	44,226	-	104,571	0	-	-	126	2,863	480	-	2,519	-	5,988				
Herring	73,083	1,427	-	-	14,874	-	-	-	-	89,384	15,164	253	-	-	2,968	-	-	-	-	18,385				
Mackerel	32,577	6	-	-	92,462	0	174	6,958	0	132,176	31,086	6	-	-	54,497	0	108	3,462	0	89,158				
Other pelagic	22	0	-	-	1,050	-	51	220	589	1,932	5	0	-	-	136	-	11	39	607	798				
<b>Total pelagic</b>	<b>105,685</b>	<b>1,434</b>	<b>-</b>	<b>2,805</b>	<b>158,659</b>	<b>7,264</b>	<b>224</b>	<b>51,403</b>	<b>589</b>	<b>328,063</b>	<b>46,255</b>	<b>259</b>	<b>-</b>	<b>126</b>	<b>60,464</b>	<b>480</b>	<b>119</b>	<b>6,019</b>	<b>607</b>	<b>114,329</b>				
Edible crabs	2,285	379	-	-	3,800	-	1	14	-	6,479	2,407	364	-	-	4,132	-	1	30	-	6,934				
Lobsters	146	77	-	-	177	-	7	-	0	408	1,610	852	-	-	1,831	-	75	-	2	4,370				
Nephrops	11,978	3,375	-	-	9,493	-	41	208	0	25,094	30,534	8,132	-	-	28,492	-	92	964	0	68,214				
Queen scallops	15	0	-	-	1,142	-	2,738	-	72	3,968	13	0	-	-	591	-	1,208	-	37	1,849				
Scallops	2,726	1,425	-	-	4,271	-	1,181	2,831	23	12,458	4,452	2,351	-	-	6,740	-	1,939	4,646	43	20,172				
Squid	1,492	305	-	0	103	-	1	92	63	2,056	3,310	649	-	0	243	-	3	365	367	4,935				
Velvet crabs	875	100	-	-	826	-	0	-	-	1,802	1,419	159	-	-	1,416	-	0	-	-	2,994				
Other shellfish	2,081	254	-	-	481	77	72	17	66	3,049	913	262	-	-	774	209	126	26	35	2,345				
<b>Total shellfish</b>	<b>21,600</b>	<b>5,916</b>	<b>-</b>	<b>0</b>	<b>20,293</b>	<b>77</b>	<b>4,041</b>	<b>3,162</b>	<b>225</b>	<b>55,313</b>	<b>44,657</b>	<b>12,769</b>	<b>-</b>	<b>0</b>	<b>44,218</b>	<b>209</b>	<b>3,445</b>	<b>6,031</b>	<b>484</b>	<b>111,812</b>				
<b>Total landings</b>	<b>193,088</b>	<b>22,751</b>	<b>11</b>	<b>4,853</b>	<b>188,912</b>	<b>9,014</b>	<b>4,301</b>	<b>57,191</b>	<b>2,940</b>	<b>483,062</b>	<b>164,846</b>	<b>32,092</b>	<b>8</b>	<b>2,763</b>	<b>118,896</b>	<b>3,895</b>	<b>3,619</b>	<b>18,389</b>	<b>4,538</b>	<b>349,045</b>				

(1) Total value over £1.0m

(2) When the Register of Buyers and Sellers (RBS) was introduced in September 2005, Sales Notes were not initially required for sales of shellfish and information on the value of such landings is consequently missing. The value has therefore been estimated for a number of landings, mostly shellfish, relating to voyages starting on or after 1 September 2005.

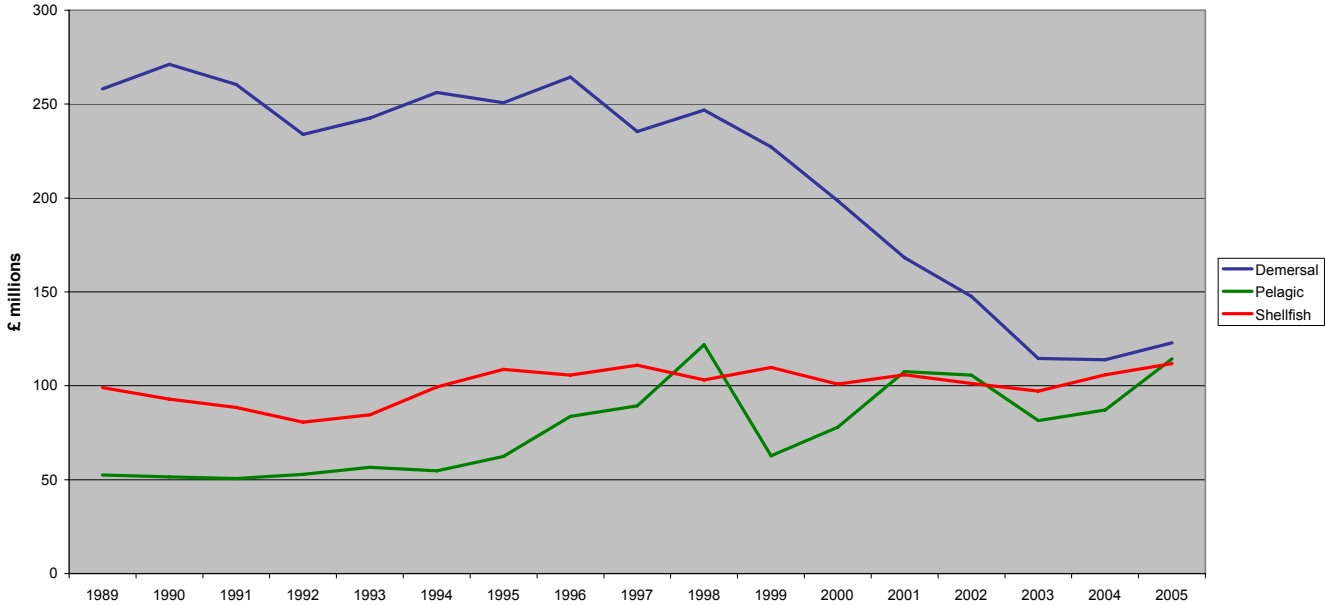


Table 30. Liveweight and value of landings by Scottish based vessels, by main (1) species and overall vessel length group (metres), 2005

	Liveweight (tonnes)										Total	Value (£'000) (2)										Total
	Overall vessel length group											Overall vessel length group										
	<8	8-10	>10-12	>12-15	>15-18	>18-24	>24-30	>30-40	>40-50	over 50		<8	8-10	>10-12	>12-15	>15-18	>18-24	>24-30	>30-40	>40-50	over 50	
Cod	0	10	6	32	151	2,054	4,390	417	261	-	7,321	1	10	5	37	215	3,281	8,210	768	444	-	12,971
Dover sole	0	0	0	1	1	4	1	65	301	-	373	0	0	0	4	5	17	9	507	2,225	-	2,768
Haddock	0	14	3	166	1,002	16,365	23,884	3,179	42	-	44,655	0	8	2	95	685	12,550	19,955	2,990	47	-	36,332
Hake	-	0	1	10	31	273	981	835	9	-	2,141	-	0	0	9	25	311	2,833	2,468	11	-	5,657
Halibut	-	1	0	3	13	114	115	13	4	-	263	-	3	1	13	65	546	490	69	20	-	1,207
Lemon sole	0	6	1	14	46	479	304	112	112	-	1,073	0	14	1	20	79	1,003	829	274	271	-	2,492
Ling	-	1	2	2	19	357	1,916	457	65	-	2,819	-	1	1	1	18	357	2,126	576	82	-	3,163
Megrim	-	2	0	4	72	909	631	283	43	-	1,942	-	2	0	4	137	1,866	1,261	860	109	-	4,240
Monks	0	4	3	55	381	3,574	3,833	2,190	297	-	10,336	0	7	5	108	900	8,493	9,713	7,164	804	-	27,195
Plaice	0	16	2	15	62	389	302	2,058	3,591	-	6,435	0	11	2	9	44	296	289	2,754	4,881	-	8,286
Saithe	4	5	1	10	69	1,212	4,920	1,447	506	-	8,174	3	4	0	4	28	467	2,340	740	300	-	3,887
Turbot	-	1	0	1	4	19	14	70	120	-	229	-	3	1	5	21	112	96	523	837	-	1,597
Whiting	0	31	2	190	375	2,950	2,329	141	48	-	6,067	0	12	1	46	203	1,902	1,947	119	46	-	4,277
Other demersal	5	30	46	142	268	1,402	2,311	2,451	1,167	34	7,857	12	29	38	334	256	1,420	2,815	2,389	1,540	1	8,834
<b>Total demersal</b>	<b>10</b>	<b>119.9</b>	<b>67</b>	<b>643</b>	<b>2,495</b>	<b>30,099</b>	<b>45,933</b>	<b>13,717</b>	<b>6,567</b>	<b>34</b>	<b>99,686</b>	<b>16</b>	<b>107</b>	<b>58</b>	<b>690</b>	<b>2,681</b>	<b>32,621</b>	<b>52,915</b>	<b>22,199</b>	<b>11,616</b>	<b>1</b>	<b>122,904</b>
Blue whiting	-	-	-	-	-	-	-	26	104,544	-	104,571	-	-	-	-	-	-	-	1	5,987	-	5,988
Herring	-	-	-	0	0	0	0	-	4,193	85,191	89,384	-	-	-	0	-	0	0	-	874	17,511	18,385
Mackerel	173	193	1	0	0	13	6	1	6,434	125,355	132,176	105	113	0	0	0	7	3	1	5,498	83,431	89,158
Other pelagic	-	-	-	9	585	309	15	25	885	103	1,932	-	-	-	3	75	41	4	20	643	12	798
<b>Total pelagic</b>	<b>173</b>	<b>193</b>	<b>1</b>	<b>9</b>	<b>586</b>	<b>323</b>	<b>21</b>	<b>26</b>	<b>11,539</b>	<b>315,193</b>	<b>328,063</b>	<b>105</b>	<b>113</b>	<b>0</b>	<b>3</b>	<b>76</b>	<b>48</b>	<b>7</b>	<b>20</b>	<b>7,017</b>	<b>106,940</b>	<b>114,329</b>
Edible crabs	329	1,707	1,397	662	1,313	1,010	13	4	45	-	6,479	340	1,774	1,438	716	1,463	1,153	28	5	18	-	6,934
Lobsters	109	161	80	29	25	2	-	1	1	-	408	1,152	1,729	859	316	283	21	-	3	7	-	4,370
Nephrops	252	2,463	2,022	3,092	5,659	10,490	1,010	104	3	-	25,095	1,390	9,658	7,383	7,100	12,434	27,034	2,807	399	8	-	68,214
Queen scallops	5	4	7	51	307	2,577	1,016	0	0	-	3,968	5	4	3	39	215	1,173	409	0	0	-	1,849
Scallops	243	421	588	690	3,042	3,339	1,245	2,888	1	-	12,458	476	691	922	1,094	4,772	5,365	1,954	4,898	1	-	20,172
Squid	0	374	23	301	335	609	269	129	16	-	2,056	0	806	51	671	755	1,300	805	534	13	-	4,935
Velvet crabs	705	736	284	65	13	-	-	-	-	-	1,802	1,179	1,210	475	109	21	-	-	-	-	-	2,994
Other shellfish	391	778	363	1,169	3	9	37	208	92	-	3,049	459	696	336	370	11	16	106	294	58	-	2,345
<b>Total shellfish</b>	<b>2,036</b>	<b>6,643</b>	<b>4,763</b>	<b>6,059</b>	<b>10,697</b>	<b>18,036</b>	<b>3,590</b>	<b>3,333</b>	<b>158</b>	<b>-</b>	<b>55,313</b>	<b>5,001</b>	<b>16,567</b>	<b>11,467</b>	<b>10,413</b>	<b>19,955</b>	<b>36,062</b>	<b>6,109</b>	<b>6,133</b>	<b>104</b>	<b>-</b>	<b>111,812</b>
<b>Total landings</b>	<b>2,219</b>	<b>6,956</b>	<b>4,831</b>	<b>6,711</b>	<b>13,778</b>	<b>48,458</b>	<b>49,544</b>	<b>17,076</b>	<b>18,263</b>	<b>315,227</b>	<b>483,062</b>	<b>5,122</b>	<b>16,788</b>	<b>11,525</b>	<b>11,106</b>	<b>22,711</b>	<b>68,731</b>	<b>59,031</b>	<b>28,353</b>	<b>18,736</b>	<b>106,941</b>	<b>349,045</b>

(1) Total value over £1.0m

Chart 11. Value (2) of landings at 2005 prices by Scottish based vessels by species type, 1989 to 2005



(2) When the Register of Buyers and Sellers (RBS) was introduced in September 2005, Sales Notes were not initially required for sales of shellfish and information on the value of such landings is consequently missing. The value has therefore been estimated for a number of landings, mostly shellfish, relating to voyages starting on or after 1 September 2005.

Table 31. Liveweight and value of landings by Scottish based vessels, by main (1) species and gear 2005

	Liveweight (tonnes)									Value (£'000) (2)								
	Demersal trawl	Demersal seine	Demersal twin trawl	Lines	Gill nets	Beam trawl	Other demersal	Demersal total	Demersal trawl	Demersal seine	Demersal twin trawl	Lines	Gill nets	Beam trawl	Other demersal	Demersal total		
Blue ling	410	-	57	0	-	-	-	468	433	-	67	1	-	-	-	501		
Cod	5,577	857	654	3	7	124	3	7,225	9,959	1,500	1,171	5	15	193	4	12,846		
Dogfish	380	46	82	2	1,038	2	0	1,549	428	40	89	2	348	2	0	909		
Dover sole	2	0	0	-	-	363	-	366	15	0	1	-	-	2,717	-	2,733		
Haddock	30,909	11,493	1,857	3	0	23	6	44,291	25,689	8,883	1,469	2	0	16	5	36,064		
Hake	1,048	178	57	737	105	8	-	2,133	1,884	238	72	3,203	243	10	-	5,650		
Halibut	206	23	21	-	1	1	0	253	932	102	105	-	10	4	0	1,153		
Lemon sole	668	147	47	-	-	174	1	1,037	1,590	341	93	-	-	408	2	2,435		
Ling	1,957	35	330	435	24	21	0	2,802	2,131	31	388	533	36	25	0	3,145		
Megrim	1,497	92	289	-	2	38	0	1,919	3,338	200	558	-	6	97	0	4,199		
Monks	7,103	208	1,404	0	1,238	191	6	10,151	17,792	459	3,543	0	4,483	520	18	26,816		
Plaice	883	240	47	-	-	5,234	1	6,405	930	228	35	-	-	7,074	1	8,266		
Pollack	336	22	32	6	4	0	1	402	423	28	49	8	7	0	1	517		
Redfish	391	0	9	2	7	-	-	409	496	0	10	3	33	-	-	543		
Saithe	7,017	292	790	6	5	1	1	8,112	3,345	129	378	4	4	0	1	3,860		
Sharks	5	0	0	163	87	-	-	254	9	0	0	351	221	-	-	581		
Skates & rays	569	52	99	0	101	75	1	896	496	47	73	1	128	93	0	838		
Turbot	37	6	3	0	12	166	0	224	242	33	20	0	121	1,159	1	1,575		
Whiting	3,914	1,321	410	-	-	56	5	5,706	2,885	972	262	-	-	31	3	4,154		
Witches	587	38	96	-	0	1	1	723	772	48	95	-	1	3	1	919		
Other demersal	1,685	73	163	51	136	863	0	2,970	2,118	93	155	62	353	856	0	3,637		
Total demersal	65,183	15,123	6,449	1,408	2,766	7,342	26	98,297	75,907	13,371	8,634	4,174	6,008	13,208	39	121,342		
Other species	60,608	107	2,200	943	249	189	17	64,314	54,983	282	5,641	815	714	155	38	62,627		

	Liveweight (tonnes)			Value (£'000) (2)		
	Pelagic purse seine	Pelagic trawl	Pelagic total	Pelagic purse seine	Pelagic trawl	Pelagic total
Blue whiting	-	76,931	76,931	-	4,572	4,572
Herring	-	83,741	83,741	-	17,278	17,278
Mackerel	-	124,344	124,344	-	84,095	84,095
Other pelagic	-	1,259	1,259	-	167	167
Total pelagic	-	286,275	286,275	-	106,112	106,112
Other species	40	177	217	55	371	426

	Liveweight (tonnes)						Value (£'000) (2)					
	Creel fishing	Nephrop trawl	Dredging	Hand shellfishing	Other methods	Shellfish total	Creel fishing	Nephrop trawl	Dredging	Hand shellfishing	Other methods	Shellfish total
Edible crabs	6,377	2	22	10	-	6,412	6,839	2	26	12	-	6,879
Lobsters	404	0	0	0	-	405	4,346	1	1	0	-	4,349
Nephrops	1,770	3,663	5	0	4	5,442	10,791	8,665	17	1	11	19,485
Scallops	15	3	12,035	394	-	12,447	26	10	19,285	833	-	20,153
Queen scallops	-	-	-	3,480	8	3,487	-	-	-	1,506	8	1,513
Velvet crabs	1,798	0	0	0	-	1,799	2,990	0	0	0	-	2,991
Other shellfish	1,229	29	1,100	321	85	2,764	775	65	454	617	98	2,009
Total shellfish	11,594	3,697	13,162	4,205	97	32,756	25,767	8,743	19,783	2,970	116	57,379
Other species	39	1,111	49	0	5	1,204	36	1,010	109	0	4	1,159

(1) Total value over £0.5m

(2) When the Register of Buyers and Sellers (RBS) was introduced in September 2005, Sales Notes were not initially required for sales of shellfish and information on the value of such landings is consequently missing. The value has therefore been estimated for a number of landings, mostly shellfish, relating to voyages starting on or after 1 September 2005.

Chart 12. Liveweight landings by Scottish based vessels, by quarter, 2005

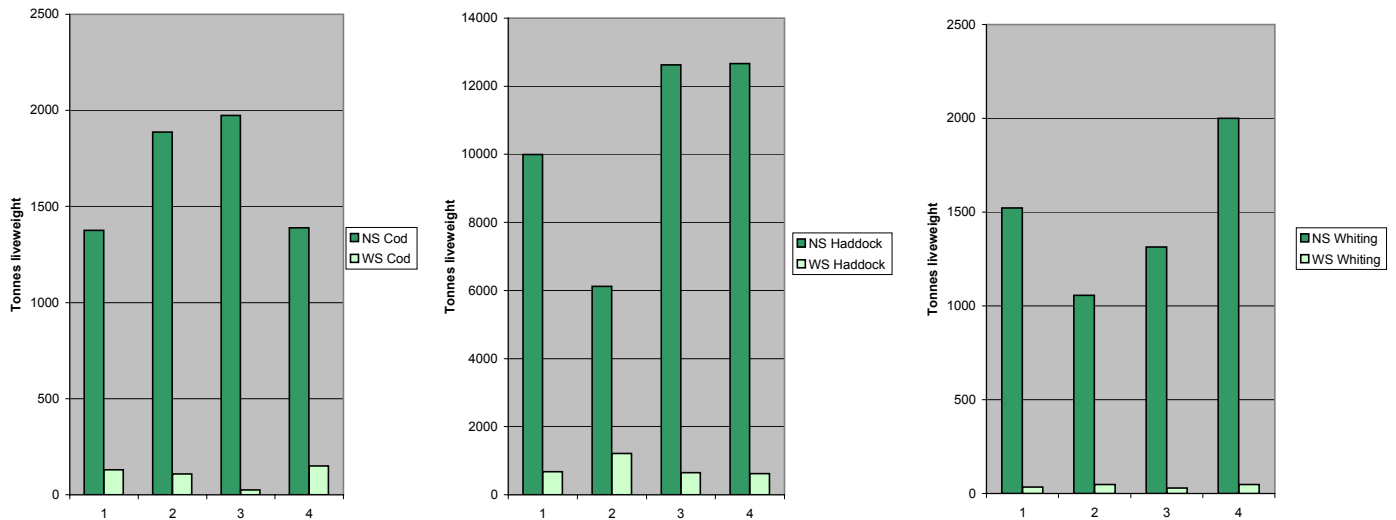
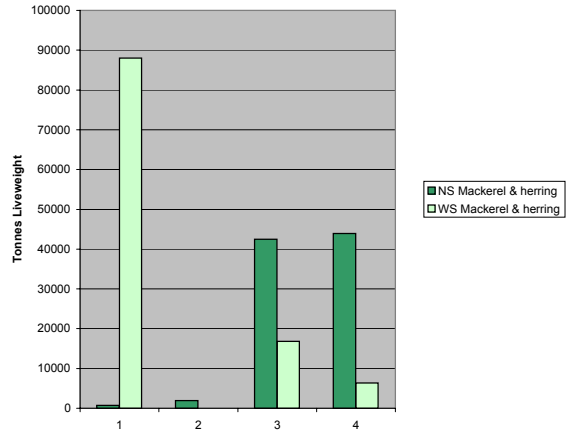
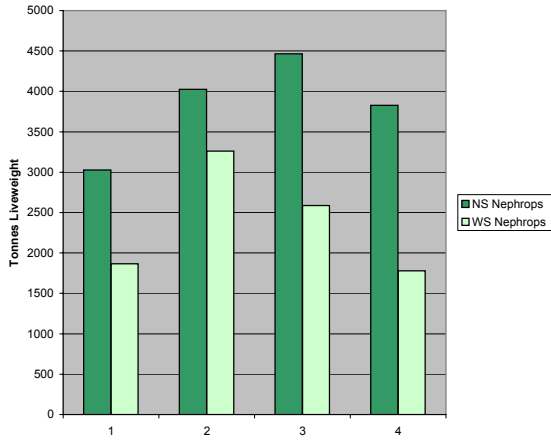


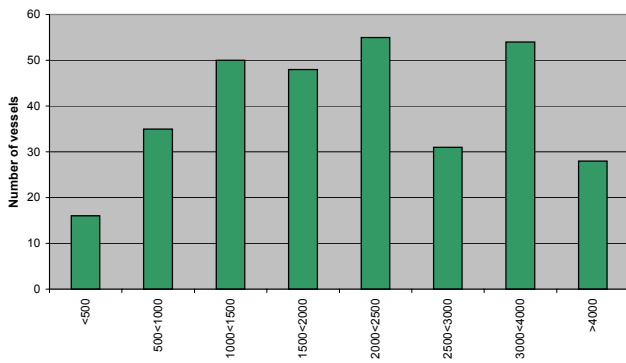
Chart 12. continued



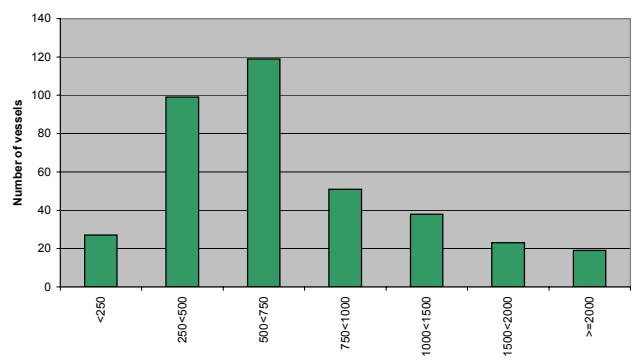
NS:North Sea WS:West of Scotland

Chart 13. Average value of landings per day at sea by Scottish based over 10m based vessels, by vessel type, 2005

Demersal Vessels



Shellfish Vessels



Pelagic Vessels

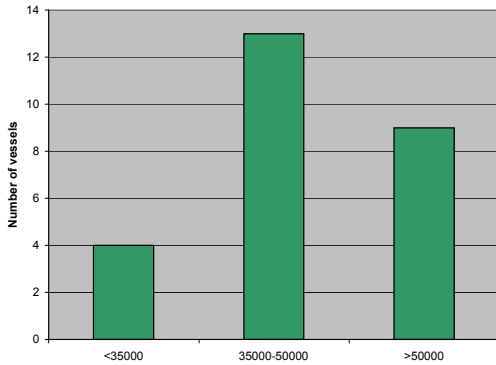
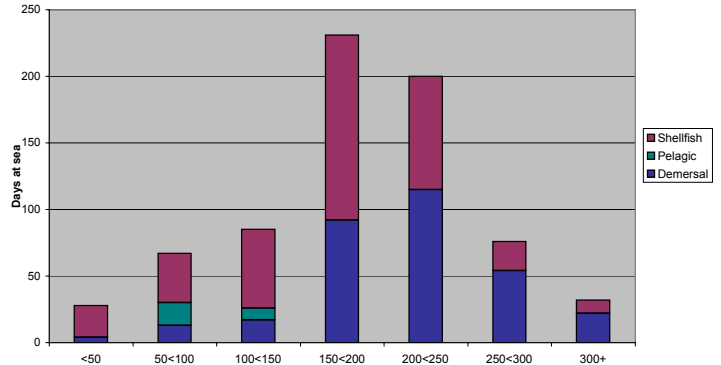


Chart 14. Days at sea by Scottish based over 10m vessels by vessel type, 2005



(1) £ per day. A day in which fishing activity, of whatever duration, takes place is counted as a day fished.

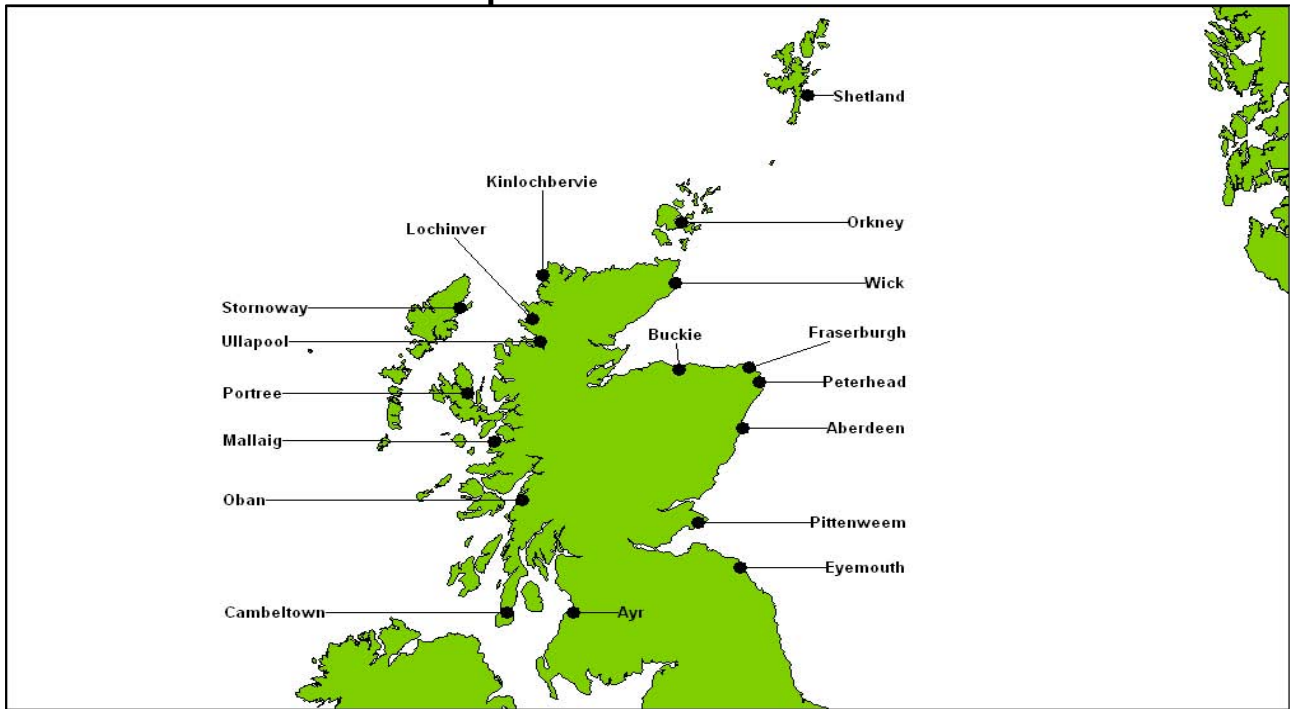
Table 32. Days fished by Scottish based over 10 metres vessels by Ices area, 2005

ICES AREA	Demersal	Pelagic	Shellfish
IVb, Central North Sea	7,936	7	7,027
Vb, Faroes	547	11	-
VIIj, Great Sole	809	24	-
VIIa, Irish Sea	97	3	1,764
VIIh, Little Sole	270	0	183
IVa, Northern North Sea	30,729	351	12,449
VIIc, Porcupine Bank	333	68	-
VIIb, Rockall	966	15	-
IVc, Southern North Sea	375	-	-
VIIk, West Great Sole	1,051	-	-
VIIb, West Ireland	139	20	-
VIa, West Scotland	10,738	403	33,076
VIIe, Western English Channel	368	-	681
Other	1,042	-	125
<b>Total</b>	<b>55,397</b>	<b>902</b>	<b>55,304</b>

Table 33. Days fished by Scottish based over 10 metres vessels by length group, 2005

Length group	Demersal	Pelagic	Shellfish
>10<15	3,763	-	31,764
15<20	15,097	-	19,720
20<25	16,828	-	2,075
25<30	11,202	-	833
30<35	2,631	-	705
35 and over	5,876	902	207
<b>Total</b>	<b>55,397</b>	<b>902</b>	<b>55,304</b>

## Annex 1 - Port districts and ports in Scotland



### Aberdeen

Aberdeen  
Arbroath  
Catterline  
Gourdoun  
Johnshaven  
Montrose  
Stonehaven

### Ayr

Annan  
Ayr  
Ballantrae  
Cumbraes  
Drummore  
Dunure  
Girvan  
Kirkcudbright  
Largs & Greenock  
Maidens  
Portpatrick  
Stranraer  
Troon & Saltcoats  
Whithorn

### Buckie

Buckie  
Burghead  
Findochty  
Hopeman  
Lossiemouth  
Portknockie

### Cambeltown

Ardrishaig  
Arran  
Bruichladdich  
Bute  
Campbeltown  
Carradale  
Colonsay  
Crinan  
Gigha  
Islay  
Jura  
Port Askaig  
Port Ellen  
Tarbert  
Tayinloan  
Tayvallich  
West Loch Tarbert

### Eyemouth

Burnmouth  
Cove  
Dunbar  
Eyemouth  
Granton  
North Berwick  
Port Seton  
St Abbs

### Fraserburgh

Fraserburgh  
Gardenstown  
Macduff  
Pennan  
Portsoy  
Rosehearty  
Sandhaven & Pitullie  
Whitehills

### Kinlochbervie

Eriboll  
Kinlochbervie  
Scourie

### Lochinver

Culkein/Drumbeg  
Kylesku  
Lochinver

### Mallaig

Ardnamurchan  
Arisaig  
Corpach  
Glenuig  
Mallaig  
Salen

### Oban

Coll  
Fort William  
Loch Buie (Mull)  
Loch Scridain (Mull)  
Luig  
Oban  
Tiree  
Tobermory (Mull)

### Orkney

Hoy  
Kirkwall  
Rousay  
S Ronaldsay  
Sanday  
Stromness  
Stronsay  
Tingwall  
Westray

### Peterhead

Boddam  
Peterhead  
Port Errol

### Pittenweem

Anstruther  
Burntisland  
Crail  
Methil & Leven  
Pittenweem  
St Andrews  
St Monans

### Portree

Bracadale  
Broadford  
Dunvegan  
Kyle  
Portree  
Sleat  
Snizort  
Strathaird  
Torridon

### Shetland

Central Mainland  
Lerwick  
Northmavine  
S Mainland & Fair Isle  
Scalloway  
Skerries  
West Mainland  
Whalsay  
Yell, Fetlar & Unst

### Stornoway

Barra  
Benbecula  
Bernera (Lewis)  
Bernera (N Uist)  
Grimsay  
Lochs  
North Harris  
North Uist  
Portnaguran & Ness  
Scalpay  
South Harris  
South Uist & Eriskay  
Stornoway

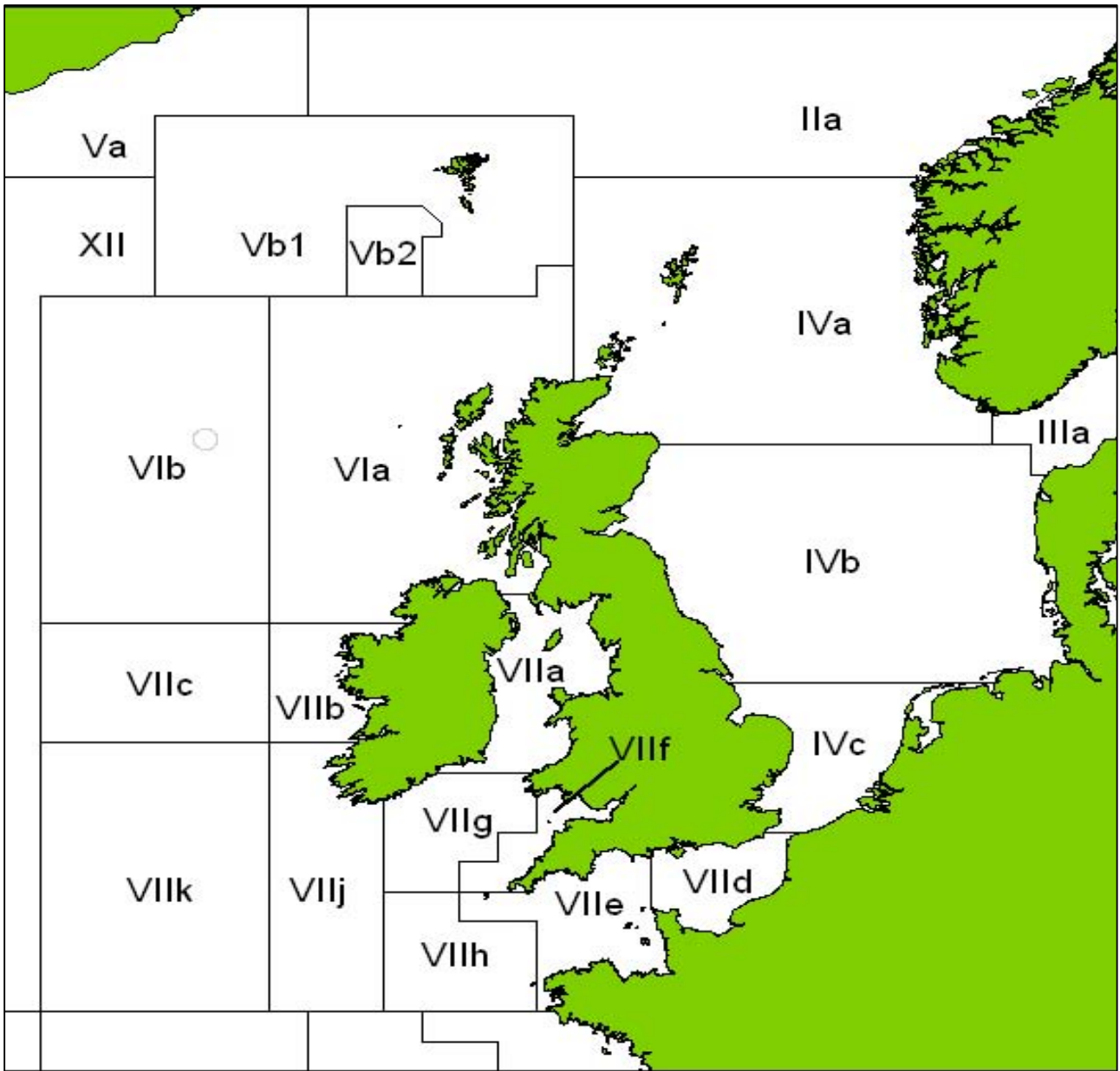
### Ullapool

Achiltibuie  
Aultbea  
Gairloch  
Ullapool

### Wick

Avoch  
Brora  
Dunbeath  
Helmsdale  
Invergordon  
Inverness  
John O'Groats  
Keiss  
Lybster  
Portmahomack  
Portskerra  
Scrabster  
Wick

## Annex 2 - ICES Fishing Areas around the UK Coastline



# SCOTTISH EXECUTIVE STATISTICAL SERVICES

## Our aim

The aim of the Statistical Service is to provide relevant and reliable statistical information, analysis and advice that meet the needs of government, business and the people of Scotland.

## Our Objectives

### 1. To ensure that all statistics work is relevant to meeting user needs by

- Improving the range of statistics and analysis we produce for users inside and outside of government (including for key cross cutting policy areas such as the economy, social justice, area regeneration, equality and rural issues).
- Reviewing and where practicable improving timeliness.
- Providing more statistics disaggregated by age, gender, ethnicity and other characteristics.
- Developing more data for small areas through the Neighbourhood Statistics project.
- Maintaining comparability of statistics across the UK.

### 2. To make better use of our statistics by

- Contributing more directly to policy processes inside and where possible outside government. These include community planning, performance information, measurement of government targets, better policy making and modernising government objectives.
- Improving access to and presentation of data and analysis, through better use of the Web, improved publications and improved systems for holding and accessing background data.
- Improving the advice provided on statistics to Ministers and senior management within the Executive.

### 3. To develop the reliability and integrity of official statistics by

- Assuring and improving quality as an integral part of data collection and analysis and through regular reviews in line with National Statistics quality strategy.
- Developing statistical methods, systems and classifications.
- Maintaining and promoting integrity through implementation of the National Statistics Code of Practice and related protocols.

### 4. To ensure the efficient and effective delivery of statistics products and services by

- Making full use of all sources including administrative sources.
- Minimising the burden on data providers through Survey Monitoring & Advice.
- Ensuring value for money.
- Employing staff with the necessary skills and ensuring development of expertise amongst existing staff.
- Ensuring effective use of Information and Communications Technology.
- Managing, promoting and upholding the integrity of the statistics profession.

### 5. To plan effectively and work together by

- Producing and implementing an annual Scottish Executive Statistics Plan.
- Developing more co-ordinated working arrangements with other analytical services in and out of the Executive.
- Working with the rest of the Government Statistical Service to develop joint approaches/solutions where appropriate.
- Improving the involvement of users and providers, working on a partnership basis wherever possible.

## This is a National Statistics publication

This Statistics Release has been produced to the standards set out in the National Statistics Code of Practice and Release Practice Protocol.

[http://www.statistics.gov.uk/about\\_ns/cop/default.asp](http://www.statistics.gov.uk/about_ns/cop/default.asp)

National Statistics are produced to high professional standards. They undergo regular quality assurance reviews to ensure that they meet customer needs. They are produced free from any political interference.

Details of pre-release access will be provided in the Scottish Executive Statistics Website under 'Forthcoming Releases'.

## Correspondence and enquiries

Enquiries on Scottish Sea Fisheries Statistics 2005 should be addressed to:

Patrick McDonald  
Fisheries Statistics  
Environment and Rural Affairs  
Room 515, Pentland House  
Edinburgh EH14 1TY  
Telephone: 0131-244 6441; Fax: 0131-244 6288  
e-mail fisheriesstatistics@scotland.gsi.gov.uk

General enquiries on Scottish Executive statistics can be addressed to:

Ryan Stewart  
Office of the Chief Statistician  
Scottish Executive  
3 Floor West Rear, St Andrews House  
EDINBURGH EH1 3DG  
Telephone: (0131) 244 0442; Fax: (0131) 244 0335  
e-mail: statistics.enquiries@scotland.gsi.gov.uk

Advice on specific areas of Scottish Executive statistical work can be obtained from staff at the telephone numbers given below:

### Scottish Executive Statistics contacts

Schools – qualifications	(0131) 244 0313
Schools – pupils and teachers	(0131) 244 0309
Further and Higher Education	(0141) 242 0273
The Economy	(0131) 244 2234
Labour market	(0141) 242 5446
Business	(0141) 242 5446
Income, Tax and Benefits	(0131) 244 2583
Local government finance	(0131) 244 7033
Environment, planning & local government staffing	(0131) 244 0445
Equality	(0131) 244 0442
Housing	(0131) 244 7236
Transport	(0131) 244 7255
Health	(0131) 244 3432
Community Care	(0131) 244 3777
Social Justice	(0131) 244 0442
Scottish Executive personnel	(0131) 244 3926
Agricultural census and labour force	(0131) 244 6150
Fisheries	(0131) 244 6441
Courts and law	(0131) 244 2227
Recorded crime and prisons	(0131) 244 2225

### Other contacts for Scottish statistics

Forestry Commission	(0131) 314 6337
The Scottish Funding Councils for Higher and Further Education	(0131) 313 6575
General Register Office for Scotland - Vital statistics and publications	(0131) 314 4243
- Population statistics, census statistics or digital boundary products	(0131) 314 4254

For **general enquiries about National Statistics** in the United Kingdom Government contact the National Statistics Public Enquiry Service on **020 7533 5888**  
minicom: 01633 812399  
Email: info@statistics.gov.uk  
Fax: 01633 652747  
Letters: room DG/18, 1 Drummond Gate, LONDON SW1V 2QQ

You can also find National Statistics on the internet - go to **www.statistics.gov.uk**

[If you would like to be consulted about new or existing statistical collections or to receive notification of forthcoming statistical publications, please register your statistical interest on the Scottish Executive ScotStat web site at www.scotland.gov.uk/scotstat](http://www.scotland.gov.uk/scotstat)

Current staff names, e-mail addresses and the publications listed below as well as a range of other statistical publications can be found on the Scottish Executive Web site at **www.scotland.gov.uk/stats**

Further information on the General Register Office for Scotland is available on the website **www.gro-scotland.gov.uk**

### Most recent Statistical Publications relating to **Freshwater Fisheries**

Ref no.	Title	Last published	Price
	Scottish Salmon and Sea Trout Catches 2005	September 2006	
	Scottish Shellfish Farms Annual Production Survey 2005	May 2006	
	Scottish Fish Farms Annual Production Survey 2004	December 2005	

Additional copies of these publications may be purchased from **Scottish Executive Publication Sales, Blackwell's Bookshop, 53 South Bridge, Edinburgh, EH1 1YS**, Telephone: (0131) 622 8283, Fax: (0131) 622 8258. Cheques should be made payable to 'The Blackwell's Bookshop'.

### Complaints and suggestions

If you are not satisfied with our service, please write to the Chief Statistician, Mr Rob Wishart, 4 Floor East Rear, St Andrews House, Edinburgh, EH1 3DG, Telephone: (0131) 244 0302, e-mail rob.wishart@scotland.gov.uk. We also welcome any comments or suggestions that would help us to improve our standards of service.

ISBN 0-7559-6245-1

Price **£12**

Crown Copyright

Brief extracts from the Crown Copyright material in this publication may be reproduced provided the source is fully acknowledged.

© Crown copyright 2006

This document is also available on the Scottish Executive website:  
[www.scotland.gov.uk](http://www.scotland.gov.uk)

Astron B48447 09/06

Further copies are available from  
Blackwell's Bookshop  
53 South Bridge  
Edinburgh  
EH1 1YS

Telephone orders and enquiries  
0131 622 8283 or 0131 622 8258

Fax orders  
0131 557 8149

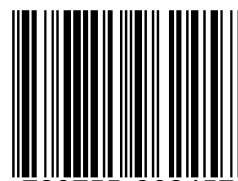
Email orders  
[business.edinburgh@blackwell.co.uk](mailto:business.edinburgh@blackwell.co.uk)

Fish photograph on cover courtesy of:  
Tom McInnes, FRS Marine Laboratory

Astron B48447 9/2006

**£12.00**

ISBN 0-7559-6245-1



9 780755 962457