

DEPARTMENT OF AGRICULTURE AND FISHERIES
FOR SCOTLAND

Scottish Sea Fisheries
Statistical Tables
1985

Crown copyright 1986
First Published 1986

**Brief extracts from this publication may be reproduced provided the source is fully acknowledged;
requests for more extensive reproduction and enquiries about this publication should be made to:**

**Fisheries Economics and Statistics Unit, Department of Agriculture and Fisheries for
Scotland, Room 405, Chesser House, 500 Gorgie Road, Edinburgh EH11 3AW.
Telephone: 031-443 4020 Extension 2145**

DEPARTMENT OF AGRICULTURE AND FISHERIES FOR SCOTLAND

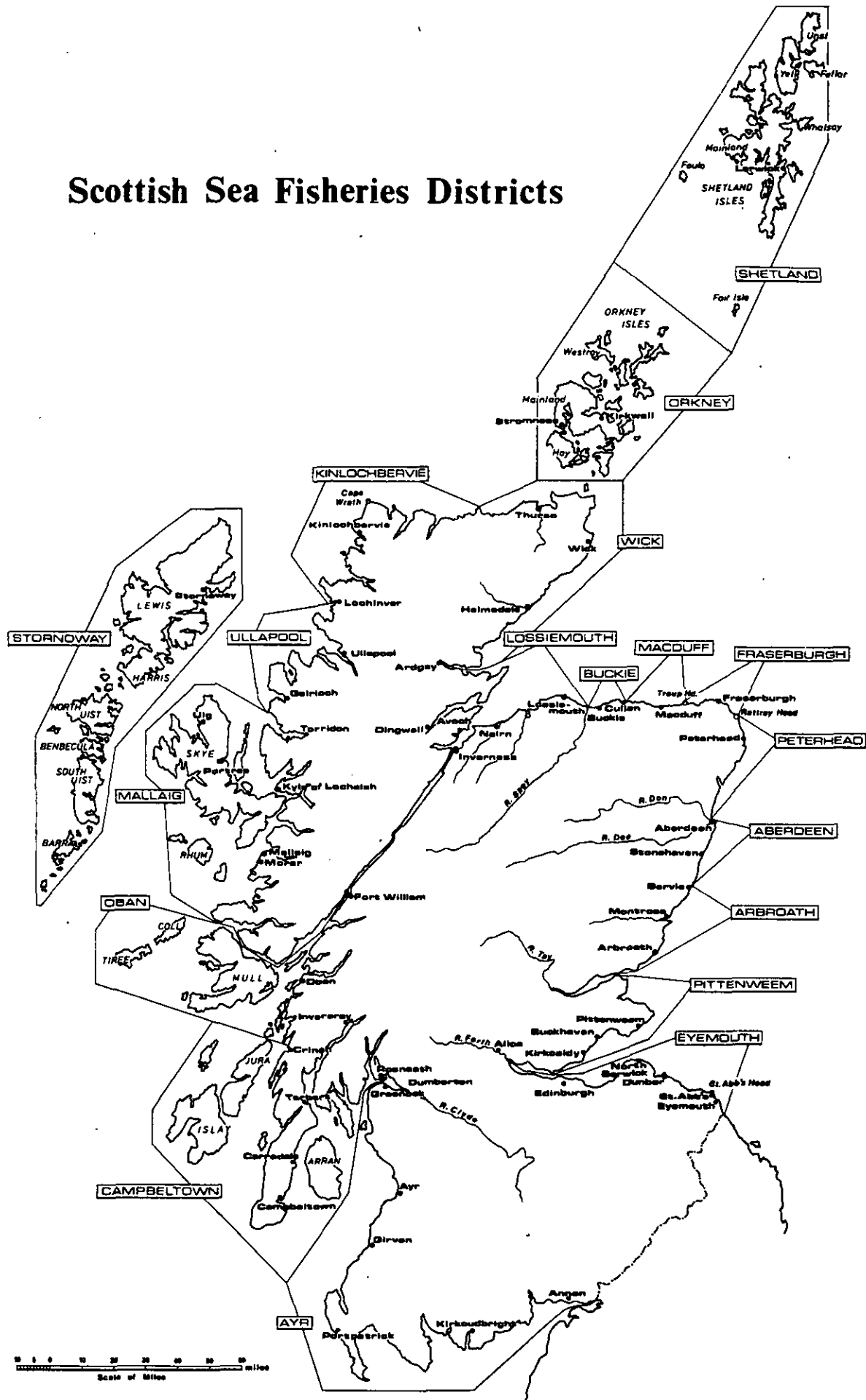
SCOTTISH SEA FISHERIES STATISTICAL TABLES, 1985

CONTENTS

	<i>Pages</i>
Introduction and Explanatory Notes	6
Tables	
1. Fish Landings in United Kingdom	
Country of landing: Weight and value by species groups	9
Country of landing: Weight and value by major individual species	10
2. Fish Landings in Scotland by United Kingdom Vessels	
Weight of each species landed	11
Value of each species landed	12
Average value of each species landed	13
District of Scotland: Weight and value of each species	14
Method of Fishing: Weight and value	20
Each species by method of fishing: Weight and value	22
Each district by method of fishing and fishing effort: Weight and value	26
Major species by month: Weight, value and average price	28
Value of landings per month by major fishing methods	29
3. Landings in Scotland by United Kingdom Vessels from Specified ICES Areas	
Fishing effort, Value by species group, Weight by individual species by main fishing methods	
Total North Sea (ICES Areas IVa, b and c)	32
Northern North Sea (ICES Area IVa)	33
Middle North Sea (ICES Area IVb)	34
West of Scotland (ICES Area VIa)	35
Norwegian Coast (ICES Area IIa), Southern North Sea (ICES Area IVc), Faroe (ICES Area Vb),	36
Rockall (ICES Area VIb), Irish Sea (ICES Area VIIa), Porcupine Bank (ICES Area VIIc)	37
4. Landings by Scottish Vessels and Other United Kingdom Vessels	
Scottish vessels: Base district of vessel by landing district: weight and value	38
Scottish vessels landing in England and Wales and Isle of Man	40
Scottish vessels and United Kingdom vessels landing in United Kingdom	40
Scottish vessels, and other United Kingdom vessels landing in Scotland by method of fishing and length group	41
5. Landings in Scotland by United Kingdom Vessels	
Weight and value by creek	42
6. Landings in Scotland by Foreign Vessels	
Method of fishing by individual species: weight and value	45
Catches from specified ICES Areas by individual species	46
Nationality of vessel, port of landing and method of fishing: by fishing effort, by weight and value	47

	<i>Pages</i>
7. Scottish Fishing Vessels	
Number of vessels by size	49
Number of vessels by size and base district	49
Changes in over 30 feet fleet	50
Number of vessels by method of fishing normally engaged in	50
Fishermen employed	51
Number of vessels by base district and fishermen by district of residence	51
8. Disposal and Processing of Fish	
Disposal of Scottish herring, mackerel and sprat catch	52
Raw materials used in the production of fishery by-products	52
Production of fishing by-products	53
Weight and value of fish processed according to method of process	53

Scottish Sea Fisheries Districts



D.A.F.S. 1984

EXPLANATORY NOTES

Species

The various species of fish are divided into 3 main groups; demersal, pelagic and shell fish. Demersal species live on or near the sea bed; pelagic species are found mainly in shoals near the surface.

Landings

Data on landings in Scotland is obtained from sales notes completed at the first auction of the fish, and additional information on effort and grounds is obtained, from the EC log book completed by the skippers. The quantities in the tables are expressed in terms of a standard landed weight; in the case of demersal fish (excluding Norway Pout and Sandeels) this means gutted fish with head on; for the other species including shell fish it means whole fish.

Vessels (Tables 23, 24, 25 and 26)

Data on vessels is obtained from records kept by the Department and updated by reports of officers in the Sea Fisheries Inspectorate based at each of the Sea Fisheries Districts. All vessels actively engaged in commercial fishing and registered under the Merchant Shipping Act of 1894 are recorded. The base district of a vessel is the district of residence of the skipper or the majority of owners.

Disposal of Fish (Table 29)

Disposal information is obtained by officers of the Sea Fisheries Inspectorate from information supplied by buyers at the point of sale. The term klondyking refers to direct landings to foreign container or factory vessels for immediate export.

Processing (Tables 30, 31 and 32)

This data is obtained from fish processing plants in each fishery district, by interview or by questionnaire.

Fishermen employed (Tables 27, 28)

Estimates of numbers of fishermen regularly and partially employed are made at 31 December each year by the Fisheries Officers in each Sea Fisheries District.

Symbols used in tables

The following symbols are used in the tables:

- + = less than half final digit
- . . = not available
- = nil

Rounding

In some tables, where figures have been rounded, the sum of the constituent items may not always agree exactly with the total shown.

Fishing Regions

The International Council for the Exploration of the Sea (ICES) fishing areas (Divisions) are defined on the map before table 12.

Other Departmental Publications on Scottish Sea Fisheries

The Scottish Fishing Fleet: annual publication lists details of each vessel in the Scottish fleet and contains summary statistical tables about the fleet over the last 10 years. Price £6.

Costs and Earnings Survey: occasional publication, last published for 1983; contains results of the Department's survey into fishermen's costs and earnings over 7 years. Price £2.

These publications are available from the Scottish Office Library, New St. Andrew's House, Edinburgh.

DESCRIPTION OF FISHING METHODS REFERRED TO IN THE TABLES

Motor Trawl. The gear consists of a net in the shape of a funnel attached to the vessel by wire ropes or "warps". As the net is towed over the sea floor the mouth is kept open by a combination of boards, floats and weights. The tail end of the net where the fish are trapped is known as the "cod-end". The length of the warps is normally about 3.5-4 times the depth of the water and can extend in depths of 110m to about 450m from the stern of the vessel. This method is used by the deep sea trawlers operating mainly out of Aberdeen. Other single-vessel trawling methods ("Industrial Trawl", "Light Trawl" and "Nephrop Trawl") follow the same principles. Light Trawl and Nephrop Trawl are used by "Inshore" vessels in the 10m-25m group, many of which are multi-purpose and may also use seine nets (see below).

Two-Boat Trawl ("Pair Trawl": "Mid-Water Trawl"). A variant of trawling used to fish at intermediate depths between the surface and the sea floor. The net is towed by two vessels which may be up to 400m apart, the depth of the net being mainly controlled by the length of the warps and the vessels' speed, used by vessels in the inshore fleet for catching both demersal and pelagic species.

Seine Net. Another bottom fishing method. The gear consists of a sac of netting with wings on either side, kept in position vertically by floats and weights. Long warps are attached to the net, one of which is initially fastened to a flag pole passed through a buoy ("dahn buoy"). The vessel steams forward paying out warp, then the net itself, then more warp to form a rough triangle back to the dahn, which may be some 1-3kms distant from the net. The vessel then steams ahead, causing the warps to herd the fish into the path of the net, which is finally winched aboard.

Purse Seine. This method involves complete encirclement of a shoal or area known to contain fish. As the name implies the net, which may be up to 1200m long and 240m deep, is shaped like a purse. One end is first attached to a buoy, and the vessel then steams round the shoal paying out the net as it goes. On return to the buoy the net is closed at the foot or "pursed". The net is then winched to the side of the vessel and the fish taken on board by means of a fish pump. This gear requires relatively heavy equipment and is not generally suitable for vessels below 20m; used to catch pelagic species mainly herring, mackerel and sprats. Ring nets are similar except that the net is much smaller and operated by two vessels. This last method is now uncommon, but still used by a few relatively small vessels on the West Coast of Scotland.

Beam Trawl. The beam trawl is a bottom fishing trawl net, used mainly for catching flatfish with the headrope attached to a beam towed along the bottom on runners at either end. The net is heavily weighted with chain on the underside and has trickler chains running in front when fishing.

Gill Nets. Sheets of netting each about 35m long and totalling up to 1500m or more are paid out to form a curtain of barrier in the path of on-coming fish. The net is kept vertical by floats on the headrope and a heavy footrope, the fish being caught in the mesh by their gills. For white fish the nets are anchored near to the sea floor from which they are made to stand upright (by means of floats) like a fence.

Great Lines. These are lines of thin rope totalling up to 15,000m long with hooks attached at intervals. The hooks are baited and the lines then laid along the sea floor, their position being marked by floats at each end. This method is especially suitable for rocky and uneven grounds where other methods may be impracticable. Used by vessels in the 25m-30m groups, which may be away for up to 3 weeks or more on each trip. There are now few vessels using this method in the Scottish fleet.

Small Lines. Work on the same principle, but the vessels are smaller and usually return to port every day.

Creels. These are traps or "pots" used to catch shellfish, especially lobsters, nephrops and crabs. The pots vary in size and are generally made from a combination of wood, cane and netting. They are normally arranged on the sea floor in lots between 10 and 50, depending on the capacity of the vessel fishing, and are checked (weather permitting) daily.

Dredge. Used to catch scallops and queen scallops. The apparatus consists of a steel-framed "mouth" attached to a bag of light metal link chain. As the dredge is towed along the sea floor metal teeth attached to the underside of the "mouth" rake the shellfish into the bag. The number of dredges may vary between one and six depending on the power and size of the vessel, which may be up to 20m.

COUNTRY OF LANDING: WEIGHT AND VALUE BY SPECIES GROUPS

	Weight (Thou Tonnes)					Value (£ million)				
	1981	1982	1983	1984	1985	1981	1982	1983	1984	1985
(a) UK Vessels										
(i) Scotland										
Demersal	260.7	296.2	292.8	282.7	294.7	90.9	106.4	121.1	136.0	147.2
Pelagic	152.9	172.9	173.6	226.0	263.1	15.5	18.5	19.9	24.4	29.0
Shellfish	30.3	29.0	32.7	34.5	34.7	21.1	23.8	29.2	33.5	39.0
All Species	444.0	498.2	499.1	543.3	592.6	127.5	148.7	170.2	193.9	215.1
(ii) England and Wales										
Demersal	135.6	135.4	124.0	101.1	93.5	70.9	80.0	77.0	71.8	74.7
Pelagic	115.3	84.8	72.2	37.1	17.8	10.8	8.2	6.8	4.1	2.0
Shellfish	32.6	31.0	34.2	33.6	35.4	13.3	14.9	18.0	20.4	21.5
All Species	283.5	251.2	230.5	171.8	146.8	95.1	103.1	101.8	96.3	98.3
(iii) Northern Ireland										
Demersal	14.5	16.4	10.6	11.2	14.0	3.5	4.5	4.0	3.9	5.3
Pelagic	1.9	3.9	2.9	2.9	2.7	0.3	0.6	0.4	0.4	0.4
Shellfish	4.0	5.0	5.3	4.5	4.7	2.7	3.8	4.0	3.4	4.4
All Species	20.4	25.3	18.8	18.5	21.3	6.5	8.8	8.5	7.6	10.1
(iv) United Kingdom										
Demersal	410.9	448.0	427.5	395.0	402.3	165.3	190.9	202.1	211.7	227.2
Pelagic	270.1	261.7	248.7	266.0	283.5	26.7	27.2	27.1	28.9	31.4
Shellfish	66.9	64.9	72.2	72.6	74.8	37.2	42.5	51.2	57.3	64.9
All Species	747.9	774.6	748.4	733.7	760.6	229.1	260.6	280.5	297.9	323.5
(b) Foreign Vessels										
(v) United Kingdom										
Demersal	56.6	53.0	47.6	43.0	36.3	24.6	26.7	25.0	23.9	27.0
Pelagic	0.8	11.4	27.6	15.0	15.0	0.1	1.4	3.1	2.0	1.0
Shellfish	0.1	0.1	0.5	0.1	1.5	0.1	0.1	0.4	0.1	1.4
All Species	57.5	64.4	75.7	58.1	52.8	24.7	28.2	28.4	26.0	29.5
(c) UK and Foreign Vessels										
(vi) United Kingdom										
Demersal	467.4	501.0	475.2	438.0	438.6	189.8	217.6	227.1	235.6	254.2
Pelagic	271.0	273.0	276.3	281.0	298.6	26.7	28.7	30.2	30.9	32.5
Shellfish	67.0	65.0	72.6	72.7	76.3	37.2	42.6	51.6	57.3	66.3
All species	805.4	839.0	824.1	791.8	813.4	253.8	288.8	308.9	323.9	353.0

COUNTRY OF LANDING: WEIGHT AND VALUE BY MAJOR INDIVIDUAL SPECIES

	Weight (Thou Tonnes)					Value (£ million)				
	1981	1982	1983	1984	1985	1981	1982	1983	1984	•1985
(a) UK Vessels										
(i) Scotland										
Cod	54.07	54.90	56.40	53.93	58.62	30.01	35.49	37.81	38.15	43.92
Haddock	84.38	112.57	108.53	95.74	119.08	32.05	43.40	50.93	57.45	60.78
Hake	2.71	1.65	1.33	1.49	1.54	3.04	2.04	1.36	1.39	2.00
Monks	2.68	2.44	2.83	4.13	4.98	2.10	2.03	2.68	4.17	5.88
Plaice	5.21	5.03	4.85	5.05	5.43	2.47	2.73	2.99	3.04	3.26
Saithe	8.13	8.66	7.56	9.14	12.16	2.19	2.45	2.12	2.03	3.22
Sandeels	52.64	62.91	50.06	46.75	35.81	1.53	1.87	1.54	1.59	1.11
Whiting	35.56	34.02	45.49	48.48	35.39	10.84	9.87	14.59	19.60	14.92
Herring	32.60	41.58	51.39	67.83	86.86	4.24	5.08	6.49	8.52	10.53
Mackerel	114.63	130.00	120.02	155.01	170.91	10.97	13.32	13.22	15.59	18.04
Norway lobsters	12.56	12.08	14.19	16.08	17.89	12.43	14.24	16.83	19.05	24.28
(ii) England and Wales										
Cod	58.86	56.18	53.29	34.73	29.28	29.80	34.63	33.12	25.75	24.29
Haddock	15.65	16.41	14.10	11.70	12.98	6.07	6.90	6.42	6.74	6.87
Hake	1.09	1.20	0.66	0.80	0.96	1.26	1.70	0.80	1.18	1.60
Monks	1.79	2.03	4.66	4.73	3.67	2.38	2.81	3.71	4.26	4.28
Plaice	19.90	19.13	16.03	16.26	14.83	10.29	11.03	10.72	10.98	10.47
Saithe	5.56	7.18	4.65	2.53	1.68	1.60	2.17	1.27	0.64	0.50
Sandeels	+	0.16	-	-	-	+	0.01	-	-	-
Whiting	7.34	6.71	6.28	6.56	6.44	1.78	1.70	1.73	2.02	2.03
Herring	1.90	4.10	0.82	1.88	5.75	0.31	0.42	0.20	0.29	0.56
Mackerel	82.55	54.02	54.52	30.20	2.18	8.46	5.85	5.31	3.07	0.50
Norway lobsters	1.84	3.35	2.92	2.12	2.58	1.69	3.56	3.40	2.40	3.18
(iii) Northern Ireland										
Cod	2.81	3.24	2.92	2.22	2.14	1.03	1.50	1.54	1.36	1.73
Haddock	0.05	0.03	0.02	0.03	0.18	0.02	0.01	0.01	0.01	0.11
Hake	0.51	0.34	0.31	0.17	0.17	0.52	0.39	0.36	0.22	0.25
Monks	0.29	0.41	0.36	0.33	0.24	0.10	0.13	0.18	0.20	0.20
Plaice	0.13	0.15	0.17	0.19	0.19	0.05	0.05	0.06	0.07	0.09
Saithe	0.49	0.73	0.56	0.40	0.61	0.11	0.15	0.13	0.09	0.15
Sandeels	-	-	-	-	-	-	-	-	-	-
Whiting	9.05	9.93	5.26	5.66	8.37	1.38	1.89	1.39	1.39	2.04
Herring	1.82	2.26	1.99	1.78	2.62	0.31	0.40	0.30	0.26	0.38
Mackerel	0.06	1.65	0.94	1.12	0.02	0.01	0.16	0.12	0.11	+
Norway lobsters	3.75	4.49	4.95	4.03	4.32	2.48	3.49	3.83	3.10	4.10
(iv) United Kingdom										
Cod	115.73	114.32	112.60	90.87	90.05	60.84	71.62	72.47	65.26	69.95
Haddock	100.08	129.00	122.65	107.48	132.24	38.13	50.31	57.36	64.20	67.76
Hake	4.31	3.19	2.29	2.46	2.68	4.82	4.13	2.52	2.79	3.85
Monks	4.75	4.88	7.85	9.18	8.89	4.57	4.97	6.57	8.63	10.37
Plaice	25.24	24.31	21.05	21.49	20.45	12.81	13.82	13.77	14.10	13.82
Saithe	14.17	16.58	12.77	12.07	14.44	3.89	4.78	3.52	2.76	3.87
Sandeels	52.64	63.07	50.06	46.75	35.81	1.53	1.87	1.54	1.59	1.11
Whiting	51.95	50.66	57.03	60.70	50.20	14.01	13.45	17.72	23.01	19.00
Herring	36.32	47.94	54.19	71.48	95.23	4.85	5.90	6.99	9.08	11.47
Mackerel	197.23	185.67	175.48	186.33	173.11	19.44	19.33	18.65	18.77	18.55
Norway lobsters	18.15	19.92	22.06	22.23	24.79	16.59	21.29	24.06	24.55	31.55
(b) Foreign Vessels in United Kingdom										
Cod	32.26	27.29	23.36	22.94	22.40	15.89	16.55	13.86	14.64	17.47
Haddock	6.78	5.37	4.34	2.27	2.88	3.20	2.93	2.45	1.61	2.32
Hake	0.04	0.02	+	0.04	0.03	0.04	0.01	+	0.04	0.03
Monks	0.10	0.08	0.21	0.37	0.28	0.09	0.07	0.20	0.32	0.31
Plaice	2.27	3.19	5.02	4.57	3.35	1.26	1.83	3.56	3.31	2.44
Saithe	7.65	9.16	5.65	2.72	3.05	2.15	2.86	1.78	0.84	1.25
Sandeels	4.23	2.94	2.39	1.28	-	0.16	0.11	0.10	0.06	-
Whiting	0.20	0.63	0.06	0.13	0.08	0.04	0.16	0.02	0.05	0.03
Herring	0.16	0.34	0.04	1.24	2.42	0.03	0.02	0.02	0.20	0.24
Mackerel	0.36	8.57	26.26	13.40	5.23	0.02	0.86	2.90	1.82	0.44
Norway lobsters	0.02	0.03	0.05	0.03	0.07	0.01	0.03	0.05	0.03	0.11
(c) UK & Foreign Vessels in United Kingdom										
Cod	147.99	141.61	135.96	113.82	112.45	76.73	88.17	86.33	79.90	87.41
Haddock	106.86	134.37	126.99	109.74	135.11	41.33	53.24	59.81	65.81	70.08
Hake	4.35	3.21	2.30	2.49	2.71	4.86	4.14	2.52	2.84	3.88
Monks	4.85	4.95	8.06	9.55	9.17	4.66	5.04	6.77	8.94	10.67
Plaice	27.51	27.50	26.07	26.06	23.80	14.07	15.65	17.33	17.41	16.26
Saithe	21.82	25.74	18.42	14.79	17.49	6.03	7.63	5.30	3.60	5.13
Sandeels	56.87	66.01	52.46	48.02	35.81	1.69	1.98	1.64	1.65	1.11
Whiting	52.15	51.29	57.09	60.83	50.28	14.04	13.60	17.73	23.06	19.03
Herring	36.48	48.28	54.24	72.72	97.65	4.88	5.92	7.01	9.28	11.71
Mackerel	197.59	194.24	201.73	199.72	178.34	19.46	20.19	21.54	20.59	18.99
Norway Lobsters	18.17	19.95	22.11	22.25	24.86	16.61	21.32	24.11	24.57	31.66

FISH LANDINGS IN SCOTLAND BY UNITED KINGDOM VESSELS

TABLE 3

WEIGHT OF EACH SPECIES LANDED

TONNES

	1978	1979	1980	1981	1982	1983	1984	1985
DEMERSAL FISH								
Blue ling	..	2	2	1	1	2	+	-
Brill	26	17	16	11	10	11	15	23
Catfish	484	554	494	479	601	880	834	1,028
Cod	42,658	42,829	44,846	54,067	54,898	56,397	53,926	58,624
Conger eels	91	108	73	90	79	94	141	135
Dabs	661	654	615	600	853	888	754	885
Dogfish	7,630	6,539	4,440	3,528	3,248	3,883	4,408	5,998
Dover sole	35	46	71	50	53	33	23	34
Flounders	59	50	28	11	16	10	17	16
Greenland halibut	..	+	-	-	+	-	-	-
Gurnards	142	93	30	14	13	24	49	49
Haddock	63,114	55,527	65,581	84,381	112,571	108,530	95,739	119,075
Hake	1,243	1,214	1,487	2,712	1,652	1,325	1,491	1,544
Halibut	195	223	151	85	119	113	98	92
Lemon sole	2,256	2,171	2,365	2,004	1,931	2,551	2,438	2,262
Ling	1,623	1,593	1,546	1,723	1,324	1,493	1,813	2,752
Lythe	515	435	359	361	266	326	370	579
Megrim	781	764	949	1,011	653	711	1,620	2,036
Monks	3,260	3,239	3,673	2,675	2,441	2,828	4,125	4,978
Norway pout	5,797	3,038	1,804	1,158	586	+	112	64
Plaice	4,463	4,825	5,224	5,207	5,030	4,853	5,047	5,428
Roundnose grenadier	+	+	+	+	+	1
Redfish	55	2	+	+	+	1	2	1
Saithe	17,493	10,211	7,934	8,124	8,664	7,561	9,135	12,155
Sandeels	28,055	13,392	32,144	52,640	62,907	50,064	46,745	35,809
Skate	3,195	2,845	2,924	2,606	2,645	2,983	3,354	3,504
Torsk	357	393	501	251	192	89	7	23
Turbot	131	97	117	136	106	125	134	161
Whiting	45,488	49,465	44,436	35,559	34,018	45,485	48,482	35,386
Witches	1,019	1,043	997	890	1,002	1,260	1,587	1,789
Livers	1	1	+	1	+	+	+	3
Roes	414	350	372	357	352	311	260	283
Other demersal	80	71	12	13	13	17	23	24
TOTAL	231,320	201,791	223,191	260,744	296,244	292,847	282,749	294,739
PELAGIC FISH								
Herring	13,841	2,011	2,237	32,596	41,581	51,385	67,827	86,862
<i>Horse mackerel</i>	14	40	1	17	83	38	703	2,381
Mackerel	107,415	108,432	101,292	114,632	129,998	120,015	155,008	170,910
Blue whiting	1,600	1,500	6,823	2,451	-	-	-	+
Sprats	45,231	12,843	10,248	3,236	1,254	2,122	2,479	2,946
Other pelagic	19	63	-	-	-	-	2	-
TOTAL	168,120	124,889	120,601	152,932	172,916	173,560	226,020	263,099
WET FISH	399,440	326,680	343,792	413,676	469,160	466,407	508,769	557,838
SHELL FISH								
Brown shrimps	20	39	31	25	27	11	13	14
Whelks	63	26	26	9	1	2	-	-
Periwinkles	2,563	2,865	2,725	2,710	2,337	2,403	2,284	2,035
Edible crabs	2,638	2,380	2,530	2,637	3,161	4,004	4,622	4,236
Lobsters	517	461	428	453	383	506	629	619
Oysters	1	1	-	-	+	+	-	-
Pink shrimps	2,024	309	407	341	354	1,836	25	1,347
Crawfish	..	3	3	4	5	41	30	20
Cockles	-	+	+	10	+	1	+	29
Scallops	2,837	3,710	5,320	5,521	6,532	5,090	6,000	4,220
Mussels	922	819	526	146	50	33	23	312
Norway lobsters	11,338	12,887	10,440	12,561	12,084	14,188	16,077	17,887
Squids	242	82	104	217	389	155	341	255
Queen scallops	3,547	4,712	5,020	5,684	3,699	4,433	4,167	3,315
Velvet crabs	330	430
Squat lobsters	+	-
Other shellfish	1	+	3	2	5	11	2	12
TOTAL	26,712	28,293	27,563	30,320	29,027	32,713	34,543	34,732
TOTAL OF ALL FISH	426,152	354,973	371,355	443,996	498,187	499,121	543,312	592,570

FISH LANDINGS IN SCOTLAND BY UNITED KINGDOM VESSELS

TABLE 4

VALUE OF EACH SPECIES LANDED

£'000

	1978	1979	1980	1981	1982	1983	1984	1985
DEMERSAL FISH								
Blue ling	..	1	1	+	+	1	+	-
Brill	20	15	17	12	11	13	19	33
Catfish	183	204	168	172	222	319	383	550
Cod	23,957	26,389	26,837	30,007	35,494	37,813	38,153	43,921
Conger eels	22	25	17	24	25	29	42	37
Dabs	175	189	166	183	254	245	246	289
Dogfish	1,675	1,608	935	793	711	755	946	1,506
Dover sole	69	88	152	98	100	66	48	85
Flounders	7	5	3	1	2	2	3	2
Greenland halibut	..	+	-	-	+	-	-	-
Gurnards	15	11	7	4	4	6	13	11
Haddock	29,794	27,175	27,042	32,048	43,403	50,930	57,451	60,776
Hake	952	1,059	1,215	3,039	2,042	1,357	1,389	1,998
Halibut	358	483	344	216	319	294	265	313
Lemon sole	1,580	1,721	1,953	2,068	2,035	2,213	2,369	2,724
Ling	643	639	546	625	555	592	649	1,250
Lythe	230	195	152	143	132	155	199	352
Megrim	256	245	319	420	256	270	925	1,692
Monks	2,146	2,124	2,681	2,096	2,033	2,676	4,167	5,883
Norway pout	184	88	55	37	19	+	5	2
Plaice	2,087	2,418	2,437	2,471	2,734	2,992	3,043	3,260
Roundnose grenadier	+	+	+	+	+	+
Redfish	15	+	+	+	+	+	1	+
Saithe	4,719	3,303	2,553	2,185	2,454	2,116	2,032	3,221
Sandeels	808	297	955	1,534	1,868	1,536	1,590	1,107
Skate	1,035	970	1,037	1,003	954	1,070	1,144	1,217
Torsk	143	136	180	82	66	30	2	8
Turbot	279	183	255	276	256	342	389	550
Whiting	13,628	16,248	13,706	10,843	9,866	14,593	19,598	14,920
Witches	292	334	277	287	385	476	718	1,170
Livers	1	1	1	1	1	1	1	1
Roes	204	239	251	218	234	196	193	255
Other demersal	22	15	6	6	10	13	16	17
TOTAL	85,500	86,406	84,267	90,892	106,444	121,102	135,997	147,153
PELAGIC FISH								
Herring	5,433	1,146	932	4,239	5,083	6,492	8,523	10,527
Horse mackerel	1	7	+	4	4	2	35	105
Mackerel	9,696	10,275	8,027	10,970	13,321	13,224	15,593	18,042
Blue whiting	78	41	191	69	-	-	-	+
Sprats	2,326	927	812	230	101	210	292	300
Other pelagic	4	2	-	-	-	-	3	-
TOTAL	17,538	12,396	9,963	15,512	18,510	19,928	24,445	28,974
WET FISH								
TOTAL	103,038	98,802	94,230	106,404	124,953	141,030	160,442	176,126
SHELL FISH								
Brown shrimps	22	53	35	37	40	14	23	27
Whelks	8	4	4	1	+	1	-	-
Periwinkles	544	671	718	739	680	770	779	745
Edible crabs	579	513	579	747	1,014	1,583	1,756	1,654
Lobsters	2,791	2,582	1,872	2,093	2,078	2,916	3,954	4,456
Oysters	1	1	-	-	+	+	-	-
Pink shrimps	1,433	278	386	295	286	1,759	19	1,234
Crawfish	..	14	15	21	24	202	172	134
Cockles	-	+	+	1	+	+	+	6
Scallops	1,838	2,210	3,288	3,253	4,171	3,763	5,541	4,526
Mussels	36	34	32	18	8	7	5	25
Norway lobsters	11,058	15,950	11,196	12,425	14,236	16,832	19,045	24,275
Squids	171	67	114	160	379	196	645	383
Queen scallops	693	1,045	1,123	1,293	828	1,133	1,182	971
Velvet crabs	352	535
Squat lobsters	+	-
Other shellfish	+	+	6	1	9	7	5	4
TOTAL	19,174	23,421	19,368	21,084	23,754	29,183	33,477	38,976
TOTAL OF ALL FISH	122,212	122,223	113,598	127,488	148,707	170,213	193,920	215,103

FISH LANDINGS IN SCOTLAND BY UNITED KINGDOM VESSELS

TABLE 5

AVERAGE VALUE OF EACH SPECIES LANDED

£/TONNE

	1978	1979	1980	1981	1982	1983	1984	1985
DEMERSAL FISH								
Blue ling	..	315.0	275.8	278.3	301.4	377.9	400.0	-
Brill	766.8	886.7	1,063.3	1,047.1	1,074.8	1,217.3	1,276.7	1458.3
Catfish	377.9	368.8	339.3	359.8	369.3	362.8	458.5	534.6
Cod	561.6	616.1	598.4	554.9	646.5	670.5	707.5	749.2
Conger eels	244.7	234.2	233.2	272.5	315.3	312.4	298.2	271.3
Dabs	264.8	288.3	269.7	305.4	297.7	276.2	326.2	327.2
Dogfish	219.5	245.8	210.6	224.9	219.0	194.5	214.7	251.1
Dover sole	1,977.8	1,927.8	2,145.1	1,981.2	1,904.3	1,974.6	2,108.0	2,510.7
Flounders	109.7	96.7	113.7	100.9	145.5	159.6	165.1	143.7
Greenland halibut	..	-	-	-	-	-	-	-
Gurnards	105.9	122.2	222.2	276.1	290.7	257.2	253.5	234.1
Haddock	472.1	489.4	412.3	379.8	385.6	469.3	600.1	510.4
Hake	766.3	871.6	817.1	1,120.7	1,235.9	1,024.3	931.4	1,294.6
Halibut	1,838.5	2,163.1	2,280.6	2,539.9	2,677.0	2,600.1	2,710.8	3,384.0
Lemon sole	700.4	793.0	825.9	1,031.7	1,053.8	867.6	971.8	1,204.1
Ling	396.7	401.1	353.1	362.5	418.9	396.5	358.3	454.2
Lythe	446.6	448.8	424.1	396.9	495.8	475.3	537.2	607.4
Megrimms	327.2	320.4	335.9	415.2	392.1	380.1	571.3	831.1
Monks	658.4	655.6	730.0	783.5	832.9	946.2	1,010.3	1,181.7
Norway pout	31.8	29.0	30.4	32.0	32.2	410.0	45.9	29.3
Plaice	467.5	501.0	466.5	474.6	543.7	616.5	603.0	600.7
Roundnose grenadier	1,000.0	305.0	300.0	344.4	500.0	371.7
Redfish	274.2	257.0	270.0	-	200.0	497.5	420.0	488.3
Saithe	269.8	323.4	321.7	269.0	283.2	279.9	222.4	265.0
Sandeels	28.8	22.2	29.7	29.1	29.7	30.7	34.0	30.9
Skate	324.0	340.9	354.6	385.0	360.6	358.8	341.1	347.4
Torsk	401.2	345.4	358.3	324.8	345.3	335.8	313.0	366.8
Turbot	2,128.7	1,880.6	2,171.2	2,036.7	2,412.4	2,735.1	2,898.9	3,420.3
Whiting	299.6	328.4	308.4	304.9	290.0	320.8	404.2	421.6
Witches	286.6	320.1	278.1	322.1	384.5	377.8	452.4	654.2
Livers	200.0	778.3	210.0	61.7	415.0	326.7	207.5	388.0
Roes	492.4	682.1	675.6	609.7	666.2	631.1	741.4	899.6
Other demersal	270.1	209.6	516.5	467.0	818.7	773.9	665.0	732.6
TOTAL	369.6	428.1	377.6	348.6	359.3	413.5	481.0	499.3
PELAGIC FISH								
Herring	392.5	569.7	416.5	130.1	122.3	126.3	125.7	121.2
Horse mackerel	68.7	162.7	191.3	224.7	44.5	58.2	49.5	44.2
Mackerel	90.3	94.7	79.2	95.7	102.5	110.2	100.6	105.6
Blue whiting	48.9	27.0	28.0	28.0	-	-	-	285.0
Sprats	51.4	72.1	79.3	71.2	80.9	98.9	117.6	101.8
Other pelagic	181.9	28.1	-	-	-	-	1,421.8	-
TOTAL	104.3	99.2	82.6	101.4	107.0	114.8	108.2	110.1
WET FISH	258.0	302.4	274.1	257.2	266.3	302.4	315.4	315.7
SHELL FISH								
Brown shrimps	1,093.4	1,344.1	1,103.3	1,482.7	1,493.8	1,327.6	1,810.8	1,923.0
Whelks	127.5	152.9	159.6	125.7	205.0	306.8	-	-
Periwinkles	212.3	234.3	263.6	272.7	291.2	320.3	341.0	366.3
Edible crabs	219.6	215.3	229.0	283.4	320.9	395.5	379.9	390.5
Lobsters	5,400.3	5,601.5	4,376.4	4,616.5	5,424.6	5,760.4	6,281.6	7,197.0
Oysters	863.3	-	-	-	1,400.0	1,250.0	-	-
Pink shrimps	708.2	900.9	948.7	865.1	807.7	957.9	775.4	916.5
Crawfish	..	5,076.4	4,950.0	5,580.8	5,323.7	4,908.4	5,819.2	6,711.7
Cockles	-	1,060.0	1,175.0	97.3	160.0	512.5	500.0	217.7
Scallops	648.0	595.7	618.1	589.2	638.5	739.4	923.5	1,072.4
Mussels	39.3	41.1	60.1	124.2	158.6	199.9	202.2	81.0
Norway lobsters	975.3	1,237.6	1,072.3	989.2	1,178.1	1,186.4	1,184.6	1,357.1
Squids	704.9	814.2	1,090.4	734.7	975.2	1,266.8	1,893.1	1,500.0
Queen scallops	195.4	221.7	223.7	227.5	223.9	255.6	283.6	293.0
Velvet crabs	1,068.3	1,244.7
Squat lobsters	2,050.0	-
Other shellfish	768.3	-	2,315.4	640.0	1,900.2	622.4	2,091.7	323.4
TOTAL	717.8	827.7	702.7	695.4	818.4	892.1	969.1	1,122.2
TOTAL OF ALL FISH	286.8	344.3	305.9	287.1	298.5	341.0	356.9	363.0

DISTRICT OF SCOTLAND: WEIGHT AND VALUE OF EACH SPECIES

	ALL DISTRICTS		EAST COAST					
			Eyemouth		Pittenweem		Arbroath	
DEMERSAL FISH	m.t.	£'000	m.t.	£'000	m.t.	£'000	m.t.	£'000
Blue ling	-	-	-	-	-	-	-	-
Brill	23	33.2	+	0.1	-	-	+	+
Catfish	1,028	549.8	33	15.0	2	0.9	9	4.9
Cod	58,624	43,920.8	2,252	1,776.3	529	309.0	1,009	689.7
Conger eels	135	36.7	-	-	-	-	-	-
Dabs	885	289.4	33	9.8	24	7.1	174	56.4
Dogfish	5,998	1,505.9	65	22.1	15	2.6	50	6.6
Dover sole	34	85.4	-	-	-	-	-	-
Flounders	16	2.3	-	-	-	-	-	-
Greenland halibut	-	-	-	-	-	-	-	-
Gurnards	49	11.5	-	-	-	-	-	-
Haddock	119,075	60,776.3	4,670	2,458.2	2,284	1,060.2	2,737	1,171.4
Hake	1,544	1,998.4	1	1.2	+	0.1	+	0.1
Halibut	92	312.7	1	4.0	+	0.4	1	1.3
Lemon sole	2,262	2,723.8	229	234.8	45	59.5	170	204.1
Ling	2,752	1,249.8	3	1.3	+	0.1	1	0.5
Lythe	579	351.6	1	0.8	+	0.1	+	0.1
Megrims	2,036	1,692.1	-	-	-	-	+	0.1
Monks	4,978	5,882.6	62	53.5	19	11.3	26	23.7
Norway pout	64	1.9	-	-	-	-	-	-
Plaice	5,428	3,260.4	245	156.3	66	33.8	264	109.6
Roundnose grenadier	1	0.2	-	-	-	-	-	-
Redfish	1	0.3	-	-	-	-	-	-
Saithe	12,155	3,221.1	79	20.3	13	2.3	13	3.0
Sandeels	35,809	1,107.4	-	-	-	-	-	-
Skate	3,504	1,217.3	1	0.2	5	0.9	87	27.5
Torsk	23	8.4	-	-	-	-	-	-
Turbot	161	550.0	3	11.4	+	1.5	3	7.7
Whiting	35,386	14,919.7	748	325.3	326	153.6	272	119.8
Witches	1,789	1,170.5	20	12.5	2	1.5	2	0.7
Livers	3	1.0	-	-	-	-	-	-
Roes	283	254.7	8	4.9	+	0.3	2	1.8
Other demersal	24	17.4	+	+	+	0.2	+	0.1
TOTAL	294,739	147,152.5	8,453	5,108.2	3,332	1,645.4	4,820	2,429.1
PELAGIC FISH								
Herring	86,862	10,526.7	-	-	1	0.2	-	-
Horse mackerel	2,381	105.2	-	-	-	-	-	-
Mackerel	170,910	18,042.1	-	-	1	0.1	-	-
Blue whiting	+	0.1	-	-	-	-	-	-
Sprats	2,946	299.9	-	-	-	-	-	-
Other pelagic	-	-	-	-	-	-	-	-
TOTAL	263,099	28,974.0	-	-	1	0.3	-	-
WET FISH	557,838	176,126.5	8,453	5,108.2	3,333	1,645.7	4,820	2,429.1
SHELL FISH								
Brown shrimps	14	27.1	-	-	-	-	-	-
Whelks	-	-	-	-	-	-	-	-
Periwinkles	2,035	745.5	323	102.5	185	53.3	-	-
Edible crabs	4,236	1,653.9	385	183.1	244	108.0	98	35.9
Lobsters	619	4,455.6	92	630.7	46	318.5	41	302.1
Oysters	-	-	-	-	-	-	-	-
Pink shrimps	1,347	1,234.2	-	-	-	-	-	-
Crawfish	20	134.2	-	-	-	-	-	-
Cockles	29	6.4	-	-	-	-	-	-
Scallops	4,220	4,525.8	-	-	-	-	-	-
Mussels	312	25.3	-	-	-	-	28	5.7
Norway lobsters	17,887	24,275.0	954	1,287.4	1,002	1,138.4	128	145.7
Squids	255	383.1	-	-	2	2.8	1	0.9
Queen scallops	3,315	971.3	-	-	-	-	-	-
Velvet crabs	430	535.2	-	-	-	-	-	-
Squat lobsters	-	-	-	-	-	-	-	-
Other shellfish	12	3.7	-	-	-	-	-	-
TOTAL	34,732	38,976.3	1,753	2,203.7	1,479	1,620.9	295	490.3
TOTAL OF ALL FISH	592,570	215,102.8	10,207	7,311.9	4,812	3,266.7	5,114	2,919.4

TABLE 6— continued

EAST COAST						
Aberdeen		Peterhead		Fraserburgh		
m.t.	£'000	m.t.	£'000	m.t.	£'000	DEMERSAL FISH
-	-	-	-	-	-	Blue ling
1	2.3	1	2.1	+	0.4	Brill
154	88.3	703	381.8	58	30.6	Catfish
9,527	7,529.1	28,904	21,700.8	2,342	1,771.3	Cod
1	0.2	+	+	+	0.1	Conger eels
131	46.4	87	27.8	58	18.2	Dabs
282	67.6	615	133.3	212	44.0	Dogfish
1	3.5	+	0.2	-	-	Dover sole
-	-	-	-	-	-	Flounders
-	-	-	-	-	-	Greenland halibut
16	4.2	-	+	+	0.1	Gurnards
23,981	12,511.4	51,586	25,804.1	5,425	2,365.1	Haddock
50	60.1	251	292.2	44	55.7	Hake
20	83.8	26	91.6	4	18.2	Halibut
583	827.6	735	875.1	204	237.2	Lemon sole
445	212.9	1,143	541.8	203	93.3	Ling
63	41.5	208	136.4	11	6.6	Lythe
174	129.5	376	318.4	130	106.4	Megrims
642	769.2	1,294	1,557.2	514	671.2	Monks
-	-	-	-	-	-	Norway pout
1,218	889.3	1,202	725.3	225	145.4	Plaice
-	-	1	0.2	-	-	Roundnose grenadier
+	0.2	-	-	-	-	Redfish
4,052	1,192.6	4,593	1,260.6	233	69.8	Saithe
-	-	+	+	-	-	Sandeels
410	149.1	282	79.6	109	25.8	Skate
12	4.2	5	2.2	1	0.2	Torsk
43	186.0	54	166.7	5	19.2	Turbot
3,893	1,797.8	12,091	5,266.1	2,337	843.8	Whiting
169	152.3	748.0	564.7	170	107.1	Witches
-	-	-	-	-	-	Livers
74	72.4	45	44.1	10	11.4	Roes
1	1.3	2	1.3	1	0.8	Other demersal
45,944	26,823.0	105,041	59,933.5	12,298	6,642.0	TOTAL
						PELAGIC FISH
2,796	314.3	3,415	374.4	16,050	1,578.0	Herring
-	-	-	-	-	-	Horse mackerel
499	29.3	16	2.2	11,171	1,240.2	Mackerel
-	-	-	-	+	0.1	Blue whiting
-	-	-	-	-	-	Sprats
-	-	-	-	-	-	Other pelagic
3,295	343.6	3,432	376.6	27,222	2,818.3	TOTAL
49,239	27,166.7	108,472	6,031.0	39,519	9,460.2	WET FISH
						SHELL FISH
-	-	-	-	-	-	Brown shrimps
-	-	-	-	-	-	Whelks
-	-	-	-	24	5.8	Periwinkles
28	11.0	57	23.1	204	88.8	Edible crabs
4	23.9	2	14.5	8	51.4	Lobsters
-	-	-	-	-	-	Oysters
-	-	726	655.6	245	220.4	Pink shrimps
-	-	-	-	-	-	Crawfish
-	-	-	-	-	-	Cockles
2	0.8	-	-	39	28.3	Scallops
-	-	-	-	-	-	Mussels
-	-	135	250.3	1,153	1,581.4	Norway lobsters
71	82.5	1	2.2	5	10.9	Squids
-	-	-	-	-	-	Queen scallops
-	-	-	-	-	-	Velvet crabs
-	-	-	-	-	-	Squat lobsters
1	0.2	-	-	-	-	Other shellfish
106	118.3	921	945.6	1,679	1,986.9	TOTAL
49,346	27,285.0	109,394	61,255.6	41,198	11,447.1	TOTAL OF ALL FISH

TABLE 6 — continued

	EAST COAST					
	Macduff		Buckie		Lossiemouth	
DEMERSAL FISH	m.t.	£'000	m.t.	£'000	m.t.	£'000
Blue ling	-	-	-	-	-	-
Brill	-	-	2	1.9	+	0.6
Catfish	8	3.5	10	4.5	1	0.5
Cod	476	382.8	347	241.8	55	44.7
Conger eels	-	-	+	+	-	-
Dabs	88	26.8	29	13.2	39	16.4
Dogfish	164	32.5	40	6.0	2	0.3
Dover sole	+	0.2	-	-	-	-
Flounders	-	-	-	-	-	-
Greenland halibut	-	-	-	-	-	-
Gurnards	-	-	-	-	-	-
Haddock	3,357	1,490.9	1,089	491.4	235	104.6
Hake	37	48.0	13	11.3	1	0.8
Halibut	1	2.7	2	6.2	+	1.6
Lemon sole	64	80.8	35	38.2	16	20.1
Ling	10	3.7	40	17.8	1	0.3
Lythe	-	-	2	1.3	-	-
Megrims	35	32.6	63	49.6	4	3.6
Monks	90	110.0	276	338.8	32	33.4
Norway pout	-	-	-	-	-	-
Plaice	231	143.4	233	142.5	111	70.2
Roundnose grenadier	-	-	-	-	-	-
Redfish	-	-	-	-	-	-
Saithe	14	4.0	24	4.7	-	-
Sandeels	-	-	-	-	-	-
Skate	50	14.5	50	11.7	14	3.4
Torsk	-	-	+	+	-	-
Turbot	1	1.0	2	6.5	+	1.1
Whiting	1,117	398.1	342	110.9	21	6.7
Witches	36	21.7	81	39.9	3	1.8
Livers	+	+	-	-	-	-
Roes	3	4.5	3	3.1	1	1.1
Other demersal	+	0.1	+	0.2	+	0.3
TOTAL	5,781	2,801.9	2,680	1,541.5	537	311.6
PELAGIC FISH						
Herring	-	-	-	-	-	-
Horse mackerel	-	-	-	-	-	-
Mackerel	-	-	-	-	-	-
Blue whiting	-	-	-	-	-	-
Sprats	-	-	-	-	-	-
Other pelagic	-	-	-	-	-	-
TOTAL	-	-	-	-	-	-
WET FISH	5,781	2,801.9	2,680	1,541.5	537	311.6
SHELL FISH						
Brown shrimps	-	-	-	-	-	-
Whelks	-	-	-	-	-	-
Periwinkles	-	-	-	-	4	1.5
Edible crabs	31	12.2	-	-	1	0.5
Lobsters	1	9.7	1	7.0	7	49.9
Oysters	-	-	-	-	-	-
Pink shrimps	-	-	375	358.2	-	-
Crawfish	-	-	-	-	-	-
Cockles	-	-	-	-	-	-
Scallops	-	-	349	309.7	-	-
Mussels	-	-	-	-	285	19.6
Norway lobsters	104	131.5	1,029	1,365.5	873	1,044.2
Squids	6	9.9	7	12.2	6	11.8
Queen scallops	-	-	-	-	-	-
Velvet crabs	-	-	-	-	-	-
Squat lobsters	-	-	-	-	-	-
Other shellfish	-	-	-	-	-	-
TOTAL	143	163.2	1,761	2,052.7	1,175	1,127.5
TOTAL OF ALL FISH	5,923	2,965.2	4,441	3,594.2	1,712	1,439.1

TABLE 6—continued

EAST COAST		ORKNEY AND SHETLAND				
Wick		Orkney		Shetland		
m.t.	£'000	m.t.	£'000	m.t.	£'000	DEMERSAL FISH
-	-	-	-	-	-	Blue ling
1	0.7	-	-	+	0.3	Brill
4	1.7	1	0.5	37	14.0	Catfish
1,282	990.5	360	235.8	4,159	2,640.6	Cod
-	-	-	-	+	0.2	Conger eels
50	16.6	1	0.3	1	0.1	Dabs
119	38.3	8	1.6	8	1.0	Dogfish
-	-	-	-	-	-	Dover sole
-	-	-	-	-	-	Flounders
-	-	-	-	-	-	Greenland halibut
+	+	1	0.1	+	+	Gurnards
3,533	1,635.2	1,193	580.4	4,103	2,503.1	Haddock
12	9.6	5	6.7	84	80.0	Hake
4	5.0	1	8.0	5	7.4	Halibut
33	29.6	2	2.2	12	10.0	Lemon sole
37	17.5	45	23.4	388	153.4	Ling
2	1.4	5	2.9	10	4.9	Lythe
52	39.4	30	21.3	330	290.5	Megrims
70	80.6	56	62.1	528	590.0	Monks
-	-	-	-	51	1.4	Norway pout
222	130.4	15	7.2	106	53.3	Plaice
-	-	-	-	-	-	Roundnose grenadier
-	-	-	-	+	+	Redfish
110	30.7	111	25.4	466	98.3	Saithe
-	-	-	-	17,223	528.1	Sandeels
325	121.5	45	14.0	242	48.2	Skate
1	0.2	-	-	1	0.2	Torsk
1	1.6	+	0.6	1	2.3	Turbot
205	74.6	377	158.3	4,797	2,288.0	Whiting
13	7.4	6	2.0	25	11.8	Witches
-	-	-	-	+	+	Livers
2	2.0	-	-	4	3.0	Roes
+	0.2	+	0.3	7	6.5	Other demersals
6,077	3,234.8	2,261	1,152.9	32,587	9,336.5	TOTAL
						PELAGIC FISH
26	4.2	-	-	31,938	3,804.0	Herring
-	-	-	-	1,109	49.9	Horse mackerel
288	24.3	-	-	2,710	226.6	Mackerel
-	-	-	-	-	-	Blue whiting
-	-	-	-	-	-	Sprats
-	-	-	-	-	-	Other pelagic
314	28.6	-	-	35,757	4,080.5	TOTAL
6,390	3,263.4	2,261	1,152.9	68,344	13,417.0	WET FISH
						SHELL FISH
-	-	-	-	-	-	Brown shrimps
-	-	-	-	-	-	Whelks
-	-	15	4.2	-	-	Periwinkles
515	204.2	774	232.2	265	95.9	Edible crabs
44	300.4	86	558.9	5	35.9	Lobsters
-	-	-	-	-	-	Oysters
-	-	-	-	-	-	Pink shrimps
-	-	-	-	-	-	Crawfish
-	-	-	-	+	+	Cockles
+	0.1	76	82.6	213	237.3	Scallops
-	-	-	-	-	-	Mussels
5	5.2	-	-	-	-	Norway lobsters
20	33.7	1	0.6	-	-	Squids
-	-	2	1.5	160	47.6	Queen scallops
-	-	-	-	-	-	Velvet crabs
-	-	-	-	-	-	Squat lobsters
-	-	-	-	-	-	Other shellfish
585	543.6	954	880.2	642	416.7	TOTAL
6,975	3,807.0	3,214	2,033.0	68,986	13,833.7	TOTAL OF ALL FISH

TABLE 6— continued

	WEST COAST							
	Stornoway		Kinlochbervie		Ullapool		Mallaig	
DEMERSAL FISH	m.t.	£'000	m.t.	£'000	m.t.	£'000	m.t.	£'000
Blue ling	—	—	—	—	—	—	—	—
Brill	1	1.4	1	1.8	1	1.1	1	1.0
Catfish	—	—	5	1.8	1	0.7	1	0.4
Cod	115	69.9	2,661	1,990.8	1,057	780.0	802	580.1
Conger eels	8	3.0	2	0.5	6	1.4	63	16.0
Dabs	5	1.6	53	16.7	59	19.7	2	0.9
Dogfish	494	4.8	825	218.6	787	200.6	992	319.4
Dover sole	—	—	—	—	1	1.1	1	1.5
Flounders	—	—	—	—	—	—	—	—
Greenland halibut	—	—	—	—	—	—	—	—
Gurnards	+	0.1	19	2.9	1	0.1	3	0.9
Haddock	176	81.4	9,543	5,328.3	1,889	1,190.6	2,102	1,290.5
Hake	47	47.4	68	78.4	100	97.4	161	192.3
Halibut	4	12.5	10	30.3	9	22.9	5	13.2
Lemon sole	29	22.4	22	17.5	24	16.7	20	14.2
Ling	18	11.5	236	103.3	76	29.3	64	22.0
Lythe	7	3.4	104	58.8	34	19.0	30	16.4
Megrims	80	53.7	169	148.9	230	200.8	309	265.3
Monks	130	126.2	307	382.8	364	418.4	448	544.0
Norway pout	13	0.4	—	—	—	—	—	—
Plaice	32	15.5	279	155.1	334	197.1	81	43.0
Roundnose grenadier	—	—	—	—	—	—	—	—
Redfish	—	—	—	—	—	—	+	+
Saithe	3	0.5	659	156.3	198	41.3	119	34.9
Sandeels	18,586	579.2	—	—	—	—	—	—
Skate	79	25.8	532	200.3	490	183.3	262	90.4
Torsk	—	—	2	0.6	+	0.1	1	0.2
Turbot	1	2.6	7	17.1	21	69.0	7	22.4
Whiting	197	58.7	3,439	1,488.2	1,007	430.1	1,212	430.7
Witches	71	23.9	11	6.5	90	39.1	218	120.3
Livers	—	—	—	—	—	—	1	0.4
Roes	1	0.5	31	27.6	9	8.0	9	10.2
Other demersals	—	—	1	0.3	—	—	—	—
TOTAL	20,097	1,146.5	18,984	10,433.4	6,786	3,967.7	6,911	4,030.6
PELAGIC FISH								
Herring	1,854	92.8	—	—	27,590	3,493.5	169	6.7
Horse mackerel	1,215	52.8	—	—	54	1.9	—	—
Mackerel	5,687	312.5	—	—	150,273	16,155.8	—	—
Blue whiting	—	—	—	—	—	—	—	—
Sprats	186	9.1	—	—	—	—	1,706	161.7
Other pelagic	—	—	—	—	—	—	—	—
TOTAL	8,942	467.2	—	—	177,916	19,651.2	1,875	168.5
WET FISH	29,039	1,613.7	18,984	10,433.4	184,702	23,618.8	8,786	4,199.1
SHELL FISH								
Brown shrimps	—	—	—	—	—	—	—	—
Whelks	—	—	—	—	—	—	—	—
Periwinkles	218	81.9	—	—	26	11.0	626	263.6
Edible crabs	1,210	483.9	1	0.3	110	39.9	189	75.4
Lobsters	170	1,322.7	14	103.0	6	47.0	15	119.9
Oysters	—	—	—	—	—	—	—	—
Pink shrimps	—	—	—	—	—	—	—	—
Crawfish	16	108.5	—	—	—	—	+	0.6
Cockles	29	6.4	—	—	—	—	—	—
Scallops	586	724.7	—	—	98	92.9	484	466.1
Mussels	—	—	—	—	—	—	—	—
Norway lobsters	1,722	2,206.1	66	124.0	1,947	2,709.3	3,328	5,135.3
Squids	1	1.9	53	88.2	12	18.8	26	43.1
Queen scallops	—	—	—	—	—	—	5	2.1
Velvet crabs	136	164.9	—	—	—	—	51	53.1
Squat lobsters	—	—	—	—	—	—	—	—
Other shellfish	6	1.9	—	—	—	—	—	—
TOTAL	4,095	5,102.9	134	315.4	2,200	2,918.9	4,725	6,159.2
TOTAL OF ALL FISH	33,134	6,716.6	19,118	10,748.9	186,902	26,537.8	13,510	10,358.3

TABLE 6—continued

WEST COAST						
Oban		Campbeltown		Ayr		
m.t.	£'000	m.t.	£'000	m.t.	£'000	DEMERSAL FISH
-	-	-	-	-	-	Blue ling
1	1.5	+	0.5	13	17.5	Brill
-	-	-	-	1	0.5	Catfish
76	54.6	240	143.5	2,435	1,989.6	Cod
4	0.9	1	0.3	51	14.1	Conger eels
2	0.8	1	0.2	48	10.5	Dabs
393	114.3	138	35.4	791	257.0	Dogfish
1	3.4	1	1.5	30	73.8	Dover sole
-	-	+	+	16	2.2	Flounders
-	-	-	-	-	-	Greenland halibut
1	0.2	-	-	8	2.9	Gurnards
530	329.8	27	14.4	617	365.3	Haddock
93	125.6	38	37.8	538	853.8	Hake
+	1.5	+	0.3	1	1.9	Halibut
18	14.8	2	1.9	20	16.7	Lemon sole
3	1.0	4	1.5	36	15.2	Ling
4	2.8	3	1.2	94	54.3	Lythe
38	24.5	1	0.4	15	7.0	Megrimms
35	38.8	12	8.1	72	63.4	Monks'
-	-	-	-	-	-	Norway pout
99	54.3	17	9.2	359	179.4	Plaice
-	-	-	-	-	-	Roundnose grenadier
-	-	-	-	-	-	Redfish
4	1.1	33	5.1	1,431	270.2	Saithe
-	-	-	-	-	-	Sandeels
209	89.0	46	13.8	266	118.2	Skate
-	-	-	-	1	0.4	Torsk
5	18.0	1	1.9	5	13.6	Turbot
633	235.2	388	125.8	1,984	648.1	Whiting
52	24.3	15	4.2	59	28.8	Witches
-	-	-	-	2	0.5	Livers
1	1.0	7	3.6	76	55.3	Roes
+	-	-	-	11	5.7	Other demersal
2,201	1,137.5	974	410.5	8,977	5,065.8	TOTAL
						PELAGIC FISH
21	3.8	930	283.4	2,072	571.3	Herring
-	-	-	-	4	0.7	Horse mackerel
-	-	75	11.3	191	39.9	Mackerel
-	-	-	-	+	+	Blue whiting
111	11.2	942	117.8	1	0.1	Sprats
-	-	-	-	-	-	Other pelagic
132	15.0	1,947	412.4	2,268	611.9	TOTAL
2,332	1,152.4	2,921	823.0	11,245	5,677.8	WET FISH
						SHELL FISH
-	-	-	-	14	27.1	Brown shrimps
-	-	-	-	-	-	Whelks
173	66.7	159	54.3	281	100.6	Periwinkles
11	5.7	84	42.2	29	11.6	Edible crabs
33	235.5	39	284.6	6	40.1	Lobsters
-	-	-	-	-	-	Oysters
-	-	-	-	-	-	Pink shrimps
2	11.7	2	13.4	-	-	Crawfish
-	-	-	-	-	-	Cockles
588	525.8	1,208	1,341.0	577	716.4	Scallops
-	-	-	-	-	-	Mussels
957	1,373.3	2,081	2,731.3	2,405	3,046.1	Norway lobsters
13	20.2	1	0.9	29	42.6	Squids
75	25.4	417	147.5	2,656	747.2	Queen scallops
98	128.2	141	185.6	4	3.3	Velvet crabs
-	-	-	-	-	-	Squat lobster
4	1.4	1	0.2	-	-	Other shellfish
1,955	2,394.0	4,133	4,801.1	6,000	4,735.1	TOTAL
4,287	3,546.5	7,054	5,624.6	17,244	10,412.9	TOTAL OF ALL FISH

LANDINGS IN SCOTLAND BY UNITED KINGDOM VESSELS
BY METHOD OF FISHING

TABLE 7

(a) Weight (tonnes)

Method of fishing	1981	1982	1983	1984	1985
Demersal trawl	74,570	83,952	84,453	75,168	71,243
Demersal pair trawl	35,368	33,711	35,446	44,910	74,763
Industrial trawl	53,812	63,529	50,079	46,873	35,892
Seine net	89,971	108,867	116,188	110,422	105,994
Lines	1,743	1,249	516	193	113
Beam trawl	-	-	-	644	829
Demersal gill nets	-	-	-	471	345
Other demersal nets	420	670	1,244	84	64
Purse seine	90,953	122,531	134,252	202,405	230,721
Pelagic trawl	61,665	50,230	39,128	23,464	32,213
Pelagic gill nets	12	33	14	67	30
Pelagic ring net	-	2	-	-	-
Nephrop trawl	16,816	15,792	18,026	19,245	21,963
Shrimp trawl	533	500	2,398	45	1,776
Queen scallop trawl	1,352	1,048	1,380	1,083	1,297
Scallop dredging	9,495	8,967	7,753	8,584	5,865
Creel fishing	3,973	4,441	5,348	6,797	6,596
Shellfishing by hand	3,313	2,665	2,896	2,859	2,866
Total	443,996	498,187	499,121	543,312	592,570

TABLE 7—continued

(b) Value (£'000)

Method of fishing	1981	1982	1983	1984	1985
Demersal trawl	31,676	35,997	39,813	40,887	41,671
Demersal pair trawl	15,996	16,507	18,023	25,499	39,778
Industrial trawl	1,576	1,897	1,541	1,599	1,113
Seine net	39,668	50,088	59,284	66,414	62,163
Lines	870	779	363	107	61
Beam trawl	—	—	—	587	731
Demersal gill nets	—	—	—	338	278
Other demersal nets	199	407	1,053	195	142
Purse seine	8,872	12,911	14,552	21,328	25,003
Pelagic trawl	6,571	5,557	5,342	3,085	3,963
Pelagic gill nets	+	14	9	22	7
Pelagic ring net	—	20	1	—	—
Nephrop trawl	11,781	13,436	16,095	17,646	23,040
Shrimp trawl	428	399	2,107	47	1,548
Queen scallop trawl	353	282	445	321	447
Scallop dredging	3,963	4,583	4,134	5,917	4,646
Creel fishing	4,439	4,955	6,297	8,607	9,234
Shellfishing by hand	1,094	894	1,156	1,321	1,277
Total	127,488	148,707	170,213	193,920	215,103

FISH LANDINGS IN SCOTLAND BY UNITED KINGDOM VESSELS

TABLE 8

EACH SPECIES BY METHOD OF FISHING

TONNES

	Demersal Trawl	Demersal Pair Trawl	Industrial Trawl	Seine Net	Lines	Beam Trawl	Demersal Gill Net	Other Demersal Nets	Purse Seine	Pelagic Trawl
DEMERSAL FISH										
Cod	14,358.7	19,494.6	3.4	23,107.6	85.5	30.5	319.8	0.3	-	-
Haddock	24,235.2	38,892.0	1.0	54,788.0	4.4	12.5	0.2	-	-	38.3
Plaice	1,859.3	744.2	-	2,012.0	-	577.6	13.6	1.1	-	-
Whiting	9,704.6	8,339.3	1.3	15,982.4	-	0.5	-	-	-	-
Saithe	5,946.5	3,821.6	-	2,093.2	0.4	0.5	5.1	-	-	-
Hake	636.5	134.0	-	557.8	-	0.1	0.1	-	-	-
Redfish	0.6	-	-	-	-	-	-	-	-	-
Brill	11.7	0.8	-	4.5	-	0.3	-	-	-	-
Catfish	170.8	265.3	-	567.4	-	3.3	0.1	-	-	-
Conger eels	114.7	0.9	-	1.9	-	-	-	-	-	-
Dabs	314.5	133.5	-	340.0	-	10.7	-	-	-	-
Dogfish	2,747.3	683.0	12.6	1,629.4	12.1	0.2	0.6	1.5	-	98.8
Sandeels	0.1	-	35,808.4	-	-	-	-	-	-	-
Flounders	6.3	-	-	1.8	-	-	-	-	-	-
Gurnards	34.7	10.0	-	2.7	-	0.1	-	-	-	-
Halibut	36.5	18.6	0.1	28.2	-	0.1	-	-	-	-
Lemon sole	900.0	502.4	-	719.4	-	46.0	-	-	-	-
Dover sole	9.9	-	-	2.4	-	1.2	-	-	-	-
Roundnose grenadier	0.6	-	-	-	-	-	-	-	-	-
Ling	1,560.7	524.6	0.4	577.5	-	0.2	3.4	-	-	-
Lythe	219.7	211.7	-	117.4	0.7	-	0.7	-	-	-
Megrim	1,181.0	72.3	0.2	602.3	-	1.3	-	-	-	-
Monks	2,962.5	249.3	0.5	1,082.7	-	80.5	0.1	-	-	-
Norway pout	-	-	63.6	-	-	-	-	-	-	-
Skate	1,965.1	469.0	0.3	664.9	0.4	47.7	0.1	42.3	-	-
Torsk	18.8	1.2	-	2.9	-	-	0.1	-	-	-
Turbot	72.2	23.6	-	47.0	-	12.1	0.1	-	-	-
Witches	448.3	76.6	-	913.7	-	0.6	-	-	-	-
Livers	2.4	0.1	-	-	-	-	-	-	-	-
Roes	156.4	45.4	-	78.6	-	-	1.0	-	-	-
Blue ling	-	-	-	-	-	-	-	-	-	-
Other demersal	9.1	2.7	-	8.2	-	-	-	1.1	-	-
Total	69,684.6	74,717.0	35,891.9	105,934.0	103.6	825.7	345.0	46.4	-	137.1
PELAGIC FISH										
Herring	180.9	1.9	-	0.4	-	-	-	-	59,908.4	26,686.8
Mackerel	2.7	1.5	-	1.2	9.8	-	-	-	169,703.8	1,174.9
Horse mackerel	1.3	-	-	0.7	-	-	-	-	1,108.6	1,268.8
Sprats	-	-	-	-	-	-	-	-	-	2,945.9
Other pelagic	-	-	-	-	-	-	-	-	-	-
Total	184.9	3.5	-	2.3	9.8	-	-	-	230,720.7	32,076.3
WET FISH	69,869.5	74,720.5	35,891.9	105,936.3	113.4	825.7	345.0	46.4	230,720.7	32,213.3
SHELL FISH										
Cockles	-	-	-	-	-	-	-	-	-	-
Edible crabs	4.0	-	-	1.9	-	-	-	0.3	-	-
Lobsters	-	-	-	-	-	-	-	0.1	-	-
Mussels	-	-	-	-	-	-	-	-	-	-
Norway lobsters	1,218.0	0.1	-	1.4	-	-	-	-	-	-
Oysters	-	-	-	-	-	-	-	-	-	-
Periwinkles	-	-	-	-	-	-	-	-	-	-
Queen scallops	4.6	-	-	-	-	-	-	-	-	-
Scallops	-	-	-	-	-	2.3	-	-	-	-
Pink shrimps	7.1	-	-	-	-	-	-	-	-	-
Squids	139.4	42.1	-	54.1	-	0.1	-	-	-	-
Whelks	-	-	-	-	-	-	-	-	-	-
Brown shrimps	-	-	-	-	-	-	-	-	-	-
Crawfish	-	-	-	-	-	-	-	17.5	-	-
Velvet crabs	-	-	-	-	-	-	-	-	-	-
Squat lobsters	-	-	-	-	-	-	-	-	-	-
Other shellfish	-	-	-	0.8	-	0.3	-	-	-	-
Total	1,373.3	42.1	-	58.1	-	2.8	-	17.9	-	-
Total of all fish	71,242.8	74,762.6	35,891.9	105,994.4	113.4	828.5	345.0	64.3	230,720.7	32,213.3

EACH SPECIES BY METHOD OF FISHING

TONNES

Pelagic Gill Nets	Nephrop Trawl	Shrimp Trawl	Queen Scallop Trawl	Scallop Dredge	Creel Fishing	Shell Fishing by Hand	All Methods	
								DEMERSAL FISH
-	1,069.4	141.5	11.3	1.6	-	-	58,624.1	Cod
-	1,051.9	51.6	-	-	-	-	119,075.2	Haddock
-	204.3	1.5	8.3	5.6	-	-	5,427.7	Plaice
-	1,307.8	48.8	1.0	-	-	-	35,385.8	Whiting
-	275.7	11.7	0.1	-	-	-	12,154.9	Saithe
-	214.7	0.6	-	-	-	-	1,543.8	Hake
-	-	-	-	-	-	-	0.6	Redfish
-	3.8	-	0.5	1.2	-	-	22.9	Brill
-	17.0	4.3	-	-	-	-	1,028.3	Catfish
-	17.7	-	-	-	-	-	135.3	Conger eels
-	81.7	1.6	2.8	-	-	-	884.7	Dabs
-	778.1	30.4	3.8	0.2	-	-	5,997.9	Dogfish
-	0.1	-	-	-	-	-	35,808.7	Sandeels
-	7.7	-	-	-	-	-	15.8	Flounders
-	1.7	-	-	-	-	-	49.1	Gurnards
-	7.9	1.0	-	-	-	-	92.5	Halibut
-	91.1	1.9	1.3	-	-	-	2,262.2	Lemon sole
-	1.8	-	5.1	13.7	-	-	34.1	Dover sole
-	-	-	-	-	-	-	0.6	Roundnose grenadier
-	68.9	16.2	-	-	-	-	2,751.8	Ling
-	25.2	0.1	3.6	-	-	-	578.9	Lythe
-	178.4	0.6	-	-	-	-	2,036.1	Megrims
-	502.6	82.9	1.4	15.8	-	-	4,978.2	Monks
-	-	-	-	-	-	-	63.6	Norway pout
-	304.3	1.4	4.4	3.8	-	-	3,503.7	Skate
-	-	-	-	-	-	-	23.1	Torsk
-	4.9	0.3	0.2	0.4	-	-	160.8	Turbot
-	337.8	12.0	0.2	-	-	-	1,789.3	Witches
-	-	-	-	-	-	-	2.6	Livers
-	1.8	-	-	-	-	-	283.2	Roes
-	-	-	-	-	-	-	-	Blue ling
-	2.6	-	-	-	-	-	23.8	Other demersal
-	6,558.9	408.4	44.0	42.4	-	-	294,739.1	Total
								PELAGIC FISH
30.2	53.3	-	-	-	-	-	86,861.8	Herring
-	15.7	-	-	-	-	-	170,909.6	Mackerel
-	1.7	-	-	-	-	-	2,381.1	Horse mackerel
-	-	-	-	-	-	-	2,945.9	Sprats
-	0.3	-	-	-	-	-	0.3	Other pelagic
30.2	71.0	-	-	-	-	-	263,098.7	Total
30.2	6,630.0	408.4	44.0	42.4	-	-	557,837.9	WET FISH
								SHELL FISH
-	-	-	-	-	-	29.3	29.3	Cockles
-	-	-	-	-	4,229.7	-	4,236.0	Edible crabs
-	-	-	-	-	616.7	2.3	619.1	Lobsters
-	-	4.8	-	-	-	307.2	312.0	Mussels
0.1	15,311.0	11.0	0.6	2.1	1,307.3	35.5	17,887.3	Norway lobsters
-	-	-	-	-	-	-	-	Oysters
-	-	-	-	-	-	2,035.0	2,035.0	Periwinkles
-	1.8	-	1,247.8	2,061.1	-	-	3,315.3	Queen scallops
-	-	-	3.1	3,759.5	-	455.5	4,220.5	Scallops
-	2.0	1,337.6	-	-	-	-	1,346.6	Pink shrimps
-	18.4	-	1.5	-	-	-	255.5	Squids
-	-	-	-	-	-	-	-	Whelks
-	-	14.2	-	-	-	-	14.2	Brown shrimps
-	-	-	-	-	1.7	0.8	20.0	Crawfish
-	-	-	-	-	430.1	-	430.1	Velvet crabs
-	-	-	-	-	-	-	-	Squat lobsters
-	-	-	-	-	10.5	-	11.6	Other shellfish
0.1	15,333.1	1,367.5	1,253.0	5,822.7	6,596.0	2,865.6	34,732.4	Total
30.3	21,963.1	1,775.9	1,297.0	5,865.2	6,596.0	2,865.6	592,570.3	Total of all fish

FISH LANDINGS IN SCOTLAND BY UNITED KINGDOM VESSELS

TABLE 8 - continued

EACH SPECIES BY METHOD OF FISHING

£'000

	Demersal Trawl	Demersal Pair Trawl	Industrial Trawl	Seine Net	Lines	Beam Trawl	Demersal Gill Net	Other Demersal Nets	Purse Seine	Pelagic Trawl
DEMERSAL FISH										
Cod	10,984.7	14,245.0	1.5	17,589.0	52.5	22.1	257.1	0.2	-	-
Haddock	12,440.6	18,310.7	0.5	29,672.8	2.4	4.6	+	-	-	1.5
Plaice	1,043.8	417.8	-	1,206.6	-	462.3	15.7	0.8	-	-
Whiting	3,901.2	3,567.3	0.6	7,089.4	-	0.2	-	-	-	-
Saithe	1,575.6	975.4	-	627.3	+	0.4	1.2	-	-	-
Hake	894.7	157.1	-	720.9	-	+	0.1	-	-	-
Redfish	0.3	-	-	-	-	-	-	-	-	-
Brill	17.6	1.3	-	7.8	-	0.5	-	-	-	-
Catfish	93.9	125.2	-	318.3	-	1.9	+	-	-	-
Conger eels	30.1	0.2	-	0.6	-	-	-	-	-	-
Dabs	105.3	44.2	-	107.5	-	3.7	-	-	-	-
Dogfish	773.2	1,172.9	+	429.7	3.6	+	0.1	0.2	-	28.1
Sandeels	+	-	1,107.3	-	-	-	-	-	-	-
Flounders	1.0	-	-	0.1	-	-	-	-	-	-
Gurnards	8.3	1.6	-	1.0	-	+	-	-	-	-
Halibut	126.2	60.4	0.3	95.6	-	+	-	-	-	-
Lemon sole	1,129.4	593.2	-	851.8	-	65.0	-	-	-	-
Dover sole	26.5	-	-	6.8	-	3.4	-	-	-	-
Roundnose grenadier	0.2	-	-	-	-	-	-	-	-	-
Ling	710.3	236.0	0.2	262.5	-	0.1	1.8	-	-	-
Lythe	134.3	129.9	-	75.9	0.2	-	0.3	-	-	-
Megrimms	987.8	55.0	0.2	542.0	-	0.6	-	-	-	-
Monks	3,529.1	289.1	0.5	1,286.7	-	92.7	+	-	-	-
Norway pout	-	-	1.9	-	-	-	-	-	-	-
Skate	685.7	161.2	0.1	238.4	+	14.5	+	21.5	-	-
Torsk	6.4	0.7	-	1.4	-	-	+	-	-	-
Turbot	258.5	67.7	-	150.6	-	57.6	0.2	-	-	-
Witches	259.9	48.8	-	705.7	-	0.4	-	-	-	-
Livers	1.0	+	-	-	-	-	-	-	-	-
Roes	139.5	39.3	-	73.1	-	-	1.4	-	-	-
Blue ling	-	-	-	-	-	-	-	-	-	-
Other demersal	7.3	2.0	-	5.8	-	+	-	1.2	-	-
Total	39,872.4	39,701.8	1,113.2	62,067.3	58.9	730.2	278.1	24.0	-	29.6
PELAGIC FISH										
Herring	10.7	0.5	-	0.1	-	-	-	-	7,064.8	3,432.4
Mackerel	0.5	0.2	-	0.4	2.3	-	-	-	17,888.3	146.5
Horse mackerel	0.2	-	-	0.2	-	-	-	-	49.9	54.6
Sprats	-	-	-	-	-	-	-	-	-	299.9
Other pelagic	-	-	-	-	-	-	-	-	-	-
Total	11.5	0.7	-	0.7	2.3	-	-	-	25,002.9	3,933.4
WET FISH	39,883.9	39,702.5	1,113.2	62,068.0	61.2	730.2	278.1	24.0	25,002.9	3,963.0
SHELL FISH										
Cockles	-	-	-	-	-	-	-	-	-	-
Edible crabs	0.6	-	-	0.2	-	-	-	0.2	-	-
Lobsters	-	-	-	-	-	-	-	0.8	-	-
Mussels	-	-	-	-	-	-	-	-	-	-
Norway lobsters	1,591.7	0.1	-	1.6	-	-	-	-	-	-
Oysters	-	-	-	-	-	-	-	-	-	-
Periwinkles	-	-	-	-	-	-	-	-	-	-
Queen scallops	1.1	-	-	-	-	-	-	-	-	-
Scallops	-	-	-	-	-	0.8	-	-	-	-
Pink shrimps	6.5	-	-	-	-	-	-	-	-	-
Squids	187.4	74.9	-	92.8	-	+	-	-	-	-
Whelks	-	-	-	-	-	-	-	-	-	-
Brown shrimps	-	-	-	-	-	-	-	-	-	-
Crawfish	-	-	-	-	-	-	-	117.4	-	-
Velvet crabs	-	-	-	-	-	-	-	-	-	-
Squat lobsters	-	-	-	-	-	-	-	-	-	-
Other shellfish	-	-	-	0.1	-	+	-	-	-	-
Total	1,787.4	75.0	-	94.8	-	0.9	-	118.3	-	-
Total of all fish	41,671.3	39,777.5	1,113.2	62,162.7	61.2	731.1	278.1	142.3	25,002.9	3,963.0

EACH SPECIES BY METHOD OF FISHING

£'000

Pelagic Gill Nets	Nephrop Trawl	Shrimp Trawl	Queen Scallop Trawl	Scallop Dredge	Creel Fishing	Shell Fishing by Hand	All Methods	
								DEMERSAL FISH
-	669.5	92.9	5.8	0.6	-	-	43,920.8	Cod
-	317.4	25.8	-	-	-	-	60,776.3	Haddock
-	106.3	0.8	3.7	2.5	-	-	3,260.4	Plaice
-	344.6	16.1	0.3	-	-	-	14,919.7	Whiting
-	37.5	3.7	+	-	-	-	3,221.1	Saithe
-	225.0	10.6	-	-	-	-	1,998.4	Hake
-	-	-	-	-	-	-	0.3	Redfish
-	4.7	-	0.6	0.8	-	-	33.2	Brill
-	8.5	1.9	-	-	-	-	549.8	Catfish
-	5.7	-	-	-	-	-	36.7	Conger eels
-	27.3	0.6	0.7	-	-	-	289.4	Dabs
-	89.3	7.7	1.0	0.1	-	-	1,505.9	Dogfish
-	-	-	-	-	-	-	1,107.4	Sandeels
-	1.3	-	-	-	-	-	2.3	Flounders
-	0.6	-	-	-	-	-	11.5	Gurnards
-	25.8	4.3	-	-	-	-	312.7	Halibut
-	81.2	2.3	0.9	-	-	-	2,723.8	Lemon sole
-	4.6	-	13.6	30.5	-	-	85.4	Dover sole
-	-	-	-	-	-	-	0.2	Roundnose grenadier
-	32.5	6.4	-	-	-	-	1,249.8	Ling
-	9.9	+	1.1	-	-	-	351.6	Lythe
-	106.2	0.4	-	-	-	-	1,692.1	Megrims
-	574.2	102.7	1.1	6.4	-	-	5,882.6	Monks
-	-	-	-	-	-	-	1.9	Norway pout
-	93.1	0.3	1.3	1.0	-	-	1,217.3	Skate
-	-	-	-	-	-	-	8.4	Torsk
-	13.3	1.2	0.4	0.5	-	-	550.0	Turbot
-	151.3	4.3	+	-	-	-	1,170.5	Witches
-	-	-	-	-	-	-	1.0	Livers
-	1.3	-	-	-	-	-	254.7	Roes
-	-	-	-	-	-	-	-	Blue ling
-	1.1	-	-	-	-	-	17.4	Other demersal
-	2,932.2	272.0	30.6	42.2	-	-	147,152.5	Total
								PELAGIC FISH
6.9	11.3	-	-	-	-	-	10,526.7	Herring
-	3.9	-	-	-	-	-	18,042.1	Mackerel
-	0.3	-	-	-	-	-	105.2	Horse mackerel
-	-	-	-	-	-	-	299.9	Sprats
-	0.1	-	-	-	-	-	0.1	Other pelagic
6.9	15.5	-	-	-	-	-	28,974.0	Total
6.9	2,947.7	272.0	30.6	42.2	-	-	176,126.5	WET FISH
								SHELL FISH
-	-	-	-	-	-	6.4	6.4	Cockles
-	-	-	-	-	1,652.9	-	1,653.9	Edible crabs
-	-	-	-	-	4,439.9	15.0	4,455.6	Lobsters
-	-	1.0	-	-	-	24.3	25.3	Mussels
0.2	20,063.9	21.9	1.5	0.6	2,590.0	3.5	24,275.0	Norway lobsters
-	-	-	-	-	-	-	-	Oysters
-	-	-	-	-	-	745.5	745.5	Periwinkles
-	0.5	-	410.5	559.3	-	-	971.3	Queen scallops
-	-	-	3.0	4,044.1	-	477.9	4,525.8	Scallops
-	1.8	1,225.9	-	-	-	-	1,234.2	Pink shrimps
-	26.4	-	1.5	-	-	-	383.1	Squids
-	-	-	-	-	-	-	-	Whelks
-	-	27.1	-	-	-	-	27.1	Brown shrimps
-	-	-	-	-	12.0	4.9	134.2	Crawfish
-	-	-	-	-	535.2	-	535.2	Velvet crabs
-	-	-	-	-	-	-	-	Squat lobsters
-	-	-	-	-	3.5	-	3.7	Other shellfish
0.2	20,092.6	1,275.8	416.5	4,604.0	9,233.5	1,277.3	38,976.3	Total
7.1	23,040.4	1,547.8	447.1	4,646.3	9,233.5	1,277.3	215,102.8	Total of all fish

FISH LANDINGS IN SCOTLAND BY UNITED KINGDOM VESSELS
EACH DISTRICT BY METHOD OF FISHING AND FISHING EFFORT

TABLE 9
TONNES

	Demersal Trawl	Demersal Pair Trawl	Industrial Trawl	Seine Net	Lines	Beam Trawl	Demersal Gill Net	Other Demersal Nets	Purse Seine	Pelagic Trawl
Arrivals	22,564	9,435	1,111	15,333	486	158	1,484	791	1,863	2,366
Hours fishing	494,987	298,563	9,975	410,917	2,105	8,788	8,301	7,295	9,351	9,369
Days absent	42,457	27,386	1,286	45,661	502	587	1,536	1,058	4,780	3,700
District										
Eyemouth	1,768.9	3,734.9	-	2,881.4	-	-	-	-	-	-
Pittenweem	211.8	2,500.2	-	448.5	-	3.1	1.0	0.4	-	-
Arbroath	1,273.0	2,550.4	-	812.6	62.6	22.4	51.9	0.3	-	-
Aberdeen	18,580.4	7,285.0	-	19,383.7	20.8	777.4	140.3	-	1,913.4	1,212.9
Peterhead	8,278.1	36,247.6	-	60,044.3	5.6	8.5	49.0	-	203.7	3,226.3
Fraserburgh	5,844.9	2,282.6	-	3,230.1	4.8	1.3	83.0	-	22,287.5	4,968.1
Macduff	272.3	1,770.4	-	3,714.7	-	-	0.4	-	-	-
Buckie	1,259.0	120.8	-	825.2	-	15.7	-	-	-	-
Lossiemouth	207.8	-	-	228.7	-	-	-	-	-	-
Wick	900.6	2,444.0	-	2,733.3	-	-	18.9	-	287.7	1.0
Orkney	2,255.1	-	-	6.2	-	-	-	-	-	-
Shetland	8,365.4	672.5	17,280.9	6,264.3	-	0.1	-	-	34,481.5	1,274.9
Stormoway	526.1	0.8	18,611.1	-	1.8	-	-	16.1	6,752.8	2,183.2
Kinlochbervie	4,457.4	12,825.0	-	1,754.5	-	-	-	-	-	-
Ullapool	4,167.1	1,831.7	-	353.7	-	-	-	-	164,706.4	13,209.6
Mallaig	5,503.7	337.6	-	502.8	-	-	0.5	0.1	87.7	1,786.9
Oban	513.9	137.8	-	1,406.6	-	-	-	1.3	-	131.9
Campbeltown	326.6	14.7	-	226.8	12.4	-	-	9.8	-	1,947.2
Ayr	6,530.7	6.3	-	1,177.0	5.4	-	-	36.4	-	2,271.4
ALL DISTRICTS	71,242.8	74,762.6	35,891.9	105,994.4	113.4	828.5	345.0	64.3	230,720.7	32,213.3

FISH LANDINGS IN SCOTLAND BY UNITED KINGDOM VESSELS
EACH DISTRICT BY METHOD OF FISHING

TABLE 9 - continued
£'000

	Demersal Trawl	Demersal Pair Trawl	Industrial Trawl	Seine Net	Lines	Beam Trawl	Demersal Gill Net	Other Demersal Nets	Purse Seine	Pelagic Trawl
Eyemouth	1,172.3	2,184.7	-	1,750.3	-	-	-	-	-	-
Pittenweem	118.4	1,215.7	-	230.5	-	1.7	0.6	0.9	-	-
Arbroath	737.2	1,230.4	-	347.1	38.8	19.4	37.1	0.2	-	-
Aberdeen	10,226.1	3,858.6	-	12,008.1	10.7	690.7	120.4	-	197.4	138.2
Peterhead	4,740.7	18,845.8	-	36,059.5	4.4	4.1	44.1	-	23.4	353.0
Fraserburgh	3,597.7	1,126.0	-	1,558.9	1.9	0.9	63.4	-	2,447.5	371.0
Macduff	202.9	818.5	-	1,786.1	-	-	0.3	-	-	-
Buckie	927.9	57.3	-	402.1	-	14.2	-	-	-	-
Lossiemouth	162.7	-	-	125.3	-	-	-	-	-	-
Wick	483.6	1,484.2	-	1,288.8	-	-	11.8	-	24.3	0.2
Orkney	1,150.8	-	-	2.7	-	-	-	-	-	-
Shetland	4,820.9	366.4	533.1	3,614.1	-	0.2	-	-	3,946.1	134.4
Stormoway	258.3	0.5	580.1	-	0.5	-	-	108.5	357.9	106.3
Kinlochbervie	2,471.6	7,115.5	-	934.5	-	-	-	-	-	-
Ullapool	2,487.5	1,137.6	-	225.2	-	-	-	-	18,004.0	1,647.1
Mallaig	3,654.1	224.6	-	262.0	-	-	0.2	0.6	2.4	166.1
Oban	273.8	96.5	-	757.5	-	-	-	8.3	-	15.0
Campbeltown	153.5	10.1	-	113.0	3.0	-	-	4.8	-	412.6
Ayr	4,031.2	5.2	-	696.9	1.8	-	-	19.0	-	619.1
ALL DISTRICTS	41,671.3	39,777.5	1,113.2	62,162.7	61.2	731.1	278.1	142.3	25,002.9	3,963.0

FISH LANDINGS IN SCOTLAND BY UNITED KINGDOM VESSELS

TABLE 9 - continued

EACH DISTRICT BY METHOD OF FISHING AND FISHING EFFORT

TONNES

Pelagic Gill Nets	Nephrop Trawl	Shrimp Trawl	Queen Scallop Trawl	Scallop Dredge	Creel Fishing	Shell Fishing by Hand	All Methods	
37	44,978	470	1,692	5,406	79,703	242	188,119	Arrivals
73	542,876	16,135	9,204	75,402	632,634	3,197	2,539,173	Hours fishing
37	53,578	1,477	1,906	8,325	87,742	183	282,201	Days absent
								District
0.2	1,021.9	-	-	-	476.1	323.2	10,206.6	Eyemouth
-	1,172.0	-	-	-	289.6	185.2	4,811.8	Pittenweem
-	174.4	4.8	-	-	139.2	22.7	5,114.3	Arbroath
-	-	-	-	-	31.6	-	49,345.6	Aberdeen
-	304.1	967.3	-	-	59.3	-	109,393.7	Peterhead
-	1,897.8	322.5	-	39.2	209.1	26.8	41,197.5	Fraserburgh
-	132.9	-	-	-	32.8	-	5,923.4	Macduff
-	1,403.5	467.2	-	348.6	1.0	-	4,441.2	Buckie
-	979.5	-	-	-	8.3	288.0	1,712.3	Lossiemouth
25.0	5.1	-	-	-	559.2	0.1	6,974.9	Wick
-	-	-	-	6.5	859.9	86.6	3,214.3	Orkney
-	-	-	160.6	216.2	269.5	0.1	68,985.9	Shetland
5.2	2,487.2	-	-	490.5	1,715.8	343.0	33,133.5	Stornoway
-	-	-	-	-	80.7	-	19,117.6	Kinlochbervie
-	2,042.9	-	-	71.4	463.9	55.4	186,902.1	Ullapool
-	3,511.6	-	5.1	360.8	664.8	748.8	13,510.4	Mallaig
-	896.5	-	75.0	481.0	362.2	280.9	4,286.9	Oban
-	2,355.6	-	410.1	1,192.8	334.1	223.7	7,053.8	Campbeltown
-	3,578.2	14.2	646.2	2,658.3	39.0	281.3	17,244.4	Ayr
30.3	21,963.1	1,775.9	1,297.0	5,865.2	6,596.0	2,865.6	592,570.2	ALL DISTRICTS

FISH LANDINGS IN SCOTLAND BY UNITED KINGDOM VESSELS

TABLE 9 - continued

EACH DISTRICT BY METHOD OF FISHING

£'000

Pelagic Gill Nets	Nephrop Trawl	Shrimp Trawl	Queen Scallop Trawl	Scallop Dredge	Creel Fishing	Shell Fishing by Hand	All Methods	
0.2	1,288.1	-	-	-	813.8	102.5	7,311.9	Eyemouth
-	1,219.9	-	-	-	425.5	53.3	3,266.7	Pittenweem
-	165.6	1.0	-	-	338.0	4.7	2,919.4	Arbroath
-	-	-	-	-	34.8	-	27,285.0	Aberdeen
-	320.4	822.5	-	-	37.5	-	61,255.6	Peterhead
-	1,830.4	275.1	-	28.3	125.2	20.8	11,447.1	Fraserburgh
-	135.4	-	-	-	21.9	-	2,965.2	Macduff
-	1,454.0	422.0	-	309.7	7.0	-	3,594.2	Buckie
-	1,079.6	-	-	-	50.5	21.1	1,439.1	Lossiemouth
4.1	5.3	-	-	-	504.6	0.1	3,807.0	Wick
-	-	-	-	6.0	791.2	82.3	2,033.0	Orkney
-	-	-	47.9	238.9	131.7	+	13,833.7	Shetland
2.8	2,211.1	-	-	606.7	2,277.6	206.2	6,716.6	Stornoway
-	-	-	-	-	227.2	-	10,748.9	Kinlochbervie
-	2,222.9	-	-	65.5	708.9	39.0	26,537.7	Ullapool
-	4,114.3	-	2.1	334.2	1,202.2	395.5	10,358.3	Mallaig
-	960.2	-	25.4	436.2	816.7	157.0	3,546.5	Oban
-	2,709.3	-	146.6	1,313.2	663.7	94.2	5,624.0	Campbeltown
-	3,323.8	27.1	225.1	1,307.4	55.5	100.6	10,412.9	Ayr
7.1	23,040.4	1,547.8	447.1	4,646.3	9,233.5	1,277.3	215,102.8	ALL DISTRICTS

MAJOR SPECIES BY MONTH

	tonnes					£'000				
	1981	1982	1983	1984	1985	1981	1982	1983	1984	1985
COD										
January	3,283	4,321	2,951	2,517	3,551	1,950	2,491	2,342	2,067	2,594
February	2,537	3,816	4,316	4,211	3,675	1,279	2,365	2,722	2,710	2,778
March	4,598	4,047	5,179	5,160	4,175	2,136	2,462	3,117	3,094	3,108
April	5,553	4,954	5,553	4,780	4,624	2,970	3,117	3,585	3,457	3,838
May	6,210	6,171	7,449	6,986	7,873	2,998	3,918	4,485	4,610	5,640
June	6,427	6,144	7,313	6,879	7,771	3,165	3,715	4,418	4,826	5,669
July	5,273	4,998	5,396	5,163	5,787	2,752	3,223	3,148	3,676	3,987
August	4,371	3,856	5,070	4,308	4,886	2,411	2,887	3,392	3,071	3,613
September	4,449	4,352	3,727	3,511	4,945	2,642	2,987	2,804	2,630	3,510
October	4,145	3,696	2,925	4,048	4,887	2,794	2,629	2,440	3,022	3,698
November	3,418	4,461	4,029	3,460	3,494	2,366	3,049	3,099	2,700	2,968
December	3,804	4,082	2,490	2,901	2,956	2,544	2,651	2,261	2,290	2,517
HADDOCK										
January	5,985	8,981	4,840	7,173	6,622	2,543	2,977	3,013	4,425	4,778
February	3,056	9,278	10,603	9,648	7,374	1,644	3,832	4,319	4,861	5,282
March	6,249	8,239	10,696	10,737	7,177	2,584	3,555	4,721	5,232	5,279
April	6,610	9,250	9,664	8,253	6,775	2,872	3,639	4,045	4,552	4,576
May	6,293	7,462	7,868	7,820	8,330	2,764	3,589	3,738	4,452	4,650
June	6,112	9,107	8,683	6,555	6,468	2,758	3,981	4,276	4,371	3,776
July	8,514	11,387	9,754	7,949	11,465	2,655	3,445	3,734	4,809	5,239
August	8,543	11,208	11,904	9,095	13,171	2,475	3,664	4,895	5,636	5,719
September	9,022	11,575	10,802	8,110	16,201	2,856	3,802	4,961	5,176	5,848
October	8,843	9,755	7,935	6,685	14,208	3,255	3,887	4,433	5,494	6,132
November	7,557	8,507	9,429	6,809	11,691	3,097	3,827	4,851	4,866	5,596
December	7,597	7,821	6,352	4,905	9,595	2,545	3,205	3,943	3,577	3,901
SAITHE										
January	337	766	393	284	798	112	216	150	92	186
February	503	937	1,260	1,144	1,489	144	271	328	235	340
March	1,371	980	1,134	993	1,461	332	281	296	180	377
April	1,015	720	828	845	1,243	254	239	220	202	390
May	832	709	826	1,057	1,817	209	231	205	219	484
June	784	902	752	1,433	2,038	209	269	190	274	463
July	596	972	498	838	993	117	213	106	143	220
August	476	962	463	538	397	102	218	121	100	113
September	692	712	602	547	336	189	172	193	148	96
October	605	288	225	728	805	204	108	102	212	255
November	442	332	228	396	484	144	116	91	128	184
December	471	385	352	332	293	169	119	113	98	112
WHITING										
January	2,903	1,467	2,280	2,826	4,298	939	412	1,017	1,288	1,622
February	1,410	1,480	3,566	4,172	4,339	551	524	1,121	1,429	1,809
March	3,160	1,948	4,249	5,566	3,950	951	690	1,399	1,795	1,894
April	3,128	2,124	3,503	3,847	2,488	1,151	652	1,152	1,589	1,500
May	2,314	1,726	2,699	3,445	2,385	900	737	962	1,463	1,212
June	3,066	2,922	3,996	3,467	2,422	1,055	1,007	1,251	1,698	1,225
July	3,576	3,372	3,394	3,929	2,636	912	771	824	1,455	1,048
August	3,303	3,486	4,733	5,244	2,392	895	908	1,189	2,056	927
September	3,793	4,071	4,952	4,578	2,603	985	1,015	1,369	1,835	875
October	3,187	3,596	3,598	4,347	3,158	906	976	1,393	1,816	1,142
November	2,883	4,413	5,357	4,118	2,507	865	1,217	1,574	1,813	942
December	2,838	3,412	3,159	2,943	2,209	733	957	1,341	1,360	725
HERRING										
January	8	473	590	1,310	5,560	3	86	71	116	670
February	15	212	975	5,136	7,080	7	38	137	553	819
March	16	7	566	1,968	5,361	7	3	77	197	683
April	32	24	1	-	-	13	8	+	-	-
May	25	615	2	556	527	13	203	1	158	133
June	499	854	3,583	4,006	1,752	234	360	720	703	339
July	2,060	5,846	8,904	8,112	9,388	459	914	1,309	1,210	1,447
August	7,997	12,003	15,297	20,247	31,793	732	1,734	1,887	2,374	3,702
September	930	899	4,309	22,429	12,225	176	104	630	2,723	1,381
October	2,977	1,400	2,008	2,318	6,310	342	109	344	264	797
November	8,974	6,176	7,639	70	2,188	1,112	305	783	9	271
December	9,063	13,072	7,513	1,676	4,677	1,141	1,219	531	215	284
MACKEREL										
January	1	-	2	7,595	22,803	-	-	1	655	2,369
February	2	-	13	4,780	5,075	-	-	4	471	532
March	695	-	6	5,041	1,149	29	-	2	463	119
April	4	-	5	-	-	1	-	2	-	-
May	9	2	1	3	2	2	1	+	1	1
June	29	76	23	2	99	6	9	5	1	20
July	3,564	512	198	127	88	277	33	20	15	10
August	18,380	37	1,252	175	52	1,673	4	165	13	14
September	42,569	35,047	33,540	2,177	7,419	4,087	3,979	3,936	252	794
October	48,439	48,428	37,565	32,930	41,387	4,799	5,298	4,166	3,456	4,688
November	232	42,811	33,426	64,354	57,867	30	3,705	3,049	6,491	6,225
December	708	3,085	13,985	37,825	34,969	66	292	1,873	3,776	3,270

MAJOR SPECIES BY MONTH

		£ per tonne									
		1981	1982	1983	1984	1985	1981	1982	1983	1984	1985
COD						WHITING					
January	594	576	794	821	731	January	324	281	446	456	377
February	504	620	631	644	756	February	391	354	314	343	417
March	465	608	602	600	744	March	242	354	329	322	480
April	535	629	646	723	830	April	368	307	329	413	603
May	483	635	602	660	716	May	389	427	357	425	508
June	492	605	604	702	730	June	344	345	313	490	506
July	522	645	583	712	689	July	255	229	243	370	398
August	552	749	669	713	740	August	271	260	251	392	388
September	594	686	752	749	710	September	260	249	277	401	336
October	674	711	834	747	757	October	284	271	387	418	361
November	692	683	769	780	850	November	300	276	294	440	376
December	669	649	908	789	852	December	258	280	425	462	328
HADDOCK						HERRING					
January	425	331	623	617	722	January	399	182	121	89	121
February	538	413	406	504	716	February	468	179	140	108	116
March	413	431	441	487	736	March	427	429	136	100	127
April	435	393	419	552	675	April	404	333	384	-	-
May	439	481	480	569	558	May	513	330	498	284	252
June	451	437	496	667	584	June	470	422	201	175	194
July	312	303	383	605	457	July	223	156	147	149	154
August	290	327	411	620	434	August	92	144	123	117	116
September	317	328	460	638	361	September	190	116	146	121	113
October	368	398	559	633	432	October	115	78	171	114	126
November	410	450	515	715	479	November	124	49	103	129	124
December	335	410	624	729	407	December	126	93	71	128	61
SAITHE						MACKEREL					
January	333	282	381	324	233	January	220	-	552	86	104
February	287	289	260	205	229	February	122	-	336	99	105
March	242	287	261	181	258	March	42	-	395	92	104
April	250	332	266	239	314	April	269	-	423	-	-
May	252	326	248	207	266	May	231	500	478	333	284
June	267	298	253	191	227	June	212	118	205	500	200
July	197	219	213	171	221	July	78	64	99	118	118
August	214	227	262	186	286	August	91	108	132	74	277
September	274	242	321	272	287	September	96	114	117	116	107
October	337	375	453	291	317	October	99	109	111	105	113
November	326	349	401	323	380	November	129	87	91	101	108
December	358	309	322	295	380	December	94	95	134	100	94

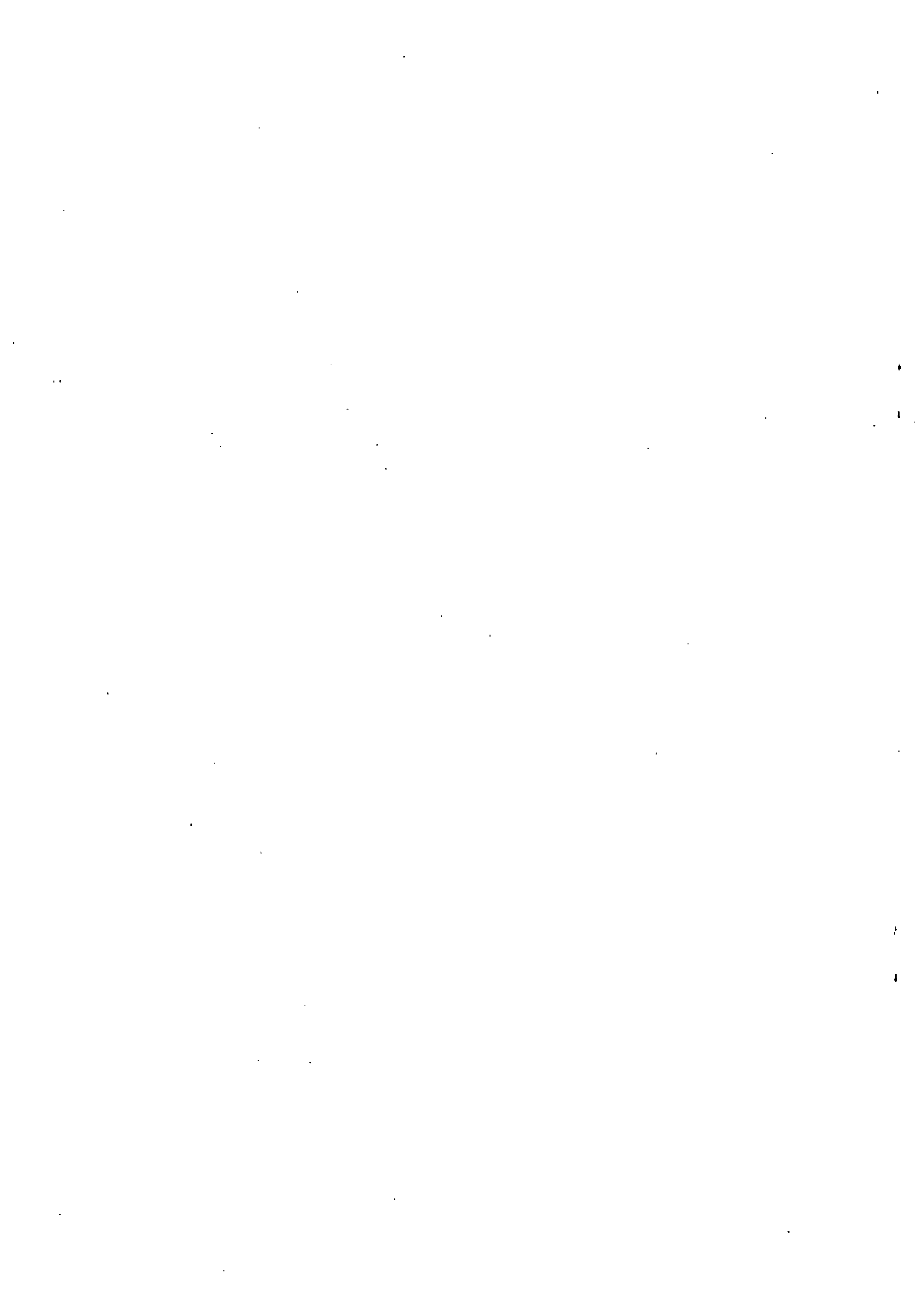
LANDINGS IN SCOTLAND BY UNITED KINGDOM VESSELS

TABLE 11

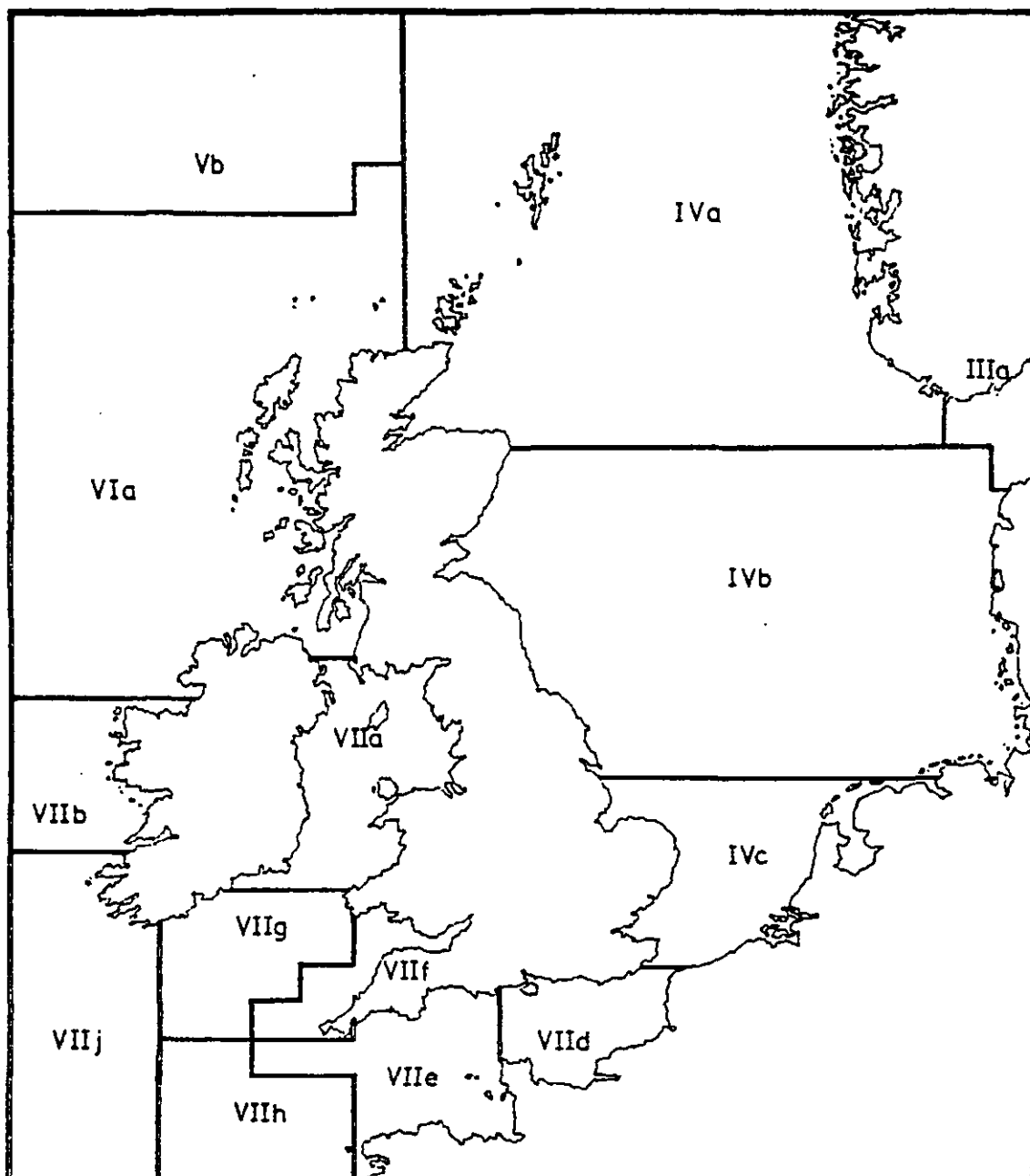
VALUE OF LANDINGS PER MONTH BY MAJOR FISHING METHODS

£'000

	Demersal trawl 80' +	Demersal trawl 80' -	Seine Net	Pelagic Pair Trawl	All Methods
January	550	4,413	6,063	310	16,017
February	669	4,901	6,633	208	15,669
March	820	6,176	5,480	86	16,024
April	957	6,576	5,132	-	15,290
May	1,194	8,000	5,370	136	17,515
June	1,021	8,822	3,342	235	17,517
July	1,039	8,063	3,440	243	18,532
August	635	6,476	5,177	1,037	20,916
September	401	6,043	5,505	467	19,133
October	593	5,763	6,437	431	23,111
November	700	5,135	5,318	410	20,680
December	379	3,964	4,266	284	14,698
TOTAL	8,958	74,332	62,163	3,847	215,103



I.C.E.S. Fishing areas around the U.K. coastline



IIIa	Kattegat and Skagerrak	VIIb	West of Ireland
IVa	Northern North Sea	VIIc	English Channel, East
IVb	Middle North Sea	VIIe	English Channel, West
IVc	Southern North Sea	VIIf	Bristol Channel
Vb	Faroe	VIIg	South East Ireland
VIa	West of Scotland	VIIh	Little Sole Bank
VIIa	Irish Sea	VIIi	Great Sole Bank

FISHING EFFORT, VALUE BY SPECIES GROUP, WEIGHT BY INDIVIDUAL SPECIES BY MAIN FISHING METHODS

	TOTAL NORTH SEA (ICES AREAS IVa, b and c)					
	Motor Trawl	Light Trawl	Nephrop Trawl	Seine Net	Other + Methods	All Methods
a) Fishing effort						
Arrivals	449	14,125	13,950	14,016	58,298	100,838
Hours fishing	33,135	268,196	155,311	382,992	617,562	1,457,196
Days absent	2,473	23,675	16,386	42,851	76,462	161,847
b) Value of catch (£'000)						
Demersal	4,618	19,879	1,052	58,554	33,572	117,675
Pelagic	6	-	+	+	6,336	6,343
Shellfish	8	520	6,424	33	5,491	12,476
Total	4,632	20,399	7,477	58,587	45,399	136,494
c) Weight of catch (tonnes)						
DEMERSAL FISH						
Blue ling	-	-	-	-	-	-
Brill	0.1	1.8	0.5	2.3	0.5	5.3
Catfish	19.6	129.6	16.7	565.4	271.8	1,003.2
Cod	1,526.1	8,738.6	403.5	22,663.2	17,356.8	50,688.2
Conger eels	0.8	0.9	-	0.2	0.2	2.1
Dabs	24.4	215.5	42.5	312.0	128.2	722.5
Dogfish	127.3	300.6	21.9	792.7	434.9	1,677.5
Dover sole	0.1	0.4	-	-	1.0	1.6
Flounders	-	-	-	-	-	-
Greenland halibut	-	-	-	-	-	-
Gurnards	5.7	2.1	-	-	2.8	10.7
Haddock	2,870.8	11,477.6	697.3	52,588.1	32,277.9	99,911.8
Hake	9.1	106.1	5.7	301.3	78.0	500.3
Halibut	2.6	12.3	1.9	25.4	12.5	54.8
Lemon sole	108.8	717.7	53.2	691.3	542.9	2,114.0
Ling	158.5	1,099.8	33.8	559.5	354.7	2,206.2
Lythe	19.0	45.1	0.8	113.6	102.4	280.9
Megrimms	57.7	507.9	32.2	493.9	52.5	1,144.2
Monks	183.5	1,695.6	234.5	995.7	352.9	3,462.0
Norway pout	-	-	-	-	51.1	51.1
Plaice	71.0	1,161.1	88.8	1,713.3	1,274.9	4,309.1
Roundnose grenadier	-	0.6	-	-	-	0.6
Redfish	0.1	0.2	-	-	-	0.4
Saithe	2,331.4	1,141.8	1.6	2,018.8	3,212.4	8,706.0
Sandeels	-	0.1	-	-	17,222.6	17,222.7
Skate	155.2	717.0	27.3	342.6	334.0	1,576.0
Torsk	2.9	3.0	-	2.8	1.2	10.0
Turbot	12.4	24.0	1.3	40.2	35.0	112.9
Whiting	1,035.6	5,391.9	317.4	14,406.4	5,858.8	27,010.2
Witches	8.1	194.8	108.8	873.9	81.0	1,266.5
Livers	-	0.1	-	-	0.1	0.2
Roes	14.0	29.0	-	71.3	19.5	133.8
Other demersal	0.3	4.3	0.3	4.3	2.3	11.4
TOTAL	8,745.0	33,719.7	2,090.0	99,578.5	80,062.9	224,196.0
PELAGIC FISH						
Herring	163.1	-	-	-	55,632.2	55,795.3
Horse mackerel	-	-	-	-	952.6	952.6
Mackerel	0.6	-	-	0.1	63.6	64.2
Blue whiting	-	-	0.1	-	-	0.1
Sprats	-	-	-	-	-	-
Other pelagic	-	-	-	-	-	-
TOTAL	163.6	-	0.1	0.1	56,648.4	56,812.3
WET FISH	8,908.7	33,719.7	2,090.1	99,578.6	136,711.2	281,008.3
SHELLFISH						
Brown shrimps	-	-	-	-	-	-
Whelks	-	-	-	-	-	-
Periwinkles	-	-	-	-	551.5	551.5
Edible crabs	-	1.5	-	1.9	2,601.8	2,605.1
Lobsters	-	-	-	-	338.1	338.1
Oysters	-	-	-	-	-	-
Pink shrimps	-	7.1	2.0	-	1,337.6	1,346.6
Crawfish	-	-	-	-	-	-
Cockles	-	-	-	-	0.1	0.1
Scallops	-	-	-	-	678.5	678.5
Mussels	-	-	-	-	312.0	312.0
Norway lobsters	0.4	383.7	4,967.7	0.6	16.0	5,368.4
Squids	5.2	10.7	6.6	18.5	13.5	54.4
Queen scallops	-	-	-	-	162.1	162.1
Other shellfish	-	-	-	0.8	0.3	1.1
TOTAL	5.6	403.0	4,976.3	21.7	6,011.4	11,418.0
TOTAL OF ALL FISH	8,914.2	34,122.8	7,066.4	99,600.3	142,722.6	292,426.2

+Other methods comprise White Fish Pair Trawl, Great Lines, Small and Hand Lines, Industrial Trawl, Single and Two Boat Pelagic Trawl, Queen Scallop Trawl, Shrimp Trawl, Purse Seine, Scallop Dredge, Ground Nets, Creel Fishing and Shell Fishing by Hand.

NORTHERN NORTH SEA (ICES AREA IVa)						
Motor Trawl	Light Trawl	Nephrop Trawl	Seine Net	Other + Methods	All Methods	
						(a) Fishing effort
252	7,259	4,786	10,674	31,493	54,464	Arrivals
24,273	184,957	76,759	300,400	258,768	845,157	Hours fishing
1,828	15,393	7,165	34,098	43,751	102,235	Days absent
						(b) Value of catch (£'000)
3,737	15,645	847	47,411	20,564	88,204	Demersal
1	-	+	+	6,032	6,033	Pelagic
7	417	3,943	33	3,661	8,061	Shellfish
3,745	16,062	4,790	47,444	30,257	102,298	Total
						(c) Weight of catch (tonnes)
						DEMERSAL FISH
-	-	-	-	-	-	Blue ling
-	1.7	0.5	2.0	0.3	4.4	Brill
10.7	83.8	14.5	443.4	203.0	755.4	Catfish
1,267.5	6,683.6	208.1	17,282.0	12,558.0	37,999.2	Cod
0.7	0.8	-	0.2	0.2	1.9	Conger eels
10.7	87.7	30.4	179.0	26.5	334.3	Dabs
119.2	271.7	21.4	623.5	190.6	1,226.4	Dogfish
0.1	0.3	-	-	-	0.5	Dover sole
-	-	-	-	-	-	Flounders
-	-	-	-	-	-	Greenland halibut
5.7	2.1	-	-	2.7	10.5	Gurnards
2,059.4	8,412.1	638.6	40,592.2	15,562.4	67,264.8	Haddock
8.8	105.3	5.7	289.3	71.2	480.3	Hake
2.1	9.9	1.8	17.9	9.4	41.1	Halibut
22.7	263.2	33.4	317.8	146.6	783.6	Lemon sole
153.4	1,081.9	33.5	545.1	330.1	2,143.9	Ling
18.6	43.3	0.7	103.2	90.2	256.1	Lythe
56.4	506.0	32.2	488.7	51.0	1,134.3	Megrims
154.5	1,569.3	210.7	876.9	252.7	3,064.0	Monks
-	-	-	-	51.1	51.1	Norway pout
45.1	625.5	69.7	985.9	496.0	2,222.1	Plaice
-	0.6	-	-	-	0.6	Roundnose grenadier
0.1	0.2	-	-	-	0.4	Redfish
2,267.1	1,029.2	1.0	1,885.4	2,826.1	8,009.0	Saithe
-	-	-	-	17,222.6	17,222.6	Sandeels
121.9	567.0	22.6	313.1	243.6	1,268.2	Skate
2.9	3.0	-	2.7	1.1	9.8	Torsk
2.3	14.2	1.0	26.8	14.5	58.8	Turbot
946.1	5,016.0	289.3	13,634.9	3,379.1	23,265.4	Whiting
6.1	172.0	107.0	743.8	64.6	1,093.5	Witches
-	0.1	-	-	0.1	0.2	Livers
12.8	20.4	-	64.6	14.2	112.0	Roes
0.3	4.1	0.2	4.1	1.9	10.5	Other demersal
7,295.4	26,574.8	1,722.4	79,422.8	53,809.5	168,824.8	TOTAL
						PELAGIC FISH
2.8	-	-	-	52,097.4	52,100.2	Herring
-	-	-	-	952.6	952.6	Horse mackerel
0.6	-	-	0.1	62.1	62.7	Mackerel
-	-	0.1	-	-	0.1	Blue whiting
-	-	-	-	-	-	Sprats
-	-	-	-	-	-	Other pelagic
3.4	-	0.1	0.1	53,112.0	53,115.6	TOTAL
7,298.7	26,574.8	1,722.5	79,422.9	106,921.4	221,940.4	WET FISH
						SHELLFISH
-	-	-	-	-	-	Brown shrimps
-	-	-	-	-	-	Whelks
-	-	-	-	43.2	43.2	Periwinkles
-	1.3	-	1.9	1,792.7	1,795.9	Edible crabs
-	-	-	-	152.2	152.2	Lobsters
-	-	-	-	-	-	Oysters
-	6.1	2.0	-	1,332.9	1,341.0	Pink shrimps
-	-	-	-	-	-	Crawfish
-	-	-	-	0.1	0.1	Cockles
-	-	-	-	676.2	676.2	Scallops
-	-	-	-	284.5	284.5	Mussels
0.4	306.7	2,955.3	0.6	15.7	3,278.6	Norway lobsters
4.7	9.8	6.6	18.4	10.7	50.1	Squids
-	-	-	-	162.1	162.1	Queen scallops
-	-	-	0.1	-	0.1	Other shellfish
5.1	324.0	2,963.8	20.9	4,470.3	7,784.1	TOTAL
7,303.8	26,898.8	4,686.3	79,443.8	111,391.7	229,724.5	TOTAL OF ALL FISH

+Other methods comprise White Fish Pair Trawl, Industrial Trawl, Great Lines, Small and Hand Lines, Single and Two Boat Pelagic Trawl, Queen Scallop Trawl, Shrimp Trawl, Scallop Dredge, Ground Nets, Creel Fishing and Shell Fishing by Hand.

	MIDDLE NORTH SEA (ICES AREA IVb)					
	Motor Trawl	Light Trawl	Nephrop Trawl	Seine Net	Other + Methods	All Methods
a) Fishing effort						
Arrivals	195	6,868	9,164	3,340	26,802	46,369
Hours fishing	8,726	83,369	78,552	82,516	358,696	611,859
Days absent	624	8,292	9,221	8,741	32,699	59,577
b) Value of catch (£'000)						
Demersal	848	4,234	206	11,143	13,005	29,436
Pelagic	-	-	-	-	280	280
Shellfish	1	103	2,481	+	1,829	4,415
Total	849	4,337	2,687	11,143	15,114	34,131
c) Weight of catch (tonnes)						
DEMERSAL FISH						
Blue ling	-	-	-	-	-	-
Brill	-	0.2	-	0.4	0.2	0.8
Catfish	8.8	45.9	2.2	122.0	68.7	247.6
Cod	245.3	2,055.0	195.4	5,381.3	4,798.1	12,675.1
Conger eels	0.1	0.1	-	-	-	0.2
Dabs	13.7	127.8	12.1	133.0	101.2	387.8
Dogfish	7.6	28.9	0.5	169.2	244.3	450.5
Dover sole	-	0.1	-	-	0.4	0.5
Flounders	-	-	-	-	-	-
Greenland halibut	-	-	-	-	-	-
Gurnards	-	-	-	-	0.1	0.1
Haddock	792.0	3,065.5	58.6	11,995.9	16,714.8	32,626.9
Hake	0.3	0.8	0.1	11.9	6.8	20.0
Halibut	0.4	2.4	0.1	7.5	3.2	13.6
Lemon sole	86.0	454.5	19.8	373.6	396.4	1,330.3
Ling	5.0	17.9	0.3	14.4	24.6	62.2
Lythe	0.1	1.8	0.1	10.4	12.2	24.6
Megrims	1.3	1.9	-	5.2	1.5	9.9
Monks	28.7	126.3	23.8	118.8	99.9	397.5
Norway pout	-	-	-	-	-	-
Plaice	25.7	535.7	19.1	727.4	778.1	2,085.9
Roundnose grenadier	-	-	-	-	-	-
Redfish	-	-	-	-	-	-
Saithe	7.5	112.5	0.6	133.4	386.3	640.3
Sandeels	-	0.1	-	-	-	0.1
Skate	32.9	150.0	4.6	29.4	90.3	307.2
Torsk	-	-	-	0.1	-	0.1
Turbot	10.0	9.9	0.3	13.4	20.4	54.1
Whiting	83.8	375.9	28.2	771.5	2,479.7	3,739.1
Witches	2.0	22.8	1.7	130.1	16.4	172.9
Livers	-	-	-	-	-	-
Roes	1.2	8.7	-	6.7	5.3	21.8
Other demersal	-	0.2	0.1	0.2	0.5	0.9
TOTAL	1,352.5	7,144.9	367.5	20,155.7	26,249.4	55,270.0
PELAGIC FISH						
Herring	-	-	-	-	2,896.3	2,896.3
Horse mackerel	-	-	-	-	-	-
Mackerel	-	-	-	-	1.5	1.5
Blue whiting	-	-	-	-	-	-
Sprats	-	-	-	-	-	-
Other pelagic	-	-	-	-	-	-
TOTAL	-	-	-	-	2,897.8	2,897.8
WET FISH	1,352.5	7,144.9	367.5	20,155.7	29,147.2	58,167.8
SHELLFISH						
Brown shrimps	-	-	-	-	-	-
Whelks	-	-	-	-	-	-
Periwinkles	-	-	-	-	508.3	508.3
Edible crabs	-	0.1	-	-	809.1	809.3
Lobsters	-	-	-	-	185.9	185.9
Oysters	-	-	-	-	-	-
Pink shrimps	-	0.9	-	-	4.7	5.6
Crawfish	-	-	-	-	-	-
Cockles	-	-	-	-	-	-
Scallops	-	-	-	-	1.9	1.9
Mussels	-	-	-	-	27.5	27.5
Norway lobsters	-	77.1	2,012.5	-	0.3	2,089.9
Squids	0.5	0.9	-	0.1	2.6	4.1
Queen scallops	-	-	-	-	-	-
Other shellfish	-	-	-	0.7	0.3	1.0
TOTAL	0.5	79.1	2,012.5	0.7	1,540.6	3,633.4
TOTAL OF ALL FISH	1,353.0	7,224.0	2,380.0	20,156.4	30,687.8	61,801.2

+Other methods comprise White Fish Pair Trawl, Small and Hand Lines, Single and Two Boat Pelagic Trawl, Purse Seine, Ground Nets, Creel Fishing and Shell Fishing by Hand.

WEST OF SCOTLAND (ICES AREAS VIa)						
Motor Trawl	Light Trawl	Nephrop Trawl	Seine Net	Other + Methods	All Methods	
176	6,941	30,878	1,287	45,296	84,578	(a) Fishing effort
9,553	142,815	384,215	26,365	447,203	1,010,151	Arrivals
795	12,508	37,019	2,609	61,647	114,578	Hours fishing
						Days absent
1,360	8,843	1,844	3,010	8,586	23,643	(b) Value of catch (£'000)
2	3	15	1	22,610	22,631	Demersal
15	1,133	13,609	60	10,027	24,843	Pelagic
1,376	9,979	15,468	3,071	41,222	71,117	Shellfish
						Total
						(c) Weight of catch (tonnes)
						DEMERSAL FISH
						Blue ling
	4.6	3.0	2.2	0.6	10.4	Brill
2.2	2.5	0.3	0.3	1.1	6.4	Catfish
218.8	2,667.3	661.8	420.7	2,719.6	6,688.2	Cod
0.5	74.4	17.5	1.7	0.7	94.9	Conger eels
5.7	59.7	37.7	27.8	17.6	148.4	Dabs
109.8	2,001.6	744.5	833.8	404.5	4,094.1	Dogfish
0.1	3.6	1.4	2.3	0.2	7.7	Dover sole
	6.0	7.5	1.8		15.4	Flounders
						Greenland halibut
14.6	7.9	1.6	2.6	7.3	34.1	Gurnards
1,083.0	3,857.1	353.9	1,416.8	6,645.7	13,356.5	Haddock
11.0	293.1	203.3	255.1	56.7	819.2	Hake
1.0	9.9	6.0	2.7	6.9	26.5	Halibut
4.1	51.1	37.7	27.5	7.6	128.0	Lemon sole
26.2	161.2	35.0	12.4	189.6	424.4	Ling
32.5	83.4	24.0	3.7	114.3	258.0	Lythe
25.3	525.2	146.0	98.0	21.9	816.3	Megrimms
53.9	810.3	267.5	76.2	60.6	1,268.5	Monks
				12.5	12.5	Norway pout
43.2	492.7	111.1	293.9	63.5	1,004.4	Plaice
						Roundnose grenadier
						Redfish
192.1	1,005.8	212.0	61.1	621.6	2,092.6	Saithe
		0.1		18,585.9	18,586.0	Sandeels
70.1	834.9	276.2	318.6	195.4	1,695.1	Skate
0.4	0.3		0.1	0.1	0.9	Torsk
3.9	24.4	3.5	6.7	1.1	39.7	Turbot
348.6	2,629.8	972.5	1,558.9	2,531.0	8,040.8	Whiting
2.4	238.7	227.1	39.4	8.5	516.1	Witches
	2.2				2.2	Livers
10.3	85.2	1.8	7.2	26.9	131.5	Roes
	2.4	2.3	3.9	1.5	10.1	Other demersal
2,259.8	15,935.3	4,355.3	5,475.4	32,303.0	60,328.8	TOTAL
						PELAGIC FISH
4.0	13.4	53.1	0.3	30,995.0	31,065.9	Herring
	0.5	1.4	0.7	1,424.8	1,427.4	Horse mackerel
0.9	0.9	15.6	1.1	170,826.5	170,845.0	Mackerel
		0.2			0.2	Blue whiting
				2,945.9	2,945.9	Sprats
						Other pelagic
4.9	14.8	70.4	2.1	206,192.1	206,284.4	TOTAL
2,264.7	15,950.1	4,425.7	5,477.6	238,495.1	266,613.2	WET FISH
						SHELLFISH
						Brown shrimps
						Whelks
				1,416.4	1,416.4	Periwinkles
	2.6			1,628.2	1,630.8	Edible crabs
				277.5	277.5	Lobsters
						Oysters
						Pink shrimps
				20.0	20.0	Crawfish
				29.2	29.2	Cockles
				3,001.3	3,001.3	Scallops
						Mussels
0.8	814.1	10,292.6	0.8	1,340.8	12,449.2	Norway lobsters
7.5	35.2	11.5	34.4	28.7	117.2	Squids
	1.7	1.8		533.8	537.3	Queen scallops
				10.5	10.5	Other shellfish
8.4	853.6	10,305.8	35.1	8,716.5	19,919.4	TOTAL
2,273.1	16,803.7	14,731.5	5,512.7	247,211.6	286,532.6	TOTAL ALL FISH

+Other Methods comprise Small and Hand Lines, Great Lines, Purse Seine, Two Boat Pelagic Trawl, White Fish Trawl, Queen Scallop Trawl, Drift Net, Scallop Dredge, Ground Nets, Creel Fishing and Shell Fishing by Hand.

	NORWEGIAN COAST (IIa)	SOUTHERN NORTH SEA (IVc)	FAROE (Vb)
	All Methods	All Methods	All Methods
(a) Fishing effort			
Arrivals	1	5	2
Hours fishing	40	180	541
Days absent	6	35	21
(b) Value of catch (£'000)			
Demersal	8	36	176
Pelagic	-	29	-
Shellfish	-	+	-
Total	8	65	176
(c) Weight of catch (tonnes)			
DEMERSAL FISH			
Blue ling	-	-	-
Brill	-	0.1	-
Catfish	-	0.2	0.1
Cod	1.6	14.0	17.0
Conger eels	-	-	-
Dabs	-	0.5	-
Dogfish	-	0.5	-
Dover sole	-	0.5	-
Flounders	-	-	-
Greenland halibut	-	-	-
Gurnards	-	-	-
Haddock	4.5	20.1	17.6
Hake	-	-	-
Halibut	-	0.1	0.1
Lemon sole	-	0.1	0.4
Ling	1.1	0.1	0.5
Lythe	-	0.3	-
Megrims	1.1	-	-
Monks	0.4	0.6	0.4
Norway pout	-	-	-
Plaice	-	1.0	0.1
Roundnose grenadier	-	-	-
Redfish	-	-	-
Saithe	0.3	56.7	352.4
Sandeels	-	-	-
Skate	0.1	0.6	0.3
Torsk	-	-	0.1
Turbot	-	-	-
Whiting	2.4	5.7	-
Witches	-	-	0.1
Livers	-	-	-
Roes	-	-	-
Other demersal	-	-	-
TOTAL	11.4	101.2	389.0
PELAGIC FISH			
Herring	-	798.9	-
Horse mackerel	-	-	-
Mackerel	-	-	-
Blue whiting	-	-	-
Sprats	-	-	-
Other pelagic	-	-	-
TOTAL	-	798.9	-
WET FISH	11.4	900.1	389.0
SHELLFISH			
Brown shrimps	-	-	-
Whelks	-	-	-
Periwinkles	-	-	-
Edible crabs	-	-	-
Lobsters	-	-	-
Oysters	-	-	-
Pink shrimps	-	-	-
Crawfish	-	-	-
Cockles	-	-	-
Scallops	-	0.4	-
Mussels	-	-	-
Norway lobsters	-	-	-
Squids	-	0.1	-
Queen scallops	-	-	-
Other shellfish	-	-	-
TOTAL	-	0.5	-
TOTAL OF ALL FISH	11.4	900.6	389.0

LANDINGS IN SCOTLAND BY UNITED KINGDOM VESSELS FROM SPECIFIED ICES AREAS TABLE 12 — continued

ROCKALL (VIb)	IRISH SEA (VIIa)	PORCUPINE BANK (VIIc)	
All Methods	All Methods	All Methods	
176	2,549	1	(a) Fishing effort
13,443	58,709	48	Arrivals
1,374	4,620	11	Hours fishing
			Days absent
3,755	1,889	6	(b) Value of catch (£'000)
-	+	-	Demersal
87	1,571	-	Pelagic
3,842	3,460	6	Shellfish
			Total
			(c) Weight of catch (tonnes)
			DEMERSAL FISH
-	-	-	Blue ling
-	7.1	-	Brill
18.4	0.2	-	Catfish
364.1	864.9	0.2	Cod
0.2	38.1	-	Conger eels
0.4	13.3	-	Dabs
15.2	211.1	-	Dogfish
-	24.8	-	Dover sole
-	0.4	-	Flounders
-	-	-	Greenland halibut
2.1	2.2	-	Gurnards
5,686.2	92.4	6.3	Haddock
0.2	224.0	-	Hake
11.0	0.1	-	Halibut
14.6	5.2	-	Lemon sole
105.6	13.9	0.3	Ling
0.6	39.4	-	Lythe
73.0	1.3	0.2	Megrims
218.1	28.1	0.6	Monks
-	-	-	Norway pout
2.7	111.5	-	Plaice
-	-	-	Roundnose grenadier
0.2	-	-	Redfish
580.0	419.5	4.2	Saithe
-	-	-	Sandeels
49.4	182.7	0.1	Skate
11.9	0.2	0.1	Torsk
5.4	2.8	0.1	Turbot
5.0	327.3	-	Whiting
1.9	4.7	-	Witches
-	0.1	-	Livers
8.9	8.9	-	Roes
0.4	1.9	-	Other demersal
7,175.6	2,626.2	12.0	TOTAL
			PELAGIC FISH
-	0.6	-	Herring
-	1.2	-	Horse mackerel
-	0.3	-	Mackerel
-	-	-	Blue whiting
-	-	-	Sprats
-	-	-	Other pelagic
-	2.1	-	TOTAL
7,175.6	2,628.3	12.0	WET FISH
			SHELLFISH
-	14.2	-	Brown shrimps
-	-	-	Whelks
-	67.1	-	Periwinkles
-	-	-	Edible crabs
-	3.6	-	Lobsters
-	-	-	Oysters
-	-	-	Pink shrimps
-	-	-	Crawfish
-	-	-	Cockles
-	540.7	-	Scallops
-	-	-	Mussels
-	69.7	-	Norway lobsters
77.9	6.0	-	Squids
-	2,615.8	-	Queen scallops
-	-	-	Other shellfish
77.9	3,317.1	-	TOTAL
7,253.5	5,945.4	12.0	TOTAL OF ALL FISH

BASE DISTRICT OF VESSEL BY LANDING DISTRICT

(a) Weight (tonnes)

BASE DISTRICT*	EAST COAST LANDING DISTRICTS (Eyemouth-Wick)										Total East Coast
	Eye-mouth	Pitten-weem	Arbroath	Aberdeen	Peterhead	Fraserburgh	Macduff	Buckie	Lossiemouth	Wick	
Eyemouth	10,171	359	2	1,091	1,794	4	-	-	2	-	13,423
Pittenweem	2	3,763	31	11,315	1,343	5	-	-	25	-	16,484
Arbroath	-	139	5,025	1,000	720	-	-	-	46	-	6,931
Aberdeen	7	9	26	19,218	835	4	8	-	-	296	20,404
Peterhead	2	24	-	1,422	40,051	5,924	3	-	-	-	47,425
Fraserburgh	-	62	4	2,231	16,732	19,407	-	3	30	115	38,585
Macduff	-	94	-	1,326	10,121	9,406	5,768	42	21	1	26,779
Buckie	-	-	-	2,290	17,742	1,271	27	3,551	-	121	25,001
Lossiemouth	-	12	-	2,937	17,521	561	18	164	1,261	13	22,488
Wick	1	-	-	258	589	44	1	459	306	4,703	6,363
Orkney	-	1	-	3,232	716	753	-	-	9	272	4,982
Shetland	1	-	-	651	141	1,262	-	-	-	-	2,055
Stornoway	-	-	-	-	3	1	-	1	1	-	7
Kinlochbervie	-	15	-	-	-	-	-	-	-	1	16
Ullapool	-	-	-	17	563	67	34	43	4	13	742
Mallaig	-	-	2	-	16	1,011	-	-	6	36	1,071
Oban	-	30	-	-	5	1	-	-	-	-	37
Campbeltown	-	1	-	-	20	-	-	-	-	-	21
Ayr	-	59	-	-	9	780	-	114	-	-	962
ALL DISTRICTS	10,185	4,568	5,090	46,990	108,920	40,498	5,860	4,378	1,712	5,571	233,774

BASE DISTRICT*	WEST COAST LANDING DISTRICTS (Stornoway-Ayr)								ALL DISTRICTS		
	Orkney	Shetland	Stornoway	Kinlochbervie	Ullapool	Mallaig	Oban	Campbeltown	Ayr	Total West Coast	Total Landings
Eyemouth	-	6	4	-	145	32	124	1	137	443	13,872
Pittenweem	-	191	-	-	23	83	72	-	104	282	16,957
Arbroath	-	8	1	-	10	8	-	-	12	32	6,971
Aberdeen	-	-	-	1,517	-	38	1	5	8	1,569	21,973
Peterhead	10	5,276	36	593	28,041	559	148	3	-	29,381	82,092
Fraserburgh	-	10,248	4,368	291	57,441	944	221	-	240	63,504	112,337
Macduff	-	8,208	1,446	8,430	26,603	919	16	-	-	37,413	72,402
Buckie	-	88	62	4,287	2,273	1,055	-	-	16	7,694	32,782
Lossiemouth	-	122	30	1,706	3,074	2,535	1,498	167	286	9,297	31,907
Wick	16	-	1	193	-	12	2	-	-	208	6,585
Orkney	3,189	703	340	-	4,206	-	-	40	2	4,588	13,461
Shetland	-	40,581	265	-	33,998	-	-	-	1	34,265	76,901
Stornoway	-	-	24,425	405	236	826	5	-	17	25,915	25,922
Kinlochbervie	-	-	-	1,350	35	87	17	67	98	1,654	1,669
Ullapool	-	4	-	275	2,205	99	-	33	1	2,614	3,359
Mallaig	-	867	525	-	4,575	5,502	31	-	9	10,641	12,580
Oban	-	-	35	-	2	88	1,757	3	5	1,890	1,926
Campbeltown	-	-	5	32	399	27	113	6,427	726	7,728	7,749
Ayr	-	650	343	39	1,322	231	93	133	13,463	15,624	17,236
ALL DISTRICTS	3,214	66,951	31,889	19,116	164,589	13,046	4,097	6,883	15,125	254,744	558,682

*Landings of 254 tonnes by vessels not allocated to Scottish base district at the time of landings are excluded.

BASE DISTRICT OF VESSEL BY LANDING DISTRICT

(b) Value (£'000)

BASE DISTRICT*	EAST COAST LANDING DISTRICTS (Eyemouth-Wick)										
	Eyemouth	Pittenweem	Arbroath	Aberdeen	Peterhead	Fraserburgh	Macduff	Buckie	Lossiemouth	Wick	Total East Coast
Eyemouth	7,279	167	2	783	1,148	5	-	-	3	-	9,386
Pittenweem	2	2,560	16	6,561	740	2	-	-	25	-	9,906
Arbroath	-	124	2,862	561	460	-	-	-	49	-	4,056
Aberdeen	4	7	15	10,744	524	2	5	-	-	135	11,439
Peterhead	2	25	-	389	21,791	1,095	1	-	-	-	23,304
Fraserburgh	-	62	4	1,038	9,121	5,358	-	3	30	17	15,632
Macduff	-	97	-	540	4,666	3,225	2,875	21	24	-	11,445
Buckie	-	-	-	1,336	10,132	937	15	3,083	-	80	15,582
Lossiemouth	1	12	-	1,918	11,198	214	7	142	977	7	14,476
Wick	-	-	-	134	367	23	-	225	311	2,455	3,516
Orkney	-	1	-	1,652	467	75	-	-	10	145	2,350
Shetland	1	-	-	173	75	137	-	-	-	-	385
Stornoway	-	-	-	-	2	1	-	1	2	-	6
Kinlochbervie	-	12	-	-	-	-	-	-	-	1	13
Ullapool	-	-	-	12	343	45	13	32	3	9	456
Mallaig	-	-	1	-	3	96	-	-	6	1	107
Oban	-	32	-	-	1	2	-	-	-	-	35
Campbeltown	-	1	-	-	12	-	-	-	-	-	13
Ayr	-	31	-	-	5	105	-	51	-	-	191
ALL DISTRICTS	7,290	3,130	2,900	25,841	61,054	11,322	2,916	3,557	1,439	2,850	122,300

BASE DISTRICT*	WEST COAST LANDING DISTRICTS (Stornoway-Ayr)								ALL DISTRICTS		
	Orkney	Shetland	Stornoway	Kinlochbervie	Ullapool	Mallaig	Oban	Campbeltown	Ayr	Total West Coast	Total Landings
Eyemouth	-	4	2	-	42	28	113	1	133	322	9,711
Pittenweem	-	134	-	-	16	81	76	1	71	245	10,285
Arbroath	-	5	1	-	8	10	-	-	7	26	4,086
Aberdeen	-	-	-	807	-	37	1	2	4	852	12,291
Peterhead	3	789	19	422	3,623	432	114	3	-	4,614	28,709
Fraserburgh	-	1,384	226	166	6,433	749	168	-	106	7,847	24,863
Macduff	-	961	76	4,725	3,474	780	19	-	-	9,075	21,482
Buckie	-	55	33	2,421	1,780	795	-	-	10	5,040	20,677
Lossiemouth	-	67	11	886	1,768	1,717	812	88	162	5,444	19,987
Wick	6	-	1	125	-	10	4	-	-	142	3,664
Orkney	2,024	97	17	-	441	-	-	29	2	489	4,960
Shetland	-	9,899	20	-	3,692	-	-	-	1	3,714	13,999
Stornoway	-	-	5,886	195	42	514	1	-	5	6,643	6,648
Kinlochbervie	-	-	-	826	27	57	16	33	77	1,036	1,049
Ullapool	-	2	1	147	1,964	89	-	68	-	2,269	2,727
Mallaig	-	93	40	-	518	4,507	24	1	7	5,097	5,296
Oban	-	-	8	-	2	49	1,907	2	6	1,975	2,009
Campbeltown	-	-	4	9	52	37	104	5,206	613	6,027	6,040
Ayr	-	74	21	19	184	148	45	85	7,652	8,153	8,417
ALL DISTRICTS	2,033	13,566	6,369	10,748	24,070	10,038	3,404	5,520	8,858	69,005	206,902

* Value of landings (£295,000) by vessels not allocated to a Scottish base district at the time of landings are excluded.

LANDINGS BY SCOTTISH VESSELS IN ENGLAND AND WALES
BY MAIN PORTS

TABLE 14

England & Wales	WEIGHT (TONNES)				VALUE (£'000)			
	Demersal	Pellagic	Shellfish	Total	Demersal	Pelagic	Shellfish	Total
North Shields	4,726	1,393	69	6,188	3,038	78	91	3,206
Hull	-	1,373	-	1,373	-	59	-	59
Grimsby	165	711	+	876	88	29	+	117
Plymouth	-	465	-	465	-	35	-	35
River Fal	-	605	-	605	-	48	-	48
Other Ports	2,450	1,716	529	4,696	1,545	211	345	2,102
Total	7,341	6,263	598	14,203	4,671	460	436	5,567

LANDINGS BY SCOTTISH VESSELS IN ENGLAND AND WALES BY SPECIES

TABLE 15

	Weight (Tonnes)					Value (£'000)				
	1981	1982	1983	1984	1985	1981	1982	1983	1984	1985
Cod	4,965	3,738	4,075	2,051	2,052	2,487	2,339	2,523	1,534	1,688
Haddock	2,841	4,150	3,284	2,059	3,533	1,184	1,745	1,658	1,281	1,948
Lemon sole	133	132	132	116	155	136	126	114	120	169
Plaice	220	211	188	297	302	113	115	121	197	196
Whiting	672	555	449	637	668	205	179	163	258	257
Herring	19	3,233	101	937	4,546	4	159	19	60	350
Horse mackerel	2,059	1,879	507	96	1	134	140	34	8	+
Mackerel	42,305	28,171	33,675	23,123	475	3,240	2,361	2,627	2,111	25
Sprats	4,470	857	95	-	222	313	64	8	-	7
Pilchards	3,342	4,265	6,418	1,235	1,020	248	293	385	132	79
Norway lobsters	274	793	747	435	255	249	832	844	491	305
Queen scallops	685	1,019	1,412	860	318	151	201	288	235	90
Other species	432	579	346	374	656	180	256	240	234	455
Total	62,417	49,572	51,429	32,220	14,203	8,643	8,810	9,027	6,661	5,567

LANDINGS BY SCOTTISH VESSELS AND UNITED KINGDOM VESSELS IN UNITED KINGDOM

TABLE 16

	Weight (Thou Tonnes)					Value (£ million)				
	1981	1982	1983	1984	1985	1981	1982	1983	1984	1985
Scottish vessels										
Scotland	427.3	470.2	469.9	514.2	558.9	124.4	144.6	164.8	188.5	207.2
England and Wales	69.4	58.7	50.7	32.2	14.8	9.1	9.6	9.6	6.7	6.0
Northern Ireland	0.3	0.6	0.2	1.3	0.2	0.1	0.2	+	0.1	+
UK	497.0	529.5	520.8	547.7	573.9	133.6	154.4	174.4	195.3	213.2
UK Vessels										
Scotland	444.0	498.2	499.1	543.3	592.6	127.5	148.7	170.2	193.9	215.1
England and Wales	283.5	251.2	230.5	171.8	146.5	95.1	103.1	101.8	96.3	98.2
Northern Ireland	20.4	25.3	18.8	18.5	21.3	6.5	8.8	8.5	7.7	10.1
UK	747.9	774.7	748.4	733.7	760.4	229.1	260.6	280.5	297.9	323.4
Scottish vessels as % of UK vessels	66.5	68.4	69.6	74.7	75.5	58.3	59.2	62.2	65.6	65.9

LANDINGS BY UNITED KINGDOM VESSELS IN ISLE OF MAN

TABLE 17

	Weight (Tonnes)					Value (£'000)				
	1981	1982	1983	1984	1985	1981	1982	1983	1984	1985
Demersal	913	934	439	439	339	261	265	174	201	170
Pelagic	1,721	1,037	798	1,107	857	333	208	171	215	160
Shellfish	6,096	4,431	7,064	6,070	5,723	1,985	1,698	2,433	2,559	2,774
Total	8,729	6,402	8,301	7,617	6,920	2,579	2,171	2,778	2,975	3,105

Note: Separate information on landings by Scottish vessels in Isle of Man not available.

METHOD OF FISHING BY LENGTH GROUP

Nationality and Fishing Method	Tonnes						£'000					
	Under 40ft	40ft- 59.9ft	60ft- 79.9ft	80ft- 109.9ft	110ft +	Total	Under 40ft	40ft- 59.9ft	60ft- 79.9ft	80ft- 109.9ft	110ft +	Total
Landings by Scottish Vessels												
Demersal Landings:												
Motor Trawl	247	22,707	51,468	6,137	7,178	87,737	137	11,343	27,679	3,713	3,468	46,341
Light Trawl	2,416	19,100	28,312	933	1	50,762	1,354	11,085	16,541	543	1	29,524
Seine Net	395	10,234	94,118	884	-	105,631	218	5,328	55,783	577	-	61,905
Line	96	1	-	-	-	97	56	1	-	-	-	57
Other	4,806	9,721	19,916	8,982	8	43,433	629	2,150	1,739	279	5	4,802
Total	7,960	61,763	193,814	16,938	7,187	287,662	2,394	29,907	101,742	5,111	3,474	142,628
Pelagic Landings:												
Purse Seine	-	386	9,712	66,468	129,722	206,289	-	40	1,018	7,391	13,941	22,390
Pelagic Trawl	40	4,228	22,688	3,593	-	30,549	5	733	2,708	329	-	3,775
Other	46	47	33	161	7	293	10	10	7	6	2	36
Total	86	4,661	32,433	70,222	129,729	237,132	16	784	3,733	7,726	13,943	26,201
Shellfish Landings:												
Nephrop Trawl	3,120	8,936	2,848	-	-	14,903	4,261	11,597	3,755	-	-	19,612
Shrimp Trawl	16	532	816	-	3	1,367	22	490	758	-	6	1,276
Creel	6,514	17	53	-	8	6,592	9,156	38	24	-	14	9,232
Scallop Dredge	803	2,464	2,234	-	273	5,774	875	2,571	1,009	-	118	4,573
Other	3,292	1,388	593	6	226	5,504	1,550	1,202	745	10	169	3,675
Total	13,746	13,337	6,544	6	509	34,142	15,864	15,897	6,290	10	307	38,368
All landings by Scottish Vessels All methods												
	21,791	79,762	232,792	87,166	137,426	558,936	18,274	46,587	111,766	12,846	17,724	207,197
Landings by: Northern Ireland Vessels:												
All landings	2	588	1,606	9,960	5,797	17,952	1	290	1,212	1,024	625	3,152
Landings by: England and Wales Vessels												
All landings	291	765	2,685	10,346	1,500	15,586	243	550	1,897	1,581	440	4,711
Landings by: Other UK Vessels												
All landings	-	38	58	-	-	96	-	12	31	-	-	44
All landings in Scotland	22,084	81,152	237,140	107,471	144,723	592,570	18,518	47,440	114,905	15,451	18,789	215,103

LANDINGS IN SCOTLAND BY UNITED KINGDOM VESSELS

TABLE 19

WEIGHT AND VALUE BY CREEK

DISTRICT AND CREEK	Weight (Tonnes)			Value (£'000)		
	Demersal	Pelagic	Shellfish	Demersal	Pelagic	Shellfish
ALL DISTRICTS	294,739	263,099	34,732	147,152.5	28,974.0	38,976.3
EYEMOUTH DISTRICT	8,453	-	1,753	5,108.2	-	2,203.7
Burroughmouth	-	-	35	-	-	69.9
Eyemouth	8,111	-	419	4,900.4	-	484.2
St Abbs	-	-	65	-	-	101.3
Cove	-	-	25	-	-	34.3
Dunbar	300	-	533	178.9	-	565.4
North Berwick	-	-	99	-	-	156.1
Port Seton	39	-	479	26.5	-	661.1
Granton	4	-	97	2.4	-	131.4
PITTENWEEM DISTRICT	3,332	1	1,479	1,645.4	0.3	1,620.9
Burntisland	-	-	6	-	-	5.3
Methil and Leven	3	-	23	1.3	-	25.3
St Monans	-	-	42	-	-	44.0
Pittenweem	3,303	1	1,014	1,632.7	0.3	1,149.9
Anstruther	25	-	151	10.8	-	144.6
Craik	-	-	179	-	-	185.9
St Andrews	1	-	64	0.6	-	66.0
ARBROATH DISTRICT	4,820	-	295	2,429.1	-	490.3
Arbroath	3,613	-	213	1,739.9	-	370.0
Montrose	651	-	34	387.7	-	48.9
Johnshaven	6	-	17	4.7	-	44.6
Gourdon	549	-	31	296.8	-	26.7
ABERDEEN DISTRICT	45,944	3,295	107	26,823.0	343.6	118.3
Catterline	16	-	17	7.7	-	11.3
Stonehaven	208	-	10	129.3	-	3.8
Aberdeen	45,719	3,295	80	26,686.0	343.6	103.2
PETERHEAD DISTRICT	105,041	3,432	921	59,933.5	376.6	945.6
Port Errol	13	-	8	15.0	-	6.6
Boddam	2	-	43	1.0	-	23.9
Peterhead	105,027	3,432	870	59,917.4	376.6	915.1
FRASERBURGH DISTRICT	12,298	27,221	1,679	6,641.9	2,818.3	1,986.9
Fraserburgh	12,298	27,221	1,679	6,641.9	2,818.3	1,986.9
Sandhaven and Pitullie	-	-	-	-	-	-
Rosehearty	-	-	-	-	-	-
Pennan	-	-	-	-	-	-
MACDUFF DISTRICT	5,781	-	143	2,801.9	-	163.2
Gardenstown	-	-	+	-	-	3.1
Macduff	3,333	-	131	1,546.5	-	145.8
Whitehills	2,448	-	11	1,255.4	-	11.9
Portsoy	-	-	+	-	-	2.4
BUCKIE DISTRICT	2,680	-	1,761	1,541.5	-	2,052.7
Portknockie	-	-	+	-	-	1.8
Findochty	-	-	+	-	-	2.1
Buckie	2,680	-	1,760	1,541.5	-	2,048.8

LANDINGS IN SCOTLAND BY UNITED KINGDOM VESSELS

TABLE 19 - continued

WEIGHT AND VALUE BY CREEK

DISTRICT AND CREEK	Weight (Tonnes)			Value (£'000)		
	Demersal	Pelagic	Shellfish	Demersal	Pelagic	Shellfish
LOSSIEMOUTH DISTRICT	537	+	1,175	311.6	+	1,127.5
Lossiemouth	486	+	416	285.6	+	521.7
Hopeman	-	-	+	-	-	0.9
Burghead	49	-	466	25.3	-	551.0
Inverness	-	-	+	-	-	3.0
Avoch	2	-	-	0.7	-	-
Portmahomack	-	-	293	-	-	51.0
WICK DISTRICT	6,077	314	584	3,234.8	28.6	543.6
Brora	-	-	19	-	-	21.5
Helmsdale	74	-	59	38.2	-	62.3
Dunbeath	-	2	12	-	0.1	12.6
Lybster	516	17	81	194.2	2.7	79.9
Wick	2,243	8	107	1,154.9	1.5	103.3
Keiss	-	-	65	-	-	43.7
John O'Groats	-	-	19	-	-	20.9
Scrabster	3,244	288	210	1,847.5	24.3	188.5
Portskerra	-	-	12	-	-	10.9
ORKNEY DISTRICT	2,261	-	954	1,152.9	-	880.2
Sanday	-	-	15	-	-	89.4
Westray	5	-	270	2.8	-	194.1
Stronsay	-	-	8	-	-	40.9
Rousay	-	-	239	-	-	101.7
Kirkwall	2,013	-	180	1,019.8	-	163.6
Stromness	243	-	143	130.3	-	179.6
South Ronaldsay	-	-	40	-	-	49.4
Hoy	-	-	60	-	-	61.4
SHETLAND DISTRICT	32,587	35,756	642	9,336.5	4,080.5	416.7
South Mainland and Fair Isle	-	-	+	-	-	3.2
Lerwick	19,279	34,879	13	4,416.4	3,967.5	18.1
Whalsay	14	-	2	8.1	-	12.8
Skerries	32	-	1	19.2	-	7.1
Yell and Fetlar and Unst	740	-	92	469.8	-	90.6
Central Mainland	81	-	248	52.7	-	180.9
Northmavine	265	-	64	169.5	-	24.4
West Mainland	9	-	130	4.2	-	46.7
Scalloway	12,168	877	93	4,196.6	113.0	33.0
STORNOWAY DISTRICT	20,097	8,942	4,095	1,146.5	467.2	5,102.9
Lochs	-	2	43	-	0.5	31.2
Stornoway	17,203	7,609	1,585	931.4	401.1	1,893.8
Portnaguran & Ness	-	-	78	-	-	47.0
Berneray (Lewis)	-	-	433	-	-	343.9
North Harris	14	3	377	4.9	2.1	516.6
Scalpay	-	-	4	-	-	36.0
South Harris	1	-	78	+	-	162.5
Berneray (N Uist)	-	-	29	-	-	108.7
North Uist	-	-	268	-	-	482.9
Grimsay	-	-	35	-	-	126.6
Benbecula	-	-	47	-	-	45.1
South Uist and Eriskay	-	-	411	-	-	472.6
Barra	2,878	1,329	707	210.3	63.5	836.2
KINLOCHBERVIE DISTRICT	18,984	-	134	10,433.4	-	315.4
Eriboll	-	-	7	-	-	40.7
Kinlochbervie	18,984	-	58	10,433.4	-	115.6
Scourie	-	-	+	-	-	1.1
Kylesku	+	-	69	+	-	158.1

WEIGHT AND VALUE BY CREEK

DISTRICT AND CREEK	Weight (Tonnes)			Value (£'000)		
	Demersal	Pelagic	Shellfish	Demersal	Pelagic	Shellfish
ULLAPOOL DISTRICT	6,786	177,916	2,200	3,967.7	19,651.2	2,918.9
Loch Inver	6,439	-	1,098	3,797.5	-	1,440.5
Ullapool	163	177,916	347	101.9	19,651.2	585.8
Aultbea	-	-	12	-	-	11.6
Cove	-	-	6	-	-	2.4
Gairloch	185	-	737	68.3	-	878.5
MALLAIG DISTRICT	6,911	1,875	4,725	4,030.6	168.5	6,159.2
Torridon	-	-	198	-	-	228.8
Kyle	3	-	320	1.0	-	546.3
Sleat	1	-	88	0.4	-	90.2
Broadford	-	-	56	-	-	34.9
Portree	12	-	286	5.9	-	390.7
Snizort	9	-	468	5.2	-	495.8
Dunvegan	41	-	109	27.5	-	83.2
Bracadale	-	-	137	-	-	179.4
Strathaird	-	-	76	-	-	104.7
Mallaig	6,845	1,875	2,796	3,990.7	168.5	3,855.4
Arisaig	-	-	137	-	-	104.4
Ardnamurchan	-	-	53	-	-	45.6
OBAN DISTRICT	2,201	132	1,954	1,137.5	15.0	2,394.1
Fort William	4	-	+	2.6	-	+
Oban	2,170	127	1,009	1,125.8	14.4	1,249.3
Luig	-	-	141	-	-	232.6
Tobermory (Mull)	7	-	501	2.4	-	504.8
Loch Scridain (Mull)	20	5	256	6.6	0.6	330.7
Loch Buie (Mull)	-	-	18	-	-	23.1
Coll	-	-	7	-	-	20.8
Tiree	-	-	23	-	-	32.6
CAMPBELTOWN DISTRICT	974	1,947	4,133	410.5	412.4	4,801.1
West Loch Tarbert	62	7	1,637	18.1	0.8	1,920.6
Gigha	-	-	16	-	-	27.7
Port Ellen	11	-	610	5.6	-	778.3
Port Askaig	-	-	-	-	-	-
Bruichladdich	-	-	-	-	-	-
Jura	-	-	2	-	-	10.9
Colonsay	+	-	5	+	-	7.1
Campbeltown	724	196	907	303.4	23.6	898.5
Carradale	39	23	382	16.0	2.7	449.6
Tarbert	139	1,721	558	67.3	385.3	702.4
Ardrishaig	-	-	-	-	-	-
Bute	+	-	+	+	-	0.2
Arran	-	-	16	-	-	5.8
AYR DISTRICT	8,977	2,268	6,000	5,065.8	611.9	4,735.1
Largs & Greenock	353	1	430	175.4	0.2	679.3
Cumraes	-	-	-	-	-	-
Troon & Saltcoats	711	11	364	379.1	2.7	425.1
Ayr	4,602	2,237	1,012	2,410.9	604.8	1,207.8
Dunure	3	-	11	1.3	-	6.9
Maidens	-	-	11	-	-	3.6
Girvan	1,239	19	885	577.3	4.1	898.2
Ballantrae	-	-	14	-	-	5.2
Stranraer	1,421	+	63	1,063.6	+	48.8
Portpatrick	309	+	3	248.3	+	3.0
Drummore	14	-	3	7.1	-	5.5
Whithorn	233	+	56	125.2	+	37.8
Kirkcudbright	93	-	3,137	77.8	-	1,393.2
Annan	-	-	11	-	-	20.7

METHOD OF FISHING BY INDIVIDUAL SPECIES

	Weight (Tonnes)					Value (£'000)				
	Trawl	Lines	Purse Seine	Other Methods	All Methods	Trawl	Lines	Purse Seine	Other Methods	All Methods
DEMERSAL FISH										
Brill	1	-	-	-	1	1	-	-	-	1
Catfish	9	1	-	1	11	5	+	-	1	6
Cod	571	39	-	561	1,171	375	27	-	418	821
Conger eels	-	-	-	-	-	-	-	-	-	-
Dabs	11	-	-	+	11	3	-	-	+	3
Dogfish	18	-	-	9	27	3	-	-	2	5
Dover sole	2	-	-	-	2	6	-	-	-	6
Flounders	-	-	-	-	-	-	-	-	-	-
Gurnards	1	-	-	-	1	+	-	-	-	+
Haddock	233	18	-	14	265	133	13	-	9	155
Hake	11	-	-	9	20	10	-	-	11	22
Halibut	2	1	-	+	3	6	1	-	+	7
Lemon sole	56	-	-	+	56	66	-	-	+	66
Ling	62	8	-	78	148	27	3	-	34	64
Lythe	1	-	-	3	4	+	-	-	1	2
Megrims	9	-	-	1	10	5	-	-	+	5
Monks	125	+	-	3	128	148	+	-	4	152
Norway pout	-	-	-	-	-	-	-	-	-	-
Plaice	321	-	-	1	322	231	-	-	1	232
Redfish	1	-	-	-	1	+	-	-	-	+
Saithe	197	-	-	55	251	64	+	-	15	79
Skate	69	-	-	1	70	19	-	-	+	19
Torsk	+	26	-	1	27	+	9	-	+	9
Turbot	11	-	-	4	15	36	-	-	14	50
Whiting	27	-	-	+	27	10	-	-	+	10
Witches	10	-	-	-	10	5	-	-	-	5
Other demersal	+	-	-	+	+	+	-	-	-	+
Total	1,746	93	-	742	2,581	1,154	52	-	511	1,717
PELAGIC FISH										
Herring	985	-	1,239	-	2,224	54	-	161	-	216
Mackerel	3,809	-	310	-	4,119	275	-	18	-	293
Blue whiting	125	-	-	-	125	4	-	-	-	4
Other Pelagic	589	-	6,650	-	7,239	24	-	334	-	357
Total	5,508	-	8,199	-	13,707	356	-	513	-	870
WET FISH	7,254	93	8,199	742	16,287	1,511	52	513	511	2,587
Edible crabs	+	-	-	-	+	+	-	-	-	+
Norway lobster	31	-	-	-	31	64	-	-	-	64
Scallops	3	-	-	-	3	2	-	-	-	2
Pink shrimps	1,347	-	-	-	1,347	1,271	-	-	-	1,271
Squid	2	-	-	-	2	2	-	-	-	2
Whelks	-	-	-	-	-	-	-	-	-	-
Other shellfish	5	-	-	-	5	1	-	-	-	1
TOTAL OF ALL FISH	8,642	93	8,199	742	17,675	2,852	52	513	511	3,928

LANDINGS IN SCOTLAND BY FOREIGN VESSELS

TABLE 21

CATCHES FROM SPECIFIED ICES AREAS BY INDIVIDUAL SPECIES

TONNES

	North Sea (ICES Area) (IV)	West of Scotland (ICES Area) (VIa)	Rockall (ICES Area) (VIb)	Faroe (ICES Area) (Vb)	Other* Areas	All Areas
DEMERSAL FISH						
Blue ling	-	-	-	-	-	-
Brill	1	+	-	-	-	1
Catfish	10	-	-	+	1	11
Cod	910	30	+	139	93	1,171
Conger eels	-	-	-	-	-	-
Dabs	11	-	-	+	-	11
Dogfish	18	9	+	-	+	27
Dover sole	2	-	-	-	-	2
Flounders	-	-	-	-	-	-
Gurnards	+	+	-	-	-	1
Haddock	163	25	4	59	14	265
Hake	12	8	-	-	+	20
Halibut	1	+	-	1	1	3
Lemon sole	52	+	-	4	-	56
Ling	120	13	1	3	10	148
Lythe	3	1	+	-	-	4
Megrims	6	4	-	-	+	10
Monks	121	7	+	1	+	128
Norway pout	-	-	-	-	-	-
Plaice	313	3	-	+	6	322
Redfish	-	-	-	+	+	1
Saithe	87	20	-	66	79	251
Skate	65	5	+	+	+	70
Torsk	1	-	-	1	25	27
Turbot	14	+	-	+	-	15
Whiting	16	11	-	+	-	27
Witches	10	+	-	-	-	10
Roes	-	-	-	-	-	-
Other demersal	+	-	-	+	-	+
TOTAL	1,935	136	6	275	229	2,581
PELAGIC FISH						
Herring	2,007	217	-	-	-	2,224
Mackerel	-	4,119	-	-	+	4,119
Blue whiting	-	125	-	-	-	125
Other Pelagic	-	-	-	-	6,643	6,643
TOTAL	2,015	5,049	-	-	6,643	13,707
WET FISH	3,950	5,185	6	275	6,872	16,287
Edible crabs	+	-	-	-	-	+
Norway lobsters	26	5	-	-	-	31
Scallops	3	-	-	-	-	3
Pink shrimps	1,347	-	-	-	-	1,347
Squid	-	1	1	-	-	2
Other shellfish	5	-	-	-	-	5
TOTAL ALL FISH	5,331	5,191	7	275	6,872	17,675

*Other Area comprises Iceland (ICES Area Va), East Baltic (ICES Area III d) and West of Great Sole Bank (ICES Area VII k).

NATIONALITY OF VESSEL, PORT OF LANDING AND METHOD OF FISHING

(a) BY FISHING EFFORT

Nationality	Port of landing	Method of fishing	Arrivals	Hours fishing	Days absent
Belgium	Aberdeen	Beam Trawl	27	4,225	237
Total			27	4,225	237
Denmark	Aberdeen	Light Trawl	4	105	11
"	"	Gill Nets	10	607	52
"	"	Purse Seine	11	39	25
"	"	Two Boat Pelagic Trawl	4	11	20
"	Peterhead	Seine Nets	1	80	9
"	"	Industrial Trawl	1	21	10
"	"	Light Trawl	9	472	66
"	"	Gill Nets	8	708	59
"	"	Nephrop Trawl	3	121	20
"	"	Shrimp Trawl	30	1,117	133
"	Fraserburgh	Light Trawl	2	180	16
"	"	Gill Nets	2	-	12
"	"	Two Boat Pelagic Trawl	6	32	28
"	"	Nephrop Trawl	5	392	35
"	"	Shrimp Trawl	7	330	28
"	Buckie	Shrimp Trawl	192	11,267	906
"	Wick	Two Boat Trawl	16	1,282	100
"	"	Industrial Trawl	1	90	13
"	"	Gill Nets	72	6,405	480
"	Shetland	Industrial Trawl	4	191	22
"	"	Light Trawl	3	136	18
Total			391	23,586	2,063
Eire	Stornoway	Industrial Trawl	5	124	18
"	"	Light Trawl	1	40	5
"	"	Two Boat Pelagic Trawl	10	25	25
"	Ullapool	Two Boat Pelagic Trawl	30	151	81
"	Mallaig	Light Trawl	2	44	4
"	Oban	Light Trawl	4	174	11
"	Campbeltown	Nephrop Trawl	6	78	7
Total			58	636	151
Faroe	Aberdeen	Great Lines	1	160	8
"	Fraserburgh	Light Trawl	1	175	13
"	Wick	Two Boat Trawl	2	136	14
"	Shetland	Two Boat Trawl	3	250	34
"	"	Great Lines	1	336	16
"	Ullapool	Purse Seine	1	6	6
Total			9	1,063	91
France	Peterhead	Single Boat Trawl	1	144	12
"	"	Light Trawl	1	180	10
"	Mallaig	Single Boat Trawl	1	176	13
Total			3	500	35
West Germany	Peterhead	Two Boat Trawl	4	192	26
Total			4	192	26
Holland	Peterhead	Shrimp Trawl	1	52	4
"	Fraserburgh	Beam Trawl	1	126	6
"	Buckie	Beam Trawl	2	102	9
Total			4	280	19
Iceland	Fraserburgh	Purse Seine	8	48	43
"	Shetland	Purse Seine	3	164	25
"	Mallaig	Single Boat Trawl	1	240	12
Total			12	452	80
Norway	Shetland	Purse Seine	-	2	-
"	Stornoway	Purse Seine	9	14	25
Total			9	16	25
Total all countries			517	30,950	2,727

NATIONALITY OF VESSEL, PORT OF LANDING AND METHOD OF FISHING

(b) BY WEIGHT AND VALUE

Nationality	Port of landing	Method of fishing	Weight (Tonnes)				Value (£'000)					
			North Sea	West of Scotland	Other Faroe Regions	All Regions	North Sea	West of Scotland	Other Faroe Regions	All Regions		
Belgium	Aberdeen	Beam Trawl	513	-	-	-	513	401	-	-	-	401
Total			513	-	-	-	513	401	-	-	-	401
Denmark	Aberdeen	Light Trawl	5	-	-	-	5	5	-	-	-	5
"	"	Gill Nets	72	-	-	-	72	71	-	-	-	71
"	"	Purse Seine	1,022	-	-	-	1,022	153	-	-	-	153
"	"	Two Boat Pelagic Trawl	189	-	-	-	189	18	-	-	-	18
"	Peterhead	Seine Nets	10	-	-	-	10	8	-	-	-	8
"	"	Industrial Trawl	11	-	-	-	11	6	-	-	-	6
"	"	Light Trawl	47	-	-	-	47	38	-	-	-	38
"	"	Gill Nets	88	-	-	-	88	66	-	-	-	66
"	"	Nephrop Trawl	11	-	-	-	11	12	-	-	-	12
"	"	Shrimp Trawl	122	-	-	-	122	111	-	-	-	111
"	Fraserburgh	Light Trawl	23	-	-	50	73	10	-	-	30	40
"	"	Gill Nets	2	-	-	-	2	5	-	-	-	5
"	"	Two Boat Pelagic Trawl	796	-	-	-	796	36	-	-	-	36
"	"	Nephrop Trawl	18	-	-	-	18	29	-	-	-	29
"	"	Shrimp Trawl	38	-	-	-	38	34	-	-	-	34
"	Buckie	Shrimp Trawl	1,394	-	-	-	1,394	1,301	-	-	-	1,301
"	Wick	Two Boat Trawl	262	-	-	-	262	153	-	-	-	153
"	"	Industrial Trawl	-	4	-	-	4	-	2	-	-	2
"	"	Gill Nets	569	-	-	2	570	361	-	-	1	361
"	Shetland	Industrial Trawl	10	-	-	-	10	3	-	-	-	3
"	"	Light Trawl	41	-	-	-	41	24	-	-	-	24
Total			4,729	4	-	52	4,785	2,443	2	-	31	2,475
Eire	Stornoway	Industrial Trawl	-	714	-	-	714	-	27	-	-	27
"	"	Light Trawl	-	2	-	6	8	-	2	-	4	6
"	"	Two Boat Pelagic Trawl	-	869	-	-	869	-	76	-	-	76
"	Ullapool	Two Boat Pelagic Trawl	-	2,939	-	-	2,939	-	198	-	-	198
"	Mallaig	Light Trawl	-	6	-	-	6	-	2	-	-	2
"	Oban	Light Trawl	-	8	-	-	8	-	4	-	-	4
"	Campbeltown	Nephrop Trawl	-	5	-	-	5	-	4	-	-	4
Total			-	4,543	-	6	4,548	-	313	-	4	318
Faroe	Aberdeen	Great Lines	-	-	31	-	31	-	-	24	-	24
"	Fraserburgh	Light Trawl	-	-	65	-	65	-	-	45	-	45
"	Wick	Two Boat Trawl	-	-	72	-	72	-	-	58	-	58
"	Shetland	Two Boat Trawl	-	-	107	-	107	-	-	44	-	44
"	"	Great Lines	-	-	-	62	62	-	-	-	28	28
"	Ullapool	Purse Seine	-	47	-	-	47	-	2	-	-	2
Total			-	47	275	62	383	-	2	171	28	202
France	Peterhead	Single Boat Trawl	-	32	-	4	36	-	23	-	3	25
"	"	Light Trawl	-	37	-	-	37	-	23	-	-	23
"	Mallaig	Single Boat Trawl	-	48	-	-	48	-	24	-	-	24
Total			-	117	-	4	121	-	70	-	3	72
West Germany	Peterhead	Two Boat Trawl	54	-	-	-	54	25	-	-	-	25
Total			54	-	-	-	54	25	-	-	-	25
Holland	Peterhead	Shrimp Trawl	1	-	-	-	1	1	-	-	-	1
"	Fraserburgh	Beam Trawl	15	-	-	-	15	13	-	-	-	13
"	Buckie	Beam Trawl	11	-	-	-	11	9	-	-	-	9
Total			28	-	-	-	28	24	-	-	-	24
Iceland	Fraserburgh	Purse Seine	-	-	-	5,277	5,277	-	-	-	255	255
"	Shetland	Purse Seine	-	-	-	1,366	1,366	-	-	-	78	78
"	Mallaig	Single Boat Trawl	-	-	-	113	113	-	-	-	54	54
Total			-	-	-	6,755	6,755	-	-	-	387	387
Norway	Shetland	Purse Seine	-	15	-	-	15	-	1	-	-	1
"	Stornoway	Purse Seine	8	465	-	-	473	+	24	-	-	24
Total			8	480	-	-	488	+	25	-	-	25
Total all countries			5,331	5,191	275	6,879	17,675	2,892	411	171	453	3,928

SCOTTISH FISHING VESSELS
NUMBER OF VESSELS BY SIZE

TABLE 23

Vessel Size	1981	1982	1983	1984	1985
Under 30 ft	906	807	800	786	802
30 ft-39.9 ft	382	382	391	398	414
40 ft-59.9 ft	530	514	496	469	461
60 ft-79.9 ft	477	468	467	469	461
80 ft-109.9 ft	51	40	38	35	32
110 ft-139.9 ft	24	22	20	20	21
140 ft and over	-	-	2	3	7
Total all vessels	2,370	2,233	2,214	2,180	2,198

*Of the 60 vessels 80 feet and over in 1985: 14 were trawlers, 1 was a liner, 3 were seiners and 42 were purse seiners.

SCOTTISH FISHING VESSELS
NUMBER OF VESSELS BY SIZE AND BASE DISTRICT

TABLE 24

	Under 30 ft	30 ft- 39.9 ft	40 ft- 59.9 ft	60 ft- 79.9 ft	80 ft- 109.9 ft	110 ft- 139.9 ft	140 ft and Over	Total
East Coast								
TOTAL	317	120	269	381	28	16	2	1,133
Eyemouth	46	42	40	22	1	-	-	151
Pittenweem	62	18	27	21	-	-	-	128
Arbroath	40	10	33	2	-	-	-	85
Aberdeen	9	10	10	22	2	4	-	57
Peterhead	34	6	18	75	9	4	-	146
Fraserburgh	32	10	25	58	9	4	2	140
Macduff	17	5	39	44	7	4	-	116
Buckie	5	1	36	65	-	-	-	107
Lossiemouth	13	3	28	64	-	-	-	108
Wick	59	15	13	8	-	-	-	95
Orkney	57	23	3	12	-	1	1	97
Shetland	62	16	17	26	2	4	4	131
West coast								
TOTAL	366	255	172	42	2	-	-	837
Stornoway	63	59	38	8	1	-	-	169
Kinlochbervie	4	10	5	-	-	-	-	19
Ullapool	18	27	8	4	-	-	-	57
Mallaig	85	55	22	4	1	-	-	167
Oban	97	24	7	1	-	-	-	129
Campbeltown	59	45	51	2	-	-	-	157
Ayr	40	35	41	23	-	-	-	139
ALL DISTRICTS	802	414	461	461	32	21	7	2,198

*Vessels are recorded by base district, but may not necessarily fish from that district.

SCOTTISH FISHING VESSELS
CHANGES IN THE OVER 30' FLEET

TABLE 25

			1981	1982	1983	1984	1985
30'-39.9':	Additions:	New	13	11	7	10	8
		Second hand	33	26	35	40	37
		TOTAL	46	37	42	50	45
	Deletions:	Sunk/Wrecked	7	5	3	3	2
		Sold outside Scotland	3	3	7	5	7
		Ceased fishing/Laid up	25	29	23	35	20
TOTAL	35	37	33	43	29		
40'-79.9':	Additions:	New	21	14	11	16	22
		Second hand	24	17	19	23	25
		TOTAL	45	31	30	39	47
	Deletions:	Sunk/Wrecked	16	14	13	12	12
		Sold outside Scotland	14	28	21	27	28
		Ceased fishing/Laid up	18	14	15	25	23
TOTAL	48	56	49	64	63		
80' and over:	Additions:	New	-	-	-	1	-
		Second hand	2	5	2	3	5
		TOTAL	2	5	2	4	5
	Deletions:	Sunk/Wrecked	1	-	-	-	-
		Sold outside Scotland	3	2	4	2	1
		Ceased fishing/Laid up	6	16	-	4	2
TOTAL	10	18	4	6	3		
All vessels over 30'	Additions:	New	34	25	18	27	30
		Second hand	59	48	56	66	67
		TOTAL	93	73	74	93	97
	Deletions:	Sunk/Wrecked	24	19	16	15	14
		Sold outside Scotland	20	33	32	34	36
		Ceased fishing/Laid up	49	59	38	64	45
TOTAL	93	111	86	113	95		

* 1984 and 1985 figures are provisional

SCOTTISH FISHING VESSELS
NUMBER OF VESSELS BY NORMAL METHOD OF FISHING

TABLE 26

	1981	1982	1983	1984	1985
Demersal Fishing - Total	957	873	840	792	798
Trawl - 80 ft and over	32	17	18	15	14
Under 80 ft*	388	387	366	344	364
Lines	208	147	112	94	83
Seine	308	296	302	291	291
Other Methods	21	26	42	48	46
Pelagic Fishing - Total	79	80	69	68	66
Drift	1	1	1	1	1
Ring	-	-	-	-	-
Purse Seine	43	45	42	44	45
Pelagic Trawl	35	34	26	23	20
Shellfish	1,334	1,280	1,305	1,320	1,334
Nephrops Trawl	303	302	317	337	335
Shrimp Trawl	3	3	2	1	1
TOTAL	2,370	2,233	2,214	2,180	2,198

*Includes light trawl and industrial trawl.

Note: Beam trawl is included in Other Methods Demersal.

FISHERMEN EMPLOYED

TABLE 27

	1981	1982	1983	1984	1985
REGULARLY EMPLOYED	7,376	7,247	7,173	7,198	7,170
PARTIALLY EMPLOYED*	1,085	937	902	902	932
TOTAL REGULARLY AND PARTIALLY EMPLOYED	8,461	8,184	8,075	8,100	8,102

*Includes crofter fishermen numbering 120 in 1981, 94 in 1982, 87 in 1983, 138 in 1984 and 157 in 1985.

SCOTTISH FISHING VESSELS AND FISHERMEN EMPLOYED

TABLE 28

NUMBER OF VESSELS BY BASE DISTRICT

AND NUMBER OF FISHERMEN BY DISTRICT OF RESIDENCE

	Vessels			Fishermen			
	Under 30 ft	30 ft and over	Total	Regularly Employed	Partially Employed	Crofters	Total
East Coast							
TOTAL	317	816	1,133	4,960	396	—	5,356
Eyemouth	46	105	151	507	35	—	542
Pittenweem	62	66	128	382	32	—	414
Arbroath	40	45	85	184	68	—	252
Aberdeen	9	48	57	322	11	—	333
Peterhead	34	112	146	783	34	—	817
Fraserburgh	32	108	140	764	57	—	821
Macduff	17	99	116	652	29	—	681
Buckie	5	102	107	611	19	—	630
Lossiemouth	13	95	108	590	27	—	617
Wick	59	36	95	165	84	—	249
Orkney	57	40	97	189	67	—	256
Shetland	62	69	131	435	35	33	503
West Coast							
TOTAL	366	471	837	1,586	277	124	1,987
Stornoway	63	106	169	299	47	92	438
Kinlochbervie	4	15	19	51	2	—	53
Ullapool	18	39	57	133	10	—	143
Mallaig	85	82	167	258	39	27	324
Oban	97	32	129	123	84	5	212
Campbeltown	59	98	157	320	32	—	352
Ayr	40	99	139	402	63	—	465
ALL DISTRICTS	802	1,396	2,198	7,170	775	157	8,102

DISPOSAL OF SCOTTISH HERRING, MACKEREL AND SPRAT CATCH

TABLE 29

Thousand tonnes

	1981	1982	1983	1984	1985
Herring					
Home Market ⁽¹⁾	8.5	7.9	10.4	12.2	12.0
Klondyked	13.0	16.7	26.2	39.3	54.8
Overland Klondyked	..	0.4	0.4	2.7	1.4
Pet Food	..	0.1	0.7	-	0.4
Oil and Meal	11.1	15.3	13.6	13.6	18.4
Dumped and Bait	-	1.1	+	0.1	+
Total Herring Landings	32.6	41.6	51.4	67.8	86.9
Mackerel					
Home Market ⁽¹⁾	28	21	30	18	18
Klondyked	66	92	80	130	137
Overland Klondyked	..	1	1	+	2
Pet Food	+	+	+	+	+
Oil and Meal	21	16	9	6	15
Dumped and Bait	-	+	+	+	+
Total Mackerel Landings	115	130	120	155	171
Sprat					
Home Market ⁽¹⁾	1	1	2	2	3
Klondyked	+	1	1	+	+
Overland Klondyked	..	-	-	-	-
Pet Food	+	+	-	+	-
Oil and meal	2	+	+	+	+
Dumped and Bait	-	-	-	-	-
Total Sprat Landings	3	1	2	2	3

⁽¹⁾ Home market includes freshening and kippering, curing, redding and marinating, quickfreezing and canning.

RAW MATERIALS USED IN THE PRODUCTION OF FISHERY BY-PRODUCTS

TABLE 30

Thousand tonnes

	1981	1982	1983	1984	1985
Norway pout	-	-	-	3.5	-
Herring	10.6	15.4	13.3	15.9	20.5
Herring offal	4.9	1.0	6.0	7.9	4.8
Sprats	2.5	0.4	+	+	0.4
White fish	56.8	56.8	49.9	1.5	7.4
White fish offal	84.4	85.3	90.0	92.4	106.0
Others (horse mackerel)	-	-	-	0.8	2.9
Mackerel	22.1	13.9	8.3	6.8	18.3
Mackerel offal	-	5.2	0.3	0.2	3.7
Sandeels	-	-	-	39.1	26.2
Capelin	-	-	-	-	7.2
Blue Whiting	-	-	-	-	0.1
Total	181.3	178.0	167.8	168.1	197.6

PRODUCTION OF FISHERY BY-PRODUCTS

TABLE 31

	TONNES (000s)					£(million)				
	1981	1982	1983	1984	1985	1981	1982	1983	1984	1985
Fish meal	34.6	32.9	36.0	32.5	33.1	9.1	8.0	10.9	10.3	9.3
Fish oil	8.2	6.9	6.2	5.6	8.9	1.6	1.2	1.4	1.4	1.9
Pet food	12.8	..	24.7	0.9	..	1.8
Total	42.8	39.8	54.9	38.1	66.7	10.7	9.2	13.1	11.7	13.0

FISH PROCESSED*

TABLE 32

WEIGHT AND VALUE OF FISH PROCESSED ACCORDING TO METHOD OF PROCESS*

	WEIGHT ('000 TONNES)						VALUE (£ MILLION)						
	TOTAL	PROCESSED	DRIED	SMOKED	PICKLED	CANNED	TOTAL	VALUED	DRIED	SMOKED	PICKLED	CANNED	MARINATED
Herring	10.0	-	8.6	0.1	0.1	1.1	8.7	-	7.9	0.1	0.1	0.6	
Mackerel	5.9	-	2.0	+	3.9	-	6.1	-	1.9	+	4.2	-	
Sprats	4.7	-	-	-	4.7	-	6.1	-	-	-	6.1	-	
Cod	1.3	-	1.3	+	-	-	2.5	-	2.5	+	-	-	
Haddock	6.3	-	6.3	-	-	-	11.5	-	11.5	-	-	-	
Ling	0.5	+	0.5	+	-	-	0.5	+	0.5	+	-	-	
Lythe	+	-	+	-	-	-	+	-	+	-	-	-	
Saithe	1.3	-	1.3	-	-	-	1.2	-	1.2	-	-	-	
Torsk	+	-	+	-	-	-	+	-	+	-	-	-	
Whiting	1.1	-	1.1	-	-	-	1.9	-	1.9	-	-	-	
Other Species	-	-	-	-	-	-	-	-	-	-	-	-	
TOTAL	31.0	+	21.1	0.1	8.8	1.1	38.5	+	27.4	0.1	10.5	0.6	

*The weights and values shown in this table are after processing.