

# Statistics Publication Notice



A National Statistics Publication for Scotland  
12<sup>th</sup> September 2012

## **PUBLIC SECTOR EMPLOYMENT IN SCOTLAND STATISTICS FOR 2<sup>nd</sup> QUARTER 2012**

The statistics in this release are based on administrative records and surveys of individual public sector bodies carried out by the Scottish Government and the Office for National Statistics (ONS). The publication includes information on public sector employment in Scotland with distinctions made for employment in devolved bodies and reserved bodies (located in Scotland).

Some of the key points are as follows:  
(based on headcount)

- In Q2 2012 there were 580,100 people employed in the public sector in Scotland, a decrease of 16,700 (2.8%) since Q2 2011.
- There were 2,465,000 people in employment in Scotland in Q2 2012 a decrease of 1.0% from 2,489,000 in Q2 2011. In Q2 2012 public sector employment accounted for 23.5% of total employment, down from 24.0% in Q2 2011 and down from 24.3% in Q2 1999 (In 1999 financial institutions were not included in the public sector).
- Of the total 580,100 people employed in the public sector in Scotland, 487,600 (84%) is accounted for by public sector employment devolved to Scotland and 92,600 (16%) relates to reserved public sector employment.
- Total employment in the devolved public sector has decreased from 499,000 in Q2 2011 to 487,600 in Q2 2012, a decrease of 11,400 (2.3%) over the year. Employment has decreased in all sectors of the devolved public sector.
- The decrease in employment in the devolved public sector has been driven by a decrease in total local government employment decreased by 7,000 (2.4%) over the year to Q2 2012, employment in the NHS decreased by 1,900 (1.2%) and employment in further education colleges decreased by 1,300 (8.2%).

- Employment in the reserved public sector (located in Scotland) has decreased by 5,300 (5.4%) since Q2 2011. Within the reserved public sector the largest changes were for Public Sector Financial Institutions decreasing by 1,800 (5.4%) and the civil service category decreased over the year by 1,700 (5.5%) to 29,400.
  - Within the reserved public sector, this decrease included: Ministry of Defence decreasing by 1,000 (17.4%) and Department for Work and Pensions decreasing by 500 (4.2%).
  - If banks were not included in the series:
    - Total public sector employment would have decreased by slightly less, 14,900 (2.7%), instead of 16,700 (2.8%) over the year.
    - Employment in the reserved public sector in Scotland would have decreased by 3,500 (5.5%) instead of by 5,300 (5.4%) over the year.
- N.B. Financial institutions are not included in the devolved public sector total.

### **Public Sector Employment websection**

In addition to this National Statistics publication, there is also a Public Sector Employment Statistics websection –

<http://www.scotland.gov.uk/Topics/Statistics/Browse/Labour-Market/PublicSectorEmployment>

This contains more detailed information including:

- Employment levels for public bodies in Scotland.
- Local government employment by local authority for the current quarter. A time series of total local government employment back to Q3 1999 shown for: police and related services and fire and related services separately and back to Q1 2011 by gender
- Links to the UK Public Sector Employment Statistical Bulletin (which contains estimates of public sector employment across each government office region) and other related technical papers.
- Detailed tables showing a full time series of data - all quarters back to Q1 1999 – are also available to download.
- Background notes outlining the methodology used to compile this series.

Further methodology details can be found in background notes.

<http://www.scotland.gov.uk/Topics/Statistics/Browse/Labour-Market/PublicSectorEmployment/SourcesDef>

### **Notification of revision in December publication**

We have been carrying out a review of SG Core and Public Bodies in Scotland, as a result of this review there will be some small changes to the definitions used for these parts of the public sector and this will have a small impact on our historical time series.

## 1. Total employment and public and private sector employment in Scotland; Headcount (Table 1)

This section provides a summary of total employment in Scotland and the breakdown of public and private sector employment.

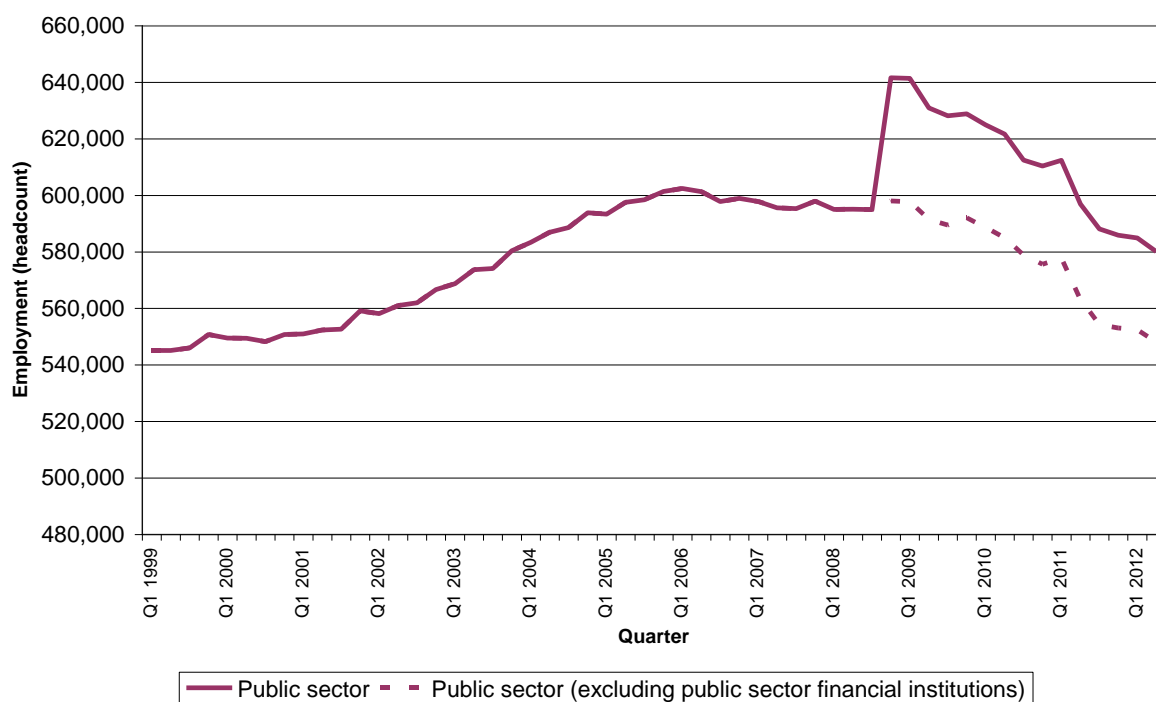
The public sector is defined according to the UK National Accounts Classifications Guide<sup>1</sup>.

In quarter 2 (Q2) 2012, there were 580,100 people employed in the public sector in Scotland. Total public sector employment has decreased by 16,700 (2.8%) since Q2 2011 but increased by 35,000 (6.4%) since Q2 1999.

In the last year total employment has decreased from 2,489,000 in Q2 2011 to 2,465,000 in Q2 2012, a decrease of 23,700 (1.0%). There were 1,884,700 people employed in the private sector in Scotland, a decrease from 1,891,700 in Q2 2011 and an increase from 1,699,600 in Q2 1999.

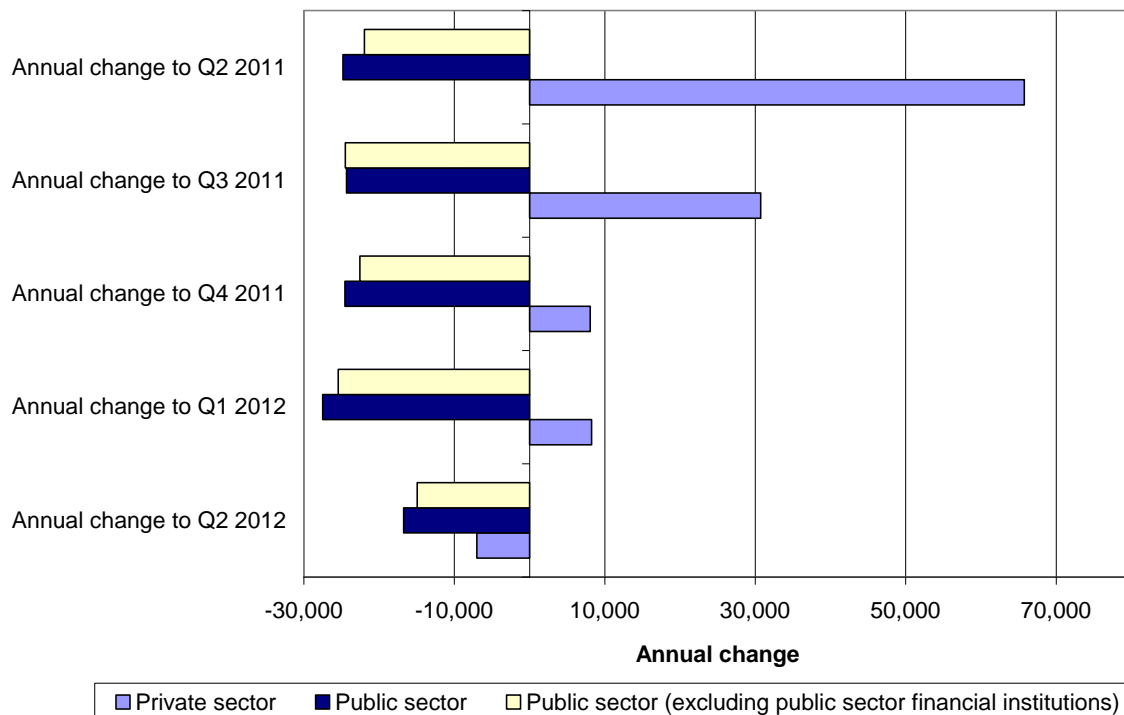
Total public sector employment accounts for 23.5% of total employment in Scotland. This is down from 24.0% in Q2 2011 and down from 24.3% in Q2 1999. (In 1999 the banking sector was not included in the public sector).

**Chart 1: Total Public Sector Employment in Scotland, Headcount, 1999-Q2 2012**



<sup>1</sup> More information on the classification of organisations and institutions in the National Accounts are available in the Sector Classification Guide (MA23): <http://www.ons.gov.uk/ons/publications/reference-tables.html?edition=tc%3A77-224305>

**Chart 2: Annual change in employment by main sector, Headcount**



**Impact of excluding Public Sector Financial Institutions**

If we exclude public sector financial institutions<sup>2</sup> from the series, there would be 548,100 people employed in the public sector, representing 22.2% of total employment in Scotland.

Excluding these banking groups, public sector employment would have decreased by 14,900 (2.7%), instead of 16,700 (2.8%), over the year and public sector employment would have increased by 3,000 (0.5%) since Q2 1999 instead of 35,000 (6.4%).

<sup>2</sup> Public Sector Financial Institutions includes: Royal Bank of Scotland Group plc, Lloyds Banking Group plc and Northern Rock plc.

## 2. Public sector employment by devolved and reserved responsibility; Headcount (Table 3)

This section provides a summary of public sector employment in:

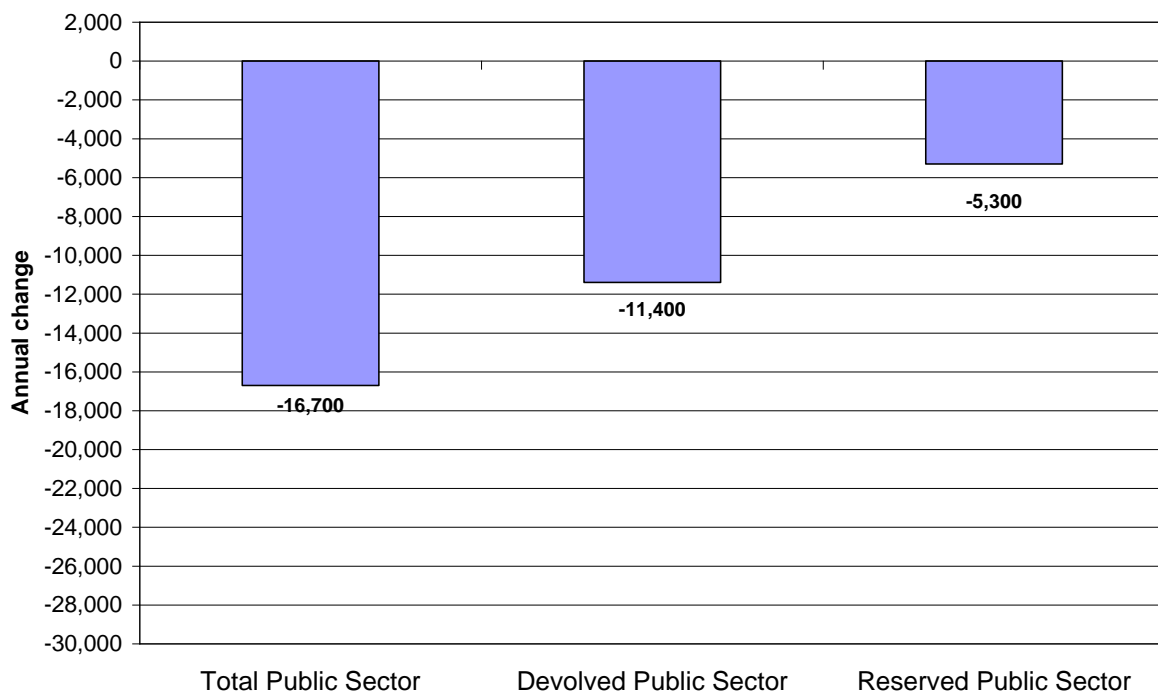
- Devolved public bodies which are the responsibility of the Scottish Government or Scottish Parliament;
- Reserved public bodies for which the UK Government has ministerial responsibility.

Of total public sector employment in Scotland, 487,600 (84%) covers people employed in devolved public bodies. This is a decrease of 11,400 (2.3%), down from 499,000 to 487,600, since Q2 2011. The fall in the last year is driven by a decrease in local government employment, down 7,000 (2.4%), NHS employment has decreased by 1,900 (1.2%) and further education colleges down 1,300 (8.2%)

There were 92,600 (16%) people employed in the reserved public sector in Scotland. This was a decrease of 5,300 (5.4%), down from 97,900 to 92,600, in the last year. Employment in the reserved public sector financial institutions decreased by 1,800 (5.4%) in the last year and the reserved civil service decreased by 1,700 (5.5%).

Overall public sector employment decreased by 16,700 (2.8%), down from 596,900 to 580,100 in the last year. Chart 3 below shows how this is split between devolved and reserved public sector.

**Chart 3: Annual change (from Q2 2011 to Q2 2012) in public sector employment by devolved and reserved responsibility, Headcount**



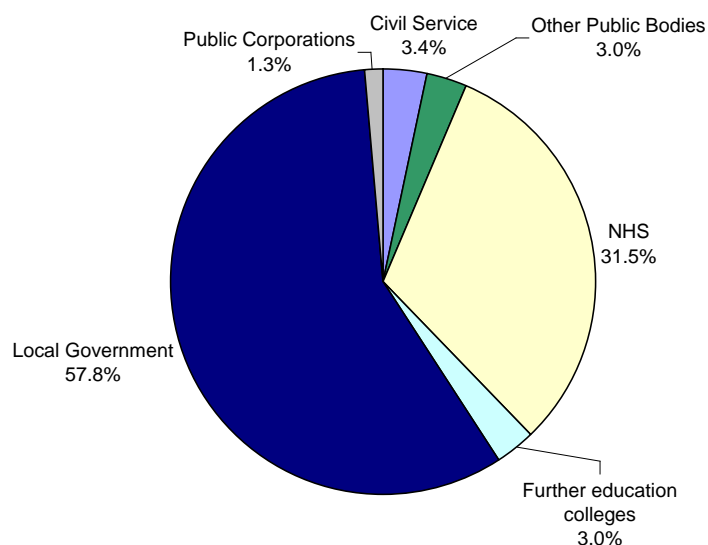
### 3. Devolved public sector employment in Scotland; Headcount (Table 4)

This section provides a summary of devolved public sector employment which includes:

- Devolved Civil Service  
(section 5 has more detailed breakdowns for the devolved civil service)
- Local Government  
(which covers Scottish Local Authorities, Police Forces, Fire Boards, Valuation Joint Boards, Bridge Transport Authorities and Regional Transport Partnerships)
- NHS in Scotland
- Further Education Colleges
- Devolved Public Corporations
- Other Devolved Public Bodies  
(which covers Non-Departmental Bodies and other bodies)

The number of people employed in the devolved public sector decreased by 11,400 (2.3%), falling from 499,000 to 487,600, since Q2 2011. Chart 4 shows the make-up of the devolved civil service as at Q2 2012.

**Chart 4: Breakdown of devolved public sector employment by category, Headcount, Q2 2012**



#### **! Important Caveat**

When interpreting changes over time in devolved public sector employment it should be noted that there has been movement of staff across categories which makes it difficult to monitor changes over time.

Employment in all devolved public sector categories decreased in the last year.

The Q2 2011 publication included Further education colleges in Scotland as part of the devolved public sector for the first time. This followed the ONS re-classification of further education colleges in Scotland to the central government sector for the purpose of National Accounts. The reclassification was backdated to Q1 1999, so the full time series was revised in Q2 2011 to take into account this change.

The number of local government staff (including Scottish Local Authorities, Police Forces, Fire Boards, Valuation Joint Boards, and Regional Transport Partnerships) decreased by 7,000 (2.4%) down from 289,000 (in Q2 2011) to 282,000 (in Q2 2012).

Employment in the NHS decreased by 1,900 (1.2%) over the year, from 155,300 (in Q2 2011) to 153,400 (in Q2 2012). A detailed breakdown on this information by staffing group was published by ISD on the 28<sup>th</sup> of August 2012.

<http://www.isdscotland.org/Health-Topics/Workforce/>

Employment in further Education colleges decreased by 1,300 (8.2%) from 15,900 to 14,600 in Q2 2012.

Annual Employment also decreased in the following two categories:

- Civil Service down by 1,000 (5.4%) to 16,600
- Other Public Bodies down by 300 (1.9%);

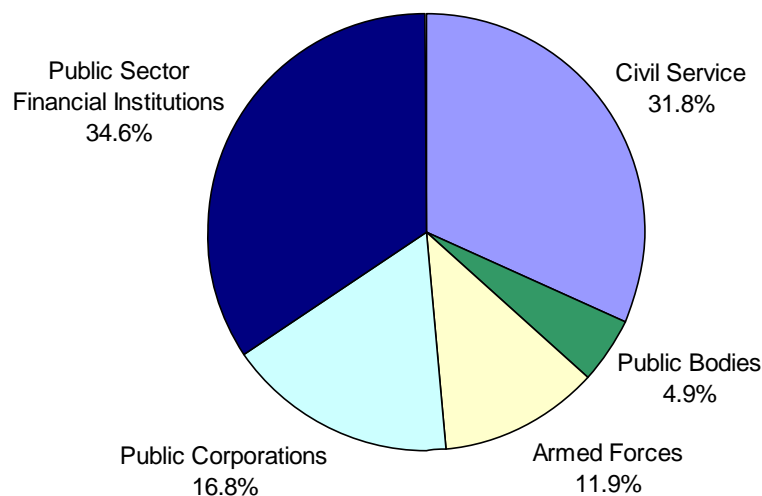
#### 4. Reserved public sector employment in Scotland; Headcount (Table 5)

This section provides a summary of reserved public sector employment which includes:

- Reserved Civil Service (Section 5 has more detailed breakdowns for the reserved civil service)
- Armed Forces
- Reserved Public Corporations
- Public Sector Financial Institutions (which covers Royal Bank of Scotland Group plc, Lloyds Banking Group plc and Northern Rock plc)
- Other Reserved Public Bodies (which covers Non-Departmental Bodies and other bodies)

The number of people employed in the reserved public sector decreased by 5,300 (5.4%) from 97,900 (in Q2 2011) to 92,600. Chart 5 shows the make-up of the reserved civil service as at Q2 2012.

**Chart 5: Breakdown of reserved public sector employment by sector, Headcount, Q2 2012**



Employment levels in all categories of the reserved public sector have decreased in the last year:

- Financial Institutions down by 1,800 (5.4%);
- Civil service decreased down by 1,700 (5.5%);
- Public corporations down by 800 (4.7%);
- Public bodies down by 100 (3.0%);
- Armed forces down by 900 (7.5%).



## 5. Civil Service employment in Scotland; Headcount (Table 6, Table 7)

This section provides a summary of the civil service in Scotland.

The devolved civil service is made up of:

- Scottish Government Core Departments
- Scottish Government Agencies
- Crown Office and Procurator Fiscal Service
- Non-Ministerial Departments

The reserved civil service is made up of:

- UK Government Departments
- Scotland Office

In Q2 2012 there were 46,000 people employed as civil servants in Scotland. This is made up of 16,600 (36%) people working in the devolved civil service and 29,400 (64%) working in UK government departments. The total number of civil servants has decreased by 2,700 (5.5%) over the year from Q2 2011.

### Devolved Civil Service

The devolved civil service has decreased by 1,000 (5.4%) since Q2 2011. Chart 6 shows a breakdown of the devolved civil service in Scotland as at Q2 2012.

### **! Movement of staff between categories within the devolved civil service**

When interpreting changes over time in the devolved civil service in Scotland it should be noted that due to organisational changes, staff have transferred between Scottish Government (SG) departments and agencies. This makes interpreting changes over time complicated.

The SG core departments now include staff who were previously classified as agency staff in 2008 and 2009.

The Scottish Courts Service (previously a SG agency) has been reclassified to a Non-Ministerial Department from 1 April 2010 as has the Scottish Housing Regulator in April 2012.

From 1 April 2011, National Archives for Scotland moved from being a Government Agency to form a new Non-Ministerial Department (National Records of Scotland) as part of a merger with GROS.

More detail about the above changes can be found in the background notes.

<http://www.scotland.gov.uk/Topics/Statistics/Browse/Labour-Market/PublicSectorEmployment/SourcesDef>

## SG Core

In Q2 2012, there were 5,100 people employed in SG core departments, representing 30.7% of the devolved civil service in Scotland. Over the year from Q2 2011, employment in SG core departments has decreased by 300 (4.8%).

## SG Agencies

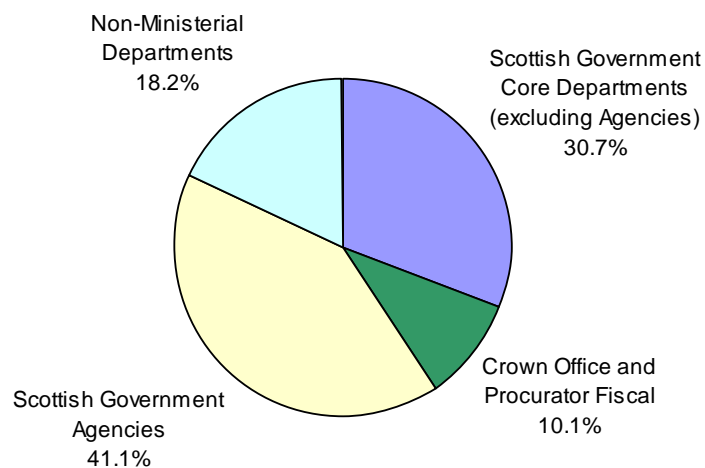
There were 6,800 people employed in Scottish Government agencies in Q2 2012. Employment in SG agencies has increased by 100 people (1.4%) over the year to Q2 2012. From Q4 2011, NHS has responsibility for employing Healthcare staff within prisons. Previously, these people were employed directly by the Scottish Prison Service (SPS), a SG Agency.

## Non Ministerial Departments

Non Ministerial Departments (NMD) include the National Records of Scotland, Registers of Scotland, the Office of the Scottish Charity Regulator the Scottish Courts Service (SCS) and the Scottish Housing Regulator from (April 2012). In Q2 2012, there were 3,000 people employed in these NMDs. Over the year, employment in NMDs decreased by 700 (19.2%).

Employment in the Crown Office & Procurator Fiscal Service decreased by 100 (4.2%) to 1,700 over the year to Q2 2012.

**Chart 6: Breakdown of devolved civil service employment, Scotland, Headcount, Q2 2012**

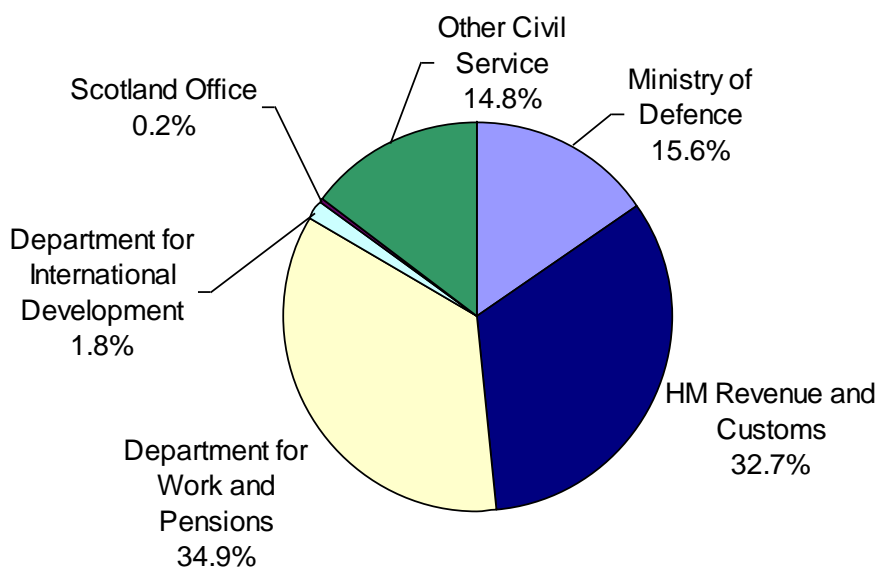


## Reserved Civil Service

The reserved civil service has decreased by 1,700 (5.5%), from 31,100 in Q2 2011 to 29,400 in Q2 2012.

This has been driven by a decrease in Ministry of Defence, down 1000 (17.4%) and a decrease in employment in the Department for Work and Pensions, down 500 (4.2%).

**Chart 7 shows a breakdown of employment in the UK government departments as at Q2 2012.**



## List of Tables

	<i>Page</i>
Table 1: Number of people employed by public and private sector; Scotland, Headcount	13
Table 2: Public sector employment by National Accounts Sector Classification; Scotland, Headcount	14
Table 3: Public sector employment by devolved and reserved sector; Scotland, Headcount and Full-time equivalent	15
Table 4: Total devolved public sector employment by sector; Scotland, Headcount	16
Table 5: Total reserved public sector employment by sector; Scotland, Headcount	17
Table 6: Devolved civil service employment; Scotland, Headcount	18
Table 7: Reserved civil service employment; Scotland, Headcount	19
Table 8: Total devolved public sector employment by sector; Scotland, Full-time equivalent	20
Table 9: Total reserved public sector employment by sector; Scotland, Full-time equivalent	22
Table 10: Devolved civil service employment; Scotland, Full-time equivalent	23
Table 11: Reserved civil service employment; Scotland, Full-time equivalent	24

These tables include comparisons for Q1 in 1999 and 2006 to 2012 only. A complete time series, including all quarters back to Q1 1999 is provided in the excel spreadsheets published at the public sector employment web section <http://www.scotland.gov.uk/Topics/Statistics/Browse/Labour-Market/PublicSectorEmployment>

## Background Notes

Background notes about the information contained in our PSE series are available at the following web section: <http://www.scotland.gov.uk/Topics/Statistics/Browse/Labour-Market/PublicSectorEmployment/SourcesDef>

Next Publication: 12<sup>th</sup> December 2012

**Table 1: Number of people employed by public and private sector; Scotland, Headcount**  
*Not Seasonally Adjusted*

	Total Employment	Private Sector		Public Sector		Public Sector Excluding public sector financial institutions	
	Level	Level	Percentage of total employment	Level	Percentage of total employment	Level	Percentage of total employment
Q2 1999	2,245,000	1,699,600	75.7%	<b>545,100</b>	<b>24.3%</b>	545,100	24.3%
Q2 2006	2,467,000	1,865,600	75.6%	<b>601,300</b>	<b>24.4%</b>	601,300	24.4%
Q2 2007	2,553,000	1,957,000	76.7%	<b>595,600</b>	<b>23.3%</b>	595,600	23.3%
Q2 2008	2,536,000	1,941,000	76.5%	<b>595,100</b>	<b>23.5%</b>	595,100	23.5%
Q2 2009	2,480,000	1,849,500	74.6%	<b>630,900</b>	<b>25.4%</b>	591,400	23.8%
Q2 2010	2,448,000	1,825,900	74.6%	<b>621,700</b>	<b>25.4%</b>	585,000	23.9%
Q2 2011	2,489,000	1,891,700	76.0%	<b>596,900</b>	<b>24.0%</b>	563,100	22.6%
Q2 2012	2,465,000	1,884,700	76.5%	<b>580,100</b>	<b>23.5%</b>	548,100	22.2%
<b>Change on year to:</b>							
Q2 2012	-23,700	-7,000		-16,700		-14,900	
<b>% change on year:</b>							
Q2 2012	-1.0%	-0.4%		-2.8%		-2.7%	

Notes:

1. Figures have been rounded to the nearest hundred. Total employment has been rounded to the nearest thousand.
2. Public sector financial institutions include Northern Rock (classified to the public sector from Q4 2007), Royal Bank of Scotland Group plc and Lloyds Banking Group plc (both classified to the public sector from Q4 2008).

Detailed tables showing a full time series of data - all quarters back to Q1 1999 – are available to download from the Public Sector Employment Websection:

<http://www.scotland.gov.uk/Topics/Statistics/Browse/Labour-Market/PublicSectorEmployment>

**Table 2: Public sector employment by National Accounts Sector Classification; Scotland, Headcount**  
*Not Seasonally Adjusted*

	National Accounts Central Government Category									
	Total Public Sector	Civil Service	Other Public Bodies	NHS	Armed Forces	Further Education Colleges	Total Central Government	Local Government	Public Corporations	Public Sector Financial Institutions
Q2 1999	<b>545,100</b>	48,500	13,600	129,100	14,900	15,700	221,800	293,500	29,900	
Q2 2006	<b>601,300</b>	52,800	18,600	148,300	12,900	16,600	249,200	323,700	28,400	
Q2 2007	<b>595,600</b>	50,600	19,800	152,700	12,400	16,700	252,300	318,100	25,200	
Q2 2008	<b>595,100</b>	49,600	21,800	155,200	12,100	16,900	255,600	313,700	25,800	
Q2 2009	<b>630,900</b>	51,100	21,600	159,300	12,000	16,900	260,800	306,300	24,400	39,500
Q2 2010	<b>621,700</b>	50,100	20,800	160,100	12,200	16,000	259,300	301,900	23,800	36,700
Q2 2011	<b>596,900</b>	48,700	19,500	155,300	11,900	15,900	251,300	289,000	22,700	33,800
Q2 2012	<b>580,100</b>	46,000	19,000	153,400	11,000	14,600	244,100	282,000	22,000	32,000
<b>Change on year to:</b>										
Q2 2012	-16,700	-2,700	-400	-1,900	-900	-1,300	-7,200	-7,000	-700	-1,800
<b>% change on year:</b>										
Q2 2012	-2.8%	-5.5%	-2.2%	-1.2%	-7.5%	-8.2%	-2.9%	-2.4%	-3.2%	-5.4%

Notes:

1. Figures have been rounded to the nearest hundred.
2. Public sector financial institutions include Northern Rock (classified to the public sector from Q4 2007), Royal Bank of Scotland Group plc and Lloyds Banking Group plc (both classified to the public sector from Q4 2008).
3. Local Government category revised to include Strathclyde Partnership for Transport (SPT) following a review by the National Accounts Classifications Team at ONS.
4. A number of local government staff have transferred to arms length organisations which are part of the private sector under National Accounts definitions. For example, staff transferred from Glasgow City Council to Cordia Limited Liability Partnership from 1 April 2009 thus explaining the decrease in local government employment between 2008 and 2009.
5. Information for further education colleges in Scotland is based on actual information from Q4 2010. The method used to create the back series is detailed in the background notes of this publication.
6. From Q4 2011, NHS has responsibility for employing Healthcare staff within prisons. Previously, these people were employed directly by the Scottish Prison Service (SPS).

Detailed tables showing a full time series of data - all quarters back to Q1 1999 – are available to download from the Public Sector Employment Websection:

<http://www.scotland.gov.uk/Topics/Statistics/Browse/Labour-Market/PublicSectorEmployment>

**Table 3: Public sector employment by devolved and reserved sector; Scotland, Headcount and Full-time equivalent**  
*Not Seasonally Adjusted*

	Headcount			Full-time equivalent		
	Total Public Sector	Devolved Public Sector	Reserved Public Sector	Total Public Sector	Devolved Public Sector	Reserved Public Sector
Q2 1999	545,100	470,900	74,300	455,600	384,700	70,900
Q2 2006	601,300	524,300	77,000	506,700	434,000	72,800
Q2 2007	595,600	524,900	70,700	502,100	435,500	66,500
Q2 2008	595,100	525,400	69,700	504,300	438,900	65,400
Q2 2009	630,900	522,100	108,900	539,900	438,500	101,400
Q2 2010	621,700	517,900	103,800	531,100	434,500	96,600
Q2 2011	596,900	499,000	97,900	510,000	419,200	90,800
Q2 2012	580,100	487,600	92,600	496,600	410,900	85,600
<b>Change on year to:</b>						
Q2 2012	-16,700	-11,400	-5,300	-13,500	-8,300	-5,200
<b>% change on year:</b>						
Q2 2012	-2.8%	-2.3%	-5.4%	-2.6%	-2.0%	-5.7%

Notes:

1. Figures have been rounded to the nearest hundred.

2. Devolved Public Sector consists of the following staff groups: Civil Service, Other public Bodies, NHS, Further Education Colleges, Local Government and Public Corporations. (as shown in Table 4)

Reserved Public Sector consists of the following staff groups: Civil Service, Public Bodies, Armed Forces, Public Corporations, Public Sector Financial Institutions (as shown in Table 5)

3. Northern Rock classified to public sector from Q4 2007. Royal Bank of Scotland Group plc and Lloyds Banking Group plc classified to the public sector from Q4 2008.

Detailed tables showing a full time series of data - all quarters back to Q1 1999 – are available to download from the Public Sector Employment Websection:

<http://www.scotland.gov.uk/Topics/Statistics/Browse/Labour-Market/PublicSectorEmployment>

**Table 4: Total devolved public sector employment by sector; Scotland, Headcount**  
*Not Seasonally Adjusted*

	<b>Total Devolved Public Sector</b>	<b>Civil Service</b>	<b>Other Public Bodies</b>	<b>NHS</b>	<b>Further education colleges</b>	<b>Local Government</b>	<b>Public Corporations</b>
Q2 1999	<b>470,900</b>	14,600	8,500	129,100	15,700	293,500	9,500
Q2 2006	<b>524,300</b>	16,800	12,200	148,300	16,600	323,700	6,600
Q2 2007	<b>524,900</b>	16,700	13,800	152,700	16,700	318,100	6,800
Q2 2008	<b>525,400</b>	17,000	15,800	155,200	16,900	313,700	6,800
Q2 2009	<b>522,100</b>	17,500	15,800	159,300	16,900	306,300	6,300
Q2 2010	<b>517,900</b>	17,700	15,800	160,100	16,000	301,900	6,400
Q2 2011	<b>499,000</b>	17,500	14,800	155,300	15,900	289,000	6,400
Q2 2012	<b>487,600</b>	16,600	14,500	153,400	14,600	282,000	6,500
<b>Change on year to:</b>							
Q2 2012	-11,400	-1,000	-300	-1,900	-1,300	-7,000	0
<b>% change on year:</b>							
Q2 2012	-2.3%	-5.4%	-1.9%	-1.2%	-8.2%	-2.4%	0.7%

Notes:

1. Figures have been rounded to the nearest hundred.
2. Local Government category revised to include Strathclyde Partnership for Transport (SPT) following a review by the National Accounts Classifications Team at ONS.
3. A number of local government staff have transferred to arms length organisations which are part of the private sector under National Accounts definitions. For example, staff transferred from Glasgow City Council to Cordia Limited Liability Partnership from 1 April 2009 thus explaining the decrease in local government employment between 2008 and 2009.
4. Staff from Local Authority District Courts and Police Authorities have transferred into the Devolved Civil Service since 2007.
5. Information for further education colleges in Scotland is based on actual information from Q4 2010. The method used to create the back series is detailed in the background notes of this publication.
6. From Q4 2011, NHS has responsibility for employing Healthcare staff within prisons. Previously, these people were employed directly by the Scottish Prison Service (SPS).
7. Where the change on the year is less than 50 this rounds to '0'

Detailed tables showing a full time series of data - all quarters back to Q1 1999 – are available to download from the Public Sector Employment Websection:

<http://www.scotland.gov.uk/Topics/Statistics/Browse/Labour-Market/PublicSectorEmployment>



**Table 5: Total reserved public sector employment by sector; Scotland, Headcount**  
*Not Seasonally Adjusted*

	<b>Total Reserved Public Sector</b>	<b>Civil Service</b>	<b>Public Bodies</b>	<b>Armed Forces</b>	<b>Public Corporations</b>	<b>Public Sector Financial Institutions</b>
Q2 1999	<b>74,300</b>	33,800	5,100	14,900	20,400	
Q2 2006	<b>77,000</b>	36,000	6,300	12,900	21,700	
Q2 2007	<b>70,700</b>	33,900	6,100	12,400	18,400	
Q2 2008	<b>69,700</b>	32,600	6,000	12,100	19,000	
Q2 2009	<b>108,900</b>	33,600	5,800	12,000	18,000	39,500
Q2 2010	<b>103,800</b>	32,400	5,100	12,200	17,400	36,700
Q2 2011	<b>97,900</b>	31,100	4,700	11,900	16,300	33,800
Q2 2012	<b>92,600</b>	29,400	4,600	11,000	15,500	32,000
<b>Change on year to:</b>						
Q2 2012	-5,300	-1,700	-100	-900	-800	-1,800
<b>% change on year:</b>						
Q2 2012	-5.4%	-5.5%	-3.0%	-7.5%	-4.7%	-5.4%

Notes:

1. Figures have been rounded to the nearest hundred.
2. Public sector financial institutions include Northern Rock (classified to the public sector from Q4 2007), Royal Bank of Scotland Group plc and Lloyds Banking Group plc (both classified to the public sector from Q4 2008).
3. Where the change on the year is less than 50 this rounds to '0'

Detailed tables showing a full time series of data - all quarters back to Q1 1999 – are available to download from the Public Sector Employment Websection:

<http://www.scotland.gov.uk/Topics/Statistics/Browse/Labour-Market/PublicSectorEmployment>

**Table 6: Devolved civil service employment; Scotland, Headcount**  
*Not Seasonally Adjusted*

	Devolved Civil Service				
	Total Devolved Civil Service	Scottish Government Core Directorates (excluding Agencies)	Crown Office and Procurator Fiscal	Scottish Government Agencies	Non-Ministerial Departments
Q2 2006	<b>16,800</b>	4,500	1,600	8,900	1,800
Q2 2007	<b>16,700</b>	4,300	1,600	9,100	1,700
Q2 2008	<b>17,000</b>	4,900	1,700	8,600	1,800
Q2 2009	<b>17,500</b>	5,700	1,800	8,200	1,800
Q2 2010	<b>17,700</b>	5,700	1,800	6,800	3,400
Q2 2011	<b>17,500</b>	5,400	1,700	6,700	3,700
Q2 2012	<b>16,600</b>	5,100	1,700	6,800	3,000
<b>Change on year to:</b>					
Q2 2012	-1,000	-300	-100	100	-700
<b>% change on year:</b>					
Q2 2012	-5.4%	-4.8%	-4.2%	1.4%	-19.2%

Notes:

1. Figures have been rounded to the nearest hundred.
2. Since Q2 2008, six Government Agencies have been absorbed into the Scottish Government Core Departments. Further details are provided in the background notes.
3. From Q2 2010, the Scottish Court Service was reclassified from Government Agency to Non-Ministerial Department.
4. Staff from Local Authority District Courts and Police Authorities have transferred into the Devolved Civil Service since 2007.
5. From Q4 2011, NHS has responsibility for employing Healthcare staff within prisons. Previously, these people were employed directly by the Scottish Prison Service (SPS).
6. Where the change on the year is less than 50 this rounds to '0'

**Table 7: Reserved civil service employment; Scotland, Headcount**  
*Not Seasonally Adjusted*

	Reserved Civil Service						
	Total Reserved Civil Service	Ministry of Defence	HM Revenue and Customs	Department for Work and Pensions	Department for International Development	Scotland Office	Other Civil Service
Q2 2006	<b>36,000</b>	7,000	11,700	13,800	600	50	2,900
Q2 2007	<b>33,900</b>	6,600	11,200	12,700	500	60	2,800
Q2 2008	<b>32,600</b>	6,100	10,900	12,300	500	60	2,800
Q2 2009	<b>33,600</b>	6,000	10,900	11,800	500	70	4,400
Q2 2010	<b>32,400</b>	5,900	9,800	12,000	500	70	4,200
Q2 2011	<b>31,100</b>	5,600	10,000	10,700	500	70	4,300
Q2 2012	<b>29,400</b>	4,600	9,600	10,300	500	70	4,300
<b>Change on year to:</b>							
Q2 2012	-1,700	-1,000	-400	-500	0	0	0
<b>% change on year:</b>							
Q2 2012	-5.5%	-17.4%	-3.5%	-4.2%	5.3%	0.0%	1.0%

Notes:

1. Figures have been rounded to the nearest hundred, with the exception of the Scotland Office figures which are rounded to the nearest ten.
2. Staff, previously employed in the Child Support Agency within DWP have transferred to the new Child Maintenance and Enforcement Commission (CMEC) from Q4 2008. CMEC is a Non-Departmental Public Body. However, CMEC staff are included in the 'Other Civil Service' category as staff have retained their civil service contracts.
3. Where the change on the year is less than 50 this rounds to '0'

Detailed tables showing a full time series of data - all quarters back to Q1 1999 – are available to download from the Public Sector Employment Websection: <http://www.scotland.gov.uk/Topics/Statistics/Browse/Labour-Market/PublicSectorEmployment>

**Table 8: Total devolved public sector employment by sector; Scotland, Full-time equivalent**  
*Not Seasonally Adjusted*

	<b>Total Devolved Public Sector</b>	<b>Civil Service</b>	<b>Other Public Bodies</b>	<b>NHS</b>	<b>Further Education Colleges</b>	<b>Local Government</b>	<b>Public Corporations</b>
Q2 1999	<b>384,700</b>	14,100	7,800	106,200	11,500	235,800	9,200
Q2 2006	<b>434,000</b>	16,100	11,300	125,600	12,200	262,400	6,400
Q2 2007	<b>435,500</b>	16,000	12,700	129,700	12,200	258,500	6,500
Q2 2008	<b>438,900</b>	16,200	14,600	132,000	12,400	257,200	6,500
Q2 2009	<b>438,500</b>	16,700	14,600	135,500	12,300	253,400	6,000
Q2 2010	<b>434,500</b>	16,800	14,200	136,100	11,700	249,700	6,000
Q2 2011	<b>419,200</b>	16,300	13,600	131,900	11,900	239,400	6,200
Q2 2012	<b>410,900</b>	15,800	13,300	130,400	11,000	234,400	6,100
<b>Change on year to:</b>							
Q2 2012	-8,300	-500	-300	-1,600	-900	-5,000	0
<b>% change on year:</b>							
Q2 2012	-2.0%	-3.3%	-2.2%	-1.2%	-7.5%	-2.1%	-0.2%

Notes:

1. Figures have been rounded to the nearest hundred.
2. Local Government category revised to include Strathclyde Partnership for Transport (SPT) following a review by the National Accounts Classifications Team at ONS.
3. A number of local government staff have transferred to arms length organisations which are part of the private sector under National Accounts definitions. For example, staff transferred from Glasgow City Council to Cordia Limited Liability Partnership from 1 April 2009 thus explaining the decrease in local government employment between 2008 and 2009.
4. Staff from Local Authority District Courts and Police Authorities have transferred into the Devolved Civil Service since 2007.
5. Information for further education colleges in Scotland is based on actual information from Q4 2010. The method used to create the back series is detailed in the background notes of this publication.
6. From Q4 2011, NHS has responsibility for employing Healthcare staff within prisons. Previously, these people were employed directly by the Scottish Prison Service (SPS).

Detailed tables showing a full time series of data - all quarters back to Q1 1999 – are available to download from the Public Sector Employment Websection:

<http://www.scotland.gov.uk/Topics/Statistics/Browse/Labour-Market/PublicSectorEmployment>

**Table 9: Total reserved public sector employment by sector; Scotland, Full-time equivalent**  
*Not Seasonally Adjusted*

	<b>Total Reserved Public Sector</b>	<b>Civil Service</b>	<b>Public Bodies</b>	<b>Armed Forces</b>	<b>Public Corporations</b>	<b>Public Sector Financial Institutions</b>
Q2 1999	<b>70,900</b>	32,000	4,800	14,900	19,100	
Q2 2006	<b>72,800</b>	33,600	6,100	12,900	20,200	
Q2 2007	<b>66,500</b>	31,600	5,600	12,400	17,000	
Q2 2008	<b>65,400</b>	30,400	5,500	12,100	17,500	
Q2 2009	<b>101,400</b>	31,200	5,500	12,000	16,500	36,300
Q2 2010	<b>96,600</b>	29,900	4,800	12,200	16,000	33,700
Q2 2011	<b>90,800</b>	28,500	4,400	11,900	14,900	31,100
Q2 2012	<b>85,600</b>	26,700	4,300	11,000	14,200	29,400
<b>Change on year to:</b>						
Q2 2012	-5,200	-1,800	-100	-900	-700	-1,700
<b>% change on year:</b>						
Q2 2012	-5.7%	-6.3%	-2.0%	-7.5%	-4.4%	-5.5%

Notes:

1. Figures have been rounded to the nearest hundred.
2. Public sector financial institutions include Northern Rock (classified to the public sector from Q4 2007), Royal Bank of Scotland Group plc and Lloyds Banking Group plc (both classified to the public sector from Q4 2008).
3. Where the change on the year is less than 50 this rounds to '0'

Detailed tables showing a full time series of data - all quarters back to Q1 1999 – are available to download from the Public Sector Employment Websection:

<http://www.scotland.gov.uk/Topics/Statistics/Browse/Labour-Market/PublicSectorEmployment>

**Table 10: Devolved civil service employment; Scotland, Full-time equivalent**  
*Not Seasonally Adjusted*

	<b>Devolved Civil Service</b>				
	<b>Total Devolved Civil Service</b>	<b>Scottish Government Core Directorates (excluding Agencies)</b>	<b>Crown Office and Procurator Fiscal</b>	<b>Scottish Government Agencies</b>	<b>Non-Ministerial Departments</b>
Q2 2006	<b>16,100</b>	4,300	1,500	8,600	1,700
Q2 2007	<b>16,000</b>	4,100	1,600	8,700	1,600
Q2 2008	<b>16,200</b>	4,700	1,600	8,300	1,700
Q2 2009	<b>16,700</b>	5,400	1,700	7,900	1,700
Q2 2010	<b>16,800</b>	5,400	1,700	6,500	3,100
Q2 2011	<b>16,300</b>	5,100	1,600	6,500	3,100
Q2 2012	<b>15,800</b>	4,900	1,500	6,500	2,800
<b>Change on year to:</b>					
Q2 2012	-500	-200	-100	100	-300
<b>% change on year:</b>					
Q2 2012	-3.3%	-4.6%	-5.0%	1.4%	-10.2%

Notes:

1. Figures have been rounded to the nearest hundred.
2. Since Q2 2008, six Government Agencies have been absorbed into the Scottish Government Core Departments. Further details are provided in the background notes.
3. From Q2 2010, the Scottish Court Service was reclassified from Government Agency to Non-Ministerial Department.
4. Staff from Local Authority District Courts and Police Authorities have transferred into the Devolved Civil Service since 2007.
5. From Q4 2011, NHS has responsibility for employing Healthcare staff within prisons. Previously, these people were employed directly by the Scottish Prison Service (SPS).
6. Where the change on the year is less than 50 this rounds to '0'

Detailed tables showing a full time series of data - all quarters back to Q1 1999 – are available to download from the Public Sector Employment Websection:

<http://www.scotland.gov.uk/Topics/Statistics/Browse/Labour-Market/PublicSectorEmployment>

**Table 11: Reserved civil service employment; Scotland, Full-time equivalent**  
*Not Seasonally Adjusted*

	Reserved Civil Service						
	Total Reserved Civil Service	Ministry of Defence	HM Revenue and Customs	Department for Work and Pensions	Department for International Development	Scotland Office	Other Civil Service
Q2 2006	<b>33,600</b>	6,800	10,800	12,700	500	50	2,700
Q2 2007	<b>31,600</b>	6,400	10,400	11,600	500	50	2,700
Q2 2008	<b>30,400</b>	5,900	10,000	11,200	500	60	2,700
Q2 2009	<b>31,200</b>	5,800	9,900	10,900	500	70	4,100
Q2 2010	<b>29,900</b>	5,700	8,800	10,900	400	70	4,000
Q2 2011	<b>28,500</b>	5,400	8,900	9,700	500	70	4,000
Q2 2012	<b>26,700</b>	4,500	8,400	9,200	500	70	4,000
<b>Change on year to:</b>							
Q2 2012	-1,800	-900	-500	-400	0	0	0
<b>% change on year:</b>							
Q2 2012	-6.3%	-17.2%	-5.5%	-4.6%	5.4%	0.0%	0.8%

Notes:

1. Figures have been rounded to the nearest hundred, with the exception of the Scotland Office figures which are rounded to the nearest ten.
2. Staff, previously employed in the Child Support Agency within DWP have transferred to the new Child Maintenance and Enforcement Commission (CMEC) from Q4 2008. CMEC is a Non-Departmental Public Body. However, CMEC staff are included in the 'Other Civil Service' category as staff have retained their civil service contracts.
3. Where the change on the year is less than 50 this rounds to '0'

Detailed tables showing a full time series of data - all quarters back to Q1 1999 – are available to download from the Public Sector Employment Websection:  
<http://www.scotland.gov.uk/Topics/Statistics/Browse/Labour-Market/PublicSectorEmployment>

## A NATIONAL STATISTICS PUBLICATION FOR SCOTLAND

Official and National Statistics are produced to high professional standards set out in the Code of Practice for Official Statistics at <http://www.statisticsauthority.gov.uk/assessment/code-of-practice/code-of-practice-for-official-statistics.pdf>. Both undergo regular quality assurance reviews to ensure that they meet customer needs and are produced free from any political interference.

The United Kingdom Statistics Authority has designated these statistics as National Statistics, in accordance with the Statistics and Registration Service Act 2007 and signifying compliance with the Code of Practice for Official Statistics.

Designation can be broadly interpreted to mean that the statistics:

- meet identified user needs;
- are well explained and readily accessible;
- are produced according to sound methods, and
- are managed impartially and objectively in the public interest.

Once statistics have been designated as National Statistics it is a statutory requirement that the Code of Practice shall continue to be observed.

Further information about Official and National Statistics can be found on the UK Statistics Authority website at [www.statisticsauthority.gov.uk](http://www.statisticsauthority.gov.uk)

## SCOTTISH GOVERNMENT STATISTICIAN GROUP

### Our Aim

To provide relevant and reliable information, analysis and advice that meet the needs of government, business and the people of Scotland.

For more information on the Statistician Group, please see the Scottish Government website at [www.scotland.gov.uk/statistics](http://www.scotland.gov.uk/statistics)

### Correspondence and enquiries

Enquiries on this publication should be addressed to:

Sian Rasdale  
Education Analytical Services  
Scottish Government  
5<sup>th</sup> Floor, 5 Atlantic Quay  
GLASGOW G2 8LU  
Telephone: (0300) 244 6783;  
e-mail: [labour-market.statistics@scotland.gsi.gov.uk](mailto:labour-market.statistics@scotland.gsi.gov.uk)

General enquiries on Scottish Government statistics can be addressed to:

Office of the Chief Statistician  
Scottish Government  
4N.06, St Andrews House  
EDINBURGH EH1 3DG  
Telephone: (0131) 244 0442  
e-mail: [statistics.enquiries@scotland.gsi.gov.uk](mailto:statistics.enquiries@scotland.gsi.gov.uk)

### Media enquiries contact:

Karen MacKinnon 0131 244 2175

Further contact details, e-mail addresses and details of previous and forthcoming publications can be found on the Scottish Government Website at [www.scotland.gov.uk/statistics](http://www.scotland.gov.uk/statistics)

### Complaints and suggestions

If you are not satisfied with our service, please write to the Chief Statistician, 4N.06, St Andrews House, Edinburgh, EH1 3DG, Telephone: (0131) 244 0302, e-mail [Chiefstatistician@scotland.gsi.gov.uk](mailto:Chiefstatistician@scotland.gsi.gov.uk). We also welcome any comments or suggestions that would help us to improve our standards of service.

### ScotStat

If you would like to be consulted about new or existing statistical collections or receive notification of forthcoming statistical publications, please register your interest on the Scottish Government ScotStat website at [www.scotland.gov.uk/scotstat](http://www.scotland.gov.uk/scotstat)

### Crown Copyright

Brief extracts from the Crown Copyright material in this publication may be reproduced provided the source is fully acknowledged.

ISBN: 978-1-78256-052-4

APS Group Scotland  
DPPAS13382 (09/12)