

Statistics Publication Notice



A National Statistics Publication for Scotland
20th June 2012

PUBLIC SECTOR EMPLOYMENT IN SCOTLAND STATISTICS FOR 1st QUARTER 2012

The statistics in this release are based on administrative records and surveys of individual public sector bodies carried out by the Scottish Government and the Office for National Statistics (ONS). The publication includes information on public sector employment in Scotland with distinctions made for employment in devolved bodies and reserved bodies (located in Scotland).

Some of the key points are as follows: (based on headcount)

- In Q1 2012 there were **584,800** people employed in the **public sector in Scotland**, a decrease of 27,600 (4.5%) since Q1 2011.
- There were 2,453,000 people **in employment in Scotland** in Q1 2012 a decrease of 0.8% from 2,472,000 in Q1 2011. In Q1 **2012 public sector employment** accounted for 23.8% of total employment, down from 24.8% in Q1 2011 and down from 24.5% in Q1 1999 (In 1999 financial institutions were not included in the public sector).
- Of the total 584,800 people employed in the public sector in Scotland, 491,100 (84%) is accounted for by public sector employment **devolved to Scotland** and 93,700 (16 %) relates to **reserved public sector employment**.
- Total employment in the **devolved public sector** has decreased from 512,800 in Q1 2011 to 491,100 in Q1 2012, a decrease of 21,700 (4.2%) over the year. This has been driven by a decrease in local government employment and the civil service.
- Total **local government employment** decreased by 10,000 (3.4%) over the year to Q1 2012. Employment in the Civil Service decreased by 7,400 (30.9%). This is because in Q1 2011 employment in the Civil Service was significantly higher than usual due to the employment of 6,700 temporary census staff. If the census

staff had not been included in Q1 2011 then employment would have decreased only by 700 (4.2%). Number of NHS staff decreased by 2,500 1.6%.

- Employment in the **reserved public sector** (located in Scotland) has decreased by 5,900 (5.9%) since Q1 2011. This is largely due to employment in Public Sector Financial Institutions (part of the reserved public sector) decreasing in the last year by 2,100 (6.1%).
- Within the **reserved public sector**, the civil service category decreased over the year by 1,700 (5.4%) to 29,900. This decrease included: Ministry of Defence decreasing by 900 (15.4%) and Department for Work and Pensions decreasing by 800 (7.1 %).
- If banks were not included in the series:
 - Total public sector employment would have decreased by slightly less, 25,500 (4.4%), instead of 27,600 (4.5%) over the year.
 - Employment in the reserved public sector in Scotland would have decreased by 3,800 (5.8%) instead of by 5,900 (5.9%) over the year.

N.B. Financial institutions are not included in the devolved public sector total.

Public Sector Employment websection

In addition to this National Statistics publication, there is also a Public Sector Employment Statistics websection –

<http://www.scotland.gov.uk/Topics/Statistics/Browse/Labour-Market/PublicSectorEmployment>

This contains more detailed information including:

- Employment levels for public bodies in Scotland.
- Local government employment by local authority for the current quarter.
 - A time series of total local government employment back to Q3 1999 shown for: police and related services and fire and related services separately.
 - A time series of total local government employment back to Q1 2011 by gender
- Links to the UK Public Sector Employment Statistical Bulletin (which contains estimates of public sector employment across each government office region) and other related technical papers.
- Detailed tables showing a full time series of data - all quarters back to Q1 1999 – are also available to download.
- Background notes outlining the methodology used to compile this series.

Further methodology details can be found in background notes.

<http://www.scotland.gov.uk/Topics/Statistics/Browse/Labour-Market/PublicSectorEmployment/SourcesDef>

Key background note

As of the 1st November 2011, the NHS has responsibility for employing Healthcare staff within prisons. Previously, these staff were employed directly by the Scottish Prison Service (SPS). This has resulted in approximately 350 staff (headcount) transferring over to NHS. These staff are included in the NHS figures for 2011 Q4 for the first time. This should be considered when comparing trends across previous years.

For more information please see:

<http://www.isdscotland.org/Health-Topics/Workforce/>

1. Total employment and public and private sector employment in Scotland; Headcount (Table 1)

This section provides a summary of **total employment** in Scotland and the breakdown of **public and private sector employment**. The public sector is defined according to the **UK National Accounts Classifications Guide**¹.

In quarter 1 (Q1) 2012, there were 584,800 people employed in the **public sector** in Scotland. Total public sector employment has decreased by 27,600 (4.5%) since Q1 2011 but increased by 39,700 (7.3%) since Q1 1999.

In the last year **total employment** has decreased from 2,472,000 in Q1 2011 to 2,453,000 in Q1 2012, an decrease of 19,000 (0.8%). There were 1,868,200 people employed in the **private sector** in Scotland, an increase from 1,859,600 in Q1 2011 and an increase from 1,683,200 in Q1 1999.

Total public sector employment accounts for 23.8% of total employment in Scotland. This is down from 24.8% in Q1 2011 and down from 24.5% in Q1 1999. (In 1999 the banking sector was not included in the public sector).

Chart 1: Total Public Sector Employment in Scotland, Headcount, 1999-Q1 2012

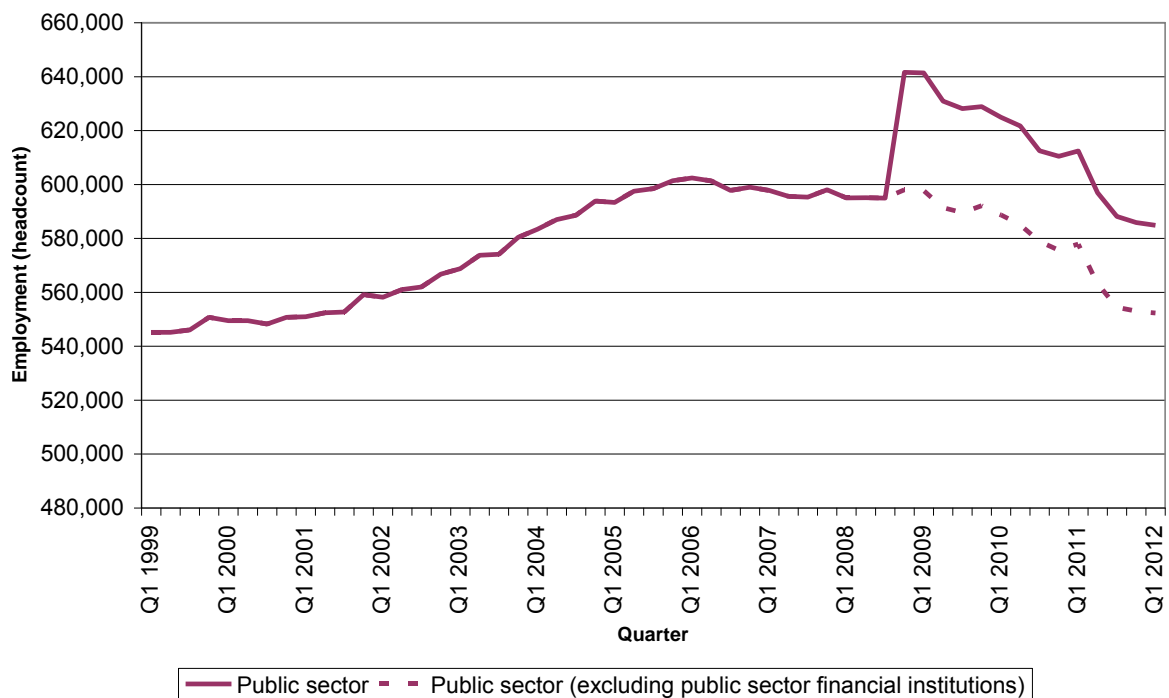
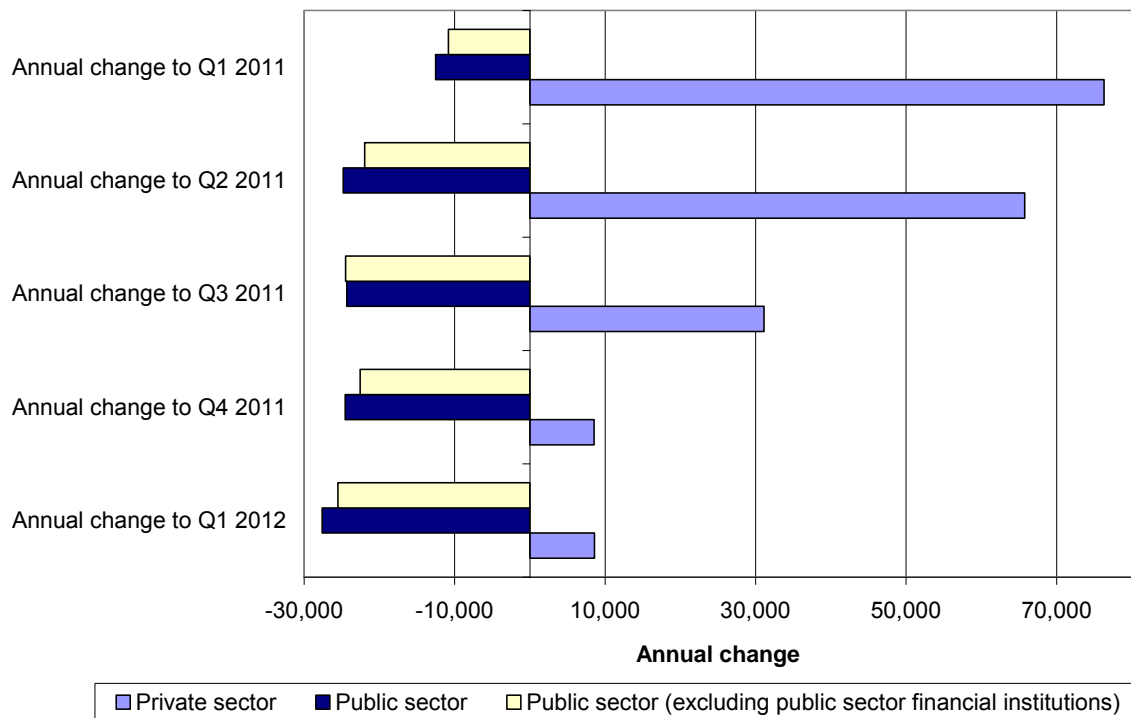


Chart 2: Annual change in employment by main sector, Headcount



Impact of excluding Public Sector Financial Institutions

If we exclude public sector financial institutions² from the series, there would be 552,300 people employed in the public sector, representing 22.5% of total employment in Scotland.

Excluding these banking groups, public sector employment would have decreased by 25,500 (4.4%), instead of 27,600 (4.5%), over the year and public sector employment would have increased by 7,200 (1.3%) since Q1 1999 instead of 39,700 (7.3%).

² Public Sector Financial Institutions includes: Royal Bank of Scotland Group plc, Lloyds Banking Group plc and Northern Rock plc.

2. Public sector employment by devolved and reserved responsibility; Headcount (Table 3)

This section provides a summary of public sector employment in:

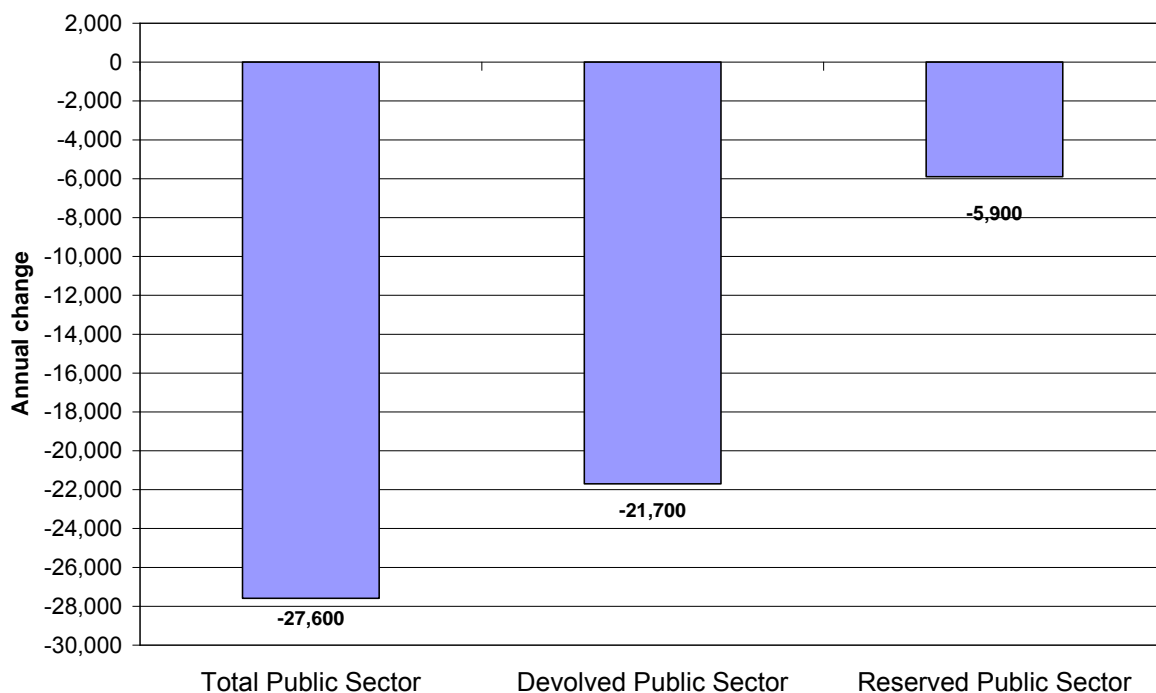
- > **Devolved public bodies** which are the responsibility of the Scottish Government or Scottish Parliament;
- > **Reserved public bodies** for which the UK Government has ministerial responsibility.

Of total public sector employment in Scotland, 491,100 (84%) covers people employed in **devolved public bodies**. This is a decrease of 21,700 (4.2%), down from 512,800 to 491,100, since Q1 2011. The fall in the last year is driven by a decrease in local government employment, down 10,000 (3.4%). Civil Service employment had also decreased by 7,400 (30.9%). It should be noted that employment in the civil service was significantly higher than usual in Q1 2011 due to 6,700 staff recruited to carry out the census.

There were 93,700 (16%) people employed in the **reserved public sector in Scotland**. This was a decrease of 5,900 (5.9%), down from 99,600 to 93,700, in the last year. Employment in the reserved public sector financial institutions decreased by 2,100 (6.1%) in the last year and the reserved civil service decreased by 1,700 (5.4%).

Overall public sector employment decreased by 27,600 (4.5%), down from 612,400 to 584,800 in the last year. Chart 3 below shows how this is split between devolved and reserved public sector.

Chart 3: Annual change (from Q1 2011 to Q1 2012) in public sector employment by devolved and reserved responsibility, Headcount



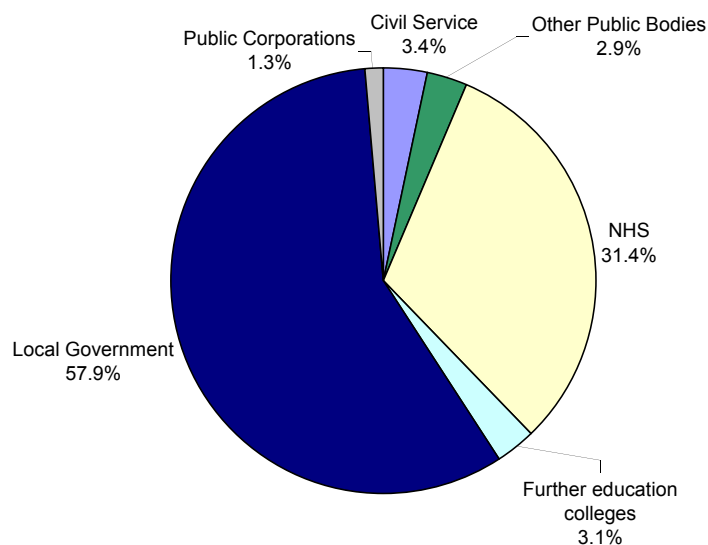
3. Devolved public sector employment in Scotland; Headcount (Table 4)

This section provides a summary of **devolved public sector** employment which includes:

- **Devolved Civil Service**
(section 5 has more detailed breakdowns for the devolved civil service)
- **Local Government**
(which covers Scottish Local Authorities, Police Forces, Fire Boards, Valuation Joint Boards, Bridge Transport Authorities and Regional Transport Partnerships)
- **NHS in Scotland**
- **Further Education Colleges**
- **Devolved Public Corporations**
- **Other Devolved Public Bodies**
(which covers Non-Departmental Bodies and other bodies)

The number of people employed in the devolved public sector decreased by 21,700 (4.1%), falling from 512,800 to 491,100, since Q1 2011. Chart 4 shows the make-up of the devolved civil service as at Q1 2012.

Chart 4: Breakdown of devolved public sector employment by category, Headcount, Q1 2012



! Important Caveat

When interpreting changes over time in devolved public sector employment it should be noted that there has been movement of staff across categories which makes it difficult to monitor changes over time.

Employment in all devolved public sector categories decreased in the last year.

The Q1 2011 publication included further education colleges in Scotland as part of the devolved public sector for the first time. This followed the ONS re-classification of further education colleges in Scotland to the central government sector for the purpose of National Accounts. The reclassification was backdated to Q1 1999, so the full time series has been revised to take into account this change.

Employment in the devolved civil service fell by 7,400 (30.9%) over the last year. This large decrease was due to the inclusion of 6,700 temporary census field staff in Q1 2011. If the census staff had not been included in Q1 2011 then employment would have decreased only by 700 (4.2%). Number of NHS staff decreased by 2,500 1.6%.

The number of local government staff (including Scottish Local Authorities, Police Forces, Fire Boards, Valuation Joint Boards, and Regional Transport Partnerships) decreased by 10,000 (3.4%) down from 294,200 (in Q1 2011) to 284,300 (in Q1 2012).

Employment in the NHS decreased by 2,500 (1.6%) over the year, from 156,900 (in Q1 2011) to 154,400 (in Q1 2012). A detailed breakdown on this information by staffing group was published by ISD on the 29th of May 2012.

<http://www.isdscotland.org/Health-Topics/Workforce/>

Annual Employment also decreased in the following two categories:

- Other Public Bodies down by 600 (3.9%);
- Further Education colleges down by 1,200 (7.6%).

Information for further education colleges in Scotland is based on actual information from Q4 2010. Information has been modelled prior to this. The method used to create the back series is detailed as part of the background notes for this publication.

<http://www.scotland.gov.uk/Topics/Statistics/Browse/Labour-Market/PublicSectorEmployment/FE-Methodology>

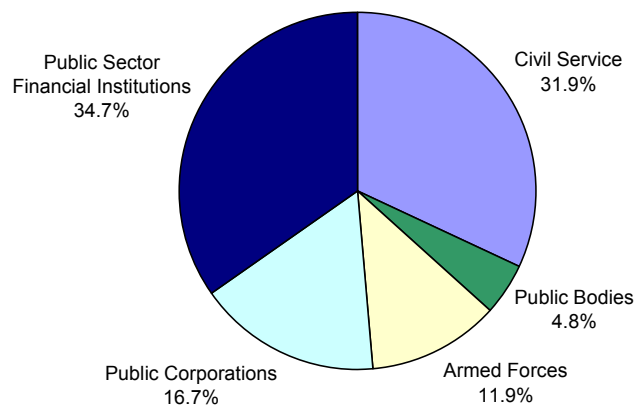
4. Reserved public sector employment in Scotland; Headcount (Table 5)

This section provides a summary of **reserved public sector** employment which includes:

- **Reserved Civil Service**
(section 5 has more detailed breakdowns for the reserved civil service)
- **Armed Forces**
- **Reserved Public Corporations**
- **Public Sector Financial Institutions**
(which covers Royal Bank of Scotland Group plc, Lloyds Banking Group plc and Northern Rock plc)
- **Other Reserved Public Bodies**
(which covers Non-Departmental Bodies and other bodies)

The number of people employed in the reserved public sector decreased by 5,900 (5.9%) from 99,600 (in Q1 2011) to 93,700. Chart 5 shows the make-up of the reserved civil service as at Q1 2012.

Chart 5: Breakdown of reserved public sector employment by sector, Headcount, Q1 2012



Employment levels in all categories of the **reserved** public sector have decreased in the last year:

- Financial Institutions down by 2,100 (6.1%);
- Civil service decreased down by 1,700 (5.4%);
- Public corporations down by 900 (5.7%);
- Public bodies down by 200 (4.8%);
- Armed forces down by 900 (7.4%).

5. Civil Service employment in Scotland; Headcount (Table 6, Table 7)

This section provides a summary of the civil service in Scotland.

The **devolved civil service** is made up of:

- Scottish Government Core Departments
- Scottish Government Agencies
- Crown Office and Procurator Fiscal Service
- Non-Ministerial Departments

The **reserved civil service** is made up of:

- UK Government Departments
- Scotland Office

In Q1 2012 there were 46,400 people employed as civil servants in Scotland. This is made up of 16,500 (35.6%) people working in the devolved civil service and 29,900 (64.4%) working in UK government departments. The total number of civil servants has decreased by 9,000 (16.4%) over the year from Q1 2011. This large decrease was due to the inclusion of 6,700 temporary census field staff in Q1 2011.

Devolved Civil Service

The devolved civil service has decreased by 7,400 (30.9%) since Q1 2011. Chart 6 shows a breakdown of the devolved civil service in Scotland as at Q1 2012.

! Movement of staff between categories within the devolved civil service

When interpreting changes over time in the devolved civil service in Scotland it should be noted that due to organisational changes, staff have transferred between Scottish Government (SG) departments and agencies. This makes interpreting changes over time complicated.

The SG core departments now include staff who were previously classified as agency staff in 2008 and 2009.

The Scottish Courts Service (previously a SG agency) has been reclassified to a Non-Ministerial Department from 1 April 2010.

From 1 April 2011, National Archives for Scotland moved from being a Government Agency to form a new Non-Ministerial Department (National Records of Scotland) as part of a merger with GROS.

More detail about the above changes can be found in the background notes.

<http://www.scotland.gov.uk/Topics/Statistics/Browse/Labour-Market/PublicSectorEmployment/SourcesDef>

SG Core

In Q1 2012, there were 5,200 people employed in SG core departments, representing 31.5% of the devolved civil service in Scotland. Over the year from Q1 2011, employment in SG core departments has decreased by 300 (4.9%).

SG Agencies

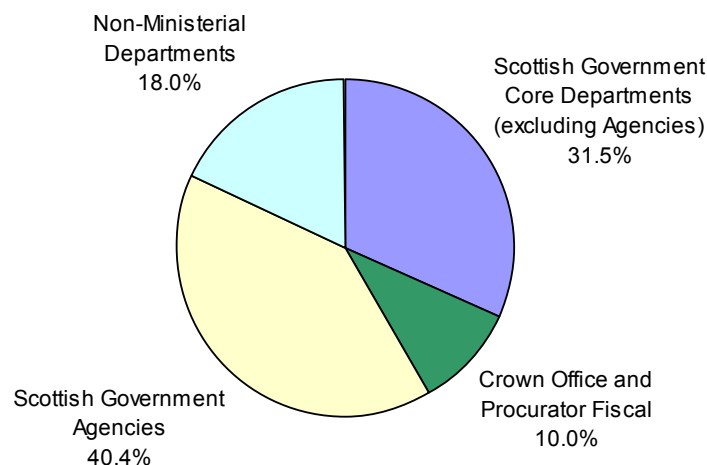
There were 6,700 people employed in Scottish Government agencies in Q1 2012. Employment in SG agencies has decreased by less than 50 people (0.3%) over the year to Q1 2011. From Q4 2011, NHS has responsibility for employing Healthcare staff within prisons. Previously, these people were employed directly by the Scottish Prison Service (SPS), a SG Agency.

Non Ministerial Departments

Non Ministerial Departments (NMD) include the National Records of Scotland, Registers of Scotland, the Office of the Scottish Charity Regulator and the Scottish Courts Service (SCS). In Q1 2012, there were 3,000 people employed in these NMDs. Over the year, employment in NMDs decreased by 6,900 (70%). In Q1 2011 9,900 people were employed in Non-Ministerial Departments. It should be noted this is significantly higher than usual as 6,700 of these were temporary census field staff.

Employment in the Crown Office & Procurator Fiscal Service decreased by 100 (7.8%) to 1,700 over the year to Q1 2012.

Chart 6: Breakdown of devolved civil service employment, Scotland, Headcount, Q1 2012



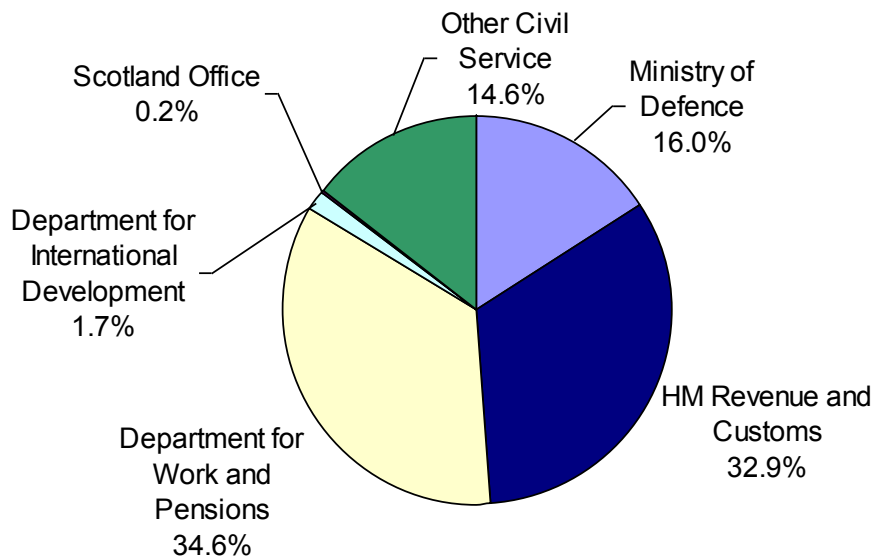
Reserved Civil Service

The reserved civil service has decreased by 1,700 (5.4%), from 31,600 in Q1 2011 to 29,900 in Q1 2012.

This has been driven by a decrease in employment in the Department for Work and Pensions, down 800 (7.1%), over the year and a decrease in Ministry of Defence, down 900 (15.8%).

Chart 7 shows a breakdown of employment in the UK government departments as at Q1 2012.

Chart 7: Breakdown of reserved civil service employment, Scotland, Headcount, Q1 2012



List of Tables

| | <i>Page</i> |
|---|-------------|
| Table 1: Number of people employed by public and private sector; Scotland, Headcount | 14 |
| Table 2: Public sector employment by National Accounts Sector Classification; Scotland, Headcount | 15 |
| Table 3: Public sector employment by devolved and reserved sector; Scotland, Headcount and Full-time equivalent | 16 |
| Table 4: Total devolved public sector employment by sector; Scotland, Headcount | 17 |
| Table 5: Total reserved public sector employment by sector; Scotland, Headcount | 18 |
| Table 6: Devolved civil service employment; Scotland, Headcount | 19 |
| Table 7: Reserved civil service employment; Scotland, Headcount | 20 |
| Table 8: Total devolved public sector employment by sector; Scotland, Full-time equivalent | 21 |
| Table 9: Total reserved public sector employment by sector; Scotland, Full-time equivalent | 22 |
| Table 10: Devolved civil service employment; Scotland, Full-time equivalent | 23 |
| Table 11: Reserved civil service employment; Scotland, Full-time equivalent | 24 |

These tables include comparisons for Q1 in 1999 and 2006 to 2012. A complete time series, including all quarters back to Q1 1999 is provided in the excel spreadsheets published at the public sector employment web section

<http://www.scotland.gov.uk/Topics/Statistics/Browse/Labour-Market/PublicSectorEmployment>

Background Notes

Background notes about the information contained in our PSE series are available at the following web section:

<http://www.scotland.gov.uk/Topics/Statistics/Browse/Labour-Market/PublicSectorEmployment/SourcesDef>

Next Publication: 12th September 2012

Table 1: Number of people employed by public and private sector; Scotland, Headcount
Not Seasonally Adjusted

| | Total Employment | Private Sector | | Public Sector | | Public Sector <i>Excluding public sector financial institutions</i> | |
|---------------------------|------------------|----------------|--------------------------------------|---------------|--------------------------------------|--|--------------------------------------|
| | Level | Level | Percentage of total employment | Level | Percentage of total employment | Level | Percentage of total employment |
| Q1 1999 | 2,228,000 | 1,683,200 | 75.5% | 545,100 | 24.5% | 545,100 | 24.5% |
| Q1 2006 | 2,461,000 | 1,858,500 | 75.5% | 602,400 | 24.5% | 602,400 | 24.5% |
| Q1 2007 | 2,540,000 | 1,942,200 | 76.5% | 597,800 | 23.5% | 597,800 | 23.5% |
| Q1 2008 | 2,554,000 | 1,959,100 | 76.7% | 595,000 | 23.3% | 595,000 | 23.3% |
| Q1 2009 | 2,508,000 | 1,866,700 | 74.4% | 641,400 | 25.6% | 597,700 | 23.8% |
| Q1 2010 | 2,408,000 | 1,783,300 | 74.1% | 624,900 | 25.9% | 588,600 | 24.4% |
| Q1 2011 | 2,472,000 | 1,859,600 | 75.2% | *612,400 | 24.8% | 577,800 | 23.4% |
| Q1 2012 | 2,453,000 | 1,868,200 | 76.2% | 584,800 | 23.8% | 552,300 | 22.5% |
| Change on year to: | | | | | | | |
| Q1 2012 | -19,000 | 8,600 | | -27,600 | | -25,500 | |
| % change on year: | | | | | | | |
| Q1 2012 | -0.8% | 0.5% | | -4.5% | | -4.4% | |

Notes:

1. Figures have been rounded to the nearest hundred. Total employment has been rounded to the nearest thousand.
2. Public sector financial institutions include Northern Rock (classified to the public sector from Q4 2007), Royal Bank of Scotland Group plc and Lloyds Banking Group plc (both classified to the public sector from Q4 2008).

* Estimates for Q1 2011 include 6,700 staff recruited to carry out the 2011 census

Detailed tables showing a full time series of data - all quarters back to Q1 1999 – are available to download from the Public Sector Employment Websection:

<http://www.scotland.gov.uk/Topics/Statistics/Browse/Labour-Market/PublicSectorEmployment>

Table 2: Public sector employment by National Accounts Sector Classification; Scotland, Headcount
Not Seasonally Adjusted

| | National Accounts Central Government Category | | | | | | | | | |
|---------------------------|--|----------------------|----------------------------|------------|---------------------|-----------------------------------|---------------------------------|-------------------------|----------------------------|---|
| | Total Public Sector | Civil Service | Other Public Bodies | NHS | Armed Forces | Further Education Colleges | Total Central Government | Local Government | Public Corporations | Public Sector Financial Institutions |
| Q1 1999 | 545,100 | 48,300 | 13,500 | 129,000 | 14,800 | 15,700 | 221,200 | 293,900 | 30,000 | |
| Q1 2006 | 602,400 | 52,400 | 18,300 | 147,500 | 13,500 | 16,600 | 248,400 | 325,200 | 28,800 | |
| Q1 2007 | 597,800 | 50,900 | 18,200 | 151,900 | 12,600 | 16,700 | 250,300 | 320,700 | 26,800 | |
| Q1 2008 | 595,000 | 49,500 | 21,200 | 154,300 | 12,000 | 16,900 | 253,900 | 316,000 | 25,200 | |
| Q1 2009 | 641,400 | 50,300 | 21,500 | 158,200 | 12,000 | 16,900 | 259,000 | 314,100 | 24,600 | 43,600 |
| Q1 2010 | 624,900 | 50,600 | 20,700 | 160,800 | 12,100 | 16,000 | 260,200 | 304,300 | 24,100 | 36,300 |
| Q1 2011 | 612,400 | *55,500 | 19,700 | 156,900 | 12,100 | 16,500 | 260,700 | 294,200 | 22,900 | 34,600 |
| Q1 2012 | 584,800 | 46,400 | 18,900 | 154,400 | 11,200 | 15,200 | 246,100 | 284,300 | 21,900 | 32,500 |
| Change on year to: | | | | | | | | | | |
| Q1 2012 | -27,600 | -9,100 | -800 | -2,500 | -900 | -1,200 | -14,600 | -10,000 | -1,000 | -2,100 |
| % change on year: | | | | | | | | | | |
| Q1 2012 | -4.5% | -16.4% | -4.1% | -1.6% | -7.4% | -7.6% | -5.6% | -3.4% | -4.3% | -6.1% |

Notes:

1. Figures have been rounded to the nearest hundred.

2. Public sector financial institutions include Northern Rock (classified to the public sector from Q4 2007), Royal Bank of Scotland Group plc and Lloyds Banking Group plc (both classified to the public sector from Q4 2008).

3. Local Government category revised to include Strathclyde Partnership for Transport (SPT) following a review by the National Accounts Classifications Team at ONS.

4. A number of local government staff have transferred to arms length organisations which are part of the private sector under National Accounts definitions. For example, staff transferred from Glasgow City Council to Cordia Limited Liability Partnership from 1 April 2009 thus explaining the decrease in local government employment between 2008 and 2009.

5. Information for further education colleges in Scotland is based on actual information from Q4 2010. The method used to create the back series is detailed in the background notes of this publication.

6. From Q4 2011, NHS has responsibility for employing Healthcare staff within prisons. Previously, these people were employed directly by the Scottish Prison Service (SPS).

* Estimates for Q1 2011 include 6,700 staff recruited to carry out the 2011 census

Detailed tables showing a full time series of data - all quarters back to Q1 1999 – are available to download from the Public Sector Employment Websection:

<http://www.scotland.gov.uk/Topics/Statistics/Browse/Labour-Market/PublicSectorEmployment>

Table 3: Public sector employment by devolved and reserved sector; Scotland, Headcount and Full-time equivalent
Not Seasonally Adjusted

| | Headcount | | | Full-time equivalent | | |
|---------------------------|---------------------|------------------------|------------------------|----------------------|------------------------|------------------------|
| | Total Public Sector | Devolved Public Sector | Reserved Public Sector | Total Public Sector | Devolved Public Sector | Reserved Public Sector |
| Q1 1999 | 545,100 | 471,100 | 74,000 | 454,900 | 384,100 | 70,800 |
| Q1 2006 | 602,400 | 524,500 | 77,900 | 507,400 | 433,800 | 73,600 |
| Q1 2007 | 597,800 | 524,800 | 73,000 | 502,900 | 434,200 | 68,800 |
| Q1 2008 | 595,000 | 526,000 | 69,000 | 503,300 | 438,500 | 64,800 |
| Q1 2009 | 641,400 | 528,600 | 112,700 | 545,900 | 441,400 | 104,500 |
| Q1 2010 | 624,900 | 521,000 | 103,900 | 533,200 | 436,700 | 96,500 |
| Q1 2011 | *612,400 | *512,800 | 99,600 | 518,800 | 426,000 | 92,800 |
| Q1 2012 | 584,800 | 491,100 | 93,700 | 499,400 | 412,700 | 86,700 |
| Change on year to: | | | | | | |
| Q1 2012 | -27,600 | -21,700 | -5,900 | -19,400 | -13,300 | -6,100 |
| % change on year: | | | | | | |
| Q1 2012 | -4.5% | -4.2% | -5.9% | -3.7% | -3.1% | -6.6% |

Notes:

1. Figures have been rounded to the nearest hundred.

2. Devolved Public Sector consists of the following staff groups: Civil Service, Other public Bodies, NHS, Further Education Colleges, Local Government and Public Corporations. (as shown in Table 4)

Reserved Public Sector consists of the following staff groups: Civil Service, Public Bodies, Armed Forces, Public Corporations, Public Sector Financial Institutions (as shown in Table 5)

3. Northern Rock classified to public sector from Q4 2007. Royal Bank of Scotland Group plc and Lloyds Banking Group plc classified to the public sector from Q4 2008.

* Estimates for Q1 2011 include 6,700 staff recruited to carry out the 2011 census

Detailed tables showing a full time series of data - all quarters back to Q1 1999 – are available to download from the Public Sector Employment Websection:

<http://www.scotland.gov.uk/Topics/Statistics/Browse/Labour-Market/PublicSectorEmployment>

Table 4: Total devolved public sector employment by sector; Scotland, Headcount
Not Seasonally Adjusted

| | Total Devolved Public Sector | Civil Service | Other Public Bodies | NHS | Further education colleges | Local Government | Public Corporations |
|---------------------------|---|----------------------|--------------------------------|------------|---|-----------------------------|--------------------------------|
| Q1 1999 | 471,100 | 14,600 | 8,500 | 129,000 | 15,700 | 293,900 | 9,500 |
| Q1 2006 | 524,500 | 16,600 | 11,800 | 147,500 | 16,600 | 325,200 | 6,700 |
| Q1 2007 | 524,800 | 16,600 | 12,100 | 151,900 | 16,700 | 320,700 | 6,800 |
| Q1 2008 | 526,000 | 16,800 | 15,200 | 154,300 | 16,900 | 316,000 | 6,900 |
| Q1 2009 | 528,600 | 17,200 | 15,600 | 158,200 | 16,900 | 314,100 | 6,600 |
| Q1 2010 | 521,000 | 17,600 | 15,700 | 160,800 | 16,000 | 304,300 | 6,600 |
| Q1 2011 | *512,800 | *23,900 | 15,000 | 156,900 | 16,500 | 294,200 | 6,300 |
| Q1 2012 | 491,100 | 16,500 | 14,400 | 154,400 | 15,200 | 284,300 | 6,300 |
| Change on year to: | | | | | | | |
| Q1 2012 | -21,700 | -7,400 | -600 | -2,500 | -1,200 | -10,000 | 0 |
| % change on year: | | | | | | | |
| Q1 2012 | -4.2% | -30.9% | -3.9% | -1.6% | -7.6% | -3.4% | -0.5% |

Notes:

1. Figures have been rounded to the nearest hundred.
2. Local Government category revised to include Strathclyde Partnership for Transport (SPT) following a review by the National Accounts Classifications Team at ONS.
3. A number of local government staff have transferred to arms length organisations which are part of the private sector under National Accounts definitions. For example, staff transferred from Glasgow City Council to Cordia Limited Liability Partnership from 1 April 2009 thus explaining the decrease in local government employment between 2008 and 2009.
4. Staff from Local Authority District Courts and Police Authorities have transferred into the Devolved Civil Service since 2007.
5. Information for further education colleges in Scotland is based on actual information from Q4 2010. The method used to create the back series is detailed in the background notes of this publication.
6. From Q4 2011, NHS has responsibility for employing Healthcare staff within prisons. Previously, these people were employed directly by the Scottish Prison Service (SPS).
7. Where the change on the year is less than 50 this rounds to '0'

* Estimates for Q1 2011 include 6,700 staff recruited to carry out the 2011 census

Detailed tables showing a full time series of data - all quarters back to Q1 1999 – are available to download from the Public Sector Employment Websection:

<http://www.scotland.gov.uk/Topics/Statistics/Browse/Labour-Market/PublicSectorEmployment>

Table 5: Total reserved public sector employment by sector; Scotland, Headcount
Not Seasonally Adjusted

| | Total Reserved Public Sector | Civil Service | Public Bodies | Armed Forces | Public Corporations | Public Sector Financial Institutions |
|---------------------------|---|----------------------|----------------------|---------------------|--------------------------------|---|
| Q1 1999 | 74,000 | 33,700 | 5,000 | 14,800 | 20,500 | |
| Q1 2006 | 77,900 | 35,800 | 6,500 | 13,500 | 22,100 | |
| Q1 2007 | 73,000 | 34,300 | 6,100 | 12,600 | 20,000 | |
| Q1 2008 | 69,000 | 32,700 | 6,000 | 12,000 | 18,300 | |
| Q1 2009 | 112,700 | 33,100 | 5,900 | 12,000 | 18,000 | 43,600 |
| Q1 2010 | 103,900 | 33,000 | 5,000 | 12,100 | 17,600 | 36,300 |
| Q1 2011 | 99,600 | 31,600 | 4,800 | 12,100 | 16,600 | 34,600 |
| Q1 2012 | 93,700 | 29,900 | 4,500 | 11,200 | 15,600 | 32,500 |
| Change on year to: | | | | | | |
| Q1 2012 | -5,900 | -1,700 | -200 | -900 | -900 | -2,100 |
| % change on year: | | | | | | |
| Q1 2012 | -5.9% | -5.4% | -4.8% | -7.4% | -5.7% | -6.1% |

Notes:

1. Figures have been rounded to the nearest hundred.
2. Public sector financial institutions include Northern Rock (classified to the public sector from Q4 2007), Royal Bank of Scotland Group plc and Lloyds Banking Group plc (both classified to the public sector from Q4 2008).
3. Where the change on the year is less than 50 this rounds to '0'

Detailed tables showing a full time series of data - all quarters back to Q1 1999 – are available to download from the Public Sector Employment Websection:

<http://www.scotland.gov.uk/Topics/Statistics/Browse/Labour-Market/PublicSectorEmployment>

Table 6: Devolved civil service employment; Scotland, Headcount
Not Seasonally Adjusted

| | Devolved Civil Service | | | | |
|---------------------------|------------------------------|--|------------------------------------|------------------------------|-----------------------------|
| | Total Devolved Civil Service | Scottish Government Core Directorates (excluding Agencies) | Crown Office and Procurator Fiscal | Scottish Government Agencies | Non-Ministerial Departments |
| Q1 2006 | 16,600 | 4,500 | 1,600 | 8,800 | 1,800 |
| Q1 2007 | 16,600 | 4,300 | 1,600 | 8,900 | 1,700 |
| Q1 2008 | 16,800 | 4,500 | 1,600 | 8,900 | 1,700 |
| Q1 2009 | 17,200 | 5,100 | 1,800 | 8,600 | 1,700 |
| Q1 2010 | 17,600 | 5,700 | 1,900 | 8,300 | 1,700 |
| Q1 2011 | *23,900 | 5,500 | 1,800 | 6,700 | *9,900 |
| Q1 2012 | 16,500 | 5,200 | 1,700 | 6,700 | 3,000 |
| Change on year to: | | | | | |
| Q1 2012 | -7,400 | -300 | -100 | 0 | -6,900 |
| % change on year: | | | | | |
| Q1 2012 | -30.9% | -4.9% | -7.8% | -0.3% | -70.0% |

Notes:

1. Figures have been rounded to the nearest hundred.
2. Since Q2 2008, six Government Agencies have been absorbed into the Scottish Government Core Departments. Further details are provided in the background notes.
3. From Q2 2010, the Scottish Court Service was reclassified from Government Agency to Non-Ministerial Department.
4. Staff from Local Authority District Courts and Police Authorities have transferred into the Devolved Civil Service since 2007.
5. From Q4 2011, NHS has responsibility for employing Healthcare staff within prisons. Previously, these people were employed directly by the Scottish Prison Service (SPS).
6. Where the change on the year is less than 50 this rounds to

* Estimates for Q1 2011 include 6,700 staff recruited to carry out the 2011 census

Detailed tables showing a full time series of data - all quarters back to Q1 1999 – are available to download from the <http://www.scotland.gov.uk/Topics/Statistics/Browse/Labour-Market/PublicSectorEmployment>

Table 7: Reserved civil service employment; Scotland, Headcount
Not Seasonally Adjusted

| | Reserved Civil Service | | | | | | |
|---------------------------|------------------------------|---------------------|------------------------|----------------------------------|--|-----------------|---------------------|
| | Total Reserved Civil Service | Ministry of Defence | HM Revenue and Customs | Department for Work and Pensions | Department for International Development | Scotland Office | Other Civil Service |
| Q1 2006 | 35,800 | 7,100 | 11,400 | 13,900 | 600 | 60 | 2,900 |
| Q1 2007 | 34,300 | 6,700 | 11,500 | 12,800 | 600 | 50 | 2,800 |
| Q1 2008 | 32,700 | 6,100 | 11,000 | 12,200 | 500 | 60 | 2,800 |
| Q1 2009 | 33,100 | 6,000 | 11,100 | 11,100 | 500 | 70 | 4,500 |
| Q1 2010 | 33,000 | 5,900 | 10,000 | 12,200 | 500 | 70 | 4,300 |
| Q1 2011 | 31,600 | 5,700 | 9,900 | 11,100 | 500 | 70 | 4,400 |
| Q1 2012 | 29,900 | 4,800 | 9,800 | 10,300 | 500 | 70 | 4,400 |
| Change on year to: | | | | | | | |
| Q1 2012 | -1,700 | -900 | 0 | -800 | 0 | 10 | 0 |
| % change on year: | | | | | | | |
| Q1 2012 | -5.4% | -15.8% | -0.2% | -7.1% | 2.4% | 8.8% | 0.0% |

Notes:

1. Figures have been rounded to the nearest hundred, with the exception of the Scotland Office figures which are rounded to the nearest ten.
2. Staff, previously employed in the Child Support Agency within DWP have transferred to the new Child Maintenance and Enforcement Commission (CMEC) from Q4 2008. CMEC is a Non-Departmental Public Body. However, CMEC staff are included in the 'Other Civil Service' category as staff have retained their civil service contracts.
3. Where the change on the year is less than 50 this rounds to '0'

Detailed tables showing a full time series of data - all quarters back to Q1 1999 – are available to download from the Public Sector Employment Websection: <http://www.scotland.gov.uk/Topics/Statistics/Browse/Labour-Market/PublicSectorEmployment>

Table 8: Total devolved public sector employment by sector; Scotland, Full-time equivalent
Not Seasonally Adjusted

| | Total Devolved Public Sector | Civil Service | Other Public Bodies | NHS | Further Education Colleges | Local Government | Public Corporations |
|---------------------------|---|----------------------|--------------------------------|------------|---|-----------------------------|--------------------------------|
| Q1 1999 | 384,100 | 14,100 | 7,800 | 106,000 | 11,500 | 235,400 | 9,200 |
| Q1 2006 | 433,800 | 15,900 | 11,000 | 124,900 | 12,200 | 263,400 | 6,400 |
| Q1 2007 | 434,200 | 15,800 | 11,100 | 128,900 | 12,200 | 259,500 | 6,500 |
| Q1 2008 | 438,500 | 16,000 | 14,000 | 131,200 | 12,400 | 258,300 | 6,600 |
| Q1 2009 | 441,400 | 16,400 | 14,400 | 134,600 | 12,300 | 257,400 | 6,300 |
| Q1 2010 | 436,700 | 16,700 | 14,400 | 136,700 | 11,700 | 250,900 | 6,200 |
| Q1 2011 | 426,000 | 17,900 | 13,800 | 133,300 | 12,100 | 243,000 | 6,000 |
| Q1 2012 | 412,700 | 15,700 | 13,100 | 131,200 | 11,000 | 235,600 | 6,000 |
| Change on year to: | | | | | | | |
| Q1 2012 | -13,300 | -2,200 | -700 | -2,200 | -1,100 | -7,400 | 100 |
| % change on year: | | | | | | | |
| Q1 2012 | -3.1% | -12.1% | -4.7% | -1.6% | -8.9% | -3.0% | 1.0% |

Notes:

1. Figures have been rounded to the nearest hundred.
2. Local Government category revised to include Strathclyde Partnership for Transport (SPT) following a review by the National Accounts Classifications Team at ONS.
3. A number of local government staff have transferred to arms length organisations which are part of the private sector under National Accounts definitions. For example, staff transferrred from Glasgow City Council to Cordia Limited Liability Partnership from 1 April 2009 thus explaining the decrease in local government employment between 2008 and 2009.
4. Staff from Local Authority District Courts and Police Authorities have transferred into the Devolved Civil Service since 2007.
5. Information for further education colleges in Scotland is based on actual information from Q4 2010. The method used to create the back series is detailed in the background notes of this publication.
6. From Q4 2011, NHS has responsibility for employing Healthcare staff within prisons. Previously, these people were employed directly by the Scottish Prison Service (SPS).

Detailed tables showing a full time series of data - all quarters back to Q1 1999 – are available to download from the Public Sector Employment Websection:

<http://www.scotland.gov.uk/Topics/Statistics/Browse/Labour-Market/PublicSectorEmployment>

Table 9: Total reserved public sector employment by sector; Scotland, Full-time equivalent
Not Seasonally Adjusted

| | Total Reserved Public Sector | Civil Service | Public Bodies | Armed Forces | Public Corporations | Public Sector Financial Institutions |
|---------------------------|---|----------------------|----------------------|---------------------|--------------------------------|---|
| Q1 1999 | 70,800 | 32,100 | 4,700 | 14,800 | 19,200 | |
| Q1 2006 | 73,600 | 33,400 | 6,200 | 13,500 | 20,500 | |
| Q1 2007 | 68,800 | 32,000 | 5,700 | 12,600 | 18,500 | |
| Q1 2008 | 64,800 | 30,500 | 5,500 | 12,000 | 16,900 | |
| Q1 2009 | 104,500 | 30,600 | 5,600 | 12,000 | 16,600 | 39,700 |
| Q1 2010 | 96,500 | 30,500 | 4,600 | 12,100 | 16,100 | 33,200 |
| Q1 2011 | 92,800 | 29,000 | 4,400 | 12,100 | 15,500 | 31,800 |
| Q1 2012 | 86,700 | 27,200 | 4,200 | 11,200 | 14,300 | 29,800 |
| Change on year to: | | | | | | |
| Q1 2012 | -6,100 | -1,800 | -200 | -900 | -1,200 | -2,000 |
| % change on year: | | | | | | |
| Q1 2012 | -6.6% | -6.3% | -4.3% | -7.4% | -7.8% | -6.2% |

Notes:

1. Figures have been rounded to the nearest hundred.
2. Public sector financial institutions include Northern Rock (classified to the public sector from Q4 2007), Royal Bank of Scotland Group plc and Lloyds Banking Group plc (both classified to the public sector from Q4 2008).
3. Where the change on the year is less than 50 this rounds to '0'

Detailed tables showing a full time series of data - all quarters back to Q1 1999 – are available to download from the Public Sector Employment Websection:

<http://www.scotland.gov.uk/Topics/Statistics/Browse/Labour-Market/PublicSectorEmployment>

Table 10: Devolved civil service employment; Scotland, Full-time equivalent
Not Seasonally Adjusted

| | Devolved Civil Service | | | | |
|---------------------------|------------------------------|--|------------------------------------|------------------------------|-----------------------------|
| | Total Devolved Civil Service | Scottish Government Core Directorates (excluding Agencies) | Crown Office and Procurator Fiscal | Scottish Government Agencies | Non-Ministerial Departments |
| Q1 2006 | 15900 | 4300 | 1500 | 8400 | 1700 |
| Q1 2007 | 15800 | 4200 | 1500 | 8500 | 1600 |
| Q1 2008 | 16000 | 4300 | 1500 | 8500 | 1600 |
| Q1 2009 | 16,400 | 4,800 | 1,700 | 8,200 | 1,600 |
| Q1 2010 | 16,700 | 5,500 | 1,800 | 7,900 | 1,600 |
| Q1 2011 | 17,900 | 5,200 | 1,700 | 6,500 | 4,500 |
| Q1 2012 | 15,700 | 5,000 | 1,500 | 6,400 | 2,800 |
| Change on year to: | | | | | |
| Q1 2012 | -2,200 | -300 | -100 | 0 | -1,700 |
| % change on year: | | | | | |
| Q1 2012 | -12.1% | -5.0% | -8.6% | -0.2% | -38.5% |

Notes:

1. Figures have been rounded to the nearest hundred.
2. Since Q2 2008, six Government Agencies have been absorbed into the Scottish Government Core Departments. Further details are provided in the background notes.
3. From Q2 2010, the Scottish Court Service was reclassified from Government Agency to Non-Ministerial Department.
4. Staff from Local Authority District Courts and Police Authorities have transferred into the Devolved Civil Service since 2007.
5. From Q4 2011, NHS has responsibility for employing Healthcare staff within prisons. Previously, these people were employed directly by the Scottish Prison Service (SPS).
6. Where the change on the year is less than 50 this rounds to '0'

Detailed tables showing a full time series of data - all quarters back to Q1 1999 – are available to download from the Public Sector Employment Websection:

<http://www.scotland.gov.uk/Topics/Statistics/Browse/Labour-Market/PublicSectorEmployment>

Table 11: Reserved civil service employment; Scotland, Full-time equivalent
Not Seasonally Adjusted

| | Reserved Civil Service | | | | | | |
|---------------------------|------------------------------|---------------------|------------------------|----------------------------------|--|-----------------|---------------------|
| | Total Reserved Civil Service | Ministry of Defence | HM Revenue and Customs | Department for Work and Pensions | Department for International Development | Scotland Office | Other Civil Service |
| Q1 2006 | 33,400 | 6,900 | 10,500 | 12,700 | 500 | 60 | 2,700 |
| Q1 2007 | 32,000 | 6,500 | 10,500 | 11,700 | 500 | 50 | 2,700 |
| Q1 2008 | 30,500 | 6,000 | 10,100 | 11,100 | 500 | 60 | 2,700 |
| Q1 2009 | 30,600 | 5,700 | 10,000 | 10,100 | 500 | 60 | 4,200 |
| Q1 2010 | 30,500 | 5,700 | 9,000 | 11,200 | 400 | 70 | 4,000 |
| Q1 2011 | 29,000 | 5,500 | 8,800 | 10,100 | 500 | 60 | 4,000 |
| Q1 2012 | 27,200 | 4,700 | 8,600 | 9,300 | 500 | 70 | 4,000 |
| Change on year to: | | | | | | | |
| Q1 2012 | -1,800 | -900 | -200 | -800 | 0 | 10 | 0 |
| % change on year: | | | | | | | |
| Q1 2012 | -6.3% | -15.4% | -2.2% | -7.8% | 2.6% | 9.8% | -0.3% |

Notes:

1. Figures have been rounded to the nearest hundred, with the exception of the Scotland Office figures which are rounded to the nearest ten.
2. Staff, previously employed in the Child Support Agency within DWP have transferred to the new Child Maintenance and Enforcement Commission (CMEC) from Q4 2008. CMEC is a Non-Departmental Public Body. However, CMEC staff are included in the 'Other Civil Service' category as staff have retained their civil service contracts.
3. Where the change on the year is less than 50 this rounds to '0'

Detailed tables showing a full time series of data - all quarters back to Q1 1999 – are available to download from the Public Sector Employment Websection:
<http://www.scotland.gov.uk/Topics/Statistics/Browse/Labour-Market/PublicSectorEmployment>

A NATIONAL STATISTICS PUBLICATION FOR SCOTLAND

Official and National Statistics are produced to high professional standards set out in the Code of Practice for Official Statistics at <http://www.statisticsauthority.gov.uk/assessment/code-of-practice/code-of-practice-for-official-statistics.pdf>. Both undergo regular quality assurance reviews to ensure that they meet customer needs and are produced free from any political interference.

The United Kingdom Statistics Authority has designated these statistics as National Statistics, in accordance with the Statistics and Registration Service Act 2007 and signifying compliance with the Code of Practice for Official Statistics.

Designation can be broadly interpreted to mean that the statistics:

- meet identified user needs;
- are well explained and readily accessible;
- are produced according to sound methods, and
- are managed impartially and objectively in the public interest.

Once statistics have been designated as National Statistics it is a statutory requirement that the Code of Practice shall continue to be observed.

Further information about Official and National Statistics can be found on the UK Statistics Authority website at www.statisticsauthority.gov.uk

SCOTTISH GOVERNMENT STATISTICIAN GROUP

Our Aim

To provide relevant and reliable information, analysis and advice that meet the needs of government, business and the people of Scotland.

For more information on the Statistician Group, please see the Scottish Government website at www.scotland.gov.uk/statistics

Correspondence and enquiries

Enquiries on this publication should be addressed to:

Sian Rasdale
Education Analytical Services
Scottish Government
5th Floor, 5 Atlantic Quay
GLASGOW G2 8LU
Telephone: (0300) 244 6783;
e-mail: labour-market.statistics@scotland.gsi.gov.uk

General enquiries on Scottish Government statistics can be addressed to:

Office of the Chief Statistician
Scottish Government
4N.06, St Andrews House
EDINBURGH EH1 3DG
Telephone: (0131) 244 0442
e-mail: statistics.enquiries@scotland.gsi.gov.uk

Media enquiries contact:

Lisa McDonald 0131 244 2967

Further contact details, e-mail addresses and details of previous and forthcoming publications can be found on the Scottish Government Website at www.scotland.gov.uk/statistics

Complaints and suggestions

If you are not satisfied with our service, please write to the Chief Statistician, 4N.06, St Andrews House, Edinburgh, EH1 3DG, Telephone: (0131) 244 0302, e-mail Chiefstatistician@scotland.gsi.gov.uk. We also welcome any comments or suggestions that would help us to improve our standards of service.

ScotStat

If you would like to be consulted about new or existing statistical collections or receive notification of forthcoming statistical publications, please register your interest on the Scottish Government ScotStat website at www.scotland.gov.uk/scotstat

Crown Copyright

Brief extracts from the Crown Copyright material in this publication may be reproduced provided the source is fully acknowledged.

ISBN: 978-1-78045-858-8

APS Group Scotland
DPPAS13049 (06/12)