

Statistics Publication Notice

ISBN 978 0 7559 6776 6

Education Series

ISSN 1479-7569

SQA EXAMINATION RESULTS IN SCOTTISH SCHOOLS: 2006/07

26 September 2007

A National Statistics Publication for Scotland

This Statistics Publication Notice presents national and education authority level information on the cumulative attainment of National Qualifications by all pupils in publicly funded secondary schools. It is the latest in a series of annual publications about exam results published by the Scottish Government.

The Scottish Credit and Qualifications Framework (SCQF) is used as the basis for reporting attainment. The SCQF levels are shown below for information.

Scottish Credit and Qualifications Framework	
Level	Qualifications Included
7	Advanced Higher @ A-C
6	Higher @ A-C
5	Standard Grade @ 1-2, Intermediate 2 @ A-C
4	Standard Grade @ 3-4, Intermediate 1 @ A-C
3	Standard Grade @ 5-6, Access 3 Cluster

Any attainment below SCQF level 3 is not reported on in this publication.

Main findings:

- Overall attainment in Scottish schools in 2006/07 was broadly similar to the levels attained in previous years.
- A higher proportion of females than males achieved awards at all levels, by the end of all stages. In S5 and S6, this is partly due to higher staying on rates for females than males.

Changes to National Qualifications: Between the academic years 2005/06 and 2006/07 some changes were made to National Qualifications which may affect attainment figures in 2007 and future years. These are described in section 2.2.

In 2006/07:

- Ninety-one per cent of pupils gained awards in both English and Maths at SCQF level 3 (e.g. Standard Grade Foundation) or better by the end of S4. Thirty-two per cent attained five or more awards at SCQF level 5 (e.g. Standard Grade Credit) or better by the end of S4 (Table 2).
- By the end of S5, twenty-two per cent of the previous year's S4 year group attained three or more awards at SCQF level 6 (Higher) or better (Table 3).
- By the end of S6, nineteen per cent of the S4 year group from two years previously attained five or more awards at SCQF level 6 (Higher) or better. Twelve per cent obtained at least one award at SCQF level 7 (Advanced Higher) (Table 4).

Accumulation of awards over time:

- Thirty-four per cent of the S4 year group in 2004/05 gained five or more awards at SCQF level 5 (e.g. Standard Grade Credit) or better by the end of that year. By the end of S5 (2005/06), another eleven per cent of the same year group achieved this level and a further two per cent by the end of S6 (2006/07), resulting in a total of forty-seven per cent (Table 5).
- By the end of S5, ten per cent of the S4 year group in 2004/05 achieved five or more awards at SCQF level 6 (Higher) or better. A further nine per cent of this year group gained awards at this level by the end of S6 (Table 5).

Contents:

Table 1: *S4 Roll by year and gender*

Table 2: *S4 Attainment*

Table 3: *S5 Attainment*

Table 4: *S6 Attainment*

Chart 1: *S4 Attainment*

Chart 2: *S5 Attainment*

Chart 3: *S6 Attainment*

Table 5: *Attainment of the pupils who were in S4 in 2004/05, by the end of each stage*

Table 6: *S4 Attainment, by education authority*

Table 7: *S5 Attainment, by education authority*

Table 8 *S6 Attainment, by education authority*

Chart 4: *S4 Attainment: Percentage of roll with 5+ awards at SCQF 4 or better*

BACKGROUND NOTES

1. National Statistics Statement

This is a National Statistics publication. National Statistics are produced to high professional standards set out in the National Statistics Code of Practice. They undergo regular quality assurance reviews to ensure that they meet customer needs. They are produced free from any political interference. More information about the National Statistics standard is available on the Office for National Statistics website www.statistics.gov.uk/about/national_statistics.

2. Sources and Definitions

2.1 Sources

Data on National Qualifications were obtained from the Scottish Qualifications Authority (SQA). They do not take into account confirmed corrections to certification post August 2007.

School roll figures were obtained from the Scottish Government School Census as at September in the relevant year. Pupils entering or leaving the school after Census date may affect the percentages given for examination attainment. Roll figures include pupils in mainstream classes and in integrated SEN units.

Candidate Stage data (i.e. S4, S5, S6) was obtained, for the majority, from schools' management information systems. Stage was otherwise estimated to within approximately 0.5% chance of error.

2.2 Changes to National Qualifications

Two changes have recently been made to National Qualifications which may affect the attainment figures published this year.

Skills for work courses - Since 2006/07 "Skills for Work" courses have been widely available in secondary schools.

"Skills for Work" courses are practical courses designed to be an equivalent option to an existing qualification, such as a Standard Grade. The courses have been developed by the Scottish Qualifications Authority (SQA) to enable and encourage young people in S3 and above to develop important knowledge and skills, useful for both employment and for life. These courses are intended to provide pathways to employment, training or further education. Learning is mainly practical and takes place in schools, colleges and other work-related settings. Courses available during the period covered by this publication are at Access and Intermediate levels.

The courses have not had much impact on this years' figures as many of them are two year courses and so pupils beginning them last year will not finish until summer 2008. Some pupils took pilot courses which began in 2005/06 and these are included in the figures. From next year, "Skills for Work" courses are expected to make a more significant contribution to the attainment figures.

Derived Grades - In 2006/07, the SQA withdrew the “derived grades” element of its appeals process which in certain circumstances, provided an automatic appeal to improve a student’s result if there was a case for underperformance. In future these students will be expected to appeal through the normal appeals process.

This change will predominantly affect Standard Grade achievement as the majority of derived grades were for Standard Grades.

This year’s figures, which are pre-appeal, show that the percentage of S4 pupils achieving five or more awards at Standard Grade Credit level has fallen by two percentage points. There has been a similar fall at General Level (Table 2 and Table 2 from the 2005/06 publication). The end of derived grades contributes to this drop.

In previous years the post-appeals attainment figures have generally been only one or two percentage points higher than the pre-appeals figures. This year the difference may increase as the students who would have benefited from derived grades, instead increase the number of appeals.

For more information about derived grades see the “Review of Estimates, Derived Grades and Appeals” on the SQA website.

www.sqa.org.uk/sqa/controller?p_service=Content.show&p_applic=CCC&pContentID=15887

2.3 Changes to definitions

Between the academic years 2005/06 and 2006/07 a change was made to the way that attainment figures are calculated for students taking exams at centres other than their base school. The 2006/07 figures in this publication were calculated using the new definition whereas earlier figures use an older definition.

Before 2006/07 attainment statistics were based on the presenting centre only, i.e the centre where a student studied for and took the exam. From 2006/07 all awards are credited to the school or college at which a pupil is based. This means that pupils based in publicly funded schools who took courses in Further Education (FE) colleges or other centres will now be credited with any resulting awards, whereas previously they would not have been. As well as the national totals, this affects the local authority level figures as pupils taking courses at schools other than their base school may cross LA boundaries.

In 2006/07, of 720,000 NQ courses taken by pupils based in publicly funded secondary schools, 3,100 were in FE colleges or other centres. The results for these 3,100 courses would not previously have been recorded in these statistics but they do not significantly affect the national totals.

The new figures are published without a break in the series. It will however be useful to bear in mind that a change has been made when making detailed historic comparisons.

2.4 Definitions

National and education authority averages do not include independent or special schools. Education authority averages include education authority secondary schools only, whereas national averages include all publicly funded secondary schools.

For Standard Grade, only awards at 1-6 are included. Candidates are awarded a grade dependant on their performance against set criteria and there are 3 levels of award – credit (grades 1&2), general (grades 3&4) and foundation (grades 5&6). A '7' is awarded where a candidate completes/passes the course but not at a level of performance required to gain one of the other 6 grades.

The figures represent cumulative attainment by the end of each stage. For example, figures showing attainment by the end of S4 may include the results of Standard Grade or Intermediate courses completed by the same pupils when they were in S3.

In order to record the attainment of an entire year group, attainment in S5 and S6 is reported as a percentage of the relevant S4 roll. For example, attainment in S5 in 2006/07 is calculated as a percentage of the S4 roll in September 2005. S6 attainment is calculated from the S4 roll in September 2004. The roll figures are available in table 1.

The S5 staying on rates are calculated as the estimated January roll in S5 divided by the previous year's S4 roll as at September. The estimated January roll in S5 is calculated by subtracting the number of first term leavers in S5 from the September S5 roll. The S6 staying on rate is calculated by dividing the September S6 roll by the S4 roll two years before.

3. Notes

Examination results are an important indicator of performance, but not one that gives the full picture of education. These results should be considered alongside other indicators of pupils' progress, such as the quality of the learning experience and the ethos of the school.

Sometimes differences in the patterns of results from year to year may be due to fluctuations in pupils' abilities in different year groups rather than to any underlying trend in school performance. Furthermore, examination results for 2006/07 are pre-appeals whereas results for 2004/05 and 2005/06 are post-appeals. In past years, the post-appeal figures are generally no more than one percentage point higher than the equivalent pre-appeal figure.

Special schools providing for pupils with additional support needs are excluded from the data provided below. Those authorities without special schools will, therefore, have proportionately more pupils with additional support needs in mainstream schools and this can have a significant effect on attainment patterns. However, the overall effect is heavily dependent on the number of pupils and the nature of their additional support needs.

Staying on rates affect the potential of a year group to gain awards in S5 and S6; therefore, a low staying on rate may be part of the explanation for a low percentage of awards at these stages.

School level information will be published on www.scottishschoolsonline.gov.uk in December. A more detailed analysis of examination results, including trends in post-appeals attainment, will be published around February 2008.

4. Enquiries

Copies of the tables are available at www.scotland.gov.uk.

Public enquiries about the information contained in this Statistics Publication Notice should be addressed to:

(non-media) Tom Spencer, Analytical Services Unit - Schools,
1B (S) Victoria Quay, Edinburgh EH6 6QQ.
Tel. (0131) 244 4933
E-mail: educ.outcomes.stats@scotland.gsi.gov.uk

(media) Marion Mackay, Tel. (0131) 244 3070

Attainment by stage and gender: 2004/05, 2005/06, 2006/07

Table 1: S4 roll by year and gender

Year	Total	Male	Female
2001/02	59,998	30,600	29,398
2002/03	61,035	31,065	29,970
2003/04	60,446	30,698	29,748
2004/05	58,871	29,863	29,008
2005/06	61,190	31,112	30,078
2006/07	61,697	31,392	30,305

Table 2: S4 Attainment

Attainment by the end of S4 is calculated as a percentage of the S4 year group of that same year. See Table 1 for the roll figures which were used as a basis for calculation of the figures in this table. For graphical illustration see **Chart 1**.

Year	Percentage of the S4 year group achieving:			
	English and Maths at SCQF level 3 (e.g. Standard Grade Foundation) or better	5+ Awards at SCQF level 3 (e.g. Standard Grade Foundation) or better	5+ Awards at SCQF level 4 (e.g. Standard Grade General) or better	5+ Awards at SCQF level 5 (e.g. Standard Grade Credit) or better
2004/05				
Total	90	90	76	34
Male	90	89	73	30
Female	91	91	79	39
2005/06				
Total	91	91	77	35
Male	90	90	74	31
Female	92	92	80	39
2006/07				
Total	91	91	75	32
Male	90	90	72	29
Female	92	92	78	36

Note: 2007 figures are pre-appeal.

Table 3: S5 Attainment

Attainment by the end of S5 is calculated as a percentage of the S4 year group from the previous year. See Table 1 for the roll figures which were used as a basis for calculation of the figures in this table. For graphical illustration see **Chart 2**.

Year	Percentage of the S4 year group staying on to S5 (post Christmas)	Percentage of the S4 year group from the previous year achieving:		
		5+ Awards at SCQF level 5 (e.g. Standard Grade Credit) or better	1+ Awards at SCQF level 6 (e.g. Higher) or better	3+ Awards at SCQF level 6 (e.g. Higher) or better
2004/05				
Total	64	45	39	23
Male	60	40	35	20
Female	69	51	43	26
2005/06				
Total	64	45	38	22
Male	60	40	34	19
Female	68	50	42	25
2006/07				
Total	65	46	38	22
Male	60	41	34	19
Female	69	50	42	25

Table 4: S6 Attainment

Attainment by the end of S6 is calculated as a percentage of the S4 year group two years previously. See Table 1 for the roll figures which were used as a basis for calculation of the figures in this table. For graphical illustration see **Chart 3**.

Year	Percentage of the S4 year group staying on to S6	Percentage of the S4 year group two years previously achieving:		
		3+ Awards at SCQF level 6 (Higher) or better	5+ Awards at SCQF level 6 (Higher) or better	1+ Awards at SCQF level 7 (Advanced Higher) or better
2004/05				
Total	44	30	19	12
Male	40	26	17	11
Female	49	35	22	14
2005/06				
Total	44	30	20	13
Male	40	27	17	11
Female	48	34	22	14
2006/07				
Total	44	29	19	12
Male	40	26	16	11
Female	49	33	22	13

Note: 2007 figures are pre-appeal.

Chart 1: Attainment of all pupils by the end of S4 based on a percentage of the S4 year group of that same year

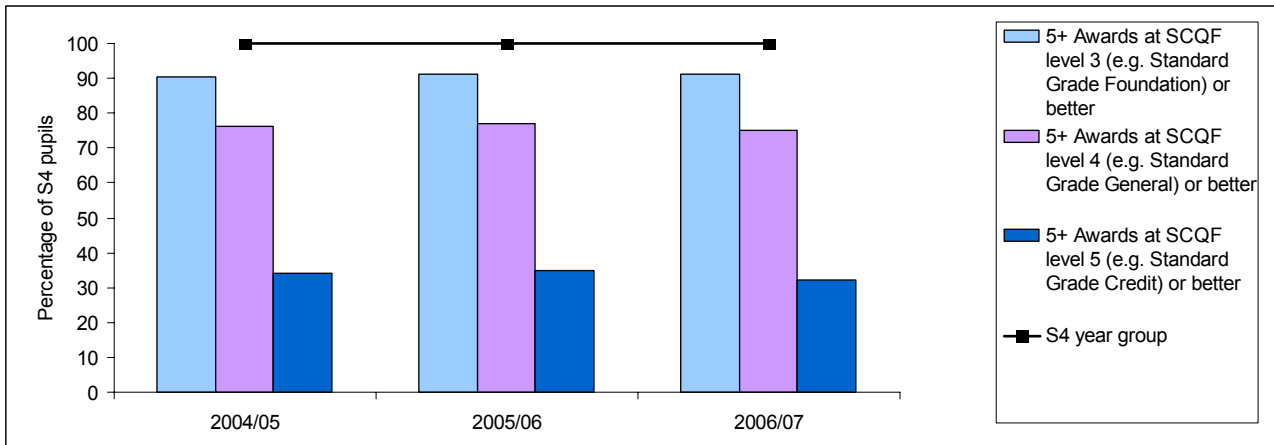


Chart 2: Attainment of all pupils by the end of S5 based on a percentage of the S4 year group from the previous year

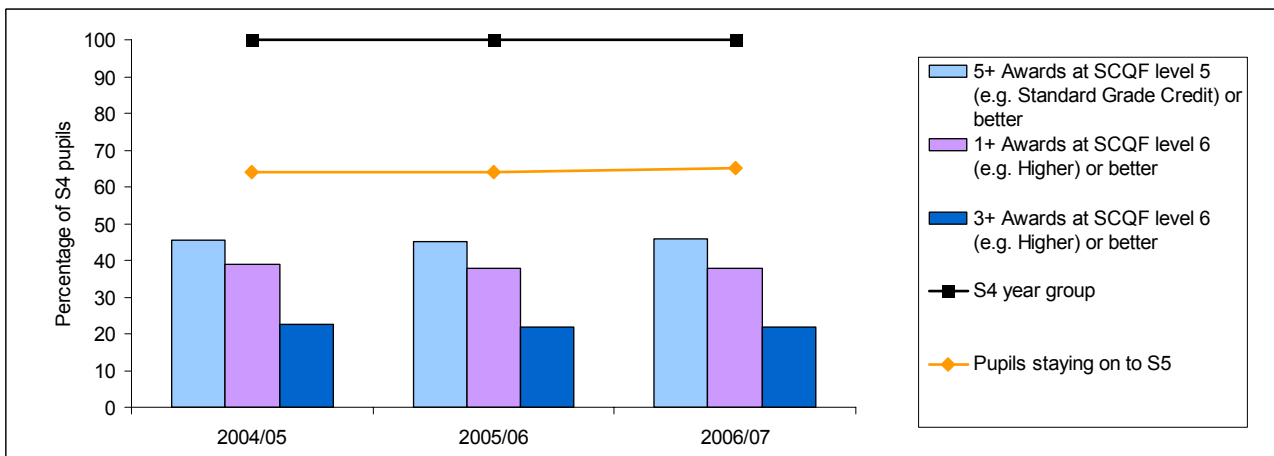
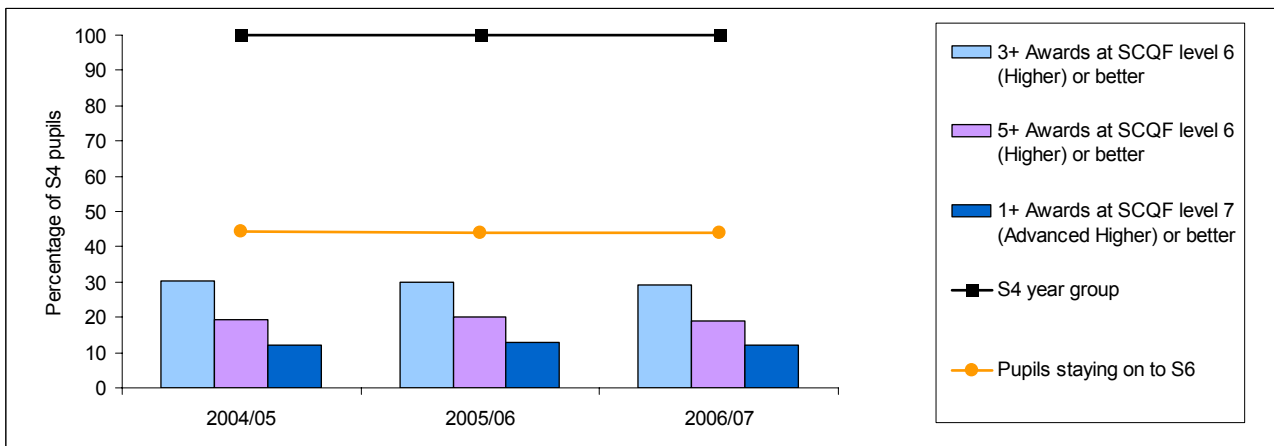


Chart 3: Attainment of all pupils by the end of S4 based on a percentage of the S4 year group of that same year



Note: 2007 figures are pre-appeal.

Cumulative attainment for a single year group

Table 5 allows the academic progression of an entire year group to be seen as they move through the various stages of high school education. Shown below are the achievements of the 58,871 pupils who started S4 in 2004/05 by the end of S4 (2004/05), S5 (2005/06) and S6 (2006/07). Note that not all 58,871 pupils stayed on to S5 and/or S6.

Table 5: Attainment of the pupils who were in S4 in 2004/05, by the end of each stage

Number of pupils in S4 in 2004/05	By end of Stage	Percentage of the S4 year group achieving:									
		English and Maths at SCQF level 3 or better	5+ Awards at SCQF level 3 or better	5+ Awards at SCQF level 4 or better	5+ Awards at SCQF level 5 or better	1+ Awards at SCQF level 6 or better	3+ Awards at SCQF level 6 or better	5+ Awards at SCQF level 6 or better	1+ Awards at SCQF level 7 or better		
Total	S4	90	90	76	34	0	0	0	0	0	0
58,871	S5	91	91	78	45	38	22	10	0	0	0
	S6	91	91	78	47	42	29	19	12	12	12
	S4	90	89	73	30	0	0	0	0	0	0
Male	S5	90	89	75	40	34	19	8	0	0	0
	S6	91	90	75	42	38	26	16	11	11	11
	S4	91	91	79	39	0	0	0	0	0	0
Female	S5	92	92	81	50	42	25	11	0	0	0
	S6	92	92	81	52	47	33	22	13	13	13
	S4	91	91	79	39	0	0	0	0	0	0

Table 6: S4 Attainment, by education authority

Attainment by the end of S4 is calculated as a percentage of the S4 year group of that same year. For graphical illustration see Chart 4.

Education Authority	S4 Roll as at September		Percentage of the S4 year group achieving:												
			English and Maths at SCQF level 3 (e.g. Standard Grade Foundation) or better		5+ Awards at SCQF level 3 (e.g. Standard Grade Foundation) or better		5+ Awards at SCQF level 4 (e.g. Standard Grade General) or better		5+ Awards at SCQF level 5 (e.g. Standard Grade Credit) or better						
	2004/05	2005/06	2006/07	2004/05	2005/06	2006/07	2004/05	2005/06	2006/07	2004/05	2005/06	2006/07			
Scotland	58,871	61,190	61,697	90	91	91	90	91	91	76	77	75	34	35	32
Aberdeen City	1,960	2,017	2,076	93	94	92	91	90	88	77	75	71	34	35	31
Aberdeenshire	2,985	3,133	3,154	95	95	94	94	94	93	86	85	84	44	43	40
Angus	1,297	1,416	1,438	92	89	93	91	89	90	79	76	74	36	33	32
Argyll & Bute	1,079	1,057	1,110	95	94	95	95	94	95	85	80	82	42	38	35
Clackmannanshire	555	576	604	82	90	89	84	88	90	72	71	71	31	28	28
Dumfries & Galloway	1,809	1,923	1,825	91	92	92	91	92	93	77	80	80	35	37	36
Dundee City	1,624	1,686	1,660	84	86	85	81	83	85	63	65	65	22	24	24
East Ayrshire	1,554	1,621	1,607	90	89	90	89	89	89	76	75	72	31	33	28
East Dunbartonshire	1,620	1,593	1,642	97	97	97	96	97	98	86	89	89	48	50	49
East Lothian	1,013	1,149	1,131	94	96	94	92	94	93	78	82	79	40	41	37
East Renfrewshire	1,360	1,379	1,363	91	83	88	97	96	94	91	87	86	59	54	57
Edinburgh City	3,723	3,831	3,875	89	91	90	87	89	89	74	75	75	35	34	33
Eilean Siar	356	371	346	91	95	94	90	93	91	80	83	77	39	39	36
Falkirk	1,619	1,789	1,766	89	82	90	89	88	89	72	73	72	29	31	30
Fife	4,244	4,327	4,353	90	92	89	90	91	89	75	76	73	32	32	28
Glasgow City	5,557	5,465	5,678	82	86	86	83	86	86	63	67	66	21	24	22
Highland	2,717	2,843	2,908	93	93	91	92	92	92	81	81	80	38	39	36
Inverclyde	1,053	1,059	1,034	92	92	94	95	94	95	78	80	80	33	33	33
Midlothian	1,015	1,107	1,089	91	94	96	89	91	92	75	78	79	31	30	31
Moray	1,100	1,132	1,181	94	94	94	93	92	93	80	80	82	34	36	34
North Ayrshire	1,675	1,811	1,823	91	90	91	91	88	90	72	69	69	31	29	28
North Lanarkshire	4,210	4,243	4,379	89	91	91	90	91	91	73	74	71	27	30	27
Orkney Islands	295	311	267	97	96	98	97	96	97	88	88	90	44	45	40
Perth & Kinross	1,351	1,576	1,513	89	89	92	90	90	90	78	77	74	38	38	34
Renfrewshire	2,132	2,270	2,168	91	94	94	91	93	92	77	80	78	37	38	35
Scottish Borders	1,289	1,407	1,396	91	92	93	92	90	91	81	81	81	40	38	39
Shetland Islands	295	349	312	98	94	95	97	93	95	89	85	88	43	45	41
South Ayrshire	1,402	1,403	1,416	93	93	92	93	92	90	77	77	76	39	38	35
South Lanarkshire	3,651	3,848	3,972	92	92	90	90	90	90	77	77	74	34	36	32
Stirling	1,089	1,086	1,151	91	93	89	90	90	90	79	76	75	42	42	38
West Dunbartonshire	1,124	1,225	1,202	90	91	90	93	91	88	77	76	68	28	32	27
West Lothian	2,019	2,089	2,159	95	95	94	92	93	94	77	80	75	33	36	33

Note: 2007 figures are pre-appeal.

Table 7: S5 Attainment, by education authority

Attainment by the end of S5 is calculated as a percentage of the S4 year group from the previous year.

Education Authority	Relevant S4 Roll as at September		Percentage of the S4 year group staying on to S5 (post Christmas)		Percentage of the S4 year group from the previous year achieving:										
	2003/04		2005/06		2004/05		2005/06		2006/07		3+ Awards at SCQF level 6 (Higher) or better				
	2003/04	2004/05	2005/06	2006/07	2004/05	2005/06	2006/07	2004/05	2005/06	2006/07	2004/05	2005/06	2006/07		
Scotland	60,446	58,871	61,190	65	64	64	64	45	45	46	39	38	23	22	22
Aberdeen City	2,105	1,960	2,017	63	60	63	63	45	45	45	39	39	24	22	24
Aberdeenshire	2,993	2,985	3,133	65	64	64	65	54	54	53	46	45	30	28	26
Angus	1,354	1,297	1,416	61	61	60	61	48	47	45	41	37	24	23	21
Argyll & Bute	1,034	1,079	1,057	69	74	77	69	47	54	50	41	40	20	26	21
Clackmannanshire	597	555	576	62	56	59	62	37	41	41	29	33	17	20	16
Dumfries & Galloway	1,884	1,809	1,923	66	61	60	66	48	46	47	41	40	25	22	23
Dundee City	1,697	1,624	1,686	57	55	54	57	34	32	33	29	30	15	15	16
East Ayrshire	1,497	1,554	1,621	60	65	59	60	44	40	42	36	36	19	18	19
East Dunbartonshire	1,691	1,620	1,593	75	76	75	75	58	59	61	49	53	33	33	35
East Lothian	1,058	1,013	1,149	66	67	65	66	49	51	51	41	42	25	26	25
East Renfrewshire	1,390	1,360	1,379	83	84	85	83	69	69	67	62	60	43	43	41
Edinburgh City	3,787	3,723	3,831	65	63	64	65	46	46	45	40	38	25	25	23
Eilean Siar	399	356	371	77	73	74	77	55	58	61	51	55	28	26	30
Falkirk	1,601	1,619	1,789	67	69	67	67	39	39	42	33	34	16	18	17
Fife	4,382	4,244	4,327	64	63	61	64	45	42	42	37	34	21	20	19
Glasgow City	5,541	5,557	5,465	56	55	54	56	32	31	33	27	28	13	12	14
Highland	2,762	2,717	2,843	71	71	68	71	51	50	51	43	43	25	26	23
Inverclyde	1,031	1,053	1,059	69	69	70	67	48	45	45	42	38	23	20	20
Midlothian	1,118	1,015	1,107	59	56	60	59	41	43	44	33	35	16	17	18
Moray	1,172	1,100	1,132	67	65	64	67	47	45	48	40	39	21	20	20
North Ayrshire	1,814	1,675	1,811	56	59	60	56	37	41	39	32	32	18	18	17
North Lanarkshire	4,257	4,210	4,243	61	60	62	61	40	39	41	35	34	19	15	17
Orkney Islands	259	295	311	70	66	66	70	58	57	60	49	49	30	28	28
Perth & Kinross	1,515	1,351	1,576	68	67	68	68	49	49	49	42	43	26	25	24
Renfrewshire	2,258	2,132	2,270	66	67	65	66	48	46	48	40	40	23	22	22
Scottish Borders	1,297	1,289	1,407	65	65	62	65	50	51	50	43	42	27	26	23
Shetland Islands	328	295	349	66	64	69	66	59	57	57	46	46	27	29	28
South Ayrshire	1,423	1,402	1,403	66	66	68	65	49	50	47	41	39	26	26	24
South Lanarkshire	3,772	3,651	3,848	66	65	65	66	46	45	47	40	39	24	22	24
Stirling	1,001	1,089	1,086	74	74	72	76	53	52	51	48	47	30	29	29
West Dunbartonshire	1,250	1,124	1,225	65	67	69	65	41	39	42	32	33	18	17	17
West Lothian	2,081	2,019	2,089	63	62	59	63	46	43	46	37	34	21	19	21

Note: 2007 figures are pre-appeal.

Table 8: S6 Attainment, by education authority

Attainment by the end of S6 is calculated as a percentage of the S4 year group two years previously.

Education Authority	Relevant S4 Roll as at September		Percentage of the S4 year group staying on to S6		Percentage of the S4 year group from two years previously achieving:		1+ Awards at SCQF level 7 (Advanced Higher) or better			
	2002/03	2003/04	2004/05	2005/06	2006/07	3+ Awards at SCQF level 6 (Higher) or better	5+ Awards at SCQF level 6 (Higher) or better	2004/05	2005/06	2006/07
Scotland	61,035	60,446	58,871	44	44	30	19	12	13	12
Aberdeen City	2,115	2,105	1,960	45	44	32	22	17	16	14
Aberdeenshire	3,030	2,993	2,985	43	44	37	25	17	16	16
Angus	1,342	1,354	1,297	42	43	32	23	15	14	13
Argyll & Bute	1,078	1,034	1,079	58	53	36	23	16	13	16
Clackmannanshire	594	597	555	39	37	22	12	9	12	15
Dumfries & Galloway	1,941	1,884	1,809	44	43	32	23	14	14	12
Dundee City	1,733	1,697	1,624	37	40	23	12	9	11	10
East Ayrshire	1,526	1,497	1,554	42	43	28	18	11	11	9
East Dunbartonshire	1,633	1,691	1,620	57	54	44	31	20	20	20
East Lothian	1,054	1,058	1,013	48	45	32	24	19	15	15
East Renfrewshire	1,300	1,390	1,360	65	65	52	40	22	24	22
Edinburgh City	3,851	3,787	3,723	47	48	32	22	14	15	15
Eilean Siar	352	399	356	54	53	40	20	11	15	15
Falkirk	1,637	1,601	1,619	47	43	23	16	9	11	11
Fife	4,513	4,382	4,244	44	44	28	19	13	13	12
Glasgow City	5,727	5,541	5,557	33	33	19	10	5	6	5
Highland	2,763	2,762	2,717	50	49	33	24	14	14	13
Inverclyde	1,092	1,031	1,053	48	50	31	16	11	15	10
Midlothian	1,073	1,118	1,015	39	41	25	15	12	13	13
Moray	1,110	1,172	1,100	43	43	29	18	11	12	11
North Ayrshire	1,813	1,814	1,675	38	39	23	15	8	7	8
North Lanarkshire	4,336	4,257	4,210	41	42	27	14	7	8	7
Orkney Islands	289	259	295	43	44	31	20	18	17	20
Perth & Kinross	1,451	1,515	1,351	48	50	34	21	15	16	16
Renfrewshire	2,270	2,258	2,132	43	43	30	20	11	12	11
Scottish Borders	1,301	1,297	1,289	51	48	34	22	16	15	14
Shetland Islands	340	328	295	44	43	34	26	15	12	12
South Ayrshire	1,433	1,423	1,402	49	48	33	22	14	14	13
South Lanarkshire	3,790	3,772	3,657	44	45	31	19	9	11	10
Stirling	1,121	1,001	1,089	55	57	39	27	16	15	15
West Dunbartonshire	1,308	1,250	1,124	43	41	26	15	8	8	6
West Lothian	2,021	2,081	2,019	40	43	29	16	11	12	10

Note: 2007 figures are pre-appeal.

S4: Percentage of roll with 5+ awards at SCQF 4 or better, 2006/07 (eg Standard Grade general level)

