

Sectoral Plan for Offshore Wind Energy

David Pratt
Head of Planning & Strategy



marine scotland

Marine Scotland and Crown Estate Scotland

marinescotland

**Marine Planning
and Licensing
Authority**



**Crown Estate
Scotland**
Oighreachd a' Chrùin Alba

**Seabed Leasing
Agency**

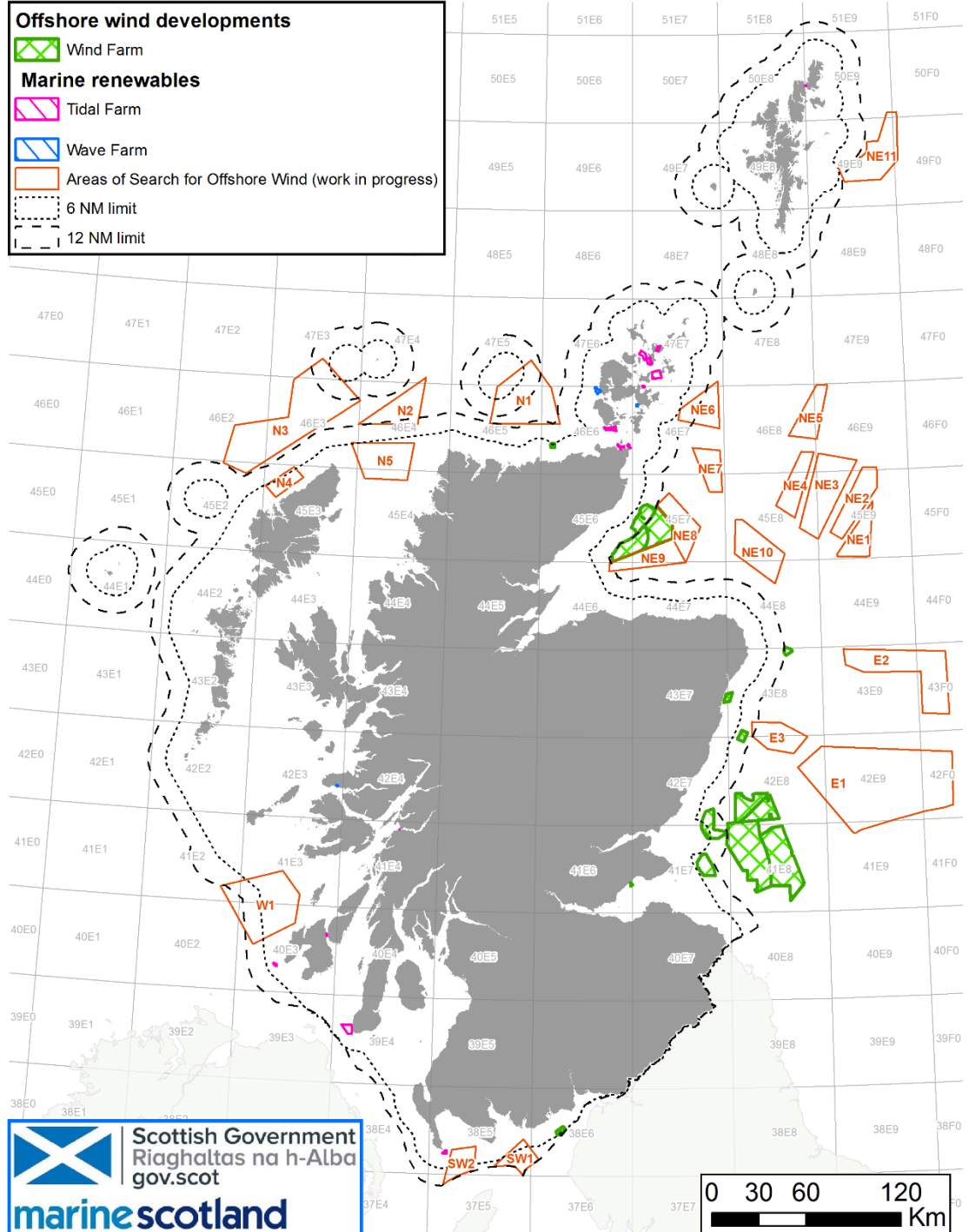
Offshore Renewables Planning & Licensing

Offshore wind developments

- Wind Farm

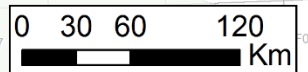
Marine renewables

- Tidal Farm
- Wave Farm
- Areas of Search for Offshore Wind (work in progress)
- 6 NM limit
- 12 NM limit



Scottish Government
Riaghaltas na h-Alba
gov.scot

marinescotland



Sectoral Marine Plans

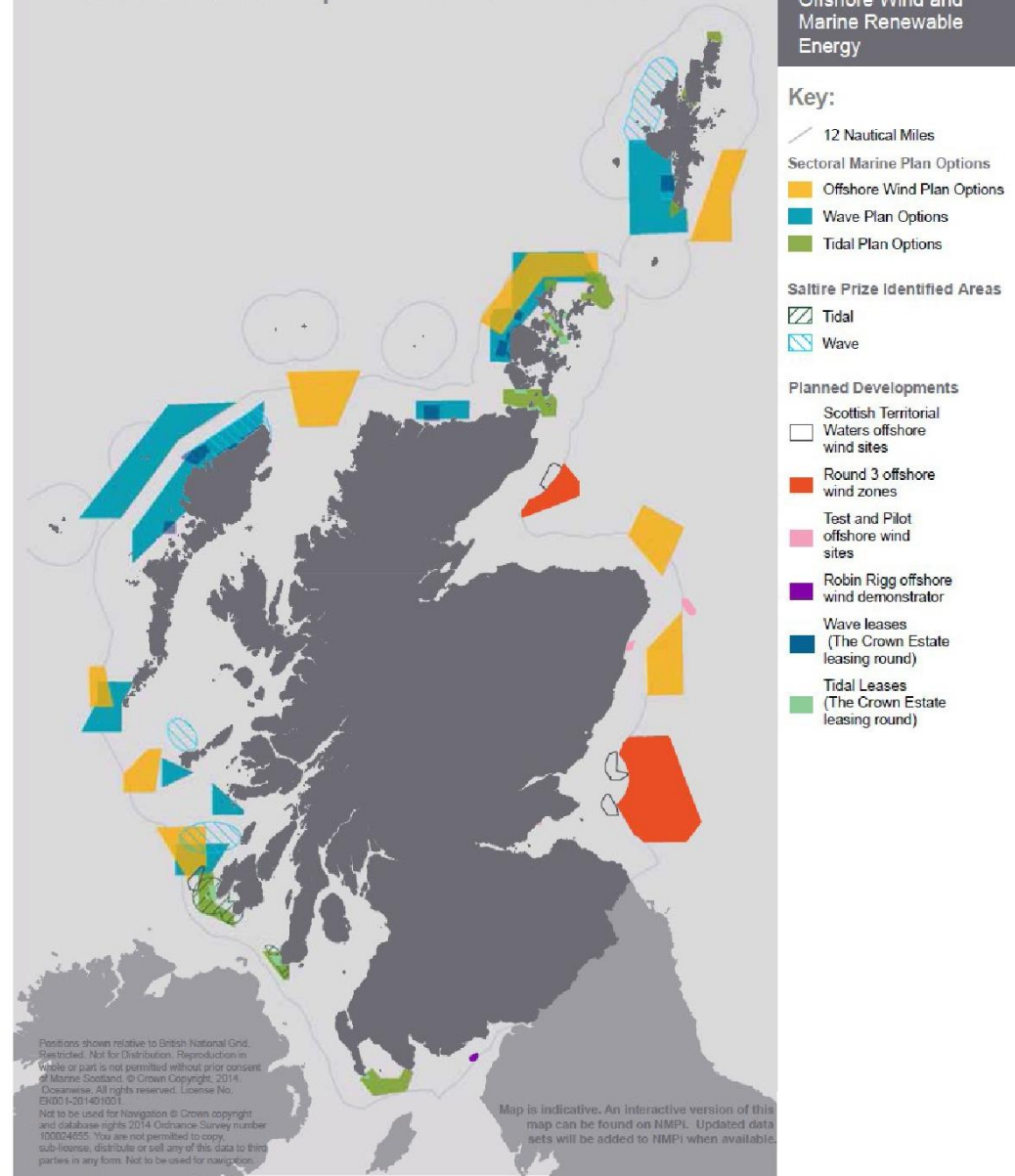
Offshore Wind
Wave
Tidal

Planned
Developments

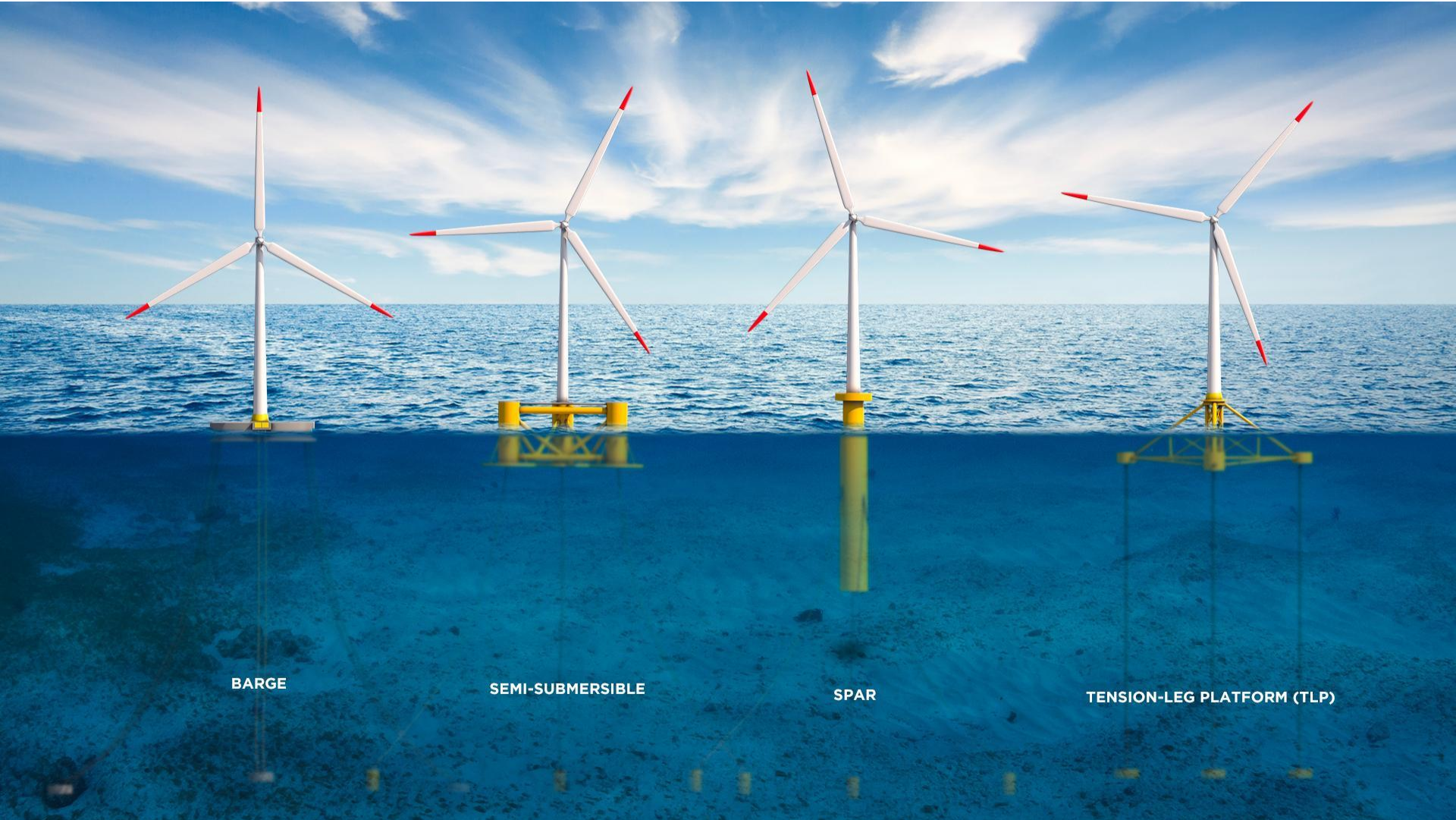
Consultation
Analysis & Post-
Adoption Statement

Map 9

Plan Options for Offshore Wind and Marine Renewable Energy and Planned developments in Scotland



Floating Offshore Wind



NEXT GENERATION TURBINES

12 MW capacity

220-meter rotor

107-meter long blades

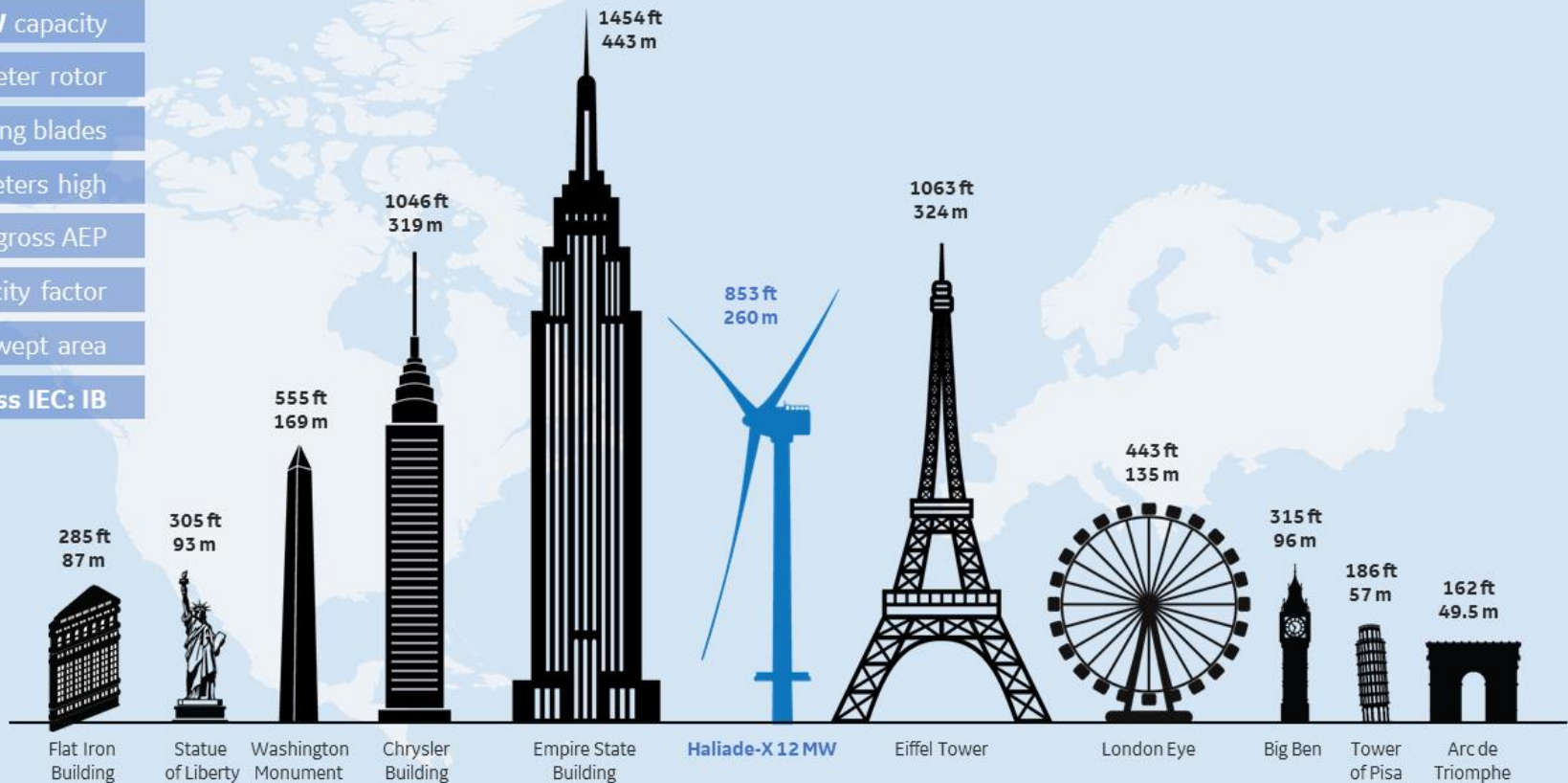
260 meters high

67 GWh gross AEP

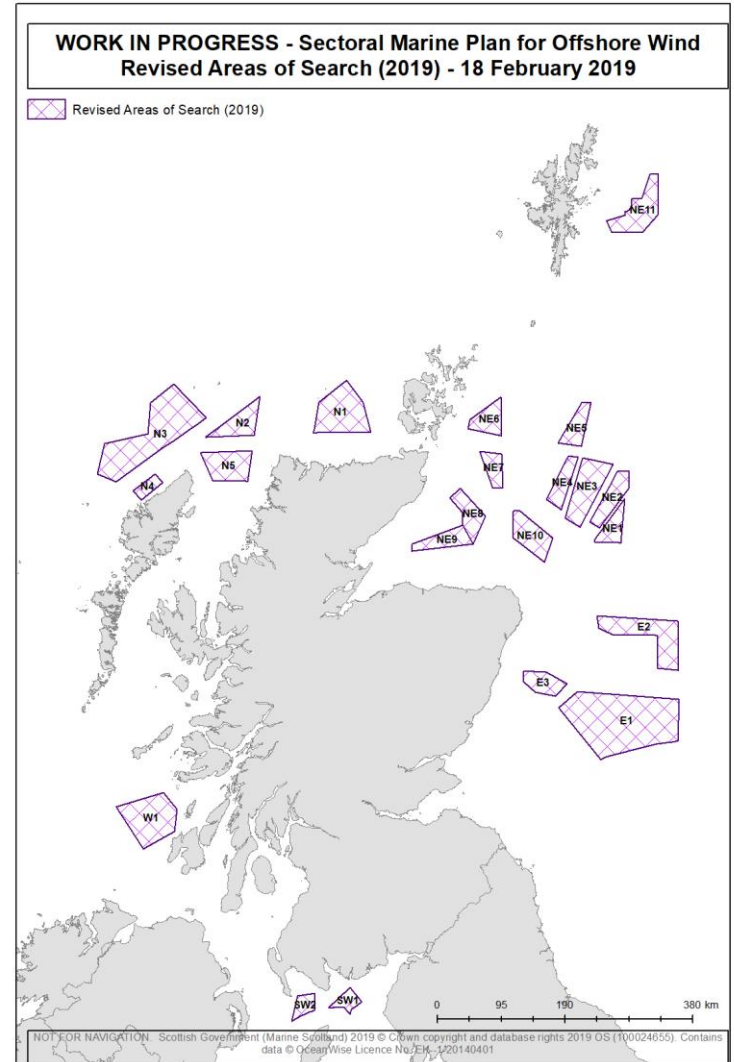
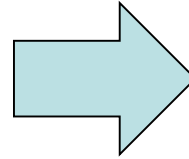
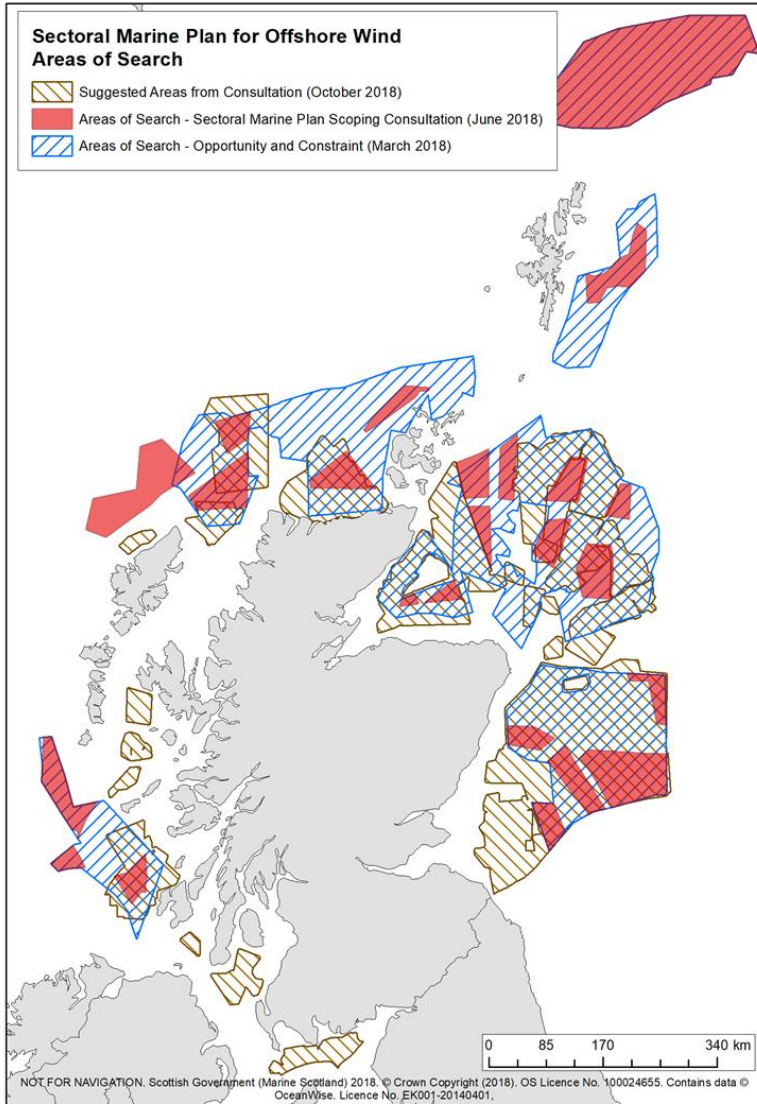
63% capacity factor

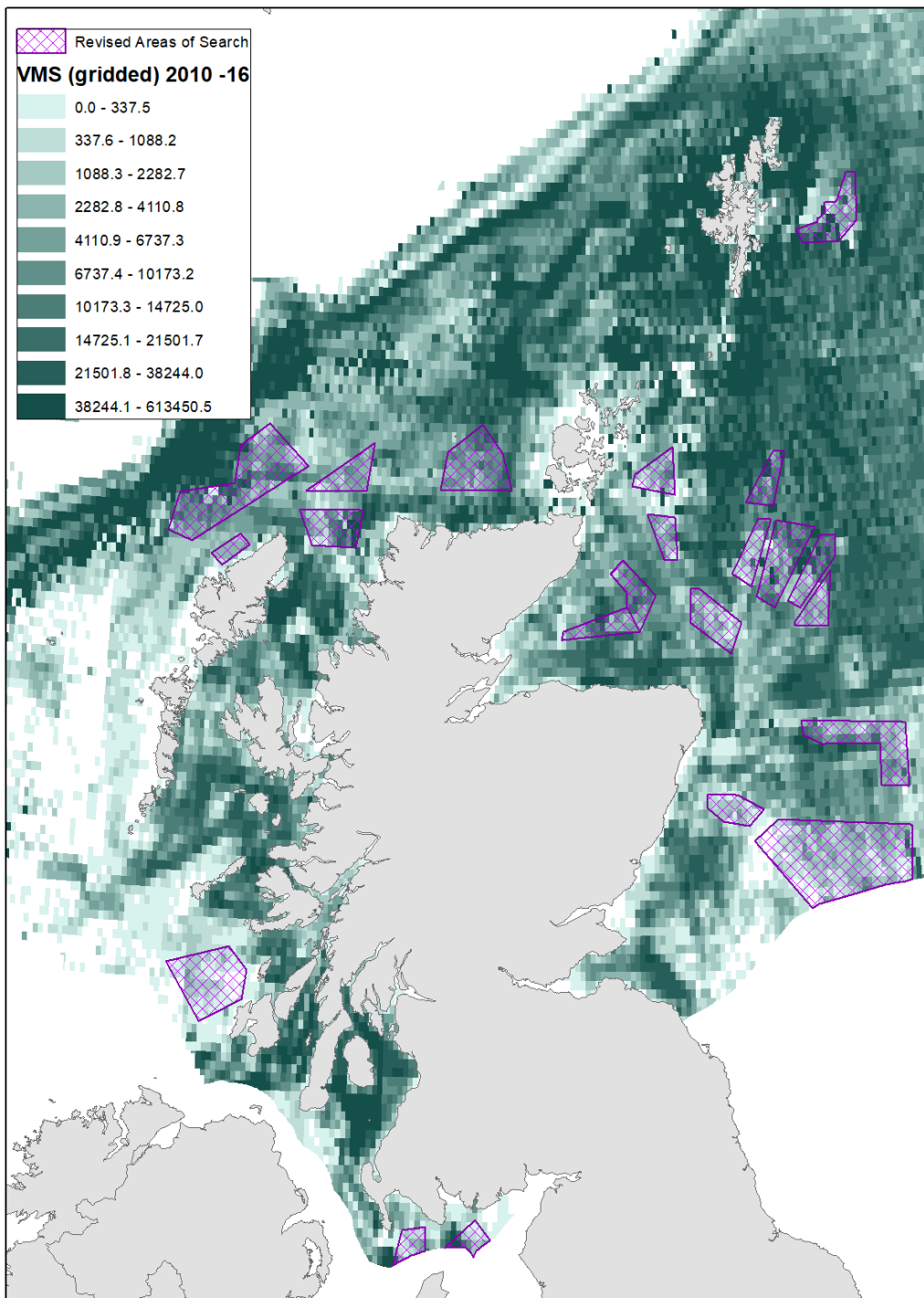
38,000 m² swept area

Wind Class IEC: IB



Areas of Search – Progress to date.....



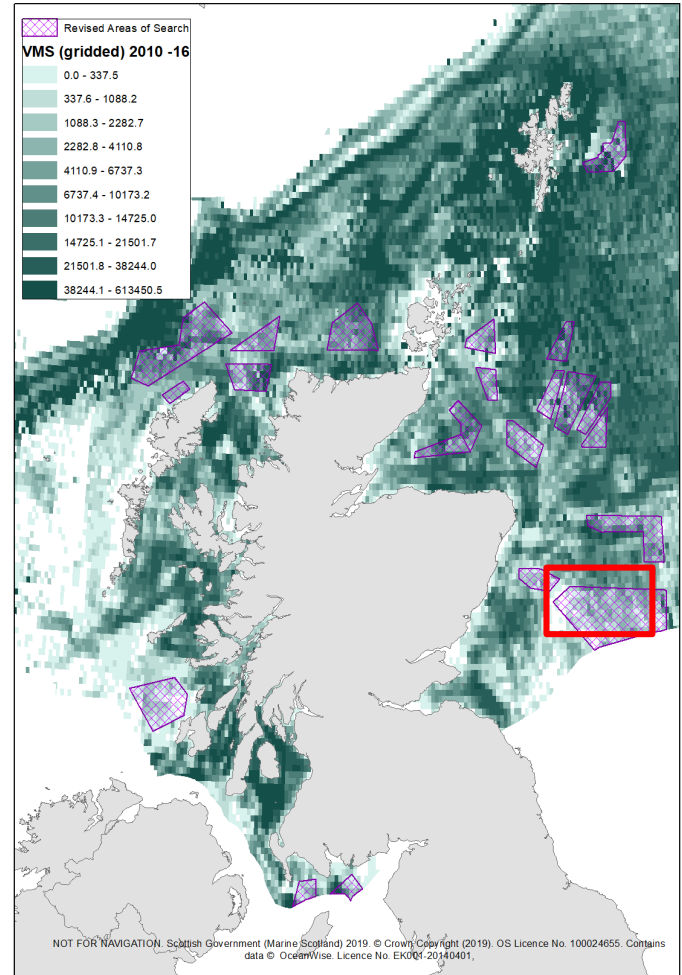


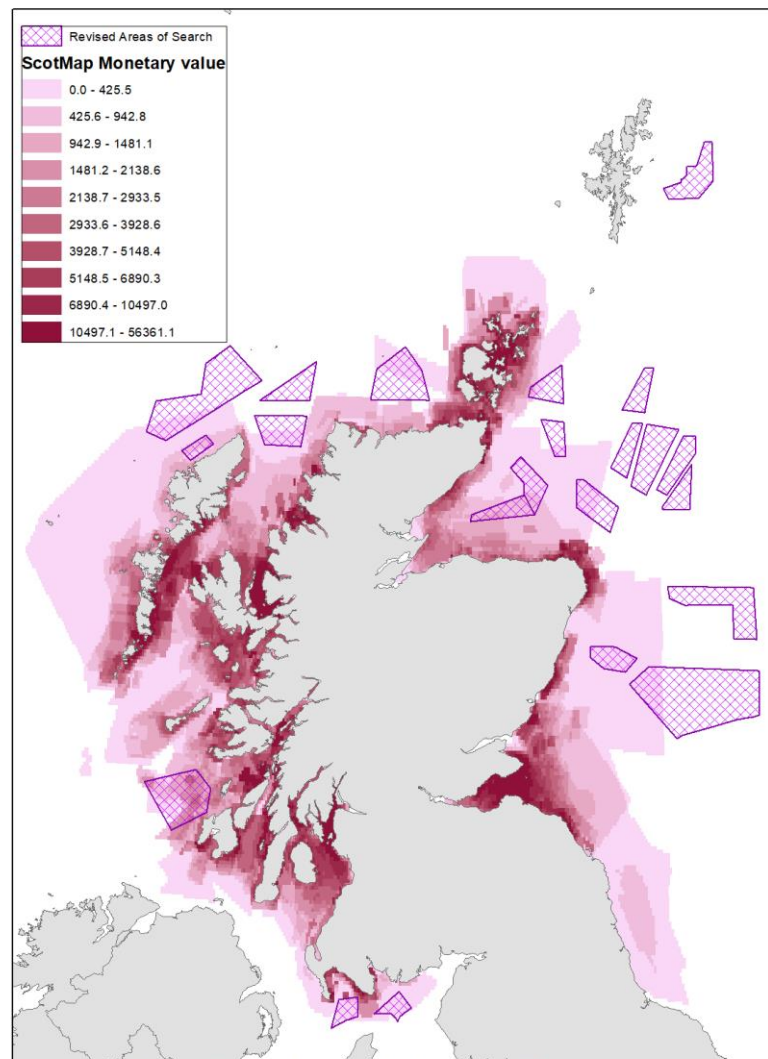
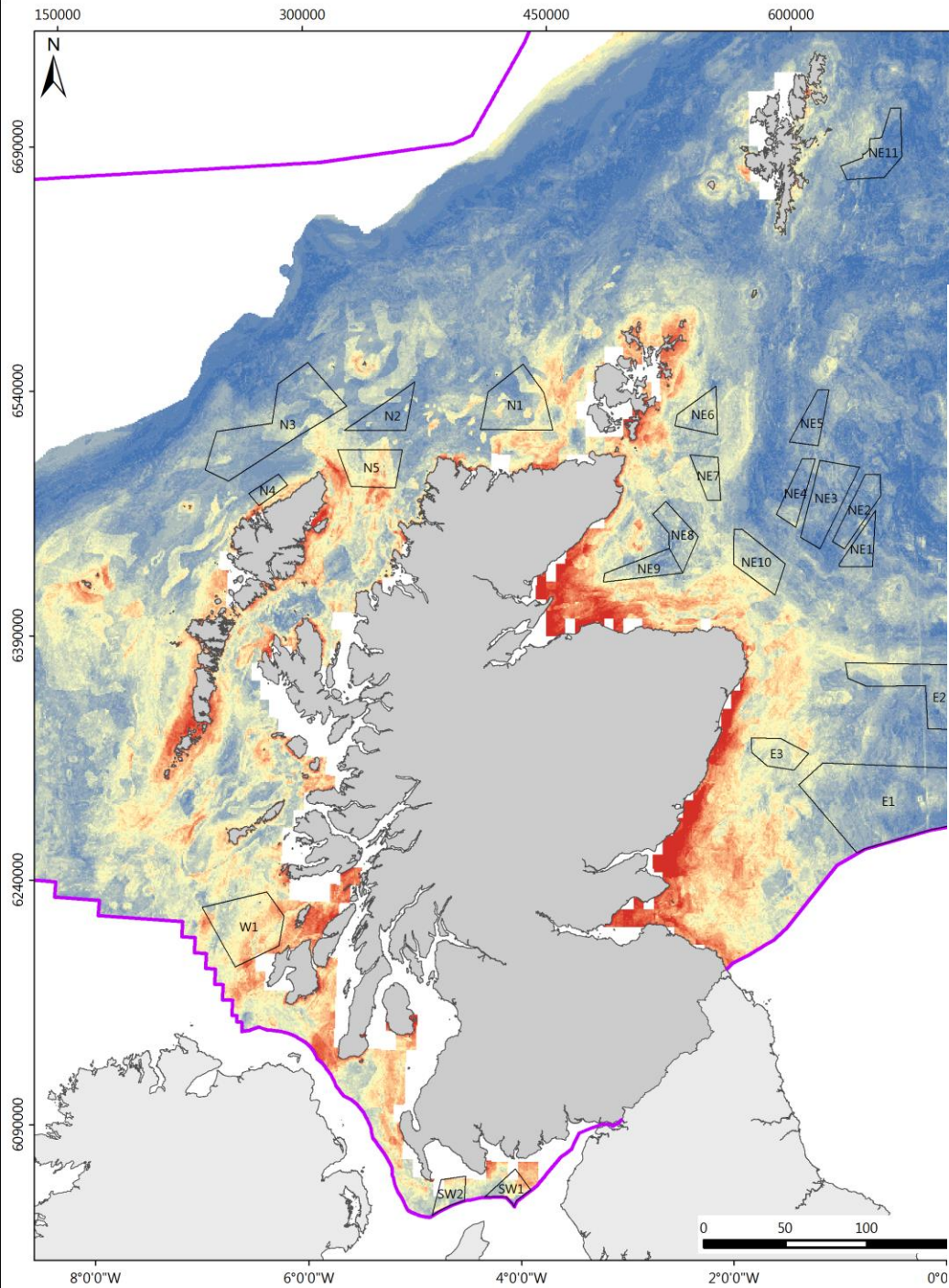
Fisheries Data

VMS (>12m)
AIS (<10m)
ScotMap
Fish1

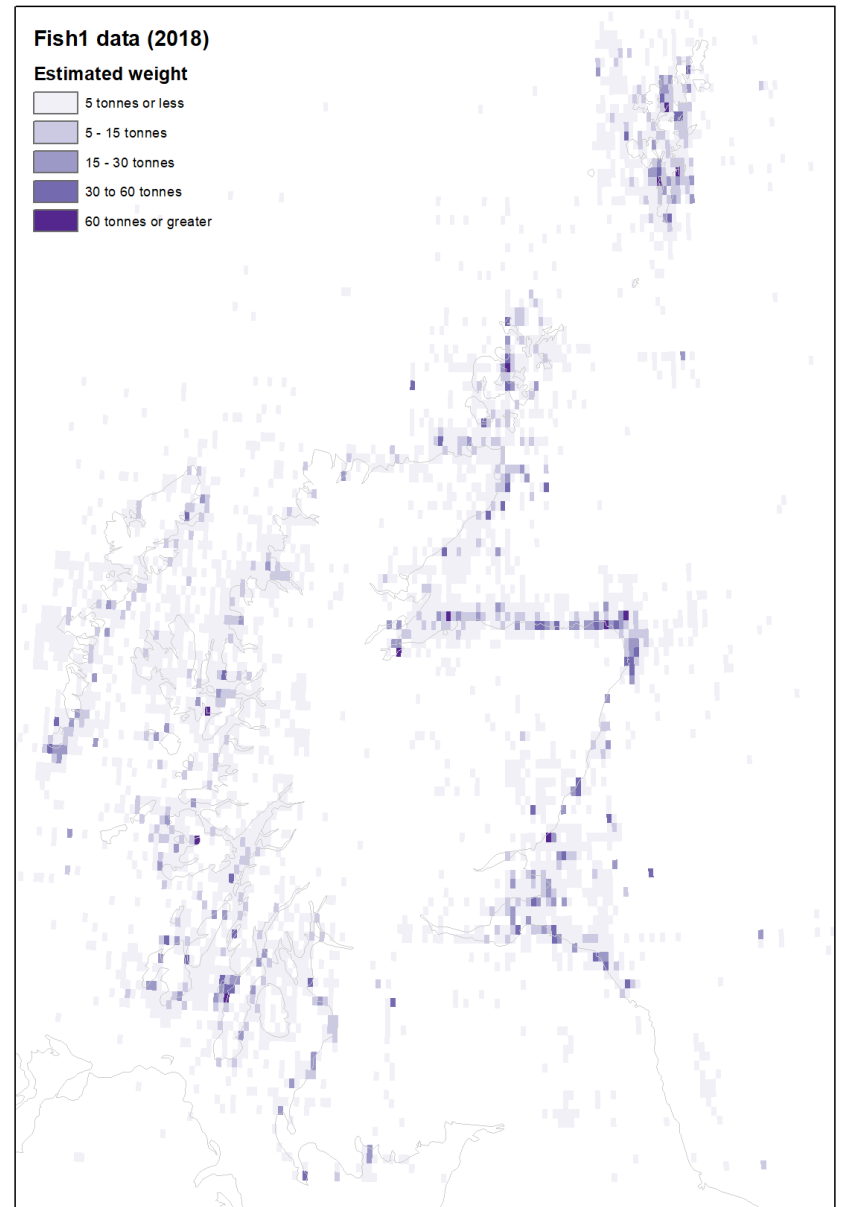
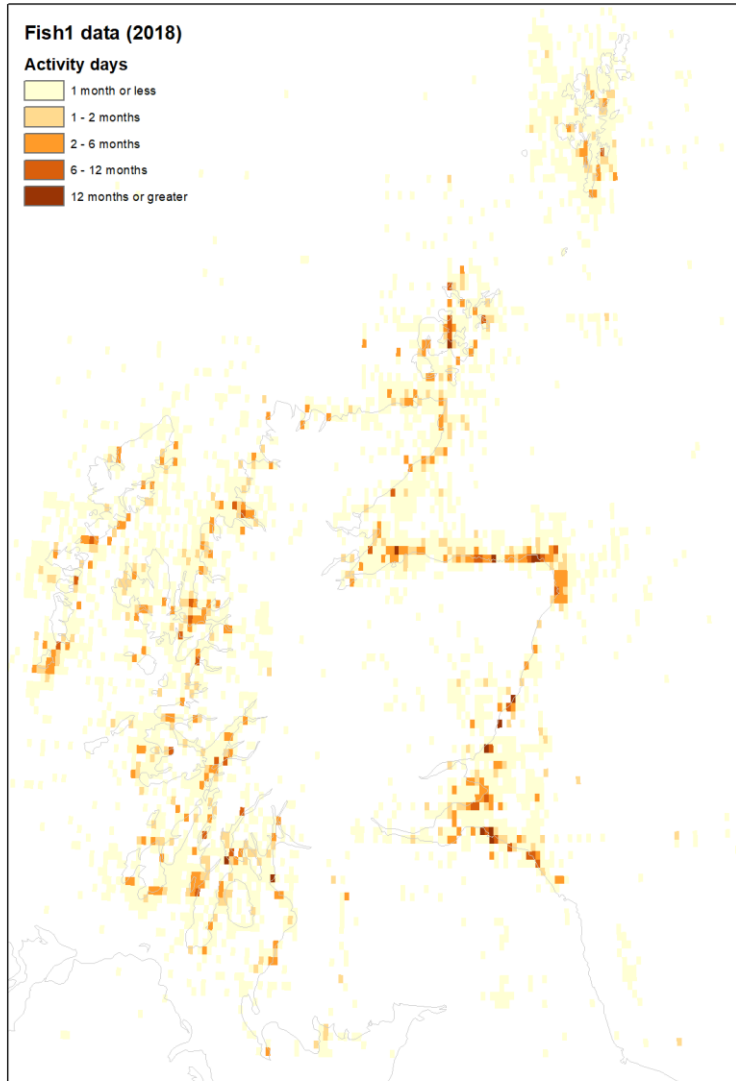
Stakeholder
Engagement

marinescotland





Fish1 Data

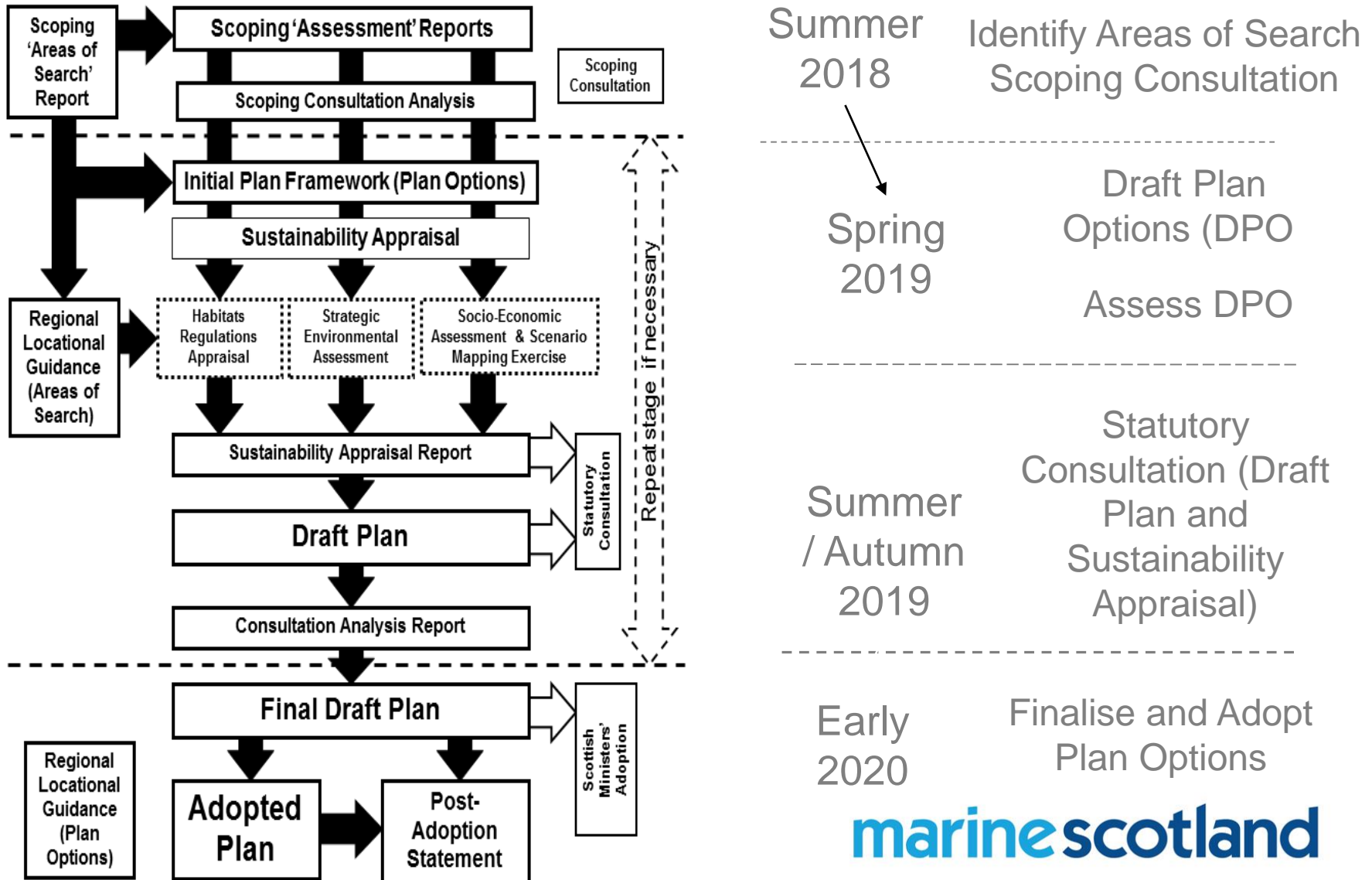


Engagement and Challenges

- Industry Representation – RIFGs / SFF / SWFPA on Project Steering Group
- Industry Engagement Workshops – Past and Future
- Statutory Consultation

- Addressing Data Gaps – 10-12m Vessels / Plotter Data
- Target Regional Consultation
- Bi-laterals with MS Local and National Offices

Sectoral Marine Plan Process



Questions

