

Homelessness in Scotland: Bi-annual update

5th February 2019

Applications

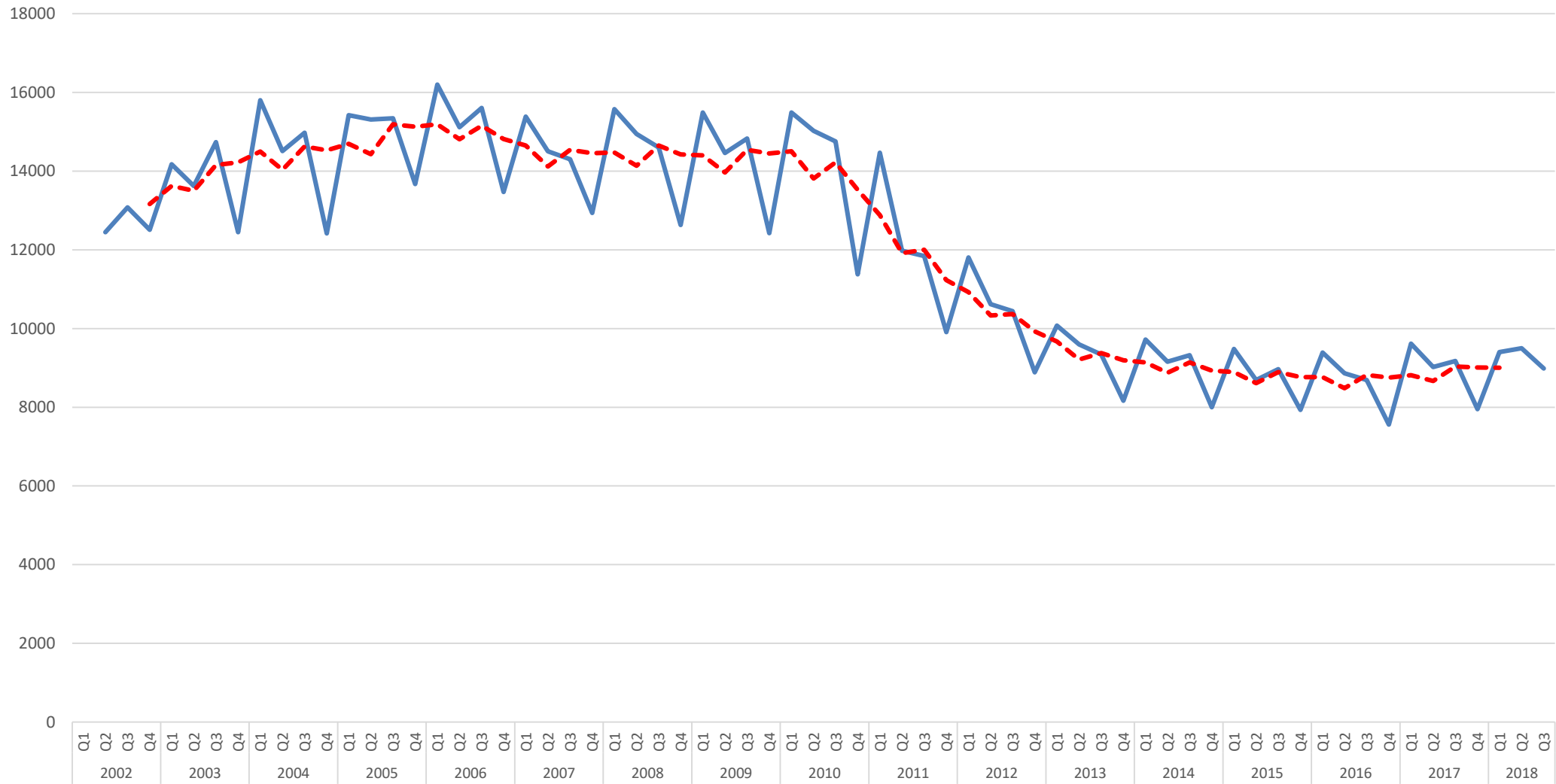
In the 6 months to September 2018:

- 18,486 applications for homelessness assistance, a rise of 286 (2%) on the same period in 2017.

In the 12 months to September 2018:

- 35,378 applications, an increase of 460 (1.3%) on the same period to September 2017
- Largest increase in North Lanarkshire saw an increase of 452 applications (23%)
- Largest decrease seen in South Lanarkshire, which fell by 226 applications (11%).

Chart 1: Number of applications for homelessness assistance in Scotland, by quarter, April 2002 to September 2018



— Applications - - - Five quarter centred moving average

Assessments

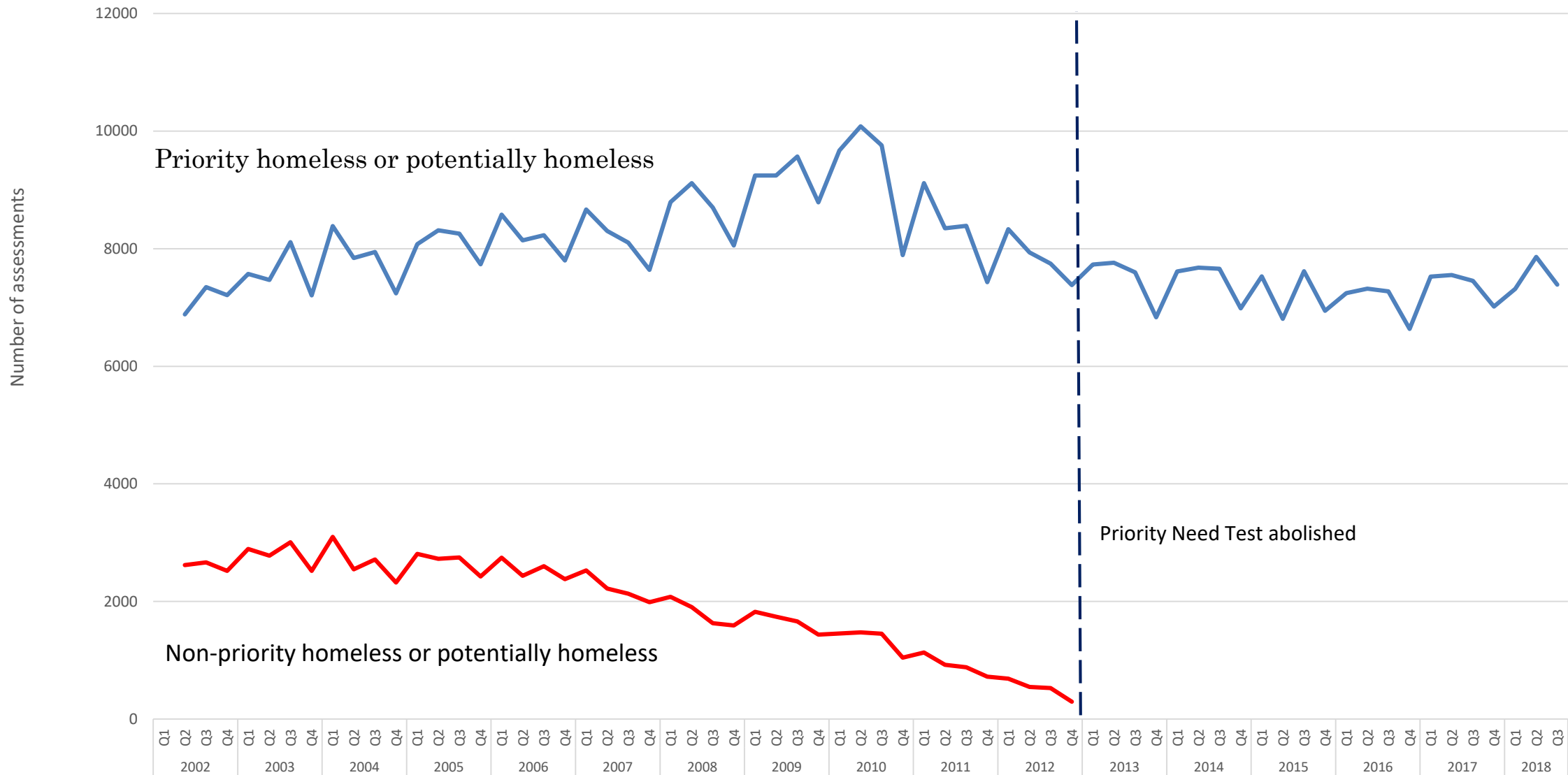
In the 6 months to September 2018:

- 18,499 homelessness assessments were made, an increase of 346 (2%).
- Of these, 15,247 (82%) were assessed as homeless or threatened with homelessness.

In the 12 months to September 2018:

- 35,837 assessments were made, an increase of 694 (2%).
- Of these, 29,580 (83%) were assessed as homeless or threatened with homelessness.

Chart 2: Homelessness Assessments in Scotland, by quarter, April 2002 to September 2018

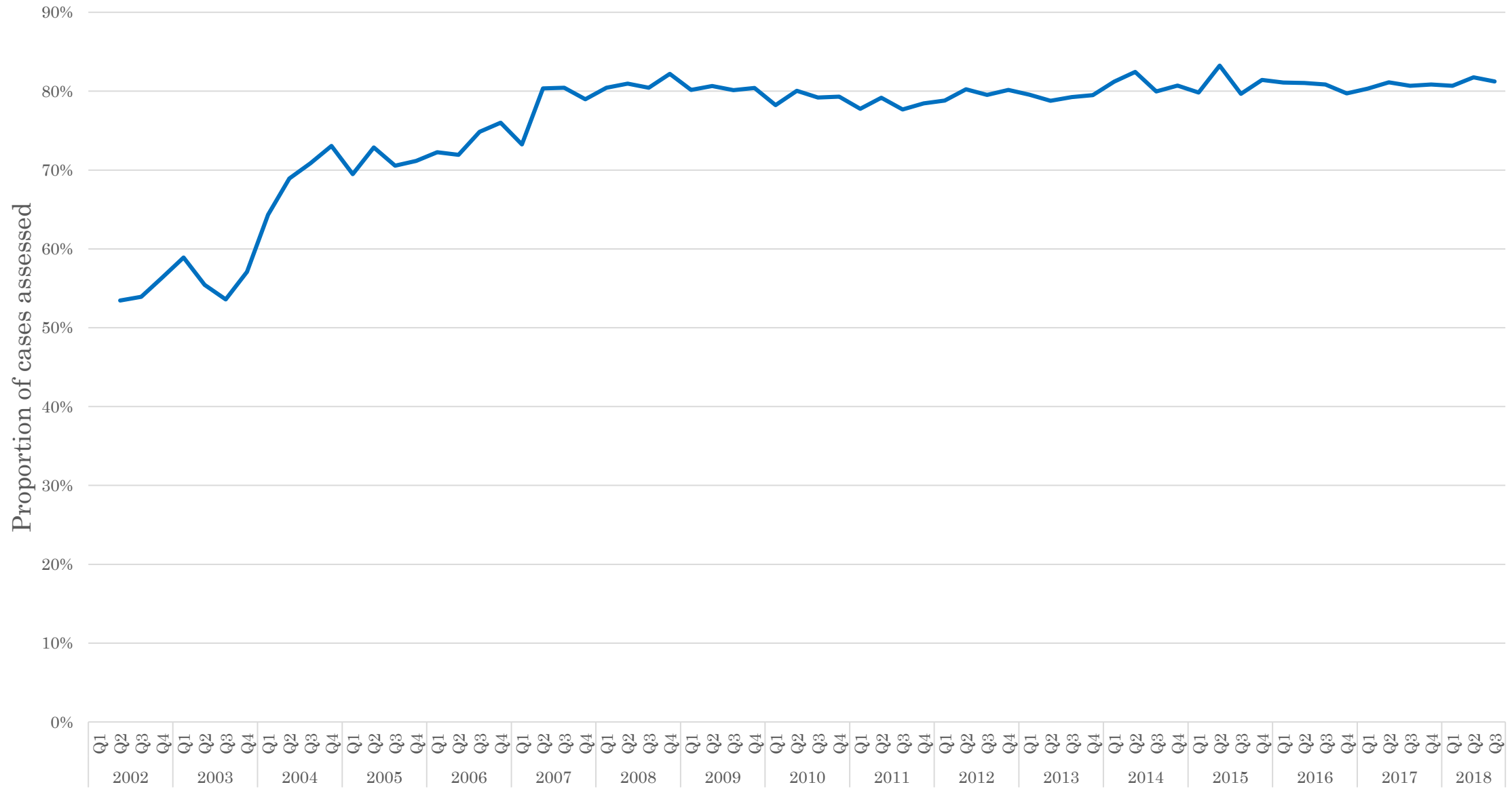


Outcomes

Of the 11,480 unintentionally homeless households that had an outcome:

- Around four out of five households (9,360 households or 82%) secured settled accommodation.
- This proportion of households securing settled accommodation has been at a roughly constant level of around four out of five in each quarterly period over the last decade.

Chart 4A: Percentage of cases assessed as unintentionally homeless [and in priority need], securing settled accommodation and where contact was maintained to duty discharge, by quarter, April 2002 to September 2018



Temporary Accommodation

As of 30 September 2018:

- There were 10,955 households in temporary accommodation, an increase of 56 households (0.5%) since last year.
- Of these households in temporary accommodation, 3,315 had children – a decrease of 111 households (-3%) compared with one year earlier.
- The number of children in temporary accommodation increased by 245 children (+4%), to 6,826, compared with the same date one year ago.

Temporary Accommodation

For the six-month period of 1 April to 30 September 2018:

- 10,475 unique households (i.e. households who entered multiple placements are counted only once) entered temporary accommodation and 10,930 exited temporary accommodation.
- The majority of households entering and exiting temporary accommodation were single person households (68% entering and 69% exiting), while around a quarter (26% entering and 25% exiting) contained children.
- Households in temporary accommodation spent an average of 178 days (just under six months) in temporary accommodation.
- Households with children tend to be in temporary accommodation for longer (216 days) compared to households without children (167 days).

Chart 7: Households in temporary accommodation

