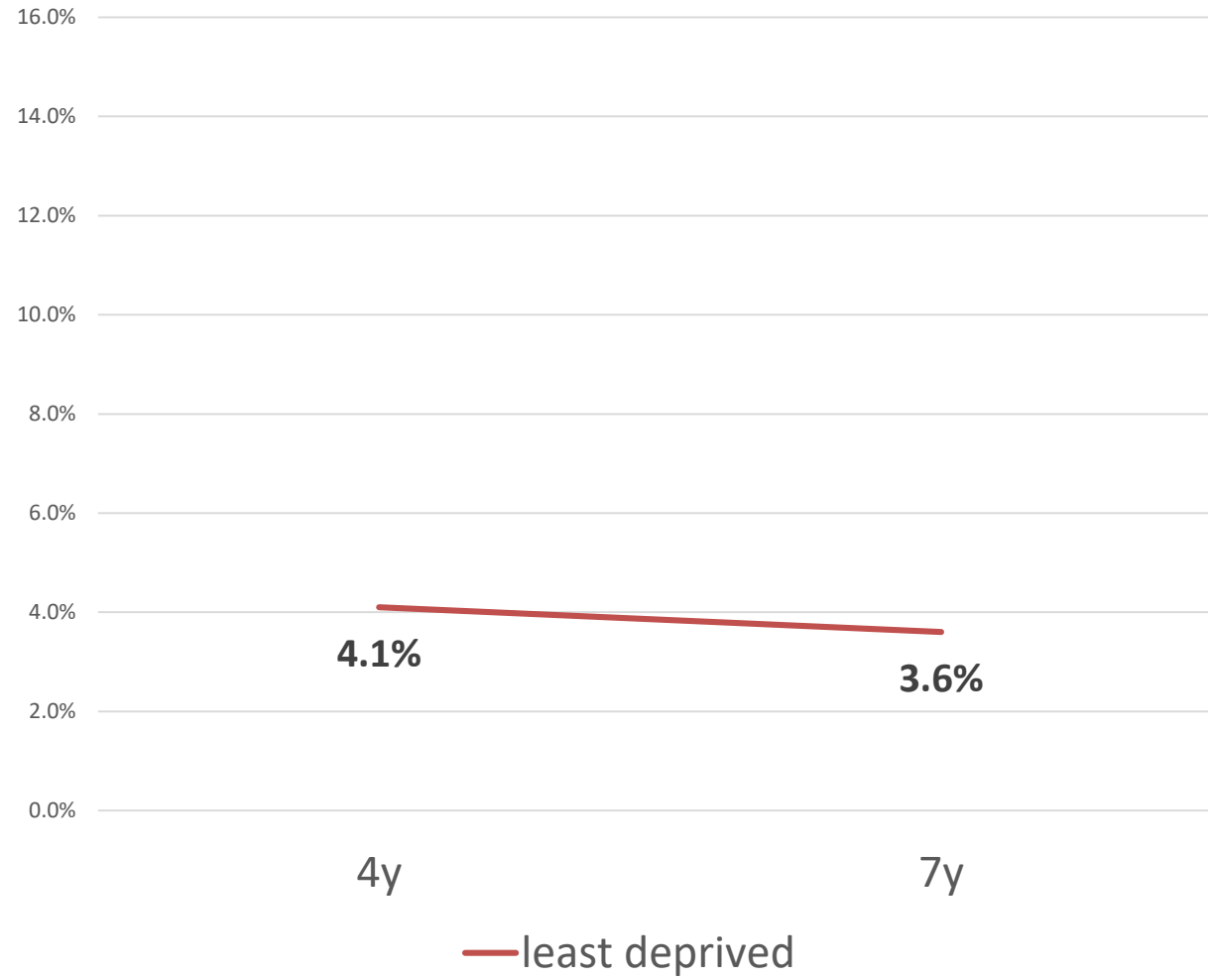


Capabilities and inclusion: foundations of good mental health

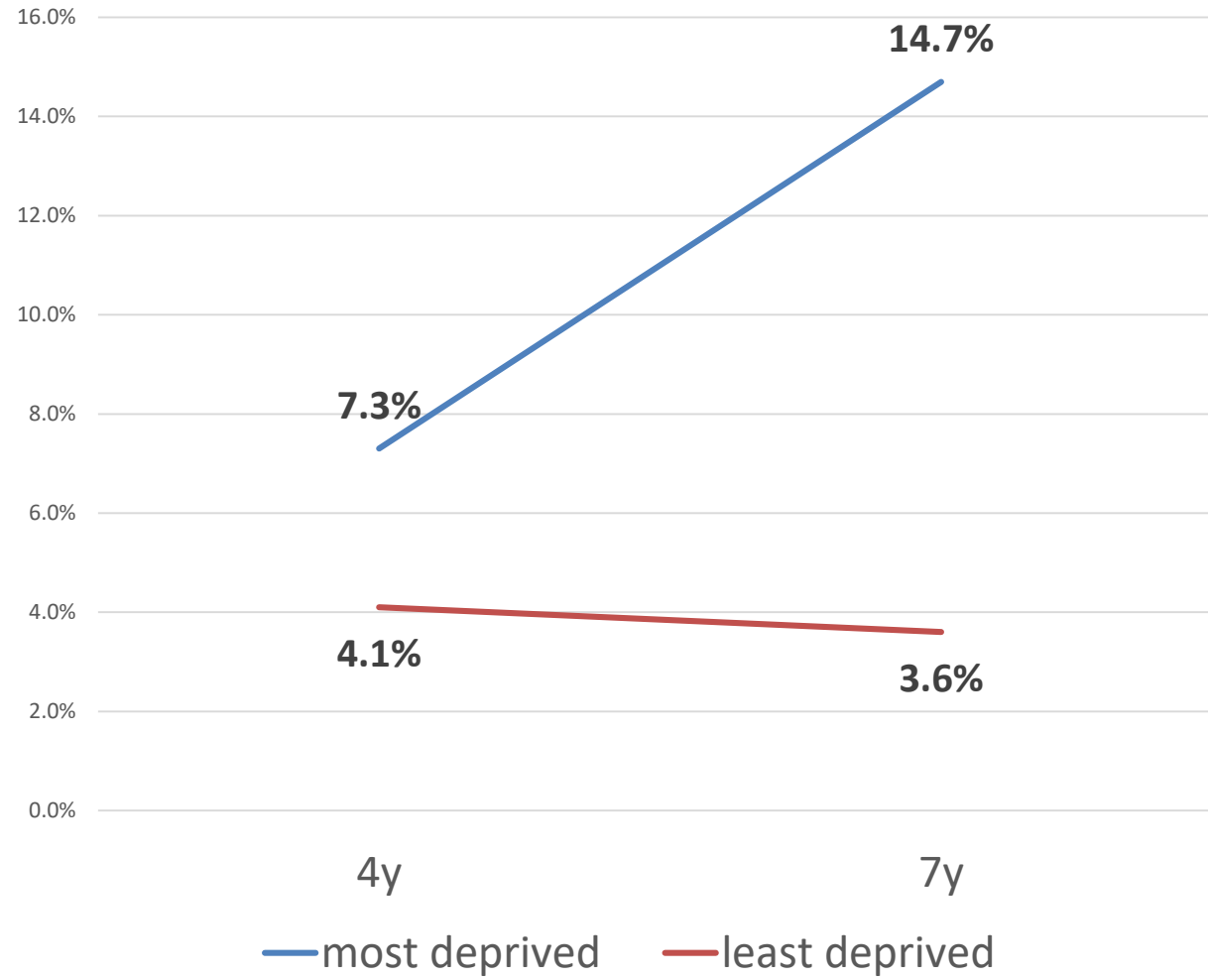
Dr Michael Smith,
Associate Medical Director, MH Services,
NHS Greater Glasgow & Clyde

- Socio-economic influences on MH
- Tackling causes: preventing what?
- Capabilities approach
- Successes in Scotland – and a challenge

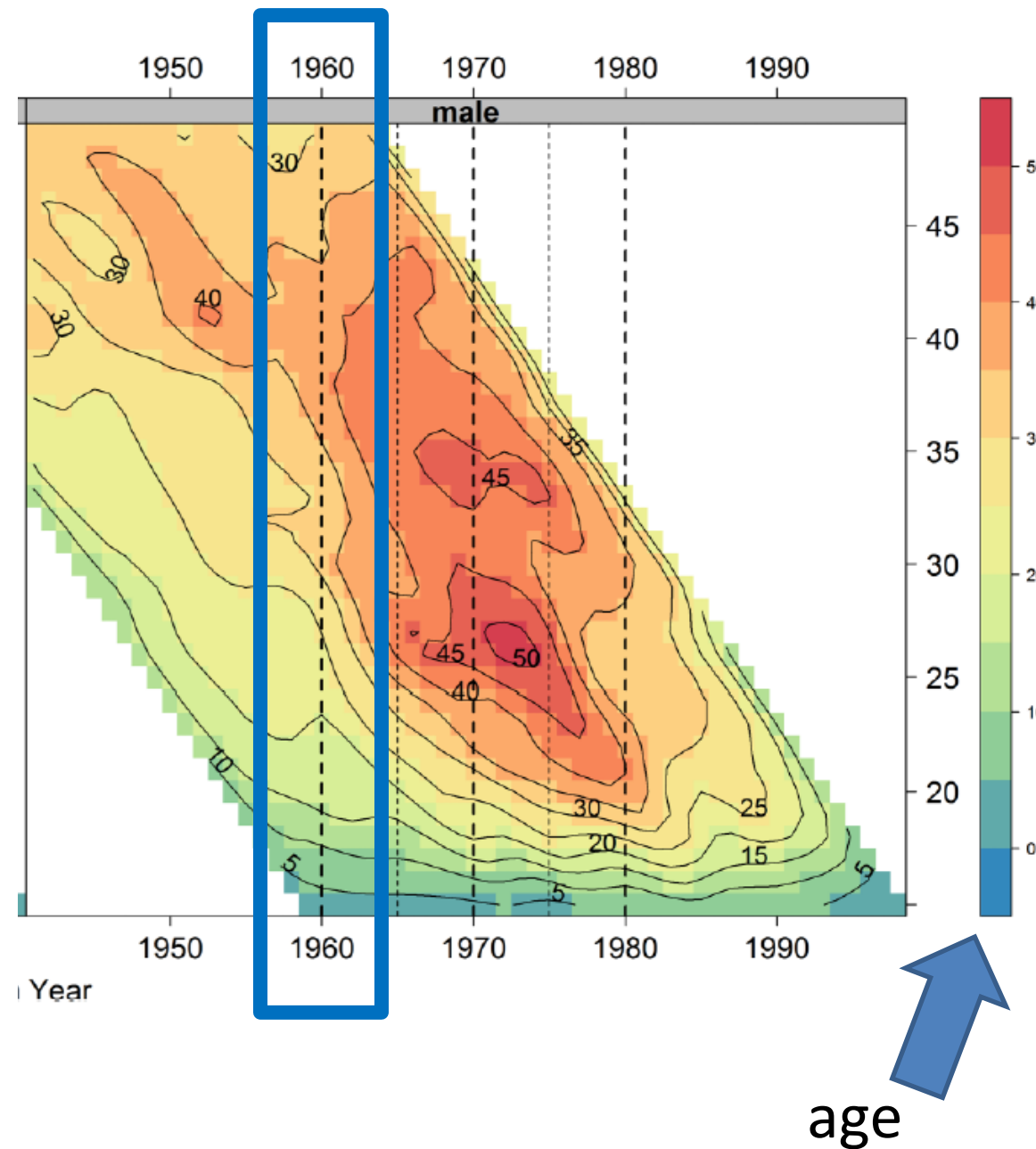
% children with probable psychological problems



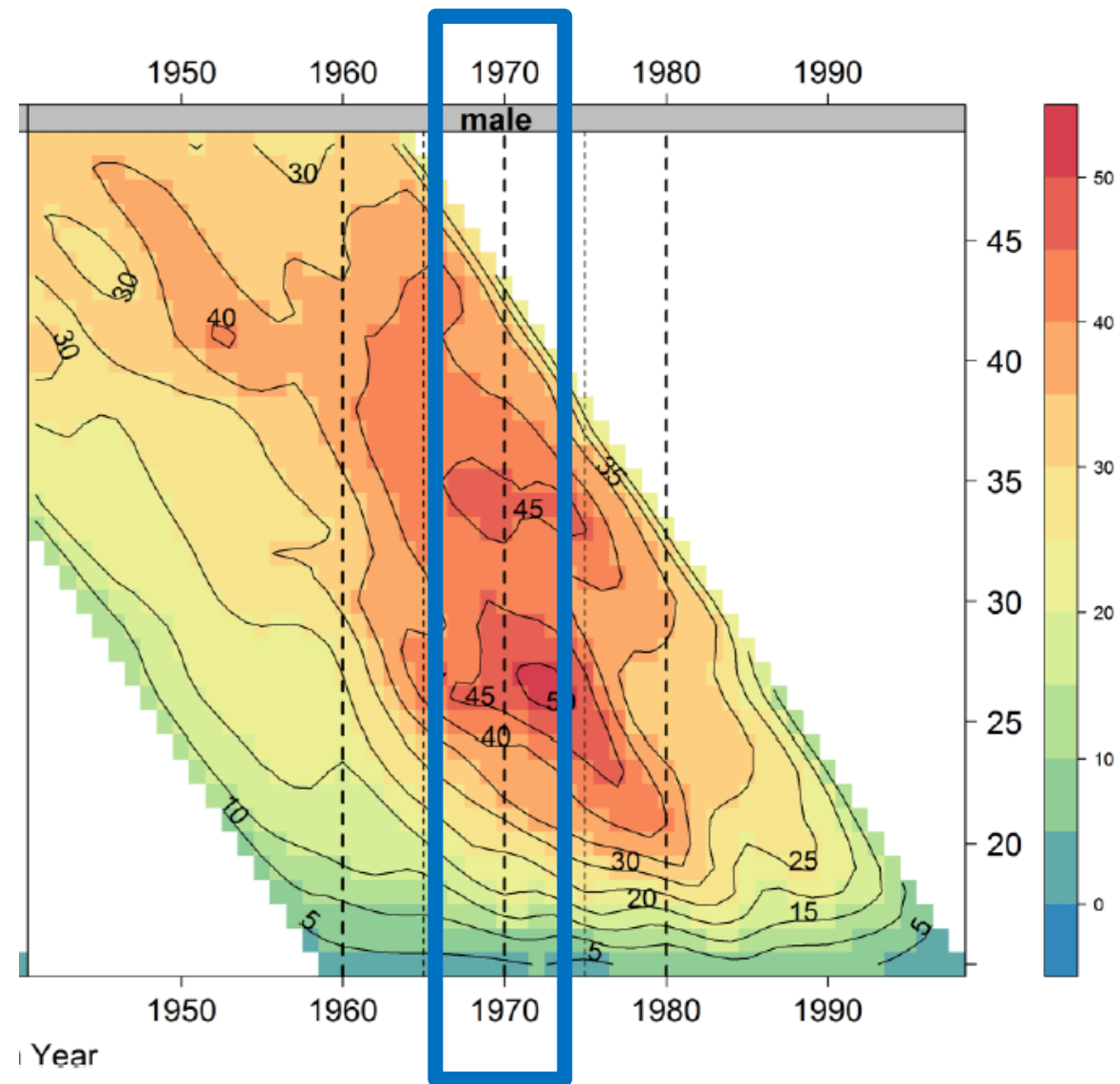
% children with probable psychological problems

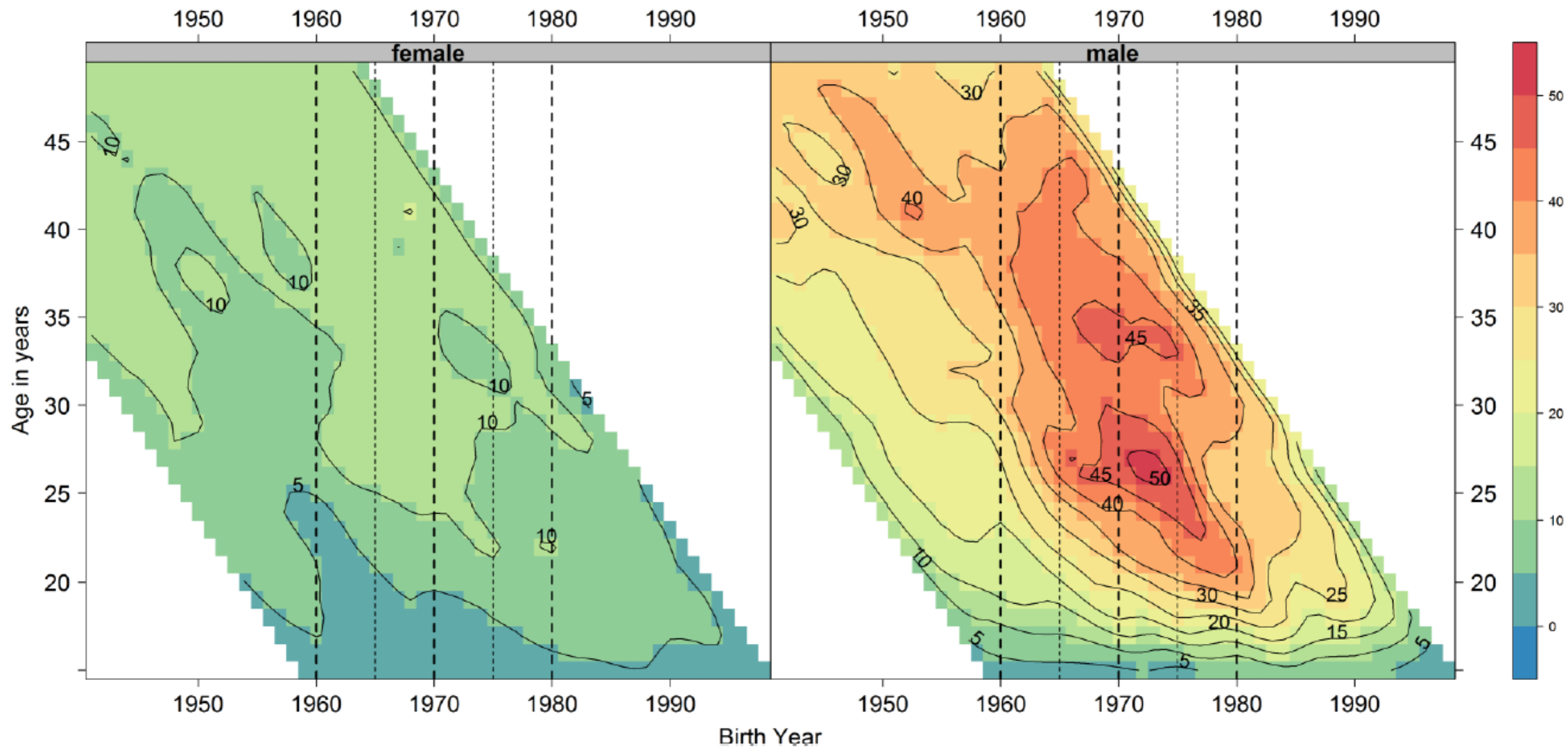


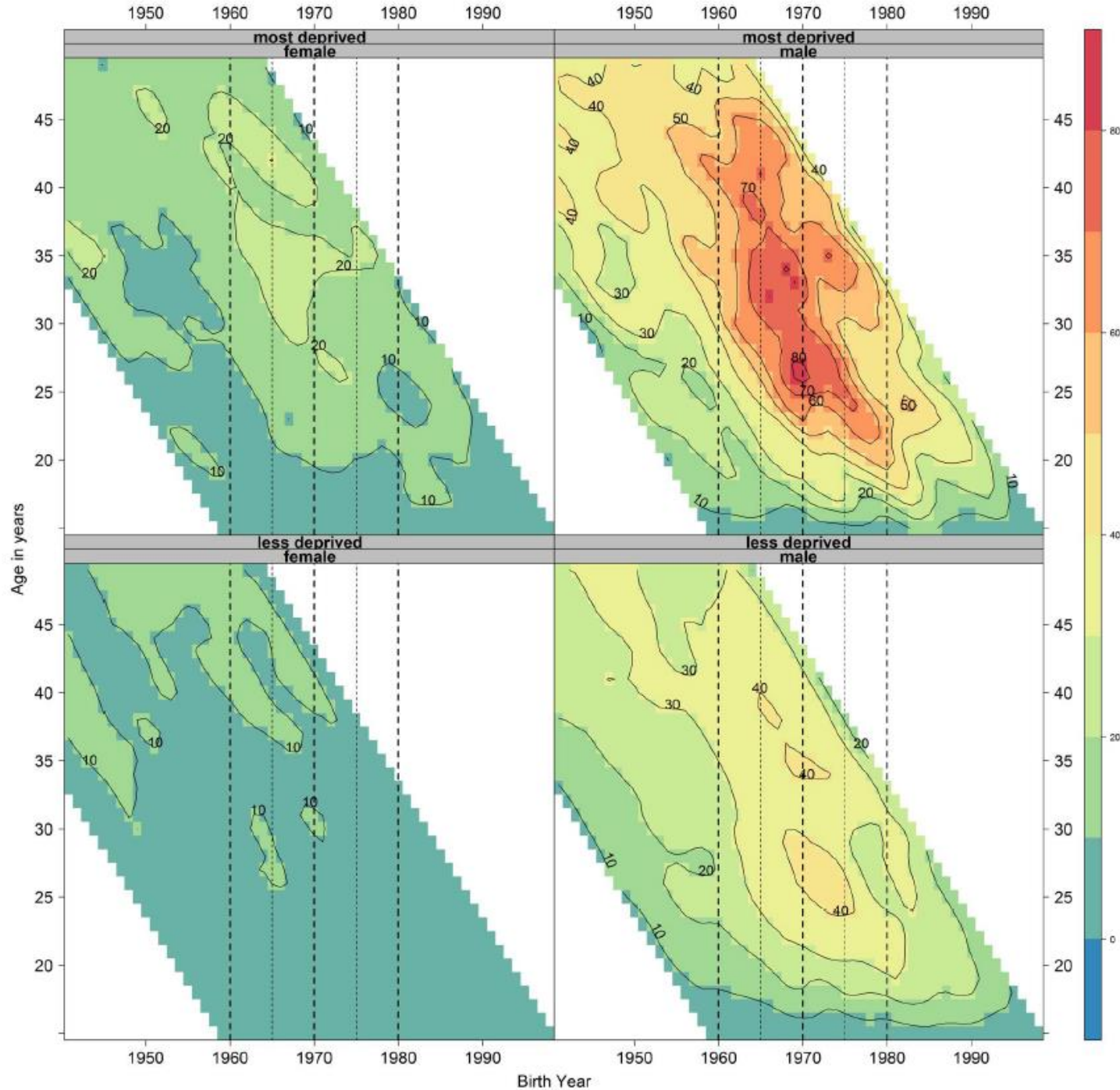
Suicide risk for men in Scotland living in deprived areas



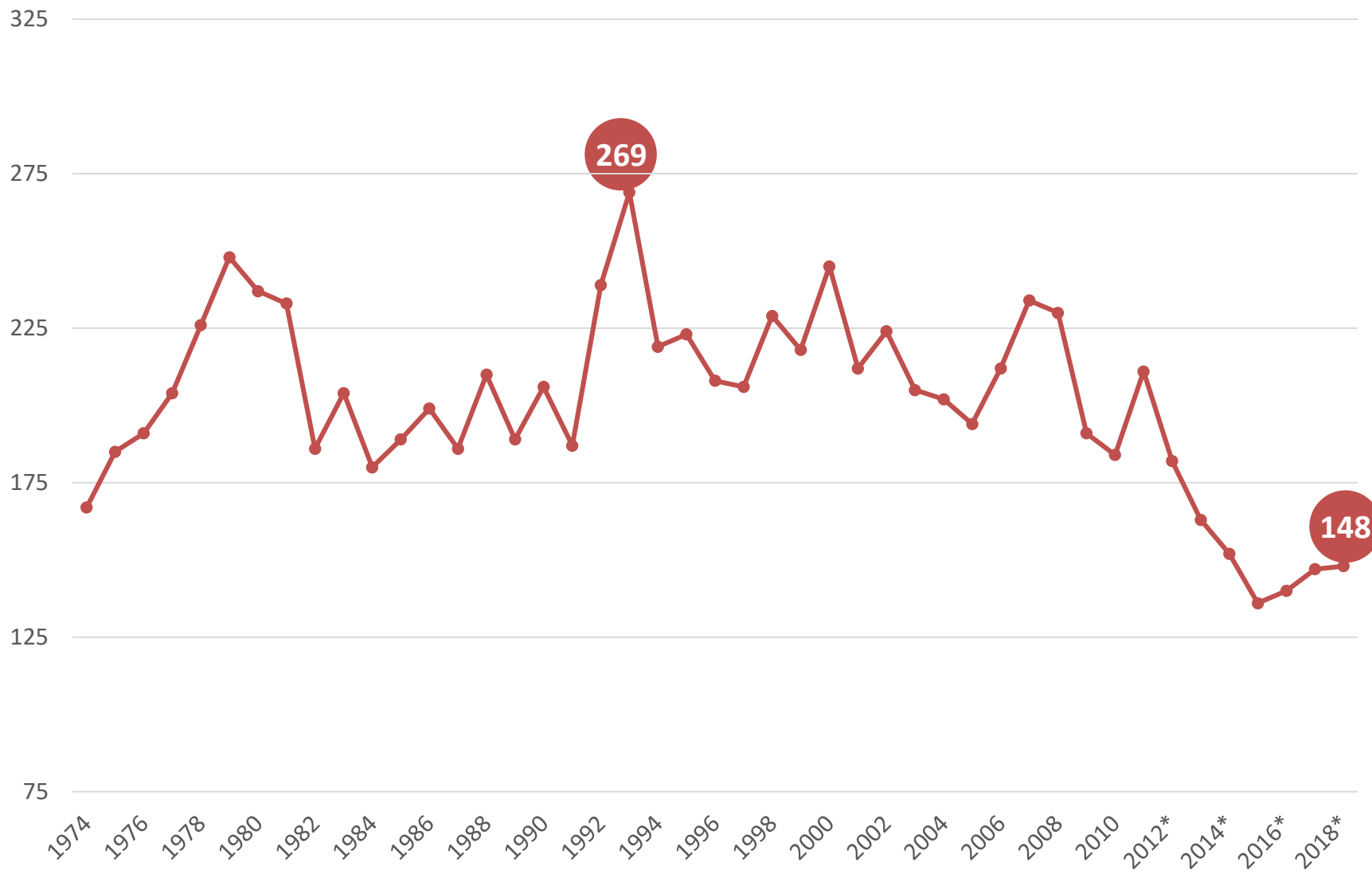
Suicide risk for men in Scotland living in deprived areas



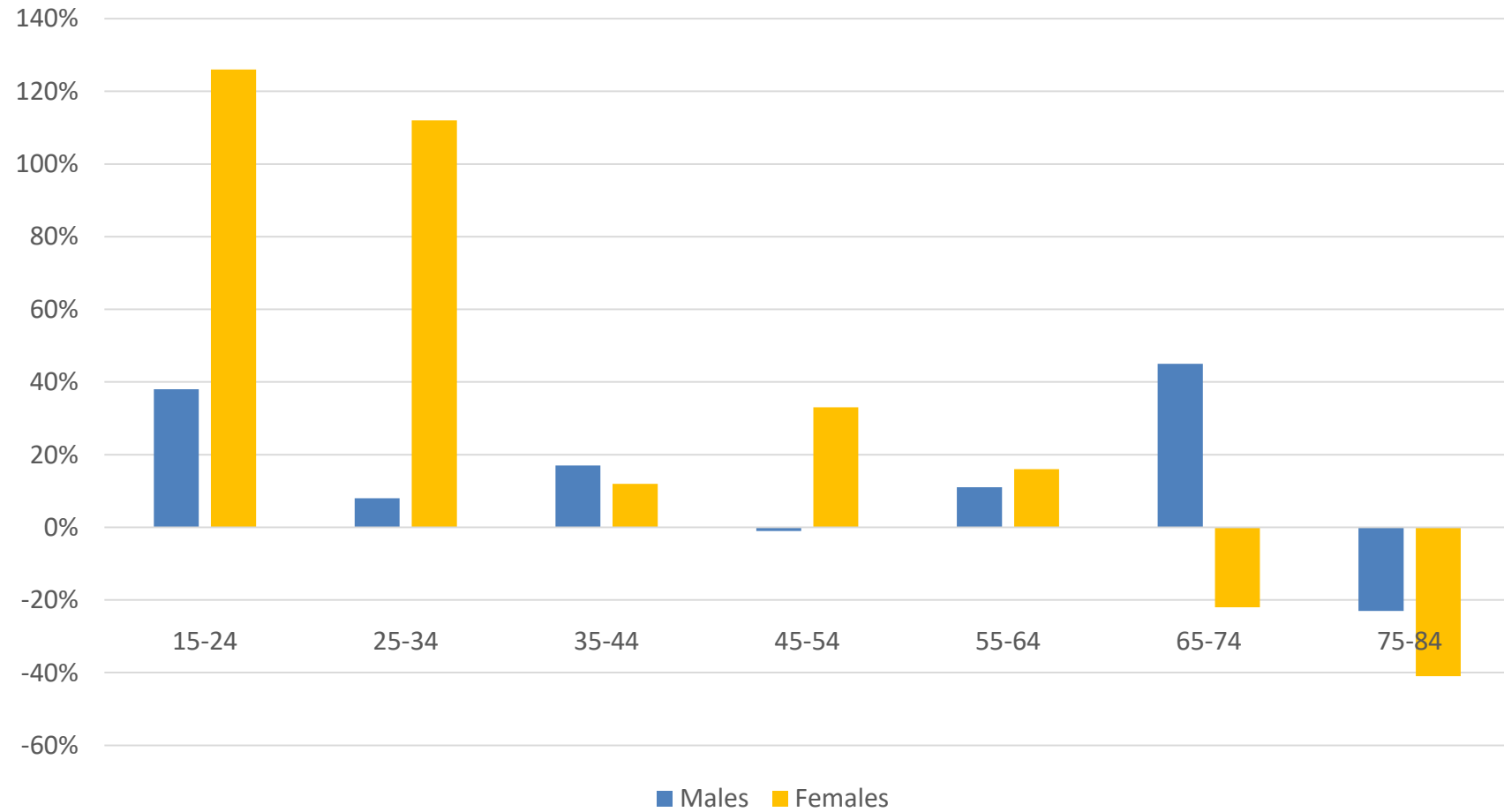




Deaths by 'intentional self-harm' or
'event of undetermined intent', NHS GG&C

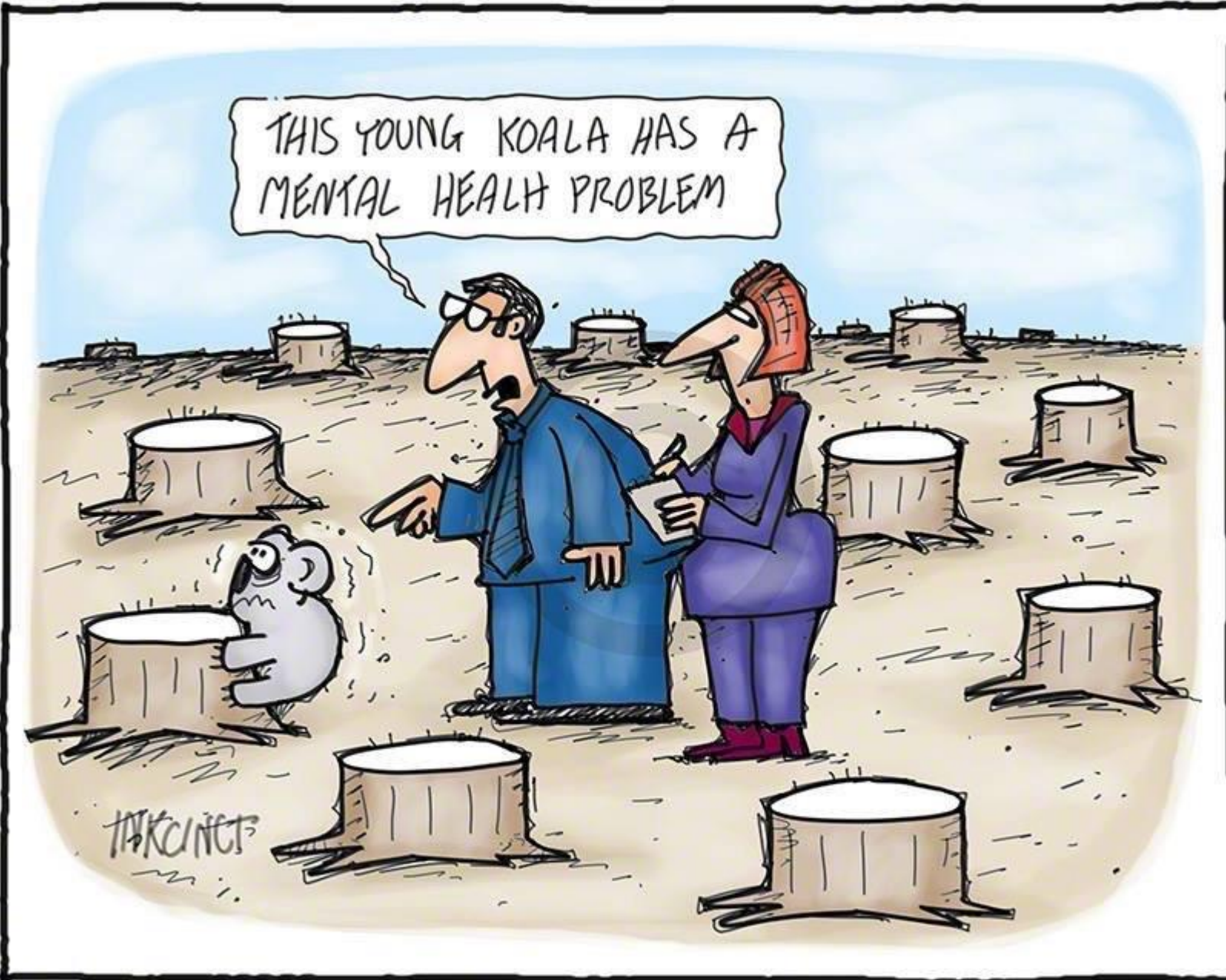


Changes in suicide by gender and age 2017-18



Causes of the causes: preventing what?

THIS YOUNG KOALA HAS A MENTAL HEALTH PROBLEM



10 most commonly measured Adverse Childhood Experiences (ACEs)

ABUSE



Physical



Verbal



Sexual

NEGLECT



Physical



Emotional

HOUSEHOLD ADVERSITIES



Mental
Illness



Incarcerated
relative



Domestic
violence



Parental
Separation






Substance
abuse



Article

Adverse Childhood Experiences and Hospital-Treated Self-Harm

Seonaid Cleare ^{1,*} , Karen Wetherall ¹, Andrea Clark ¹, Caoimhe Ryan ², Olivia J. Kirtley ³ ,
Michael Smith ⁴  and Rory C. O'Connor ¹

¹ Suicidal Behaviour Research Laboratory, Institute of Health and Wellbeing, College of Medical, Veterinary and Life Sciences, University of Glasgow, Gartnavel Royal Hospital, 1055 Great Western Road, Glasgow G12 0XH, UK; Karen.wetherall@glasgow.ac.uk (K.W.); Andrea.clark@glasgow.ac.uk (A.C.); Rory.oconnor@glasgow.ac.uk (R.C.O.C)

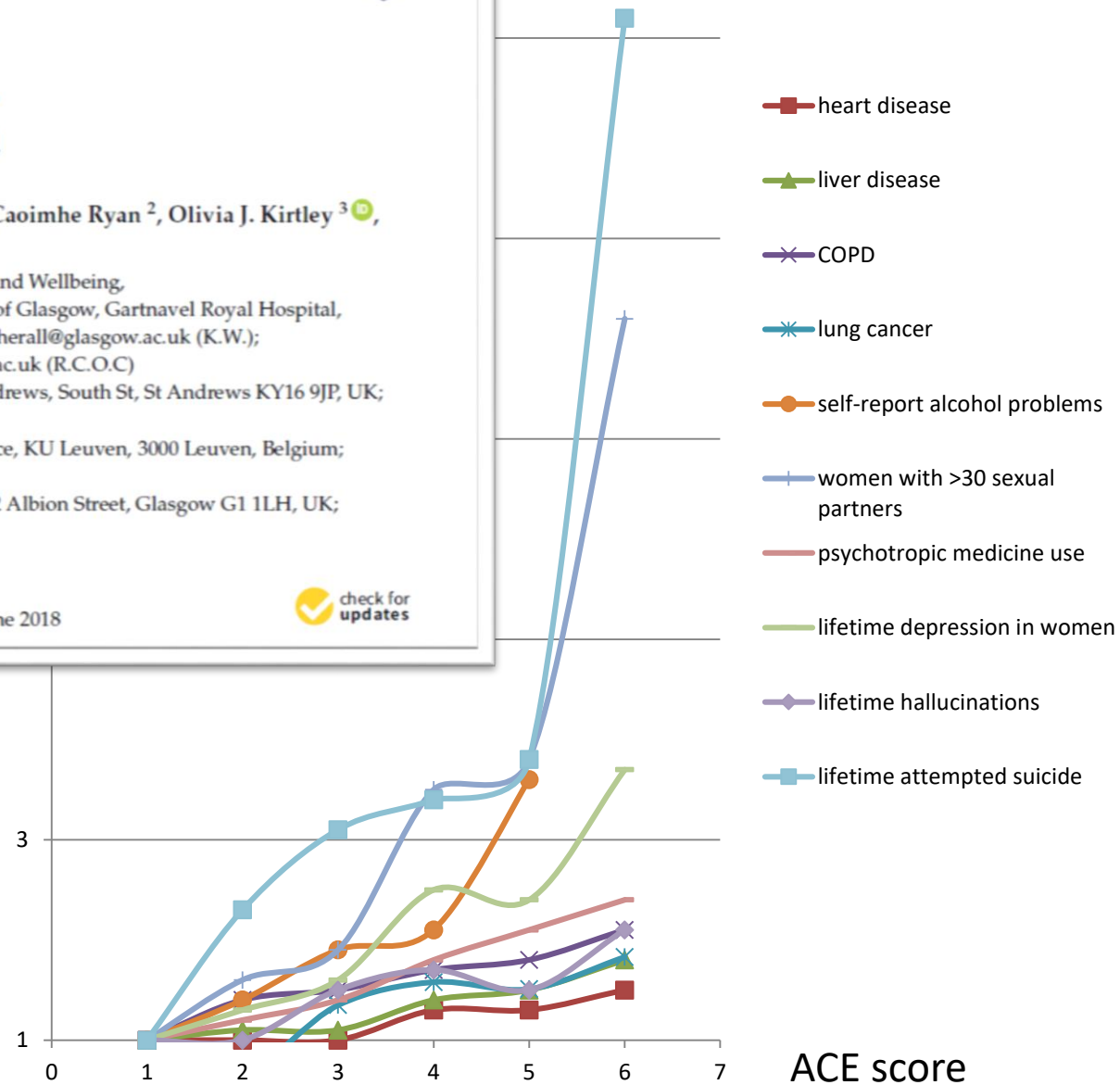
² School of Psychology and Neuroscience, University of St Andrews, South St, St Andrews KY16 9JP, UK; cr487@st-andrews.ac.uk

³ Center for Contextual Psychiatry, Department of Neuroscience, KU Leuven, 3000 Leuven, Belgium; olivia.kirtley@kuleuven.be

⁴ NHS Greater Glasgow and Clyde, Commonwealth House, 32 Albion Street, Glasgow G1 1LH, UK; Michael.Smith2@ggc.scot.nhs.uk

* Correspondence: seonaid.cleare@glasgow.ac.uk

Received: 22 April 2018; Accepted: 5 June 2018; Published: 11 June 2018



ACE score

Extended ACEs...

Rethinking the Measurement of Adversity: Moving Toward Second-Generation Research on Adverse Childhood Experiences

Joshua P. Mersky^{1,2}, Col

Abstract
Research on adverse childhood origins of disorder and disease. To further progress requires a more comprehensive sample of women who reinterrelations among 10 common parental absence, parents/bibling stress and smoking, were examined prevalence rates were high compared to conventional ACEs loaded on the solution emerged once new ACE future directions toward a second

Keywords
measurement, exploratory factors

Over the past two decades, reexperiences (ACEs) has helped to understand risks and the onset of disease. Results from the U.S. (Kessler, Davis, & Kendler, 1998; Felitti et al., 1998), and scores shown that ACEs are prevalent. A sample, they consistently show adults have suffered at least one 2013; Felitti et al., 1998; Kessler co-occur and most adults who rehistory of multiple ACEs (Felitti et al., 2010). This revelation is magnified that with an increasing number of poor health-related outcomes et al., 2010).

Despite the proliferation of remain. First, low-income groups they are likely to be at a high National Survey of Child Health the poorest children averaged more as did children in the highest income 2016). Yet the effects of ACEs on

Improving the Adverse Childhood Experiences Study Scale

David Finkelhor, PhD, Ann

Objective: To test and improve childhood experiences from experiences (ACE) Study scale broader range to correlate

Design: Nationally representative adolescents.

Setting and Participants: A nationally representative 10 to 17 years who were as and current distress symptoms

Main Outcome Measures: current distress symptoms

Results: The adversities from were associated with mental

Author Affiliations: Crimes Against Children Research Center, University of New Hampshire, Durham (Dr Finkelhor and Turner and Ms Shattuck); and Psychology Department, Sewanee, the University of the South, Sewanee, Tennessee (Dr Hamby).

Child Maltreatment
2017, Vol. 2(3) 58–68
© The Author(s) 2016
Reprints and permission:
sagepub.com/journalsPermissions.nav
DOI: 10.1177/1077559516679111
journals.sagepub.com/home/ctm
SAGE

ARTICLE

Child Abuse & Neglect xxx (2015) xxx–xxx

Contents lists available at ScienceDirect

Child Abuse & Neglect

Research article

Household and community-level Adverse Childhood Experiences and adult health outcomes in a diverse urban population^{1†}

Roy Wade Jr.^{2,3,4,*}, Peter F. Christine M. Forke^{5,6}, M. Lee M. Pachter^{7,8}, Megan

Articles

Adult mental health consequences of peer bullying and maltreatment in childhood: two cohorts in two countries

Soo-Young Lee, William E. Copeland, E. Jane Costello

Summary
Background The adult mental health consequences of peer bullying has also been shown effects are just due to being exposed to being

Methods We used data from the Avon Longitudinal Study of Parents and Children (ALSPAC) cohort, a nationally representative birth cohort who were only maltreated were at increased family hardships according to the GSMS cohort, those who were only being maltreated children who were not maltreated or bullied risk for overall mental health problems, a the ALSPAC cohort compared with youth children who were maltreated only to have p=0.005; GSMS 3.8, 1.6–7.9, p=0.0001 (ALSPAC 1.7, 1.1–2.7), and self-harm (A

ARTICLE INFO

Article history:
received 17 July 2015
received in revised form 31 October 2015
accepted 20 November 2015
available online xxx

Keywords:
Childhood adversity
socioeconomic status
health outcomes
bullying
loss

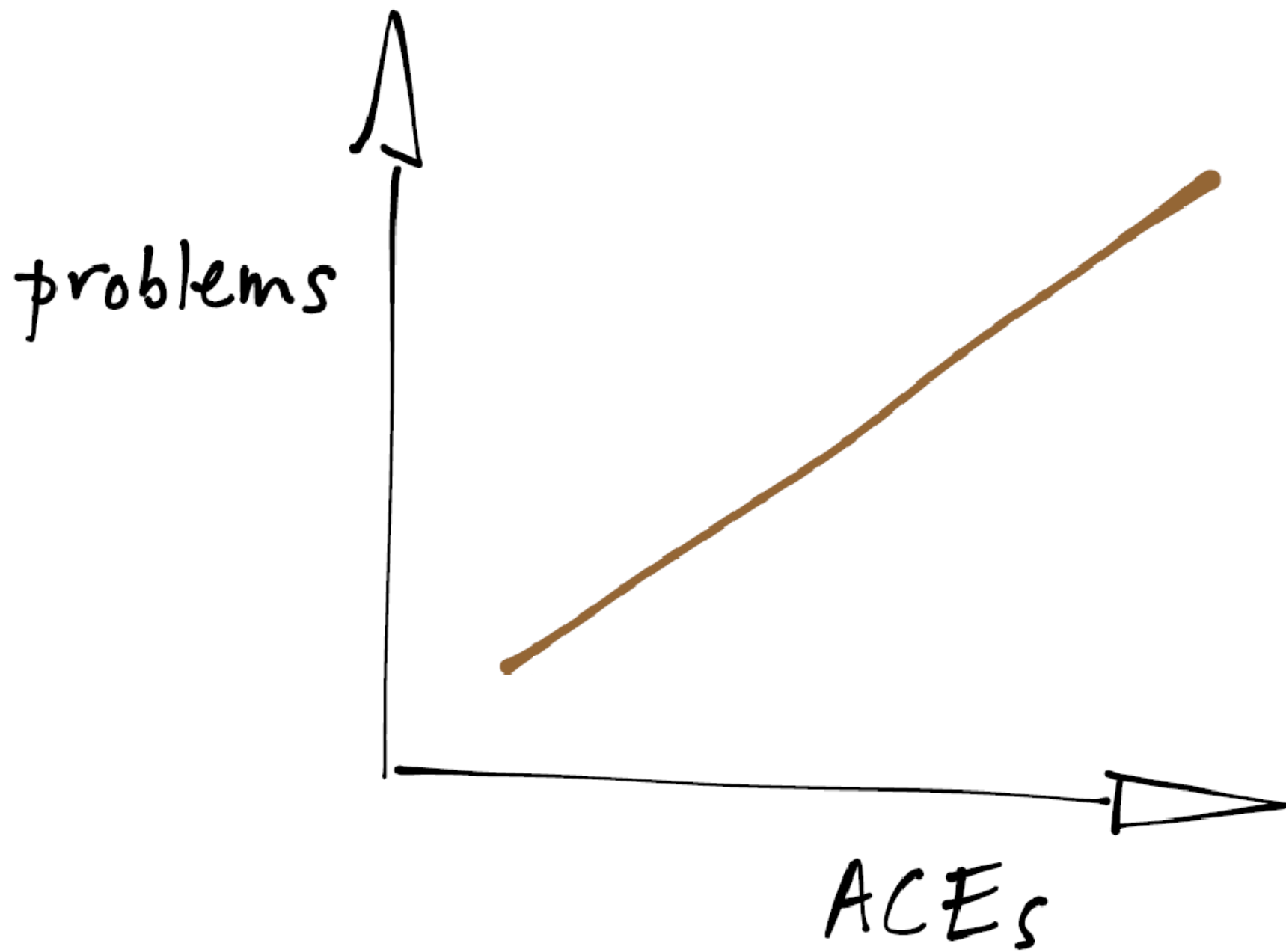
Abstract: The study explored the prevalence and nature of bereavement among 33 young men who had been sentenced to a young offender institution. A bereavement had been experienced by 91% of the sample, and the rates of traumatic and multiple deaths were high. Young men who had experienced more 'difficult' bereavements scored higher on the mental health screen than those who had not, with the exception of the loss of a parent/main carer. Differences did not reach statistical significance. Semi-structured interviews were also undertaken with a subsample in order to describe young men's bereavement experiences from their own perspective.

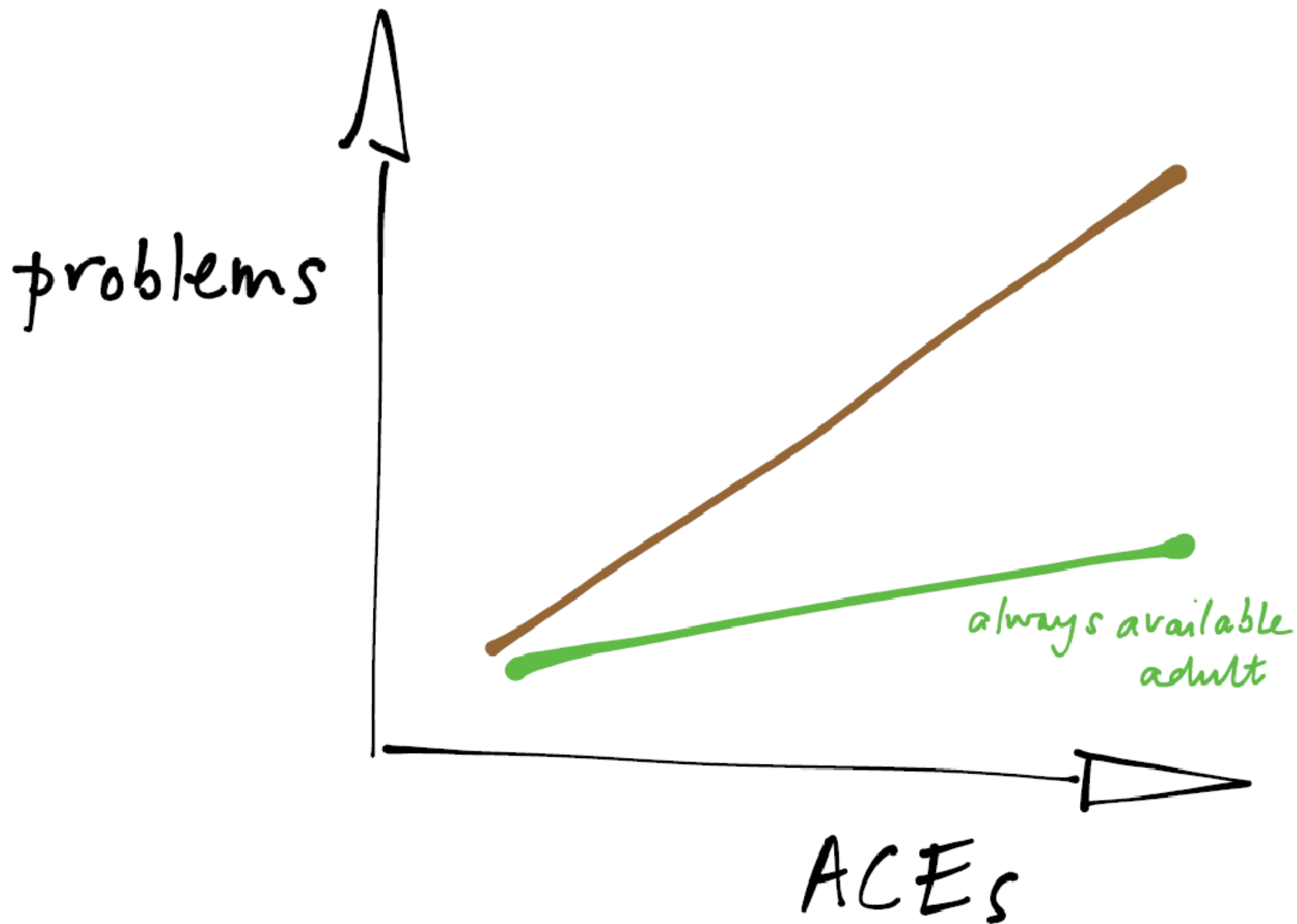
Keywords: bereavement; loss; youth justice; young offenders

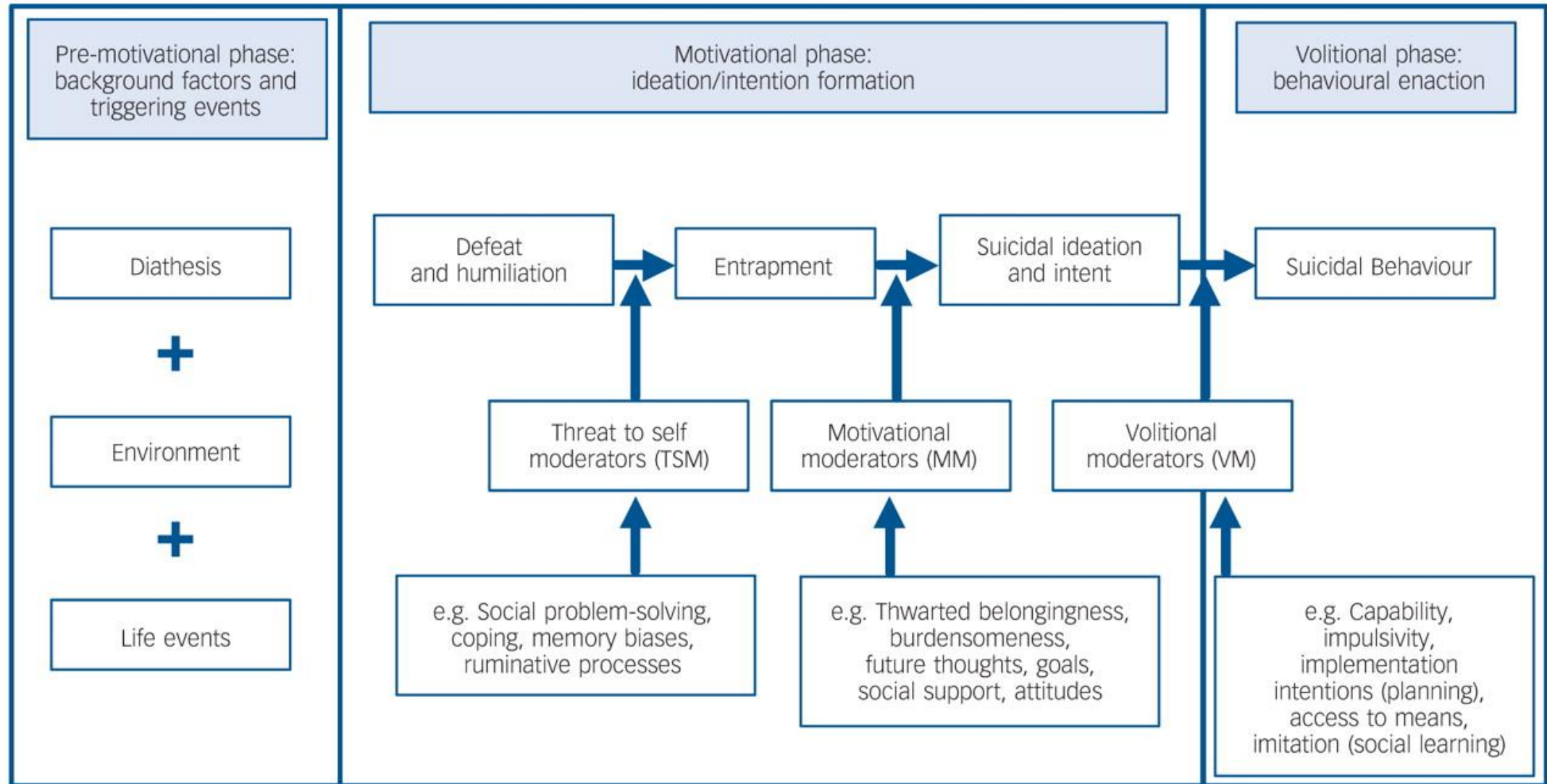
Funding: Wellcome Trust, Medical Research Council, the National Institute of Health.

Copyright: © Lee et al. Open Access

- Bullying
- Racism
- Bereavement
- Witnessing violence
- Neighbourhood safety
- Frequent money problems
- Food insecurity
- Homelessness
- Prolonged parental absence
- No good friends



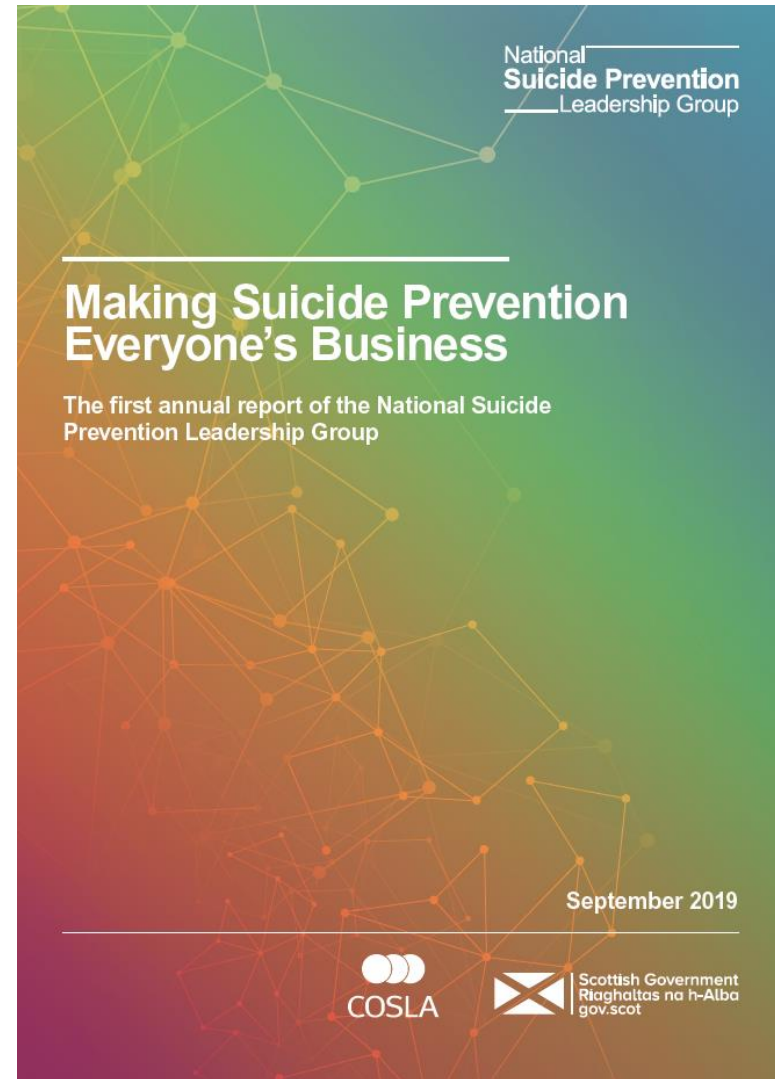




O'Connor, 2012, 2018:

“Integrated Motivational-Volitional” model of suicidal behaviour

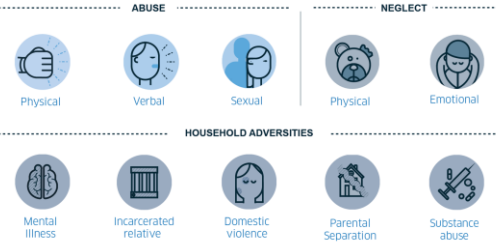
defeat
humiliation
entrapment



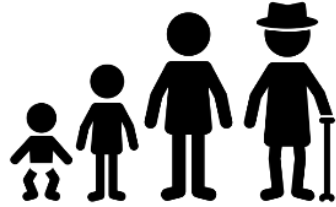
causes of the causes

- original ACEs (household)
- extended ACEs (community)
- resilience AAA (always available adult)
- IMV risks for suicide

Capabilities



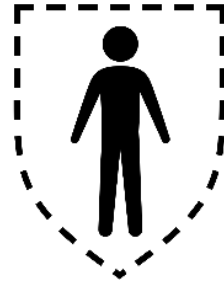
Capabilities



life



health



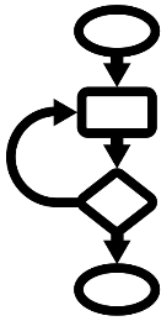
bodily
integrity



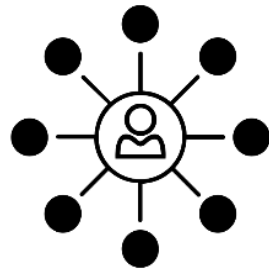
senses,
imagination
and thought



emotions



practical
reason



affiliation



nature &
other species



play



control

Capabilities

“... to be secure against violent assault, including sexual assault and domestic violence”



practical
reason



affiliation



bodily
integrity



senses,
imagination
and thought



emotions



nature &
other species



play



control

Capabilities

*“To be able to love,
to grieve, to
experience longing,
gratitude, and
justified anger”*



emotions



control

practical
reason

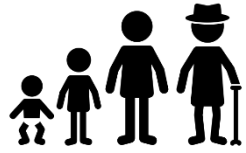
affiliation

nature &
other species

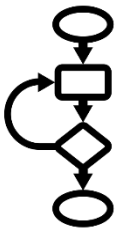
play

Capabilities

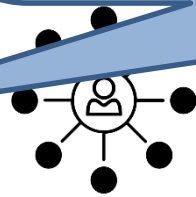
“... to imagine, think, and reason in a truly human way, including literacy, numeracy, science & creative arts”



life



practical
reason



affiliation



nature &
other species

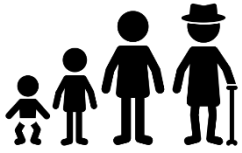


play



control

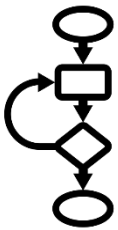
Capabilities



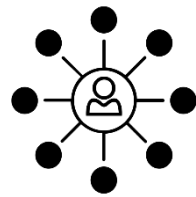
life



health



practical
reason



affiliation

ot

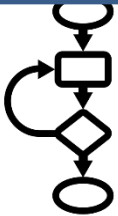
“... being able to live with and toward others... to engage in various forms of social interaction; to be able to imagine the situation of another”

Capabilities

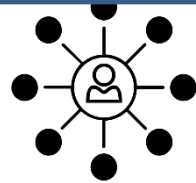
“The right to political expression, participation and choices”



emotions



practical
reason



affiliation



nature &
other species

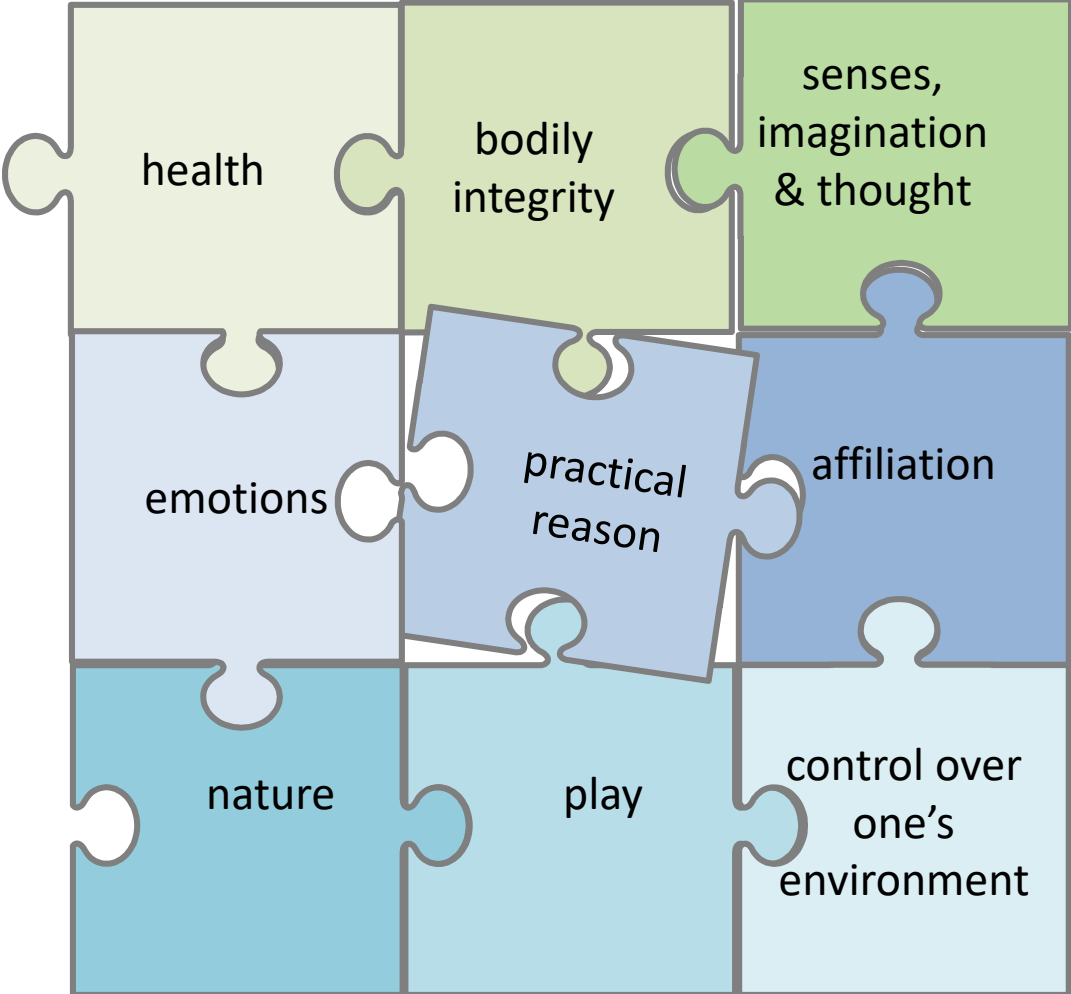


play

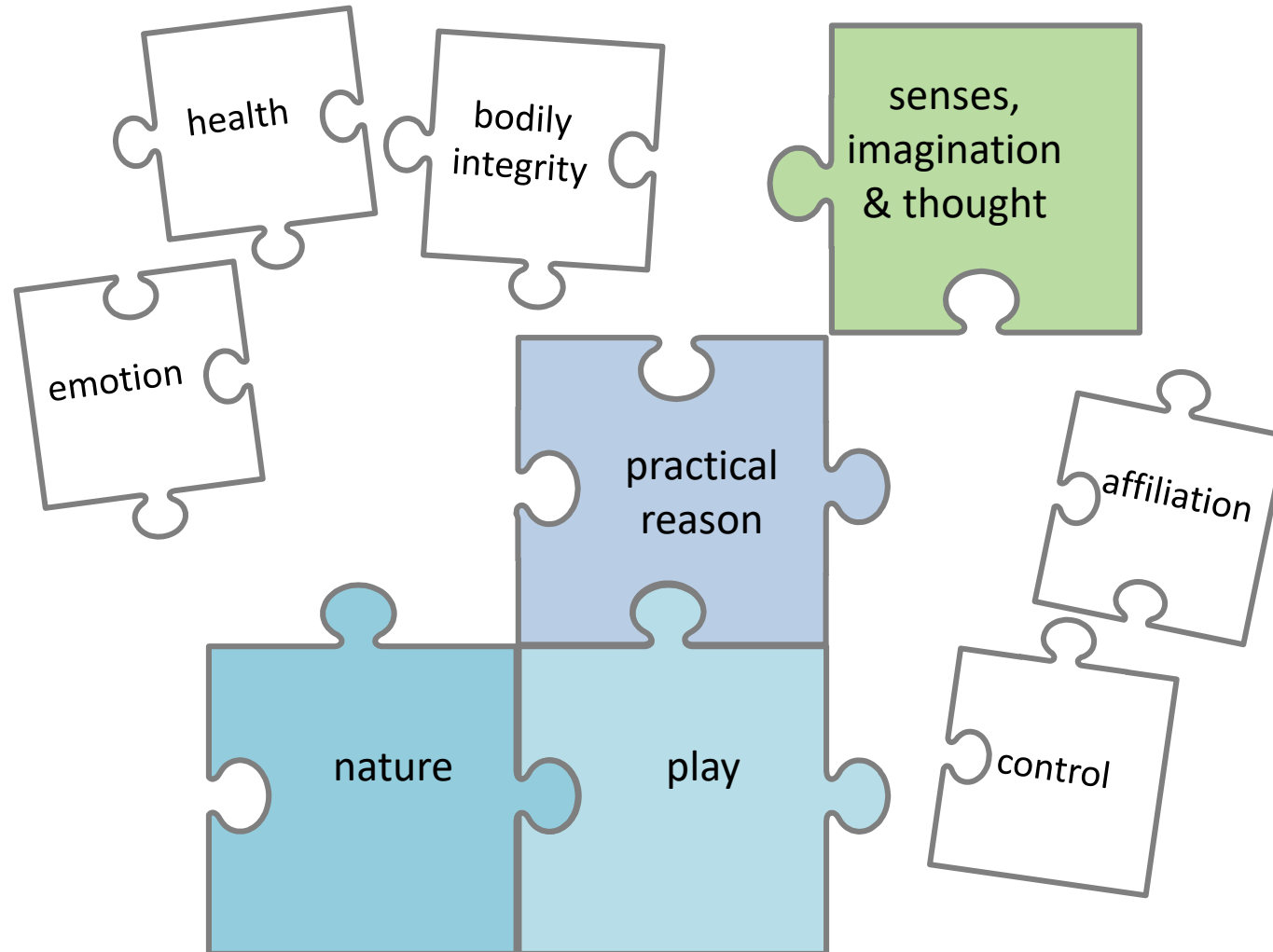


control

capabilities



ACEs impair capabilities



Capabilities



life



health



bodily
integrity



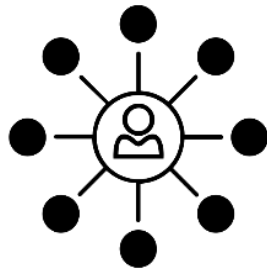
senses,
imagination
and thought



emotions



practical
reason



affiliation



nature &
other species



play

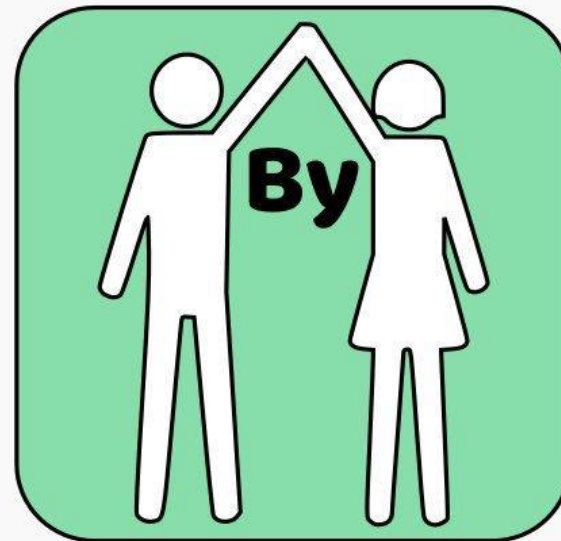


control



Friends

Contains: Social Contacts



- Violence Reduction Unit
- Nurture Groups in Glasgow schools
- Navigators in EDs
- Peer-led recovery hubs
- GAMH Young Carers project
- Camerados
- Childrens' neighbourhoods
- Thriving Places

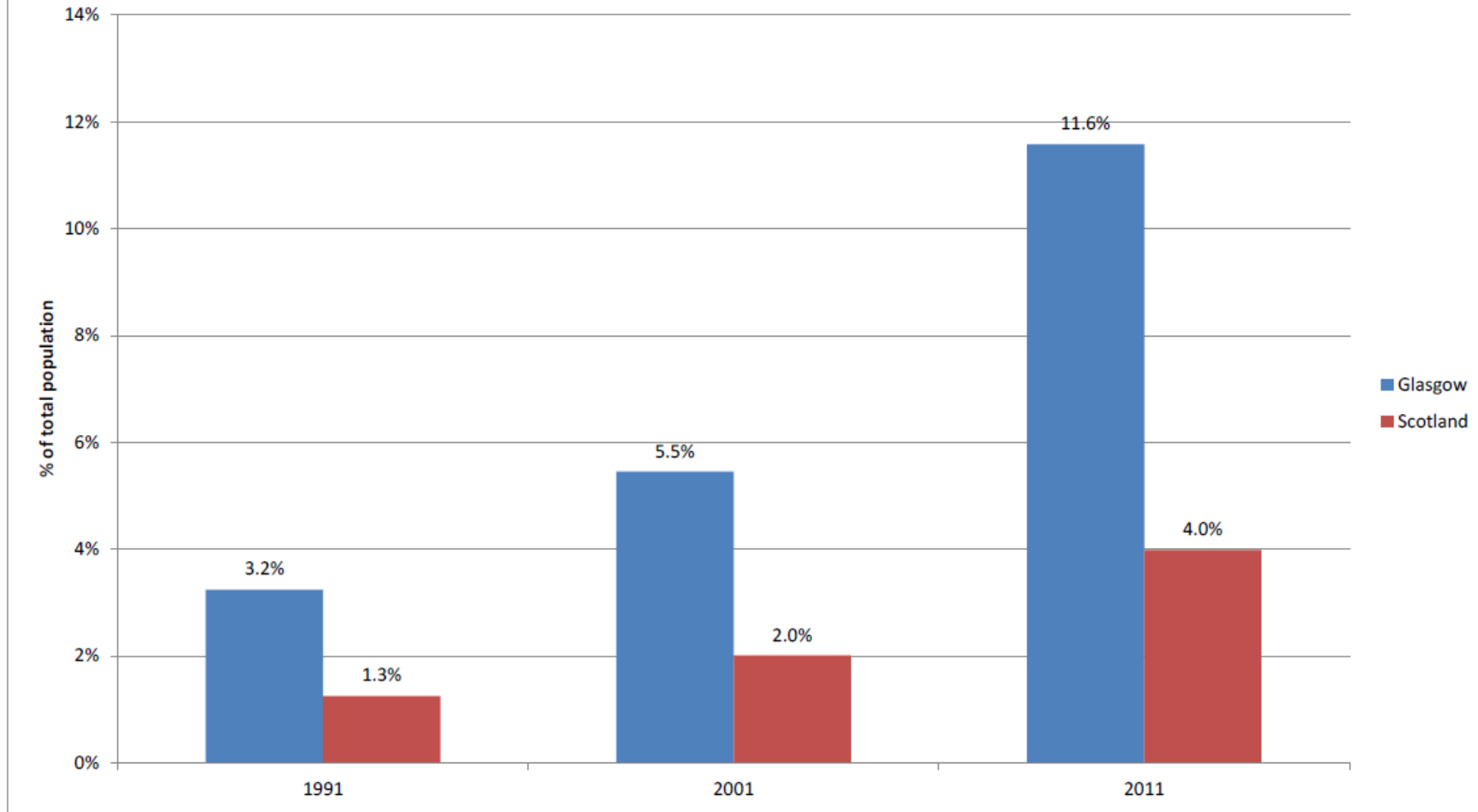




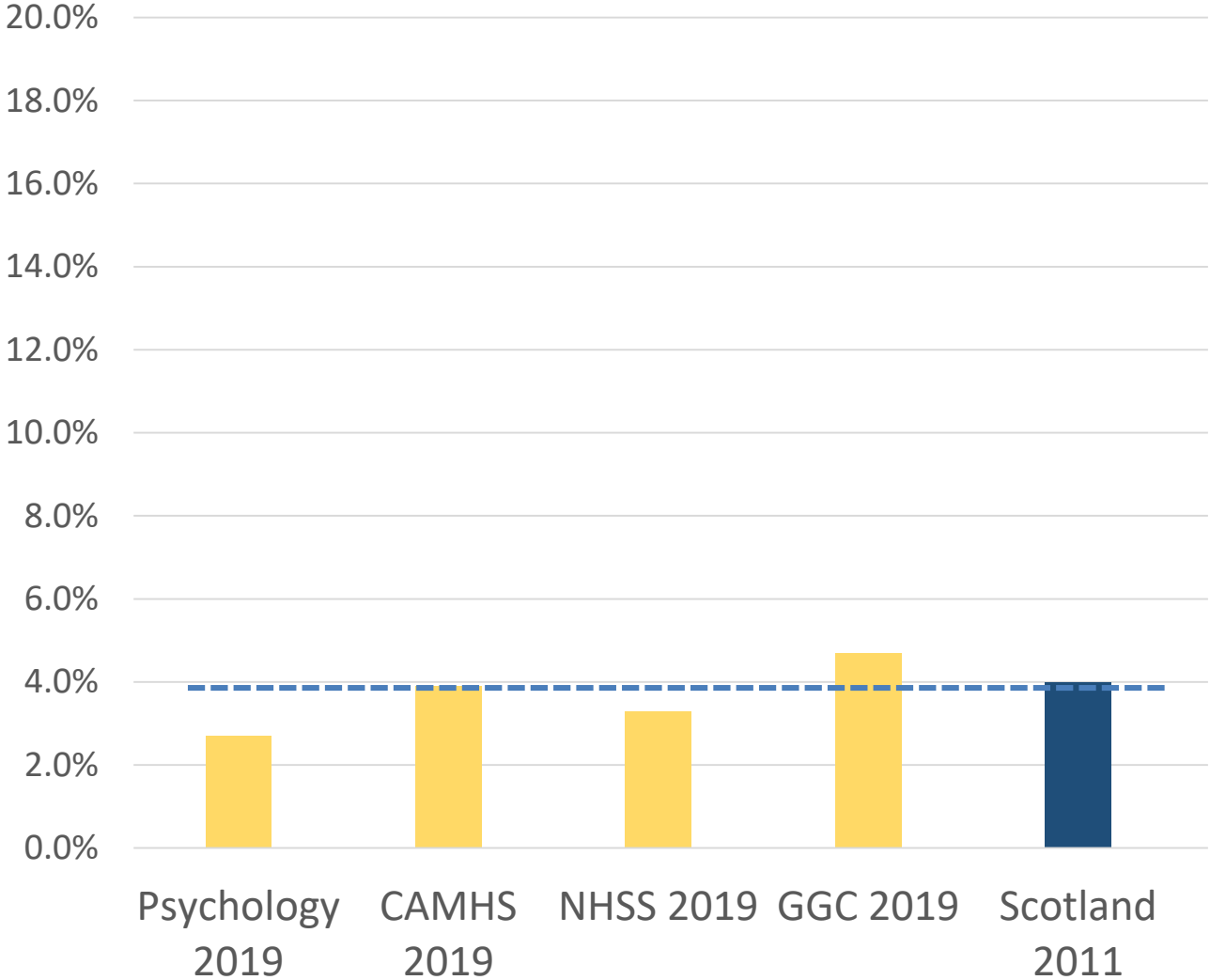


% of total population classed as non-White ethnic minority 1991-2011, Glasgow & Scotland

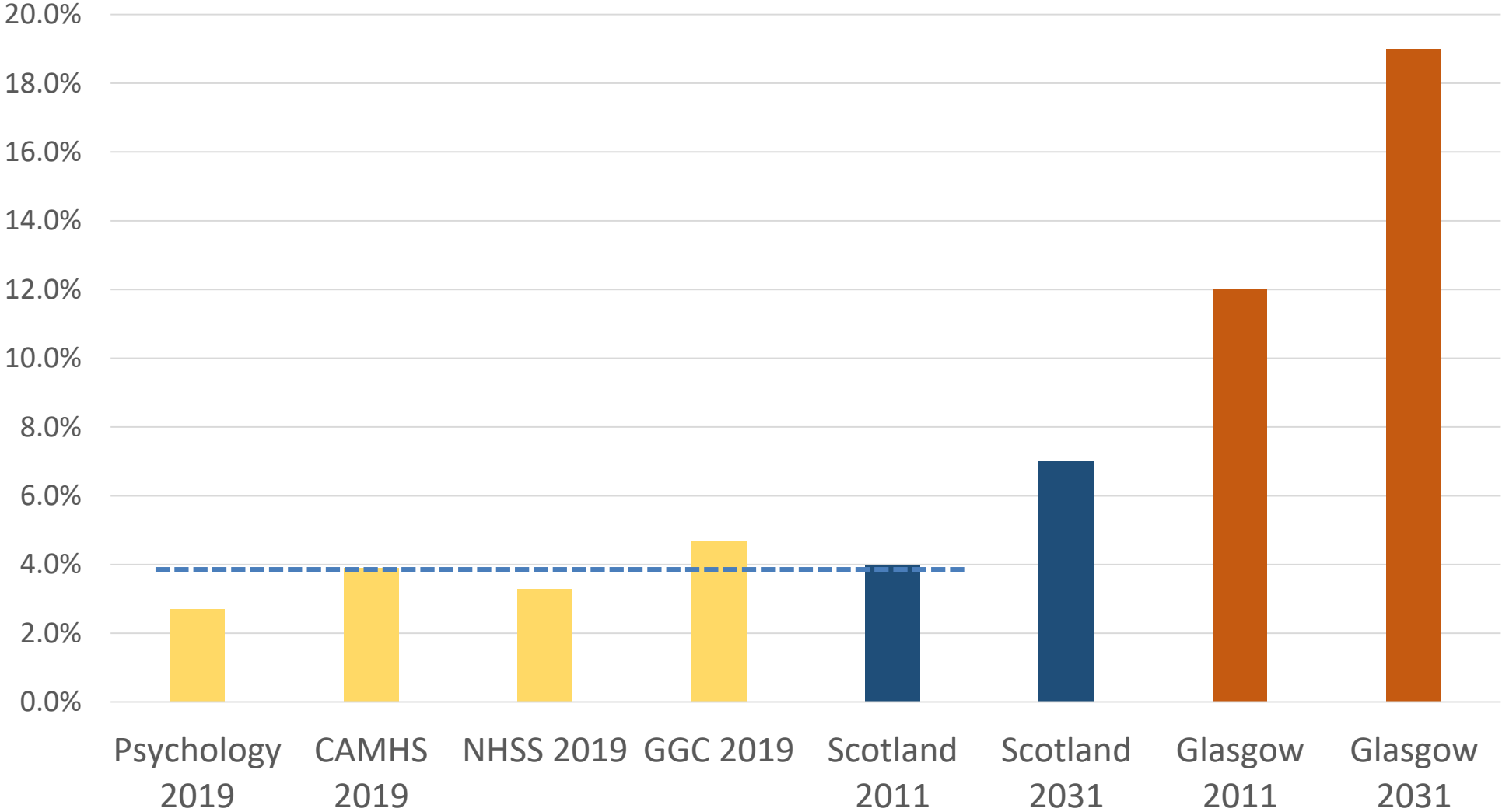
Source: Census data



% BAME by staff group and general population



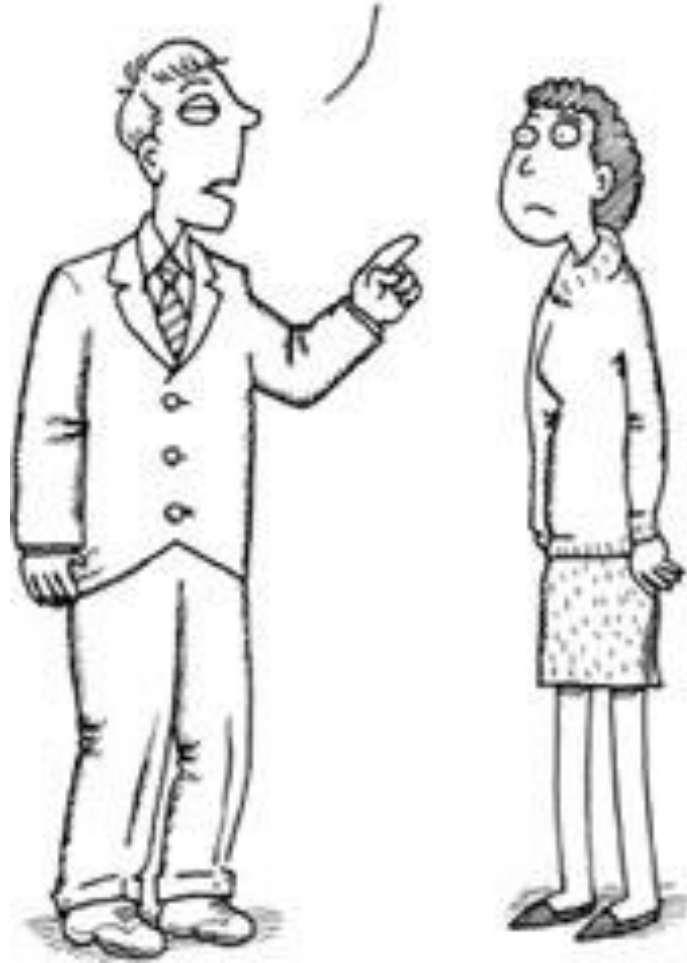
% BAME by staff group and general population



**WHEN IT COMES TO BUILDING COMMUNITY:
FOCUS FIRST ON WHAT'S STRONG
NOT WHAT'S WRONG.**



If you're good and do exactly as I say, I shall empower you.



Are we ready to change?