

ANNEX Scotland ESF Operational Programme – Tables and Graphs

This document should be read in conjunction with the main Scotland ESF Operational Programme (OP). As SFC does not allow the upload of data, this document reproduces Section 1, Section 7 and Section 8 graphics and tables referred to in the OP document.

Section 1.1: Strategy for the Operational Programmes' contribution to the Union strategy for smart, sustainable and inclusive growth and to the achievement of economic, social and territorial cohesion

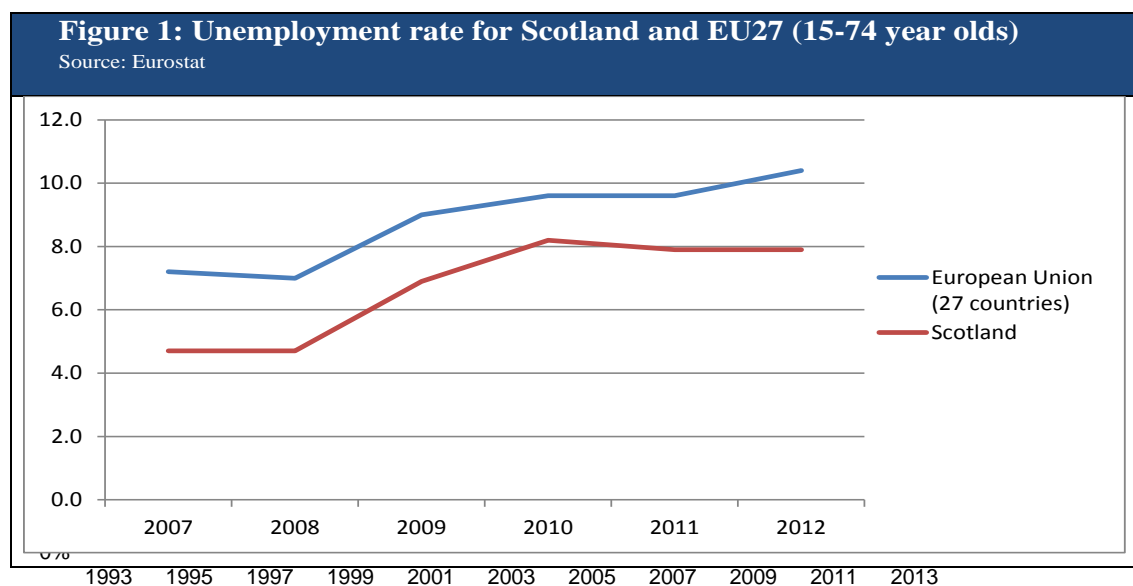


Figure 2: Youth unemployment rate (ages 16-24)

Source: Annual Population Survey (2012)

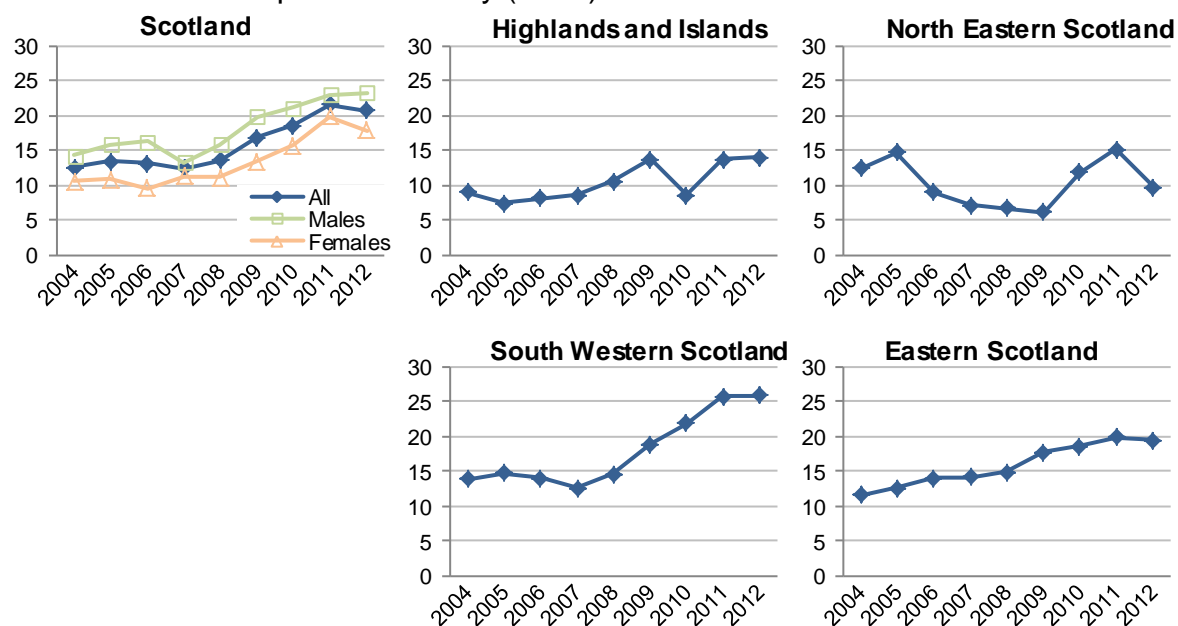


Figure 3: Number of people unemployed for 12 months or more, Scotland

Source: Annual Population Survey (ONS)

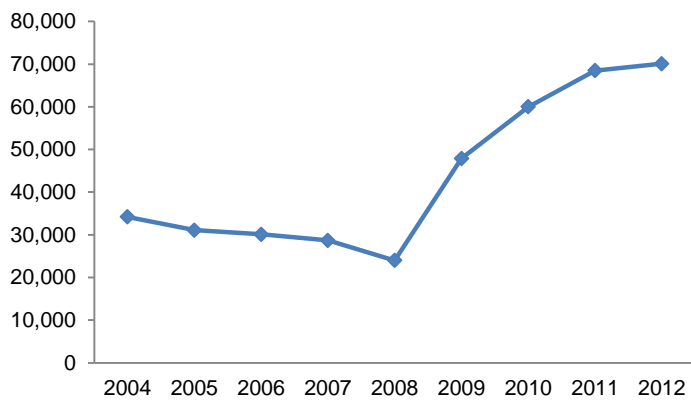


Figure 4: Proportion of working-age people who are disabled; economic activity and employment rates, year ending September 2012

Source: Annual Population Survey (ONS)

	Scotland	UK
% of people aged 16-64 who are disabled	22.7	20.8
Economic activity rate - people aged 16-64 with a disability	51.9	55.7
Economic activity rate - all people aged 16-64	76.9	77.0
Employment rate - people aged 16-64 with a disability	45.2	49.0
Employment rate - all people aged 16-64	70.7	70.8

Figure 5: Occupational split: % of all in employment, Scotland, 2012

Source: Annual Population Survey (ONS)

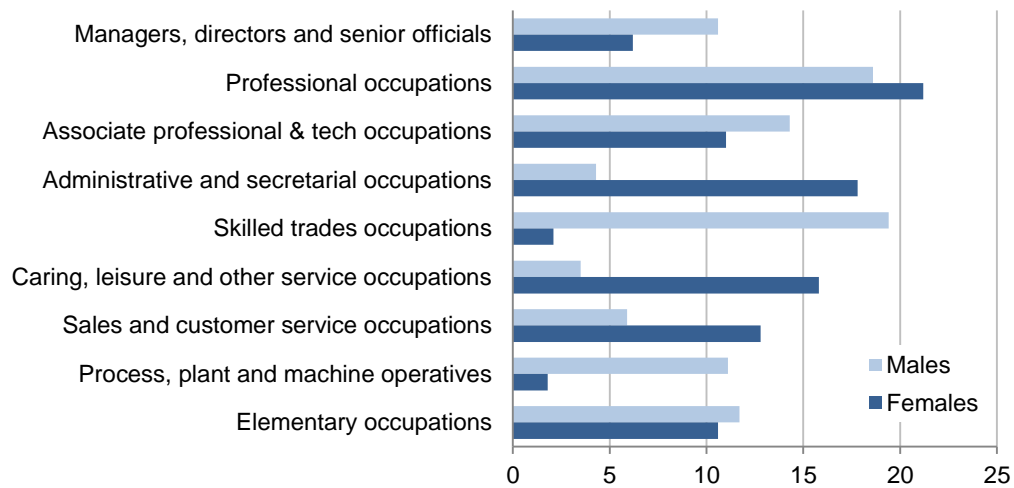
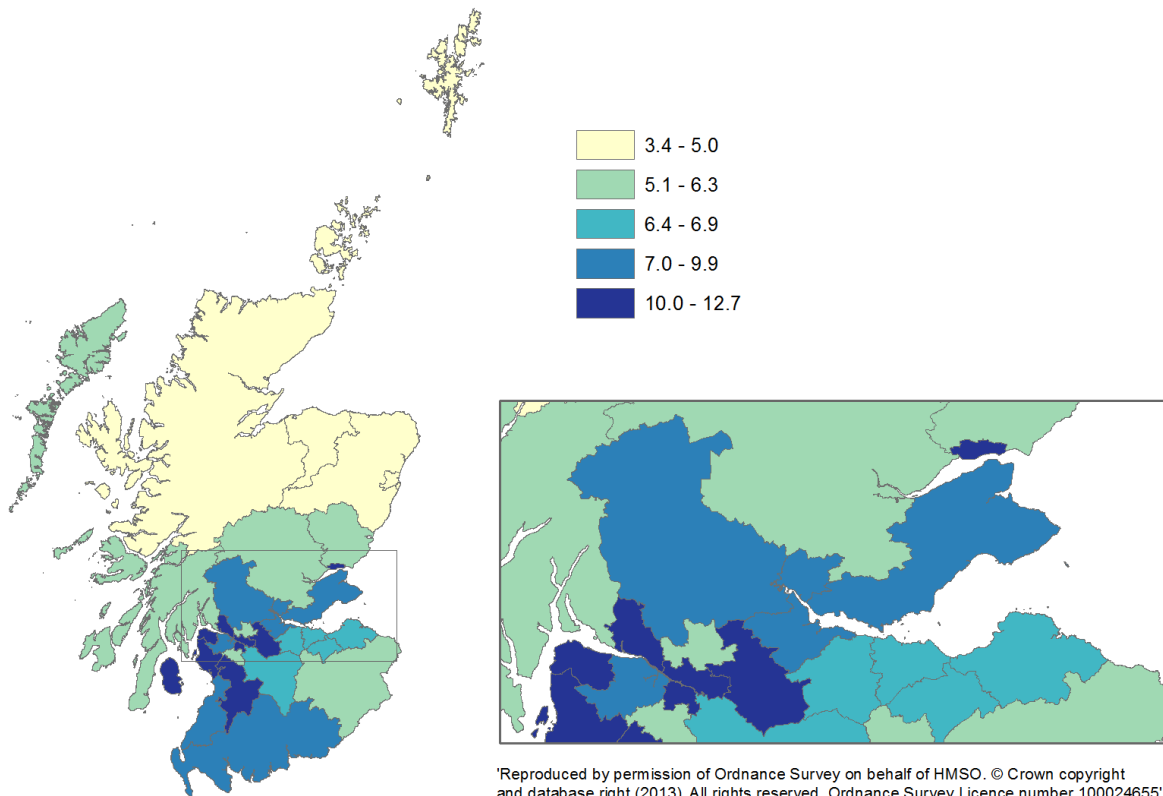


Figure 6: Unemployment rates (% , model-based), 2012

Source: Annual Population Survey (ONS)



'Reproduced by permission of Ordnance Survey on behalf of HMSO. © Crown copyright and database right (2013). All rights reserved. Ordnance Survey Licence number 100024655'

Figure 7: Number of employed 16-24 year olds in South West Scotland who are not in education, training or employment (NEET)

Source: Annual Population Survey (ONS)

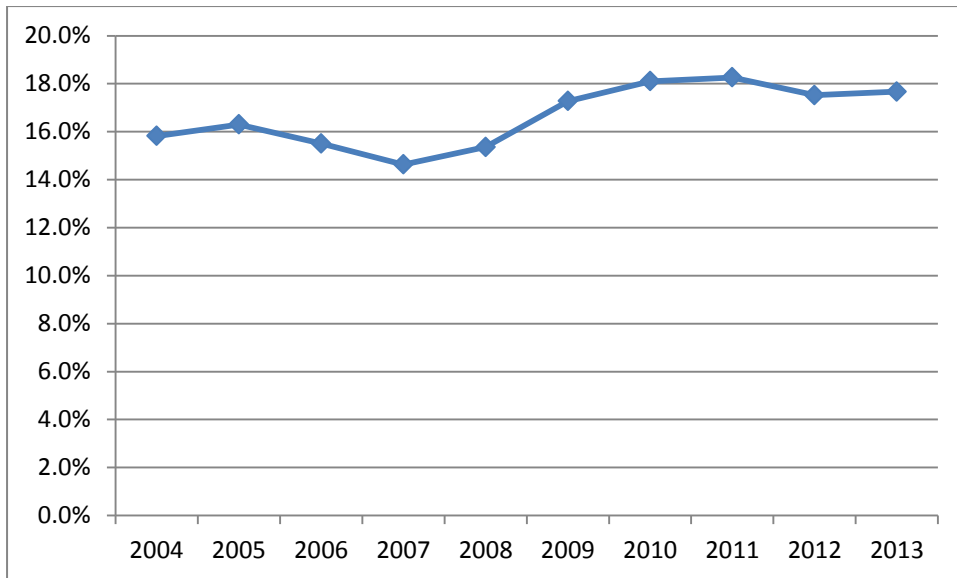


Figure 8: 16 – 19 year olds not in Employment, Education or Training (NEET) Scotland

Source: Annual Population Survey (January to December)

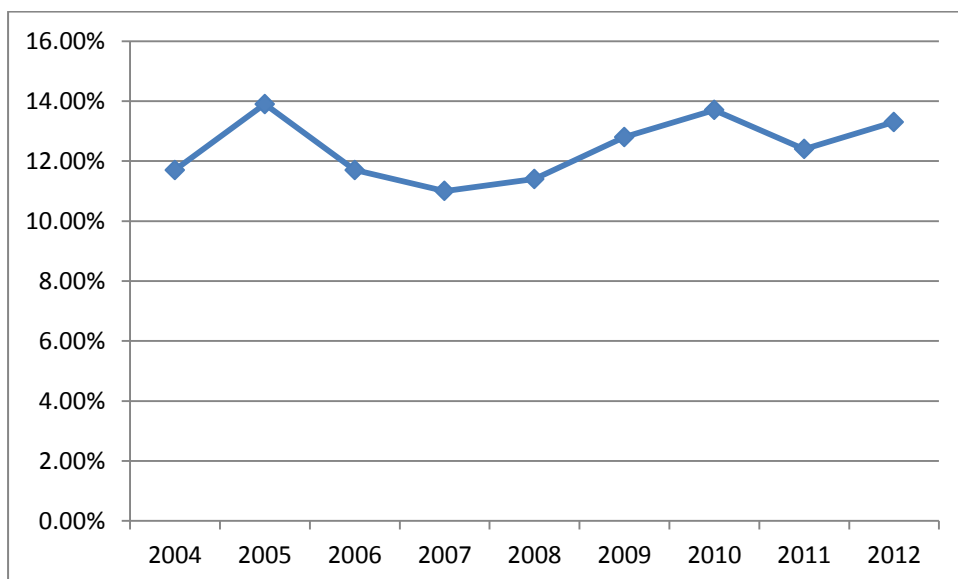


Figure 9: Proportion of individuals in in-work poverty (relative poverty before housing costs): 1998/99-2011/12

Source: HBAI dataset, DWP. Presented in Scottish Government, 2013, Poverty and income inequality in Scotland: 2011-12

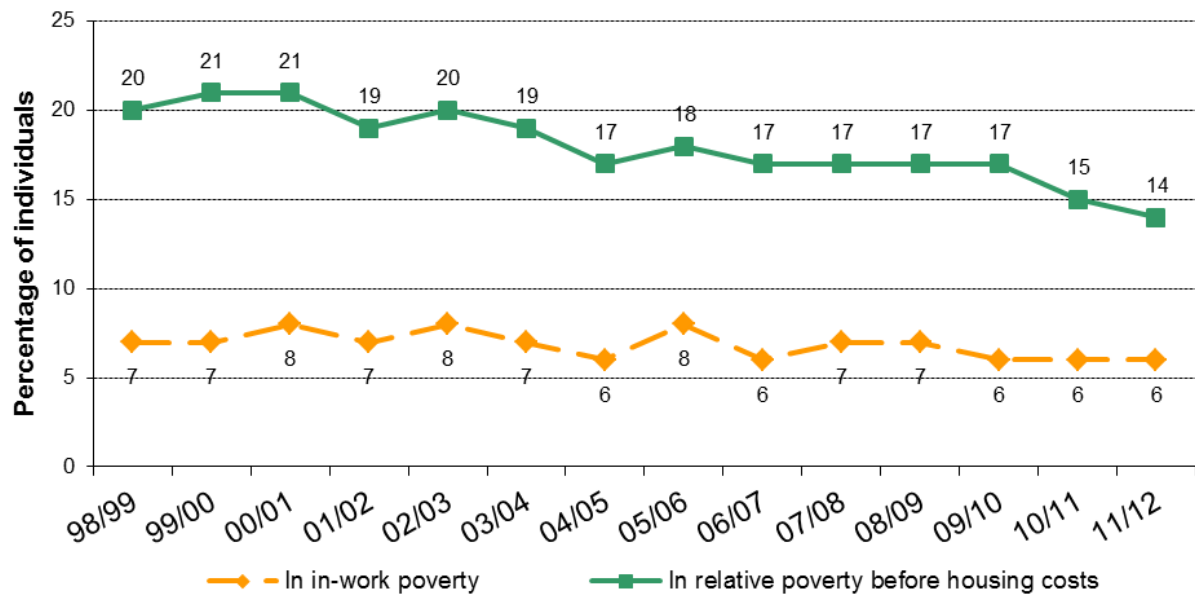


Figure 11: Proportion of data zones in local authority area that are in Scotland's 15% most deprived data zones

Source: Scottish Index of Multiple Deprivation 2012

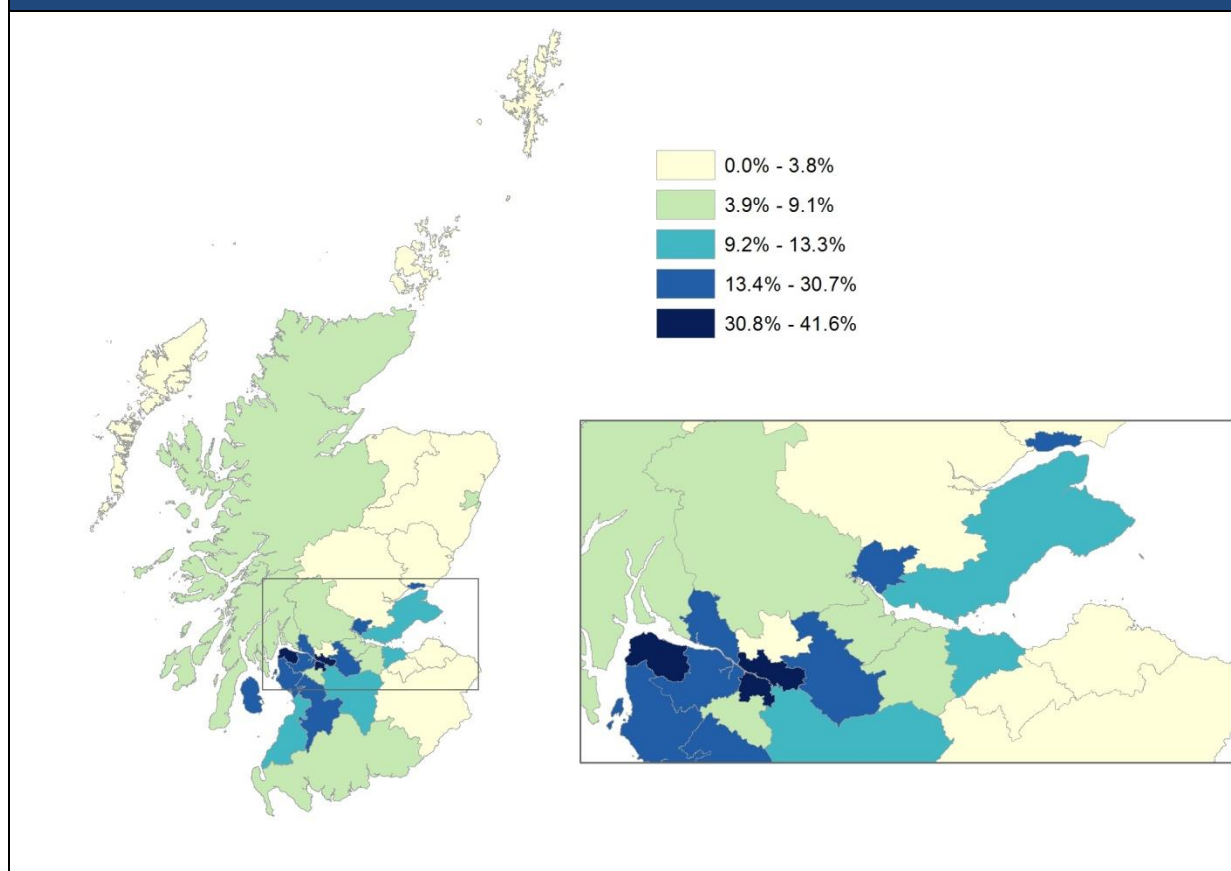


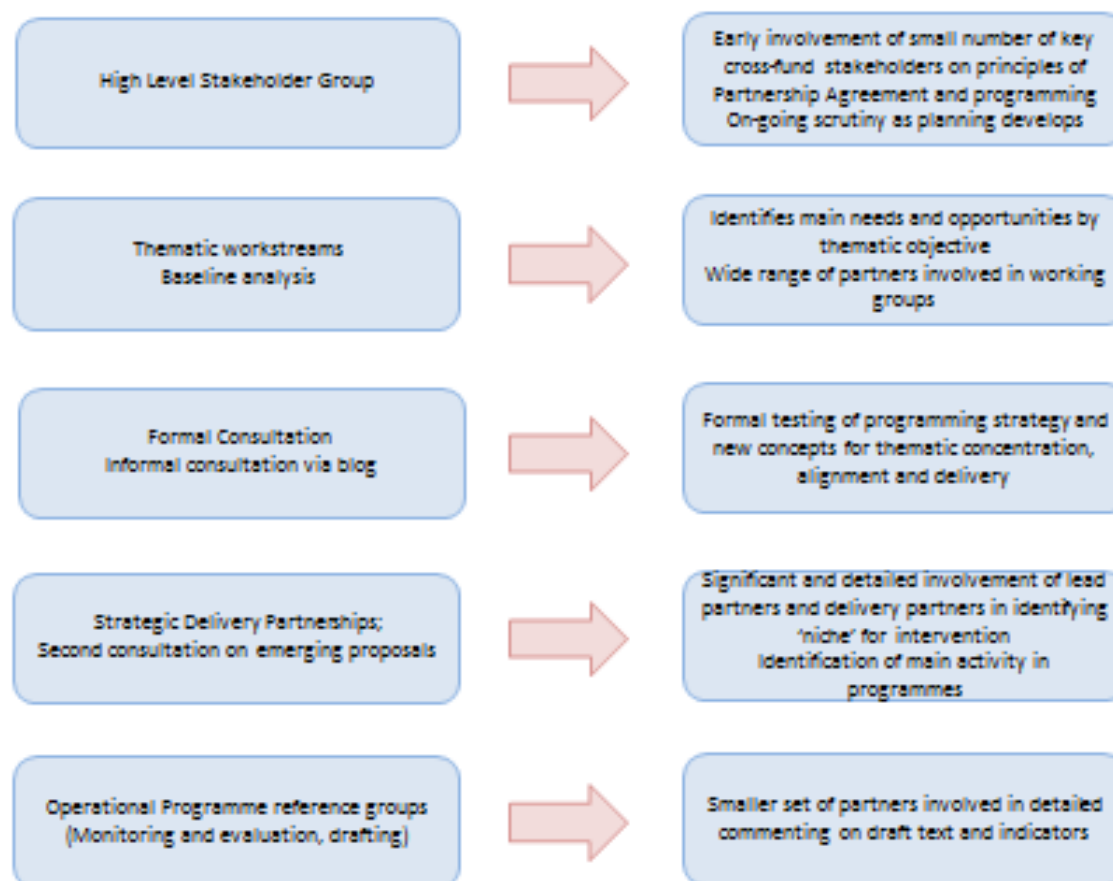
Figure 12: Employment rate by highest qualification, people aged 16-64, Scotland, 2012

Source: Annual Population Survey (ONS)

<i>Highest qualification</i>	<i>Emp. rate</i>
SVQ 5: Degree, Professional Qualification	84%
SVQ 4: HNC/HND or equivalent	79%
SVQ 3: Higher, A-Level or equivalent	72%
SVQ 2: Credit Standard Grade or equivalent	65%
SVQ 1: General Standard Grade or equivalent	57%
Other Qualifications	69%
No Qualifications	41%
Total	71%

Section 7.2 Involvement of relevant partners

Figure 15



Section 8: Coordination between the Funds

Figure 16

