

FINAL RESULTS OF THE 2007 DECEMBER AGRICULTURAL SURVEY

The final figures indicate that, compared with December 2006:-

- The number of cattle fell by 2.4 per cent from 1.87 million to 1.83 million.
- The number of sheep decreased, from 5.2 million to 5.1 million (1.6 per cent).
- Pig numbers decreased by 4.2 per cent from 470,000 to 450,000.
- The number of poultry rose by 4.9 per cent from 13.1 million to 13.7 million.
- The area of winter wheat rose by 11.4 per cent from 102,000 hectares to 114,000 hectares and the area of winter barley rose by 6.9 per cent from 55,000 hectares to 59,000 hectares. The area of winter oilseed rape decreased by 14.4 percent from 38,000ha to 33,000ha.

Notes:

1. All figures are rounded to the nearest 1000. Figures may not, therefore, add to totals.
2. Percentage figures, which have been calculated using unrounded figures, have been rounded to the nearest 0.1%.
3. The results of the December agricultural sample census are produced from a sample of returns from approximately 11,000 main agricultural holdings, from a total of around 26,000. Since these results are based on a sample, the estimates are subject to a degree of statistical uncertainty.
4. In 2000, a reclassification exercise was carried out which resulted in a number of main holdings being classified as minor holdings and vice versa. As these statistics cover main holdings only, there is a slight discontinuity between the data for 2000 and previous years. The reclassification exercise is now carried out on regular basis.

Further information and other agricultural statistics can be obtained from:

Agricultural Census Branch,
The Scottish Government Rural and Environment Research and Analysis Directorate,
1A West, Pentland House,
47 Robb's Loan,
EDINBURGH
EH14 1TY

Tel: 0131 244 5239

Fax: 0131 244 3065

Email: agric.stats@scotland.gsi.gov.uk

Website: <http://www.scotland.gov.uk/Topics/Statistics/Browse/Agriculture-Fisheries>

A NATIONAL STATISTICS PUBLICATION FOR SCOTLAND

AGRICULTURAL STATISTICS: FINAL RESULTS OF DECEMBER 2007 SAMPLE SURVEY OF MAIN HOLDINGS

Important note: See Note 4 regarding effect of holding reclassification carried out in 2000.

Table 1 Estimated number of cattle, 1997 to 2007 (thousands)

	1997	1998	1999	2000	2001	2002	2003	2004	2005	2006	2007	Percentage change between 2006 & 2007
Dairy herd												
Cows and heifers in milk	181	174	173	173	168	167	165	165	168	167	166	-0.5%
Cows in calf but not in milk	40	41	39	33	35	36	35	33	33	33	32	-1.7%
Total	221	216	212	206	204	203	200	198	201	199	198	-0.7%
Beef herd												
Cows and heifers in milk	271	273	260	254	265	258	262	259	256	245	248	1.5%
Cows in calf but not in milk	243	254	254	247	238	238	243	245	237	241	222	-7.9%
Total	515	526	513	502	502	496	505	503	493	486	470	-3.1%
Heifers in calf for the first time												
Dairy - 2 years and over	30	29	28	29	29	25	25	24	25	25	23	-9.3%
- Under 2 years	20	18	19	18	17	15	19	18	17	16	17	6.0%
Beef - 2 years and over	49	41	39	39	39	42	40	41	41	40	44	8.1%
- Under 2 years	30	21	23	20	23	21	21	23	21	21	23	8.4%
Total	129	109	109	106	108	103	105	105	104	103	107	3.5%
Bulls for service												
2 years and over	16	17	16	16	16	16	17	17	17	18	18	1.4%
Under 2 years	4	4	3	3	3	4	4	4	4	3	4	6.2%
Total	20	20	19	19	19	20	21	21	21	21	22	2.2%
Other cattle 2 years and over												
Male	28	24	29	24	28	29	25	26	29	31	31	-0.2%
Female for breeding - dairy	7	8	8	10	10	8	7	8	8	8	8	2.6%
- beef	16	13	11	11	17	21	23	17	17	17	19	8.7%
Female not for breeding	9	12	15	13	14	15	14	15	17	20	20	0.4%
Total	61	56	63	57	69	73	69	66	71	76	77	2.2%
Other cattle 1 year and over but under 2 years												
Male	203	211	204	211	212	214	212	214	201	205	193	-5.7%
Female for breeding - dairy	51	51	50	49	41	40	42	39	39	39	37	-5.6%
- beef	54	49	47	48	54	51	54	52	52	51	53	3.6%
Female not for breeding	134	143	151	148	138	135	133	135	141	141	134	-4.9%
Total	442	455	452	457	444	440	441	439	433	435	416	-4.4%
Other cattle 6 months and over but under 1 year												
Male	186	184	181	179	159	163	167	171	168	166	160	-3.5%
Female	202	202	195	191	163	165	168	173	175	170	166	-2.0%
Total	388	386	376	371	322	328	335	345	343	336	326	-2.7%
Other cattle under 6 months												
Male	115	110	111	113	113	116	116	113	110	103	100	-2.9%
Female	138	135	128	128	121	121	120	120	120	113	109	-2.9%
Total	253	245	239	241	235	236	235	233	230	216	209	-2.9%
Total cattle	2,027	2,012	1,983	1,958	1,904	1,899	1,911	1,909	1,898	1,871	1,826	-2.4%

Table 2 Estimated number of sheep, 1997 to 2007 (thousands)

	1997	1998	1999	2000	2001	2002	2003	2004	2005	2006	2007	Percentage change between 2006 & 2007
Sheep 1 year old or over												
Ewes kept for breeding	2,997	3,031	2,983	2,953	2,651	2,566	2,541	2,494	2,438	2,380	2,302	-3.3%
Shearling ewes put to ram	913	944	904	866	724	777	776	790	743	700	706	0.8%
Shearling ewes not put to ram	33	50	49	48	38	38	35	41	31	32	32	0.7%
Rams kept for service	112	111	110	108	97	95	95	95	93	91	90	-1.0%
Other sheep	142	168	150	128	131	127	116	147	123	125	129	3.7%
Total	4,196	4,304	4,195	4,104	3,641	3,604	3,563	3,567	3,429	3,328	3,259	-2.1%
Sheep under 1 year old												
Ewe lambs put to ram	142	123	97	92	97	79	100	91	86	87	89	2.0%
Ewe lambs for future breeding	834	863	781	778	687	698	699	622	605	587	605	3.2%
Ram lambs intended for service	38	41	33	36	30	31	33	33	31	29	30	2.0%
Other sheep and lambs	1,420	1,311	1,217	1,204	1,241	1,040	1,053	1,136	1,108	1,170	1,133	-3.2%
Total	2,435	2,337	2,128	2,109	2,055	1,848	1,884	1,881	1,830	1,873	1,857	-0.9%
Total sheep	6,631	6,641	6,323	6,213	5,696	5,452	5,447	5,448	5,259	5,201	5,116	-1.6%

Table 3 Estimated number of pigs, 1997 to 2007 (thousands)

	1997	1998	1999	2000	2001	2002	2003	2004	2005	2006	2007	Percentage change between 2006 & 2007
Breeding herd												
Sows in pig	43.2	37.0	38.6	38.3	42.2	35.1	34.2	33.5	31.7	31.4	27.8	-11.6%
Gilts in pig	13.7	11.8	7.6	5.2	5.8	4.3	4.2	7.4	3.7	4.7	4.4	-4.9%
Other sows for breeding	12.7	11.1	10.6	9.3	9.6	11.0	10.4	6.9	6.6	7.9	6.4	-18.8%
Total	69.6	60.0	56.7	52.8	57.6	50.4	48.8	47.9	42.0	44.0	38.6	-12.2%
Barren sows for fattening	0.8	1.2	0.8	0.9	2.1	1.0	0.7	0.9	0.5	0.7	1.1	48.8%
Gilts 50kg and over, not in pig but expected to be used for breeding	7.8	10.4	7.5	6.9	6.8	5.1	4.6	6.0	6.3	4.7	4.3	-8.0%
Boars being used for service	3.8	2.8	2.7	2.5	2.5	1.9	1.6	1.7	1.3	1.4	1.3	-2.3%
All other pigs												
110kg liveweight and over	1.1	4.7	2.5	1.5	2.1	2.6	6.4	5.1	9.8	6.2	4.8	-22.6%
80kg and under 110kg liveweight	58.8	65.7	54.0	54.5	62.6	53.9	56.1	80.5	78.4	62.8	65.4	4.1%
50kg and under 80kg liveweight	134.1	131.4	121.1	110.9	114.9	94.9	99.0	93.8	89.7	105.8	101.0	-4.6%
20kg and under 50kg liveweight	189.8	162.8	150.8	143.9	142.5	129.1	128.5	122.5	131.3	121.7	111.8	-8.1%
Under 20kg liveweight	185	164.4	155.9	141.8	181.8	147.7	131.3	131.7	133.8	122.4	121.5	-0.7%
Total	568.8	529.0	484.4	452.6	503.9	428.2	421.3	433.7	443.1	418.9	404.6	-3.4%
Total pigs	650.8	603.3	552.1	515.7	572.9	486.5	476.9	490.1	493.3	469.7	449.9	-4.2%

Table 4 Estimated number of poultry, 1997 to 2007 (thousands)

	1997	1998	1999	2000	2001	2002	2003	2004	2005	2006	2007	Percentage change between 2006 & 2007
Fowls for producing eggs for eating												
Pullets & hens in the laying flock:												
- Hens in first laying season	2,234	2,188	2,115	2,183	2,207	2,666	2,888	2,709	2,973	2,964	3,063	3.4%
- Moulted hens	34	49	33	36	34	35	27	32	30	34	39	14.8%
Pullets being reared for laying	788	642	868	917	812	801	948	1,090	944	905	1,071	18.3%
Total	3,057	2,879	3,017	3,136	3,053	3,503	3,864	3,830	3,947	3,903	4,174	6.9%
Fowls for breeding												
Breeding hens	1,492	1,057	927	1,505	1,168	1,034	1,320	1,235	1,302	1,681	1,119	-33.4%
Cocks	145	104	92	114	114	107	108	46	118	112	115	2.0%
Total	1,636	1,162	1,018	1,619	1,282	1,141	1,427	1,282	1,420	1,793	1,233	-31.2%
Other poultry (turkeys, broilers and other table birds, ducks, geese, guinea fowl)	9,183	8,146	8,102	9,004	9,739	8,358	9,564	9,282	9,265	7,363	8,288	12.6%
Total poultry	13,876	12,187	12,138	13,758	14,075	13,002	14,855	14,394	14,631	13,059	13,695	4.9%

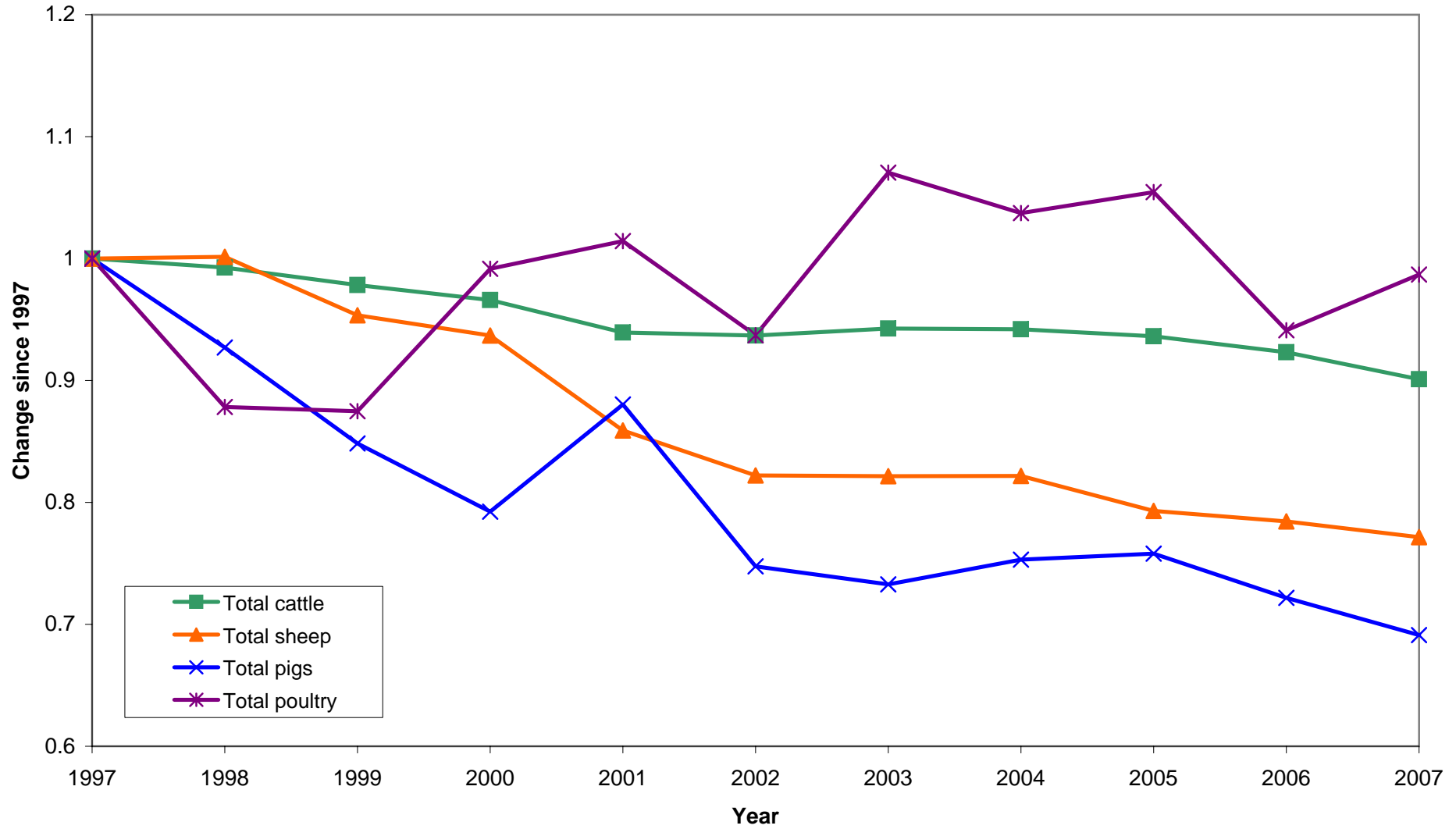
Table 5 Estimated farm labour, 1997 to 2007 (thousands)

	1997	1998	1999	2000	2001	2002	2003	2004	2005	2006	2007	Percentage change between 2006 & 2007
Occupiers												
- full time	12	12.4	12.1	11.8	11.4	11.1	10.8	10.7	10.5	10.1	9.8	-2.7%
- half time or more	3	3.0	2.9	3.1	3.0	2.9	2.7	2.8	2.8	2.8	2.6	-6.5%
- less than half time	7	7.6	7.9	6.4	5.7	5.6	5.3	5.7	5.8	5.7	5.2	-8.8%
Spouses												
- full time	2	2.2	2.2	2.2	2.0	2.0	1.9	1.9	1.8	1.8	1.7	-3.5%
- half time or more	2	2.4	2.3	2.3	2.3	2.1	2.0	2.0	2.0	1.9	1.9	-0.6%
- less than half time	7	7.4	7.3	6.5	6.2	6.2	6.2	6.3	6.4	6.2	5.8	-5.8%
Total occupiers and spouses	33	35.0	34.8	32.3	30.6	29.9	28.9	29.5	29.3	28.5	27.1	-4.9%
Regular staff												
Males - full-time	15.7	14.8	14.1	13.7	13.3	12.7	12.2	11.7	10.9	10.8	10.6	-1.3%
- part-time	3.1	3.0	3.0	3.5	3.3	3.5	3.5	3.4	3.8	3.2	3.2	-1.4%
Total	18.8	17.8	17.1	17.1	16.6	16.2	15.8	15.1	14.7	14.0	13.8	-1.3%
Females - full-time	1.0	0.9	0.8	1.1	1.1	1.1	1.1	1.3	1.0	1.2	1.2	-4.7%
- part-time	1.8	1.7	1.8	2.1	2.0	1.9	1.9	1.8	1.9	1.7	1.6	-4.9%
Total	2.8	2.6	2.7	3.2	3.0	3.0	3.0	3.1	2.9	2.9	2.8	-4.8%
Total regular staff	21.5	20.5	19.8	20.3	19.6	19.1	18.8	18.1	17.6	16.9	16.6	-1.9%
Casual and seasonal staff												
Males	2.1	2.0	2.0	2.4	2.2	2.2	2.4	2.7	2.3	2.5	2.8	12.5%
Females	0.6	0.6	0.6	0.5	0.5	0.6	0.6	0.7	0.6	0.6	0.7	16.9%
Total	2.7	2.6	2.7	2.9	2.8	2.8	2.9	3.3	2.9	3.1	3.5	13.4%

Table 6 Estimated crops and grass area, hay and silage production, 1997 to 2007

	1997	1998	1999	2000	2001	2002	2003	2004	2005	2006	2007	Percentage change between 2006 & 2007
Crops and grass sown by 1 December (thousand hectares)												
Wheat	111	76	108	76	96	86	103	93	96	102	114	11.4%
Barley	75	56	63	64	63	61	59	56	55	55	59	6.9%
Oats	9	6	7	4	5	7	6	5	7	7	7	5.1%
Oilseed rape	42	42	30	31	29	33	37	35	35	38	33	-14.4%
Grass sown	72	64	68	86	59	63	59	52	59	57	46	-18.7%
Grass cut (thousand hectares)												
For hay	80	51	65	59	59	45	53	42	50	53	42	-21.1%
For silage / haylage	318	296	308	284	317	299	293	304	293	305	307	0.7%
Production (thousand tonnes)												
Hay	549	296	371	355	352	277	321	263	308	359	269	-25.0%
Grass silage / haylage	6,916	6,873	6,480	6,565	6,908	6,695	6,472	6,456	6,295	6,232	6,638	6.5%
Arable silage	152	180	261	296	319	394	372	447	393	406	396	-2.5%

Livestock indices, ten year trends relative to 1997



Crops and labour indices, ten year trends relative to 1997

