



# Statistics Publication Notice

Health and Care Series

ISSN 1479-7569 (online)

## ADOPTION APPLICATIONS 2003

16 March 2004

### A Scottish Executive National Statistics Publication

Statistics on the number of adoption and freeing order applications in Scotland in 2003 have been published today by the Scottish Executive.

The main findings are:

- There were 373 adoption applications for which an outcome was reached in 2003. This was four per cent higher than in 2002 when there were 360 applications. Over the past twenty years, there has been an overall decline in the number of adoption applications – there were almost three times as many adoption applications in 1983 as in 2003.
- In 2003, 99 per cent of applications were granted. Since 1983, at least 95 per cent of adoption applications have been granted each year, and of the remainder, the majority were withdrawn, not refused.
- There were 15 adoptions from overseas, accounting for 4 per cent of all adoptions in 2003, which was broadly similar to previous years.
- 80 per cent of adoption applications were for children aged between one and eleven. The number of adoption applications for children in all age groups has declined since 1983, with the biggest decrease being in adoptions for children under the age of one, which decreased from 280 in 1983 to 20 in 2003. Since 1997 however, the number of adoptions applications for children under the age of five has been stable, while adoptions of children aged 5-17 have continued to decline.
- The majority of adoption applications for children under the age of five were made by non-relatives, while children aged between five and eighteen are more likely to be adopted by relatives. Most of the decline in adoptions applications since the mid-1990s can be explained by a reduction in adoptions by relatives of the child, e.g., step-parents; adoptions by non-relatives have remained fairly stable over this period.

- Adoption agencies identify children in need of adoption and bring together potential adopters with those children. They also provide care for children waiting to be adopted. Just over half of adoption applications were made through Local Authority adoption agencies, and almost one in ten were made via voluntary agencies. The majority of adoptions by non-relatives were made through agencies. Forty per cent of adoption applications were made without an agency, which were mainly applications made by relatives.
- There were 27 adoption applications by non-relatives, made without an agency. Non-relatives can apply to adopt without an agency after a child has lived with them for more than a year, for example adoptions by long term foster carers.
- The average number of days taken for adoption applications to reach an outcome decreased from 161 in 1994 to 109 in 1999. Since then, the average number of days has increased to 140 days in 2003.
- When a child is freed for adoption, birth parents relinquish their responsibilities to the child and are not involved in any subsequent adoption proceedings. The number of applications for the making of freeing orders reached a peak of 116 in 2000, and has fallen since then to 98 in 2003. As in previous years, the majority of these (85) were granted, with 12 being withdrawn and one being refused. The average age of children freed for adoption was four years and three months.

### **EUROPEAN COMPARISONS**

- Tables 12-14 compare the Scottish figures with adoptions in some other EU countries, over the five years to 2002.
- Over the past five years, between one and four per cent of adoptions in Scotland were from overseas. Foreign adoptions in the UK as a whole are slightly higher (five to six per cent of the total), but they are much higher in the other EU countries studied, from 34 per cent of adoptions in Germany to 81 per cent of adoptions in Norway in 2002.
- The number of adoptions per 1,000 children in Scotland (0.3) is similar to the figure for most of the countries studied, though Norway and Denmark have higher figures of 0.9 and 1.0 adoptions per thousand children, respectively.
- Scotland, Ireland, Norway, Denmark and Germany have seen declines in the number of children adopted over the five years to 2002, but England and Wales and the Netherlands have seen increases of nearly one third of the same period.
- In most of the selected countries (including Scotland), there is very little difference in the number of boys and girls adopted, but in Norway and Denmark, slightly more girls than boys are adopted. In both countries, a large proportion of the adoptions are of girls adopted from China.

## TABLES AND CHARTS

|          |  |
|----------|--|
| Table 1  | Adoption applications by gender, 1983 to 2003                            |
| Table 2  | Adoption applications by outcome, 1983 to 2003                           |
| Table 3  | Adoption applications by age group, 1983 to 2003                         |
| Table 4  | Adoption applications by age of child and relationship of adopters, 2003 |
| Table 5  | Adoption applications by relationship of adopters, 1989-2003             |
| Table 6  | Adoption applications by relationship of adopters, 2003                  |
| Table 7  | Relationship of adopters by type of agency used, 2003                    |
| Table 8  | Adoption applications by type of agency used, 1983-2003                  |
| Table 9  | Number of days between adoption application and outcome, 1994-2003       |
| Table 10 | Applications for freeing orders by outcome, 1983 to 2003                 |
| Table 11 | Applications for freeing orders by age, 2003                             |
| Table 12 | International comparisons: Adoptions by country, 1998-2002               |
| Table 13 | International comparisons: Adoptions by country and gender, 1998-2002    |
| Table 14 | International comparisons: Foreign adoptions by country, 1998-2002       |
| Chart 1  | Adoption applications by age, 1983-2003                                  |
| Chart 2  | Adoption applications by relationship of adopters, 1989-2003             |
| Chart 3  | Number of days between adoption application and outcome, 1994-2003       |

## BACKGROUND NOTES

1. Adoption applications are made to the Sheriff Courts in Scotland. Adoption applications are also considered by the Court of Session.
2. The tables include figures from 1983-2003, where data are available. The figures relate to the year in which the outcome of the application occurred.
3. Tables 12-14 compare the Scottish figures with adoptions in some other EU countries, over the past five years. The countries included were those for which comparable figures were available. Figures are included from 1998-2002, to show trends over recent years. 2003 figures are not included, as they are not yet available for most of the countries shown.
4. This Statistics Publication Notice and the supporting tables and charts are available on the Scottish Executive web site at <http://www.scotland.gov.uk/stats/bulletins/00329-00.asp>. Previous publications are available at <http://www.scotland.gov.uk/about/ED/IAC/00016135/adoptions.aspx>. There is now a single website providing access to all regular statistics collected on children in Scotland: the Scottish Children's Statistics Gateway at [www.scotland.gov.uk/statistics/children](http://www.scotland.gov.uk/statistics/children).
5. This is the last time that this data collection will take place. Statistics on the overall number of adoptions, including the gender and age of the child and relationship of adopters, are available from the General Register Office (Scotland) vital event statistics: <http://www.gro-scotland.gov.uk/grosweb/grosweb.nsf/pages/vtevents>. The Scottish Executive will collect new statistics on all looked after children who are moving towards a permanent placement, including adoptions – the link <http://www.scotland.gov.uk/about/ED/IAC/00016135/PermanencyForm.xls> gives details.

Figures from both sources will be included in the Scottish Executive's 'Children's Social Work Statistics' publication, in the future.

6. More detailed information is available on request – **media** should contact Matthew Marr on 0131 244 2972.

7. For public enquiries (**non-media**) about the information contained in this News Release, or for more detailed information, please contact Esther Roughsedge, Scottish Executive Education Department, Area 1-A, Victoria Quay, Edinburgh, EH6 6QQ. Telephone 0131 244 3745 or e-mail [children.statistics@scotland.gsi.gov.uk](mailto:children.statistics@scotland.gsi.gov.uk).

8. This is a National Statistics publication. National Statistics are produced to high professional standards set out in the National Statistics Code of Practice. They undergo regular quality assurance reviews to ensure that they meet customer needs. They are produced free from any political interference.

**Table 1: Number of adoption applications by gender, 1983 to 2003**

| Year                         | Boys | Girls | Total              | Of which, adoptions from overseas <sup>(2)</sup> | % of applications for boys |
|------------------------------|------|-------|--------------------|--|----------------------------|
| 1983                         | 575  | 506   | 1,081              | N.A.   | 53%                        |
| 1984                         | 492  | 446   | 938                | N.A.   | 52%                        |
| 1985                         | 462  | 480   | 942                | N.A.   | 49%                        |
| 1986                         | 556  | 500   | 1,056              | N.A.   | 53%                        |
| 1987                         | 551  | 472   | 1,023              | N.A.   | 54%                        |
| 1988                         | 452  | 384   | 836                | 7  | 54%                        |
| 1989                         | 461  | 397   | 858                | 11   | 54%                        |
| 1990                         | 385  | 393   | 778                | 7  | 49%                        |
| 1991                         | 321  | 340   | 737 <sup>(1)</sup> | 5  | 49%                        |
| 1992                         | 406  | 380   | 786                | 36   | 52%                        |
| 1993                         | 391  | 395   | 786                | 13   | 50%                        |
| 1994                         | 341  | 271   | 612                | 9  | 56%                        |
| 1995                         | 265  | 290   | 555                | 11   | 48%                        |
| 1996                         | 278  | 266   | 544                | 4  | 51%                        |
| 1997                         | 222  | 221   | 443                | 3  | 50%                        |
| 1998                         | 216  | 260   | 476                | 11   | 45%                        |
| 1999                         | 236  | 216   | 452                | 5  | 52%                        |
| 2000                         | 206  | 199   | 405                | 17   | 51%                        |
| 2001                         | 215  | 203   | 418                | 8  | 51%                        |
| 2002                         | 188  | 172   | 360                | 6  | 52%                        |
| 2003                         | 190  | 183   | 373                | 15   | 51%                        |
| <i>% change 2002 to 2003</i> | 1%   | 6%    | 4%                 | 150%   | -                          |
| <i>% change 1993 to 2003</i> | -51% | -54%  | -53%               | 15%  | -                          |
| <i>% change 1983 to 2003</i> | -67% | -64%  | -65%               | N.A.   | -                          |

(1) The 1991 figure includes 76 cases where information on the gender of the child was not available.

(2) N.A. indicates that figures are not available for that year.

**Table 2: Number of adoption applications by outcome of application, 1983 to 2003**

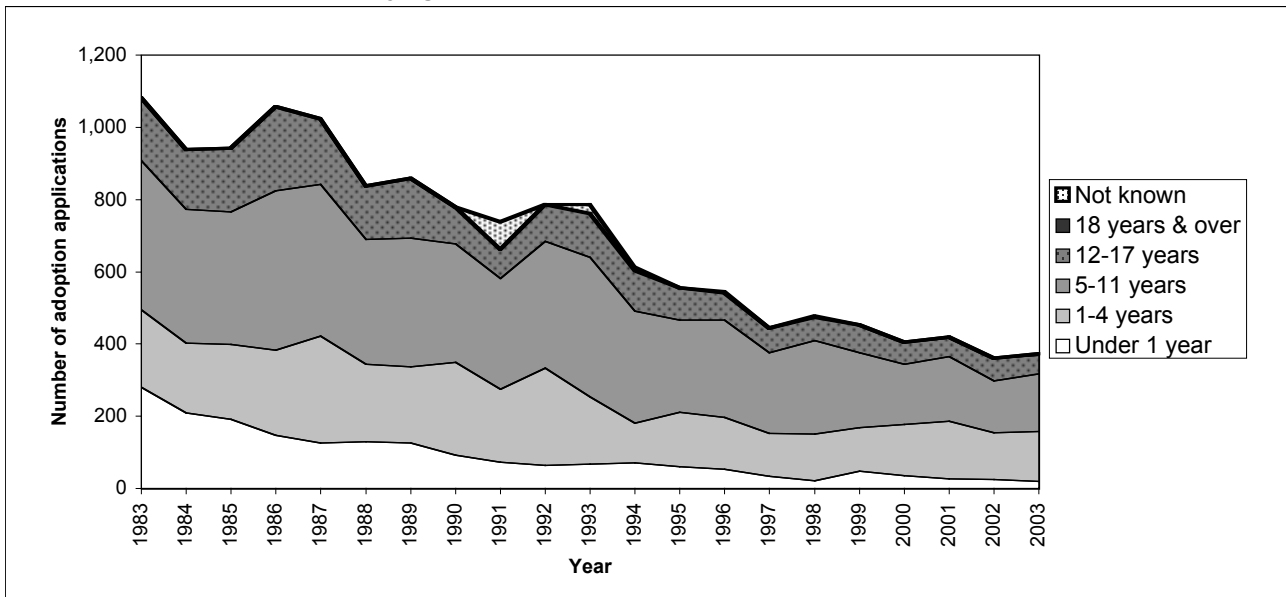
| Year                             | Granted     | Withdrawn   | Refused      | Other/ not known | Total       |
|----------------------------------|-------------|-------------|--------------|------------------|-------------|
| 1983                             | 1,058       | 11          | 6            | 6                | 1,081       |
| 1984                             | 920         | 9           | 6            | 3                | 938         |
| 1985                             | 915         | 17          | 6            | 4                | 942         |
| 1986                             | 1,012       | 23          | 7            | 14               | 1,056       |
| 1987                             | 989         | 20          | 5            | 9                | 1,023       |
| 1988                             | 810         | 14          | 7            | 5                | 836         |
| 1989                             | 843         | 10          | 3            | 2                | 858         |
| 1990                             | 757         | 10          | 7            | 4                | 778         |
| 1991                             | 716         | 13          | 1            | 7                | 737         |
| 1992                             | 759         | 22          | 2            | 3                | 786         |
| 1993                             | 754         | 25          | 6            | 1                | 786         |
| 1994                             | 589         | 12          | 8            | 3                | 612         |
| 1995                             | 535         | 17          | 2            | 1                | 555         |
| 1996                             | 534         | 4           | 4            | 2                | 544         |
| 1997                             | 423         | 16          | 2            | 2                | 443         |
| 1998                             | 458         | 12          | 3            | 3                | 476         |
| 1999                             | 438         | 9           | 0            | 5                | 452         |
| 2000                             | 399         | 3           | 2            | 1                | 405         |
| 2001                             | 414         | 2           | 2            | 0                | 418         |
| 2002                             | 351         | 7           | 1            | 1                | 360         |
| 2003                             | 370         | 2           | 0            | 1                | 373         |
| <i>% change<br/>2002 to 2003</i> | <i>5%</i>   | <i>-71%</i> | <i>-100%</i> | <i>0%</i>        | <i>4%</i>   |
| <i>% change<br/>1993 to 2003</i> | <i>-51%</i> | <i>-92%</i> | <i>-100%</i> | <i>0%</i>        | <i>-53%</i> |
| <i>% change<br/>1983 to 2003</i> | <i>-65%</i> | <i>-82%</i> | <i>-100%</i> | <i>-83%</i>      | <i>-65%</i> |

**Table 3: Number of adoption applications by age at time of application, 1983 to 2003**

| Year <sup>(1)</sup>          | Age group    |             |             |             |                 |             | Total no. of children | Average age of child <sup>(1)</sup> |
|------------------------------|--------------|-------------|-------------|-------------|-----------------|-------------|-----------------------|-------------------------------------|
|                              | Under 1 year | 1-4 years   | 5-11 years  | 12-17 years | 18 years & over | Not known   |                       |                                     |
| 1983                         | 280          | 215         | 412         | 174         | 0               | 0           | 1,081                 | N.A.                                |
| 1984                         | 209          | 193         | 371         | 165         | 0               | 0           | 938                   | N.A.                                |
| 1985                         | 191          | 208         | 367         | 176         | 0               | 0           | 942                   | N.A.                                |
| 1986                         | 148          | 235         | 441         | 232         | 0               | 0           | 1,056                 | N.A.                                |
| 1987                         | 125          | 297         | 420         | 181         | 0               | 0           | 1,023                 | N.A.                                |
| 1988                         | 130          | 213         | 347         | 146         | 0               | 0           | 836                   | N.A.                                |
| 1989                         | 125          | 212         | 356         | 165         | 0               | 0           | 858                   | N.A.                                |
| 1990                         | 93           | 256         | 328         | 101         | 0               | 0           | 778                   | N.A.                                |
| 1991                         | 72           | 202         | 308         | 79          | 0               | 76          | 737                   | N.A.                                |
| 1992                         | 63           | 270         | 352         | 101         | 0               | 0           | 786                   | N.A.                                |
| 1993                         | 67           | 186         | 386         | 121         | 0               | 26          | 786                   | N.A.                                |
| 1994                         | 71           | 109         | 311         | 112         | 0               | 9           | 612                   | N.A.                                |
| 1995                         | 60           | 151         | 256         | 88          | 0               | 0           | 555                   | 7 years 0 months                    |
| 1996                         | 54           | 142         | 271         | 73          | 0               | 4           | 544                   | 7 years 0 months                    |
| 1997                         | 33           | 120         | 222         | 68          | 0               | 0           | 443                   | 7 years 1 month                     |
| 1998                         | 22           | 129         | 259         | 64          | 0               | 2           | 476                   | 7 years 3 months                    |
| 1999                         | 47           | 121         | 208         | 76          | 0               | 0           | 452                   | 6 years 11 months                   |
| 2000                         | 35           | 142         | 166         | 61          | 1               | 0           | 405                   | 6 years 7 months                    |
| 2001                         | 26           | 160         | 179         | 51          | 2               | 0           | 418                   | 6 years 5 months                    |
| 2002                         | 25           | 130         | 142         | 63          | 0               | 0           | 360                   | 6 years 9 months                    |
| 2003                         | 20           | 138         | 160         | 51          | 3               | 1           | 373                   | 6 years 8 months                    |
| <i>% change 2002 to 2003</i> | <i>-20%</i>  | <i>6%</i>   | <i>13%</i>  | <i>-19%</i> | <i>-</i>        | <i>-</i>    | <i>4%</i>             | <i>-</i>                            |
| <i>% change 1993 to 2003</i> | <i>-70%</i>  | <i>-26%</i> | <i>-59%</i> | <i>-58%</i> | <i>-</i>        | <i>-96%</i> | <i>-53%</i>           | <i>-</i>                            |
| <i>% change 1983 to 2003</i> | <i>-93%</i>  | <i>-36%</i> | <i>-61%</i> | <i>-71%</i> | <i>-</i>        | <i>-</i>    | <i>-65%</i>           | <i>-</i>                            |

(1) N.A. indicates that figures are not available for that year.

**Chart 1: Adoption applications by age, 1983-2003**



**Table 4: Number of adoption applications by age of child and relationship of adopters, 2003**

| Age group         | Adopted by non-relatives | Adopted by relatives | Adopter relationship unknown | Total adoption applications | % adoptions by non-relatives <sup>(1)</sup> |
|-------------------|--------------------------|----------------------|------------------------------|-----------------------------|---|
| Under 1 year      | 18                       | 0                    | 2                            | 20                          | 100%  |
| 1-4 years         | 118                      | 14                   | 6                            | 138                         | 89%   |
| 5-11 years        | 81                       | 74                   | 5                            | 160                         | 52%   |
| 12-17 years       | 8                        | 42                   | 1                            | 51                          | 16%   |
| 18 years and over | 0                        | 3                    | 0                            | 3                           | 0%  |
| Unknown           | 1                        | 0                    | 0                            | 1                           | 100%  |
| <b>Total</b>      | <b>226</b>               | <b>133</b>           | <b>14</b>                    | <b>373</b>                  | <b>63%</b>                                  |

(1) Unknown values are excluded from the calculation of percentage values

**Table 5: Number of adoption applications by relationship of adopters, 1989-2003**

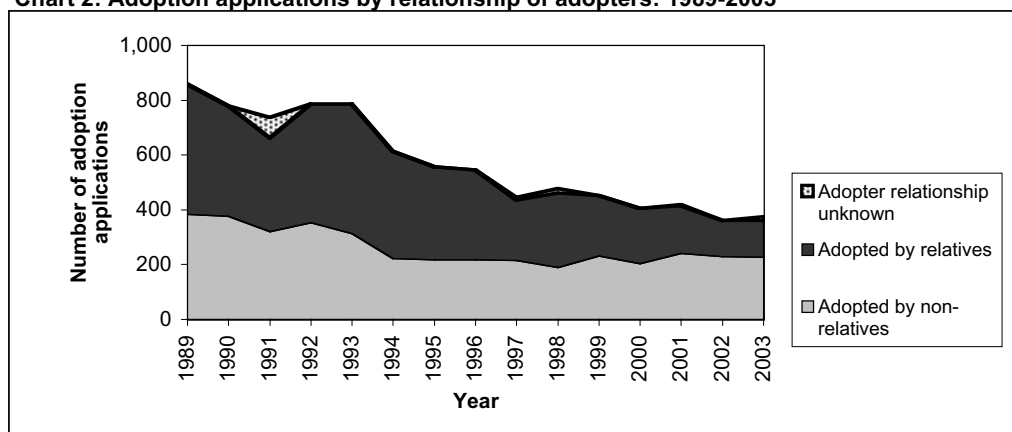
| Year                         | Adopted by non-relatives | Adopted by relatives | Adopter relationship unknown | Total adoption applications | % adoptions by non-relatives <sup>(1)</sup> |
|------------------------------|--------------------------|----------------------|------------------------------|-----------------------------|---|
| 1989                         | 384                      | 474                  | 0                            | 858                         | 45%   |
| 1990                         | 376                      | 402                  | 0                            | 778                         | 48%   |
| 1991                         | 321                      | 340                  | 76                           | 737                         | 49%   |
| 1992                         | 352                      | 434                  | 0                            | 786                         | 45%   |
| 1993                         | 314                      | 472                  | 0                            | 786                         | 40%   |
| 1994                         | 222                      | 390                  | 0                            | 612                         | 36%   |
| 1995                         | 217                      | 338                  | 0                            | 555                         | 39%   |
| 1996                         | 218                      | 326                  | 0                            | 544                         | 40%   |
| 1997                         | 214                      | 220                  | 9                            | 443                         | 49%   |
| 1998                         | 190                      | 271                  | 15                           | 476                         | 41%   |
| 1999                         | 231                      | 221                  | 0                            | 452                         | 51%   |
| 2000                         | 204                      | 201                  | 0                            | 405                         | 50%   |
| 2001                         | 241                      | 173                  | 4                            | 418                         | 58%   |
| 2002                         | 228                      | 132                  | 0                            | 360                         | 63%   |
| 2003                         | 226                      | 133                  | 14                           | 373                         | 63%   |
| <b>% change 2002 to 2003</b> | <b>-1%</b>               | <b>1%</b>            | <b>-</b>                     | <b>4%</b>                   | <b>-</b>                                    |
| <b>% change 1989 to 2003</b> | <b>-41%</b>              | <b>-72%</b>          | <b>-</b>                     | <b>-57%</b>                 | <b>-</b>                                    |

(1) Unknown values are excluded from the calculation of percentage values

**Table 6: Number of adoption applications by relationship of adopters, 2003**

|                       | Male Adopter   |             |                     |             |                 |           | Total      |
|-----------------------|----------------|-------------|---------------------|-------------|-----------------|-----------|------------|
|                       | Natural father | Step-father | Other male relative | No relation | No male adopter | Unknown   |            |
| Female Adopter        |                |             |                     |             |                 |           |            |
| Natural mother        | 0              | 116         | 0                   | 0           | 0               | 0         | 116        |
| Step-mother           | 6              | 0           | 0                   | 0           | 0               | 0         | 6          |
| Other female relative | 0              | 0           | 11                  | 0           | 0               | 0         | 11         |
| No relation           | 0              | 0           | 0                   | 221         | 1               | 0         | 222        |
| No female adopter     | 0              | 0           | 0                   | 4           | 0               | 0         | 4          |
| Unknown               | 0              | 0           | 0                   | 0           | 0               | 14        | 14         |
| <b>Total</b>          | <b>6</b>       | <b>116</b>  | <b>11</b>           | <b>225</b>  | <b>1</b>        | <b>14</b> | <b>373</b> |

**Chart 2: Adoption applications by relationship of adopters: 1989-2003**



**Table 7: Relationship of adopters by type of agency used, 2003**

| Adoption Agency              | Local Authority | Voluntary Agency | No Agency | No details provided | Total |
|------------------------------|-----------------|------------------|-----------|---------------------|-------|
| Adopted by non-relatives     | 172             | 27               | 27        | 0                   | 226   |
| Adopted by relatives         | 15              | 6                | 112       | 0                   | 133   |
| Adopter relationship unknown | 0               | 0                | 1         | 13                  | 14    |
| Total adoption applications  | 187             | 33               | 140       | 13                  | 373   |

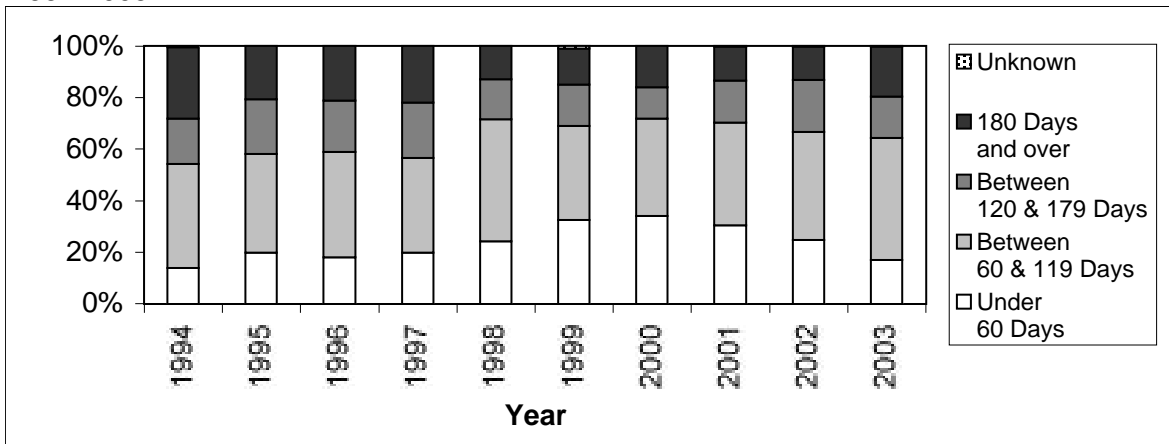
**Table 8: Number of adoption applications by type of agency used, 1983 to 2003**

| Year                         | Local Authority | Voluntary agency | No agency   | No details provided | Total       |
|------------------------------|-----------------|------------------|-------------|---------------------|-------------|
| 1983                         | 403             | 97               | 581         | 0                   | 1,081       |
| 1984                         | 316             | 101              | 521         | 0                   | 938         |
| 1985                         | 395             | 72               | 475         | 0                   | 942         |
| 1986                         | 410             | 80               | 566         | 0                   | 1,056       |
| 1987                         | 384             | 71               | 568         | 0                   | 1,023       |
| 1988                         | 355             | 58               | 423         | 0                   | 836         |
| 1989                         | 326             | 49               | 482         | 1                   | 858         |
| 1990                         | 327             | 65               | 386         | 0                   | 778         |
| 1991                         | 250             | 54               | 357         | 76                  | 737         |
| 1992                         | 257             | 36               | 493         | 0                   | 786         |
| 1993                         | 281             | 42               | 463         | 0                   | 786         |
| 1994                         | 192             | 26               | 394         | 0                   | 612         |
| 1995                         | 177             | 30               | 348         | 0                   | 555         |
| 1996                         | 208             | 14               | 322         | 0                   | 544         |
| 1997                         | 198             | 27               | 209         | 9                   | 443         |
| 1998                         | 146             | 26               | 291         | 13                  | 476         |
| 1999                         | 162             | 42               | 248         | 0                   | 452         |
| 2000                         | 149             | 47               | 209         | 0                   | 405         |
| 2001                         | 185             | 38               | 191         | 4                   | 418         |
| 2002                         | 160             | 47               | 153         | 0                   | 360         |
| 2003                         | 187             | 33               | 140         | 13                  | 373         |
| <i>% change 2002 to 2003</i> | <i>17%</i>      | <i>-30%</i>      | <i>-8%</i>  | <i>-</i>            | <i>4%</i>   |
| <i>% change 1993 to 2003</i> | <i>-33%</i>     | <i>-21%</i>      | <i>-70%</i> | <i>-</i>            | <i>-53%</i> |
| <i>% change 1983 to 2003</i> | <i>-54%</i>     | <i>-66%</i>      | <i>-76%</i> | <i>-</i>            | <i>-65%</i> |

**Table 9: Number of days between adoption application and outcome, 1994-2003**

| Year | Under 60 Days | Between 60 & 119 Days | Between 120 & 179 Days | 180 Days and over | Unknown | Total (Number of applications) | Average number of days |
|------|---------------|-----------------------|------------------------|-------------------|---------|--------------------------------|------------------------|
|      | Percentage    |                       |                        |                   |         |                                |                        |
| 1994 | 13.6          | 40.7                  | 17.5                   | 27.7              | 0.5     | 612                            | 161 days               |
| 1995 | 19.6          | 38.4                  | 21.3                   | 20.7              | 0.0     | 555                            | 133 days               |
| 1996 | 17.8          | 41.0                  | 19.9                   | 21.3              | 0.0     | 544                            | 137 days               |
| 1997 | 19.6          | 37.0                  | 21.5                   | 22.1              | 0.0     | 443                            | 135 days               |
| 1998 | 24.2          | 47.3                  | 15.5                   | 13.0              | 0.0     | 476                            | 123 days               |
| 1999 | 32.3          | 36.7                  | 15.9                   | 13.9              | 1.1     | 452                            | 109 days               |
| 2000 | 34.1          | 37.8                  | 12.1                   | 16.0              | 0.0     | 405                            | 114 days               |
| 2001 | 30.4          | 39.7                  | 16.5                   | 13.2              | 0.2     | 418                            | 111 days               |
| 2002 | 24.7          | 41.9                  | 20.3                   | 12.8              | 0.3     | 360                            | 118 days               |
| 2003 | 16.9          | 47.5                  | 16.1                   | 19.3              | 0.3     | 373                            | 140 days               |

**Chart 3: Number of days between adoption application and outcome, 1994-2003**



**Table 10: Applications for the making of freeing orders by outcome, 1983 to 2003**

| Year                             | Granted | Refused <sup>(1)</sup> | Withdrawn <sup>(1)</sup> | Total <sup>(1)</sup> |
|----------------------------------|---------|------------------------|--------------------------|----------------------|
| 1983                             | 2       | N.A.                   | N.A.                     | 2                    |
| 1984                             | 0       | N.A.                   | N.A.                     | 0                    |
| 1985                             | 3       | N.A.                   | N.A.                     | 3                    |
| 1986                             | 28      | N.A.                   | N.A.                     | 28                   |
| 1987                             | 38      | N.A.                   | N.A.                     | 38                   |
| 1988                             | 59      | N.A.                   | N.A.                     | 59                   |
| 1989                             | 34      | N.A.                   | N.A.                     | 34                   |
| 1990                             | 51      | N.A.                   | N.A.                     | 51                   |
| 1991                             | 76      | N.A.                   | N.A.                     | 76                   |
| 1992                             | 70      | N.A.                   | N.A.                     | 70                   |
| 1993                             | 62      | N.A.                   | N.A.                     | 62                   |
| 1994                             | 59      | N.A.                   | N.A.                     | 59                   |
| 1995                             | 42      | 2                      | 4                        | 48                   |
| 1996                             | 58      | 5                      | 7                        | 70                   |
| 1997                             | 64      | 2                      | 5                        | 71                   |
| 1998                             | 89      | 0                      | 0                        | 89                   |
| 1999                             | 81      | 3                      | 2                        | 86                   |
| 2000                             | 113     | 0                      | 3                        | 116                  |
| 2001                             | 101     | 3                      | 7                        | 111                  |
| 2002                             | 72      | 6                      | 18                       | 96                   |
| 2003 <sup>(2)</sup>              | 85      | 1                      | 12                       | 98                   |
| <i>% change<br/>2002 to 2003</i> | 18%     | -83%                   | -33%                     | 2%                   |
| <i>% change<br/>1995 to 2003</i> | 102%    | -50%                   | 200%                     | 104%                 |

(1) For 1983-1994, information is only available for freeing orders that were granted.

(2) In 2003, there were two applications for the revocation of freeing orders.

**Table 11: Applications for the making of freeing orders by age at time of application, 2003**

| Age group    | Number of children   |
|--------------|----------------------|
| Under 1 year | 7                    |
| 1-4 years    | 57                   |
| 5-11 years   | 32                   |
| 12-17 years  | 2                    |
| Total        | 98                   |
| Average age  | 4 years and 3 months |

**Table 12: Comparisons with selected EU countries**  
**Total number of children adopted by country, 1998 to 2002**

**Total number of adoptions**

| Year                  | Scotland <sup>(1)</sup> | England & Wales | Republic of Ireland | Norway | Denmark | Germany | Netherlands |
|-----------------------|-------------------------|-----------------|---------------------|--------|---------|---------|-------------|
| 1998                  | 458                     | 4,386           | 659                 | 1,094  | 1,415   | 7,119   | 937         |
| 1999                  | 438                     | 4,317           | 600                 | 802    | 1,429   | 6,399   | 974         |
| 2000                  | 399                     | 4,940           | 512                 | 792    | 1,354   | 6,373   | 989         |
| 2001                  | 414                     | 5,981           | 456                 | 908    | 1,291   | 5,909   | 1,119       |
| 2002                  | 351                     | 5,680           | 602                 | 989    | 1,261   | 5,668   | 1,233       |
| % change 1998 to 2002 | -23%                    | 30%             | -9%                 | -10%   | -11%    | -20%    | 32%         |

(1) To be comparable with other countries, the Scottish figures are for adoption applications which were granted (see Table 2)

**Adoptions per 1,000 children aged 0-18**

| Year | Scotland | England & Wales | Republic of Ireland <sup>(1)</sup> | Norway | Denmark | Germany <sup>(2)</sup> | Netherlands |
|------|----------|-----------------|------------------------------------|--------|---------|------------------------|-------------|
| 1998 | 0.4      | 0.4             | 0.3                                | 1.0    | 1.2     | 0.5                    | 0.3         |
| 1999 | 0.4      | 0.4             | 0.3                                | 0.7    | 1.2     | 0.5                    | 0.3         |
| 2000 | 0.4      | 0.4             | 0.3                                | 0.7    | 1.1     | 0.5                    | 0.3         |
| 2001 | 0.4      | 0.5             | 0.3                                | 0.8    | 1.1     | 0.5                    | 0.3         |
| 2002 | 0.3      | 0.5             | 0.2                                | 0.9    | 1.0     | 0.5                    | 0.4         |

(1) Republic of Ireland: per 1,000 children aged 0-19

(2) Germany: per 1,000 children aged 0-15

**Table 13: Comparisons with selected EU countries**  
**Total number of children adopted, by country and gender, 1998 to 2002**

**Total number of adoptions**

| Year                  | Scotland <sup>(1)</sup> |        |             | England & Wales |        |              | Norway |        |              | Denmark |        |              | Germany |        |              |
|-----------------------|-------------------------|--------|-------------|-----------------|--------|--------------|--------|--------|--------------|---------|--------|--------------|---------|--------|--------------|
|                       | Male                    | Female | Total       | Male            | Female | Total        | Male   | Female | Total        | Male    | Female | Total        | Male    | Female | Total        |
| 1998                  | 208                     | 250    | <b>458</b>  | 2,214           | 2,172  | <b>4,386</b> | 515    | 579    | <b>1,094</b> | 631     | 784    | <b>1,415</b> | 3,551   | 3,568  | <b>7,119</b> |
| 1999                  | 229                     | 209    | <b>438</b>  | 2,114           | 2,202  | <b>4,317</b> | 380    | 422    | <b>802</b>   | 683     | 746    | <b>1,429</b> | 3,171   | 3,228  | <b>6,399</b> |
| 2000                  | 202                     | 197    | <b>399</b>  | 2,452           | 2,488  | <b>4,940</b> | 368    | 424    | <b>792</b>   | 596     | 758    | <b>1,354</b> | 3,180   | 3,193  | <b>6,373</b> |
| 2001                  | 213                     | 201    | <b>414</b>  | 3,011           | 2,970  | <b>5,981</b> | 379    | 529    | <b>908</b>   | 552     | 739    | <b>1,291</b> | 2,884   | 3,025  | <b>5,909</b> |
| 2002                  | 183                     | 168    | <b>351</b>  | 2,871           | 2,809  | <b>5,680</b> | 376    | 613    | <b>989</b>   | 576     | 685    | <b>1,261</b> | 2,894   | 2,774  | <b>5,668</b> |
| % change 1998 to 2002 | -12%                    | -33%   | <b>-23%</b> | 30%             | 29%    | <b>30%</b>   | -27%   | 6%     | <b>-10%</b>  | -9%     | -13%   | <b>-11%</b>  | -19%    | -22%   | <b>-20%</b>  |

(1) To be comparable with other countries, the Scottish figures are for adoption applications which were granted (see Table 2)

**Percentages**

| Year | Scotland |       |             | England & Wales |       |             | Norway |       |             | Denmark |       |             | Germany |       |             |
|------|----------|-------|-------------|-----------------|-------|-------------|--------|-------|-------------|---------|-------|-------------|---------|-------|-------------|
|      | % Male   | % Fem | Total       | % Male          | % Fem | Total       | % Male | % Fem | Total       | % Male  | % Fem | Total       | % Male  | % Fem | Total       |
| 1998 | 45%      | 55%   | <b>100%</b> | 50%             | 50%   | <b>100%</b> | 47%    | 53%   | <b>100%</b> | 45%     | 55%   | <b>100%</b> | 50%     | 50%   | <b>100%</b> |
| 1999 | 52%      | 48%   | <b>100%</b> | 49%             | 51%   | <b>100%</b> | 47%    | 53%   | <b>100%</b> | 48%     | 52%   | <b>100%</b> | 50%     | 50%   | <b>100%</b> |
| 2000 | 51%      | 49%   | <b>100%</b> | 50%             | 50%   | <b>100%</b> | 46%    | 54%   | <b>100%</b> | 44%     | 56%   | <b>100%</b> | 50%     | 50%   | <b>100%</b> |
| 2001 | 51%      | 49%   | <b>100%</b> | 50%             | 50%   | <b>100%</b> | 42%    | 58%   | <b>100%</b> | 43%     | 57%   | <b>100%</b> | 49%     | 51%   | <b>100%</b> |
| 2002 | 52%      | 48%   | <b>100%</b> | 51%             | 49%   | <b>100%</b> | 38%    | 62%   | <b>100%</b> | 46%     | 54%   | <b>100%</b> | 51%     | 49%   | <b>100%</b> |

**Table 14: Comparisons with selected EU countries**  
**Total number of foreign children adopted, by country, 1998 to 2002**

**Total number of adoptions<sup>(1)</sup>**

| Year | Scotland <sup>(2)</sup> |       | UK      |       | Republic of Ireland |       | Norway  |       | Denmark |       | Germany |       |
|------|-------------------------|-------|---------|-------|---------------------|-------|---------|-------|---------|-------|---------|-------|
|      | Foreign                 | Total | Foreign | Total | Foreign             | Total | Foreign | Total | Foreign | Total | Foreign | Total |
| 1998 | 11                      | 458   | 212     | N.A.  | 259                 | 659   | 803     | 1,094 | N.A.    | 1,415 | 1,889   | 7,119 |
| 1999 | 5                       | 438   | 264     | N.A.  | 283                 | 600   | 539     | 802   | 643     | 1,429 | 1,765   | 6,399 |
| 2000 | 17                      | 399   | 312     | 5,500 | 209                 | 512   | 659     | 792   | 683     | 1,354 | 1,891   | 6,373 |
| 2001 | 8                       | 414   | 326     | 6,600 | 163                 | 456   | 721     | 908   | 646     | 1,291 | 1,789   | 5,909 |
| 2002 | 6                       | 351   | 329     | 6,200 | 336                 | 602   | 802     | 989   | 589     | 1,261 | 1,919   | 5,668 |

(1) N.A. indicates that figures are not available for that year.

(2) To be comparable with other countries, the Scottish figures are for adoption applications which were granted (see Table 2)

**Percentages<sup>(1)</sup>**

| Year | Scotland |       | UK      |       | Republic of Ireland |       | Norway  |       | Denmark |       | Germany |       |
|------|----------|-------|---------|-------|---------------------|-------|---------|-------|---------|-------|---------|-------|
|      | Foreign  | Total | Foreign | Total | Foreign             | Total | Foreign | Total | Foreign | Total | Foreign | Total |
| 1998 | 2        | 100   | N.A.    | N.A.  | 39                  | 100   | 73      | 100   | N.A.    | 100   | 27      | 100   |
| 1999 | 1        | 100   | N.A.    | N.A.  | 47                  | 100   | 67      | 100   | 45      | 100   | 28      | 100   |
| 2000 | 4        | 100   | 6       | 100   | 41                  | 100   | 83      | 100   | 50      | 100   | 30      | 100   |
| 2001 | 2        | 100   | 5       | 100   | 36                  | 100   | 79      | 100   | 50      | 100   | 30      | 100   |
| 2002 | 2        | 100   | 5       | 100   | 56                  | 100   | 81      | 100   | 47      | 100   | 34      | 100   |

(1) N.A. indicates that figures are not available for that year.