



Statistics Publication Notice

Education Series

ISSN 1479-7569

PLACING REQUESTS IN LOCAL AUTHORITY SCHOOLS IN SCOTLAND, 2003/04

15 March 2005

A Scottish Executive National Statistics Publication

This document contains results of the latest annual survey of placing requests (requests by parents to local authorities that a child be placed in a specified school). The latest survey covers August 2003 to July 2004 inclusive.

The main findings for 2003/04 are:

- The total number of placing requests **received** in 2003/04 was 31,076, a decrease of one per cent on the 2002/03 figure. The figure has changed little over the last decade (Table 1).
- Eighty six per cent of all requests were granted compared to 82 per cent in 2002/03. In recent years, this rate had been declining slowly.
- Where requests were **refused**, "Accommodation constraints" was the reason reported in 59 per cent of cases in primary schools (excluding early entry) and 61 per cent of cases in secondary schools (Table 8).
- One per cent of placing requests (223) were for **early entry** to primary, of which 35 per cent were granted (Table 2).
- Sixty four per cent (19,782) were other **primary** requests, of which 91 per cent were granted. Placing requests received for stage P1 (excluding early entry) represented 23 per cent of the pupil roll (Tables 2 and 7).
- Thirty five per cent of placing requests (10,956) were for **secondary**, of which 78 per cent were granted. Placing requests for stage S1 represented 13 per cent of the pupil roll (Tables 2 and 7).
- **Special** schools accounted for 0.4 per cent of requests (115), of which 83 per cent were granted (Table 2).
- There were 3,209 requested **deferrals** of entry to mainstream primary schools and 78 requested deferrals of entry to special school (Table 11).

TABLES

- Table 1 Total placing requests received, by sector (excluding pre-school) and outcome 1995/96 to 2003/04
- Table 2 Placing requests received and percentage granted, by sector 1990/91 to 2003/04
- Table 3 Placing requests by outcome, primary schools
- Table 4 Placing requests by outcome, secondary schools
- Table 5 Placing requests by outcome, special schools
- Table 6 Placing requests received and granted by sector and local authority
- Table 7 Placing requests received as a percentage of stage roll, primary and secondary schools
- Table 8 Placing requests refused, by reason for refusal and sector
- Table 9 Placing requests refused (percentages), by reason for refusal and sector
- Table 10 Placing requests refused (percentages), by reason for refusal and sector, 1997/98 to 2003/04
- Table 11 Requests for deferred entry to P1

CHARTS

- Chart 1 - Placing requests received 1990/91 to 2003/04
- Chart 2 - Outcome of placing requests to primary, secondary and special schools

BACKGROUND NOTES

1. In this Statistics Publication Notice, a placing request is defined as a request that a child be placed in a specified school under the control of the local authority concerned. The figures also include requests that a child would not have to move to another school as a result of a change of residence.

It excludes:

- requests by parents of children who have been recorded as having special educational needs to have their child placed in a grant-aided or independent special school;
 - requests for a child to be placed in the school which he/she would, in any event, have attended, except for those children who are under statutory entry age for primary school;
 - requests for placements in nursery schools.
2. The systems operated by local authorities vary considerably. Some authorities operate a flexible policy whereby arrangements are made by the parent contacting the head teacher, without the involvement of the education authority. In this Statistics Publication Notice, a statutory request is defined as a written request, either to the local authority or to a school, that a placement be made. Where an oral request has been followed by a statutory request, only the latter is counted.
 3. The usual arrangements for pupils entering P1 are that children whose 5th birthday falls between the start of March and the end of February start school together in the August in the middle of that period. For example, pupils whose 5th birthday is between the start of March 2003 and the end of February 2004 would generally start school in August 2003. Requests for entry under the statutory entry age are for a child to enter in the August of the year before the normal entry date.
 4. In Table 7, the number of placing requests have been expressed as percentages of the relevant pupil populations as at September 2003. Note that most requests in 2003/04 would be for placement at the start of the 2004/05 school year. However, pupil figures for September 2004 were not available at time of going to press.
 5. Grounds in 2003/04 for refusing a placing request include:
 - a) where placing a child in school would make it necessary to employ an additional teacher;
 - b) where it would give rise to significant expenditure on extending or altering accommodation;
 - c) where it is likely to be seriously detrimental to order and discipline in the school;
 - d) where it would be likely to be seriously detrimental to the educational well-being of the pupils already at the school;
 - e) where it would be seriously detrimental to the continuity of the child's education;
 - f) if the education normally provided at the specified school is not suited to the age, ability or aptitude of the child;
 - g) if the education authority have already required the child to discontinue his/her attendance at the specified school;
 - h) if, where the specified school is a special school, the child does not have special educational needs requiring the education or special facilities normally provided at that school;
 - i) if the specified school is a single sex school and the child is not of the sex admitted to the school;

- j) where in certain circumstances schools retain places for children moving into the catchment area.
 - k) accepting the request would make it necessary for the council to create an additional class or employ an additional teacher at a future stage in the child's education.
 - l) under the terms of Section 38(1) of the standards in Scotland's Schools etc Act 2000 the education normally provided at the specified school would not be suited to the ability and aptitude of the child.
6. The full publication is available through the following link
<http://www.scotland.gov.uk/stats/bulletins/00407-00.asp>
7. This is a **National Statistics** publication. National Statistics are produced to high professional standards set out in the National Statistics Code of Practice. They undergo regular quality assurance reviews to ensure that they meet customer needs. They are produced free from any political interference.

Enquiries

8. Public enquiries (non-media) about the information contained in this News Release should be addressed to Mal Cooke, The Scottish Executive Education Department, Room 1A, Victoria Quay, Edinburgh EH6 6QQ. Telephone 0131 244 1689 or email
school.stats@scotland.gsi.gov.uk
9. Media enquiries about the information in this statistical publication notice should be addressed to:
Rona Dunbar, tel. 0131 244 2670

Statistics Publication Notice
15 March 2005

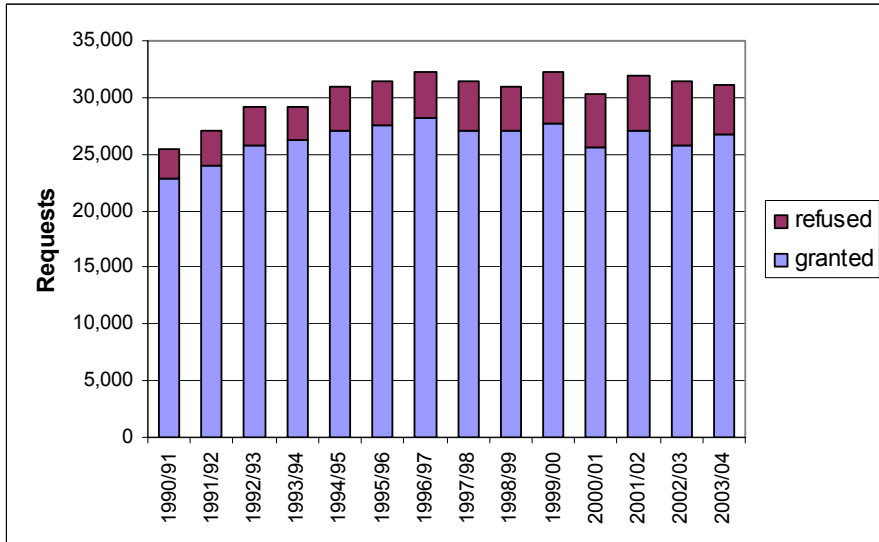
Table 1: Total Placing Requests made to primary, secondary and special schools (excludes pre-school requests), by outcome 1995/96 to 2003/04 ⁽¹⁾

	1995/96	1996/97	1997/98	1998/99	1999/2000	2000/01	2001/02	2002/03	2003/04
Total requests received	31,438	32,281	31,515	31,011	32,231	30,227	31,872	31,428	31,076
Decisions made on placing requests at the initial stage									
Requests granted at initial stage	27,465	28,062	26,922	26,952	27,633	25,467	26,937	25,694	26,601
Requests refused at initial stage	2,728	2,960	3,101	2,634	3,042	3,155	3,143	3,852	3,007
Requests under consideration	295	243	306	285	237	283	207	288	223
Requests withdrawn prior to consideration	950	1,016	1,186	1,140	1,319	1,322	1,585	1,594	1,245
Decisions made following reference to appeal committee									
Appeals granted	86	82	84	43	61	71	96	125	163
Appeals refused	331	453	439	358	535	550	527	614	325
Appeals under consideration	37	7	7	7	2	3	3	7	5
Appeals withdrawn prior to consideration	131	214	245	168	225	330	122	384	192
Decisions made following appeal to Sheriff									
Appeals granted	-	2	3	-	-	1	8	2	1
Appeals refused	8	1	6	-	1	2	-	1	-
Appeals under consideration	8	8	2	6	4	10	1	9	1
Appeals withdrawn prior to consideration	5	16	12	5	17	16	18	24	2
Total granted ⁽²⁾									
Number	27,551	28,146	27,009	26,995	27,694	25,539	27,041	25,821	26,765
Percentage	87.6	87.2	85.7	87.0	85.9	84.5	84.8	82.2	86.1

(1) Year from 1 August to 31 July

(2) Granted at initial stage, appeal committee or appeal to Sheriff

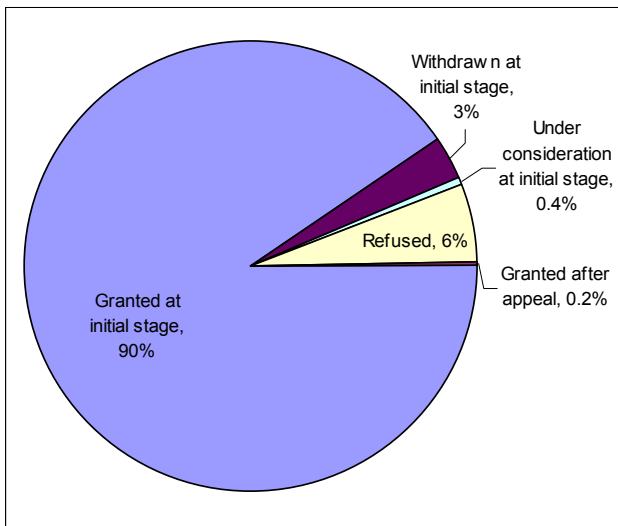
Chart 1: Placing requests received, 1990/91 to 2003/04⁽¹⁾⁽²⁾⁽³⁾



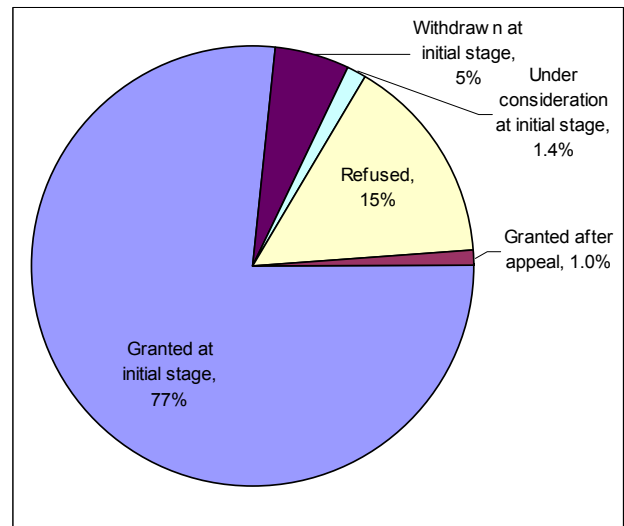
- (1) Year from 1 August to 31 July.
- (2) Including special schools and excluding pre-school education.
- (3) Granted at initial stage, appeal committee or appeal to Sheriff.

Chart 2: Outcome of placing requests to primary, secondary and special schools, 2003/04

Primary (including under statutory age requests for early entry to primary school)



Secondary



Special

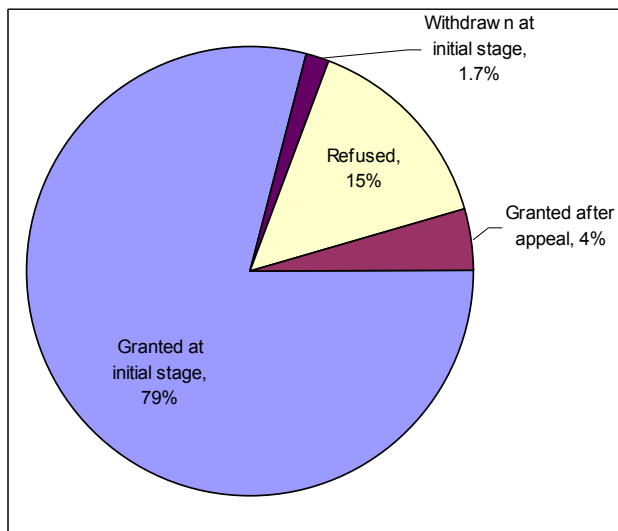


Table 2: Placing requests received and granted, by sector 1990/91 to 2003/04

Session ⁽¹⁾	Primary				Secondary		Special ⁽³⁾	
	Under statutory entry age		Other primary		Received	Percentage granted ⁽²⁾	Received	Percentage granted ⁽²⁾
	Received	Percentage granted ⁽²⁾	Received	Percentage granted ⁽²⁾				
1990/91	998	37.4	15,541	95.0	8,867	87.5	n/a	n/a
1991/92	1,163	32.0	16,263	95.4	9,566	84.0	n/a	n/a
1992/93	1,064	36.2	17,565	94.1	10,534	83.8	n/a	n/a
1993/94	954	27.3	18,099	93.7	10,126	88.5	n/a	n/a
1994/95	855	26.3	19,780	91.9	10,274	83.6	24	100.0
1995/96	861	20.1	19,497	91.3	11,057	86.4	22	90.9
1996/97	617	33.7	20,695	92.0	10,956	81.2	13	53.8
1997/98	415	23.1	19,846	90.4	11,248	79.7	6	83.3
1998/99	327	21.7	19,459	91.3	11,155	81.6	70	92.9
1999/00	299	32.1	20,554	92.1	11,286	76.3	92	69.6
2000/01	218	29.4	18,919	90.7	10,959	74.9	131	72.5
2001/02	186	21.5	20,492	90.1	11,051	76.2	142	78.2
2002/03	176	23.9	19,440	89.4	11,682	71.1	120	75.0
2003/04	223	34.5	19,782	91.3	10,956	77.8	115	83.5

(1) Year from 1 August to 31 July.

(2) Granted at initial stage, appeal committee or appeal to Sheriff

(3) Data for special schools not available before 1994/95

**Table 3: Placing requests by outcome, primary schools,
1 August 2003 to 31 July 2004**

	Total	Under school age	Other primary		
			Total	P1	P2-P7
Total Requests Received	20,005	223	19,782	12,868	6,914
Decisions at the initial stage					
Granted	18,097	76	18,021	11,600	6,421
Refused	1,187	121	1,066	772	294
Under consideration	74	1	73	24	49
Withdrawn	647	25	622	472	150
References to the appeal committee					
Received	258	20	238	211	27
Granted	46	1	45	34	11
Refused	116	11	105	95	10
Under consideration	2	1	1	1	-
Withdrawn	94	7	87	81	6
Appeals to Sheriff					
Received	1	-	1	1	-
Granted	1	-	1	1	-
Refused	-	-	-	-	-
Under consideration	-	-	-	-	-
Withdrawn	-	-	-	-	-
Total granted ⁽¹⁾					
Number	18,144	77	18,067	11,635	6,432
Percentage	90.7	34.5	91.3	90.4	93.0

(1) Granted at initial stage, appeal committee or appeal to Sheriff.

**Table 4: Placing requests by outcome, secondary schools,
1 August 2003 to 31 July 2004**

	Total	S1	S2-S6	
			under minimum leaving age	over minimum leaving age
Total Requests Received	10,956	7,984	2,570	402
Decisions at the initial stage				
Granted	8,413	6,410	1,683	320
Refused	1,798	1,182	577	39
Under consideration	149	58	78	13
Withdrawn	596	334	232	30
References to the appeal committee				
Received	419	381	38	-
Granted	112	103	9	-
Refused	207	186	21	-
Under consideration	2	1	1	-
Withdrawn	98	91	7	-
Appeals to Sheriff				
Received	2	2	-	-
Granted	-	-	-	-
Refused	-	-	-	-
Under consideration	-	-	-	-
Withdrawn	2	2	-	-
Total granted ⁽¹⁾				
Number	8,525	6,513	1,692	320
Percentage	77.8	81.6	65.8	79.6

(1) Granted at initial stage, appeal committee or appeal to Sheriff

**Table 5: Placing requests by outcome, special schools,
1 August 2003 to 31 July 2004**

	Total	Under school age	Under minimum leaving age	Over minimum leaving age
Total Requests Received	115	6	109	-
Decisions at the initial stage				
Granted	91	6	85	-
Refused	22	-	22	-
Under consideration	-	-	-	-
Withdrawn	2	-	2	-
References to the appeal committee				
Received	8	-	8	-
Granted	5	-	5	-
Refused	2	-	2	-
Under consideration	1	-	1	-
Withdrawn	-	-	-	-
Appeals to Sheriff				
Received	1	-	1	-
Granted	-	-	-	-
Refused	-	-	-	-
Under consideration	1	-	1	-
Withdrawn	-	-	-	-
Total granted ⁽¹⁾				
Number	96	6	90	-
Percentage	83.5	100.0	82.6	-

(1) Granted at initial stage, appeal committee or appeal to Sheriff

Table 6: Placing Requests Received and Granted⁽¹⁾, by sector and local authority, 2003/04

	Primary ⁽²⁾		Secondary		Special	
	Received	Granted	Received	Granted	Received	Granted
Scotland	20,005	18,144	10,956	8,525	115	96
Aberdeen City	732	681	453	295	-	-
Aberdeenshire	656	643	326	272	1	-
Angus	740	715	233	195	-	-
Argyll & Bute	293	279	21	16	-	-
Clackmannanshire	235	225	51	47	-	-
Dumfries & Galloway	699	675	400	400	-	-
Dundee City	619	551	385	277	-	-
East Ayrshire	303	269	82	55	2	1
East Dunbartonshire	519	449	557	371	2	1
East Lothian	225	212	114	81	-	-
East Renfrewshire	627	592	475	273	1	1
Edinburgh, City of	1,796	1,329	1,179	653	52	40
Eilean Siar	39	39	31	31	-	-
Falkirk	482	405	173	150	-	-
Fife	1,682	1,660	645	636	20	20
Glasgow City	2,712	2,504	1,852	1,457	19	18
Highland	346	320	194	179	-	-
Inverclyde	347	316	235	172	-	-
Midlothian	321	301	237	237	-	-
Moray	565	512	70	69	-	-
North Ayrshire	453	424	205	170	-	-
North Lanarkshire	1,041	961	525	479	9	6
Orkney Islands	21	21	2	2	-	-
Perth & Kinross	477	434	208	203	-	-
Renfrewshire	675	621	459	378	-	-
Scottish Borders	339	310	49	49	-	-
Shetland Islands	31	30	33	32	-	-
South Ayrshire	425	369	395	356	-	-
South Lanarkshire	1,329	1,214	506	361	-	-
Stirling	323	273	221	166	-	-
West Dunbartonshire	312	303	164	153	-	-
West Lothian	641	507	476	310	9	9

(1) Granted at initial stage, appeal committee or appeal to Sheriff

(2) Includes requests for early entry to primary school (pupils under statutory entry age)

Table 7: Placing requests received as a percentage of the relevant stage roll⁽¹⁾, primary and secondary schools, 1 August 2003 to 31 July 2004

	P1 requests as a % of P1 roll ⁽²⁾	P2-P7 requests as a % of P2-P7 roll	S1 requests as a % of S1 roll	S2-S6 requests as a % of S2-S6 roll
Scotland	23	2	13	1
Aberdeen City	25	2	17	1
Aberdeenshire	15	2	7	1
Angus	27	5	9	2
Argyll & Bute	16	2	-	-
Clackmannanshire	24	3	4	1
Dumfries & Galloway	23	3	13	2
Dundee City	27	2	17	1
East Ayrshire	13	1	3	1
East Dunbartonshire	35	1	31	1
East Lothian	12	1	6	1
East Renfrewshire	30	3	23	2
Edinburgh, City of	35	2	23	2
Eilean Siar	11	-	9	-
Falkirk	16	2	5	1
Fife	27	2	10	1
Glasgow City	31	2	21	3
Highland	9	1	5	-
Inverclyde	30	1	19	1
Midlothian	23	2	19	1
Moray	32	3	5	-
North Ayrshire	17	2	10	-
North Lanarkshire	20	1	10	1
Orkney Islands	4	1	-	-
Perth & Kinross	20	2	11	1
Renfrewshire	24	1	16	1
Scottish Borders	16	2	3	-
Shetland Islands	5	1	6	1
South Ayrshire	25	2	24	1
South Lanarkshire	27	2	9	1
Stirling	16	3	14	1
West Dunbartonshire	22	1	11	-
West Lothian	18	2	11	3

(1) Percentages are based on September 2003 stage rolls

(2) Excluding 'Under Statutory Entry Age' requests.

Table 8: Placing requests refused⁽¹⁾, by reason for refusal and sector, 1 August 2003 to 31 July 2004

Reason for refusal	Total	Primary			Secondary		Under school age	Special Under minimum leaving age	Over minimum leaving age
		Under statutory entry age	Other primary P1	P2-P7	S1	S2-S6			
Total	3,007	121	772	294					
Staffing constraints	520	-	153	75	148	144	-	-	-
Accommodation constraints	1,766	29	487	143	777	318	-	12	-
Effect on school discipline	42	-	23	-	1	14	-	4	-
Educational well-being of pupils already at the school	130	-	22	15	79	14	-	-	-
Continuity of the child's education	212	1	2	31	72	106	-	-	-
Age, ability or aptitude of the child	88	84	1	-	-	1	-	2	-
Child already required to discontinue at specified school	-	-	-	-	-	-	-	-	-
Specified school is a special school and the child does not have special educational needs	4	-	-	-	-	-	-	4	-
Specified school is a single sex school and the child is not of the sex admitted to the school	-	-	-	-	-	-	-	-	-
Place retained for children moving into the catchment area	217	-	65	28	105	19	-	-	-
Accepting the request would make it necessary for the Council to create an additional class or employ an additional teacher at a future stage of the child's primary education	21	-	19	2	-	-	-	-	-
Under section 38(1) of Standards in Scotland's Schools etc. Act 2000, education normally provided would not be suited to ability and aptitude of child	7	7	-	-	-	-	-	-	-

(1) Refused at initial stage. Includes some which were then granted on appeal

Table 9: Percentage of placing requests refused⁽¹⁾, by reason for refusal, primary, secondary and special schools, 1 August 2003 to 31 July 2004 (percentages)

	Total	Primary			Secondary		Special		
		Under statutory entry age	Other primary P1	P2-P7	S1	S2-S6	Under school age	Under minimum leaving age	Over minimum leaving age
Staffing constraints	17.3	-	19.8	25.5	12.5	23.4	-	-	-
Accommodation constraints	58.8	24.0	63.1	48.6	65.7	51.6	-	63.2	-
Effect on school discipline	1.4	-	3.0	-	0.1	2.3	-	21.1	-
Educational well-being of pupils already at the school	4.3	-	2.8	5.1	6.7	2.3	-	-	-
Continuity of the child's education	7.1	0.8	0.3	10.5	6.1	17.2	-	-	-
Age, ability or aptitude of the child	2.9	69.4	0.1	-	-	0.2	-	10.5	-
Child already required to discontinue at specified school	-	-	-	-	-	-	-	-	-
Specified school is a special school and the child does not have special educational needs	0.1	-	-	-	-	-	-	18.2	-
Specified school is a single sex school and the child is not of the sex admitted to the school	-	-	-	-	-	-	-	-	-
Place retained for children moving into the catchment area	7.2	-	8.4	9.5	8.9	3.1	-	-	-
Accepting the request would make it necessary for the Council to create an additional class or employ an additional teacher at a future stage of the child's primary education	0.7	-	2.5	0.7	-	-	-	-	-
Under section 38(1) of Standards in Scotland's Schools etc. Act 2000, education normally provided would not be suited to ability and aptitude of child	0.2	5.8	-	-	-	-	-	-	-

(1) Refused at initial stage. Includes some which were then granted on appeal

Table 10: Percentage of placing requests refused⁽¹⁾, by reason for refusal and sector, 1997/98 to 2003/04

Reason for refusal	Percentage						
	97/98	98/99	99/00	00/01	01/02	02/03	03/04
Staffing constraints	9.9	13.6	11.5	8.7	15.3	20.9	17.3
Accommodation constraints	61.3	60.9	72.6	79.0	70.0	62.4	58.8
Effect on school discipline	1.5	0.9	1.1	0.3	0.6	0.5	1.4
Educational well-being of pupils already at the school	6.6	7.8	5.6	2.5	2.2	3.3	4.3
Continuity of the child's education	9.5	7.7	3.1	2.4	2.3	2.0	7.1
Age, ability or aptitude of the child	9.9	8.6	5.5	3.2	2.8	1.7	2.9
Child already required to discontinue at specified school	-	-	-	0.1	-	-	-
Specified school is a special school and the child does not have special educational needs	-	-	-	-	0.2	-	0.1
Specified school is a single sex school and the child is not of the sex admitted to the school	-	-	-	0.3	-	0.1	-
Place retained for children moving into the catchment area	1.3	0.5	0.7	2.8	5.1	7.3	7.2
Accepting the request would make it necessary for the Council to create an additional class or employ an additional teacher at a future stage of the child's primary education ⁽²⁾	n/a	n/a	n/a	0.1	1.5	1.6	0.7
Under section 38(1) of Standards in Scotland's Schools etc. Act 2000, education normally provided would not be suited to ability and aptitude of child ⁽²⁾	n/a	n/a	n/a	0.6	-	0.2	0.2

(1) Refused at initial stage. Includes some which were then granted on appeal

(2) Additional reasons included in survey from 2000/01 onwards

**Table 11: Requests for deferred entry to P1,
(5th birthday Sept 2003 to Feb 2004 - wishing to defer to August 2004)
received 1st August 2003 to 31st July 2004**

	2002/03		2003/04	
	Primary	Special	Primary	Special
Scotland	2,337	82	3,209	78
Aberdeen City	218	4	222	2
Aberdeenshire	-	-	420	15
Angus	-	-	108	8
Argyll & Bute	53	-	47	-
Clackmannanshire	2	-	23	15
Dumfries & Galloway	-	-	118	-
Dundee City	185	-	218	-
East Ayrshire	43	-	35	-
East Dunbartonshire	87	-	80	-
East Lothian	71	-	119	-
East Renfrewshire	22	-	62	3
Edinburgh, City of	495	-	464	-
Eilean Siar	-	-	28	-
Falkirk	64	-	65	-
Fife	96	-	11	-
Glasgow City	61	-	55	-
Highland	-	-	5	-
Inverclyde	33	-	37	-
Midlothian	71	-	77	-
Moray	2	-	9	-
North Ayrshire	41	10	42	-
North Lanarkshire	75	4	120	26
Orkney Islands	44	-	40	-
Perth & Kinross	124	-	191	-
Renfrewshire	88	-	97	-
Scottish Borders	86	26	86	-
Shetland Islands	-	-	-	-
South Ayrshire	43	-	44	-
South Lanarkshire	87	32	141	9
Stirling	36	6	59	-
West Dunbartonshire	56	-	19	-
West Lothian	154	-	167	-