

Self-directed Support (Direct Payments), Scotland, 2008



Published: 28 October 2008
ISBN: 978-0-7559-7288-3

1. Introduction and key points

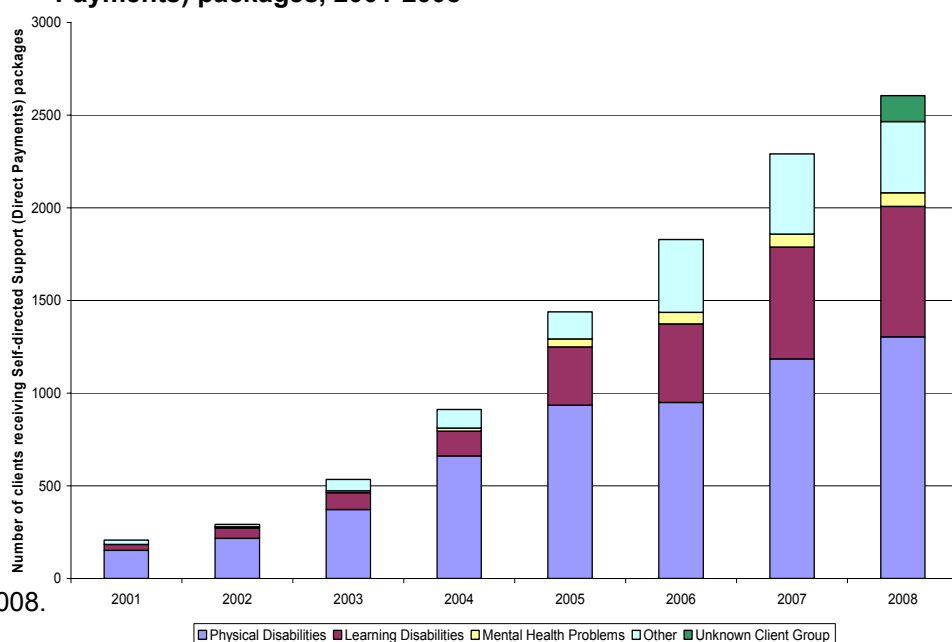
This Statistics Release presents the latest figures for Self-directed Support (Direct Payments). The latest figures apply to payments made during the period 1st April 2007 to 31st March 2008 under section 12B of the Social Work (Scotland) Act 1968. People who receive Self-directed Support (Direct Payments) are able to purchase and manage for themselves some or all of the care they have been assessed as needing. They are one way of increasing the flexibility, choice, and control people have over the care they receive, so that they can live more independently in their communities. A client may have more than one payment during the year.

Self-directed Support (Direct Payments) have been available to disabled people aged 18-64 since April 1997, and to disabled people aged 65 and over since July 2000. Since 21 December 2001 they have also been available to disabled 16 and 17 year olds and disabled parents for children's services. From 1 June 2003 it became a duty for local authorities to offer direct payments in place of providing services to all eligible disabled people aged 16 and over and to parents (or those with parental responsibility) for disabled children aged 15 and under.

The information is derived from returns made to the Scottish Government by Scottish Local Authorities. The background information note in section 4 conveys further details relating to the collection of Self-directed Support (Direct Payments) data. Figures may not sum due to incomplete data.

Chart 1: Number of people receiving Self-directed Support (Direct Payments) packages, 2001-2008

- The number of people in receipt of Self-directed Support (Direct Payments) has increased from 207 in 2001 to 2605 in the year to 31st March 2008.
- 50% of the people receiving Self-directed Support (Direct Payments) in 2008 had a physical disability. 25% of people who received Self-directed Support (Direct Payments) were aged 65 or over, compared to only 7 per cent in 2001.
- The value of payments has increased by almost £27.3 million, from £2.1 million in 2001 to around £29.4 million in 2008.



2. Scotland Analysis

Figures behind the charts are available in the annex.

- Across Scotland 2605 people received Self-directed Support (Direct Payments) in the year 2007/08, an increase of almost 314 (14 per cent) from the 2006/07 level.
- Half (50%) of these 2605 people received Self-directed Support (Direct Payments) due to a physical disability. The number of people in this client group, has risen from 1185 in 2006/07 to 1304 in 2007/08. 27 per cent of those receiving Self-directed Support (Direct Payments) in 2007/08 were due to a learning disability.

Chart 2: Number of people receiving Self-directed Support (Direct payments) packages by client group and age, 2008

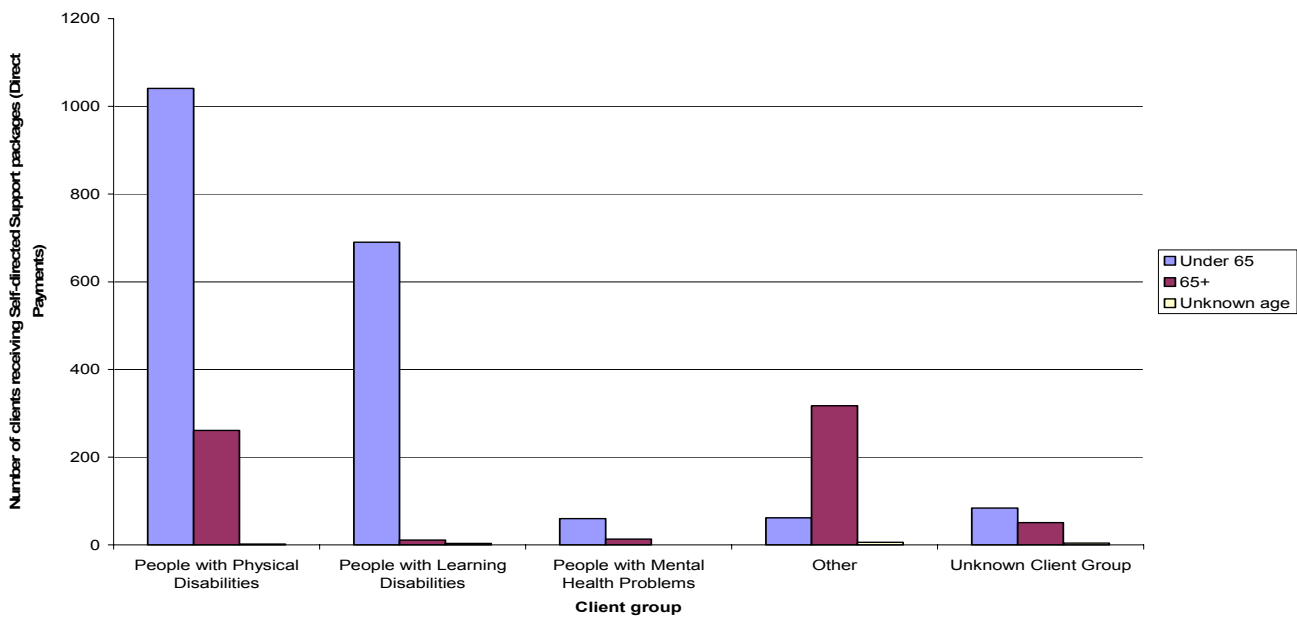
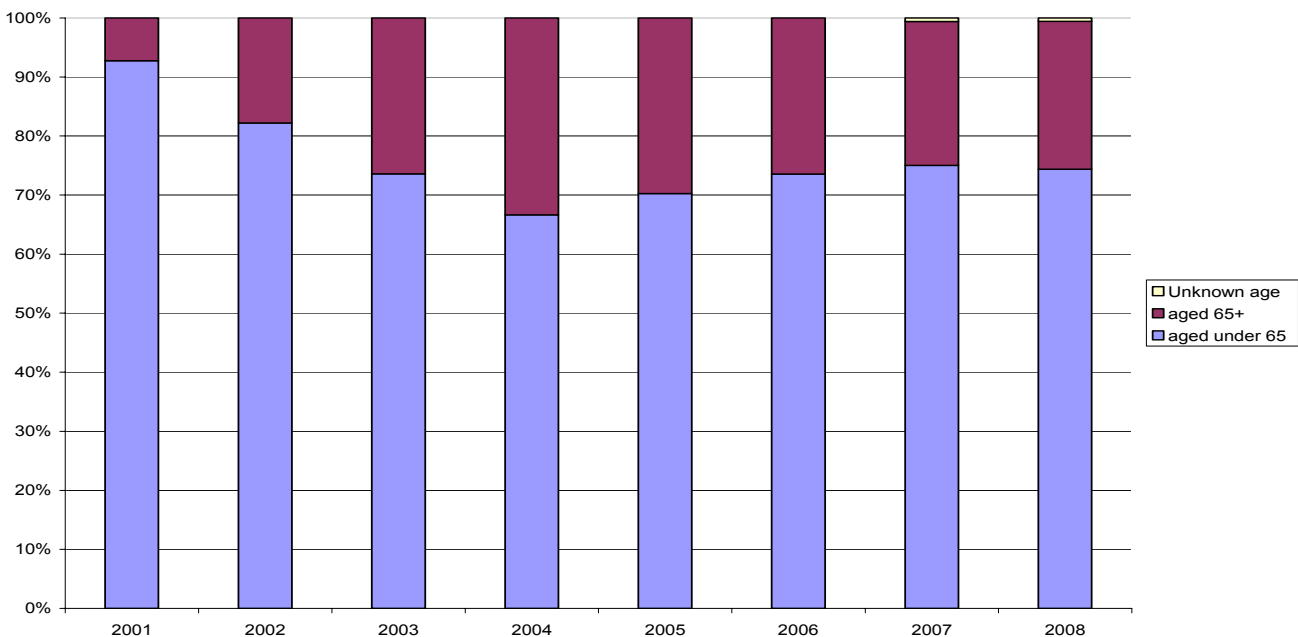
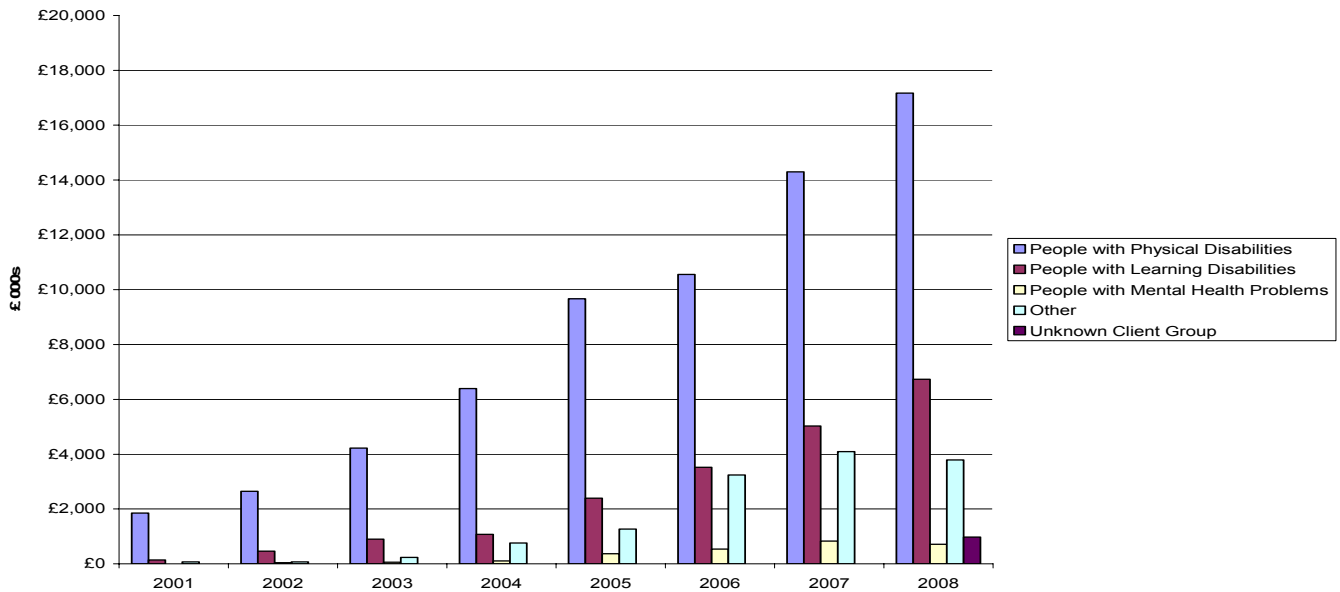


Chart 3: Percentage of people receiving Self-directed Support (Direct Payments) packages by age, 2001-2008



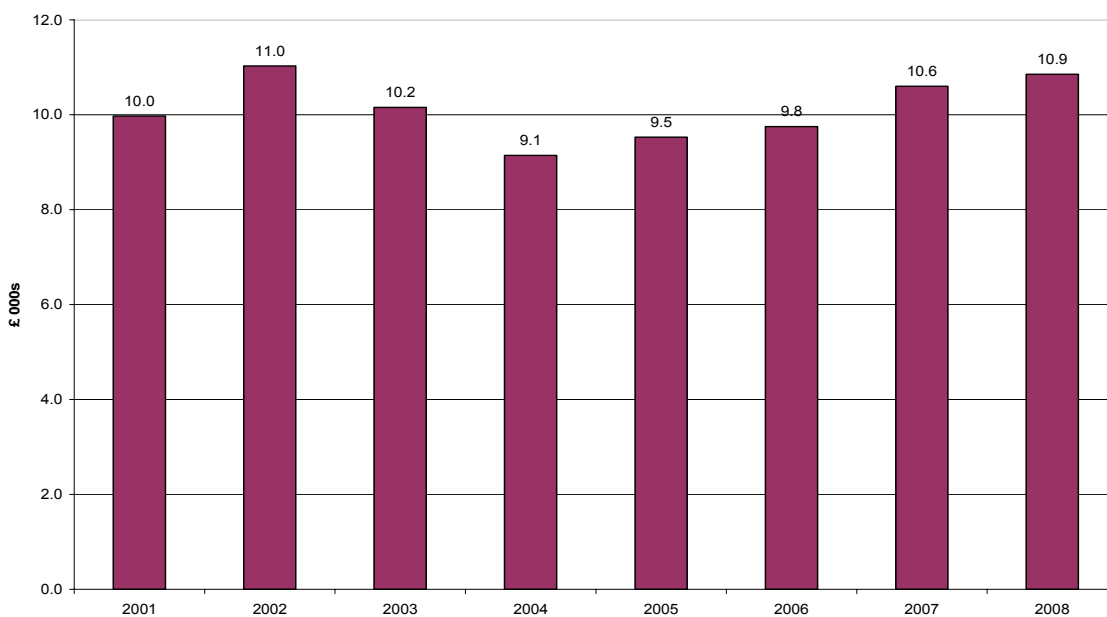
- The age profile of Self-directed Support (Direct Payment) clients has changed since 2001, with a greater proportion of recipients now aged 65 or over. In 2001 only 7 per cent of recipients were in this age group, compared to 25 per cent of clients in 2008. This proportion has, however, fallen from a high of 33 per cent in 2004.
- In the year to 31 March 2008, 1937 payments (74% of the total) were made to people aged under 65.
- There were slightly more females than males in receipt of Self-directed Support (Direct Payments) in 2008, 52% compared to 47%.

Chart 4: Value of Self-directed Support (Direct Payments) packages, 2001-2008



- The total value of direct payments has steadily increased from 2001, and £29.4 million was spent in the year to 31 March 2008. Most of this, around £17.2 million, was spent on people with physical disabilities (58 per cent).

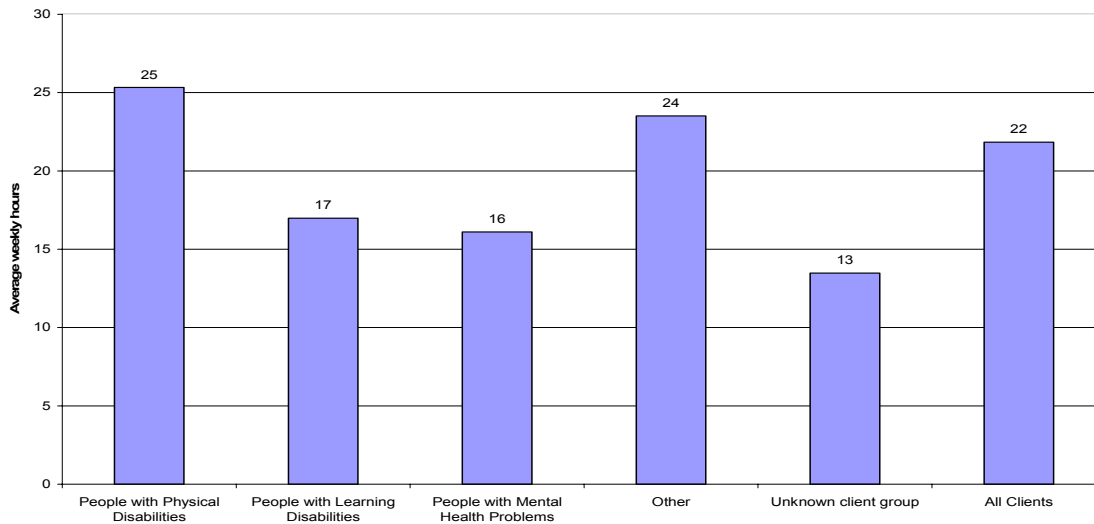
Chart 5: Average estimated value of a Self-directed Support (Direct Payments) package, 2001-2008



- The average value of Self-directed Support (Direct Payment) has increased slightly for the fourth year running, after a decrease in the two preceding years, and stands at approximately £11,000 (based on a previous methodology to allow comparisons back to 2001, see background notes for further details).

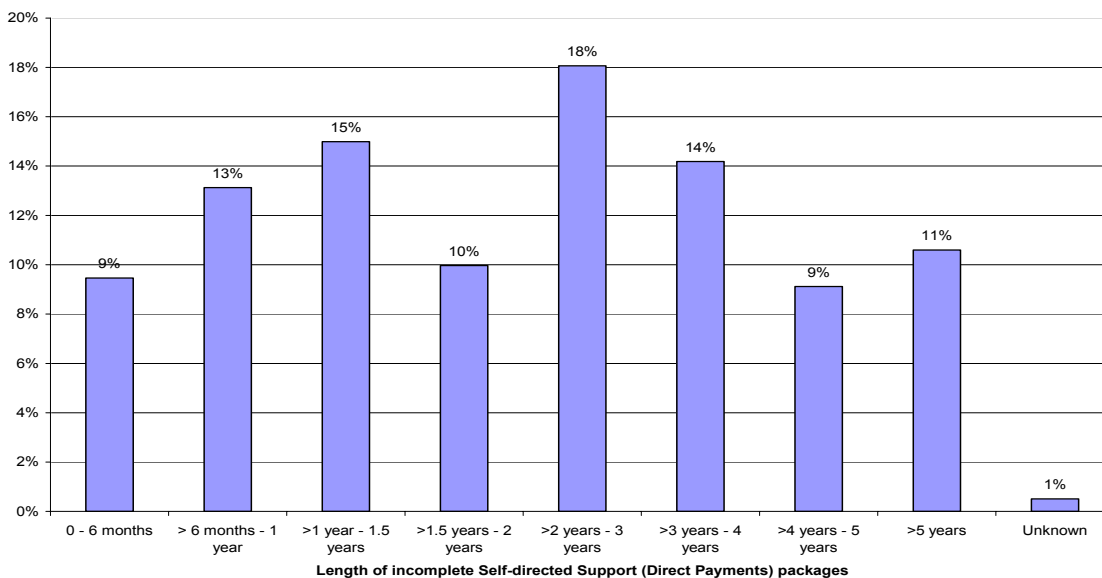
The estimated average values in chart 5 are simply calculated by dividing the total value of direct payments for the year by the number of people who received direct payments during the year. From 2006, we collected direct payment information individually for each client and this allows us to make a more accurate measurement of the average cost, by taking into account the length of time each client received payments during the year, see table 2 in the annex for further information.

Chart 6: Average weekly hours in a Self-directed Support (Direct Payments) package - 2008



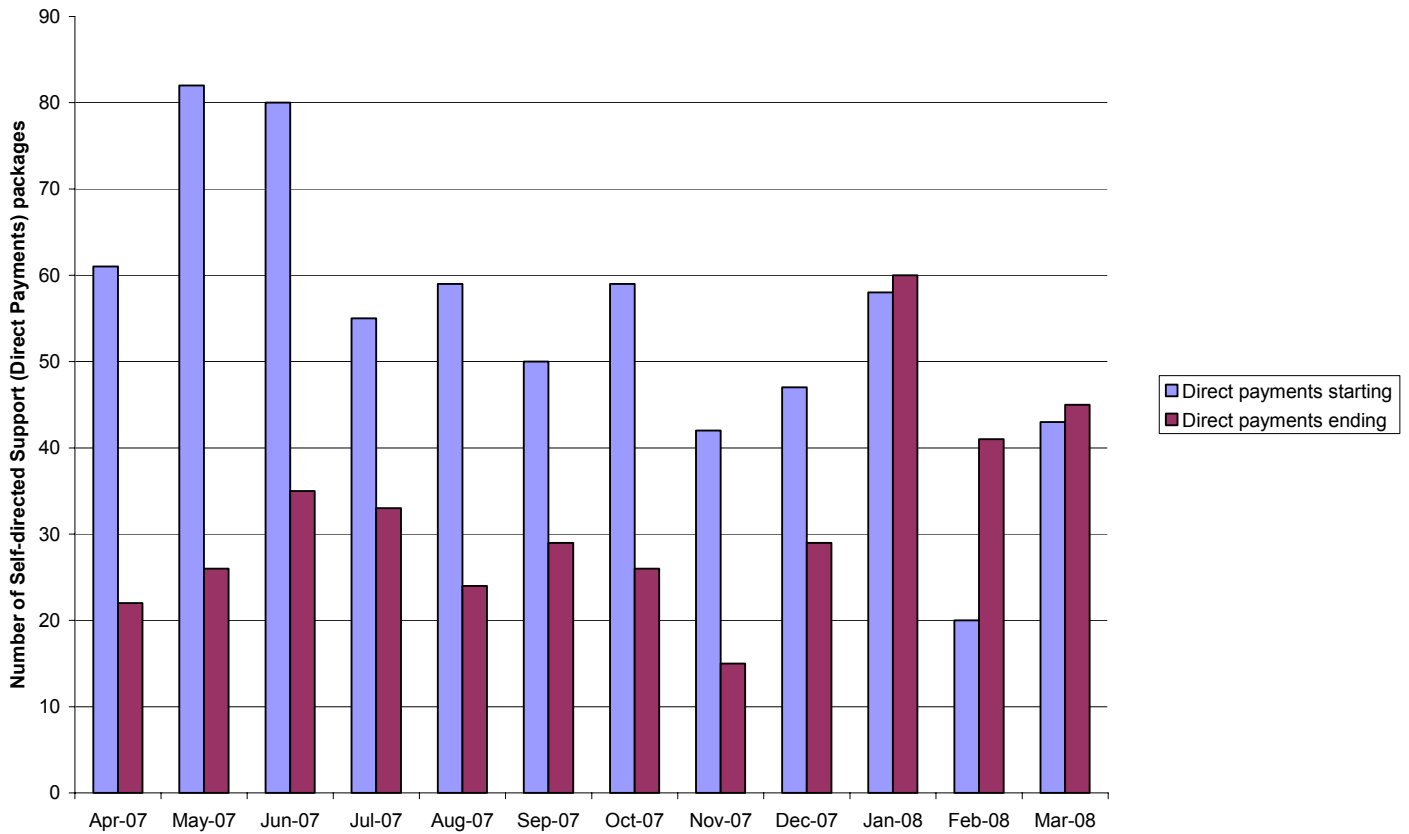
- On average there were 22 hours per week in a direct payment package in 2007/08. This varied slightly between client groups with an average of 16 hours per week in direct payment packages for people with mental health problems and 25 hours per week in those for people with physical disabilities.

Chart 7: Distribution of length of Self-directed Support (Direct Payments) packages, 2008



- Of the direct payments which were ongoing on 31 March 2008, 23 per cent had been in place for a year or less. A further 25 per cent had been going for over 1 year but less than 2 years and 11 per cent of payments had been in place for over 5 years.

Chart 8: Self-directed Support (Direct Payments) packages starting and ending in 2007/08 by month



The above chart displays the month in which new Self-directed Support (Direct Payments) packages began and finished. 25 per cent began between May and June 2007. 16 per cent of those packages that ended did so in January 2008.

3. Local Authority Analysis

- All Local Authorities made payments for packages of Self-directed Support (Direct Payments) during the year to 31 March 2008.
- Fife council had the most number of people receiving Self-directed Support (Direct payments) packages. (13 per cent of the Scotland total). Fife's payments amounted to £3.3 million. However the city of Edinburgh contributed the greatest value overall, at over £4.4 million (15 per cent of the total amount paid). Eilean Siar had the smallest number of clients with 11 people receiving payments.
- All but 4 Local Authorities had more people receiving payments in 2008 than in the previous year.
- The average value of a payment increased in 17 of 32 Local Authorities since 2006/07.

Further Local Authority analysis can be found in the annex.

Chart 9: Number of people receiving Self-directed Support (Direct Payments) packages, 2008

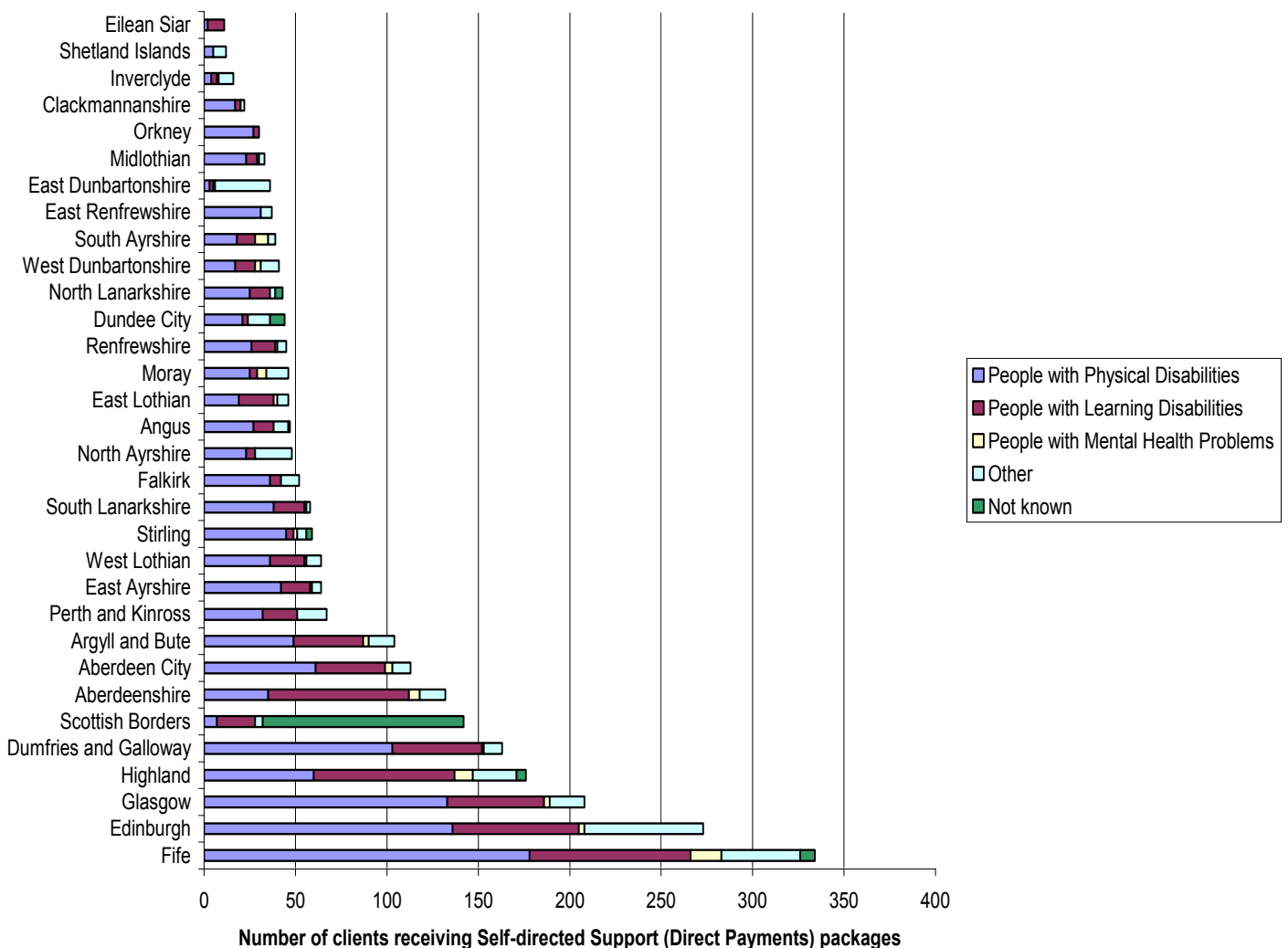
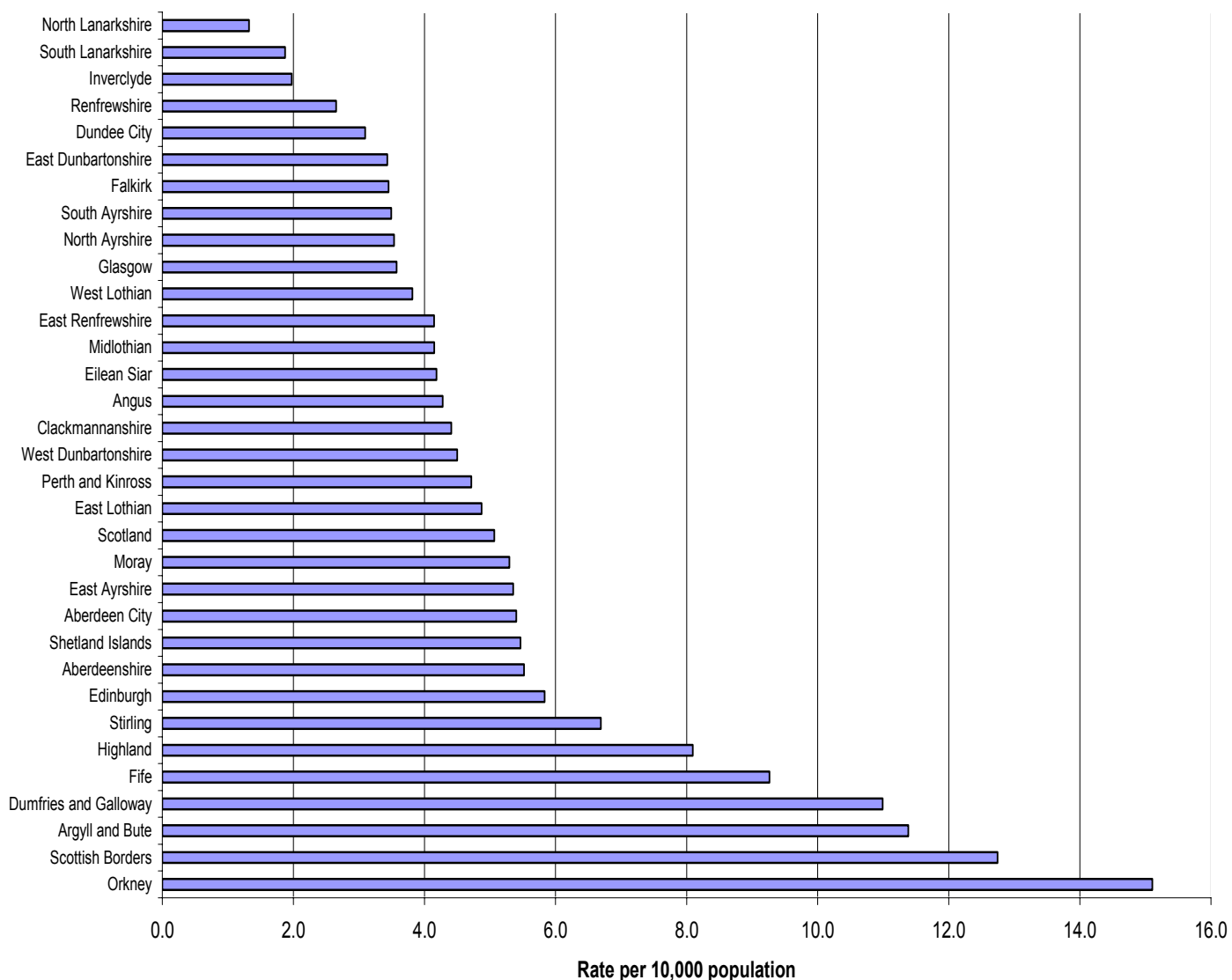


Chart 10: Rates of clients receiving Self-directed Support (Direct Payments) packages per 10,000 population, 2008



4. Background information on the collection of the data

The Self-directed Support (Direct Payments) survey began in 2001 and collects information on Direct Payments from all Local Authorities in Scotland.

The format of the survey was changed in 2006 to a person based return. This may have resulted in some inconsistency compared to previous years. The new survey asks for gender, date of birth, client group, value of direct payment throughout the year, weekly hours in the direct payment package, type of direct payment provision and type of care delivery along with a number of other variables.

The new form has allowed for more accurate calculation of average direct payment values. These are calculated by determining for how many days each person received a direct payment in 2007/08. The value of the direct payment is then divided by this number of days and the result is multiplied by the number of days in the year to estimate the value of a direct payment if the had client received it throughout the entire year. This can then be averaged to allow more accurate comparisons between, for example, client groups.

This publication contains average direct payment values calculated using both methods to allow for the continuation of existing time series.

All 32 local authorities provided information. However, a number of Local Authorities had difficulty providing some of the data.

Some column totals in the tables in this document may not exactly equal the sum of their component parts due to the effects of rounding.

Further information

Further details and analysis of the data presented in this Statistics Release are available on request from the address given below. The Statistics Release is available on the Internet by accessing the Scottish Government web site: –

<http://www.scotland.gov.uk/Topics/Statistics/Browse/Health/Publications>

Information at local authority level is shown in the annex to this Statistics Release.

Community Care Statistics
Basement Rear
St Andrews House
Edinburgh
EH1 3DG

Contact: Steven Gillespie
Tel: 0131 244 3777
E-mail: SWStat@scotland.gov.uk

This statistics release was published on 28th October 2008.

5. Annex

The Annex provides further detailed analysis.

Table 1:	Number of clients receiving Self-directed Support (Direct Payment) packages by Local Authority, 2001-2008
Table 2:	Number of clients receiving Self-directed Support (Direct Payment) packages by client group and Local Authority, 2008
Table 3:	Value of Self-directed Support (Direct Payment) packages by Local Authority, 2001-2008
Table 4:	Average value of Self-directed Support (Direct Payment) packages by Local Authority, 2001-2008
Table 5:	Age profile of clients who receive Self-directed Support (Direct Payment) packages, 2001-2008
Table 6:	Number of clients who receive Self-directed Support (Direct Payment) packages by age and client group, 2008
Table 7:	Value of Self-directed Support (Direct Payment) packages by age and client group, 2008
Table 8:	Average estimated value of Self-directed Support (Direct Payment) packages by client group, 2001-2008
Table 9:	Average weekly hours in Self-directed Support (Direct Payment) packages by age and client group, 2008
Table 10:	Number of new and finalised Self-directed Support (Direct Payment) packages by Local Authority, 2008
Table 11:	Type of Self-directed Support (Direct Payment) provision, 2008
Table 12:	Type of care delivery, 2008

Note that Scotland totals may not equal the sum of the individual local authority figures because of rounding.

Table 1: Number of clients receiving Self-directed Support (Direct Payment) packages by Local Authority, 2001-2008

	Number of clients							
	2001	2002	2003	2004	2005	2006	2007	2008
Aberdeen City	4	4	11	40	46	56	101	113
Aberdeenshire	8	6	11	19	43	64	101	132
Angus	4	23	30	32	31	37	40	47
Argyll and Bute	0	0	0	29	62	79	89	104
Clackmannanshire	1	4	18	23	30	31	32	22
Dumfries and Galloway	7	25	27	39	74	116	141	163
Dundee City	0	0	0	9	20	33	38	44
East Ayrshire	0	0	17	25	36	36	51	64
East Dunbartonshire	0	0	0	1	13	21	23	36
East Lothian	5	7	7	13	19	28	31	46
East Renfrewshire	0	0	0	2	11	15	15	37
Edinburgh	67	49	89	120	142	152	209	273
Eilean Siar	0	3	5	4	7	5	8	11
Falkirk	0	0	0	19	40	58	61	52
Fife	30	64	120	190	213	262	309	334
Glasgow	17	16	15	26	102	124	193	208
Highland	14	23	43	55	126	194	225	176
Inverclyde	0	0	0	0	3	6	9	16
Midlothian	0	0	0	4	20	25	29	33
Moray	0	5	7	17	28	32	43	46
North Ayrshire	0	0	0	19	23	32	47	48
North Lanarkshire	3	10	11	18	24	24	37	43
Orkney	0	0	1	16	40	46	45	30
Perth and Kinross	4	4	19	20	25	31	40	67
Renfrewshire	3	3	3	7	14	23	32	45
Scottish Borders	12	20	50	87	103	105	117	142
Shetland Islands	0	0	0	4	5	10	11	12
South Ayrshire	22	18	31	32	34	41	39	39
South Lanarkshire	0	0	0	4	18	30	46	58
Stirling	0	0	0	8	25	37	37	59
West Dunbartonshire	0	0	0	13	27	29	31	41
West Lothian	6	8	19	17	34	47	61	64
Scotland	207	292	534	912	1,438	1,829	2,291	2,605

Source: Self-directed Support (Direct Payments) Survey, Scottish Government

Table 2: Number of clients receiving Self-directed Support (Direct Payment) packages by client group and Local Authority, 2008

	People with Physical Disabilities	People with Learning Disabilities	People with Mental Health Problems	Other	Not known	All	Rate per 10,000 population
Aberdeen City	61	38	-	10	-	113	5.4
Aberdeenshire	35	77	6	14	-	132	5.5
Angus	27	11	-	8	-	47	4.3
Argyll and Bute	49	38	-	14	-	104	11.4
Clackmannanshire	17	-	-	-	-	22	4.4
Dumfries and Galloway	103	49	-	10	-	163	11.0
Dundee City	21	-	-	12	8	44	3.1
East Ayrshire	42	16	-	5	-	64	5.4
East Dunbartonshire	-	-	-	30	-	36	3.4
East Lothian	19	19	-	6	-	46	4.9
East Renfrewshire	31	-	-	6	-	37	4.1
Edinburgh	136	69	-	65	-	273	5.8
Eilean Siar	-	9	-	-	-	11	4.2
Falkirk	36	6	-	10	-	52	3.5
Fife	178	88	17	43	8	334	9.3
Glasgow	133	53	-	19	-	208	3.6
Highland	60	77	10	24	5	176	8.1
Inverclyde	-	-	-	8	-	16	2.0
Midlothian	23	6	-	-	-	33	4.2
Moray	25	-	5	12	-	46	5.3
North Ayrshire	23	5	-	20	-	48	3.5
North Lanarkshire	25	11	-	-	-	43	1.3
Orkney	27	-	-	-	-	30	15.1
Perth and Kinross	32	19	-	16	-	67	4.7
Renfrewshire	26	13	-	5	-	45	2.7
Scottish Borders	7	21	-	-	110	142	12.7
Shetland Islands	5	-	-	7	-	12	5.5
South Ayrshire	18	10	7	-	-	39	3.5
South Lanarkshire	38	17	-	-	-	58	1.9
Stirling	45	-	-	5	-	59	6.7
West Dunbartonshire	17	11	-	10	-	41	4.5
West Lothian	36	19	-	8	-	64	3.8
Scotland	1304	704	73	385	139	2605	5.1

Source: Self-directed Support (Direct Payments) Survey, Scottish Government

Note - cells with less than 5 have been marked with a '-' for disclosure purposes.

Table 3: Value of Self-directed Support (Direct Payment) packages by Local Authority, 2001-2008

	Value of Direct Payments (£000s)							
	2001	2002	2003	2004	2005	2006	2007	2008
Aberdeen City	17	23	42	194	427	517	878	1,031
Aberdeenshire	21	28	44	75	245	587	714	1,693
Angus	37	275	426	458	421	642	619	697
Argyll and Bute	0	0	0	170	737	1,031	1,326	1,458
Clackmannanshire	8	31	69	157	171	186	203	177
Dumfries and Galloway	47	84	234	320	442	993	1,380	1,590
Dundee City	0	0	0	59	166	351	408	466
East Ayrshire	0	0	118	334	405	446	568	752
East Dunbartonshire	0	0	0	10	135	275	302	394
East Lothian	83	103	117	191	354	438	750	812
East Renfrewshire	0	0	0	18	60	120	158	352
Edinburgh	1,083	1,177	1,864	1,979	2,498	2,524	3,652	4,386
Eilean Siar	0	7	13	4	18	12	22	21
Falkirk	0	0	0	105	219	416	487	570
Fife	254	554	822	1,501	2,066	2,053	2,799	3,277
Glasgow	100	151	147	185	711	1,409	2,290	3,148
Highland	67	174	447	619	1,064	1,212	1,539	1,383
Inverclyde	0	0	0	0	16	26	40	107
Midlothian	0	0	0	17	262	337	577	489
Moray	0	36	76	168	385	485	658	594
North Ayrshire	0	0	0	163	288	345	477	581
North Lanarkshire	13	156	177	264	300	350	431	753
Orkney	0	0	1	44	145	231	185	135
Perth and Kinross	44	53	166	218	219	382	497	702
Renfrewshire	28	28	28	52	139	178	270	498
Scottish Borders	47	125	226	397	634	700	1,051	915
Shetland Islands	0	0	0	63	76	132	172	136
South Ayrshire	168	155	251	392	492	510	487	547
South Lanarkshire	0	0	0	17	75	202	357	488
Stirling	0	0	0	30	139	228	295	320
West Dunbartonshire	0	0	0	41	187	268	296	417
West Lothian	47	59	156	92	207	276	367	497
Scotland	2,064	3,220	5,422	8,338	13,701	17,862	24,255	29,383

Source: Self-directed Support (Direct Payments) Survey, Scottish Government

Table 4: Average value of Self-directed Support (Direct Payment) packages by Local Authority, 2001-2008

	2001	2002	2003	2004	2005	2006	2007	2008	
	Average Value (£,000)	Average Value (£,000)	Average Value (£,000)	Average Value (£,000)	Average Value (£,000)	Estimated Average Value (£,000)	Estimated Average Value (£,000)	Estimated Average Value1 (£,000)	Average value2 (£,000)
Aberdeen City	4.3	5.7	3.8	4.8	9.3	9.2	8.7	9.1	11.1
Aberdeenshire	2.6	4.6	4.0	3.9	5.7	9.2	7.1	6.5	16.1
Angus	9.1	12.0	14.2	14.3	13.6	17.8	15.5	14.8	16.7
Argyll and Bute	0.0	0.0	0.0	5.9	11.9	13.1	14.9	14.0	17.0
Clackmannanshire	7.9	7.7	3.8	6.8	5.7	6.0	6.3	8.1	8.9
Dumfries and Galloway	6.7	3.4	8.7	8.2	6.0	8.6	9.8	10.1	11.3
Dundee City	0.0	0.0	0.0	6.6	8.3	10.6	10.7	10.6	12.3
East Ayrshire	0.0	0.0	6.9	13.4	11.3	12.1	11.1	11.6	13.9
East Dunbartonshire	0.0	0.0	0.0	9.9	10.4	13.1	13.1	11.3	14.0
East Lothian	16.6	14.7	16.7	14.7	18.6	15.7	24.2	17.7	26.3
East Renfrewshire	0.0	0.0	0.0	9.1	5.5	8.0	n/a	9.3	12.2
Edinburgh	16.2	24.0	20.9	16.5	17.6	16.5	17.5	15.5	20.0
Eilean Siar	0.0	2.2	2.5	1.0	2.6	2.4	2.7	1.9	2.5
Falkirk	0.0	0.0	0.0	5.5	5.5	7.2	8.0	11.0	12.5
Fife	8.5	8.7	6.8	7.9	9.7	7.8	9.1	9.8	11.2
Glasgow	5.9	9.4	9.8	7.1	7.0	11.4	11.9	15.1	18.0
Highland	4.8	7.6	10.4	11.2	8.4	6.2	6.8	8.0	10.6
Inverclyde	0.0	0.0	0.0	0.0	5.2	4.4	4.4	6.7	8.6
Midlothian	0.0	0.0	0.0	4.3	13.1	13.5	19.9	14.4	17.0
Moray	0.0	7.2	10.8	9.9	13.8	16.7	15.3	13.2	16.4
North Ayrshire	0.0	0.0	0.0	8.6	12.5	10.8	10.2	12.6	14.8
North Lanarkshire	4.3	15.6	16.1	14.7	12.5	14.6	11.6	17.9	57.8
Orkney	0.0	0.0	1.0	2.8	3.6	5.0	4.1	4.5	4.5
Perth and Kinross	11.0	13.3	8.7	10.9	8.7	12.3	12.4	10.5	33.6
Renfrewshire	9.3	9.3	9.3	7.5	9.9	7.8	8.4	11.1	13.6
Scottish Borders	4.0	6.2	4.5	4.6	6.2	6.7	9.0	6.4	8.4
Shetland Islands	0.0	0.0	0.0	15.7	15.2	8.8	15.6	12.4	14.1
South Ayrshire	7.6	8.6	8.1	12.3	14.5	12.4	12.5	14.0	15.5
South Lanarkshire	0.0	0.0	0.0	4.2	4.2	6.7	7.8	8.4	9.7
Stirling	0.0	0.0	0.0	3.7	5.5	6.2	8.0	6.7	9.9
West Dunbartonshire	0.0	0.0	0.0	3.1	6.9	9.2	9.6	10.2	17.9
West Lothian	7.9	7.4	8.2	5.4	6.1	5.9	6.0	7.8	9.1
Scotland	10.0	11.0	10.2	9.1	9.5	9.8	10.6	10.8	14.9

Source: Self-directed Support (Direct Payments) Survey, Scottish Government

Note – see background notes for further information on average methodology.

Table 5: Age profile of clients who receive Self-directed Support (Direct Payment) packages, 2001-2008

Age Group	Number of clients							
	2001	2002	2003	2004	2005	2006	2007	2008
aged under 65	192	240	393	606	1010	1345	1719	1937
aged 65+	15	52	141	306	428	484	558	653
Unknown age	0	0	0	0	0	0	14	15
Total	207	292	534	912	1438	1829	2291	2605

Source: Self-directed Support (Direct Payments) Survey, Scottish Government

Table 6: Number of clients who receive Self-directed Support (Direct Payment) packages by age and client group, 2008

	Number of Clients							All Ages
	0-17	18-34	35-49	50-64	65+	Age unknown		
People with Physical Disabilities	155	202	316	368	261	2	1304	
People with Learning Disabilities	239	328	90	33	11	3	704	
People with Mental Health Problems	13	18	12	17	13	0	73	
Other	31	13	9	9	317	6	385	
Unknown client group	20	14	23	27	51	4	139	
Total	458	575	450	454	653	15	2605	

Source: Self-directed Support (Direct Payments) Survey, Scottish Government

Table 7: Value of Self-directed Support (Direct Payment) packages by age and client group, 2008

	Value of Direct Payments (£000s)							
	0-15	16-17	18-34	35-49	50-64	65+	Age unknown	All Ages
People with Physical Disabilities	733	105	3,167	5,600	5,063	2,486	14	17,166
People with Learning Disabilities	1,005	289	3,427	1,210	598	166	41	6,736
People with Mental Health Problems	75	7	183	118	156	176	0	715
Other	130	14	238	76	142	3,069	124	3,792
Unknown client group	73	11	77	164	198	408	43	974
Total	2,016	425	7,092	7,167	6,157	6,305	221	29,383

Source: Self-directed Support (Direct Payments) Survey, Scottish Government

Table 8: Average estimated value of Self-directed Support (Direct Payment) packages by client group, 2001-2008

	Average (£'000s)								
	2001	2002	2003	2004	2005	2006	2007	2008	
People with Physical Disabilities	12.2	12.2	11.4	9.7	10.3	11.1	12.2	13.0	
People with Learning Disabilities	4.4	8.3	9.9	8.0	7.6	8.3	8.3	8.7	
People with Mental Health Problems	0.0	6.7	6.0	6.8	8.5	8.7	12.0	8.7	
Other	3.2	5.4	3.8	7.6	8.7	8.2	9.4	9.8	
Unknown client group	0.0	0.0	0.0	0.0	0.0	0.0	0.0	6.9	
All clients	10.0	11.0	10.2	9.1	9.5	9.8	10.6	10.9	

Source: Self-directed Support (Direct Payments) Survey, Scottish Government

Table 9: Average weekly hours in Self-directed Support (Direct Payment) packages by age and client group, 2008

	Age Group							All Ages
	Less than 15	16-17	18-34	35-49	50-64	65+	Unknown age	
People with Physical Disabilities	9	9	26	31	27	25	2	25
People with Learning Disabilities	7	10	19	29	34	38	38	17
People with Mental Health Problems	9	15	15	18	20	21	0	16
Other	10	4	52	18	31	23	44	24
Unknown client group	5	3	5	17	15	17	0	13
All Clients	8	8	22	29	26	24	27	22

Source: Self-directed Support (Direct Payments) Survey, Scottish Government

Table 10: Number of new and finalised Self-directed Support (Direct Payment) packages by Local Authority, 2008

	Self-directed Support (Direct Payments) packages on 01-Apr-07	Self-directed Support (Direct payments) packages which began between 01-Apr-07 and 31-03-08	Self-directed Support (Direct Payments) packages which ended between 01-Apr-07 and 31-03-08	Packages of Self-directed Support (Direct Payments) on 31-Mar-08
Aberdeen City	92	21	9	103
Aberdeenshire	114	147	107	149
Angus	40	7	2	45
Argyll & Bute	85	19	11	86
Clackmannanshire	20	2	3	18
Dumfries & Galloway	126	37	9	153
Dundee City	33	11	1	43
East Ayrshire	46	19	10	52
East Dunbartonshire	29	7	3	32
East Lothian	32	14	8	38
East Renfrewshire	23	15	5	33
Edinburgh, City of	237	46	4	274
Eilean Siar	9	2	2	9
Falkirk	49	3	11	41
Fife	291	45	31	299
Glasgow City	171	37	16	190
Highland	137	44	21	152
Inverclyde	9	7	3	13
Midlothian	26	8	2	32
Moray	38	8	11	33
North Ayrshire	42	6	4	42
North Lanarkshire	36	7	2	37
Orkney Islands	29	1	2	28
Perth & Kinross	40	27	10	57
Renfrewshire	26	19		45
Scottish Borders	105	37	8	131
Shetland Islands	10	2	1	11
South Ayrshire	35	4	6	33
South Lanarkshire	47	11	5	53
Stirling	43	16	12	45
West Dunbartonshire	25	16	5	36
West Lothian	53	11	8	56
Scotland	2098	656	332	2369

Source: Self-directed Support (Direct Payments) Survey, Scottish Government

Figures may not sum due to incomplete data

Table 11: Type of Self-directed Support (Direct Payment) provision, 2008

Type of DP provision	Packages of Self-directed Support (Direct Payments)	% of all packages of Self-directed Support (Direct Payments)
Personal Care	1614	59%
Health Care	141	5%
Domestic Tasks	764	28%
Housing Support	188	7%
Social/educational/recreational activities	879	32%
Equipment and temporary adaptations	164	6%
Respite	434	16%
Other	72	3%

Source: Self-directed Support (Direct Payments) Survey, Scottish Government

Note that as more than one type of provision can apply to an individual client percentages do not add to 100.

Note figures will not sum due to missing data

Table 12: Type of care delivery, 2008

Type of Care Delivery	Self-directed Support (Direct Payments) packages	% of all Self-directed Support (Direct payments) packages
Personal assistant (PA) Contract	1352	49%
Service Provider	678	25%
Mixed	208	8%
Other	37	1%

Percentages are based on packages of Self-directed Support (Direct Payments). This data was not provided for every package of Self-directed Support (Direct Payments)

Source: Self-directed Support (Direct Payments) Survey, Scottish Government

SCOTTISH GOVERNMENT STATISTICIAN GROUP

OUR AIM

To provide relevant and reliable information, analysis and advice that meet the needs of government, business and the people of Scotland.

OBJECTIVES

1. To produce statistics and analysis relevant to user needs by
 - Developing our understanding of customer requirements to ensure statistics are kept relevant and analysis is well targeted;
 - Developing the range of statistics and analysis we produce;
 - Where practicable improving timeliness;
 - Providing more statistics disaggregated by age, gender and ethnicity;
 - Developing more data for small areas through the Neighbourhood Statistics project;
 - Contributing to production of comparable statistics across the UK and internationally.
2. To ensure effective use of our statistics by
 - Contributing more directly to policy processes inside and where possible outside government;
 - Improving access to and presentation of data and analysis;
 - Improving the advice provided on statistics.
3. To work effectively with users and providers by
 - Maintaining arrangements to consult and involve users and providers;
 - Involving users and providers in planning developments in outputs and processes;
 - Minimising the burden on data providers through dropping or streamlining collections as appropriate, to ensure the benefits of the information justify the costs of collection.
4. To develop the quality of statistics by
 - Assuring and improving quality as an integral part of data collection and analysis and through regular reviews in line with National Statistics quality strategy;
 - Developing statistical methods, systems and classifications;
 - Working with the rest of the Government Statistical Service to develop joint approaches/solutions where appropriate.
5. To assure the integrity of statistics by
 - Maintaining and promoting integrity through implementation of the National Statistics Code of Practice and related protocols;
 - Safeguarding the confidentiality of data subjects.
6. To ensure the efficient and effective delivery of statistics products and services by
 - Making best use of all sources including administrative sources;
 - Working with other analysts to maximise the contribution of our own and other analysts' work;
 - Ensuring value for money;
 - Making best use of Information and Communications Technology;
 - Ensuring effective communication within the Statistician Group.
7. To develop our workforce and competences
 - Ensuring recruitment of staff with the necessary skills and potential;
 - Ensuring development of expertise amongst existing staff;
 - Promoting and upholding the standards of the statistics profession.

This is a National Statistics publication

"This is a National Statistics publication. It has been produced to high professional standards set out in the National Statistics Code of Practice Protocol - see www.statistics.gov.uk/about_ns/cop/default.asp

These statistics undergo regular quality assurance reviews to ensure that they meet customer needs. They are produced free from any political interference."

Details of pre-release access will be provided in the Scottish Government Statistics Website under 'Forthcoming Releases'

Correspondence and enquiries

Enquiries on Free Personal and Nursing Care should be addressed to:

Steven Gillespie
Analytical Services Division
Health Directorate
St Andrews House
Edinburgh, EH1 3DG
Telephone: 0131 244 3777; Fax: 0131 244 5427
e-mail: Swstat@scotland.gsi.gov.uk

General enquiries on Scottish Government statistics can be addressed to:

Office of the Chief Statistician
Scottish Government
3 Floor West Rear, St Andrews House
EDINBURGH EH1 3DG
Telephone: (0131) 244 0442; Fax: (0131) 244 2223
e-mail: statistics.enquiries@scotland.gsi.gov.uk

Advice on specific areas of Scottish Government statistical work can be obtained from staff at the telephone numbers given below:

Scottish Government Statistics contacts

Agricultural census and labour force	(0131) 244 6150
Business	(0141) 242 5446
Community Care	(0131) 244 3777
Courts and law	(0131) 244 2227
Environment	(0131) 244 0445
Equality	(0131) 244 0324
Fisheries	(0131) 244 6441
Further and Higher Education	(0141) 242 0273
Health	(0131) 244 3432
Housing	(0131) 244 7236
Income, Tax and Benefits	(0131) 244 2583
Labour market	(0141) 242 5446
Local government finance	(0131) 244 7033
Planning	(0131) 244 0439
Prisons	(0131) 244 2147
Recorded crime	(0131) 244 2635
Schools – pupils and teachers	(0131) 244 1689
Schools – qualifications	(0131) 244 0315
Scottish Government personnel	(0131) 244 3926
Scottish Neighbourhood Statistics	(0131) 244 0442
The Economy	(0131) 244 2234
Transport	(0131) 244 7255

Other contacts for Scottish statistics

Forestry Commission	(0131) 314 6337
General Register Office for Scotland - Vital statistics and publications - Population statistics, census statistics or digital boundary products	(0131) 314 4243 (0131) 314 4254
The Scottish Funding Councils for Higher and Further Education	(0131) 313 6575

For **general enquiries about National Statistics** in the United Kingdom Government contact the National Statistics Public Enquiry Service on

020 7533 5888

minicom: 01633 812399
Email: info@statistics.gov.uk
Fax: 01633 652747
Letters: room DG/18, 1 Drummond Gate,
LONDON SW1V 2QQ

You can also find National Statistics on the internet - go to www.statistics.gov.uk

If you would like to be consulted about new or existing statistical collections or receive notification of forthcoming statistical publications, please register your interest on the Scottish Government ScotStat website at www.scotland.gov.uk/Topics/Statistics/scotstat

Current contact points, e-mail addresses and the publications listed below as well as a range of other statistical publications can be found on the Scottish Government Web site at www.scotland.gov.uk/stats

Further information on the General Register Office for Scotland is available on the website www.gro-scotland.gov.uk

Most recent Health Statistical Publications relating to the Community Care theme

Ref no.	Title	Last published	Price
9780755972173	Free Personal And Nursing Care, Scotland, 2006-07	26 August 2008	
9780755970582	Adults with Learning Disabilities, The Same as You?, Scotland 2007	25 March 2008	-
9780755969296	Home Care Services, Scotland 2007	18 December 2007	-
9780755968695	Registered Blind & Partially Sighted Persons, Scotland 2007	27 November 2007	-
9780755968701	Day Care Services, Scotland 2007	27 November 2007	-
9780755968824	Care Homes, Scotland 2007	27 November 2007	-

Additional copies of these publications may be purchased from **Scottish Government Publication Sales, Blackwell's Bookshop, 53 South Bridge, Edinburgh, EH1 1YS**, Telephone: 0131 622 8283 or 0131 622 8258, Fax: 0131 557 8149. Cheques should be made payable to 'Blackwell's Bookshop'.

Complaints and suggestions

If you are not satisfied with our service, please write to the Chief Statistician, Mr Rob Wishart, 3R.01, St Andrews House, Edinburgh, EH1 3DG, Telephone: (0131) 244 0302, e-mail rob.wishart@scotland.gsi.gov.uk. We also welcome any comments or suggestions that would help us to improve our standards of service.

Crown Copyright

Brief extracts from the Crown Copyright material in this publication may be reproduced provided the source is fully acknowledged.