

Statistics Publication Notice

Lifelong Learning Series

5th August 2008

THE AGE PARTICIPATION INDEX FOR SCOTLAND 2006-07

The **Age Participation Index (API) for Scotland 2006-07** is published today by Scotland's Chief Statistician. This updates the previous publication of the API in June 2007. The API is used to measure the percentage of young Scots entering higher education (HE) anywhere in the UK for the first time in a given year.

The main points are as follows:

- In 2006-07, the Age Participation Index for Scotland was 46.9%, a decrease of 0.2 percentage points since 2005-06. The index has been around the 50% mark for the past 10 years, reaching 51.5% between 2000 and 2002 (table 1). In the mid 1980s the index stood, at around 20%.
- Over a ten year period participation by females has been around 10 percentage points higher than by males. Participation rates in 2006-07 were 52.9% for females (a decrease of 0.6 percentage points since last year) and 41.2% for males (an increase of 0.2 percentage points on last years figure of 41%) (table 1). The gender gap has therefore reduced slightly compared to the previous year.
- Since last year initial participation at sub-degree level has risen 0.6 percentage points to 19.1% while participation at first degree level has fallen by 0.7 percentage points to 27.8%. Initial participation at sub-degree level has however declined since 2000-01 (by 3 percentage points) (table 2).
- HEIs contribute 29.6% to the API figure and colleges 15.5%. The share of HEIs has decreased by 0.6 percentage points while colleges increased their contribution by 0.6 percentage points. The share of HEIs in the rest of the UK has decreased by 0.2 percentage points to 1.8% in 2006-07 (table 3).

The following tables and charts are also available on the Scottish Government Statistics Website: <http://www.scotland.gov.uk/!statistics>

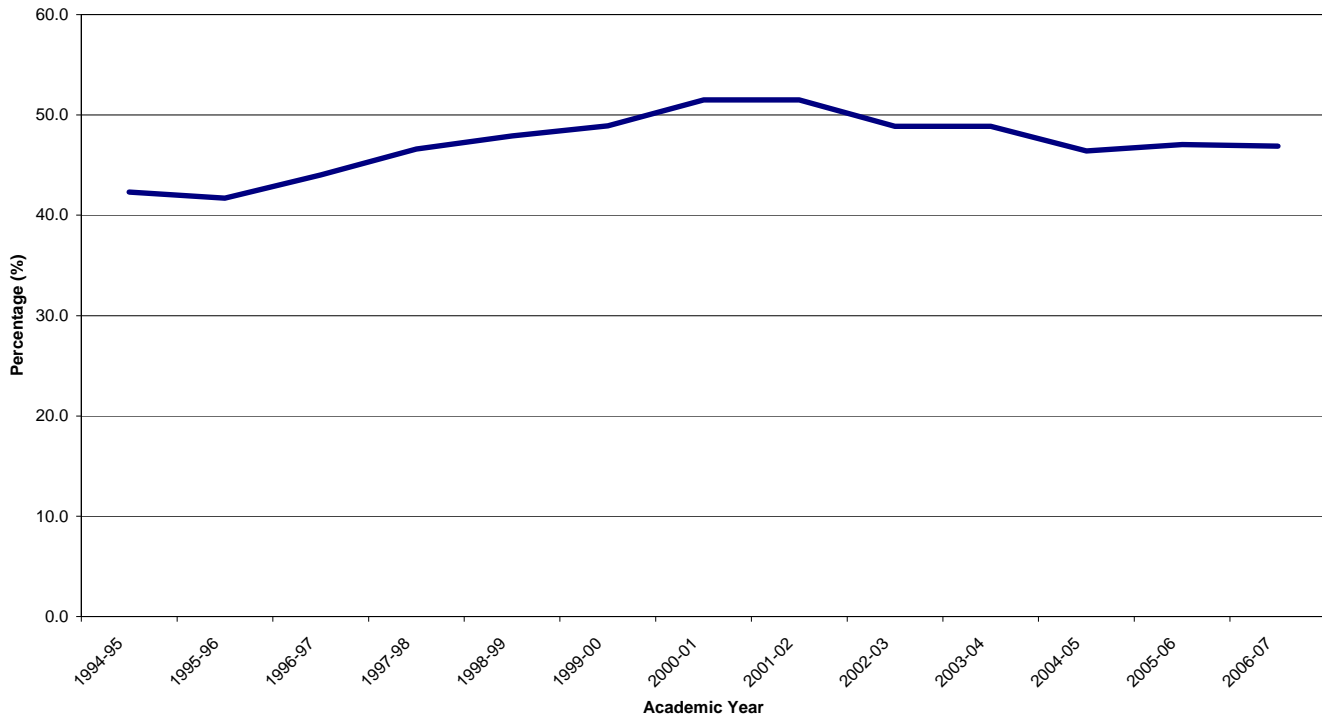
<u>Contents</u>	<u>Page</u>
<u>Summary</u>	1
<u>Contents</u>	2
 <u>Tables</u>	
Table 1 - Age Participation Index for Scotland: 1994-95 to 2006-07	3
Table 2 - Age Participation Index for Scotland by level of study components: 1995-96 to 2006-07	4
Table 3 - Age Participation Index for Scotland by type of institution components: 1995-96 to 2006-07	5
 <u>Charts</u>	
Chart 1 - Age Participation Index: 1994-95 to 2006-07	3
Chart 2 - Age Participation Index by gender: 1994-95 to 2006-07	4
Chart 3 - Age Participation Index by level of study: 1995-96 to 2006-07	5
Chart 4 - Age Participation Index by institution type: 1995-96 to 2006-07	6
 <u>Additional Information</u>	 6
<u>Notes to News Editors</u>	7

Table 1 – Age Participation Index for Scotland: 1994-95 to 2006-07

	Total	Male	Female
1984-85	19.3	20.0	18.5
1985-86	19.6	20.0	19.2
1986-87	20.0	20.3	19.6
1994-95	42.3	41.0	43.7
1995-96	41.7	38.7	44.9
1996-97	44.0	38.9	49.4
1997-98	46.6	42.7	50.7
1998-99	47.9	43.0	52.9
1999-00	48.9	43.9	54.0
2000-01	51.5	46.1	57.0
2001-02	51.5	45.8	57.4
2002-03	48.9	42.8	55.2
2003-04	48.9	43.8	54.2
2004-05	46.4	41.2	51.9
2005-06	47.1	41.0	53.5
2006-07	46.9	41.2	52.9

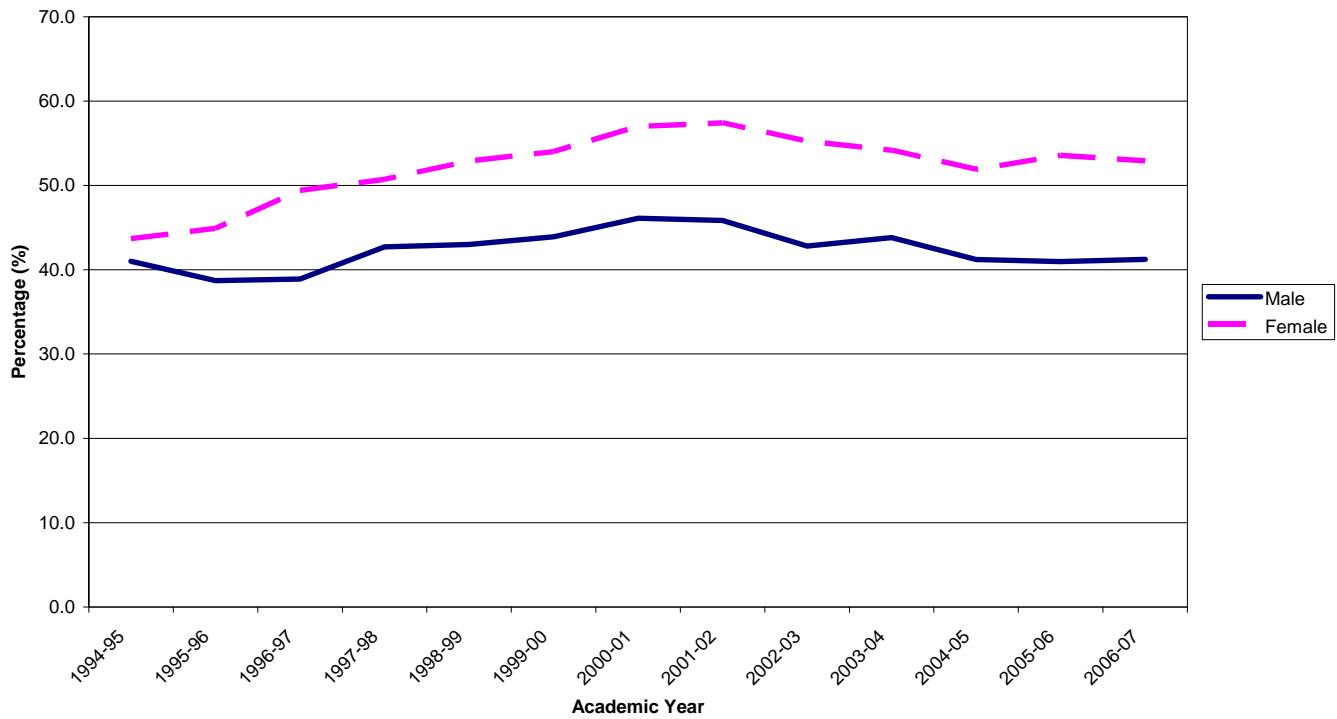
Sources: Higher Education Statistics Agency (HESA) & Scottish Funding Council (SFC).
 Numbers may not sum to totals exactly due to rounding.

Chart 1: Age Participation Index: 1994-95 to 2005-06



Source: Table 1

Chart 2: Age Participation Index by gender: 1994-95 to 2005-06



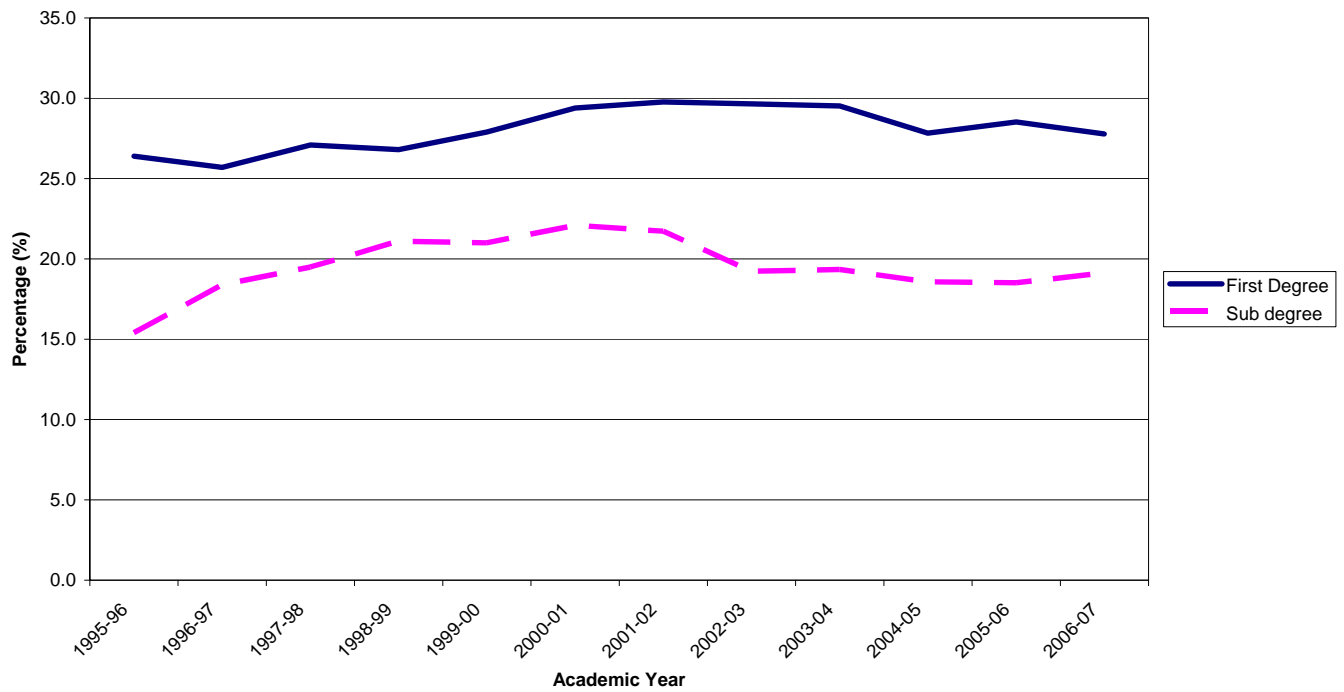
Source: Table 1

Table 2 – Age Participation Index for Scotland by level of study: 1995-96 to 2006-07

	Total	First Degree	Sub degree
1995-96	41.7	26.4	15.4
1996-97	44.0	25.7	18.4
1997-98	46.6	27.1	19.5
1998-99	47.9	26.8	21.1
1999-00	48.9	27.9	21.0
2000-01	51.5	29.4	22.1
2001-02	51.5	29.8	21.7
2002-03	48.9	29.6	19.2
2003-04	48.9	29.5	19.3
2004-05	46.4	27.8	18.6
2005-06	47.1	28.5	18.5
2006-07	46.9	27.8	19.1

Sources: Higher Education Statistics Agency (HESA) & Scottish Funding Council (SFC).
Numbers may not sum to totals exactly due to rounding.

**Chart 3: Age Participation Index by level of study:
1995-96 to 2005-06**



Source: Table 2

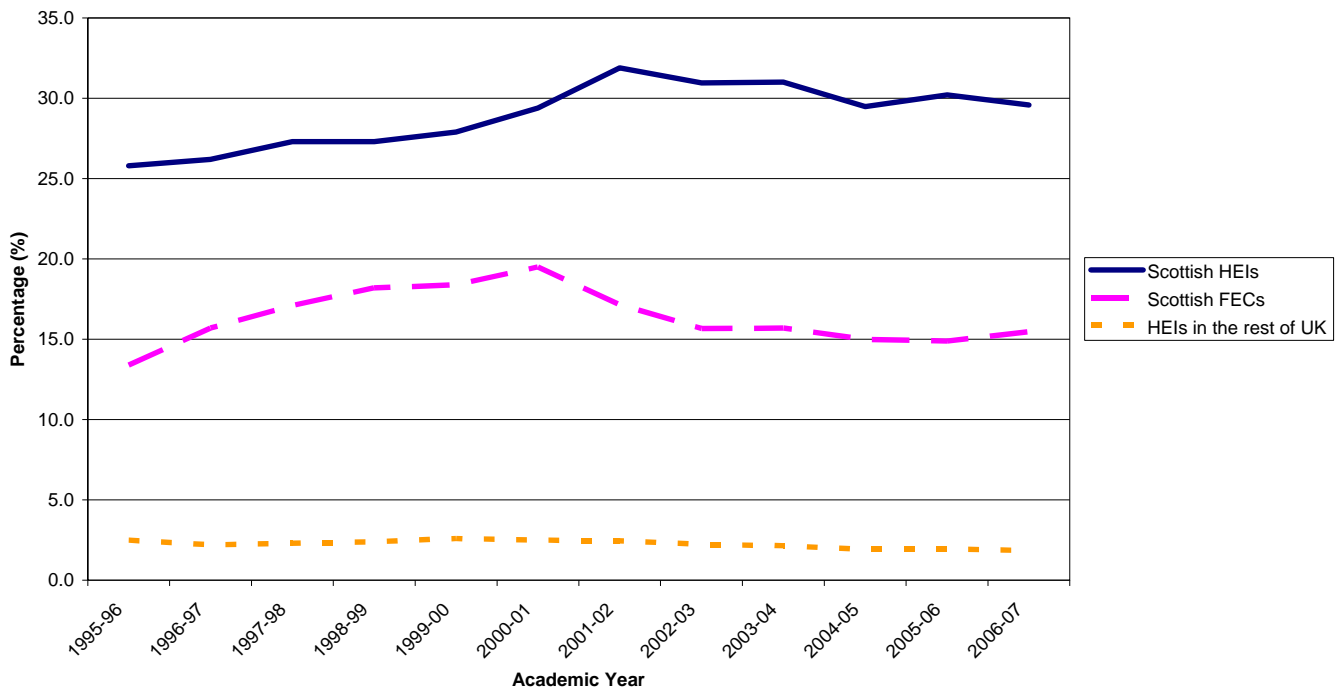
**Table 3: Age Participation Index for Scotland by type of institution components:
1995-96 to 2006-07**

	Total	Scottish Higher Education Institutions	Scottish Further Education Colleges	Higher Education Institutions in the rest of the UK
1995-96	41.7	25.8	13.4	2.5
1996-97	44.0	26.2	15.7	2.2
1997-98	46.6	27.3	17.1	2.3
1998-99	47.9	27.3	18.2	2.4
1999-00	48.9	27.9	18.4	2.6
2000-01	51.5	29.4	19.5	2.5
2001-02	51.5	31.9	17.1	2.5
2002-03	48.9	31.0	15.7	2.2
2003-04	48.9	31.0	15.7	2.2
2004-05	46.4	29.5	15.0	1.9
2005-06	47.1	30.2	14.9	2.0
2006-07	46.9	29.6	15.5	1.8

Sources: Higher Education Statistics Agency (HESA) & Scottish Funding Council (SFC).

Numbers may not sum to totals exactly due to rounding.

**Chart 4: Age Participation Index by institution type:
1995-96 to 2005-06**



Source: Table 3

Additional information:

The API measures first time participation by young Scots in full time HE. An alternative measure of participation which measures the rate of participation for first time, Scottish domiciled, degree level entrants of all ages and all modes of study is published separately at: <http://www.scotland.gov.uk/Topics/Statistics/Browse/Lifelong-learning/DataParticipationHE>

NOTES TO NEWS EDITORS

1. The Scottish Age Participation Index (API) for a given year is defined as the number of young Scots aged under 21 who enter a full-time HE course for the first time in that year taken as a percentage of the population of 17 year olds at 31 December in the same year. In simple terms it is an estimate of the share of 17 year olds in the population who, can be expected to enter HE for the first time before their 21st birthday, if current trends continue.
2. The data used to calculate the Age Participation Index (API) for Scotland are collected by the Higher Education Statistics Agency (HESA) from Higher Education Institutions (HEIs) and by the Scottish Funding Council (SFC) from Scottish colleges.
3. A one percent change in the overall API would correspond to a change of around 645 in the number of young student entrants (based on current estimates for the population of 17 year olds in Scotland).
4. This is a National Statistics publication. National Statistics are produced to high professional standards as set out in the National Statistics Code of Practice. They undergo regular quality assurance reviews to ensure that they meet customer needs. They are produced free from any political interference.

This news release, together with associated tables listed above, is published on the Scottish Executive website <http://www.scotland.gov.uk/llstatistics> those who do not have access to the internet, please contact Andrew Walker. See details below.

For media enquiries please contact:

Ashley Duff
Scottish Government
Communications
Tel. (0131) 244 3070

For further information, non-media enquiries and comments on this publication please contact:

Andrew Walker
Scottish Government
DG Education
Lifelong Learning Statistics
3rd Floor, Meridian Court
5 Cadogan Street
Glasgow, G2 6AT
Tel. (0141) 242 0424
Fax. (0141) 242 5579
E-mail. andrew.walker@scotland.gsi.gov.uk