



Headline Results from the 2007  
Scottish Household Survey



11/06/08

TNS System Three

## 1. Background to the survey

The Scottish Household Survey (SHS) is a continuous survey of a sample of the general population in private residences in Scotland. The survey started in 1999 and is financed by the Scottish Government. From 1999 to 2006, it was undertaken by a partnership of TNS System Three and Ipsos-MORI Scotland. From 2007 the partnership included the Scottish Centre for Social Research. The aim of the survey is to provide representative information about the composition, characteristics and behaviour of Scottish households, both nationally and at a local authority level.

The survey covers a wide range of topics to allow links to be made between different policy areas. There is a particular focus on informing policy on transport, communities and local government. The survey is carried out over two year sweeps in order to obtain a sample size that is large enough to provide results for individual local authority areas. 2007 is the first year of the 2007/08 sweep.

The purpose of this Headline report is to release the 2007 survey data into the public domain. A full report on the findings of the 2007 survey will be published in August 2008. **The figures in this report are provisional and some may be revised slightly for the full annual report.**

The survey sample is designed to provide nationally representative samples of private households and of the adult population in private households. This is achieved by splitting the interview between a household respondent and an adult selected at random from the permanent residents of the household.

The current sample design, like the one used from 1999 to 2006, uses a multi-stage stratified design with a mix of unclustered and clustered sampling. In 2007 the sampling strategy was revised to include a higher proportion of unclustered sampling. The requirement for a minimum sample equivalent to a simple random sample of 500 interviews in each local authority area was maintained but the increased efficiency of the survey means that a smaller total sample size is needed to achieve this. As a result of the sampling changes, in 2007, the survey covered 13,414 households and 12,242 random adults. The previous (2006) survey covered 15,618 households and 14,190 random adults.

Interviewing is conducted using Computer Assisted Personal Interviewing (CAPI). The survey questionnaire is in two parts. The householder or their spouse/partner completes Part 1 of the interview. Once the composition of the household has been established, one of the adults in the household is randomly selected by the computer to complete Part 2. In all households with only one adult the same person completes both parts but as the number of adults in the household increases, the probability of the random adult being the same as the household respondent declines.

The data presented in the report have been weighted in one of two ways. Household data (collected in Part 1 of the interview) are weighted to take account of the disproportionate sampling and response between local authorities. Random adult data (from Part 2) are weighted to reflect both the disproportionate sampling and response to Part 2 between local authorities and the different probabilities of selection within households.

Because of the high level of demand for space in the Scottish Household Survey, a number of sections of the questionnaire are asked of random sub-samples ('streams') of the full SHS sample. Some questions were allocated to streams from the start of the year. Further streaming was undertaken in June 2007 to reduce the length of the questionnaire as it was longer than originally planned. Streamed questions were asked of at least one quarter of the full sample. In this report, where a specific question was asked of a reduced sample size, this is indicated in the relevant table.

The SHS is the source of information on five of the national indicators in the Government's performance framework<sup>1</sup>. One of the indicators is derived from information collected in the travel diary and will be reported later this year. This report provides provisional estimates for the remaining four national indicators.

Full details of the SHS can be obtained from the companion Technical Reports of the survey which can be found on-line at <http://www.scotland.gov.uk/shs>. The change in sample design for this survey year will have had an impact on the design effect of the survey and therefore the confidence intervals of estimates from the survey. Recalculation of the design effects has not been completed ahead of this provisional publication. However, since the aim of the new sample design is to provide estimates with the same degree of precision at lower cost, confidence intervals are unlikely to be very different from those in previous years. The Technical Reports including updated estimates of design effects and guidance on confidence intervals will be published with the main report in August 2008.

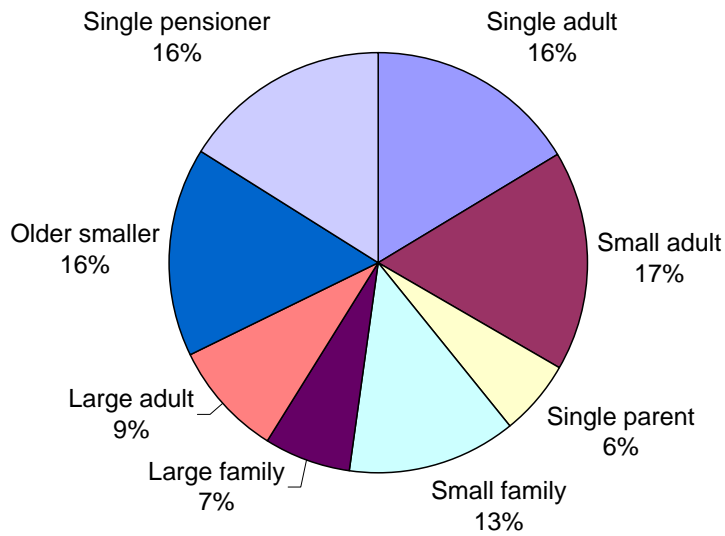
---

<sup>1</sup> Information on the suite of indicators which comprise the performance framework can be found at <http://www.scotland.gov.uk/About/scotPerforms/indicators>

## 2. The composition and characteristics of households in Scotland

The SHS collects information on a number of levels: for the household as a whole, about individual household members and for the Scottish population resident in private households<sup>2</sup>. Information about the household, including details of the age, gender and working status of all household members is collected from the household respondent. The structure of households is illustrated in Figure 2.1. Almost a third of households (32%) in Scotland contain only one adult (single adult i.e. one person of non-pensionable age, or single pensioner<sup>3</sup>). Families with children aged under 16 make up just over a quarter (26%) of households.

**Figure 2.1: Household type**  
2007 data, Households (base: 13414)



<sup>2</sup> The General Register Office for Scotland (GROS) publishes household estimates based on SHS data. These figures differ from those published here, as they are weighted using the 2001 Census results to adjust for any bias due to the under- or over-sampling of certain household types.

<sup>3</sup> Definitions can be found in Section 11

Single adult households (of non-pensionable age) are more common in large urban areas; 20% in large urban areas compared with, for example 10% in remote rural areas (Table 2.1). Conversely, older smaller households are more common in remote rural areas (23%) than in large urban areas (14%).

**Table 2.1: Household type<sup>4</sup> by urban/rural classification**

Column percentages, 2007 data, Households

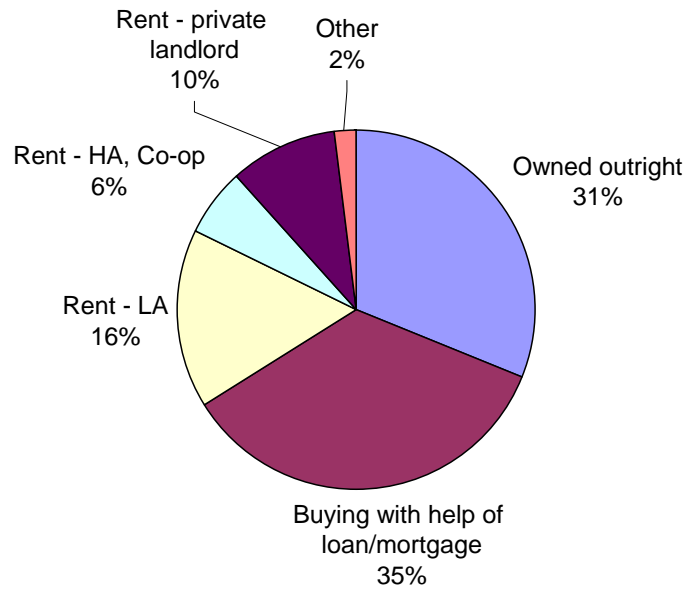
	<b>Large urban areas</b>	<b>Other urban areas</b>	<b>Accessible small towns</b>	<b>Remote small towns</b>	<b>Accessible rural</b>	<b>Remote rural</b>	<b>Scotland</b>
Single adult	20	16	12	15	10	10	<b>16</b>
Small adult	17	16	18	16	20	20	<b>17</b>
Single parent	6	6	7	5	4	4	<b>6</b>
Small family	12	14	14	11	17	12	<b>13</b>
Large family	6	6	7	8	8	7	<b>7</b>
Large adult	9	9	10	7	11	8	<b>9</b>
Older smaller	14	16	16	19	18	23	<b>16</b>
Single pensioner	17	16	16	19	13	17	<b>16</b>
All	100	100	100	100	100	100	<b>100</b>
<i>Base</i>	<i>4,529</i>	<i>3,904</i>	<i>1,131</i>	<i>778</i>	<i>1,743</i>	<i>1,319</i>	<i>13,404</i>

<sup>4</sup> See Section 11 for definitions

### 3. Housing

Figure 3.1 shows the tenure breakdown of Scotland's housing. Owner-occupation – either owned outright or buying with a mortgage – accounts for two-thirds (66%) of tenure, while 22% of households rent from a social landlord and 10% rent from a private landlord.

**Figure 3.1: Tenure of household**  
2007 data, Households (base: 13408)



Two-thirds (66%) of single parent families live in rented accommodation compared with around a quarter of other families with children (23% of small families and 25% of large families) (Table 3.1). Households that contain at least one pensioner more often own their home outright than any other types of households.

**Table 3.1: Tenure of household by household type**

Column percentages, 2007 data, Households

	Single adult	Small adult	Single parent	Small family	Large family	Large adult	Older smaller	Single pensioner	All
Owned outright	16	22	4	9	11	28	70	54	<b>31</b>
Buying with help of loan/mortgage	32	49	27	68	62	47	11	5	<b>35</b>
Rent - Local Authority	22	11	36	11	13	10	11	22	<b>16</b>
Rent - Housing Association/Co-op	9	4	15	4	4	5	3	9	<b>6</b>
Rent - private landlord	18	12	15	8	8	9	3	6	<b>10</b>
Other	2	1	3	1	2	1	1	4	<b>2</b>
Total	100	100	100	100	100	100	100	100	<b>100</b>
<i>Base</i>	<i>2,108</i>	<i>2,318</i>	<i>739</i>	<i>1,771</i>	<i>898</i>	<i>1,214</i>	<i>2,228</i>	<i>2,132</i>	<i>13,408</i>

Renting is most common in cities and towns, particularly in large urban areas where 37% of households live in rented accommodation (Table 3.2). In remote rural areas almost half (47%) of households own their own home outright, more than in any other type of area.

**Table 3.2: Tenure of household by urban/rural classification**

Column percentages, 2007 data, Households

	Large urban areas	Other urban areas	Accessible small towns	Remote small towns	Accessible rural	Remote rural	Scotland
Owned outright	27	30	32	35	38	47	<b>31</b>
Buying with help of loan/mortgage	34	37	37	29	39	25	<b>35</b>
Rent - Local authority	15	19	21	18	10	10	<b>16</b>
Rent - Housing Association/Co-op	10	5	4	6	2	2	<b>6</b>
Rent - private landlord	12	8	5	9	8	12	<b>10</b>
Other	2	1	1	1	3	3	<b>2</b>
Total	100	100	100	100	100	100	<b>100</b>
<i>Base</i>	<i>4,526</i>	<i>3,904</i>	<i>1,131</i>	<i>776</i>	<i>1,742</i>	<i>1,319</i>	<i>13,398</i>

## 4. Neighbourhoods and communities

How adults rate their neighbourhood is a national indicator within the Government's performance framework. Table 4.1 shows that a continuing high proportion of adults (93.0%) feel that their local area is either a 'very good' or 'fairly good' place to live. It is not possible at this stage to say whether the 0.8 percentage points increase in the measurement of the indicator between 2006 and 2007 represents a statistically significant change or has occurred as a result of sampling variation<sup>5</sup>.

**Table 4.1: Rating of neighbourhood as a place to live over time (% rating neighbourhood as very or fairly good)**

Row percentages, 1999-2007 data, Adults

	% rating neighbourhood as very or fairly good	Base
1999	90.9	13,783
2000	91.8	14,557
2001	91.8	14,643
2002	91.8	14,042
2003	92.5	13,968
2004	91.8	14,778
2005	92.4	14,071
2006	92.2	14,190
2007 (prov)	93.0	10,385

From June 2007, this question was asked of three quarters of the sample. From January to May 2007, it was asked of all random adults.

<sup>5</sup> As noted in Section 1, the design effect of the new sampling methodology has not yet been recalculated. In previous surveys a year-on-year increase of 0.8 percentage points would not have been statistically significant at the 95% level.

There is considerable variation between areas when local levels of deprivation<sup>6</sup> are taken into account (Table 4.2), especially in the proportion saying their area is 'very good'. For example, 75% of those in the least deprived areas rate their neighbourhood as 'very good' whereas only 27% of those in the most deprived areas give their neighbourhood the same rating.

**Table 4.2: Rating of neighbourhood as a place to live by Scottish Index of Multiple Deprivation quintile**

Column percentages, 2007 data, Adults

	1 (most deprived)	2	3	4	5 (least deprived)	Scotland
Very good	27	41	55	67	75	53
Fairly good	54	50	40	31	24	40
Fairly poor	11	6	3	2	1	5
Very poor	7	2	1	0	0	2
No opinion	1	0	1	0	0	0
Total	100	100	100	100	100	100
<i>Base</i>	<i>1,952</i>	<i>2,053</i>	<i>2,354</i>	<i>2,116</i>	<i>1,901</i>	<i>10,376</i>

From June 2007, this question was asked of three quarters of the sample. From January to May 2007, it was asked of all random adults.

Adults living in the most deprived areas are more likely to say all of the problems in their neighbourhood are common than are residents of all other areas. For example 46% of adults living in the most deprived areas feel that there is a problem with rubbish and litter and around a third indicate that vandalism (33%), rowdy behaviour (34%) and drug misuse or dealing (29%) are common problems. In contrast, 18% of adults living in the least deprived areas feel that rubbish and litter is a common problem and fewer than 1 in 10 that vandalism (9%), rowdy behaviour (7%) or drug misuse and dealing (3%) are common (Table 4.3).

**Table 4.3: Perception of prevalence of neighbourhood problems by Scottish Index of Multiple Deprivation quintile (% saying each is very or fairly common)**

Column percentages, 2007 data, Adults

	1 (most deprived)	2	3	4	5 (least deprived)	Scotland
Rubbish or litter lying around	46	35	25	20	18	29
Rowdy behaviour	34	20	13	8	7	16
Vandalism/ graffiti/ other deliberate damage to property	33	20	12	8	9	16
Drug misuse or dealing	29	16	9	4	3	12
Groups or individuals intimidating/ harassing others	23	14	9	6	5	11
Noisy neighbours/regular loud parties	19	12	7	4	3	9
Neighbour disputes	10	5	4	2	2	5
Abandoned or burnt out vehicles	5	2	1	1	1	2
<i>Base</i>	<i>1,952</i>	<i>2,053</i>	<i>2,354</i>	<i>2,116</i>	<i>1,901</i>	<i>10,376</i>

From June 2007, this question was asked of three quarters of the sample. From January to May 2007, it was asked of all random adults.

<sup>6</sup> Using the Scottish Index of Multiple Deprivation (SIMD) – see Section 11 for definitions

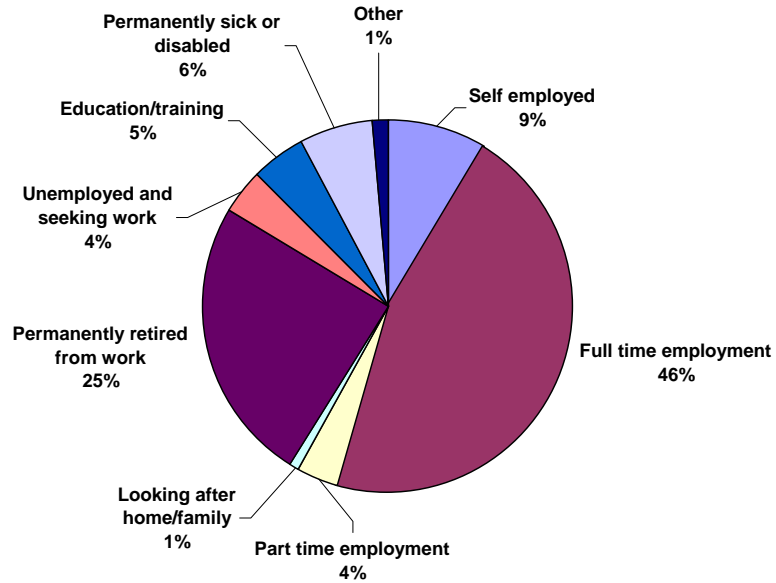
## 5. Economic activity

The SHS collects data on the current economic situation and the characteristics of individuals and households in different economic activity categories. The information gathered in the SHS about the economic status of members of the household is reported by the respondent in the "household" part of the interview and may not conform to official definitions of employment and unemployment. The SHS is not directly comparable with the Labour Force Survey (LFS) - the official source of employment, qualifications and training data in the UK. The SHS has questions on these topics only for selecting the data of particular groups, such as those who are unemployed or permanently retired from work, for further analysis or for use as background variables when analysing other topics.

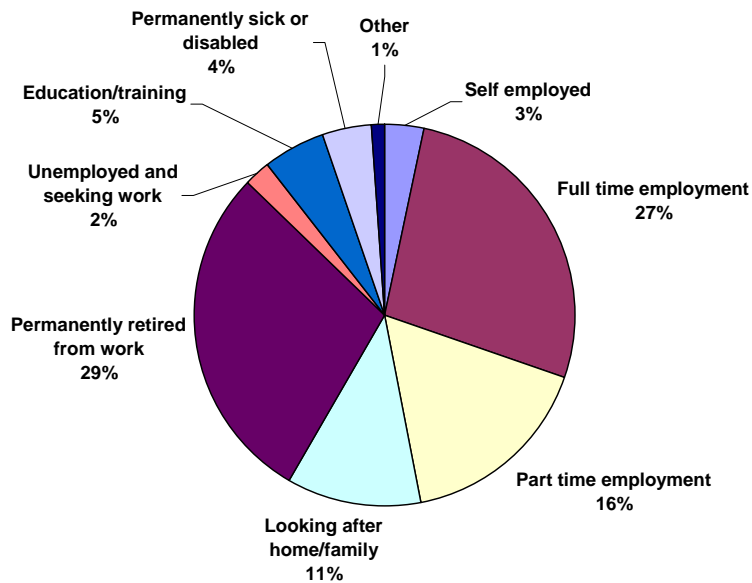
Figure 5.1 shows the economic activity of adults by gender. Almost half (46%) of all men and 27% of women are in full-time employment. Women are more often in part-time employment than men (16% compared with 4%). A quarter of men (25%) and nearly 3 in 10 (29%) women are retired from work. Eleven percent of women report that they are looking after home and family.

**Figure 5.1: Current economic situation of adults**

2007 data, Adult males (base: 5245)



2007 data, Adult females (base: 6976)



## 6. Income and Financial inclusion

Information is collected in the survey about household income and other financial areas such as savings and use of credit. It should be noted that the SHS is not designed to provide reliable statistics on average earnings. Household income in the SHS is the income of the highest income householder and partner only, and so is not directly comparable to the Family Resources Survey (FRS) - the official source of income data in the UK. Once again, the SHS has questions on these topics only for selecting the data of particular groups, such as low paid people, for further analysis or for use as background variables when analysing other topics.

Single pensioner households have the lowest annual household incomes - 85% have an income of £15,000 or less per year with 15% having an income of £6,000 or under. Most single parent families (80%), single adult (78%) and older, smaller (70%) households have an income of £20,000 or less (Table 6.1).

**Table 6.1: Net annual household income\* by household type**

Column percentages, 2007 data, Households

	Single adult	Small adult	Single parent	Small family	Large family	Large adult	Older smaller	Single pensioner	All
£0 - £6000	10	3	3	1	1	3	5	15	<b>6</b>
£6001 - £10000	22	6	17	3	3	6	16	39	<b>15</b>
£10001 -£15000	26	11	35	6	8	12	29	31	<b>20</b>
£15001 - £20000	20	12	25	11	11	14	20	9	<b>15</b>
£20001 - £25000	12	15	11	14	14	13	13	3	<b>12</b>
£25001 - £30000	5	13	5	17	15	14	7	1	<b>9</b>
£30001 - £40000	4	21	2	27	23	23	6	1	<b>13</b>
£40001+	2	18	3	22	25	15	4	0	<b>10</b>
Total (income known)	100	100	100	100	100	100	100	100	<b>100</b>
<i>Base</i>	<i>2,022</i>	<i>2,255</i>	<i>733</i>	<i>1,764</i>	<i>889</i>	<i>1,183</i>	<i>2,110</i>	<i>1,995</i>	<i>12,951</i>

\* Household income in the SHS is that of the highest income householder and their partner only

Almost 1 in 10 (9%) households say that they do not manage very well financially, have some financial difficulties or are in deep financial trouble (Table 6.2). While the percentage of households in these 3 categories increases as deprivation increases (16% in the most deprived areas), over 8 in 10 (83%) in the most deprived areas say they are at least getting by alright. This compares with over 9 in 10 (94%) who are at least getting by alright in the least deprived areas.

**Table 6.2: How the household is managing financially this year by Scottish Index of Multiple Deprivation quintile**

Column percentages, 2007 data, Households

	1 (most deprived)	2	3	4	5 (least deprived)	Scotland
Manage very well	9	13	18	23	29	18
Manage quite well	27	32	34	38	40	34
Get by alright	47	41	39	32	25	37
Don't manage very well	7	4	4	3	2	4
Have some financial difficulties	7	7	3	3	3	4
Are in deep financial trouble	2	2	1	0	0	1
Refused	1	1	1	2	0	1
Total	100	100	100	100	100	100
<i>Base</i>	<i>1,756</i>	<i>1,880</i>	<i>2,096</i>	<i>1,889</i>	<i>1,744</i>	<i>9,365</i>

From June 2007, this question was asked of half the sample. From January to May 2007, it was asked of all households.

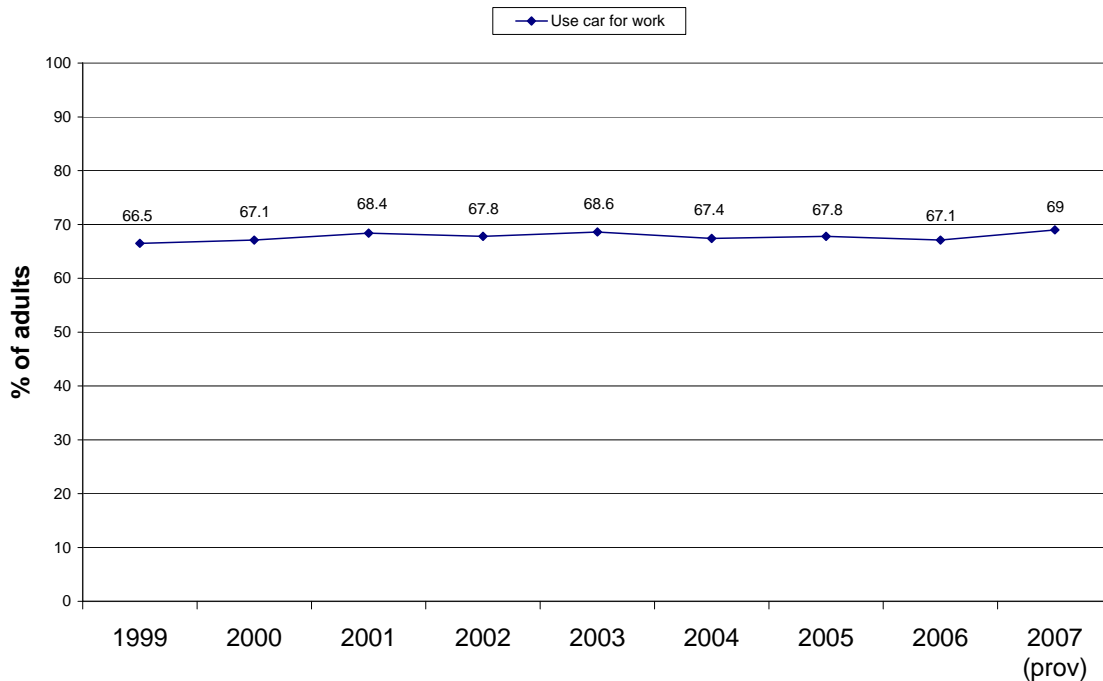
## 7. Transport and travel

The proportion of journeys to work made by public or active transport is a national indicator within the Government's performance framework. Table 7.1 shows that almost 7 in 10 (69%) of adults' journeys to work are usually made by car<sup>7</sup>. It is not possible at this stage to say whether the 1.9 percentage points increase in the measurement of the indicator between 2006 and 2007 represents a statistically significant change or has occurred as a result of sampling variation<sup>8</sup>.

**Figure 7.1: Percentage of adults usually travelling to work by car\***

1999 - 2007 data

Adults in work only, excluding those who work from home (2007 base: 5175)



\*Question text includes car or van

<sup>7</sup> Where car is used in this section, it refers to a car or van, which is included in the actual question text

<sup>8</sup> As noted in Section 1, the design effect of the new sampling methodology has not yet been recalculated. Information on confidence and the statistical significance of estimates from the survey will be published with the main report in August.

Over time it can also be seen that the percentage of adults travelling to work by car as drivers has increased (54.7% in 1999 to 62.8% in 2007) and as a passenger has decreased (11.8% in 1999 to 6.2% in 2007). Bus use in 2007 (12%) is similar to that seen in 1999 (12.2%). (Table 7.1)

**Table 7.1: How adults usually travel to work only, by year**

Column percentages, Adults in work **only**, excluding those who work from home

	1999	2000	2001	2002	2003	2004	2005	2006	2007 (prov)
Walking	13.8	13.7	13.1	13.4	12.9	12.7	12.8	13.9	11.8
Car/Van	66.5	67.1	68.4	67.8	68.6	67.4	67.8	67.1	69.0
Driver	54.7	56.8	58.0	56.7	60.0	59.5	60.2	60.2	62.8
Passenger	11.8	10.3	10.4	11.1	8.6	7.9	7.5	7.0	6.2
Bicycle	1.7	1.7	1.6	1.4	1.7	1.8	1.6	1.9	1.6
Bus (ordinary or works)	12.2	12.5	12.3	12.2	11.5	12.5	11.9	11.6	12.0
Rail	3.0	2.2	2.3	3.0	2.8	3.4	3.7	3.5	3.5
Other	2.9	2.7	2.3	2.2	2.5	2.2	2.2	2.0	2.2
All	100	100	100	100	100	100	100	100	100
Base	6,020	6,253	6,276	5,973	6,033	6,359	6,044	6,068	5,175

As illustrated in Table 7.2, car use is highest in accessible rural areas (74% compared with 49% in large urban areas). Over a quarter of adults in remote small towns (26%) walk to work compared with only 4% of those in accessible rural areas.

**Table 7.2: How adults usually travel to work or education by urban/rural classification**

Column percentages, 2007 data, Adults in work or education, excluding those who work from home

	Large urban areas	Other urban areas	Accessible small towns	Remote small towns	Accessible rural	Remote rural	Scotland
Walking	17	12	11	26	4	13	14
Driver car/van	49	62	65	57	74	66	59
Passenger car/van	6	7	7	5	6	5	6
Bicycle	2	1	1	1	2	2	1
Bus (ordinary, school or works)	20	12	10	7	8	8	14
Rail	5	4	3	2	3	3	4
Other	2	2	2	1	3	3	2
All	100	100	100	100	100	100	100
Base	1,903	1,678	472	310	731	495	5,589

There are differences in modes of transport used by income. Among those adults in households with an income of over £40,000 per year, three quarters travel by car compared with one quarter of those in the lowest income group. Whereas a higher percentage of adults in the lowest income group walk to work or education (45% compared with 8% of the highest income band) or travel by bus (27% compared with 8% of the highest income band) (Table 7.3).

**Table 7.3: How adults usually travel to work or education by net annual household income**

Column percentages, 2007 data, Adults in work or education, excluding those who work from home

	£0 -	£6,001 -	£10,001 -	£15,001 -	£20,001 -	£25,001 -	£30,001 -	Over £40,000	All
	£6,000	£10,000	£15,000	£20,000	£25,000	£30,000	£40,000		
Walking	45	28	22	17	15	9	9	8	13
Driver car/van	23	30	42	51	57	63	66	72	59
Passenger car/van	2	10	6	8	6	8	7	3	6
Bicycle	0	1	1	2	1	2	1	2	1
Bus (ordinary, school or works)	27	27	24	17	17	12	9	8	14
Rail	2	3	4	3	3	4	5	5	4
Other	1	2	2	2	2	2	2	3	2
All	100	100	100	100	100	100	100	100	100
Base	103	272	707	842	819	733	1,132	931	5,539

Household income in the SHS is that of the highest income householder and their partner only

Over half of all school pupils (54%) walk to school. Twenty-two percent travel to school in a car or van, while 21% travel by bus. Children in rural areas were more likely to travel to school by bus, and less likely to walk to school than children in urban areas (Table 7.4).

**Table 7.4: How school children normally travel to school by urban/rural classification**

Column percentages, 2007 data, Pupils in full-time education at school

	Large urban areas	Other urban areas	Accessible small towns	Remote small towns	Accessible rural	Remote rural	Scotland
Walking	57	63	57	68	34	33	54
Driver/passenger car/van	22	19	19	22	30	18	22
Bicycle	1	2	0	-	-	1	1
Bus (ordinary, school, or private)	17	15	22	9	33	47	21
Rail	3	0	0	-	0	-	1
Other	1	2	1	2	4	1	2
All	100	100	100	100	100	100	100
Base	775	762	233	150	358	235	2,513

More than two-thirds of households (70%) have access to at least one car for private use. Almost all households in the highest income group have access to a car for private use (98%) compared with less than half (42%) of households in the lowest income group (Table 7.5).

**Table 7.5: Whether any cars normally available to the household for private use by net annual household income**

Column percentages, 2007 data, Households

	£0 - £6,000	£6,001 - £10,000	£10,001 - £15,000	£15,001 - £20,000	£20,001 - £25,000	£25,001 - £30,000	£30,001 - £40,000	Over £40,000	All
Yes	42	39	52	71	86	90	96	98	<b>70</b>
No	58	61	48	29	14	10	4	2	<b>30</b>
Total	100	100	100	100	100	100	100	100	<b>100</b>
<i>Base</i>	<i>766</i>	<i>1,965</i>	<i>2,558</i>	<i>1,900</i>	<i>1,508</i>	<i>1,192</i>	<i>1,720</i>	<i>1,342</i>	<i>12,951</i>
Household income in the SHS is that of the highest income householder and their partner only									

## 8. Local services

Improving public perceptions of the quality of public services delivered is a national indicator within the Government's performance framework. Specifically, this includes perceptions of local health services, local schools and public transport.

Table 8.1 shows that 57.8% of adults said they were very or fairly satisfied with all 3 local services. This figure includes those who expressed 'No opinion' for up to 2 of the services. They are included because, for example, those without children might have no opinion about the local schools but are satisfied with all other aspects of local services. The base number quoted also therefore includes people with up to 2 'no opinions'.

**Table 8.1: Percentage of people very or fairly satisfied with the quality of local health services, local schools and public transport combined**

2007 data, Adults

	<b>% very or fairly satisfied</b>	<i>Base</i>
<b>% satisfied with all three of these (of those services for which an opinion was given)<sup>9</sup></b>	<b>57.8</b>	<b>10,082</b>

From June 2007, the question from which this is derived was asked of three quarters of the sample. From January to May 2007, it was asked of all random adults.

Table 8.2 shows that individually, adults were most satisfied with local health services (81.9%), followed by local schools (78.8%). Adults were least satisfied with public transport, although almost 7 in 10 (69.9%) were very or fairly satisfied with that service.

**Table 8.2: Percentage of people very or fairly satisfied with the quality of public services delivered – of those who gave an opinion**

Row Percentages, 2007 data, Adults

	<b>% very or fairly satisfied</b>	<i>Base (people stating 'no opinion' excluded from results)</i>
Local health services	81.9	9,825
Local Schools	78.8	6,267
Public Transport	69.9	8,600

From June 2007, this question was asked of three quarters of the sample. From January to May 2007, it was asked of all random adults.

<sup>9</sup> Calculated as the percentage of adults who said they were very or fairly satisfied with all services (this includes those who expressed 'No opinion' for up to 2 of the services). See <http://www.scotland.gov.uk/Publications/2007/11/30090722/0> for further explanation

The majority of adults find most services convenient to access, although adults with no access to a car find accessing some services less convenient. For example, 76% of respondents who have no access to a car find ATMs very or fairly convenient compared with 87% of those who have access to a car. However, adults with access to a car say public transport is convenient (79%) less often compared to those without (89%). Those with access to a car also say more often that hospital outpatients departments, doctors and dentists are convenient (Table 8.3).

**Table 8.3: Percentage finding services very or fairly convenient by access to a car**  
Column percentages, 2007 data, Adults

	<b>Access to a car</b>	<b>No access to a car</b>	<b>All</b>
Post office	86	85	<b>86</b>
Banking services	76	70	<b>74</b>
Cash machine or ATM	87	76	<b>84</b>
Doctors surgery	83	78	<b>82</b>
Small amount of grocery or food shopping	94	93	<b>94</b>
Chemist/pharmacist	89	88	<b>89</b>
Hospital outpatients department	60	53	<b>58</b>
Petrol station	86	43	<b>76</b>
Public transport	79	89	<b>81</b>
Dentist	70	65	<b>69</b>
<i>Base</i>	<i>7,114</i>	<i>2,951</i>	<i>10,065</i>

Columns add to more than 100% since multiple responses allowed

From June 2007, this question was asked of three quarters of the sample. From January to May 2007, it was asked of all random adults.

The type of area in which adults live also impacts on perceptions of convenience of some services. For example, adults living in remote rural areas say public transport is very or fairly convenient less often - 53% compared with 87% in large urban areas. Respondents in urban areas and small towns more often report that they find dentists and chemists/ pharmacists convenient than do those in rural areas. Fewer residents in large urban and accessible rural areas report that doctor's surgeries are convenient than do adults who live in any other type of area. (Table 8.4).

**Table 8.4: Percentage finding services very or fairly convenient by urban/rural classification**

Column percentages, 2007 data, Adults

	Large urban areas	Other urban areas	Accessible small towns	Remote small towns	Accessible rural	Remote rural	Scotland
Post office	81	84	90	94	84	87	<b>84</b>
Banking services	72	78	71	88	62	69	<b>73</b>
Cash machine or ATM	82	85	89	90	74	74	<b>82</b>
Doctors surgery	77	81	85	88	78	84	<b>80</b>
Small amount of grocery or food shopping	92	93	95	95	88	88	<b>92</b>
Chemist/pharmacist	88	89	94	94	77	73	<b>87</b>
Hospital outpatients department	58	60	50	71	50	51	<b>57</b>
Petrol station	71	79	74	85	69	77	<b>74</b>
Public transport	87	84	80	81	60	53	<b>80</b>
Dentist	70	72	71	70	54	56	<b>68</b>
<i>Base</i>	<i>3,407</i>	<i>3,032</i>	<i>866</i>	<i>631</i>	<i>1,330</i>	<i>1,037</i>	<i>10,303</i>

Columns add to more than 100% since multiple responses allowed

From June 2007, this question was asked of three quarters of the sample. From January to May 2007, it was asked of all random adults.

Less than half of all respondents (41%) agree that the services provided by their local council are of high quality. From the age of 25, this is strongly related to the respondent's age. Older people more often agree or strongly agree that services are of high quality (51% of those aged 75 and over compared with 34% of those aged 25-34). A higher percentage of 16-24 year olds neither agreed nor disagreed, or had no opinion about the quality of services provided (40%). (Table 8.5).

**Table 8.5: Level of agreement with the statement 'My council provides high quality services' by age**

Column percentages, 2007 data, Adults

	16 to 24	25 to 34	35 to 44	45 to 59	60 to 74	75 plus	All
Strongly agree	3	3	4	4	7	8	<b>5</b>
Tend to agree	31	31	35	34	40	43	<b>36</b>
Neither agree nor disagree	25	27	26	23	17	18	<b>22</b>
Tend to disagree	16	19	20	22	20	16	<b>20</b>
Strongly disagree	9	12	11	14	12	7	<b>11</b>
No opinion	15	8	4	3	4	7	<b>6</b>
Total	100	100	100	100	100	100	<b>100</b>
<i>Base</i>	<i>784</i>	<i>1,376</i>	<i>1,808</i>	<i>2,468</i>	<i>2,429</i>	<i>1,357</i>	<i>10,222</i>

From June 2007, this question was asked of three quarters of the sample. From January to May 2007, it was asked of all random adults.

Recycling services are used by the majority (85%) of households in Scotland. The items most households recycle are newspapers, magazines, paper and cardboard (81%) with two thirds of households recycling glass bottles and jars (67%). Over half of all households recycle metal cans (59%) and plastic bottles (58%). Recycling of these items is related to the type of property in which households live, reflecting the availability of recycling facilities. For example, 92% of households living in a house or bungalow recycle one or more of these items compared with 55% for those living in high rise flats. (Table 8.6).

**Table 8.6: Items recycled in the past month by accommodation type**

Column percentages, 2007 data, Households

	House or bungalow	Flat (new or traditional tenement / four-in-a-block or conversion)	Flat (in a high-rise block with five or more levels)	All <sup>1</sup>
Glass bottles and jars	75	51	39	<b>67</b>
Plastic bottles	63	48	33	<b>58</b>
Metal cans	66	46	33	<b>59</b>
Newspaper/magazine/paper/ cardboard	89	66	51	<b>81</b>
One or more of the above	92	70	55	<b>84</b>
<i>Base</i>	<i>7,958</i>	<i>3,018</i>	<i>258</i>	<i>11,331</i>

<sup>1</sup> 'All' includes households living in caravans or other accommodation

Columns add to more than 100% since multiple responses allowed

From June 2007, this question was asked of three quarters of the sample. From January to May 2007, it was asked of all households.

## 9. Internet

Table 9.1 shows that 38% of adults never use the internet. Virtually all of those who do, use it either for personal use only (31%) or for personal and work use (29%). A higher percentage of younger respondents use the internet. Only 13% of 16 to 24 year olds never use the internet compared with 90% of those aged 75 and over.

**Table 9.1: Internet use by age**

Column percentages, 2007 data, Adults

	16 to 24	25 to 34	35 to 44	45 to 59	60 to 74	75 plus	All
No, never use the internet	13	15	20	33	62	90	<b>38</b>
Work only	3	3	2	3	1	0	<b>2</b>
Personal use only	51	36	32	28	29	10	<b>31</b>
Both work and personal use	32	46	45	35	7	0	<b>29</b>
Total	100	100	100	100	100	100	<b>100</b>
Base	923	1,655	2,189	2,961	2,916	1,592	12,236

As well as investigating personal use of the internet, the SHS also asks about household access to internet and broadband connection. 57% of households have an internet connection. (Table 9.2). Proportionately more households in rural areas have internet access than in urban areas and small towns. There is less variation in the percentage of households having broadband, though it appears that households in rural areas, especially accessible ones, are marginally more likely to have a broadband internet connection.

**Table 9.2: Household internet access and broadband internet connection by urban/rural classification**

Column percentages, 2007 data, Households

	Large urban areas	Other urban areas	Accessible small towns	Remote small towns	Accessible rural	Remote rural	Scotland
Yes - internet access	54	55	58	55	67	66	<b>57</b>
With broadband connection	48	49	48	45	54	51	<b>50</b>
No broadband connection	5	6	9	9	13	14	<b>7</b>
DK if broadband connection	1	1	0	0	1	1	<b>1</b>
No internet access	46	45	42	45	33	34	<b>42</b>
Total	100	100	100	100	100	100	<b>100</b>
Base	3,796	3,289	958	677	1,488	1,111	11,319

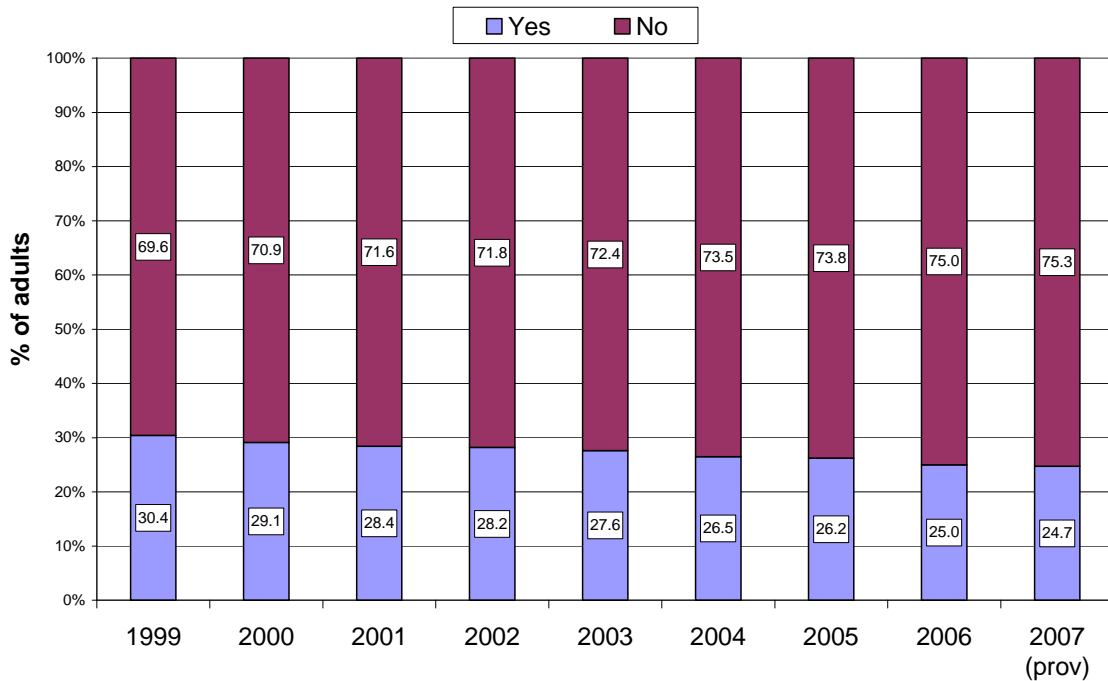
From June 2007, these questions were asked of three quarters of the sample. From January to May 2007, they were asked of all households.

## 10. Health

Reducing the percentage of the adult population who smoke is a national indicator within the Government's performance framework, with a target of 22% by 2010. Table 10.1 shows that a little under a quarter of adults now smoke (24.7%). Since 1999, smoking among adults has declined steadily. It is not possible at this stage to say whether the 0.3 percentage points decrease in the measurement of the indicator between 2006 and 2007 represents a statistically significant change or has occurred as a result of sampling variation<sup>10</sup>.

**Figure 10.1: Whether respondent smokes by year**

1999-2007 data, Adults (2007 base: 10412)



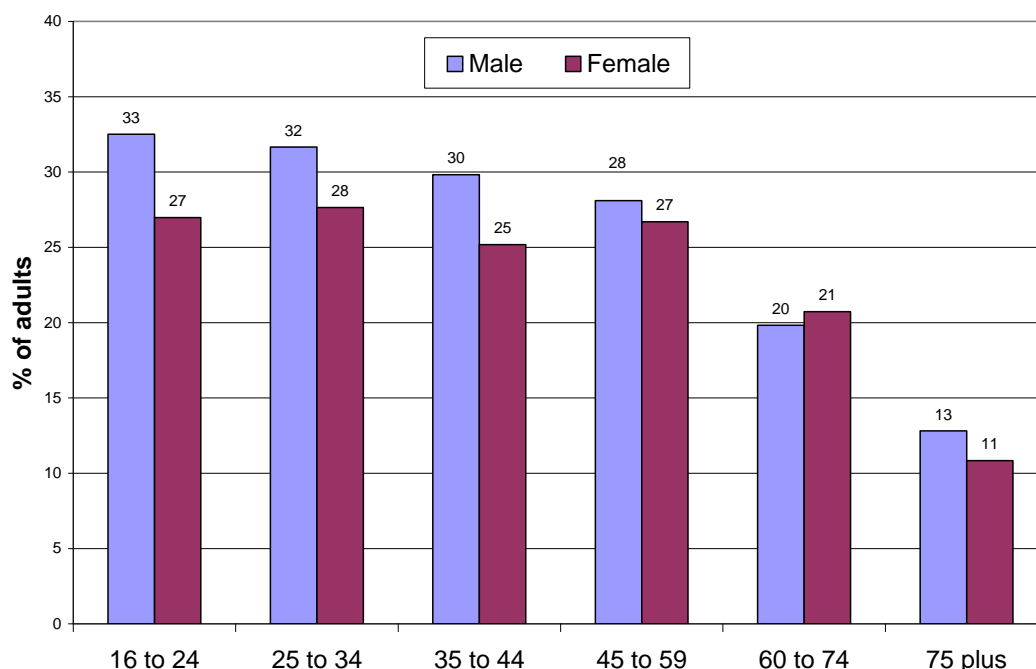
From June 2007, this question was asked of three quarters of the sample. From January to May 2007, it was asked of all random adults.

<sup>10</sup> As noted in Section 1, the design effect of the new sampling methodology has not yet been recalculated. In previous surveys a year-on-year decrease of 0.3 percentage points would not have been statistically significant at the 95% level.

Figure 10.2 shows the proportion of adults who smoke in Scotland by age and gender. Smoking is most common among 16 to 24 year old men and this is also the age group where there is the largest difference between men (33%) and women (27%). Smoking decreases slightly among males between the ages of 16-24 and 45-59 but stays almost the same among females. From the age of 60 smoking declines more quickly, with around one in five 60 – 74 year olds smoking (20% male, 21% female) and a little over one in ten of those aged 75 and over reporting they do so (13% male, 11% female).

**Figure 10.2: Whether respondent smokes, by age and gender**

2007 data, Adult males (base: 4476) and females (base: 5932)



From June 2007, this question was asked of three quarters of the sample. From January to May 2007, it was asked of all random adults.

As can be seen from Table 10.1, smoking is more prevalent in the most deprived areas; 40% compared with 13% in the least deprived areas.

**Table 10.1: Whether respondent smokes by Scottish Index of Multiple Deprivation quintile**

Column percentages, 2007 data, Adults

	1 (most deprived)	2	3	4	5 (least deprived)	Scotland
Yes	40	32	23	17	13	25
No	60	68	77	83	87	75
Total	100	100	100	100	100	100
Base	1,944	2,087	2,336	2,125	1,912	10,404

From June 2007, this question was asked of three quarters of the sample. From January to May 2007, it was asked of all random adults.

Table 10.2 shows that, while most people describe their health as good or fairly good, those living in the most deprived areas do so less often (78% in the most deprived areas compared with 92% in the least deprived areas).

**Table 10.2: Self perception of health by Scottish Index of Multiple Deprivation quintile**

Column percentages, 2007 data, Adults

	<b>1 (most deprived)</b>	<b>2</b>	<b>3</b>	<b>4</b>	<b>5 (least deprived)</b>	<b>Scotland</b>
Good	44	49	54	58	63	<b>54</b>
Fairly good	34	35	33	31	29	<b>33</b>
Not good	22	16	12	11	8	<b>14</b>
Total	100	100	100	100	100	<b>100</b>
<i>Base</i>	<i>2,298</i>	<i>2,425</i>	<i>2,704</i>	<i>2,464</i>	<i>2,198</i>	<i>12,089</i>

## 11. Definitions

### Household type

The SHS uses eight household types defined as follows:

A **single adult** household contains one adult of non-pensionable age and no children

A **single parent** household contains one adult of any age and one or more children

A **single pensioner** household contains one adult of pensionable age and no children. Pensionable age is 60 for women and 65 for men

A **small family** household contains two adults of any age and one or two children

An **older smaller** household contains one adult of non-pensionable age and one of pensionable age and no children, or two adults of pensionable age and no children

A **large adult** household contains three or more adults and no children

A **small adult** household contains two adults of non-pensionable age and no children

A **large family** household contains two adults of any age and three or more children, or three or more adults of any age and one or more children

### Urban/rural classification

The Scottish Government six-fold urban/rural classification of Scotland has been adopted. This classification is based on settlement size and remoteness (measured by drive times) allowing more detailed geographical analysis to be conducted on a larger sample size. The classification being used in this report is the 2006 version.

The areas in which respondents live have been classified as follows:

**Large urban areas** – settlements of over 125,000 people

**Other urban areas** – settlements of 10,000 to 125,000 people

**Accessible small towns** – settlements of between 3,000 and 10,000 people and within 30 minutes drive of a settlement of 10,000 or more

**Remote small towns** – settlements of between 3,000 and 10,000 people and with a drive time of over 30 minutes to a settlement of 10,000 or more

**Accessible rural** – settlements of less than 3,000 people and within 30 minutes drive of a settlement of 10,000 or more

**Remote rural** – settlements of less than 3,000 people with a drive time of more than 30 minutes to a settlement of 10,000 or more

Isolated houses and hamlets are included in settlements of fewer than 3,000 people

## Scottish Index of Multiple Deprivation

The Scottish Index of Multiple Deprivation (SIMD) 2006 identifies the most deprived areas across Scotland. It is based on 31 indicators in the six individual domains of Current Income, Employment, Housing, Health, Education, Skills and Training and Geographic Access to Services and Telecommunications.

SIMD is presented at data zone level, enabling small pockets of deprivation to be identified. The data zones are ranked from most deprived (1) to least deprived (6,505) on the overall SIMD and on each of the individual domains. The result is a comprehensive picture of relative area deprivation across Scotland. In the tables in this report, the data zones are grouped into quintiles, from the most deprived 20% (1) to the least deprived 20% (5).

## Tenure

Housing tenure is broken down into six categories, namely:

**Owned outright** – Households who own their property outright

**Buying with the help of loan/mortgage** – Household buying their property with a mortgage or loan (including paying part mortgage and part rent under a shared ownership arrangement)

**Rent – Local Authority/Scottish Homes** – Households renting from a local authority or Scottish Homes/successor organisations

**Rent - Housing Association Co-op** – Households renting from a Housing Association or Co-operative

**Rent – private landlord** – Households renting from a private landlord or from a friend or relative of a household member

**Other** – Others including those living rent free or renting from an employer

## A note on base sizes

Following the convention used in previous SHS Headline and Annual reports tables and figures in this report are based on all cases for which information is available. This means that missing cases are excluded from the base on which the percentages shown are calculated. This will occasionally lead to slight variations in total columns. For example in table 7.2 the base and percentages for 'Scotland' (the combined total of all the individual urban/rural areas) vary from those in table 7.3 for 'All' (the combined total of all the incomes).

### **This is a National Statistics Publication**

"This is a National Statistics publication. It has been produced to high professional standards set out in the National Statistics Code of Practice Protocol - see [www.statistics.gov.uk/about\\_ns/cop/default.asp](http://www.statistics.gov.uk/about_ns/cop/default.asp)

These statistics undergo regular quality assurance reviews to ensure that they meet customer needs. They are produced free from any political interference."

Details of pre-release access will be provided in the Scottish Government Statistics Website under 'Forthcoming Releases'

### **Correspondence and enquiries**

Enquiries on the Scottish Household Survey should be addressed to:

The SHS Team  
Housing and Household Surveys  
Communities Analytical Services  
1F(N) Victoria Quay  
Edinburgh  
EH6 6QQ  
Telephone: (0131) 244 8420; Fax: (0131) 244 7573  
e-mail: [shs@scotland.gsi.gov.uk](mailto:shs@scotland.gsi.gov.uk)

General enquiries on Scottish Government statistics can be addressed to:

Office of the Chief Statistician  
Scottish Government  
3 Floor West Rear  
St Andrews House  
EDINBURGH  
EH1 3DG  
Telephone: (0131) 244 0442; Fax: (0131) 244 2223  
e-mail: [statistics.enquiries@scotland.gsi.gov.uk](mailto:statistics.enquiries@scotland.gsi.gov.uk)