

# GYPSIES/TRAVELLERS IN SCOTLAND

## The Twice Yearly Count – No. 12: July 2007

### SUMMARY OF FINDINGS

- The July 2007 Count recorded a total of 848 Gypsies/Travellers households in Scotland living on sites and encampments. This is estimated to represent a population of around 2,800 and is the highest number recorded since the Counts began in 1998.
- 286 households were staying on Council/Registered Social Landlord (RSL) sites, 155 on private sites and 407 in unauthorised camps (comparable figures for July 2006 were 266 households on Council sites, 137 on private sites and 325 in unauthorised encampments).
- Over the last 3 years the summer Count has recorded a marked increase in the number of unauthorised encampments. This year 28 of Scotland's 32 local authorities report periodic experience of unauthorised encampments by Gypsies/Travellers in their area. At the time of the Count 61 separate encampments were recorded across 19 local authority areas; these varied in size from 1 to 36 households.
- In 2007 34% of households were living on sites owned by Councils or RSLs, 18% on privately owned sites and 48% on unauthorised encampments.
- There are now 32 Council/RSL sites across Scotland; 29 of these are year round sites and 3 are seasonal (open summer only). These sites provide a total of 508 pitches of which 68% were tenanted, 21% were available for let and 11% were unavailable for let.
- Half of all Council/RSL sites are operating at their current operational capacity while the other half have spare capacity. Only 2 sites were unoccupied at the time of the Count, one of these being seasonal.
- Over a third of tenants (36%) had been in their tenancy for less than 1 year, a third (32%) for 1-5 years and almost a third (32%) for over 5 years.
- 38% of the population on Council/RSL sites is under 17 years compared to only 19% among the wider Scottish population; on the other hand only 6% are of pensionable age compared to 19% in the wider population.
- A total of 18 private sites across 9 local authority areas were identified as available for Gypsies/Travellers – 10 year round and 8 seasonal sites. An estimated 155 households were resident on these at the time of the Count; this was 13% higher than the number in July 2006.
- 75% of pitches on private sites were classified as long stay (4 weeks or more) and 25% as short stay (under 4 weeks). The sites were split equally between those specifically intended for Gypsies/Travellers and commercial holiday/touring sites.

A report by Craigforth on behalf of  
**Scottish Government Social Research**

<b>CONTENTS</b>	<b>Page</b>
<b>1. INTRODUCTION</b>	<b>3</b>
<b>2. OVERALL TRENDS</b>	<b>4</b>
<b>3. COUNCIL/RSL SITES</b>	<b>9</b>
<b>4. PRIVATE SITES</b>	<b>16</b>
<b>5. UNAUTHORISED ENCAMPMENTS</b>	<b>19</b>

APPENDIX OF TABLES (available on request from John Ritchie in the Scottish Government's Social Housing Division: e-mail [John.Ritchie@scotland.gsi.gov.uk](mailto:John.Ritchie@scotland.gsi.gov.uk) or telephone 0131 244 5568)

Table 1: Council/RSL Sites: Pitch Occupancy By Site July 2007

Table 2: Council/RSL Sites: Length Of Tenancy Profile By Local Authority Area July 2007

Table 3: Council/RSL Sites: Movement Away From Sites By Local Authority Area July 2007

Table 4: Council/RSL Sites Tenancy Change And Demand By Local Authority Area July 2007

Table 5: Council/RSL Sites - Age Structure Profile By Site July 2007

Table 6: Private Sites- Availability And Usage July 2007

Table 7: Characteristics Of Unauthorised Encampments Occupied July 2007

Table 8: Gypsies/Travellers Households By Local Authority Area And Type Of Site July 2007

Table 9: Gypsies/Travellers Households By Local Authority Area And Type Of Site 4 Year and 7 Year Mean

## **1. INTRODUCTION**

1.1 Gypsies/Travellers are a small but distinctive ethnic and cultural minority within the Scottish population. The Scottish Government recognises that Gypsies/Travellers have specific requirements and that they should receive the same level of protection from prejudice and discrimination as other ethnic minority groups in Scotland. The definition of Gypsies/Travellers excludes Occupational/Show Travellers and New (Age) Travellers.

1.2 In July 1998 the former Scottish Executive (now Scottish Government) introduced a series of Twice Yearly Counts of this population (undertaken in January and July of each year) to introduce standardised and consistent estimates across Scotland. The purpose of the Count is to more fully understand the characteristics of this population and to assist and inform the development of public policies and services for Gypsies/Travellers, both nationally and locally.

1.3 The Count is based on an estimate of the number of Gypsies/Travellers households living on:

- Sites provided by Councils or Registered Social Landlords (RSLs)
- Privately owned sites
- Unauthorised encampments.

1.4 It is therefore a count of the site/encampment based population (only) and does not seek to capture those living in ordinary housing. The latter are difficult to quantify not least because of a reluctance to self identify.

1.5 Travelling extensively for parts or all of the year among some Scottish based Gypsies/Travellers has become less common than in the past and this is true in particular for some who have become settled for long periods of time on official Council/RSL or private sites. For others, travelling is still very much part of their culture and lifestyle.

1.6 The incidence of travelling means that the Gypsies/Travellers population in Scotland can vary considerably at different points in time. This is particularly true between the winter and the summer months.

1.7 This report follows a slightly different format than previously published reports on the Twice Yearly Count. It focuses more on overall trends and information at local authority area level rather than on the details of individual sites.

### **Acknowledgement**

1.8 Thanks to all the local authority and Registered Social Landlord (RSL) staff who assisted with the completion of the July 2007 Count.

## 2. OVERALL TRENDS

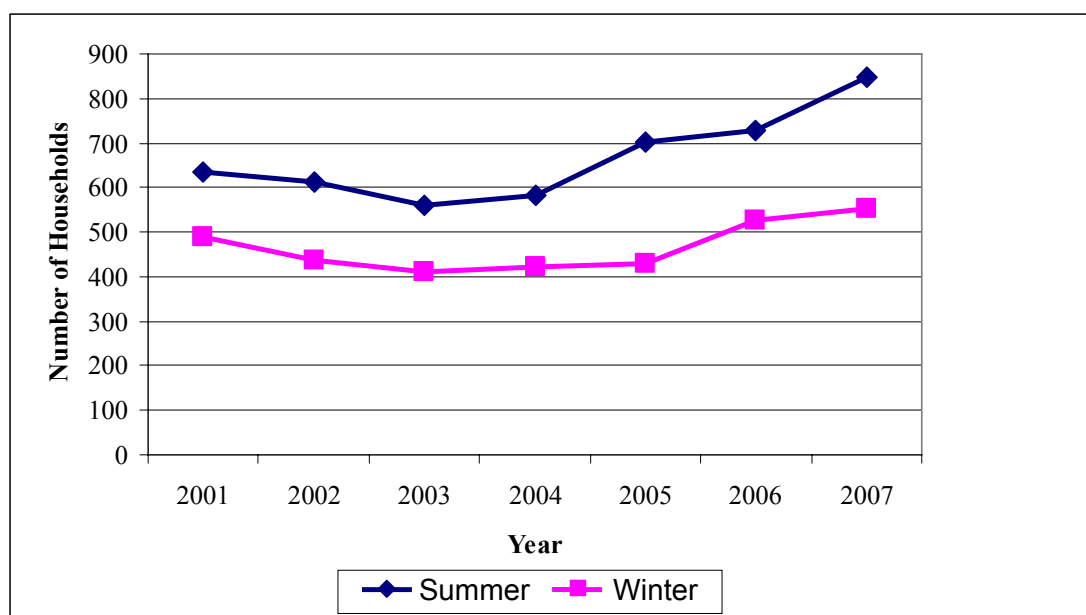
2.1 Between 2001 and 2004 the summer (July) Gypsies/Travellers population fluctuated around 600 households. From 2005 onwards this number began to increase significantly to around 700 in 2005 and 2006. This latest Count in July 2007 has seen a continuation of this trend with another substantial increase to 848 households. This represents a 33% increase in the number of households since summer 2001.

2.2 It is estimated that these 848 households are likely to represent a total population of around 2,800 people accounting for 0.05% of the total Scottish population<sup>1</sup>.

2.3 From 2001 through to 2004 the summer number of Gypsies/Travellers households was between 30 and 40% higher than the winter number although from then on this gap increased considerably to as much as 70% in 2006. By 2007 the summer number was 54% greater but this has to be considered in the context of a considerably increased winter and summer population from July 2005 onwards.

2.4 The overall trend in the summer and winter Gypsies/Travellers population since 2001 is shown in Figure 1.

**Figure 1: Gypsies/ Travellers Population – Summer and Winter  
2001 to 2007**



---

<sup>1</sup> This estimate is based on the application of an average household size of 3.3 persons based on data collected for Council/RSL sites (only) and discussed further in the later section on Official Sites.

2.5 The distribution of this population by type of site has also seen considerable change. In 2001 the largest proportion (42%) was to be found on Council sites, followed by private sites (31%) and the fewest were to be found on unauthorised encampments (26%). By 2006 this balance had completely changed and this trend continued into 2007. By the time of this latest Count the largest proportion (48%) were to be found on unauthorised encampments; a reduced proportion were on Council/RSL sites (34%) and on private sites (18%).

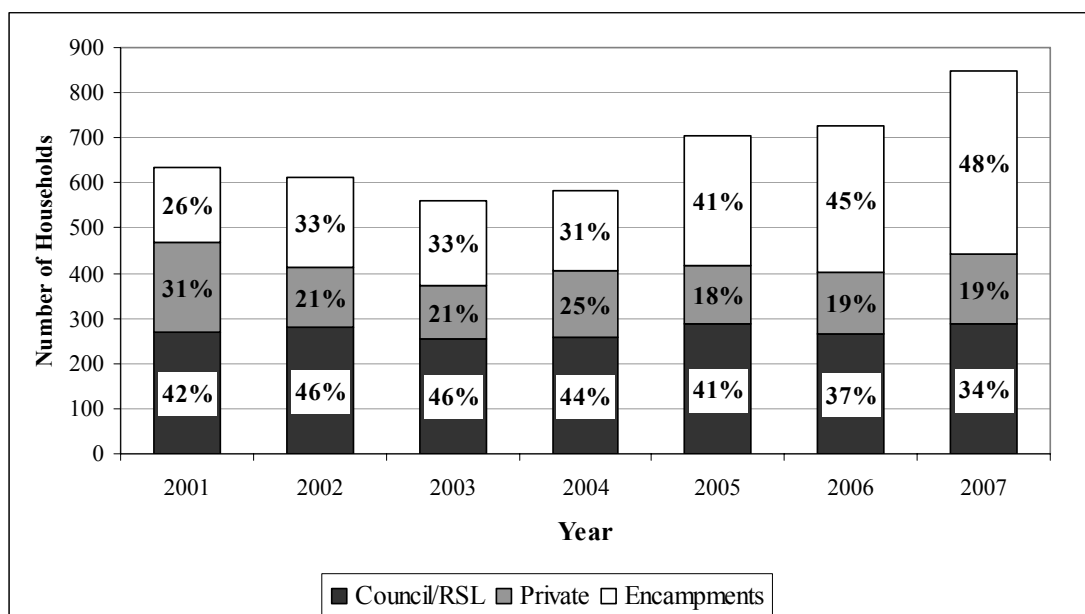
2.6 However looking at the number of households involved (rather than the proportion of the total) it is clear that the number living on Council/RSL sites has remained relatively stable. Indeed there has been almost no change since 2001 from 270 households to 286 households (+5%). This is despite an net reduction in the total number of pitches on such sites over this period. The numbers living on private sites has varied more considerably and while they are down on 2001 levels (-22%) they are actually up on the figures from 2002 onwards.

2.7 It is the unauthorised encampment population that has seen the biggest change. Since 2001 the number of households living on such encampments has increased by over 140% from around 170 households to over 400 households in 2007. This is likely to reflect 2 important trends:

- An increase in the Gypsies/Travellers population visiting Scotland in the summer months
- A reluctance to use, or inability to access, other forms of site based accommodation (official Council/RSL or private sites).

2.8 The changing trend in the use of different types of site among the summer population in Scotland as a whole is illustrated in Figure 2. Table 1 that follows shows the trend by local authority area.

**Figure 2: Summer Population of Gypsies/ Travellers  
July 2001 to July 2007**



**Table 1: Gypsies/Travellers Households by Local Authority Area and Type Of Site  
July 2004 – July 2007**

Local Authority Area	July 2004				July 2005				July 2006				July 2007			
	A	B	C	D	A	B	C	D	A	B	C	D	A	B	C	D
Aberdeen	6	0	3	9	11	0	7	18	8	8	28	44	9	0	52	61
Aberdeenshire	17	0	10	27	20	0	10	30	19	0	7	26	18	6	16	40
Angus	15	15	5	35	11	16	15	42	12	16	0	28	16	0	5	21
Argyll & Bute	10	0	19	29	21	0	2	23	21	0	12	33	23	0	8	31
Clackmannanshire	8	0	0	8	9	0	0	9	4	0	0	4	7	0	0	7
Dumfries & Galloway	9	0	0	9	8	16	16	40	15	7	2	24	20	0	16	36
Dundee	5	0	0	5	13	0	0	13	16	0	13	29	12	0	0	12
East Ayrshire	0	0	5	5	0	1	5	6	0	0	13	13	0	1	6	7
East Dunbartonshire	7	0	0	7	4	0	0	4	2	0	0	2	5	0	0	5
East Renfrewshire	0	16	0	16	0	4	0	4	0	10	0	10	0	0	0	0
East/ Midlothian	10	0	0	10	11	0	10	21	11	0	6	17	3	0	21	24
Edinburgh	15	0	11	26	12	0	10	22	10	0	0	10	19	0	21	40
Eilean Siar	0	0	0	0	0	0	0	0	0	0	0	0	0	0	0	0
Falkirk	10	6	0	16	9	1	0	10	12	0	8	20	11	5	16	32
Fife	34	23	21	78	30	21	32	83	15	20	41	76	26	31	61	118
Glasgow	0	0	0	0	2	0	0	2	2	0	0	2	1	0	2	3
Highland	16	12	33	61	30	12	38	80	22	14	0	36	28	11	18	57
Inverclyde	0	0	0	0	0	0	0	0	0	0	5	5	0	0	3	3
Moray	0	0	2	2	0	0	30	30	0	0	43	43	0	0	35	35
North Ayrshire	9	0	26	35	16	0	28	44	11	0	18	29	14	0	40	54
North Lanarkshire	4	0	0	4	0	0	3	3	0	0	5	5	0	0	17	17
Orkney	0	0	0	0	0	0	0	0	0	0	0	0	0	0	0	0
Perth & Kinross	19	6	5	30	16	0	20	36	18	0	10	28	8	5	9	22
Renfrewshire	0	0	17	17	0	0	4	4	0	0	22	22	0	0	6	6
Scottish Borders	6	18	4	28	3	15	0	18	8	15	0	23	1	10	0	11
Shetland	0	0	0	0	0	0	0	0	0	0	0	0	0	0	0	0
South Ayrshire	7	0	15	22	8	0	6	14	7	3	6	16	9	0	29	38
South Lanarkshire	23	50	0	73	24	43	6	73	23	44	7	74	23	86	0	109
Stirling	6	0	0	6	11	0	38	49	4	0	0	4	7	0	0	7
West Dunbartonshire	15	0	2	17	18	0	0	18	20	0	0	20	19	0	5	24
West Lothian	8	0	0	8	2	0	5	7	6	0	79	85	7	0	21	28
<b>SCOTLAND</b>	<b>259</b>	<b>146</b>	<b>178</b>	<b>583</b>	<b>289</b>	<b>129</b>	<b>285</b>	<b>703</b>	<b>266</b>	<b>137</b>	<b>325</b>	<b>728</b>	<b>286</b>	<b>155</b>	<b>407</b>	<b>848</b>
<i>% of Total</i>	<i>44</i>	<i>25</i>	<i>31</i>	<i>100</i>	<i>41</i>	<i>18</i>	<i>41</i>	<i>100</i>	<i>37</i>	<i>19</i>	<i>44</i>	<i>100</i>	<i>34</i>	<i>18</i>	<i>48</i>	<i>100</i>
<b>Estimated Population</b>	<b>876</b>	<b>492</b>	<b>600</b>	<b>1965</b>	<b>867</b>	<b>387</b>	<b>855</b>	<b>2109</b>	<b>878</b>	<b>452</b>	<b>1073</b>	<b>2402</b>	<b>952</b>	<b>516</b>	<b>1355</b>	<b>2823</b>

**EXPLANATORY NOTE**

- A Households on Council/RSL Sites
- B Estimated households on Private Sites
- C Estimated households on Unauthorised Encampments
- D Total estimated number of Households

2.9 The increase in the summer based population over the last year was experienced across all regions. Proportionately and numerically the greatest increase in number of households was experienced in the South West of Scotland (+65%).

2.10 Over the longer term, the biggest changes in the summer based population have been in Highlands/Islands/Grampian seeing an increase of +110% in the number of households since 2001 and the South West seeing an increase of +71%. West Central Scotland has seen the smallest change in relative terms (+4%). The level of unauthorised encampments has increased significantly across all regions.

2.11 However the reasons behind these changes are not wholly clear. They may be associated with geographical changes in the pattern of employment opportunities, in the pattern of visiting and holidaying or may simply reflect changing opportunities for accessing places to stay (in particular for setting up encampments).

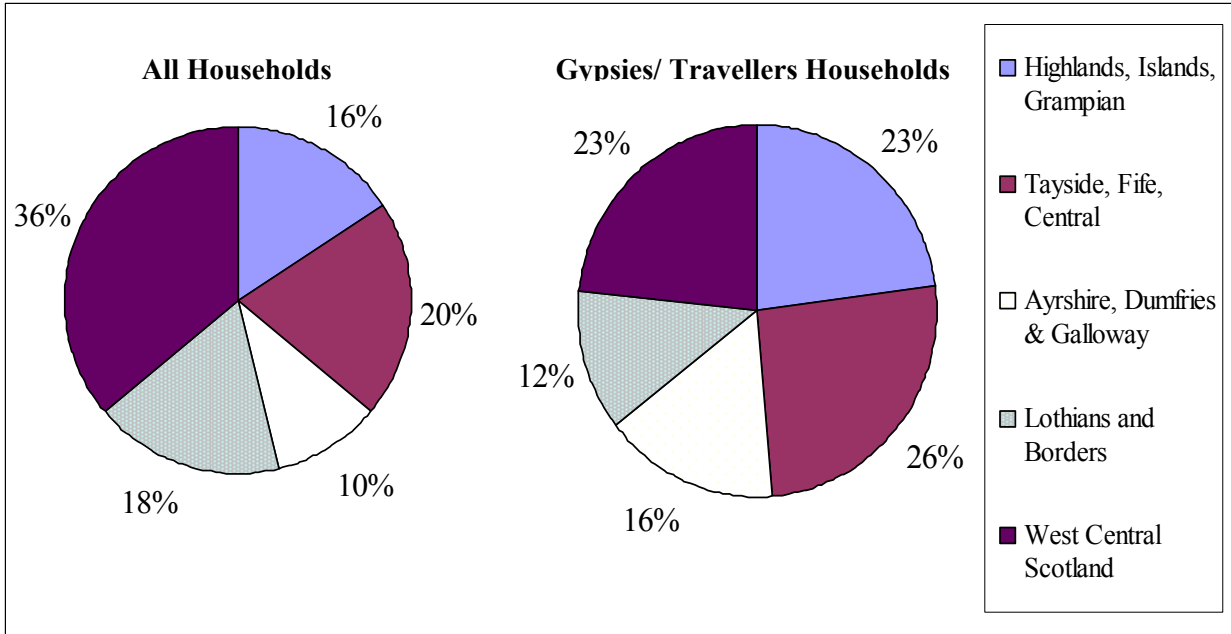
2.12 The level of annual change in the number of Gypsies/Travellers households by region is shown in Table 2 along with the longer term trend since 2001.

**Table 2: Change in Summer (July) Households by Region**

Region	Number of Households		Change 2006-2007	Change 2001-2007
	2006	2007		
Highlands, Islands, Grampian	149	193	+30%	+110%
Tayside, Fife, Central	189	219	+16%	+14%
Ayrshire, Dumfries & Galloway	82	135	+65%	+71%
Lothians and Borders	135	103	-24%	+24%
West Central Scotland	173	198	+14%	+4%
<b>TOTAL</b>	<b>728</b>	<b>848</b>	<b>+16%</b>	<b>+33%</b>

2.13 Looking at the distribution of the summer Gypsies/Travellers population compared to that of the Scottish population as a whole Highlands/Islands/Grampian, Tayside/Fife/Central and Ayrshire/Dumfries/Galloway all account for a higher proportion of Gypsies/Travellers. Lothian/Borders and West Central Scotland on the other hand account for a lower proportion. A comparison is shown in Figure 3.

**Figure 3: Distribution of All Households and Gypsies/ Travellers Households  
July 2007**



2.14 At a local authority area level, the largest Gypsies/Travellers population is to be found in South Lanarkshire and Fife with both areas recording over 100 households living on sites and encampments. These 2 areas account for 27% of all Gypsies/Travellers households living in Scotland at July 2007. As a proportion of the overall population the highest incidence of Gypsies/Travellers is to be found in Moray and North Ayrshire (both 0.09% of all households), followed by Argyll and Bute, South Ayrshire, South Lanarkshire and Fife (each 0.08% of all households).

### **3. COUNCIL/RSL SITES**

#### **Background**

3.1 From the late 1970s through to the early 2000s many of Scotland's local authorities developed purpose built serviced sites for Gypsies/Travellers with the aid of grant assistance from the (then) Scottish Office. These sites were also managed by the local authorities themselves. A total of 37 sites were developed over this period (34 year round and 3 seasonal) although 5 of the year round sites have since closed. These sites closed for a variety of reasons but often had a history of vandalism or low occupancy or association with family feuding/fear of intimidation among Gypsies/Travellers or for a mix of these reasons.

3.2 Such sites are formally laid out with clearly demarcated pitches which are intended for a single household. Very large households may be allocated 2 adjacent pitches on the basis of a single tenancy and there may also be instances of more than one household occupying a single pitch and a single tenancy. Overall such instances tend to be rare. Pitches are usually designed to accommodate a large trailer or static caravan with space for a lorry/van although in some instances a small tourer caravan is also permitted. Each pitch has its own amenity block which contains facilities including showers/baths, toilets and domestic appliances although the type and extent of such facilities tends to vary by site.

3.3 Tenancies of year round sites are unrestricted in length and tenants are permitted leaves of absence for up to 12 weeks to go travelling, visiting, holidaying etc while retaining their tenancy.

3.4 The range of data available on Council/RSL sites and those who live on them is much more extensive than in the case of private sites and unauthorised encampments. This data is largely based on site management records and the knowledge of those who manage such sites.

#### **Provision**

3.5 There are now 32 of these sites across Scotland; 29 are year round sites and 3 are seasonal (open summer only). In 2006, in the Argyll and Bute local authority area, 3 year round sites transferred ownership to a Registered Social Landlord (RSL) – Argyll Community Housing Association (ACHA) - as part of a Council housing stock transfer. This means that overall 29 sites are now owned and managed by Councils and 3 by RSLs.

3.6 While only 5 of the 32 sites were fully tenanted in July 2007, a further 12 were operating at their current operational capacity; together this represents just over half of all sites. The remaining 15 sites had pitches available for let.

3.7 The 32 Council/RSL sites have a total capacity of 508 pitches. 24 of Scotland's 32 local authorities have such sites while the remaining 8 do not. Overall occupancy patterns in July 2007 were as follows:

- 347 pitches (68%) were tenanted – a similar level to July 2006 (70% tenanted)
- 292 pitches (57%) were let and occupied – slightly higher than last year (52%)
- 55 pitches (11%) were let but with tenants on permitted leaves of absence - lower than last year (18%) but similar to the year before (13%)
- 107 pitches (21%) were available for let but untenanted
- 54 pitches (11%) were unavailable for let usually due to ongoing site refurbishment or because pitches are being used for other purposes, notably community facilities often provided in portakabins.

3.8 At local authority area and site level, patterns of occupancy vary considerably. Year round sites in Angus, South Ayrshire, South Lanarkshire (2 sites) and West Dunbartonshire were operating at full operational capacity and were fully tenanted as was the seasonal site in Aberdeenshire. Occupancy rates were also high on year round sites in Argyll and Bute, Dundee, Falkirk, Fife, Highland, North Ayrshire and Perth and Kinross.

3.9 Sites at Glenluce (Dumfries and Galloway), Maryhill (Glasgow), Craigforth (Stirling) and Bathgate (West Lothian) continue to experience low levels of occupancy and have 60% or more of their pitches available for let but untenanted. While the site at Lennoxton (East Dunbartonshire) has almost half of its pitches available to let, it is currently experiencing its highest occupancy level since 2003. Only 2 Council/RSL sites were completely unoccupied – the year round site at Airdrie in North Lanarkshire and the seasonal site at Newtonmore in Highland, the latter having been occupied at the time of the 3 previous summer Counts. The seasonal site at Innerleithen, Scottish Borders also recorded low occupancy this time round with only one of its 10 pitches occupied.

3.10 A detailed breakdown of pitch provision and occupancy on Council/RSL sites by local authority area is shown in Table 3.

**Table 3: Pitch Provision and Occupancy Profile by Local Authority Area  
July 2007**

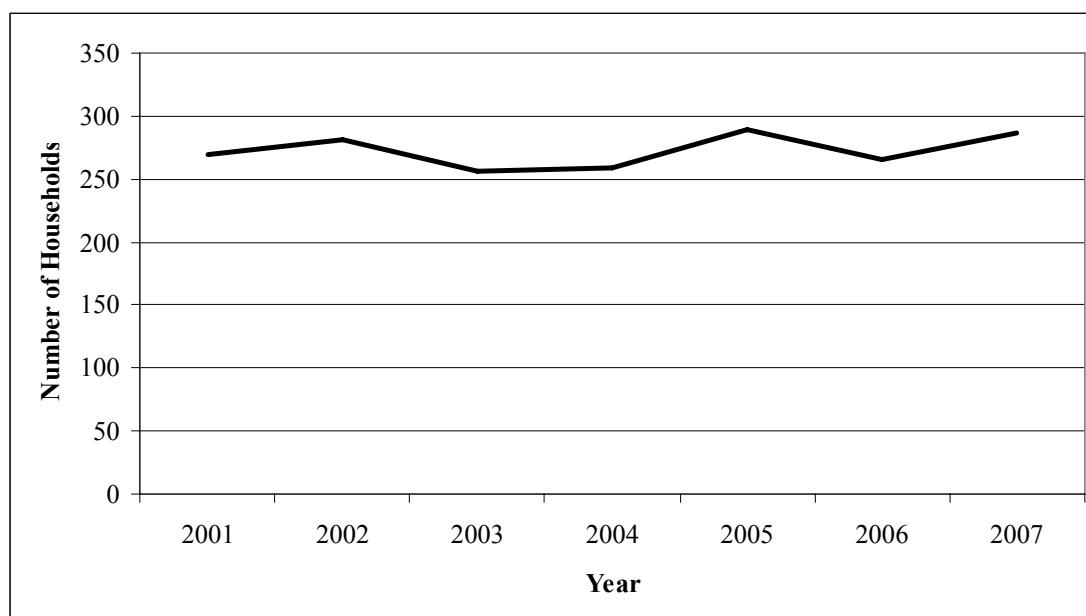
Local Authority Area	Number of Sites	Total Number of Pitches	% Tenanted	% Available for let	% Not available for Let
Aberdeen City	1	30	30%	0%	70%
Aberdeenshire	1	20	100%	0%	0%
Angus	1	18	100%	0%	0%
Argyll and Bute	3	32	88%	6%	6%
Clackmannanshire	1	16	44%	6%	50%
Dumfries & Galloway	2	32	66%	34%	0%
Dundee	1	20	90%	5%	5%
East Ayrshire	0	0	0	0	0
East Dunbartonshire	1	15	33%	47%	20%
East Renfrewshire	0	0	0	0	0
East/ Midlothian	1	20	50%	50%	0%
Edinburgh, City of	1	20	60%	40%	0%
Eilean Siar	0	0	0	0	0
Falkirk	1	15	87%	0%	13%
Fife	3	50	90%	8%	2%
Glasgow	1	10	10%	60%	30%
Highland	4	54	74%	13%	13%
Inverclyde	0	0	0	0	0
Moray	0	0	0	0	0
North Ayrshire	1	16	88%	0%	13%
North Lanarkshire	1	16	0%	100%	0%
Orkney	0	0	0	0	0
Perth & Kinross	1	20	80%	0%	20%
Renfrewshire	0	0	0	0	0
Scottish Borders	1	10	10%	90%	0%
Shetland	0	0	0	0	0
South Ayrshire	1	8	100%	0%	0%
South Lanarkshire	2	27	100%	1%	1%
Stirling	1	18	39%	61%	0%
West Dunbartonshire	1	20	100%	0%	0%
West Lothian	1	21	33%	67%	0%
<b>SCOTLAND</b>	<b>32</b>	<b>508</b>	<b>68%</b>	<b>21%</b>	<b>11%</b>

Note: East Lothian and Midlothian Councils submit a joint return for the purposes of the Count.

## Population

3.11 In July 2007 there were 286 households living on the 292 let and occupied pitches on Council/RSL sites. The number of households present is up 20 (+8%) on July 2006 figures in part reflecting that a higher proportion of households were temporarily absent from their site at the same point last year. As noted earlier there has been little change in the number of households recorded on such sites since 2001 as shown in Figure 4.

**Figure 4: Number of Households on Council/RSL Sites (Summer)  
July 2001 to July 2007**



3.12 These 286 households represented an estimated total population of 952 people of which 51% were male and 49% female. This is slightly different from the wider Scottish gender profile where females outnumber males.

3.13 Average household size was 3.3 persons which compares with only 2.2 persons in the wider population. However this varied considerably by site and ranged from less than 2 persons to over 6 persons. The average of 3.3 has been applied to the number of caravans on private sites and unauthorised encampments to help estimate the total Gypsies/Travellers population living on sites and encampments in Scotland.

3.14 As much as 38% of the population on Council/RSL sites was under 17 years of age compared to only 19% in the wider Scottish population. The proportion of under 5s and 5-10s is particularly high, less so in the case of 11-16s. Age structure varies considerably by site. For example among the larger occupied sites at the time of the Count (10 or more households), Ledaig (Argyll and Bute) and Tealing (Dundee City) had the highest proportion of under 10s (over 40% in each case) while Montrose (Angus) and Lochgilphead (Argyll and Bute) had the highest proportions of pensionable age (18 and 17%) respectively).

3.15 Table 4 gives a comparison of some key demographic characteristics for the Council/RSL site based Gypsies/Travellers population and the wider Scottish population.

**Table 4: Demographic Comparison  
Gypsies/Travellers living on Council/RSL Sites and Scotland as a whole**

	Gypsies/Travellers		Scotland
	Number	%	%
<b>GENDER</b>			
Male	486	51%	48%
Female	466	49%	52%
<b>AGE STRUCTURE</b>			
0-4 years	126	13%	5%
5-10 years	141	15%	7%
11-16 years	92	10%	7%
17-59/64 years (M/F)	535	56%	62%
Over 60/65 years (F/M)	58	6%	19%
<b>POPULATION BASE</b>	952		5,116,900
<b>AVERAGE HOUSEHOLD SIZE</b>			
	3.3		2.2

Source: Twice Yearly Count July 2007; General Register Office 2006 Mid Year Estimate and 2006 Household Estimates

### **Change, Movement and Demand**

3.16 The level of tenancy change on Council/RSL sites is currently running at 15% per year. This is not too different from the turnover experienced in flats in many parts of urban Scotland. However not all tenancy changes are as a result of pitch turnover/households moving; such changes can sometimes involve a change from a single to a joint tenancy e.g. transferring between a mother to mother and daughter. Tenancy change across Scotland would now appear to be predominantly associated with the refurbishment of Council/RSL sites, movement between Council/RSL sites and movement on and off seasonal sites..

3.17 Due to these factors it is difficult from the data to establish the current extent of travelling among Gypsies/Travellers although recent research has shown this is much reduced compared to the past<sup>2</sup>. While only 16% of tenants were away at the time of the July 2007 Count, 49% had been away from their pitch in the 6 months previously. It is known that in some cases such absences are as a result of ongoing site refurbishment e.g. at Perth (Perth and Kinross).

3.18 This year's data would suggest that tenants in East/Midlothian, Fife and Highland are more likely to travel than tenants in other areas. In these cases over 4 in 5 tenants had had permitted leaves of absence over the previous 6 months.

<sup>2</sup> An Assessment of the Housing Needs and Aspirations of Gypsies/Travellers in Tayside, Heriot-Watt University, Communities Scotland, 2004; An Accommodation Needs Assessment of Gypsies/Travellers in West Central Scotland, Craigforth, 2007.

3.19 Data on length of stay on Council/RSL sites has only recently been introduced to the Count therefore a time series is not available. Again evidence from research, and other local knowledge e.g. among site managers, suggests that in some cases Gypsies/Travellers have become quite settled on some of these sites. At July 2007 the length of tenancy profile was almost split equally between those whose tenancies had been for under 1 year (36%), between 1 and 5 years (32%) and for over 5 years (32%). This profile suggests slightly more movement than a year ago when only 31% fell into the under 1 year category.

3.20 In the case of sites in Angus, Perth and Kinross, South Ayrshire and West Dunbartonshire over 3 in 4 tenants (over 75%) have been there for over 5 years making these the most settled sites of all. Other areas with established populations on Council/RSL sites include Edinburgh, Fife, North Ayrshire and South Lanarkshire (2 sites). A detailed breakdown of tenancy profile by local authority area is shown in Table 5.

**Table 5: Length of Tenancy Profile by Local Authority Area  
July 2007**

<b>Local Authority Area</b>	<b>Total Tenancies</b>	<b>Under 1 year</b>	<b>1 year to 5 years</b>	<b>5 years and above</b>
Aberdeen City	9	33%	33%	33%
Aberdeenshire	20	100%	0%	0%
Angus	18	0%	17%	83%
Argyll and Bute	28	21%	46%	32%
Clackmannanshire	7	86%	0%	14%
Dumfries & Galloway	21	38%	57%	5%
Dundee	18	22%	72%	6%
East Dunbartonshire	5	80%	20%	0%
East/ Midlothian	10	40%	50%	10%
Edinburgh, City of	12	17%	42%	42%
Falkirk	13	46%	54%	0%
Fife	45	33%	29%	38%
Glasgow	1	100%	0%	0%
Highland	40	45%	40%	15%
North Ayrshire	14	50%	14%	36%
North Lanarkshire	0	0	0	0
Perth & Kinross	16	0%	13%	88%
Scottish Borders	1	100%	0%	0%
South Ayrshire	8	0%	25%	75%
South Lanarkshire	27	22%	33%	44%
Stirling	7	86%	0%	14%
West Dunbartonshire	20	0%	20%	80%
West Lothian	7	86%	14%	0%
<b>SCOTLAND</b>	<b>347</b>	<b>35%</b>	<b>32%</b>	<b>33%</b>

Note: East Lothian and Midlothian Councils submit a joint return for the purposes of the Count.

3.21 There are currently 127 households recorded on waiting lists for Council/RSL sites, which represents 25% of current pitch provision. However some households may be registered on more than one list, therefore there will be some degree of overlap. The most popular areas are, by far, South Lanarkshire and Fife while there is also demand for sites in Aberdeen, Angus, Dumfries and Galloway and Edinburgh.

3.22 A total of 96 households were turned away from various Council/RSL sites within the last 6 months. This is likely to include those who have been turned away from more than one site during this period and therefore there will again be an element of overlap .

3.23 In West Dunbartonshire the number of households turned away exceeds the number of pitches, although the number on the waiting list is relatively small. This is a popular and settled site (Dennystoun Forge) populated by Scottish Travellers and recent research has highlighted that there is an element of unauthorised encampments associated with overspill on this site at Dumbarton<sup>3</sup>. It may also be the case that the size of the waiting list is underestimating the true level of demand.

3.24 Other areas where significant numbers of Gypsies/Travellers have been turned away include Aberdeen, Edinburgh, North Ayrshire and South Lanarkshire.

---

<sup>3</sup> An Accommodation Needs Assessment of Gypsies/Travellers in Scotland, Craigforth, 2007

## **4. PRIVATE SITES**

### **Background**

4.1 Privately owned sites are used by Gypsies/Travellers who either do not want to, or are unable to, access Council/RSL sites. They include year round sites and those used only on a seasonal basis.

4.2 Year round sites, which are often established by Gypsies/Travellers themselves, usually cater for specific families or extended families and this tends to mean that they accommodate groups of people from largely the same ethnicity (e.g. Romanies, Scottish Travellers etc).

4.3 Private seasonal sites can either be specifically for Gypsies/Travellers (often provided and/or managed by Gypsies/Travellers) or alternatively are commercial holiday/touring sites which are known to accept Gypsies/Travellers. Such sites are largely used on a transit basis by Gypsies/Travellers travelling through or visiting an area. All but one of the private seasonal sites recorded by the Count operate in the summer months only, although the length of the operating summer season is known to vary.

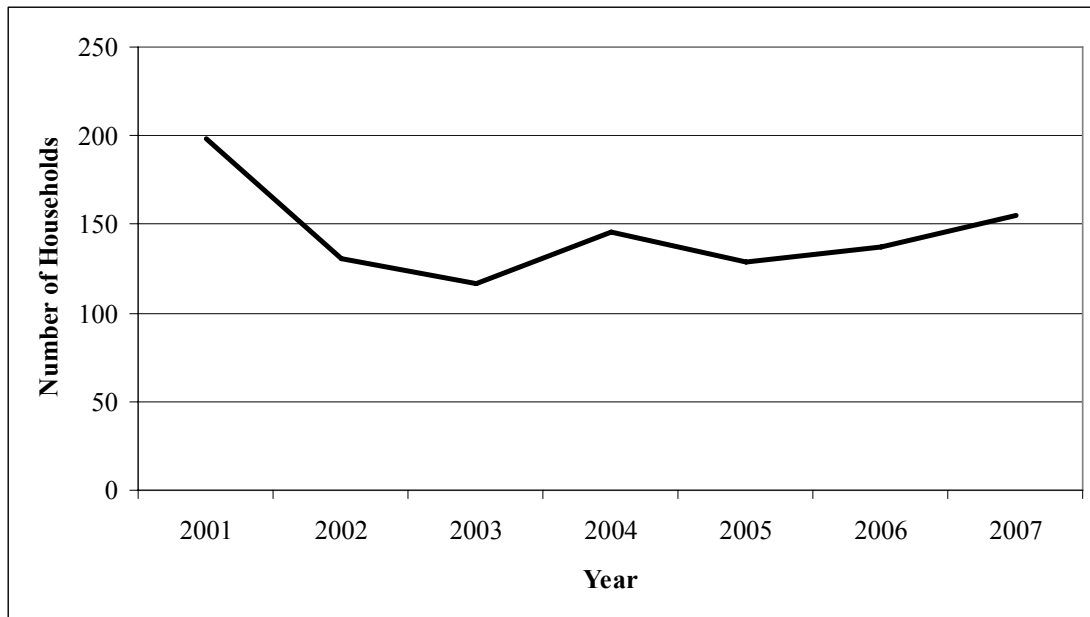
4.4 Owners of private sites are under no obligation to take part in the Twice Yearly Count; owners of holiday/touring sites can be reluctant to disclose that they accept Gypsies/Travellers. Accurate data on the number of households living on private sites and details of the sites themselves can therefore be difficult to come by. The information gathered for the Count is based on the best local intelligence held among local authority officers working most closely with Gypsies/Travellers.

4.5 In the case of private sites, estimates of the number of households for Count purposes are based on the assumption that one caravan is the equivalent of one household. While experience from Council/RSL sites suggests this will not be strictly true in all cases, it will be in the vast majority. It is therefore a useful rule of thumb to apply when estimating the total Gypsies/Travellers population.

### **Population and Provision**

4.6 In July 2007 there were an estimated 155 Gypsies/Travellers households on private sites accounting for 18% of all households recorded nationally. This is the highest number recorded since the year 2001 (when it almost reached 200 households) and is up by 13% since last year. The trend in numbers living on private sites in summer months from 2001 onwards is shown in Figure 5.

**Figure 5: Number of Households on Private Sites (Summer)  
July 2001 to July 2007**



4.7 One local authority area, South Lanarkshire, accounts for all of this annual increase (and more); here the number living on private sites almost doubled from 44 to 86 households. This area now accounts for 55% of all Gypsies/Travellers households known to be living on private sites in Scotland.

4.8 The majority (75%) of those living on private sites had been doing so on a long stay basis (stays of over 4 weeks) while a minority (25%) were there on a short stay basis.

4.9 A detailed breakdown of the distribution of those living on private sites by local authority area is in Table 6.

**Table 6: Households Living on Private Sites by Local Authority Area  
July 2007**

Local Authority Area	Short Stay	Long Stay	TOTAL
Aberdeenshire	6	0	6
Dumfries and Galloway	0	0	0
East Ayrshire	1	0	1
Falkirk	0	5	5
Fife	0	31	31
Highland	9	2	11
Perth & Kinross	0	5	5
Scottish Borders	0	10	10
South Lanarkshire	22	64	86
<b>TOTAL</b>	<b>38</b>	<b>117</b>	<b>155</b>

4.10 These households were living on 18 sites across 9 local authority areas. The number of sites recorded by the Count has fluctuated around 20 sites in most years since 2001. There has been one particularly important change since last year and indeed all previous Counts. A previously recorded year round site in East Renfrewshire (capacity of 16 pitches in total) has now been confirmed as accommodating a Show Travellers population and has therefore been excluded from the Count for the first time. The distribution of year round and seasonal sites is shown in Table 7.

**Table 7: Private Sites at July 2007**

Local Authority Area	Number of Sites			TOTAL
	All Year	Seasonal		
		Summer Only	Winter Only	
Aberdeenshire	0	1	0	1
Dumfries and Galloway	0	1	0	1
East Ayrshire	0	1	1	2
Falkirk	2	0	0	2
Fife	3	0	0	3
Highland	0	4	0	4
Perth & Kinross	1	0	0	1
Scottish Borders	1	0	0	1
South Lanarkshire	3	0	0	3
<b>TOTAL</b>	<b>10</b>	<b>7</b>	<b>1</b>	<b>18</b>

4.11 Sites were split equally between those specifically intended for Gypsies/Travellers and holiday sites as they were in July 2006. Gypsies./Travellers sites tend to be long stay rather than short stay sites with all except one in East Ayrshire being found to be in continuous use.

## **5. UNAUTHORISED ENCAMPMENTS**

### **Background**

5.1 Unauthorised encampments are set up by Gypsies/Travellers usually on a short term basis when travelling through or visiting an area, although they can also arise where families are having difficulty finding somewhere to settle in an area e.g. on a Council/RSL or private site or do not want to stay on such sites. In many areas such encampments are the only option available (where no available sites/pitches exist or where they are refused entry to private/holiday sites); for other Gypsies/Travellers they are the only option they will consider as part of their way of life.

5.2 The summer months are traditionally the most mobile for both travellers based in Scotland and seasonal incomers from England, Ireland and Wales, and occasionally from further afield. While much more a summer than winter phenomenon, the level of unauthorised encampments in Scotland has been increasing significantly in both seasons, particularly in the last 3-4 years.

5.3 Locations used include wasteland, industrial sites, open space areas, laybys, car parks and more secluded spots away from settled populations e.g. loch shores, river banks, remote glens etc. Families often follow an annual pattern of favoured locations, stopping periodically before moving on of their own accord or as a result of a court order being raised by the landowner.

5.4 As in the case of private sites, accurate data on unauthorised encampments is difficult to come by. For the purposes of the Count estimates are based on a count of caravans on known sites within an area. Again estimates of the number of households are based on the assumption that one caravan is the equivalent of one household.

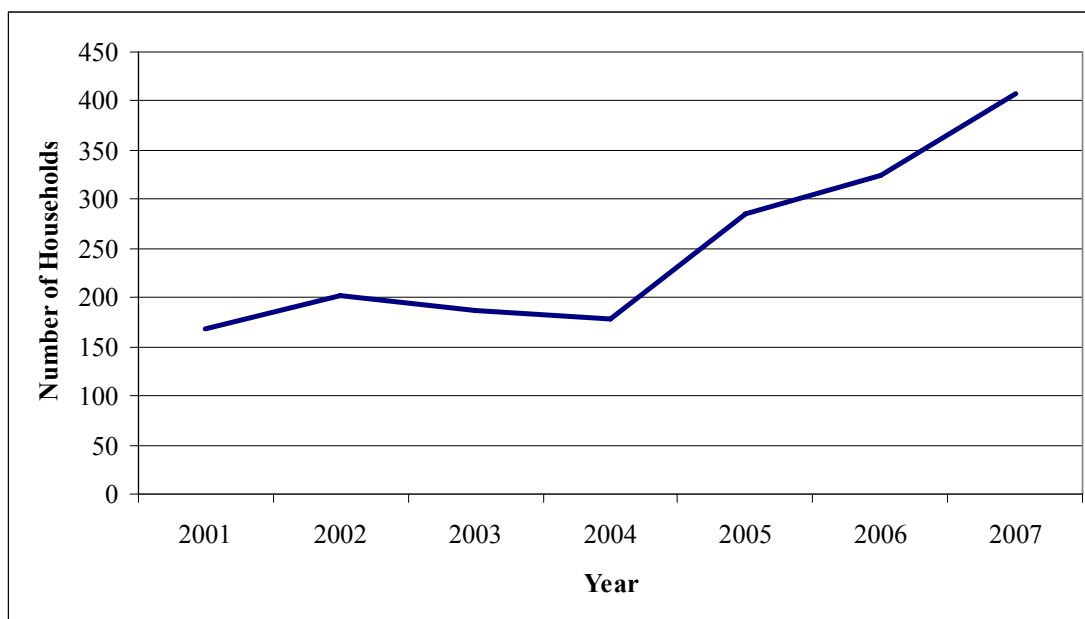
5.5 Much more so than in the case of Council/RSL and private sites, the 'snapshot' nature of the Count means that it might not accurately represent the typical level of activity in a local area. Encampments can also be difficult to find and are not always known of by local authority officers, as Gypsies/Travellers often set up encampments in remote locations. Other agencies such as the Police are also a valuable source of information on encampment activity.

### **Population and Encampment Activity**

5.6 In July 2007 there were an estimated 407 households living in unauthorised encampments representing 48% of the total number of Gypsies/Travellers identified. This is by far the largest number of households recorded on such encampments since Counts began (1998). From 2001 through to 2004 the number of encampments remained relatively stable but significant increases have been seen in more recent years. Most of the increase in the total number of Gypsies/Travellers households between July 2006 and July 2007 was accounted for by those living on encampments.

5.7 The year on year trend in the number living on unauthorised encampments from 2001 onwards is shown in Figure 6.

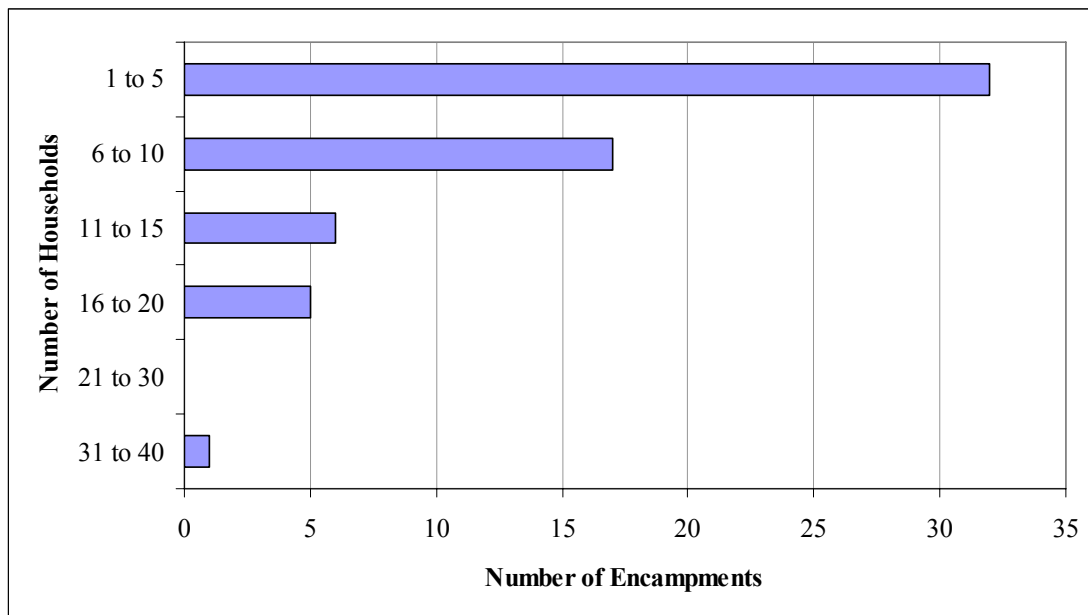
**Figure 6: Number of Households on Unauthorised Encampments (Summer)  
July 2001 to July 2007**



5.8 Twenty eight of Scotland’s 32 local authorities report periodic experience of unauthorised encampments by Gypsies/Travellers in their area. On the mainland only East Renfrewshire and East Dunbartonshire report no experience, along with the island authorities of Eilean Siar and Shetland. A total of 212 locations are identified by local authorities as being used by Gypsies/Travellers. This represents a significant increase in the number of locations recorded in previous years (up by 37% on 2006 and up by 49% on 2005). In almost half the cases recorded this year almost half are used only ‘rarely’ while in just over half they are either used ‘occasionally’ or ‘regularly’.

5.9 At the time of this Count 21 local authorities reported the presence of Gypsies/Travellers on encampments on a total of 61 sites. These ranged in size from one caravan through to 36 caravans; the latter being the only case of an encampment over 20 caravans. The average size was 7 caravans, although over a half of all encampments had 5 or fewer vans, with 2 and 3 caravans being the most common sizes overall. The size distribution of encampments is illustrated in Figure 7.

**Figure 7: Size of Unauthorised Encampments  
July 2007**



5.10 Length of occupancy on encampments at the time of the Count was variable; on 23% of sites Gypsies/Travellers had been there for less than a week, on 39% for one or 2 weeks and on 36% of sites for a longer period.

5.11 The largest number of households in encampments were found in Fife (61) and Aberdeen (52). These 2 authorities accounted for 28% of the Scotland total. They were followed in size by North Ayrshire (40), Moray (35) and South Ayrshire (29); collectively these account for another 26%. While West Lothian recorded 21 caravans across 3 sites this time round this was much reduced from the exceptional circumstances it experienced in July 2006 when 79 caravans were counted across 7 sites and this single authority accounted for 24% of the national total of those living on encampments.

5.12 Table 8 provides a detailed breakdown by local authority area of the estimated number of caravans on unauthorised encampments recorded at July 2007 as well as the 3 previous Counts. Over this longer time period the local authority areas experiencing the greatest encampment activity are (in order) Fife, Moray, North Ayrshire, West Lothian and Aberdeen City.

**Table 8: Number of Households on Unauthorised Encampments (Summer)  
July 2004 to July 2007**

<b>Local Authority Area</b>	<b>2004</b>	<b>2005</b>	<b>2006</b>	<b>2007</b>
Aberdeen City	3	7	28	52
Aberdeenshire	10	10	7	16
Angus	5	15	0	5
Argyll & Bute	19	2	12	8
Clackmannanshire	0	0	0	0
Dumfries & Galloway	0	16	2	16
Dundee City	0	0	13	0
East Ayrshire	5	5	13	6
East Dunbartonshire	0	0	0	0
East/ Midlothian	0	10	6	21
East Renfrewshire	0	0	0	0
Edinburgh, City of	11	10	0	21
Eilean Siar	0	0	0	0
Falkirk	0	0	8	16
Fife	21	32	41	61
Glasgow	0	0	0	2
Highland	33	38	0	18
Inverclyde	0	0	5	3
Moray	2	30	43	35
North Ayrshire	26	28	18	40
North Lanarkshire	0	3	5	17
Orkney	0	0	0	0
Perth & Kinross	5	20	10	9
Renfrewshire	17	4	22	6
Scottish Borders	4	0	?	0
South Ayrshire	15	6	6	29
South Lanarkshire	0	6	7	0
Shetland	0	0	0	0
Stirling	0	38	0	0
West Dunbartonshire	2	0	0	5
West Lothian	0	5	79	21
<b>TOTAL</b>	<b>178</b>	<b>285</b>	<b>325</b>	<b>407</b>

Note: East Lothian and Midlothian Councils submit a joint return for the purposes of the Count. The encampments occupied at the time of the July 2007 Count were in Midlothian.