

Statistical Bulletin

Housing Series

HSG/2007/6

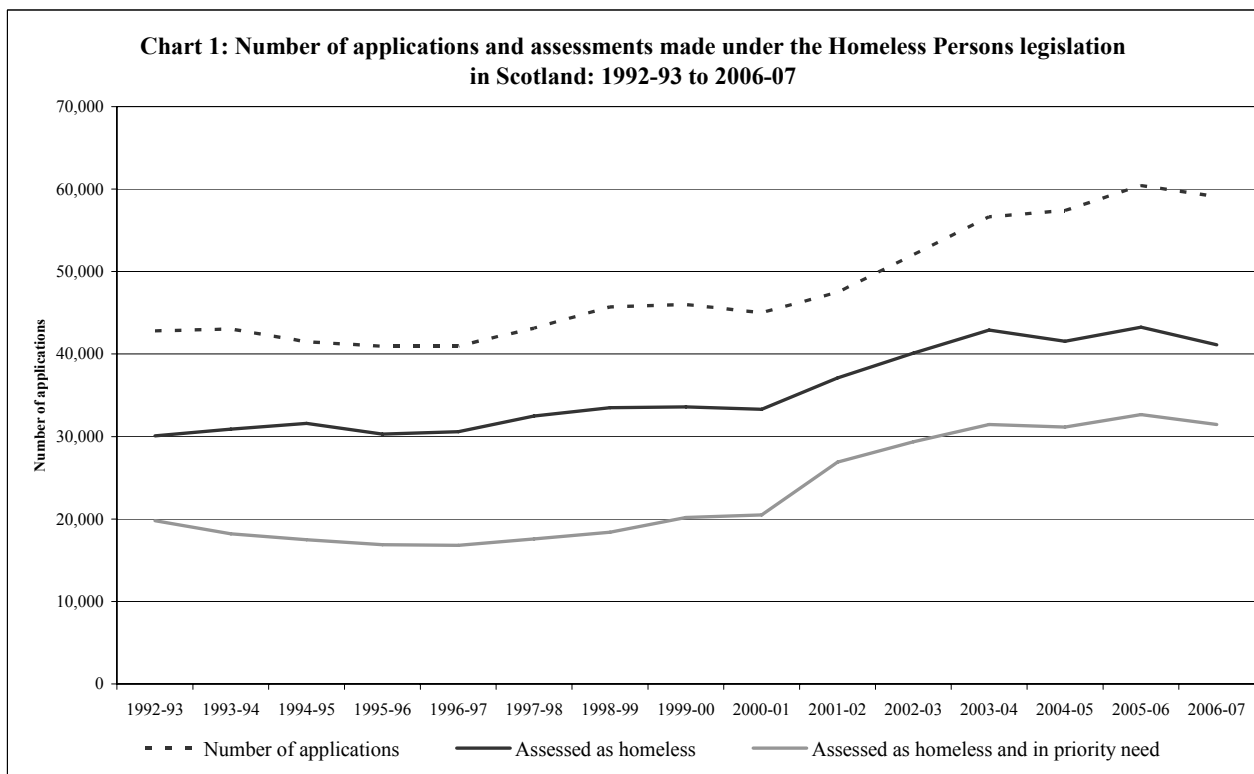
Published October 2007

Price £2

Operation of the Homeless Persons legislation in Scotland: national and local authority analyses 2006-07

1. INTRODUCTION

1.1 This bulletin presents statistics on applications made to Scottish local authorities for assistance under the Homeless Persons legislation from the mid-90s to 2006-07. The number of applications, together with detailed analyses of how local authorities have assessed and dealt with cases, is provided at both national and local authority level, including data on households in temporary accommodation.



Note: Assessment figures exclude cases which have not been assessed by the end of the period. For applications made in 2006-07, there were some 2,000 cases which had not been assessed by the end of the period (this may include some cases where contact has been lost). Assessment figures for 2006-07 are therefore provisional.

Context

1.2 In interpreting the statistics and analyses in this bulletin it is important to bear in mind that the information is derived from councils' administration of homelessness legislation. Trends can be affected by legislative changes, changes in interpretation of legislation or guidance and by changes in local authority recording practice. Where these have been identified these are highlighted in the description of the main trends.

1.3 In 2001, the Scottish Parliament passed legislation which placed additional duties on councils to provide a minimum of temporary accommodation, advice and assistance to all applicants assessed as homeless. In particular, from September 2002, councils have been required to provide temporary accommodation, advice and assistance to



non-priority applicants who in the past would have received advice and assistance only. This has had a noticeable impact on applications, which has been reflected in changing assessments and outcomes for homeless people. Some tables in this bulletin therefore present time series data from 2002-03 onwards in order that this impact can be tracked.

1.4 The Homelessness Etc (Scotland) Act 2003 aims to ensure that by 2012 everyone assessed as being unintentionally homeless is entitled to permanent accommodation. In the homelessness statistics we would generally expect to see progress towards this commitment reflected in increasing proportions of those applicants who are homeless assessed as also in priority need, and reducing proportions assessed as non priority.

1.5 The Homeless Persons (Unsuitable Accommodation) (Scotland) Order came into force in December 2004. This Order requires councils to ensure that households with children or pregnant women are not placed in unsuitable temporary accommodation, unless exceptional circumstances apply. Changes in the data collection to monitor the implementation of the Order are described in the notes section before the tables.

CONTENTS

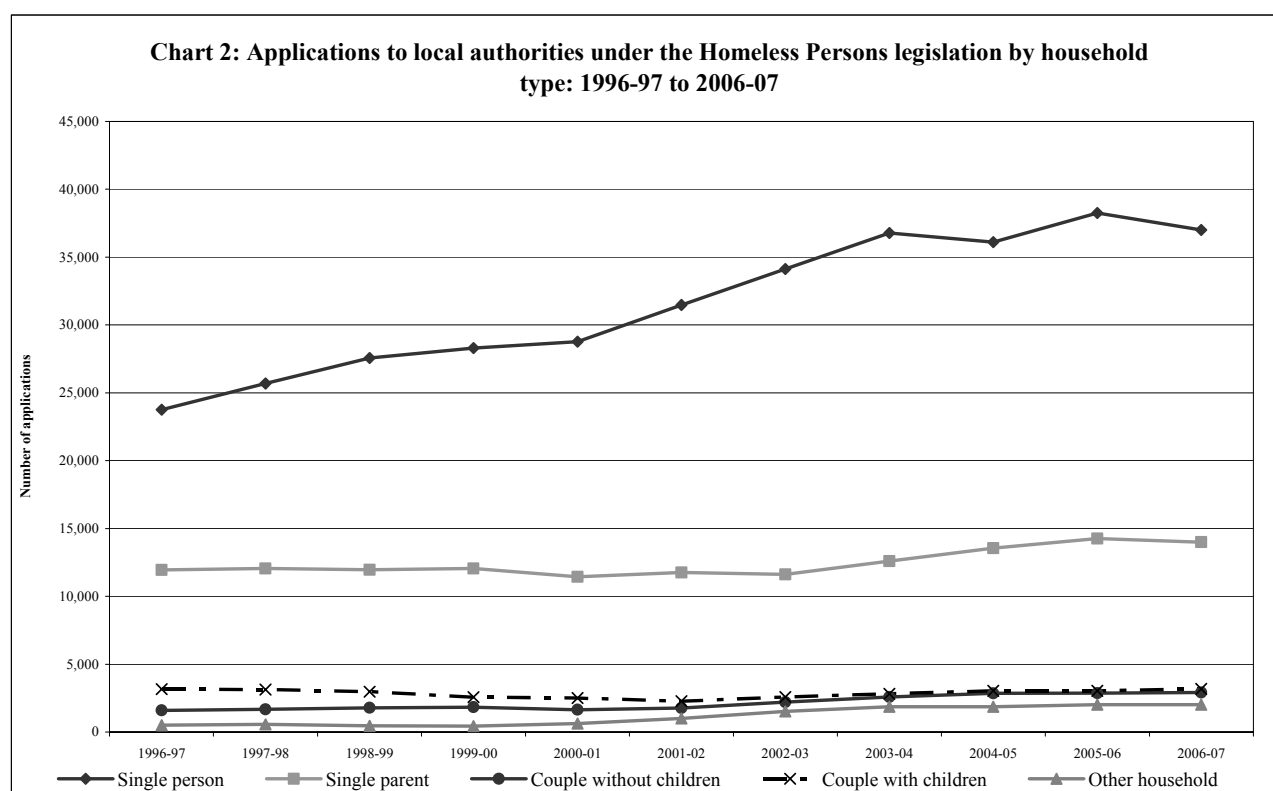
	Page Number
1. Introduction	1
2. Main points	4
3. Summary of current legislation	8
4. Notes on tables	10
Applications and applicant households.....	11
Number of applications to local authorities under the Homeless Persons legislation: 1992-93 to 2006-07	11
Applications by assessment and household type: 1996-97 to 2006-07	12
Number of applications under the Homeless Persons legislation by local authority: 1996-97 to 2006-07	14
Number of applications made by households within 12 months by household type: 2006-07	14
Applications reassessed as homeless/potentially homeless within 12 months of previous case being closed:	
Scotland and local authority level	15
Number of individual households applying by local authority: 2006-07	16
Households applying by local authority and household type: 2006-07	17
Applications by ethnicity and deprivation category: 2006-07	18
Main reason for applying: 2006-07	19
Average number of applications per month where a household member reported sleeping rough the night before applying for assistance by local authority: 2002-03 to 2006-07	20
Local authority assessment.....	21
Local authority assessment decision: 2002-03 to 2006-07	21
Assessment decision by household type: 2006-07	21
Assessment decision by presence of children in household and age of main applicant: 2006-07	22
Households assessed as homeless/in priority need by local authority: 2006-07	23
Applications assessed as potentially homeless	24
Applications assessed as potentially homeless by local authority: 2006-07	24
Action taken by local authorities	25
Local authority action by assessment decision: 2006-07	25
Local authority action by assessment decision and household type: 2006-07	26
Local authority action ¹ by assessment decision and local authority area: 2006-07	27
Length of time between application and last action by assessment decision: 2006-07	28
Households in temporary accommodation	29
Households in temporary accommodation by accommodation type as at 31 March: 1995 to 2007	29
Households with children by accommodation type as at 31 March: 2002 to 2007	29
Households with dependent children or pregnant women by accommodation type and local authority: as at 31 March 2007	30
Households with children in temporary accommodation by local authority area: as at 31 March 2006 to 31 March 2007	31
Breaches of Unsuitable Accommodation Order by local authority area as at the end of the quarter: 2005 to 2007	32
Housing outcomes.....	33
Housing outcome by assessment decision and household type: 2006-07	33
Housing outcome by assessment decision and local authority area: 2006-07	34
Supplementary tables.....	35
Detailed reason for applying: 2006-07	35
Individuals in households by gender and age: 2006-07	35
Household type and characteristics of main applicant: 2006-07	36
5. Notes and definitions	37
Contact information and other recent Scottish Government statistical publications on housing	Back cover

2. MAIN POINTS

Applications and applicant households

2.1 The number of applications to councils for assistance each year under the homelessness legislation which had remained at between 40,000 and 45,000 per year in the mid to late 1990s increased rapidly from 2000-01 to a high point of about 60,500 in 2005-06. The most recent figures indicate that this rise is levelling out with 59,096 applications recorded for 2006-07 (Chart 1 and Table 1), representing a drop of 2% over the previous year. This is consistent with data from previous years which have shown a slowing down of the rate of increase since 2003-04. Changes in duties to provide temporary accommodation to all those assessed as homeless and the expectation that higher proportions of applicants are likely to be assessed as priority need in order to meet the 2012 commitment are likely to have encouraged applications from households who previously would have received advice and assistance only.

2.2 Since 2000-01, almost all of the increase in applications has been from single person households, particularly in the period to 2003-04 (Chart 2 and Table 2). The legislative changes are likely to have been a major driver of this increase as single applicants have benefited most from the legislative changes. Some of the increase in numbers of single applicants may also reflect wider social change. Household estimates and projections show that the total number of single person households is increasing.



2.3 Out of the 56,275 households which applied in 2006-07, 62% were single person households and a further 24% were single parent households (Table 7). Households from areas with higher levels of deprivation were also more likely to apply (Table 8).

2.4 Nine per cent of households applying in 2006-07 applied more than once in a 12-month period, with nearly 80% of those being single person households (Table 4).

2.5 Repeat applications are also reported as part of the Accounts Commission Statutory Performance Indicators: using this definition, nearly 8% of applications assessed as homeless or potentially homeless during 2006-07 had been re-assessed within a 12 month period. This proportion has fallen consistently from just over 9% in 2003-04 (Table 5).

2.6 The main reasons given for applying as homeless were loss of accommodation with relatives or friends (37%) and disputes within the household (23%). Single people and couples without children were more likely to give the former reason, while nearly 40% of single parent households gave disputes within the household as the main reason (Table 9).

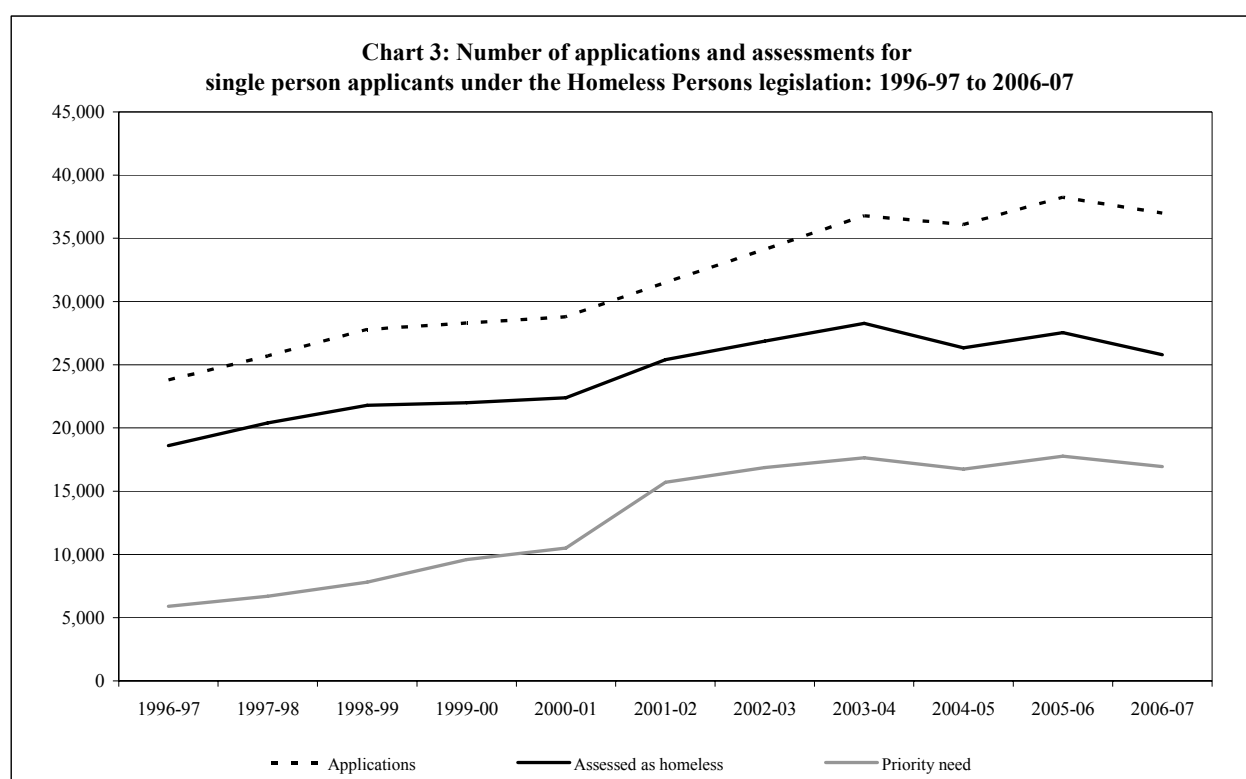
2.7 Applications where a member of the household reported sleeping rough the night before applying for assistance are the object of performance monitoring in relation to one of the outcomes set by the Homelessness Monitoring Group (see section 3.7). In 2006-07, 7% of applications included a member who reported sleeping rough the night before applying for assistance. This proportion has been dropping steadily over the past four years from 10% in 2002-03. The average number of applicants per month who reported sleeping rough the night before applying has fallen by 27% over the past four years, from about 440 per month in 2002-03 to about 320 per month in 2006-07 (Table 10).

Local authority assessment

2.8 The proportion of applications assessed as priority need has increased rapidly since the late 90s rapidly to 73% of those assessed as homeless by 2001-02, and more slowly to 77% in 2006-07. (Table 1 and Chart 1).

2.9 Assessment patterns vary by local authority: for households assessed as homeless in 2006-07, the proportion in priority need ranged from 90% for West Dunbartonshire, to 54% for Moray (Table 14).

2.10 The increase in priority need assessments had earlier been particularly marked among applications from single-person households, although the trend seems to have levelled out in more recent years (Chart 3 and Table 2).



Note: Assessment figures for 2006-07 exclude about 1,300 cases which had not been assessed by the end of the period and are therefore provisional.

Action taken by local authorities

2.11 There were 56,570 applications closed by local authorities during 2006-07. Out of the 24,837 assessed as in priority need, 73% were offered permanent accommodation and 10% were offered temporary accommodation. This represents a marked increase over 2002-03 where 59% of applications assessed as priority need were offered permanent accommodation, although the rate of increase has levelled out since 2004-05 (Table 18).

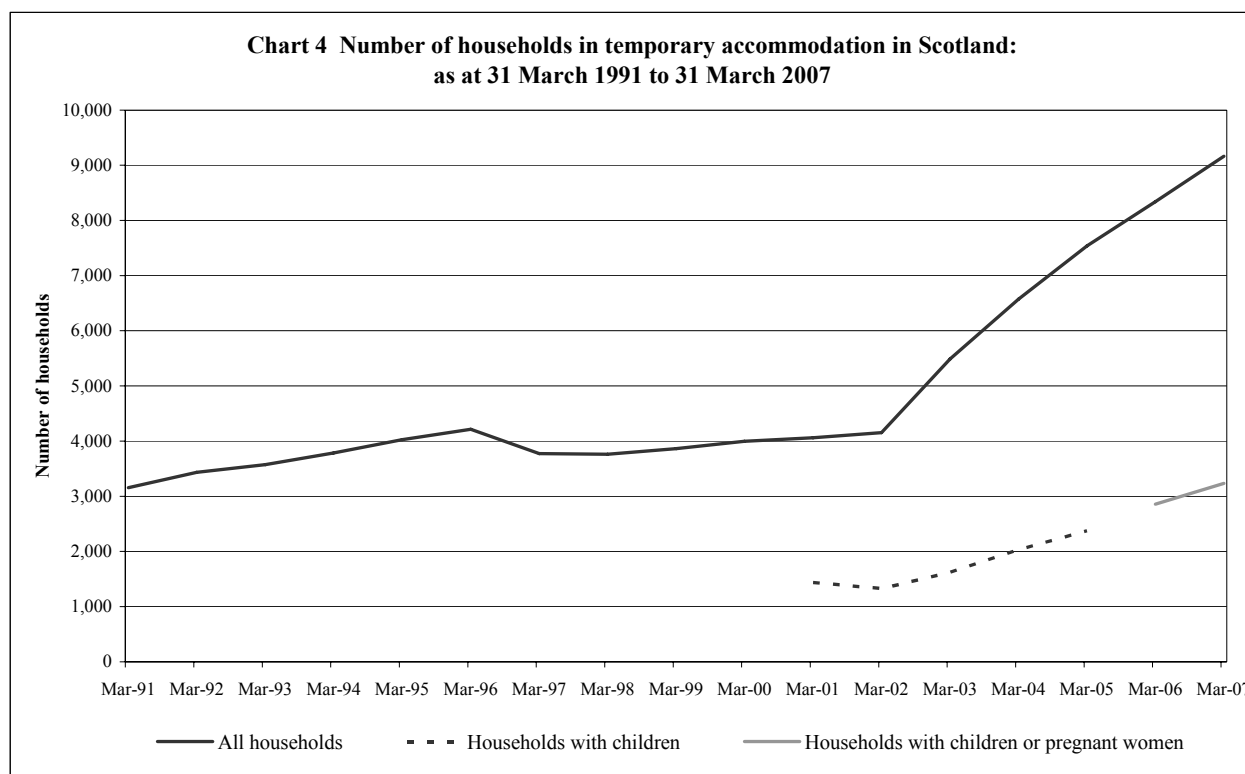
2.12 Of the 8,246 assessed as homeless and not in priority need, 31% were offered temporary accommodation and 12% permanent accommodation. Among the 4,429 assessed as not homeless, 4% were offered permanent accommodation and 8% were offered temporary accommodation (Table 18).

2.13 Of those applicant households assessed as potentially homeless, about two-thirds did not go on to become homeless prior to the local authority discharging its duty (Table 15).

Households in temporary accommodation

2.14 The number of households placed in temporary accommodation by local authorities under the Homeless Persons legislation increased rapidly from March 2002. This increase has been driven both by the increase in applications and by the new duties placed on councils since September 2002. The homelessness statistics system monitors the use of temporary accommodation through a series of snapshot returns giving information on numbers in temporary accommodation at the end of each quarter

2.15 There were 9,164 households in temporary accommodation on 31 March 2007 (Table 20). This represents an increase of 10% compared to the situation as at 31 March 2006. Although the numbers continue to rise, the longer term data indicate a steady tapering off for the rate of increase when compared with previous years, particularly in relation to the increase of 32% between 2002 and 2003 (Table 20 and Chart 4).



2.16 The most recent figure for households with children or pregnant women in temporary accommodation was 3,235 as at 31 March 2007, representing an increase of 13% from 31 March 2006. Again, the longer term trend indicates that the rate of increase has been slowing down to some extent over the past three years (Table 20).

2.17 As at 31 March 2007, 59% of households in temporary accommodation were in local authority or housing association accommodation, with a further 17% in hostels and 17% in bed and breakfast accommodation. The proportion of households in social sector accommodation has been increasing since 2002 (Table 21).

2.18 Households with children or pregnant women are mainly provided with local authority or housing association accommodation (83%), with a small minority (3%) being placed in bed and breakfast accommodation. The past two years have shown a decrease in the use of bed and breakfast for this group from 7% in 2005 (Table 21).

2.19 On 31 March 2007, there were 88 households with children or pregnant women in bed and breakfast accommodation. This varied by local authority, with 19 local authorities having none or only one household with children in bed and breakfast, and three local authorities having more than ten (Table 22).

Implementation of the Unsuitable Accommodation Order

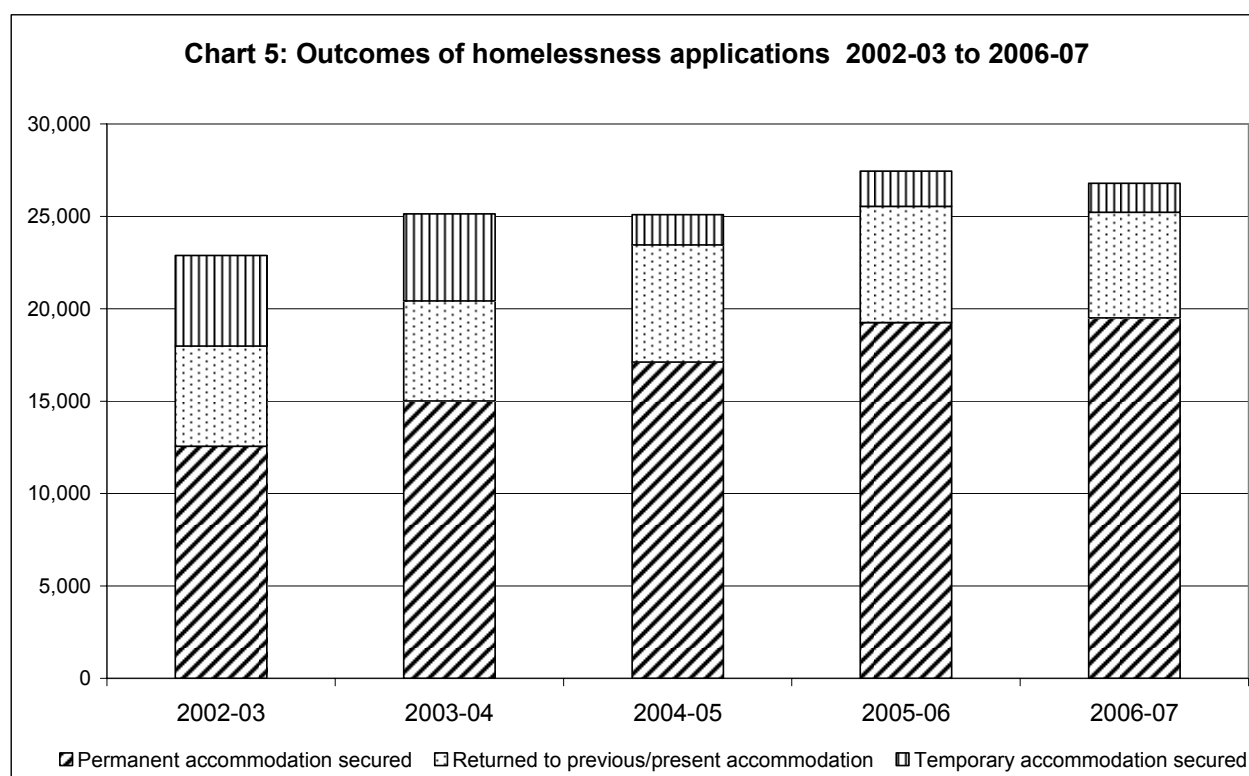
2.20 For each quarter from June 2005, councils have reported on the number of households at the end of the quarter in temporary accommodation which was in breach of the Unsuitable Accommodation Order (described in section 3.5). The snapshot figures show:

- Nine councils reported breaches of the order on 31 March 2007, affecting 34 households, this shows a drop from 55 reported breached at 31 March 2006. The most recent figure represents 1% of households with children or pregnant women in temporary accommodation at that point.
- Fourteen local authorities had no breaches of the Order at any time point.
- Around two-thirds of local authorities did not have any breaches of the Order at any single time point.
- Nine local authorities had five or more breaches at some time point.

Time trends for these figures will be reported as more data become available.

Housing outcomes

2.21 Of the 24,841 applications assessed as priority need and actioned during 2006-07, 73% were re-housed in permanent accommodation, 4% secured temporary accommodation and 6% returned to their previous/present accommodation. Reflecting the increases in applications as well as the increasing proportion of households assessed as in priority need, the overall number of applicant households securing permanent accommodation has increased markedly over the past three years (Chart 5 and Tables 25 and 26).



2.22 Seventy seven per cent of households with children assessed as in priority need secured permanent accommodation, as did 67% of single-person households assessed as priority (Table 25).

2.23 Of those in priority need, the proportion securing permanent accommodation varied between councils from 88% in Dundee to 39% in Midlothian (Table 26). A relatively high proportion (17%) of priority homeless in Glasgow were reported to have secured temporary accommodation: this is likely to consist in the main of accommodation provided under the interim accommodation regulations, and use of this type of service will be picked up in future by the revised HL1 return implemented in April 2007.

3. SUMMARY OF CURRENT LEGISLATION

3.1 The Housing (Homeless Persons) Act 1977, now consolidated into Part II of the Housing (Scotland) Act 1987, introduced statutory duties on housing authorities to assist those who are homeless or threatened with homelessness (potentially homeless), including providing accommodation in certain circumstances.

3.2 The legislation requires local authorities to make inquiries into the circumstances of applicants to satisfy themselves whether the applicant is homeless or potentially homeless. Once the authority is satisfied this is the case, it must also determine whether the applicant has a priority need, whether he/she became homeless intentionally and may also explore whether the applicant has a local connection with another authority in Scotland, England or Wales. A local connection with an authority means that the applicant normally resided in that area from choice, either because he/she was employed in or had family associations with it, or for other special reasons.

3.3 Section 24 of the Housing (Scotland) Act 1987, as amended, defines homelessness for the purposes of the Act as follows. A person is homeless if he/she has no accommodation in the UK or elsewhere. A person is also homeless if he/she has accommodation but cannot occupy it, or it would be unreasonable for them to occupy it, for example because of a threat of violence. A person is potentially homeless (threatened with homelessness) if it is likely that he/she will become homeless within two months. A person is intentionally homeless if he/she deliberately did or failed to do anything which led to the loss of accommodation which it was reasonable for him/her to continue to occupy.

3.4 A person is regarded as having a priority need for accommodation if:

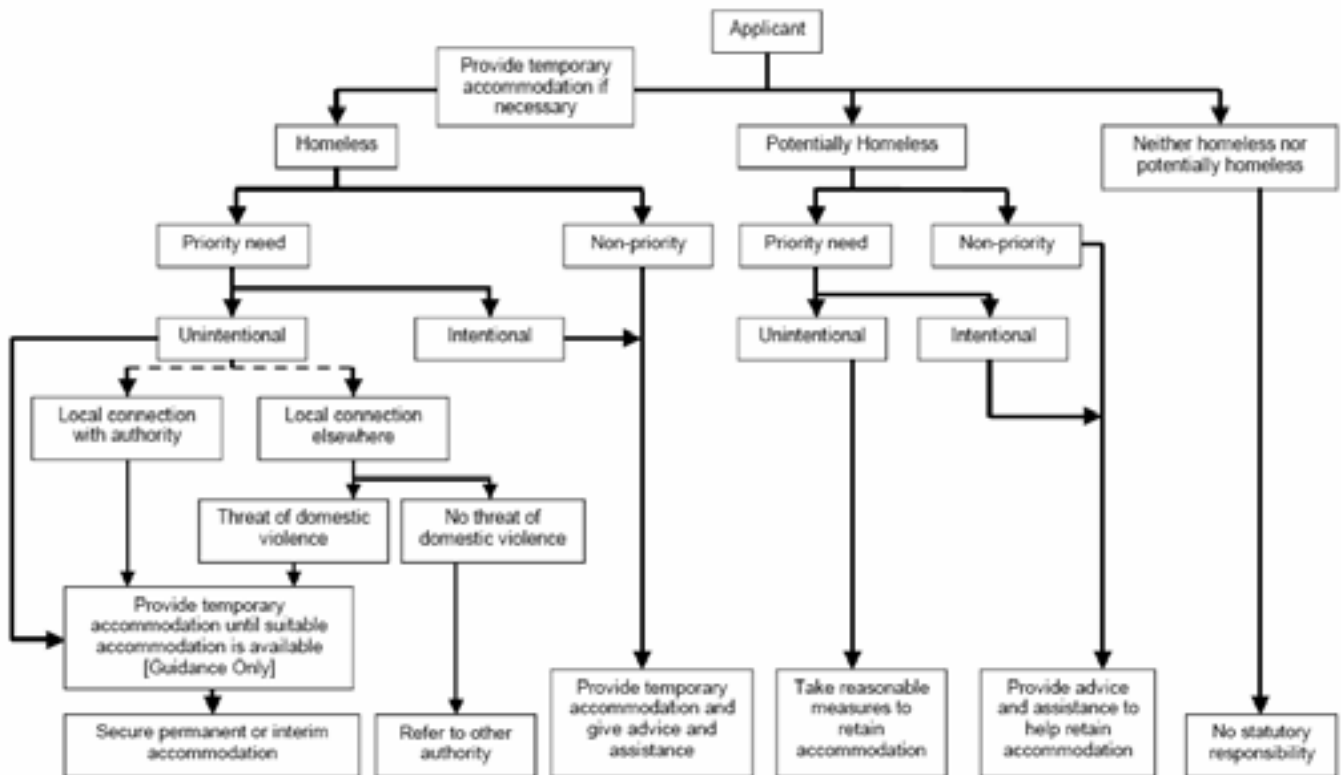
- a. the household contains dependent children
- b. a member of the household is pregnant
- c. a member of the household is vulnerable because of:
 - old age
 - learning disability
 - physical disability
 - personality disorder
 - mental illness
 - chronic ill health
 - miscarriage
 - abortion
 - discharge from hospital, prison or the armed forces
 - other special reasons
- d. he/she is
 - a single young person under 21 who is looked after by a local authority (formerly 'in care') at school leaving age or later
 - at risk of sexual or financial exploitation or involvement in substance misuse as a result of their living circumstances
- e. the household is homeless in an emergency (such as fire or flood).
- f. he/she is a person aged 16 or 17
- g. he/she runs the risk of domestic abuse
- h. he/she runs the risk of violence or harassment by reason of their religion, sexual orientation, race, colour or ethnic or national origins.

(Housing (Scotland) Act 1987, Section 25)

3.5 The Housing (Scotland) Act 2001 requires councils to provide a minimum of temporary accommodation, advice and assistance to **all applicants assessed as homeless**, regardless of whether they have been assessed as being in priority need. The Homelessness Etc (Scotland) Act 2003 is more long-term in scope, notably introducing a phasing out of the distinction between priority and non-priority applications, and enabling the suspension of the test of local connection. The ultimate aim of the Act is to ensure that everyone assessed as being unintentionally homeless is entitled to permanent accommodation by 2012. The Homeless Persons (Unsuitable Accommodation) (Scotland) Order 2004 came into force on 6 December 2004, and is intended to prevent the routine use of unsuitable temporary accommodation for households with family commitments. Under this Order, local authorities cannot put households with children and pregnant women into 'unsuitable' temporary accommodation, unless exceptional circumstances apply.

3.6 A summary of local authorities' current responsibilities is shown in Figure 1.

Figure 1: Local authority assessment of applicants and responsibilities under the current Homeless Persons legislation



Source: Graphic provided by the Scottish Council for Single Homeless.

Note: Lost contacts and situations resolved prior to assessment are not indicated as local authorities have no statutory responsibilities in these cases. In the case of loss of contact, the case may only be closed after 28 days from the date of last interview.

3.7 The Ministerial Statement on the Abolition of Priority Need, published in December 2005, indicated that local authorities would be asked to produce progress reports focusing on performance against the topline outcomes set by the Homelessness Monitoring Group:

- No one need sleep rough
- Existing homelessness becomes more visible
- Sustainable resettlement is secured for people who have become homeless
- Fewer people become homeless in the first place
- The duration of homelessness is reduced

3.8 The Scottish Government will issue centrally held data derived from the HL1 to local authorities as part of this monitoring process to enable a more informed dialogue with local government regarding homelessness trends.

4. NOTES ON TABLES

4.1 The data presented in these tables are based on the time period relevant to the analysis. In some cases this might be the year of application, while in others this might relate to the year in which the assessment was made or action taken. Data prior to December 2001 are reported by year of application only, as are any time series data. All years refer to financial years.

4.2 Between 1990-91 and 10 December 2001, information from the authorities' case returns is grossed up so that the total number of applications, on the whole, is equal to the numbers supplied on the authorities' quarterly returns. Since the resulting figures are estimates, the numbers are rounded to the nearest hundred for national level analyses and to the nearest ten for local authority level analyses (see section 5). Due to the fact that the national figures from 1992-93 to December 2001 are rounded, figures may not sum to the totals given, as the totals are based on the unrounded figures. Percentages are also based on unrounded figures.

4.3 To facilitate comparisons between authorities, some of the local authority tables are presented in the form of percentages. However, where the number of applications is small the percentage figures should be treated with caution.

4.4 Unless otherwise stated, the assessment category of 'homeless' includes both homeless and potentially homeless, as well as unintentional and intentional homeless. Although the focus of the current legislative changes is on providing secure accommodation to those assessed as unintentionally homeless, the proportion of applications assessed as intentionally homeless and in priority need is relatively small. This category has therefore been combined with that of unintentionally homeless and in priority need for the more complex analyses.

4.5 The data collection system introduced in December 2001 allows analysis by individual households and the identification of repeat applications. However, this is not the case for earlier data and so analyses comparing data over time will tend to refer to applications rather than individual households. This is also the case for analyses of flow through the assessment process where repeat applications by the same individual household might be assessed differently and have different outcomes. For other analyses it is useful to distinguish individual households and so the unit of analysis (applications or individual households) is specified in the footnotes for each table.

4.6 The figures on households in temporary accommodation relate to households which have been placed in temporary accommodation by a local authority under the Homeless Persons legislation. This will include households for whom the local authority's decision and final action is still pending, as well as households which were secured such accommodation as a final action by the authority under the legislation. The data provide a snapshot picture of the numbers in temporary accommodation as at the last day of each quarter. From June 2005, these figures include numbers of households with children or pregnant women in unsuitable accommodation and the number of cases where the Unsuitable Accommodation Order is breached.

4.7 The following symbols are used in all tables:

- nil

* less than half the final digit shown (less than: 0.5%, 50 for figures rounded to nearest 100, or 5 for figures rounded to nearest 10)

.. not available.

4.8 Figures which have been substantively revised for this issue (as well as all percentages) are shown in *italic* type. In some tables, where figures have been rounded, the total shown may not equal the sum of its constituent parts.

4.9 Due to the live nature of the data collection system, figures are updated on a continuous basis and the information published here may differ from that published previously.

APPLICATIONS AND APPLICANT HOUSEHOLDS

Number of applications to local authorities under the Homeless Persons legislation: 1992-93 to 2006-07

Table 1

	All applications	Assessed as homeless		Assessed as homeless and in priority need	
		Number	% of all applications	Number	% of applications assessed as homeless
1992-93	42,822	30,100	70	19,800	66
1993-94	43,038	30,900	72	18,200	59
1994-95	41,495	31,600	76	17,500	55
1995-96	40,936	30,300	74	16,900	56
1996-97	40,989	30,600	75	16,800	55
1997-98	43,135	32,500	75	17,600	54
1998-99	45,723	33,500	73	18,400	55
1999-00	46,023	33,600	73	20,200	60
2000-01	45,004	33,300	74	20,500	62
2001-02	47,493	37,100	78	26,900	73
2002-03	52,043	40,115	77	29,355	73
2003-04	56,635	42,907	76	31,459	73
2004-05	57,396	41,549	72	31,139	75
2005-06	60,436	43,265	72	32,668	76
2006-07 ¹	59,096	41,123	70	31,464	77

Notes: Data prior to 2002-03 are estimated (see notes and definitions). Percentages for 2002-03 onwards are based on applications made during the period, including lost contact/withdrawal/resolved prior to assessment, as well as cases which have not yet been assessed.

1. For applications made in 2006-07, there were 2,102 cases which had not been assessed by the end of the period (this may include some cases where contact has been lost). Assessment figures for 2006-07 are therefore provisional.

Applications by assessment and household type: 1996-97 to 2006-07

Table 2

Table 2a Priority homeless

Household type	1996-97	1997-98	1998-99	1999-00	2000-01	2001-02	2002-03	2003-04	2004-05	2005-06	2006-07 ¹
Total	16,800	17,600	18,400	20,200	20,500	26,800	29,355	31,459	31,139	32,668	31,464
Single person under 18	1,900	2,000	2,200	2,200	2,300	2,500	2,591	2,543	2,601	2,638	2,403
Single person 18-24	1,100	1,300	1,600	2,300	2,400	3,800	4,155	4,240	4,064	4,257	4,157
Single person 25-retirement	2,200	2,700	3,200	4,400	5,100	8,600	9,179	9,974	9,258	10,070	9,565
Single person over retirement age	700	700	700	700	700	700	954	897	826	801	816
Single parent under 25	2,300	2,100	2,000	2,000	2,000	2,200	2,302	2,551	2,811	2,860	2,704
Single parent 25+	5,700	5,900	5,900	6,000	5,600	6,100	6,370	6,891	7,094	7,515	7,238
Couple without children	700	600	800	800	700	800	1,052	1,254	1,347	1,366	1,437
Couple with children	2,000	1,900	1,800	1,600	1,500	1,500	1,832	1,982	2,020	2,034	2,064
Other household type	300	300	200	200	300	600	920	1,127	1,118	1,127	1,080

Table 2b Non-priority homeless

Household type	1996-97	1997-98	1998-99	1999-00	2000-01	2001-02	2002-03	2003-04	2004-05	2005-06	2006-07 ¹
Total	13,900	14,900	15,100	13,400	12,800	10,300	10,760	11,448	10,410	10,597	9,659
Single person under 18	600	400	400	200	200	100	23	18	19	25	10
Single person 18-24	4,600	4,900	5,100	4,800	4,400	3,700	3,817	3,786	3,521	3,601	3,328
Single person 25-retirement	7,500	8,300	8,400	7,400	7,200	5,700	6,129	6,783	6,027	6,118	5,480
Single person over retirement age	100	100	100	100	100	*	23	25	32	34	44
Single parent under 25	100	100	100	100	*	*	1	-	-	-	-
Single parent 25+	300	300	300	300	200	100	2	-	-	-	-
Couple without children	600	700	500	500	500	500	567	620	622	582	555
Couple with children	100	100	100	100	*	*	1	-	-	-	-
Other household type	100	100	100	100	100	100	197	216	189	237	242

Table 2c Not homeless/lost contact

Household type	1996-97	1997-98	1998-99	1999-00	2000-01	2001-02	2002-03	2003-04	2004-05	2005-06	2006-07 ¹
Total	10,300	10,600	11,200	11,600	11,700	11,200	11,777	13,267	15,586	16,700	15,871
Single person under 18	1,300	1,600	1,700	1,700	1,600	1,400	1,265	1,308	1,459	1,485	1,360
Single person 18-24	1,400	1,300	1,500	1,700	1,700	1,700	1,963	2,351	2,621	2,898	2,821
Single person 25-retirement	2,200	2,100	2,300	2,700	2,800	2,900	3,632	4,268	5,165	5,664	5,419
Single person over retirement age	300	300	300	300	300	300	291	298	341	337	308
Single parent under 25	900	900	900	1,000	1,000	900	790	812	953	955	965
Single parent 25+	2,700	2,800	2,800	2,800	2,700	2,500	2,116	2,230	2,650	2,839	2,599
Couple without children	400	400	500	500	500	500	584	686	866	887	807
Couple with children	1,000	1,100	1,000	900	900	800	739	811	993	983	980
Other household type	100	200	100	100	200	300	397	503	538	652	612

Table 2d Priority homeless

Household type	1996-97	1997-98	1998-99	1999-00	2000-01	2001-02	2002-03	2003-04	2004-05	2005-06	2006-07 ¹
	100	100	100	100	100	100	100	100	100	100	100
Total	11	11	12	11	11	9	9	8	8	8	8
Single person under 18	7	7	9	11	12	14	14	13	13	13	13
Single person 18-24	13	15	17	22	25	32	31	32	30	31	30
Single person 25-retirement	4	4	4	3	3	3	3	3	3	2	3
Single person over retirement age	13	12	11	10	10	8	8	8	9	9	9
Single parent under 25	34	34	32	30	27	23	22	22	23	23	23
Couple without children	4	3	4	4	3	3	4	4	4	4	5
Couple with children	12	11	10	8	7	6	6	6	6	6	7
Other household type	2	2	1	1	2	2	3	4	4	3	3

Table 2e Non-priority homeless

Household type	1996-97	1997-98	1998-99	1999-00	2000-01	2001-02	2002-03	2003-04	2004-05	2005-06	2006-07 ¹
	100	100	100	100	100	100	100	100	100	100	100
Total	4	3	3	2	1	1	*	*	*	*	*
Single person under 18	33	33	33	36	35	36	35	33	34	34	34
Single person 18-24	54	56	56	55	57	56	57	59	58	58	57
Single person 25-retirement	1	1	1	*	*	*	*	*	*	*	*
Single person over retirement age	*	*	1	*	*	*	*	-	-	-	-
Single parent under 25	2	2	2	2	2	1	*	-	-	-	-
Single parent 25+	4	4	3	4	4	5	5	5	6	5	6
Couple without children	1	1	1	*	*	*	*	-	-	-	-
Couple with children	1	1	1	1	1	1	2	2	2	2	3
Other household type											

Table 2f Not homeless/lost contact

Household type	1996-97	1997-98	1998-99	1999-00	2000-01	2001-02	2002-03	2003-04	2004-05	2005-06	2006-07 ¹
	100	100	100	100	100	100	100	100	100	100	100
Total	13	15	15	14	14	13	11	10	9	9	9
Single person under 18	13	12	13	15	15	15	17	18	17	17	18
Single person 18-24	21	20	21	23	24	26	31	32	33	34	34
Single person 25-retirement	3	3	3	3	2	3	2	2	2	2	2
Single person over retirement age	9	8	8	8	8	8	7	6	6	6	6
Single parent under 25	26	26	25	24	23	22	18	17	17	17	16
Single parent 25+	3	4	4	4	4	4	5	5	6	5	5
Couple without children	10	10	9	8	8	7	6	6	6	6	6
Couple with children	1	2	1	1	2	2	3	4	3	4	4
Other household type											

Notes: Data prior to 2002-03 are estimated see notes and definitions). Percentages for 2002-03 onwards are based on applications made during the period, including lost contact/withdrawal/resolved prior to assessment/meligrable, but excluding cases which have not yet been assessed.

1. For applications made in 2006-07, there were some 2,000 cases which had not been assessed by the end of the period (this may include cases where contact has been lost). Figures for 2006-07 are therefore provisional..

**Number of applications under the Homeless Persons legislation by local authority:
1996-97 to 2006-07**

Table 3

	1996-97	1997-98	1998-99	1999-00	2000-01	2001-02	2002-03	2003-04	2004-05	2005-06	2006-07	Change 05-06 to 06-07	
												Number	%
Scotland	40,989	43,135	45,723	46,023	45,004	46,540	52,043	56,635	57,396	60,436	59,096	-1,340	-2
Aberdeen City	1,916	1,739	1,797	1,800	1,584	1,516	1,579	1,840	1,623	2,076	2,321	245	12
Aberdeenshire	1,303	1,169	1,252	1,354	1,243	1,147	1,161	1,187	1,391	1,467	1,636	169	12
Angus	947	961	1,108	1,227	888	950	1,213	1,406	1,539	1,252	1,117	-135	-11
Argyll & Bute	534	474	394	347	341	493	668	905	977	1,119	995	-124	-11
Clackmannanshire	520	577	579	613	649	742	966	1,005	1,125	1,160	1,069	-91	-8
Dumfries & Galloway	1,085	1,168	1,072	1,397	1,305	1,374	1,593	1,578	1,693	1,621	1,561	-60	-4
Dundee City	1,037	1,024	1,029	1,051	861	929	957	1,154	1,461	1,940	2,086	146	8
East Ayrshire	591	789	815	662	658	703	950	1,017	1,185	1,252	1,185	-67	-5
East Dunbartonshire	482	440	399	417	400	453	517	640	554	602	655	53	9
East Lothian	1,049	1,080	930	948	896	830	834	890	999	1,113	1,127	14	1
East Renfrewshire	286	274	204	342	377	377	395	397	404	368	373	5	1
Edinburgh, City of	3,575	3,795	4,119	4,342	4,410	4,233	4,912	5,485	5,171	5,040	5,507	467	9
Eilean Siar	156	173	160	119	140	103	171	216	260	246	273	27	11
Falkirk	1,116	1,064	1,281	1,409	1,376	1,346	1,506	1,632	1,624	1,974	1,937	-37	-2
Fife	2,454	2,824	3,867	3,388	3,262	3,684	3,762	3,984	4,125	4,164	4,351	187	4
Glasgow City	12,014	12,665	13,150	12,645	12,202	13,244	13,006	12,719	10,682	11,216	10,493	-723	-6
Highland	898	979	928	816	954	985	1,389	2,103	2,308	2,459	2,192	-267	-11
Inverclyde	282	386	463	370	433	409	661	698	839	877	724	-153	-17
Midlothian ¹	427	370	466	424	363	401	444	544	610	637	655	18	3
Moray	272	403	305	280	298	348	715	629	986	1,126	804	-322	-29
North Ayrshire	740	984	1,034	1,152	1,067	1,240	1,802	1,825	1,724	1,636	1,512	-124	-8
North Lanarkshire	1,668	1,838	2,083	1,986	1,982	1,949	2,670	3,139	3,998	4,091	3,749	-342	-8
Orkney	91	105	133	163	124	157	147	166	207	192	176	-16	-8
Perth & Kinross	515	523	667	863	1,006	960	1,223	1,455	1,468	1,342	982	-360	-27
Renfrewshire	714	659	652	662	897	971	1,021	1,478	1,697	1,634	1,663	29	2
Scottish Borders, The	639	656	471	516	542	585	593	857	801	991	954	-37	-4
Shetland	203	166	148	126	181	194	166	187	162	191	224	33	17
South Ayrshire ¹	958	903	933	1,064	1,028	1,015	984	1,018	1,081	1,026	834	-192	-19
South Lanarkshire	1,795	2,038	2,007	1,977	1,968	1,873	2,369	2,496	2,278	2,412	2,400	-12	0
Stirling	883	938	1,028	917	799	777	848	859	1,036	1,053	1,090	37	4
West Dunbartonshire	831	701	645	869	1,121	1,020	1,256	1,231	1,431	2,270	2,401	131	6
West Lothian	1,008	1,270	1,604	1,777	1,649	1,532	1,565	1,895	1,957	1,889	2,050	161	9

Notes: Figures prior to December 2001 are taken from the HL2 summary return. Figures from January 2002 onwards are provided by the electronic HL1 individual case returns. Some applications will have been from households that applied previously in the same year - the extent of repeat applications prior to 2002 is difficult to assess from existing data.

1. Figures for 2006-07 represent an underestimate due to technical difficulties in submitting HL1 data.

Number of applications made by households within 12 months by household type: 2006-07

Table 4

Household type	All applications during period		Households applying once in period		Households applying two or three times in period		Households applying more than three times in period	
	Number	%	Number	%	Number	%	Number	%
Single person male	24,392	41	19,932	39	2,729	57	68	87
Single person female	12,614	21	10,960	21	1,045	22	8	10
Single parent male	2,733	5	2,578	5	98	2	-	-
Single parent female	11,259	19	10,318	20	622	13	1	1
Couple without children	2,922	5	2,737	5	112	2	-	-
Couple with children	3,173	5	2,976	6	119	2	1	1
Other household without children	1,059	2	1,014	2	32	1	-	-
Other household with children	944	2	904	2	21	*	-	-
Total	59,096	100	51,419	100	4,778	100	78	100

Notes: Households with repeat applications are those with a repeat presentation within 12 months of a previous application, regardless of the assessment decision for either application. Due to technical problems experienced by some local authorities in terms of identifying associated applications by the same household, these figures may underestimate the scale of repeat applications to some extent.

Applications reassessed as homeless/potentially homeless within 12 months of previous case being closed: Scotland and local authority level **Table 5**

	Assessments 2006-07	Previous case closed within 12 months	% of repeat assessments
Scotland	42,099	3,222	8
Aberdeen City	1,466	55	4
Aberdeenshire	1,056	70	7
Angus	900	2	*
Argyll & Bute	615	48	8
Clackmannanshire	706	39	6
Dumfries & Galloway	1,072	58	5
Dundee City	1,119	29	3
East Ayrshire	849	103	12
East Dunbartonshire	456	30	7
East Lothian	681	35	5
East Renfrewshire	290	21	7
Edinburgh, City of	5,183	539	10
Eilean Siar	163	7	4
Falkirk	1,375	17	1
Fife	2,740	155	6
Glasgow City	8,609	1,114	13
Highland	1,610	148	9
Inverclyde	492	9	2
Midlothian	588	35	6
Moray	565	12	2
North Ayrshire	1,112	60	5
North Lanarkshire	2,794	161	6
Orkney	124	6	5
Perth & Kinross	658	13	2
Renfrewshire	781	42	5
Scottish Borders, The	573	17	3
Shetland	131	3	2
South Ayrshire	397	27	7
South Lanarkshire	1,870	142	8
Stirling	499	31	6
West Dunbartonshire	1,145	59	5
West Lothian	1,480	135	9
	Assessments during period	Previous case closed within 12 months	% of repeat assessments
Scotland			
2003-04	42,420	3,887	9.2
2004-05	41,403	3,516	8.5
2005-06	43,312	3,518	8.1
2006-07	42,099	3,222	7.7

Notes: Definitions for this table are those used by the Accounts Commission for the statutory performance indicator 6(c) on homelessness. In this case, the percentage represents the number of applications assessed as homeless or potentially homeless within 12 months of a previous application by the same household (also resulting in a homeless/potentially homeless assessment) being closed, relative to the number of applications assessed as homeless/potentially homeless during 2005-06.

Due to technical problems experienced by some local authorities in identifying associated applications by the same household, some local authority level figures may underestimate the scale of repeat assessments to some extent.

**Number of individual households applying by local authority:
2006-07**

Table 6

	Number of households	% of all households
Scotland	56,275	2.46
Aberdeen City	2,194	2.21
Aberdeenshire	1,562	1.58
Angus	1,115	2.28
Argyll & Bute	944	2.30
Clackmannanshire	1,035	4.73
Dumfries & Galloway	1,495	2.23
Dundee City	1,988	2.94
East Ayrshire	1,103	2.13
East Dunbartonshire	638	1.49
East Lothian	1,080	2.69
East Renfrewshire	358	1.00
Edinburgh, City of	5,249	2.44
Eilean Siar	265	2.29
Falkirk	1,926	2.89
Fife	4,073	2.58
Glasgow City	9,794	3.54
Highland	2,083	2.17
Inverclyde	709	1.93
Midlothian ¹	641	1.91
Moray	788	2.09
North Ayrshire	1,453	2.39
North Lanarkshire	3,638	2.59
Orkney	172	1.93
Perth & Kinross	975	1.57
Renfrewshire	1,521	1.97
Scottish Borders, The	942	1.88
Shetland	220	2.33
South Ayrshire ¹	802	1.59
South Lanarkshire	2,292	1.73
Stirling	1,031	2.77
West Dunbartonshire	2,237	5.46
West Lothian	1,952	2.77

Notes: All households applying during period. Due to technical problems experienced by some local authorities in terms of identifying associated applications by the same household, some local authority level figures may overestimate the actual number of households.

Percentages are calculated using the 2004-based household projections for Scotland for 2006.

1. Figures may represent an underestimate due to technical difficulties.

Households applying by local authority and household type: 2006-07

Table 7

Table 7a

Number

	Household type								All households
	Single person male	Single person female	Single parent male	Single parent female	Couple without children	Couple with children	Other household without children	Other household with children	
Scotland	22,727	12,010	2,676	10,942	2,854	3,094	1,042	930	56,275
Aberdeen City	1,071	573	53	243	106	68	51	29	2,194
Aberdeenshire	556	339	23	390	107	105	20	22	1,562
Angus	420	228	50	189	80	80	33	35	1,115
Argyll & Bute	335	204	93	155	57	58	20	22	944
Clackmannanshire	315	241	65	246	59	75	17	17	1,035
Dumfries & Galloway	613	328	30	263	114	115	14	18	1,495
Dundee City	689	414	168	428	92	119	38	40	1,988
East Ayrshire	490	236	23	236	49	45	11	13	1,103
East Dunbartonshire	218	130	20	168	30	53	11	8	638
East Lothian	380	258	23	220	55	86	34	24	1,080
East Renfrewshire	143	81	4	62	13	21	14	20	358
Edinburgh, City of	2,210	1,142	352	923	286	221	69	46	5,249
Eilean Siar	109	50	5	49	23	18	6	5	265
Falkirk	678	444	120	414	126	112	21	11	1,926
Fife	1,550	879	273	770	170	239	128	64	4,073
Glasgow City	4,676	1,931	312	1,765	345	390	180	195	9,794
Highland	879	440	45	321	144	137	35	82	2,083
Inverclyde	376	148	11	122	9	17	15	11	709
Midlothian ¹	171	121	56	172	40	59	12	10	641
Moray	336	154	18	146	50	70	11	3	788
North Ayrshire	691	297	29	259	79	69	18	11	1,453
North Lanarkshire	1,100	772	381	888	140	212	75	70	3,638
Orkney	64	39	8	30	11	13	2	5	172
Perth & Kinross	359	184	62	187	83	70	17	13	975
Renfrewshire	629	349	109	298	48	63	18	7	1,521
Scottish Borders, The	365	226	23	147	66	80	17	18	942
Shetland	98	39	11	37	19	8	6	2	220
South Ayrshire ¹	358	146	21	162	50	49	3	13	802
South Lanarkshire	839	429	96	569	106	152	55	46	2,292
Stirling	422	199	19	226	80	68	9	8	1,031
West Dunbartonshire	904	654	29	426	89	66	41	28	2,237
West Lothian	683	335	144	431	128	156	41	34	1,952

Table 7b

Percentage

	Household type								All households
	Single person male	Single person female	Single parent male	Single parent female	Couple without children	Couple with children	Other household without children	Other household with children	
Scotland	40	21	5	19	5	5	2	2	100
Aberdeen City	49	26	2	11	5	3	2	1	100
Aberdeenshire	36	22	1	25	7	7	1	1	100
Angus	38	20	4	17	7	7	3	3	..
Argyll & Bute	35	22	10	16	6	6	2	2	100
Clackmannanshire	30	23	6	24	6	7	2	2	100
Dumfries & Galloway	41	22	2	18	8	8	1	1	100
Dundee City	35	21	8	22	5	6	2	2	100
East Ayrshire	44	21	2	21	4	4	1	1	100
East Dunbartonshire	34	20	3	26	5	8	2	1	100
East Lothian	35	24	2	20	5	8	3	2	100
East Renfrewshire	40	23	1	17	4	6	4	6	100
Edinburgh, City of	42	22	7	18	5	4	1	1	100
Eilean Siar	41	19	2	18	9	7	2	2	100
Falkirk	35	23	6	21	7	6	1	1	100
Fife	38	22	7	19	4	6	3	2	100
Glasgow City	48	20	3	18	4	4	2	2	100
Highland	42	21	2	15	7	7	2	4	100
Inverclyde	53	21	2	17	1	2	2	2	100
Midlothian ¹	27	19	9	27	6	9	2	2	100
Moray	43	20	2	19	6	9	1	*	100
North Ayrshire	48	20	2	18	5	5	1	1	100
North Lanarkshire	30	21	10	24	4	6	2	2	100
Orkney	37	23	5	17	6	8	1	3	100
Perth & Kinross	37	19	6	19	9	7	2	1	100
Renfrewshire	41	23	7	20	3	4	1	*	100
Scottish Borders, The	39	24	2	16	7	8	2	2	100
Shetland	45	18	5	17	9	4	3	1	100
South Ayrshire ¹	45	18	3	20	6	6	*	2	100
South Lanarkshire	37	19	4	25	5	7	2	2	100
Stirling	41	19	2	22	8	7	1	1	100
West Dunbartonshire	40	29	1	19	4	3	2	1	100
West Lothian	35	17	7	22	7	8	2	2	100

Note: All households applying during period.

1. Figures may represent an underestimate due to technical difficulties.

Applications by ethnicity and deprivation category: 2006-07

Table 8

	All applications	% of all households ¹	Assessed as homeless		Assessed as homeless and in priority need	
			Number	% of applications assessed	Number	% of applications assessed as homeless
Scotland	59,099		42,110	72	32,210	76
Ethnicity of main applicant						
White Scottish	51,507		36,833	72	28,420	77
White other British	3,364		2,357	71	1,645	70
White other	1,374		875	66	573	65
Black, Black Scottish or Black British	352		258	76	194	75
Asian, Asian Scottish or Asian British	584		456	80	351	77
Other (including mixed)	903		681	78	470	69
Not known / refused	1,015		650	64	557	86
Scottish Index of Multiple Deprivation quintiles^{2,3}						
1 (most deprived 20% of areas)	13,301	2.76	9,446	71	7,496	79
2	8,838	1.93	6,194	70	4,723	76
3	5,783	1.35	4,033	69	3,004	74
4	3,730	0.90	2,669	71	1,969	74
5 (least deprived 20% of areas)	2,107	0.52	1,585	74	1,174	74
Not known	25,340		18,183	73	13,844	76

Notes: Percentages are based on applications and assessments during the period.

1. Percentages are based on household data from the 2001 Census on number of households in each postcode sector.
2. Based on postcode of last settled accommodation (if in Scotland). This is recorded for about 60% of applications and coverage varies substantially between local authorities.
3. Based on the 2006 Scottish Index of Multiple Deprivation. Information on the SIMD can be found on the Scottish Government website at <http://www.scotland.gov.uk/Topics/Statistics/SIMD/Overview..>

Main reason for applying: 2006-07

Table 9

	Household type								All
	Single person male	Single person female	Single parent male	Single parent female	Couple without children	Couple with children	Other household without children	Other household with children	
Loss of accommodation with relatives/friends	10,448	5,882	894	2,433	1,344	772	260	108	22,141
Dispute within household	4,064	3,111	1,045	4,488	79	88	180	250	13,305
Loss of local authority tenancy	518	244	54	261	58	80	20	29	1,264
Loss of other social sector tenancy	383	186	31	234	41	103	21	34	1,033
Loss of private sector tenancy	1,363	678	166	1,207	395	644	173	156	4,782
Mortgage default	210	106	48	151	105	188	60	45	913
Loss of matrimonial home	151	99	73	382	18	31	55	49	858
Loss of service tenancy	134	36	13	10	63	76	9	9	350
Expiry of short assured tenancy	163	119	30	210	78	158	26	38	822
Emergency	128	43	6	45	26	31	10	8	297
House condition	33	14	3	18	14	27	7	4	120
Discharged from hospital/prison	2,480	269	62	33	48	4	9	4	2,909
Loss of temporary accommodation	707	162	5	15	35	8	5	1	938
Gave up secure accommodation	309	159	25	118	74	72	14	9	780
Overcrowding	66	68	23	123	28	73	7	14	402
Harassment/violence/unsafe environment	1,220	620	107	1,033	243	479	91	109	3,902
Other	2,015	818	148	498	273	339	112	77	4,280
All reasons	24,392	12,614	2,733	11,259	2,922	3,173	1,059	944	59,096

Table 9a

	Household type								All
	Single person male	Single person female	Single parent male	Single parent female	Couple without children	Couple with children	Other household without children	Other household with children	
Loss of accommodation with relatives/friends	43	47	33	22	46	24	25	11	37
Dispute within household	17	25	38	40	3	3	17	26	23
Loss of local authority tenancy	2	2	2	2	2	3	2	3	2
Loss of other social sector tenancy	2	1	1	2	1	3	2	4	2
Loss of private sector tenancy	6	5	6	11	14	20	16	17	8
Mortgage default	1	1	2	1	4	6	6	5	2
Loss of matrimonial home	1	1	3	3	1	1	5	5	1
Loss of service tenancy	1	*	*	*	2	2	1	1	1
Expiry of short assured tenancy	1	1	1	2	3	5	2	4	1
Emergency	1	*	*	*	1	1	1	1	1
House condition	*	*	*	*	*	1	1	*	*
Discharged from hospital/prison	10	2	2	*	2	*	1	*	5
Loss of temporary accommodation	3	1	*	*	1	*	*	*	2
Gave up secure accommodation	1	1	1	1	3	2	1	1	1
Overcrowding	*	1	1	1	1	2	1	1	1
Harassment/violence/unsafe environment	5	5	4	9	8	15	9	12	7
Other	8	6	5	4	9	11	11	8	7
All reasons	100	100	100	100	100	100	100	100	100

Table 9b

Notes: All applications during period. A more detailed version of this table is provided in the annex (Table A).

Average number of applications per month where a household member reported sleeping rough the night before applying for assistance by local authority: Table 10

	2002-03		2003-04		2004-05		2005-06		2006-07	
	Average number per month	% of all applications	Average number per month	% of all applications	Average number per month	% of all applications	Average number per month	% of all applications	Average number per month	% of all applications
Scotland	443	10	443	9	347	7	326	6	323	7
Aberdeen City	42	32	57	37	44	32	40	23	42	22
Aberdeenshire	7	7	7	7	7	6	11	9	12	9
Angus	3	3	5	4	2	1	1	1	2	3
Argyll & Bute	3	6	5	7	6	8	6	7	5	6
Clackmannanshire	4	4	5	6	2	2	1	1	3	3
Dumfries & Galloway	12	9	10	8	10	7	10	7	8	6
Dundee City	5	6	12	12	16	13	15	9	14	8
East Ayrshire	9	11	6	7	6	6	6	6	6	6
East Dunbartonshire	*	1	2	3	1	3	2	3	1	2
East Lothian	7	10	7	9	2	3	3	3	2	3
East Renfrewshire	3	8	1	4	1	4	1	4	1	2
Edinburgh, City of	83	20	91	20	76	18	60	14	58	13
Eilean Siar	1	8	*	2	1	7	1	5	1	3
Falkirk	13	11	15	11	10	7	12	7	12	8
Fife	10	3	8	2	3	1	18	5	36	10
Glasgow City	157	14	124	12	84	9	65	7	54	6
Highland	10	9	21	12	17	9	20	10	15	8
Inverclyde	3	6	2	4	2	3	4	5	5	9
Midlothian	-	-	-	-	*	*	-	-	-	-
Moray	*	1	1	2	6	8	8	8	5	8
North Ayrshire	9	6	12	8	10	7	9	7	6	5
North Lanarkshire	22	10	13	5	1	*	*	*	*	*
Orkney	1	11	1	8	1	4	1	4	*	2
Perth & Kinross	8	8	7	5	7	6	4	4	5	6
Renfrewshire	3	4	8	7	7	5	8	6	8	6
Scottish Borders, The	3	6	4	5	3	4	3	4	3	3
Shetland	*	3	1	5	1	4	1	3	1	6
South Ayrshire	5	6	9	10	9	10	5	6	4	6
South Lanarkshire	2	1	2	1	2	1	2	1	1	1
Stirling	5	8	4	6	7	8	5	6	6	6
West Dunbartonshire	6	6	4	3	4	3	7	4	6	3
West Lothian	4	3	1	1	-	-	*	*	*	*

LOCAL AUTHORITY ASSESSMENT

Local authority assessment decision: 2002-03 to 2006-07

Table 11

	2002-03		2003-04		2004-05		2005-06		2006-07	
	Number	%	Number	%	Number	%	Number	%	Number	%
Homeless priority unintentional	24,171	48	25,836	47	25,261	44	26,829	45	26,544	45
Homeless priority intentional	1,141	2	909	2	897	2	1,018	2	1,234	2
Homeless non-priority	9,253	18	9,745	18	8,712	15	9,113	15	8,560	15
Potentially homeless priority unintentional	3,284	6	4,077	7	4,682	8	4,703	8	4,229	7
Potentially homeless priority intentional	289	1	230	*	198	*	198	*	203	*
Potentially homeless non-priority	1,404	3	1,623	3	1,653	3	1,453	2	1,340	2
Neither homeless nor potentially homeless	4,500	9	4,478	8	5,029	9	5,140	9	4,880	8
Contact lost/withdrew prior to assessment decision	4,488	9	5,427	10	7,008	12	7,539	13	7,452	13
Resolved prior to assessment decision	2,049	4	3,114	6	3,590	6	4,065	7	4,221	7
All assessed in period	50,579	100	55,439	100	57,030	100	60,058	100	58,663	100

Notes: All applications assessed during period, including lost contact/withdrawal/resolved prior to assessment or discharge of duty.

1. Figures for 2005-06 include estimates for Angus and Falkirk based on previous data due to technical difficulties in submitting HLI data for 2005-06.

Assessment decision by household type: 2006-07

Table 12

	Household type										Total
	Single person male	Single person female	Single parent male	Single parent female	Couple without children	Couple with children	Other household without children	Other household with children	Number		
									Total	Percentage	
Homeless priority unintentional	9,414	5,754	1,634	6,346	1,111	1,468	360	457	26,544	45	
Homeless priority intentional	375	186	65	335	67	161	13	32	1,234	2	
Homeless non-priority	6,228	1,690	-	-	441	-	201	-	8,560	15	
Potentially homeless priority	750	848	318	1,481	296	487	97	155	4,432	8	
Potentially homeless non-priority	783	373	-	-	130	-	54	-	1,340	2	
Neither homeless nor potentially homeless	1,612	969	175	1,093	300	474	103	154	4,880	8	
Contact lost/withdrew prior to assessment decision	3,558	1,656	315	1,058	331	297	139	98	7,452	13	
Resolved prior to assessment decision	1,526	1,000	174	873	239	258	91	60	4,221	7	
All applications assessed in period	24,246	12,476	2,681	11,186	2,915	3,145	1,058	956	58,663	100	

Table 12b

	Household type										Total
	Single person male	Single person female	Single parent male	Single parent female	Couple without children	Couple with children	Other household without children	Other household with children	Total	Percentage	
Homeless priority unintentional	39	46	61	57	38	47	34	48	45	45	
Homeless priority intentional	2	1	2	3	2	5	1	3	2	2	
Homeless non-priority	26	14	-	-	15	-	19	-	15	15	
Potentially homeless priority	3	7	12	13	10	15	9	16	8	8	
Potentially homeless non-priority	3	3	-	-	4	-	5	-	2	2	
Neither homeless nor potentially homeless	7	8	7	10	10	15	10	16	8	8	
Contact lost/withdrew prior to assessment decision	15	13	12	9	11	9	13	10	13	13	
Resolved prior to assessment decision	6	8	6	8	8	8	9	6	7	7	
All applications assessed in period	100	100	100	100	100	100	100	100	100	100	

Notes: All applications assessed in period, including lost contact/withdrawal/resolved prior to assessment. For this analysis, the category of 'potentially homeless priority' includes intentionally and unintentionally homeless.

Assessment decision by presence of children in household and age of main applicant: 2006-07

Table 13

	Household type/age of main applicant												Total
	Households without children						Households with children						
	16-17	18-20	21-24	25- retirement	Retirement plus	All	16-17	18-20	21-24	25- retirement	Retirement plus	All	
Homeless priority unintentional	2,331	2,256	1,972	9,423	652	16,634	202	924	1,580	7,180	11	9,897	26,531
Homeless priority intentional	42	67	80	418	36	643	9	46	107	434	-	596	1,239
Homeless non-priority	15	1,568	1,680	5,294	8	8,565	-	-	-	-	-	-	8,565
Potentially homeless priority	244	283	233	1,027	203	1,990	37	196	353	1,852	3	2,441	4,431
Potentially homeless non-priority	4	236	243	850	5	1,338	-	-	-	-	-	-	1,338
Neither homeless nor potentially homeless	382	392	361	1,742	109	2,986	25	146	290	1,432	2	1,895	4,881
Contact lost/withdrew prior to assessment decision	726	926	940	3,021	72	5,685	26	170	288	1,283	2	1,769	7,454
Resolved prior to assessment decision	430	411	327	1,561	126	2,855	15	104	200	1,042	6	1,367	4,222
All applications assessed in period	4,174	6,139	5,836	23,336	1,211	40,696	314	1,586	2,818	13,223	24	17,965	58,661

	Household type/age of main applicant												Total
	Households without children						Households with children						
	16-17	18-20	21-24	25- retirement	Retirement plus	All	16-17	18-20	21-24	25- retirement	Retirement plus	All	
Homeless priority unintentional	56	37	34	40	54	41	64	58	56	54	46	55	45
Homeless priority intentional	1	1	1	2	3	2	3	3	4	3	-	3	2
Homeless non-priority	*	26	29	23	1	21	-	-	-	-	-	-	15
Potentially homeless priority	6	5	4	4	17	5	12	12	13	14	13	14	8
Potentially homeless non-priority	*	4	4	4	*	3	-	-	-	-	-	-	2
Neither homeless nor potentially homeless	9	6	6	7	9	7	8	9	10	11	8	11	8
Contact lost/withdrew prior to assessment decision	17	15	16	13	6	14	8	11	10	10	8	10	13
Resolved prior to assessment decision	10	7	6	7	10	7	5	7	7	8	25	8	7
All applications assessed in period	100	100	100	100	100	100	100	100	100	100	100	100	100

Notes: All applications assessed in period, including lost contact/withdrawal/resolved prior to assessment. For this analysis, the category of 'potentially homeless priority' includes intentionally and unintentionally homeless.

Households assessed as homeless/in priority need by local authority: 2006-07

Table 14

	All	Homeless		Priority homeless	
		Number	% of all households	Number	% of households assessed as homeless
Scotland	55,831	40,638	73	31,219	77
Aberdeen City	2,195	1,433	65	944	66
Aberdeenshire	1,541	1,017	66	715	70
Angus	1,302	898	69	684	76
Argyll & Bute	930	594	64	441	74
Clackmannanshire	1,081	695	64	569	82
Dumfries & Galloway	1,510	1,056	70	856	81
Dundee City	1,856	1,108	60	900	81
East Ayrshire	1,095	807	74	560	69
East Dunbartonshire	640	449	70	325	72
East Lothian	1,023	665	65	413	62
East Renfrewshire	364	282	77	199	71
Edinburgh, City of	5,253	4,962	94	4,023	81
Eilean Siar	272	159	58	104	65
Falkirk	1,853	1,371	74	988	72
Fife	4,109	2,659	65	1,745	66
Glasgow City	9,482	8,021	85	6,813	85
Highland	2,131	1,560	73	1,111	71
Inverclyde	694	486	70	337	69
Midlothian	602	575	96	484	84
Moray	795	562	71	301	54
North Ayrshire	1,453	1,085	75	876	81
North Lanarkshire	3,651	2,753	75	2,106	76
Orkney	182	121	66	84	69
Perth & Kinross	977	655	67	449	69
Renfrewshire	1,543	747	48	644	86
Scottish Borders, The	885	567	64	379	67
Shetland	216	129	60	89	69
South Ayrshire	656	388	59	291	75
South Lanarkshire	2,287	1,811	79	1,317	73
Stirling	1,055	485	46	326	67
West Dunbartonshire	2,226	1,112	50	1,001	90
West Lothian	1,972	1,426	72	1,145	80

Notes: Percentages are based on all households assessed in period, including lost contact/withdrawal/resolved. For this analysis, the category of 'homeless' includes potentially homeless.

In the case of repeat applications, the most recent assessment was selected. There is therefore no double counting within household.

APPLICATIONS ASSESSED AS POTENTIALLY HOMELESS

Applications assessed as potentially homeless by local authority: 2006-07

Table 15

	Applications assessed as			Applications assessed as potentially homeless		
	Potentially homelessness	Homeless or potentially homelessness	%	Became homeless before discharge of duty	Contact maintained until discharge of duty ¹	%
Scotland	5,769	42,099	14	1,397	4,031	35
Aberdeen City	82	1,466	6	12	68	18
Aberdeenshire	150	1,056	14	13	93	14
Angus	264	900	29	36	246	25
Argyll & Bute	36	615	6	5	21	24
Clackmannanshire	4	706	1	2	4	50
Dumfries & Galloway	301	1,072	28	49	275	18
Dundee City	764	1,119	68	55	542	10
East Ayrshire	127	849	15	69	102	68
East Dunbartonshire	52	456	11	5	6	83
East Lothian	105	681	15	60	79	76
East Renfrewshire	41	290	14	26	37	70
Edinburgh, City of	634	5,183	12	340	534	64
Eilean Siar	10	163	6	2	7	29
Falkirk	399	1,375	29	22	154	14
Fife	37	2,740	1	12	22	55
Glasgow City	744	8,609	9	165	416	40
Highland	401	1,610	25	84	236	36
Inverclyde	10	492	2	1	9	11
Midlothian	53	588	9	20	26	77
Moray	177	565	31	2	148	1
North Ayrshire	4	1,112	*	3	4	75
North Lanarkshire	186	2,794	7	9	96	9
Orkney	40	124	32	13	32	41
Perth & Kinross	343	658	52	197	204	97
Renfrewshire	47	781	6	1	41	2
Scottish Borders, The	19	573	3	10	14	71
Shetland	19	131	15	10	10	100
South Ayrshire	12	397	3	3	6	50
South Lanarkshire	395	1,870	21	85	333	26
Stirling	9	499	2	5	6	83
West Dunbartonshire	-	1,145	-	-	-	-
West Lothian	304	1,480	21	81	260	31

Note: All assessments within period.

1. Excludes cases assessed in the period which have not been closed by the end of the period.

ACTION TAKEN BY LOCAL AUTHORITIES

Local authority action by assessment decision: 2006-07

Table 16

Action taken by local authority	Assessment												All
	Priority unintentional		Priority intentional		Non-priority		Not homeless		Lost contact/withdrew		Resolved		
	Number	%	Number	%	Number	%	Number	%	Number	%	Number	%	
Social rented tenancy offered: accepted	14,842	51	241	18	6	98	2	-	-	-	-	15,770	
Social rented tenancy offered: not accepted	1,869	6	25	2	1	12	*	-	-	-	-	1,969	
Private tenancy offered: accepted	1,149	4	69	5	3	47	1	-	-	-	-	1,604	
Private tenancy offered: not accepted	14	*	4	*	*	2	*	-	-	-	-	41	
Temporary accommodation offered: accepted	1,687	6	254	19	16	215	4	-	-	-	-	3,721	
Temporary accommodation offered: not accepted	360	1	107	8	10	151	3	-	-	-	-	1,629	
Referred to other local authority	299	1	7	1	*	16	*	-	-	-	-	352	
Advice and assistance	1,441	5	323	24	41	3,178	66	-	-	-	-	8,942	
Other	2,058	7	83	6	6	710	15	-	-	-	-	3,470	
Lost contact/withdrawal/resolved before assessment	-	-	-	-	-	-	-	-	-	-	-	-	
Lost contact before duty discharged	5,402	19	211	16	16	422	9	7,365	100	4,159	100	11,524	
All applications actioned in period	29,121	100	1,324	100	9,750	4,851	100	7,365	100	4,159	100	56,570	

Note: All applications actioned during period, including lost contact/withdrawal/resolved prior to assessment or discharge of duty.

Local authority action by assessment decision and household type: 2006-07

Table 17

Table 17a

Action taken by local authority	Priority homeless						Non-priority homeless						Not homeless						All		
	Other household without children		Single parent		Other household with children		Other household without children		Single parent		Other household with children		Other household without children		Single parent		Other household with children				
	Single person	Other household without children	Single parent	Other household with children	Single person	Other household without children	Single parent	Other household with children	Single person	Other household without children	Single parent	Other household with children	Single person	Other household without children	Single parent	Other household with children	Single person	Other household without children		Single parent	Other household with children
Social rented tenancy offered	8,134	1,197	5,989	1,657	599	53	-	-	42	12	34	22	42	12	34	22	17,739				
Private tenancy offered	405	81	595	155	319	41	-	-	19	5	16	9	19	5	16	9	1,645				
Temporary accommodation offered	1,695	92	461	160	2,409	167	-	-	245	10	85	26	245	10	85	26	5,350				
Referred to other local authority	164	14	91	37	28	2	-	-	13	1	-	2	13	1	-	2	352				
Advice and assistance	787	101	694	182	3,613	387	-	-	1,610	295	869	404	1,610	295	869	404	8,942				
Other	1,382	93	532	141	571	57	-	-	363	46	188	113	363	46	188	113	3,486				
Lost contact before duty discharged	3,960	196	1,225	232	1,412	102	-	-	275	27	85	35	275	27	85	35	7,549				
All actioned during period	16,527	1,774	9,587	2,564	8,951	809	-	-	2,567	396	1,277	611	2,567	396	1,277	611	45,063				

Table 17b

Action taken by local authority	Priority homeless						Non-priority homeless						Not homeless						All		
	Other household without children		Single parent		Other household with children		Other household without children		Single parent		Other household with children		Other household without children		Single parent		Other household with children				
	Single person	Other household without children	Single parent	Other household with children	Single person	Other household without children	Single parent	Other household with children	Single person	Other household without children	Single parent	Other household with children	Single person	Other household without children	Single parent	Other household with children	Single person	Other household without children		Single parent	Other household with children
Social rented tenancy offered	49	67	62	65	7	7	-	-	2	3	3	4	2	3	3	4	39				
Private tenancy offered	2	5	6	6	4	5	-	-	1	1	1	1	1	1	1	1	4				
Temporary accommodation offered	10	5	5	6	27	21	-	-	10	3	7	4	10	3	7	4	12				
Referred to other local authority	1	1	1	1	-	-	-	-	1	-	-	-	1	-	-	-	1				
Advice and assistance	5	6	7	7	40	48	-	-	63	74	68	66	63	74	68	66	20				
Other	8	5	6	5	6	7	-	-	14	12	15	18	14	12	15	18	8				
Lost contact before duty discharged	24	11	13	9	16	13	-	-	11	7	7	6	11	7	7	6	17				
All actioned during period	100	100	100	100	100	100	-	-	100	100	100	100	100	100	100	100	100				

Note: All applications actioned during period, excluding lost contact/withdrawal/resolved prior to assessment.

Local authority action¹ by assessment decision and local authority area: 2006-07

Table 18

	All cases closed during period	Contact lost prior to discharge of duty %	Contact maintained until discharge of duty								
			Priority homeless			Non-priority homeless			Not homeless		
			Number	Accommodation offered		Number	Accommodation offered		Number	Accommodation offered	
				Permanent %	Temporary %		Permanent %	Temporary %		Permanent %	Temporary %
Scotland	56,570	34	24,837	73	10	8,246	12	31	4,429	4	8
Aberdeen City	2,128	38	806	79	20	448	2	96	71	1	6
Aberdeenshire	1,614	31	611	60	33	268	4	82	233	3	18
Angus ³	1,355	26	714	81	3	227	2	15	62	-	2
Argyll & Bute	923	51	306	79	7	111	16	46	35	6	3
Clackmannanshire	1,052	36	448	83	6	128	6	10	97	2	4
Dumfries & Galloway	1,490	34	665	85	10	175	5	50	141	4	18
Dundee City	1,886	51	733	92	*	174	22	8	20	5	-
East Ayrshire	1,191	33	485	85	5	196	71	15	115	3	7
East Dunbartonshire	585	20	244	73	12	54	43	2	169	6	9
East Lothian	1,111	16	417	79	8	259	9	26	253	3	2
East Renfrewshire	415	14	205	73	24	91	18	69	59	5	51
Edinburgh, City of	5,290	21	3,254	86	*	831	27	1	115	1	-
Eilean Siar	265	43	85	76	18	61	16	69	4	-	-
Falkirk	1,336	29	562	31	34	316	5	63	68	1	31
Fife	4,369	43	1,335	59	7	871	1	11	294	11	7
Glasgow City	10,284	41	4,685	58	19	824	9	29	572	1	2
Highland	2,211	33	913	77	17	413	8	77	145	3	20
Inverclyde	648	34	257	73	1	124	2	1	49	-	-
Midlothian	302	3	211	37	9	71	4	35	11	-	9
Moray	807	25	288	88	7	247	6	42	71	1	7
North Ayrshire	1,452	29	694	84	7	190	11	50	154	2	6
North Lanarkshire	3,525	17	2,018	80	6	546	25	31	368	5	23
Orkney	194	34	70	77	14	39	10	74	19	-	26
Perth & Kinross	1,004	32	432	86	2	181	2	3	65	11	-
Renfrewshire	1,598	44	519	85	3	88	26	24	284	1	1
Scottish Borders, The	758	34	270	80	5	149	5	34	81	2	1
Shetland	145	39	29	41	7	29	21	17	30	10	3
South Ayrshire	646	43	217	78	10	81	41	33	70	13	27
South Lanarkshire	2,452	22	1,180	84	*	513	9	1	218	2	1
Stirling	1,093	43	268	67	24	137	3	82	218	*	9
West Dunbartonshire	2,501	55	910	82	7	87	32	7	130	1	1
West Lothian	1,940	21	1,006	57	1	317	6	2	208	7	*
Scotland											
2002-03	45,539	26	20,643	59	23	9,161	8	25	4,008	6	8
2003-04	50,818	27	23,400	61	19	9,669	10	34	4,013	5	8
2004-05	54,198	34	22,724	72	8	8,473	10	29	4,497	4	8
2005-06	58,296	33	25,323	72	10	8,896	10	32	4,594	4	8

Notes: Data on actions reported for cases closed during period, excluding resolved prior to assessment. A more detailed version of this table is available on the Housing Statistics website.

1. Actions reported here relate to offers of accommodation by local authorities. Other actions taken by local authorities include referral to another local authority or the provision of advice and assistance.

Length of time between application and last action by assessment decision: 2006-07
Table 19
Table 19a Priority homeless

Percentages (all applications in assessment category)

	Completion time				Total
	Within one month	Between one and two months	Between two and four months	More than four months	
All applications	2,294	3,513	6,651	12,381	24,839
All last actions	9	14	27	50	100
Permanent accommodation offered	4	9	20	39	73
Temporary accommodation offered	2	2	2	3	10
Referred to other local authority	*	*	*	*	1
Advice and assistance	1	1	2	3	7
Other	1	1	2	4	9

Table 19b Non-priority homeless

	Completion time				Total
	Within one month	Between one and two months	Between two and four months	More than four months	
All applications	2,243	3,301	1,858	844	8,246
All last actions	27	40	23	10	100
Permanent accommodation offered	3	3	4	3	12
Temporary accommodation offered	8	13	7	3	31
Referred to other local authority	*	*	-	-	*
Advice and assistance	14	21	10	4	49
Other	2	3	2	1	8

Table 19c Not homeless

	Completion time				Total
	Within one month	Between one and two months	Between two and four months	More than four months	
All applications	1,913	1,367	822	327	4,429
All last actions	43	31	19	7	100
Permanent accommodation offered	1	1	1	1	4
Temporary accommodation offered	3	3	2	1	8
Referred to other local authority	*	*	*	*	*
Advice and assistance	34	21	12	5	72
Other	6	6	3	1	16

Note: All applications actioned during period, excluding lost contact/withdrawal/resolved prior to assessment or discharge of duty.

HOUSEHOLDS IN TEMPORARY ACCOMMODATION

Households in temporary accommodation by accommodation type as at 31 March: 1995 to 2007 Table 20

		Social sector accommodation ¹	Hostel ²	Bed & Breakfast	Other ³	Total	Households with dependent children ⁴	
							Number	% of total
1995	as at 31 March	1,851	1,648	449	80	4,028
1996	as at 31 March	1,884	1,776	454	100	4,214
1997	as at 31 March	1,741	1,562	355	114	3,772
1998	as at 31 March	1,859	1,465	360	80	3,764
1999	as at 31 March	1,855	1,543	413	53	3,864
2000	as at 31 March	1,826	1,608	500	61	3,995
2001	as at 31 March	1,968	1,512	502	78	4,060	1,438	35
2002	as at 31 March	2,152	1,363	569	69	4,153	1,329	32
2003	as at 31 March	3,012	1,421	914	141	5,488	1,618	29
2004	as at 31 March	3,579	1,657	1,206	132	6,574	2,031	31
2005	as at 31 March	4,205	1,619	1,556	159	7,539	2,373	31
2006	as at 31 March	<i>4,870</i>	<i>1,521</i>	<i>1,534</i>	416	8,341	2,858	34
2007	as at 31 March	5,423	1,533	1,565	643	9,164	3,235	35

Notes: Figures from March 1995 to March 1996 include estimates for Fife council.

1. Includes Glasgow Housing Association stock from 2003, and all other housing associations from June 2005 onward.
2. The majority of hostel accommodation is accounted for by Glasgow - see the notes and definitions section.
3. The category 'other' includes mainly private landlords. Prior to June 1999 the figures may also include an unknown number of local authority-owned chalets or mobile homes.
4. From June 2005, this includes households with pregnant women. Figures from this point onward are therefore not strictly comparable with previous ones.

Households with children by accommodation type as at 31 March: 2002 to 2007 Table 21

Household type		Social sector accommodation ¹		Hostel ²		Bed & Breakfast		Other ³		Total	
		Number	%	Number	%	Number	%	Number	%	Number	%
All households											
2002	as at 31 March	2,152	52	1,363	33	569	14	69	2	4,153	100
2003	as at 31 March	3,012	55	1,421	26	914	17	141	3	5,488	100
2004	as at 31 March	3,579	54	1,657	25	1,206	18	132	2	6,574	100
2005	as at 31 March	4,205	56	1,619	21	1,556	21	159	2	7,539	100
2006	as at 31 March	<i>4,870</i>	58	<i>1,521</i>	18	<i>1,534</i>	18	416	5	8,341	100
2007	as at 31 March	5,423	59	1,533	17	1,565	17	643	7	9,164	100
Households with dependent children⁴											
2002	as at 31 March	1,107	83	103	8	94	7	25	2	1,329	100
2003	as at 31 March	1,356	84	73	5	109	7	80	5	1,618	100
2004	as at 31 March	1,708	84	115	6	151	7	57	3	2,031	100
2005	as at 31 March	1,997	84	109	5	167	7	100	4	2,373	100
2006	as at 31 March	<i>2,410</i>	84	<i>114</i>	4	134	5	200	7	2,858	100
2007	as at 31 March	2,678	83	124	4	88	3	345	11	3,235	100
Total number of dependent children											
2002	as at 31 March	2,046	86	156	7	142	6	45	2	2,389	100
2003	as at 31 March	2,592	86	121	4	185	6	128	4	3,026	100
2004	as at 31 March	3,284	86	215	6	234	6	100	3	3,833	100
2005	as at 31 March	3,727	86	194	4	262	6	168	4	4,351	100
2006	as at 31 March	<i>4,327</i>	87	<i>158</i>	3	166	3	316	6	4,967	100
2007	as at 31 March	4,821	85	171	3	121	2	592	10	5,705	100

1. Includes Glasgow Housing Association stock from 2003, and all other housing associations from June 2005 onward.
2. The majority of hostel accommodation was accounted for by Glasgow - see the notes and definitions section.
3. The category 'other' includes mainly private landlords.
4. From June 2005, this includes households with pregnant women. Figures from this point onward are therefore not strictly comparable with previous ones.

Households with dependent children or pregnant women by accommodation type and local authority: as at 31 March 2007 Table 22

	Total number of households				Number of households with children or pregnant women				Total number of children						
	Social sector ¹	Hostel ²	Bed & Breakfast	Other ³	Total	Social sector ¹	Hostel ²	Bed & Breakfast	Other ³	Total	Social sector ¹	Hostel ²	Bed & Breakfast	Other ³	Total
Scotland	5,423	1,533	1,565	643	9,164	2,678	124	88	345	3,235	4,821	171	121	592	5,705
Aberdeen city	38	40	65	-	143	23	3	-	-	26	50	5	-	-	55
Aberdeenshire	135	21	87	3	246	106	11	7	3	127	191	17	9	7	224
Angus	100	-	3	-	103	34	-	-	-	34	86	-	-	-	86
Argyll & Bute	42	18	72	80	212	14	-	2	40	56	25	-	-	62	87
Clackmannanshire	80	-	40	14	134	50	-	6	2	58	60	-	7	2	69
Dumfries & Galloway	106	71	55	30	262	73	5	-	9	87	137	4	-	11	152
Dundee City	112	17	14	11	154	77	4	3	8	92	155	4	3	14	176
East Ayrshire	49	39	-	11	99	19	-	-	10	29	36	-	-	16	52
East Dunbartonshire	101	-	21	-	122	67	-	1	-	68	134	-	4	-	138
East Lothian	108	31	43	10	192	79	-	3	9	91	111	-	3	18	132
East Renfrewshire	24	-	1	6	31	10	-	-	2	12	19	-	-	5	24
Edinburgh, City of	373	-	222	-	595	185	-	-	-	185	282	-	-	-	282
Eilean Siar	42	-	19	-	61	15	-	-	-	15	24	-	-	-	24
Falkirk	118	32	78	5	233	73	-	-	5	78	143	-	-	7	150
Fife	321	46	63	-	430	163	16	12	-	191	340	19	14	-	373
Glasgow City	1,453	439	190	12	2,094	696	-	7	5	708	1,279	-	13	10	1,302
Highland	132	36	150	50	368	67	3	2	18	90	142	6	2	36	186
Inverclyde	51	18	44	-	113	33	-	-	-	33	50	-	-	-	50
Midlothian	70	29	85	126	310	58	3	18	107	186	89	3	29	172	293
Moray	26	53	23	16	118	15	8	5	5	33	30	8	6	7	51
North Ayrshire	398	332	41	-	771	133	48	4	-	185	243	71	5	-	319
North Lanarkshire	409	18	-	10	437	147	-	-	1	148	289	-	-	1	290
Orkney	55	-	1	-	56	36	-	-	-	36	45	-	-	-	45
Perth & Kinross	106	32	66	3	207	79	-	14	-	93	147	-	18	-	165
Renfrewshire	116	1	49	-	166	79	-	-	-	79	127	-	-	-	127
Scottish Borders, The	63	-	23	-	86	28	-	-	-	28	55	-	-	-	55
Shetland	72	31	1	4	108	27	-	-	3	30	52	-	-	5	57
South Ayrshire	92	45	63	34	234	44	4	-	12	60	80	5	-	24	109
South Lanarkshire ⁴	113	69	34	149	365	42	3	4	75	124	70	3	8	149	230
Stirling	40	50	12	41	143	29	15	-	12	56	52	25	-	18	95
West Dunbartonshire	215	23	-	7	245	48	-	-	3	51	89	-	-	4	93
West Lothian	263	42	-	21	326	129	1	-	16	146	189	1	-	24	214

1. Includes local authority and housing association stock.

2. The majority of hostel accommodation was accounted for by Glasgow - see the notes and definitions section.

3. The category 'other' includes mainly private landlords.

4. Accommodation in 'other' category consists of property leased by the local authority to provide temporary accommodation for homeless applicants.

Households with children in temporary accommodation by local authority area: as at 31 March 2006 to 31 March 2007

Table 23

	Households in temporary accommodation							Households with children in temporary accommodation ¹							Percentage of all households with children ²
	Number							Number							
	31-Mar-06	30-Jun-06	30-Sep-06	31-Dec-06	31-Mar-07	31-Mar-06	30-Jun-06	30-Sep-06	31-Dec-06	31-Mar-07	31-Mar-06	30-Jun-06	30-Sep-06	31-Dec-06	
Scotland	8,341	8,331	8,579	8,626	9,164	2,858	2,872	3,054	2,954	3,235	0.40	0.40	0.54		
Aberdeen City	122	149	144	122	143	12	19	25	24	26	0.14	0.14	0.12		
Aberdeenshire	194	200	226	213	246	108	106	108	112	127	0.25	0.25	0.44		
Angus	138	89	102	105	103	36	28	28	29	34	0.21	0.27	0.27		
Argyll & Bute	199	182	202	200	212	58	47	65	61	56	0.52	0.52	0.56		
Clackmannanshire	108	109	119	110	134	26	27	39	41	58	0.61	0.61	0.94		
Dumfries & Galloway	238	242	238	253	262	61	75	73	77	87	0.39	0.39	0.53		
Dundee City	198	163	186	168	154	105	63	101	96	92	0.23	0.23	0.58		
East Ayrshire	100	119	89	92	99	27	30	28	27	29	0.19	0.19	0.19		
East Dunbartonshire	116	113	116	143	122	67	68	59	64	68	0.29	0.29	0.53		
East Lothian	188	184	216	175	192	97	93	111	73	91	0.48	0.48	0.80		
East Renfrewshire	25	29	42	35	31	4	15	21	15	12	0.09	0.09	0.10		
Edinburgh, City of	557	563	608	559	595	187	197	210	205	185	0.28	0.28	0.40		
Eilean Siar	48	39	46	50	61	13	11	9	11	15	0.53	0.53	0.54		
Falkirk	192	215	218	215	233	73	79	79	76	78	0.35	0.35	0.42		
Fife	369	366	378	376	430	158	173	183	169	191	0.27	0.27	0.45		
Glasgow City	2,168	2,155	2,126	2,112	2,094	739	736	764	753	708	0.76	0.76	1.03		
Highland	316	330	359	372	368	104	121	111	92	90	0.38	0.38	0.37		
Inverclyde	97	87	85	102	113	55	43	39	39	33	0.31	0.31	0.33		
Midlothian	131	153	185	204	310	35	46	65	61	186	0.93	0.93	1.88		
Moray	101	85	100	79	118	33	29	29	23	33	0.31	0.31	0.33		
North Ayrshire	528	604	647	711	771	118	135	144	166	185	1.27	1.27	1.13		
North Lanarkshire	368	388	419	418	437	152	150	162	161	148	0.31	0.31	0.35		
Orkney	60	52	58	57	56	28	20	33	36	36	0.63	0.63	1.63		
Perth & Kinross	181	171	174	204	207	63	68	84	88	93	0.33	0.33	0.61		
Renfrewshire	167	167	141	162	166	65	65	60	69	79	0.21	0.21	0.38		
Scottish Borders	46	46	60	77	86	14	21	24	20	28	0.17	0.17	0.23		
Shetland	119	113	113	102	108	30	30	34	30	30	1.14	1.14	1.18		
South Ayrshire	212	219	217	206	234	72	70	65	53	60	0.46	0.46	0.48		
South Lanarkshire	432	367	315	319	365	132	134	97	70	124	0.28	0.28	0.33		
Stirling	139	140	157	137	143	52	51	59	53	56	0.38	0.38	0.57		
West Dunbartonshire	215	213	207	246	245	42	30	51	56	51	0.60	0.60	0.45		
West Lothian	269	279	286	302	326	92	92	94	104	146	0.46	0.46	0.65		

1. From June 2005, this includes households with children or pregnant women. Figures from this point onward are therefore not strictly comparable with previous ones.
 2. Percentages are calculated using the 2004-based projection for 2006.

Breaches of Unsuitable Accommodation Order by local authority area as at the end of the quarter: 2005 to 2007 **Table 24**

	As at 30 June 2005	As at 30 September 2005	As at 31 December 2005	As at 31 March 2006	As at 30 June 2006	As at 30 September 2006	As at 31 December 2006	As at 31 March 2007
Scotland	47	58	33	55	43	63	49	34
Aberdeen City	1	2	1	1	5	2	-	1
Aberdeenshire	-	-	1	3	1	1	-	4
Angus	-	-	1	-	-	-	-	-
Argyll & Bute	13	10	7	6	1	9	11	2
Clackmannanshire	2	-	1	2	1	7	7	10
Dumfries & Galloway	-	-	-	-	-	-	-	-
Dumfries City	6	6	9	1	16	3	5	-
East Ayrshire	-	-	-	-	-	-	-	-
East Dunbartonshire	-	1	-	-	-	-	-	-
East Lothian	1	9	3	6	1	10	-	-
East Renfrewshire	-	-	-	-	-	-	-	-
Edinburgh, City of	-	-	-	-	-	-	-	-
Eilean Siar	1	-	-	-	-	-	-	-
Falkirk	-	-	-	-	-	-	-	-
Fife	-	-	-	-	-	-	-	5
Glasgow City	5	5	-	7	1	8	-	-
Highland	7	12	5	5	9	1	3	2
Inverclyde	-	-	-	-	-	-	-	-
Midlothian	7	9	-	7	2	15	12	4
Moray	2	3	-	4	1	2	2	2
North Ayrshire	-	-	-	-	-	-	-	-
North Lanarkshire	-	-	-	-	-	-	-	-
Orkney	-	-	-	-	-	-	-	-
Perth & Kinross	-	-	5	13	5	3	8	4
Renfrewshire	2	-	-	-	-	-	-	-
Scottish Borders	-	-	-	-	-	2	1	-
Shetland	-	-	-	-	-	-	-	-
South Ayrshire	-	-	-	-	-	-	-	-
South Lanarkshire	-	-	-	-	-	-	-	-
Stirling	-	1	-	-	-	-	-	-
West Dunbartonshire	-	-	-	-	-	-	-	-
West Lothian	-	-	-	-	-	-	-	-

HOUSING OUTCOMES

Housing outcome by assessment decision and household type: 2006-07

Table 25

Table 25a Priority homeless

	Single person		Other household without children		Single parent		Other household with children		All	
	Number	%	Number	%	Number	%	Number	%	Number	%
Permanent accommodation secured	8,469	67	1,283	81	6,448	77	1,810	78	18,010	73
Temporary accommodation secured	973	8	17	1	29	*	6	*	1,025	4
Returned to previous/present accommodation	708	6	74	5	624	7	121	5	1,527	6
Other (known)	1,704	14	131	8	837	10	280	12	2,952	12
Not known	715	6	73	5	424	5	115	5	1,327	5
Applications completed during period	12,569	100	1,578	100	8,362	100	2,332	100	24,841	100

Table 25b Non-priority homeless

	Single person		Other household without children		Single parent		Other household with children		All	
	Number	%	Number	%	Number	%	Number	%	Number	%
Permanent accommodation secured	1,088	14	116	16	-	-	-	-	1,204	15
Temporary accommodation secured	491	7	21	3	-	-	-	-	512	6
Returned to previous/present accommodation	987	13	125	18	-	-	-	-	1,112	13
Other (known)	2,145	28	186	26	-	-	-	-	2,331	28
Not known	2,830	38	259	37	-	-	-	-	3,089	37
Applications completed during period	7,541	100	707	100	-	-	-	-	8,248	100

Table 25c Not homeless

	Single person		Other household without children		Single parent		Other household with children		All	
	Number	%	Number	%	Number	%	Number	%	Number	%
Permanent accommodation secured	111	5	26	7	91	8	52	9	280	6
Temporary accommodation secured	22	1	3	1	4	*	1	*	30	1
Returned to previous/present accommodation	1,499	65	274	74	883	74	434	75	3,090	70
Other (known)	406	18	42	11	130	11	60	10	638	14
Not known	254	11	24	7	84	7	29	5	391	9
Applications completed during period	2,292	100	369	100	1,192	100	576	100	4,429	100

Note: All applications with outcomes during period, excluding lost contact/withdrawal/resolved prior to assessment or discharge of duty.

Housing outcome by assessment decision and local authority area: 2006-07
Table 26

	Priority homeless			Non-priority homeless			Not homeless			All
	Number assessed	Accommodation secured ¹		Number assessed	Accommodation secured ¹		Number assessed	Accommodation secured ¹		
		Permanent	Temporary		Permanent	Temporary		Permanent	Temporary	
		%	%		%	%		%	%	
Scotland	24,841	73	4	8,248	15	6	4,429	6	1	37,518
Aberdeen City	806	65	-	448	2	-	71	3	-	1,325
Aberdeenshire	611	73	-	268	9	1	233	4	-	1,112
Angus	714	66	-	227	3	-	62	2	-	1,003
Argyll & Bute	306	77	1	111	29	-	35	9	-	452
Clackmannanshire	448	78	-	128	6	-	97	3	-	673
Dumfries & Galloway	665	82	-	175	10	1	141	6	1	981
Dundee City	733	88	-	174	18	4	20	5	-	927
East Ayrshire	485	77	-	196	68	1	115	5	-	796
East Dunbartonshire	244	70	1	54	44	4	169	9	1	467
East Lothian	417	78	1	259	10	3	253	4	-	929
East Renfrewshire	205	68	-	91	24	-	59	10	-	355
Edinburgh, City of	3,254	85	3	831	27	23	115	3	9	4,200
Eilean Siar	85	79	-	61	34	-	4	-	-	150
Falkirk	562	74	5	316	16	6	68	6	1	946
Fife	1,337	74	1	872	2	3	294	16	-	2,503
Glasgow City	4,684	56	17	824	9	18	572	1	1	6,080
Highland	913	83	-	413	15	4	145	6	1	1,471
Inverclyde	257	60	1	124	3	1	49	16	-	430
Midlothian	211	39	9	71	4	24	11	-	9	293
Moray	288	89	-	247	14	2	71	6	-	606
North Ayrshire	694	76	5	190	12	20	154	4	3	1,038
North Lanarkshire	2,020	75	-	546	23	-	368	14	-	2,934
Orkney	70	81	6	39	41	5	19	11	-	128
Perth & Kinross	432	78	-	181	4	2	65	11	-	678
Renfrewshire	519	79	-	88	28	-	284	2	-	891
Scottish Borders, The	270	82	-	149	8	1	81	9	-	500
Shetland	29	52	-	29	31	-	30	13	-	88
South Ayrshire	217	79	1	81	47	-	70	19	-	368
South Lanarkshire	1,181	75	-	514	10	-	218	3	-	1,913
Stirling	268	68	1	137	4	4	218	1	-	623
West Dunbartonshire	910	76	-	87	44	-	130	3	-	1,127
West Lothian	1,006	66	1	317	9	4	208	11	1	1,531
Scotland										
2002-03	20,643	55	15	9,161	9	18	4,008	9	2	33,812
2003-04	23,400	57	14	9,669	12	15	4,013	9	1	37,082
2004-05	22,724	69	4	8,473	13	8	4,497	8	1	35,694
2005-06	25,322	70	5	8,896	12	8	4,594	7	1	38,812

Notes: All applications actioned during period, excluding lost contact/withdrawal/resolved prior to assessment or discharge of duty. A more detailed version of this table is available on the Housing Statistics website.

1. Does not include return to previous/present accommodation.

SUPPLEMENTARY TABLES

Detailed reason for applying: 2006-07

Table A

	Household type								All
	Single person male	Single person female	Single parent male	Single parent female	Couple without children	Couple with children	Other household without children	Other household with children	
Parents cannot accommodate	5,344	3,602	412	1,621	854	499	131	53	12,516
Relatives cannot accommodate	2,422	1,226	269	501	295	160	81	41	4,995
Friends cannot accommodate	2,682	1,054	213	311	195	113	48	14	4,630
Dispute with partner: violent	636	1,747	122	2,669	25	41	79	134	5,453
Dispute with partner: non-violent	3,145	950	905	1,654	21	21	87	105	6,888
Dispute with guardian: violent	263	368	16	138	29	24	14	11	863
Young and affected by violence (not directly)	20	46	2	27	4	2	.	.	101
Loss of local authority tenancy: arrears	285	149	26	169	33	57	14	23	756
Loss of local authority tenancy: anti-social	19	7	4	18	4	4	1	2	59
Loss of local authority tenancy: other	214	88	24	74	21	19	5	4	449
Loss of other social sector tenancy: arrears	167	98	20	127	23	52	15	21	523
Loss of other social sector tenancy: anti-social	29	10	.	6	.	3	1	2	51
Loss of other social sector tenancy: other	187	78	11	101	18	48	5	11	459
Loss of private tenancy: arrears	281	110	23	255	58	111	34	29	901
Loss of private tenancy: anti-social	38	7	1	23	4	7	3	2	85
Loss of private tenancy: other	1,044	561	142	929	333	526	136	125	3,796
Mortgage default	210	106	48	151	105	188	60	45	913
Forced division and sale (matrimonial)	151	99	73	382	18	31	55	49	858
Loss of service tenancy (armed forces)	134	36	13	10	63	76	9	9	350
Expiry of short assured tenancies	163	119	30	210	78	158	26	38	822
Emergency (fire, flood, storm etc.)	128	43	6	45	26	31	10	8	297
House condition (such as closing order)	33	14	3	18	14	27	7	4	120
Discharged from prison	2,107	153	49	20	42	3	6	2	2,382
Discharged from hospital	373	116	13	13	6	1	3	2	527
Lost accommodation in hostel/lodgings/hotel	707	162	5	15	35	8	5	1	938
Gave up secure accommodation	309	159	25	118	74	72	14	9	780
Overcrowding	66	68	23	123	28	73	7	14	402
Harassment: racial	32	7	1	14	7	21	4	3	89
Harassment: other	435	240	36	429	84	187	30	32	1,473
Fleeing non-domestic violence	526	212	57	422	108	197	43	60	1,625
Unsafe to return (none of the above)	227	161	13	168	44	74	14	14	715
Other	2,015	818	148	498	273	339	112	77	4,280
All reasons	24,392	12,614	2,733	11,259	2,922	3,173	1,059	944	59,096

Notes: All applications within period.

Individuals in households by gender and age:

2006-07

Table B

	Female	Male	All
Adults			
16-24	13,448	10,527	23,975
25-retirement	17,252	22,213	39,465
Retirement plus	866	651	1,517
<i>All adults</i>	31,566	33,391	64,957
Children			
0-4	5,814	6,160	11,974
5-11	5,269	5,517	10,786
12-15	2,600	2,603	5,203
16-18	922	939	1,861
<i>All children</i>	14,605	15,219	29,824
All households applying in period			56,275

Notes: All households applying in period.

Household type and characteristics of main applicant: 2006-07
Table C

Household type	Main applicant										All households
	Male 16-17	Male 18-20	Male 21-24	Male 25-64	Male 65+	Female 16-17	Female 18-20	Female 21-24	Female 25-59	Female 60+	
Single person male	1,491	2,580	3,117	15,089	450						22,727
Single person female						2,198	2,486	1,776	4,990	560	12,010
Single parent male	17	64	247	2,347	1						2,676
Single parent female						259	1,154	1,952	7,565	12	10,942
Couple without children	46	243	234	803	106	160	392	288	527	55	2,854
Couple with children	5	70	178	1,047	6	26	266	387	1,109	-	3,094
Other household without children	12	44	38	254	18	28	53	32	525	38	1,042
Other household with children	-	4	3	203	3	5	10	43	657	2	930
All main applicants	1,571	3,005	3,817	19,743	584	2,676	4,361	4,478	15,373	667	56,275

Notes: All households applying in period.

5. NOTES AND DEFINITIONS

5.1 Statistics on persons applying to local authorities under the Homeless Persons legislation are collected using two returns:

- the homeless household case return (HL1), which collects details of each applicant household
- the quarterly summary return (HL2) which collects aggregate information on
 - a. the number of applications received during the quarter (since 1990)
 - b. the number of cases concluded during the quarter (since 1987)
 - c. the number of households in various types of temporary accommodation at the end of the quarter (including households with dependent children from June 2001, and households in unsuitable accommodation from June 2005).

These returns are submitted to the Scottish Government by local authorities, who have statutory duties under the legislation.

5.2 Authorities complete an HL1 return for each household which presents itself to the authority as homeless or potentially homeless. The unit of the return is the household, not the person. **Prior to December 2001, a paper-based data collection system was used where a household was counted each time it applied – so that one household could appear in the statistics on more than one occasion during the year. Under this system, it was not possible to identify these repeat applications. The electronic system introduced in December 2001 allows the compilation of statistics on individual households and the linking of repeat applications made by the same household.** The returns include households that apply to the authority even if the authority does not regard them as qualifying for assistance under the legislation. It should be noted, however, that households that do not approach an authority for assistance, for example persons sleeping rough who consider there is little likelihood of the authority providing them with accommodation, are not included in the statistics.

5.3 Under the electronic system, HL1 returns are submitted to the Scottish Government on a quarterly basis, and are updated on a continuous basis as the application progresses until the case is completed. A case is completed when either:

- a. the authority secures accommodation for the applicant
- b. the authority transfers the household to another authority
- c. the authority determines that no action is necessary under the legislation
- d. contact with the applicant is lost, which is considered to have happened 28 days after the date of the last interview.

5.4 Cases take varying lengths of time to reach conclusion, and some tend to take a considerable number of months. **For this reason, the information presented in this bulletin may differ from previous publications since figures are updated as more information becomes available.**

5.5 Most of the information presented in this bulletin is derived from the HL1 return. However, prior to December 2001, we know that the HL1 returns did not represent all of the households that applied in each year, either because returns failed to be submitted, or because cases had not reached a conclusion. The number of HL1 returns received for any year was usually less than the number of applicant households recorded through the HL2 return, even allowing time for cases to reach conclusion. Therefore, for data between 1992-93 and December 2001, figures were grossed up to the total number of applications recorded on the HL2 returns. It was assumed that the cases which were not been submitted showed the same characteristics as those that had, for example that the distribution of household types among those cases not returned was the same as among those cases which had been returned.

5.6 Hostels, as temporary accommodation under the Homeless Persons legislation, are used mainly by Glasgow. In fact, almost all households in hostels in Glasgow have been placed there by the authority under the Homeless Persons legislation. In other authorities, particularly in the cities, there are many households in hostels that have not been placed there by the local authority under the Homeless Persons legislation. Consequently, they are not recorded in the statistics.

5.7 Households with dependent children include those aged under 16 who are in full time education, those aged 18 or less who are receiving or about to begin full-time education or training, and those who are for some other reason unable to support themselves.

Additional tables may be obtained from Housing Statistics on request. See back cover for contact details. Further reference material is available from the Housing Statistics website:

<http://www.scotland.gov.uk/Topics/Statistics/Browse/Housing-Regeneration>.

This page is intentionally blank

SCOTTISH GOVERNMENT STATISTICAL SERVICES

OUR ROLE

The aim of the Statistical Service is to provide relevant and reliable information, analysis and advice that meet the needs of government, business and the people of Scotland.

OBJECTIVES

1. **To produce statistics and analysis relevant to user needs by**
 - Developing the range of statistics and analysis we produce;
 - Where practicable improving timeliness;
 - Providing more statistics disaggregated by age, gender and ethnicity;
 - Developing more data for small areas through the Neighbourhood Statistics project;
 - Contributing to production of comparable statistics across the UK and internationally.
2. **To ensure effective use of our statistics by**
 - Contributing more directly to policy processes inside and where possible outside government;
 - Improving access to and presentation of data and analysis;
 - Improving the advice provided on statistics.
3. **To work effectively with users and providers by**
 - Maintaining arrangements to consult and involve users and providers
 - Involving users and providers in planning developments in outputs and processes
4. **To develop the quality of statistics by**
 - Assuring and improving quality as an integral part of data collection and analysis and through regular reviews in line with National Statistics quality strategy;
 - Developing statistical methods, systems and classifications;
 - Working with the rest of the Government Statistical Service to develop joint approaches/solutions where appropriate.
5. **To assure the integrity of statistics by**
 - Maintaining and promoting integrity through implementation of the National Statistics Code of Practice and related protocols;
 - Safeguarding the confidentiality of data subjects.
6. **To ensure the efficient and effective delivery of statistics products and services by**
 - Making best use of all sources including administrative sources,
 - Minimising the burden on data providers through Survey Monitoring & Advice;
 - Ensuring value for money;
 - Making best use of Information and Communications Technology;
 - Working with other analysts;
 - Ensuring effective communication within the Statistician Group.
7. **To develop our workforce and competences**
 - Ensuring recruitment of staff with the necessary skills and potential;
 - Ensuring development of expertise amongst existing staff;
 - Promoting and upholding the standards of the statistics profession.

This is a National Statistics publication

This is a National Statistics publication. It has been produced to high professional standards set out in the National Statistics Code of Practice and Release Practice Protocol. http://www.statistics.gov.uk/about_ns/cop/default.asp

These statistics undergo regular quality assurance reviews to ensure that they meet customer needs. They are produced free from any political interference.

Correspondence and enquiries

Enquiries on Scottish Government Housing Statistics should be addressed to:

Chris Gosling
Communities Analytical Services Division
Area 1-F Dockside, Victoria Quay
Edinburgh, EH6 6QQ
Telephone: (0131) 244 7232; Fax: (0131) 244 0446
e-mail: housingstatistics@scotland.gsi.gov.uk

General enquiries on Scottish Government statistics can be addressed to:

Kevin Meenan
Office of the Chief Statistician
4 Floor East Rear, St Andrews House
EDINBURGH EH1 3DG
Telephone: (0131) 244 0442; Fax: (0131) 244 0335
e-mail: statistics.enquiries@scotland.gsi.gov.uk

Advice on specific areas of Scottish Government statistical work can be obtained from staff at the telephone numbers given below:

Scottish Government Statistics contacts

Schools – qualifications	(0131) 244 0313
Schools – pupils and teachers	(0131) 244 0309
Further and Higher Education	(0141) 242 0273
The Economy	(0131) 244 2234
Labour market	(0141) 242 5446
Business	(0141) 242 5446
Income, Tax and Benefits	(0131) 244 2583
Local government finance	(0131) 244 7033
Environment, planning & local government staffing	(0131) 244 0445
Equality	(0131) 244 0442
Housing	(0131) 244 7231
Transport	(0131) 244 7255
Health	(0131) 244 3432
Community Care	(0131) 244 3777
Social Justice	(0131) 244 0442
Scottish Government personnel	(0131) 244 3926
Agricultural census and labour force	(0131) 244 6150
Fisheries	(0131) 244 6441
Courts and law	(0131) 244 2227
Recorded crime and prisons	(0131) 244 2225

Other contacts for Scottish statistics

Forestry Commission	(0131) 314 6337
The Scottish Funding Councils for Higher and Further Education	(0131) 313 6575
General Register Office for Scotland - Vital statistics and publications - Population statistics, census statistics or digital boundary products	(0131) 314 4243 (0131) 314 4254
Communities Scotland Registered Social Landlord statistics	(0131) 479 5723

For **general enquiries about National Statistics** in the United Kingdom Government contact the National Statistics Public Enquiry Service on
020 7533 5888
minicom: 01633 812399
e-mail: info@statistics.gov.uk
Fax: 01633 652747
Letters: room DG/18, 1 Drummond Gate,
LONDON SW1V 2QQ

You can also find National Statistics on the internet - go to **www.statistics.gov.uk**

If you would like to be consulted about new or existing statistical collections or to receive notification of forthcoming statistical publications, please register your statistical interest on the Scottish Government ScotStat web site at **www.scotland.gov.uk/scotstat**

Current staff names, e-mail addresses and the publications listed below as well as a range of other statistical publications can be found on the Scottish Government Web site at **www.scotland.gov.uk/stats**.

Further information on the General Register Office for Scotland is available on the website **www.gro-scotland.gov.uk**

Most recent statistical publications relating to the Natural and Built Environment theme (housing only)

Ref. no.	Title	Last published	Price
HSG/2006/3	Housing Trends in Scotland : Quarter ending 30 September 2005	February 2006	£2
HSG/2006/4	Housing Trends in Scotland : Quarter ending 31 December 2005	May 2006	£2
HSG/2006/5	Housing Trends in Scotland : Quarter ending: 31 March 2006	August 2006	£2
HSG/2006/6	Operation of the Homeless Persons Legislation in Scotland: National and Local Authority Analyses 2005-06	September 2006	£2
HSG/2006/7	Housing Trends in Scotland : Quarter ending 30 June 2006	November 2006	£2
HSG/2007/1	Local Authority Housing Income and Expenditure 2004-045to 2006-07	January 2007	£2
HSG/2007/2	Housing Trends in Scotland : Quarter ending 30 September 2006	February 2007	£2
HSG/2007/4	Supporting People Client Statistics 2005-06	March 2007	

Additional copies of these publications may be purchased from **Scottish Government Publication Sales, Blackwell's Bookshop, 53 South Bridge, Edinburgh, EH1 1YZ**, Telephone: (0131) 662 8283, Fax: (0131) 557 8149. Cheques should be made payable to 'Blackwell's Bookshop'.

Complaints and suggestions

If you are not satisfied with our service, please write to the Chief Statistician, Mr Rob Wishart, 3 Floor East Rear, St Andrews House, Edinburgh, EH1 3DG, Telephone: (0131) 244 0302, e-mail rob.wishart@scotland.gov.uk. We also welcome any comments or suggestions that would help us to improve our standards of service.

ISSN 0264-1143
ISBN 978-0-7559-6825-1

Price £2.00

ISBN 978-0-7559-6825-1



9 780755 968251

Crown Copyright
Brief extracts from the Crown Copyright material in this publication may be reproduced provided the source is fully acknowledged.