

Statistics Release

FREE PERSONAL AND NURSING CARE SCOTLAND 2002-03 to 2005-06

1. Introduction

This Statistics Release presents the latest figures for free personal care (FPC) and free nursing care (FNC).

Free personal and nursing care (FPNC) was introduced in Scotland on 1 July 2002.

Prior to 1 July 2002, people could be charged for personal care services provided in their own home and many residents in Care Homes had to fully fund their care from their own income and savings.

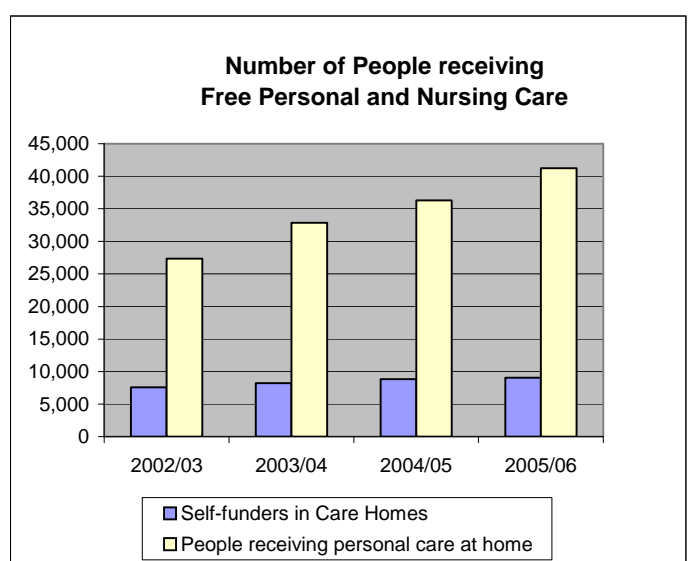
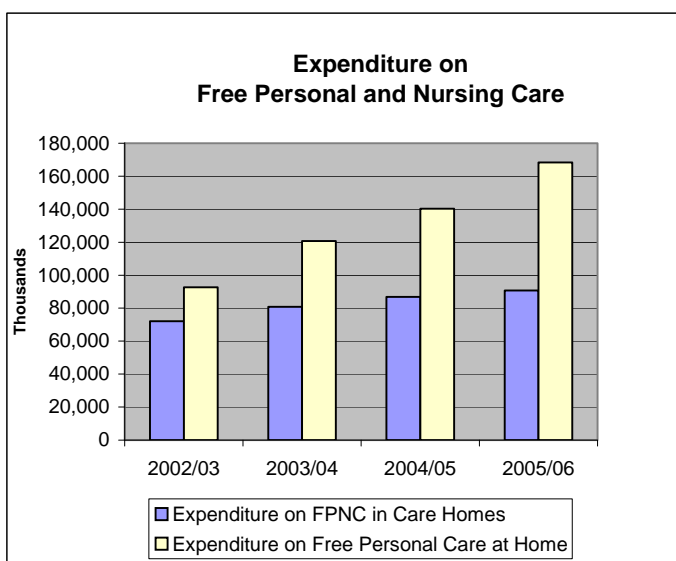
Since July 2002:

- people aged 65 and over can no longer be charged for personal care services provided in their own home. They can however be charged for domestic services such as help with shopping or housework but any charge would be subject to a financial assessment.

- people aged 65 or over who live in care homes and are assessed as self-funders now receive a weekly payment of £145 towards their personal care, and a further £65 if nursing care is also required. The remainder of the care homes fees – the ‘hotel’ costs - they still fund themselves. People aged under 65 can also receive £65 towards nursing care.

This release presents information from a variety of sources to give a picture of :

- the number of people benefiting from free personal care and free nursing care in Scotland, and
- how much Local Authorities spend on personal care services



2. Main points

Care Homes

- The number of self-funders in Care Homes receiving free personal care has increased from 7,590 in 2002-03 to 9,080 in 2005-06, an increase of 20%.
- The number of self-funders receiving free nursing care has also increased from 4,840 in 2002-03 to 5,890 in 2005-06, an increase of 22%.
- The number of long-stay residents aged 65+ in care homes has fallen slightly since free personal care was introduced. At the same time the number of self-funding residents claiming free personal care has increased. In 2002-03, 24% of long-stay residents were self-funders. This has increased to 29% in 2005-06.

Home Care

- The number of people in receipt of free personal care at home has increased from 27,340 in 2002-03 to 41,240 in 2005-06.
- These numbers rose sharply in the first year, partly due to underreporting by some local authorities while monitoring systems were put in place. They have risen by a quarter between 2003-04 and 2005-06.
- The proportion of older home care clients requiring personal care services has also increased. In 2002-03, 49% of clients received personal care services. This has increased each year to reach 72% in 2005-06.

Expenditure

- Expenditure on free personal care for care home residents was £63 million in 2003-04 (first full year of policy) rising to £69 million in 2005-06.
- Expenditure on free nursing care for care home residents was £17.5 million in 2003-04 rising to £21.5 million in 2005-06.
- All of the expenditure on care home residents is new expenditure arising as a result of the free personal care policy.
- Total expenditure on free personal and nursing care in care homes was £81 million in 2003-04 rising to £91 million in 2005-06.
- Expenditure on free personal care for home care clients was £121 million in 2003-04 (first full year of the policy) rising to £168 million in 2005-06.
- Expenditure on home care clients is not all new expenditure attributable to the free personal care policy. It is estimated that local authorities were spending at least £65 million on personal care services in 2001-02.

3. People receiving Free Personal Care and Free Nursing Care

3.1 Care Homes

Since 2002, the Scottish Executive has collected information on the number of residents aged 65+ supported by local authorities in care homes. These residents may be mainly funded by their local authority or may be a self-funder receiving £145 or £210 per week towards their care homes fees. All of these residents receive personal care services for free.

Table 1 shows that the average number of long-stay residents aged 65+ in care homes in Scotland reduced slightly over the five years since the introduction of free personal and nursing care. Over this period there have been around 32,000 older people resident in care homes.

In contrast, the number of self-funding residents who receive £145 per week for free personal care has increased by 20% from an average of 7,590 in 2002-03 to 9,080 in 2005-06. In 2002-03, 24% of long-stay residents were self-funders. This increased to 29% in 2005-06.

Around two-thirds of self-funding residents receive the free nursing care payment (£65) in addition to the free personal care payment (£145). The number of self-funders receiving free nursing care has increased by 22% from an average of 4,840 in 2002-03 to 5,890 in 2005-06.

Adults aged under 65 may receive the £65 nursing care payment if they are self-funders in a care home. In 2002-03, an average 45 people aged under 65 received the nursing care payment. This rose to 60 in 2005-06. These numbers are small reflecting the fact that the majority of adults aged under 65 in care homes are funded by the local authority.

Further information on care homes is available from the Scottish Care Homes Census – which can be found at :

www.scotland.gov.uk/statistics/commcare/publications

Table 1 : Care Home residents, 2002-03 to 2005-06

	2002/03	2003/04	2004/05	2005/06
Number of long-stay residents aged 65+ supported in care homes	32,250	31,890	31,890	31,810
Numbers of self-funders aged 65+ receiving FPC in Care Homes	7,590	8,230	8,830	9,080
Number of self-funders receiving FNC payment	4,840	5,260	5,730	5,890
Self funders aged 65+ receiving FPC as proportion of all long-stay residents	24%	26%	28%	29%

Source: Community Care Quarterly Key Monitoring

All figures are yearly averages rounded to the nearest 10.

3.2 Home Care

The Scottish Executive publishes home care statistics annually. The latest figures, for 2006, are available from:

www.scotland.gov.uk/statistics/commcare/publications.

Since the introduction of free personal care, the number of older people receiving home care services in Scotland has increased each year from 55,750 in 2002-03 to 57,880 in 2004-05. In 2005-06, the numbers fell slightly to 57,190.

The number of home care clients receiving personal care services has increased each year since the introduction of free personal care, from 27,340 clients in 2002-03 to 41,240 in 2005-06. It should be noted that the 2002-03 figure is thought to be an undercount. Many local authorities could not provide figures straight away as systems were being put in place and early figures were estimated

Over the last 6 years there has been a shift away from care homes towards more care being provided in peoples own homes. At the same time there has been an increase in the proportion of clients receiving personal care services. In 2002-03, when free personal care was introduced, 49% of clients received personal care services. This has steadily increased each year to reach 72% in 2005-06.

3.3 Direct Payments for Free Personal Care

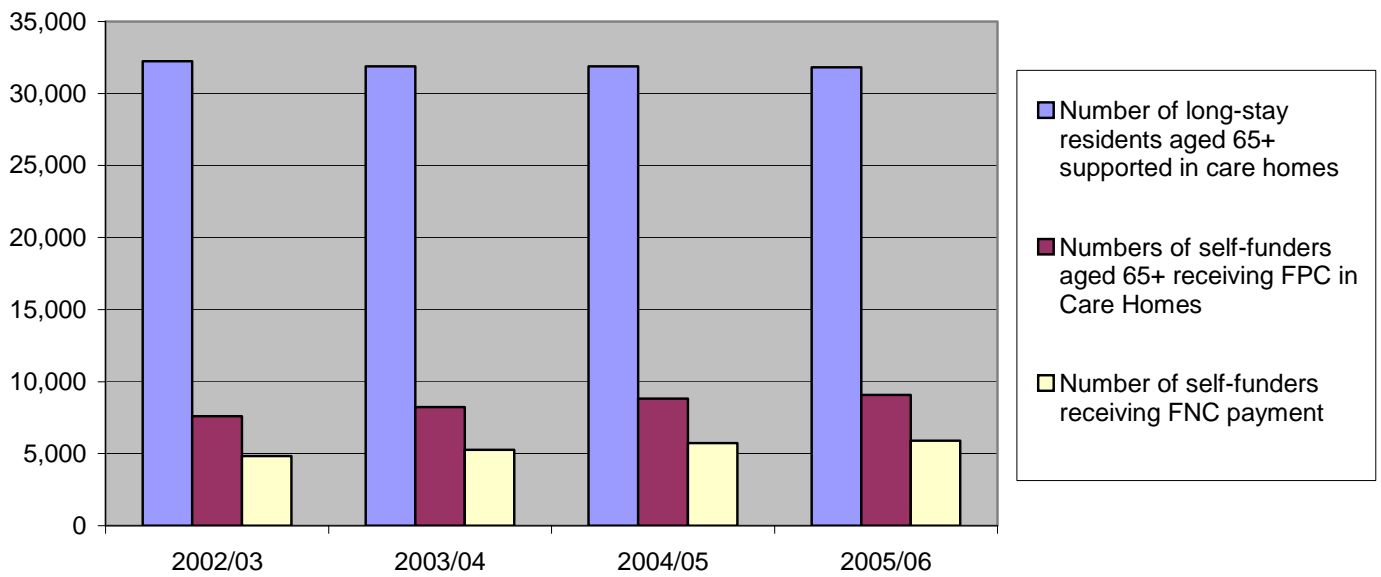
Direct Payments are for **self-directed community care** whereby eligible people purchase and manage for themselves some or all of the care they have been assessed as needing. They are one way of increasing the flexibility, choice, and control people have over the care they receive, so that they can live more independently in their communities. At March 2006, there were an estimated 200 people in Scotland using direct payments to purchase the personal and nursing care services they need.

Table 2: Home Care clients, 2002-03 to 2005-06

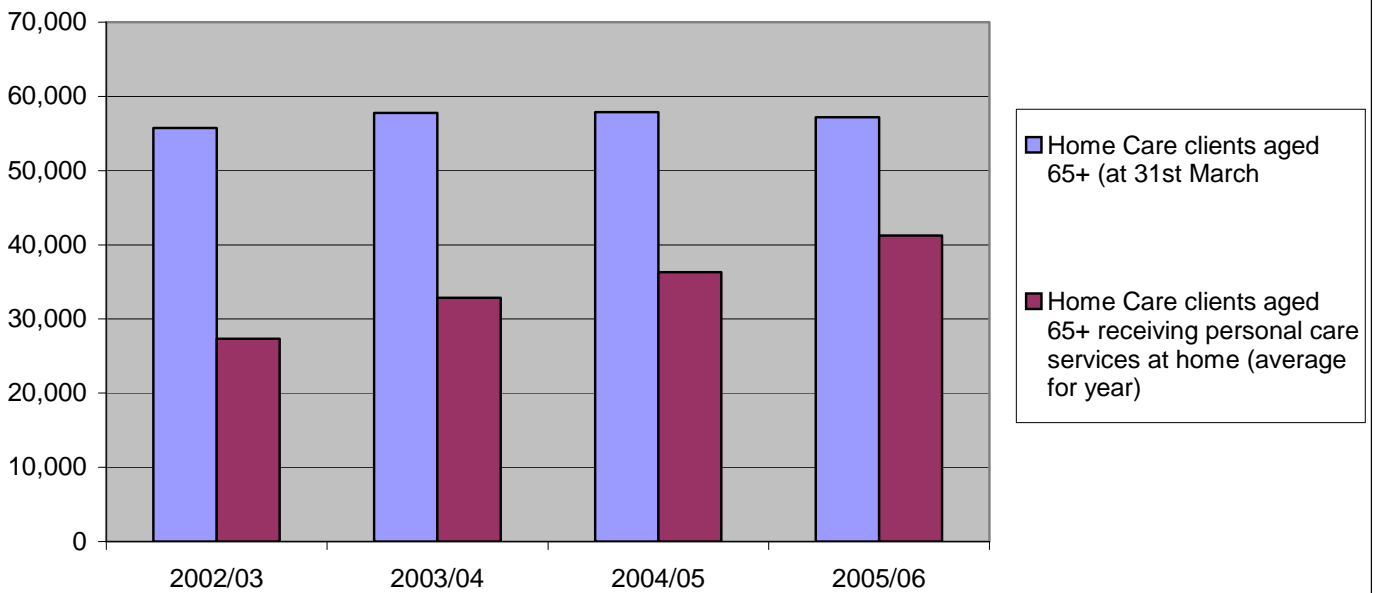
	2002/03	2003/04	2004/05	2005/06
Home Care clients aged 65+ (at 31st March)	55,750	57,760	57,880	57,190
Home Care clients aged 65+ receiving personal care services at home (average for year)	27,340	32,870	36,300	41,240
Hours of FPC at home (average for year)	187,200	226,000	242,900	262,200
Proportion of all home care clients receiving personal care	49%	57%	63%	72%
Average number of hours of personal care each week	6.8	6.9	6.7	6.4

Source: Community Care Quarterly Key Monitoring
All figures are yearly averages rounded to the nearest 10.

Care Home residents 2002-03 to 2005-06



Home Care Clients 2002-03 to 2005-06



4. Expenditure

4.1 Care Homes

From 1 July 2002, personal and nursing care services became free for people aged 65 and over resident in care homes. In practice this means that everyone aged 65 and over who has been assessed as requiring personal and/or nursing care services in a care home receives £145 per week for personal care and £65 per week for nursing care.

The expenditure data on free personal and nursing care relates only to self-funders who previously would have paid for all of their care. The figures therefore allow us to determine the additional cost to Local Authorities in Scotland, following the implementation of this policy, in relation to care homes.

Table 3 shows total expenditure on free personal and nursing care payments for the first four years of the policy. Note that the first year has been

factored up to represent a whole year. This allows us to look at trends over the four years.

- Expenditure on free personal care for self-funders in care homes has risen each year from £63 million in 2003-04 (first full year of the policy) to £69 million in 2005/06.
- Expenditure on free nursing care for self-funders in care homes has also risen each year from £17.5 million in 2003/04 (first full year of the policy) to £21.5 million in 2005/06.

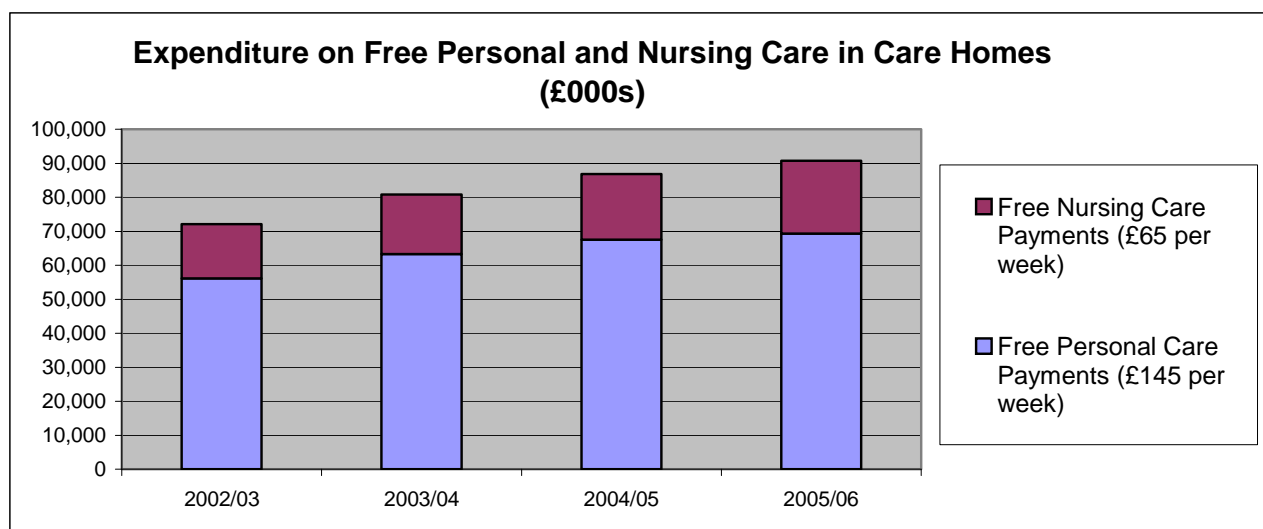
Over this same period the number of older people supported by local authorities in Care Homes remained fairly static at around 32,000. This would suggest that there has been a shift towards more self-funding residents and therefore a reduction in local authority funded residents.

Table 3: Expenditure on Care Homes for Older People, 2002-03 to 2005-06

	2002/03*	2003/04	2004/05	2005/06
Net Expenditure on Care Homes for Older People	371,700	406,700	457,100	478,800
Free Personal Care Payments (£145 per week)	56,100	63,300	67,500	69,300
Free Nursing Care Payments (£65 per week)	16,000	17,500	19,300	21,500
Expenditure on FPNC in Care Homes	72,100	80,800	86,800	90,800
Expenditure on FPNC as percentage of Net expenditure on Care Homes for Older People	19%	20%	19%	19%

Source: Free Personal and Nursing Care Expenditure Survey, Local Financial Return (LFR3)

*The free personal care policy began 1 July 2002. The 2002-03 figures have been factored up to represent a full year.



4.2 Home care

From 1 July 2002, all personal care services provided to people in their own homes became free of charge. Prior to this date, local authorities had discretion to charge for these services and a variety of charging policies operated across the country. Any charges were subject to a financial assessment which means that in practise many people would have received these services for free prior to the introduction of free personal care. With the introduction of free personal care these services became free for **all clients**. Local authorities can still charge for domestic services such as help with shopping or housework.

Since 2002, information has been collected on the cost of providing personal care services at home. It should be noted that these costs do not tell us the additional cost of this policy as many people would have received these services for free prior to 2002. Therefore a proportion of these costs are ongoing costs and a proportion are new costs due to the introduction of FPC.

Total expenditure on personal care services at home increased from £121 million in 2003-04 (first full year of policy) to £168 million in 2005-06.

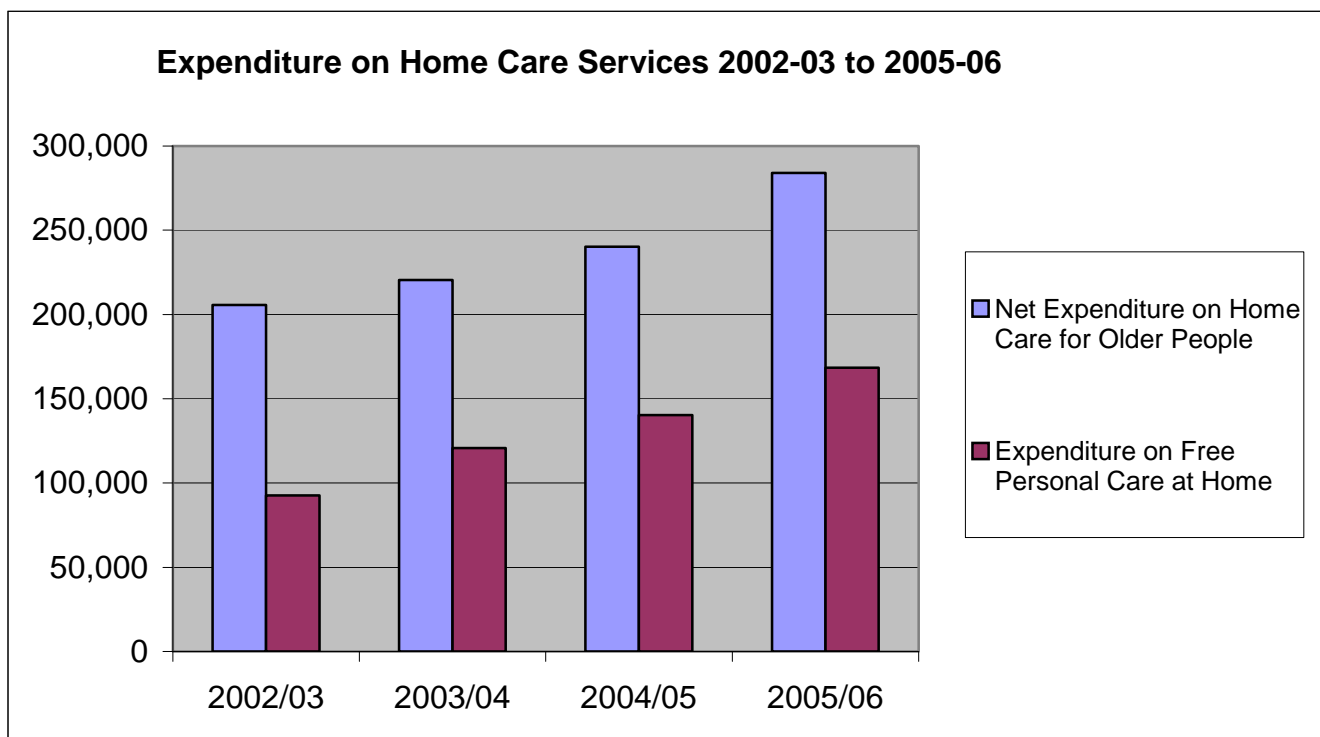
Expenditure on personal care services accounted for 55% of overall net expenditure on home care services in 2003-4 and 59% in 2005-06.

Table 4: Expenditure on Home based services for Older People, 2002-03 to 2005-06

	2002/03*	2003/04	2004/05	2005/06
Net Expenditure on Home Care for Older People	205,600	220,500	240,200	284,000
Expenditure on Free Personal Care at Home	92,567	120,748	140,230	168,350
Expenditure on FPC at home as percentage of all net expenditure on home care services.	45%	55%	58%	59%

Source: Free Personal and Nursing Care Expenditure Survey, Local Financial Return (LFR3)

*The free personal care policy began 1 July 2002. The 2002-03 figures have been factored up to represent a full year.



5. Background information on the collection of the data

These statistics have not been published as National Statistics as some of the data are still under development and there remain quality issues with collecting data on personal care services at home. In particular, *weekly hours of personal care at home* is highlighted as data under development.

A variety of different data sources were used to compile this Statistics Release, as detailed below:

Community Care Monthly key monitoring return

Between 2002 and 2005 the Scottish Executive collected monthly information from Local Authorities regarding the number of residents supported in Care Homes. This data is summarised in Annex 1: Table 1. From 2006, this information was collected quarterly in the community care quarterly key monitoring return.

Community Care Quarterly key monitoring return

Since July 2002, the Scottish Executive has collected quarterly information on the number of people receiving personal care services at home and the number of self-funders receiving free personal care and free nursing care payments. The numbers represent only those people receiving FPC and FNC under the Community Care and Health (Scotland) Act 2002.

For Care Homes, this provides a count of those people who, prior to free personal care, were self-funders. Anyone who is funded under the National Assistance regulations even if they are topped up to £145 for free personal care are excluded from the figures.

For care at home the figures show all people receiving personal care services at home. A proportion of these would have received their personal care for free prior to the introduction of the Community Care and Health (Scotland) Act 2002.

Local Authorities have improved their recording and reporting of this data over time as systems have been set up to monitor and record this information.

The results of the quarterly survey are available at: <http://www.scotland.gov.uk/Topics/Statistics/Browse/Health/Data/QuarterlySurvey>

Free Personal and nursing care expenditure survey

The Scottish Executive carried out a separate survey asking about expenditure on free personal and nursing care for 2002-03 and 2003-04. From 2004-05 onwards this data is collected through the Local Financial Return (LFR3).

For Care Homes, the numbers represent spend on those people receiving FPC and FNC under the Community Care and Health (Scotland) Act 2002. i.e. those prior to free personal care who were self-funders. Expenditure figures also include the amount spent on anyone who was topped up to the £145/£210 per week.

For care at home, the numbers represent all spend on personal care services provided to people in their own homes.

Local Financial Return (LFR3)

The Local Financial Return collects expenditure statistics for each local authority in Scotland. The LFR3 collects all expenditure and income relating to social work services. From 2004-05, questions relating to expenditure on free personal care were added to the LFR3 return. Further information available from:

<http://www.scotland.gov.uk/Topics/Statistics/Browse/Local-Government-Finance>

Points to note

The quality of the data on Free Personal Care continues to improve. However there remain issues with this data which still preclude it from being labelled as a National Statistics publication.

All figures published on Free Personal and nursing care are provisional and subject to possible change

in future publications. Some particular issues that we are aware of:

Many local authorities could not provide accurate data for some time after July 2002 as they were getting monitoring systems set up and put in place. The accuracy of the quarterly monitoring returns has improved over time and care should be taken in drawing any conclusions from the very early data as some estimation was involved in producing these figures,

Copies of all Community Care Surveys are available from the website at:

<http://www.scotland.gov.uk/Topics/Statistics/Browse/Health/DataSupplier>

Care Homes

In general, care should be taken when comparing the data on 'numbers' of people receiving free personal care and 'expenditure' on free personal care. The number of people receiving FPC and FNC payments is collected at the end of the quarter and represents the number of people receiving payments on the last day of the quarter. These four quarters are averaged to produce the yearly total.

Due to the large number of admissions and discharges throughout the year, these averages do not necessarily represent the number of people receiving FPC for the full 52 weeks of the year. In the six months to March 2006, there were 6,500 long-stay admissions to care homes for older people in Scotland. This represents 250 long-stay and 340 short-stay admissions every week. It should be noted that these figures only provide a snapshot of people receiving payments at the end of the quarter rather than a precise count of throughput.

Edinburgh have revised their FPNC expenditure for all years to bring in line with the latest LFR3 guidance and the CIPFA Best Value Accounting Code of Practice (BVACOP). This means that all Edinburgh FPNC expenditure figures include a share of overheads.

Care at Home

As with the care homes data, the quarterly data for FPC at home provides a snapshot at the end of each quarter which have been averaged to provide an

annual figure. This will not compare directly with the expenditure data which takes into account fluctuations within each quarter.

The hourly data on free personal care at home (table 7) should be regarded as data under development and is not comparable with expenditure data or other data sources.

Edinburgh have revised their FPC at home figures for all years from 2003-04 onwards. They are now on the BVACOP "Total cost" basis as required by the LFR3.

West Lothian have revised their FPC at home figures for all years.

Further information

Further details and analysis of the data presented in this Statistics Release are available on request from the address given below. The Statistics Release is available on the Internet by accessing the Scottish Executive web site: –

<http://www.scotland.gov.uk/Topics/Statistics/Browse/Health/Publications>

Information at local authority level is shown in the annex to this Statistics Release.

Community Care Statistics
Basement Rear
St Andrews House
Edinburgh
EH1 3DG

Contact: Steven Gillespie
Tel: 0131 244 3777
E-mail: SWStat@scotland.gov.uk

This statistics release was published on 26th June 2007.



7. ANNEX

The Annex provides detailed information for each Local authority area in Scotland for the years 2002-03 to 2005-06:

Care Homes

Table 1: Number of long-stay residents aged 65+ supported in care homes

Table 2: Self-funders aged 65+ receiving FPC payment in care homes

Table 3: Self-funders receiving FNC payment in care homes.

Care at Home

Table 4: Number of people aged 65+ receiving home care.

Table 5: Number of people aged 65+ receiving FPC at home.

Table 6: Hours of free personal care received by older people at home

Expenditure on Care Homes

Table 7: Net expenditure on care homes for older people.

Table 8: Expenditure on FPNC in care homes.

Expenditure on care at home

Table 9: Net expenditure on home care services.

Table 10: Expenditure on FPC at home.

Table 1: Number of long-stay residents aged 65+ supported in care homes
(Yearly averages)

LA	2002/03	2003/04	2004/05	2005/06
Aberdeen City	1,670	1,670	1,640	1,630
Aberdeenshire	1,510	1,460	1,450	1,450
Angus	730	740	760	710
Argyll & Bute	660	630	620	720
Clackmannanshire	250	250	250	260
Dumfries & Galloway	820	860	820	780
Dundee City	830	850	910	850
East Ayrshire	720	730	700	710
East Dunbartonshire	500	520	530	530
East Lothian	550	570	580	570
East Renfrewshire	500	450	420	400
Edinburgh, City of	2,950	3,030	3,060	3,040
Eilean Siar	200	190	190	190
Falkirk	650	660	700	720
Fife	1,960	2,000	2,030	2,060
Glasgow city	5,030	4,760	4,570	4,530
Highland	1,500	1,420	1,400	1,440
Inverclyde	640	620	610	580
Midlothian	520	520	490	470
Moray	460	430	540	590
North Ayrshire	870	860	850	850
North Lanarkshire	1,620	1,550	1,480	1,410
Orkney Islands	90	90	80	100
Perth & Kinross	1,170	1,190	1,170	1,140
Renfrewshire	960	980	1,040	1,040
Scottish Borders	750	750	750	750
Shetland Islands	110	110	110	110
South Ayrshire	760	760	780	820
South Lanarkshire	1,600	1,630	1,700	1,670
Stirling	550	560	540	550
West Dunbartonshire	520	500	550	570
West Lothian	590	590	580	580
SCOTLAND estimate	32,250	31,890	31,890	31,810

Source: Community Care Quarterly Key Monitoring

All figures are yearly averages rounded to the nearest 10.

Table 2: Numbers of self-funders receiving FPC in Care Homes
(Yearly averages)

LA	2002/03	2003/04	2004/05	2005/06
Aberdeen City	380	390	430	430
Aberdeenshire	480	500	480	470
Angus	270	270	280	280
Argyll & Bute	200	210	210	240
Clackmannanshire	30	40	30	40
Dumfries & Galloway	250	310	390	280
Dundee City	140	170	200	210
East Ayrshire	150	150	140	140
East Dunbartonshire	200	220	250	270
East Lothian	150	160	170	170
East Renfrewshire	180	180	210	210
Edinburgh, City of	1,100	1,260	1,280	1,360
Eilean Siar	10	10	20	20
Falkirk	160	150	140	140
Fife	460	620	700	730
Glasgow city	560	560	610	630
Highland	220	280	400	400
Inverclyde	150	150	150	150
Midlothian	80	80	80	80
Moray	130	150	160	190
North Ayrshire	210	230	230	240
North Lanarkshire	110	140	170	200
Orkney Islands	10	10	10	10
Perth & Kinross	460	470	490	470
Renfrewshire	190	200	200	220
Scottish Borders	200	200	210	220
Shetland Islands	0	0	0	0
South Ayrshire	280	290	330	360
South Lanarkshire	460	430	450	480
Stirling	210	220	230	240
West Dunbartonshire	70	70	70	80
West Lothian	100	100	110	120
SCOTLAND estimate	7,590	8,230	8,830	9,080

Source: Community Care Quarterly Key Monitoring

All figures are yearly averages rounded to the nearest 10.

Table 3: Number of self-funders receiving FNC payment
(Yearly averages)

LA	2002/03	2003/04	2004/05	2005/06
Aberdeen City	230	260	290	290
Aberdeenshire	330	360	340	350
Angus	80	90	110	120
Argyll & Bute	80	80	80	100
Clackmannanshire	20	30	30	40
Dumfries & Galloway	100	220	310	220
Dundee City	80	100	110	110
East Ayrshire	100	100	100	90
East Dunbartonshire	150	160	190	200
East Lothian	100	130	130	130
East Renfrewshire	120	110	130	160
Edinburgh, City of	840	920	970	1,030
Eilean Siar	0	0	10	10
Falkirk	120	130	120	120
Fife	270	340	400	410
Glasgow city	360	360	380	380
Highland	200	190	170	160
Inverclyde	110	110	110	110
Midlothian	50	60	60	60
Moray	70	90	110	140
North Ayrshire	130	150	140	150
North Lanarkshire	80	100	120	140
Orkney Islands	0	0	0	0
Perth & Kinross	210	220	230	240
Renfrewshire	140	130	150	160
Scottish Borders	90	90	90	90
Shetland Islands	0	0	0	0
South Ayrshire	220	240	280	290
South Lanarkshire	290	240	290	310
Stirling	120	130	140	150
West Dunbartonshire	40	40	40	40
West Lothian	90	90	90	90
SCOTLAND estimate	4,840	5,260	5,730	5,890

Source: Community Care Quarterly Key Monitoring

All figures are yearly averages rounded to the nearest 10.

Table 4: Number of People aged 65+ Receiving Home Care, by Local Authority, 2000-2006
(At 31st March)

Local Authority	At 31st March						
	2000	2001	2002	2003	2004	2005	2006
Aberdeen City	3,380	2,590	2,380	2,130	2,560	2,440	2,490
Aberdeenshire	1,610	1,610	1,440	1,540	1,580	1,740	1,830
Angus	1,560	1,570	1,500	1,530	1,550	1,540	1,700
Argyll & Bute	830	790	830	840	930	930	830
Clackmannanshire	500	470	470	530	530	590	570
Dumfries & Galloway	1,460	1,760	1,400	1,630	1,620	1,530	1,740
Dundee City	2,590	2,180	1,900	1,670	1,590	1,850	1,590
East Ayrshire	1,190	1,120	1,130	1,200	1,390	1,410	1,410
East Dunbartonshire	840	830	880	900	1,040	1,000	1,010
East Lothian	1,130	1,030	1,110	1,020	1,240	1,190	1,110
East Renfrewshire	720	620	800	780	860	950	830
Edinburgh, City of	5,240	4,820	4,740	4,900	4,680	4,560	4,350
Eilean Siar	740	710	700	680	680	660	570
Falkirk	1,970	1,980	1,800	1,820	1,750	1,830	1,870
Fife	5,490	5,270	4,800	5,130	5,740	5,810	5,680
Glasgow City	8,330	7,650	7,400	7,460	7,660	7,680	7,460
Highland	2,540	2,330	2,290	2,620	2,550	2,320	2,250
Inverclyde	1,090	970	1,030	920	890	1,030	980
Midlothian	820	1,010	980	920	1,000	910	970
Moray	900	910	890	950	1,110	1,200	1,090
North Ayrshire	1,380	1,270	1,110	1,270	1,440	1,300	1,170
North Lanarkshire	2,460	2,240	2,560	3,270	3,370	3,350	3,390
Orkney Islands	340	340	390	320	360	370	410
Perth & Kinross	1,280	1,240	1,300	1,400	1,370	1,070	1,100
Renfrewshire	1,980	2,040	1,660	1,660	1,470	1,550	1,500
Scottish Borders	1,310	1,250	1,300	1,390	1,420	1,330	1,280
Shetland Islands	570	570	470	470	460	470	470
South Ayrshire	1,180	980	1,020	1,190	1,350	1,310	1,350
South Lanarkshire	2,180	2,000	1,900	2,140	2,220	2,610	2,660
Stirling	760	710	820	670	700	670	710
West Dunbartonshire	1,390	1,240	1,300	1,470	1,640	1,650	1,660
West Lothian	1,510	1,300	1,180	1,320	1,010	1,040	1,160
Scotland	59,230	55,380	53,480	55,750	57,760	57,880	57,190

Source: H1 Home Care return

All figures rounded to nearest 10.

Table 5: Number of people receiving FPC at home
(Yearly averages)

LA	2002/03	2003/04	2004/05	2005/06
Aberdeen City	1,470	1,470	1,510	1,590
Aberdeenshire	1,050	1,210	1,320	1,570
Angus	720	770	800	800
Argyll & Bute	390	480	430	340
Clackmannanshire	250	360	370	440
Dumfries & Galloway	1,380	1,380	1,380	1,380
Dundee City	650	780	800	1,250
East Ayrshire	510	870	1,030	1,100
East Dunbartonshire	400	600	710	780
East Lothian	710	710	740	860
East Renfrewshire	480	540	610	710
Edinburgh, City of	1,450	1,970	2,310	2,450
Eilean Siar	320	420	410	450
Falkirk	980	1,040	1,190	1,190
Fife	2,790	3,200	3,290	3,290
Glasgow city	3,140	4,020	5,260	6,340
Highland	1,110	1,400	1,600	1,840
Inverclyde	820	840	920	930
Midlothian	220	290	320	520
Moray	610	680	590	660
North Ayrshire	660	830	960	980
North Lanarkshire	1,330	1,670	2,010	2,900
Orkney Islands	150	180	190	190
Perth & Kinross	320	700	950	1,030
Renfrewshire	630	770	820	960
Scottish Borders	710	880	1,040	1,110
Shetland Islands	170	190	190	170
South Ayrshire	1,100	1,130	1,190	1,230
South Lanarkshire	890	1,100	1,310	1,790
Stirling	360	420	430	460
West Dunbartonshire	430	680	590	980
West Lothian	1,140	1,310	1,070	960
SCOTLAND estimate	27,340	32,870	36,300	41,240

Source: Community Care Quarterly Key Monitoring

All figures are yearly averages rounded to the nearest 10.

Table 6: Weekly Hours of FPC at home
(Yearly averages)

LA	2002/03	2003/04	2004/05	2005/06
Aberdeen City	12,300	12,300	12,300	12,000
Aberdeenshire	5,800	6,200	6,700	7,900
Angus	3,000	3,200	3,000	3,000
Argyll & Bute	2,800	4,400	3,700	3,200
Clackmannanshire	1,100	2,000	1,900	3,200
Dumfries & Galloway	9,000	9,000	9,000	9,000
Dundee City	3,300	4,400	4,700	7,100
East Ayrshire	3,200	6,200	6,500	6,600
East Dunbartonshire	2,300	3,800	4,600	5,000
East Lothian	5,700	5,700	6,400	6,400
East Renfrewshire	3,000	3,500	4,100	5,000
Edinburgh, City of	8,700	12,300	15,100	16,300
Eilean Siar	1,700	2,400	3,200	3,700
Falkirk	5,000	5,500	6,100	6,300
Fife	16,400	17,400	17,400	17,300
Glasgow city	30,600	39,500	41,100	40,500
Highland	6,600	7,500	8,400	9,500
Inverclyde	4,200	4,100	5,000	6,800
Midlothian	2,100	2,500	2,900	4,100
Moray	4,200	4,700	4,000	4,400
North Ayrshire	3,600	4,300	5,000	5,200
North Lanarkshire	9,500	11,900	14,200	16,400
Orkney Islands	900	1,000	1,200	1,200
Perth & Kinross	4,000	4,700	5,400	6,700
Renfrewshire	3,100	4,400	4,600	4,700
Scottish Borders	3,700	4,600	5,400	5,800
Shetland Islands	1,500	1,600	1,800	1,700
South Ayrshire	8,100	9,800	10,500	11,600
South Lanarkshire	12,100	14,900	17,700	15,200
Stirling	1,300	1,600	1,600	1,800
West Dunbartonshire	1,500	2,400	3,100	8,900
West Lothian	6,900	8,100	6,400	5,500
SCOTLAND estimate	187,200	226,000	242,900	262,200

Source: Community Care Quarterly Key Monitoring

All figures are average weekly hours (based on last week of each quarter) rounded to the nearest 100.

Table 7: Net Expenditure on Care Homes for Older People

£millions

	Net Expenditure						
	1999/2000	2000/2001	2001/2002	2002/2003	2003/2004	2004/2005	2005/06
Aberdeen City	11.9	11.7	12.6	19.0	22.8	22.9	26.5
Aberdeenshire	9.2	9.6	10.3	6.4	6.8	22.3	23.3
Angus	6.8	5.7	6.6	11.1	11.1	13.6	13.3
Argyll & Bute	4.1	4.7	5.3	9.5	8.8	9.8	11.7
Clackmannanshire	2.2	1.4	2.0	2.8	3.1	3.4	3.7
Dumfries & Galloway	7.4	6.5	6.4	9.2	9.8	9.9	7.8
Dundee City	7.7	7.8	7.9	11.9	13.5	16.2	15.6
East Ayrshire	4.6	4.8	5.4	9.8	11.3	11.4	11.9
East Dunbartonshire	0.4	0.3	0.0	0.0	6.5	3.9	5.5
East Lothian	4.5	3.9	4.1	7.3	7.1	8.5	9.9
East Renfrewshire	3.0	3.2	3.2	9.2	4.1	5.0	6.2
Edinburgh, City of	12.2	13.0	14.0	35.5	43.9	46.6	46.9
Eilean Siar	3.4	3.5	3.7	4.6	4.5	4.6	5.3
Falkirk	7.1	7.3	7.9	5.2	8.5	9.0	8.6
Fife	14.0	14.3	15.1	17.4	21.7	31.1	29.5
Glasgow	44.5	39.2	41.6	55.3	60.8	61.8	58.9
Highland	11.9	14.4	14.5	22.8	25.0	26.8	27.8
Inverclyde	4.0	3.9	4.4	7.2	7.5	5.8	6.0
Midlothian	3.2	3.4	3.3	5.8	7.2	7.6	7.4
Moray	4.2	4.9	4.2	6.2	7.2	6.7	7.2
North Ayrshire	5.6	5.9	7.0	10.4	11.5	13.0	13.0
North Lanarkshire	16.3	17.5	17.7	28.7	24.7	28.9	27.5
Orkney Islands	1.7	1.8	2.0	2.2	2.3	2.2	3.4
Perth & Kinross	5.4	4.5	6.3	12.2	15.6	16.0	14.8
Renfrewshire	6.6	7.9	8.3	11.9	14.5	15.6	14.9
Scottish Borders	4.8	4.6	4.9	5.7	10.4	10.2	11.2
Shetland Islands	1.0	1.1	1.3	1.6	1.8	2.3	3.4
South Ayrshire	5.3	5.2	5.2	6.3	7.1	7.3	6.5
South Lanarkshire	9.7	10.5	12.1	22.5	6.3	10.7	26.9
Stirling	3.1	3.1	2.1	5.5	6.1	6.0	7.2
West Dunbartonshire	6.2	6.0	7.0	7.6	7.7	8.4	7.5
West Lothian	5.1	4.8	5.1	0.9	7.2	9.5	9.7
Scotland	237.0	236.5	251.4	371.7	406.7	457.1	478.8

Source: LFR3

These figures differ from those published by Local Government Finance – Glasgow has provided revised figures for 2002-03 to 2005-06.

Table 8: Expenditure on Free Personal and Nursing Care in Care Homes
000s

	2002-03*			2003-04			2004-05			2005-06		
	FPC	FNC	Total	FPC	FNC	Total	FPC	FNC	Total	FPC	FNC	Total
Aberdeen City	2,852	877	3,729	3,182	1,008	4,190	3,245	972	4,217	3,492	1,103	4,595
Aberdeenshire	3,561	1,131	4,692	3,480	1,112	4,592	3,491	1,121	4,612	3,699	1,166	4,865
Angus	2,036	355	2,391	2,150	401	2,550	2,104	375	2,479	1,191	1,085	2,276
Argyll & Bute	1,720	259	1,979	1,513	253	1,766	1,637	287	1,924	1,598	280	1,878
Clackmannanshire	211	92	303	264	98	362	260	95	355	326	121	447
Dumfries & Galloway	1,539	323	1,861	2,117	267	2,384	1,953	516	2,469	2,205	257	2,462
Dundee City	1,260	337	1,597	1,498	394	1,892	1,600	417	2,017	1,842	448	2,290
East Ayrshire	1,004	324	1,328	946	336	1,282	1,048	332	1,380	984	447	1,431
East Dunbartonshire	1,533	500	2,033	1,639	555	2,194	1,839	638	2,476	2,003	692	2,695
East Lothian	1,120	372	1,492	976	340	1,316	1,111	372	1,483	1,271	462	1,733
East Renfrewshire	1,408	403	1,811	1,674	532	2,206	1,927	621	2,548	1,281	1,057	2,338
Edinburgh, City of	7,875	2,348	10,223	9,439	2,846	12,285	11,213	3,461	14,674	12,218	3,843	16,061
Eilean Siar	103	13	116	151	27	178	128	30	158	158	30	188
Falkirk	1,209	432	1,641	1,163	448	1,611	1,078	412	1,490	1,068	420	1,488
Fife	3,512	933	4,445	4,655	1,191	5,846	5,068	1,391	6,459	4,897	1,232	6,129
Glasgow City	3,827	1,145	4,972	4,153	1,192	5,345	4,617	1,282	5,899	4,107	1,265	5,372
Highland	1,649	668	2,317	3,316	633	3,949	3,246	571	3,817	3,379	591	3,970
Inverclyde	1,113	376	1,489	1,256	429	1,685	1,194	416	1,610	1,188	442	1,630
Midlothian	571	160	731	574	177	751	611	203	814	643	184	827
Moray	1,068	272	1,340	1,208	327	1,535	1,293	417	1,710	1,571	539	2,110
North Ayrshire	1,613	500	2,113	1,804	531	2,335	1,717	487	2,204	1,771	492	2,263
North Lanarkshire	840	291	1,131	870	310	1,180	1,417	443	1,860	1,421	455	1,876
Orkney Islands	99	0	99	102	0	102	102	0	102	72	0	72
Perth & Kinross	3,561	748	4,309	3,517	749	4,266	3,489	758	4,247	3,596	792	4,388
Renfrewshire	1,376	483	1,859	1,353	422	1,775	1,510	492	2,002	1,606	553	2,159
Scottish Borders	1,579	329	1,908	1,630	348	1,977	1,510	303	1,813	1,736	298	2,034
Shetland Islands	1	0	1	0	0	0	0	0	0	0	0	0
South Ayrshire	2,246	716	2,962	2,175	760	2,935	2,419	905	3,324	2,658	967	3,625
South Lanarkshire	3,195	800	3,995	3,348	890	4,238	3,473	1,012	4,485	4,062	1,194	5,256
Stirling	1,416	395	1,811	1,763	504	2,267	1,778	501	2,278	1,729	568	2,297
West Dunbartonshire	369	89	459	709	166	875	755	184	939	707	167	874
West Lothian	681	289	971	682	289	971	708	296	1,004	868	349	1,217
Scotland	56,148	15,960	72,108	63,307	17,533	80,840	67,542	19,308	86,850	69,349	21,497	90,846

Source: FPNC survey and LFR3

*The free personal care policy began 1 July 2002. The 2002-03 figures have been factored up to represent a full year.

1. Edinburgh have revised their expenditure for all years from 2003-04 onwards.



Table 9: Net Expenditure on Home Care for Older People

£millions

	Net Expenditure						
	1999/2000	2000/2001	2001/2002	2002/2003	2003/2004	2004/2005	2005/06
Aberdeen City	7.5	6.4	6.7	8.3	9.9	11.1	12.4
Aberdeenshire	3.0	2.9	3.4	5.9	7.3	8.8	9.6
Angus	1.9	0.0	0.0	5.8	7.1	7.2	7.7
Argyll & Bute	1.7	1.9	2.0	4.8	3.4	1.5	5.2
Clackmannanshire	0.2	0.6	0.4	1.1	1.3	1.7	1.7
Dumfries & Galloway	5.3	5.3	5.5	7.1	8.2	9.4	10.6
Dundee City	3.8	4.1	4.6	7.3	8.6	9.1	9.4
East Ayrshire	2.4	2.5	3.0	4.2	4.1	6.3	6.1
East Dunbartonshire	1.3	1.6	1.7	8.6	4.3	5.9	5.0
East Lothian	2.5	2.3	2.5	2.6	4.0	4.7	4.5
East Renfrewshire	0.8	1.2	1.2	0.4	0.7	1.3	1.8
Edinburgh, City of	8.7	9.1	10.0	14.2	16.2	21.0	29.4
Eilean Siar	2.0	1.6	1.9	2.6	3.2	3.1	5.4
Falkirk	4.8	4.6	5.4	5.5	8.2	8.0	8.8
Fife	9.7	10.6	10.9	16.2	17.3	18.1	17.5
Glasgow	4.7	14.3	26.1	26.4	21.2	15.4	31.4
Highland	1.7	3.6	3.1	6.2	7.0	8.0	14.1
Inverclyde	2.4	2.5	2.5	2.7	2.5	4.1	5.0
Midlothian	1.6	1.7	2.4	2.2	2.8	3.3	3.4
Moray	2.2	1.9	1.7	2.1	3.5	4.7	5.4
North Ayrshire	2.6	2.7	3.2	4.3	3.6	3.9	5.1
North Lanarkshire	6.2	7.1	10.4	23.2	25.8	25.9	24.2
Orkney Islands	0.9	0.9	1.0	0.8	1.2	1.5	1.2
Perth & Kinross	1.6	2.9	2.7	4.9	6.2	6.6	8.0
Renfrewshire	5.7	5.4	4.9	4.6	5.1	5.5	5.3
Scottish Borders	2.3	2.6	3.0	6.9	4.7	5.5	7.0
Shetland Islands	0.9	1.0	1.7	1.8	1.8	2.0	2.3
South Ayrshire	2.4	2.6	3.4	4.3	7.1	7.6	7.7
South Lanarkshire	5.1	5.2	5.8	12.7	16.3	18.3	18.9
Stirling	1.8	2.2	2.4	2.0	3.2	3.1	2.5
West Dunbartonshire	2.0	2.3	1.7	2.1	0.9	1.1	1.0
West Lothian	3.7	4.3	2.6	3.9	4.0	6.6	6.6
Scotland	103.2	118.1	137.8	205.6	220.5	240.2	284.0

Source: LFR3

Table 10: Expenditure on Free Personal Care at Home

	000s			
	2002-03*	2003-04	2004-05	2005-06
Aberdeen City	5,080	5,485	6,857	7,859
Aberdeenshire	3,187	3,249	3,838	4,777
Angus	1,625	1,590	1,555	2,164
Argyll & Bute	3,015	3,053	3,638	4,175
Clackmannanshire	605	960	1,022	1,757
Dumfries & Galloway	4,365	6,400	7,295	8,081
Dundee City	4,237	6,088	5,194	6,178
East Ayrshire	1,775	2,947	3,867	4,482
East Dunbartonshire	1,241	2,194	2,476	3,262
East Lothian	1,728	2,899	4,129	4,582
East Renfrewshire	1,325	1,135	1,229	1,298
Edinburgh, City of	5,541	8,391	10,902	15,776
Eilean Siar	927	2,300	2,288	2,170
Falkirk	2,696	3,717	2,542	3,729
Fife	8,991	10,038	13,568	14,144
Glasgow City	8,709	12,527	16,209	20,297
Highland	3,616	3,720	3,965	4,119
Inverclyde	2,064	2,503	2,867	4,212
Midlothian	1,167	1,025	1,145	3,785
Moray	1,884	2,313	2,741	3,106
North Ayrshire	1,170	1,309	1,451	2,178
North Lanarkshire	7,184	8,939	8,700	10,878
Orkney Islands	404	384	484	668
Perth & Kinross	1,767	2,905	3,347	4,346
Renfrewshire	1,884	2,400	2,320	2,655
Scottish Borders	2,013	2,497	2,980	2,412
Shetland Islands	1,153	1,229	1,352	1,620
South Ayrshire	3,885	5,155	5,774	6,387
South Lanarkshire	3,296	6,510	9,724	11,047
Stirling	1,291	1,329	1,541	1,266
West Dunbartonshire	980	1,455	1,739	2,020
West Lothian	3,761	4,102	3,491	2,920
SCOTLAND	92,567	120,748	140,230	168,350

Source: FPNC survey and LFR3

*The free personal care policy began 1 July 2002. The 2002-03 figures have been factored up to represent a full year.

1. Both Edinburgh and West Lothian have reworked the estimates of expenditure on free personal care at home for 2003-04 and 2004-05.