



Statistics Publication Notice

Education Series

ISSN 1479-7569
ISBN 978-0-7559-6442-0

EXCLUSIONS FROM SCHOOLS, 2005/06 30th January, 2007

A Scottish Executive National Statistics Publication

This document contains analysis of the exclusions data for 2005/06. Information relates to local authority schools only. Exclusions include both temporary exclusions and pupils removed from the register.

Nearly all of this publication refers to cases of exclusion, which must not be confused with the number of pupils excluded, as some pupils were excluded more than once during the year.

The main findings are:

- During 2005/06 there were **42,990 exclusions** from local authority schools in Scotland, an increase of two per cent from 2004/05. The number of exclusions has risen each year since 2002/03. About 22,500 different **pupils** (three per cent of pupils) were excluded during the year.
- Over 99 per cent of all exclusions were temporary. In 264 cases, pupils were **removed from the register** of the school, a decrease of three per cent from the 2004/05 figure of 271¹.
- Overall, **male** pupils accounted for 78 per cent of exclusions. The proportion has decreased from 81 per cent in 1999/2000.
- There were 5,779 exclusions from local authority **primary** schools, 13 per cent of the total, and equivalent to 15 exclusions per 1,000 pupils. The number is a nine per cent increase from 5,319 exclusions in 2004/05.
- There were 36,136 exclusions from local authority **secondary** schools, 84 per cent of the total, and equivalent to 114 exclusions per 1,000 pupils. Exclusion rates peaked during S3, with 198 exclusions per 1,000 pupils. The number of exclusions in secondary has increased by two per cent from 35,513 exclusions in 2004/05.

¹ See background note 5

- There were 1,075 exclusions from local authority **special** schools, three per cent of the total, and equivalent to 159 exclusions per 1,000 pupils.
- As in previous years exclusion rates were highest during the **Christmas to Easter term**, with mid March and the first week of February being the highest weeks.
- Ninety per cent of all temporary exclusions lasted **one week or less**. The average length was 3½ days.
- Of the 22,500 pupils excluded, 59 per cent were excluded on **one occasion only** during the year and 19 per cent were excluded twice during the year.
- Pupils from **minority ethnic groups** generally had an exclusion rate considerably lower than white-UK pupils, but with rates varying widely across the different ethnic groups². Black Caribbean pupils had the highest rates of exclusion, with Asian-Chinese the lowest.
- Although information on pupils with a disability was incomplete in the 2005 school census, where pupils had been assessed or declared as having a disability the rate of exclusion was 50 per cent higher than amongst other pupils.
- Among pupils with **additional support needs**, exclusions were generally more common in mainstream classes than in special schools. Pupils in special classes within mainstream schools had the lowest exclusion rate. Pupils with social, emotional and behavioural difficulties had the highest rates of exclusion.
- Pupils registered for **free school meals**, pupils with **additional support needs**, and pupils **looked after** by the local authority all had higher exclusion rates than other pupils. Where a pupil had all three of these factors the exclusion rate was 15 times that of pupils with none of them.
- **Reasons for exclusion** showed that 31 per cent of exclusions involved general or persistent disobedience; 25 per cent involved verbal abuse of members of staff; and 15 per cent involved insolent or offensive behaviour.
- In terms of the **cause or motivating factor** for the incident, 0.4 per cent of incidents were caused by substance abuse, 0.3 per cent were racially motivated, 0.3 per cent were due to the medical condition of the pupil, and 0.3 per cent were caused by alcohol abuse.
- Overall, there were 60 exclusions per 1,000 pupils from local authority primary, secondary, and special schools in Scotland in 2005/06. This ranged between local authorities from 122 per 1,000 pupils to 6 per 1,000 pupils.

² See background note 10

CONTENTS

- Table 1 - Exclusions by type of exclusion, 1999/2000 to 2005/06
- Chart 1 - Exclusion by type, 1999/2000 to 2005/06
- Table 2 - Exclusions, by stage and gender
- Table 3 - Exclusions per 1,000 pupils, by stage and gender
- Chart 2 - Exclusion rates, by stage and gender
-
- Table 4 - Exclusions by stage, 1998/99 to 2005/06
- Chart 3 - Number of exclusions per week
- Table 5 - Duration of temporary exclusions
- Table 6 - Number of times that pupils were temporarily excluded
- Table 7 - Number of days lost due to exclusions, with no education provision
-
- Table 8 - Education provision during exclusion
- Table 9 - Exclusions, by ethnic background of pupils
- Table 10 - Exclusions amongst pupils registered for free school meals
- Table 11 - Exclusions amongst pupils looked after by local authorities
- Table 12 - Exclusions amongst pupils with a Record of Needs or Individualised Educational Programme, by provision type
-
- Table 13 - Exclusions amongst pupils with a Record of Needs or Individualised Educational Programme, by main difficulty of learning
- Chart 4 - Exclusions per 1,000 pupils for pupils registered for free school meals, with a RoN/IEP and looked after by local authorities
- Chart 5 - Exclusions per 1,000 pupils by Scottish Index of Multiple Deprivation and free school meal registration
- Table 14 - Exclusions by motivation for incident leading to exclusion
-
- Table 15 - Exclusions by reason for exclusion
- Table 16 - Exclusions by type of exclusion and local authority
- Table 17 - Exclusions by school sector and local authority
- Table 18 - Number of different pupils excluded by sector and local authority
- Table 19 - Temporary exclusions by local authority 1999/00 to 2005/06
-
- Table 20 - Total removed from register by local authority 1999/00 to 2005/06
- Table 21 - Total exclusions by local authority 1999/00 to 2005/06
- Table 22 - Absence due to temporary exclusion
- Maps - Exclusions per pupil in primary and secondary schools, 2005/06

BACKGROUND NOTES

General background

1. Under Circulars 10/93 and 1/95, local authorities are required each year to collect certain statistics from schools on exclusions. The statistics relate to half-days of temporary exclusions and number of pupils removed from the register (previously known as 'permanent' exclusions).
2. In April 1998, the then Scottish Office issued Circular 2/98 to local authorities, informing them of a formal requirement to report, record and monitor additional information on exclusions from schools starting from the 1998/99 school year. Since 2003/04 an agreed set of information on each exclusion has been sent to the Scottish Executive as part of the ScotXed programme of data exchange.
3. Following an answer to a Parliamentary Question in June 2003, the Executive issued Circular 8/03 in November 2003, which gave revised guidance and formally informed local authorities that the target to reduce exclusions had been dropped.
4. An exclusion is temporary when a pupil is excluded from a school but remains on the register of that school because they are expected to return when the exclusion period is completed. The term 'removed from the register' refers to a pupil who is excluded and their name removed from the school register. Such a pupil would then be educated at another school or via some other form of provision.
5. Local authorities may also reach agreements with parents to move a pupil to another school without the use of a formal 'removal from register', but where the pupil is unlikely to have the option of staying in the school.

Issues relating to data

6. This survey covers local authority primary, secondary and special schools.
7. Since 2003/04 data has been collected at individual level, enabling greater analysis. This also enabled linkage to the September pupil census information. However in 2005/06 for 2,014 exclusions (five per cent) linkage to the census dataset was not possible, due mainly to a change of pupil identifier. This has been shown in all relevant tables as "**data not available**".
8. While information is received at pupil level, there was no unique pupil identifier in place throughout the year for tracking pupils who move school to another authority. This means that in analysis where the **distinction between different pupils** is important (e.g. the number of individual pupils excluded) some pupils with two or more exclusions may have been counted as separate pupils with one exclusion each. Pupils now have a unique identifier and in future years the issues raised in notes 6 and 7 will not exist.
9. It was found that information on temporary exclusions was not consistent with information on **absence due to temporary exclusion** received in the attendance survey. Validation checks have been built into information systems to ensure that consistent data is recorded, and this problem is being reduced.
10. In table 9, a two-year average of exclusion rate per 1,000 pupils has been used to reduce the instability in rates of exclusion due to small numbers in several **minority ethnic groups**. This analysis may be affected by the three per cent of pupils in the school census for whom ethnicity is not disclosed, or the 2,014 exclusions for which data could not be matched to the school census information.
11. Data was collected on whether a child was **looked after** by the local authority at the time of their exclusion from school. This indicator has been used to calculate numbers of exclusions in table 11. Figures for the number of pupils who have been looked after at any point during the year are not collected centrally. It has therefore been necessary to calculate rates based on those pupils who were looked after at the time of the census.

Other information

12. Where a figure is zero, or rounds to zero, the symbol - is used.
In data on special schools, local authorities are marked as “n/a” where there are no special schools.
13. All percentages and rates are rounded separately and breakdowns may consequently not sum to 100 per cent.
14. This report was edited by: Mal Cooke, Carrie Graham, Colin Gallacher.
15. **This is a National Statistics publication.** National Statistics are produced to high professional standards set out in the National Statistics Code of Practice. They undergo regular quality assurance reviews to ensure that they meet customer needs. They are produced free from any political interference.
16. All tables are available on the Scottish Executive website at www.scotland.gov.uk/stats/bulletins/00559

Enquiries

17. Public enquiries (non-media) about the information contained in this notice should be addressed to

Mal Cooke
Pupil, Teacher and School Statistics
Room 1B South
Victoria Quay
Edinburgh EH6 6QQ.
Telephone 0131 244 1689
or e-mail school.stats@scotland.gsi.gov.uk

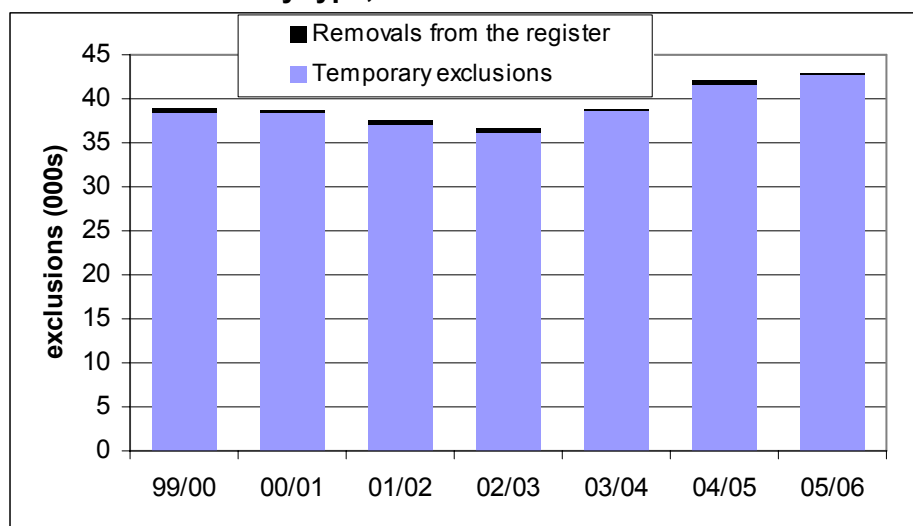
18. Media enquiries about the information in this notice should be addressed to:
Marion MacKay : 0131 244 3070

Statistics Publication Notice

30th January, 2007

Table 1: Exclusions by type of exclusion, 1999/2000 to 2005/06

	99/00	00/01	01/02	02/03	03/04	04/05	05/06
Total all exclusions	38,769	38,656	37,442	36,496	38,912	41,974	42,990
Temporary	38,409	38,334	37,110	36,204	38,736	41,703	42,726
Total removed from register	360	322	332	292	176	271	264

Chart 1: Exclusions by type, 1999/2000 to 2005/06**Table 2: Exclusions, by stage and gender, 2005/06**Primary schools⁽¹⁾

	total	P1	P2	P3	P4	P5	P6	P7
total	5,779	134	225	400	714	1,151	1,321	1,833
boys	5,253	124	193	373	631	1,073	1,204	1,655
girls	525	10	32	27	83	78	117	178

(1) one exclusion where gender and stage was not reported

Secondary schools

	total	S1	S2	S3	S4	S5	S6	Special Schools SP
total	36,136	5,570	9,444	12,400	7,723	865	134	1,075
boys	27,312	4,553	7,194	8,826	5,968	671	100	985
girls	8,824	1,017	2,250	3,574	1,755	194	34	90

Table 3: Exclusions per 1,000 pupils, by stage and gender, 2005/06Primary schools⁽¹⁾

	total	P1	P2	P3	P4	P5	P6	P7
total	14.8	2.6	4.2	7.2	12.6	20.3	22.9	31.4
boys	26.4	4.6	7.1	13.1	22.0	36.9	40.9	55.8
girls	2.7	0.4	1.2	1.0	3.0	2.8	4.1	6.2

(1) one exclusion where gender and stage was not reported

Secondary schools

	total	S1	S2	S3	S4	S5	S6	Special Schools SP
total	114.4	94.6	155.3	197.7	126.2	19.0	5.0	158.6
boys	172.4	152.2	232.1	276.1	191.8	30.4	8.1	213.6
girls	56.1	35.1	75.4	116.2	58.3	8.3	2.4	41.5

Chart 2: Exclusion rates, by stage and gender, 2005/06

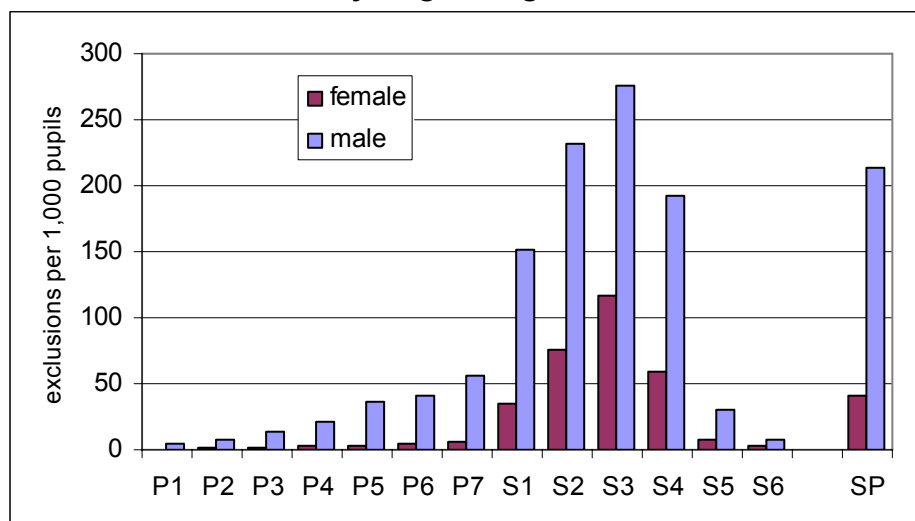


Table 4: Exclusions by stage from 1998/99 to 2005/06

Primary schools⁽¹⁾

	total	P1	P2	P3	P4	P5	P6	P7
1998/99	4,402	64	166	303	526	841	1,027	1,472
1999/00	4,495	86	141	340	471	833	1,070	1,554
2000/01	4,507	78	128	260	491	770	1,267	1,513
2001/02	4,478	112	184	327	575	835	1,053	1,392
2002/03	4,131	95	173	238	505	741	999	1,380
2003/04	4,478	80	178	322	492	851	992	1,562
2004/05	5,319	130	245	402	717	938	1,284	1,603
2005/06	5,779	134	225	400	714	1,151	1,321	1,833

(1) There were three exclusions in 1998/99, one in 2003/04 and one in 2005/06 for whom the stage of the pupil was not known – these are included in the 'total' column only.

Secondary Schools⁽²⁾

	total	S1	S2	S3	S4	S5	S6
1998/99	29,612	4,714	7,898	9,171	6,772	919	126
1999/00	33,197	5,059	8,591	10,744	7,652	985	166
2000/01	33,145	4,957	8,864	10,591	7,704	852	177
2001/02	31,767	4,481	8,224	10,651	7,335	922	154
2002/03	31,055	4,599	7,813	10,449	7,147	835	212
2003/04	33,465	5,180	8,948	11,032	7,342	807	156
2004/05	35,513	5,413	9,708	11,809	7,558	890	135
2005/06	36,136	5,570	9,444	12,400	7,723	865	134

(2) There were 12 exclusions in 1998/99 for whom the stage of the pupil was not known – these were included in the 'total' column only.

Special Schools

	total
1998/99	817
1999/00	1,077
2000/01	1,004
2001/02	1,197
2002/03	1,310
2003/04	976
2004/05	1,142
2005/06	1,075

Chart 3: Number of exclusions per week, 2005/06

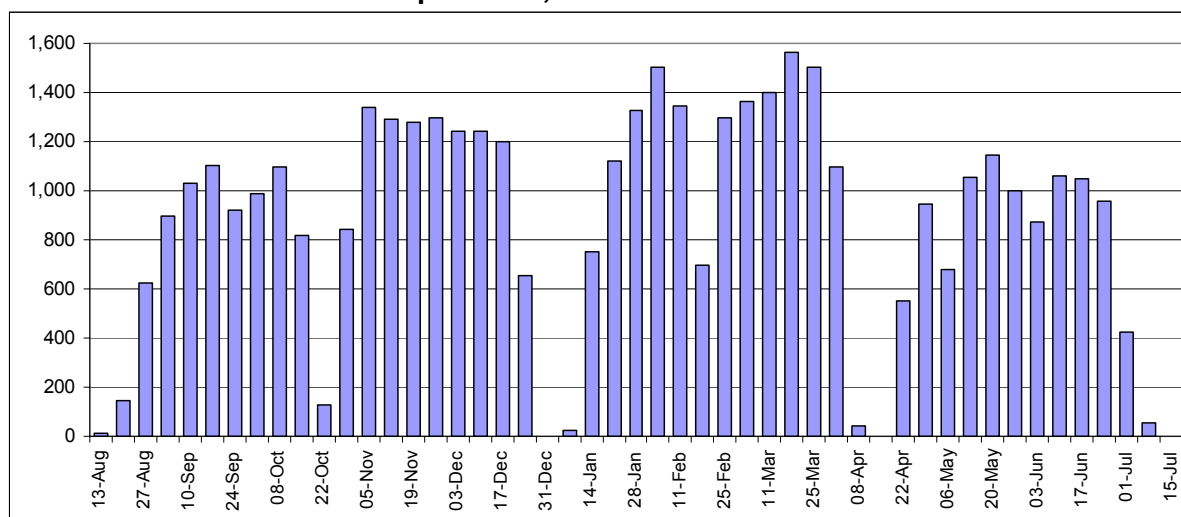


Table 5: Duration of temporary exclusions, 2005/06

days	temporary exclusions	percentage of temporary exclusions
1	6,425	15
2	10,772	25
3	12,797	30
4	3,861	9
5	4,752	11
6	960	2
7	551	1
8	307	1
9	343	1
10	1,225	3
over two weeks	733	2

Table 6: Number of times that pupils were temporarily excluded, 2005/06

number of temporary exclusions per pupil	number of pupils ⁽¹⁾	percentage of those excluded
Total	22,452	
1	13,342	59
2	4,348	19
3	2,089	9
4	1,134	5
5	675	3
6	342	2
7	204	1
8	132	1
9	78	-
10	43	-
More than 10	65	-

(1) Some pupils with two or more exclusions may have been counted as separate pupils with one exclusion each. See background note 7.

Table 7: Number of days lost due to exclusions, with no education provision⁽¹⁾, 2005/06

	days	days lost per 1,000 pupils
Temporary exclusions	126,447	178
Removal from register	2,272	3

(1) Data relates specifically to days where no alternative educational was provided, and not to the total duration of exclusions. Data missing for removals from the register. See table 22 for absence due to temporary exclusion.

Table 8: Education provision during exclusion⁽¹⁾, 2005/06

	temporary provision during temporary exclusion	interim provision following removal from register	long-term provision following removal from register
Bridge course	3	-	-
College	4	-	2
Home tuition	352	4	-
Other schools outwith LA	1	-	7
Other schools within LA	16	2	72
Special unit	42	1	1
Support base	180	-	2
Other ⁽²⁾	4,762	193	5
No provision	37,364	60	170

(1) Data show the main type of provision recorded for each exclusion.

(2) Other also includes work sent home.

Table 9: Exclusions, by ethnic background of pupils, 2005/06

	total exclusions	of which, removals	pupils excluded	total pupil numbers ⁽¹⁾	rates ⁽²⁾ exclusions	pupils
Total	42,990	264	22,514	711,883	56	30
White – UK	38,133	234	19,767	655,220	57	30
White – other	303	3	175	8,918	38	21
Mixed	179	2	102	5,189	33	20
Asian – Indian	32	-	25	2,195	16	11
Asian – Pakistani	352	4	223	8,730	38	25
Asian – Bangladeshi	2	-	2	498	7	6
Asian – Chinese	10	-	10	2,268	6	5
Asian – other	35	1	26	1,905	19	14
Black – Caribbean	17	-	8	105	162	71
Black – African	84	1	55	1,835	45	28
Black – other	37	1	23	506	92	45
Occupational Traveller	12	-	5	176	68	26
Gypsy/Traveller	17	1	10	418	64	30
Other Traveller	3	-	3	76	38	30
Other	129	1	76	2,250	58	35
Not known/not disclosed	1,631	7	842	21,594	81	41
data not available	2,014	9	1,162			

(1) Pupil number as at September 2005

(2) Exclusion rates per 1,000 pupils calculated using an average for 2004/05 and 2005/06. Exclusions where data could not be matched to census ethnicity information were not included in the calculation of the overall rate. See background note 10.

Table 10: Exclusions amongst pupils registered for free school meals, 2005/06

	number of exclusions	number of temporary exclusions	number of removals from register	rate per 1,000 pupils
All pupils	42,990	42,726	264	60
Pupils entitled to free school meals	17,115	16,991	124	150
Pupils not entitled to free school meals	23,861	23,730	131	40
Data not available	2,014	2,005	9	

Table 11: Exclusions amongst pupils looked after by local authorities, 2005/06

	number of exclusions	number of temporary exclusions	number of removals from register	rate per 1,000 pupils ⁽¹⁾
Pupils looked after by the local authority	3,046	3,026	20	337
of which at home ⁽²⁾	2,259	2,241	18	333
away from home ⁽³⁾	787	785	2	341
Not "looked after by local authority"	39,944	39,700	244	55

(1) Rates calculated on different basis to counts of exclusions. See background note 11.

(2) At home with parent(s), excluding foster parents or potential adoptive parents

(3) All other, including foster parents etc.

Table 12: Exclusions amongst pupils with a Record of Needs (RoN) or Individualised Educational Programme (IEP), by provision type, 2005/06

	number of exclusions	number of temporary exclusions	number of removals from register	rate per 1,000 pupils
Primary				
with RoN/IEP	1,258	1,258	-	81
all time in mainstream class	1,055	1,055	-	79
some time in special class	183	183	-	109
all time in special class	20	20	-	47
without RoN/IEP	3,896	3,896	-	10
data not available	605	604	1	
Secondary				
with RoN/IEP	3,943	3,921	22	328
all time in mainstream class	3,399	3,386	13	333
some time in special class	455	446	9	330
all time in special class	89	89	-	198
without RoN/IEP	30,867	30,661	206	102
data not available	1,326	1,318	8	
Special	1,075	1,068	7	159

Table 13: Exclusions amongst pupils with a Record of Needs (RoN) or Individualised Educational Programme (IEP), by main difficulty of learning and rate per 1,000 pupils, 2005/06

	primary		secondary		special	
	number	rate	number	rate	number	rate
Sensory - Significant hearing impairment	5	22	35	134	2	21
Sensory - Significant visual impairment	1	6	10	61	3	49
Significant physical or motor impairment	8	15	23	46	1	4
Significant language and speech disorder	10	8	30	93	4	28
Autistic spectrum disorder	59	34	97	118	19	21
Social emotional and behavioural difficulties	806	422	1,901	981	529	864
Moderate learning difficulties	152	47	552	222	210	123
Severe learning difficulties	32	87	44	186	6	10
Profound learning difficulties	7	121	3	120	-	-
Specific learning difficulties in language and/or mathematics (including dyslexia)	89	24	745	209	4	68
Complex or multiple impairments - Dual sensory impairment	-	-	-	-	2	105
Complex or multiple impairments - moderate learning difficulties and significant additional impairments or disorders	23	37	94	224	73	94
Complex or multiple impairments - severe learning difficulties and significant additional impairments or disorders	14	62	24	200	16	22
Other	94	61	383	336	92	253

Chart 4: Exclusions per 1,000 pupils for pupils registered for free school meals, with a RoN/IEP and looked after by local authorities, 2005/06.

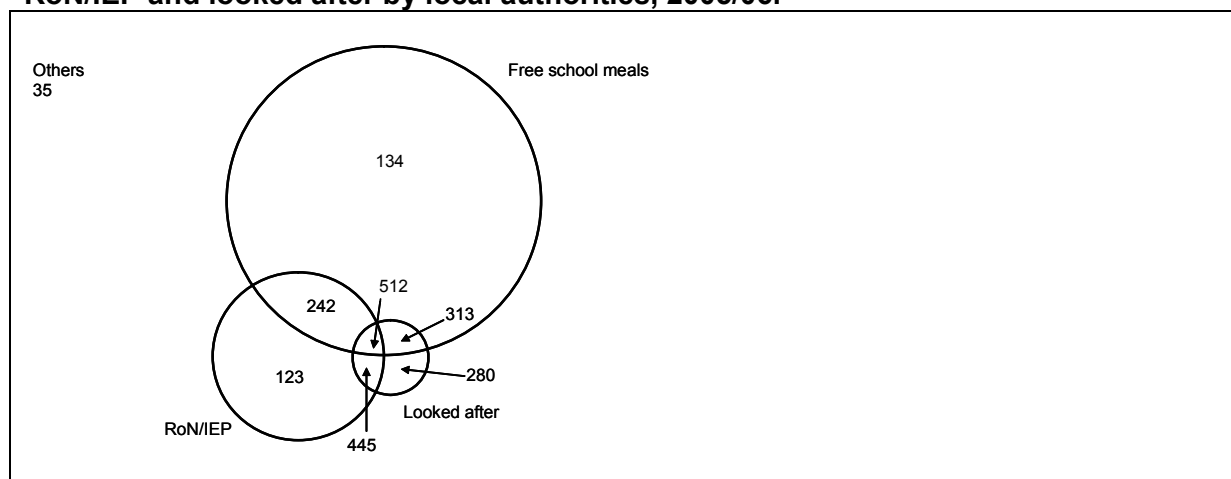


Chart 5: Exclusions per 1,000 pupils by Scottish Index of Multiple Deprivation and free school meal registration, 2005/06

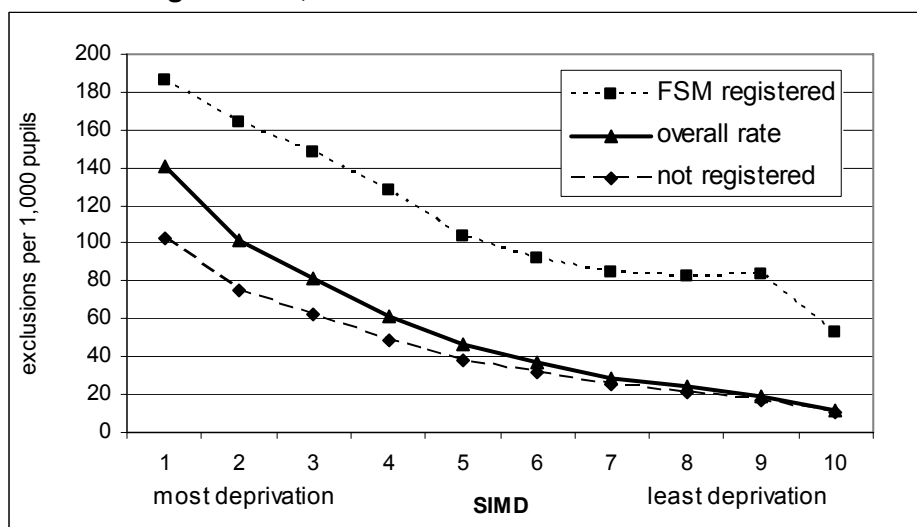


Table 14: Exclusions by motivation for incident leading to exclusion, 2005/06

An exclusion with more than one circumstance given is counted under each relevant category

	primary	secondary	special	number	percentage of exclusions
Substance misuse – not alcohol	4	162	12	178	0.4
Racial	28	103	3	134	0.3
Assailant medical condition/disability	92	9	21	122	0.3
Substance misuse – alcohol	-	111	2	113	0.3
Territorial/gang related	15	74	1	90	0.2
Gender / sexual harassment	16	47	1	64	0.1
Homophobia/ sexual orientation	12	22	1	35	0.1
Disability of victim	6	6	1	13	-
Sectarian	-	6	1	7	-
Religion	-	2	-	2	-
Other known factor⁽¹⁾	1,031	3,047	61	4,139	9.6

(1) includes retaliation and provocation

Table 15: Exclusions by reason for exclusion, 2005/06⁽¹⁾

The purpose of this table is to show what type of behaviour is the cause of most exclusions. It cannot be used as a proxy measure for the frequency of incidents, for the following reasons:-

- Problems implementing changes to the survey over the last two years, in a range of authorities, have resulted in several thousand exclusions being reported as “other”. This means that the figures are an undercount in many categories.

However, the large reduction in this problem for 2005/06 resulted in more of these exclusions being reported under their correct category. This means that any change from the previous year is inflated by these additional data. It is therefore inaccurate to make year-on-year comparisons. The problem did not affect those categories marked with a *.

- The number of exclusions is dependent on exclusion policy and local decision making, as well as the number of specific incidents.

	number	percentage for known exclusions	number of temporary exclusions	number of removals from register
General or persistent disobedience *	13,363	31	13,334	29
Verbal abuse of staff *	10,545	25	10,527	18
Insolent and offensive behaviour *	6,469	15	6,451	18
Physical assault with no weapon	5,627	13	5,535	92
Fighting *	3,938	9	3,935	3
Verbal abuse of pupil *	1,505	4	1,505	-
Threat of physical violence, no weapon	1,450	3	1,444	6
Damage to school property	1,428	3	1,417	11
Refusal to attend class *	1,169	3	1,163	6
Physical assault with improvised weapon	633	1	632	1
Threat of physical violence using weapon or improvised weapon	509	1	477	32
Substance misuse – not alcohol *	503	1	496	7
Theft *	408	1	408	-
Threat to school property	337	1	337	-
Substance misuse – alcohol *	299	1	297	2
Physical assault with weapon	247	1	245	2
Fire raising *	239	1	237	2
Malicious communications	196	-	195	1
Spitting	187	-	187	-
Damage to personal property	185	-	185	-
Threat to personal property	76	-	76	-
Parental non-cooperation *	57	-	56	1
Slander and libel (incl website)	40	-	40	-
Indecent exposure	32	-	32	-
Sustained peer exclusion for the purpose of causing significant distress	26	-	26	-
Threat of sexual violence	22	-	22	-
Extortion	19	-	19	-
Stalking	7	-	6	1
Other	6,249	14.5	6,236	13

(1) Figures are not directly comparable with 2004/05. See note above table. An exclusion with more than one circumstance given is counted under each relevant category.

* See note above table

Table 16: Exclusions by type of exclusion and local authority, 2005/06

	total exclusions	exclusions per 1,000 pupils	number of temporary exclusions	removed from register
Aberdeen City	1,712	73	1,680	32
Aberdeenshire	1,175	33	1,152	23
Angus	609	38	609	-
Argyll & Bute	722	58	722	-
Clackmannanshire	444	62	444	-
Dumfries & Galloway	759	36	759	-
Dundee City	2,272	122	2,272	-
East Ayrshire	1,339	75	1,339	-
East Dunbartonshire	710	40	708	2
East Lothian	624	46	624	-
East Renfrewshire	192	12	192	-
Edinburgh, City of	2,244	48	2,180	64
Eilean Siar	73	18	73	-
Falkirk	889	42	889	-
Fife	2,783	56	2,783	-
Glasgow City	7,377	106	7,250	127
Highland	767	24	766	1
Inverclyde	967	81	967	-
Midlothian	615	50	615	-
Moray	491	36	485	6
North Ayrshire	2,146	105	2,146	-
North Lanarkshire	3,425	68	3,417	8
Orkney Islands	17	6	17	-
Perth & Kinross	964	52	964	-
Renfrewshire	1,772	70	1,772	-
Scottish Borders	514	33	514	-
Shetland Islands	53	15	53	-
South Ayrshire	1,172	75	1,172	-
South Lanarkshire	2,586	57	2,586	-
Stirling	295	23	295	-
West Dunbartonshire	1,519	111	1,519	-
West Lothian	1,763	68	1,762	1
Local authorities	42,990	60	42,726	264

Table 17: Exclusions by school sector and local authority, and rate per 1,000 pupils, 2005/06

	primary		secondary		special	
	number	rate	number	rate	number	rate
Aberdeen City	392	31	1,237	119	83	302
Aberdeenshire	191	10	979	62	5	21
Angus	123	14	486	69	n/a	n/a
Argyll & Bute	37	5	684	119	1	23
Clackmannanshire	76	19	366	120	2	54
Dumfries & Galloway	82	7	677	71	-	-
Dundee City	344	34	1,927	229	1	8
East Ayrshire	261	27	1,073	132	5	28
East Dunbartonshire	50	5	658	79	2	13
East Lothian	56	7	568	98	-	-
East Renfrewshire	48	6	144	19	-	-
Edinburgh, City of	389	15	1,658	83	197	269
Eilean Siar	5	2	68	36	n/a	n/a
Falkirk	90	8	785	86	14	73
Fife	398	14	2,385	107	-	-
Glasgow City	874	22	6,180	217	323	175
Highland	137	8	630	42	-	-
Inverclyde	116	18	826	152	25	191
Midlothian	109	17	501	91	5	30
Moray	92	12	399	67	n/a	n/a
North Ayrshire	222	20	1,916	208	8	48
North Lanarkshire	357	13	2,794	126	274	359
Orkney Islands	1	1	16	11	n/a	n/a
Perth & Kinross	309	30	655	82	-	-
Renfrewshire	213	16	1,533	133	26	87
Scottish Borders	134	16	380	55	n/a	n/a
Shetland Islands	10	5	43	26	n/a	n/a
South Ayrshire	46	6	1,126	153	-	-
South Lanarkshire	174	7	2,329	115	83	161
Stirling	49	7	246	41	-	-
West Dunbartonshire	127	17	1,376	220	16	128
West Lothian	267	18	1,491	136	5	22
Local authorities	5,779	15	36,136	115	1,075	159

Table 18: Number of different pupils excluded by local authority, and rate per 1,000 pupils, 2005/06

	primary individuals	rate	secondary individuals	rate	special individuals	rate
Aberdeen City	190	15	681	66	32	116
Aberdeenshire	87	4	580	37	2	8
Angus	67	7	281	40	n/a	n/a
Argyll & Bute	22	3	397	69	1	23
Clackmannanshire	36	9	218	72	2	54
Dumfries & Galloway	56	5	380	40	-	-
Dundee City	166	16	905	107	1	8
East Ayrshire	85	9	575	71	4	23
East Dunbartonshire	31	3	379	45	2	13
East Lothian	34	4	284	49	-	-
East Renfrewshire	34	4	123	16	-	-
Edinburgh, City of	247	10	1,064	53	108	148
Eilean Siar	3	1	52	28	n/a	n/a
Falkirk	67	6	451	49	11	57
Fife	199	7	1,283	58	-	-
Glasgow City	497	13	2,979	105	153	83
Highland	73	4	432	29	-	-
Inverclyde	57	9	375	69	10	76
Midlothian	76	12	311	57	4	24
Moray	43	6	238	40	n/a	n/a
North Ayrshire	107	10	872	95	4	24
North Lanarkshire	209	8	1,485	67	97	127
Orkney Islands	1	1	11	8	n/a	n/a
Perth & Kinross	124	12	377	47	-	-
Renfrewshire	94	7	808	70	17	57
Scottish Borders	65	8	242	35	n/a	n/a
Shetland Islands	9	5	31	19	n/a	n/a
South Ayrshire	35	4	478	65	-	-
South Lanarkshire	103	4	1,251	62	32	62
Stirling	27	4	154	26	-	-
West Dunbartonshire	70	10	557	89	12	96
West Lothian	115	8	780	71	4	17
Local authorities	3,026	8	19,010	60	496	73

Table 19: Temporary exclusions by local authority 1999/00 to 2005/06

	1999/00	2000/01	2001/02	2002/03	2003/04	2004/05	2005/06
Aberdeen City	842	894	953	907	963	1,427	1,680
Aberdeenshire	457	575	684	790	926	1,108	1,152
Angus	515	545	649	725	686	825	609
Argyll & Bute	573	607	616	691	638	658	722
Clackmannanshire	368	340	308	302	329	432	444
Dumfries & Galloway	558	563	571	654	767	896	759
Dundee City	1,785	1,716	1,933	1,805	1,884	2,109	2,272
East Ayrshire	1,178	1,321	995	1,124	1,478	1,330	1,339
East Dunbartonshire	586	701	803	754	605	648	708
East Lothian	525	448	447	459	470	617	624
East Renfrewshire	299	261	192	220	222	211	192
Edinburgh, City of	1,685	1,730	1,688	1,789	1,750	2,010	2,180
Eilean Siar	12	17	22	27	25	52	73
Falkirk	964	884	1,098	1,231	1,015	1,167	889
Fife	3,143	3,193	3,028	3,234	3,247	3,086	2,783
Glasgow City	8,470	7,336	6,850	6,332	6,827	7,375	7,250
Highland	510	717	759	738	823	747	766
Inverclyde	1,005	1050	930	840	864	963	967
Midlothian	368	503	525	560	577	573	615
Moray	209	190	197	289	436	563	485
North Ayrshire	1,246	1,092	1,052	1,059	1,540	1,840	2,146
North Lanarkshire	3,459	3,584	3,528	3,112	3,456	3,390	3,417
Orkney Islands	8	22	15	29	52	21	17
Perth & Kinross	572	648	608	638	679	861	964
Renfrewshire	2,641	2,821	2,426	2,095	1,956	1,781	1,772
Scottish Borders	239	266	268	265	354	502	514
Shetland Islands	7	3	7	25	51	62	53
South Ayrshire	930	785	811	744	960	970	1,172
South Lanarkshire	2,369	2,417	2,288	2,163	2,547	2,610	2,586
Stirling	136	155	175	225	206	211	295
West Dunbartonshire	1,617	1,785	1,526	1,065	1,115	1,375	1,519
West Lothian	1,133	1,165	1,158	1,313	1,295	1,283	1,762
Local authorities	38,409	38,334	37,110	36,204	38,743	41,703	42,726

Table 20: Total removed from register by local authority 1999/00 to 2005/06

	1999/00	2000/01	2001/02	2002/03	2003/04	2004/05	2005/06
Aberdeen City	34	43	35	25	30	34	32
Aberdeenshire	6	17	15	13	6	24	23
Angus	-	-	-	-	-	-	-
Argyll & Bute	-	-	-	-	-	2	-
Clackmannanshire	-	-	-	-	-	-	-
Dumfries & Galloway	4	-	-	-	-	-	-
Dundee City	-	-	-	-	-	-	-
East Ayrshire	1	2	-	-	-	-	-
East Dunbartonshire	-	-	-	-	-	1	2
East Lothian	2	-	-	-	-	-	-
East Renfrewshire	11	9	15	-	-	-	-
Edinburgh, City of	106	68	117	90	27	76	64
Eilean Siar	-	1	-	1	-	-	-
Falkirk	-	-	-	-	-	-	-
Fife	-	-	-	-	-	-	-
Glasgow City	112	106	103	139	91	94	127
Highland	10	3	-	-	-	-	1
Inverclyde	1	1	-	-	-	-	-
Midlothian	6	8	9	-	-	2	-
Moray	12	6	5	3	5	6	6
North Ayrshire	2	-	-	-	-	-	-
North Lanarkshire	6	25	7	14	13	31	8
Orkney Islands	-	-	-	-	-	-	-
Perth & Kinross	-	-	-	-	-	-	-
Renfrewshire	13	8	2	-	-	-	-
Scottish Borders	2	-	2	-	1	-	-
Shetland Islands	-	-	-	-	-	-	-
South Ayrshire	5	1	-	-	-	-	-
South Lanarkshire	3	3	-	-	-	-	-
Stirling	2	-	1	-	-	-	-
West Dunbartonshire	13	17	19	2	2	1	-
West Lothian	9	4	2	5	1	-	1
Local authorities	360	322	332	292	176	271	264

Table 21: Total exclusions by local authority 1999/00 to 2005/06

	1999/00	2000/01	2001/02	2002/03	2003/04	2004/05	2005/06
Aberdeen City	876	937	988	932	993	1,461	1,712
Aberdeenshire	463	592	699	803	932	1,132	1,175
Angus	515	545	649	725	686	825	609
Argyll & Bute	573	607	616	691	638	660	722
Clackmannanshire	368	340	308	302	329	432	444
Dumfries & Galloway	562	563	571	654	767	896	759
Dundee City	1,785	1,716	1,933	1,805	1,884	2,109	2,272
East Ayrshire	1,179	1,323	995	1,124	1,478	1,330	1,339
East Dunbartonshire	586	701	803	754	605	649	710
East Lothian	527	448	447	459	470	617	624
East Renfrewshire	310	270	207	220	222	211	192
Edinburgh, City of	1,791	1,798	1,805	1,879	1,777	2,086	2,244
Eilean Siar	12	18	22	28	25	52	73
Falkirk	964	884	1,098	1,231	1,015	1,167	889
Fife	3,143	3,193	3,028	3,234	3,247	3,086	2,783
Glasgow City	8,582	7,442	6,953	6,471	6,918	7,469	7,377
Highland	520	720	759	738	823	747	767
Inverclyde	1,006	1,051	930	840	864	963	967
Midlothian	374	511	534	560	577	575	615
Moray	221	196	202	292	441	569	491
North Ayrshire	1,248	1,092	1,052	1,059	1,540	1,840	2,146
North Lanarkshire	3,465	3,609	3,535	3,126	3,469	3,421	3,425
Orkney Islands	8	22	15	29	52	21	17
Perth & Kinross	572	648	608	638	679	861	964
Renfrewshire	2,654	2,829	2,428	2,095	1,956	1,781	1,772
Scottish Borders	241	266	270	265	355	502	514
Shetland Islands	7	3	7	25	51	62	53
South Ayrshire	935	786	811	744	960	970	1,172
South Lanarkshire	2,372	2,420	2,288	2,163	2,547	2,610	2,586
Stirling	138	155	176	225	206	211	295
West Dunbartonshire	1,630	1,802	1,545	1,067	1,117	1,376	1,519
West Lothian	1,142	1,169	1,160	1,318	1,296	1,283	1,763
Local authorities	38,769	38,656	37,442	36,496	38,919	41,974	42,990

Table 22: Absence due to temporary exclusion, 2005/06⁽¹⁾

	number of half days absence			percentage of half days		
	primary	secondary	special	primary	secondary	special
Aberdeen City	2,079	10,923	335	0.04	0.29	0.35
Aberdeenshire	1,130	6,880	36	0.02	0.12	0.04
Angus	617	3,593	n/a	0.02	0.14	n/a
Argyll & Bute	236	3,223	3	0.01	0.15	0.02
Clackmannanshire	551	3,194	15	0.04	0.29	0.09
Dumfries & Galloway	626	6,096	-	0.01	0.17	-
Dundee City	2,249	11,666	8	0.06	0.38	0.02
East Ayrshire	1,540	6,187	38	0.04	0.21	0.06
East Dunbartonshire	180	3,470	10	0.01	0.11	0.02
East Lothian	250	2,961	-	0.01	0.16	-
East Renfrewshire	243	660	-	0.01	0.02	-
Edinburgh, City of	2,534	15,238	2,202	0.03	0.24	0.89
Eilean Siar	22	574	n/a	-	0.08	n/a
Falkirk	617	7,556	127	0.01	0.23	0.18
Fife	2,506	15,590	-	0.02	0.19	-
Glasgow City	5,483	41,141	2,159	0.04	0.40	0.31
Highland	982	7,767	-	0.01	0.14	-
Inverclyde	530	5,675	166	0.02	0.29	0.33
Midlothian	960	5,146	389	0.04	0.28	0.91
Moray	530	2,503	n/a	0.02	0.12	n/a
North Ayrshire	1,387	12,688	48	0.03	0.38	0.08
North Lanarkshire	2,049	15,922	2,151	0.02	0.20	0.73
Orkney Islands	4	188	n/a	-	0.04	n/a
Perth & Kinross	1,786	5,184	4	0.05	0.18	0.02
Renfrewshire	1,151	7,528	83	0.02	0.18	0.07
Scottish Borders	535	3,593	n/a	0.02	0.14	n/a
Shetland Islands	23	206	n/a	-	0.03	n/a
South Ayrshire	214	5,668	-	0.01	0.21	-
South Lanarkshire	1,284	17,276	512	0.01	0.23	0.27
Stirling	342	1,623	-	0.01	0.08	-
West Dunbartonshire	533	6,153	75	0.02	0.27	0.17
West Lothian	1,470	10,484	572	0.03	0.29	0.65

(1) Source: Attendance and Absence survey for 2005/06. Data is not necessarily consistent with data from the exclusions survey. Data is 'absence from school due to temporary exclusion' irrespective of whether alternative education is provided.

Map 1: Exclusions from primary schools by local authority, 2005/06

