



Statistics Publication Notice

Education Series

ISSN 1479-7569
ISBN 0-7559-6366-0

ATTENDANCE AND ABSENCE IN SCOTTISH SCHOOLS 2005/06

5th December, 2006

A Scottish Executive National Statistics Publication

- 1.1. This document contains the results of the attendance and absence survey for 2005/06. Information relates to local authority and mainstream grant aided schools only.

Note on interpretation of data

- 1.2. The data in this publication accurately reports the recorded information on pupils' attendance. However, these records will be affected by ongoing differences in recording procedures across local authorities.
- 1.3. As stated last year, the data suggest that several local authorities do not appear to be fully following the current guidance on the recording of absence. In 2005/06 there were still seven authorities (Argyll and Bute, East Renfrewshire, Glasgow City, Inverclyde, North Ayrshire, Renfrewshire and West Dunbartonshire) who reported high rates of "other authorised absence", where analysis of the data suggests that much of this absence is likely to be either sickness or truancy. It appears that some authorities use "other authorised absence" as the initial default for absence, with the resulting danger that unexplained absence goes unrecorded.
- 1.4. Dundee City also continue not to separately report data on pupils missing the majority of a session due to lateness.
- 1.5. **Comparisons between authorities** will therefore be affected by these differences in recording, and it should not be stated that other authorities necessarily have, for example, worse sickness or truancy rates. These differences will also affect the summary absence information used in school handbooks, the Scottish Schools Online website, and the National Priorities indicators.
- 1.6. The **national figures**, particularly for sickness, other authorised absence and truancy will also be affected. This means that year on year comparisons are not necessarily valid if individual local authorities have progressively implemented the guidance.

- 1.7. The Scottish Executive guidance also states that family holidays during term time should only be authorised under exceptional circumstances. Although the numbers are reducing, there are still several authorities which appear to be authorising a large number of such holidays.

Summary information for 2005/06 (excluding S6)

- 2.1. The overall rate of **attendance** was 93.1 per cent, slightly up from 93.0 per cent in 2004/05.
- 2.2. The rate of attendance for primary schools remained at 95.0 per cent. The rate for secondary schools was 90.4 per cent (90.2 per cent in 2004/05). The rate for special schools was 90.7 per cent (91.0 per cent in 2004/05).
- 2.3. As in previous years, attendance at **stages** P1 and P7 was fairly stable, ranging from 94.7 per cent to 95.2 per cent. It then decreased steadily through to S4 (88.8 per cent), before increasing slightly in S5 and S6. Overall there was little difference in rates between boys and girls. However, boys did have noticeably better attendance rates from S4 to S6.
- 2.4. Seventy-nine per cent of pupils (including S6) had an attendance rate of 90 per cent or above. About 32,000 pupils (five per cent) had a **100 per cent attendance** record. As last year, these figures only include pupils when they are at a school for more than half the year. The proportion of pupils with a 100 per cent attendance record has remained constant.

Reported reasons for absence (including S6 pupils)

- 3.1. Within the overall absence rate of 6.9 per cent, 3.2 per cent of days were recorded as **sickness** (about 4.20 million pupil-days). Sickness rates increase suddenly in secondary school, particularly amongst girls. Deprivation increased the likelihood of being absent due to sickness. The increase this year in reported sickness rates is again likely to be due to more accurate reporting of the sickness cases, where some schools were previously reporting them as "other authorised absence". However, there still appear to be many schools not recording sickness correctly.
- 3.2. The second most commonly reported reason for absence continued to be "**other authorised absence**", which accounted for 2.1 per cent of days. The drop from the 2.5 per cent in 2004/05 (3.5 per cent in 2003/04) shows the improvement in the recording practices of some local authorities. This category should only include lack of transport, weddings, bereavements, religious observances, sporting and cultural events not arranged by the school, and attendance at hearings.
- 3.3. About 139,000 pupils (20 per cent) who attended a school for more than half the year were recorded as **truancy** at least once during 2005/06, with less than ten per cent of pupils responsible for 90 per cent of time lost due to truancy, and less than two per cent of pupils responsible for 50 per cent of truancy.
- 3.4. 0.7 per cent of days (just below one million pupil-days) were lost due to truancy. Truancy rates throughout primary remain level for both girls and boys at 0.3 per cent (0.4 per cent last year). They then rise steeply until reaching their peak at 1.8 per cent in S4. Pupils registered for free school meals had a truancy rate four times that of other pupils in primary. This difference drops along secondary and reverses in S6.
- 3.5. As in 2004/05, 0.5 per cent of days were lost due to **holidays**, which equates to a total of 661,000 pupil-days lost, or just less than one day per pupil. Under a third of these days were authorised by the school. Although the amount of holidays has not decreased, schools are increasingly recording these as unauthorised.
- 3.6. 140,000 pupils (20 per cent, compared to 19 per cent in 2004/05) took holidays during term, but the average of just under five days each is slightly less than in 2004/05. Holiday absence rates were highest in primary school and lowest in S4 to S6.

- 3.7. As in 2004/05, 0.1 per cent of days were lost due to **exceptional domestic circumstances**. These were mainly short term and are considered authorised absence.
- 3.8. Absence from school due to **temporary exclusion** accounted for 0.1 per cent of days, as in the previous two years.

Punctuality (including S6)

- 4.1. Pupils were recorded **late** on 1.5 per cent of openings. Of these 98 per cent were recorded as arriving during the first half of the morning or afternoon.
- 4.2. As in 2004/05, there was a sharp increase in recorded lateness between P7 and S1, reaching a peak in S3. Boys continue to be late more often than girls in secondary.

Summary absence information (excluding S6)

- 5.1. Total **authorised absence** in primary schools was 4.1 per cent, in secondary schools it was 7.5 per cent, and in special schools 6.8 per cent.
- 5.2. Total **unauthorised absence** in primary schools was 0.9 per cent, in secondary schools it was 1.8 per cent, and in special schools it was 2.2 per cent.
- 5.3. Absence due to **temporary exclusion** in primary schools was 0.02 per cent, in secondary schools it was 0.23 per cent, and in special schools it was 0.36 per cent.
- 5.4. As in 2004/05, per pupil, the average total absence in primary schools was just under two **school weeks** (19 half days), out of a possible 38 school weeks; in secondary schools it was slightly above three and a half school weeks, (36 half days) and in special schools the figure was just above three and a half school weeks (35 half days) out of a possible 38 school weeks.

Analysis of absence (including S6 pupils)

- 6.1. On average, each day there were around 50,000 **pupils absent** (seven per cent), of which about 22,700 were sick, 5,000 were truanting, 3,600 were on holiday, and about 800 temporarily excluded.
- 6.2. About 444,000 pupils (64 per cent) had no **unauthorised absence** during the year, with 89 per cent of pupils having no more than one week unauthorised absence. Eleven per cent of pupils were responsible for 75 per cent of unauthorised absence.
- 6.3. Authorised absence rates were slightly higher amongst **girls** than **boys**, with unauthorised absence rates being fairly equal, and absence due to temporary exclusion being higher amongst boys.
- 6.4. Pupils living in **urban** areas were absent more often than those in rural areas.
- 6.5. In general, schools with higher levels of **deprivation** had higher levels of absence, with the effect being greater in secondary school. There were many schools which did not follow this trend. Pupils who were registered for free school meals were absent for an average of just below ten days more than those who were not, with the difference being greater amongst boys.
- 6.6. Pupils with a **Record of Needs** or Individualised Educational Programme in mainstream schools were absent for an average of four and a half days more than other pupils in those

schools, with the difference being greater in secondary school. Of these, pupils with social and emotional behavioural difficulties have the highest rate of absence.

- 6.7. **Children looked after** by local authorities were absent on average ten more days than other pupils, with those looked after at home missing on average just above five and a half weeks of school.
- 6.8. Where a child has **multiple risk factors** (is registered for free meals, has a Record of Needs and is looked after) they are on average absent for just below five and a half weeks.
- 6.9. Attendance rates varied across the different **ethnic groups**, from 96 per cent among Asian Chinese to 77 per cent among Gypsy travellers.

Local authority analysis

- 7.1. As stated in the introduction, comparisons of local authority data will be affected by the extent to which they have **complied with guidance** on recording absence. One aspect of non-compliance is that until the reason for an absence is explained, schools are meant to record a pupil as “unexplained absence” (part of the truancy category). However, it appears that some authorities use “other authorised absence” as the default. There is a danger that this will result in lower truancy/unexplained absence figures for these authorities.
- 7.2. The percentage **attendance** in **primary** schools by local authority ranged from 93.3 per cent (Glasgow City) to 96.3 per cent (East Dunbartonshire), and in **secondary** schools from 87.1 per cent (Glasgow City) to 94.1 per cent (East Renfrewshire). The range in attendance rates reflects the differing prevalence of risk factors, as previously identified, found in local authority populations.

BACKGROUND NOTES

Definitions

1. The Scottish Executive Circular 5/03, including its annex and addendum, updated guidelines from the Scottish Office Circulars 1/95 and 10/95, giving specific guidance to schools and education authorities on the categorisation of attendance and absence.
2. **Holidays** taken during term time must be categorised as unauthorised absence. However, it is acceptable under exceptional circumstances for schools to authorise a family holiday during term time. Such circumstances may include a family holiday judged to be important to the wellbeing and cohesion of the family, following serious or terminal illness, bereavement or other traumatic events. It should *not* include such reasons as the availability of cheap holidays, the availability of desired accommodation, poor weather experienced during school holidays, holidays which overlap the beginning or end of term, or parental difficulty obtaining leave (with local judgement applied in cases where evidence is provided by the employer that it cannot accommodate leave during school holidays without serious consequences).
3. Pupils arriving **late** are marked as such, with a distinction made for those arriving in the second half of a morning or the second half of the afternoon. Where summary data is necessary, if a pupil has attended most of an opening it is counted as attendance, but if they have been absent for most of a session it is included as authorised absence. They are of course still separately identified as being late but present for some of the time in the schools' systems for management purposes. Schools were also given the possibility of including all late marks on a pupil's record as attendance, if it is deemed beneficial for encouraging attendance. The distinction is also used in judging attendance records of those receiving bursaries and allowances.
4. Further details can be obtained from the circular and addendum <http://www.scotland.gov.uk/library5/education/edc05-00.asp>
<http://www.scotland.gov.uk/library5/education/ac503a-00.asp>
5. Prior to 2003/04, information was collected at school level, by stage up to S5, in the four categories: attendance, authorised absence, unauthorised absence due to temporary exclusion, other unauthorised absence. From 2003/04 information is collected at individual level, enabling linkage to pupil characteristics collected in the pupil census, and is collected in the wider range of attendance and absence categories published in this document.
6. The Scottish Executive has published draft attendance guidance for consultation. Consultation on *Engaged and Involved* will last from 5 December 2006 until 27 February 2007. The draft guidance:
 - Clarifies classification and recording requirements
 - Addresses wider issues of promotion and management of attendance
 - Strengthens links between absence and protection of children.The consultation paper is available from www.scotland.gov.uk/consultations

Problems with the data

7. While information is received at pupil level, the new unique pupil identifier which could be used for tracking pupils who move school was not fully available for the 2005/06 attendance data. This means that in analysis where pupils are counted (e.g. proportion of pupils with 90 per cent or more attendance) pupils who have moved schools during the academic year would have been counted as two pupils with part year data rather than one pupil with full data. To avoid this, in these calculations we have included only those pupils who have been in a school for over half a year. In other analysis, where data has been linked to pupil characteristics from the pupil census, we are only able to use the attendance record from the original school. This was possible for 94 per cent of pupils. The overall summary figures however are unaffected by this problem.

8. As stated in the introduction, several local authorities do not appear to be using the full range of absence categories and are recording most authorised absences as “other authorised absence”. This does not affect the summary attendance rates for these authorities. It does however affect the detailed categories of absence, both at local and national level.
9. We understand that some local authorities are using “other authorised absence” as the default for as yet unexplained absences. There is a danger that this incorrectly reduces their unauthorised absence rates. Dundee City Council have not reported their late figures on the same basis as other authorities, which would slightly increase their attendance rates.

Coverage

10. Attendance and absence information is provided to the Scottish Executive by the local authorities and managers of mainstream grant-aided schools. This report does not give information on attendance and absence in grant-aided special schools, independent schools or pre-school establishments.
11. The information shown for attendance and absence is for the academic year. Schools which closed during the 2005/06 session, and for which data was available, were included.
12. The attendance and absence of S6 pupils have been excluded from some of the summary figures as they are beyond the age of compulsory schooling. However, S6 pupils have been included in the analysis of attendance and absence by stage and other pupil characteristics. Each table states whether S6 pupils have been included.

Calculation

13. Percentages for authorised and unauthorised absence relate to the total number of possible attendances. For many schools this is 380 half-day sessions during the school year. However, all schools in the Lothians and Edinburgh and three schools in Highland operate 342 (longer) half-day sessions in the school year.
14. The local authority average is the average number of half-days authorised or unauthorised absence for all pupils in local authority schools only, based on a 380 half day year (i.e. scaled up for the Lothians and Edinburgh). The national average is the average number of half-days authorised or unauthorised absence for local authority and mainstream grant-aided schools in Scotland.
15. All percentages are rounded separately, figures may consequently not sum to 100 per cent.

General

16. **This is a National Statistics publication.** National Statistics are produced to high professional standards set out in the National Statistics Code of Practice. They undergo regular quality assurance reviews to ensure that they meet customer needs. They are produced free from any political interference.
17. The tables and charts are also available through the following link:
<http://www.scotland.gov.uk/stats/bulletins/00548>
18. The report was edited by: Mal Cooke, Paula Lopez, Carrie Graham and Colin Gallacher
19. Public enquiries (non-media) about the information contained in this Statistical Publication Notice should be addressed to: Mal Cooke, Scottish Executive Education Department, Room 1-B, Victoria Quay, Edinburgh EH6 6QQ. Telephone 0131 244 1689 or e-mail school.stats@scotland.gsi.gov.uk.
20. Media enquiries about the information in this Statistical Publication Notice should be addressed to: Marion Mackay 0131 244 3070

5th December, 2006

Contents

Reasons for absence

1.1	Percentage attendance and absence by reason
1.2	Percentage attendance by stage and gender
1.3	Percentage days absent due to sickness, by deprivation
Chart 1	Percentage days absent due to sickness, by stage
Chart 2	Percentage of pupils responsible for truancy.
Chart 3	Percentage of days absent due to truancy, by stage and gender
Chart 4	Percentage of days absent due to truancy, by stage and deprivation
Chart 5	Percentage of days lost due to holidays, by stage
Chart 6	Percentage of pupils taking holidays, by length of holidays
Chart 7	Times late, as a percentage of attendances, by stage and gender

Summary statistics

2.1	Number of half days attendance and absence, by sector
2.2	Percentage of days attendance and absence, by sector
Chart 8	Percentage absence by stage and gender
Chart 9	Percentage of pupils by their attendance rate
Chart 10	Percentage of pupils by number of days unauthorised absence
Chart 11	Percentage attendance and absence, by urban/rural classification of school
Chart 12	Relationship between proportion of pupils registered for free school meals in a school and its absence rate
Chart 13	Attendance rate by Scottish Index of Multiple Deprivation and free school meals registration
2.3	Percentage of days attendance and absence, by deprivation and gender
2.4	Percentage attendance and absence of pupils looked after by local authorities
2.5	Percentage attendance and absence of pupils in mainstream schools with RoN/IEP
Chart 14	Attendance rates for pupils with free school meals, RoN/IEP, and looked after by LA
2.6	Percentage attendance and absence of pupils by main difficulty of learning
2.7	Percentage attendance and absence by ethnic background

Local authority data

3.1	Percentage attendance and absence, by reason, primary, secondary and special
3.2	Percentage attendance and absence, by reason, primary
3.3	Percentage attendance and absence, by reason, secondary
3.4	Percentage attendance and absence, by reason, special

Local authority summaries

4.1	Average half days and percentage attendance and absence by local authority, primary (National Priorities indicator 2.2)
4.2	Average half days and percentage attendance and absence by local authority, secondary (National Priorities indicator 2.2)
4.3	Average half days and percentage attendance and absence by local authority, special (National Priorities indicator 2.2)
Map 1	Attendance rate by local authority 2005/06, primary
Map 2	Attendance rate by local authority 2005/06, secondary

Table 1.1: Percentage attendance and absence by reason⁽¹⁾

	primary			secondary ⁽²⁾			special			total ⁽²⁾		
	2003/04	2004/05	2005/06	2003/04	2004/05	2005/06	2003/04	2004/05	2005/06	2003/04	2004/05	2005/06
<i>attendance</i>												
in school	94.7	94.4	94.4	87.5	87.4	87.6	90.3	90.2	89.8	91.6	91.4	91.4
late	0.5	0.6	0.6	2.2	2.3	2.4	0.3	0.3	0.4	1.2	1.3	1.4
work experience	-	-	-	0.4	0.4	0.4	0.3	0.3	0.4	0.2	0.2	0.2
sickness with education provision	-	-	-	0.1	-	-	0.1	0.2	0.1	-	-	-
<i>absence</i>												
sickness without education provision	1.4	2.1	2.3	2.5	3.8	4.3	1.5	2.4	2.8	1.9	2.8	3.2
very late	-	-	-	0.1	0.1	0.1	-	-	-	-	-	-
authorised holidays	0.2	0.2	0.2	0.2	0.1	0.1	0.3	0.3	0.3	0.2	0.2	0.1
exceptional domestic circumstances	-	0.1	0.1	0.2	0.2	0.2	0.1	0.1	0.1	0.1	0.1	0.1
other authorised	2.3	1.7	1.5	5.2	3.6	2.9	4.8	3.8	3.5	3.5	2.5	2.1
unauthorised holidays	0.3	0.4	0.4	0.2	0.3	0.3	0.1	0.2	0.2	0.3	0.3	0.4
truancy	0.3	0.4	0.3	1.1	1.3	1.2	1.5	1.7	1.7	0.7	0.8	0.7
exceptional domestic circumstances (unauthorised)	-	-	-	-	-	-	-	-	-	-	-	-
other unauthorised	0.1	0.2	0.1	0.2	0.3	0.3	0.3	0.2	0.4	0.2	0.2	0.2
temporary exclusion	-	-	-	0.2	0.2	0.2	0.4	0.4	0.4	0.1	0.1	0.1

(1) This information will be affected by differing reporting practices across local authorities and over time

(2) including S6

Table 1.2: Percentage attendance by stage and gender

	girls	boys	total
P1	94.7	94.7	94.7
P2	94.8	94.9	94.9
P3	95.1	95.2	95.1
P4	95.1	95.3	95.2
P5	95.2	95.0	95.1
P6	95.1	95.0	95.1
P7	95.2	94.9	95.0
S1	93.1	92.7	92.9
S2	91.1	91.1	91.1
S3	88.8	89.3	89.1
S4	88.5	89.2	88.8
S5	89.8	90.7	90.3
S6	90.5	91.6	91.0
SP	91.4	90.4	90.7
primary	95.0	95.0	95.0
secondary ⁽¹⁾	90.3	90.6	90.4
special	91.4	90.4	90.7
total ⁽¹⁾	93.0	93.1	93.1

(1) excluding S6

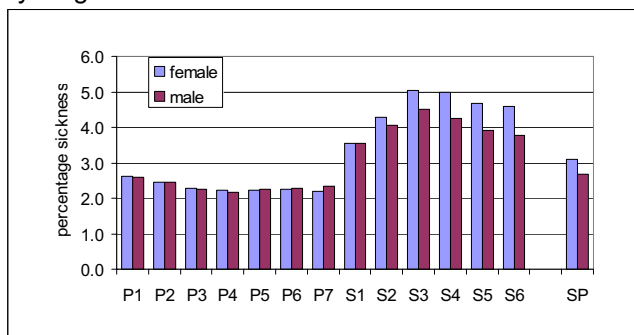
Table 1.3: Percentage days absent due to sickness⁽¹⁾, by deprivation (registered for free school meals)⁽²⁾

		percentage absence	average number of half days absence
girls	not registered for fsm	3.1	11.9
	registered for fsm	4.1	15.6
boys	not registered for fsm	2.9	11.1
	registered for fsm	3.8	14.5
total	not registered for fsm	3.0	11.5
	registered for fsm	4.0	15.0

(1) sickness without education provision

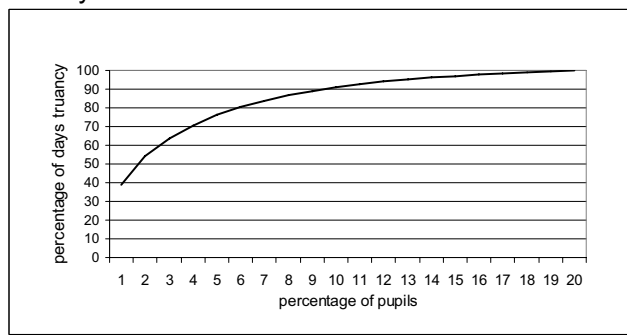
(2) including S6

Chart 1: Percentage days absent due to sickness⁽¹⁾, by stage



(1) sickness without education provision. This information will be affected by differing reporting practices across local authorities.

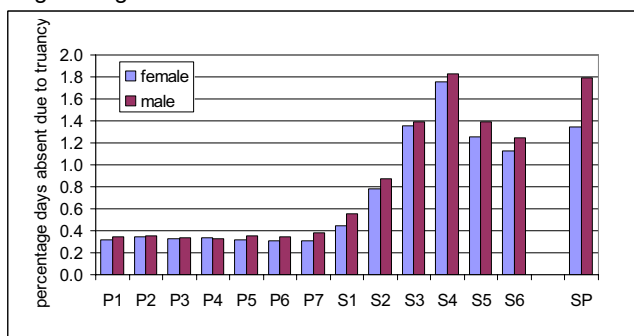
Chart 2: Percentage of pupils responsible for truancy^{(1),(2)}



(1) The chart shows how much of the truancy is the responsibility of how many pupils. So for example reading up from the values on the horizontal axis, one per cent of pupils are responsible for 39 per cent of the truancy, or ten per cent of pupils are responsible for 91 per cent of truancy.

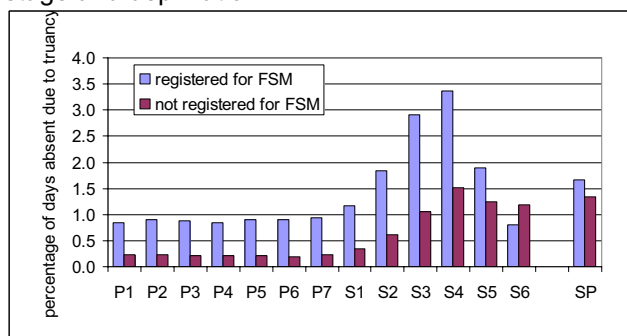
(2) including S6. This information will be affected by differing reporting practices across local authorities.

Chart 3: Percentage of days absent due to truancy, by stage and gender⁽¹⁾



(1) This information will be affected by differing reporting practices across local authorities.

Chart 4: Percentage of days absent due to truancy, by stage and deprivation⁽¹⁾



(1) This information will be affected by differing reporting practices across local authorities.

Chart 5: Percentage of days lost due to holidays, by stage

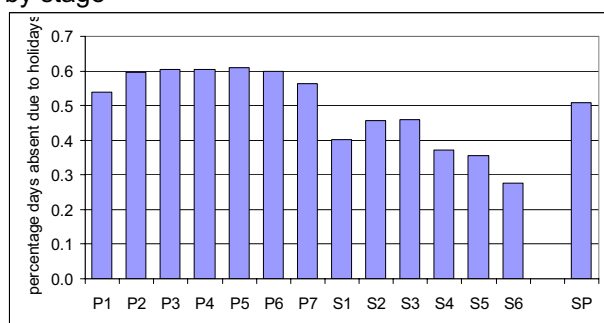
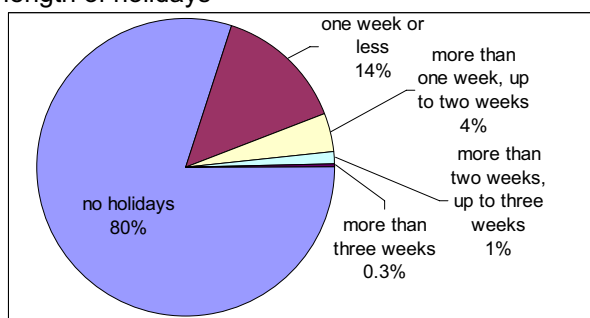


Chart 6: Percentage of pupils taking holidays, by length of holidays^{(1),(2)}



(1) total days holiday during the year
(2) including S6

Chart 7: Times late, as a percentage of attendances, by stage and gender

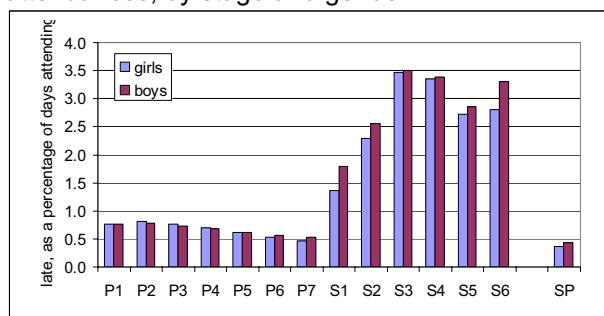


Table 2.1: Number of half days attendance and absence, by sector⁽¹⁾

	possible attendances	attendance	authorised absence	unauthorised absence	absence due to temporary exclusion
primary	144,672,328	137,463,302	5,885,585	1,288,794	34,647
secondary	104,842,144	94,799,431	7,909,762	1,887,125	245,826
special	2,499,748	2,266,709	168,918	55,188	8,933
total	252,014,220	234,529,442	13,964,265	3,231,107	289,406

(1) excluding S6. This information will be affected by differing reporting practices across local authorities.

Table 2.2: Percentage of days attendance and absence, by sector⁽¹⁾

	attendance	authorised absence	unauthorised absence	absence due to temporary exclusion	average number of half days absence
primary	95.0	4.1	0.9	0.02	18.9
secondary	90.4	7.5	1.8	0.23	36.4
special	90.7	6.8	2.2	0.36	35.4
total	93.1	5.5	1.3	0.11	26.4
girls	93.0	5.7	1.3	0.05	26.6
boys	93.1	5.4	1.3	0.18	26.2

(1) excluding S6. This information will be affected by differing reporting practices across local authorities.

Chart 8: Percentage absence by stage and gender

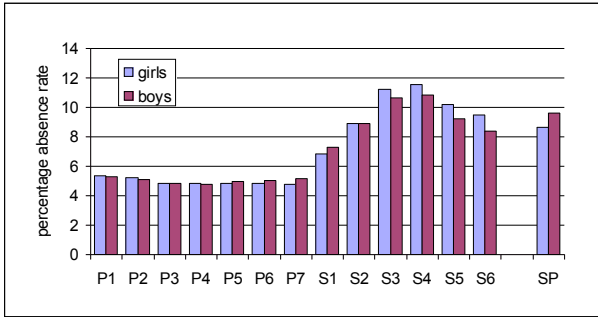
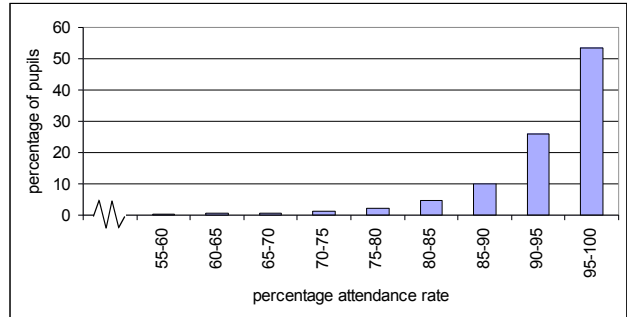
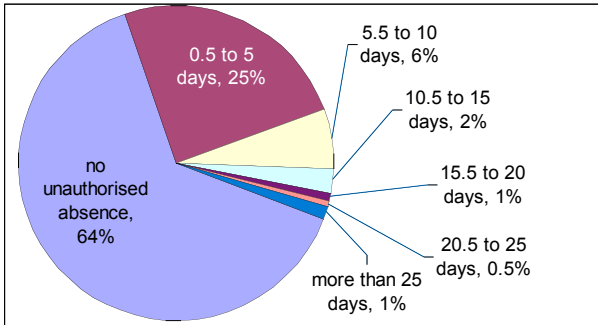


Chart 9: Percentage of pupils by their attendance rate^{(1),(2)}



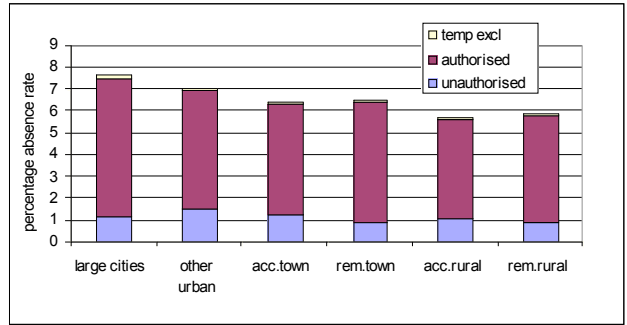
(1) including S6
(2) only pupils that were at a school for more than half the year are included

Chart 10: Percentage of pupils by number of days unauthorised absence^{(1),(2)}



(1) including S6. This information will be affected by differing reporting practices across local authorities.
(2) only pupils that were at a school for more than half the year are included

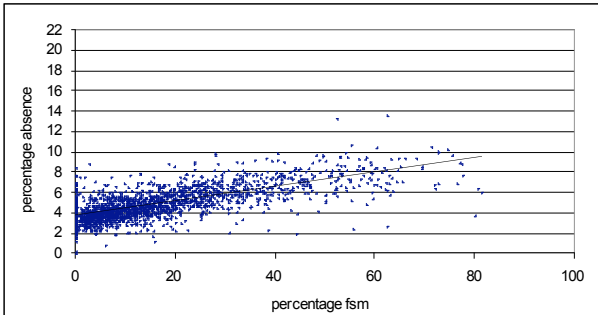
Chart 11: Percentage attendance and absence, by urban/rural classification of pupils⁽¹⁾



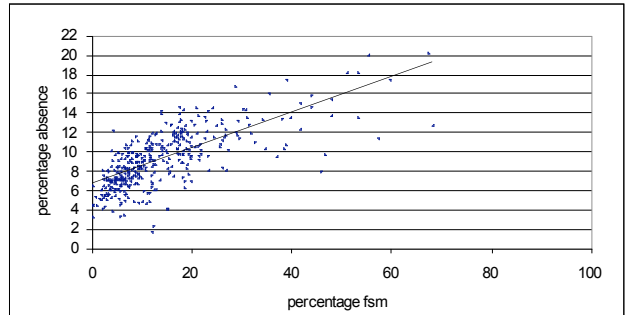
(1) including S6. This information will be affected by differing reporting practices across local authorities.

Chart 12: Relationship between proportion of pupils registered for free school meals in a school and its absence rate

Primary



Secondary



In each of the above charts, each "dot" represents a school and the line shows the best fitting trend line

Chart 13: Attendance rate by Scottish Index of Multiple Deprivation and free school meal registration

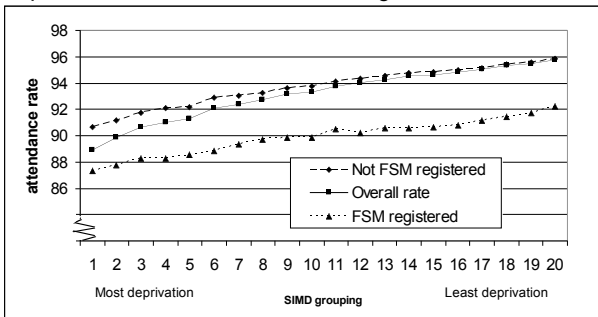


Table 2.3: Percentage of days attendance and absence, by deprivation (registered for free school meals) and gender⁽¹⁾

		attendance	authorised absence	unauthorised absence	absence due to temporary exclusion	average number of half days absence
girls	not registered	93.8	5.1	1.1	-	23.7
	registered	88.8	9.0	2.1	0.1	42.6
boys	not registered	94.0	4.8	1.1	0.1	22.9
	registered	88.7	8.7	2.2	0.4	43.1
all pupils	not registered	93.9	4.9	1.1	0.1	23.3
	registered	88.7	8.8	2.1	0.3	42.8

(1) including S6. This information will be affected by differing reporting practices across local authorities.

Table 2.4: Percentage attendance and absence of pupils looked after by local authorities⁽¹⁾

	attendance	authorised absence	unauthorised absence	absence due to temporary exclusion	average number of half days absence
looked after at home	84.8	9.5	4.9	0.8	57.7
looked after away from home	91.5	5.5	2.3	0.8	32.4
all pupils looked after by LA	87.9	7.7	3.7	0.8	46.2
not looked after by LA	93.1	5.5	1.2	0.1	26.2

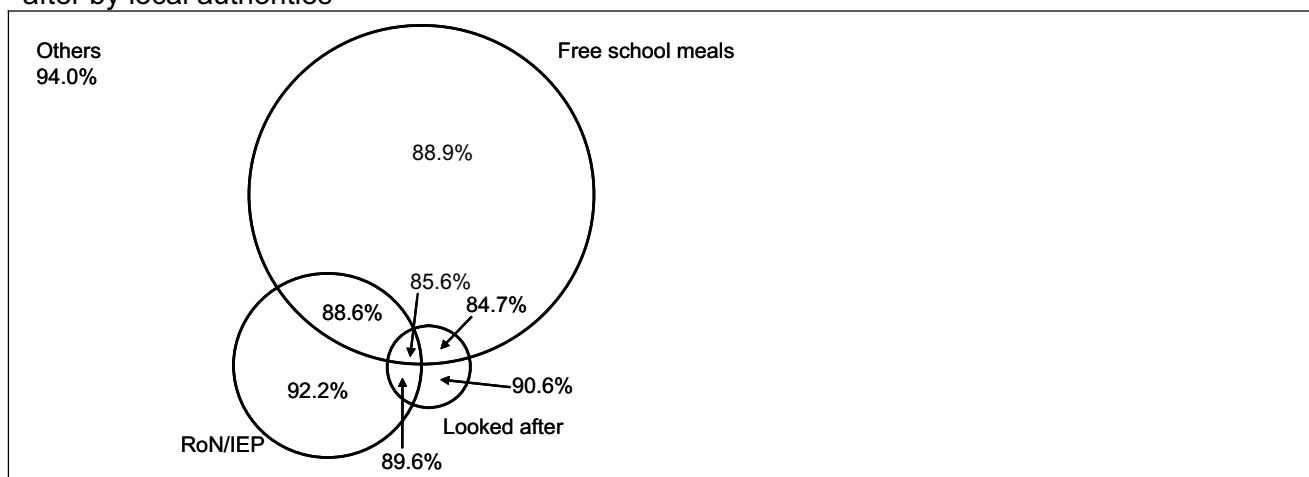
(1) including S6. This information will be affected by differing reporting practices across local authorities.

Table 2.5: Percentage attendance and absence of pupils in mainstream schools with RoN/IEP⁽¹⁾

		attendance	authorised absence	unauthorised absence	absence due to temporary exclusion	average number of half days absence
primary	with RoN/IEP	93.6	5.1	1.2	0.2	24.4
	no RoN/IEP	95.1	4.0	0.9	-	18.5
secondary	with RoN/IEP	87.1	8.7	3.5	0.7	49.1
	no RoN/IEP	90.7	7.4	1.7	0.2	35.4
total	with RoN/IEP	90.8	6.7	2.2	0.4	35.0
	no RoN/IEP	93.2	5.5	1.2	0.1	26.0

(1) including S6. This information will be affected by differing reporting practices across local authorities.

Chart 14: Attendance rates for pupils registered for free school meals, with RoN/IEP, and looked after by local authorities



Overlapping areas represent where a pupil is in more than one group. The areas of the chart represent the approximate size of the groups. S6 pupils are included.

Table 2.6: Percentage attendance and absence of pupils by main difficulty of learning⁽¹⁾
Primary and Secondary

	attendance	authorised absence	unauthorised absence	absence due to temporary exclusion	average number of half days absence
Significant hearing impairment	92.5	6.2	1.2	0.2	28.7
Significant visual impairment	91.6	7.0	1.4	0.1	32.0
Significant physical or motor impairment	90.7	8.0	1.2	-	35.2
Significant language and speech disorder	94.1	4.8	1.1	-	22.5
Autistic spectrum disorder	94.3	4.6	1.0	0.1	21.7
Social emotional and behavioural difficulties	85.7	7.5	5.2	1.6	54.3
<i>Learning difficulties:</i>					
Moderate learning difficulties	90.7	6.8	2.3	0.2	35.4
Severe learning difficulties	91.9	6.2	1.7	0.3	31.0
Profound learning difficulties	91.8	5.5	2.4	0.2	31.0
Specific - in language and/or mathematics (including dyslexia)	91.2	6.6	1.9	0.2	33.3
<i>Complex or multiple impairments:</i>					
Dual sensory impairment	94.0	5.3	0.6	-	22.6
Moderate learning difficulties and significant additional impairments or disorders	91.6	6.8	1.3	0.2	31.8
Severe learning difficulties and significant additional impairments or disorders	92.1	6.6	1.1	0.2	29.9
Profound learning difficulties and significant additional impairments or disorders	91.6	7.7	0.7	-	32.0
Other	90.3	7.8	1.6	0.3	36.8

(1) including S6. This information will be affected by differing reporting practices across local authorities.

Special⁽¹⁾

	attendance	authorised absence	unauthorised absence	absence due to temporary exclusion	average number of half days absence
Significant hearing impairment	93.2	6.5	0.3	-	25.8
Significant visual impairment	93.6	5.9	0.3	0.2	24.4
Significant physical or motor impairment	93.4	5.9	0.7	-	25.1
Significant language and speech disorder	95.2	4.4	0.4	-	18.1
Autistic spectrum disorder	95.1	4.3	0.5	0.1	18.4
Social emotional and behavioural difficulties	78.7	9.9	8.9	2.5	81.1
<i>Learning difficulties:</i>					
Moderate learning difficulties	90.7	6.5	2.6	0.2	35.5
Severe learning difficulties	93.6	5.8	0.6	-	24.3
Profound learning difficulties	92.1	7.4	0.5	-	29.9
Specific - in language and/or mathematics (including dyslexia)	91.0	7.1	1.8	0.1	34.1
<i>Complex or multiple impairments:</i>					
Dual sensory impairment	95.4	3.7	0.6	0.3	17.4
Moderate learning difficulties and significant additional impairments or disorders	92.3	6.3	1.3	0.2	29.4
Severe learning difficulties and significant additional impairments or disorders	93.1	6.2	0.7	-	26.4
Profound learning difficulties and significant additional impairments or disorders	88.0	11.7	0.3	-	45.7
Other	87.4	8.1	4.0	0.5	48.0

(1) This information will be affected by differing reporting practices across local authorities

Table 2.7: Percentage attendance and absence by ethnic background^{(1),(2)}

	number of pupils	attendance	authorised absence	unauthorised absence	absence due to temporary exclusion
White UK	654,850	93	6	1	0.1
White Other	8,870	93	6	1	0.1
Mixed	5,190	94	5	1	0.1
Asian Indian	2,220	92	6	1	-
Asian Pakistani	8,740	91	7	1	0.1
Asian Bangladeshi	490	91	7	2	-
Asian Chinese	2,270	96	3	1	-
Asian other	1,900	93	6	1	-
Black Caribbean	100	92	5	2	0.3
Black African	1,820	95	4	1	0.1
Black Other	510	90	8	2	0.1
Occupational Traveller ⁽¹⁾	170	88	10	1	0.1
Gypsy traveller ⁽¹⁾	410	77	15	8	0.1
Other traveller ⁽¹⁾	80	80	16	5	0.1
Other	2,240	92	6	2	0.1
Not disclosed/ not known	7,050	92	6	2	0.2

(1) Local authorities may mark traveller children as authorised absent, even when they are on extended leave, in order to keep a place for them on the school roll

(2) including S6. This information will be affected by differing reporting practices across local authorities.

Table 3.1: Percentage attendance and absence, by reason⁽¹⁾, primary, secondary⁽²⁾ and special

	Attendance	Attending but late	Work Experience	Sick, with education provision	Sick, no education provision	Very late	Authorised holidays	Exceptional Domestic Circum	Other Authorised	Unauthorised holidays	Truancy	Ex Dom Circum unauthorised	Other unauthorised	Temporary exclusion
Aberdeen City	91.5	1.6	0.1	-	4.3	-	-	-	0.7	0.5	0.9	-	0.1	0.2
Aberdeenshire	94.2	0.4	-	-	3.7	-	0.1	0.4	0.2	0.3	0.5	-	0.1	0.1
Angus	92.8	0.9	0.2	-	3.3	0.1	0.1	0.3	0.6	0.4	0.9	-	0.3	0.1
Argyll & Bute	92.5	0.9	0.2	-	-	-	0.1	-	5.6	0.2	0.3	-	-	0.1
Clackmannanshire	92.0	1.5	0.1	-	3.8	-	-	0.2	-	0.7	1.1	0.3	-	0.1
Dumfries & Galloway	94.1	0.6	0.2	-	3.2	-	-	-	0.8	0.4	0.4	-	0.2	0.1
Dundee City	89.1	2.5	0.2	-	4.3	N/A	0.1	0.8	-	0.4	0.1	-	2.1	0.2
East Ayrshire	91.4	1.1	0.2	-	5.6	-	0.2	-	0.7	0.3	0.4	-	-	0.1
East Dunbartonshire	93.0	1.3	0.2	-	4.7	-	0.1	-	0.1	0.4	0.1	-	-	0.1
East Lothian	92.8	0.8	0.4	-	3.8	-	0.1	-	0.4	0.6	0.9	-	0.1	0.1
East Renfrewshire	93.8	1.3	0.2	-	-	-	0.1	-	4.2	0.2	-	-	0.1	-
Edinburgh, City of	89.8	2.6	0.3	0.1	4.0	0.1	0.2	-	0.8	0.4	1.3	-	0.2	0.1
Eilean Siar	93.4	0.2	0.3	-	4.3	-	0.1	0.4	0.4	0.3	0.3	0.1	0.1	-
Falkirk	90.9	1.1	0.2	-	4.4	-	0.2	0.1	0.4	0.5	1.2	0.1	0.8	0.1
Fife	91.8	1.0	0.2	0.1	3.8	0.1	0.2	0.1	0.6	0.5	1.3	-	0.3	0.1
Glasgow City	88.3	2.4	0.1	-	0.1	-	0.3	-	7.9	0.1	0.6	-	-	0.2
Highland	92.4	0.8	0.2	-	4.0	-	0.1	0.2	1.1	0.2	0.6	-	0.2	0.1
Inverclyde	91.2	1.4	0.2	-	-	-	0.1	-	6.6	0.2	0.2	-	-	0.1
Midlothian	91.9	1.2	-	-	4.1	-	0.1	0.1	0.2	0.6	1.4	0.1	-	0.2
Moray	92.6	1.1	0.2	-	1.3	-	0.2	-	3.1	0.3	0.5	-	0.6	0.1
North Ayrshire	90.7	1.7	0.1	-	-	-	0.2	-	5.5	0.4	0.8	-	0.2	0.2
North Lanarkshire	90.5	1.2	0.2	-	6.5	-	-	-	0.1	0.6	0.6	-	-	0.1
Orkney Islands	94.0	0.8	0.1	0.1	3.2	0.1	-	0.1	0.2	0.5	0.9	-	0.1	-
Perth & Kinross	92.7	0.9	0.2	-	2.9	-	-	-	0.9	0.5	1.0	0.1	0.5	0.1
Renfrewshire	91.6	1.4	0.2	-	0.1	-	0.1	-	5.8	0.4	0.2	-	-	0.1
Scottish Borders	93.4	0.7	0.2	0.1	2.5	-	0.1	0.3	1.3	0.5	0.5	-	0.2	0.1
Shetland Islands	94.0	0.4	0.2	-	3.7	-	0.3	0.1	0.8	0.3	0.2	-	-	-
South Ayrshire	91.7	1.0	0.2	-	3.2	-	0.1	-	1.0	0.6	1.9	-	-	0.1
South Lanarkshire	91.4	1.5	0.3	-	4.9	-	0.3	-	1.0	0.2	0.3	-	-	0.1
Stirling	91.8	0.9	0.2	-	3.6	0.1	0.4	-	1.4	0.3	0.7	-	0.7	-
West Dunbartonshire	90.1	2.1	0.2	-	-	-	0.1	-	6.7	0.3	0.2	-	-	0.1
West Lothian	92.5	1.0	-	-	3.8	-	0.5	0.4	0.4	0.1	0.8	-	0.1	0.1
Grant Aided	96.3	-	0.3	0.1	2.4	-	-	-	0.3	0.3	-	-	0.1	-

(1) Some differences between authorities are likely to be due to different recording practices. See paragraphs 1.2 to 1.7 in page 1.

(2) excluding S6

(3) Dundee City did not report two codes for late categories

Table 3.2 Percentage attendance and absence, by reason⁽¹⁾, primary

	Attendance	Attending but late	Work Experience	Sick, with education provision	Sick, no education provision	Very late	Authorised holidays	Exceptional Domestic Circum	Other Authorised	Unauthorised holidays	Truancy	Ex Dom Circum unauthorised	Other unauthorised	Temporary exclusion
Aberdeen City	94.2	0.7	-	-	3.5	-	-	-	0.4	0.6	0.5	-	-	-
Aberdeenshire	95.8	0.1	-	-	3.0	-	0.1	0.2	0.1	0.4	0.2	-	0.1	-
Angus	95.4	0.2	-	-	2.6	-	-	-	0.8	0.5	0.2	-	0.2	-
Argyll & Bute	95.1	0.3	-	-	-	-	0.1	-	3.8	0.2	0.3	-	-	-
Clackmannanshire	94.3	0.7	-	-	3.4	-	-	0.2	-	0.8	0.2	0.2	-	-
Dumfries & Galloway	95.8	0.2	-	-	2.6	-	-	-	0.6	0.5	0.1	-	0.2	-
Dundee City	93.2	1.1	-	-	3.6	N/A	0.1	0.4	-	0.5	-	-	1.0	0.1
East Ayrshire	94.5	0.5	-	-	3.5	-	0.2	-	0.6	0.4	0.2	-	-	-
East Dunbartonshire	95.9	0.3	-	-	2.9	-	0.1	-	0.1	0.4	0.1	-	-	-
East Lothian	95.1	0.5	-	-	3.0	-	0.1	-	0.2	0.6	0.5	-	-	-
East Renfrewshire	95.7	0.5	-	-	-	-	0.1	-	3.2	0.3	0.1	-	0.1	-
Edinburgh, City of	93.2	1.4	-	0.1	3.2	-	0.2	-	0.5	0.5	0.7	-	0.1	-
Eilean Siar	95.1	-	-	-	3.6	-	0.1	0.4	0.2	0.4	-	0.1	-	-
Falkirk	94.5	0.5	-	-	3.5	-	0.2	0.1	0.2	0.5	0.3	-	0.2	-
Fife	94.3	0.6	-	-	2.9	-	0.2	-	0.5	0.6	0.5	-	0.3	-
Glasgow City	92.1	1.1	-	-	-	-	0.3	-	5.6	0.1	0.6	-	-	-
Highland	95.0	0.3	-	-	3.1	-	0.2	-	0.9	0.2	0.1	-	0.2	-
Inverclyde	94.2	0.5	-	-	-	-	0.1	-	4.7	0.2	0.2	-	-	-
Midlothian	94.3	0.8	-	-	3.2	-	0.1	0.1	0.1	0.6	0.7	0.1	-	-
Moray	95.2	0.3	-	-	0.4	-	0.2	-	3.3	0.2	0.2	-	0.1	-
North Ayrshire	94.0	0.8	-	-	-	-	0.1	-	4.2	0.6	0.2	-	-	-
North Lanarkshire	93.9	0.6	-	-	3.9	-	-	-	0.1	0.7	0.6	-	-	-
Orkney Islands	95.5	0.2	-	0.1	3.1	-	0.1	0.1	0.3	0.6	-	-	0.2	-
Perth & Kinross	95.2	0.2	-	-	2.3	-	-	-	0.9	0.6	-	-	0.6	-
Renfrewshire	94.7	0.7	-	-	-	-	0.1	-	3.9	0.4	0.1	-	-	-
Scottish Borders	95.5	0.3	-	0.1	2.0	-	-	0.2	0.9	0.6	0.1	-	0.2	-
Shetland Islands	95.3	0.1	-	-	3.1	-	0.3	0.1	0.5	0.3	0.1	-	-	-
South Ayrshire	94.8	0.5	-	-	2.7	-	0.1	-	0.5	0.6	0.7	-	-	-
South Lanarkshire	94.7	0.5	-	-	3.1	-	0.3	-	0.7	0.3	0.3	-	-	-
Stirling	94.6	0.5	-	-	3.1	-	0.6	-	0.6	0.2	-	-	0.3	-
West Dunbartonshire	93.9	0.9	-	-	-	-	0.1	-	4.4	0.4	0.1	-	-	-
West Lothian	94.7	0.6	-	-	3.1	-	0.5	0.3	-	0.2	0.5	-	-	-
Grant Aided	97.6	-	-	-	1.8	-	-	-	0.2	0.4	-	-	-	-

(1) Some differences between authorities are likely to be due to different recording practices. See paragraphs 1.2 to 1.7 in page 1.

(2) Dundee City did not report two codes for late categories

Table 3.3 Percentage attendance and absence, by reason⁽¹⁾, secondary⁽²⁾

	Attendance	Attending but late	Work Experience	Sick, with education provision	Sick, no education provision	Very late	Authorised holidays	Exceptional Domestic Circum	Other Authorised	Unauthorised holidays	Truancy	Ex Dom Circum unauthorised	Other unauthorised	Temporary exclusion
Aberdeen City	88.0	2.9	0.3	-	5.3	0.1	-	-	1.0	0.4	1.5	-	0.1	0.3
Aberdeenshire	92.1	0.8	0.1	-	4.6	0.1	0.1	0.6	0.3	0.3	0.9	-	0.1	0.1
Angus	89.1	1.9	0.6	-	4.3	0.2	0.1	0.7	0.3	0.3	1.8	-	0.5	0.1
Argyll & Bute	89.0	1.8	0.5	-	0.1	-	-	-	7.9	0.2	0.3	-	-	0.2
Clackmannanshire	88.5	2.6	0.3	-	4.4	0.1	-	0.2	0.1	0.6	2.5	0.4	-	0.3
Dumfries & Galloway	91.8	1.0	0.6	-	3.9	-	-	-	1.0	0.3	0.8	-	0.2	0.2
Dundee City	83.6	4.3	0.4	-	5.3	N/A	0.1	1.3	-	0.4	0.3	0.1	3.7	0.4
East Ayrshire	87.3	1.9	0.5	-	8.3	-	0.1	-	0.7	0.3	0.6	-	-	0.2
East Dunbartonshire	89.4	2.5	0.5	-	6.8	0.1	-	-	0.1	0.3	0.1	-	-	0.1
East Lothian	89.4	1.2	1.0	-	5.0	0.1	0.1	0.1	0.8	0.5	1.5	-	0.2	0.2
East Renfrewshire	91.4	2.3	0.4	-	0.1	-	-	-	5.6	0.2	-	-	-	-
Edinburgh, City of	84.9	4.4	0.8	-	5.1	0.1	0.1	-	1.2	0.4	2.3	-	0.3	0.3
Eilean Siar	91.1	0.5	0.7	-	5.2	0.1	0.2	0.4	0.5	0.3	0.6	0.2	0.2	0.1
Falkirk	85.8	2.1	0.5	-	5.8	0.1	0.1	0.1	0.6	0.5	2.5	0.1	1.6	0.2
Fife	88.3	1.5	0.4	0.1	5.0	0.1	0.2	0.3	0.6	0.4	2.4	0.1	0.4	0.2
Glasgow City	82.4	4.4	0.4	-	0.1	-	0.2	-	11.6	0.1	0.4	-	-	0.4
Highland	88.9	1.6	0.5	-	5.1	0.1	0.1	0.5	1.4	0.2	1.3	-	0.2	0.2
Inverclyde	87.1	2.7	0.3	0.1	-	-	0.1	-	9.1	0.1	0.1	-	-	0.3
Midlothian	88.7	1.8	-	-	5.4	0.1	0.1	0.2	0.4	0.6	2.3	0.1	-	0.3
Moray	89.1	2.2	0.5	-	2.6	-	0.2	-	2.7	0.3	1.0	-	1.2	0.1
North Ayrshire	86.2	2.9	0.3	0.1	0.1	-	0.3	-	7.4	0.2	1.6	-	0.5	0.4
North Lanarkshire	85.9	2.1	0.5	-	10.1	-	-	-	0.1	0.4	0.6	-	-	0.2
Orkney Islands	92.0	1.6	0.1	0.1	3.5	0.2	-	0.2	-	0.3	1.9	-	-	-
Perth & Kinross	89.0	1.9	0.4	-	3.9	0.1	-	-	0.8	0.4	2.5	0.2	0.5	0.2
Renfrewshire	87.5	2.5	0.5	-	0.1	0.1	-	-	8.3	0.4	0.4	-	-	0.2
Scottish Borders	90.6	1.2	0.4	-	3.2	0.1	0.1	0.5	1.9	0.4	1.2	-	0.3	0.1
Shetland Islands	92.2	0.8	0.5	-	4.6	0.1	0.3	-	1.2	0.2	0.2	-	-	-
South Ayrshire	87.9	1.8	0.5	-	3.8	0.1	-	0.1	1.7	0.5	3.4	-	-	0.2
South Lanarkshire	87.0	2.9	0.6	-	7.3	-	0.1	-	1.4	0.1	0.2	-	-	0.3
Stirling	88.2	1.4	0.4	-	4.2	0.1	0.1	-	2.4	0.3	1.5	-	1.2	0.1
West Dunbartonshire	85.3	3.7	0.5	-	-	-	0.2	-	9.6	0.1	0.3	-	-	0.3
West Lothian	89.2	1.7	0.1	-	4.9	0.1	0.4	0.5	0.9	0.1	1.3	0.1	0.3	0.3
Grant Aided	95.2	-	0.6	0.2	3.0	-	-	-	0.4	0.3	-	-	0.3	-

(1) Some differences between authorities are likely to be due to different recording practices. See paragraphs 1.2 to 1.7 in page 1.

(2) excluding S6

(3) Dundee City did not report two codes for late categories

Table 3.4 Percentage attendance and absence, by reason⁽¹⁾, special

	Attendance	Attending but late	Work Experience	Sick, with education provision	Sick, no education provision	Very late	Authorised holidays	Exceptional Domestic Circum	Other Authorised	Unauthorised holidays	Truancy	Ex Dom Circum unauthorised	Other unauthorised	Temporary exclusion
Aberdeen City	86.4	0.1	0.6	-	5.3	-	0.2	-	5.0	0.3	1.6	0.1	0.1	0.3
Aberdeenshire	94.0	0.2	0.2	-	4.1	0.1	0.4	0.2	-	0.1	0.5	-	0.2	-
Angus														
Argyll & Bute	92.6	-	1.3	-	-	-	0.4	-	5.5	-	0.2	-	-	-
Clackmannanshire	92.9	0.1	-	0.6	3.6	-	0.6	0.1	0.1	0.4	1.1	0.1	0.2	0.1
Dumfries & Galloway	96.0	-	-	-	3.5	-	-	-	-	0.4	-	-	-	-
Dundee City	92.9	-	-	-	5.7	N/A	0.2	0.8	-	0.1	-	-	0.2	-
East Ayrshire	94.8	-	0.2	-	1.6	-	0.6	0.1	1.9	0.1	0.7	-	-	0.1
East Dunbartonshire	93.9	0.1	0.3	0.5	3.7	-	0.3	-	0.3	0.2	0.2	-	0.5	-
East Lothian														
East Renfrewshire	89.8	-	-	4.3	-	-	0.1	-	4.5	1.2	-	-	-	-
Edinburgh, City of	87.0	0.8	0.5	-	4.2	-	0.4	0.1	2.9	0.1	1.3	-	1.8	0.9
Eilean Siar														
Falkirk	90.4	0.3	0.5	0.1	4.7	-	0.3	0.2	1.2	0.3	1.4	0.1	0.3	0.2
Fife	91.5	0.2	0.1	-	5.3	-	0.9	-	1.3	0.5	0.1	-	0.2	-
Glasgow City	90.4	0.4	0.3	0.2	0.7	-	0.4	0.1	5.5	0.1	1.5	-	0.1	0.3
Highland	93.0	0.1	-	-	4.5	-	-	-	1.8	-	0.1	-	0.5	-
Inverclyde	91.7	0.3	0.5	-	0.2	-	0.1	0.1	6.2	0.5	0.1	-	-	0.3
Midlothian	89.0	0.9	-	0.1	3.2	-	-	-	2.0	0.5	1.7	-	1.5	0.9
Moray														
North Ayrshire	93.3	0.2	0.1	-	0.3	-	0.5	0.1	4.3	0.1	1.1	-	-	0.1
North Lanarkshire	86.5	0.5	0.5	0.1	4.6	-	0.2	-	2.5	0.3	3.8	-	-	0.7
Orkney Islands														
Perth & Kinross	94.4	0.1	-	-	1.4	-	-	-	2.9	0.2	-	-	1.1	-
Renfrewshire	91.3	0.4	0.2	-	0.2	-	0.2	0.1	6.2	0.3	1.0	-	-	0.1
Scottish Borders														
Shetland Islands														
South Ayrshire	95.7	-	-	-	1.3	-	0.5	-	2.3	0.1	-	-	0.1	-
South Lanarkshire	87.5	0.3	0.9	-	4.7	-	0.3	-	2.6	0.1	3.3	-	-	0.3
Stirling	90.4	-	-	0.4	6.6	-	0.7	0.8	0.8	-	0.1	-	0.1	-
West														
Dunbartonshire	85.6	0.3	0.2	-	0.8	-	0.2	0.1	7.8	0.3	3.9	-	0.6	0.2
West Lothian	89.4	0.1	-	-	4.5	-	0.4	0.6	0.8	0.1	2.5	-	1.0	0.6

(1) Some differences between authorities are likely to be due to different recording practices. See paragraphs 1.2 to 1.7 in page 1.

(2) Dundee City did not report two codes for late categories

Table 4.1: Average half days and percentage attendance and absence by local authority⁽¹⁾, primary (National Priorities indicator 2.2)

	average number of half days				percentage of half days			
	attendance	authorised absence	unauthorised absence	absence due to temporary exclusions	attendance	authorised absence	unauthorised absence	absence due to temporary exclusion
Aberdeen City	361	15	4	-	95.0	3.9	1.1	0.04
Aberdeenshire	364	13	2	-	95.9	3.4	0.6	0.02
Angus	363	13	3	-	95.6	3.5	0.9	0.02
Argyll & Bute	363	15	2	-	95.4	4.0	0.6	0.01
Clackmannanshire	361	14	5	-	95.1	3.7	1.2	0.04
Dumfries & Galloway	365	12	3	-	96.0	3.2	0.7	0.01
Dundee City	358	16	6	-	94.3	4.1	1.5	0.06
East Ayrshire	361	16	2	-	95.0	4.3	0.6	0.04
East Dunbartonshire	366	12	2	-	96.3	3.2	0.6	0.01
East Lothian	363	12	4	-	95.6	3.3	1.1	0.01
East Renfrewshire	366	13	2	-	96.2	3.3	0.5	0.01
Edinburgh, City of	360	15	5	-	94.7	4.0	1.3	0.03
Eilean Siar	362	16	2	-	95.1	4.3	0.5	0.00
Falkirk	361	15	4	-	94.9	4.0	1.1	0.01
Fife	361	14	5	-	94.9	3.7	1.4	0.02
Glasgow City	354	23	3	-	93.3	5.9	0.7	0.04
Highland	362	16	2	-	95.3	4.2	0.5	0.01
Inverclyde	360	18	2	-	94.7	4.8	0.4	0.02
Midlothian	361	13	5	-	95.1	3.5	1.4	0.04
Moray	363	15	2	-	95.5	4.0	0.5	0.02
North Ayrshire	360	17	3	-	94.8	4.4	0.8	0.03
North Lanarkshire	359	15	5	-	94.6	4.1	1.3	0.02
Orkney Islands	364	13	3	-	95.7	3.4	0.8	0.00
Perth & Kinross	363	12	5	-	95.5	3.2	1.2	0.05
Renfrewshire	362	16	2	-	95.4	4.1	0.5	0.02
Scottish Borders	364	12	3	-	95.9	3.2	0.9	0.02
Shetland Islands	363	15	2	-	95.5	4.0	0.5	0.00
South Ayrshire	362	13	5	-	95.2	3.4	1.4	0.01
South Lanarkshire	362	16	2	-	95.2	4.2	0.6	0.01
Stirling	362	16	2	-	95.1	4.3	0.6	0.01
West Dunbartonshire	361	17	2	-	94.9	4.6	0.5	0.02
West Lothian	362	15	3	-	95.4	3.9	0.7	0.03
Local authorities	361	15	3	-	95.0	4.1	0.9	0.02
Grant Aided	371	8	1	-	97.6	2.0	0.4	0.00

(1) Some differences between authorities are likely to be due to different recording practices. See paragraphs 1.2 to 1.7 in page 1.

Table 4.2: Average half days and percentage attendance and absence by local authority⁽¹⁾, secondary⁽²⁾
(National Priorities indicator 2.2)

	average number of half days				percentage of half days			
	attendance	authorised absence	unauthorised absence	absence due to temporary exclusions	attendance	authorised absence	unauthorised absence	absence due to temporary exclusion
Aberdeen City	347	24	8	1	91.2	6.4	2.1	0.31
Aberdeenshire	354	21	5	-	93.0	5.6	1.3	0.13
Angus	348	21	10	1	91.5	5.6	2.7	0.15
Argyll & Bute	347	30	2	1	91.3	8.0	0.5	0.16
Clackmannanshire	348	18	13	1	91.5	4.8	3.4	0.31
Dumfries & Galloway	355	19	5	1	93.4	5.0	1.4	0.19
Dundee City	336	26	17	2	88.4	6.8	4.5	0.41
East Ayrshire	341	35	3	1	89.7	9.2	0.9	0.22
East Dunbartonshire	351	27	2	-	92.4	7.0	0.4	0.12
East Lothian	349	23	8	1	91.7	6.0	2.1	0.17
East Renfrewshire	358	22	1	-	94.1	5.7	0.2	0.02
Edinburgh, City of	342	25	12	1	90.1	6.5	3.1	0.26
Eilean Siar	351	24	5	-	92.3	6.4	1.2	0.09
Falkirk	336	26	18	1	88.3	6.8	4.7	0.25
Fife	343	24	12	1	90.3	6.2	3.2	0.21
Glasgow City	331	46	2	2	87.1	12.0	0.5	0.42
Highland	346	27	6	1	91.0	7.1	1.7	0.15
Inverclyde	343	35	1	1	90.2	9.3	0.2	0.31
Midlothian	344	23	11	1	90.5	6.2	3.0	0.31
Moray	349	21	10	-	91.8	5.5	2.6	0.12
North Ayrshire	340	30	9	2	89.5	7.8	2.3	0.41
North Lanarkshire	336	39	4	1	88.5	10.3	1.0	0.21
Orkney Islands	357	15	9	-	93.8	3.9	2.3	0.04
Perth & Kinross	347	18	14	1	91.3	4.8	3.7	0.19
Renfrewshire	344	33	3	1	90.5	8.6	0.7	0.19
Scottish Borders	351	22	7	1	92.2	5.7	1.9	0.15
Shetland Islands	355	23	2	-	93.4	6.2	0.4	0.03
South Ayrshire	343	22	15	1	90.1	5.7	4.0	0.23
South Lanarkshire	344	34	1	1	90.5	8.9	0.4	0.25
Stirling	342	26	12	-	90.1	6.8	3.0	0.08
West Dunbartonshire	340	38	2	1	89.4	9.9	0.4	0.29
West Lothian	346	26	7	1	91.1	6.9	1.7	0.31
Local authorities	344	29	7	1	90.4	7.6	1.8	0.23
Grant Aided	365	13	2	-	95.9	3.4	0.6	0.01

(1) Some differences between authorities are likely to be due to different recording practices. See paragraphs 1.2 to 1.7 in page 1.

(2) Excludes S6

Table 4.3: Average half days and percentage attendance and absence by local authority⁽¹⁾, special (National Priorities indicator 2.2)

	average number of half days				percentage of half days			
	attendance	authorised absence	unauthorised absence	absence due to temporary exclusions	attendance	authorised absence	unauthorised absence	absence due to temporary exclusion
Aberdeen City	331	40	8	1	87.0	10.5	2.1	0.3
Aberdeenshire	359	18	3	-	94.5	4.7	0.8	-
Angus								
Argyll & Bute	357	22	1	-	93.9	5.9	0.2	-
Clackmannanshire	356	17	7	-	93.6	4.5	1.8	0.1
Dumfries & Galloway	365	14	2	-	96.0	3.6	0.4	-
Dundee City	353	26	1	-	93.0	6.7	0.3	-
East Ayrshire	361	16	3	-	95.0	4.2	0.8	0.1
East Dunbartonshire	360	16	4	-	94.7	4.3	1.0	-
East Lothian								
East Renfrewshire	358	18	5	-	94.1	4.6	1.2	-
Edinburgh, City of	335	29	12	3	88.2	7.6	3.3	0.9
Eilean Siar								
Falkirk	347	24	8	1	91.3	6.4	2.1	0.2
Fife	349	29	3	-	91.8	7.5	0.7	-
Glasgow City	347	25	6	1	91.3	6.7	1.7	0.3
Highland	354	24	2	-	93.1	6.3	0.6	-
Inverclyde	352	25	2	1	92.5	6.5	0.6	0.3
Midlothian	342	20	14	3	90.0	5.3	3.8	0.9
Moray								
North Ayrshire	356	20	4	-	93.6	5.2	1.2	0.1
North Lanarkshire	333	28	16	3	87.7	7.4	4.2	0.7
Orkney Islands								
Perth & Kinross	359	16	5	-	94.4	4.2	1.3	-
Renfrewshire	350	25	5	-	92.0	6.7	1.3	0.1
Scottish Borders								
Shetland Islands								
South Ayrshire	364	16	1	-	95.7	4.1	0.2	-
South Lanarkshire	337	29	13	1	88.7	7.6	3.4	0.3
Stirling	345	34	1	-	90.8	9.0	0.2	-
West Dunbartonshire	327	34	18	1	86.1	8.9	4.8	0.2
West Lothian	340	24	14	2	89.6	6.2	3.6	0.6
Local authorities	345	26	8	1	90.7	6.8	2.2	0.4

(1) Some differences between authorities are likely to be due to different recording practices. See paragraphs 1.2 to 1.7 in page 1.

The table below gives the full definitions of attendance and absence from 2003/04, for use in National Priorities indicator 2.2

<p>Attendance</p> <p><i>participation in the programme of educational activities arranged by the school.</i></p> <p>In addition to actual attendance within the school premises, it covered:</p> <ul style="list-style-type: none"> • work experience • educational visits • day and residential visits to outdoor centres • college/consortium school study • interviews and visits relating to further and/or higher education • debates, sports, musical or theatrical productions etc. arranged by, or in conjunction with, the school • activities in connection with psychological services • school medical examinations off-site • study leave • receiving tuition via hospital or outreach teaching services • medical and dental appointments • sickness with appropriate educational provision
<p>Authorised absence</p> <ul style="list-style-type: none"> • sickness without education provision • short-term exceptional domestic circumstances • family holidays in exceptional circumstances only <p>Other authorised absence, including:</p> <ul style="list-style-type: none"> • bereavement • lack of transport - including due to bad weather • religious observance • meetings prior to and in court • attendance at or in connection with a Children's Hearing or Care Review • weddings of immediate family • agreed debates, sports, musical or theatrical productions not arranged by or in conjunction with the school • extended absence in relation to children of travelling families
<p>Unauthorised absence</p> <ul style="list-style-type: none"> • truancy (unauthorised absence from school for any period as a result of premeditated or spontaneous action on the part of pupil, parent or both) and unexplained absence • long-term exceptional domestic circumstances • family holidays during term time, other than in exceptional circumstances • other unauthorised absences, e.g. where a parent is in dispute with a school
<p>Absence due to temporary exclusion</p>
<p>Extended leave</p> <p>recorded separately outwith the figures for attendance and absence, and includes circumstances such as:</p> <ul style="list-style-type: none"> • extended overseas educational trips not organised by the school • short-term parental placement abroad • family returning to its country of origin (to care for a relative, or for cultural reasons)