
Dumfries & Galloway Constabulary

Annual Performance Review - 2000

Report of HM Inspectorate of the Constabulary

ANNUAL PERFORMANCE REVIEW (APR)

DUMFRIES & GALLOWAY CONSTABULARY

I. BACKGROUND INFORMATION

1. INTRODUCTION - GENERAL

1.1 This is the first Annual Performance Review (APR) of Dumfries & Galloway Constabulary by HMIC following a change in the inspection process.

1.2 The APR examines a range of data gathered by the force which reflects aspects of performance over a period of time. A number of other key indicators are included covering policy and resource areas. This first document is not a comprehensive report of the force's results but it will be developed each year in collaboration with the force.

1.3 HMIC presents this material in a variety of ways, including trends, comparisons and observations.

1.4 For the most part direct comparison between forces in Scotland has significant limitations, principally because of the many differences between the forces. Factors such as population density, geography, numbers of employees, extent and nature of demand, combine to make simple comparison unrealistic. A "league table" approach at a force level has little value. In ensuing years some comparisons at a lower level (divisional and departmental) will be undertaken as this is likely to be much more informative and useful.

1.5 HMIC is looking for evidence of continuous improvement, normally measured by comparing the force's current performance against its own past record. In some instances benchmarking between forces or with other organisations will be appropriate. Where appropriate adoption of good practice from others can be a key factor in developing improvement.

1.6 This performance review is designed to be complementary to the Primary and Review Inspections which constitute the major part of the revised inspection regime. In time, HMIC anticipates this Annual Performance Review could be incorporated into the HMIC Annual Report.

1.7 HMIC appreciates that all forces presently gather and publish a range of data about their performance. Some data are part of the Public Performance monitoring documents, other information is given in the Chief Constable's Annual Report (often with supporting documentation) or it can be found in Scottish Executive publications.

1.8 HMIC will continue to work with forces to identify a methodology for gathering and presenting data that meets the requirements of the forces and HMIC while reducing the bureaucratic and administrative burden. Development within Scottish Police Information Strategy (SPIS) is the likely vehicle for this step forward.

2. THE REPORT

2.1 This report is sent to

2.1.1 The Minister for Justice;

2.1.2 The Dumfries & Galloway Police Authority; and

2.1.3 The Chief Constable of Dumfries & Galloway.

2.2 HMIC invites the Chief Constable to table the report at the next Police Authority meeting as part of the public agenda.

2.3 Post the meeting at 2.2 a press release will be made by HMIC advising that this report is published on the Internet at www.scotland.gov.uk/hmic.

3. THE FORMAT

3.1 The current report is structured around a number of key indicators of performance likely to be of interest and value to the public. HMIC will generally take a 5 year view where

that is meaningful and the data is available. Trends rather than year on year comparison will be offered.

3.2 Where appropriate HMIC anticipates that the force will have set a standard against which its performance can be judged. There may be targets for reaching the standard and these should be challenging but realistic. The purpose must be to seek improvement or maintain a standard which it is deemed acceptable. Where performance drops then an explanation should be possible by the force.

3.3 This first document will be developed and expanded. It will assist in focussing a force's achievements and act as a public pointer as to where some improvement is needed. A particular area for development is to include more specific information about performance against the objectives set by a force in response to the priorities identified following consultation with the communities they serve. In the first instance this is likely to be at the force level but divisional and some departmental performance may be possible later.

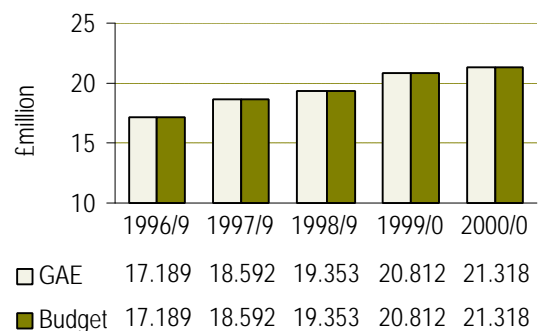
3.4 A key point will be to avoid adding to the present administrative demands on forces for information but to work with forces to establish methods for the electronic transfer of the relevant data on a routine basis.

4. THE PERFORMANCE INFORMATION

4.1 FORCE FUNDING

- For each of the five financial years shown here, Dumfries & Galloway Police Authority has set its budget at Grant-Aided Expenditure (GAE) level.
- The figure for 2000/01 represents a +12.3% increase on the previous four year average.
- Dumfries & Galloway's share of Scottish GAE has risen only slightly, from 2.8% in 1996/97 to 2.9% in 1999/00.

FIG 1: FORCE BUDGET & GAE



4.2 PERSONNEL

STRENGTH IN FORCE

- The strength in force of Dumfries & Galloway Constabulary stands at 681 members of police and support staff. This represents an increase of +7% on the average of the previous three years.
- Both police officers and support staff have contributed to this increase, having risen on the previous three year average by +5.7% and +9.6% respectively.
- The proportion of support staff has grown over the last four years examined here, and currently stands at over one third of all personnel currently in force.
- The main area of growth for police officers has been amongst female officers – yearly increases have resulted in a rise of +16% on the previous three year average – pushing up their share to over 18% of in-force officer strength.
- Despite a slight fall in 1999/00 in the number of additional officers, of the eight Scottish forces Dumfries & Galloway still has one of the highest proportions of such officers.
- For support staff, the number of technical personnel has fallen by nearly -30% on the previous three year average, but this has been offset by a rise of over +43% in the number of clerical personnel. As a result, the proportion of support staff holding clerical positions has risen from 50% in 1996/97 to over 85% in 1999/00.
- All 1.6% of those officers currently working part time are female, while all but one member of part time support staff are female.
- Within the last year, one police officer from the minority ethnic community has been recruited.
- Within the force as a whole ie. male and female officers combined, constables account for around 76%, sergeants 16% and inspectors approximately 4.5%. The proportion of superintendents rose to 1.4% in 1997/98, but since then has fallen back to 1.1%.
- Of all female officers in Dumfries & Galloway Constabulary, 94% are of constable rank. This compares with 73% of males of the same rank.
- Over the four years examined here there have been no female officers above inspector rank.

FIG 2: D&G CONSTABULARY - STRENGTH IN FORCE

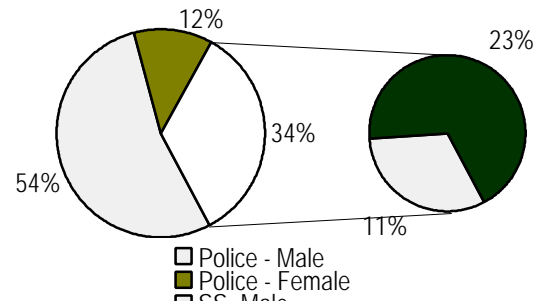


TABLE 1: BREAKDOWN OF STAFF

	DUMFRIES & GALLOWAY				SCOTLAND
	1996/7	1997/8	1998/9	1999/00	1999/00
Total Force	589	658	663	681	20081
No. of Police Officers	411	432	429	448	14624
... per 100,000 pop.	278	293	291	305	286
... % female	15.3	16.9	17.7	18.3	15.8
... % part time	1.0	1.2	0.9	1.6	1.3
... % additional*	2.7	7.2	7.2	6.0	0.7
... % ethnic min.	0.0	0.0	0.0	0.2	0.5
No. of Support Staff	178	226	234	233	5457
... as % of total force	30.2	34.3	35.3	34.2	27.2
... % female	70.8	65.5	67.5	68.2	65.3
... % part time	20.8	15.5	17.1	21.0	11.3
... % ethnic minority	-	0.0	0.0	0.0	0.6
... % traffic warden	6.2	4.9	4.7	4.3	5.9
... % technical	25.8	7.5	7.7	8.2	27.2
... % clerical	50.0	71.7	70.9	85.4	58.9
... % cadets	0.0	1.8	1.7	0.4	0.2
... % dom/cleaners	18.0	14.2	15.0	1.7	7.9

* additional = officers based in ports, airports and oil-related industries, whose costs are not borne entirely by the local authority

FIG 3: BREAKDOWN BY RANK

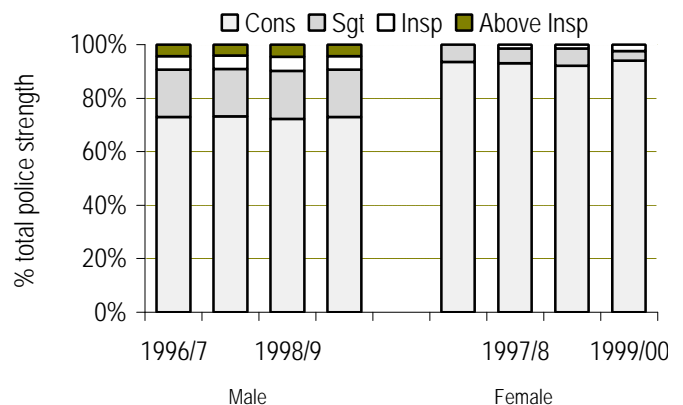


TABLE 2: RECRUITMENT

	DUMFRIES & GALLOWAY				SCOTLAND
	1996/7	1997/8	1998/9	1999/00	1999/00
Police – Male					
Total recruitment	24	27	14	13	344
Applications per post	13.6	6.7	6.9	10.2	8.6
Police – Female					
Total recruitment	25	12	6	8	140
Applications per post	4.7	5.2	4.8	4.9	7.8
Average age (years)	24	25	M=34 F=24	25	-
Support – Male					
Total recruitment	4	19	9	10	158
Applications per post	99.3	19.4	31	36.0	30.5
Support – Female					
Total recruitment	7	17	30	23	335
Applications per post	57.9	28.4	15.2	28.4	20.7

FIG 4: STAFF WASTAGE

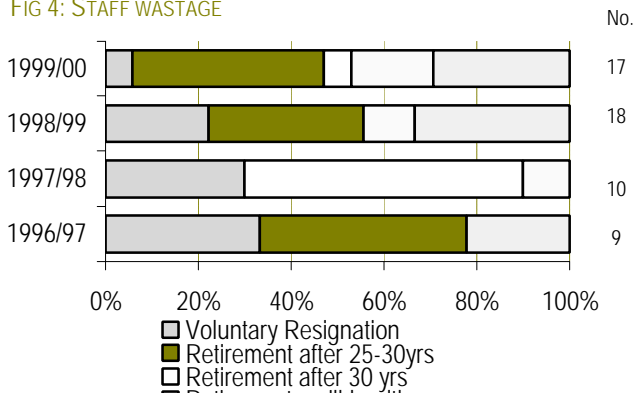


TABLE 3: STAFF ABSENCES

	DUMFRIES & GALLOWAY				SCOTLAND
	1996/7	1997/8	1998/9	1999/00	1999/00
Per police officer					
Absences of sick leave	1.1	1.0	1.1	1.1	1.4
.. self-certificated	1.0	0.9	0.9	0.9	1.0
.. >28 days	0.04	0.04	0.1	0.1	0.1
Working days lost	4.7	7.8	6.3	7.6	11.6
.. self-certificated	2.0	4.0	2.1	2.3	2.7
.. >28 days	1.5	2.4	2.7	3.6	7.4
Maternity / paternity	0.8	1.9	2.2	1.1	1.0
Days lost - assault	0.1	0.2	0.1	0.02	0.3
Per member of SS					
Absences of sick leave	1.2	1.2	1.4	1.5	1.7
.. self-certificated	1.1	1.1	1.1	1.3	1.3
.. >28 days	0.1	0.0	0.1	0.1	0.1
Working days lost	7.7	9.4	8.8	7.8	12.0
.. self-certificated	2.3	7.1	3.0	3.1	3.5
.. > 28 days	3.8	1.7	7.2	3.4	6.3
Maternity / paternity	1.9	5.5	2.7	2.7	2.7
Days lost - assault	0.0	0.0	0.0	0.0	0.1

- The total number of police officers recruited in 1999/00 has fallen by nearly -42% on the previous three year average. With that, there has been a reduction of almost -37% in the number of individuals applying for these posts.
- There remains some disparity between the proportion applicants and the proportion of those then recruited, who are female. For example, in 1996/97 just over one quarter of officer applicants were female, compared with just over one half of all those who were recruited. For 1999/00 the respective proportions are 23% and 38%.
- With regard to support staff, here the number recruited has risen by +15% and the number of applicants, by +27%.
- The proportion of applicants who are female has increased annually, from 50% in 1996/97 to 64.5% in 1999/00. For the latest year, just under 70% of those recruited were female.
- Bearing in mind the small numbers involved, staff wastage for 1999/00 was up +38% on the previous three year average.
- Full service retirement, irrespective of length of service ,remains the most common single grounds for wastage.
- The proportion of those leaving on the grounds of voluntary resignation has clearly dropped, while that for ill-health retirements has grown – but again the actual numbers involved are very small.
- Absences of sick leave per officer have fluctuated very little over this four-year time period. What change there has been has involved an increase in the number of absences of sick leave of over 28 days in duration, but even so this figure remains similar to that for the Scottish forces as a whole.
- Working days lost per officer have, however, been on the rise. In particular, periods of over 28 days have increased with each year examined – having more than doubled between 1996/97 and 1999/00.
- Days lost through assault have reached a recent low of 0.02 days per officer.
- Amongst support staff, absences of sick leave have been increasing, particularly in the latest year for self-certificated periods of absence.
- Since 1997/98 working days lost per support staff member have been falling. However this belies some somewhat erratic patterns for self-certificated days and periods of 28 days lost.
- On the whole, staff absences for D&G compare favourably with Scottish forces as a whole.

4.3 COMPLAINTS AGAINST THE FORCE

TABLE 4: COMPLAINT CASES

	DUMFRIES & GALLOWAY				SCOTLAND
	1996/7	1997/8	1998/9	1999/00	1999/00
a) Outstanding from previous year	10	8	8	10	744
b) Received during year	29	23	24	27	1440
c) Disposed during year	30	23	22	30	1437
Total for year (a+b)	39	31	32	37	2184
→ Disposal rate	76.9%	74.2%	68.8%	81.1%	65.8%
Referral to Proc. Fiscal As a percentage of c)	18 60.0%	17 73.9%	19 86.4%	24 80.0%	924 64.3%

FIG 5: TIME TAKEN TO PROCESS CASES

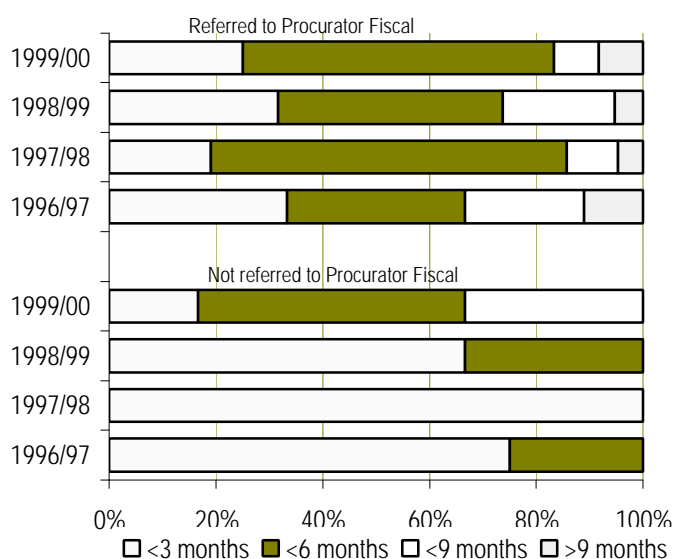


TABLE 5: COMPLAINT ALLEGATIONS DISPOSED

	DUMFRIES & GALLOWAY									SCOTLAND		
	1996/97		1997/98		1998/99		1999/00			1999/00		Year vs previous 3 yr average
	No.	% subst-antiated	No.	% subst-antiated	No.	% subst-antiated	No.	% subst-antiated	Year vs previous 3 yr average	No.	% subst-antiated	Year vs previous 3 yr average
Assault	16	0.0	15	0.0	15	0.0	19	0.0	+23.9	898	0.9	-1.8
Incivility	3	66.7	3	0.0	5	0.0	3	0.0	-18.2	238	8.8	-9.4
Neglect of duty	1	100.0	1	0.0	0	0.0	1	100.0	+50.0	266	33.8	+31.0
Irregularity in procedure	4	0.0	6	0.0	7	14.3	2	50.0	-64.7	305	13.8	+12.3
Traffic irregularity	0	-	0	-	1	0.0	0	-	-100.0	20	5.0	+100.0
Oppressive conduct / harassment	4	0.0	2	0.0	6	0.0	2	0.0	-50.0	235	10.2	+26.6
Unlawful / unnecessary detention	2	0.0	1	0.0	0	-	0	-	-100.0	103	1.0	-26.6
Racially discriminatory behaviour	0	-	0	-	0	-	0	-	-	19	0.0	+50.0
Corrupt practice	0	-	1	0.0	2	0.0	1	0.0	-	24	20.8	+80.0
Other crime	0	-	5	0.0	3	0.0	2	0.0	-25.0	110	7.3	+17.9
Other	0	-	2	0.0	0	-	2	0.0	+200.0	43	25.6	-12.2
Total	30	10.0 (n=3)	36	0.0 (n=0)	39	2.6 (n=1)	32	6.25 (n=2)	-8.6	2261	9.3	+4.9

- The number of complaint cases received during the year 1999/00 is up +6.6% on the previous three year average.
- The percentage of cases (those outstanding from the previous year and those received during the current year) subsequently disposed, had been falling but is now showing substantial improvement.
- The proportion of cases referred to the Procurator Fiscal had been rising, but in the latest year has fallen back slightly to a rate of eight in every ten cases.
- In spite of a +24% increase in the number of cases referred to the Procurator Fiscal in 1999/00, the proportion of referrals processed within six months has remained fairly high.
- With comparatively low numbers of cases not referred to the Procurator Fiscal, it is not surprising that the rate at which these cases are processed remains high, despite some slippage in 1999/00 when one third (ie. two cases) were dealt with within six to nine months.
- The total number of complaint allegations disposed during 1999/00 is down -8.6% on the previous three year average.
- Although there appears to be a noticeable degree of change over the four years in the proportions of allegations found to be substantiated, the actual numbers involved are extremely small.
- Allegations of assault continue to be the most common category of complaint – accounting for just under 64% of all complaints in 1999/00 – whereas allegations of irregularity in procedure and oppressive conduct / harassment have declined over this time period.
- Though not shown here, there have been no instances during the four years examined, in which a complaint allegation was 'resolved' (either by conciliation or explanation to the complainer).
- The percentage of allegations found to be unsubstantiated rose by +19 percentage points between 1996/97 and 1998/99 to reach 92.3%, but has since fallen back to 84.4% in the latest year.

4.4 CRIME

TOTAL CRIME (GROUPS 1-5)

- Total recorded crime in 1999/00 for Dumfries & Galloway is down -4.9% on the previous four year average.
- Detection rate has been falling over the last two years, but the current rate of 56% remains high.

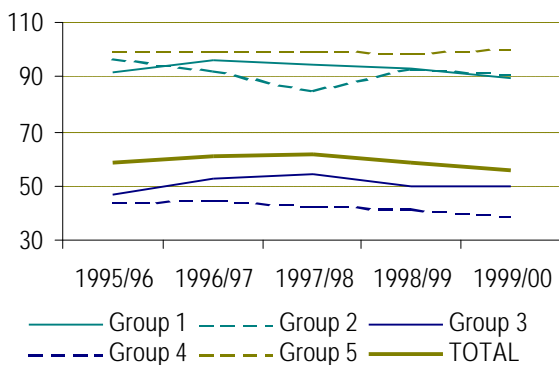
GROUP 1: NON-SEXUAL CRIMES OF VIOLENCE

- Recorded crime in this group has fallen -15.5% on the previous four year average, and at 306 crimes in total this represents the lowest figure recorded for the past ten years.
- Contributing to this decline has been serious assaults (-28%), handling offensive weapons (-9%) and 'other' crimes (-60.5%).
- Indeed the only sub-group to record a rise is robbery, up nearly +42%.
- Overall detection rate has recently dipped just below the 90% mark.

GROUP 2: CRIMES OF INDECENCY

- For this group, recorded crime is up by just over one fifth (+20.9%) on the previous four year average. This is due primarily to a markedly low number of these crimes having been recorded in 1996/97.
- For the same reason, sexual assaults have also recorded a marked rise of almost +44%, with lewd/indecent behaviour up by nearly +10%. 'Other' crimes on the other hand, are down by over one quarter.
- Overall rate of detection has fallen again within the latest year, and currently stands at 91.3%.

FIG 6: DETECTION RATES PER CRIME GROUP



GROUP 3: CRIMES INVOLVING DISHONESTY

- There has been very little change (-0.7%) in terms of number of crimes for this group when 1999/00 is compared with the previous four year average.
- Motor vehicle theft has fallen by -13%, other theft by -1.3% and 'other' crimes by -0.8%.
- On the increase have been shoplifting - up over 12% on the previous four year average, fraud (+3.2%), theft by OLP (+2.4%) and housebreaking (+1.0%).
- Rates of detection have slipped for all sub-groups, resulting in a current overall detection rate of just under one in every two crimes (49.9%).

GROUP 4: FIRE-RAISING, MALICIOUS & RECKLESS CONDUCT

- For 1999/00 reports of group four crimes rose +5.7% on the previous four year average. With a 98% share of crimes in this group, vandalism etc. is the main driver behind this increase, up +5.9%.
- Crimes of fire-raising on the other hand, have experienced a drop of -6%.
- Overall rate of detection has been falling since 1996/97, and is currently standing at a recent low of 39.1%.

GROUP 5: OTHER CRIMES

- Because of a change in the recording of bail offences 1999/00 saw a -30.2% reduction in overall reported crime in this group. If crimes of re-offending while on bail are removed altogether, the fall on the previous four year average for all crimes in this group becomes -24.2%.
- Similarly, crimes against public justice when re-offending on bail is included shows a -35.5% drop, and becomes -21.5% when excluded.
- Drug-related crime has also fallen - down -25.5% on the previous four year average, perhaps as a result of the force's focus on major drug dealers.

FIG 7: INDEX OF RECORDED CRIME PER GROUP (1995/96 = 100)

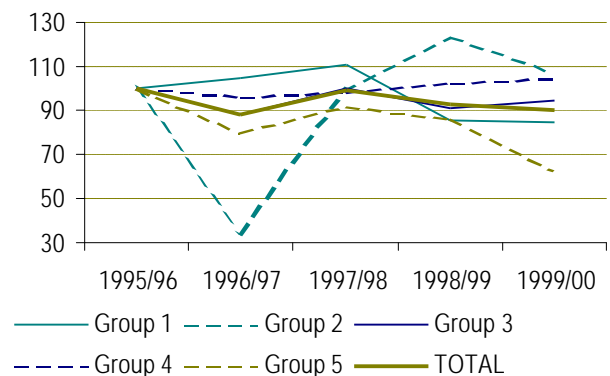


FIG 8: TOTAL CRIME – NUMBER RECORDED AND % DETECTED

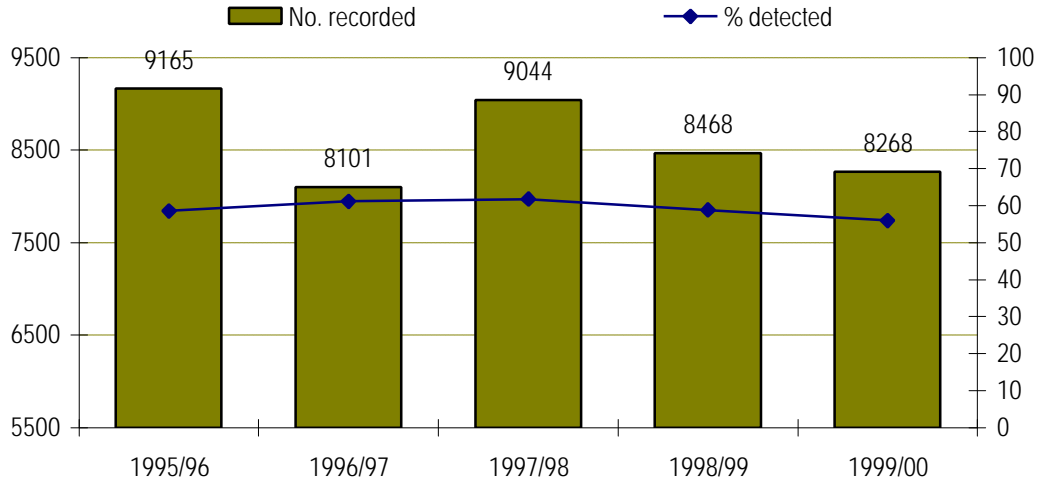
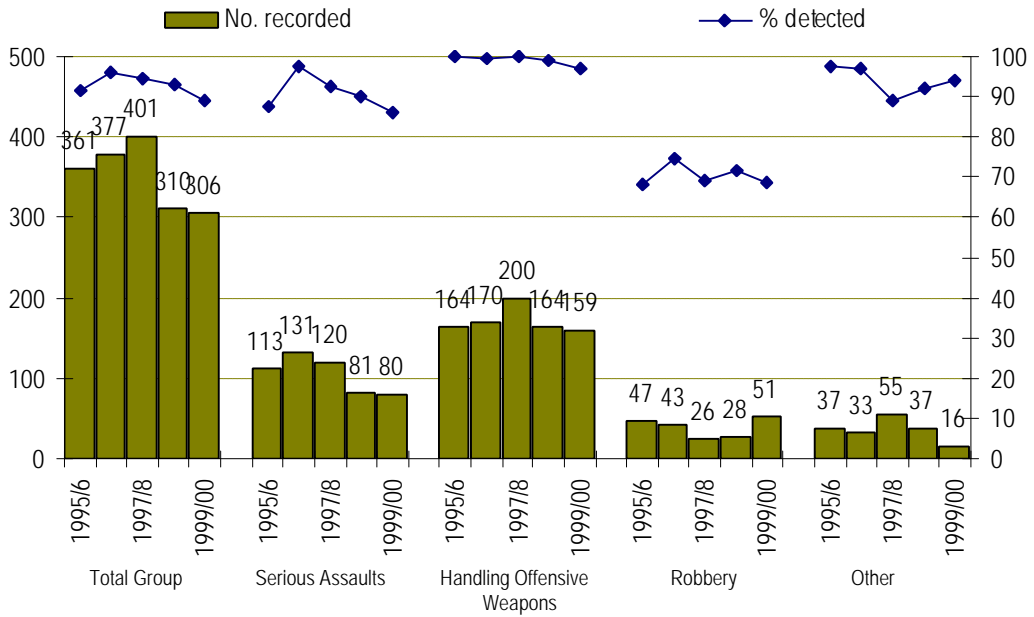


FIG 9: GROUP 1 CRIME – NUMBER RECORDED AND % DETECTED



(Serious assaults = murder, attempted murder, culpable homicide, death through drink/drug driving and serious assaults)

FIG 10: GROUP 2 CRIME – NUMBER RECORDED AND % DETECTED

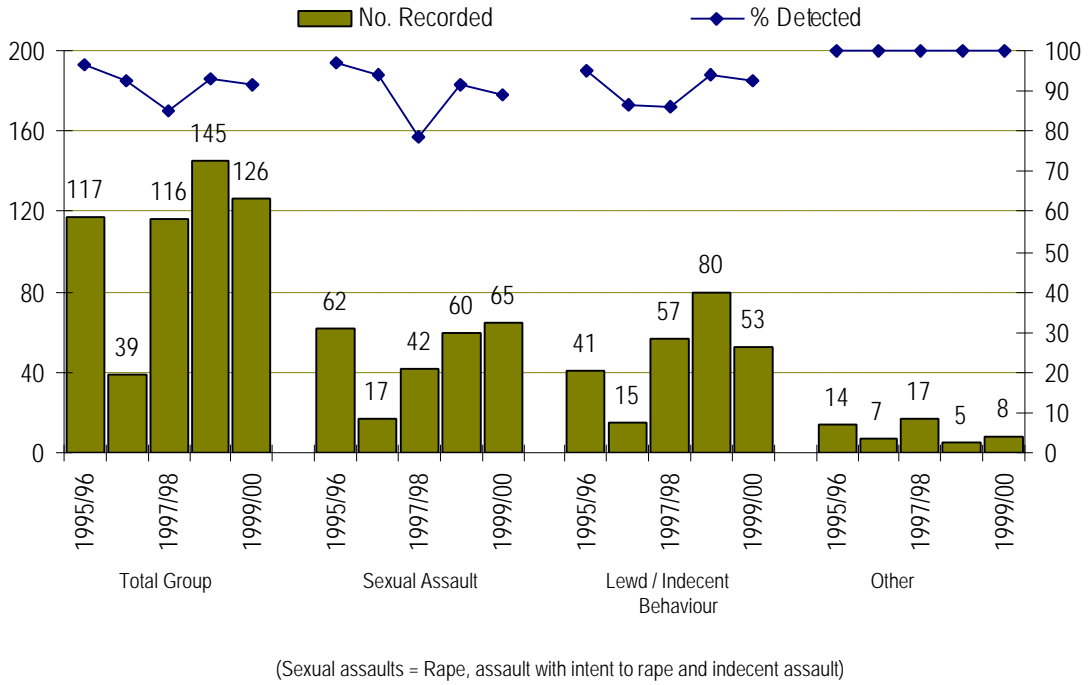


FIG 11: GROUP 3 CRIME – NUMBER RECORDED AND % DETECTED

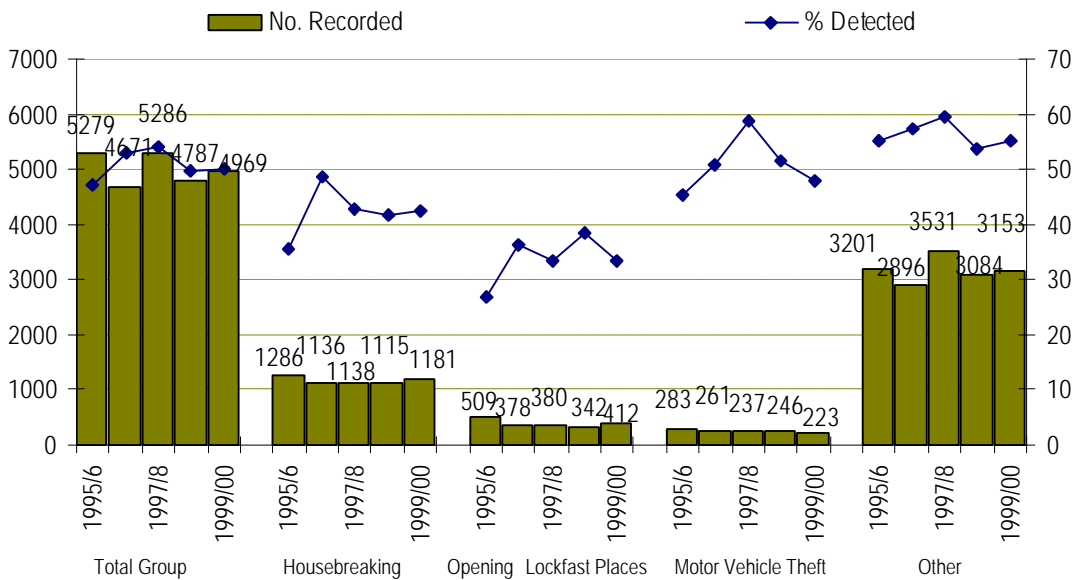


FIG 12: GROUP 4 CRIME – NUMBER RECORDED AND % DETECTED

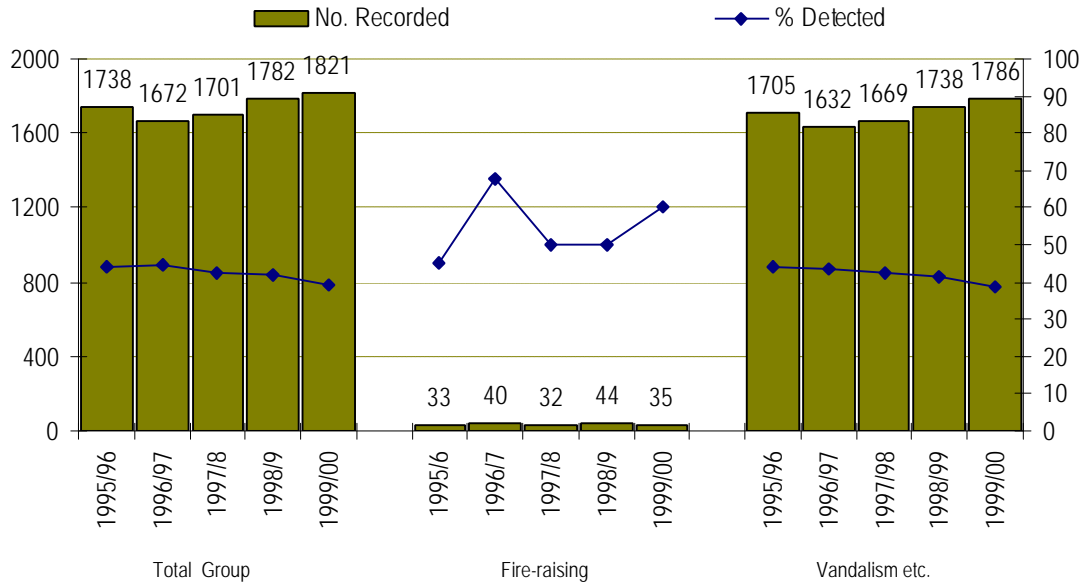
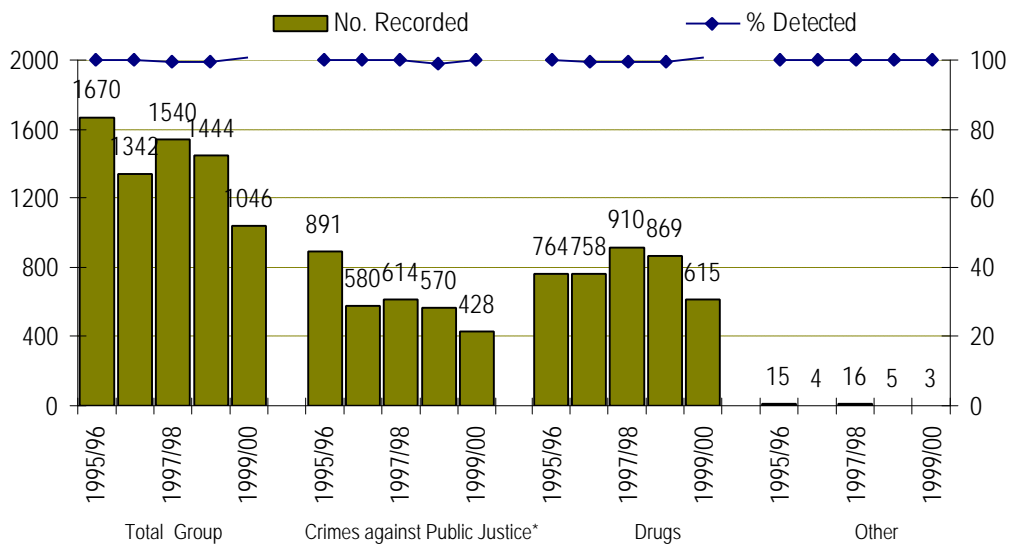


FIG 13: GROUP 5 CRIME – NUMBER RECORDED AND % DETECTED



(* crimes against public justice include eg. resisting arrest, impersonation of a police officer, perjury and crimes of public nuisance etc)

4.5 OTHER PERFORMANCE INDICATORS

FIG 14: CRIME DETECTION RATE

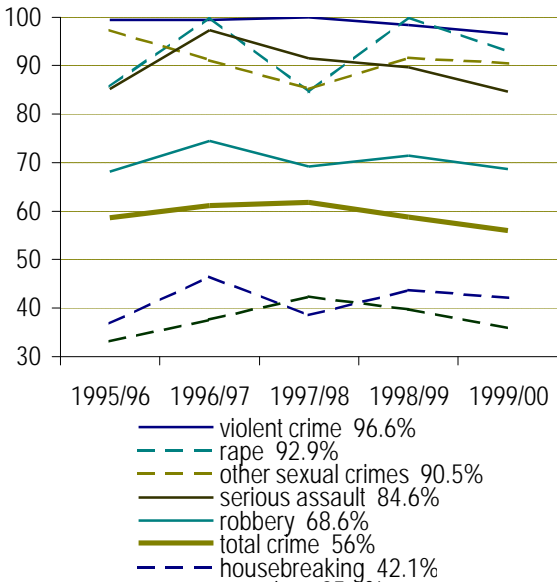


FIG 15: NON-MOTOR VEHICLE OFFENCES

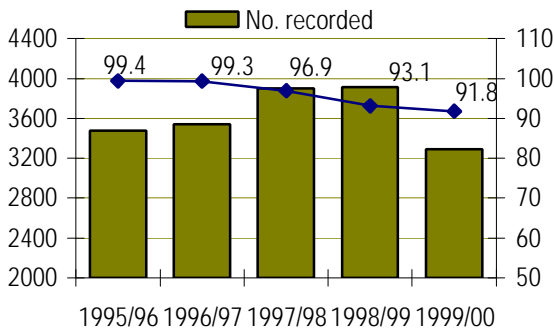
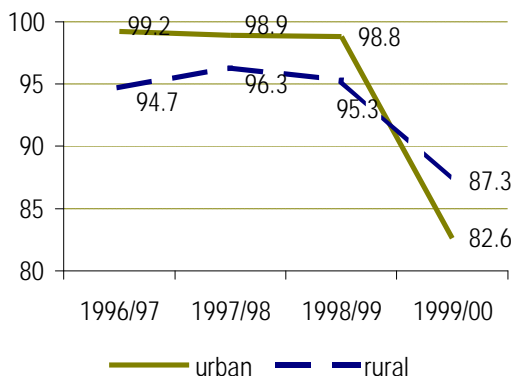


FIG 16: RESPONSE TIMES TO IDENTIFIED EMERGENCY CALLS



- In the absence of specific details on D&G's targets in relation to these Best Value indicators, this chart provides an overview of detection rates for the specified categories of crime over the last five years. The percentages below the figure show detection rates for 1999/00.
- What is clear is that detection rates for each of these categories has slipped over the last two years or so. For crimes of rape, robbery and car crime, this slippage has been accompanied by a rise, compared with the previous four year average, in the number of crimes recorded.
- For all other indicators shown here, 1999/00 shows falls in both number of crimes recorded and detection rate. Having said that, as mentioned elsewhere in this report, a 56% detection rate for total crime remains high.
- In 1999/00 non-motor vehicle offences fell -11.3% on the previous four year average. Prior to that time the number of these offences recorded had been rising.
- Accounting for just over half of all offences in this group, recorded offences of breach of the peace show a similar pattern over these five years - rising until 1998/99 and then falling back in the latest year. In 1999/00 these offences were down -6.2% on the previous four year average.
- A further two fifths of offences in this group consist of offences of petty assault. Comparing 1999/00 with the previous four year average shows little change (+0.4%)
- The chart to the left also shows overall detection rate falling annually - from 99.4% in 1995/96 to 91.8% in 1999/00.
- Detection rates for both breach of the peace and petty assaults have also fallen each year: the former by -4.8 percentage points over the five years to stand at 95%, the latter by -11.7 percentage points to stand at 87%.
- The target time for responses to identified emergency calls is currently set at seven minutes for urban locations and 17 minutes for rural locations. Prior to 1998/99 however, the targets were ten and 20 minutes respectively.
- This figure shows the percentage achieved within target for both urban and rural calls to have decreased quite dramatically. In the absence of data showing the actual number of in-coming calls it is unclear whether this has been the result of either an increase in the number of calls received or the change in target time. To compound the picture, equipment failure in the first quarter of 2000 led to an estimated 800 additional calls being lost.
- Responses to 999 calls have not been shown here as Dumfries & Galloway had set no targets for this indicator prior to 1998/99. For 1999/00 however, the target was set at 90%, and was exceeded by 3%.

TABLE 6: RACIST INCIDENTS

	1996/7	1997/8	1998/9	1999/00
No. of racist incidents	4	4	1	24
Per 100 EM population	0.8	0.8	0.2	4.5
Suspects identified, reported or arrested	-	-	-	7
Number of victims:	0	0	0	0
Explosives/arson	1	2	0	2
Assaults				

FIG 17: BREAKDOWN OF RACIST INCIDENTS

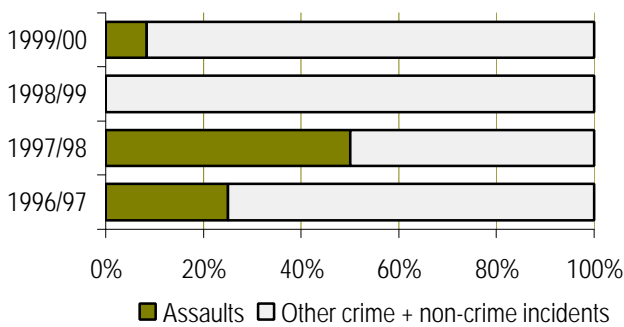
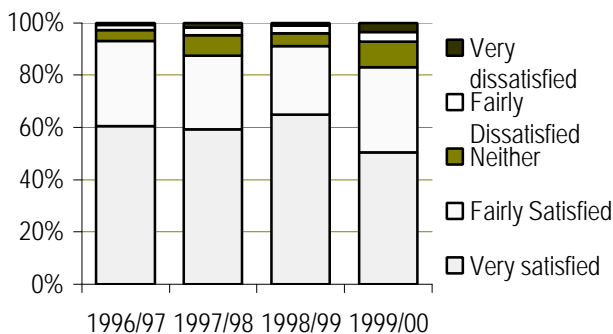


TABLE 7: COMPLAINTS PER 100 OFFICERS

	D&G				SCOTLAND
	1996/7	1997/8	1998/9	1999/00	1999/00
No. of officers in force	411	432	429	448	14624
No. of complaint cases received during year	29	23	24	27	1440
Complaints per 100 officers	7.1	5.3	5.6	6.0	9.8

FIG 18: PUBLIC SATISFACTION SURVEY



- As a consequence of the Stephen Lawrence inquiry and the resulting MacPherson report, a number of recommendations for police forces were identified in the ACPOS Racial Diversity Strategy. Within the more general aim of improving relations between the police and ethnic minority communities was a redefinition of a racist incident as 'any incident which is perceived to be racist by the victim or any other person'
- Perhaps as a result of such measures, reports of these incidents have risen dramatically – 1999/00 saw an eightfold increase on the previous three year average.
- The ethnic minority population figures are taken from the 1991 census. Care should therefore be taken when drawing conclusions from the incidents per 100 EM population data.
- It is extremely difficult to extract any meaningful comments from this figure showing type of racist incident, as the numbers dealt with prior to 1999/00 are so small.
- Further details relating to incident type are available for 1999/00. In this latest year, offences of breach of the peace accounted for two thirds of all incidents and 73% of all other crime and non-crime incidents.
- Incidents of vandalism account for the remaining 27% of other crime and non-crime incidents, and for one quarter of total racist incidents.
- Complaints against the force have been discussed in greater detail elsewhere. The table attached, showing complaints in terms of the specified performance indicator ie. per 100 police officers in force, shows these to be increasing since 1997/98. However the latest figure remains lower than that recorded for 1996/97.
- Finally in this section the results of surveys of public satisfaction with Dumfries & Galloway police force are shown.
- The proportion of respondents claiming to be very satisfied with the force fell to just over half (50.4%) in 1999/00. This in turn has reduced the proportion of all respondents expressing any level of satisfaction to a recent low of 83% - nevertheless this remains a high proportion.
- Not all of this reduction has been offset by an increase in dissatisfied respondents however. The proportion of those claiming to be neither satisfied nor dissatisfied has grown to stand just short of 10% in 1999/00.
- Thus the proportion of those expressing dissatisfaction has increased by 4.6 percentage points to stand at just over 7%.

4.6 MOTOR VEHICLE OFFENCES & COLLISIONS

- Until 1998/99 offences relating to motor vehicles had been rising more or less each year. However the drop in recorded offences for the latest year means that compared with the previous four year average, the total for 1999/00 represents just a +1% increase.
- Due to the nature of these offences, detection rate will inevitably be high, and for Dumfries & Galloway this has remained at 100% for the past five years.
- Targets of road safety initiatives undertaken by D&G police force during 1999/00 included drink driving, excise evasion, speeding, disqualified driving and document offences. Nevertheless recorded offences of speeding fell in 1999/00, due to a clarification of legal procedures in relation to the use of equipment by the Camera Enforcement Unit.
- Compared with the previous four year average, 1999/00 saw reckless driving fall by just over –28%, drink/drug-related offences by –21% and vehicle excise offences by –22%. While speeding within built-up areas also fell – by –6%, other speeding rose by nearly +18%.
- The total number of road collisions occurring in Dumfries & Galloway in 1999/00 was down –3.2% on the previous four year average.
- Within total collisions, the percentage incurring casualties has alternated between 22% and 24%, with each year.
- Though no information is provided on seriousness of injuries, the proportion of fatalities fell to a recent low of 1.3% in 1999/00. Compared with the previous four years this represents a threefold reduction in the actual number of deaths.
- This final figure shows trends in road collisions and casualties over the last five years, when indexed on 1995/96.
- Although the actual number of fatalities remains low, the reduction achieved is nevertheless impressive and has resulted in a recent low of eight deaths.

FIG 19: OFFENCES RELATING TO MOTOR VEHICLES

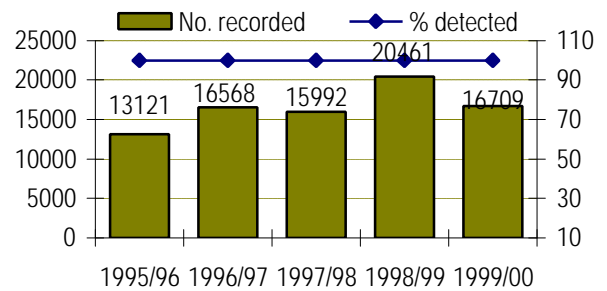


FIG 20: MOTOR VEHICLE OFFENCES (INDEXED ON 1995/96 = 100)

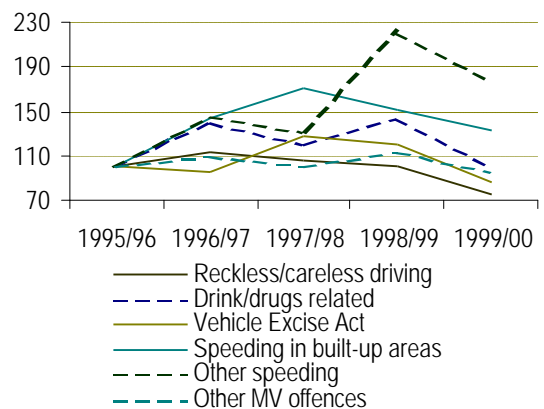


TABLE 8: ROAD TRAFFIC COLLISIONS & CASUALTIES

	1995/6	1996/7	1997/8	1998/9	1999/00
Total collisions	1864	1717	1695	1842	1722
% collisions with casualties	21.6	23.8	21.6	23.8	21.9
Total killed / injured	569	601	628	620	599
% Fatalities	4.4	5.5	2.9	3.1	1.3
% Injuries	95.6	94.5	97.1	96.9	98.7

FIG 21: ROAD COLLISIONS/CASUALTIES (INDEX 1995/96 = 100)

