



Statistics Publication Notice

Education Series

ISSN 1479-7569
ISBN 0 7559 6250 8

SQA EXAMINATION RESULTS IN SCOTTISH SCHOOLS: 2005/06

20 September 2006

A Scottish Executive National Statistics Publication

This document is also available in pdf format <http://www.scotland.gov.uk/stats/bulletins/00527>.

This Statistics Publication Notice presents national and education authority level information on the cumulative attainment of National Qualifications by all pupils in publicly funded secondary schools. It updates Statistics Publication Notice "SQA Examination Results in Scottish Schools: 2004/05" published on 27 September 2005.

The Scottish Credit and Qualifications Framework (SCQF) is used as the basis for reporting attainment. The SCQF levels are shown below for information.

Scottish Credit and Qualifications Framework	
Level	Qualifications included
7	Advanced Higher @ A-C CSYS @ A-C
6	Higher @ A-C
5	Standard Grade @ 1-2 Intermediate 2 @ A-C
4	Standard Grade @ 3-4 Intermediate 1 @ A-C
3	Standard Grade @ 5-6 Access 3 Cluster

Any attainment below SCQF level 3 is not reported on in this publication.

The main findings are:

- Overall attainment in Scottish schools in 2005/06 was broadly similar to the levels attained in previous years. The figures are not directly comparable because the 2005/06 figures are before appeals whereas figures for previous years include successful appeals.
- A higher proportion of females than males achieved awards at all SCQF levels, by the end of all stages. In S5 and S6, this is partly due to higher staying on rates for females than males.

- In 2005/06:
 - Ninety-one per cent of pupils gained awards in both English and Maths at SCQF level 3 (e.g. Standard Grade Foundation) or better by the end of S4. Thirty-four per cent attained five or more awards at SCQF level 5 (e.g. Standard Grade Credit) or better by the end of S4. (Table 2)
 - By the end of S5, 21 per cent of the previous year's S4 year group attained three or more awards at SCQF level 6 (Higher) or better. (Table 3)
 - By the end of S6, 19 per cent of the S4 year group from two years previously attained five or more awards at SCQF level 6 (Higher) or better. Twelve per cent obtained at least one award at SCQF level 7 (Advanced Higher). (Table 4)
- Accumulation of awards over time:
 - Of the S4 year group in 2003/04, 35 per cent gained five or more awards at SCQF level 5 (e.g. Standard Grade Credit) or better by the end of that year. By the end of S5 (2004/05), another ten per cent of the same year group achieved this level and a further three per cent by the end of S6 (2005/06), resulting in a total of 48 per cent. (Table 5)
 - By the end of S5, ten per cent of the S4 year group in 2003/04 achieved five or more awards at SCQF level 6 (Higher) or better. A further nine per cent of this year group gained awards at this level by the end of S6. (Table 5)

The following tables are available:

Table 1 *S4 roll by year and gender*

Table 2 *S4 Attainment*

Table 3 *S5 Attainment*

Table 4 *S6 Attainment*

Table 5 *Attainment of the pupils who were in S4 in 2003/04, by the end of each stage*

Table 6 *S4 Attainment, by education authority*

Table 7 *S5 Attainment, by education authority*

Table 8 *S6 Attainment, by education authority*

The following charts are available:

Chart 1 *S4 Attainment*

Chart 2 *S5 Attainment*

Chart 3 *S6 Attainment*

BACKGROUND NOTES

1. National Statistics Statement

This is a National Statistics publication. National Statistics are produced to high professional standards set out in the National Statistics Code of Practice. They undergo regular quality

assurance reviews to ensure that they meet customer needs. They are produced free from any political interference.

2. Sources and Definitions

2.1 Sources

Data on National Qualifications were obtained from the Scottish Qualifications Authority (SQA). They do not take into account confirmed corrections to certification post August 2006.

School roll figures were obtained from the Scottish Executive School Census as at September in the relevant year. Pupils entering or leaving the school after Census date may affect the percentages given for examination attainment. Roll figures include pupils in mainstream classes and in integrated SEN units.

Candidate Stage data (i.e. S4, S5, S6) was obtained, for the majority, from schools' management information systems. Stage was otherwise estimated to within approximately 0.5% chance of error.

2.2 Definitions

National and education authority averages do not include independent or special schools. Education authority averages include education authority secondary schools only, whereas national averages include all publicly funded secondary schools.

The figures represent cumulative attainment by the end of each stage. For example, figures showing attainment by the end of S4 may include the results of Standard Grade or Intermediate courses completed by the same pupils when they were in S3.

From August 2004, candidates were able to achieve a grade D in their national courses. This replaces the 'Compensatory Award' which existed previously, whereby pupils who narrowly failed to pass the external assessment of a national course, but passed all the relevant national units, were awarded a 'compensatory' A at the level of course below the one undertaken. However, whilst a recognition of candidate achievement, the D grade is not a pass award.

These figures only include Standard Grade awards at 1-6. Candidates are awarded a grade dependant on their performance against set criteria and there are 3 levels of award – credit (grades 1&2), general (grades 3&4) and foundation (grades 5&6). A '7' is awarded where a candidate completes/ passes the course but not at a level of performance required to gain one of the other 6 grades.

In order to record the attainment of an entire year group, attainment in S5 and S6 is reported as a percentage of the relevant S4 roll. For example, attainment in S5 in 2005/06 is calculated as a percentage of the S4 roll in September 2004/05. S6 attainment is calculated from the S4 roll in September 2003/04. The roll figures are available in a separate table (table 1).

Awards are credited to the presenting centre only. Exam results may be affected by pupils who are presented for examinations at Further Education colleges.

The S5 staying on rates are calculated as the estimated January roll in S5 divided by the previous year's S4 roll as at September. The estimated January roll in S5 is calculated by subtracting the number of first term leavers in S5 from the September S5 roll. The S6 staying on rate is calculated by dividing the September S6 roll by the S4 roll two years before.

3. Notes

Examination results are an important indicator of performance, but not one that gives the full picture of education. These results should be considered alongside other indicators of pupils' progress, such as the quality of the learning experience and the ethos of the school.

Sometimes differences in the patterns of results from year to year may be due to fluctuations in pupils' abilities in different year groups rather than to any underlying trend in school performance. Furthermore, as already stated, examination results for 2005/06 are pre-appeals whereas results for 2003/04 and 2004/05 are post-appeals. In past years, the post-appeal figures are generally no more than one percentage point higher than the equivalent pre-appeal figure.

Some schools make provision for pupils with special educational needs either within their mainstream roll or in integrated SEN units. These pupils can have a significant effect on attainment patterns. However, the overall effect is heavily dependent on the number of pupils and the nature of their needs.

Staying on rates affect the potential of a year group to gain awards in S5 and S6; therefore, a low staying on rate may be part of the explanation for a low percentage of awards at these stages.

School level information will be published on www.scottishschoolsonline.gov.uk in December. A more detailed analysis of examination results, including trends in post-appeals attainment, will be published around February 2007.

4. Enquiries

Copies of the tables are available on the Scottish Executive's website at www.scotland.gov.uk.

Public enquiries about the information contained in this Statistics Publication Notice should be addressed to:

(non-media) Sara Conroy, Assistant Statistician, The Scottish Executive Education Department, Education Statistics, Area 1-B South, Victoria Quay, Edinburgh EH6 6QQ.
Tel. (0131) 244 4933 or e-mail: educ.outcomes.stats@scotland.gsi.gov.uk

(media) Marion MacKay Tel. (0131) 244 3070.

Attainment by stage and gender: 2003/04, 2004/05, 2005/06

Table 1: S4 roll by year and gender

Year	Total	Male	Female
2001/02	59,998	30,600	29,398
2002/03	61,035	31,065	29,970
2003/04	60,446	30,698	29,748
2004/05	58,871	29,863	29,008
2005/06	61,190	31,112	30,078

Table 2: S4 Attainment

Attainment by the end of S4 is calculated as a percentage of the S4 year group of that same year. See **Table 1: 2003/04-2005/06** for the roll figures which were used as a basis for calculation of the figures in this table.
For graphical illustration see **Chart 1**.

Year	Percentage of the S4 year group achieving:			
	English and Maths at SCQF level 3 (e.g. Standard Grade Foundation) or better	5+ Awards at SCQF level 3 (e.g. Standard Grade Foundation) or better	5+ Awards at SCQF level 4 (e.g. Standard Grade General) or better	5+ Awards at SCQF level 5 (e.g. Standard Grade Credit) or better
2003/04				
Total	91	91	77	35
Male	90	90	73	30
Female	92	92	80	39
2004/05				
Total	90	90	76	34
Male	90	89	73	30
Female	91	91	79	39
2005/06				
Total	91	91	76	34
Male	90	89	74	30
Female	91	92	80	39

Table 3: S5 Attainment

Attainment by the end of S5 is calculated as a percentage of the S4 year group from the previous year. See **Table 1: 2002/03 - 2004/05** for the roll figures which were used as a basis for calculation of the figures in this table.
For graphical illustration see **Chart 2**.

Year	Percentage of the S4 year group staying on to S5 (post Christmas)	Percentage of the S4 year group from the previous year achieving:		
		5+ Awards at SCQF level 5 (e.g. Standard Grade Credit) or better	1+ Awards at SCQF level 6 (Higher) or better	3+ Awards at SCQF level 6 (Higher) or better
2003/04				
Total	64	45	39	23
Male	60	39	34	19
Female	69	51	44	26
2004/05				
Total	64	45	39	23
Male	60	40	35	20
Female	69	51	43	26
2005/06				
Total	64	45	38	21
Male	60	40	34	18
Female	68	49	42	24

Table 4: S6 Attainment

Attainment by the end of S6 is calculated as a percentage of the S4 year group two years previously. See **Table 1: 2001/02 - 2003/04** for the roll figures which were used as a basis for calculation of the figures in this table.
For graphical illustration see **Chart 3**.

Year	Percentage of the S4 year group staying on to S6	Percentage of the S4 year group two years previously achieving:		
		3+ Awards at SCQF level 6 (Higher) or better	5+ Awards at SCQF level 6 (Higher) or better	1+ Awards at SCQF level 7 (Advanced Higher) or better
2003/04				
Total	45	31	20	12
Male	41	27	17	11
Female	49	35	23	14
2004/05				
Total	44	30	19	12
Male	40	26	17	11
Female	49	35	22	14
2005/06				
Total	44	30	19	12
Male	40	26	17	11
Female	48	33	22	13

Note: 2006 figures are pre-appeal. In past years, the post-appeal figures are generally no more than one percentage point higher than the equivalent pre-appeal figure.

Chart 1: S4 attainment

Attainment of all pupils by the end of S4 based on a percentage of the S4 year group of that same year

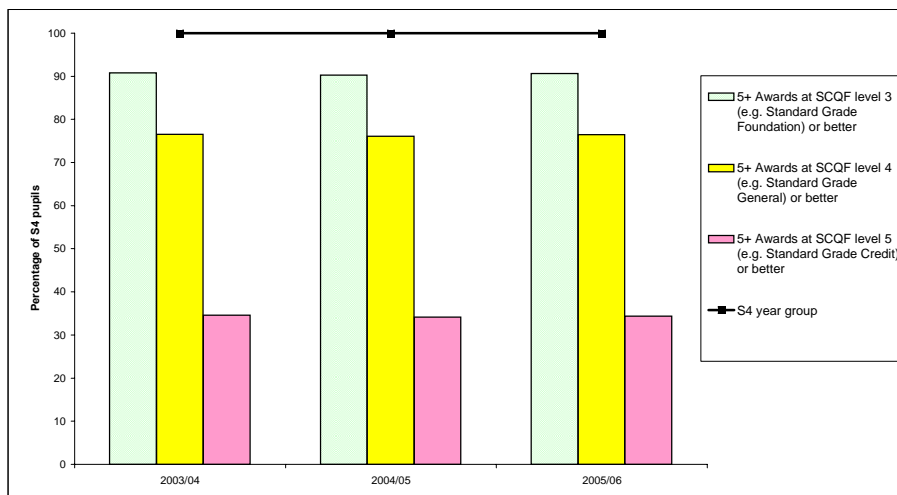


Chart 2: S5 Attainment

Attainment of all pupils by the end of S5 based on a percentage of the S4 year group from the previous year

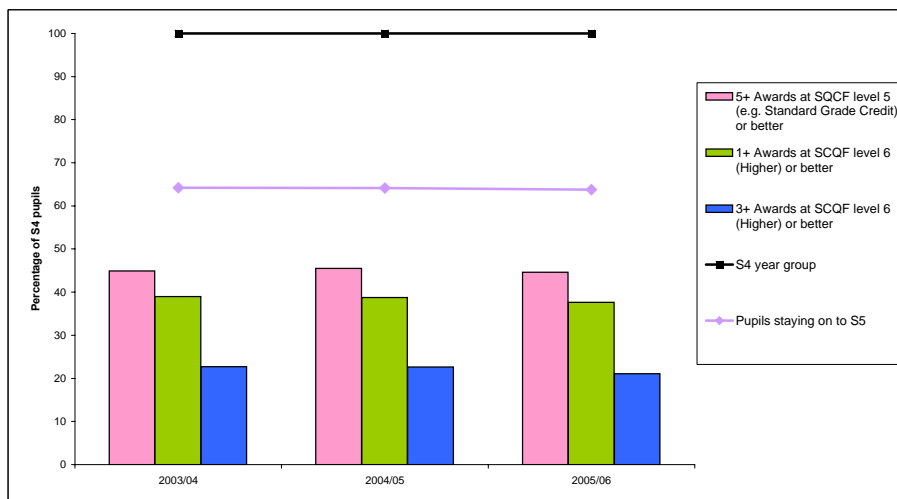
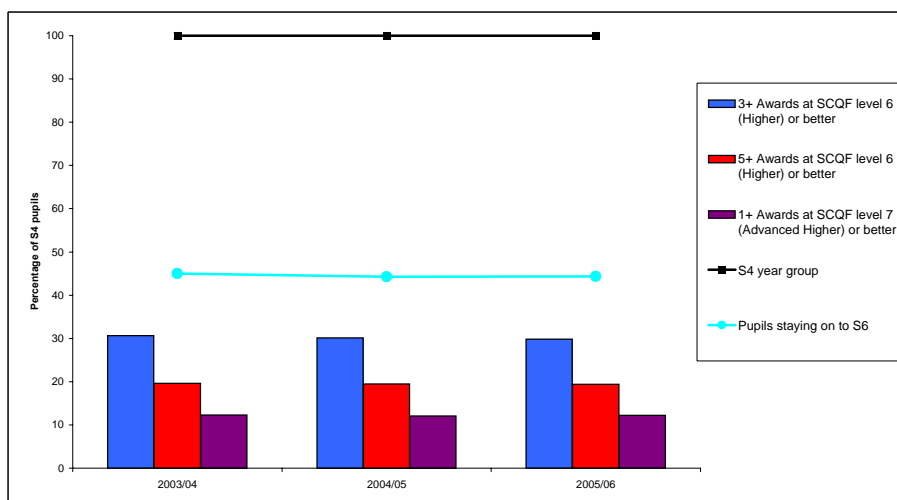


Chart 3: S6 Attainment

Attainment of all pupils by the end of S6 based on a percentage of the S4 year group two years previously



Note: 2006 figures are pre-appeal. In past years, the post-appeal figures are generally no more than one percentage point higher than the equivalent pre-appeal figure.

Cumulative attainment for a single year group

Table 5 allows the academic progression of an entire year group to be seen as they move through the various stages of high school education. Shown below are the achievements of the 60,446 pupils who started S4 in 2003/04 by the end of S4 (2003/04), S5 (2004/05) and S6 (2005/06). Note that not all 60,466 pupils will stay on to S5 and/or S6.

Table 5: Attainment of the pupils who were in S4 in 2003/04, by the end of each stage

Number of pupils in S4 in 2003/04	By end of Stage	Percentage of the S4 year group achieving:							
		English and Maths at SCQF level 3 or better	5+ Awards at SCQF level 3 or better	5+ Awards at SCQF level 4 or better	5+ Awards at SCQF level 5 or better	1+ Awards at SCQF level 6 or better	3+ Awards at SCQF level 6 or better	5+ Awards at SCQF level 6 or better	1+ Awards at SCQF level 7 or better
Total 60,446	S4	91	91	77	35	0	0	0	0
	S5	92	91	78	45	39	23	10	0
	S6	92	91	78	48	43	30	19	12
Male 30,698	S4	90	90	73	30	0	0	0	0
	S5	91	90	75	40	35	20	9	0
	S6	91	90	75	43	39	26	17	11
Female 29,748	S4	92	92	80	39	0	0	0	0
	S5	92	92	82	51	43	26	11	0
	S6	92	93	82	53	47	33	22	13

Notes:

SCQF level 3 = Standard Grade Foundation / Access 3 Cluster Award

SCQF level 4 = Standard Grade General / Intermediate 1

SCQF level 5 = Standard Grade Credit / Intermediate 2

SCQF level 6 = Higher

SCQF level 7 = Advanced Higher

2006 figures are pre-appeal. In past years, the post-appeal figures are generally no more than one percentage point higher than the equivalent pre-appeal figure.

Table 6: S4 Attainment, by education authorityAttainment by the end of S4 is calculated as a percentage of the S4 year group of that same year.

Education Authority	S4 Roll as at September			Percentage of the S4 year group achieving:											
				English and Maths at SCQF level 3 (e.g. Standard Grade Foundation) or better			5+ Awards at SCQF level 3 (e.g. Standard Grade Foundation) or better			5+ Awards at SCQF level 4 (e.g. Standard Grade General) or better			5+ Awards at SCQF level 5 (e.g. Standard Grade Credit) or better		
				2003/04	2004/05	2005/06	2003/04	2004/05	2005/06	2003/04	2004/05	2005/06	2003/04	2004/05	2005/06
Scotland	60,446	58,871	61,190	91	90	91	91	90	91	77	76	76	35	34	34
Aberdeen City	2,105	1,960	2,017	92	93	93	92	91	90	74	77	75	35	34	35
Aberdeenshire	2,993	2,985	3,133	95	95	95	94	94	94	86	86	85	43	44	43
Angus	1,354	1,297	1,416	92	92	88	91	91	89	78	79	76	36	36	33
Argyll & Bute	1,034	1,079	1,057	94	95	94	94	95	94	82	85	80	34	42	37
Clackmannanshire	597	555	576	89	82	90	83	84	88	69	72	70	27	31	27
Dumfries & Galloway	1,884	1,809	1,923	91	91	92	91	91	92	78	77	79	38	35	36
Dundee City	1,697	1,624	1,686	83	84	86	81	81	82	65	63	65	23	22	23
East Ayrshire	1,497	1,554	1,621	91	90	89	90	89	89	77	76	74	32	31	31
East Dunbartonshire	1,691	1,620	1,593	96	97	97	96	96	97	86	86	89	46	48	50
East Lothian	1,058	1,013	1,149	94	94	95	92	92	94	79	78	82	39	40	40
East Renfrewshire	1,390	1,360	1,379	94	91	80	96	97	95	89	91	86	58	59	54
Edinburgh City	3,787	3,723	3,831	90	89	91	89	87	88	74	74	74	35	35	33
Eilean Siar	399	356	371	93	91	94	92	90	93	82	80	83	41	39	47
Falkirk	1,601	1,619	1,789	88	89	82	88	89	88	70	72	73	28	29	31
Fife	4,382	4,244	4,327	91	90	91	91	90	91	77	75	75	33	32	31
Glasgow City	5,541	5,557	5,465	84	82	85	84	83	86	65	63	67	23	21	23
Highland	2,762	2,717	2,843	94	93	93	93	92	92	83	81	80	40	38	38
Inverclyde	1,031	1,053	1,059	92	92	92	93	95	94	80	78	79	36	33	32
Midlothian	1,118	1,015	1,107	91	91	93	90	89	91	76	75	78	30	31	30
Moray	1,172	1,100	1,132	92	94	93	92	93	92	84	80	80	34	34	36
North Ayrshire	1,814	1,675	1,811	91	91	90	90	91	88	70	72	69	29	31	29
North Lanarkshire	4,257	4,210	4,243	90	89	91	92	90	91	74	73	74	30	27	29
Orkney Islands	259	295	311	97	97	96	97	97	96	86	88	88	40	44	45
Perth & Kinross	1,515	1,351	1,576	91	89	89	90	90	90	79	78	77	38	38	37
Renfrewshire	2,258	2,132	2,270	93	91	94	94	91	93	79	77	80	37	37	37
Scottish Borders	1,297	1,289	1,407	91	91	92	92	92	90	80	81	81	40	40	37
Shetland Islands	328	295	349	96	98	94	95	97	93	90	89	85	45	43	45
South Ayrshire	1,423	1,402	1,403	92	93	93	92	93	92	78	77	77	40	39	38
South Lanarkshire	3,772	3,651	3,848	92	92	92	91	90	90	76	77	77	35	34	35
Stirling	1,001	1,089	1,086	93	91	92	92	90	90	80	79	76	42	42	42
West Dunbartonshire	1,250	1,124	1,225	91	90	90	91	93	91	74	77	76	30	28	32
West Lothian	2,081	2,019	2,089	94	95	95	94	92	93	78	77	80	36	33	35

Note: 2006 figures are pre-appeal. In past years, the post-appeal figures are generally no more than one percentage point higher than the equivalent pre-appeal figure.

Table 7: S5 Attainment, by education authority

Attainment by the end of S5 is calculated as a percentage of the S4 year group from the previous year.

Education Authority	Relevant S4 Roll as at September			Percentage of the S4 year group staying on to S5 (post Christmas)			Percentage of the S4 year group from the previous year achieving:								
							5+ Awards at SCQF level 5 (e.g. Standard Grade Credit) or better			1+ Awards at SCQF level 6 (Higher) or better			3+ Awards at SCQF level 6 (Higher) or better		
	2002/03	2003/04	2004/05	2003/04	2004/05	2005/06	2003/04	2004/05	2005/06	2003/04	2004/05	2005/06	2003/04	2004/05	2005/06
Scotland	61,035	60,446	58,871	64	64	64	45	45	45	39	39	38	23	23	21
Aberdeen City	2,115	2,105	1,960	60	60	63	45	45	45	40	39	39	25	24	21
Aberdeenshire	3,030	2,993	2,985	65	64	64	55	54	54	47	46	45	30	30	27
Angus	1,342	1,354	1,297	63	61	60	48	48	47	44	41	39	27	24	23
Argyll & Bute	1,078	1,034	1,079	74	74	77	51	47	54	46	41	45	27	20	25
Clackmannanshire	594	597	555	62	56	59	36	37	41	31	29	37	15	17	20
Dumfries & Galloway	1,941	1,884	1,809	62	61	60	48	48	45	41	41	39	25	25	21
Dundee City	1,733	1,697	1,624	56	55	54	32	34	32	30	29	29	14	15	15
East Ayrshire	1,526	1,497	1,554	67	65	59	42	44	40	37	36	33	21	19	18
East Dunbartonshire	1,633	1,691	1,620	77	76	75	59	58	59	53	49	51	35	33	33
East Lothian	1,054	1,058	1,013	64	67	65	48	49	51	41	41	42	27	25	25
East Renfrewshire	1,300	1,390	1,360	85	84	85	72	69	69	66	62	61	47	43	41
Edinburgh City	3,851	3,787	3,723	62	63	64	45	46	46	40	40	39	25	25	24
Eilean Siar	352	399	356	76	73	74	60	55	57	55	51	50	27	28	26
Falkirk	1,637	1,601	1,619	69	69	67	41	39	39	36	33	34	19	16	18
Fife	4,513	4,382	4,244	63	63	61	44	45	42	38	37	34	22	21	19
Glasgow City	5,727	5,541	5,557	56	55	54	31	32	31	25	27	25	12	13	12
Highland	2,763	2,762	2,717	70	71	68	50	51	50	44	43	43	26	25	25
Inverclyde	1,092	1,031	1,053	66	69	70	43	48	45	35	42	38	20	23	19
Midlothian	1,073	1,118	1,015	55	56	60	38	41	43	32	33	33	17	16	17
Moray	1,110	1,172	1,100	62	65	64	45	47	45	39	40	38	21	21	19
North Ayrshire	1,813	1,814	1,675	59	59	60	38	37	40	31	32	34	18	18	18
North Lanarkshire	4,336	4,257	4,210	62	60	62	40	40	38	34	35	32	17	19	15
Orkney Islands	289	259	295	67	66	66	54	58	56	43	49	48	22	30	27
Perth & Kinross	1,451	1,515	1,351	69	67	68	51	49	49	45	42	41	25	26	25
Renfrewshire	2,270	2,258	2,132	65	67	65	47	48	46	39	40	40	23	23	22
Scottish Borders	1,301	1,297	1,289	67	65	62	52	50	50	46	43	41	27	27	25
Shetland Islands	340	328	295	63	64	69	55	59	57	47	46	46	28	27	27
South Ayrshire	1,433	1,423	1,402	71	66	68	49	49	49	42	41	41	27	26	25
South Lanarkshire	3,790	3,772	3,651	64	65	65	45	46	45	41	40	38	23	24	21
Stirling	1,121	1,001	1,089	74	74	72	52	53	52	49	48	47	33	30	29
West Dunbartonshire	1,308	1,250	1,124	66	67	69	39	41	39	33	32	33	16	18	16
West Lothian	2,021	2,081	2,019	59	62	59	43	46	42	36	37	34	21	21	18

Note: 2006 figures are pre-appeal. In past years, the post-appeal figures are generally no more than one percentage point higher than the equivalent pre-appeal figure.

Table 8: S6 Attainment, by education authority

Attainment by the end of S6 is calculated as a percentage of the S4 year group two years previously.

Education Authority	Relevant S4 Roll as at September			Percentage of the S4 year group staying on to S6			Percentage of the S4 year group from two years previously achieving:								
							3+ Awards at SCQF level 6 (Higher) or better			5+ Awards at SCQF level 6 (Higher) or better			1+ Awards at SCQF level 7 (Advanced Higher) or better		
	2001/02	2002/03	2003/04	2003/04	2004/05	2005/06	2003/04	2004/05	2005/06	2003/04	2004/05	2005/06	2003/04	2004/05	2005/06
Scotland	59,998	61,035	60,446	45	44	44	31	30	30	20	19	19	12	12	12
Aberdeen City	2,029	2,115	2,105	42	45	44	31	33	32	20	22	22	14	17	15
Aberdeenshire	2,993	3,030	2,993	45	43	43	39	37	36	25	25	25	17	17	16
Angus	1,411	1,342	1,354	44	42	42	32	36	32	21	23	21	14	15	13
Argyll & Bute	965	1,078	1,034	51	58	50	36	36	28	22	23	18	14	16	13
Clackmannanshire	562	594	597	37	39	37	23	22	24	14	12	14	9	9	12
Dumfries & Galloway	1,817	1,941	1,884	44	44	43	34	33	32	23	23	23	14	14	14
Dundee City	1,693	1,733	1,697	37	37	40	22	21	22	13	12	13	9	9	10
East Ayrshire	1,564	1,526	1,497	43	42	43	29	28	28	18	18	17	11	11	11
East Dunbartonshire	1,620	1,633	1,691	60	57	54	45	44	40	32	31	29	20	20	19
East Lothian	1,012	1,054	1,058	47	48	45	34	33	32	23	24	21	19	19	14
East Renfrewshire	1,330	1,300	1,390	68	65	65	53	55	51	39	40	37	24	22	24
Edinburgh City	3,743	3,851	3,787	47	47	48	33	33	32	21	22	22	15	14	15
Eilean Siar	357	352	399	61	54	53	39	39	40	22	20	27	12	11	15
Falkirk	1,555	1,637	1,601	45	47	43	24	27	23	14	16	14	10	9	10
Fife	4,383	4,513	4,382	45	44	44	29	29	28	19	19	18	14	13	12
Glasgow City	5,642	5,727	5,541	34	33	33	19	17	19	11	10	11	6	5	6
Highland	2,832	2,763	2,762	51	50	49	34	35	33	23	24	22	13	14	14
Inverclyde	1,082	1,092	1,031	47	48	50	31	28	31	19	16	20	11	11	13
Midlothian	1,085	1,073	1,118	43	39	41	26	24	25	16	15	14	13	12	12
Moray	1,084	1,110	1,172	46	43	43	32	30	28	20	18	18	12	11	12
North Ayrshire	1,722	1,813	1,814	40	38	39	23	23	23	15	15	15	9	8	7
North Lanarkshire	4,252	4,336	4,257	43	41	42	25	24	26	15	14	16	7	7	7
Orkney Islands	240	289	259	52	43	44	39	31	37	25	20	24	22	18	17
Perth & Kinross	1,429	1,451	1,515	52	48	50	34	34	34	22	21	23	14	15	16
Renfrewshire	2,348	2,270	2,258	46	43	43	33	30	30	20	20	20	12	11	12
Scottish Borders	1,209	1,301	1,297	52	51	48	40	36	34	25	22	23	16	16	15
Shetland Islands	317	340	328	51	44	43	44	38	34	29	26	23	15	15	12
South Ayrshire	1,448	1,433	1,423	48	49	48	32	34	33	23	23	22	15	14	14
South Lanarkshire	3,772	3,790	3,772	42	44	45	30	30	31	19	19	20	9	9	11
Stirling	1,050	1,121	1,001	54	55	57	38	41	38	26	28	26	17	16	15
West Dunbartonshire	1,203	1,308	1,250	45	43	41	24	24	26	14	15	15	6	8	7
West Lothian	2,150	2,021	2,081	39	40	43	29	27	29	18	16	19	11	11	12

Note: 2006 figures are pre-appeal. In past years, the post-appeal figures are generally no more than one percentage point higher than the equivalent pre-appeal figure.