

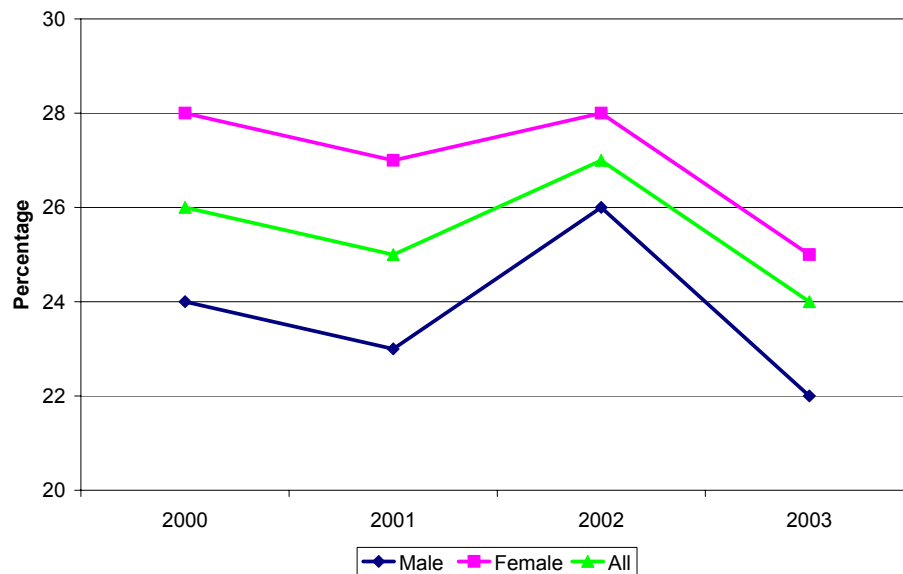
Milestone 28: Increasing the number of people across all communities taking part in voluntary activities

This milestone is measured using information from the Scottish Household Survey (SHS) on the proportion of adults who volunteer.

Volunteering

There was little change in proportion of adults volunteering from 2000 to 2002. Just over a quarter gave up their time to volunteer. In 2003 this figures dropped to 24%. Figures show that women are more likely to volunteer than men.

Chart 28a: Percentage of people who have given time to help as a volunteer, 2000 - 2003



Source: Scottish Household Survey

Age and gender analysis

In 2003, the SHS shows that women were more likely than men to volunteer in all age groups from 16 to 74. Compared to other age groups, men and women between the ages of 35 and 74 are most likely to volunteer.

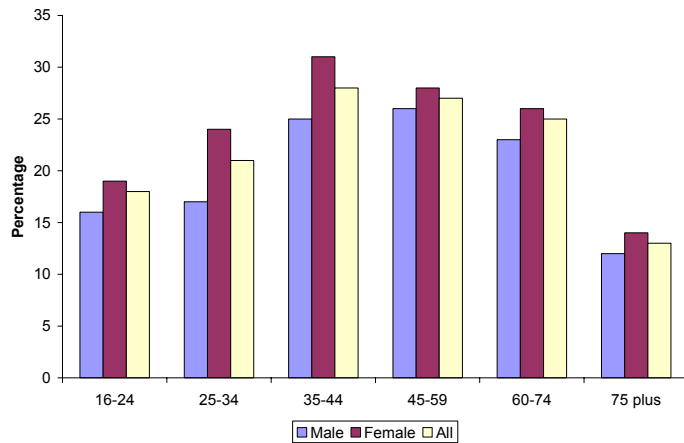
Urban Rural analysis

Since 2000, people living in rural areas have been more likely to volunteer. There is some evidence to suggest since 2002, the percentage of people volunteering in large urban areas has increased.

Interim Scottish Multiple Index of Deprivation analysis

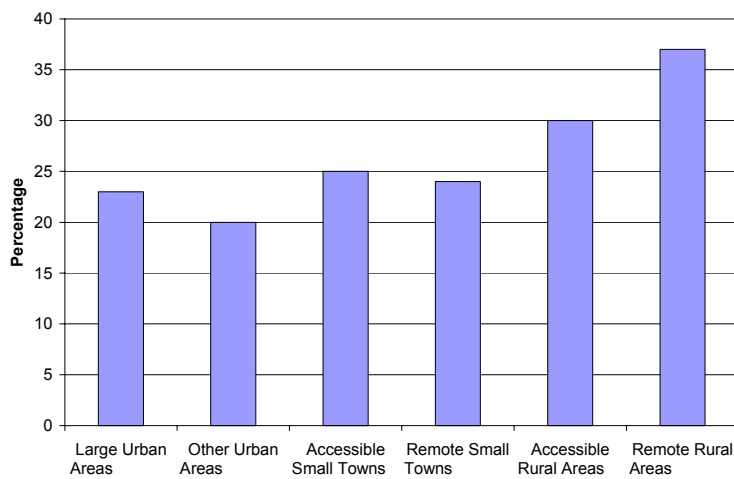
There is an association between the level of volunteering and relative area deprivation. Some 20 per cent of people living in the most relatively deprived areas volunteer, compared to around a third of people living in the least deprived areas.

Chart 28b: Percentage of people who have given time to help as a volunteer by age and sex, 2003



Source: Scottish Household Survey

Chart 28c: Percentage of people who have given time to help as a volunteer by urban rural, 2003



Source: Scottish Household Survey 2003

Background data

Table 28d: Percentage of people who have given time to help as a volunteer by age and sex, 2000- 2003

Age	2000			2001			2002			2003		
	Male	Female	All	Male	Female	All	Male	Female	All	Male	Female	All
16-24	26	24	25	18	22	20	21	23	22	16	19	18
25-34	23	29	26	20	26	24	22	28	26	17	24	21
35-44	29	35	32	26	32	29	28	32	30	25	31	28
45-59	27	31	29	27	31	29	31	32	31	26	28	27
60-74	21	27	24	25	26	26	25	27	26	23	26	25
75 plus	13	13	13	14	15	14	17	14	16	12	14	13
All	24	28	26	23	27	25	26	28	27	22	25	24

Source: Scottish Household Survey

Table 28e: Percentage of people who give up time as a volunteer, by urban rural, 2000 - 2003

	2000	2001	2002	2003
Large Urban Areas	22	21	25	23
Other Urban Areas	24	24	24	20
Accessible Small Towns	29	31	29	25
Remote Small Towns	35	29	30	24
Accessible Rural Areas	34	32	33	30
Remote Rural Areas	40	36	39	37

Source: Scottish Household Survey

Table 28f: Volunteering by interim Scottish Multiple Index of Deprivation, 2002

Scottish Multiple Index of Deprivation Quintile	2002
Most Deprived – Quintile 1	20
Quintile 2	21
Quintile 3	26
Quintile 4	33
Least Deprived – Quintile 5	34

Source: Scottish Household Survey

Table 28g: Percentage of people volunteering by economic status, 2000 - 2003

Economic Status	2000	2001	2002	2003
Self employed	41	37	37	33
Employed full time	28	26	28	24
Employed part time	33	34	33	31
Looking after the home or family	27	25	27	23
Permanently retired from work	21	23	23	22
Unemployed and seeking work	18	17	19	13
At school	35	31	41	27
In further/higher education	35	26	26	23
Gov't work or training scheme	22	13	7	*
Permanently sick or disabled	14	12	15	17
Unable to work because of short-term illness or injury	18	15	24	20
Other	32	35	35	*

* percentages not shown as sample size is less than 100.

Source: Scottish Household Survey

Availability of data and references

The information is available for 2000 to 2003. The information is available by gender, by neighbourhood type and by economic status. Data is not available by ethnicity or disability. Data on volunteering was collected in the 1999 SHS. However, the question was significantly revised in 2000 - data for 1999 is not comparable to that for 2000 onwards.

Scottish Household Survey

www.scotland.gov.uk/about/SR/CRU-SocInc/00016002/SHShome.aspx