



Statistics Publication Notice

Lifelong Learning Series

3rd May 2006

STUDENTS IN HIGHER EDUCATION AT SCOTTISH INSTITUTIONS 2004-05

Statistics on Students in Higher Education at Scottish Institutions 2004-05 are published today on the Scottish Executive website. This release contains updates of the figures in the Students in Higher Education in Scotland, 2003-04 News Release, published on 11th May 2005. Some of the tables in this release have been improved to reflect feedback from users of the statistics. (see note 4 of notes to news editors). The release contains information on HE provision in higher education institutions (HEIs) as well as further education colleges (FECs) in Scotland. Distance learning students enrolled at Scottish institutions are included in the figures. Figures on students of the Open University in Scotland are contained in a separate table.

The main points are as follows:

- In 2004-05, there were 276,705 higher education students at Scottish institutions, an increase of 1.8 per cent on the previous year. This number is 6.7 per cent higher than the corresponding number of students in Scotland in 1999-00.
- In 2004-05, 81 per cent of higher education students studied in Higher Education Institutions while 19 per cent studied in Further Education Colleges.
- Between 1999-00 and 2004-05, the number of female higher education students increased by 11 per cent to 156,615. Over the same period the number of male higher education students increased by only 1.4 per cent to 120,090.
- In 2004/05, the number of higher education students aged 25+ as a proportion of all higher education students was 45 per cent; postgraduate and sub degree students tend to be older whereas 80% of first degree students are under 25.
- There were 138,645 entrants to HE at Scottish institutions (HEIs and FECs) in 2004/05, a similar level to the previous year. The numbers of entrants to first degree courses fell by 4 percent in 2004-05, to 42,530. This ended the steady increase seen between 1998-99 and 2003-04, but is still 17 per cent higher than 1999-00.

- The number of Scottish domiciled entrants to HE at Scottish institutions fell by 2 per cent between 2003/04 and 2004/05, while the number of entrants from other parts of the UK also fell by 2 percent over this period. These losses were offset by a 15 per cent increase in entrants from outside the UK (particularly outside Europe), resulting in the total number of entrants being virtually unchanged since 2003-04.
- In 2004/05, the number of Scots studying at HEIs elsewhere in the UK was 13,100 while the number of students enrolled at Scottish HEIs from elsewhere in the UK was 26,040.
- Of foreign countries, China uses Scottish higher education most, with 4,870 students in 2004/05.
- Subjects allied to medicine and the veterinary medicine course are most popular with women (85% and 75% of entrants, respectively), whereas Engineering and Information Technology are most popular with men (90% and 76% of entrants, respectively).
- Of the 15,185 students who stated that they had a disability, 39 per cent suffered from dyslexia; altogether 6 per cent of all students stated that they had a disability.



A Scottish Executive National Statistics Publication

The following tables and charts are available on the Scottish Executive Statistics Website:
<http://www.scotland.gov.uk/stats/bulletins/00501>

Tables

Table 1: HE students at Scottish institutions, by institution type and level of study: 1996-97 to 2004-05

Table 2: HE students at Scottish institutions, by mode and gender: 1998-99 to 2004-05

Table 3: HE students at Scottish institutions, by age and level: 1998-99 to 2004-05

Table 4: HE students at Scottish institutions, by subject and level: 2004-05

Table 5: Entrants to HE at Scottish institutions, by level: 1998-99 to 2004-05

Table 6: Entrants to HE at Scottish institutions, by level, subject and gender: 2004-05

Table 7: HE students at Scottish HEIs, by institution: 1999-00, 2003-04 and 2004-05

Table 8: HE students at Scottish FECs, by institution: 1999-00, 2003-04 and 2004-05

Table 9: Students at the Open University in Scotland, by level of study: 1998-99 to 2004-05

Table 10: HE students at Scottish institutions, by receipt of Disabled Student Allowance (DSA) and disability type: 2004-05

Table 11: Distance learning HE students at Scottish institutions, by age, gender and level: 2004-05

Table 12: HE students at Scottish HEIs and FECs, by domicile and location of study: 2004-05

Table 13: Entrants to HE at Scottish institutions, by domicile and level: 1998-99 to 2004-05

Table 14: Scottish domiciled students at HEIs in the UK, by country of institution and level of study: 2004-05

Table 15: Scottish domiciled first degree entrants to HEIs in the UK, by country of institution: 2004-05

Charts

Chart 1: Students in higher education: 1996-97 to 2004-05

Chart 2: Entrants to HE at Scottish institutions, by gender & subject: 2004-05

Chart 3: Entrants to HE at Scottish institutions, by domicile: 2004-05

NOTES TO NEWS EDITORS

1. These statistics are collected by the Higher Education Statistics Agency (HESA) from Higher Education Institutions (HEIs) and, for data prior to 1998-99, by the (former) Scottish Office Education and Industry Department (SOEID) from Further Education Colleges (FECs). The Scottish Further Education Funding Council (SFEFC) has the responsibility to collect data from FECs – from the academic year 1998-99 onwards.
2. This news release contains information on students from both FECs and HEIs who are attending Higher Education courses in Scotland. Higher Education courses are defined as those at HND/HNC level and above.
3. This release gives data for a number of years to allow trends to be identified more easily. In doing this, some data have been re-classified, and so may no longer agree with previously published data. Where this is the case, this news release should be assumed to supersede any previous publications.
4. Tables 12 and 13 in this year's release each bring together data for HEIs and FECs, previously reported in separate tables.
5. This is a National Statistics publication. National Statistics are produced to high professional standards set out in the National Statistics Code of Practice. They undergo regular quality assurance reviews to ensure that they meet customer needs. They are produced free from any political interference.

This news release, together with associated tables listed above, is published on the Scottish Executive website <http://www.scotland.gov.uk/stats/bulletins/00501> those who do not have access to the Internet, please contact Gerhard Mors. See details below.

For media enquiries please contact:

Stuart Lewis
Scottish Executive
Press Office
Tel. (0141) 244 2682

For further information, non-media enquiries and comments on this publication, please contact:

Gerhard Mors
Scottish Executive
Enterprise & Lifelong Learning Department
Analytical Services Division
3rd Floor, Meridian Court
5 Cadogan Street
Glasgow, G2 6AT
Tel. (0141) 242 5488
Fax. (0141) 242 5579
E-mail. fhstatistics@scotland.gsi.gov.uk

Table 1: HE Students at Scottish institutions, by institution type and level of study: 1996-97 to 2004-05

	Total	<i>(of which study for the whole of their programme of study (to date) outside of the UK)</i>		All students to FECs ¹
		All students to HEIs ¹		
Total				
1996-97	238,095	171,965	4,790	66,130
1997-98	247,655	178,575	6,660	69,080
1998-99	255,965	184,855	6,885	71,110
1999-00	259,390	187,380	9,810	72,005
2000-01	262,915	189,965	9,020	72,950
2001-02 ²	272,625	208,540	11,440	64,090
2002-03 ²	267,025	207,455	11,395	59,565
2003-04 ²	271,865	216,255	10,910	55,610
2004-05 ²	276,705	224,390	13,230	52,315
Postgraduate				
1996-97	41,700	41,170	4,770	530
1997-98	43,295	42,890	6,660	410
1998-99	45,445	45,150	6,870	295
1999-00	48,670	48,105	9,775	560
2000-01	47,820	47,335	9,020	490
2001-02 ²	52,465	52,000	10,700	465
2002-03 ²	53,010	52,800	10,250	210
2003-04 ²	55,665	55,460	9,190	205
2004-05 ²	57,235	57,065	9,795	170
First degree				
1996-97	110,975	108,940	20	2,035
1997-98	112,970	111,100	0	1,870
1998-99	113,530	112,465	20	1,065
1999-00	113,755	112,540	35	1,210
2000-01	116,055	113,730	0	2,325
2001-02 ²	120,010	118,920	740	1,090
2002-03 ²	123,380	122,205	1,145	1,175
2003-04 ²	129,475	128,320	1,720	1,155
2004-05 ²	130,420	129,910	3,325	510
Other HE				
1996-97	85,420	21,855	0	63,570
1997-98	91,385	24,585	0	66,800
1998-99	96,990	27,240	0	69,750
1999-00	96,965	26,730	0	70,235
2000-01	99,040	28,900	0	70,135
2001-02 ²	100,150	37,615	0	62,535
2002-03 ²	90,635	32,455	0	58,180
2003-04 ²	86,725	32,475	0	54,250
2004-05 ²	89,055	37,415	110	51,635

Sources: Higher Education Statistics Agency (HESA) & Scottish Funding Council (SFC)

In this table 0, 1, 2 are rounded to 0. All other numbers are rounded up or down to the nearest 5. Numbers may not sum to totals exactly due to rounding.

1. HEIs: Higher Education Institutions. FECs: Further Education Colleges.

2. Higher education students at Bell College and UHIMI partner colleges covered in this data are included in the FEC totals for years prior to 2001-02. From 2001-02 onward such students at these institutions are included in the totals for HEIs.

Chart 1: Students in higher education: 1996-97 to 2004-05

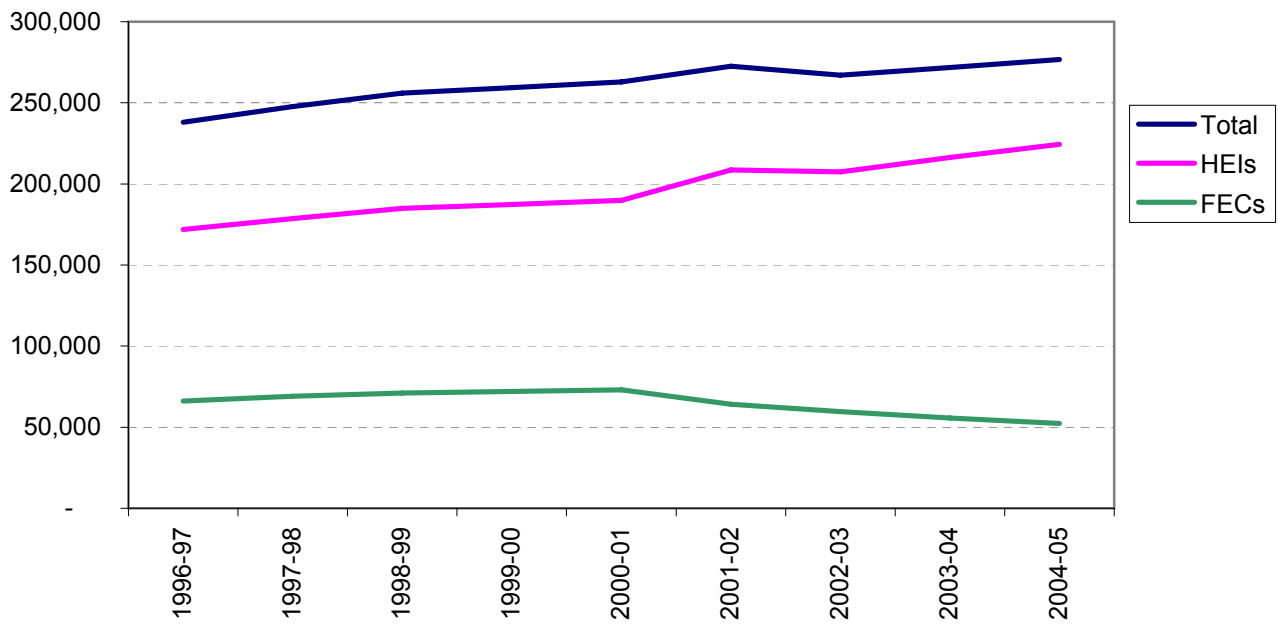


Table 2: HE students at Scottish institutions, by mode and gender: 1998-99 to 2004-05

	Total				Full-time			Part-time		
	FTE	Total	Male	Female	Total	Male	Female	Total	Male	Female
1998-99	186,720	255,965	118,055	137,905	162,970	75,115	87,855	92,995	42,945	50,050
1999-00	185,990	259,390	118,375	141,010	161,940	73,965	87,980	97,445	44,415	53,035
2000-01	187,645	262,915	117,905	145,005	165,615	74,680	90,940	97,295	43,230	54,070
2001-02	192,515	272,625	121,415	151,210	170,320	76,320	94,000	102,305	45,095	57,210
2002-03	191,475	267,025	118,700	148,325	172,130	77,085	95,045	94,890	41,610	53,280
2003-04	191,205	271,865	120,265	151,600	176,010	78,945	97,060	95,860	41,320	54,540
2004-05	192,120	276,705	120,090	156,615	177,305	78,765	98,545	99,400	41,330	58,070

Source: Higher Education Statistics Agency (HESA) & Scottish Funding Council (SFC)

In this table 0, 1, 2 are rounded to 0. All other numbers are rounded up or down to the nearest 5. Numbers may not sum to totals exactly due to rounding.

FTE' denotes Full Time Equivalents

Table 3: HE students at Scottish institutions, by age and level: 1998-99 to 2004-05

	Total	Under 21	21-24	25-29	30-39	40-49	50+	Unknown
Total								
1998-99	255,965	87,040	55,450	31,660	45,845	26,235	9,050	680
1999-00	259,390	87,635	55,625	30,865	47,355	27,000	10,560	345
2000-01	262,915	87,485	58,035	29,810	47,470	27,865	11,840	410
2001-02	272,625	88,005	60,880	30,775	49,700	29,725	12,765	780
2002-03	267,025	86,690	62,435	29,325	46,805	29,300	12,150	320
2003-04	271,865	87,140	63,820	30,295	45,625	30,805	13,955	225
2004-05	276,705	85,685	65,775	31,980	45,285	32,630	15,145	210
Postgraduate								
1998-99	45,445	160	8,325	10,400	15,370	8,845	2,125	225
1999-00	48,670	245	8,405	10,895	16,850	9,580	2,560	130
2000-01	47,820	160	8,200	10,430	16,440	9,760	2,685	145
2001-02	52,465	160	8,915	11,420	18,060	10,715	3,040	155
2002-03	53,010	130	9,435	11,280	17,775	10,900	3,360	130
2003-04	55,665	80	10,050	11,875	17,490	11,735	4,325	110
2004-05	57,235	95	11,020	12,600	16,975	11,850	4,630	60
First Degree								
1998-99	113,530	59,590	33,885	7,530	8,195	3,440	850	40
1999-00	113,755	59,835	34,290	6,980	8,095	3,665	860	25
2000-01	116,055	59,595	36,255	6,725	8,325	4,065	1,055	30
2001-02	120,010	60,640	37,745	6,875	8,845	4,690	1,160	55
2002-03	123,380	61,820	39,020	7,070	8,940	5,195	1,310	20
2003-04	129,475	62,845	40,985	8,350	9,765	5,975	1,545	15
2004-05	130,420	61,610	42,090	9,145	9,900	6,050	1,590	35
Other HE								
1998-99	96,990	27,295	13,245	13,730	22,280	13,945	6,080	410
1999-00	96,965	27,555	12,930	12,990	22,410	13,755	7,140	190
2000-01	99,040	27,730	13,580	12,655	22,705	14,040	8,105	230
2001-02	100,150	27,205	14,220	12,480	22,795	14,325	8,560	570
2002-03	90,635	24,740	13,980	10,975	20,090	13,205	7,475	170
2003-04	86,725	24,215	12,785	10,070	18,375	13,095	8,085	95
2004-05	89,055	23,975	12,670	10,230	18,410	14,725	8,925	115

Source: Higher Education Statistics Agency (HESA) & Scottish Funding Council (SFC)

In this table 0, 1, 2 are rounded to 0. All other numbers are rounded up or down to the nearest 5. Numbers may not sum to totals exactly due to rounding.

Table 4: HE students at Scottish institutions, by subject and level: 2004-05

	Total	Postgraduate	First Degree	Other HE
Total	276,705	57,235	130,420	89,055
Medicine and Dentistry	6,865	1,165	5,490	205
Allied Medicine	34,210	4,460	15,895	13,855
Biological Sciences	14,580	2,535	11,385	660
Veterinary Studies	1,740	275	1,190	275
Agriculture	1,700	360	505	835
Physical Sciences	7,365	1,610	5,550	210
Maths	3,255	695	2,315	245
Information Technology	14,290	2,340	6,205	5,745
Engineering & Technology	20,890	3,425	9,555	7,910
Architecture	8,670	1,845	4,515	2,310
Social Studies	21,120	2,810	9,280	9,030
Law	7,325	2,120	4,295	910
Business Administration	52,995	16,975	18,445	17,580
Education	20,120	11,790	5,045	3,290
Mass Communication	4,410	735	2,355	1,320
Languages	7,735	1,220	4,810	1,705
Humanities	6,270	1,235	4,540	495
Creative Arts	15,330	845	6,625	7,860
Combined	27,835	805	12,420	14,615

Source: Higher Education Statistics Agency (HESA) & Scottish Funding Council (SFC)

In this table 0, 1, 2 are rounded to 0. All other numbers are rounded up or down to the nearest 5. Numbers may not sum to totals exactly due to rounding.

Table 5 - Entrants to HE at Scottish institutions, by level: 1998-99 to 2004-05

	Total	<i>-of which, studying for the whole of their programme of study (to date) outside the UK</i>	Higher Degrees (Research) ¹	Higher Degrees (Taught) ¹	Other Postgraduate ¹	First Degree	Other Undergraduate
1998-99	135,225	2,790	2,800	12,380	10,640	37,460	71,945
1999-00	133,060	2,205	2,755	11,000	9,780	36,380	73,145
2000-01	133,680	505	2,830	9,520	9,795	37,590	73,945
2001-02	141,445	1,980	3,040	11,540	10,955	40,490	75,420
2002-03	134,820	1,190	2,890	11,235	9,980	42,300	68,410
2003-04	138,520	1,125	3,310	12,560	11,455	44,250	66,945
2004-05	138,645	2,455	3,340	13,620	10,375	42,530	68,780

Source: Higher Education Statistics Agency (HESA) & Scottish Funding Council (SFC)

In this table 0, 1, 2 are rounded to 0. All other numbers are rounded up or down to the nearest 5. Numbers may not sum to totals exactly due to rounding.

1. Higher degrees (research) include doctorate, masters and postgraduate bachelors degrees mainly by research.

Higher degrees (taught) include doctorate, masters and postgraduate bachelors degrees not mainly by research.

Other postgraduate includes ordinary PGCE and all other postgraduate qualifications.

Table 6 - Entrants to HE at Scottish institutions, by level, subject and gender: 2004-05

	All levels			Postgraduate			First degree			Sub degree		
	Total	Male	Female	Total	Male	Female	Total	Male	Female	Total	Male	Female
Total	138,645	43%	57%	27,330	47%	53%	42,530	44%	56%	68,780	41%	59%
Medicine and Dentistry	1,840	38%	62%	420	31%	69%	1,280	40%	60%	140	33%	67%
Allied Medicine	15,490	15%	85%	2,070	27%	73%	5,320	15%	85%	8,095	12%	88%
Biological Sciences	5,470	37%	63%	1,185	40%	60%	3,795	35%	65%	495	44%	56%
Veterinary Studies	635	25%	75%	140	42%	58%	285	22%	78%	210	17%	83%
Agriculture	1,050	61%	39%	250	61%	39%	180	58%	42%	620	62%	38%
Physical Sciences	2,820	59%	41%	960	57%	43%	1,690	61%	39%	165	54%	46%
Maths	1,340	56%	44%	420	58%	42%	700	56%	44%	215	55%	45%
Information Technology	8,490	76%	24%	1,520	75%	25%	2,380	84%	16%	4,595	71%	29%
Engineering & Technology	11,325	90%	10%	1,915	86%	14%	3,360	90%	10%	6,050	91%	9%
Architecture	4,290	75%	25%	990	63%	37%	1,580	70%	30%	1,720	86%	14%
Social Studies	11,865	27%	73%	1,625	43%	57%	2,720	36%	64%	7,520	20%	80%
Law	3,755	42%	58%	1,645	47%	53%	1,425	38%	62%	690	40%	60%
Business Administration	25,900	42%	58%	5,395	54%	46%	6,445	43%	57%	14,065	37%	63%
Education	9,760	29%	71%	5,805	28%	72%	1,595	19%	81%	2,360	36%	64%
Mass Communication	2,425	42%	58%	510	32%	68%	830	40%	60%	1,085	49%	51%
Languages	3,725	31%	69%	770	31%	69%	1,385	27%	73%	1,575	35%	65%
Humanities	2,055	49%	51%	685	53%	47%	1,120	49%	51%	250	42%	58%
Creative Arts	8,530	34%	66%	525	40%	60%	2,080	36%	64%	5,925	32%	68%
Combined	17,875	39%	61%	500	52%	48%	4,360	42%	58%	13,010	38%	62%

Source: Higher Education Statistics Agency (HESA) & Scottish Funding Council (SFC)

In this table 0, 1, 2 are rounded to 0. All other numbers are rounded up or down to the nearest 5. Numbers may not sum to totals exactly due to rounding.

Percentages have been calculated on unrounded numbers

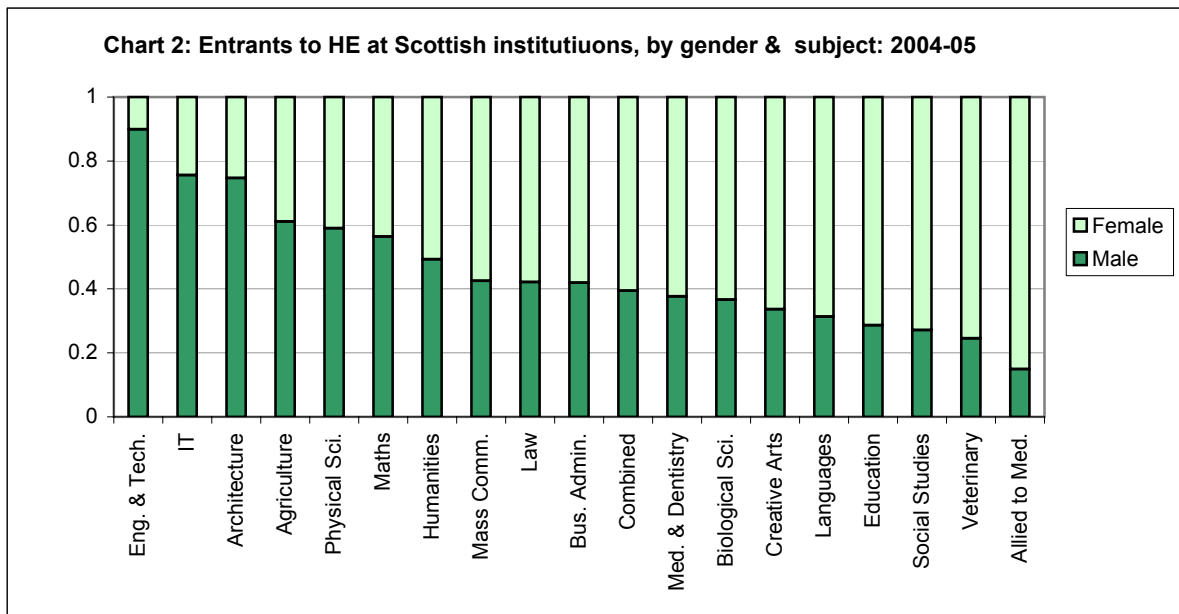


Table 7 - HE students at Scottish HEIs, by institution: 1999-00, 2003-04 & 2004-05

	1999-00	2003-04	2004-05	: of which studying for the whole of their programme of study (to date) outside of the UK
Total	187,380	216,255	224,390	13,230
University of Abertay Dundee	4,130	4,085	4,155	0
Edinburgh College of Art	1,640	1,580	1,710	0
Glasgow School of Art	1,535	1,485	1,575	0
Queen Margaret College	3,900	4,635	5,150	0
RSAMD	630	670	700	0
The Robert Gordon University	10,395	12,175	12,440	0
The University of Paisley	10,745	11,450	13,155	290
Glasgow Caledonian University	14,880	15,885	16,550	95
Napier University	11,370	14,205	15,240	1,445
The University of Edinburgh	22,410	24,010	23,635	0
The University of Glasgow	22,095	24,180	24,490	0
The University of Strathclyde	23,915	24,490	25,290	1,430
The University of Aberdeen	12,050	15,300	15,355	0
Heriot-Watt University	15,680	17,790	18,110	9,890
The University of Dundee	13,060	17,785	19,110	0
The University of St Andrews	6,375	7,745	8,190	0
The University of Stirling	8,260	8,725	8,465	75
Scottish Agricultural College	875	750	795	0
Northern College of Education ¹	3,445			
UHI Millennium Institute ²		5,235	6,365	0
Bell College ²		4,075	3,915	0

Source: Higher Education Statistics Agency (HESA)

In this table 0, 1, 2 are rounded to 0. All other numbers are rounded up or down to the nearest 5. Numbers may not sum to totals exactly due to rounding.

RSAMD: Royal Scottish Academy of Music and Drama

1. Northern College of Education merged with the Universities of Aberdeen and Dundee in 2001-02.

2. Higher education students at Bell College and UHIMI partner colleges covered are included in the FEC totals for years prior to 2001-02. From 2001-02 onward such students at these institutions are included in the totals for HEIs.

Table 8 - HE students at Scottish FECs, by institution: 1999-00, 2003-04,2004-05

	1999-00	2003-04	2004-05
Total	72,005	55,610	52,315
Banff & Buchan College of Further Education	610	690	610
Aberdeen College	8,010	5,210	4,320
Angus College	895	900	930
Dundee College	2,890	2,625	2,795
Fife College of Further & Higher Education	3,685	2,470	2,330
Glenrothes College	1,750	990	1,405
Elmwood College	485	385	425
Lauder College	1,515	1,445	1,500
Oatridge Agricultural College	225	220	185
Edinburghs Telford College	3,055	3,585	3,265
Stevenson College	2,205	1,680	1,855
West Lothian College	1,430	1,210	1,065
Jewel and Esk Valley College	1,565	1,240	1,315
Newbattle Abbey College	30	45	45
Borders College	455	325	390
Clackmannan College of Further Education	540	370	355
Falkirk College of Further & Higher Education	3,530	2,515	2,285
Barony College	35	60	65
Dumfries and Galloway College	875	715	670
Kilmarnock College	1,330	1,340	1,225
Ayr College	1,665	1,325	1,315
Clydebank College	1,155	1,020	925
Cumbernauld College	420	690	595
Anniesland College	1,335	1,005	850
Cardonald College	1,865	1,405	1,335
Central College of Commerce	2,980	2,785	2,520
Glasgow College of Building and Printing	1,925	2,570	1,930
Glasgow College of Food Technology	870	640	640
Glasgow College of Nautical studies	2,175	2,920	3,205
Langside College	1,030	1,115	1,270
Stow College	1,950	2,335	1,880
South Lanarkshire College	1,015	800	755
John Wheatley College	155	200	195
North Glasgow College	645	680	680
Coatbridge College	885	850	685
Motherwell College	1,280	1,365	1,315
Reid Kerr College	1,670	1,890	1,835
James Watt College of Further & Higher Education	3,325	4,005	3,355
Bell College of Technology ¹	3,565	N/A	N/A
Inverness College ¹	2,305	N/A	N/A
Lews Castle College ¹	450	N/A	N/A
Moray College ¹	1,185	N/A	N/A
Perth College ¹	2,145	N/A	N/A
Thurso College ¹	570	N/A	N/A
Orkney College ¹	125	N/A	N/A
Sabhal Mor Ostaig ¹	80	N/A	N/A
Shetland College of Further Education ¹	105	N/A	N/A

Source: Scottish Funding Council (SFC)

In this table 0, 1, 2 are rounded to 0. All other numbers are rounded up or down to the nearest 5. Numbers may not sum to totals exactly due to rounding.

1. Students at Bell College and UHIMI partner colleges covered in these data are included in the HEI totals from 2001-02 onward.

Table 9 - Students at the Open University in Scotland, by level of study: 1998-99 to 2004-05

Year	Students			Entrants
	Total	Postgraduate	Undergraduate	
1998-99	12,290	1,930	10,360	3,340
1999-00	13,605	1,845	11,760	4,725
2000-01	13,775	1,465	12,310	4,535
2001-02	14,465	1,405	13,060	4,925
2002-03	14,410	1,285	13,120	4,570
2003-04	14,845	1,170	13,675	5,400
2004-05	14,335	1,070	13,265	4,665

Source: The Open University

These students are not included in other tables in this release.

In this table 0, 1, 2 are rounded to 0. All other numbers are rounded up or down to the nearest 5.

Numbers may not sum to totals exactly due to rounding.

Table 10 - HE students at Scottish institutions, by receipt of Disabled Student Allowance (DSA) and disability type: 2004-05

	Total	HEIs	FECs
HE student population¹	263,475	211,160	52,315
Students declaring a disability	15,190	11,785	3,405
of which:			
Disability and in receipt of DSA	4,065	3,825	240
Disability but NOT in receipt of DSA	6,405	5,035	1,370
Disability but DSA information not known/not sought	4,715	2,920	1,795
No known disability	248,290	199,380	48,910
Disability type:			
Dyslexia.	5,865	4,990	875
Blind/are partially sighted.	410	320	90
Deaf/have a hearing impairment.	790	620	170
Wheelchair user/mobility difficulties.	635	470	165
Personal care support.	30	20	10
Mental health difficulties.	845	650	195
Unseen disability, e.g. diabetes, epilepsy, asthma.	3,595	2,670	925
Multiple disabilities.	515	400	115
Autistic Spectrum Disorder.	60	60	not recorded
Disability not listed above.	1,980	1,585	395
Unknown disability ²	465	0	465
Total	15,190	11,785	3,405

Source: Higher Education Statistics Agency (HESA) & Scottish Funding Council (SFC)

In this table 0, 1, 2 are rounded to 0. All other numbers are rounded up or down to the nearest 5. Numbers may not sum to totals exactly due to rounding.

1. 13,230 students studying wholly overseas are excluded from the figures because institutions are not required to return disability information for this group.

2. Disability type information was not always present for students coded as having a disability.

Table 11 - Distance learning HE students at Scottish institutions, by age, gender and level: 2004-05¹

	Total	Postgraduate			First degree			Sub degree		
		Total	Male	Female	Total	Male	Female	Total	Male	Female
Total	28,695	17,850	10,700	7,150	5,645	2,005	3,640	5,200	1,970	3,230
of which:										
UK based	15,470	8,060	3,785	4,270	2,320	525	1,795	5,090	1,910	3,175
study wholly overseas	13,230	9,795	6,915	2,880	3,325	1,480	1,845	110	60	50
Age:										
Unknown	35	15	5	10	15	5	10	5	-	5
Under 21	450	5	-	-	250	120	130	195	115	80
21-24	1,995	485	265	220	1,190	530	660	320	150	175
25-29	3,850	2,140	1,055	1,090	1,120	400	720	590	255	330
30-39	10,615	7,500	4,625	2,875	1,600	555	1,045	1,515	620	900
40-49	8,370	5,565	3,465	2,100	1,130	305	825	1,675	495	1,180
50+	3,375	2,140	1,285	850	340	85	255	895	335	560

Source: Higher Education Statistics Agency (HESA) & Scottish Funding Council (SFC)

In this table 0, 1, 2 are rounded to 0. All other numbers are rounded up or down to the nearest 5. Numbers may not sum to totals exactly due to rounding.

1. Includes UK-based students and students studying wholly overseas.

Table 12 - HE students at Scottish HEIs & FECs, by domicile and location of study: 2004-05

	Total	HEIs		FECs
		At least some study in UK	Study wholly outside UK	All students to FECs
Total	276,705	211,160	13,230	52,315
UK domiciles				
Scotland	206,550	156,190	30	50,330
England	20,190	19,610	55	525
Wales	625	615	0	10
Northern Ireland	5,365	5,270	0	95
Other UK	495	390	100	5
Total UK	233,215	182,070	180	50,965
EU exc UK ¹	11,700	10,220	1,195	285
Non EU Europe	1,725	1,210	485	30
Other Overseas (inc top countries)	30,075	17,665	11,370	1,040
Top overseas countries				
China	4,870	4,090	730	50
United States	3,575	2,745	825	5
Malaysia	3,025	895	2,130	0
Irish Republic	2,820	2,710	75	35
Hong Kong	2,540	590	1,945	5
Greece	2,025	1,565	440	20
India	2,640	1,775	205	660
Germany	1,710	1,435	250	25
Canada	1,640	780	855	5
France	1,470	1,395	50	25

Source: Higher Education Statistics Agency (HESA) & Scottish Funding Council (SFC)

In this table 0, 1, 2 are rounded to 0. All other numbers are rounded up or down to the nearest 5. Numbers may not sum to totals exactly due to rounding.

1. The 2004-05 EU data include the new accession countries which joined in May 2004.

Table 13 : Entrants to HE at Scottish institutions, by domicile and level: 1998-99 to 2004-05

	Total all domiciles	Scotland	England	Wales	Northern Ireland	Other UK ¹	Total UK	EU ²	Non EU Europe ²	Other overseas
Total										
1999-00	133,060	111,565	6,975	205	1,920	130	120,795	4,355	680	7,230
2000-01	133,680	112,970	6,775	205	1,830	85	121,865	4,585	810	6,415
2001-02	141,445	117,010	7,270	235	1,870	175	126,560	4,775	900	9,215
2002-03	134,820	109,615	6,665	240	1,975	405	118,900	5,110	860	9,950
2003-04	138,520	111,755	6,920	250	1,790	295	121,010	5,550	900	11,065
2004-05	138,645	109,510	6,955	230	1,660	185	118,540	6,205	675	13,225
Postgrad										
1999-00	23,535	13,660	2,050	65	310	50	16,135	2,135	330	4,930
2000-01	22,145	13,415	2,145	65	320	35	15,980	2,225	415	3,525
2001-02	25,535	14,720	2,115	75	290	95	17,300	2,410	555	5,270
2002-03	24,105	13,185	1,945	75	260	145	15,615	2,485	455	5,550
2003-04	27,330	15,100	2,080	90	300	140	17,700	2,555	520	6,555
2004-05	27,330	13,750	2,120	85	265	75	16,295	2,820	445	7,770
First degree										
1999-00	36,380	27,460	4,090	105	1,435	65	33,150	1,615	270	1,345
2000-01	37,590	28,945	3,780	115	1,345	40	34,225	1,610	325	1,430
2001-02	40,490	30,785	4,080	125	1,425	50	36,465	1,745	270	2,010
2002-03	42,300	31,865	3,840	110	1,550	110	37,480	2,050	260	2,515
2003-04	44,250	33,235	4,010	140	1,365	55	38,800	2,325	290	2,840
2004-05	42,530	30,780	4,015	130	1,265	60	36,250	2,530	180	3,570
Sub degree										
1999-00	73,145	70,450	835	35	175	10	71,505	605	75	955
2000-01	73,945	70,610	850	25	165	15	71,665	750	70	1,460
2001-02	75,420	71,505	1,075	35	155	25	72,795	615	75	1,935
2002-03	68,410	64,560	880	55	165	150	65,810	575	145	1,880
2003-04	66,945	63,425	835	25	125	100	64,510	665	90	1,675
2004-05	68,780	64,975	820	20	125	55	65,995	855	50	1,885

Source: Higher Education Statistics Agency (HESA) & Scottish Funding Council (SFC)

In this table 0, 1, 2 are rounded to 0. All other numbers are rounded up or down to the nearest 5. Numbers may not sum to totals exactly due to rounding.

1. Other UK domiciles include the Channel Islands, Isle of Man and UK domiciles where the country was not identified

2. The 2004-05 EU data include the new accession countries which joined in May 2004.

Chart 3: Entrants to HE at Scottish institutions, by domicile : 2004-05

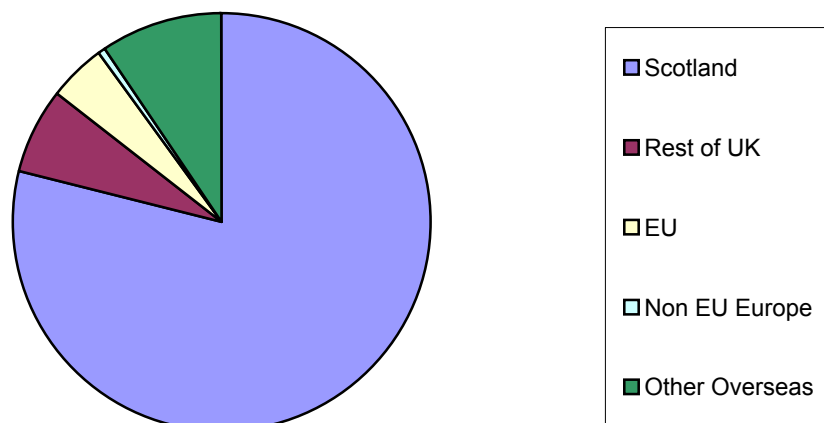


Table 14 - Scottish domiciled students at HEIs in the UK, by country of institution and level of study: 2004-05

	Total	Scottish Institution	English Institution	Northern Irish Institution	Welsh Institution
Total	169,315	156,215	12,060	185	855
Postgraduate	31,350	26,930	4,100	130	190
First degree	100,800	94,705	5,840	50	205
Sub degree	37,170	34,585	2,115	10	460

Source: Higher Education Statistics Agency (HESA)

In this table 0, 1, 2 are rounded to 0. All other numbers are rounded up or down to the nearest 5. Numbers may not sum to totals exactly due to rounding.

Excludes Open University students

Table 15 - Scottish domiciled first degree entrants to HEIs in the UK, by country of institution: 2004-05

Total	32,445
Scottish Institution	30,420
Northern Irish Institution	20
Welsh Institution	70
English Institution	1,930
Of which:	
- The University of Newcastle-upon-Tyne	165
- The University of Northumbria at Newcastle	95
- The University of Cambridge	90
- University of Durham	80
The University of Manchester	80
- The University of Oxford	75
Other English Institutions	1,345

Source: Higher Education Statistics Agency (HESA)

In this table 0, 1, 2 are rounded to 0. All other numbers are rounded up or down to the nearest 5.

Numbers may not sum to totals exactly due to rounding.

Excludes Open University students