

## **Reducing the gap in unemployment rates between the worst areas and the average rate for Scotland 1997-2004**

This target is measured by information from a single derived indicator. The sources of the information for the indicator are the claimant count figures from the Office for National Statistics and the number of economically active residents estimated from the General Register for Scotland Census of Population and the Labour Force Survey..

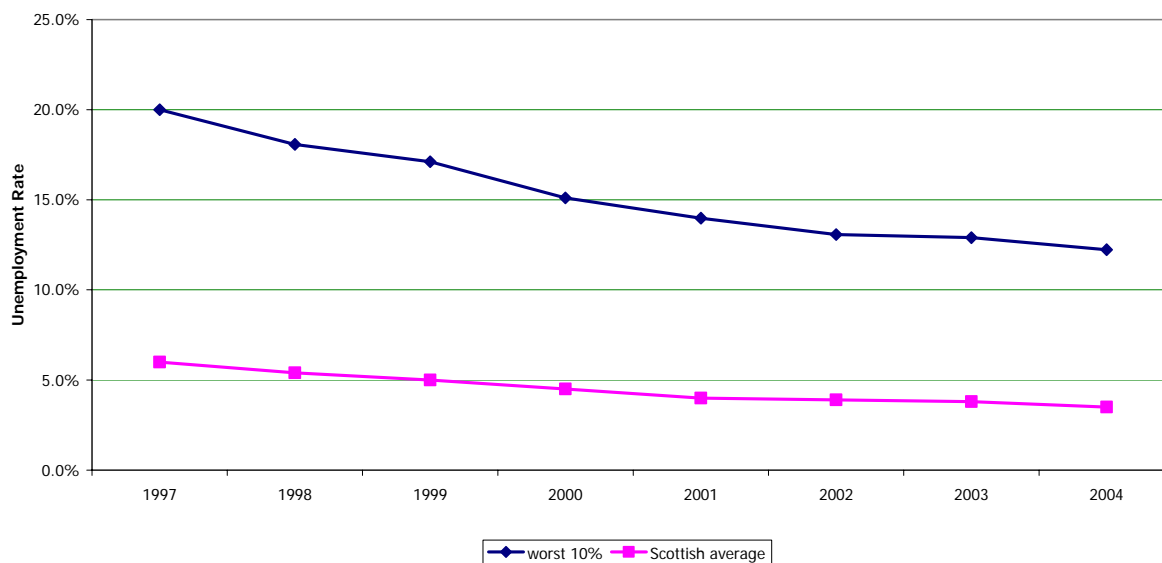
This measure is based on the claimant count rate and is not directly comparable with the Labour Force Survey unemployment rate which is consistent with the International Labour Organisation definition of unemployment. The unemployment rate has been calculated by dividing the number of claimant unemployed by the number of economically active residents. The 'worst areas' have been defined as the 10 percent of wards which have the highest claimant unemployment rates in Scotland in each year. Therefore the selection of the worst 10% of wards changes each year. For comparability over time, 1991 ward boundaries are used to define ward areas from 1997 to 2004. The claimant count figures are the average of 12 monthly figures. The economically active figures from the census have been pro-rated to ensure consistency with previously published national figures.

*The calculation of the unemployment rate for the worst 10% of areas has been revised, so the data included here differ from previously published data for this milestone. For the 10 per cent of wards with the highest unemployment rates, the calculation used here divides the sum of claimant counts in all of those wards by the sum of the economically active population in those wards. This effectively gives an overall unemployment rate for those wards; providing adjustment for the different relative sizes of the wards. The previously published data were based on the average of the unemployment rates in the worst 10 percent of wards and therefore took no account of the different sizes of the wards.*

### ***Unemployment rate***

The Chart below shows the relationship between the claimant count unemployment rate for Scotland as a whole and the unemployment rate of the worst 10 per cent of wards. The long term trend for both Scotland and the worst areas is of decreasing unemployment. In 1997 the Scottish claimant unemployment rate was 6.0 per cent and among the worst 10 per cent of wards was 20.0 per cent. In 2004, these rates were 3.5 and 12.2 per cent respectively. The gap between the worst 10% of wards and the Scottish rate has decreased from 14.0 per cent in 1997 to 8.7 per cent in 2004.

**Reducing gap between unemployment rate in worst areas and Scotland average,  
1997-2004**



Sources: Claimant Count: Office for National Statistics. General Register Office for Scotland

**Background data**

**Unemployment rate in the worst areas and Scotland, 1997 - 2004**

Year	Scotland	'Worst 10%'	Gap
1997	6.0%	20.0%	14.0%
1998	5.4%	18.1%	12.7%
1999	5.0%	17.1%	12.1%
2000	4.5%	15.1%	10.6%
2001	4.0%	14.0%	10.0%
2002	3.9%	13.1%	9.2%
2003	3.8%	12.9%	9.1%
2004	3.5%	12.2%	8.7%

Source: Claimant Count: Office for National Statistics, General Register Office for Scotland

Data for 2000 and 2001 claimant count have been revised by the Office of National Statistics following a seasonal adjustment review in May 2003

**Availability of data and references**

The above indicator is based on 1991 ward boundaries.