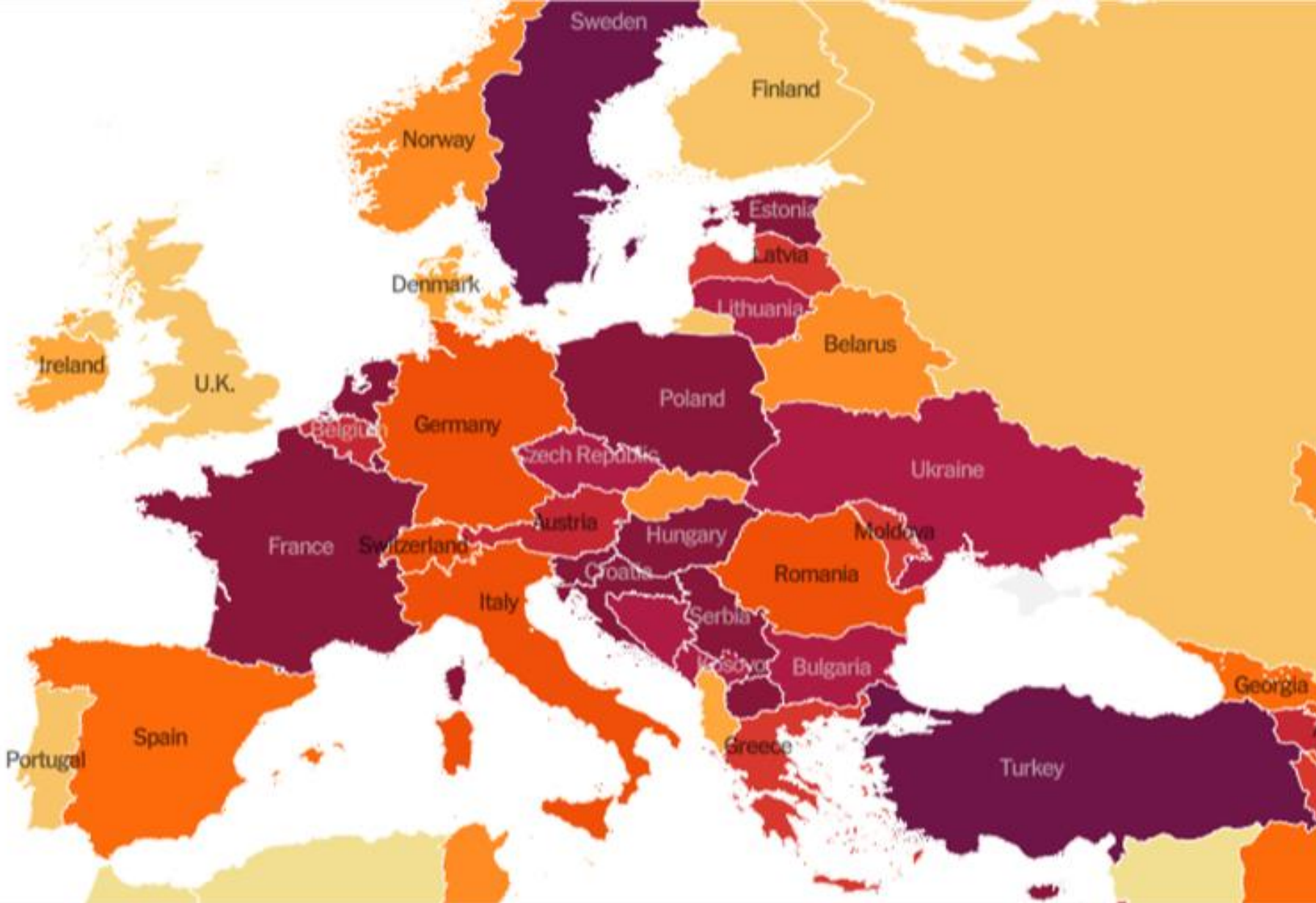
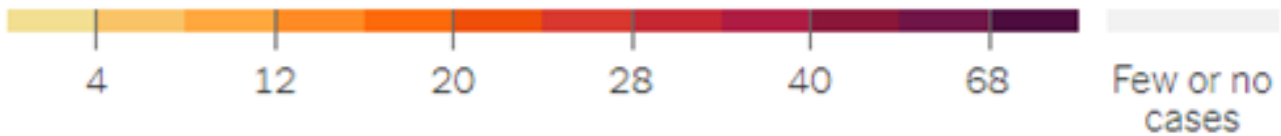


# Covid: State of the epidemic

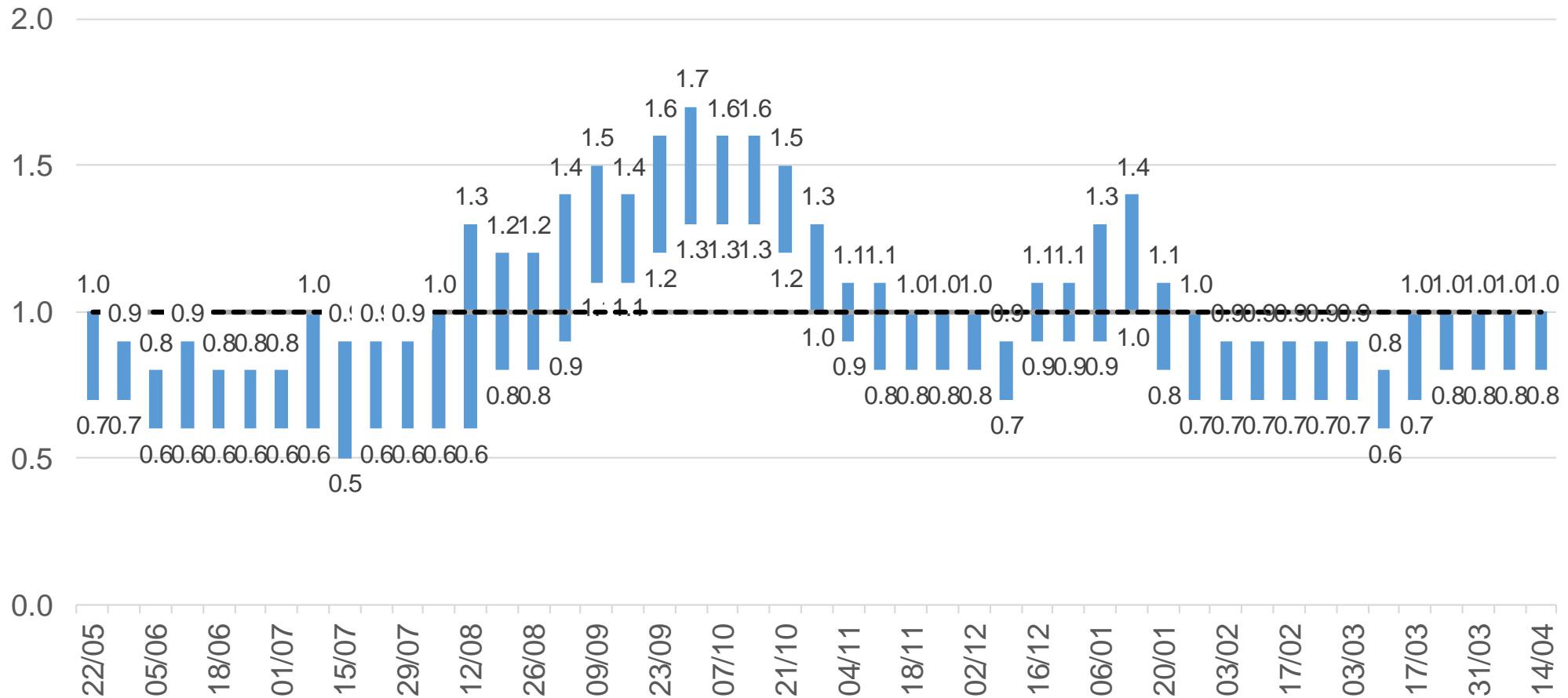


Average daily cases per 100,000 people in past week



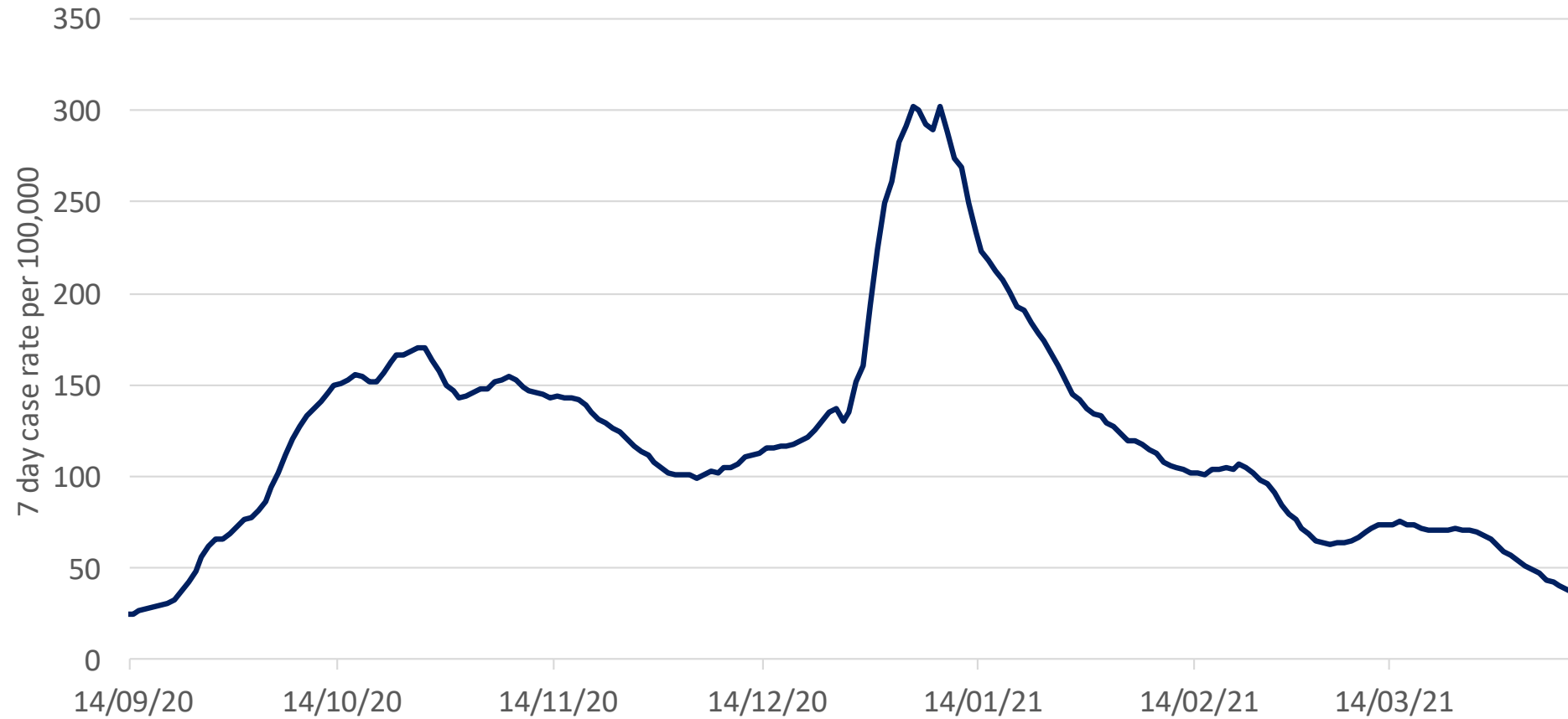
# Provisional R-rate in Scotland

OFFICIAL  
SENSITIVE



# Seven day case rate for Scotland per 100,000 population by specimen date

OFFICIAL  
SENSITIVE



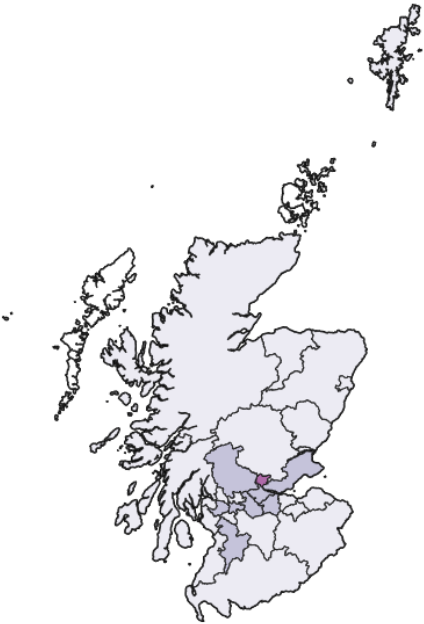
# 7 Day Cases per 100,000 population by Local Authority and Health Board

	Total new cases in the week, per 100,000 population	Change since previous day	Change since previous week	Weekly Trend ( 04-Apr 11-Apr )
Clackmannanshire	89	-2	-122	
North Lanarkshire	63	-1	-19	
Glasgow City	59	0	-15	
Renfrewshire	58	1	-30	
West Lothian	55	-1	-32	
Fife	48	-1	-3	
Falkirk	47	-4	-15	
Moray	46	1	15	
Dundee City	44	-1	-3	
Stirling	41	-3	-19	
South Lanarkshire	40	2	-5	
East Renfrewshire	39	-1	5	
East Ayrshire	38	-2	-28	
Aberdeen City	33	1	3	
West Dunbartonshire	27	-1	-7	
East Dunbartonshire	27	-1	-8	
Perth and Kinross	20	-1	-18	
City of Edinburgh	19	-2	-13	
East Lothian	19	-1	-19	
North Ayrshire	19	-3	-16	
Inverclyde	18	-3	4	
Aberdeenshire	17	-2	-11	
South Ayrshire	14	-3	-2	
Shetland Islands	13	0	9	
Angus	13	-1	-28	
Highland	11	-1	-8	
Midlothian	9	-1	-41	
Argyll and Bute	7	1	-1	
Dumfries and Galloway	3	1	2	
Scottish Borders	3	0	-1	
Na h-Eileanan Siar	0	0	0	
Orkney Islands	0	0	0	
Scotland	35	-1	-13	

	Total new cases in the week, per 100,000 population	Change since previous day	Change since previous week	Weekly Trend ( 04-Apr 11-Apr )
NHS Forth Valley	53	-3	-34	
NHS Lanarkshire	52	0	-12	
NHS Greater Glasgow & Clyde	50	0	-13	
NHS Fife	48	-1	-3	
NHS Grampian	28	0	-1	
NHS Tayside	27	-1	-16	
NHS Lothian	26	-2	-20	
NHS Ayrshire & Arran	24	-3	-16	
NHS Shetland	13	0	9	
NHS Highland	10	0	-7	
NHS Dumfries & Galloway	3	1	2	
NHS Borders	3	0	-1	
NHS Western Isles	0	0	0	
NHS Orkney	0	0	0	
Scotland	35	-1	-13	

# 7 Day Cases per 100,000 population by Local Authority

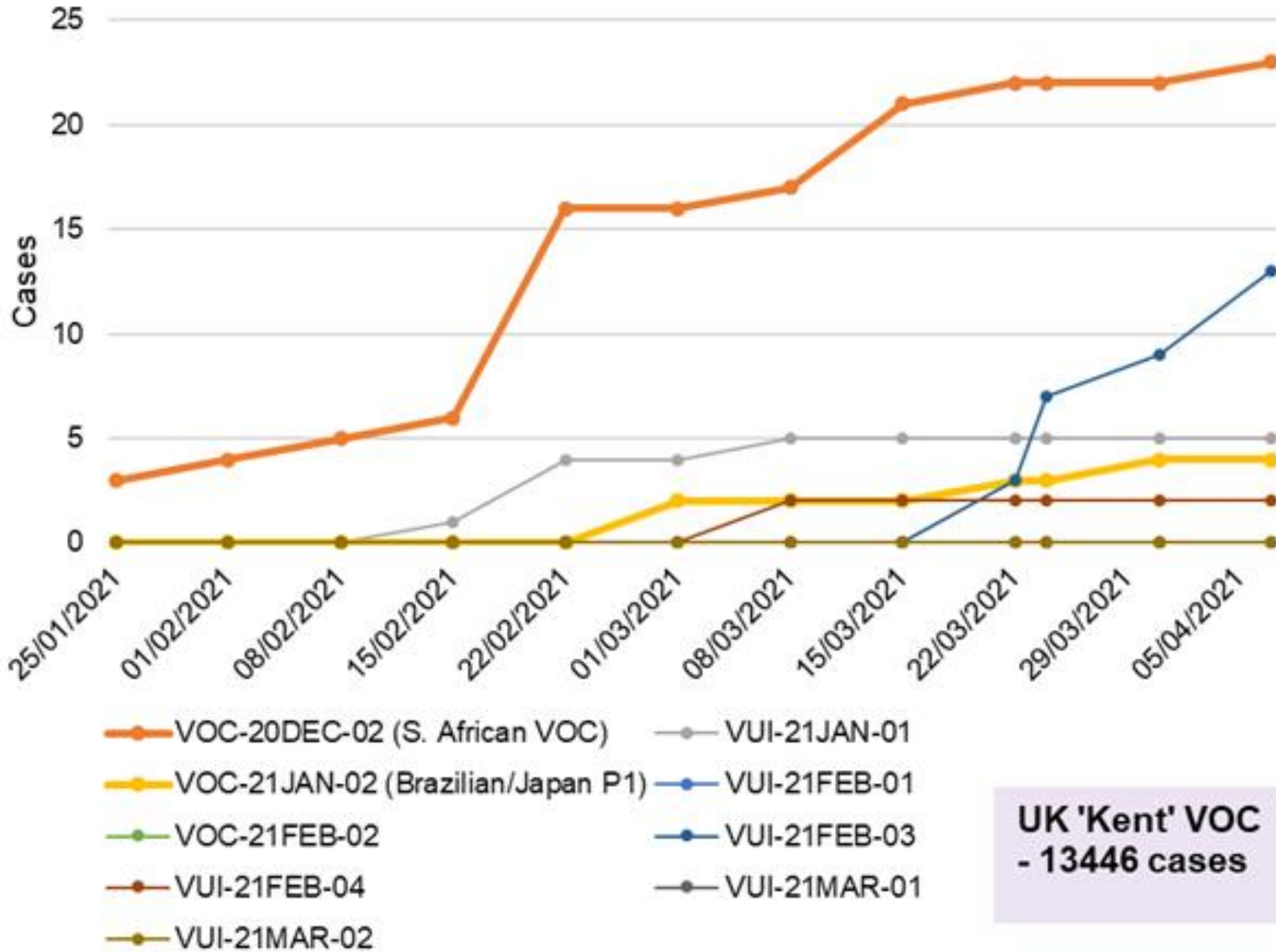
Week ending 4 April



Week ending 11 April



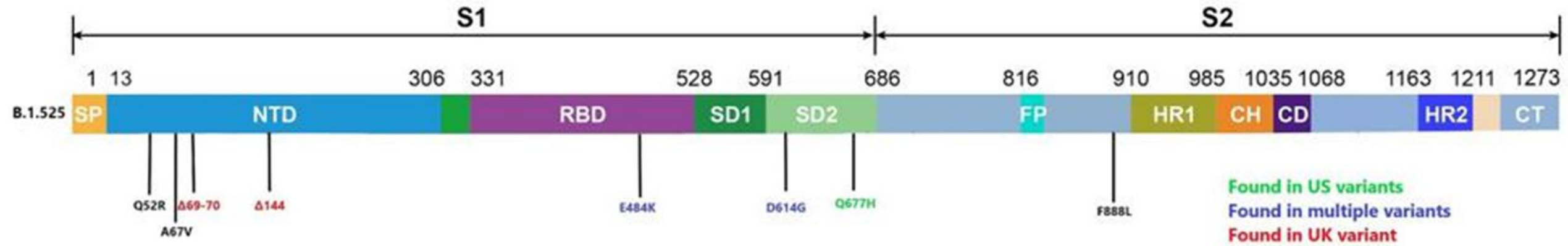
# Scotland



**UK 'Kent' VOC  
- 13446 cases**

# Nigerian variant increasing in England and Scotland since mid February

OFFICIAL  
SENSITIVE



Mutations along the spike protein of the Nigerian variant.

## VUI-21FEB-03/B.1.525 (Nigerian variant)

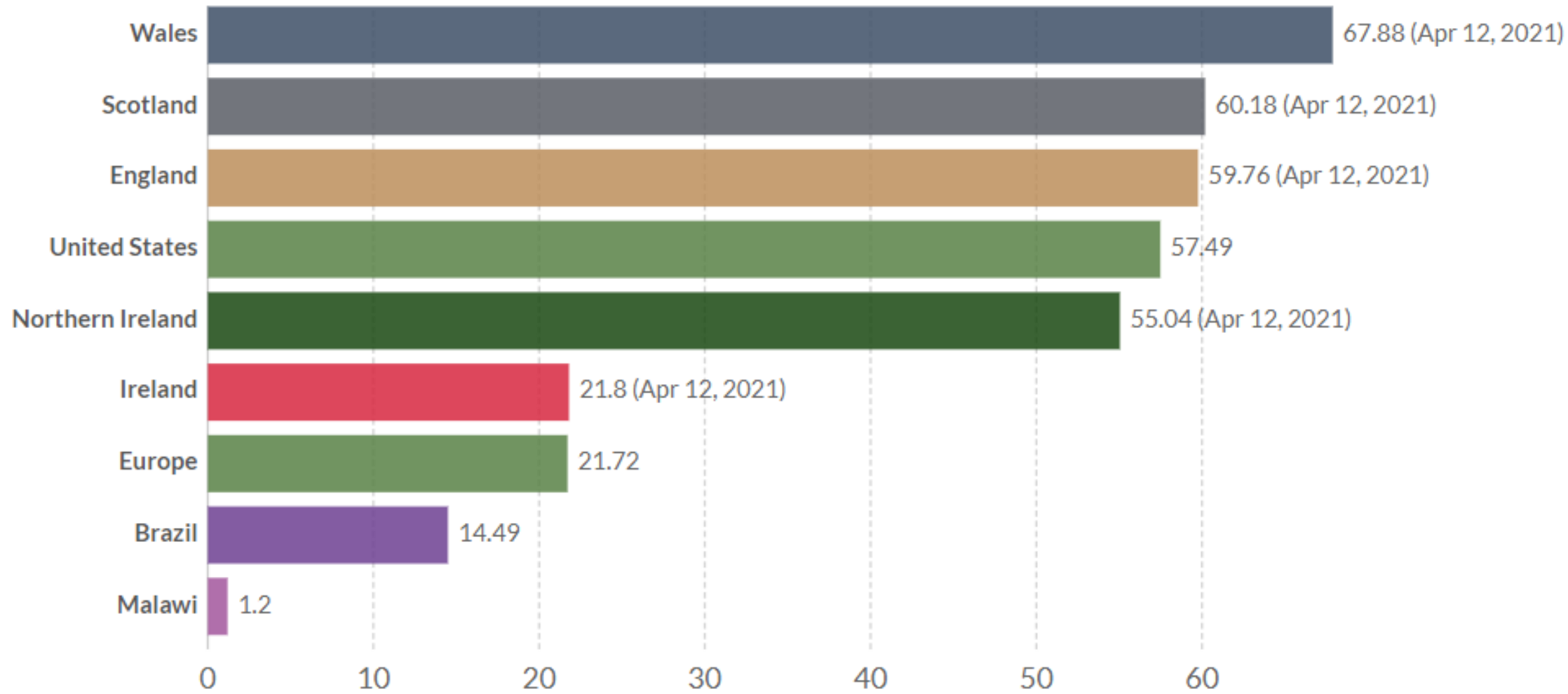
- 13 confirmed cases in Scotland (+4 from previous week)
- 328 confirmed in the UK (+36 from previous week)



# COVID-19 vaccine doses administered per 100 people, Apr 13, 2021

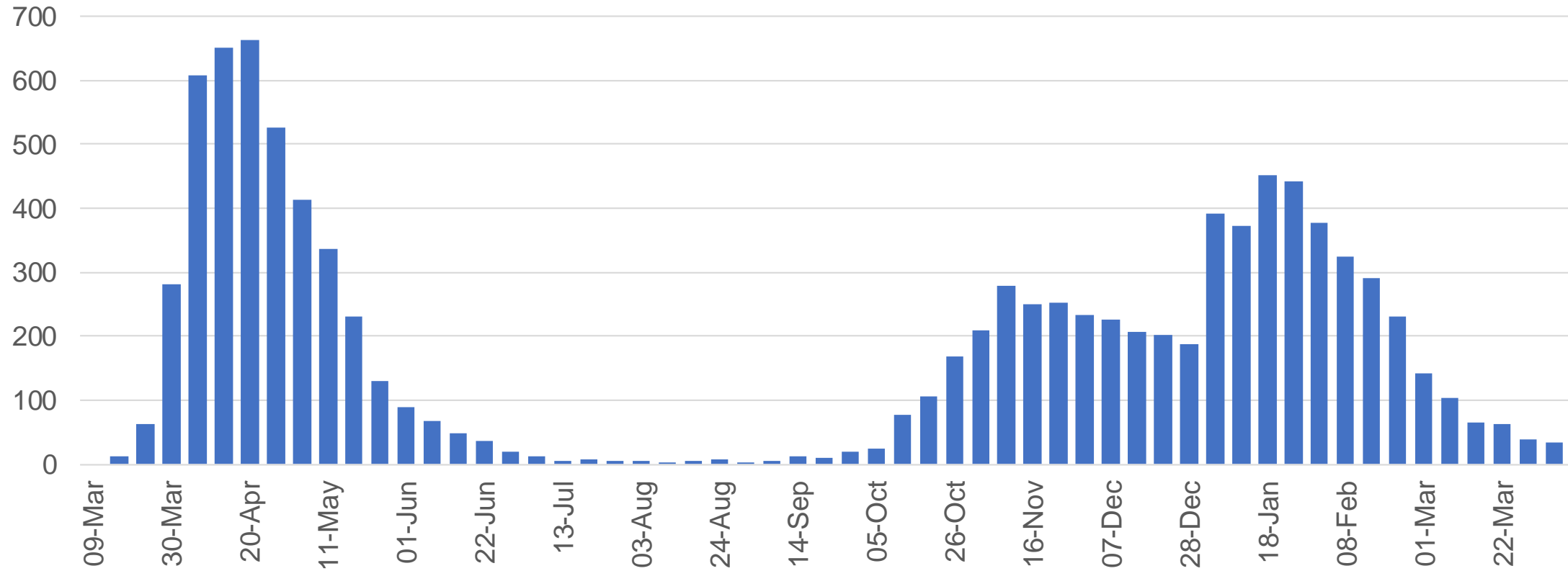
Total number of vaccination doses administered per 100 people in the total population. This is counted as a single dose, and may not equal the total number of people vaccinated, depending on the specific dose regime (e.g. people receive multiple doses).

[LINEAR](#) [LOG](#) [+ Add country](#)

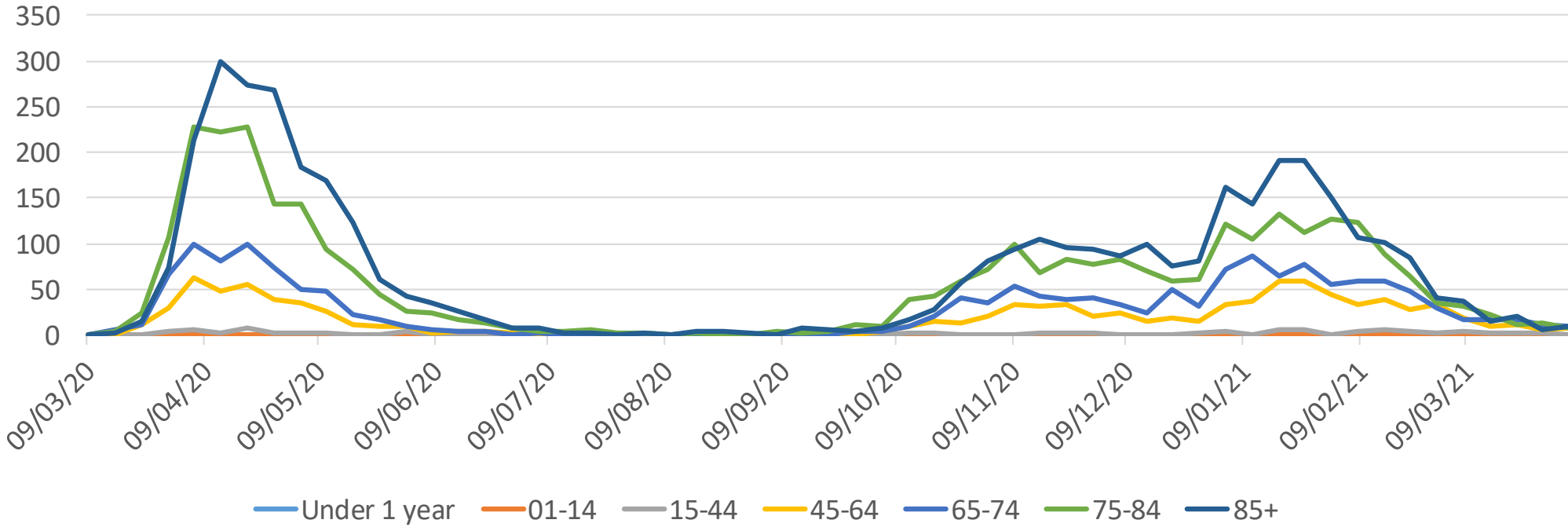


# COVID-19 Deaths in Scotland (NRS)

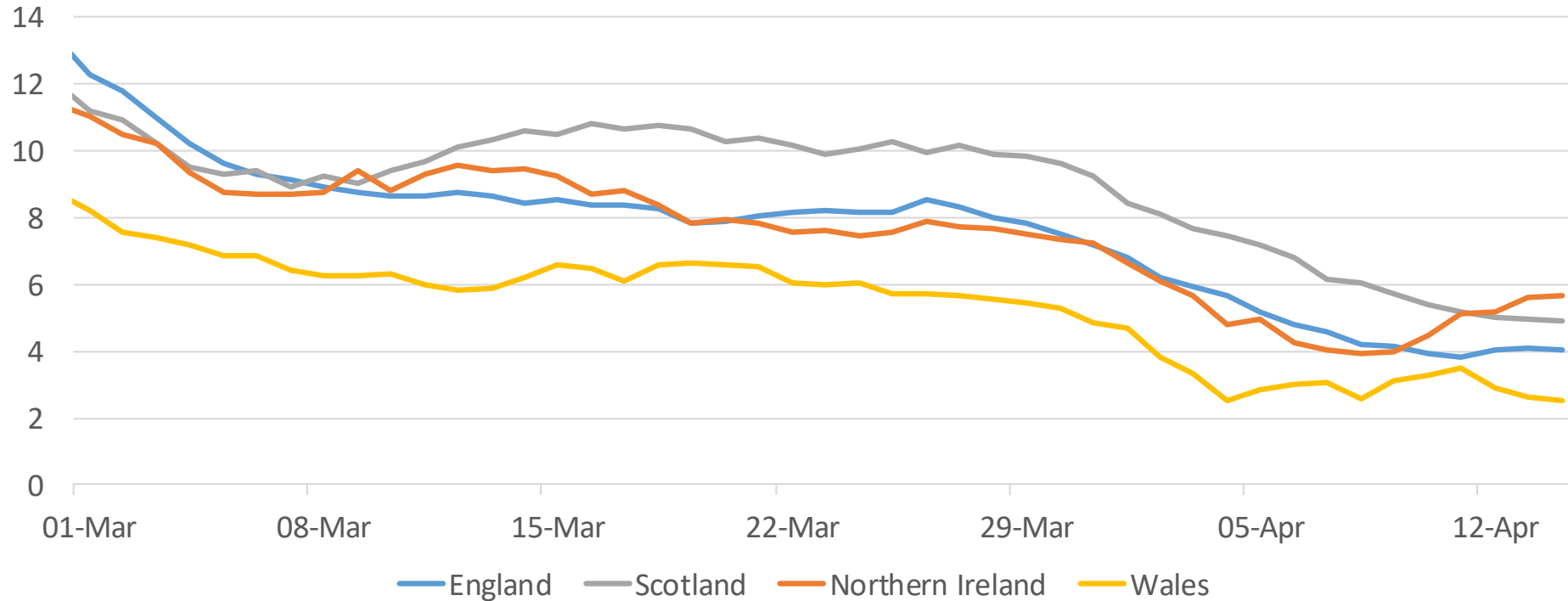
OFFICIAL  
SENSITIVE



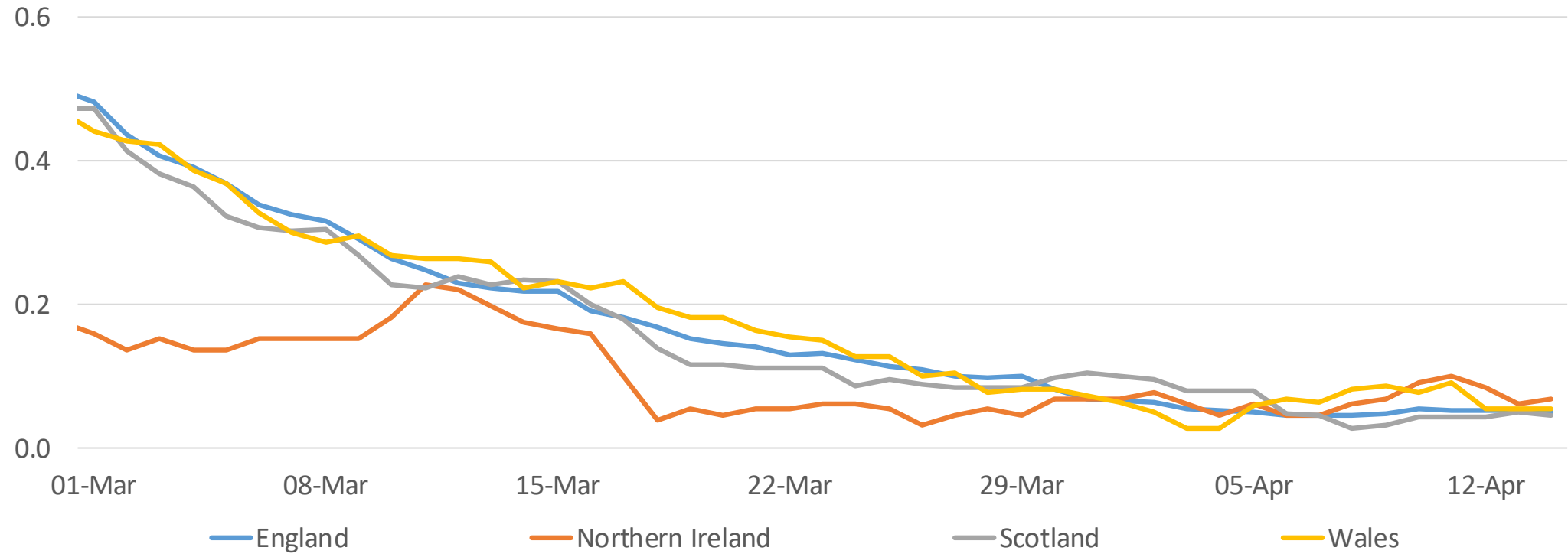
# Deaths by age group (weekly total by week beginning, NRS)



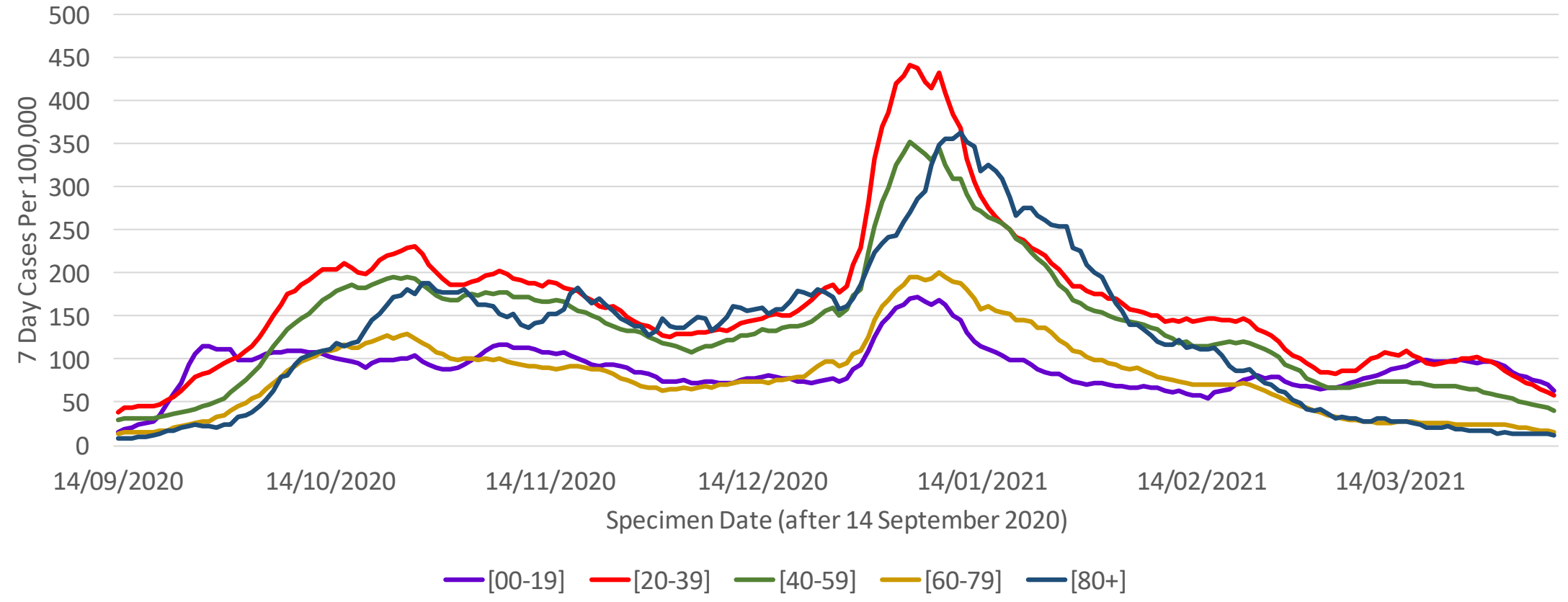
# 7 Day Average of New Daily Cases by country for UK nations per 100,000 population



# 7 Day Average of New Daily Deaths by country for UK nations per 100,000 population



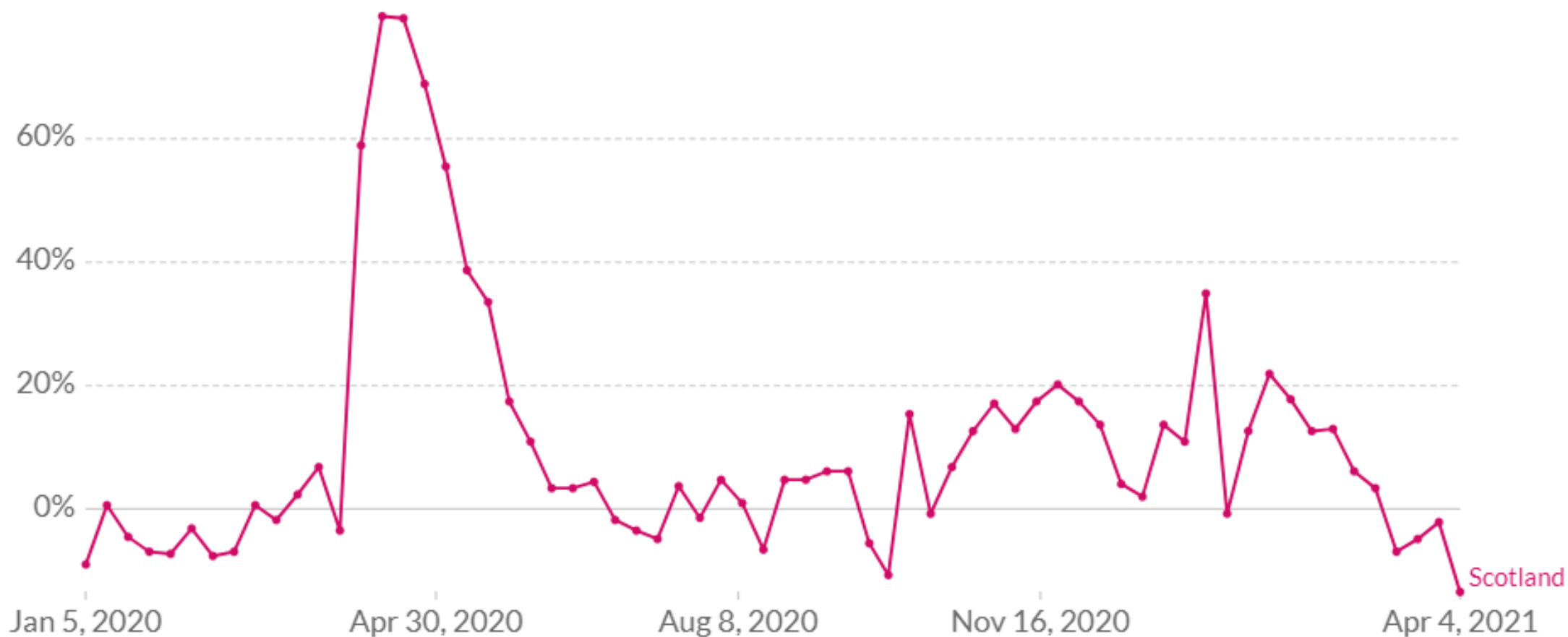
# 7 day cases per 100,000 population by age group, data up to 5 April



# Excess mortality during COVID-19: Deaths from all causes compared to previous years, all ages

Shown is how the number of weekly or monthly deaths in 2020–2021 differs as a percentage from the average number of deaths in the same period over the years 2015–2019. This metric is called the P-score. The reported number of deaths might not count all deaths that occurred due to incomplete coverage and delays in death reporting.

[+ Add country](#)



Source: Human Mortality Database (2021), World Mortality Dataset (2021)

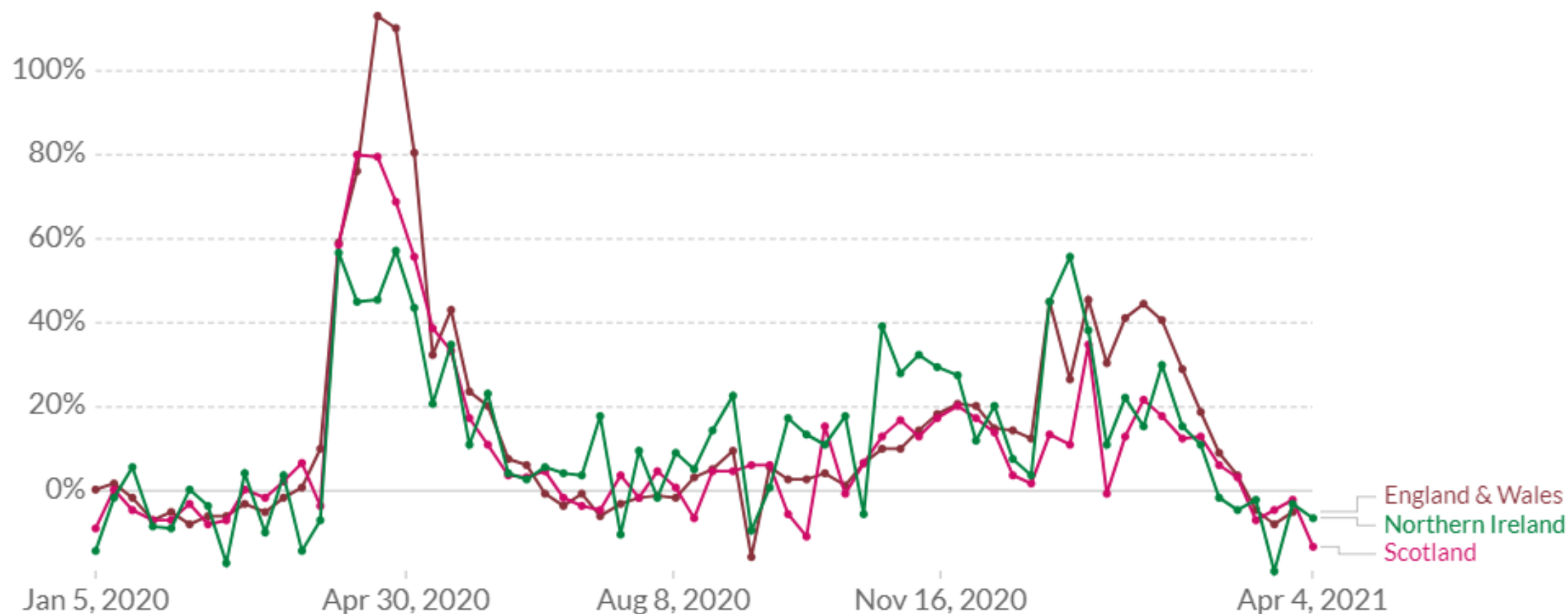
OurWorldInData.org/coronavirus • CC BY

Note: Comparisons across countries are affected by differences in the completeness of death reporting. Details can be found at our Excess Mortality page.

# Excess mortality during COVID-19: Deaths from all causes compared to previous years, all ages

Shown is how the number of weekly or monthly deaths in 2020–2021 differs as a percentage from the average number of deaths in the same period over the years 2015–2019. This metric is called the P-score. The reported number of deaths might not count all deaths that occurred due to incomplete coverage and delays in death reporting.

[+ Add country](#)



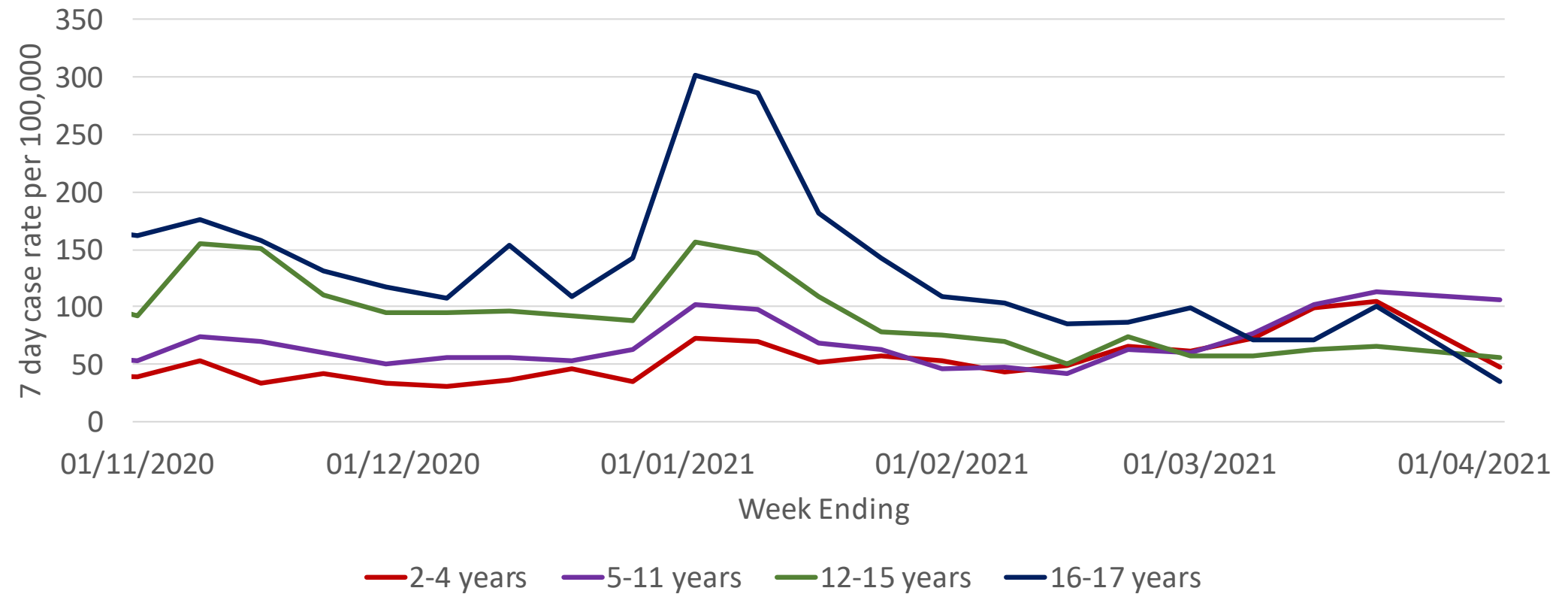
Source: Human Mortality Database (2021), World Mortality Dataset (2021)

Note: Comparisons across countries are affected by differences in the completeness of death reporting. Details can be found at our Excess Mortality page.

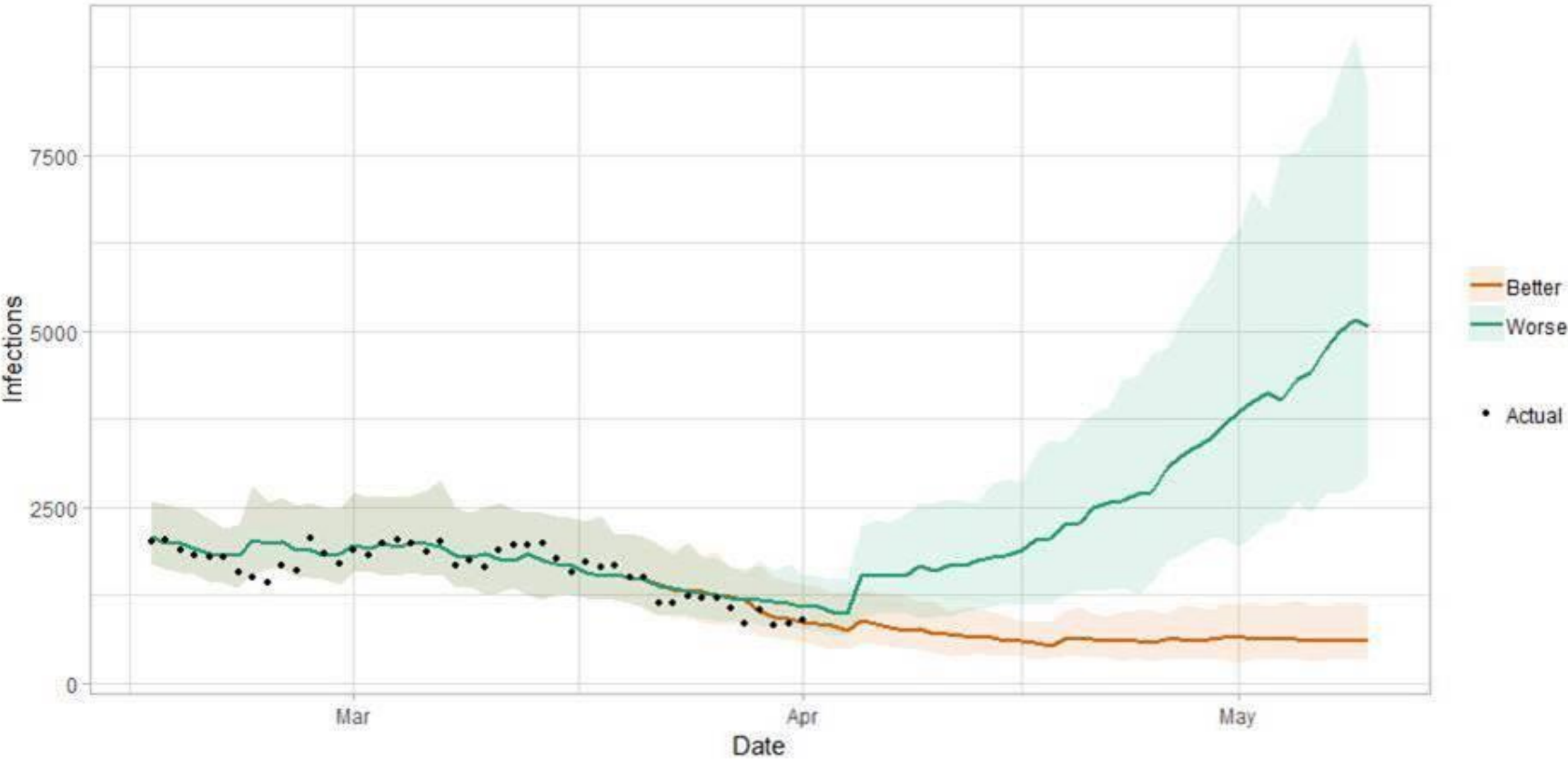
OurWorldInData.org/coronavirus • CC BY



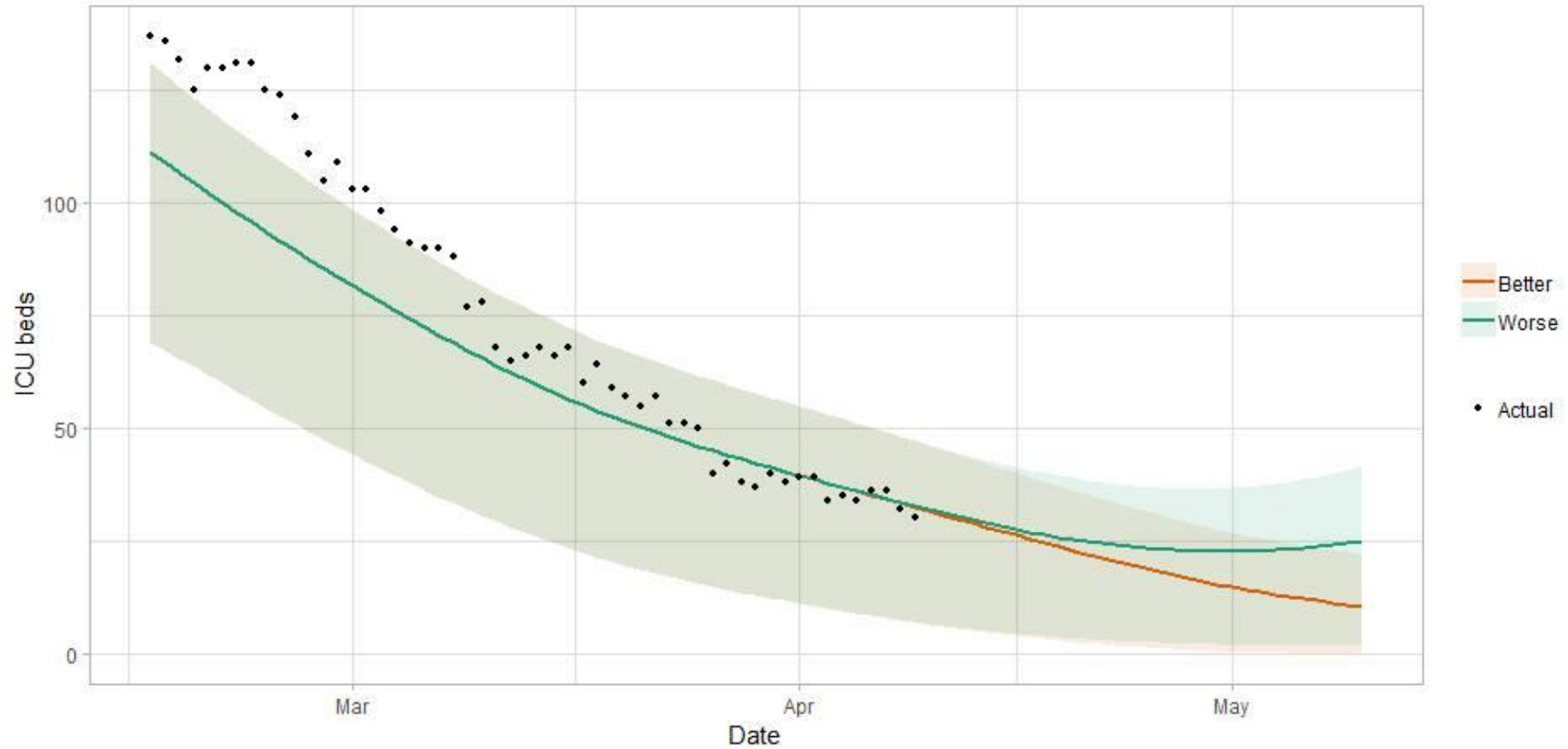
# 7-day case rate of children and young people per 100,000 (PHS)



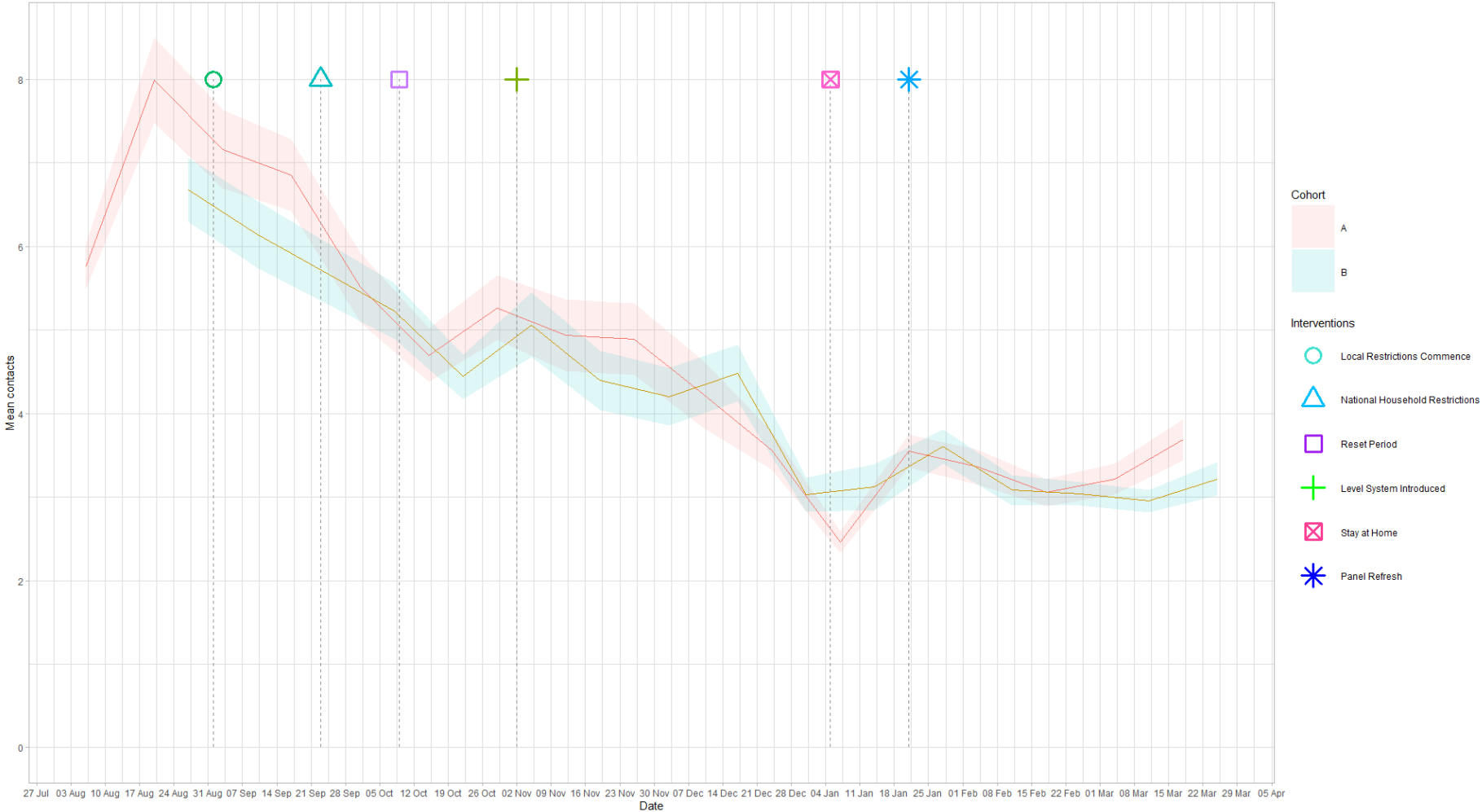
# Medium term projections of modelled total new infections



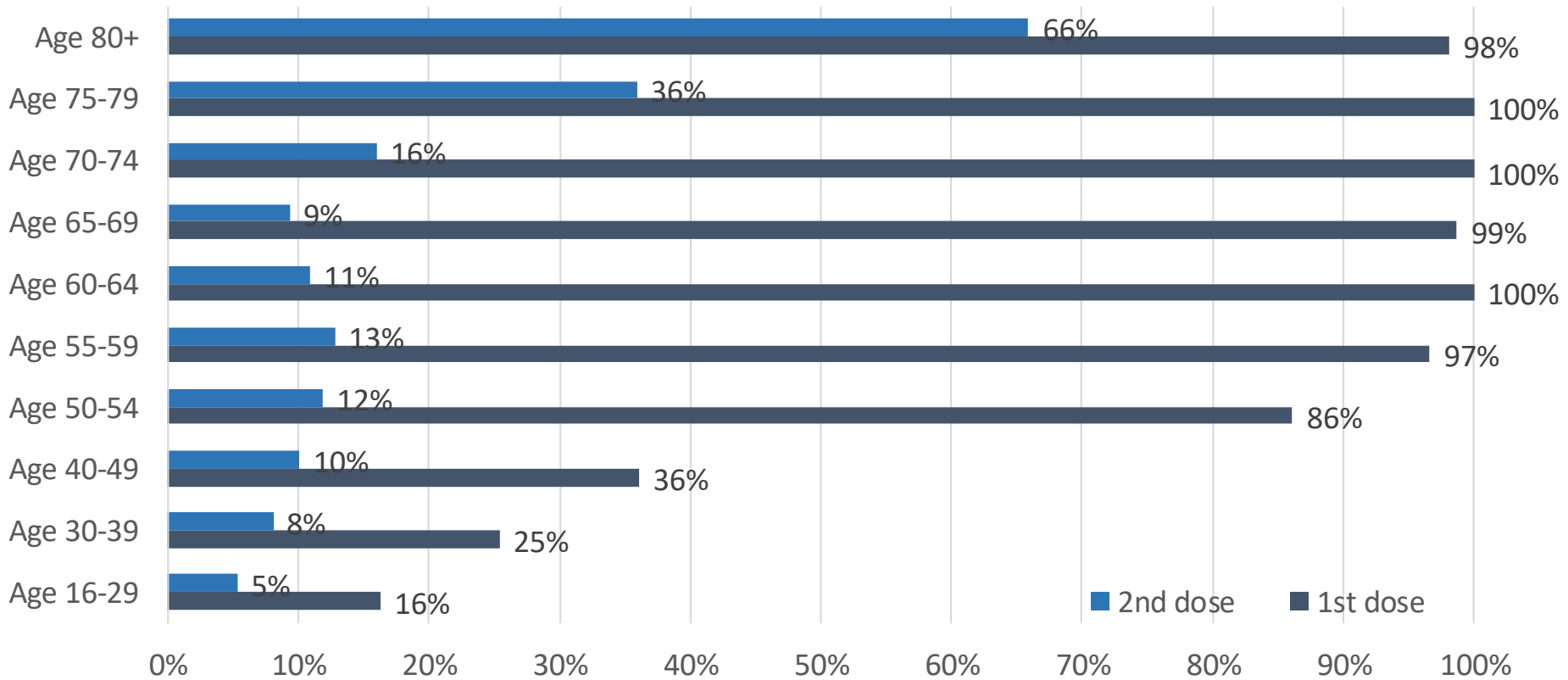
# Medium term projections of modelled ICU bed use for Covid patients



# Mean Adult Contacts (truncated at 100) from SCS

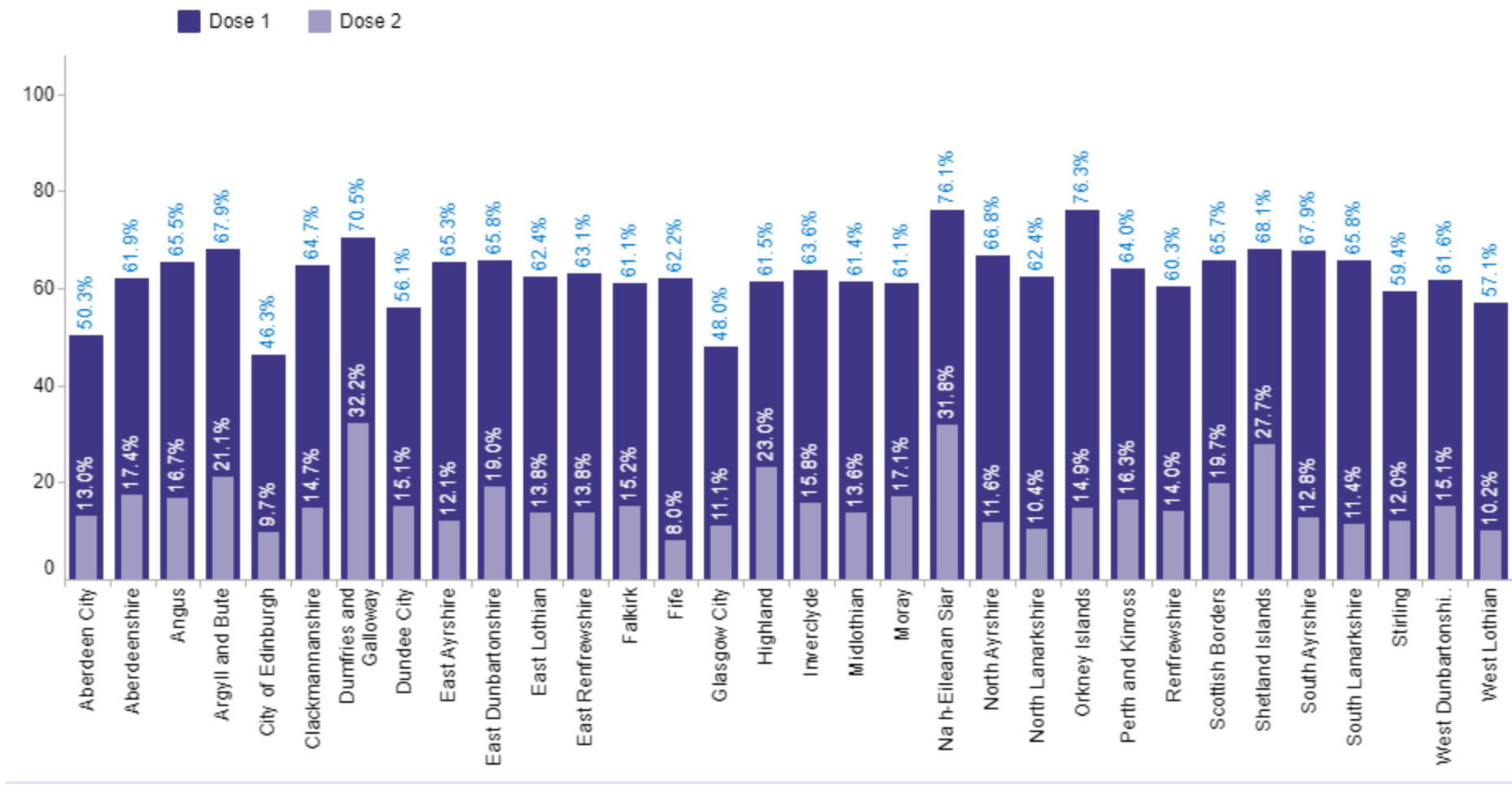


# Daily cumulative total % population who have received dose 1 and 2 by end of 13 April by age group in Scotland



# % Coverage by dose and by Local Authority

OFFICIAL SENSITIVE



# Conclusions

1

Case numbers, patients in hospital and admissions to hospital and ICU have declined over the last week.

2

The R value for Scotland on 14 April was between 0.8 and 1.0 with a growth rate between -4% and 0%.

3

Variant B.1.1.7 is now prevalent in Scotland. We are monitoring other variants of concern.

4

Almost 2.7 million people have now been vaccinated (1<sup>st</sup> dose), which is 59.3% of Scotland's adult population. Over 634,000 people have received their second dose which is 14.0% of those 16+.